

# Каталог запасных частей КПП ZF S5-42 КАМАЗ 1307 050 366 (S542, 5S-42, 5S42)



## Spare Parts Catalog

S 5-42

KAMAZ PUBLIC JOINT STOCK COMPANY

Material number: 1307.050.366

ZF Friedrichshafen AG

Hauptverwaltung

80038 Friedrichshafen

Deutschland

Telefon: +49 7541 77-0

Telefax: +49 7541 77-908000

[www.zf.com](http://www.zf.com)

zuständiges Werk:

Friedrichshafen

# Notes relating to the spare parts catalog

## Setup of the spare parts catalog

- Cover sheet
- Technical Cover (only in SDM print)
- Overview of figures
- Figure
- Associated parts list
- Next figure
- Associated parts list
- ...

## Figure and parts list



## Overview of figures

Bildtafel Figure	Sachnummer Product number	Benennung (Description)	Technische Info Technical info	Description (Benennung)	Menge Quantity	Einheit Unit
068.08.17	1316.170.001	AUSLEGER	WL	SHIFT TURRET	1	Stk
068.08.06	1316.170.031	DECKEL	WL*H-H *VM	COVER	1	Stk
068.08.14	1316.170.808	DECKEL	WL*AUSL+GEH*H-H*HF160N	COVER	1	Stk
08	1316.170.441	ANSCHLUSSTEILE	WL*NG-VORB*RG-SCHL*168N *BAJONETT	CONNECTING PARTS	1	Stk

The "gap" indicates that there is no separate graphics panel (poster) for this assembly  
The parts of this assembly are shown with the same mid-section number on the figure

### 1 Positions and subpositions

Pos.	Sachnummer Product number	Benennung (Description)	Technische Info Technical info	Description (Benennung)	Menge Quantity	Einheit Unit
0370	1315.201.054	RUECKLAUFBOLZEN	KPL.16S151*SG*L= 79	REV.IDLER SHAFT	1	Stk
/0120	0631.329.293	SPANNSTIFT		SLOT. PIN	1	Stk

Positions marked with "/" are the individual items of a completion  
For example: Position 0370 contains a centering pin with the position /0120

### 2 Combinations with standardized parts

Pos.	Sachnummer Product number	Benennung (Description)	Technische Info Technical info	Description (Benennung)	Menge Quantity	Einheit Unit
0630		VERSCHL.SCHR.		SCREW PLUG	1	Stk
	0636.302.067	VERSCHL.SCHR.		SCREW PLUG	1	Stk
	0634.801.249	DICHTRING	A 26 X 31	SEALING RING	1	Stk

The parts list shows the components included in the combination of standardized parts

### 3 Depiction of position/item number on the figure and in the parts list

01.620 - on the figure      01 relates to the assembly in which the position is included. Due to program-related reasons, it is shown on the figure.

0620 - in the parts list

Pos.	Sachnummer Product number	Benennung (Description)	Technische Info Technical info	Description (Benennung)	Menge Quantity	Einheit Unit
0620	0732.040.736	DRUCKFEDER		COMPRESSION SPRING	1	Stk

### 4 \*-Positions

Positions marked with an \* are optional i.e. inclusion in the parts list is not mandatory.  
The following note is shown on the figure

je nach Stücklistenausführung  
depending on spec. number  
\*  
suivant la nomenclature  
secondo la distinta base

### 5 Parts, dotted display

Parts with dotted display on the figure are only used for orientation of other parts



Pos.	Information	Amendment number
001	Use case -----	
002	Customer KAMAZ PUBLIC JOINT STOCK COMPANY	
003	City Naberezhnye Chelny	
004	DUNS 64-493-2113	
005	Vehicle / Apparatus -----	
006	Sales Name	
007	Manufacturer KAMAZ PUBLIC JOINT STOCK COMPANY	
008	Engineering Name	
009	Product Use TRUCK	
010	Vehicle/Hardware Type ROAD TRACTOR	
011	SOP	
012	Engine	
013	Sales Designation	
014	Manufacturer Cummins Engine Co.	
015	Eng.Displ.	
016	Cylinder	
017	Nom. power 117 kW	
018	RPM at nom. power 2500 1/min	
019	Nom. torque 569 Nm	
020	RPM at nom. torque 1400 1/min	
021	Classification use case -----	
022	APPROVAL NOTE 1 ERSTEINBAU*UEBERPRUEFUNG ERFORDERLICH	
026	DESIGNATION, CLUTCH MF362	
027	MANUFACTURER, CLUTCH ZF-SACHS	
030	TOTAL NUMBER OF WHEELS 4	
031	NUMBER OF DRIVING WHEELS 2	
032	DYNAMIC TYRE RADIUS 391 mm	
033	REAR AXLE RATIO 4.01	
037	PERMISS.GROSS VEHICLE WEIGHT 10 t	
039	Product description -----	
040	INSTALLATION POS TRANSMISSION VERTICAL	
041	TRANSMISSION ATTACHMENT FLANGE-MOUNTED	



Pos.	Information	Amendment number
042	RATIO, BOTTOM GEAR 5.72	
043	RATIO, TOP GEAR .76	
044	SET OF RATIOS SG	
045	RATIO, 1ST GEAR 5.72	
046	RATIO, 2ND GEAR 2.94	
047	RATIO, 3RD GEAR 1.61	
048	RATIO, 4TH GEAR 1	
049	RATIO, 5TH GEAR .76	
050	RATIO, 1ST GEAR REVERSE 5.24	
051	DESIGN, SHIFT SYSTEM TURNING SHAFT	
052	POSITION, GEAR SHIFT SYSTEM HORIZONTAL LEFT	
054	DESIGN, SEPARATING CLUTCH FULL-SYNCHRONIZED	
055	REFERENCE LENGTH INPUT SHAFT -104 mm	
056	STANDARD TYPE INPUT SHAFT SAE	
058	NORMEN IDENTNUMMER ANTR.WELLE 10C	
059	NOMINAL DIAMETER INPUT SHAFT 1,500	
071	DESIGN,CONN., CLUTCH HOUSING SAE 3	
076	DIAMETER, RELEASE FLANGE 57 mm	
077	TYPE FIT RELEASE BEARING FLA. E8	
078	DESIGN BEARING OUTPUT STANDARD SUSPENSION	
079	OUTER DIA. OUTPUT FLANGE RA 155 mm	
081	NO.OF BORES OUTPUT FLANGE HA1 4	
082	BORE DIA. OUTPUT FLANGE RA 13 mm	
085	REF. LENGTH OUTPUT FLANGE RA 619 mm	
089	DIMENSION SHIFT TURRET DIST. 241 mm	
090	MEAS. LOC. SHIFT TURRET DIST. SHIFT LEVER OUTSIDE EDGE	
093	RADIUS 1 SHIFT LEVER 65 mm	
094	DESIGN, OFFSET, SHIFT LEVER OUTSIDE	
097	LOCATION GEAR SHIFT LEVER TAPER OUTSIDE	
101	LEVER POSITION SHIFTING OUTPUT C	
112	SELECTION PATTERN VARIANT INSTALLATION DRAWING	
115	SWITCH, REVERSE GEAR y	



Pos.	Information	Amendment number
116	DESIGN, RG (REV.GEAR) SWITCH CLOSING	
117	NOTE ON SWITCH, REVERSE GEAR GEAR SHIFT RAIL	
118	PROT. CAP SWITCH, REVERSE GEAR y	
119	DESIGN, CONNECTION, RG SWITCH DIN BAYONET	
121	SWITCH, NEUTRAL GEAR y	
122	DESIGN,NG(NEUTRAL GEAR)SWITCH OPENING SWITCH	
123	PROT.CAP SWITCH, NEUTRAL GEAR y	
124	DESIGN, CONNECTION, NG SWITCH DIN BAYONET	
128	REF.LENGTH,RELEASE BEAR.FLAN -12 mm	
130	TYPE OF RELEASE MECHANISM WITH	
133	VERSION OF CLUTCH HOUSING INTEGRATED	
134	ASSEMBLY POS. CLUTCH CYLINDER 9	
135	VERSION OF CLUTCH CYLINDER SERVO	
136	AUSF BETAETIGUNG KUPPLUNG D=75.0	
137	EINBAUMASS KUPPLUNGSGEHAEUSE 145 mm	
143	DESIGN RELEASE BEARING WITHOUT GROOVE	
144	WRENCH SIZE, RELEASE FORK 75 mm	
150	NO.OF PULSES PULSE SENSOR SFI H68 6 IMP/U	
152	DESIGN PULSE SENSOR SFI H68 WITH	
154	PROT.CAP PULSE SENSOR SFI H68 y	
155	DESIG,CONN,PULSE SENS. SFI H68 DIN BAYONET	
194	OIL CAPACITY, GEARBOX 3.2 dm3	
197	OIL GRADE PERMISSIBLE ACC. TO TE-ML02	
199	COLOR NOT	
203	CODING OUTER CONSERVATION KA1	
204	CODING INNER CONSERVATION KI1	
205	SCOPE OUTER CONSERVATION T	
206	CONSERVATION SPECIFICATION ZFN 916	
207	Documents -----	
208	SCHALTGETRIEBE Drawing 1307.050.701	
209	5-GANG-GETRIEBE Drawing 1307.650.009	
210	5-GANG-GETRIEBE Assembly 1307.650.009	

# Assembly group overview

Material number: 1307.050.366

S 5-42 / KAMAZ PUBLIC JOINT STOCK COMPANY

Page 1 from 1



Graphics	Pos.	Material number	Name	Quantity	Amend. no.	Techn. Info.
067.01.12-1	110	1307.101.138	GEARBOX HOUSING	1		
067.02.04-1	130	1307.102.097	INPUT SHAFT	1		
067.03.01-1	160	1307.103.021	LAYSHAFT	1		
067.04.04-1	200	1307.104.201	MAIN SHAFT	1		
067.04.82-1	210	1307.104.813	MAIN SHAFT	1		
067.05.01-1	220	1307.105.002	RETURN	1		
067.06.05-1	230	1307.106.049	GEAR SHIFT SYSTEM	1		
067.06.40-1	238	1307.106.433	CONNECTING PARTS	1		
067.06.05-1	950	1307.106.442	CONNECTING PARTS	1		
067.06.05-1	960	1307.106.443	CONNECTING PARTS	1		
067.07.01-1	280	1307.107.800	GEAR SHIFT HOUSING	1		
067.07.01-1	900	1307.107.008	GEAR SHIFT HOUSING	1		
067.07.01-1	910	1307.107.010	GEAR SHIFT SHAFT	1		
067.93.31-1	140	1307.168.012	CLUTCH RELEASE DEVICE	1		
067.93.69-1	142	1307.168.405	CLUTCH RELEASE DEVICE	1		

# Plant

Page 1 from 1

Material number: 1307.050.366

Plant: 067.01.12-1

Material-assembly-group-no: 1307.101.138

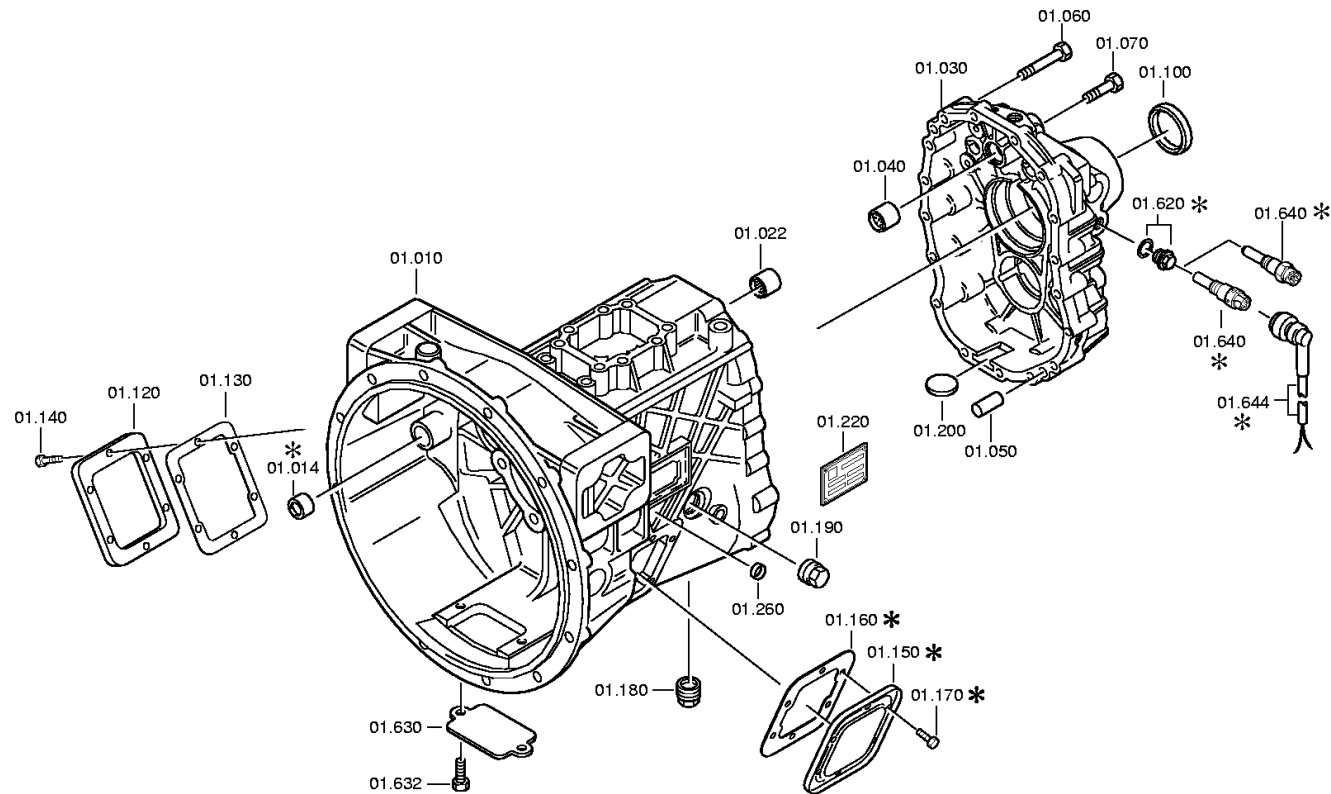
S 5-42 / KAMAZ PUBLIC JOINT STOCK COMPANY

GEARBOX HOUSING



Bildtafel:  
Figure: 067.01.12  
Figure:  
Figura:

je nach Stücklistenausführung  
depending on spec. number  
\* suivant la nomenclature  
secondo la distinta base



# Plant

Page 1 from 1

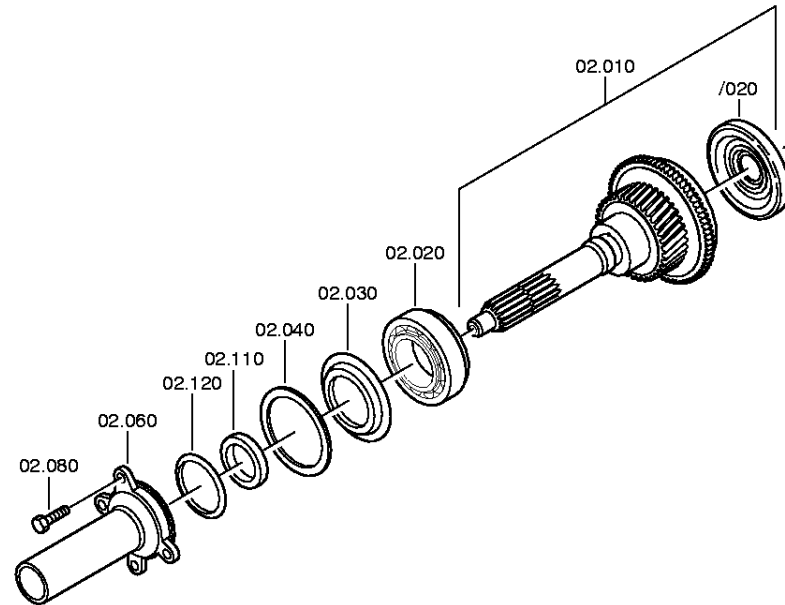
Material number: 1307.050.366

Plant: 067.02.04-1

Material-assembly-group-no: 1307.102.097

S 5-42 / KAMAZ PUBLIC JOINT STOCK COMPANY

INPUT SHAFT





# Plant

Page 1 from 1

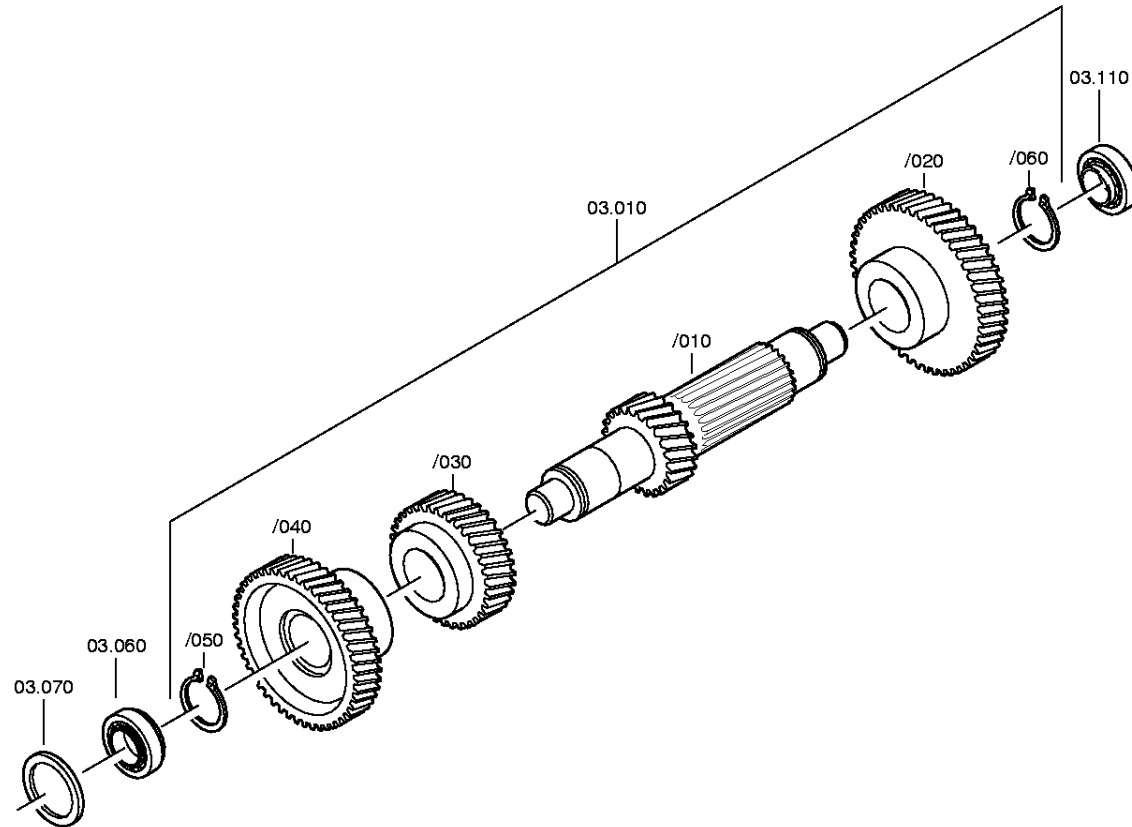
Material number: 1307.050.366

Plant: 067.03.01-1

Material-assembly-group-no: 1307.103.021

S 5-42 / KAMAZ PUBLIC JOINT STOCK COMPANY

LAYSHAFT

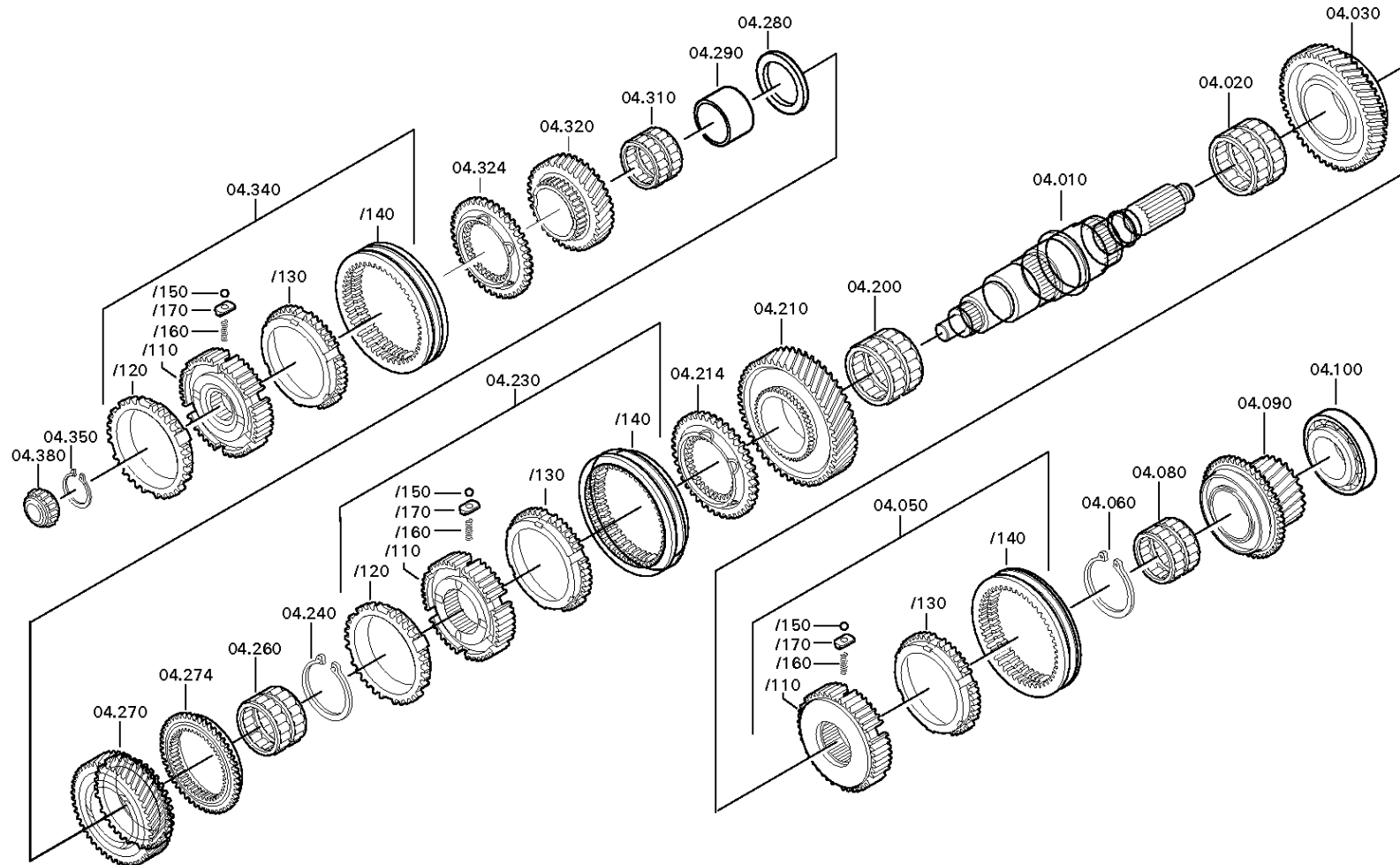


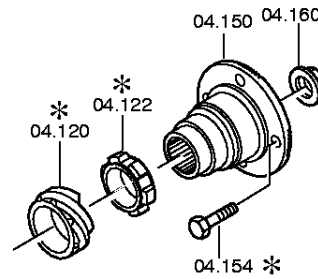
# Plant

Page 1 from 2

Material number: 1307.050.366  
Plant: 067.04.04-1  
MAIN SHAFT

S 5-42 / KAMAZ PUBLIC JOINT STOCK COMPANY  
MAIN SHAFT





# Plant

Page 1 from 1

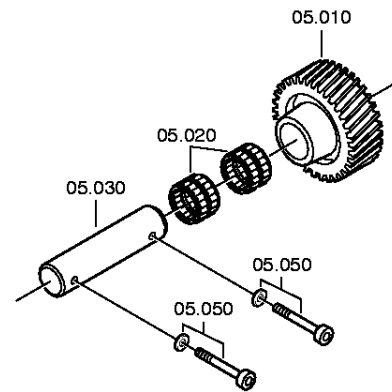
Material number: 1307.050.366

Plant: 067.05.01-1

Material-assembly-group-no: 1307.105.002

S 5-42 / KAMAZ PUBLIC JOINT STOCK COMPANY

RETURN



# Plant

Page 1 from 2

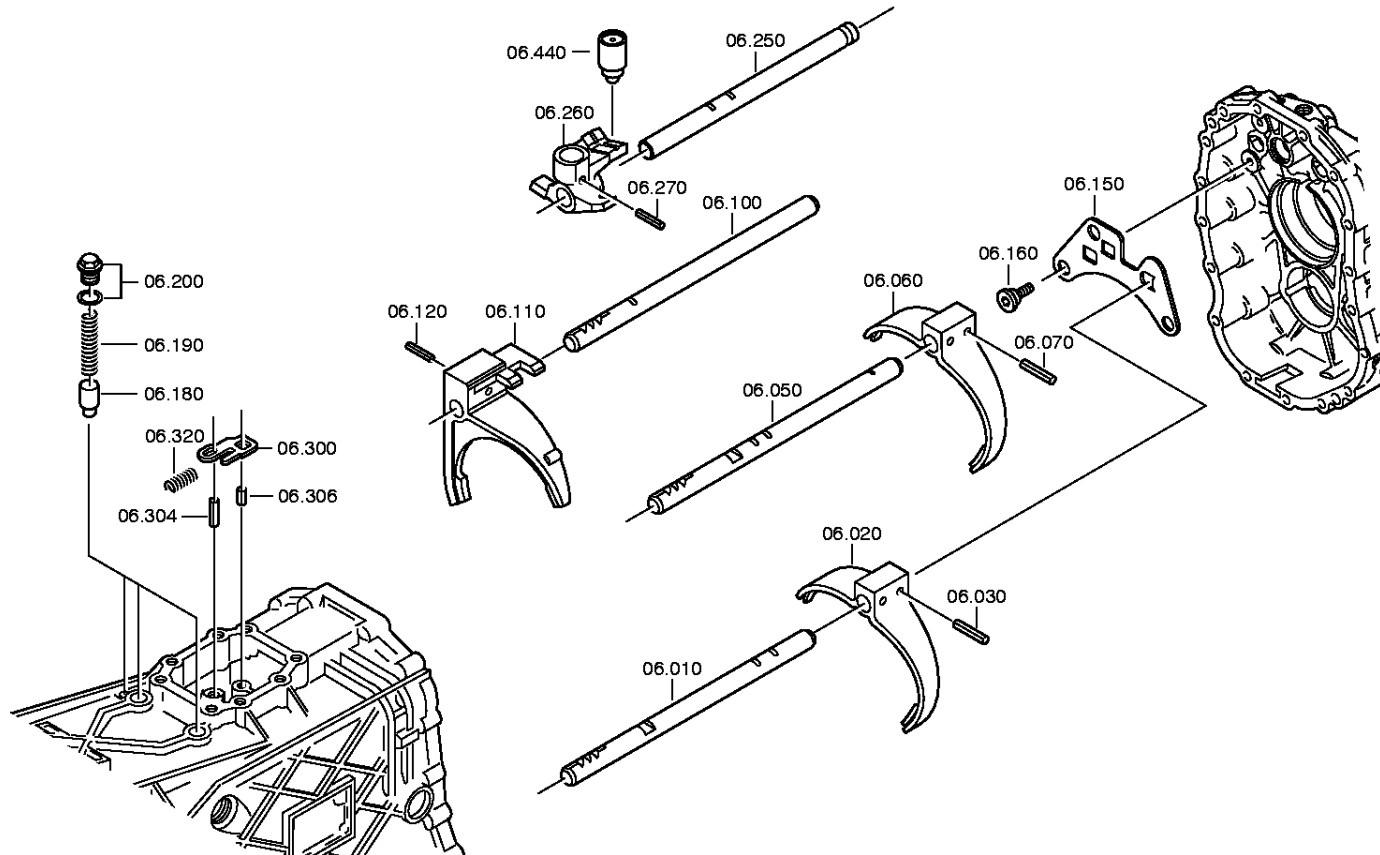
Material number: 1307.050.366

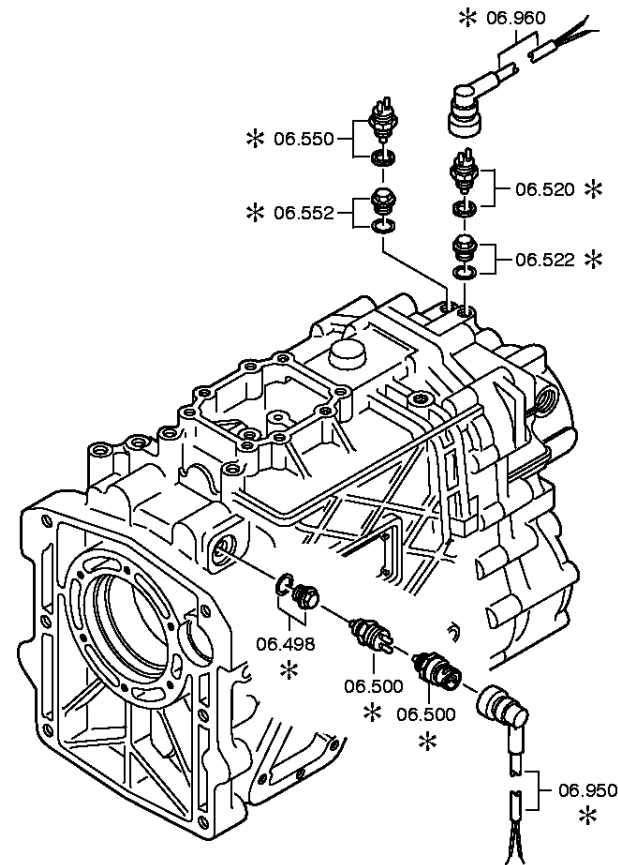
Plant: 067.06.05-1

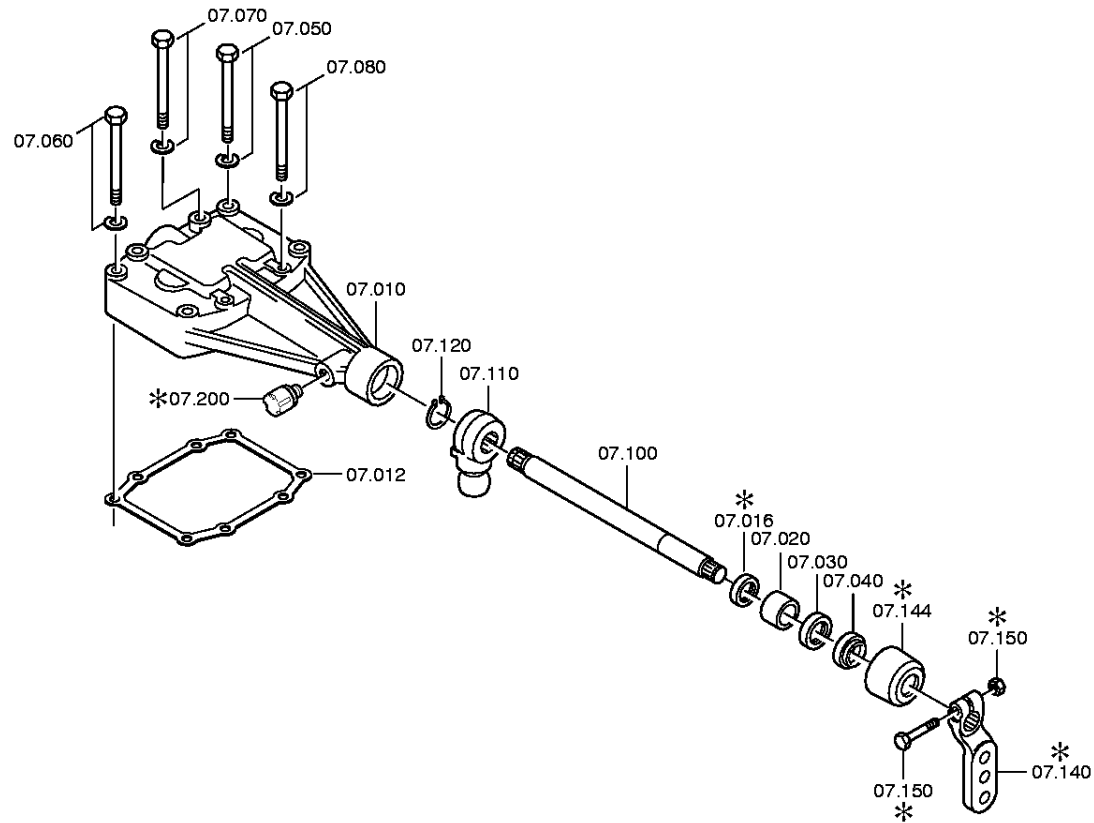
GEAR SHIFT SYSTEM

S 5-42 / KAMAZ PUBLIC JOINT STOCK COMPANY

GEAR SHIFT SYSTEM





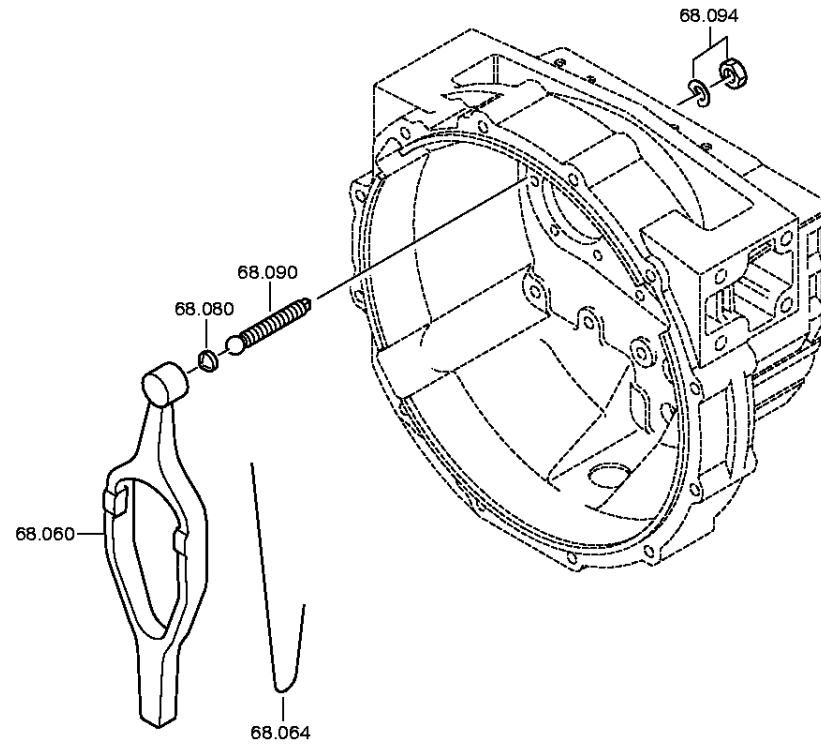


# Plant

Page 1 from 2

Material number: 1307.050.366  
Plant: 067.93.31-1  
CLUTCH RELEASE DEVICE

S 5-42 / KAMAZ PUBLIC JOINT STOCK COMPANY  
CLUTCH RELEASE DEVICE





# Plant

Page 2 from 2

Material number: 1307.050.366  
Plant: 067.93.69-1  
**CLUTCH RELEASE DEVICE**

S 5-42 / KAMAZ PUBLIC JOINT STOCK COMPANY  
**CLUTCH RELEASE DEVICE**

