



CATALOGO PARTI DI RICAMBIO

CD-ROM 'ELCAT' 1/2004 10.10.2010

S 6-85

no. distinta base ZF: 1310 050 308

cliente: NEFAZ

Z F F R I E D R I C H S H A F E N A G

ZF-ELCAT scheda d'informazione tecnica

CD 1/2004 10.10.2010
foglio 2

distinta base: 1310 050 308 S 6-85 / SG*LR*ANGEFL*DW-SE *HECK / NEFAZ

| art. | testo | n° modif. |
|------|---|-----------|
| A10 | CLIENTE:NEFAZ *STATO:RUS | |
| A14 | NUMERO DELL ORDINE:NON C E | |
| A90 | OMOLOGAZIONE:CONTR.INSTALLAZ.ORIG.NECESSARIO | |
| F06 | POS.MONTAGGIO: ORIZZ.DESTRO *FLANGIATO *POST. | |
| F10 | RAPPORTO: 6,75- 0,83 *SG C 6,75* 3,87* 2,36* 1,47* 1,00* 0,83*R 6,21 | |
| F34 | COMANDO:ALBERO ROTANTE *VERTICALE * | |
| F38 | ACCOPPIAMENTO INGRA:TOTALMENTE SINCRONIZZATO | |
| F40 | ALBERO ENTRATA: L=320,0*SAE 10C 1 3/4POLL PERNO :D= *GAMBO :D= *BUSSOLA: | |
| F46 | SUPPORTO PER REGGISPINTA:L= 205,0*D= 57,000 E8 | |
| F50 | USCITA :SUPPORTO NORMALE | |
| F52 | FLANGIA USCITA TP:DE=175 *NF= 8 *D= 9,7 L= 88,0 | |
| F64 | INNESTO CON ALBERO ROTANTE: | |
| F66 | DISTANZA DEL BRACCIO:A=184,0* | |
| F68 | PUNTO MISURA:IMPIANTO LEVA COM *CAVO | |
| F86 | PUNTO D ARRESTO:K | |
| F96 | PACCO DI MOLLE:DISPOS.Q2 * | |
| F98 | ARRESTO BLOCC: REAZIONE ELASTICA RM=240N | |
| G16 | DISPOS.DELLE MARCE:WII | |
| G26 | TACHIMETRO:I= 1,545 | |
| G28 | USCITA DEL TACHIMETRO: 5* *DIS.INS | |
| G30 | INTERRUTTORE:RG*APERTURA *ASTA COMANDO CAPPUCC.PROTEZ:SENZA* | |
| G32 | INTERRUTTORE:NG*APERTURA * CAPPUCC.PROTEZ:SENZA* | |
| G60 | GRUPPI APPLICATI/ACCESSORI | |
| G76 | SCATOLA FRIZIONE:SAE 2 *L=216,0 DISINNESTO: CON CIL: * POS MONTAGGIO: 6* | |
| G78 | CUSCINETTO DI DISINNESTO:D= 57,0*L= 56,0* DIAMETRO INTERNO FORCELLA: 75,0* | |
| M00 | DISEGNO: | |
| M02 | MONTAGGIO: 1310 600 202 | |

ZF-ELCAT scheda d'informazione tecnica

CD 1/2004 10.10.2010
foglio 3

distinta base: 1310 050 308 S 6-85 / SG*LR*ANGEFL*DW-SE *HECK / NEFAZ

| art. | testo | n° modif. |
|------|--|-----------|
| M10 | MONTAGGIO: 1311 607 001 | |
| M14 | SEZIONE: 1310 050 022(0) | |
| M18 | SEZIONE: 1311 107 016 | |
| M20 | SEZIONE: 1311 149 006 | |
| M22 | SEZIONE: 6060 700 189 | |
| M24 | SEZIONE: 6060 000 001 | |
| M90 | QUANTITA TOTALE OLIO: CA. 11,50L | |
| M92 | TIPO DI OLIO ZF: TE-ML02 | |
| M94 | PESO TOTALE: CA. 200,0 KG | |
| M96 | VERNICIARE:PROFONDO NERO *RAL9005 ZFN915W | |
| M98 | PROTEZIONE : KA1 T/KI2/ *ZFN 916 | |
| S02 | DATI DEL VEICOLO 1: | |
| S04 | MODELLO:BUS (URBANO) * 4X 2 | |
| S06 | PESO TOT.AMM:MOTR. 19T | |
| S08 | R DIN: 572* | |
| S10 | PONTE TP: I= 5,10 | |
| S14 | CATERPILL/3116ATAAC *KW164/2600*N.M 870/1500 | |
| S18 | FRIZIONE:LIPE-ROLLWAY*14-2 DLB | |
| | | |

ZF-ELCAT sommario delle figure

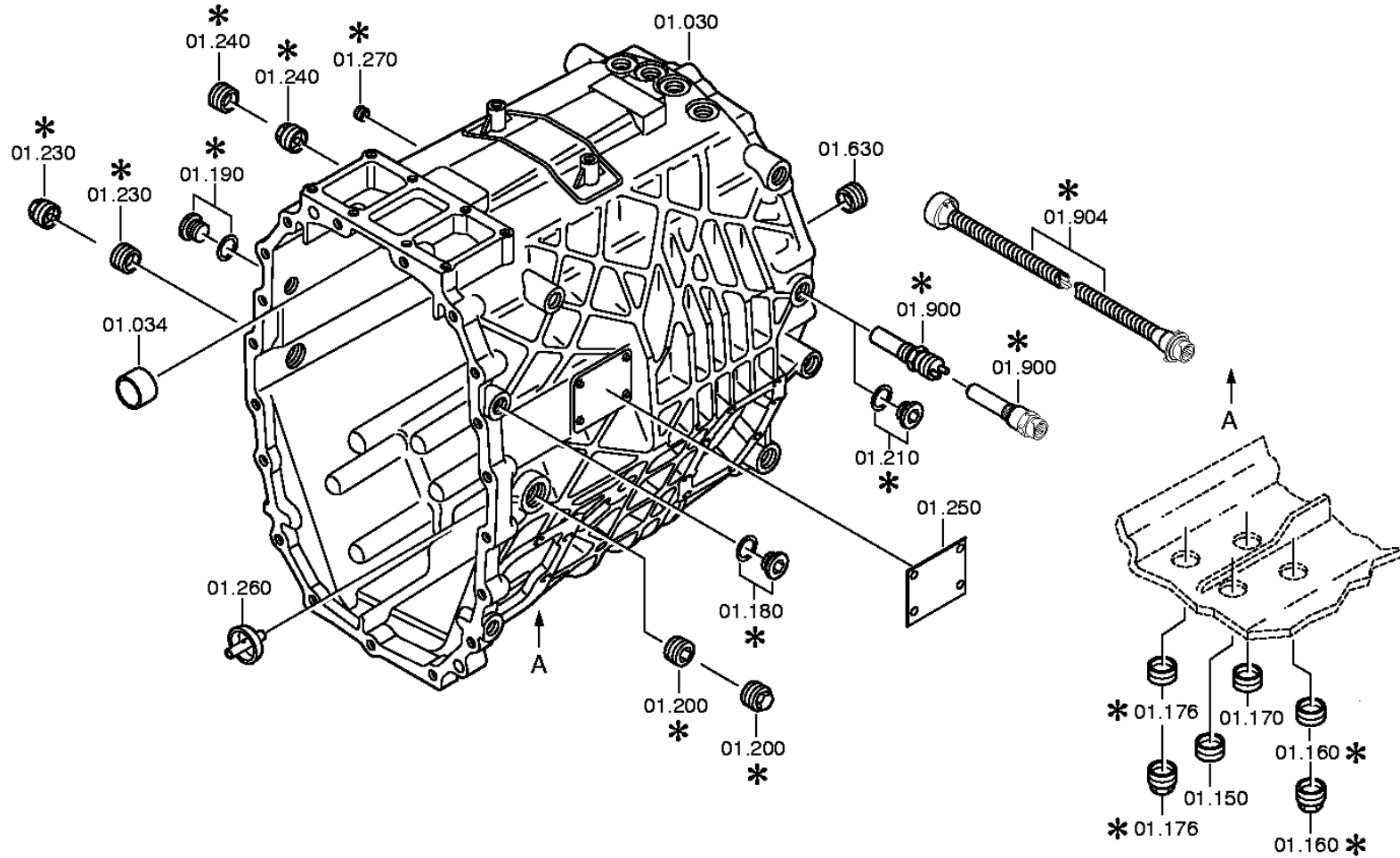
CD 1/2004 10.10.2010
foglio 4

distinta base: 1310 050 308 S 6-85 / SG*LR*ANGEFL*DW-SE *HECK / NEFAZ

| figura | n° categorico | denominazione | informazione tecnica | n° modif. |
|-----------|---------------|-----------------|---|-----------|
| 061.01.01 | 1310 101 047 | SCATOLA CAMBIO | SG*LR*GD | |
| 061.01.40 | 1310 101 406 | PARTI P. CHIUS. | NA*OELANSAUG.SEK-RET*LR/LL *S6-85 SOLO | |
| 061.01.80 | 1310 101 811 | SCATOLA CAMBIO | LR *GD | |
| 061.02.01 | 1310 102 059 | ALBERO ENTRATA | 6,75*L=320*SAE10C 1 3/4 *LAGER VERST*SONDER | |
| 061.02.40 | 1311 102 417 | PIASTRA RACCORD | L=205*D=57E8 | |
| 061.02.KB | 1311 102 802 | ALBERO ENTRATA | | |
| 061.03.02 | 1310 103 014 | ALBERO RINVIO | 6,75-0,83*BUS*O.N-TRIEB *SYN.D=150 | |
| 061.03.80 | 1310 103 801 | ALBERO RINVIO | | |
| 061.04.02 | 1310 104 022 | ALBERO PRIMARIO | 6,75-0,83 *ZAPF.LAG.VERST*RG-LAG.INNENRG | |
| 061.04.44 | 1311 104 450 | ALBERO PRIMARIO | AD=175*LZ= 8*D= 9,70*Z11 *ZENTRIER-D=132 | |
| 061.06.02 | 1310 106 026 | COMANDO | SG*WII | |
| 061.06.40 | 1311 106 400 | PARTIC.RACCORDO | WII*RG-OEFF*1+2G-OHNE *3+4G-OHNE*HG-OHNE | |
| 061.06.KB | 1311 106 407 | PARTIC.RACCORDO | KABELVERBIND*RG*M27 *1,00M | |
| 061.07.02 | 1310 107 024 | SCATOLA COMANDO | O.ENTLUEFTER*240N *KUGELRASTE*DW-O | |
| 061.07.KB | 1310 107 403 | ALBERO COMANDO | SCHUTZKAPPE | |
| 061.07.KB | 1311 107 806 | SCATOLA COMANDO | ABSTUETZPKT *SCHALTGEH.LI | |
| 061.07.KB | 1311 107 410 | ALBERO COMANDO | 184,0/192,5*O.HEBEL | |
| 061.08.02 | 1311 170 004 | BRACCIO COMANDO | 184,0/192,5*GD | |
| 061.08.KB | 1311 170 005 | COPERCHIO | | |
| 061.08.KB | 1311 170 801 | COPERCHIO | AUSLEGER KURZ | |
| 061.08.KB | 1311 170 014 | PARTIC.RACCORDO | NG-OEFF | |
| 061.08.KB | 1311 170 401 | PARTIC.RACCORDO | KABELVERBIND*NG*M27 *1,00M | |
| 061.12.03 | 1311 149 094 | GRUPPO MOLLE | Q2* *184,0/279,0/373,0 *GG-RASTE SCHWACH 127N | |
| 061.14.80 | 1311 122 807 | SUPPORTO | *BL*H/K | |
| 061.18.02 | 1311 108 007 | COPERCH.TACHIM. | | |
| 061.18.KB | 1311 108 801 | COPERCH.TACHIM. | TACHO MECH | |
| 061.92.00 | 6060 101 818 | FISSAGGIO | 10XM18X1,5X85 *AL-GEHAEUSE | |
| 061.92.24 | 6060 101 556 | SCATOLA FRIZ. | SAE 2*L=216,0*AUSRUECK. *KUPPL.VERST-6 | |
| 061.92.82 | 6060 101 407 | DISPOS.DISINNES | KZI-4,5*D=57,0*L= 56,0 | |
| 061.95.40 | 6007 101 449 | PARTIC.RACCORDO | GEBERZYL | |
| | | | | |

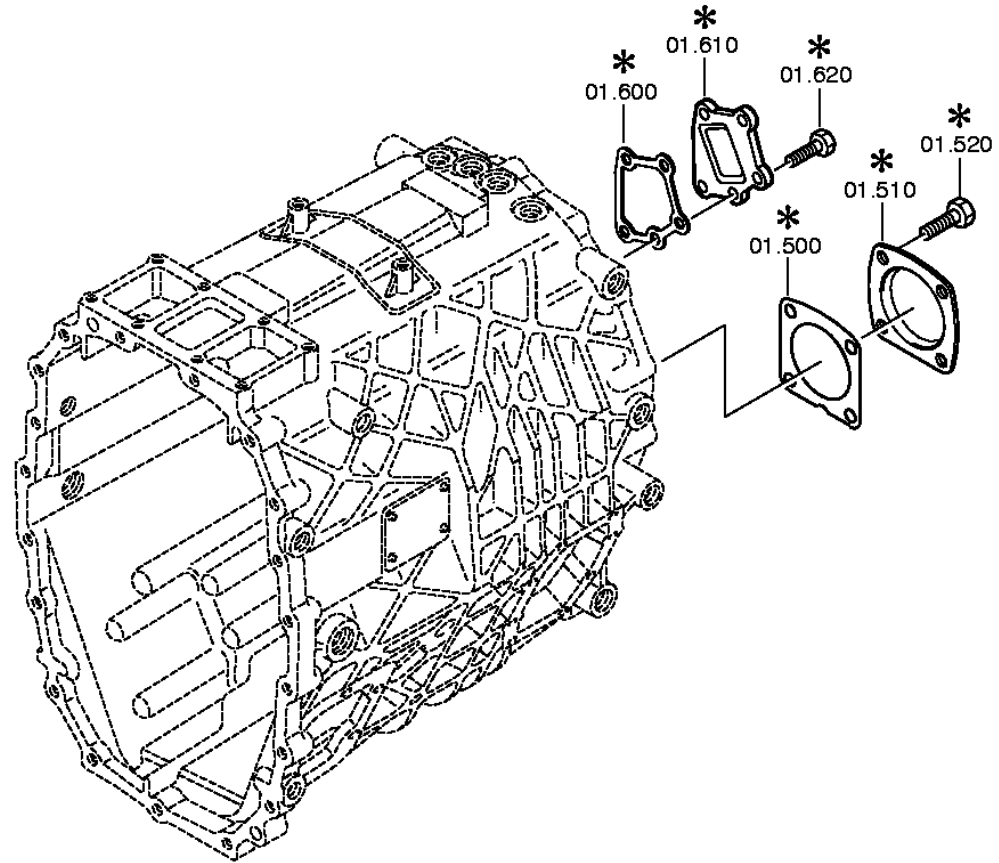
distinta base: 1310 050 308 S 6-85 / SG*LR*ANGEFL*DW-SE *HECK / NEFAZ
figura: 061.01.01 SCATOLA CAMBIO

* secondo la distinta base



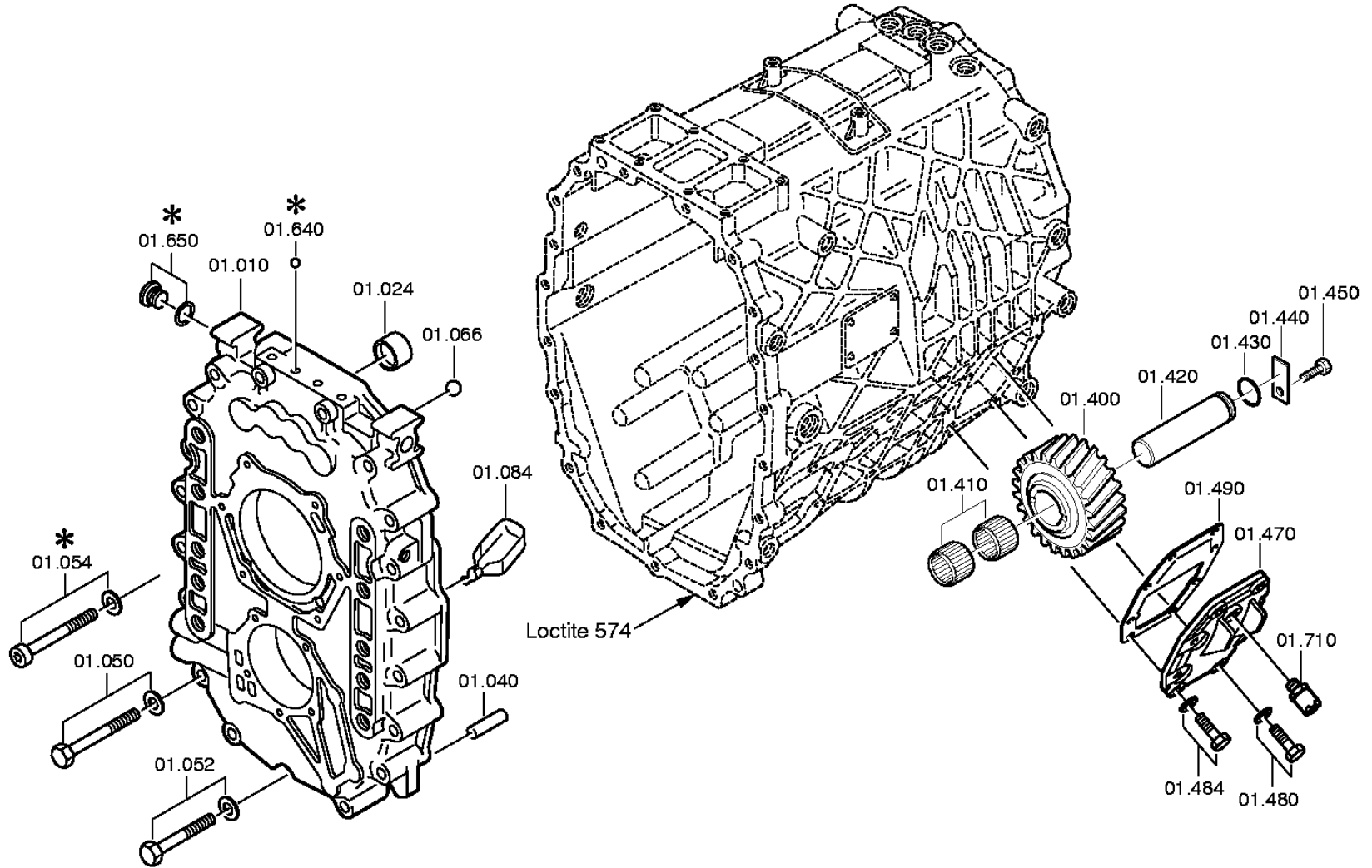
distinta base: 1310 050 308 S 6-85 / SG*LR*ANGEFL*DW-SE *HECK / NEFAZ
figura: 061.01.40 PARTI P. CHIUS.

* secondo la distinta base



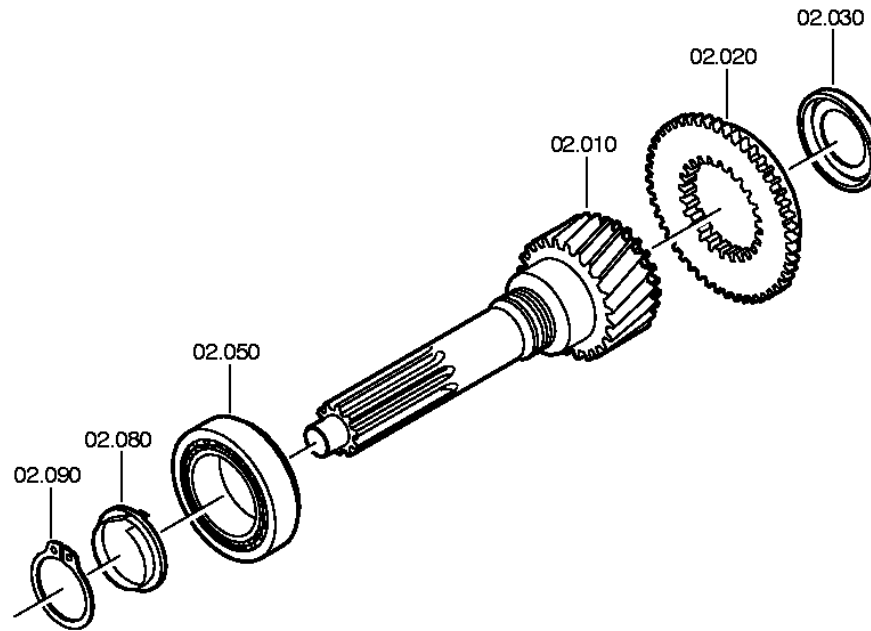
distinta base: 1310 050 308 S 6-85 / SG*LR*ANGEFL*DW-SE *HECK / NEFAZ
figura: 061.01.80 SCATOLA CAMBIO

* secondo la distinta base



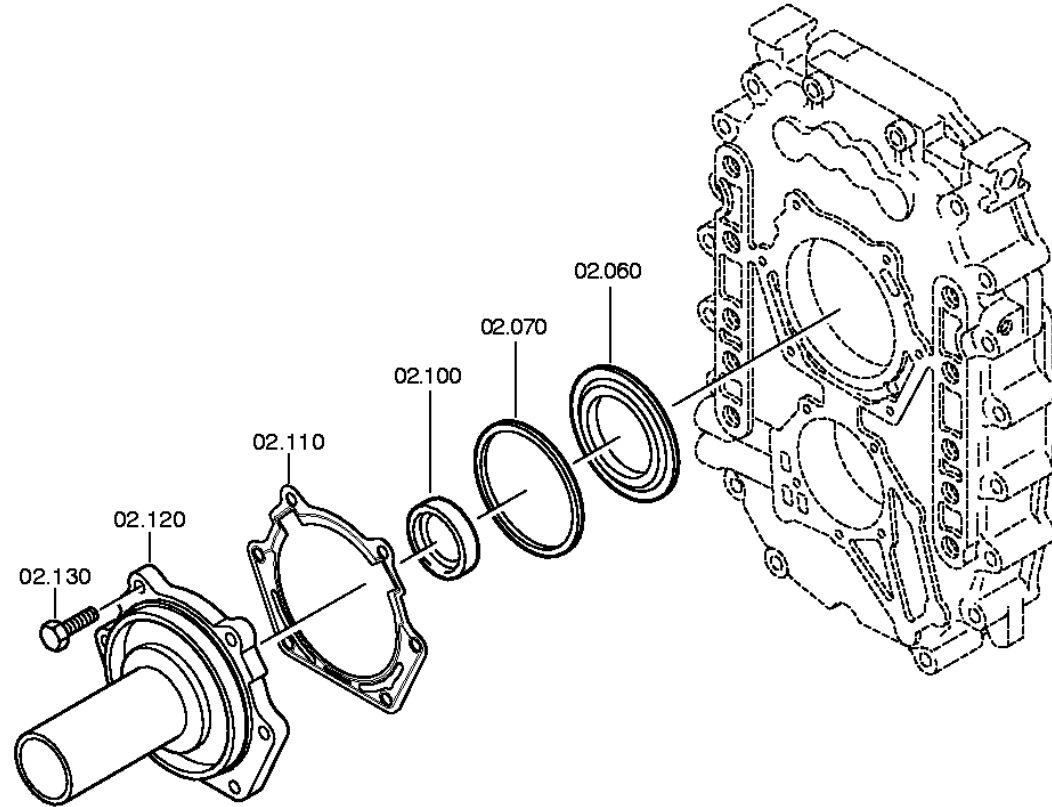
distinta base: 1310 050 308 S 6-85 / SG*LR*ANGEFL*DW-SE *HECK / NEFAZ
figura: 061.02.01 ALBERO ENTRATA

* secondo la distinta base



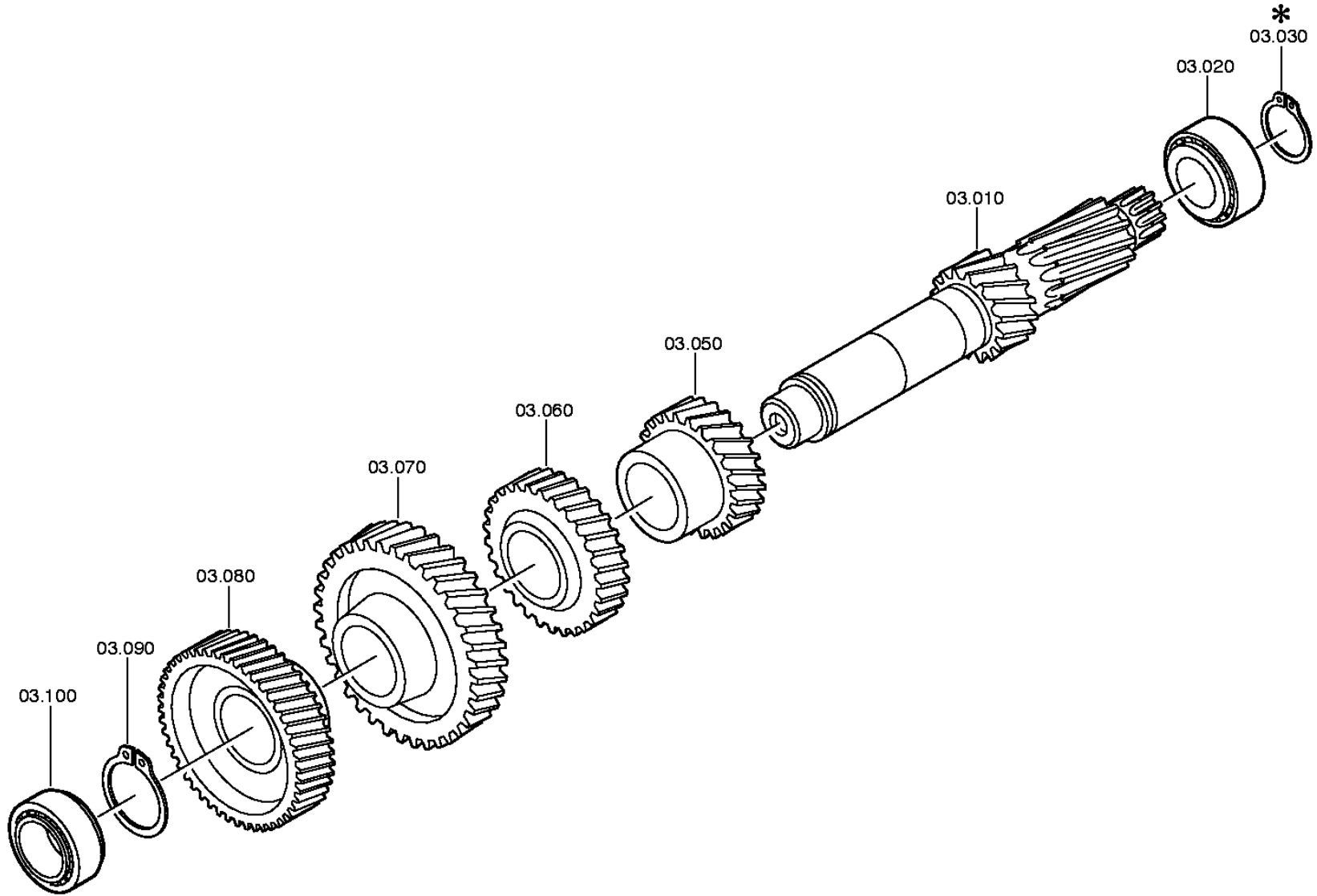
distinta base: 1310 050 308 S 6-85 / SG*LR*ANGEFL*DW-SE *HECK / NEFAZ
figura: 061.02.40 PIASTRA RACCORD

* secondo la distinta base



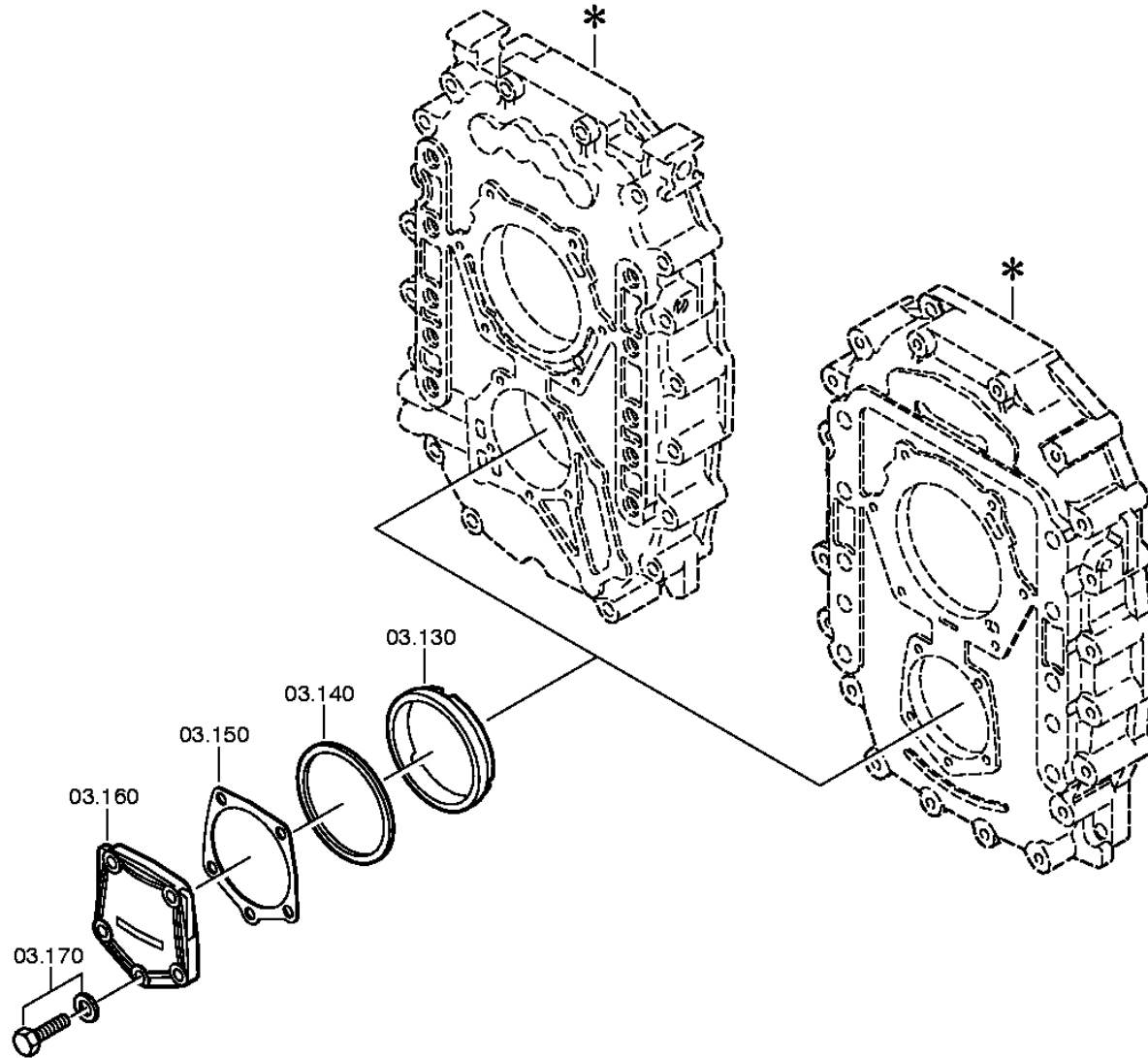
distinta base: 1310 050 308 S 6-85 / SG*LR*ANGEFL*DW-SE *HECK / NEFAZ
figura: 061.03.02 ALBERO RINVIO

* secondo la distinta base



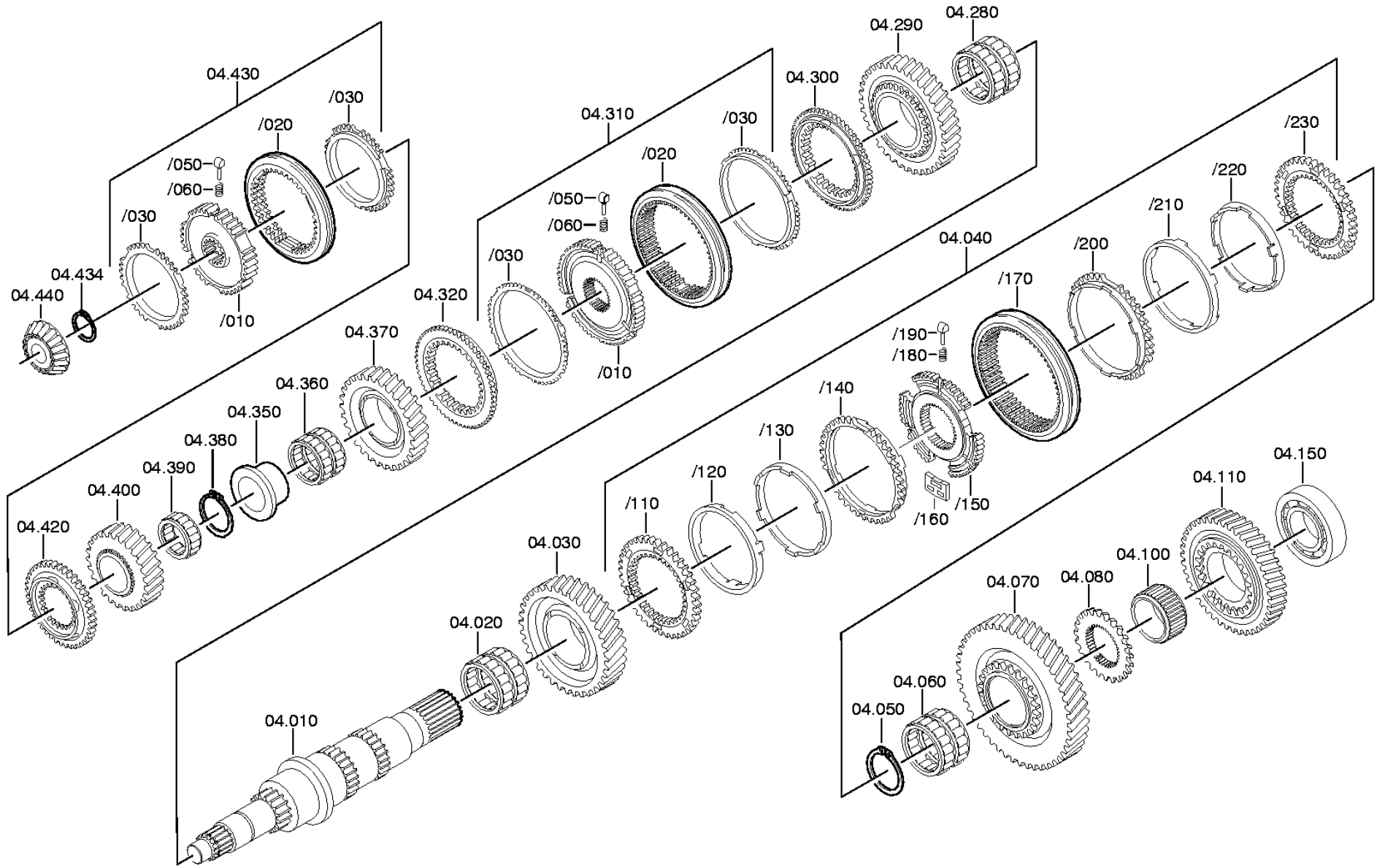
distinta base: 1310 050 308 S 6-85 / SG*LR*ANGEFL*DW-SE *HECK / NEFAZ
figura: 061.03.80 ALBERO RINVIO

* secondo la distinta base



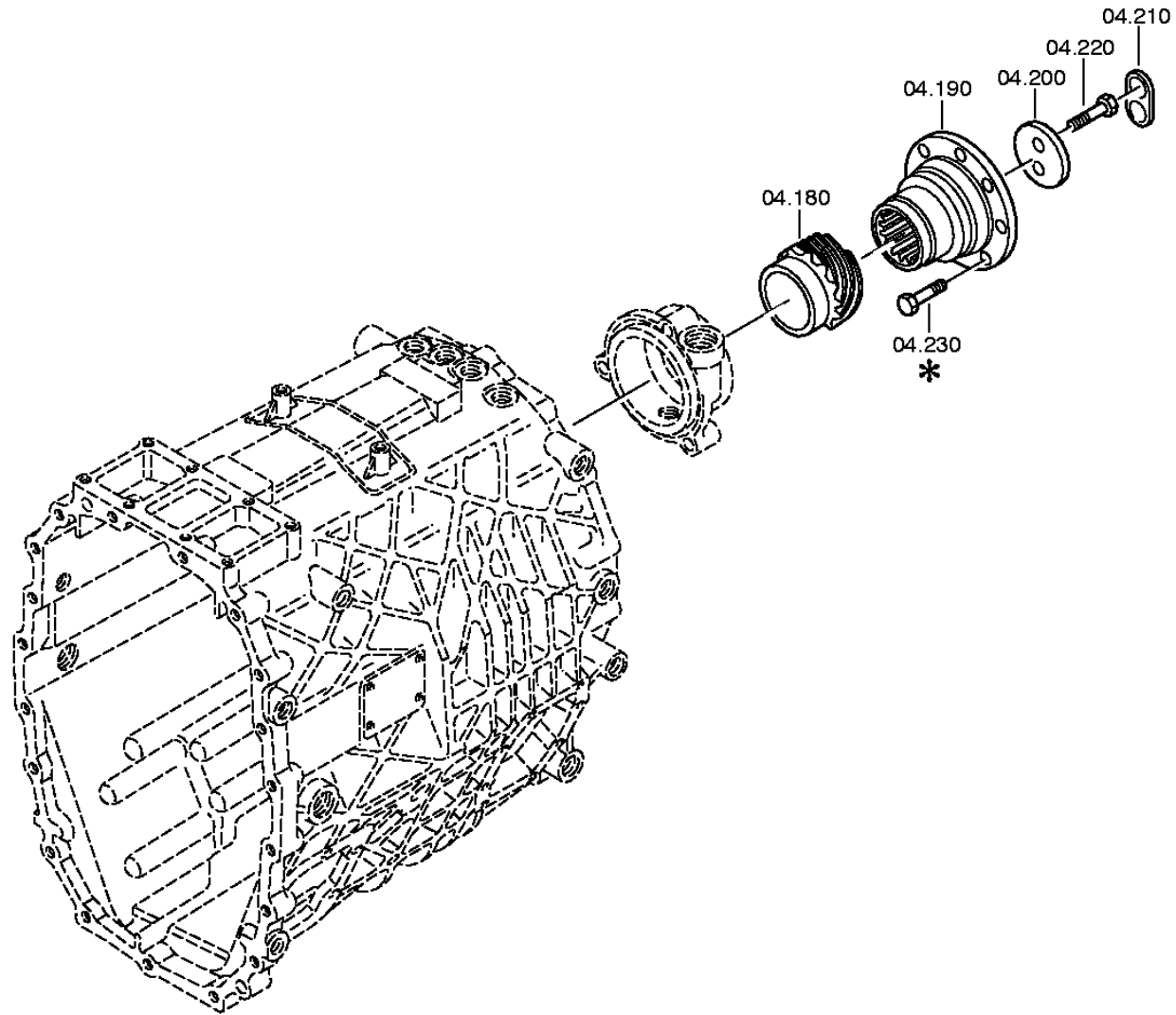
distinta base: 1310 050 308 S 6-85 / SG*LR*ANGEFL*DW-SE *HECK / NEFAZ
figura: 061.04.02 ALBERO PRIMARIO

* secondo la distinta base



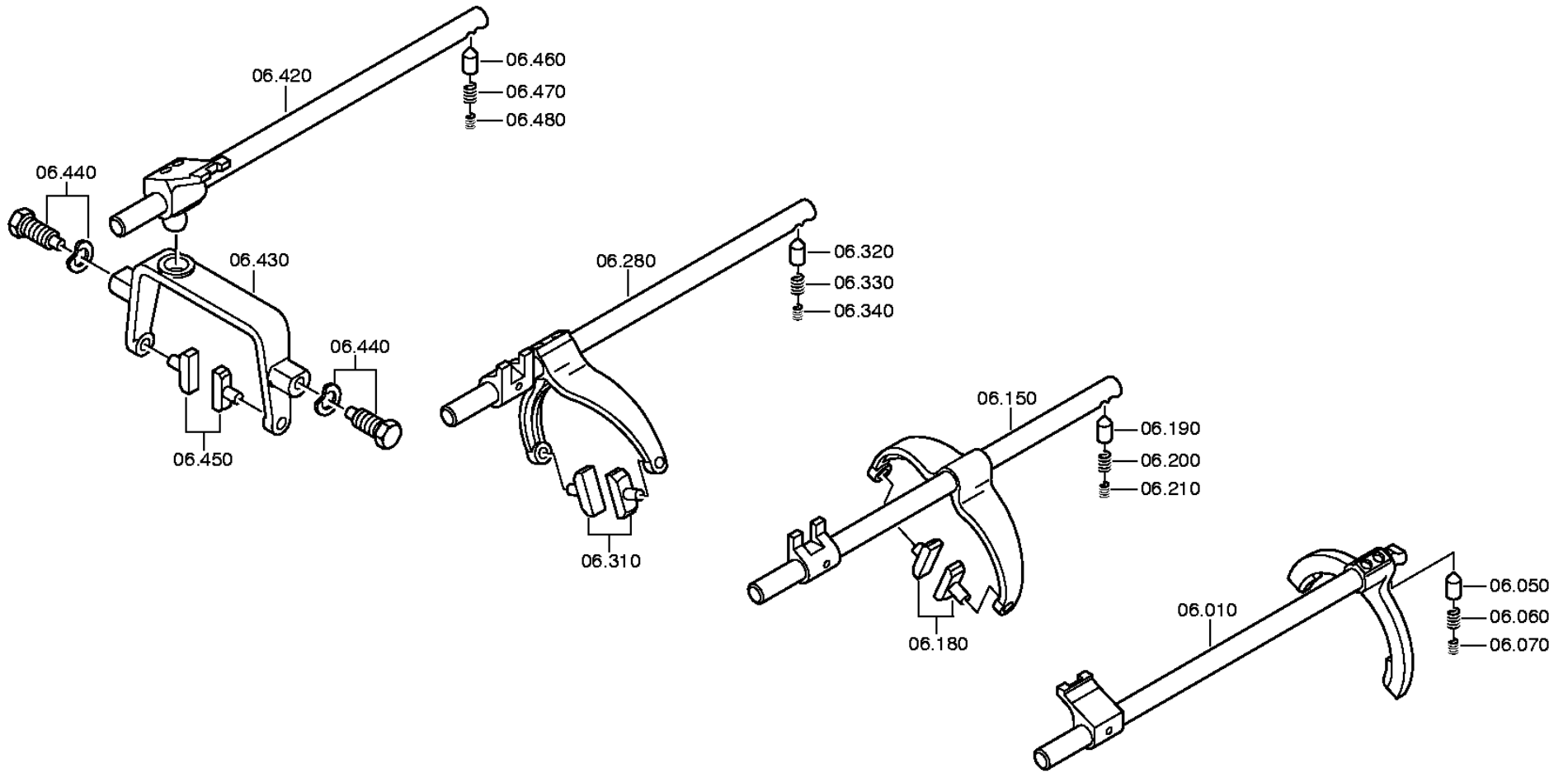
distinta base: 1310 050 308 S 6-85 / SG*LR*ANGEFL*DW-SE *HECK / NEFAZ
figura: 061.04.44 ALBERO PRIMARIO

* secondo la distinta base



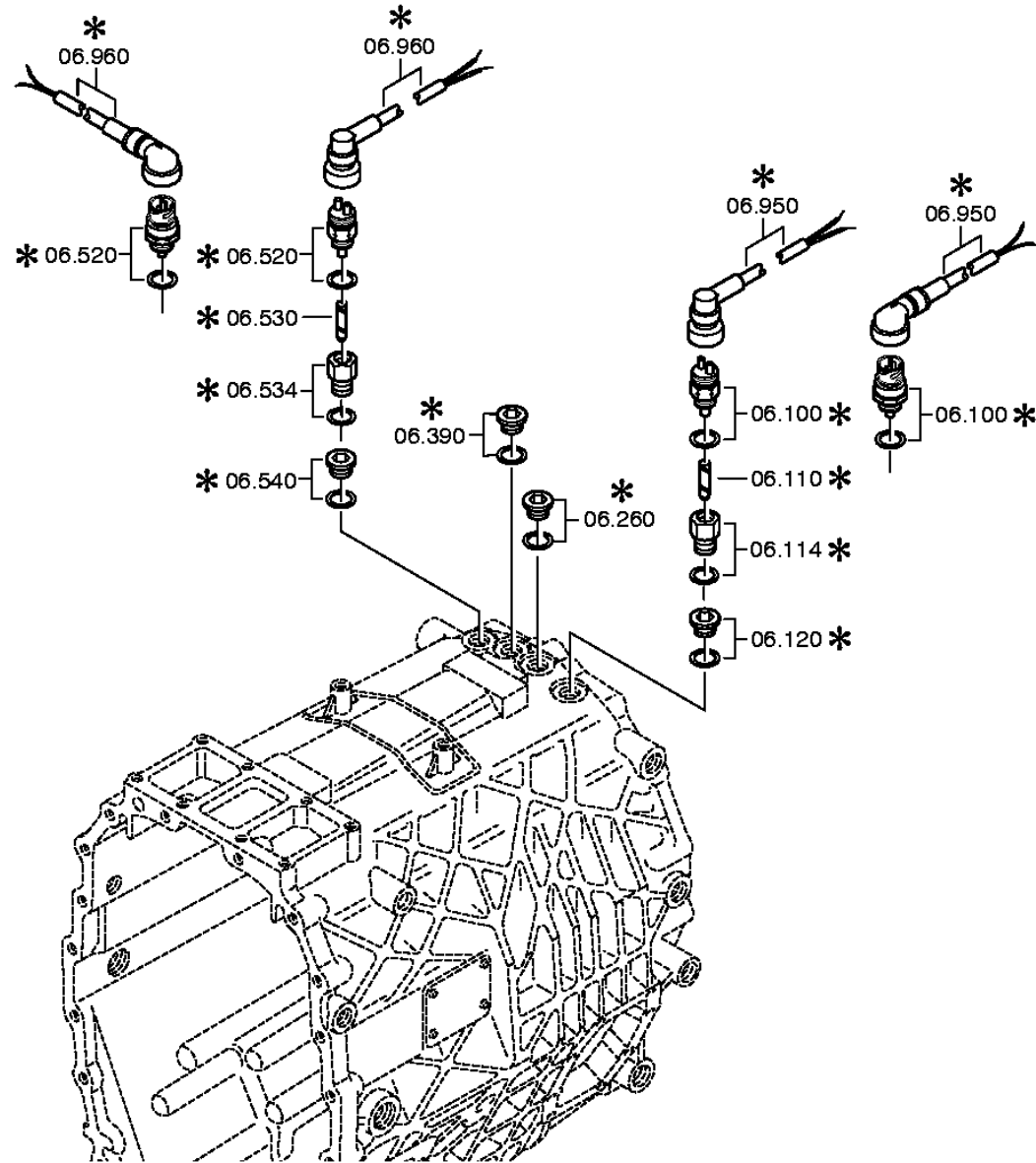
distinta base: 1310 050 308 S 6-85 / SG*LR*ANGEFL*DW-SE *HECK / NEFAZ
figura: 061.06.02 COMANDO

* secondo la distinta base



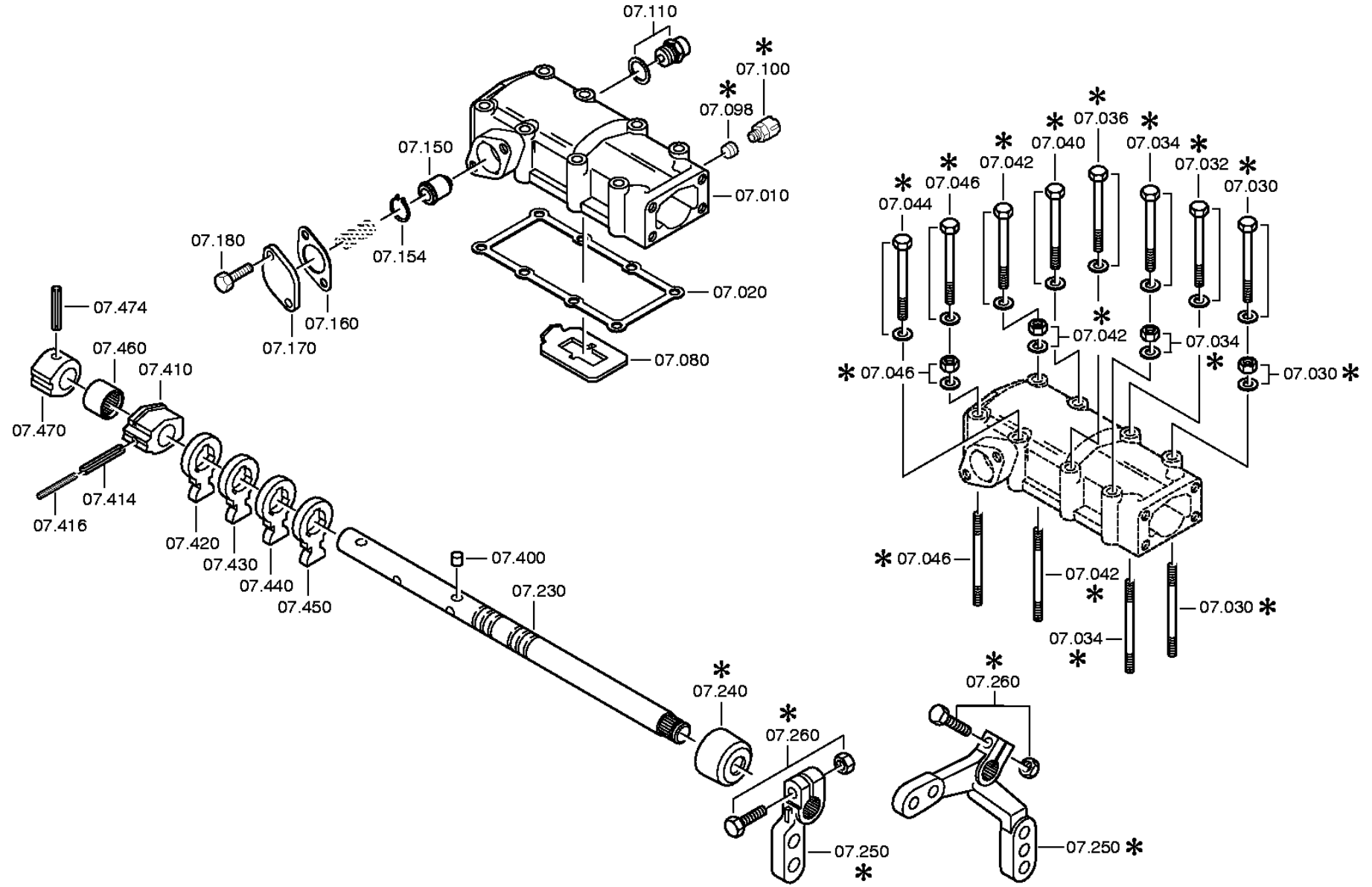
distinta base: 1310 050 308 S 6-85 / SG*LR*ANGEFL*DW-SE *HECK / NEFAZ
figura: 061.06.40 PARTIC.RACCORDO

* secondo la distinta base



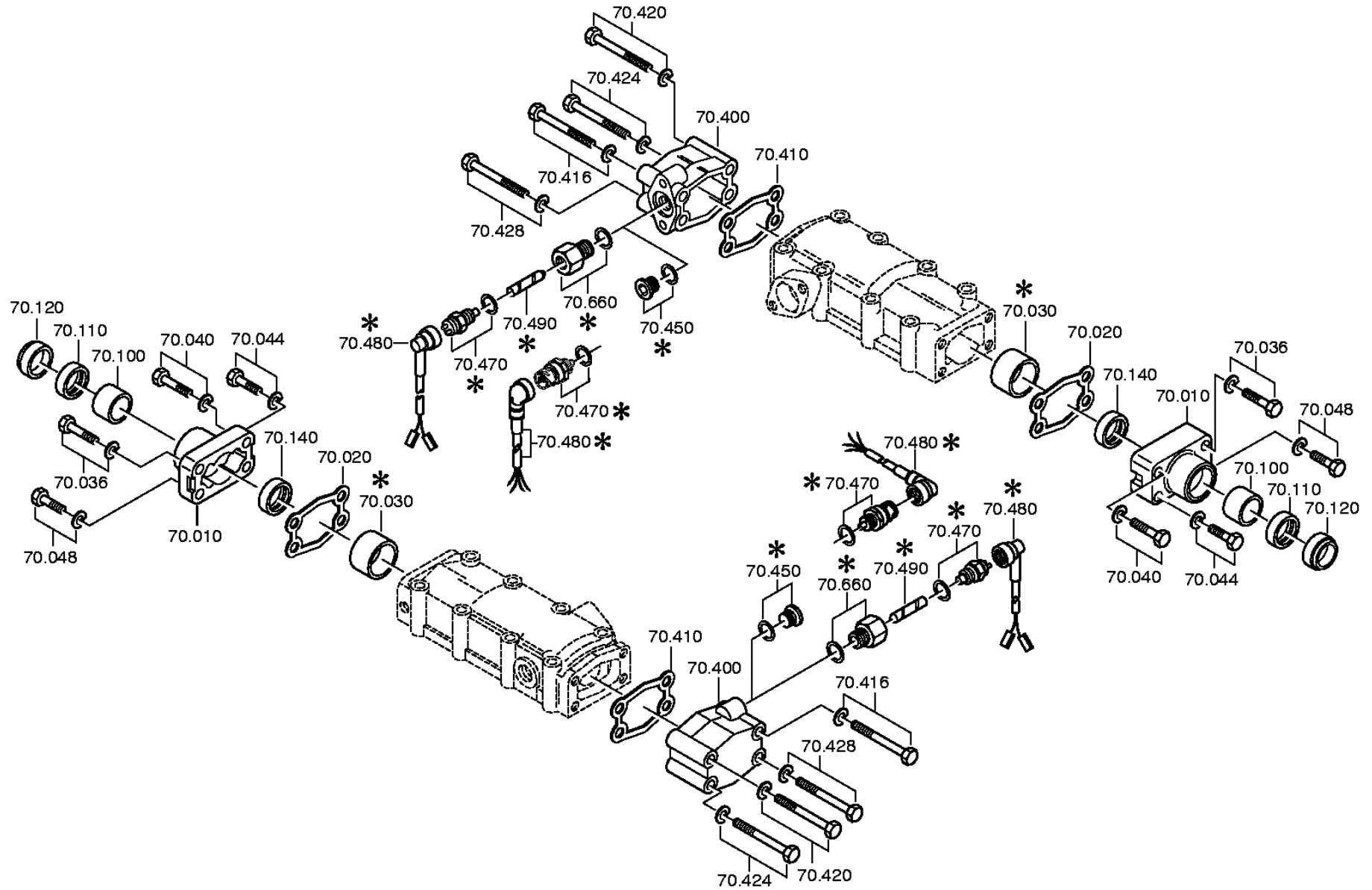
distinta base: 1310 050 308 S 6-85 / SG*LR*ANGEFL*DW-SE *HECK / NEFAZ
figura: 061.07.02 SCATOLA COMANDO

* secondo la distinta base



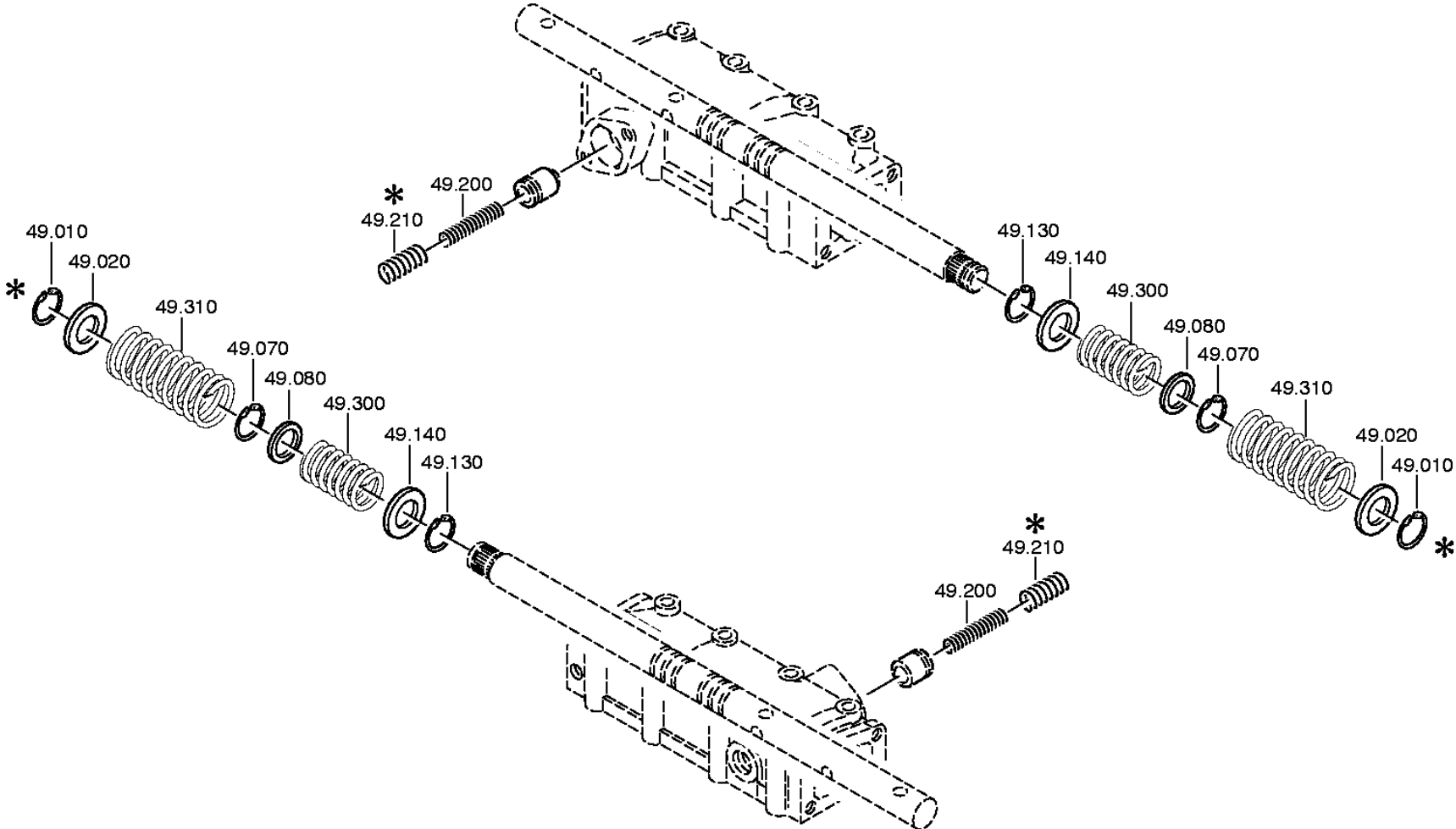
distinta base: 1310 050 308 S 6-85 / SG*LR*ANGEFL*DW-SE *HECK / NEFAZ
figura: 061.08.02 BRACCIO COMANDO

* secondo la distinta base



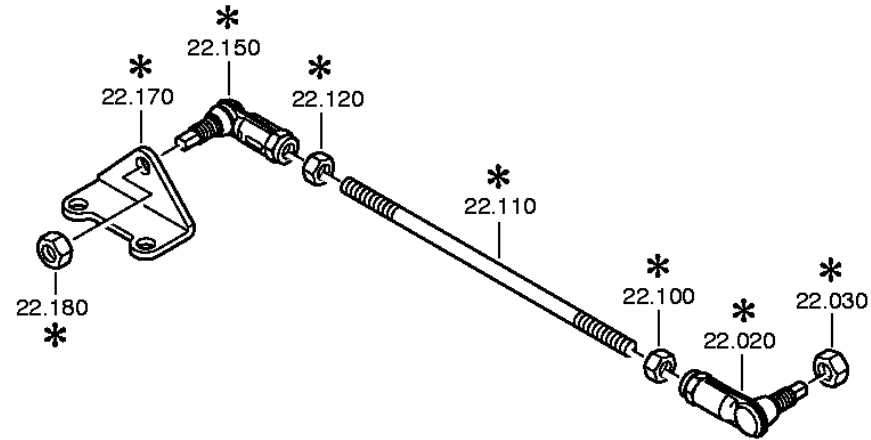
distinta base: 1310 050 308 S 6-85 / SG*LR*ANGEFL*DW-SE *HECK / NEFAZ
figura: 061.12.03 GRUPPO MOLLE

* secondo la distinta base



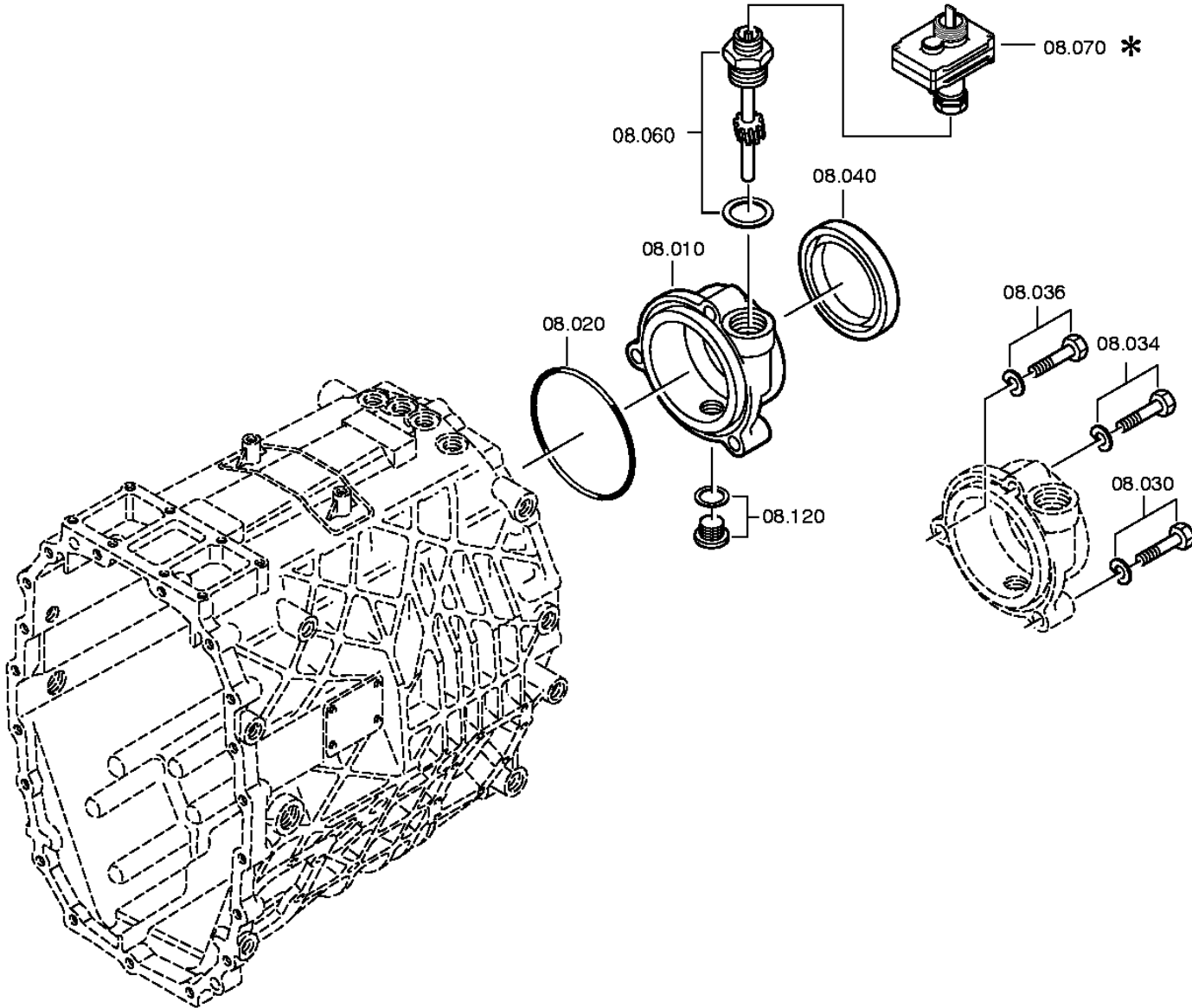
distinta base: 1310 050 308 S 6-85 / SG*LR*ANGEFL*DW-SE *HECK / NEFAZ
figura: 061.14.80 SUPPORTO

* secondo la distinta base



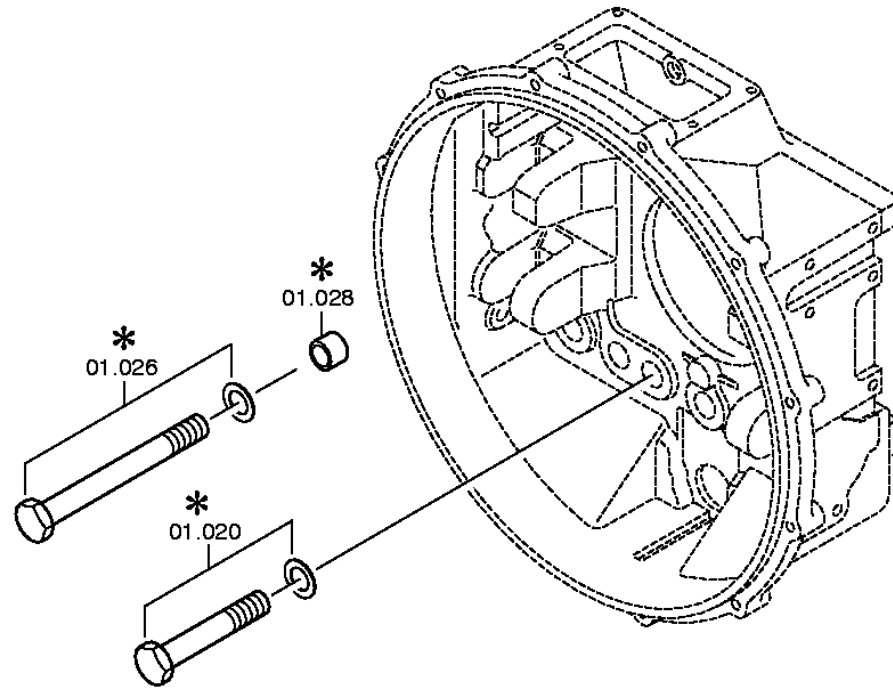
distinta base: 1310 050 308 S 6-85 / SG*LR*ANGEFL*DW-SE *HECK / NEFAZ
figura: 061.18.02 COPERCH.TACHIM.

* secondo la distinta base



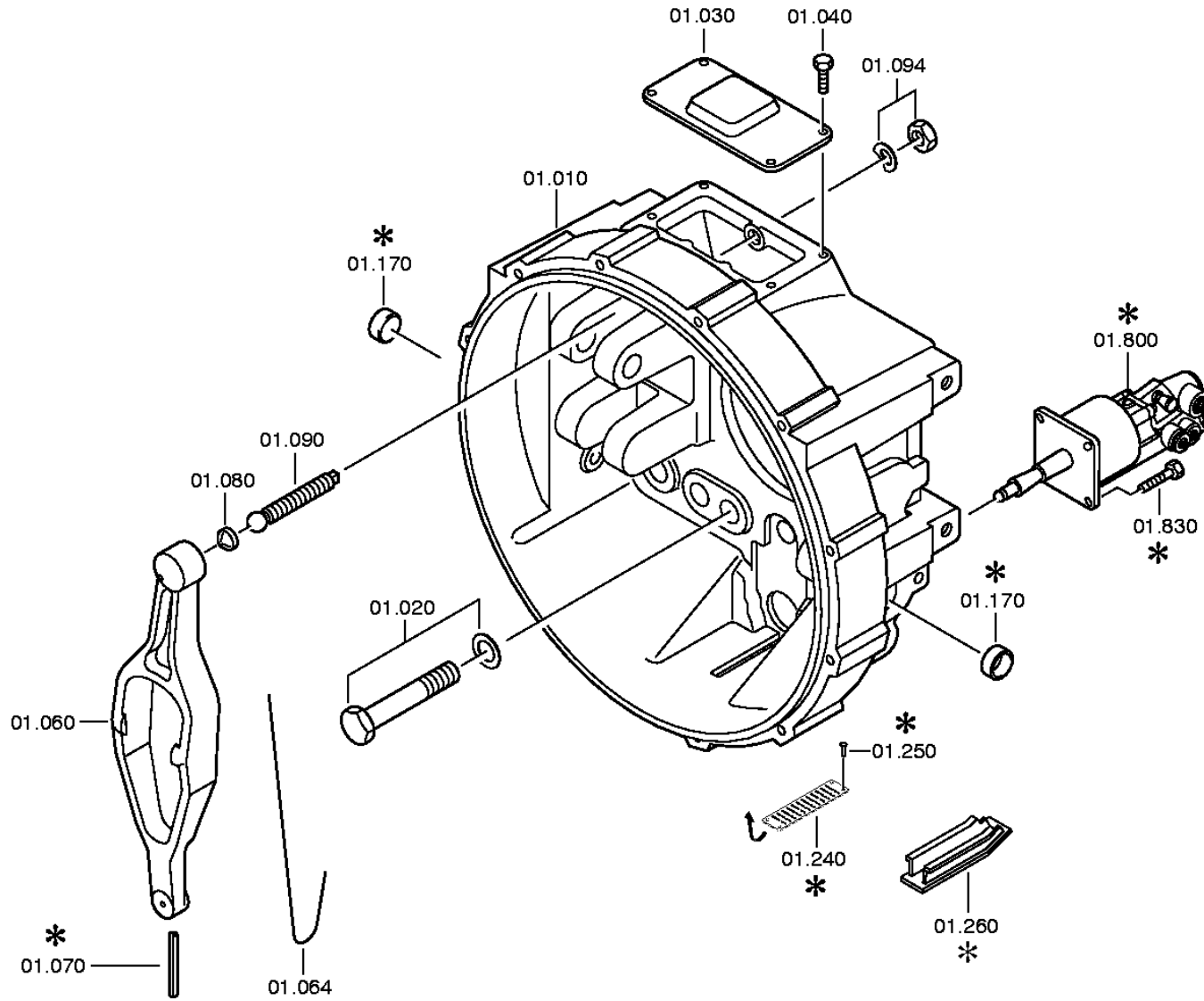
distinta base: 1310 050 308 S 6-85 / SG*LR*ANGEFL*DW-SE *HECK / NEFAZ
figura: 061.92.00 FISSAGGIO

* secondo la distinta base



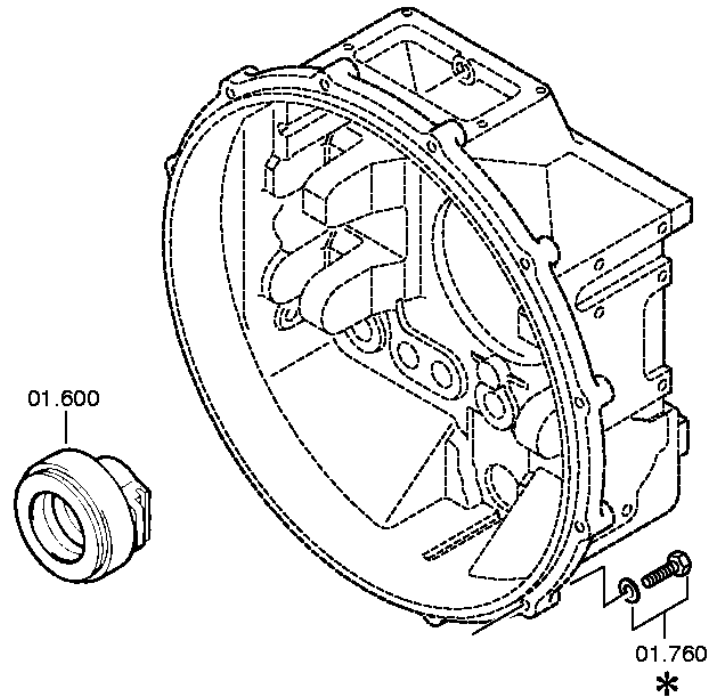
distinta base: 1310 050 308 S 6-85 / SG*LR*ANGEFL*DW-SE *HECK / NEFAZ
figura: 061.92.24 SCATOLA FRIZ.

* secondo la distinta base



distinta base: 1310 050 308 S 6-85 / SG*LR*ANGEFL*DW-SE *HECK / NEFAZ
figura: 061.92.82 DISPOS.DISINNES

* secondo la distinta base



distinta base: 1310 050 308 S 6-85 / SG*LR*ANGEFL*DW-SE *HECK / NEFAZ
figura: 061.95.40 PARTIC.RACCORDO

* secondo la distinta base

