



КПП ZF

16S 1820 TO(16S 1820TO, 16S1820TO)

1341 002 021 (1341002021)

RENAULT

Каталог запчастей

Notes relating to the spare parts catalog

Setup of the spare parts catalog

- Cover sheet
- Technical Cover (only in SDM print)
- Overview of figures
- Figure
- Associated parts list
- Next figure
- Associated parts list
- ...

Figure and parts list



Overview of figures

Bildtafel Figure	Sachnummer Product number	Benennung (Description)	Technische Info Technical info	Description (Benennung)	Menge Quantity	Einheit Unit
068.08.17	1316.170.001	AUSLEGER	WL	SHIFT TURRET	1	Stk
068.08.06	1316.170.031	DECKEL	WL*H-H *VM	COVER	1	Stk
068.08.14	1316.170.808	DECKEL	WL*AUSL+GEH*H-H*HF160N	COVER	1	Stk
08	1316.170.441	ANSCHLUSSTEILE	WL*NG-VORB*RG-SCHL*168N *BAJONETT	CONNECTING PARTS	1	Stk

The "gap" indicates that there is no separate graphics panel (poster) for this assembly
The parts of this assembly are shown with the same mid-section number on the figure

1 Positions and subpositions

Pos.	Sachnummer Product number	Benennung (Description)	Technische Info Technical info	Description (Benennung)	Menge Quantity	Einheit Unit
0370	1315.201.054	RUECKLAUFBOLZEN	KPL.16S151*SG*L= 79	REV.IDLER SHAFT	1	Stk
/0120	0631.329.293	SPANNSTIFT		SLOT. PIN	1	Stk

Positions marked with "/" are the individual items of a completion
For example: Position 0370 contains a centering pin with the position /0120

2 Combinations with standardized parts

Pos.	Sachnummer Product number	Benennung (Description)	Technische Info Technical info	Description (Benennung)	Menge Quantity	Einheit Unit
0630		VERSCHL.SCHR.		SCREW PLUG	1	Stk
	0636.302.067	VERSCHL.SCHR.		SCREW PLUG	1	Stk
	0634.801.249	DICHTRING	A 26 X 31	SEALING RING	1	Stk

The parts list shows the components included in the combination of standardized parts

3 Depiction of position/item number on the figure and in the parts list

01.620 - on the figure 01 relates to the assembly in which the position is included. Due to program-related reasons, it is shown on the figure.

0620 - in the parts list

Pos.	Sachnummer Product number	Benennung (Description)	Technische Info Technical info	Description (Benennung)	Menge Quantity	Einheit Unit
0620	0732.040.736	DRUCKFEDER		COMPRESSION SPRING	1	Stk

4 *-Positions

Positions marked with an * are optional i.e. inclusion in the parts list is not mandatory.
The following note is shown on the figure

je nach Stücklistenausführung
depending on spec. number
*
suivant la nomenclature
secondo la distinta base

5 Parts, dotted display

Parts with dotted display on the figure are only used for orientation of other parts



Pos.	Information	Amendment number
001	Use case -----	
002	Customer Renault Vehicules Industriels	
003	City Saint Priest Cedex	
004	DUNS 27-813-6346	
005	Vehicle / Apparatus -----	
006	Sales Name KERAX PNG	
007	Manufacturer Renault Vehicules Industriels	
008	Engineering Name	
009	Product Use TRUCK	
010	Vehicle/Hardware Type ROAD TRACTOR	
011	SOP	
012	Engine	
013	Sales Designation	
014	Manufacturer AB Volvo	
015	Eng.Displ.	
016	Cylinder	
017	Nom. power 294 kW	
018	RPM at nom. power 1900 1/min	
019	Nom. torque 1900 Nm	
020	RPM at nom. torque 1100 1/min	
021	Classification use case -----	
022	DESIGNATION, CLUTCH MFZ2/400	
023	MANUFACTURER, CLUTCH ZF-SACHS	
024	TOTAL NUMBER OF WHEELS 6	
025	NUMBER OF DRIVING WHEELS 6	
026	DYNAMIC TYRE RADIUS 522 mm	
027	REAR AXLE RATIO 3.7	
031	PERMISS.GROSS VEHICLE WEIGHT 34 t	
032	PERMISS.GROSS COMBIN.WEIGHT 60 t	
033	Product description -----	
034	INSTALLATION POS TRANSMISSION HORIZONTAL LEFT	
035	TRANSMISSION ATTACHMENT FLANGE-MOUNTED	



Pos.	Information	Amendment number
036	RATIO, BOTTOM GEAR 13.8	
037	RATIO, TOP GEAR .84	
038	RATIO, 1ST GEAR 13.8	
039	RATIO, 2ND GEAR 11.54	
040	RATIO, 3RD GEAR 9.49	
041	RATIO, 4TH GEAR 7.93	
042	RATIO, 5TH GEAR 6.53	
043	RATIO, 6TH GEAR 5.46	
044	RATIO, 7TH GEAR 4.57	
045	RATIO, 8TH GEAR 3.82	
046	RATIO, 9TH GEAR 3.02	
047	RATIO, 10TH GEAR 2.53	
048	RATIO, 11TH GEAR 2.08	
049	RATIO, 12TH GEAR 1.74	
050	RATIO, 13TH GEAR 1.43	
051	RATIO, 14TH GEAR 1.2	
052	RATIO, 15TH GEAR 1	
053	RATIO, 16TH GEAR .84	
054	RATIO, 1ST GEAR REVERSE 12.92	
055	RATIO, 2ND GEAR REVERSE 10.8	
056	SET OF RATIOS SG	
057	UEBERSETZUNGSREIHE BASIS DG	
058	NUMBER OF PLANETARY GEARS 5	
059	UEBERSETZUNG PLANETENSATZ 4.565	
060	AUSF VERZAHNUNG PLANETENSATZ OBLIQUE TOOTHING	
061	DESIGN, SHIFT SYSTEM TURNING SHAFT	
062	POSITION, GEAR SHIFT SYSTEM HORIZONTAL LEFT	
063	DESIGN, SHIFT PATTERN UEH	
064	VERSION SHIFT SUPPORT SERVO	
065	VERSION ACTUATION SHIFT SYSTEM CONTROL CABLE	
066	DESIGN, PRESSURE RELIEF VALVE DBV6	
068	VERSION TUBE R/C PLASTIC-FORM-PIPE	



Pos.	Information	Amendment number
069	VERSION TUBE SERVO WITHOUT PIPING	
070	HINWEIS ZU AUSF SCHALTUNG GEAR SHIFT COVER W/O AIR DIST	
071	AUSF RUECKSCHALTG GASSENSPERRE RADIAL	
072	VERSION TUBE GATE INTERLOCK WITHOUT PIPING	
073	1ST CUSTOMER SPEC SHIFT SYSTEM RANGE INTERLOCK	
074	2ND CUSTOMER SPEC SHIFT SYSTEM GATE INTERLOCK	
079	DIA.THROTTLE VALVE AIR SUPPLY 1.300 mm	
080	SELECTION PATTERN VARIANT GEAR SHIFT PATTERN 1	
081	DESIGN, SEPARATING CLUTCH FULL-SYNCHRONIZED	
082	VERSION OF SYNCHRONIZER 1 1+2 GANG BK-SYNCHR.CARBON	
083	VERSION OF SYNCHRONIZER 2 3+4 GANG BK-SYNCHR.CARBON	
084	REFERENCE LENGTH INPUT SHAFT 109 mm	
085	STANDARD TYPE INPUT SHAFT SAE	
086	NUMBER OF WEDGES INPUT SHAFT 10	
087	VERSION OF INPUT SHAFT FORM C	
088	NOMINAL DIAMETER INPUT SHAFT 2 in	
089	DIAMETER, JOURNAL, INPUT SHAFT 30 mm	
090	TYPE FIT SPIGOTS INPUT SHAFT F7	
091	VER. BEAR. SPIGOTS INPUT SHAFT TAPER ROLLER	
092	LENGTH, INPUT SHAFT 382.5 mm	
093	DIAMETER SHAFT OF INPUT SHAFT 50.3 mm	
094	LENGTH, PROFILE, INPUT SHAFT 120 mm	
095	BUSH VARIANT INPUT SHAFT WITHOUT GROOVE	
096	VERSION BEARING CONSTANT 1 GL	
097	DIAMETER BEARING INPUT SHAFT 99.916 mm	
098	TYPE FIT BEAR. INPUT SHAFT H5	
099	DESIGN,CONN., CLUTCH HOUSING SAE 1	
100	CENTR.DIA,HSG/ENGINE CONNECT. 511.175 mm	
101	NUMBER OF BORES,ENGINE CONN. 12	
102	BORE DIA, ENGINE CONNECTION 13 mm	
104	VERSION OF CLUTCH HOUSING INTEGRATED	
106	VERSION ENGINE CONNECTION NOT FORDABLE	



Pos.	Information	Amendment number
107	POSITION MOUNT. FACE HOUSING 2 WITHOUT GROOVE	
108	LAENGE SPANNLAPPEN RE MOTANSCH 292 mm	
109	AUSFUEHRUNG FREIGANG MOTORANS ENGINE CONNECT.	
113	TYPE OF RELEASE MECHANISM WITH	
114	REF.LENGTH,RELEASE BEAR.FLAN -24 mm	
115	DIAMETER, RELEASE FLANGE 60 mm	
116	TYPE FIT RELEASE BEARING FLA. F8	
117	D-LAGERBUCHSE AUSRUECKUNG LI 35 mm	
120	ASSEMBLY POS. CLUTCH CYLINDER 6	
121	OUTER DIA. OUTPUT FLANGE RA 180 mm	
122	NO.OF BORES OUTPUT FLANGE HA1 4	
124	BORE DIA. OUTPUT FLANGE RA 15 mm	
128	CORROS.PROTECTION, OUTP.FLANGE COATED	
129	REF. LENGTH OUTPUT FLANGE RA 211.5 mm	
130	DIMENSION SHIFT TURRET DIST. 300 mm	
131	MEAS. LOC. SHIFT TURRET DIST. SHIFT LEVER-LOCATION	
133	RADIUS SELECTOR LEVER 68.000 mm	
134	SELECTOR LEVER POSITION B	
135	DESIGN OFFSET SELECTOR LEVER OUTSIDE	
136	LENGTH OFFSET SELECTOR LEVER 27.000 mm	
138	RADIUS 1 SHIFT LEVER 70 mm	
141	SHIFT LEVER CONNECTION HEXAGON	
142	DESIGN, OFFSET, SHIFT LEVER INSIDE	
144	LEVER POSITION SHIFTING OUTPUT A	
151	SPRING ARRANGEMENT Q4	
152	SPRING FORCE DETENT PLUNGER RG 90 N	
156	SELECTOR SPRING FORCE, OUTSIDE 17 N	
161	SWITCH, REVERSE GEAR y	
162	DESIGN, RG (REV.GEAR) SWITCH CLOSING	
163	DESIGN, CONNECTION, RG SWITCH DIN BAYONET	
164	CODE SWITCH RG A2	
165	PROT. CAP SWITCH, REVERSE GEAR y	



Pos.	Information	Amendment number
166	NOTE ON SWITCH, REVERSE GEAR G.SHIFT SHAFT	
167	SWITCH, NEUTRAL GEAR y	
168	DESIGN,NG(NEUTRAL GEAR)SWITCH OPENING SWITCH	
169	DESIGN, CONNECTION, NG SWITCH DIN BAYONET	
170	CODE SWITCH NG A1	
171	PROT.CAP SWITCH, NEUTRAL GEAR y	
172	PRESSURE SWITCH y	
173	DESIGN PRESSURE SWITCH CLOSING	
174	DESIGN CONN. PRESSURE SWITCH DIN BAYONET	
175	CODE PRESSURE SWITCH A3	
176	PROTECTING CAP PRESS.SWITCH y	
192	FUNCTION OF R/C SWITCH GP	
193	DESIGN, GP SWITCH PREPARED	
196	PROTECTING CAP GP SWITCH n	
197	FUNCTION OF S/G SWITCH GV	
198	DESIGN, GV SWITCH PREPARED	
201	PROTECTING CAP GV SWITCH n	
233	ATTACHM.POS.HEAT EXCHANGER IN FRONT LEFT PREPARED	
234	VER. TRANSMISSION VENTILATION PLUG CONNECTION 90 DEGREE	
235	LENGTH, VENT TUBE 2200.000 mm	
236	POS.TRANSMISSION VENTILATION IN FRONT	
245	VERSION PULSE SENSOR SFA H68 WITHOUT GROOVE	
249	PROT. CAP PULSE SENSOR SFA H68 n	
250	NO. PULSES PULSE SENSOR SFAH68 6 IMP/U	
255	VER. PULSE SENSOR TRANSM. H70 WITHOUT GROOVE	
259	PROT. CAP PULSE SENSOR TM H70 n	
260	NO PULSES PULSE SENSOR TM H70 6 IMP/U	
261	ASSEMBLY POS PULSE SENSOR H70 1	
262	NOTE ASS. POS PULSE SENSOR H70 INSTALLATION DRAWING	
274	POSITION, OIL FILLER HOUSING LEFT+RIGHT	
275	NOTE ON OIL FILL FILL IN OVERFLOW	
276	OIL CAPACITY, GEARBOX 11 dm3	



Pos.	Information	Amendment number
278	OIL GRADE PERMISSIBLE ACC. TO TE-ML02	
279	OIL CLASS FIRST FILLING E	
280	CODING OUTER CONSERVATION KA1	
281	SCOPE OUTER CONSERVATION T	
282	CODING INNER CONSERVATION KI1	
283	CONSERVATION SPECIFICATION ZFN 916	
284	COLOR JET BLACK	
285	COLOUR CLASSIFICATION ACC. TO RAL 9005	
286	PAINTING, ZF STANDARD 915 W	
287	Documents -----	
288	16 S 1820 TO Assembly 1341.002.021	
289	Drawing 1315.051.503	
290	Drawing 1316.101.035	
291	TURN.SHAFT CONT Drawing 1341.173.027	
292	TURN.SHAFT CONT Assembly 1341.173.027	
293	TURN.SHAFT CONT Model 1341.173.027	
294	16-SPEED GEARB. Drawing 1341.650.007	
295	16-SPEED GEARB. Assembly 1341.650.007	
296	1315.051.200 Drawing 1315.051.200	
297	SET OF SPRINGS Drawing 1341.149.020	
298	Alias ID -----	
299	Renault Vehicules Industriels 7420848824	

Assembly group overview

Material number: 1341.002.021

16 S 1820 TO / RENAULT TRUCKS



Page 1 from 2

Graphics	Pos.	Material number	Name	Quantity	Amend. no.	Techn. Info.
068.01.05-1	110	1315.101.123	GEARBOX HOUSING	1		
068.01.52-1	120	1315.101.521	GEARBOX HOUSING	1		
068.02.55-1	140	1315.102.436	CONNPLATE	1		
068.02.82-1	150	1315.102.811	INPUT SHAFT	1		
068.02.02-1	910	1315.102.072	INPUT SHAFT	1		
068.03.80-1	180	1316.103.803	LAYSHAFT	1		
068.03.01-1	920	1315.103.019	LAYSHAFT	1		
068.04.02-1	930	1315.104.030	MAIN SHAFT	1		
068.06.01-1	230	1315.106.008	GEAR SHIFT SYSTEM	1		
068.06.43-1	234	1315.106.422	CONNECTING PARTS	1		
068.06.80-1	238	1315.106.800	GEAR SHIFT SYSTEM	1		
068.07.92-1	292	1341.108.804	GEAR SHIFT HOUSING	1		
068.07.46-1	910	1341.108.003	GEAR SHIFT HOUSING	1		
068.07.42-1	914	1341.108.400	GEAR SHIFT SHAFT	1		
068.07.82-1	924	1341.108.004	DETENT	1		
062.08.30-1	954	1316.171.403	END COVER	1		
068.08.45-1	960	1316.171.431	PNEUMSERVUNIT	1		
068.09.06-1	934	1341.109.008	CONNECTING PARTS	1		
068.09.08-1	940	1341.109.407	CONNECTING PARTS	1		
068.10.04-1	296	1341.111.800	SELECTOR LEVER	1		
068.10.03-1	932	1341.111.001	SELECTOR LEVER	1		
068.12.25-1	920	1341.149.006	SET OF SPRINGS	1		
068.40.04-1	500	1315.112.014	GV-SHIFT SYSTEM	1		
068.40.40-1	502	1315.112.405	CONNECTING PARTS	1		
068.43.21-1	10	1315.131.047	COVER	1		
068.43.06-1	20	1315.131.050	GP HOUSING	1		
068.43.45-1	24	1315.131.401	CONNECTING PARTS	1		
068.43.40-1	30	1315.131.400	CLOSING COMPONENTS	1		
068.43.80-1	512	1315.131.805	GP HOUSING	1		
068.44.07-1	40	1315.132.015	PLANETARY DRIVE	1		
068.44.47-1	50	1316.132.419	PLANETARY DRIVE	1		

Assembly group overview

Material number: 1341.002.021

16 S 1820 TO / RENAULT TRUCKS

Page 2 from 2



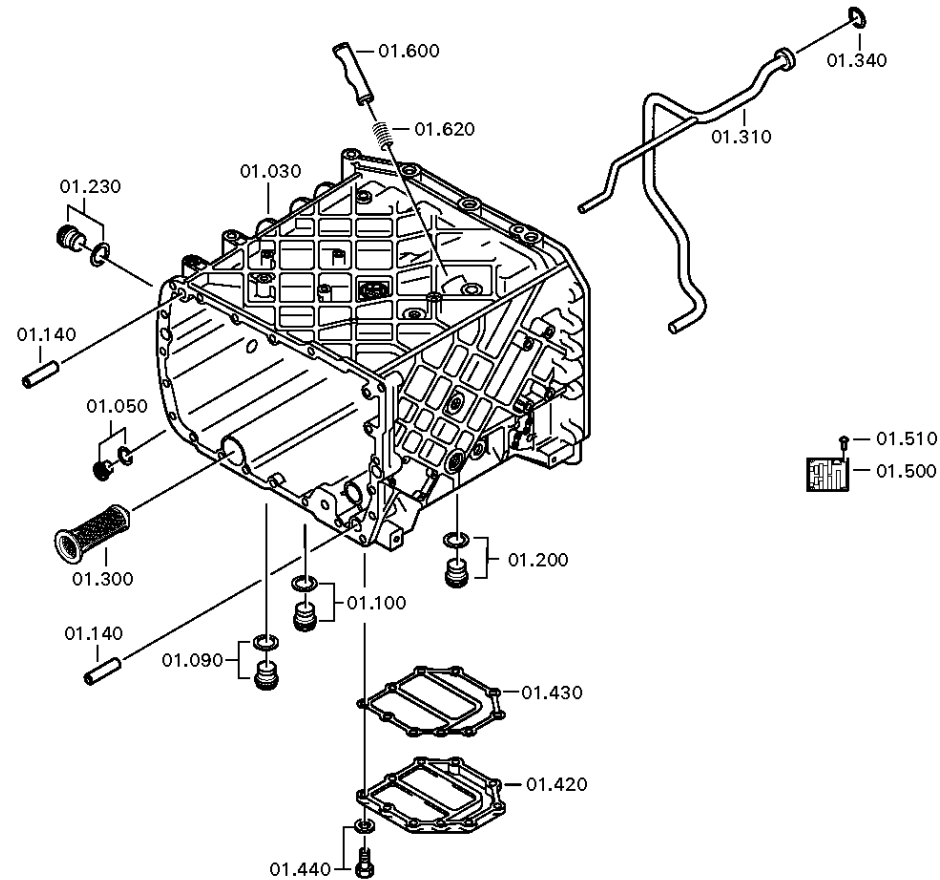
Graphics	Pos.	Material number	Name	Quantity	Amend. no.	Techn. Info.
068.45.04-1	70	1316.133.008	SYNCHRONIZER	1		
068.45.40-1	80	1315.133.405	SYNCHRONIZER	1		
068.46.03-1	90	1315.134.015	GP SHIFT SYSTEM	1		
068.46.41-1	554	1315.134.409	CONNECTING PARTS	1		
068.57.15-1	390	1341.145.001	RANGE SELECTION	1		
068.93.05-1	130	1315.168.016	CLUTCH RELEASE DEVICE	1		

Plant

Page 1 from 2

Material number: 1341.002.021
Plant: 068.01.05-1
GEARBOX HOUSING

16 S 1820 TO / RENAULT TRUCKS
GEARBOX HOUSING

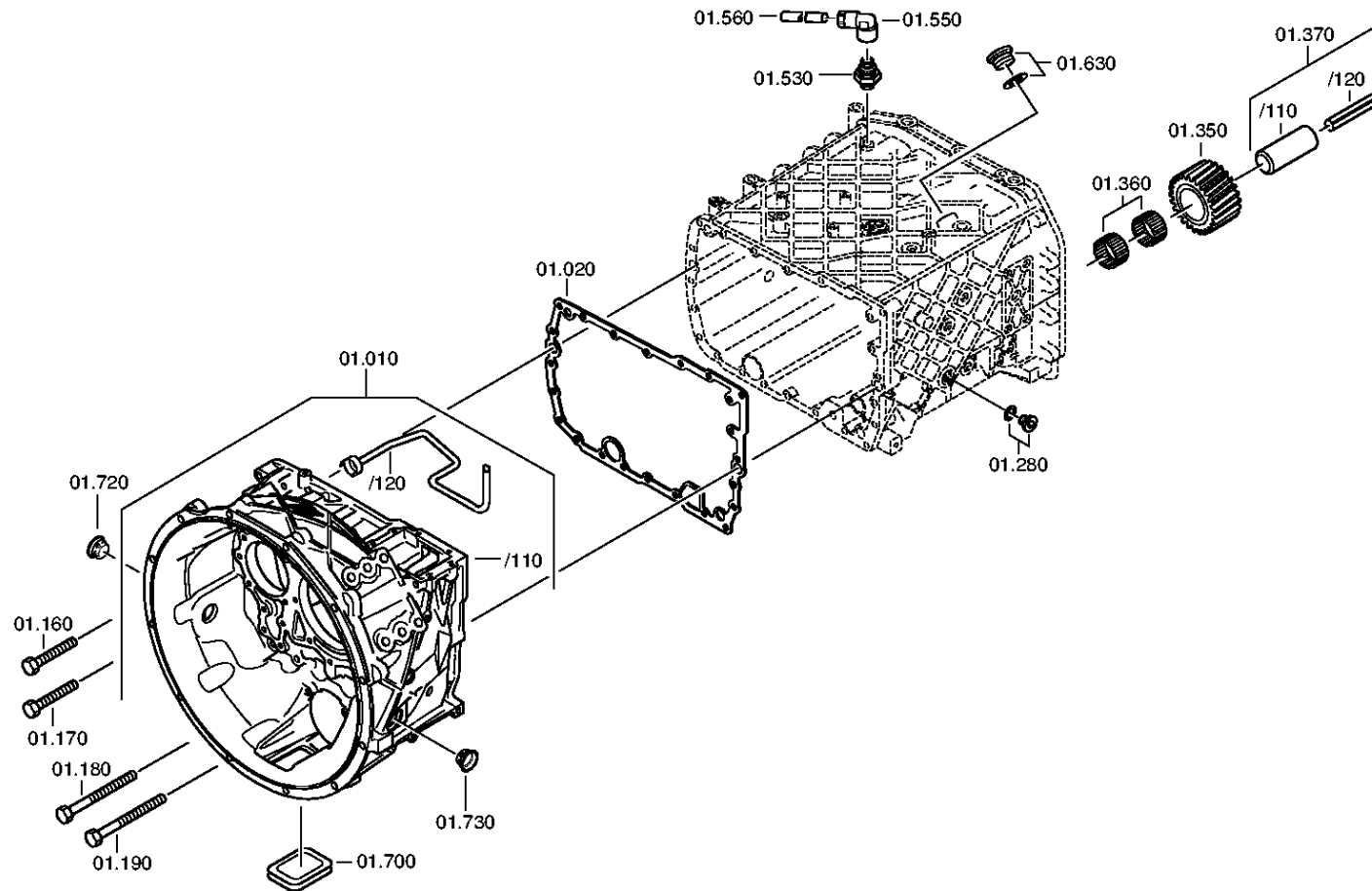


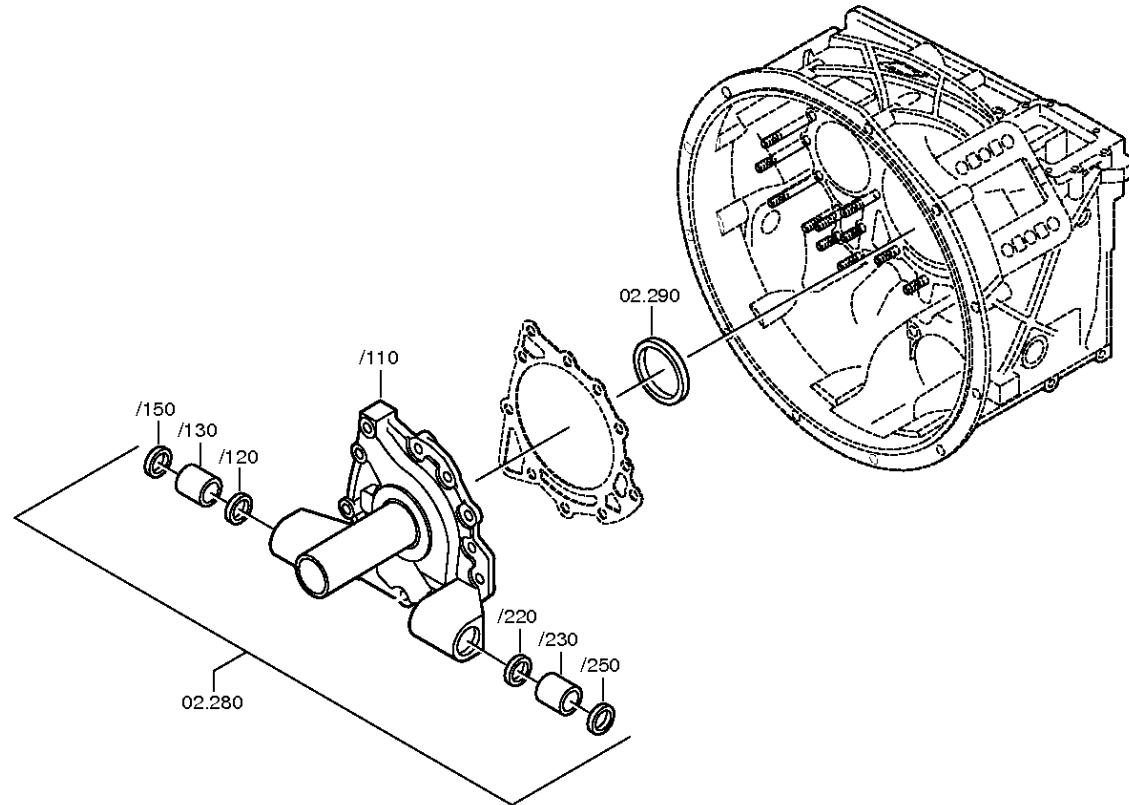
Plant

Page 2 from 2

Material number: 1341.002.021
Plant: 068.01.52-1
GEARBOX HOUSING

16 S 1820 TO / RENAULT TRUCKS
GEARBOX HOUSING



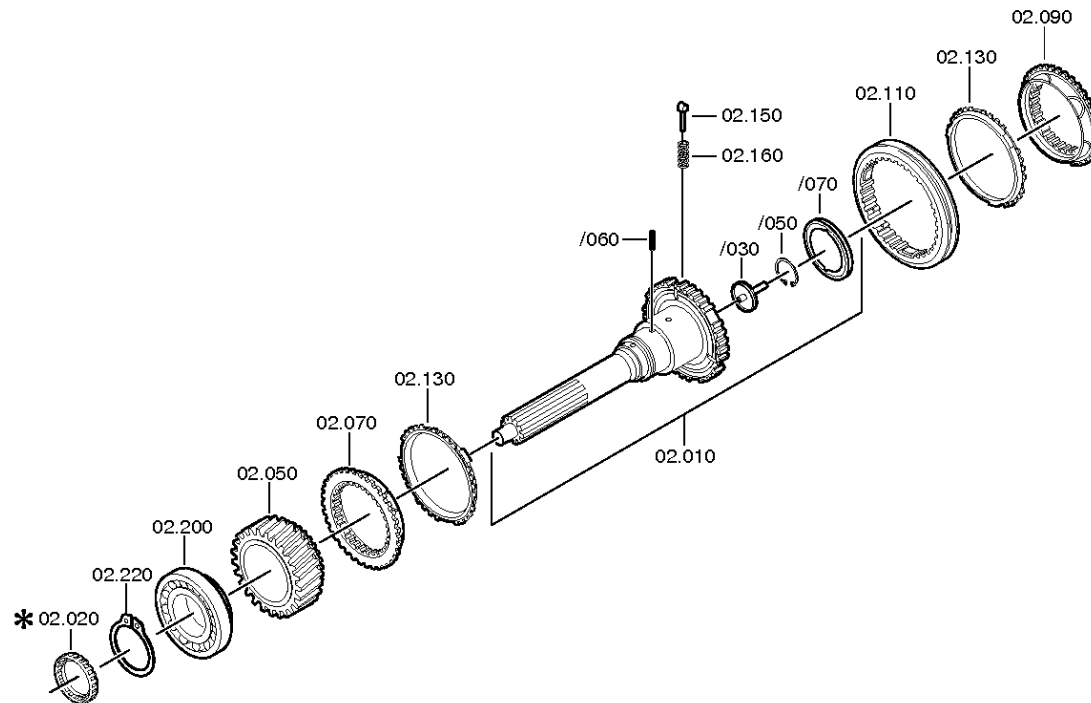


Plant

Page 2 from 3

Material number: 1341.002.021
Plant: 068.02.02-1
INPUT SHAFT

16 S 1820 TO / RENAULT TRUCKS
CONNPLATE

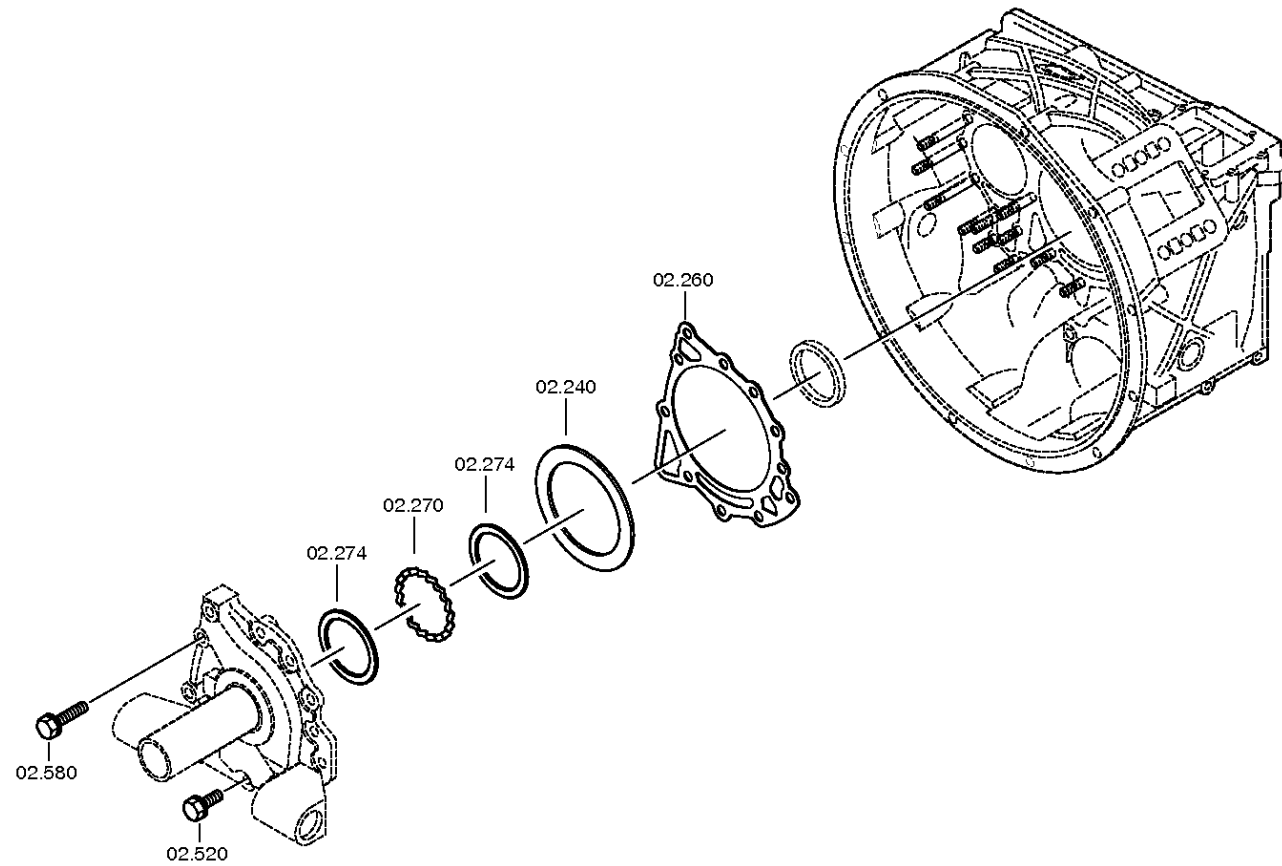


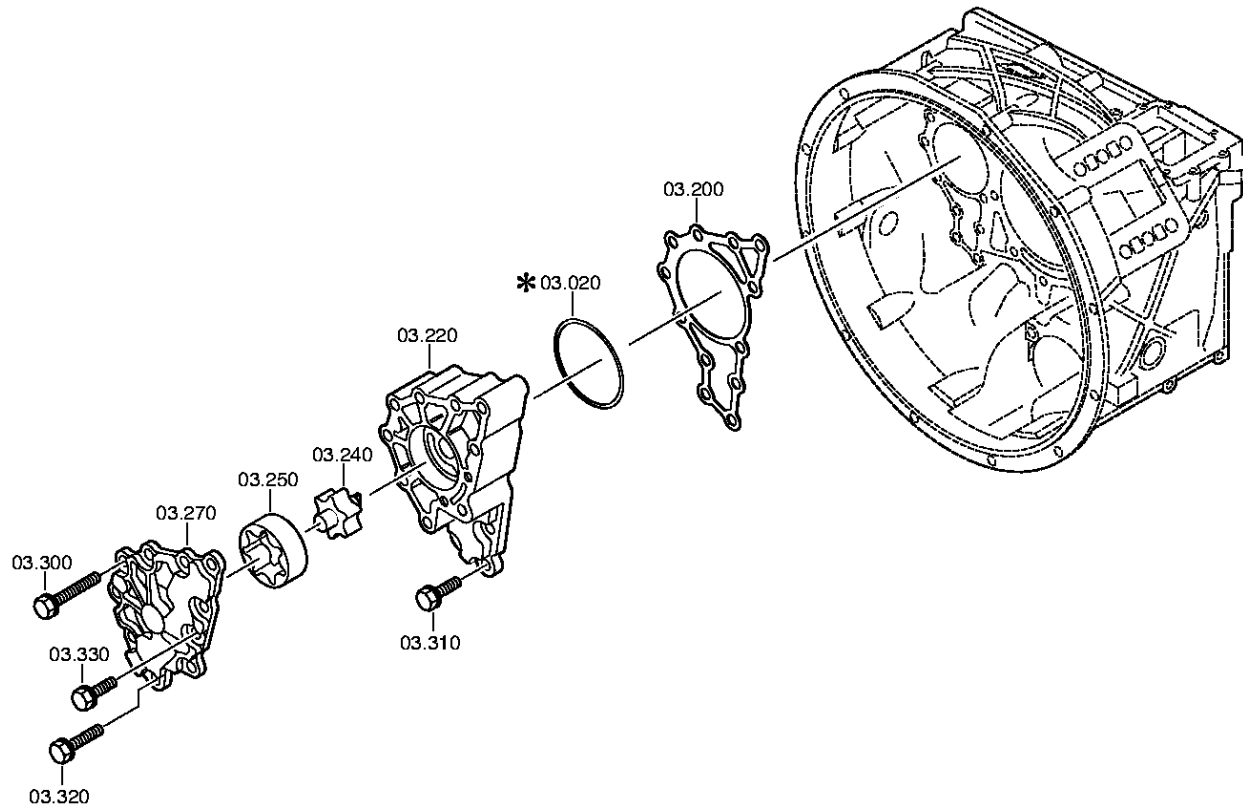
Plant

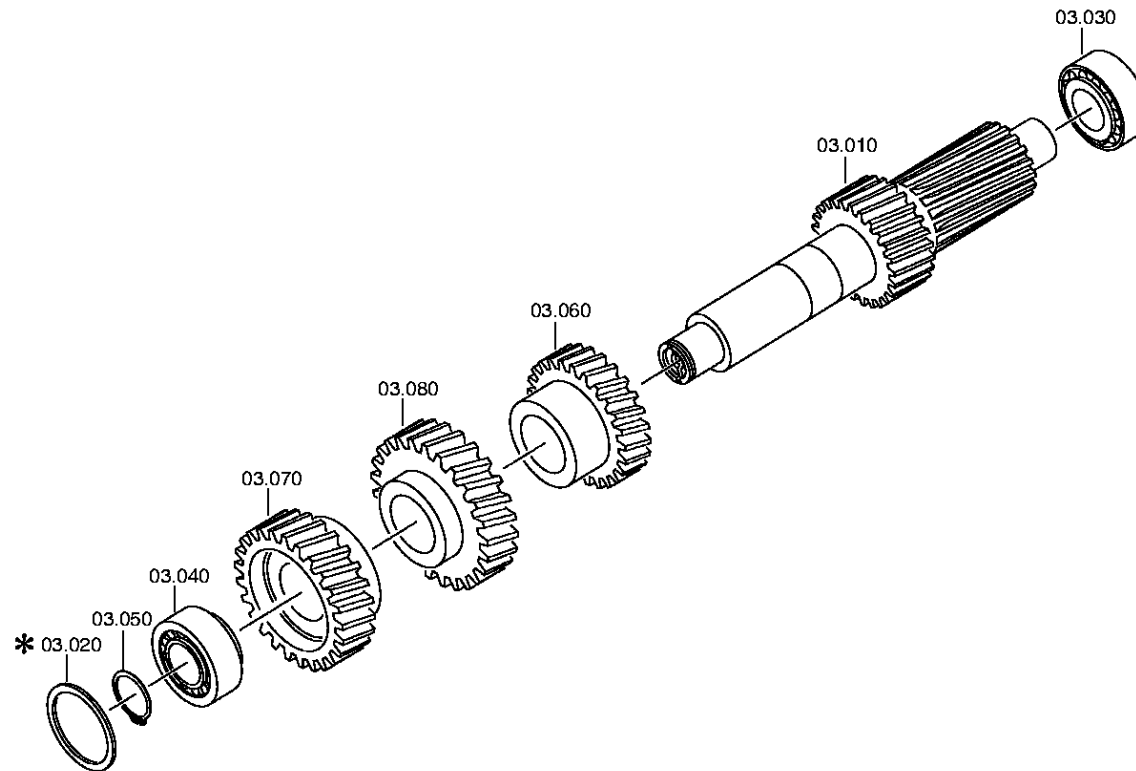
Page 3 from 3

Material number: 1341.002.021
Plant: 068.02.82-1
INPUT SHAFT

16 S 1820 TO / RENAULT TRUCKS
CONNPLATE







Plant

Page 1 from 2

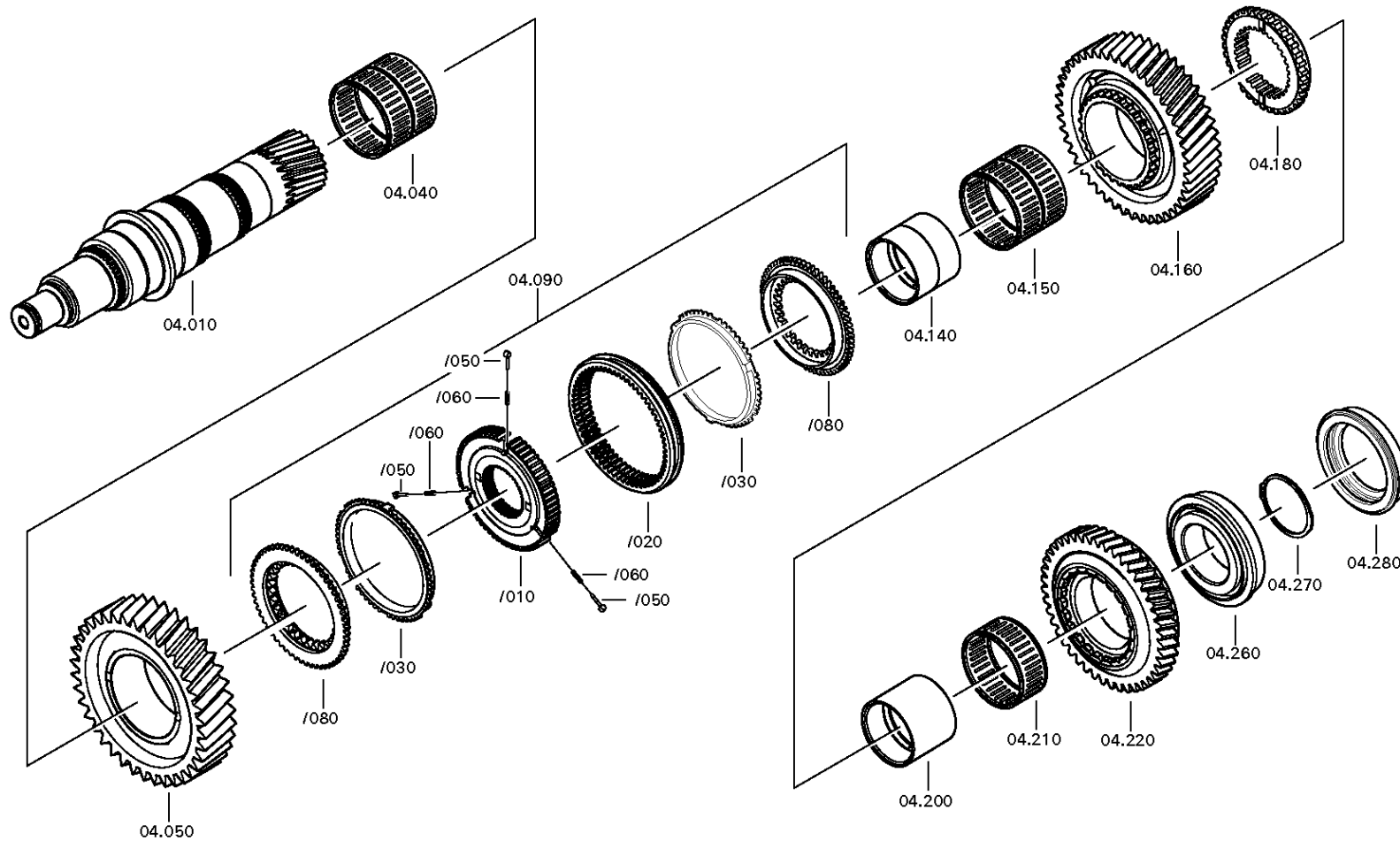
Material number: 1341.002.021

Plant: 068.04.02-1

Material-assembly-group-no: 1315.104.030

16 S 1820 TO / RENAULT TRUCKS

MAIN SHAFT



Plant

Page 2 from 2

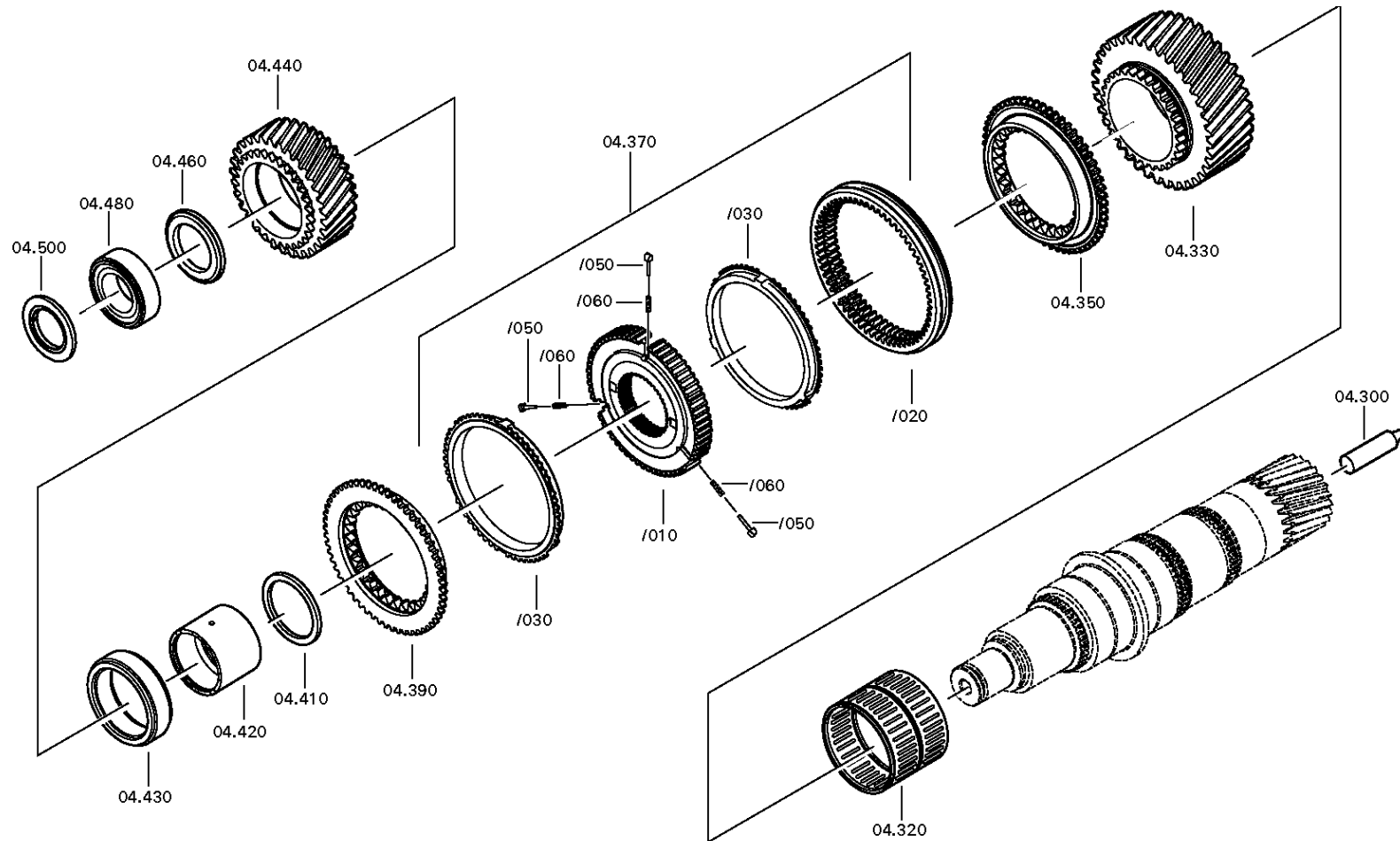
Material number: 1341.002.021

Plant: 068.04.02-2

Material-assembly-group-no: 1315.104.030

16 S 1820 TO / RENAULT TRUCKS

MAIN SHAFT

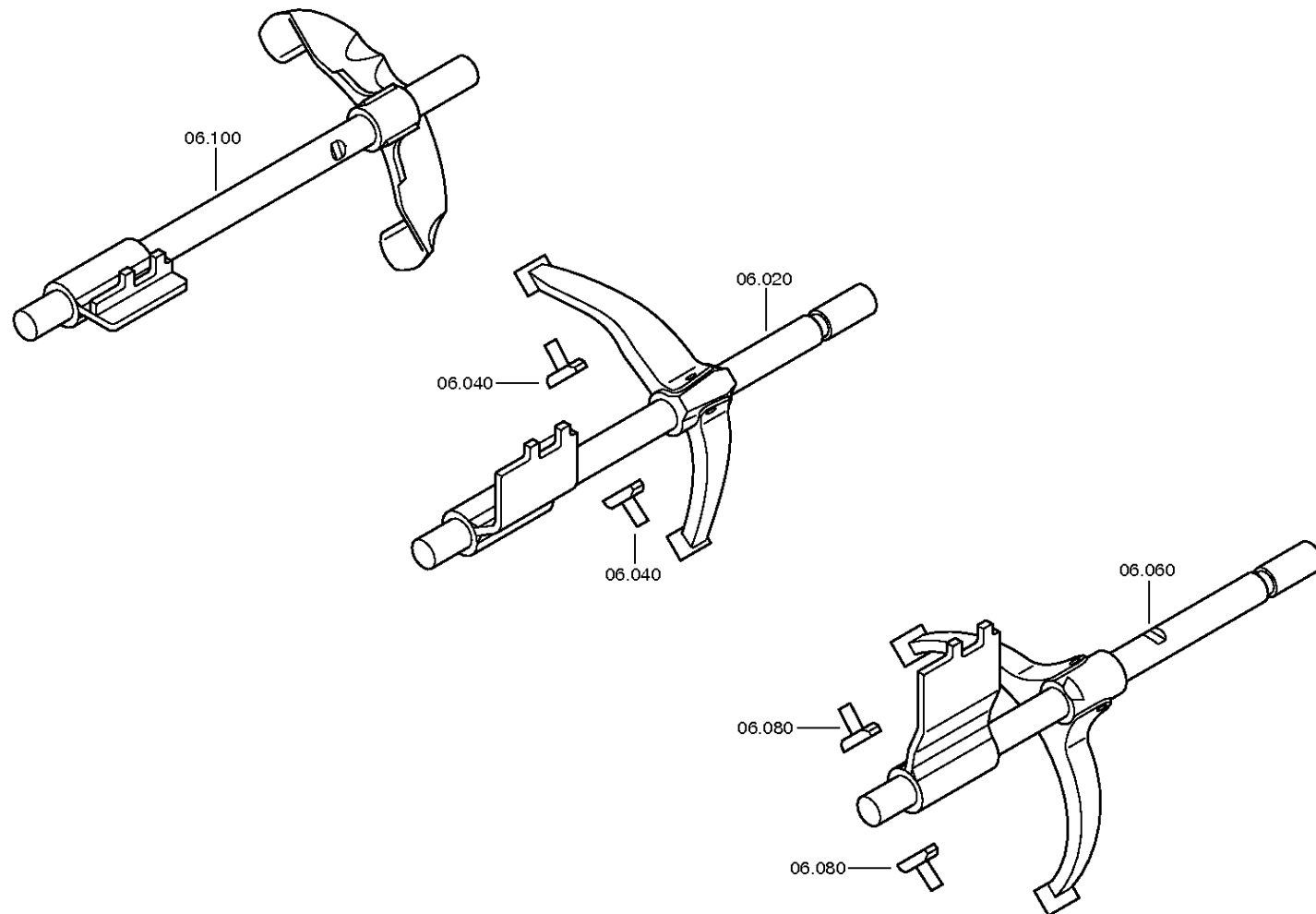


Plant

Page 1 from 3

Material number: 1341.002.021
Plant: 068.06.01-1
GEAR SHIFT SYSTEM

16 S 1820 TO / RENAULT TRUCKS
GEAR SHIFT SYSTEM

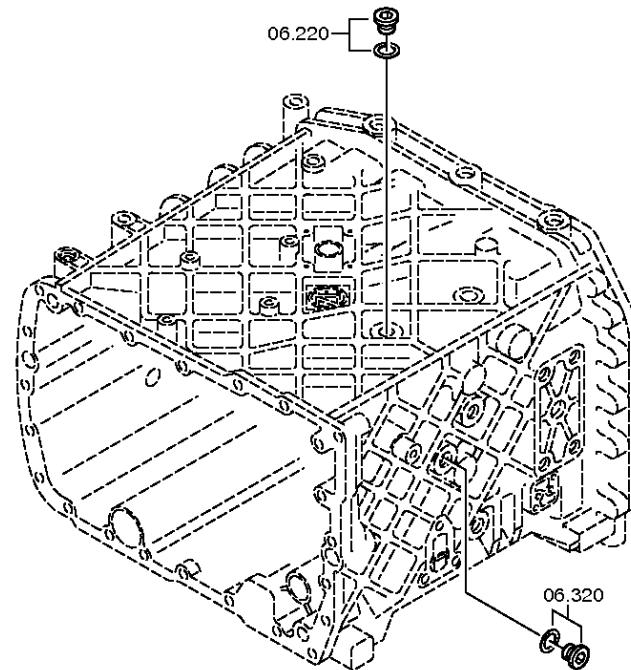


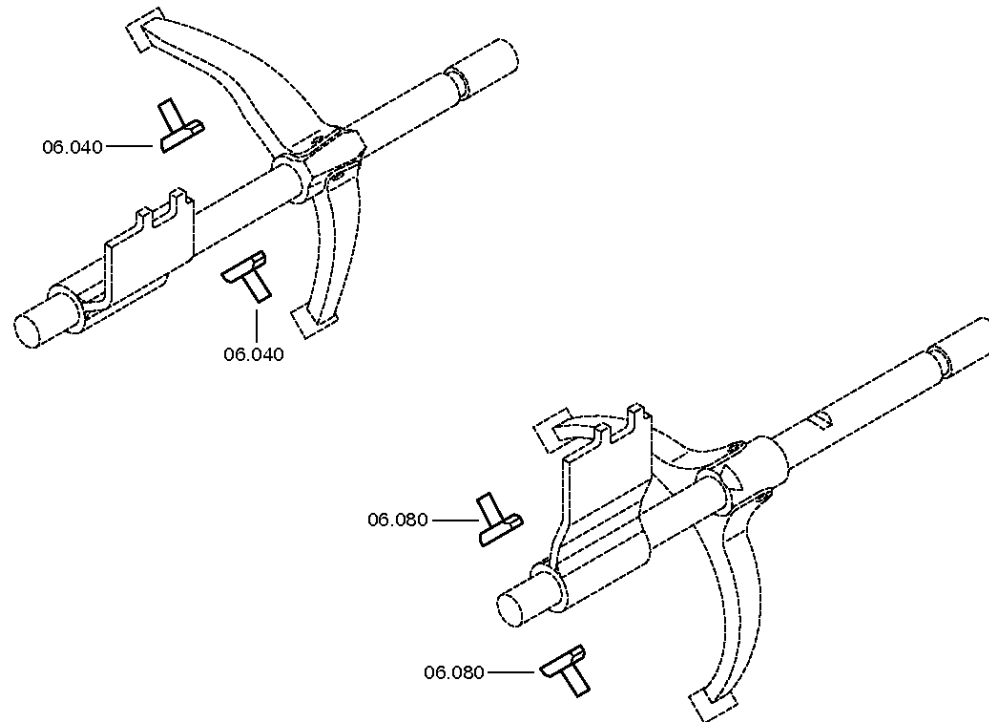
Plant

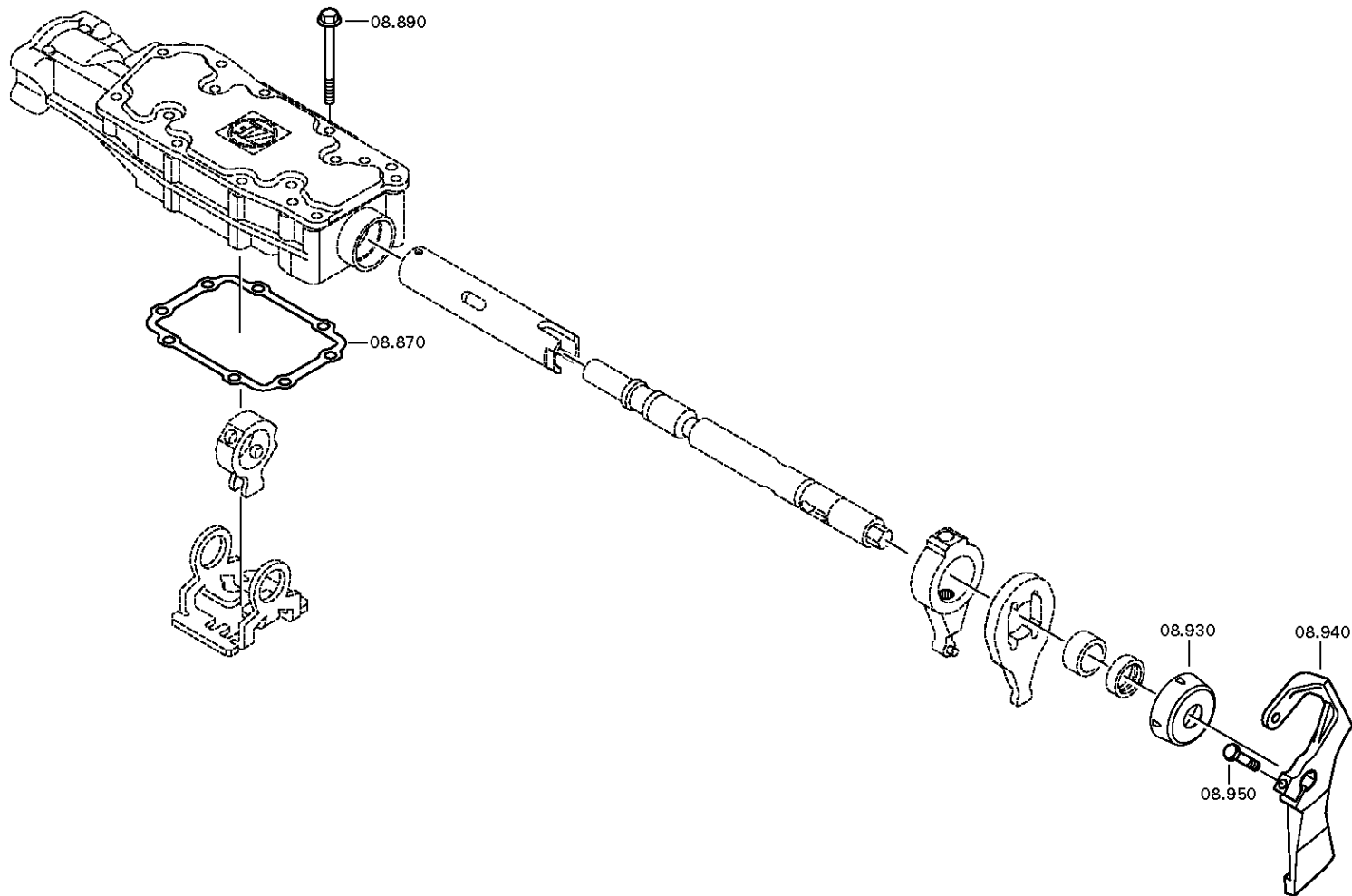
Page 2 from 3

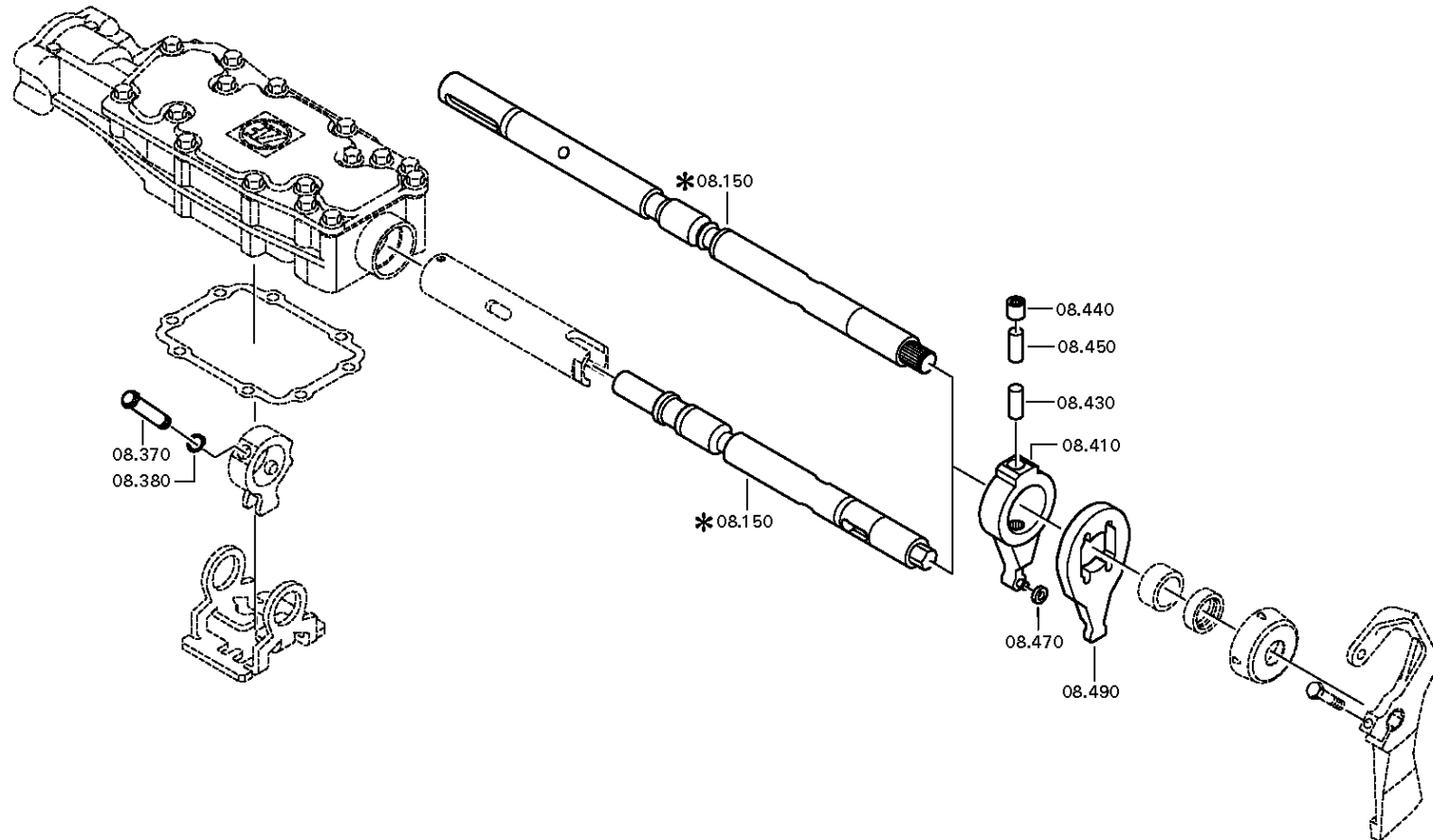
Material number: 1341.002.021
Plant: 068.06.43-1
GEAR SHIFT SYSTEM

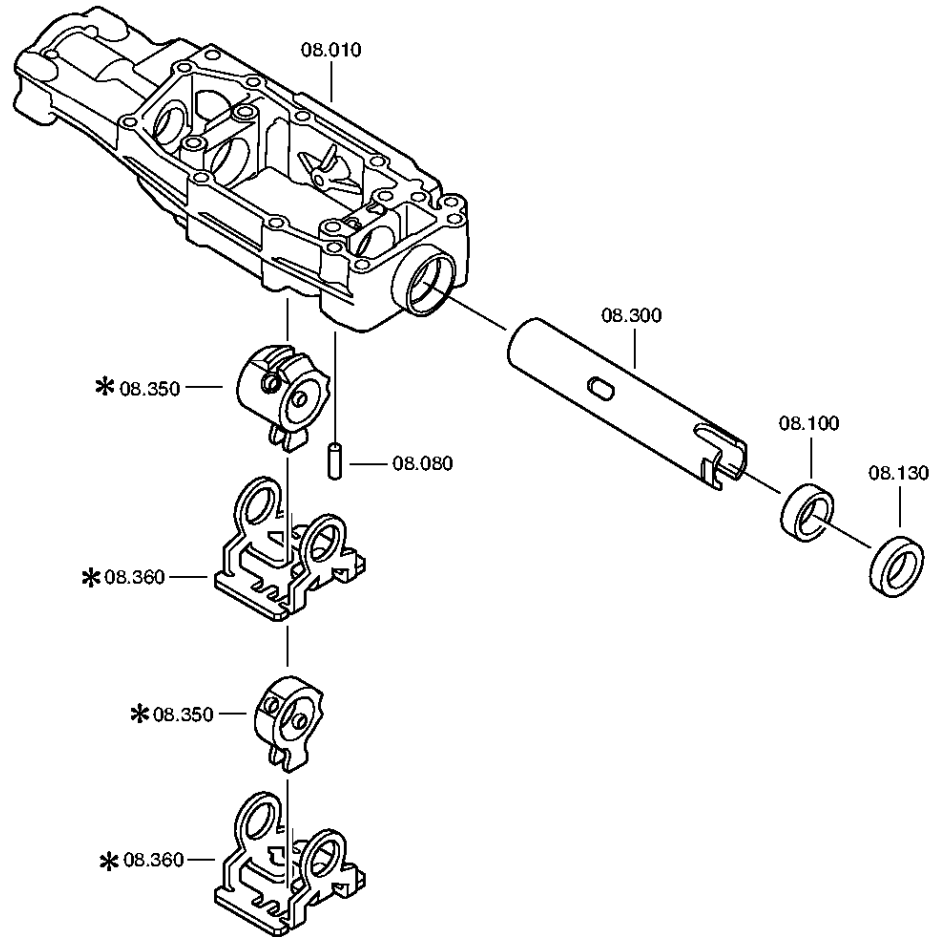
16 S 1820 TO / RENAULT TRUCKS
GEAR SHIFT SYSTEM









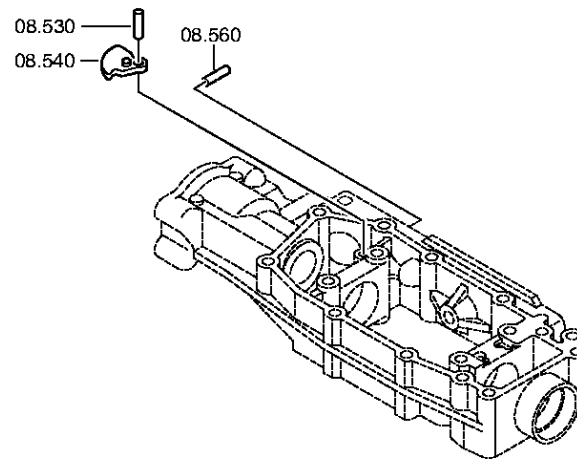


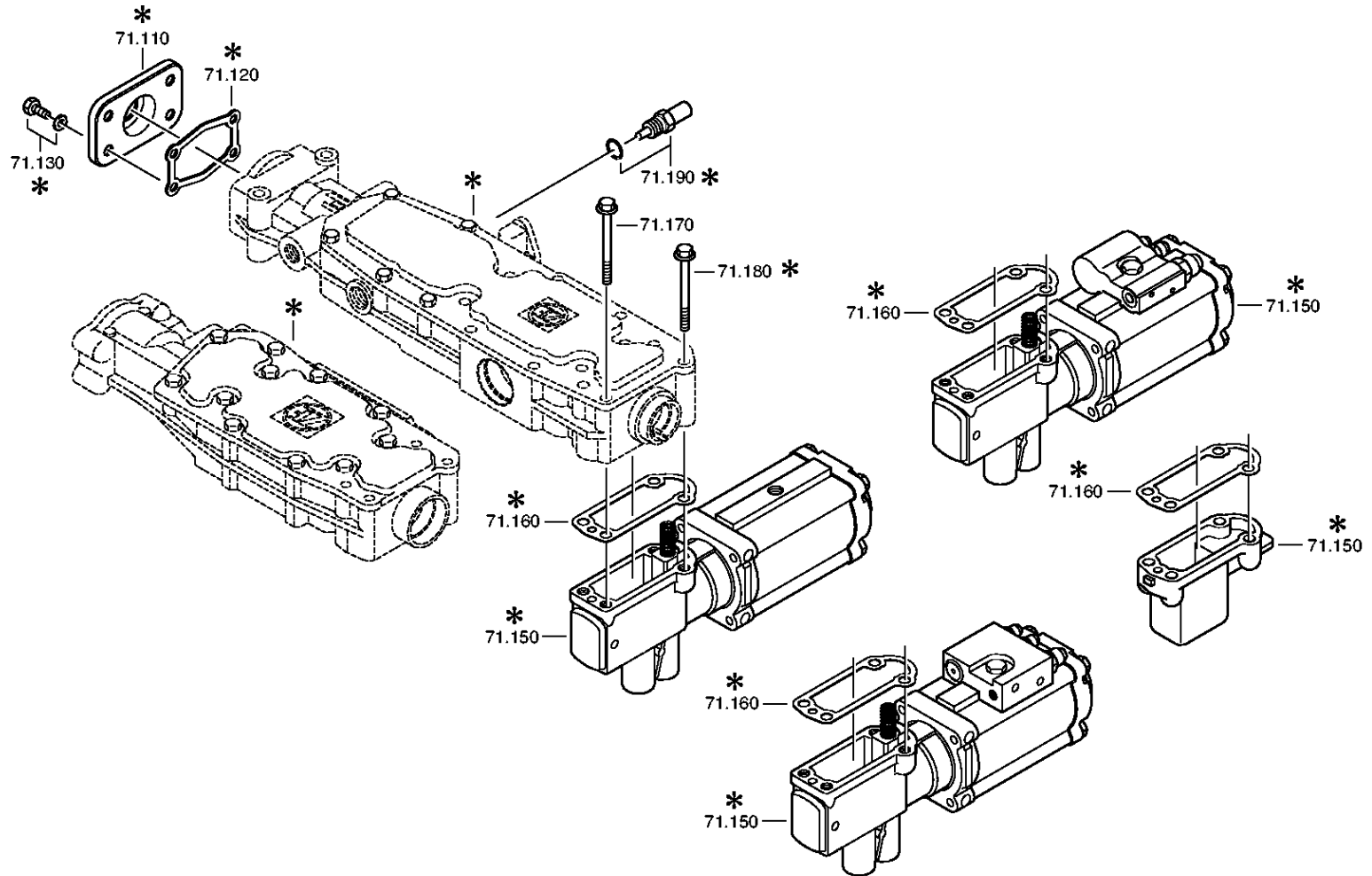
Plant

Page 4 from 4

Material number: 1341.002.021
Plant: 068.07.82-1
GEAR SHIFT SHAFT

16 S 1820 TO / RENAULT TRUCKS
GEAR SHIFT HOUSING





Plant

Page 2 from 2

Material number: 1341.002.021
Plant: 068.08.45-1
END COVER

16 S 1820 TO / RENAULT TRUCKS
END COVER



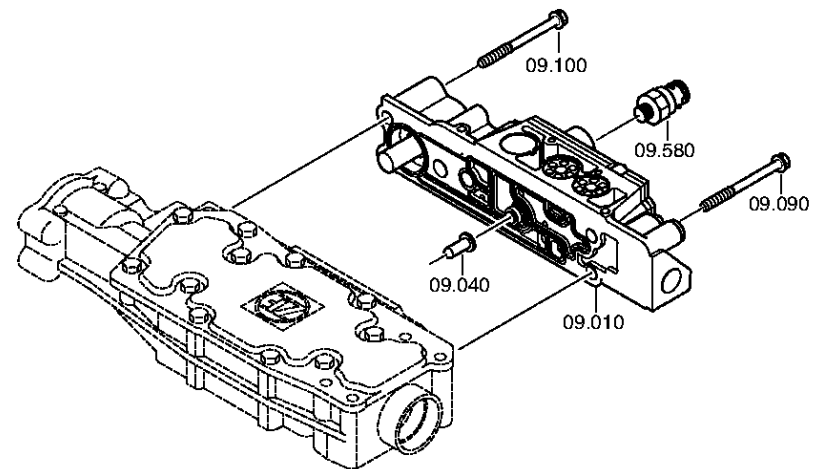
There is presently no plate available for this parts list/ assembly.

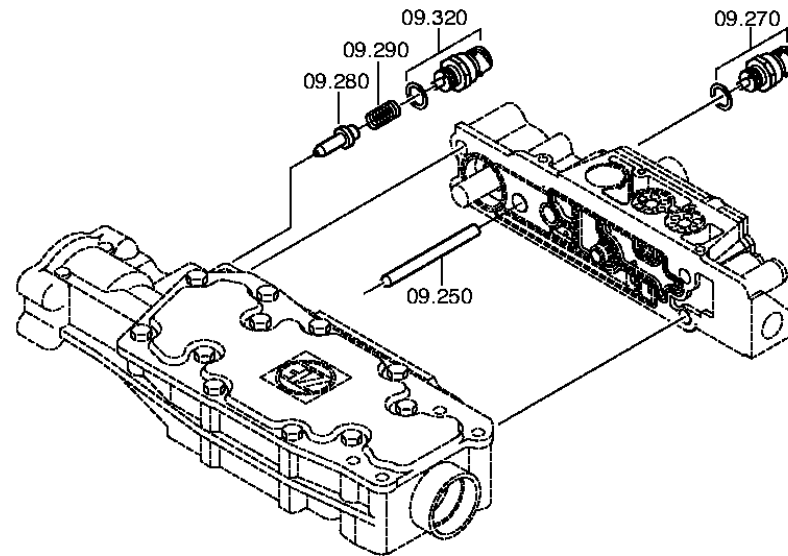
Plant

Page 1 from 2

Material number: 1341.002.021
Plant: 068.09.06-1
CONNECTING PARTS

16 S 1820 TO / RENAULT TRUCKS
CONNECTING PARTS



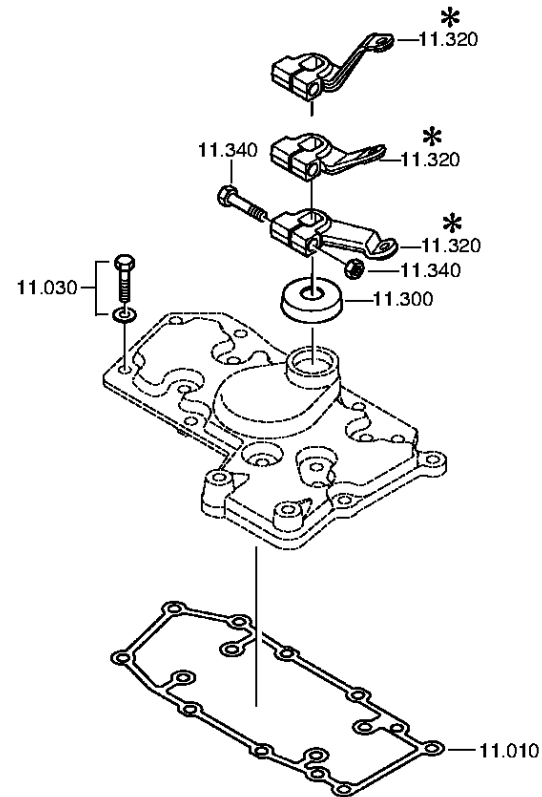


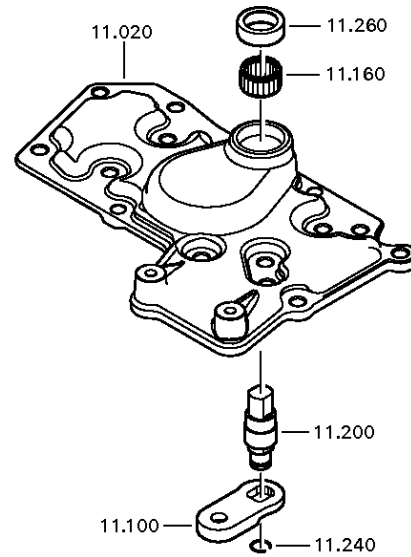
Plant

Page 1 from 2

Material number: 1341.002.021
Plant: 068.10.04-1
SELECTOR LEVER

16 S 1820 TO / RENAULT TRUCKS
SELECTOR LEVER





Plant

Page 1 from 1

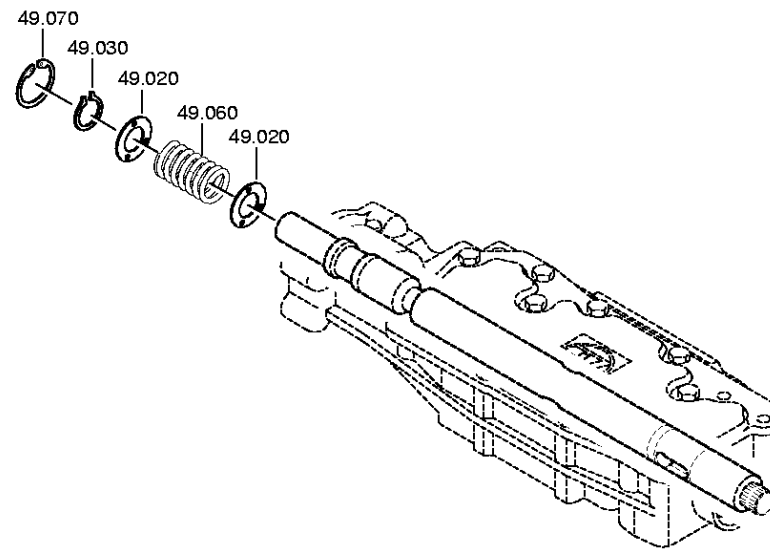
Material number: 1341.002.021

Plant: 068.12.25-1

Material-assembly-group-no: 1341.149.006

16 S 1820 TO / RENAULT TRUCKS

SET OF SPRINGS

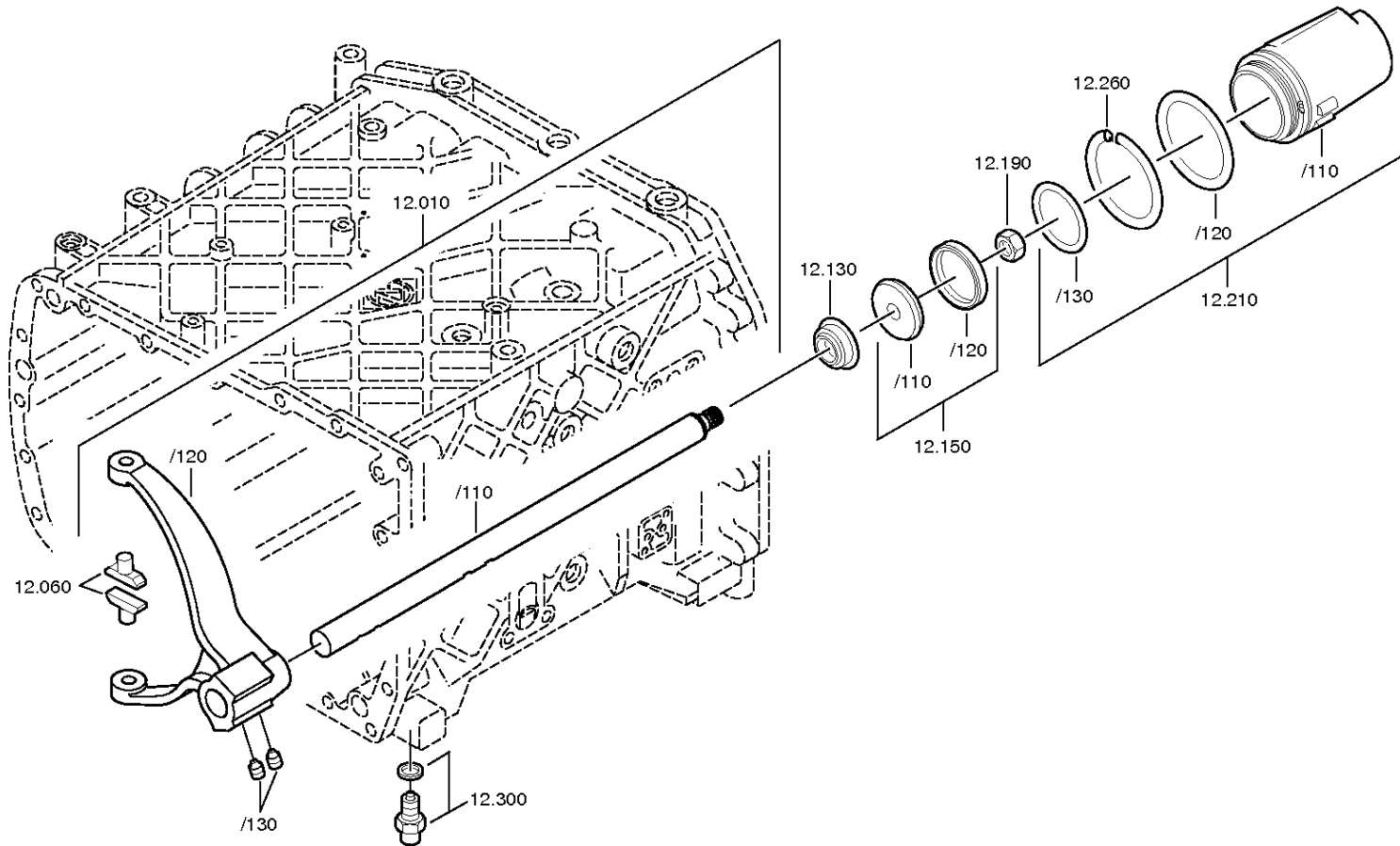


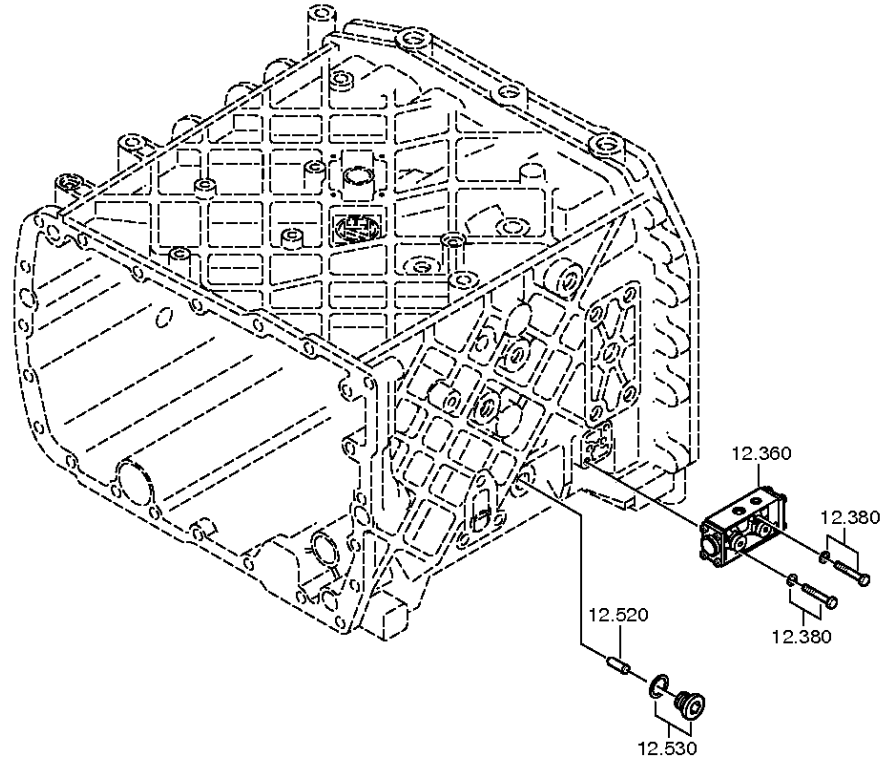
Plant

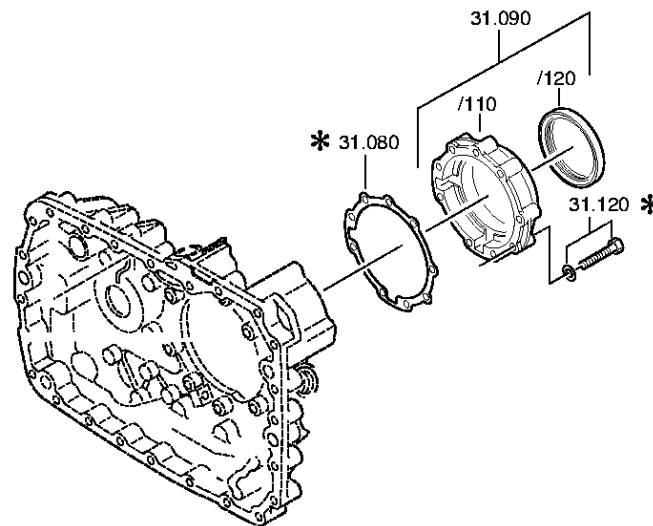
Page 1 from 2

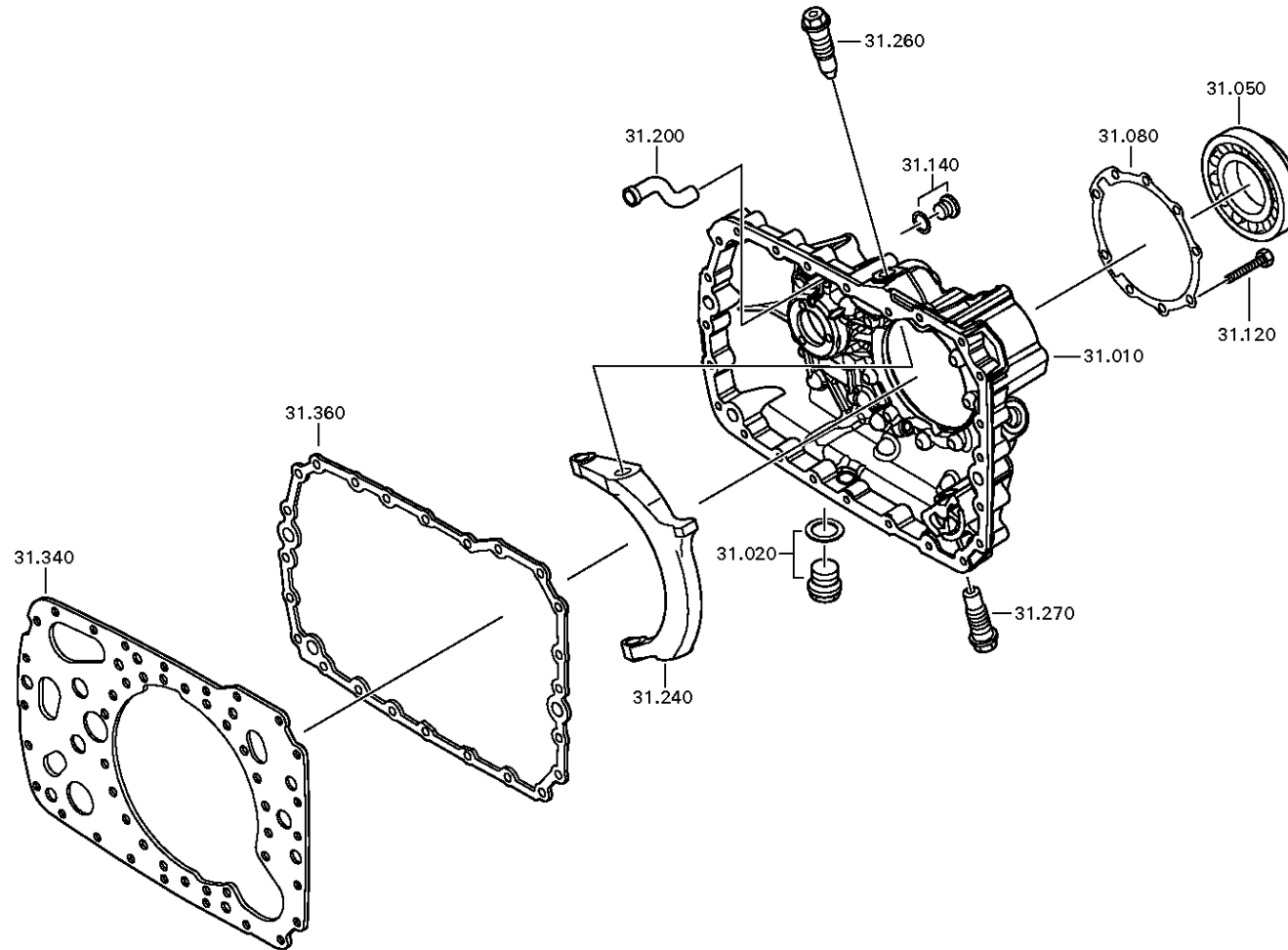
Material number: 1341.002.021
Plant: 068.40.04-1
GV-SHIFT SYSTEM

16 S 1820 TO / RENAULT TRUCKS
GV-SHIFT SYSTEM







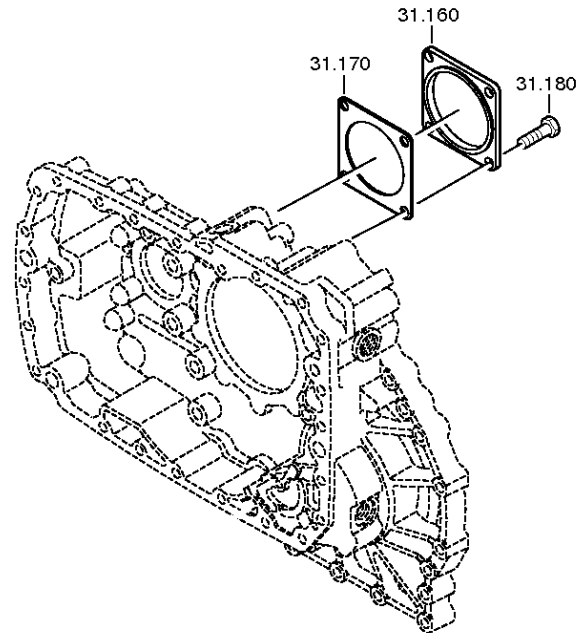


Plant

Page 3 from 5

Material number: 1341.002.021
Plant: 068.43.40-1
GP HOUSING

16 S 1820 TO / RENAULT TRUCKS
COVER

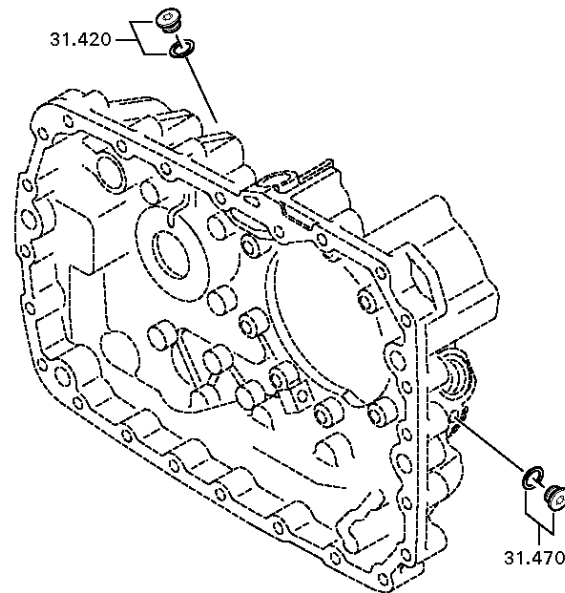


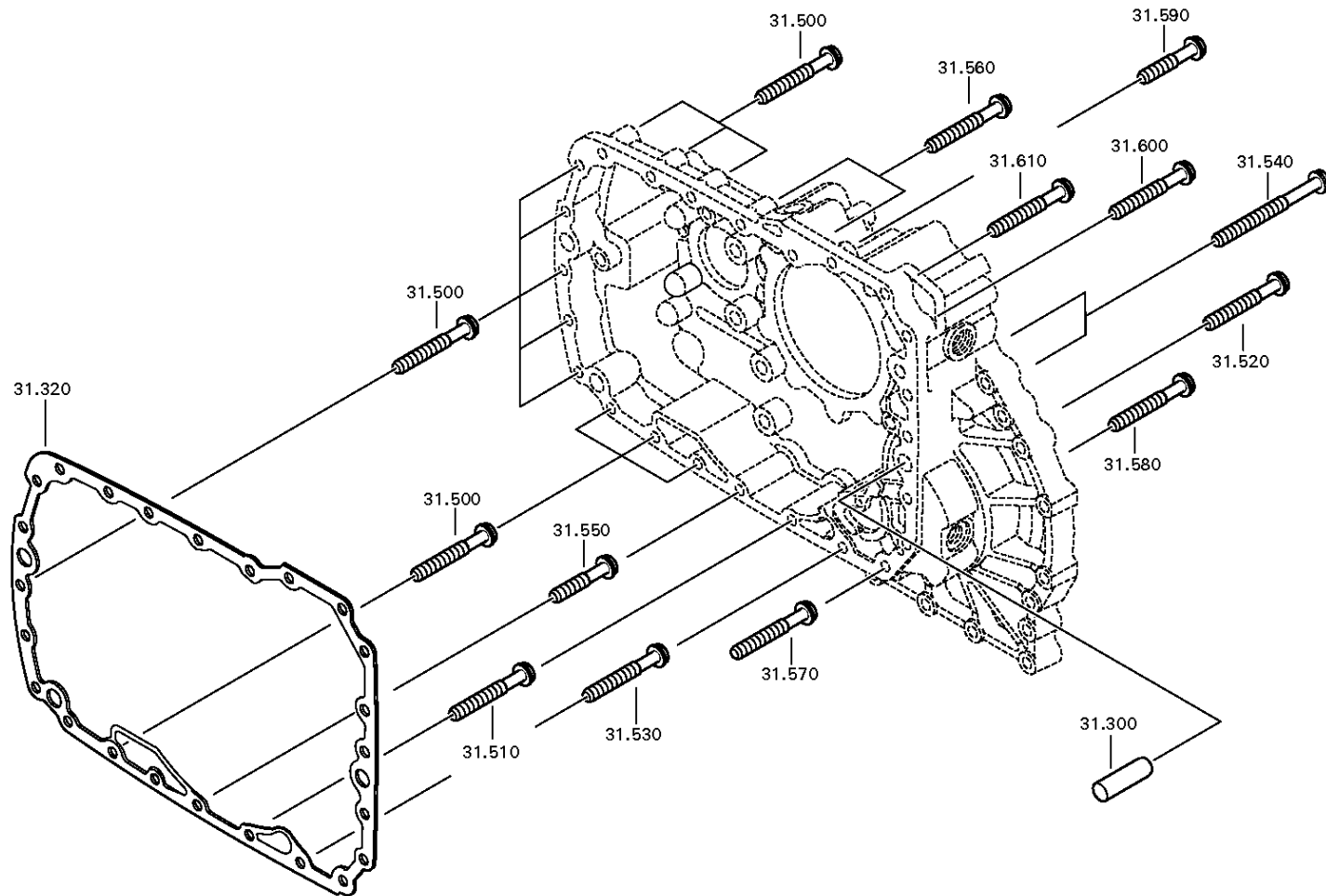
Plant

Page 4 from 5

Material number: 1341.002.021
Plant: 068.43.45-1
GP HOUSING

16 S 1820 TO / RENAULT TRUCKS
COVER



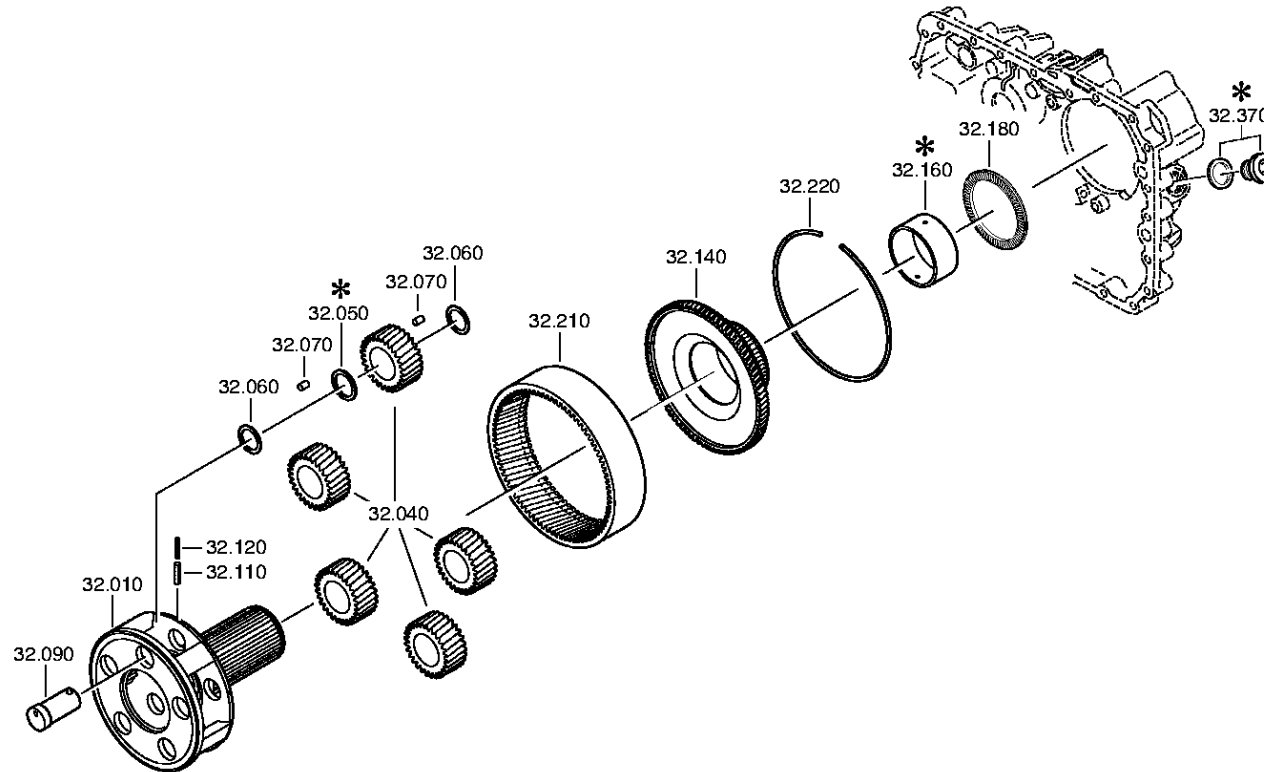


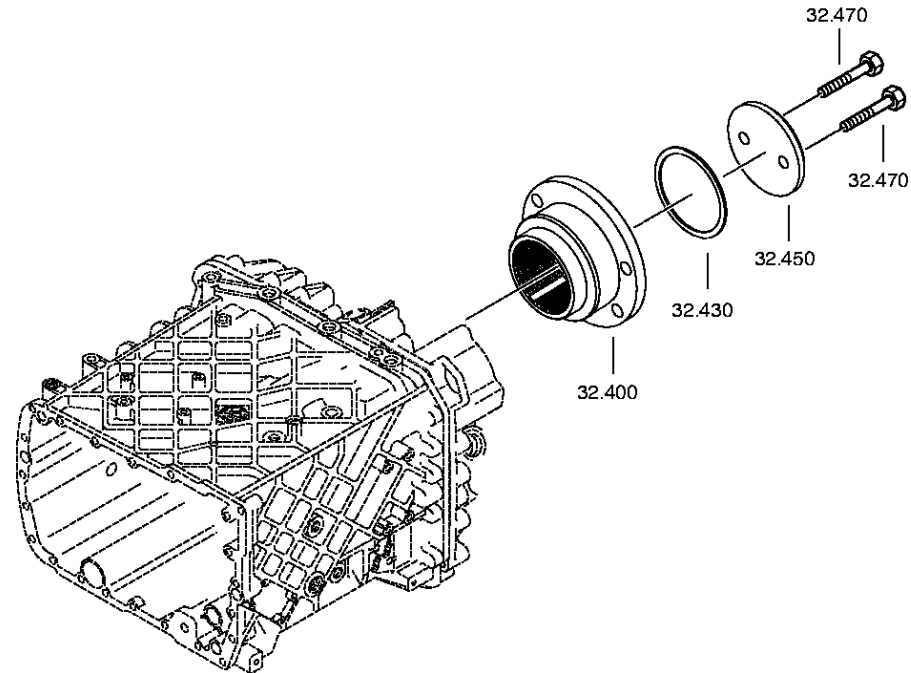
Plant

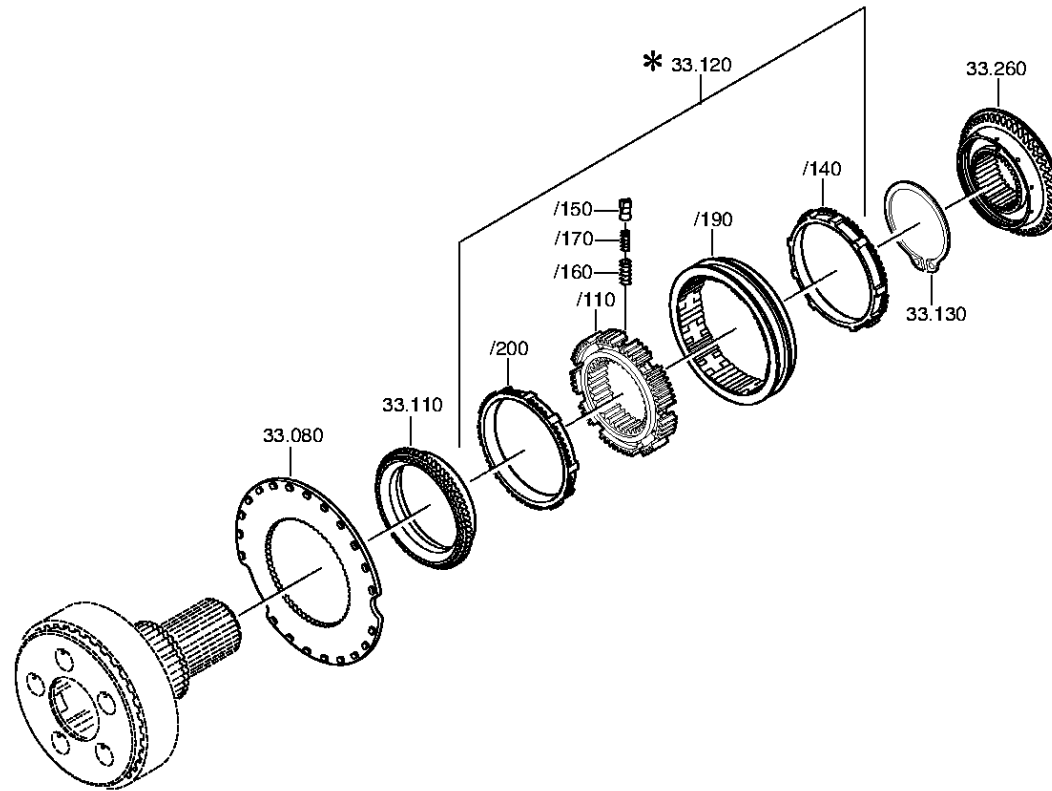
Page 1 from 2

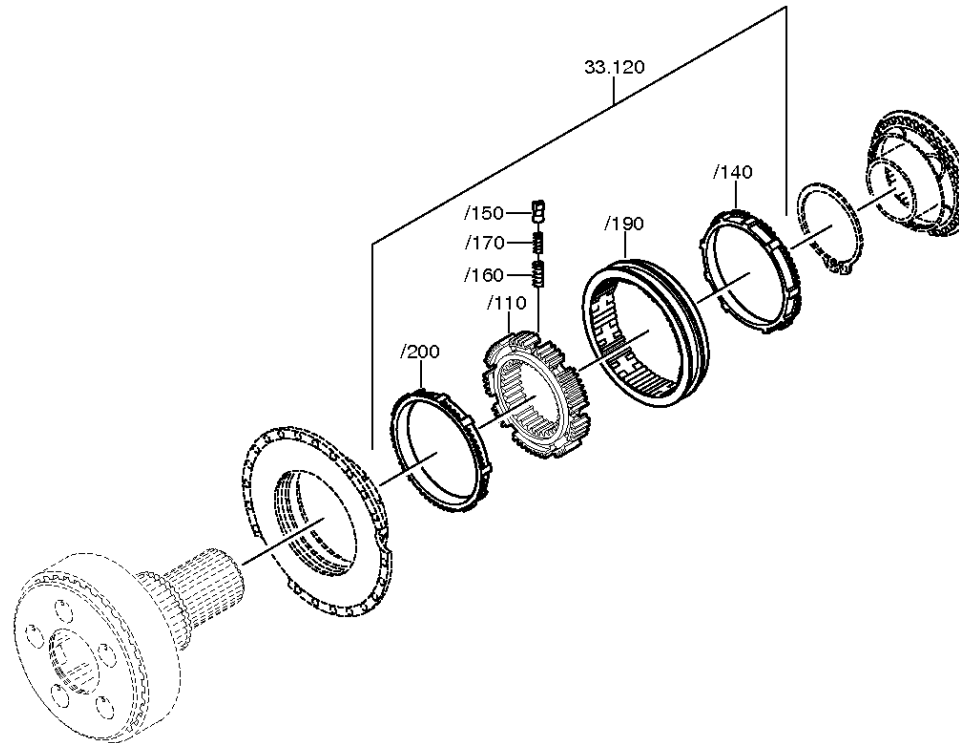
Material number: 1341.002.021
Plant: 068.44.07-1
PLANETARY DRIVE

16 S 1820 TO / RENAULT TRUCKS
PLANETARY DRIVE







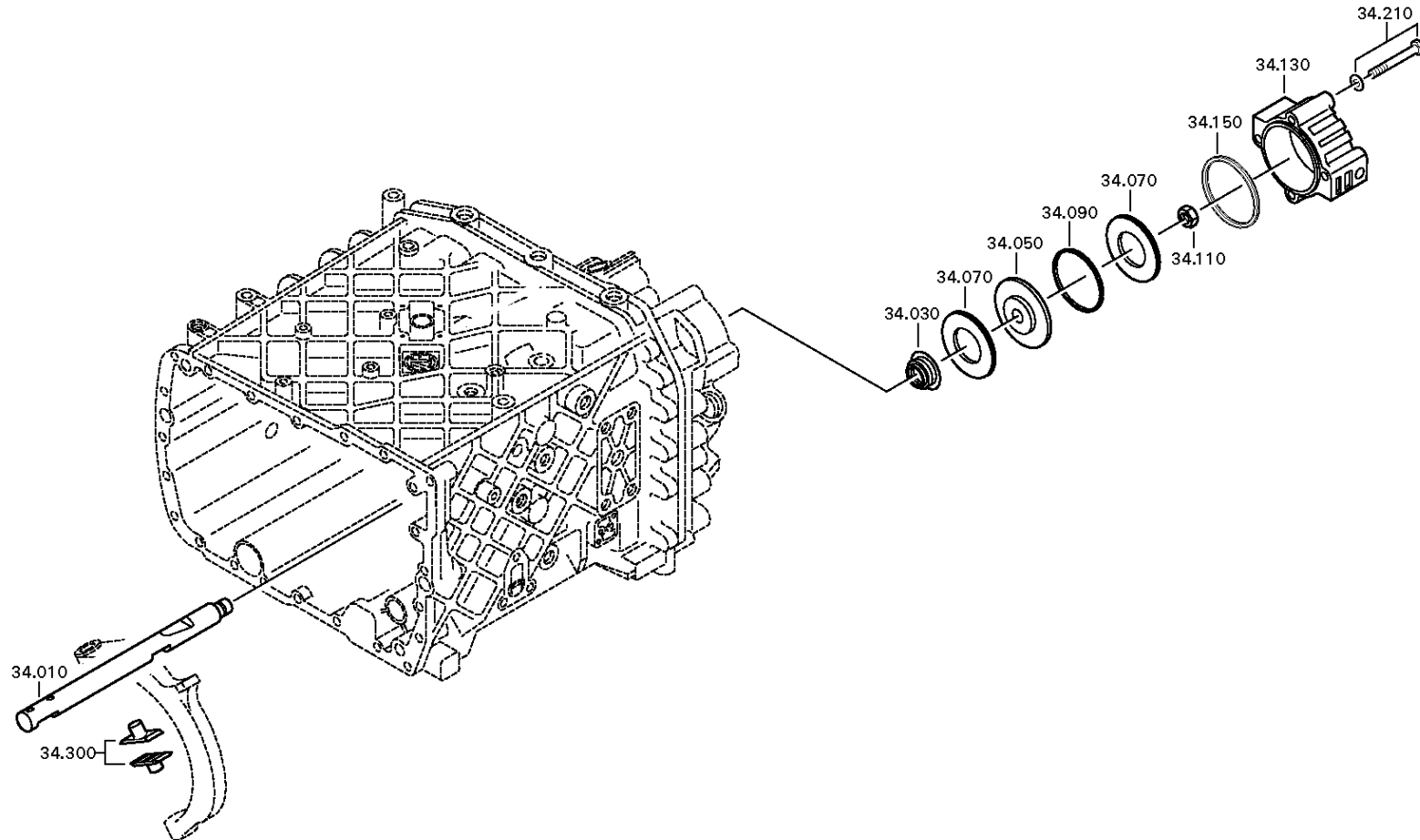


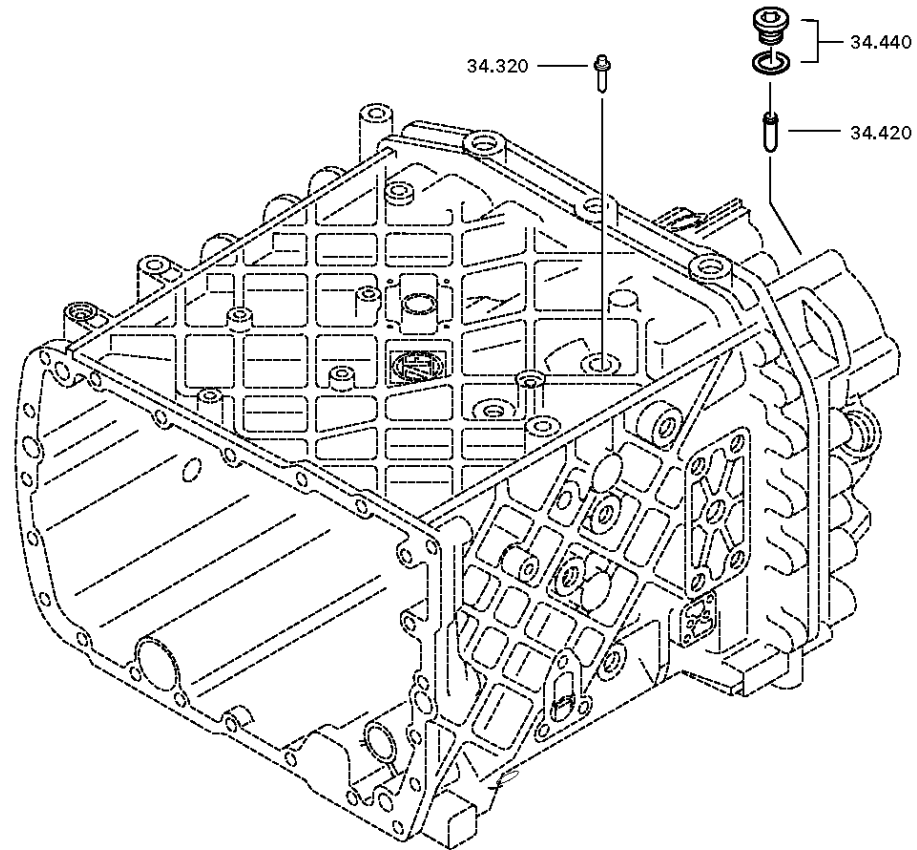
Plant

Page 1 from 2

Material number: 1341.002.021
Plant: 068.46.03-1
GP SHIFT SYSTEM

16 S 1820 TO / RENAULT TRUCKS
GP SHIFT SYSTEM





Plant

Page 1 from 1

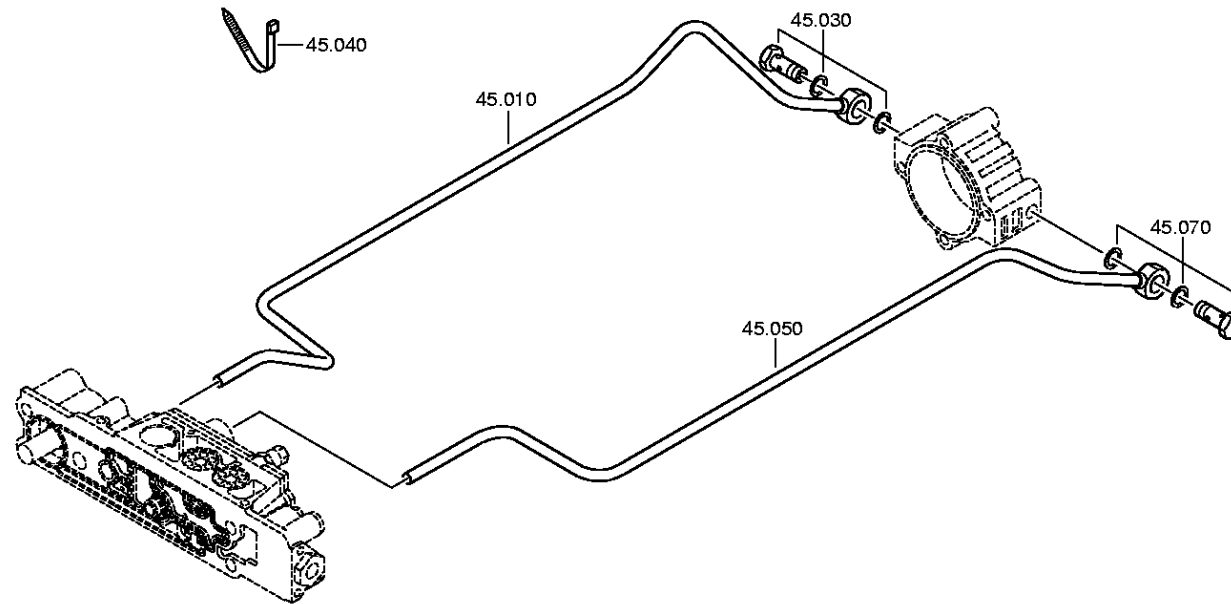
Material number: 1341.002.021

Plant: 068.57.15-1

Material-assembly-group-no: 1341.145.001

16 S 1820 TO / RENAULT TRUCKS

RANGE SELECTION



Plant

Page 1 from 1

Material number: 1341.002.021

Plant: 068.93.05-1

Material-assembly-group-no: 1315.168.016

16 S 1820 TO / RENAULT TRUCKS

CLUTCH RELEASE DEVICE

