



Spare Parts Catalog

6 S 1000 TO

Material number: 1346.002.089

Current date: 26.09.2018

ZF Friedrichshafen AG
Hauptverwaltung
80038 Friedrichshafen
Deutschland

Telefon: +49 7541 77-0

Telefax: +49 7541 77-908000

www.zf.com

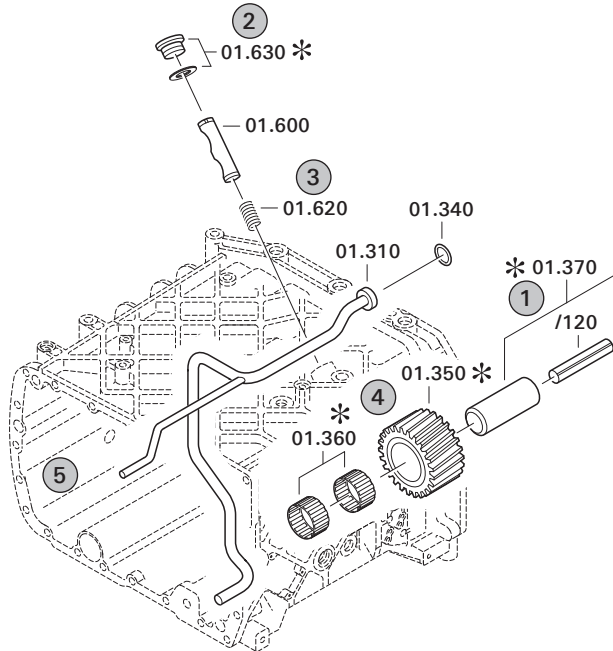
zuständiges Werk:
Friedrichshafen

Notes relating to the spare parts catalog

Setup of the spare parts catalog

- Cover sheet
- Technical Cover (only in SDM print)
- Overview of figures
- Figure
- Associated parts list
- Next figure
- Associated parts list
- ...

Figure and parts list



Overview of figures

Bildtafel Figure	Sachnummer Product number	Benennung (Description)	Technische Info Technical info	Description (Benennung)	Menge Quantity	Einheit Unit
068.08.17	1316.170.001	AUSLEGER	WL	SHIFT TURRET	1	Stk
068.08.06	1316.170.031	DECKEL	WL*H-H *VM	COVER	1	Stk
068.08.14	1316.170.808	DECKEL	WL*AUSL+GEH*H-H*HF160N	COVER	1	Stk
08	1316.170.441	ANSCHLUSSTEILE	WL*NG-VORB*RG-SCHL*168N *BAJONETT	CONNECTING PARTS	1	Stk

The "gap" indicates that there is no separate graphics panel (poster) for this assembly
The parts of this assembly are shown with the same mid-section number on the figure

1 Positions and subpositions

Pos.	Sachnummer Product number	Benennung (Description)	Technische Info Technical info	Description (Benennung)	Menge Quantity	Einheit Unit
0370	1315.201.054	RUECKLAUFBOLZEN	KPL.16S151*SG*L= 79	REV.IDLER SHAFT	1	Stk
/0120	0631.329.293	SPANNSTIFT		SLOT. PIN	1	Stk

Positions marked with "/" are the individual items of a completion
For example: Position 0370 contains a centering pin with the position /0120

2 Combinations with standardized parts

Pos.	Sachnummer Product number	Benennung (Description)	Technische Info Technical info	Description (Benennung)	Menge Quantity	Einheit Unit
0630		VERSCHL.SCHR.		SCREW PLUG	1	Stk
	0636.302.067	VERSCHL.SCHR.		SCREW PLUG	1	Stk
	0634.801.249	DICHTRING	A 26 X 31	SEALING RING	1	Stk

The parts list shows the components included in the combination of standardized parts

3 Depiction of position/item number on the figure and in the parts list

01.620 - on the figure 01 relates to the assembly in which the position is included. Due to program-related reasons, it is shown on the figure.

0620 - in the parts list

Pos.	Sachnummer Product number	Benennung (Description)	Technische Info Technical info	Description (Benennung)	Menge Quantity	Einheit Unit
0620	0732.040.736	DRUCKFEDER		COMPRESSION SPRING	1	Stk

4 *-Positions

Positions marked with an * are optional i.e. inclusion in the parts list is not mandatory.
The following note is shown on the figure

je nach Stücklistenausführung
depending on spec. number
*
suivant la nomenclature
secondo la distinta base

5 Parts, dotted display

Parts with dotted display on the figure are only used for orientation of other parts

Technical Cover

Page 1 from 4

Material number: 1346.002.089



6 S 1000 TO /

Pos.	Information	Amendment number
001	Use case -----	
002	Customer KAMAZ PUBLIC JOINT STOCK COMPANY	
003	City Naberezhnye Chelny	
004	DUNS 64-493-2113	
005	Vehicle / Apparatus -----	
006	Sales Name KAMAZ-4308	
007	Manufacturer KAMAZ PUBLIC JOINT STOCK COMPANY	
008	Engineering Name	
009	Product Use TRUCK	
010	Vehicle/Hardware Type ROAD TRACTOR	
011	SOP	
012	Engine	
013	Sales Designation	
014	Manufacturer Cummins Engine Co.	
015	Eng.Displ.	
016	Cylinder	
017	Nom. power 136 kW	
018	RPM at nom. power 2500 1/min	
019	Nom. torque 700 Nm	
020	RPM at nom. torque 1500 1/min	
021	Classification use case -----	
022	APPROVAL NOTE 1 FIRST FITTING CHECK CARR.OUT	
024	DESIGNATION, CLUTCH MF395	
025	MANUFACTURER, CLUTCH ZF-SACHS	
026	TOTAL NUMBER OF WHEELS 4	
027	NUMBER OF DRIVING WHEELS 4	
028	DYNAMIC TYRE RADIUS 407 mm	
029	REAR AXLE RATIO 4.78	
033	PERMISS.GROSS VEHICLE WEIGHT 11 t	
034	PERMISS.GROSS COMBIN.WEIGHT 19 t	
035	Product description -----	
036	INSTALLATION POS TRANSMISSION HORIZONTAL LEFT	
037	TRANSMISSION ATTACHMENT FLANGE-MOUNTED	



Pos.	Information	Amendment number
038	CO2-FAMILY XXX	
039	CO2-CERTIFICATE XXX	
040	RATIO, BOTTOM GEAR 6.75	
041	RATIO, TOP GEAR .78	
042	SET OF RATIOS SG	
043	RATIO, 1ST GEAR 6.75	
044	RATIO, 2ND GEAR 3.6	
045	RATIO, 3RD GEAR 2.13	
046	RATIO, 4TH GEAR 1.39	
047	RATIO, 5TH GEAR 1	
048	RATIO, 6TH GEAR .78	
049	RATIO, 1ST GEAR REVERSE 6.06	
050	DESIGN, SHIFT SYSTEM TURNING SHAFT	
051	POSITION, GEAR SHIFT SYSTEM HORIZONTAL LEFT	
055	SELECTION PATTERN VARIANT GEAR SHIFT PATTERN 1	
056	REFERENCE LENGTH INPUT SHAFT 107 mm	
057	STANDARD TYPE INPUT SHAFT SAE	
058	NUMBER OF WEDGES INPUT SHAFT 10	
059	VERSION OF INPUT SHAFT FORM C	
060	NOMINAL DIAMETER INPUT SHAFT 1.75 in	
061	DIAMETER, JOURNAL, INPUT SHAFT 25 mm	
062	TYPE FIT SPIGOTS INPUT SHAFT F7	
063	DIAMETER SHAFT OF INPUT SHAFT 44 mm	
067	DESIGN,CONN., CLUTCH HOUSING SAE 2	
068	VERSION OF CLUTCH HOUSING INTEGRATED	
070	WRENCH SIZE, RELEASE FORK 75 mm	
072	ASSEMBLY POS. CLUTCH CYLINDER 6	
074	LENGTH TAPPET CLUTCH CYLINDER 112 mm	
075	DESIGN RELEASE BEARING WITHOUT GROOVE	
078	REF.LENGTH,RELEASE BEAR.FLAN 15 mm	
079	DIAMETER, RELEASE FLANGE 57 mm	
080	OUTER DIA. OUTPUT FLANGE RA 150.000 mm	
081	NUMBERS OF BORES OUTPUT FL. RA 4	



Pos.	Information	Amendment number
082	BORE DIA. OUTPUT FLANGE RA 13 mm	
088	REF. LENGTH OUTPUT FLANGE RA 709 mm	
089	DIMENSION SHIFT TURRET DIST. 245 mm	
090	MEAS. LOC. SHIFT TURRET DIST. SHIFT LEVER OUTSIDE EDGE	
095	RADIUS 1 SHIFT LEVER 65 mm	
096	DESIGN, OFFSET, SHIFT LEVER OUTSIDE	
098	LEVER POSITION SHIFTING OUTPUT C	
105	SPRING ARRANGEMENT Q1	
106	TOOLING SET OF SPRINGS W018	
108	SPRING FORCE DETENT PLUNGER RG 80 N	
109	SPRING FORCE MULTI STOP RG 76 N	
110	SWITCH, REVERSE GEAR y	
111	DESIGN, RG (REV.GEAR) SWITCH CLOSING	
112	DESIGN, CONNECTION, RG SWITCH DIN BAYONET	
113	PROT.CAP SWITCH, REVERSE GEAR y	
120	SWITCH, NEUTRAL GEAR y	
121	DESIGN,NG(NEUTRAL GEAR)SWITCH OPENING SWITCH	
122	DESIGN, CONNECTION, NG SWITCH DIN BAYONET	
123	PROT.CAP SWITCH, NEUTRAL GEAR y	
129	VER. TRANSMISSION VENTILATION BREATHER	
131	VERSION PULSE SENSOR SFA H68 WITH	
132	NO. PULSES PULSE SENSOR SFAH68 6 IMP/U	
133	PROT.CAP PULSE SENSOR SFA H68 y	
134	DESIGN CONN.PULSE SENSOR SFA H68 DIN BAYONET	
135	DESIGN PULSE SENSOR H68 KITAS II	
137	OIL CAPACITY, GEARBOX 9.3 dm3	
138	OIL FILL VARIANT EX WORKS	
139	OIL GRADE PERMISSIBLE ACC. TO TE-ML02	
140	COLOR JET BLACK	
141	COLOUR CLASSIFICATION ACC. TO RAL 9005	
142	PAINTING, ZF STANDARD 915 W	
143	CODING OUTER CONSERVATION KA1	
144	SCOPE OUTER CONSERVATION T	

Technical Cover

Page 4 from 4

Material number: 1346.002.089



6 S 1000 TO /

Pos.	Information	Amendment number
145	CODING INNER CONSERVATION KI1	
146	CONSERVATION SPECIFICATION ZFN 916	

Assembly group overview

Page 1 from 1

Material number: 1346.002.089



6 S 1000 TO /

Graphics	Pos.	Material number	Name	Quantity	Amend. no.	Techn. Info.
150.01.08-1	110	1346.101.022	CLUTCH HOUSING	1		
150.01.50-1	112	1346.101.060	TYPE PLATE	1		
150.01.80-1	120	1346.101.800	OUTPUT HOUSING	1		
150.02.01-1	130	1346.102.008	INPUT SHAFT	1		
150.02.02-1	140	1346.102.007	GUIDE TUBE	1		
150.02.81-1	150	1346.102.803	GUIDE TUBE	1		
150.02.83-1	160	1346.102.808	INPUT SHAFT	1		
150.03.01-1	920	1346.103.001	COUNTERSHAFT	1		
150.04.80-1	210	1346.104.800	MAIN SHAFT	1		
150.04.01-1	910	1346.104.001	MAIN SHAFT	1		
150.05.01-1	220	1346.105.001	RETURN	1		
150.06.01-1	230	1346.106.007	SHIFT SYSTEM	1		
150.09.04-1	10	1346.109.006	GEAR SHIFT HOUSING	1		
150.10.01-1	270	1346.174.800	SHIFT TURRET	1		
150.18.01-1	300	1346.108.001	SPEEDOMETER COVER	1		
150.18.80-1	310	1346.108.800	SPEEDOMETER COVER	1		
150.50.06-1	90	1346.150.020	SET OF SPRINGS	1		
150.52.04-1	40	1346.152.002	LEVER	1		
150.55.03-1	30	1346.155.013	GEARSHIFT SHAFT	1		
150.58.01-1	100	1346.158.004	DETENT	1		
150.59.01-1	80	1346.159.042	SWITCH	1		
150.93.42-1	330	6060.168.009	CLUTCH RELEASE DEVICE	1		

Plant

Page 1 from 3

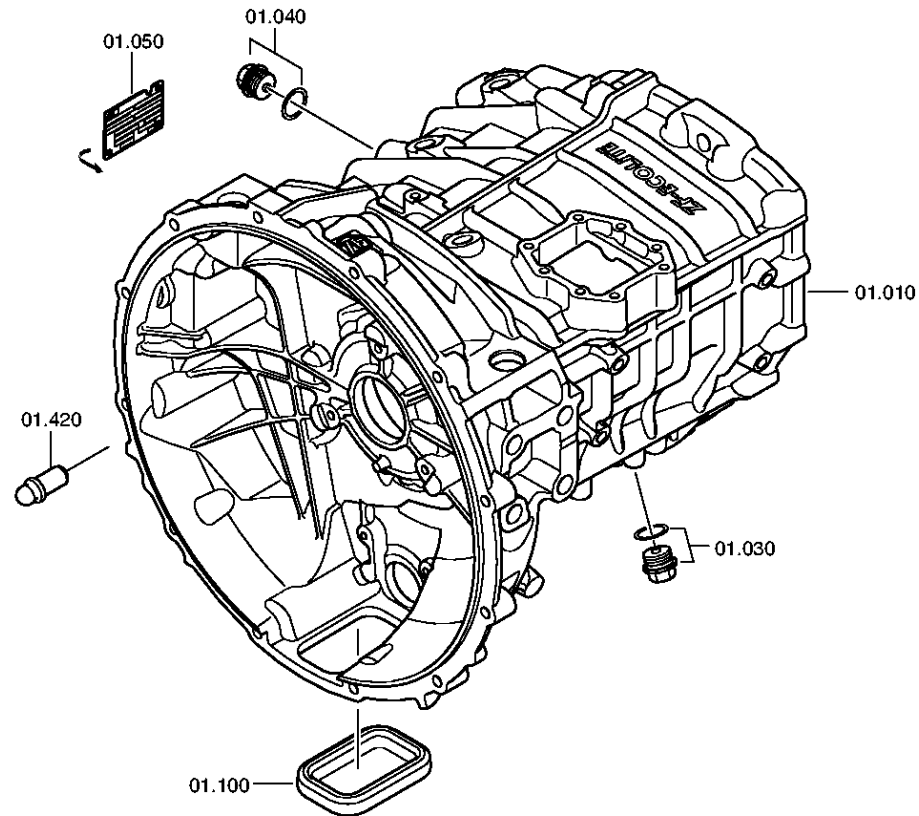
Material number: 1346.002.089

Plant: 150.01.08-1

CLUTCH HOUSING



6 S 1000 TO /
CLUTCH HOUSING



Plant

Page 2 from 3

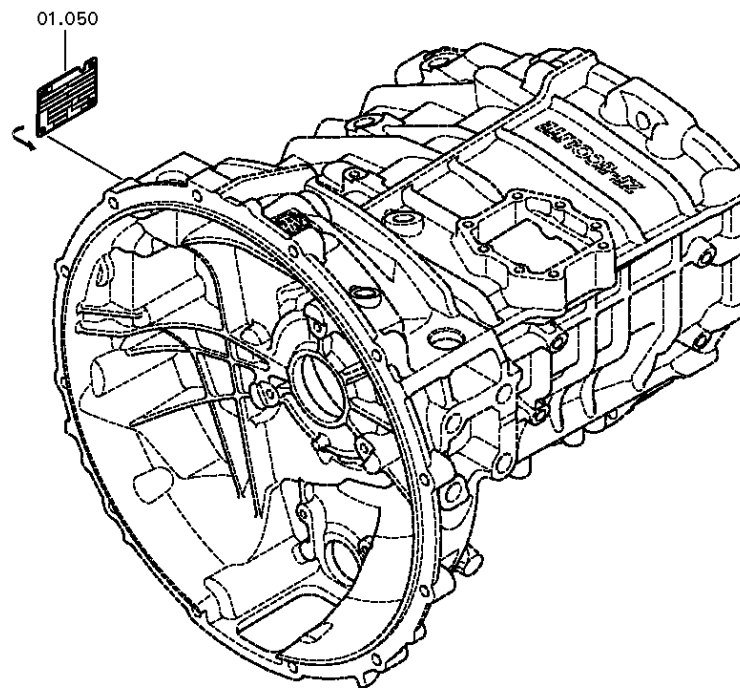
Material number: 1346.002.089

Plant: 150.01.50-1

CLUTCH HOUSING



6 S 1000 TO /
CLUTCH HOUSING



Plant

Page 3 from 3

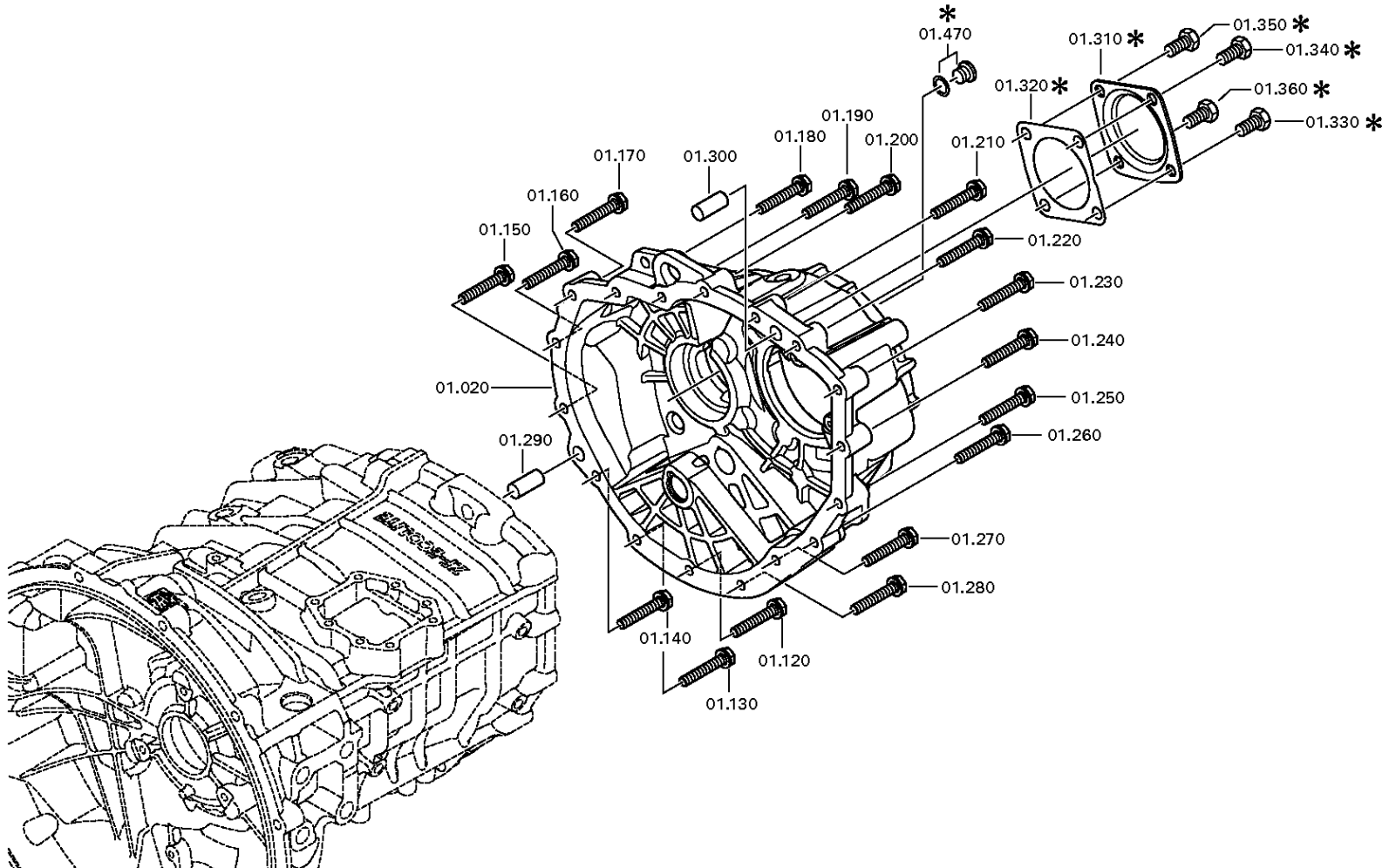
Material number: 1346.002.089

Plant: 150.01.80-1

CLUTCH HOUSING



6 S 1000 TO /
CLUTCH HOUSING



Plant

Page 1 from 4

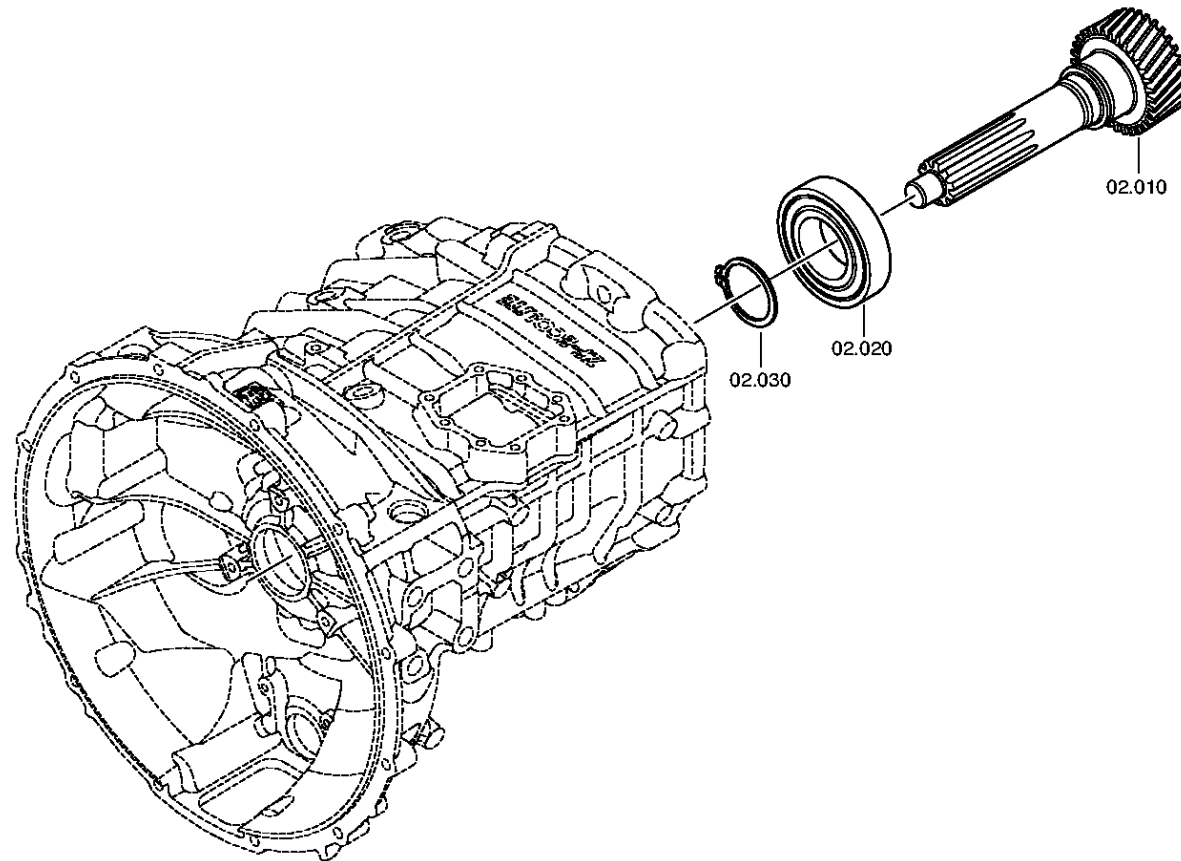
Material number: 1346.002.089

Plant: 150.02.01-1

INPUT SHAFT



6 S 1000 TO /
INPUT SHAFT



Plant

Page 2 from 4

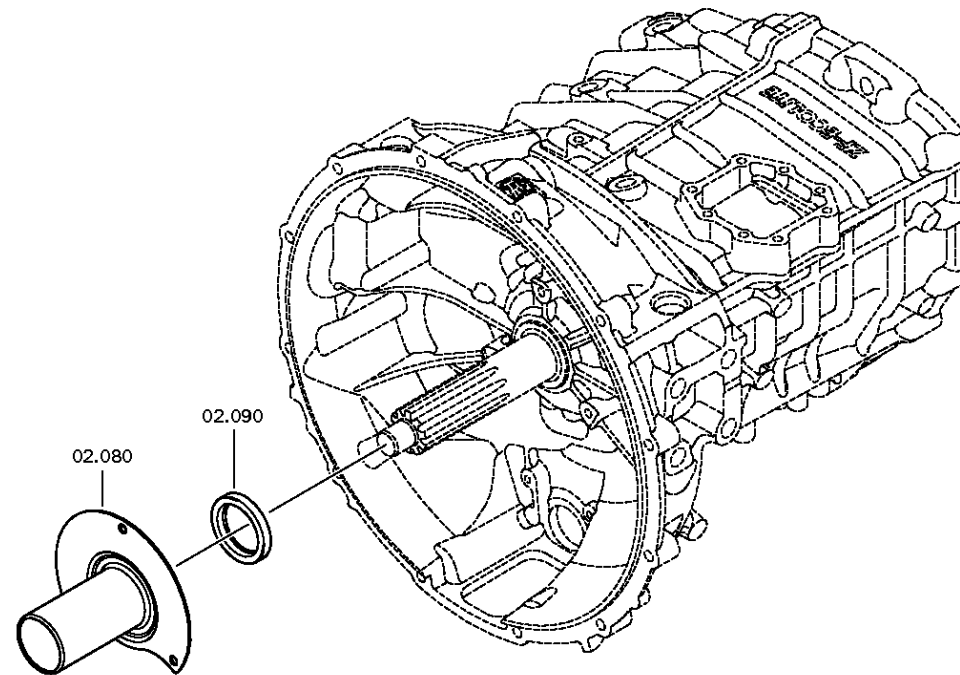
Material number: 1346.002.089

Plant: 150.02.02-1

INPUT SHAFT



6 S 1000 TO /
INPUT SHAFT



Plant

Page 3 from 4

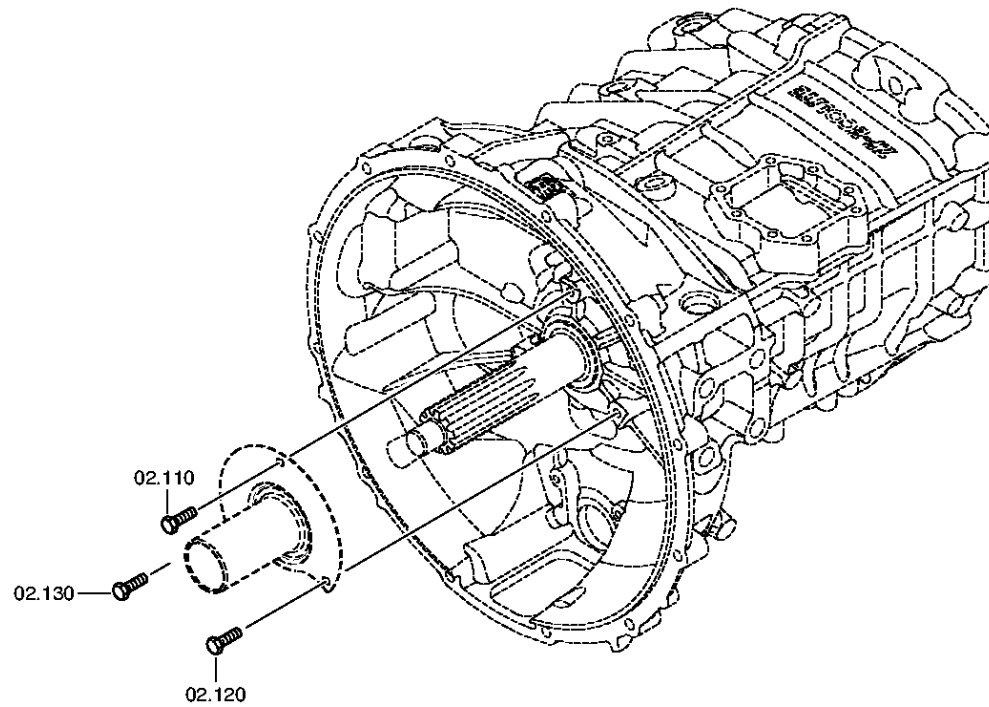
Material number: 1346.002.089

Plant: 150.02.81-1

INPUT SHAFT



6 S 1000 TO /
INPUT SHAFT



Plant

Page 4 from 4

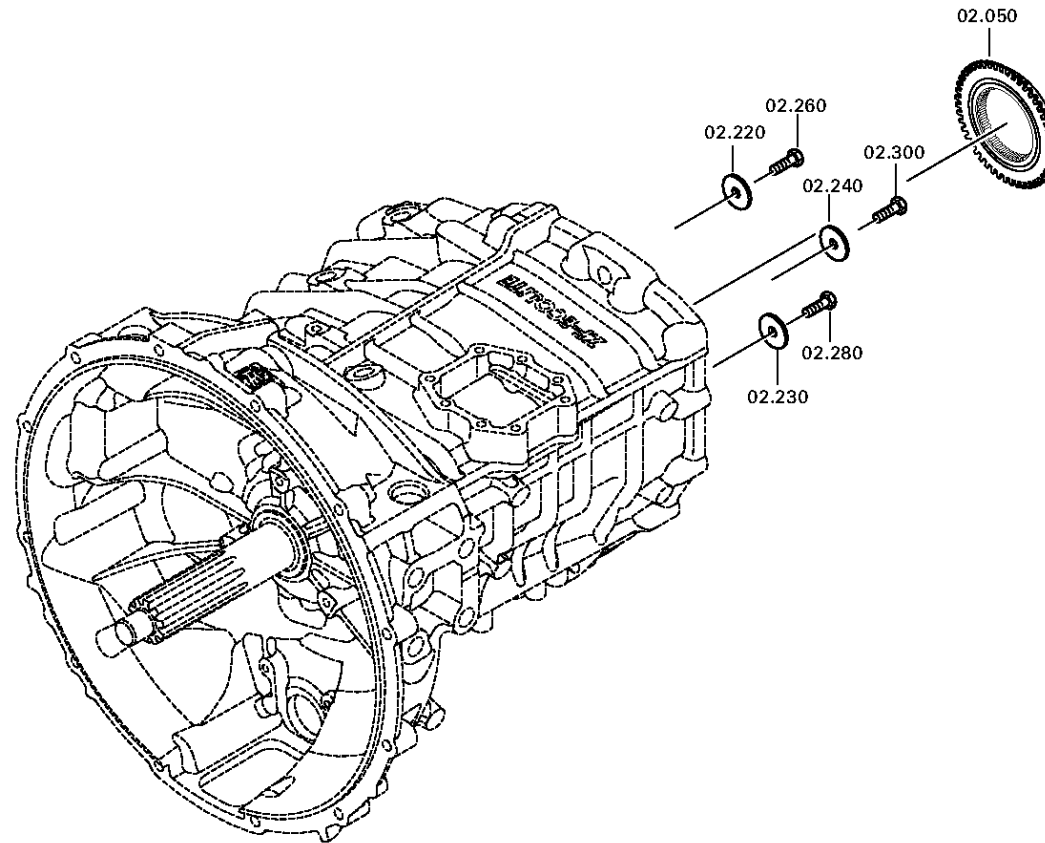
Material number: 1346.002.089

Plant: 150.02.83-1

INPUT SHAFT



6 S 1000 TO /
INPUT SHAFT



Plant

Page 1 from 1

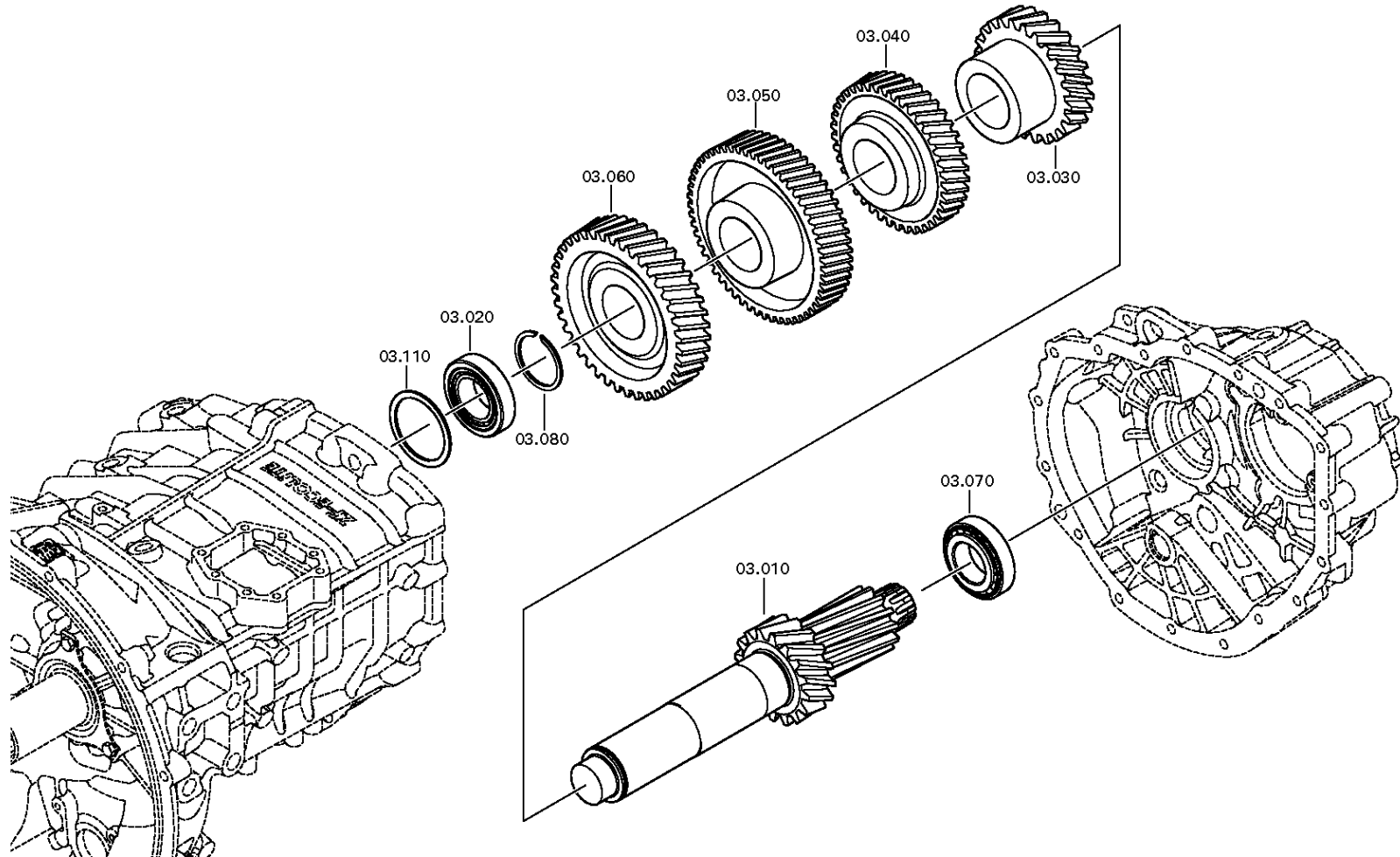
Material number: 1346.002.089

Plant: 150.03.01-1

Material-assembly-group-no: 1346.103.001



6 S 1000 TO /
COUNTERSHAFT



Plant

Page 1 from 3

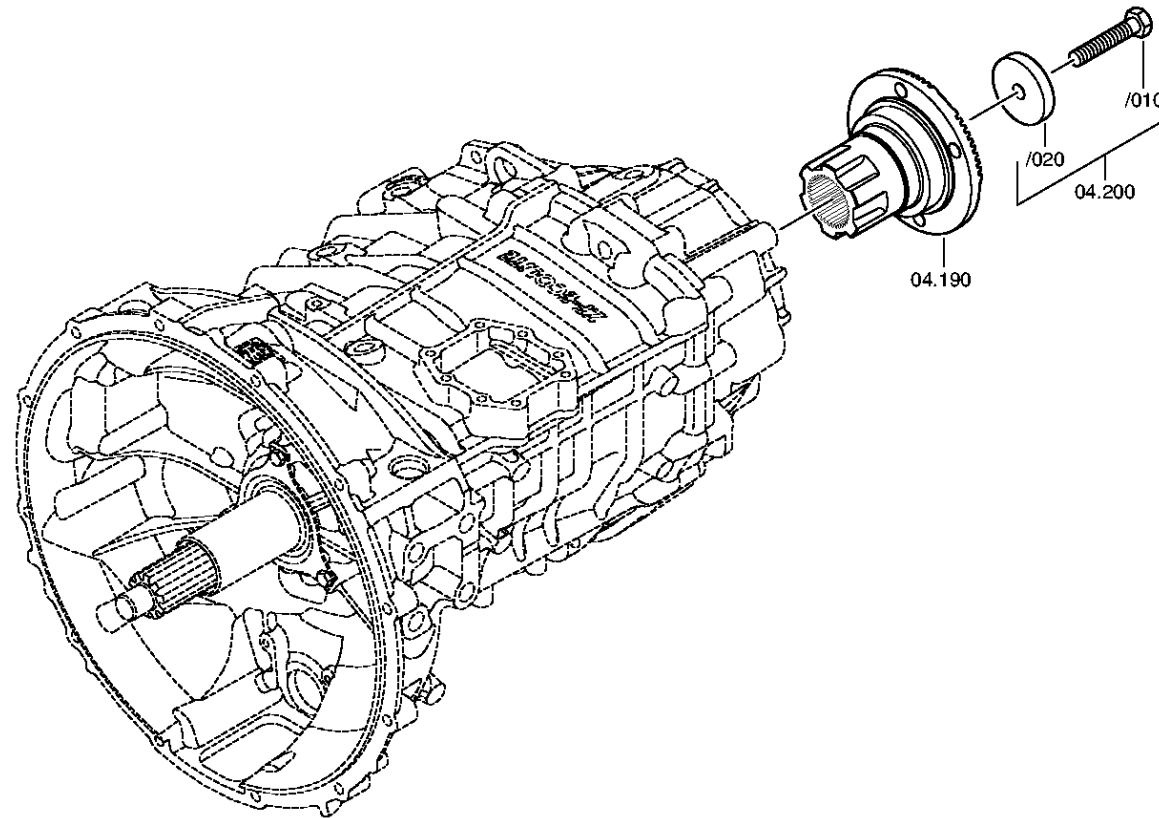
Material number: 1346.002.089

Plant: 150.04.80-1

MAIN SHAFT



6 S 1000 TO /
MAIN SHAFT



Plant

Page 2 from 3

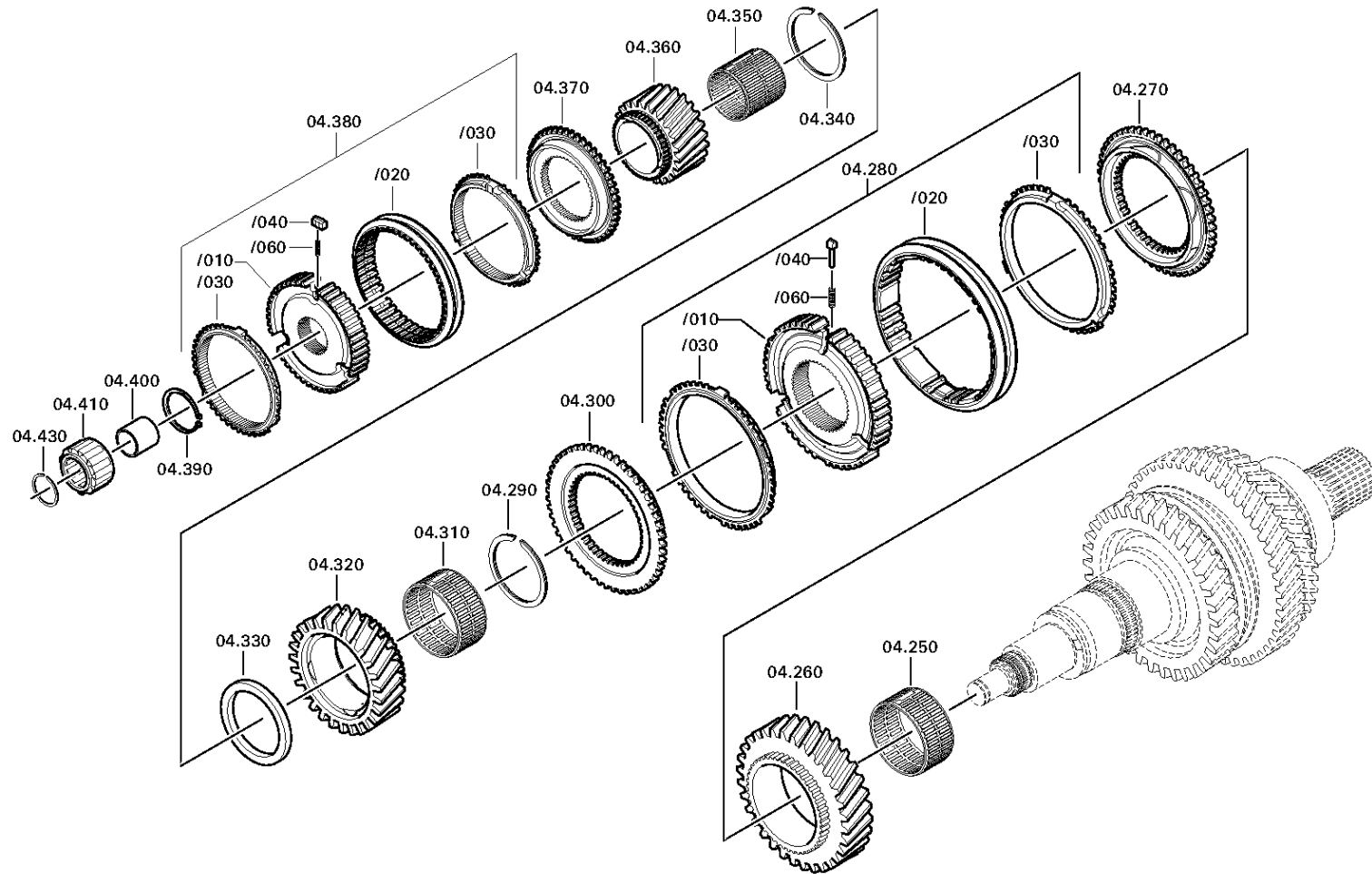
Material number: 1346.002.089

Plant: 150.04.01-1

MAIN SHAFT



6 S 1000 TO /
MAIN SHAFT



Plant

Page 3 from 3

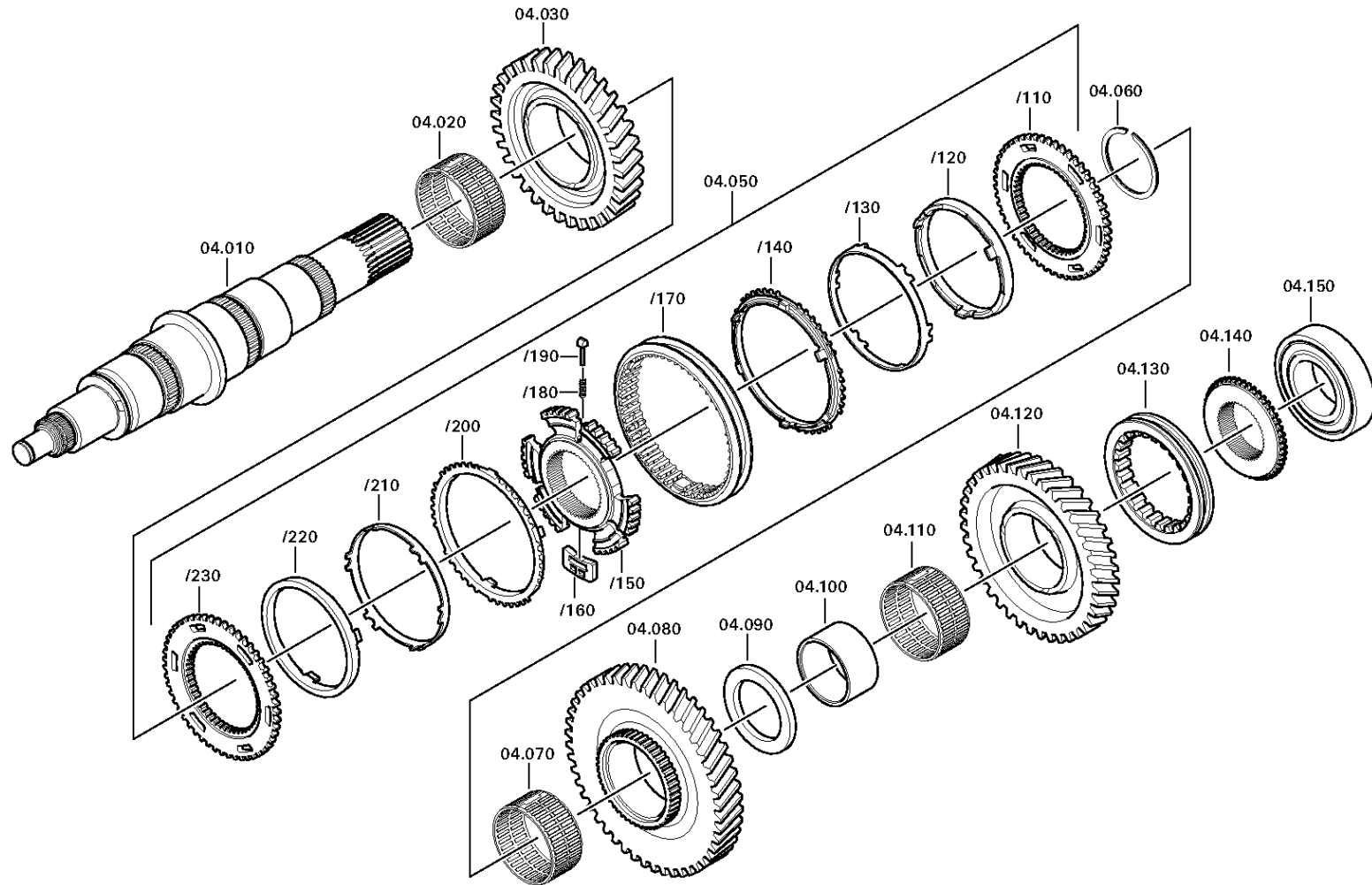
Material number: 1346.002.089

Plant: 150.04.01-2

MAIN SHAFT



6 S 1000 TO /
MAIN SHAFT



Plant

Page 1 from 1

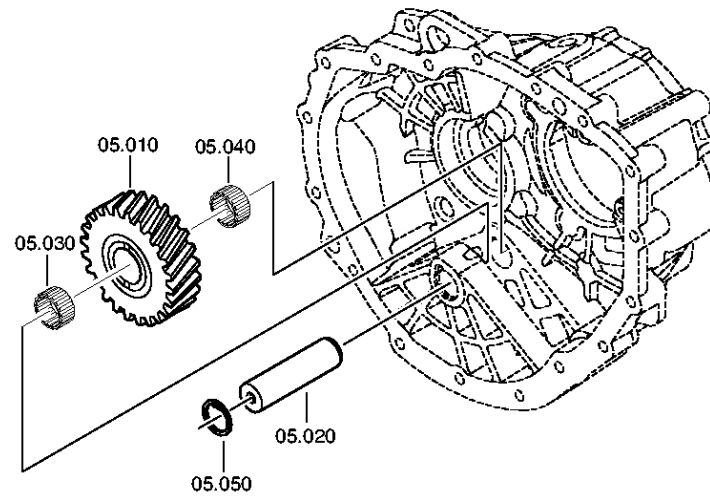
Material number: 1346.002.089

Plant: 150.05.01-1

Material-assembly-group-no: 1346.105.001



6 S 1000 TO /
RETURN



Plant

Page 1 from 1

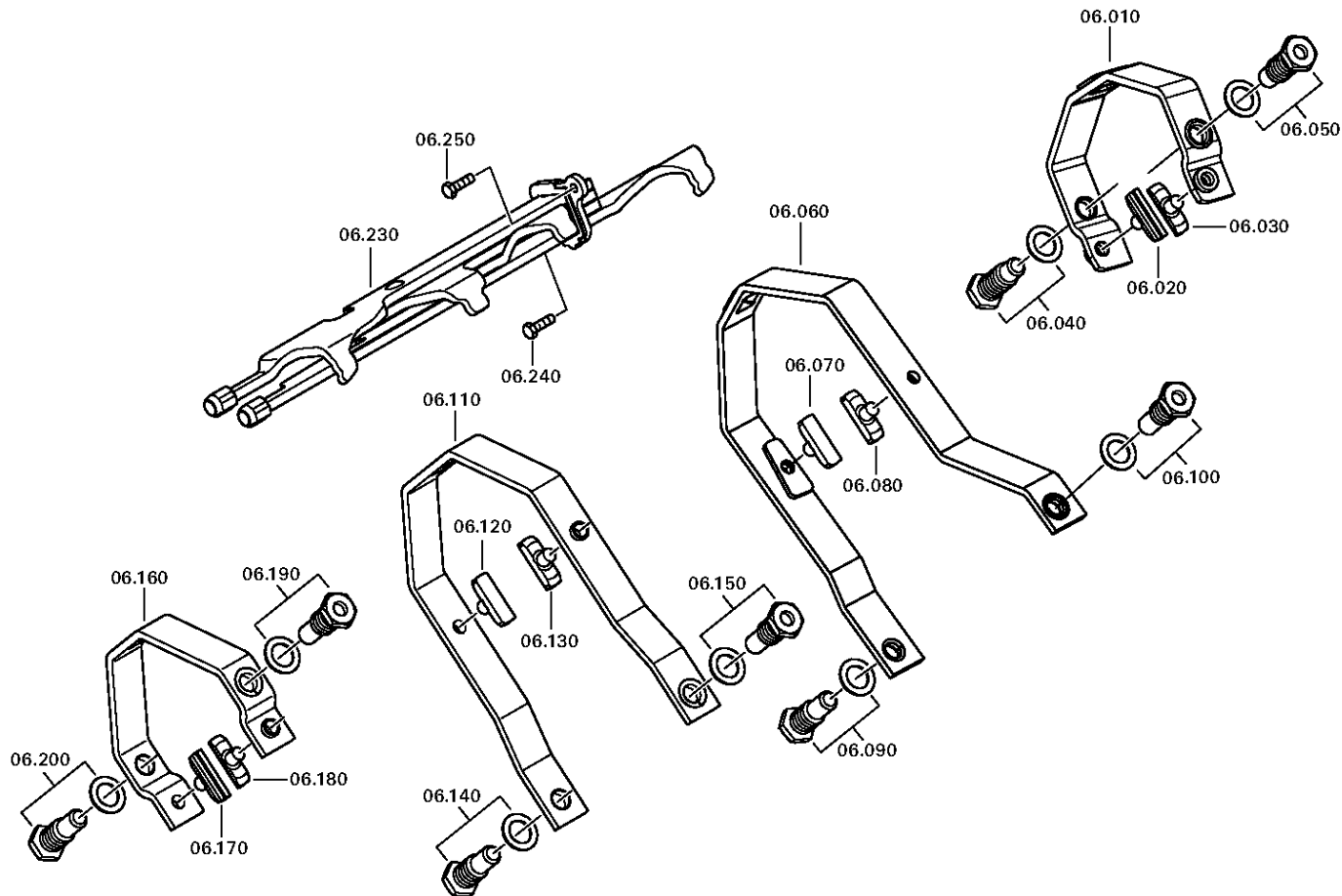
Material number: 1346.002.089

Plant: 150.06.01-1

Material-assembly-group-no: 1346.106.007



6 S 1000 TO /
SHIFT SYSTEM



Plant

Page 1 from 1

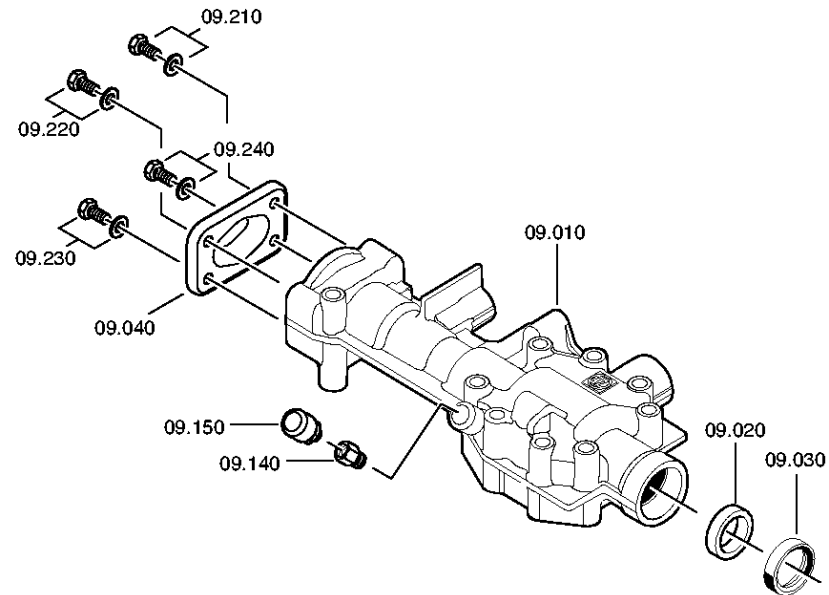
Material number: 1346.002.089

Plant: 150.09.04-1

Material-assembly-group-no: 1346.109.006



6 S 1000 TO /
GEAR SHIFT HOUSING



Plant

Page 1 from 1

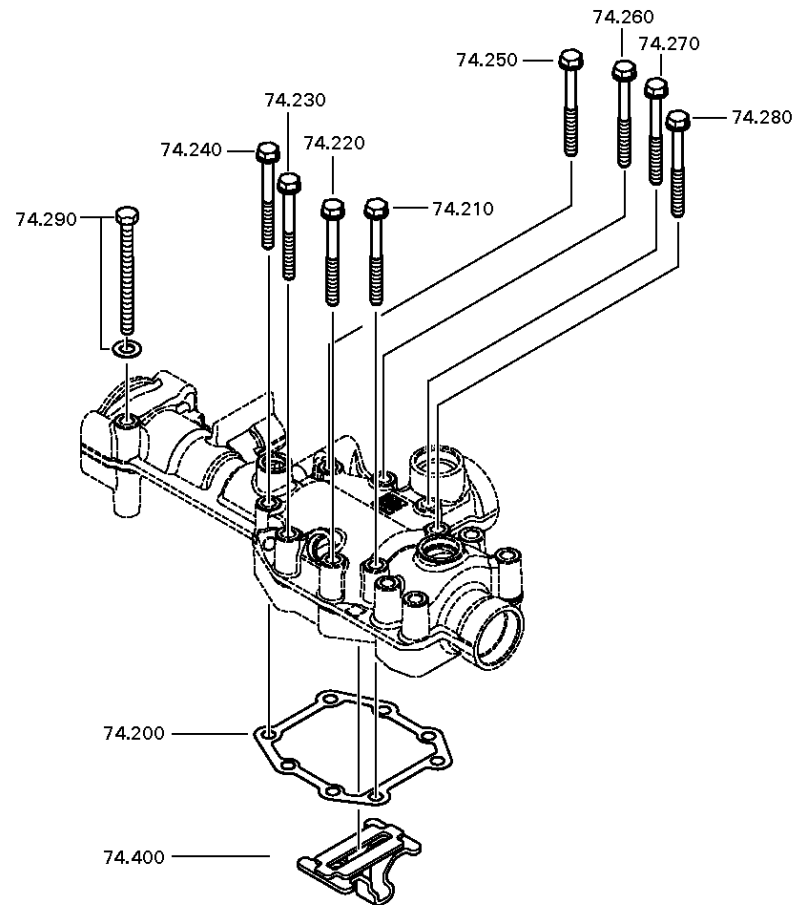
Material number: 1346.002.089

Plant: 150.10.01-1

Material-assembly-group-no: 1346.174.800



6 S 1000 TO /
SHIFT TURRET



Plant

Page 1 from 2

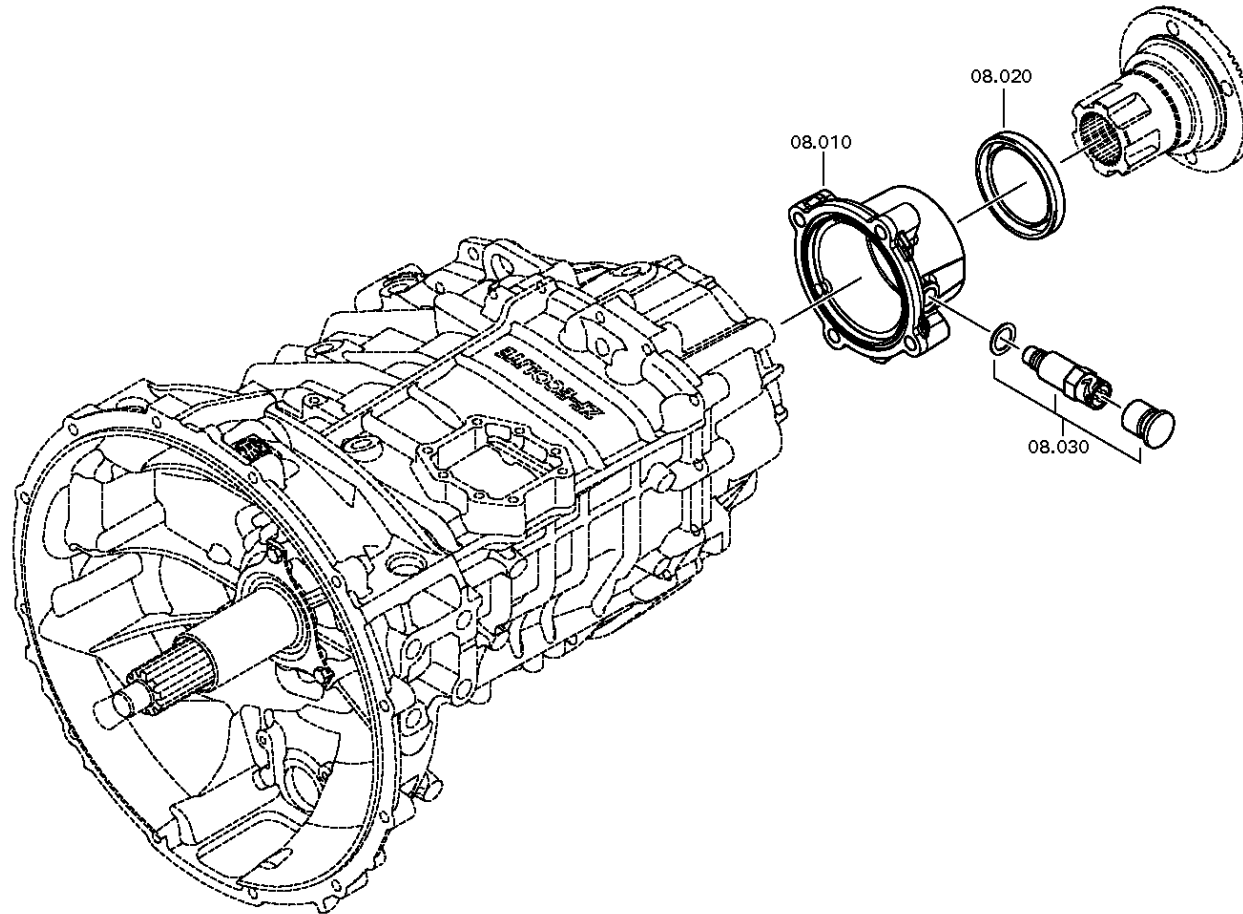
Material number: 1346.002.089

Plant: 150.18.01-1

SPEEDOMETER COVER



6 S 1000 TO /
SPEEDOMETER COVER



Plant

Page 2 from 2

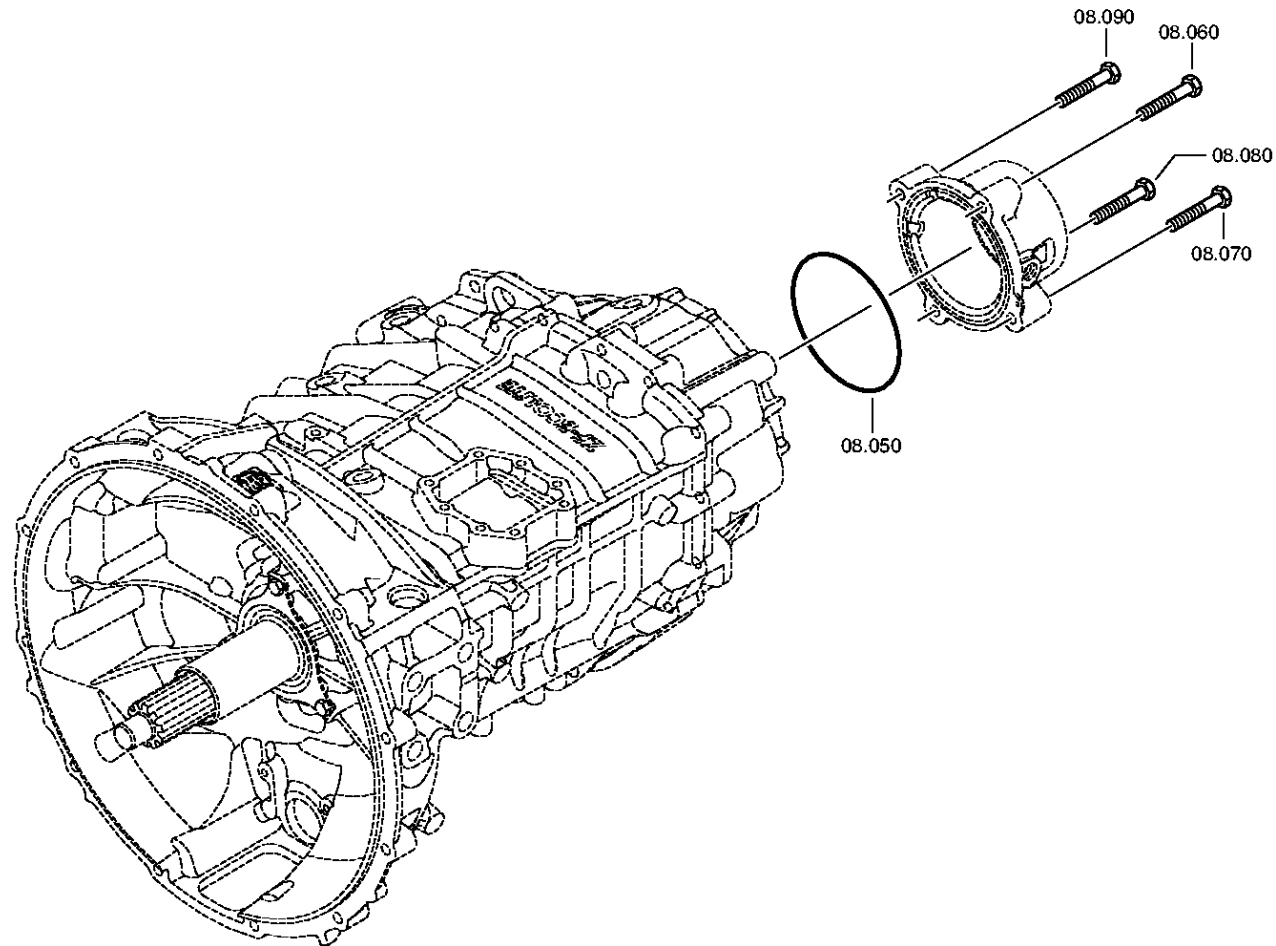
Material number: 1346.002.089

Plant: 150.18.80-1

SPEEDOMETER COVER



6 S 1000 TO /
SPEEDOMETER COVER



Plant

Page 1 from 1

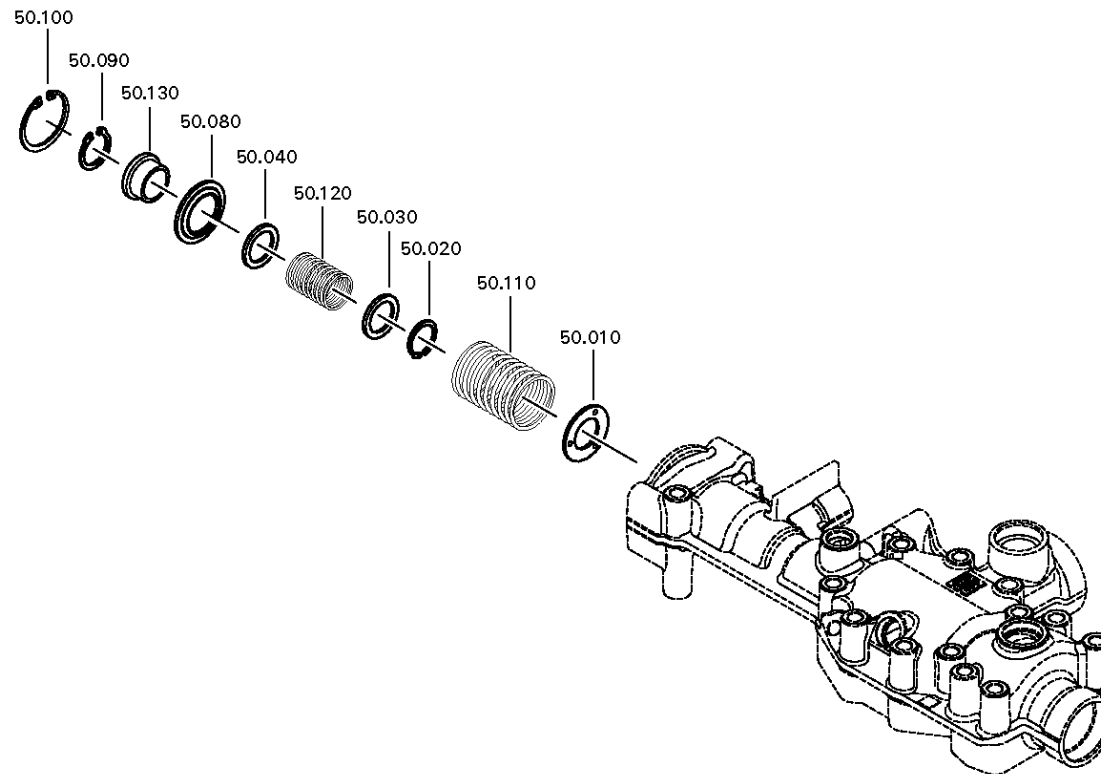
Material number: 1346.002.089

Plant: 150.50.06-1

Material-assembly-group-no: 1346.150.020



6 S 1000 TO /
SET OF SPRINGS



Plant

Page 1 from 1

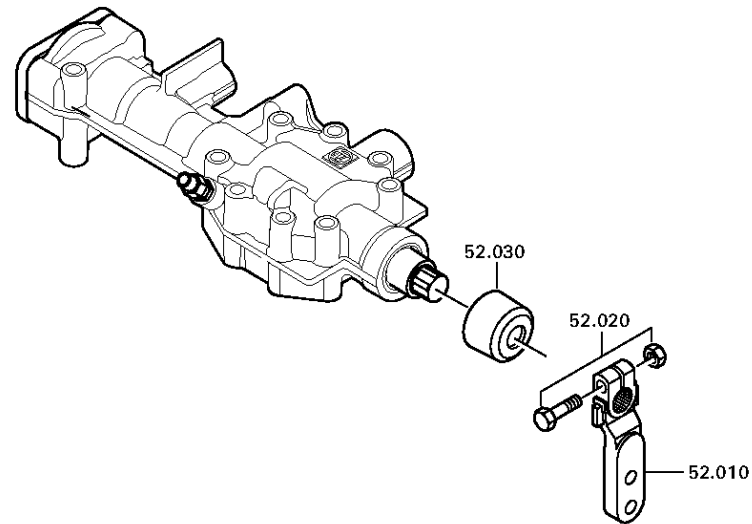
Material number: 1346.002.089

Plant: 150.52.04-1

Material-assembly-group-no: 1346.152.002



6 S 1000 TO /
LEVER



Plant

Page 1 from 1

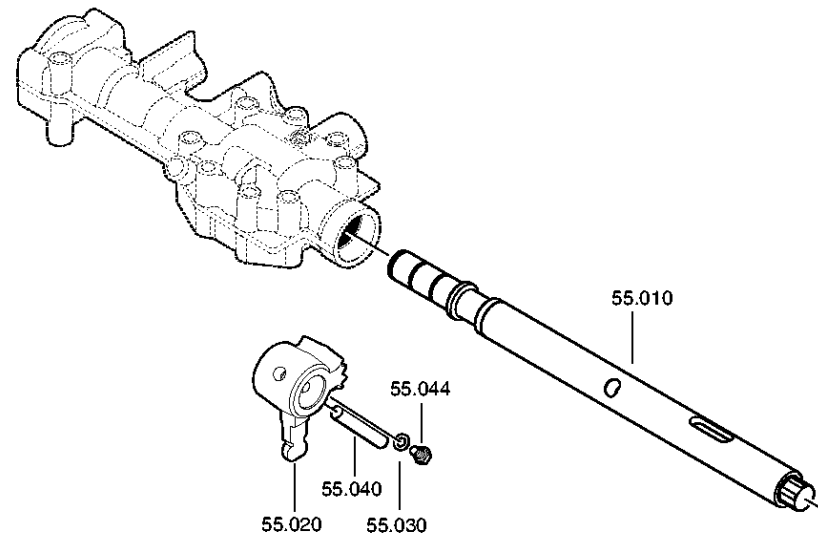
Material number: 1346.002.089

Plant: 150.55.03-1

Material-assembly-group-no: 1346.155.013



6 S 1000 TO /
GEARSHIFT SHAFT



Plant

Page 1 from 1

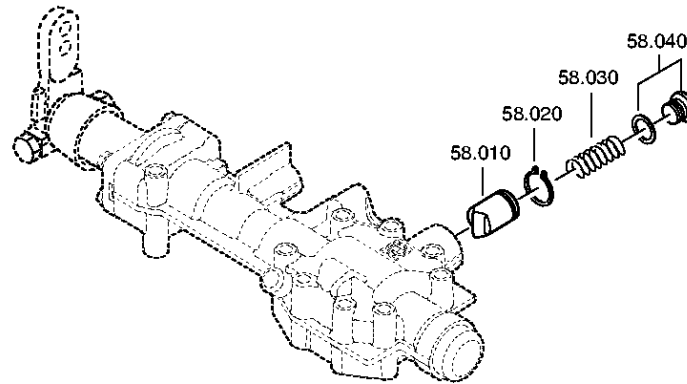
Material number: 1346.002.089

Plant: 150.58.01-1

Material-assembly-group-no: 1346.158.004



6 S 1000 TO /
DETENT



Plant

Page 1 from 1

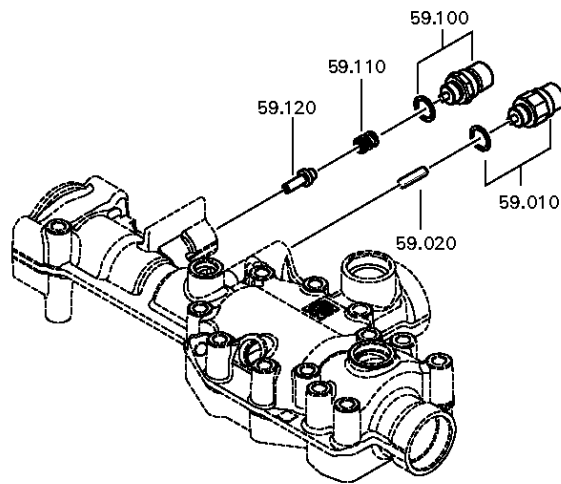
Material number: 1346.002.089

Plant: 150.59.01-1

Material-assembly-group-no: 1346.159.042



6 S 1000 TO /
SWITCH



Plant

Page 1 from 1

Material number: 1346.002.089

Plant: 150.93.42-1

Material-assembly-group-no: 6060.168.009



6 S 1000 TO /
CLUTCH RELEASE DEVICE

