



КПП ZF

КАТАЛОГ

16S 2531 TO(16S 2531TO, 16S2531 TO)

1356 051 079 (1356051079)

DAF

Каталог запчастей

ZF Friedrichshafen AG
Hauptverwaltung
80038 Friedrichshafen
Deutschland
Telefon: +49 7541 77-0
Telefax: +49 7541 77-908000
www.zf.com

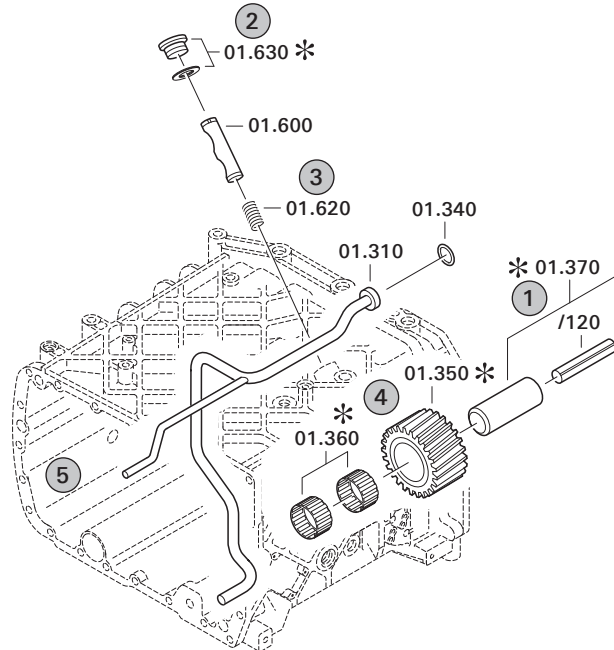
zuständiges Werk:
Friedrichshafen

Notes relating to the spare parts catalog

Setup of the spare parts catalog

- Cover sheet
- Technical Cover (only in SDM print)
- Overview of figures
- Figure
- Associated parts list
- Next figure
- Associated parts list
- ...

Figure and parts list



Overview of figures

Bildtafel Figure	Sachnummer Product number	Benennung (Description)	Technische Info Technical info	Description (Benennung)	Menge Quantity	Einheit Unit
068.08.17	1316.170.001	AUSLEGER	WL	SHIFT TURRET	1	Stk
068.08.06	1316.170.031	DECKEL	WL*H-H*VM	COVER	1	Stk
068.08.14	1316.170.808	DECKEL	WL*AUSL+GEH*H-H*HF160N	COVER	1	Stk
08	1316.170.441	ANSCHLUSSTEILE	WL*NG-VORB*RG-SCHL*168N*BAJONETT	CONNECTING PARTS	1	Stk

The "gap" indicates that there is no separate graphics panel (poster) for this assembly
The parts of this assembly are shown with the same mid-section number on the figure

1 Positions and subpositions

Pos.	Sachnummer Product number	Benennung (Description)	Technische Info Technical info	Description (Benennung)	Menge Quantity	Einheit Unit
0370	1315.201.054	RUECKLAUFBOLZEN	KPL.16S151*SG*L= 79	REV.IDLER SHAFT	1	Stk
/0120	0631.329.293	SPANNSTIFT		SLOT. PIN	1	Stk

Positions marked with "/" are the individual items of a completion
For example: Position 0370 contains a centering pin with the position /0120

2 Combinations with standardized parts

Pos.	Sachnummer Product number	Benennung (Description)	Technische Info Technical info	Description (Benennung)	Menge Quantity	Einheit Unit
0630		VERSCHL.SCHR.		SCREW PLUG	1	Stk
	0636.302.067	VERSCHL.SCHR.		SCREW PLUG	1	Stk
	0634.801.249	DICHTRING	A 26 X 31	SEALING RING	1	Stk

The parts list shows the components included in the combination of standardized parts

3 Depiction of position/item number on the figure and in the parts list

01.620 - on the figure 01 relates to the assembly in which the position is included. Due to program-related reasons, it is shown on the figure.

0620 - in the parts list

Pos.	Sachnummer Product number	Benennung (Description)	Technische Info Technical info	Description (Benennung)	Menge Quantity	Einheit Unit
0620	0732.040.736	DRUCKFEDER		COMPRESSION SPRING	1	Stk

4 *-Positions

Positions marked with an * are optional i.e. inclusion in the parts list is not mandatory.
The following note is shown on the figure

je nach Stücklistenausführung
depending on spec. number
*
suivant la nomenclature
secondo la distinta base

5 Parts, dotted display

Parts with dotted display on the figure are only used for orientation of other parts



Pos.	Information	Amendment number
001	Use case -----	
002	Customer DAF TRUCKS N.V.	
003	City EINDHOVEN	
004	DUNS 41-579-9402	
006	Sales Name F105XF	
007	Manufacturer DAF TRUCKS N.V.	
008	Engineering Name	
009	Product Use TRUCK	
011	SOP	
012	Engine	
013	Sales Designation	
014	Manufacturer DAF TRUCKS N.V.	
015	Eng.Displ.	
016	Cylinder	
017	Nom. power 375 kW	
018	RPM at nom. power 1500 1/min	
019	Nom. torque 2500 Nm	
020	RPM at nom. torque 1000 1/min	
021	Classification use case -----	
024	TOTAL NUMBER OF WHEELS 6	
025	NUMBER OF DRIVING WHEELS 2	
026	DYNAMIC TYRE RADIUS 522 mm	
027	REAR AXLE RATIO 3.07	
031	PERMISS.GROSS COMBIN.WEIGHT 44 t	
032	Product description -----	
033	ATTACHED AGRREGATES 1 IT3 ECOSPLIT	
034	ATTACHM.POS.HEAT EXCHANGER BACK LEFT	
035	DES.CONN.HEAT EXCHANGER FLANGE-MOUNTED	
036	CLEANNESS SCALE NUMBER 1 20	
037	CLEANNESS SCALE NUMBER 2 16	
038	CLEANNESS SPECIFICATION ZFN 5015	
056	OIL CAPACITY, GEARBOX 25 dm3	
057	OIL FILL VARIANT EX WORKS	



Pos.	Information	Amendment number
058	OIL GRADE PERMISSIBLE ACC. TO TE-ML02	
059	OIL CLASS FIRST FILLING E	
060	CODING OUTER CONSERVATION KA1+2	
061	SCOPE OUTER CONSERVATION T	
062	CODING INNER CONSERVATION KI1	
063	CONSERVATION SPECIFICATION ZFN 916	
064	COLOR NOT	
065	COLOUR CLASSIFICATION ACC. TO RAL	
066	PAINTING, ZF STANDARD	
082	Documents -----	
083	16-SPEED GEARB. Drawing 1367.652.001	
084	Alias ID -----	
085	DAF TRUCKS N.V. 1800321	

Assembly group overview

Page 1 from 1

Material number: 1356.051.079



16 S 2531 TO / DAF TRUCKS

Graphics	Pos.	Material number	Name	Quantity	Amend. no.	Techn. Info.
	910	1356.007.037	16 S 253 TO IT	1		
155.A1.03-1	922	6093.050.007	IT 3 ECOSPLIT T	1		
155.E1.05-1	924	6093.101.805	ANCHORAGE	1		

Plant

Page 1 from 1

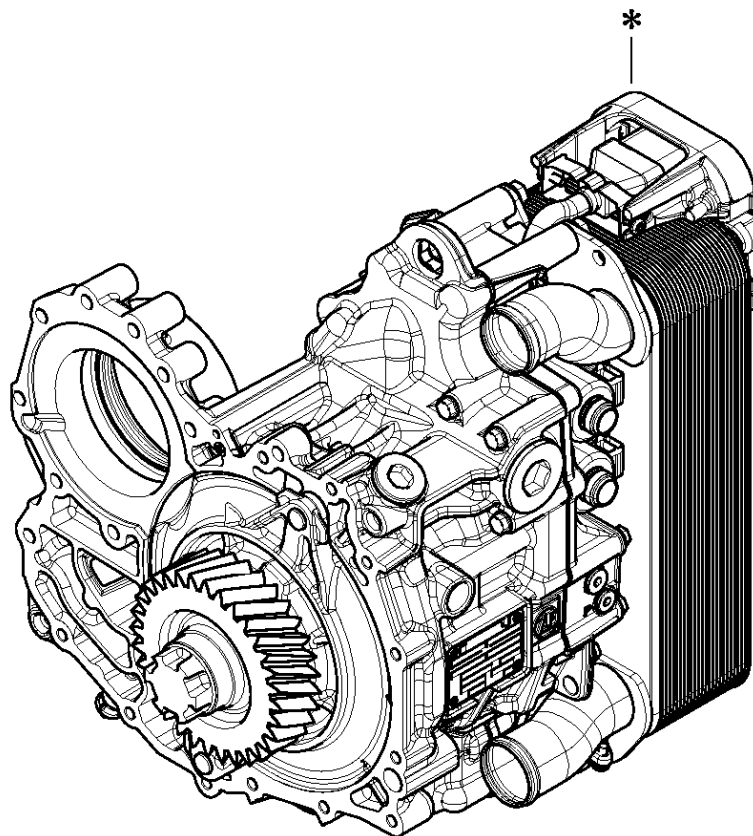
Material number: 1356.051.079

Plant: 155.A1.03-1

Material-assembly-group-no: 6093.050.007



16 S 2531 TO / DAF TRUCKS
IT 3 ECOSPLIT T



Plant

Page 1 from 3

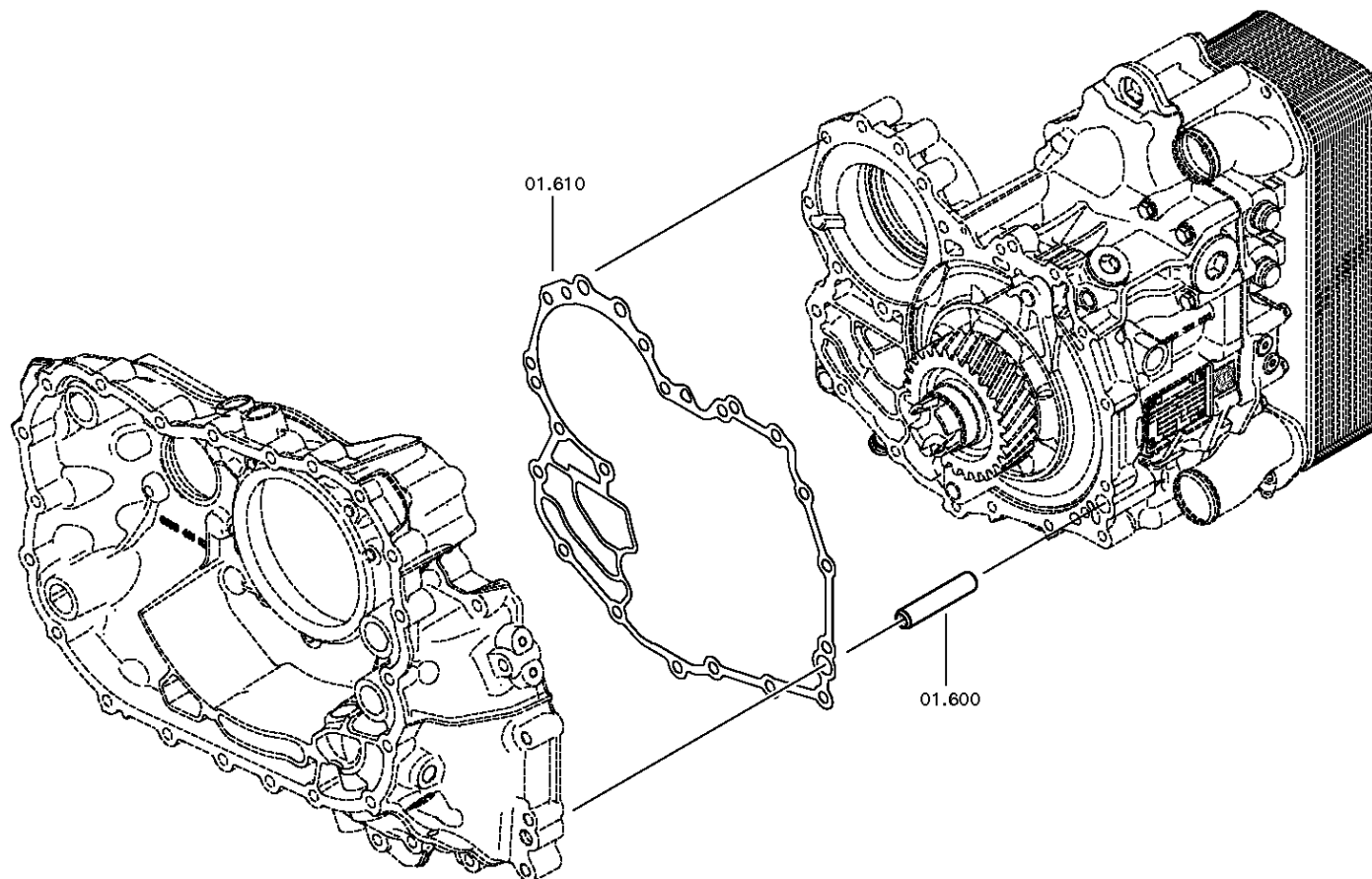
Material number: 1356.051.079

Plant: 155.E1.05-1

Material-assembly-group-no: 6093.101.805



16 S 2531 TO / DAF TRUCKS
ANCHORAGE



Plant

Page 2 from 3

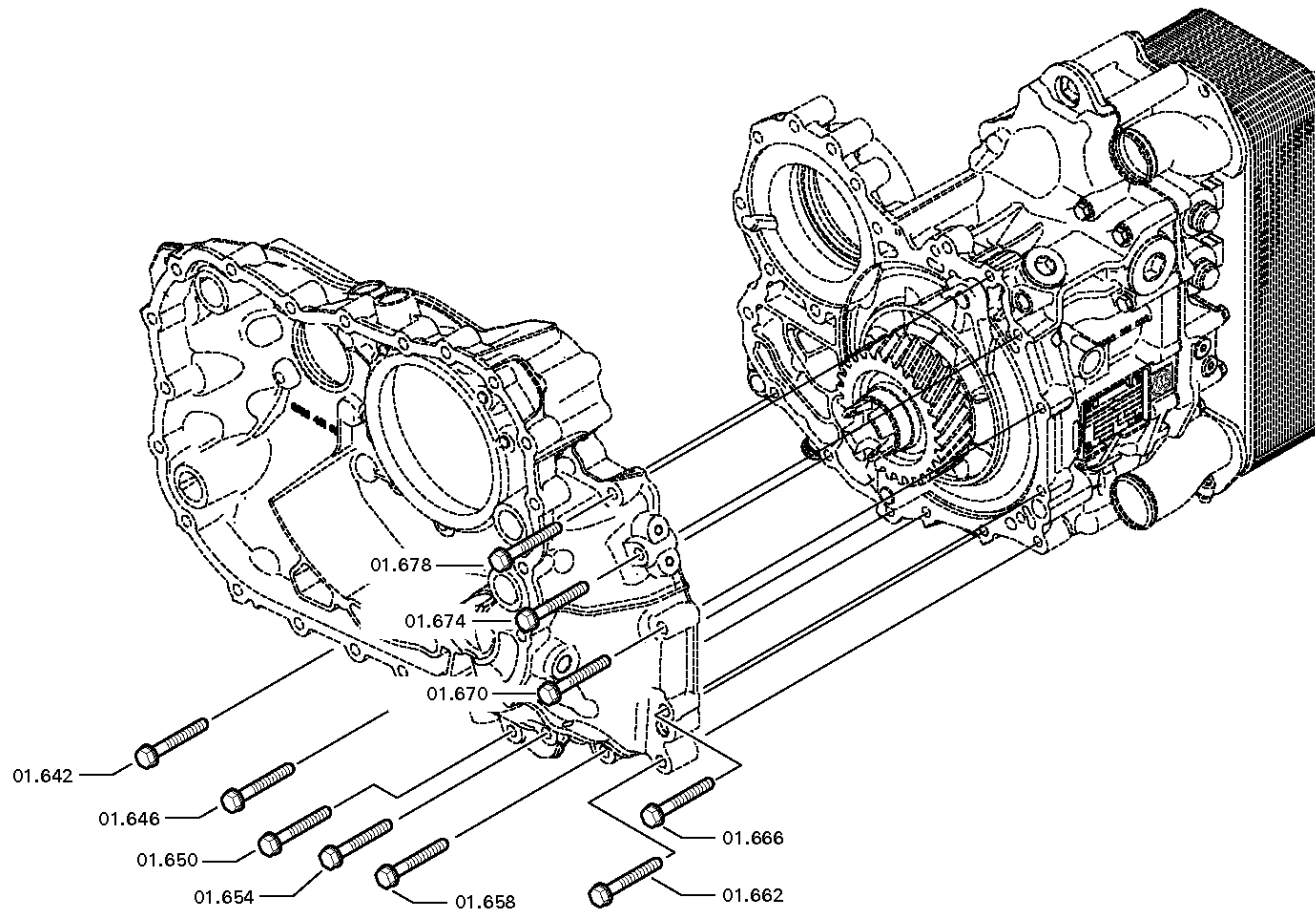
Material number: 1356.051.079

Plant: 155.E1.05-2

Material-assembly-group-no: 6093.101.805



16 S 2531 TO / DAF TRUCKS
ANCHORAGE



Plant

Page 3 from 3

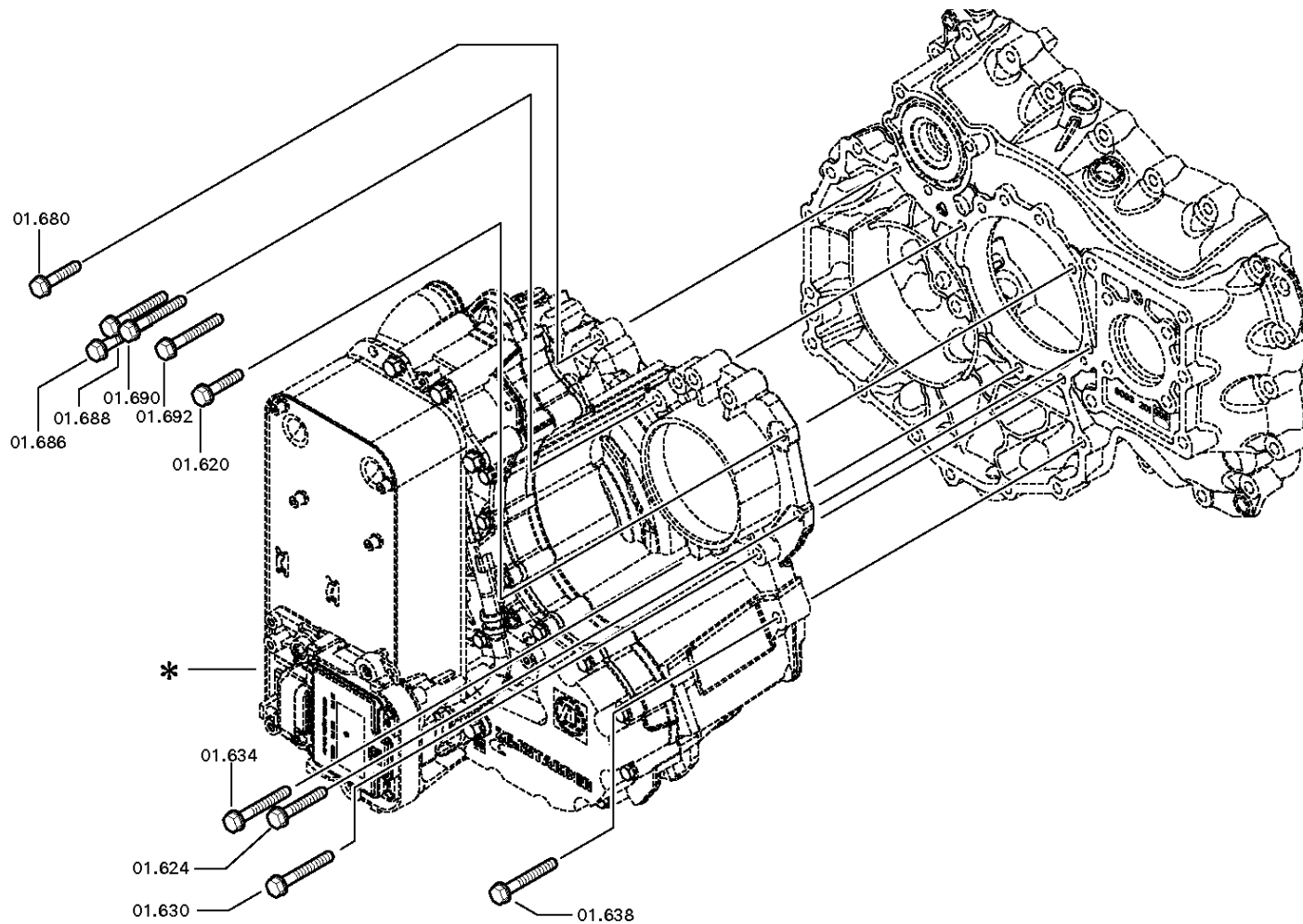
Material number: 1356.051.079

Plant: 155.E1.05-3

Material-assembly-group-no: 6093.101.805



16 S 2531 TO / DAF TRUCKS
ANCHORAGE



Plant

Page 1 from 2

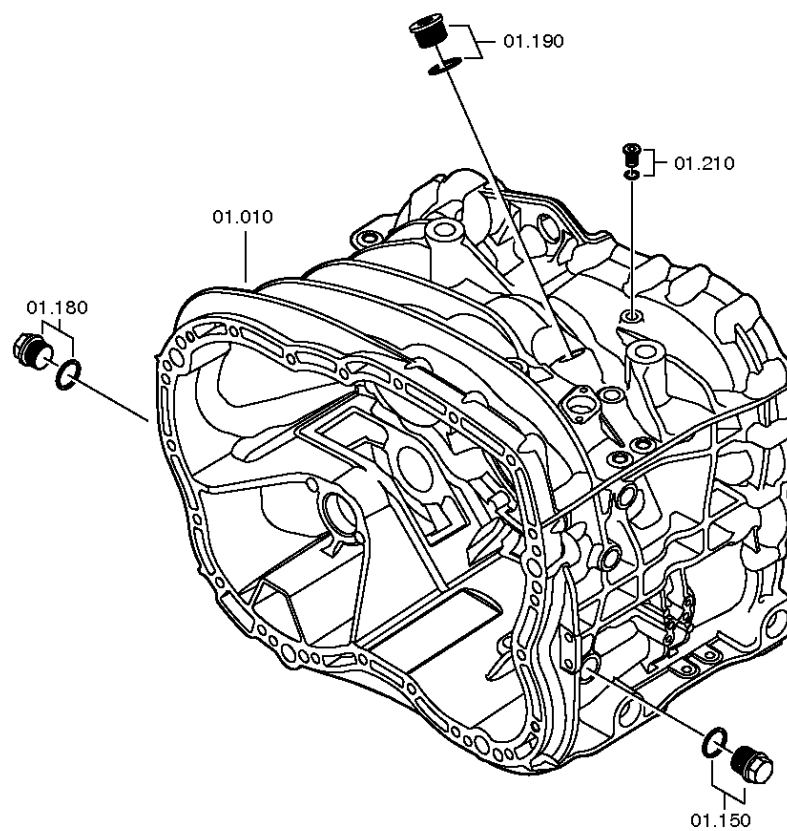
Material number: 1356.007.037

Plant: 161.01.06-1

TRANSMISSION HOUSING



16 S 2531 TO / DAF TRUCKS
TRANSMISSION HOUSING



Plant

Page 2 from 2

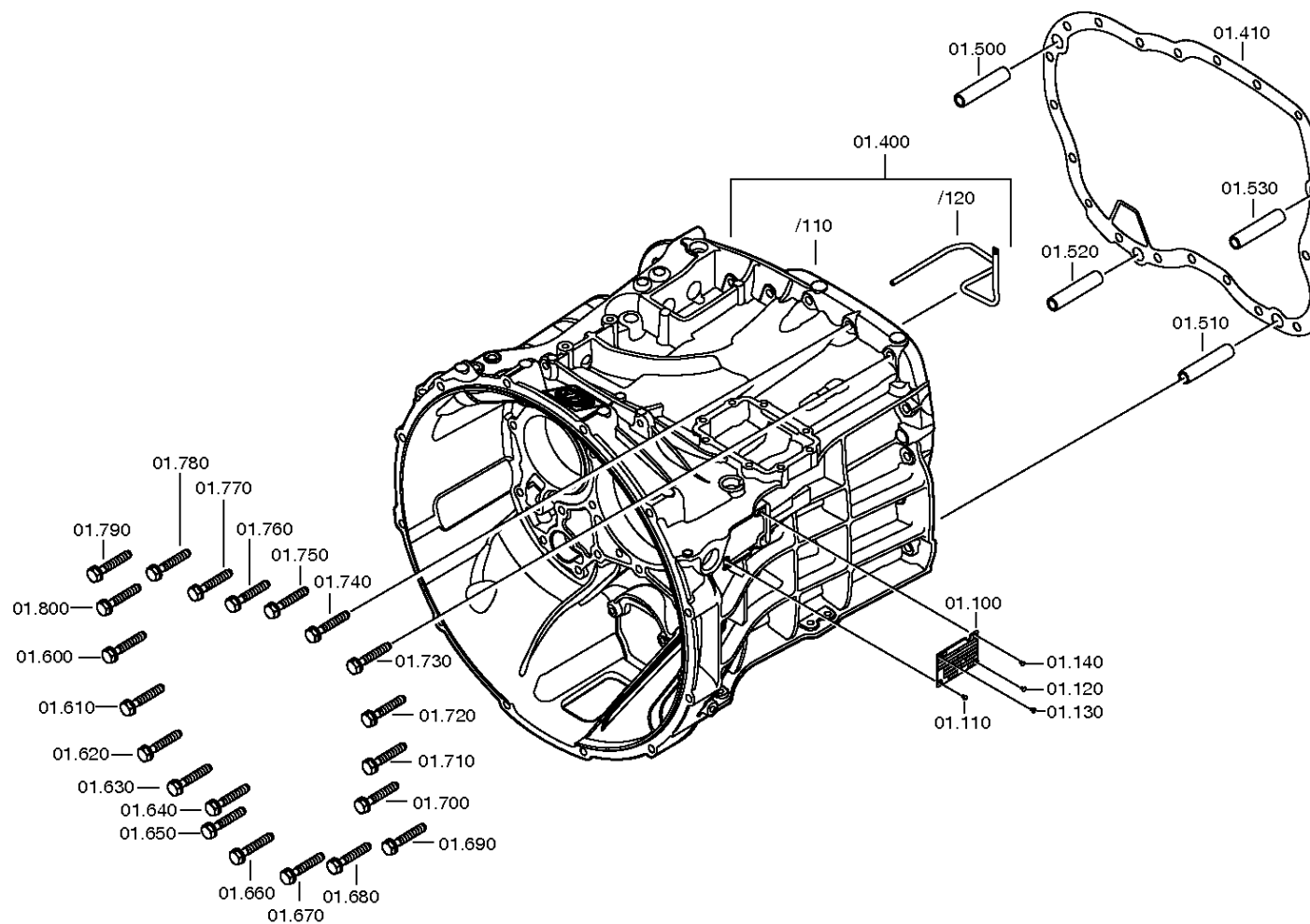
Material number: 1356.007.037

Plant: 161.01.81-1

TRANSMISSION HOUSING



16 S 2531 TO / DAF TRUCKS
TRANSMISSION HOUSING



Plant

Page 1 from 3

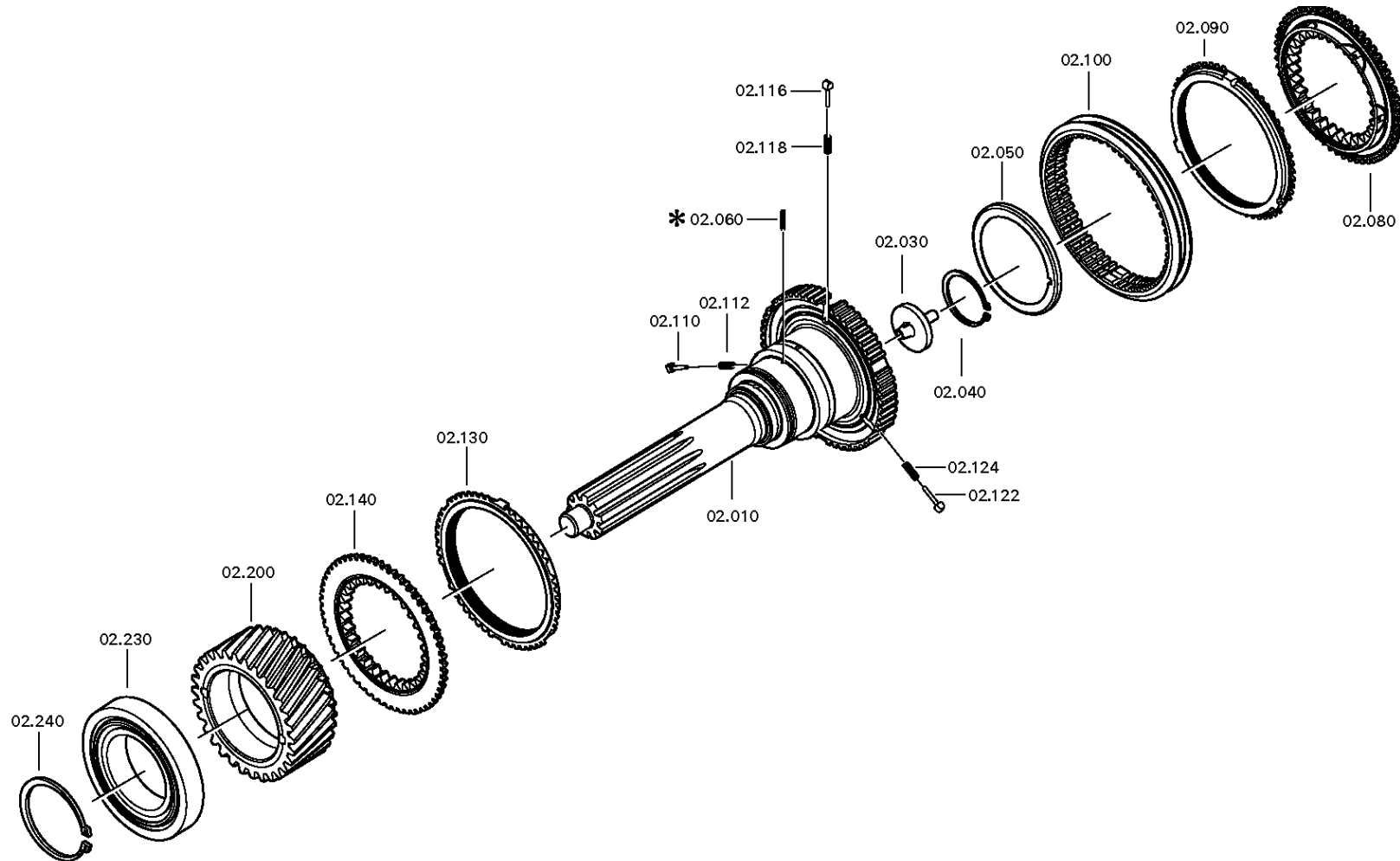
Material number: 1356.007.037

Plant: 161.02.03-1

INPUT SHAFT



16 S 2531 TO / DAF TRUCKS
INPUT SHAFT



Plant

Page 2 from 3

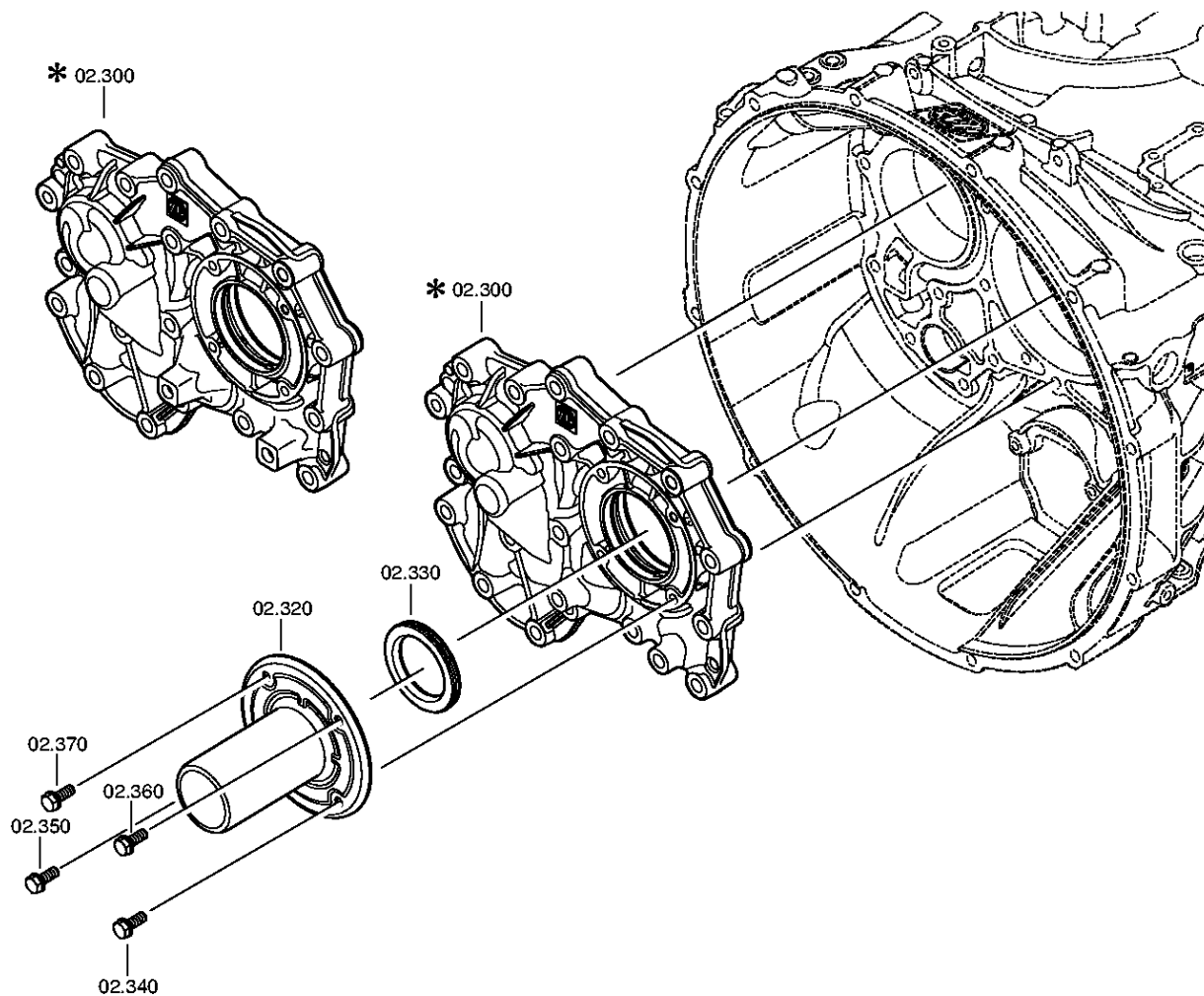
Material number: 1356.007.037

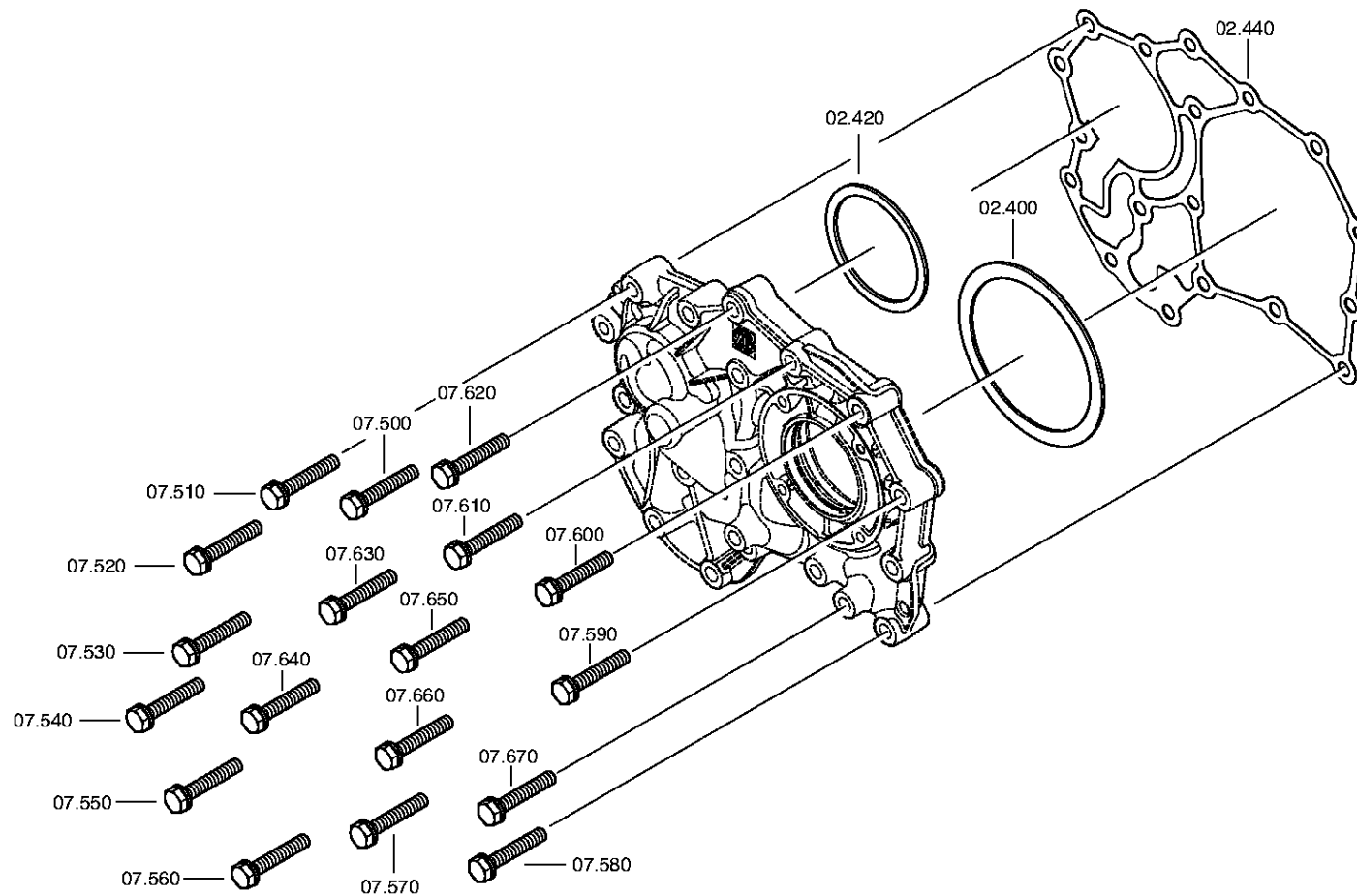
Plant: 161.02.01-1

INPUT SHAFT



16 S 2531 TO / DAF TRUCKS
INPUT SHAFT





Plant

Page 1 from 1

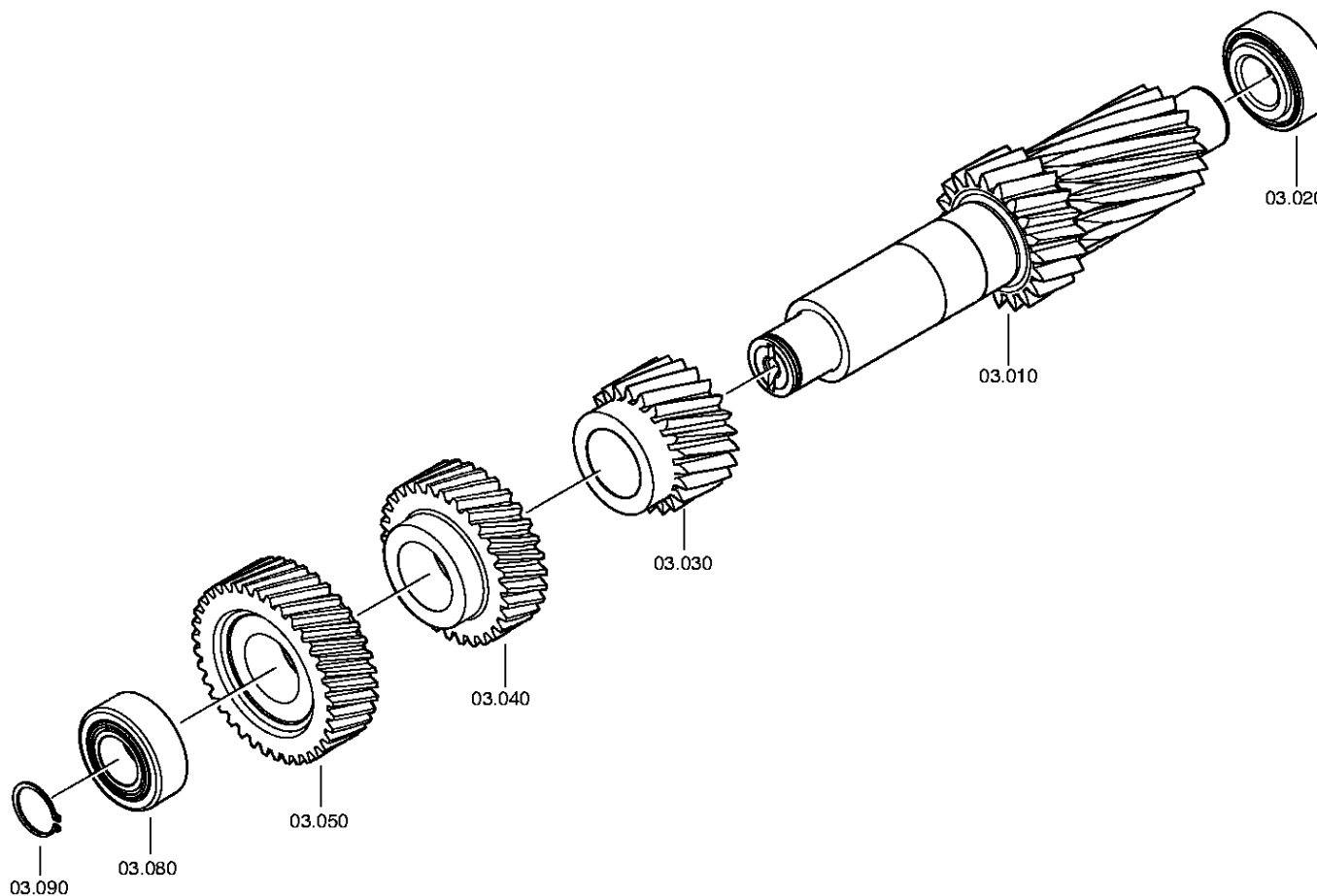
Material number: 1356.007.037

Plant: 161.03.02-1

Material-assembly-group-no: 1356.103.002



16 S 2531 TO / DAF TRUCKS
COUNTERSHAFT



Plant

Page 1 from 1

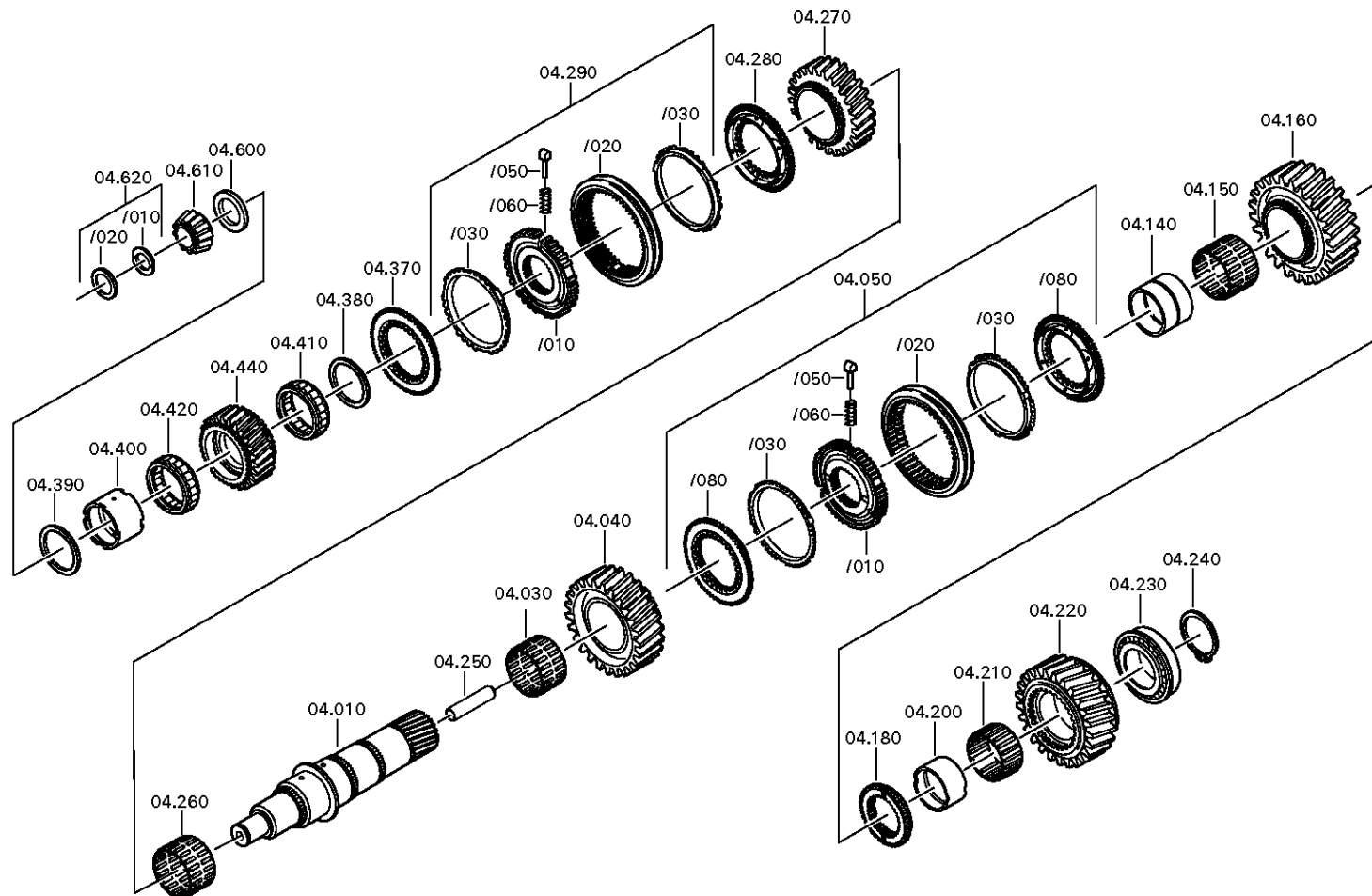
Material number: 1356.007.037

Plant: 161.04.12-1

Material-assembly-group-no: 1356.104.016



16 S 2531 TO / DAF TRUCKS
MAIN SHAFT



Plant

Page 1 from 1

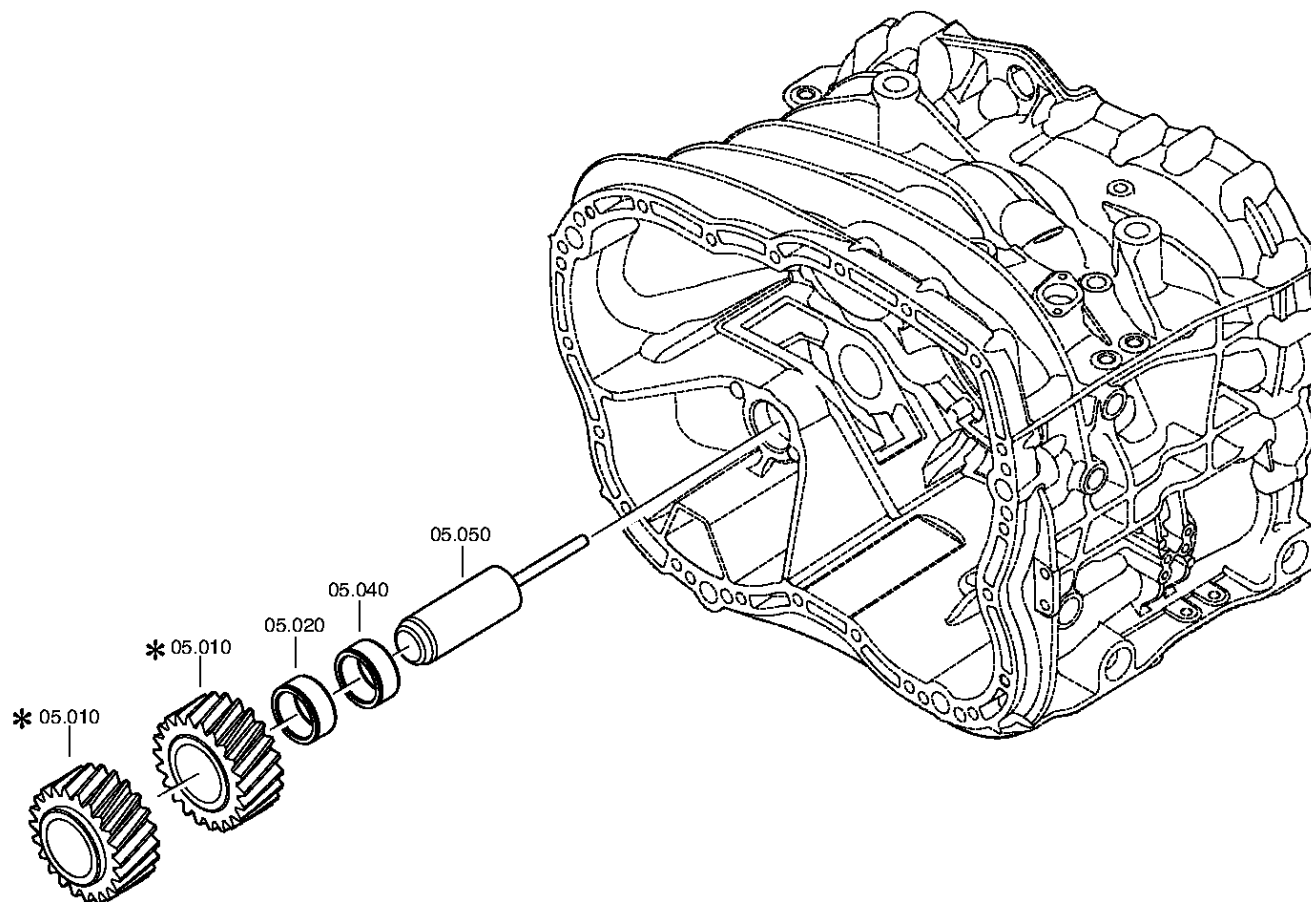
Material number: 1356.007.037

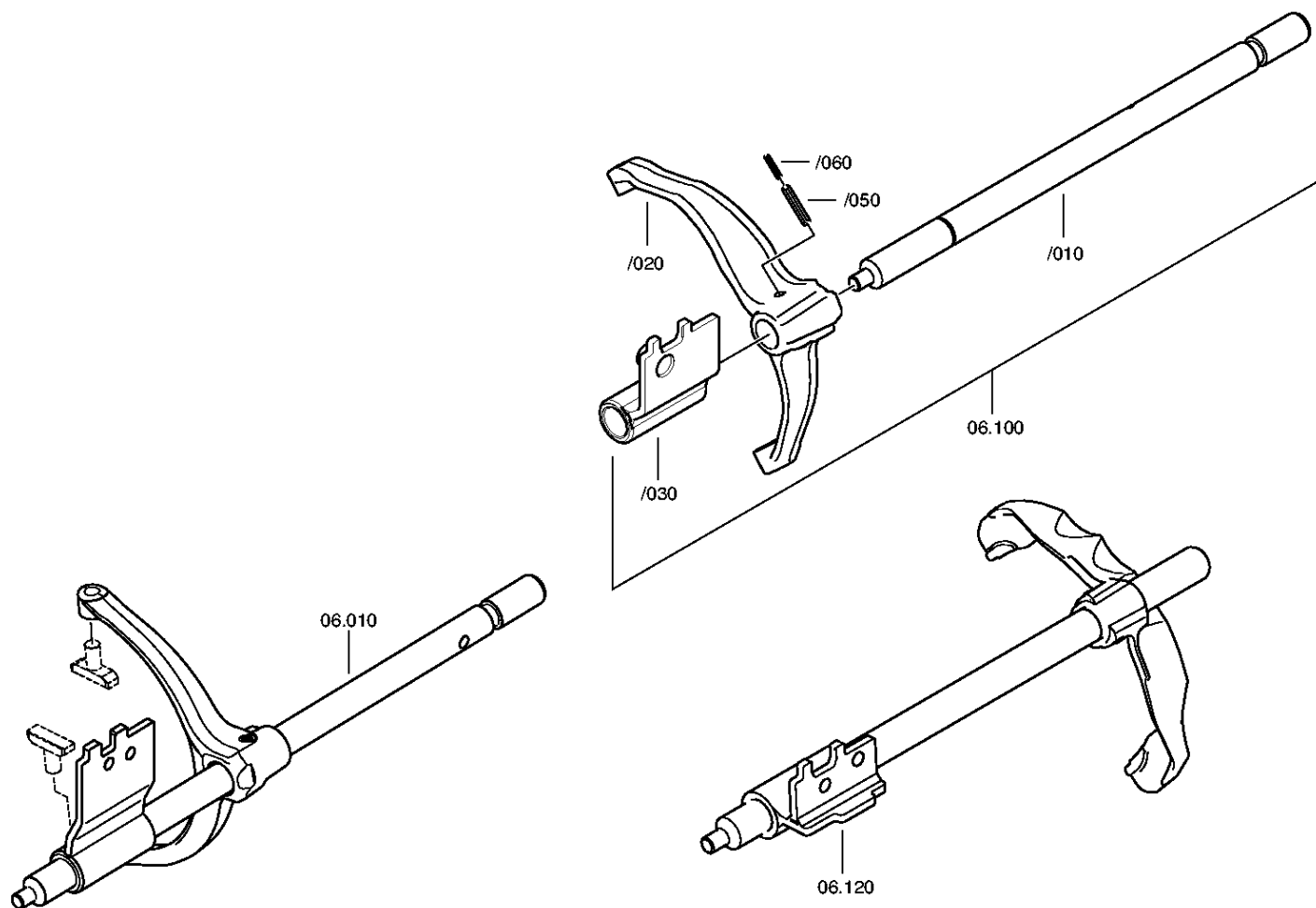
Plant: 161.05.01-1

Material-assembly-group-no: 1325.105.001



16 S 2531 TO / DAF TRUCKS
RETURN

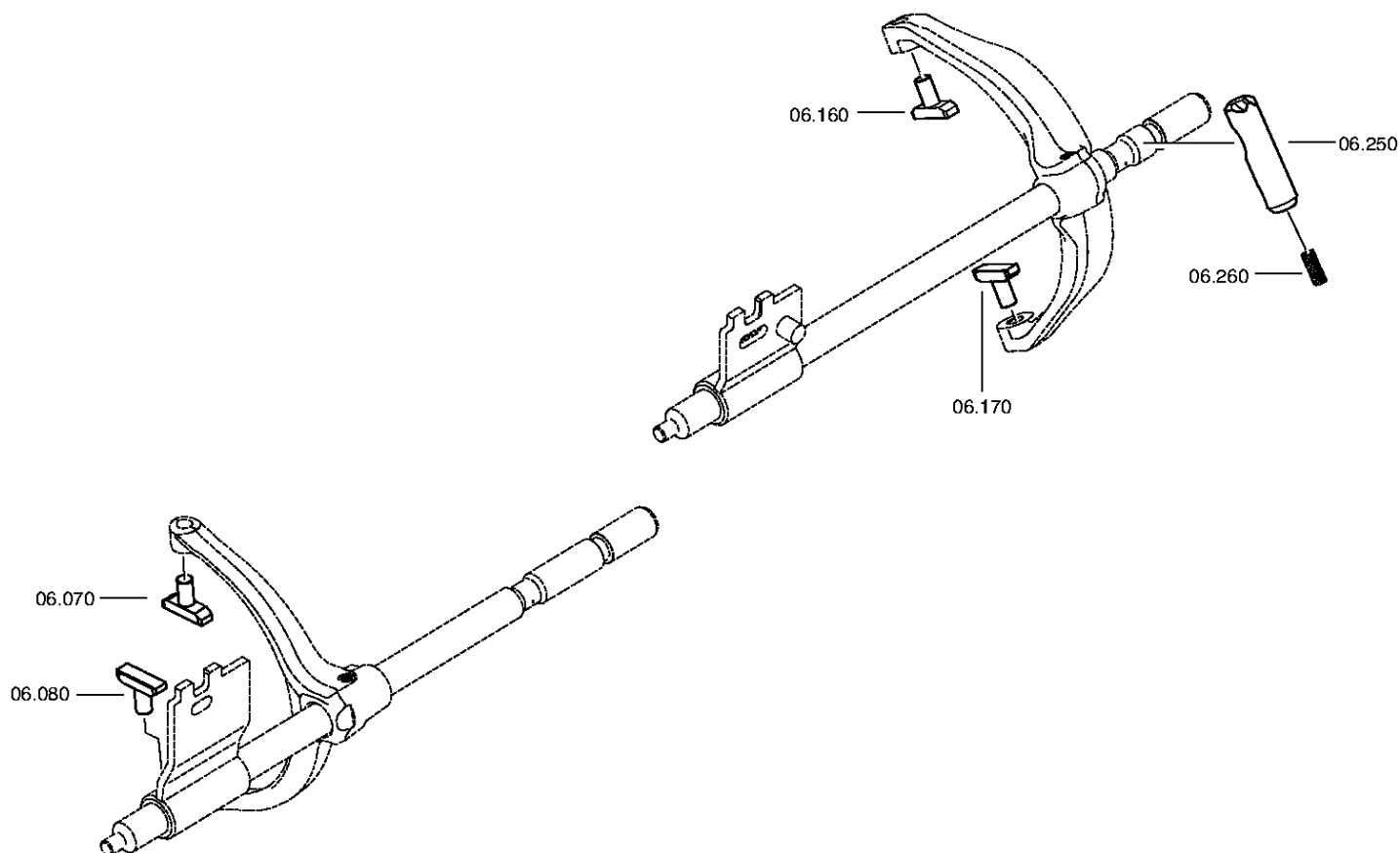




Material number: 1356.007.037
Plant: 161.06.02-1
TRANSMISSION SHIFT SYSTEM



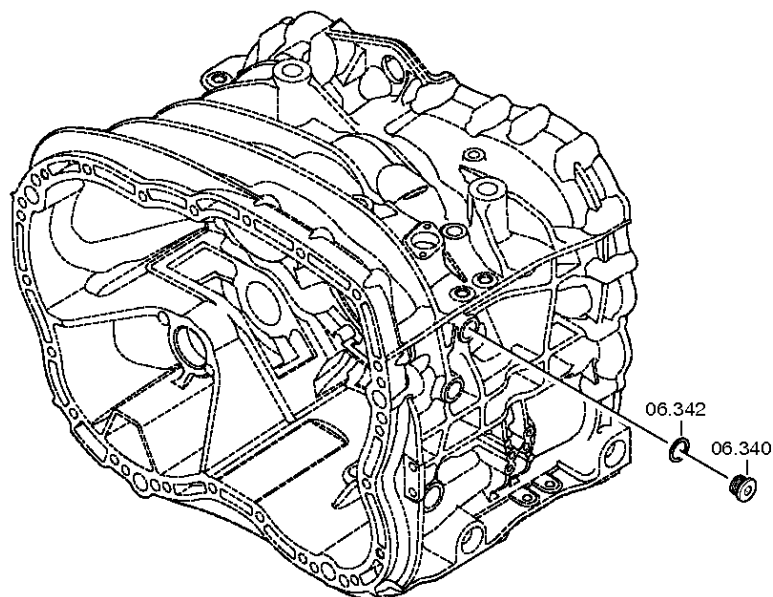
16 S 2531 TO / DAF TRUCKS
TRANSMISSION SHIFT SYSTEM



Material number: 1356.007.037
Plant: 161.06.82-1
TRANSMISSION SHIFT SYSTEM



16 S 2531 TO / DAF TRUCKS
TRANSMISSION SHIFT SYSTEM



Plant

Page 1 from 5

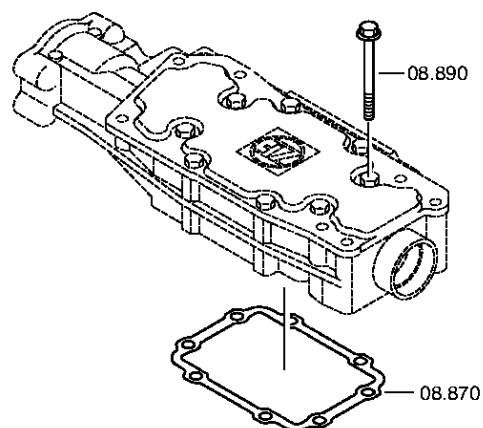
Material number: 1356.007.037

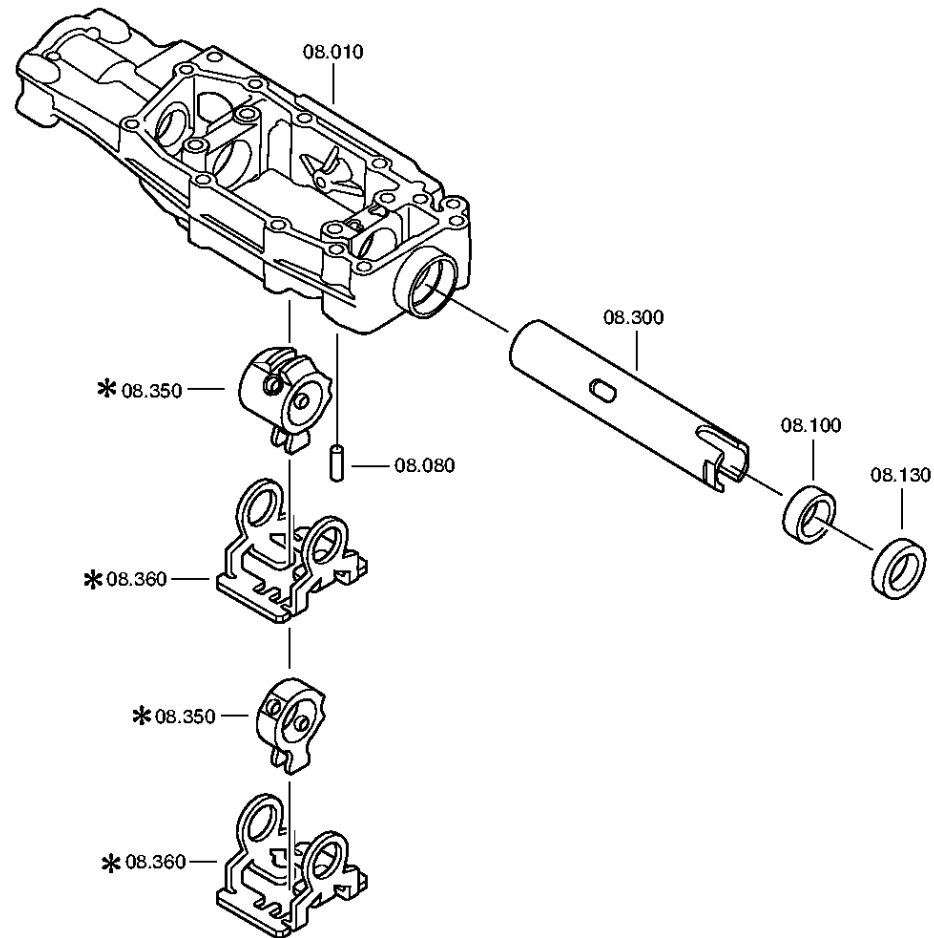
Plant: 161.07.81-1

GEAR SHIFT HOUSING



16 S 2531 TO / DAF TRUCKS
GEAR SHIFT HOUSING





Plant

Page 3 from 5

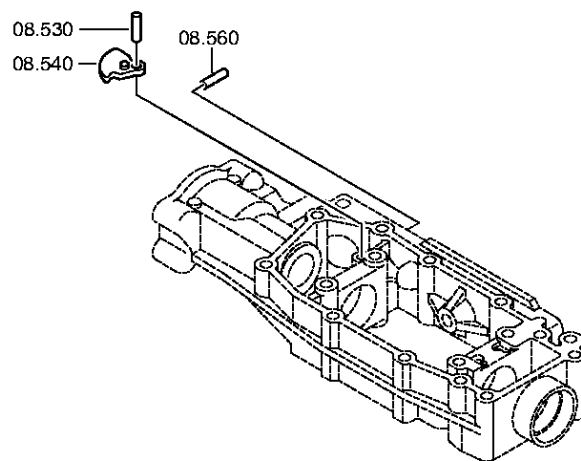
Material number: 1356.007.037

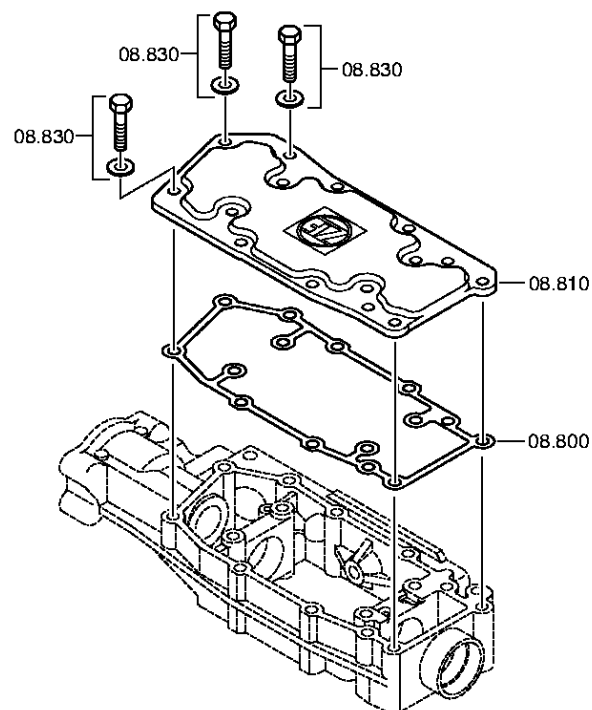
Plant: 068.07.82-1

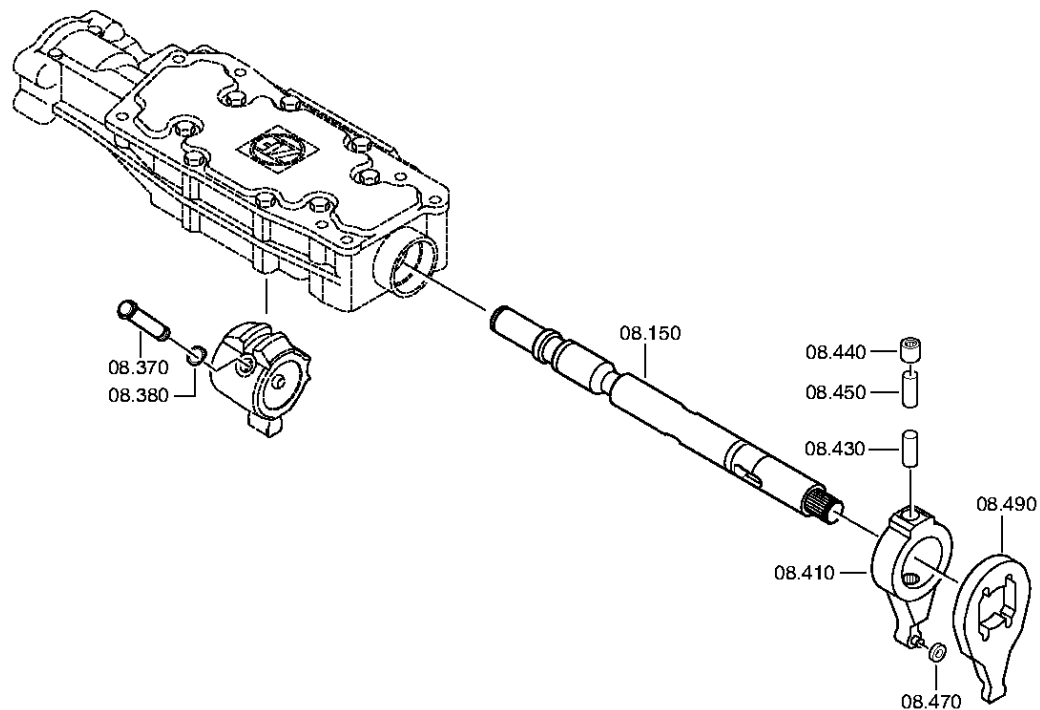
GEAR SHIFT HOUSING

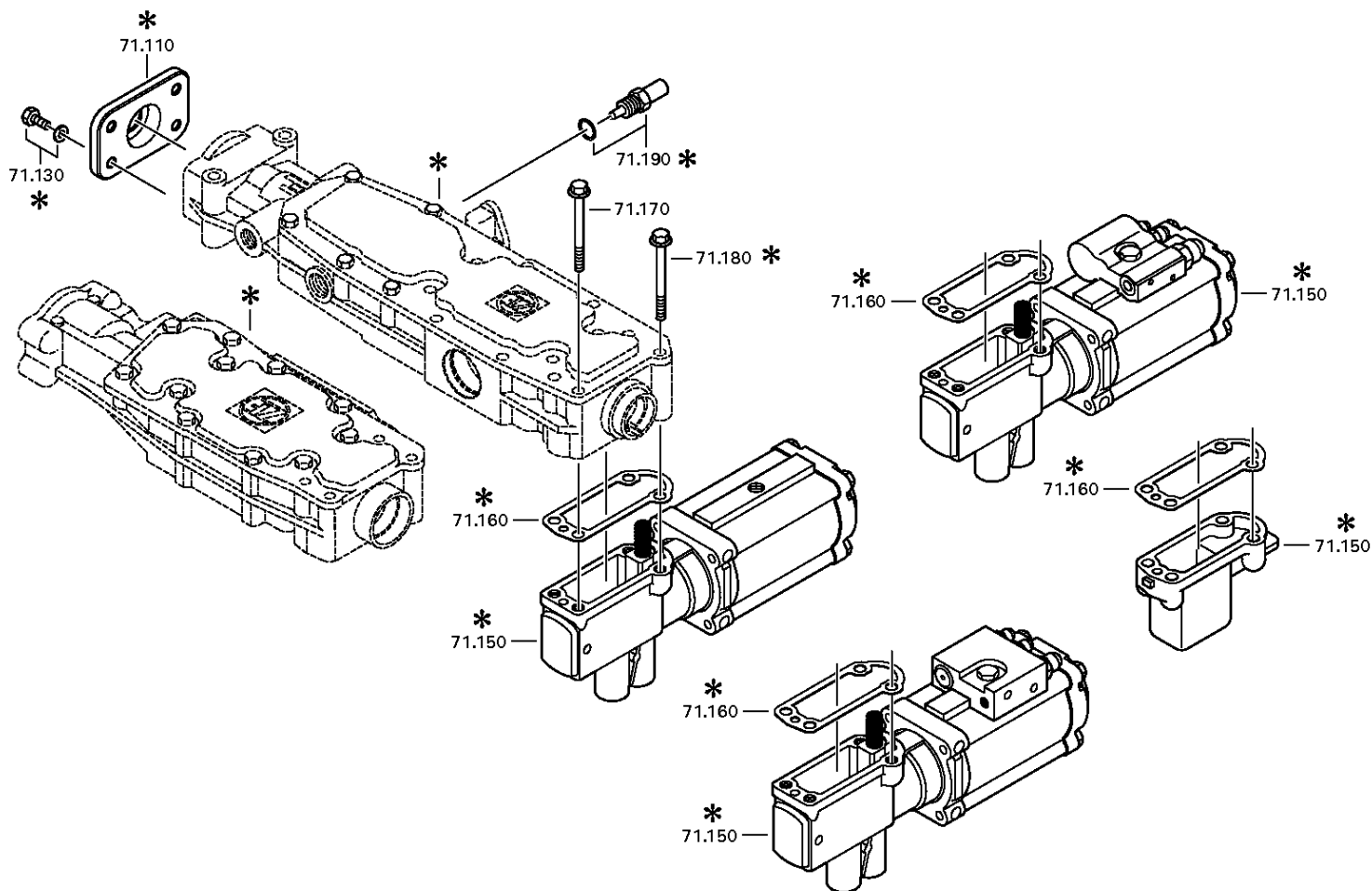


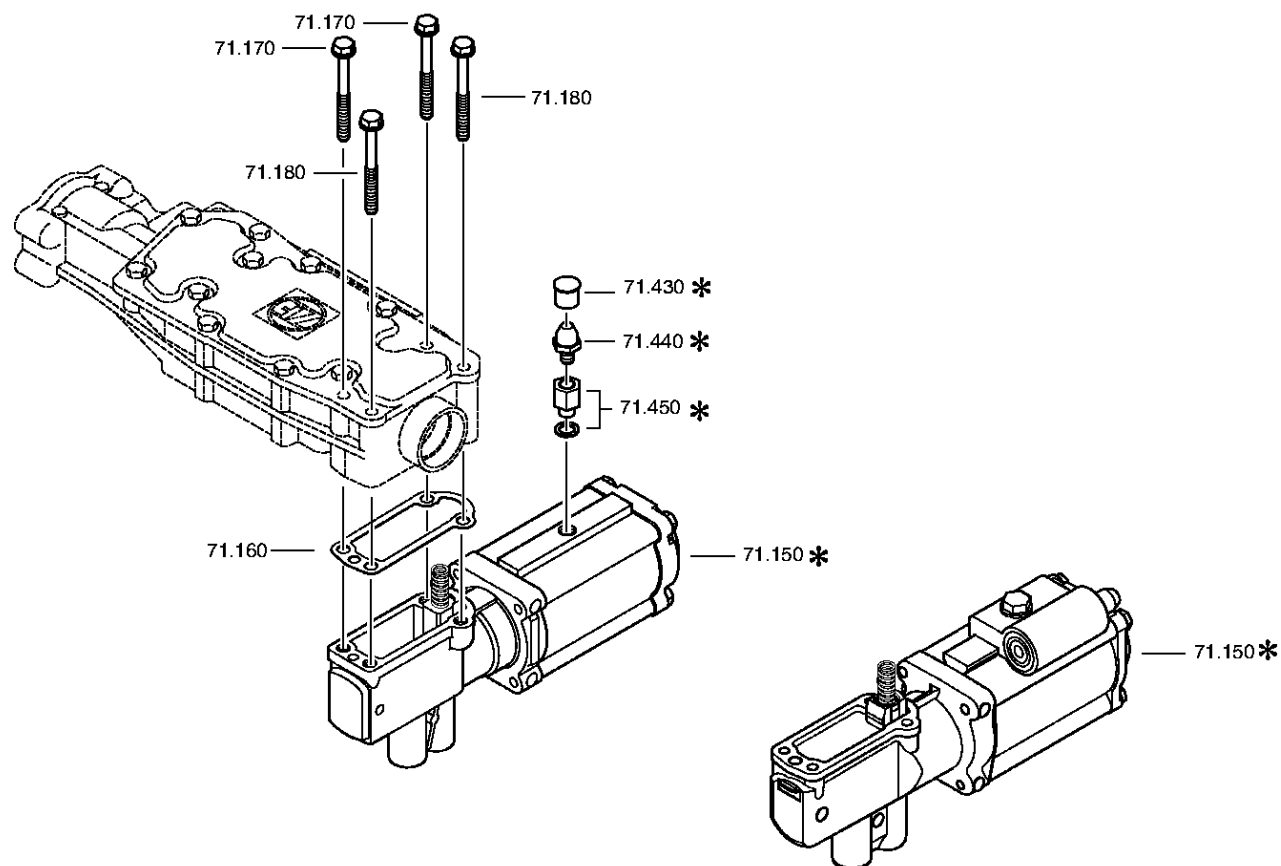
16 S 2531 TO / DAF TRUCKS
GEAR SHIFT HOUSING











Plant

Page 1 from 2

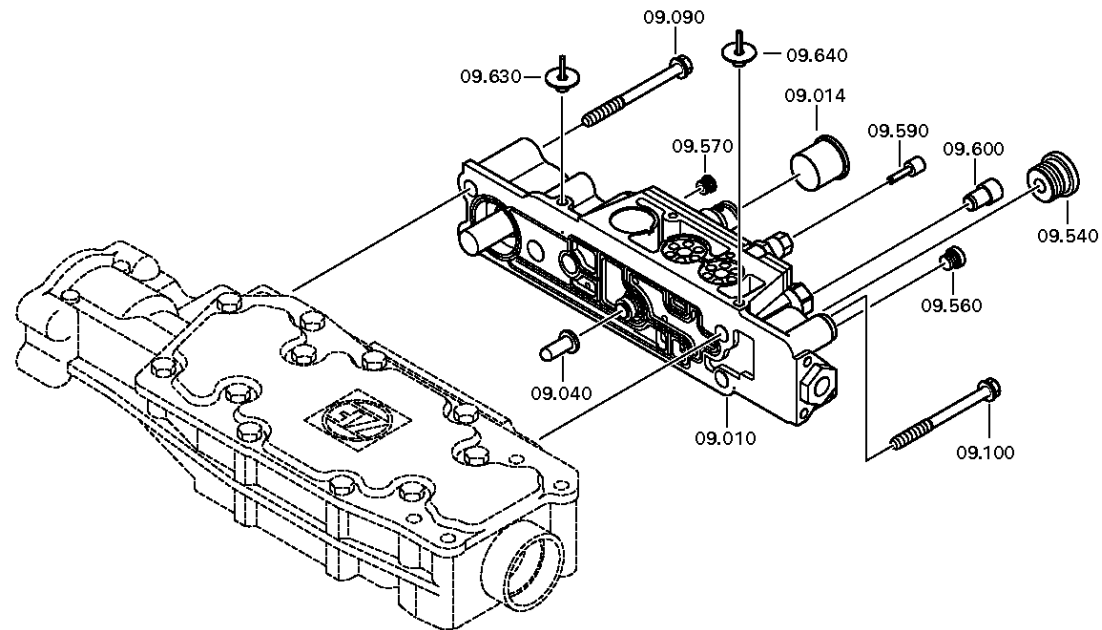
Material number: 1356.007.037

Plant: 161.09.11-1

VALVE BLOCK



16 S 2531 TO / DAF TRUCKS
VALVE BLOCK



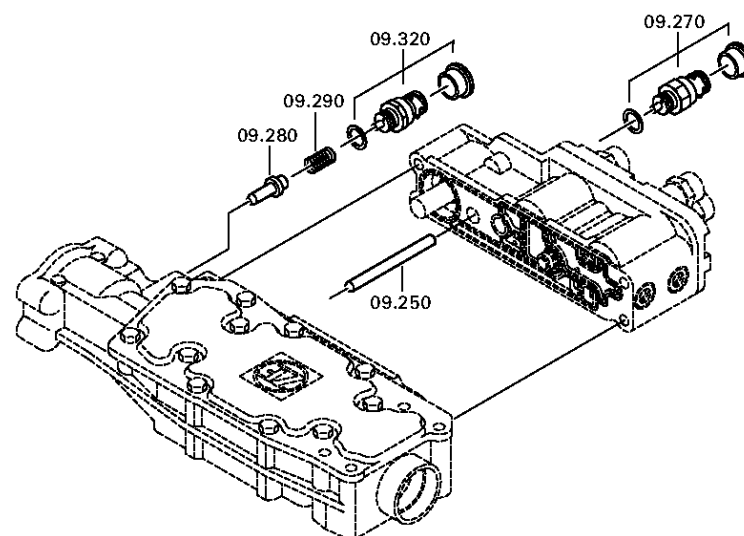
Material number: 1356.007.037

Plant: 161.09.03-1

VALVE BLOCK



16 S 2531 TO / DAF TRUCKS
VALVE BLOCK



Plant

Page 1 from 2

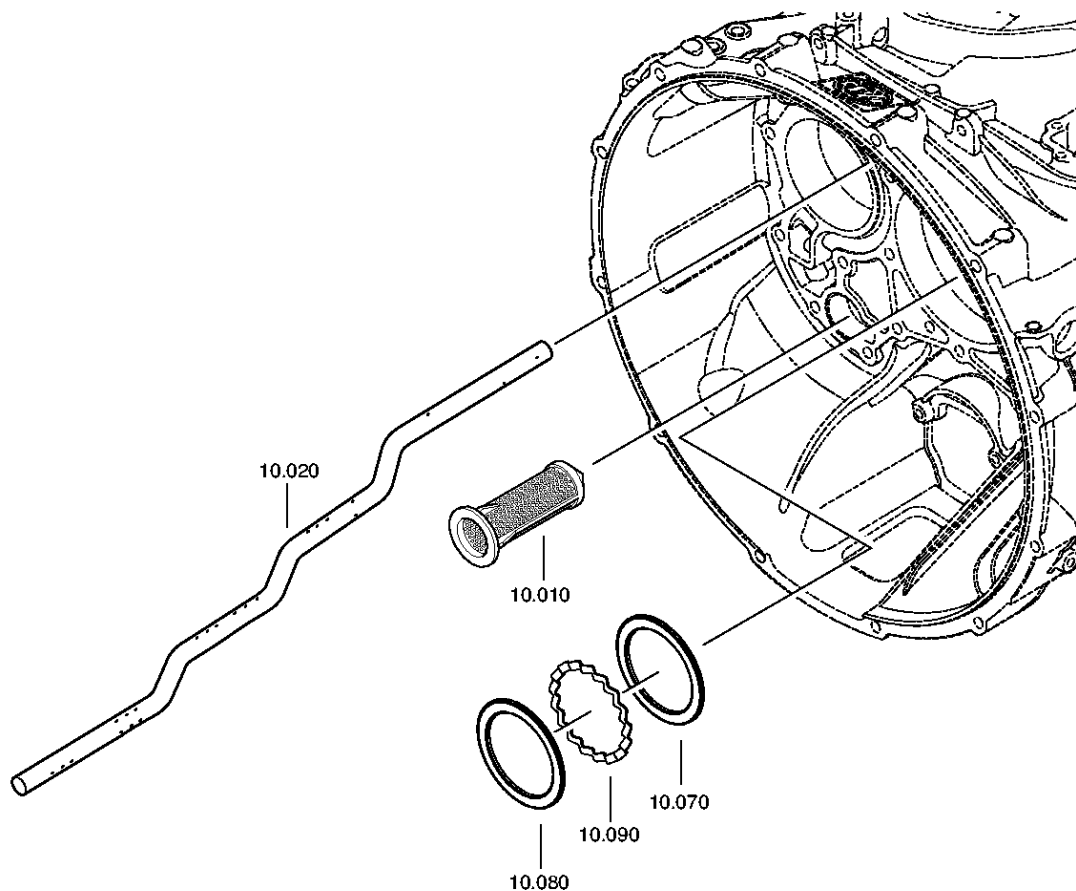
Material number: 1356.007.037

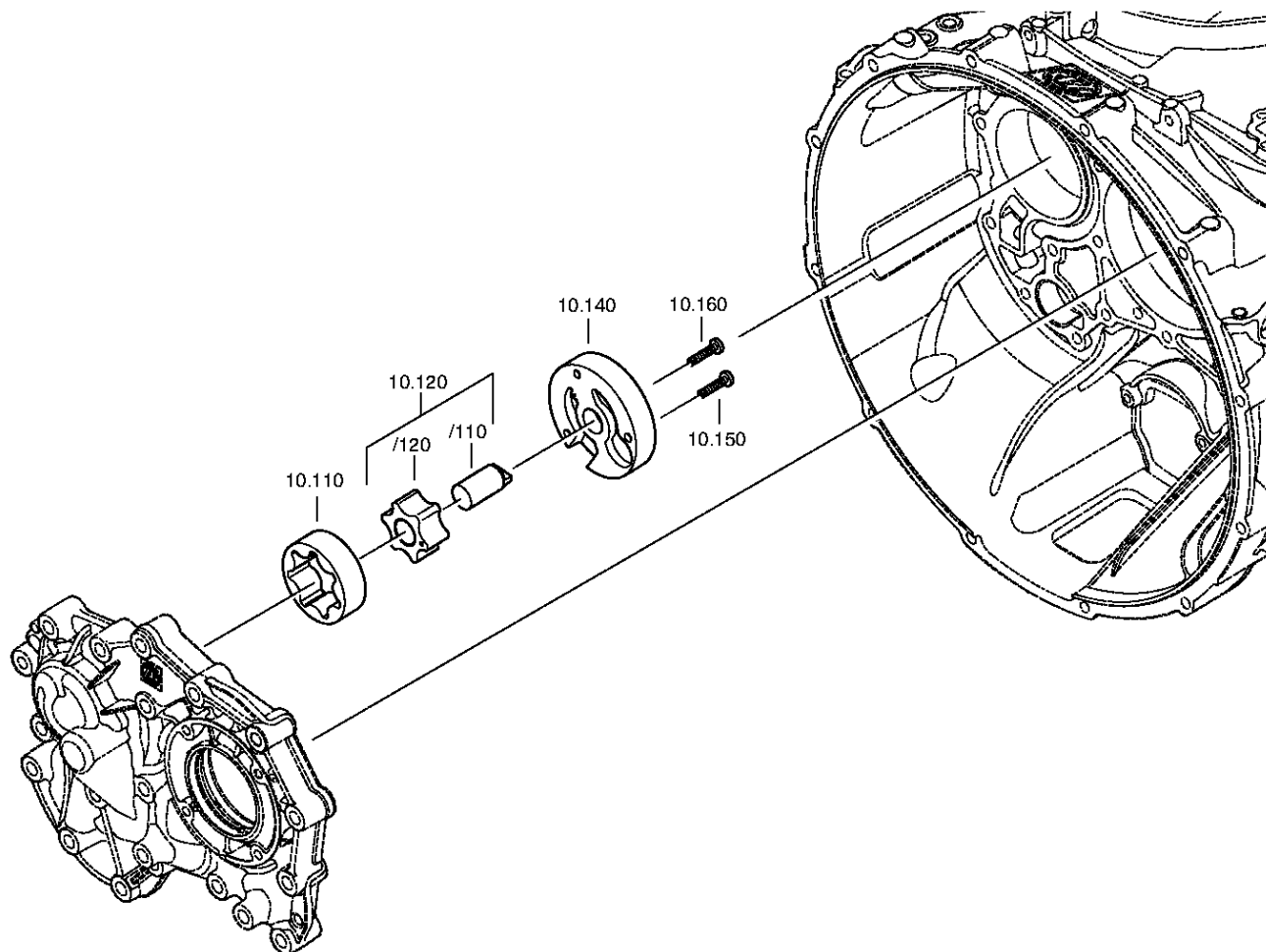
Plant: 161.10.04-1

OIL SUPPLY



16 S 2531 TO / DAF TRUCKS
OIL SUPPLY





Plant

Page 1 from 1

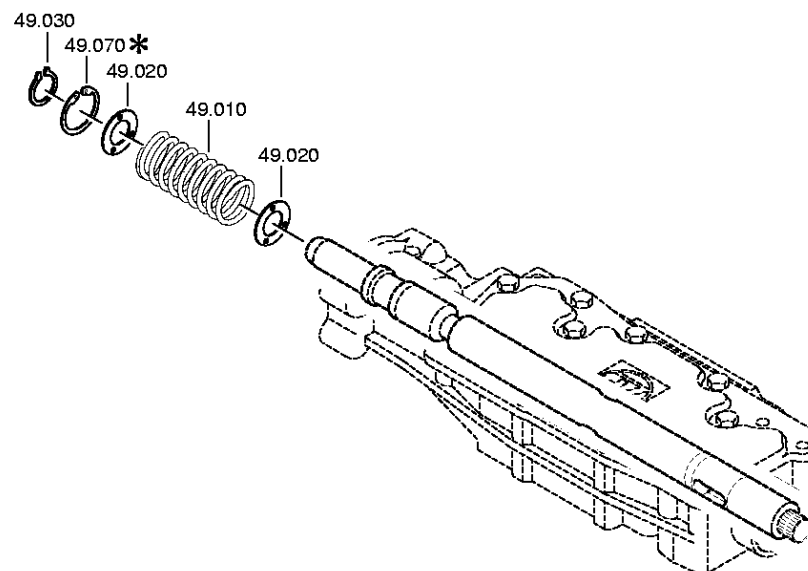
Material number: 1356.007.037

Plant: 068.12.24-1

Material-assembly-group-no: 1341.149.003



16 S 2531 TO / DAF TRUCKS
SET OF SPRINGS



Plant

Page 1 from 1

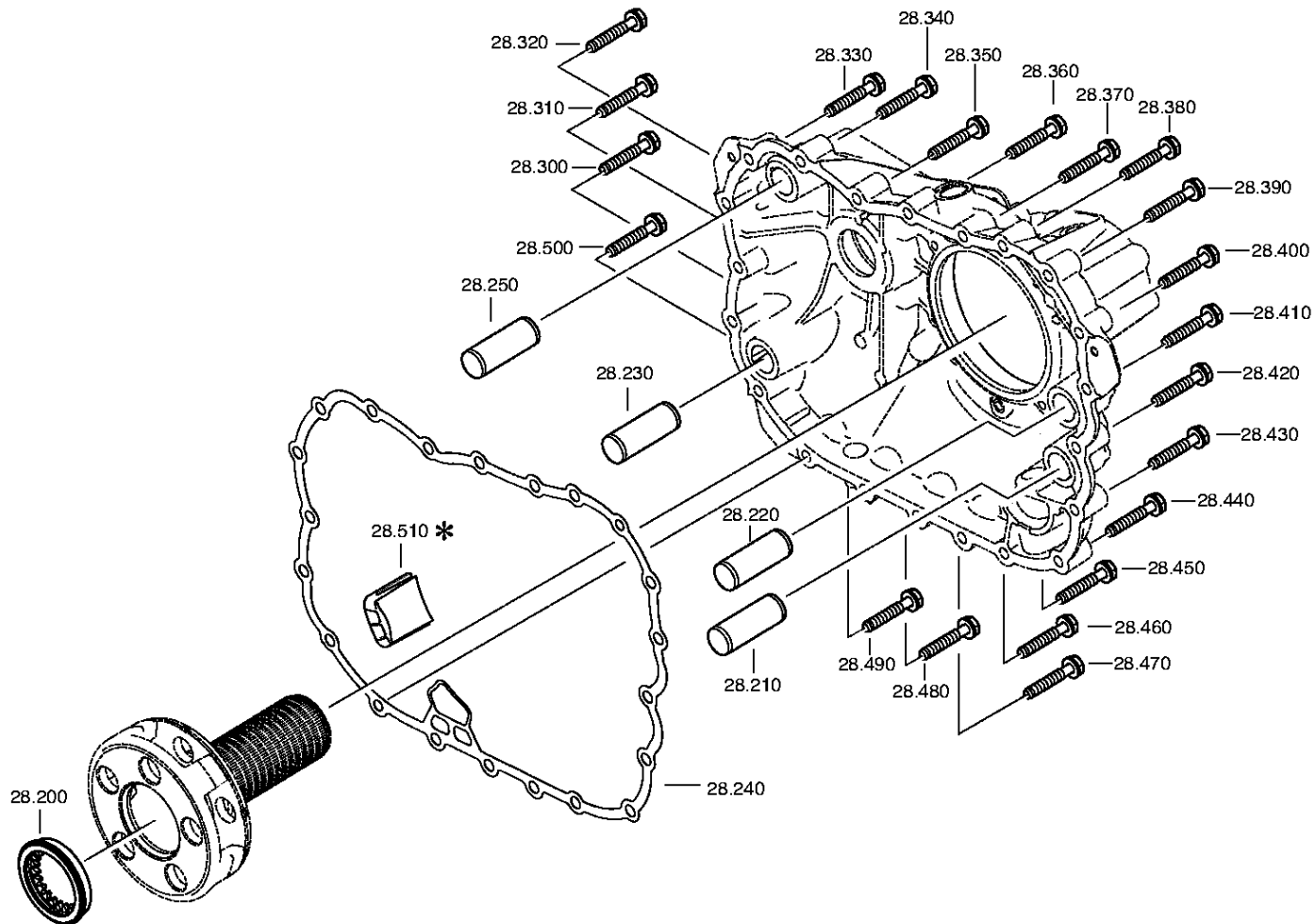
Material number: 1356.007.037

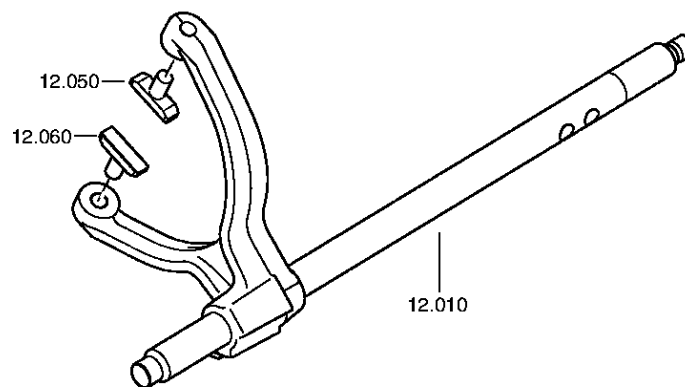
Plant: 161.28.01-1

Material-assembly-group-no: 1325.128.807



16 S 2531 TO / DAF TRUCKS
PLANETARY RANGE





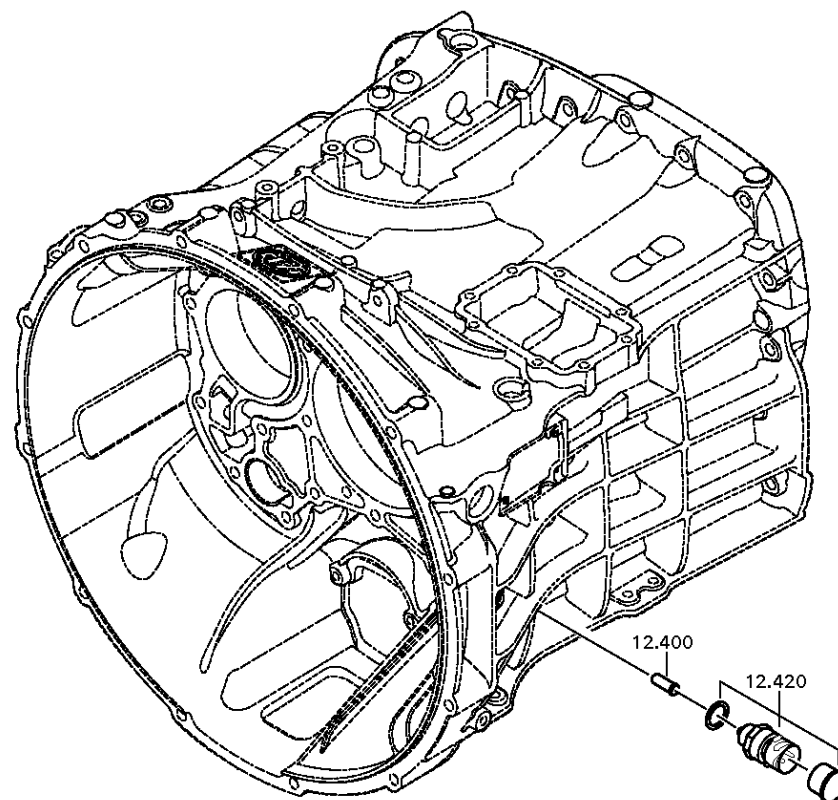
Material number: 1356.007.037

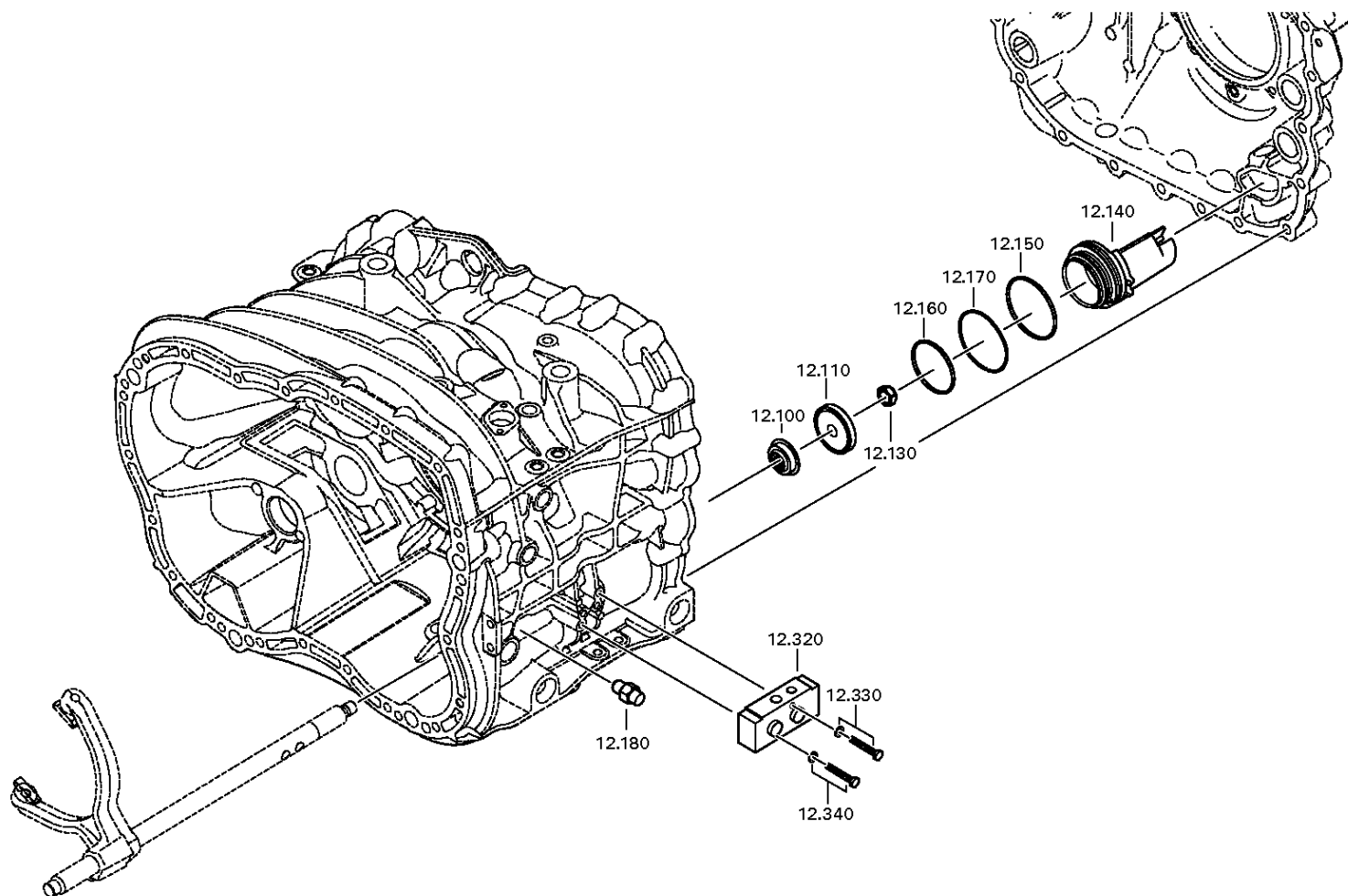
Plant: 161.40.41-1

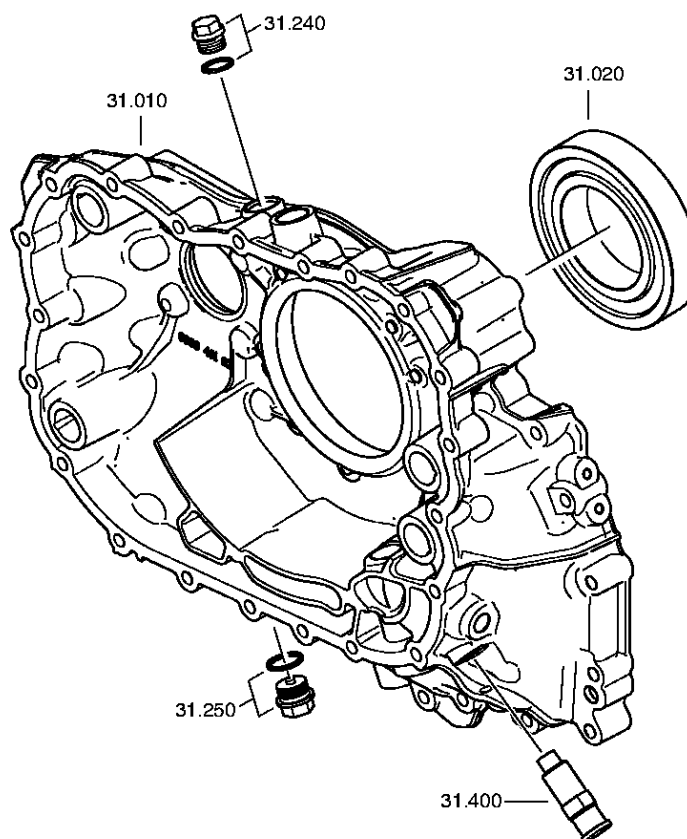
GV-SHIFT SYSTEM



16 S 2531 TO / DAF TRUCKS
GV-SHIFT SYSTEM







Plant

Page 2 from 2

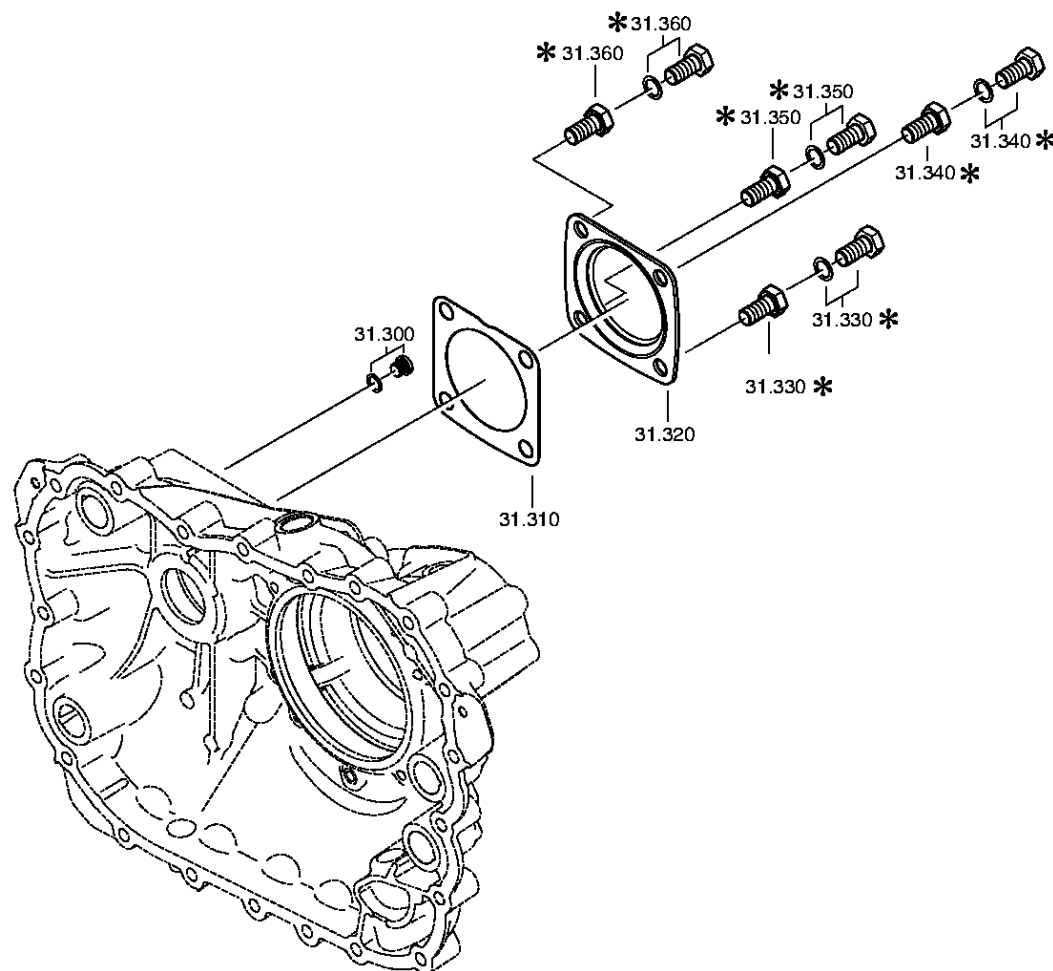
Material number: 1356.007.037

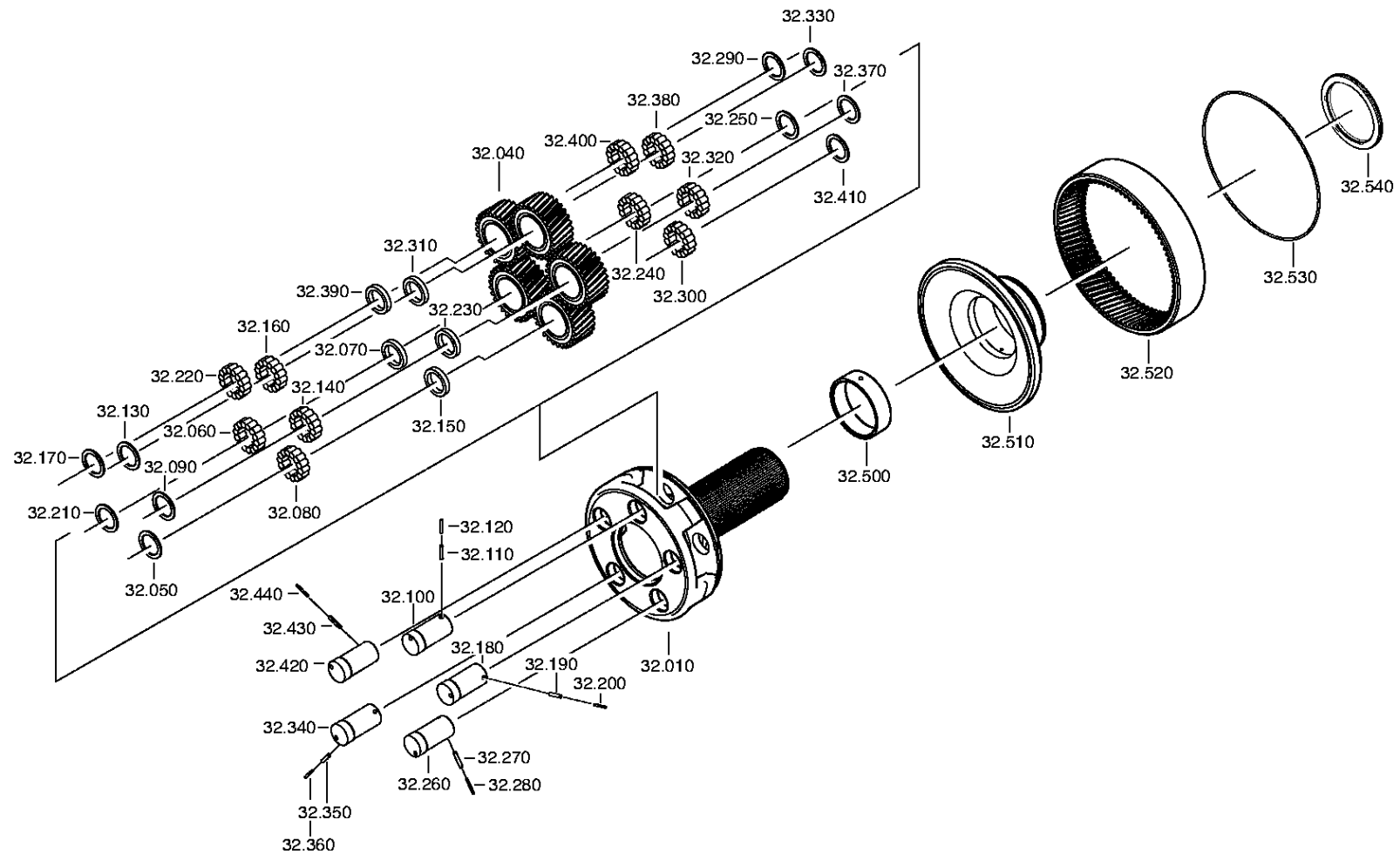
Plant: 161.43.40-1

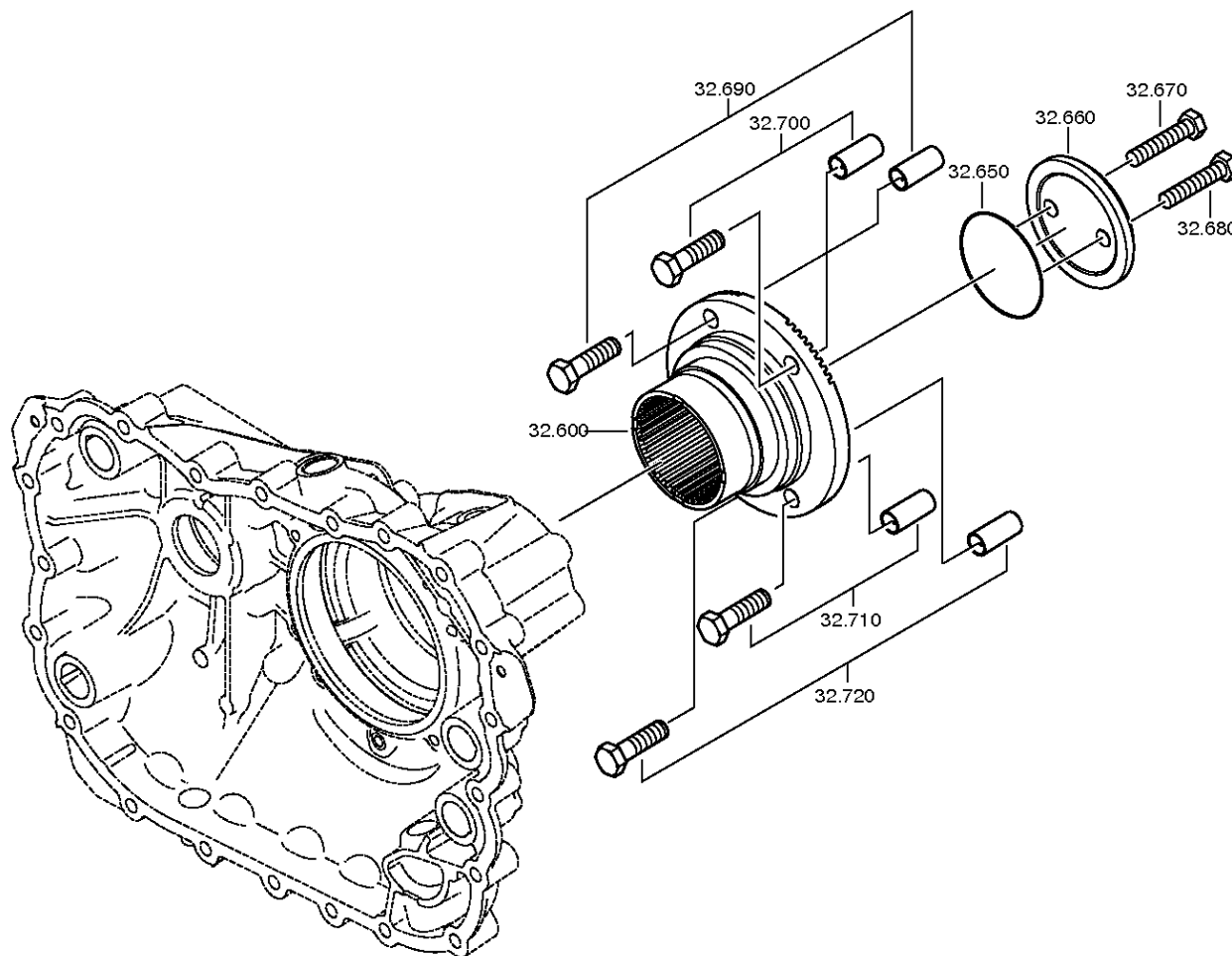
RC HOUSING

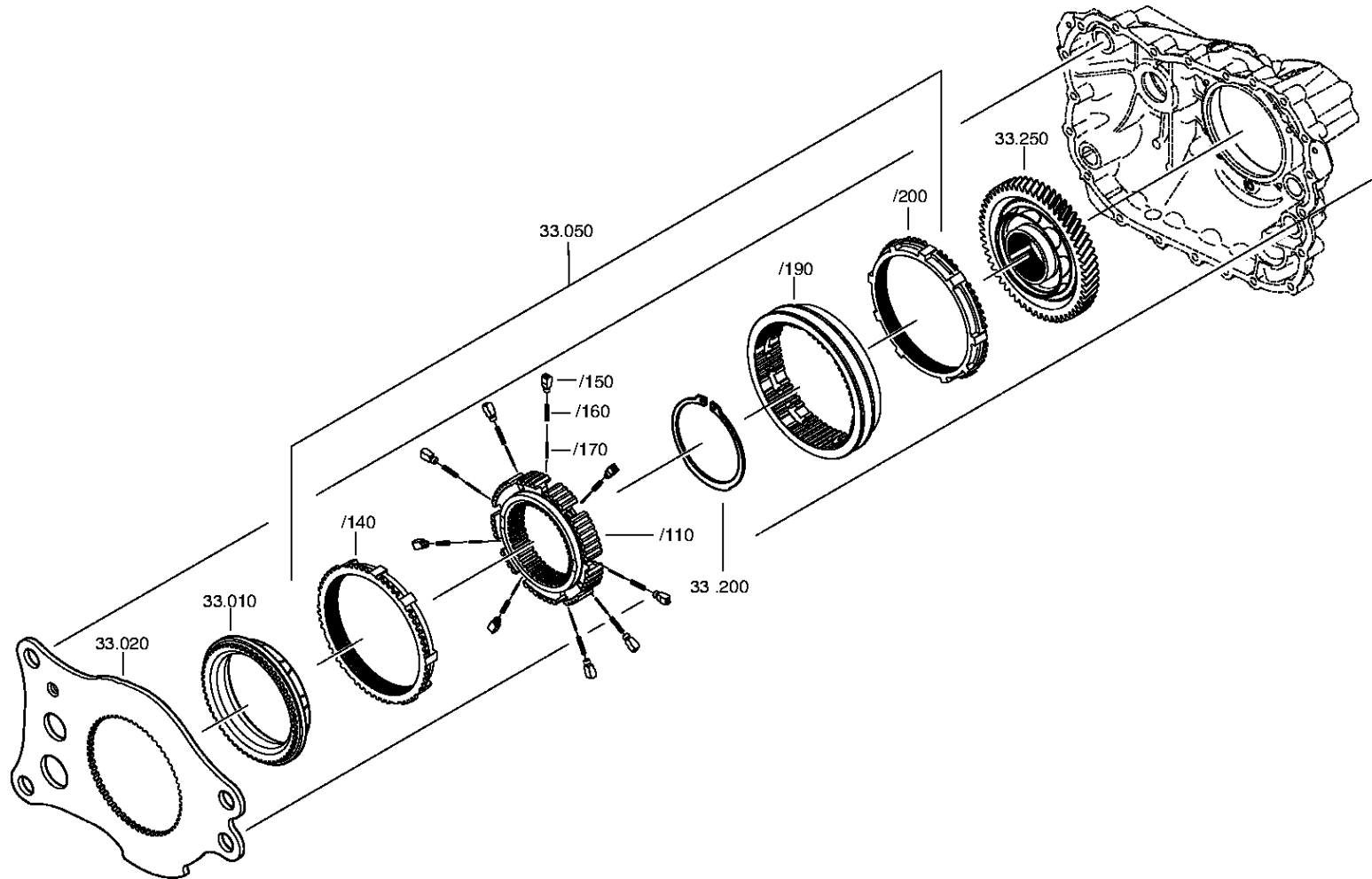


16 S 2531 TO / DAF TRUCKS
RC HOUSING









Plant

Page 1 from 2

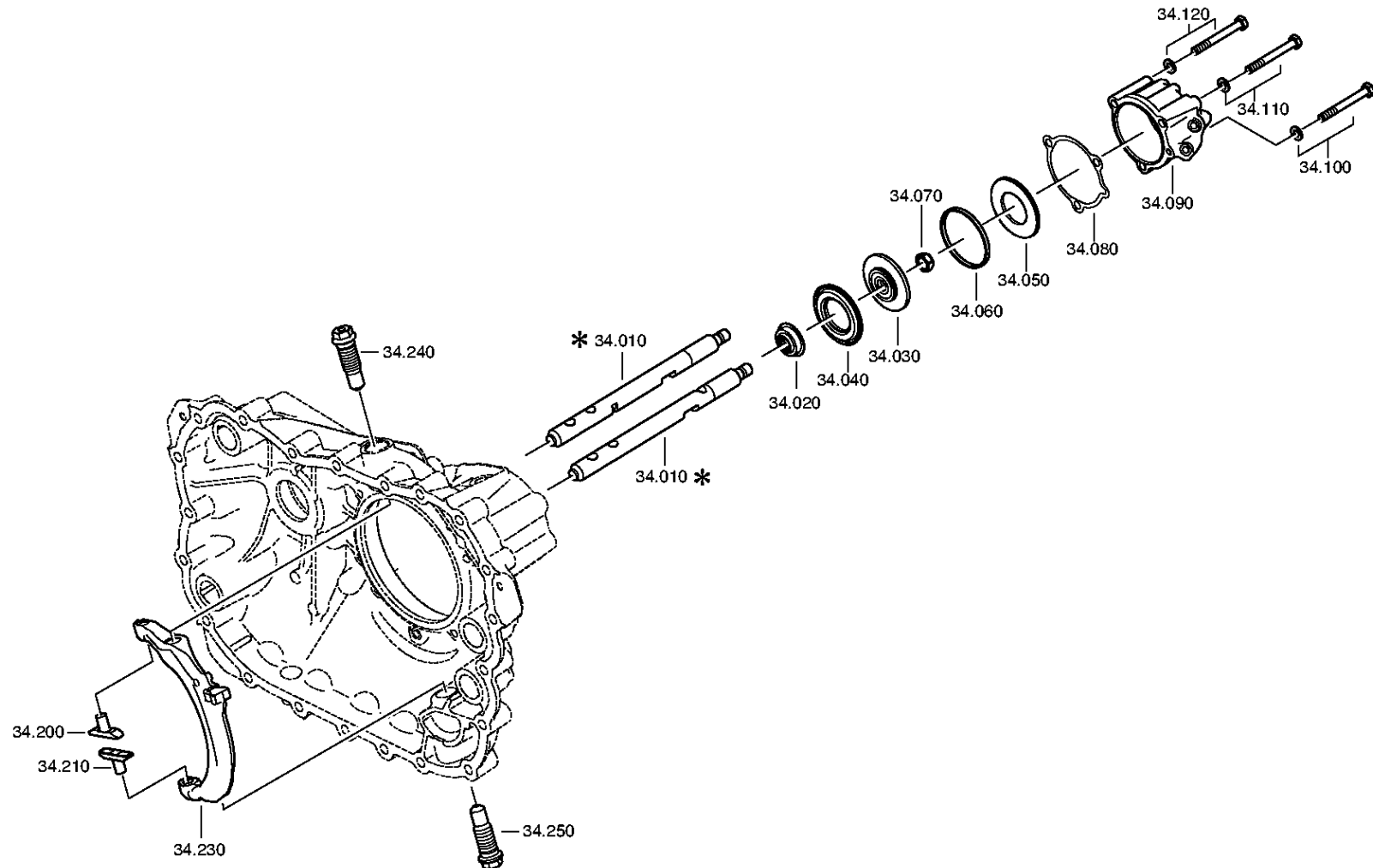
Material number: 1356.007.037

Plant: 161.46.01-1

GP SHIFT SYSTEM



16 S 2531 TO / DAF TRUCKS
GP SHIFT SYSTEM



Plant

Page 2 from 2

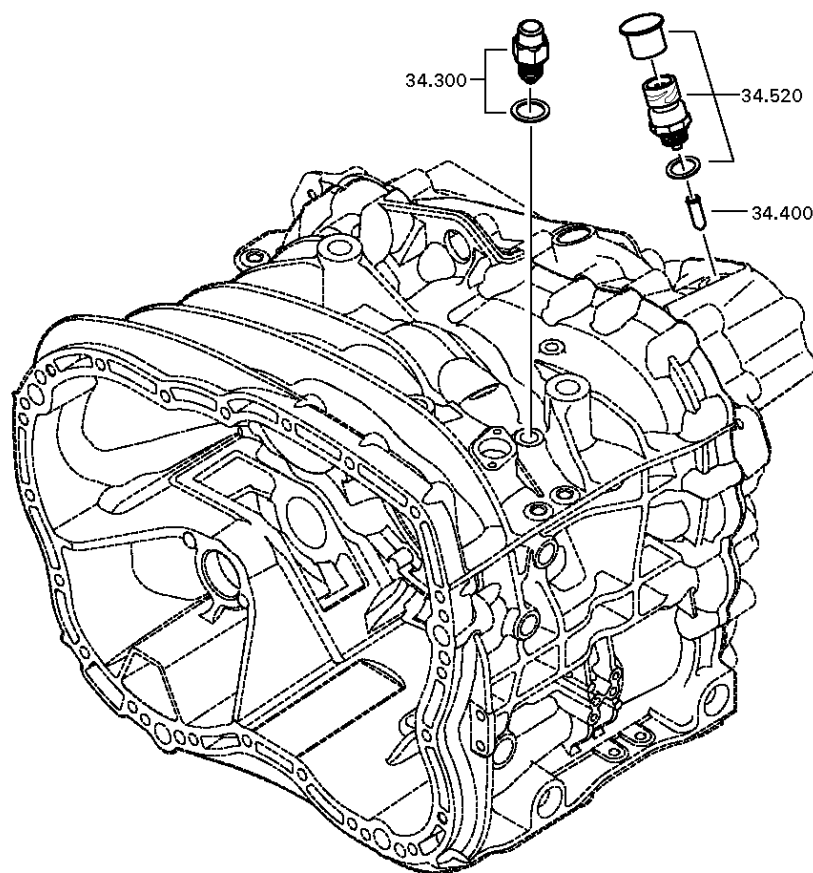
Material number: 1356.007.037

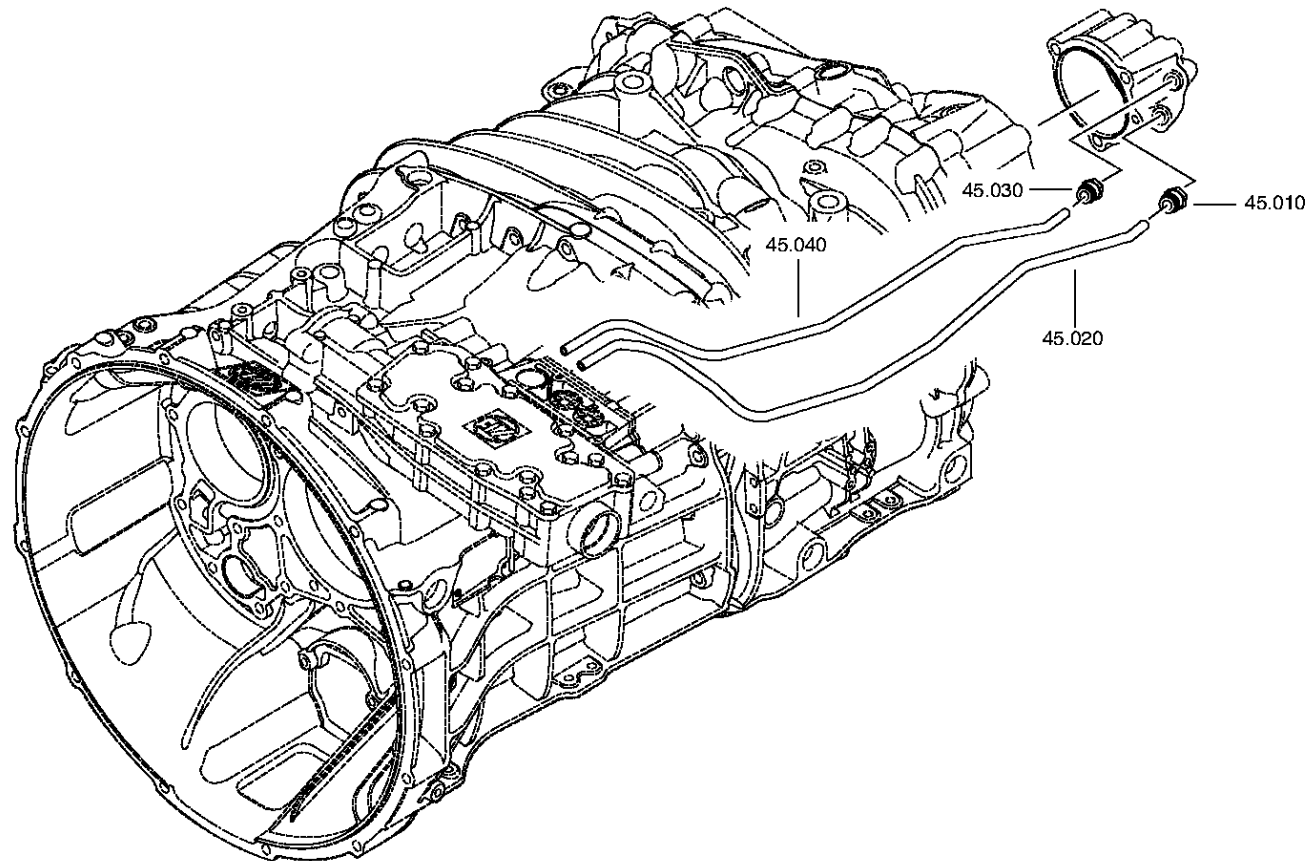
Plant: 161.46.40-1

GP SHIFT SYSTEM



16 S 2531 TO / DAF TRUCKS
GP SHIFT SYSTEM





Plant

Page 1 from 1

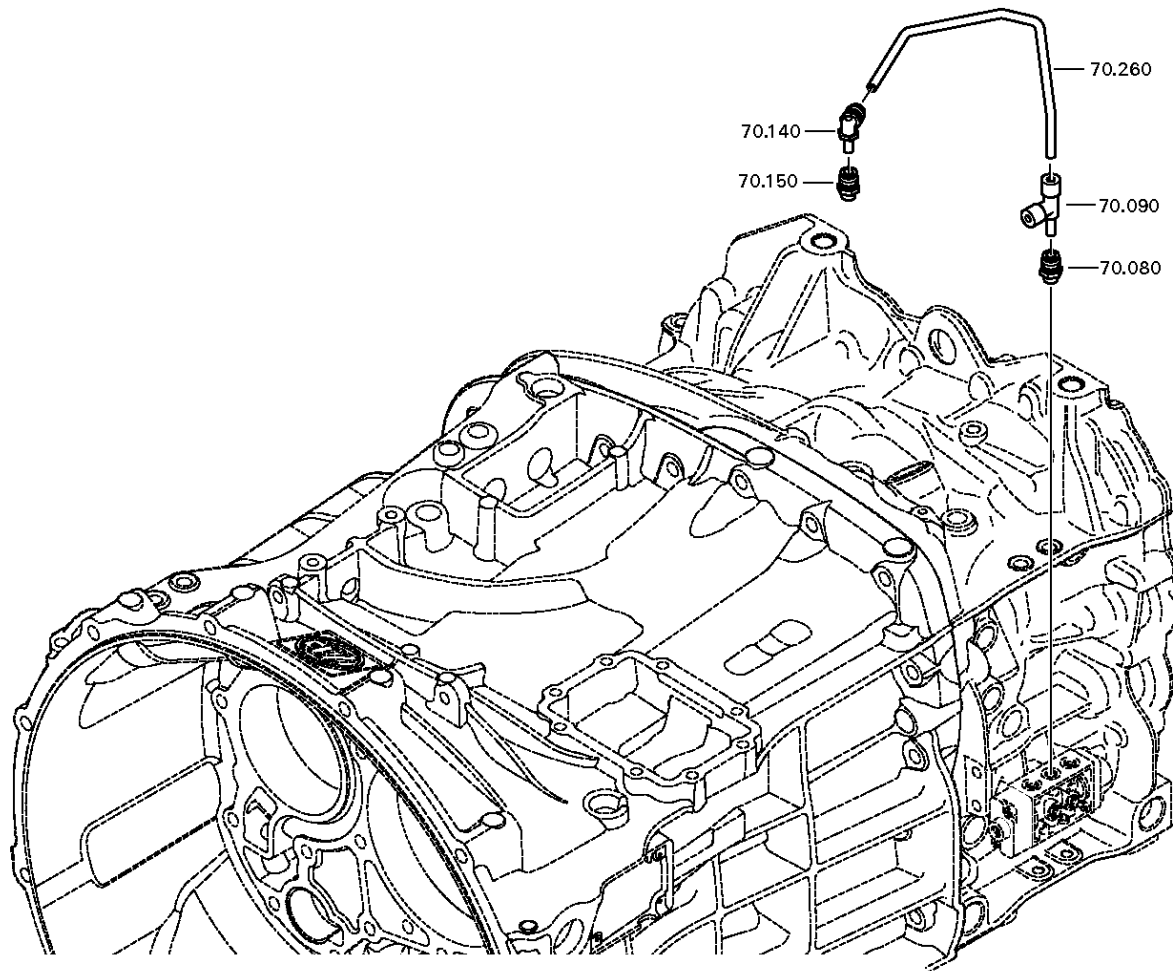
Material number: 1356.007.037

Plant: 161.70.07-1

Material-assembly-group-no: 1356.170.005



16 S 2531 TO / DAF TRUCKS
SHUT-OFF VALVE



Plant

Page 1 from 1

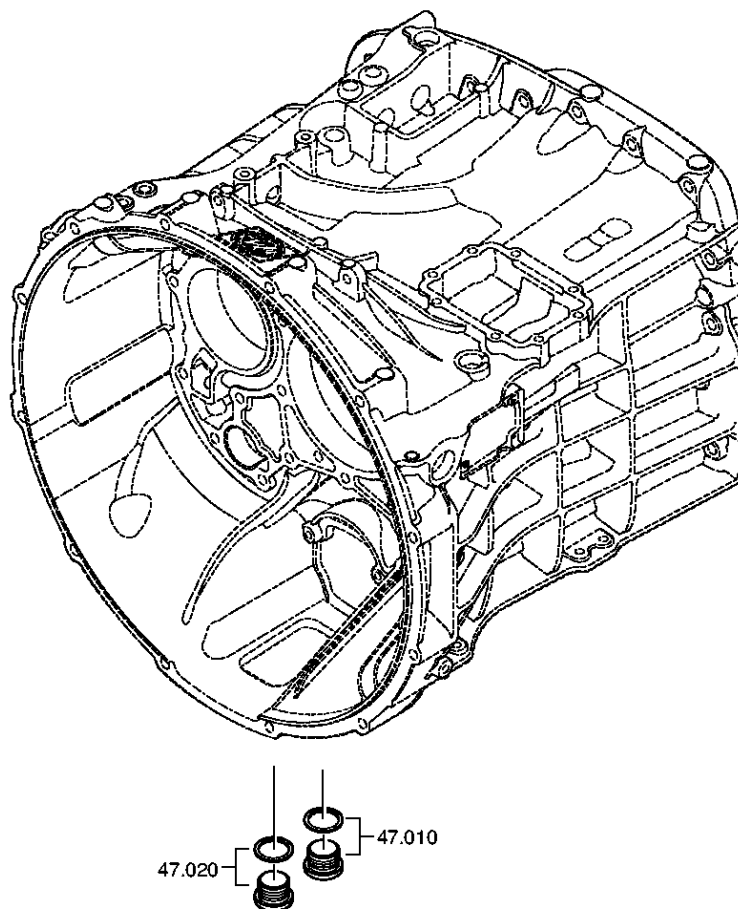
Material number: 1356.007.037

Plant: 161.90.08

Material-assembly-group-no: 1325.147.009



16 S 2531 TO / DAF TRUCKS
SCREW PLUG



Plant

Page 1 from 2

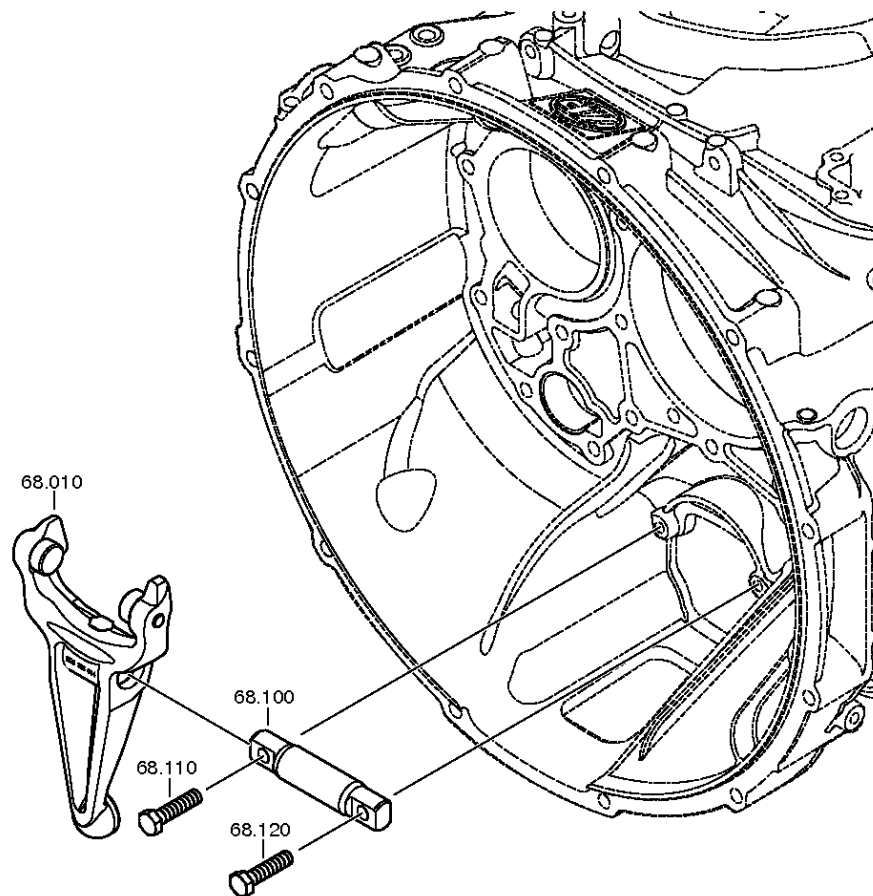
Material number: 1356.007.037

Plant: 161.93.25-1

CLUTCH RELEASE DEVICE



16 S 2531 TO / DAF TRUCKS
CLUTCH RELEASE DEVICE



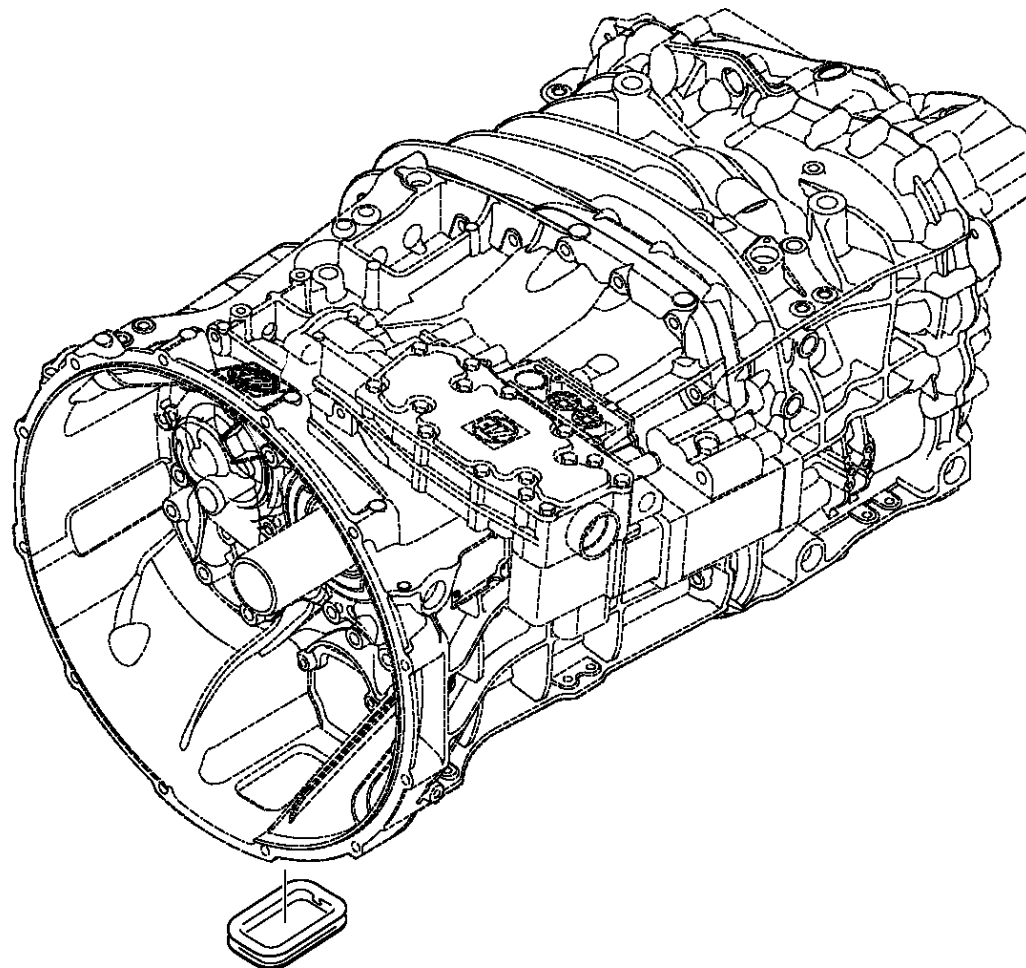
Material number: 1356.007.037

Plant: 161.93.17-1

CLUTCH RELEASE DEVICE



16 S 2531 TO / DAF TRUCKS
CLUTCH RELEASE DEVICE



Plant

Page 1 from 1

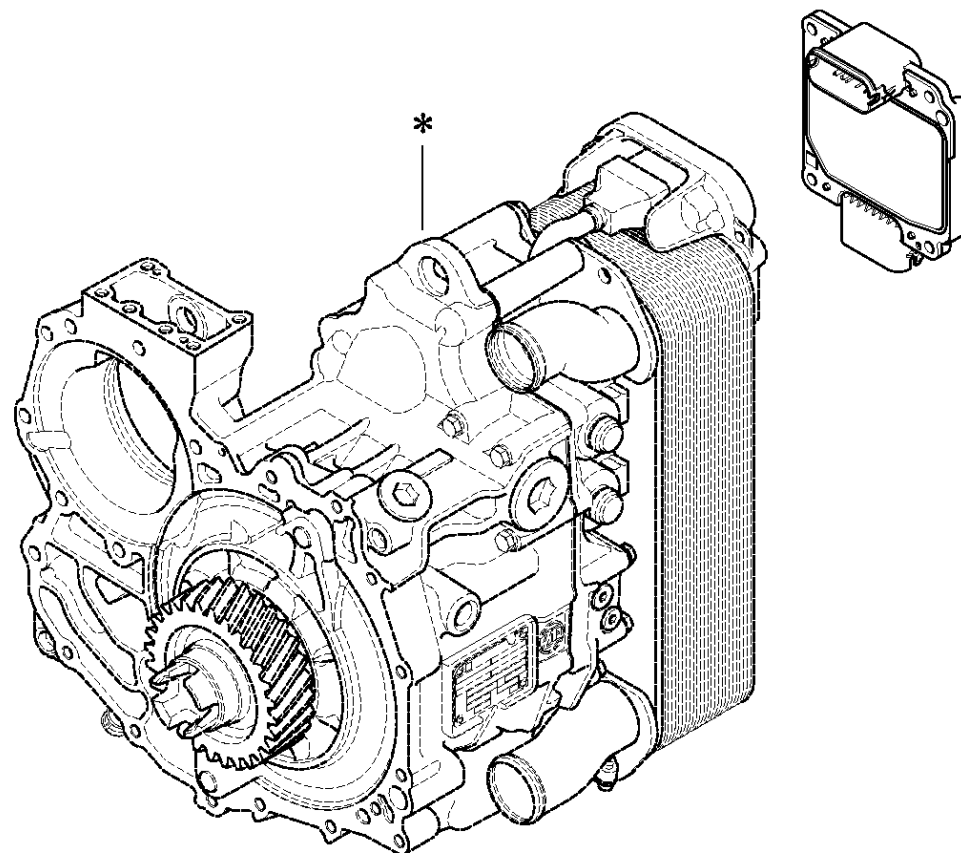
Material number: 6093.050.007

Plant: 155.C2.02-1

Material-assembly-group-no: 6070.004.002



16 S 2531 TO / DAF TRUCKS
EST 52



Plant

Page 1 from 1

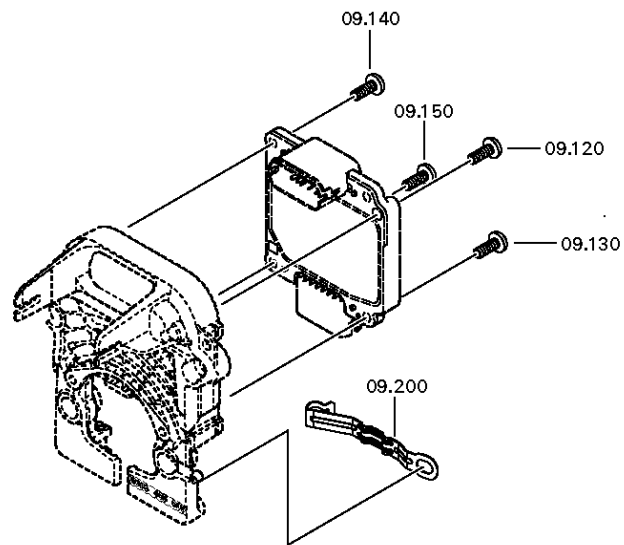
Material number: 6093.050.007

Plant: 155.E2.01-1

Material-assembly-group-no: 6093.109.800

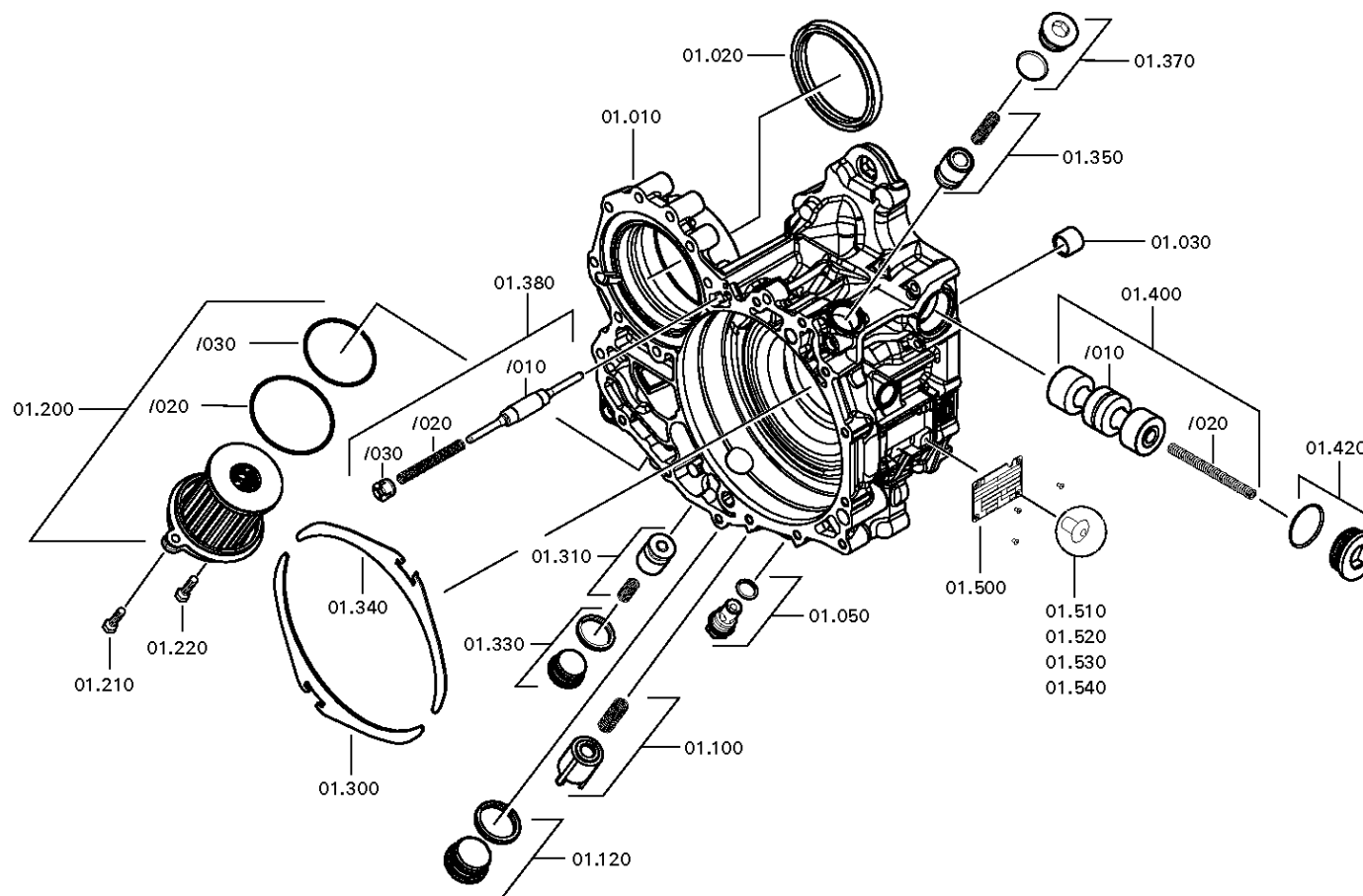
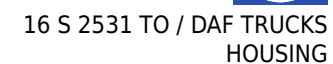


16 S 2531 TO / DAF TRUCKS
ANCHORAGE



Page 1 from 1

Plant: 155.01.10-1



Plant

Page 1 from 4

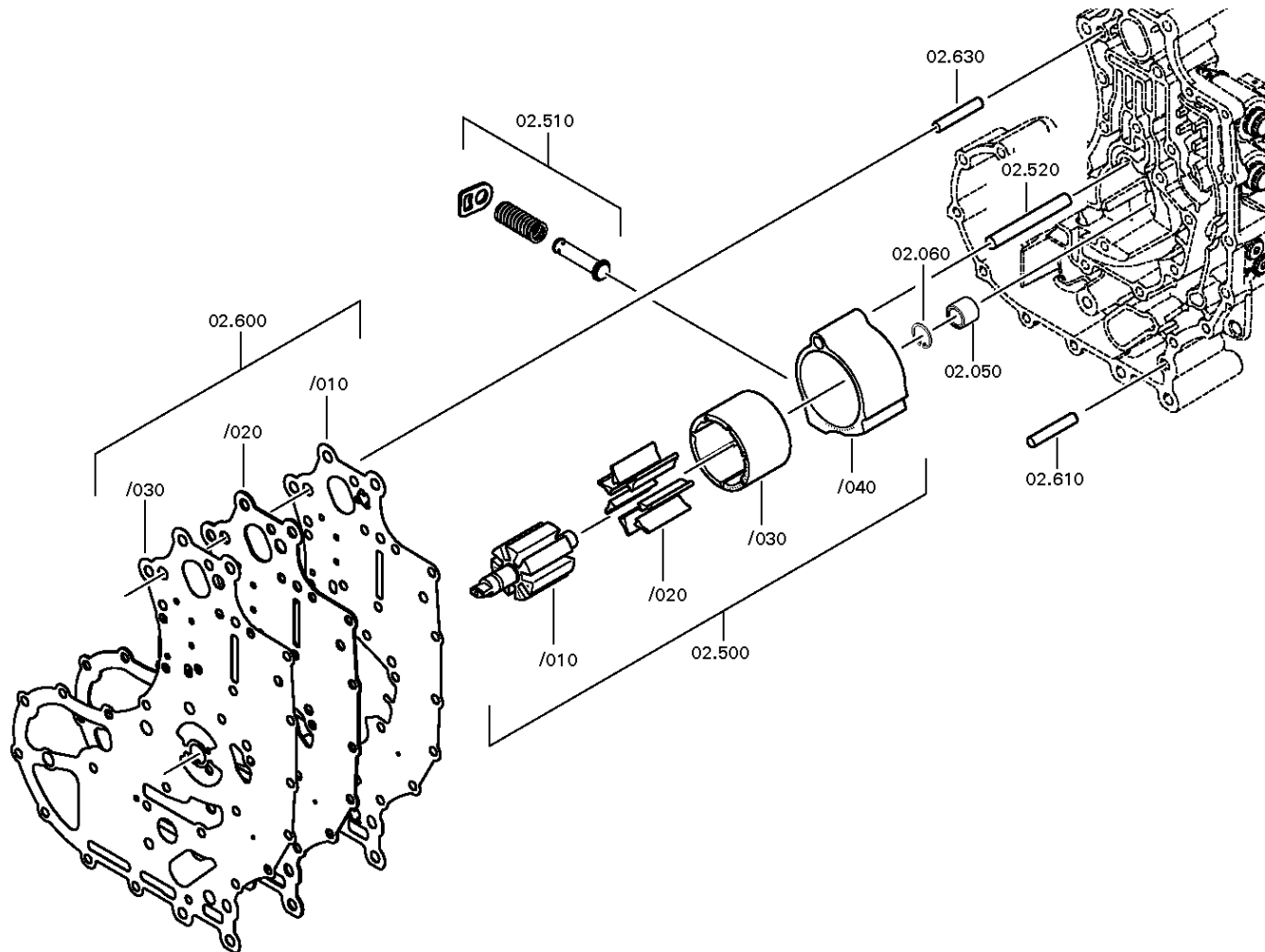
Material number: 6093.001.019

Plant: 155.02.01-1

CONTROL UNIT



16 S 2531 TO / DAF TRUCKS
CONTROL UNIT



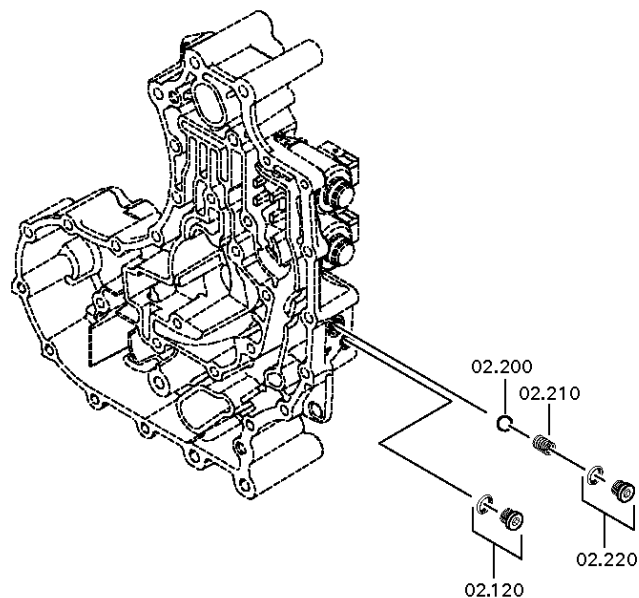
Material number: 6093.001.019

Plant: 155.02.01-2

CONTROL UNIT



16 S 2531 TO / DAF TRUCKS
CONTROL UNIT



Plant

Page 3 from 4

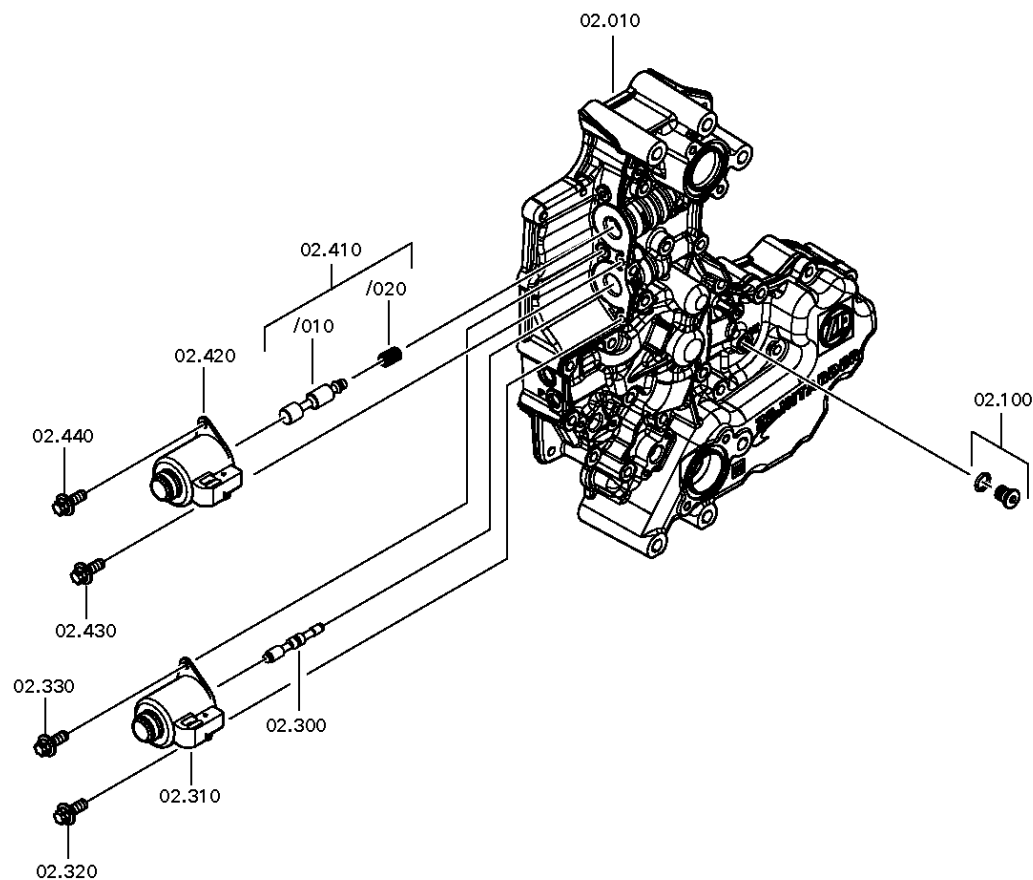
Material number: 6093.001.019

Plant: 155.02.01-3

CONTROL UNIT

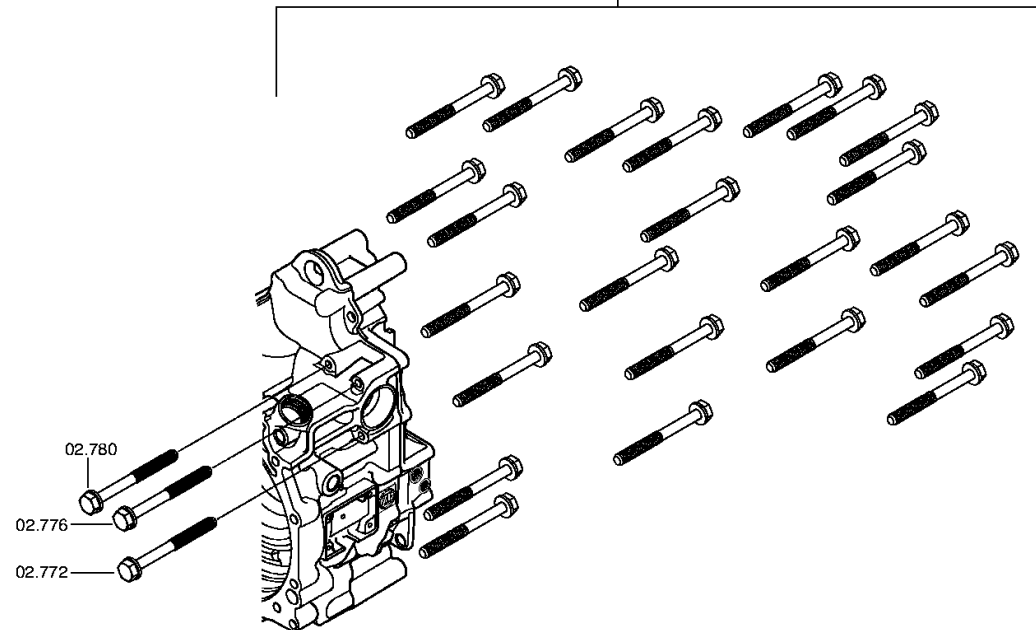


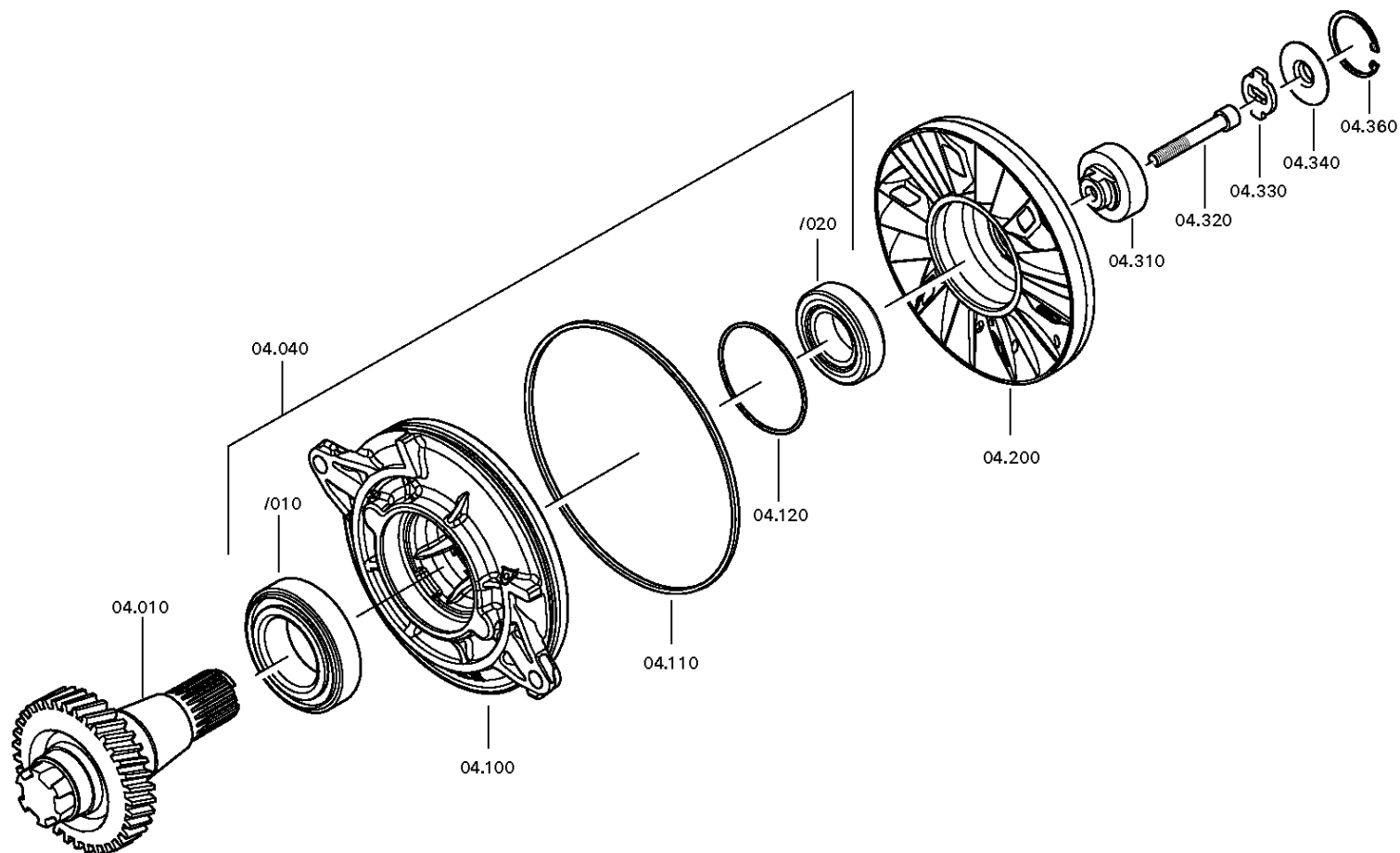
16 S 2531 TO / DAF TRUCKS
CONTROL UNIT



Bildtafel:
Figure: 155.02.80
Figure:
Figura:

02.700	02.716	02.732	02.748	02.764	02.792
02.704	02.720	02.736	02.752	02.768	02.796
02.708	02.724	02.740	02.756	02.784	02.800
02.712	02.728	02.744	02.760	02.788	02.804





Plant

Page 2 from 2

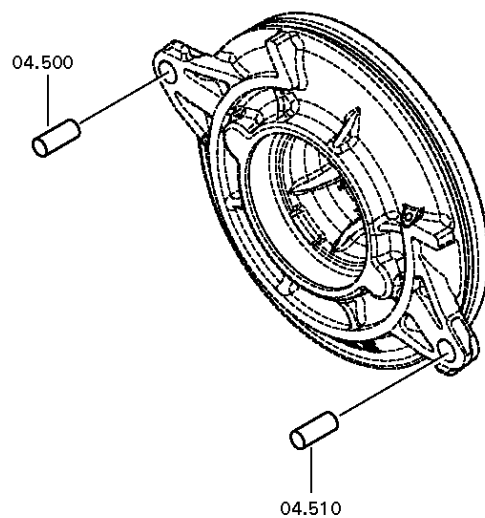
Material number: 6093.001.019

Plant: 155.04.80-1

RETARDER



16 S 2531 TO / DAF TRUCKS
RETARDER



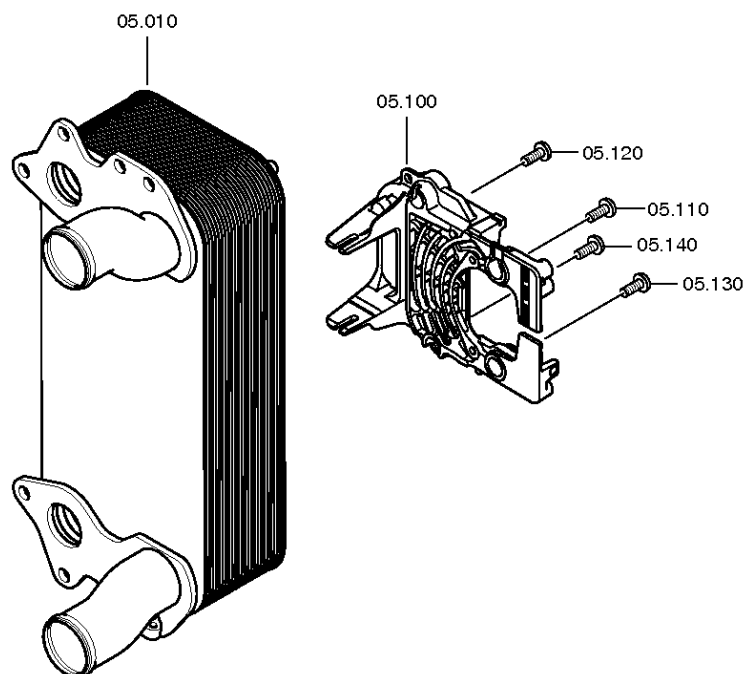
Material number: 6093.001.019

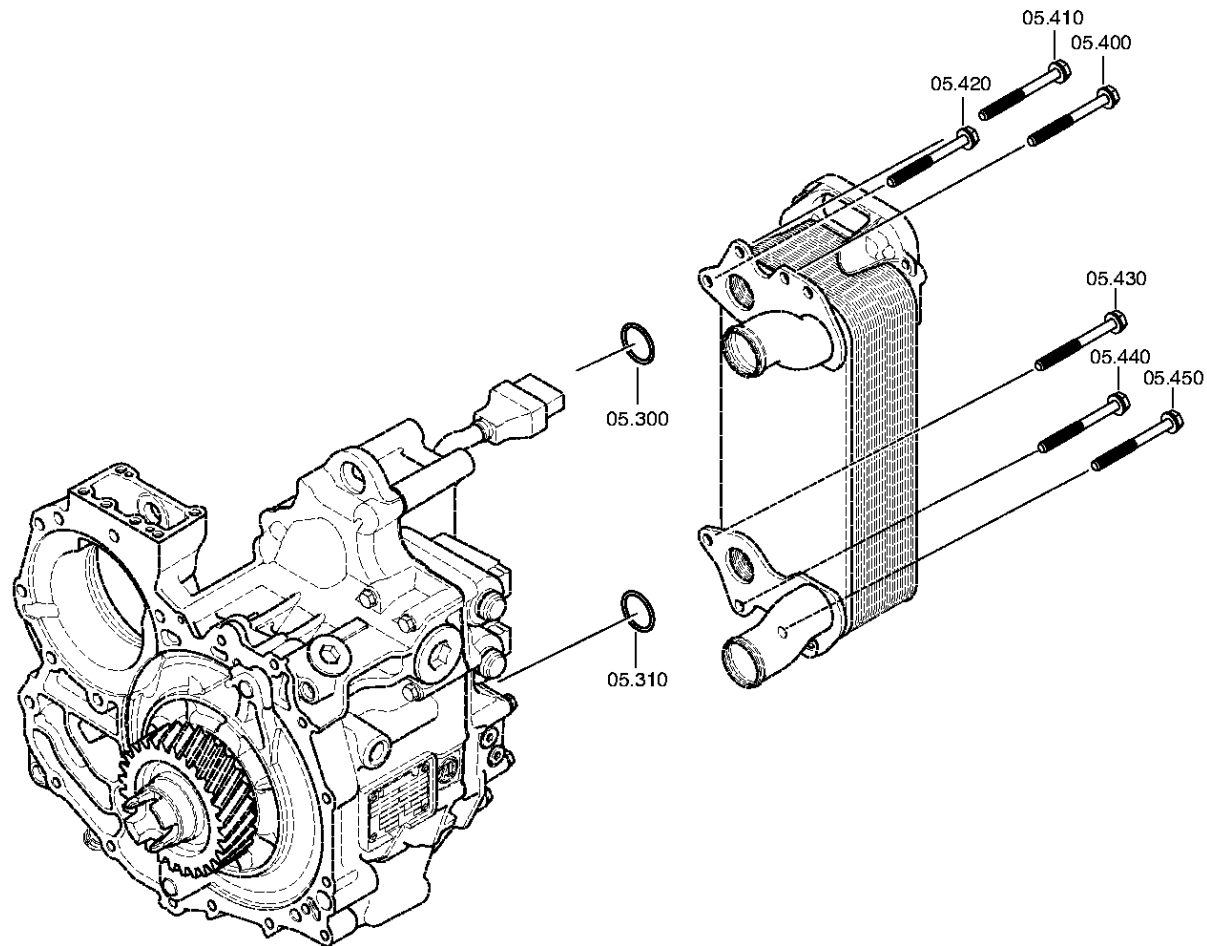
Plant: 155.05.03-1

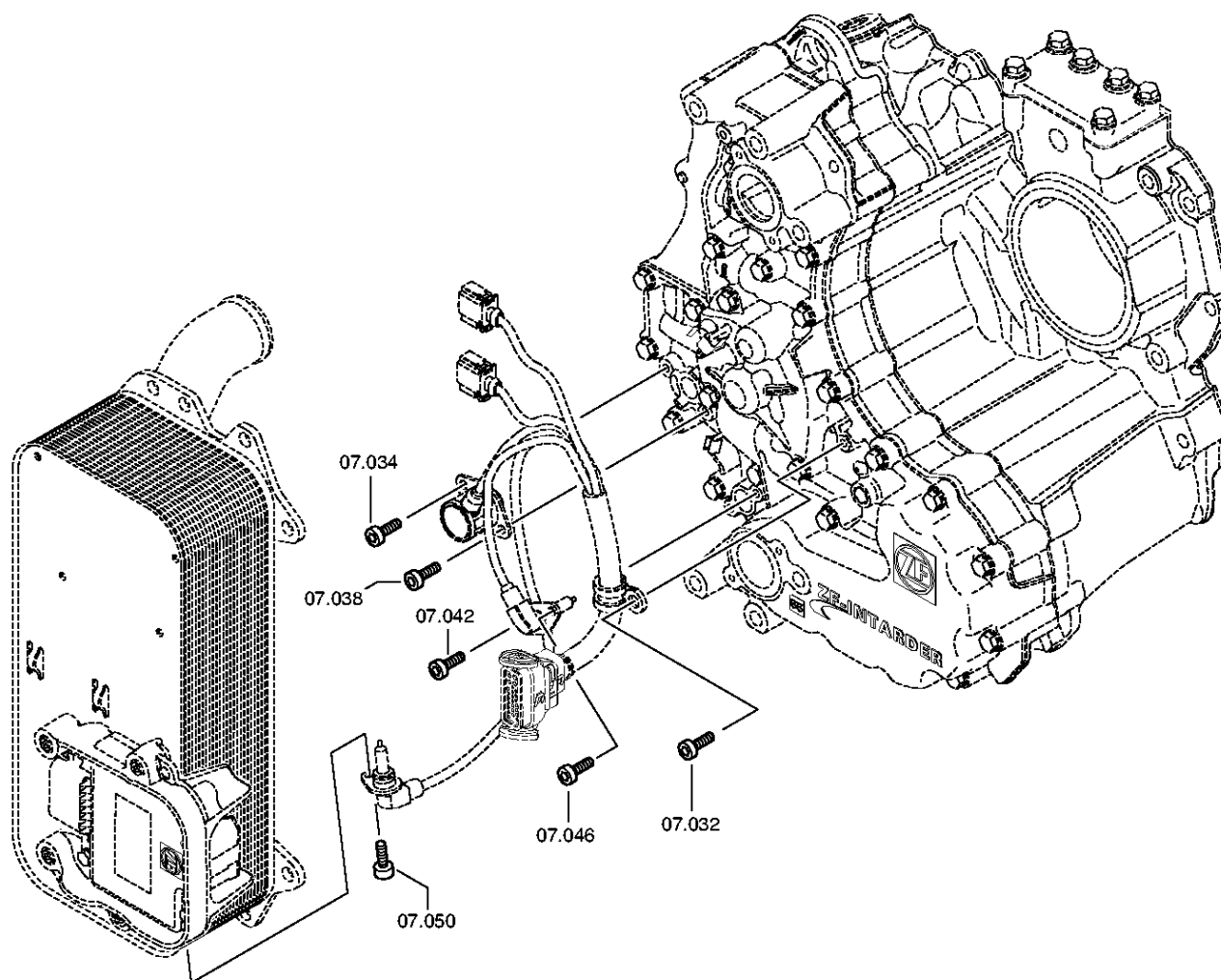
HEAT EXCHANGER



16 S 2531 TO / DAF TRUCKS
HEAT EXCHANGER







Plant

Page 2 from 3

Material number: 6093.001.019

Plant: 155.07.03-2

Material-assembly-group-no: 6093.107.003



16 S 2531 TO / DAF TRUCKS
WIRING

