

Spare Parts Catalog

6 S 500 TO

Material number: 1380.008.007

Current date: 13.09.2023

ZF Friedrichshafen AG

Hauptverwaltung

80038 Friedrichshafen

Deutschland

Telefon: +49 7541 77-0

Telefax: +49 7541 77-908000

zuständiges Werk:

www.zf.com

Notes relating to the spare parts catalog

Setup of the spare parts catalog

- Cover sheet
- Technical Cover (only in SDM print)
- Overview of figures
- Figure
- Associated parts list
- Next figure
- Associated parts list
- ...

Figure and parts list



Overview of figures

Bildtafel Figure	Sachnummer Product number	Benennung (Description)	Technische Info Technical info	Description (Benennung)	Menge Quantity	Einheit Unit
068.08.17	1316.170.001	AUSLEGER	WL	SHIFT TURRET	1	Stk
068.08.06	1316.170.031	DECKEL	WL*H-H *VM	COVER	1	Stk
068.08.14	1316.170.808	DECKEL	WL*AUSL+GEH*H-H*HF160N	COVER	1	Stk
08	1316.170.441	ANSCHLUSSTEILE	WL*NG-VORB*RG-SCHL*168N *BAJONETT	CONNECTING PARTS	1	Stk

The "gap" indicates that there is no separate graphics panel (poster) for this assembly
The parts of this assembly are shown with the same mid-section number on the figure

1 Positions and subpositions

Pos.	Sachnummer Product number	Benennung (Description)	Technische Info Technical info	Description (Benennung)	Menge Quantity	Einheit Unit
0370	1315.201.054	RUECKLAUFBOLZEN	KPL.16S151*SG*L= 79	REV.IDLER SHAFT	1	Stk
/0120	0631.329.293	SPANNSTIFT		SLOT. PIN	1	Stk

Positions marked with "/" are the individual items of a completion
For example: Position 0370 contains a centering pin with the position /0120

2 Combinations with standardized parts

Pos.	Sachnummer Product number	Benennung (Description)	Technische Info Technical info	Description (Benennung)	Menge Quantity	Einheit Unit
0630		VERSCHL.SCHR.		SCREW PLUG	1	Stk
	0636.302.067	VERSCHL.SCHR.		SCREW PLUG	1	Stk
	0634.801.249	DICHTRING	A 26 X 31	SEALING RING	1	Stk

The parts list shows the components included in the combination of standardized parts

3 Depiction of position/item number on the figure and in the parts list

01.620 - on the figure 01 relates to the assembly in which the position is included. Due to program-related reasons, it is shown on the figure.

0620 - in the parts list

Pos.	Sachnummer Product number	Benennung (Description)	Technische Info Technical info	Description (Benennung)	Menge Quantity	Einheit Unit
0620	0732.040.736	DRUCKFEDER		COMPRESSION SPRING	1	Stk

4 *-Positions

Positions marked with an * are optional i.e. inclusion in the parts list is not mandatory.
The following note is shown on the figure

je nach Stücklistenausführung
depending on spec. number
*
suivant la nomenclature
secondo la distinta base

5 Parts, dotted display

Parts with dotted display on the figure are only used for orientation of other parts

Technical Cover

Page 1 from 3

Material number: 1380.008.007

6 S 500 TO /

Pos.	Information	Amendment number
001	Use case -----	
002	Customer Beiqi Foton Motor Co.	
003	City BEIJING	
004	DUNS 65-467-6048	
005	Vehicle / Apparatus -----	
006	Sales Name BJ1099	
007	Manufacturer Beiqi Foton Motor Co.	
008	Engineering Name	
009	Product Use TRUCK	
010	Vehicle/Hardware Type TRACTOR	
011	SOP	
012	Engine	
013	Sales Designation ISF3.8s6154	
014	Manufacturer BFCEC	
015	Drivetrain type DIESEL	
016	Eng.Displ. 3800 cm3	
017	Cylinder 4	
018	Nom. power 115 kW	
019	RPM at nom. power 2600 1/min	
020	Nom. torque 500 Nm	
021	RPM at nom. torque 1200 1/min	
022	Classification use case -----	
024	MANUFACTURER, CLUTCH EXEDY	
027	TOTAL NUMBER OF WHEELS 4	
028	NUMBER OF DRIVING WHEELS 2	
029	DYNAMIC TYRE RADIUS 365 mm	
030	REAR AXLE RATIO 4.33	
034	PERMISS.GROSS VEHICLE WEIGHT 8.5 t	
040	Product description -----	
041	INSTALLATION POS TRANSMISSION HORIZONTAL LEFT	
042	TRANSMISSION ATTACHMENT FLANGE-MOUNTED	
043	RATIO, BOTTOM GEAR 6.198	
044	RATIO, TOP GEAR .78	

Technical Cover

Page 2 from 3

Material number: 1380.008.007

6 S 500 TO /

Pos.	Information	Amendment number
045	SET OF RATIOS OD	
046	RATIO, 1ST GEAR 6.198	
047	RATIO, 2ND GEAR 3.287	
048	RATIO, 3RD GEAR 2.025	
049	RATIO, 4TH GEAR 1.371	
050	RATIO, 5TH GEAR 1	
051	RATIO, 6TH GEAR .78	
052	RATIO, 1ST GEAR REVERSE 5.681	
053	DESIGN, SHIFT SYSTEM MECHANICAL	
054	POSITION, GEAR SHIFT SYSTEM	
055	VERSION ACTUATION SHIFT SYSTEM MECHANICAL	
056	DESIGN, SEPARATING CLUTCH FULL-SYNCHRONIZED	
057	REFERENCE LENGTH INPUT SHAFT 104 mm	
058	STANDARD TYPE INPUT SHAFT SAE	
059	STANDARDS IDENT.NO. INPUT SHAFT 10C	
060	NOMINAL DIAMETER INPUT SHAFT 1.5 in	
063	OUTSIDE DIAMETER INPUT SHAFT 25 mm	
064	TYPE FIT SPIGOTS INPUT SHAFT F7	
067	DIAMETER SHAFT OF INPUT SHAFT 25 mm	
071	NUMBER OF BORES,ENGINE CONN. 12	
072	BORE DIA, ENGINE CONNECTION 10.715 mm	
073	NOTE ON RELEASE BEARING FLANGE CENTRAL RELEASE	
074	DIAMETER, RELEASE FLANGE 75 mm	
075	TYPE FIT RELEASE BEARING FLA. E8	
076	DESIGN BEARING OUTPUT STANDARD SUSPENSION	
077	OUTER DIA. OUTPUT FLANGE RA 120 mm	
078	NO.OF SCREWS OUTPUT FLANGE RA 4	
079	NO.OF BORES OUTPUT FLANGE HA1 4	
080	BORE DIA. OUTPUT FLANGE RA 14.5 mm	
081	DIA. THREAD OUTPUT FL. SCR. RA M14	
086	DIMENSION SHIFT TURRET DIST. 201 mm	
087	MEAS. LOC. SHIFT TURRET DIST. SHIFT LEVER-LOCATION	
088	TYPE OF SHIFT CONTROL CONTROL CABLE	

Technical Cover

Page 3 from 3

Material number: 1380.008.007

6 S 500 TO /

Pos.	Information	Amendment number
089	RADIUS SELECTOR LEVER 70 mm	
090	SELECTOR LEVER POSITION D	
091	SELECTOR LEVER ANGLE GRAD	
092	RADIUS 1 SHIFT LEVER 95.000 mm	
099	LEVER POSITION SHIFTING OUTPUT C	
100	NOTE ON ANGLE CONNECTION PART ORDER-/INSTALL.DRAWING	
104	SELECTION PATTERN VARIANT INSTALLATION DRAWING	
105	SWITCH, REVERSE GEAR y	
107	DESIGN, RG (REV.GEAR) SWITCH CLOSING	
108	PROT.CAP SWITCH, REVERSE GEAR n	
109	DESIGN, CONNECTION, RG SWITCH DIN BAYONET	
117	TYPE OF RELEASE MECHANISM MECHANICAL	
120	VERSION OF CLUTCH HOUSING INTEGRATED	
121	ASSEMBLY POS. CLUTCH CYLINDER 9	
126	THREAD DIA. MTG BOLT SUSPENSION M12	
130	WRENCH SIZE, RELEASE FORK 74.9 mm	
133	DIAMETER RELEASE BEARING 57.2 mm	
139	OIL CAPACITY, GEARBOX 4.8 dm ³	
141	OIL GRADE PERMISSIBLE ACC. TO TE-ML02	
143	COLOR WITHOUT GROOVE	
146	PAINTING, ZF STANDARD	
147	CODING OUTER CONSERVATION KA2	
148	CODING INNER CONSERVATION KI1	
149	SCOPE OUTER CONSERVATION T	
150	CONSERVATION SPECIFICATION ZFN 916	
156	Alias ID -----	
157	Beiqi Foton Motor Co. L117100000001	

Assembly group overview

Page 1 from 1

Material number: 1380.008.007

6 S 500 TO /

Picture	Pos.	Material number	Name	Quantity	Amend. no.	Techn. Info.
267.001.046-1	110	1380.101.021	CLUTCH HOUSING	1		
267.001.082-1	120	1380.101.813	OUTPUT HOUSING	1		
267.001.046-1	130	1380.101.413	CONNECTING PARTS	1		
267.02.01-1	10	1380.102.005	INPUT SHAFT	1		
267.002.080-1	150	1380.102.803	GUIDE TUBE	1		
267.03.01-1	30	1380.103.004	COUNTERSHAFT	1		
267.04.80-1	20	1381.104.009	MAIN SHAFT	1		
267.04.80-1	210	1380.104.814	OUTPUT FLANGE	1		
267.05.01-1	220	1380.105.004	RETURN	1		
267.06.03-1	230	1381.106.007	SHIFT SYSTEM	1		
267.07.03-1	10	1380.107.038	GEAR SHIFT HOUSING	1		
	20	1380.107.064	GEARSHIFT SHAFT	1		
267.07.43-1	30	1380.107.422	SWITCH	1		
	310	1380.107.063	GEARSHIFT SHAFT	1		
267.07.40-1	320	1380.107.001	GEAR SHIFT HOUSING	1		
267.93.01-1	340	1380.168.017	CLUTCH RELEASE DEVICE	1		

Picture

Page 1 from 2

Material number: 1380.008.007

Picture: 267.001.046-1

CLUTCH HOUSING

6 S 500 TO /
CLUTCH HOUSING

There is presently no picture available for this parts list/ assembly.

Parts list

Page 1 from 2

Material number: 1380.008.007

Picture: 267.001.046-1

Material-assembly-group-no: 1380.101.021

6 S 500 TO /

	Pos.	Material number	Customer material	Name	Quantity	ME	Amend. no.	Techn. Info.	Rep kit	Alternative material
	10	1380.201.004		CLUTCH HOUSING	1			BODA B POINT HOUSING		
	20	1335.301.023		CYLINDRICAL PIN	1					
	30	1335.301.023		CYLINDRICAL PIN	1					
	40	---		SHAFT SEAL	1			48X65X9		
	---	0769.175.383		SHAFT SEAL	1					
	50	0769.176.390		GASKET	1					
	60	1324.301.165		COVER	1					
	70	0636.100.403		HEXAGON SCREW	1			M10X20		
	80	0636.100.403		HEXAGON SCREW	1			M10X20		
	90	0636.100.403		HEXAGON SCREW	1			M10X20		
	100	0636.100.403		HEXAGON SCREW	1			M10X20		
	110	0636.100.403		HEXAGON SCREW	1			M10X20		
	120	0636.100.403		HEXAGON SCREW	1			M10X20		
	130	---		SCREW PLUG	1			38N.M*DICHTRING M22X1,5		
	---	1322.301.032		SCREW PLUG	1			M22X1,5		
	---	0634.801.173		SEALING RING	1			22X27		
	140	0730.365.814		TYPE PLATE	1			FZTC (LCV)		
	150	0666.690.171		ADHESIVE	0,200					
	160	0769.172.995		COVER	1					
	170	---		HEXAGON SCREW	1			M5X10		
	---	0636.100.561		HEXAGON SCREW	1			M5X10		
	---	0630.001.140		WASHER	1					
	180	---		HEXAGON SCREW	1			M5X10		
	---	0636.100.561		HEXAGON SCREW	1			M5X10		
	---	0630.001.140		WASHER	1					
	190	---		SCREW PLUG	1			M22X1,5		
	---	0736.300.222		SCREW PLUG	1			M22X1,5		
	---	0634.801.173		SEALING RING	1			22X27		
	200	1381.301.014		OUTPUT HOUSING	1			6S		
	206	---		SEALING CAP	1					
	---	0630.100.029		SEALING CAP	1		Z00007166010			
	208	0501.220.422		CAP	1					
	210	---		SHAFT SEAL	1			64,0X79,0X13,5		
	---	0769.175.389		SHAFT SEAL	1					

Parts list






















Page 2 from 2

Material number: 1380.008.007

Picture: 267.001.046-1

Material-assembly-group-no: 1380.101.021

6 S 500 TO /

	Pos.	Material number	Customer material	Name	Quantity	ME	Amend. no.	Techn. Info.	Rep kit	Alternative material
	220	0666.790.033		SEAL.COMPOUND	1					
	230	0636.103.701		HEXAGON SCREW	1			M8X53		
	240	0636.103.701		HEXAGON SCREW	1			M8X53		
	250	0636.103.701		HEXAGON SCREW	1			M8X53		
	260	0636.103.701		HEXAGON SCREW	1			M8X53		
	270	0636.103.701		HEXAGON SCREW	1			M8X53		
	280	0636.103.701		HEXAGON SCREW	1			M8X53		
	290	0636.103.701		HEXAGON SCREW	1			M8X53		
	300	0636.103.701		HEXAGON SCREW	1			M8X53		
	310	0636.103.701		HEXAGON SCREW	1			M8X53		
	320	0636.103.701		HEXAGON SCREW	1			M8X53		
	330	0636.103.701		HEXAGON SCREW	1			M8X53		
	340	0636.103.701		HEXAGON SCREW	1			M8X53		
	350	0636.103.701		HEXAGON SCREW	1			M8X53		
	360	0636.103.701		HEXAGON SCREW	1			M8X53		
	370	0636.103.701		HEXAGON SCREW	1			M8X53		
	380	0636.103.701		HEXAGON SCREW	1			M8X53		
	390	0636.103.701		HEXAGON SCREW	1			M8X53		
	500	---		SWITCH	1					
	---	1380.307.044		SWITCH	1					
	510	1295.212.006		PIN	1			KPL.		
	512	0750.199.019		GREASE	1			KLASSE A		
	540	0637.510.012		PLUG	1					

Picture

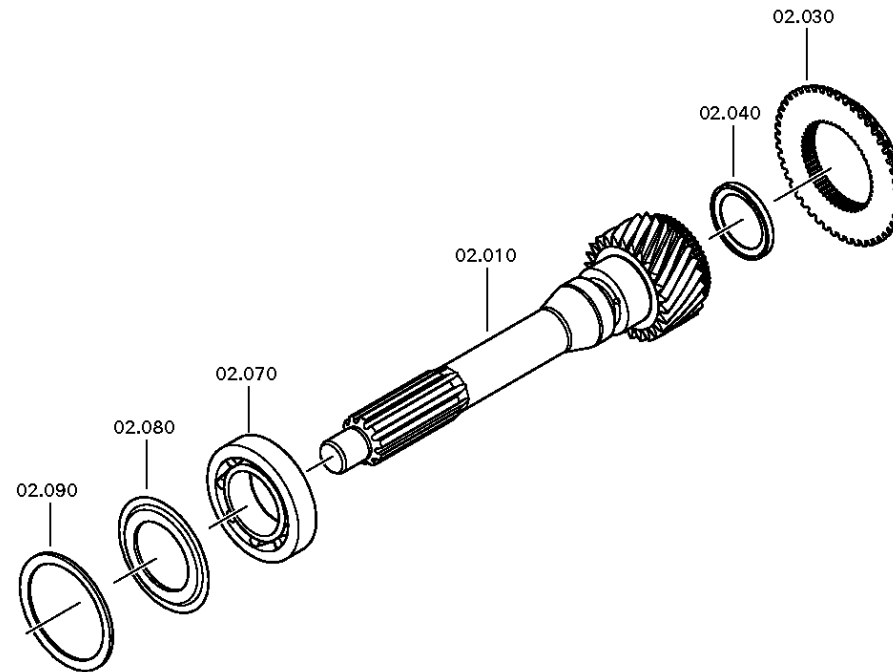
Page 1 from 2

Material number: 1380.008.007

Picture: 267.02.01-1

INPUT SHAFT

6 S 500 TO /
INPUT SHAFT



Picture

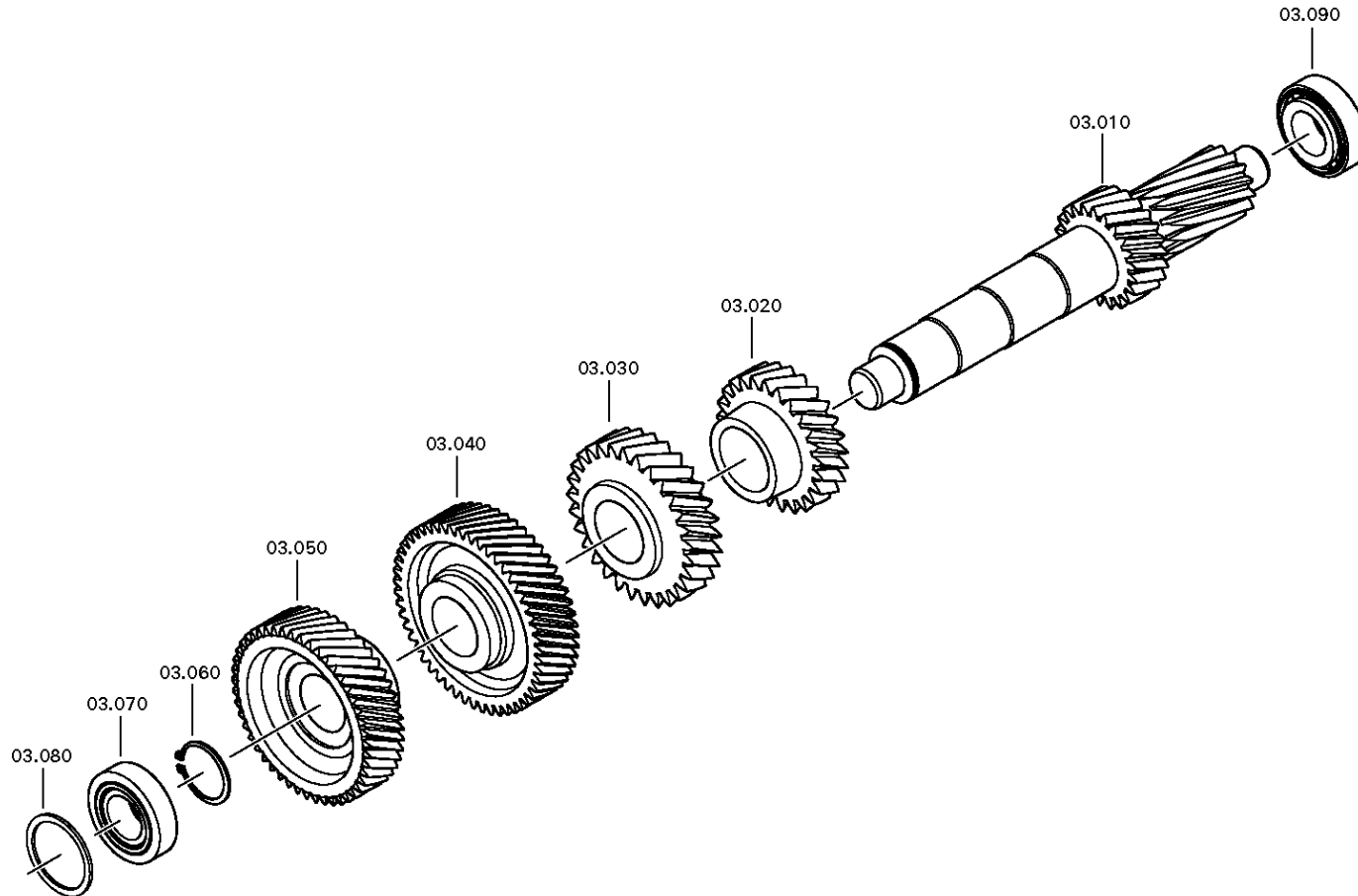
Page 1 from 1

Material number: 1380.008.007

Picture: 267.03.01-1

Material-assembly-group-no: 1380.103.004

6 S 500 TO /
COUNTERSHAFT



Picture

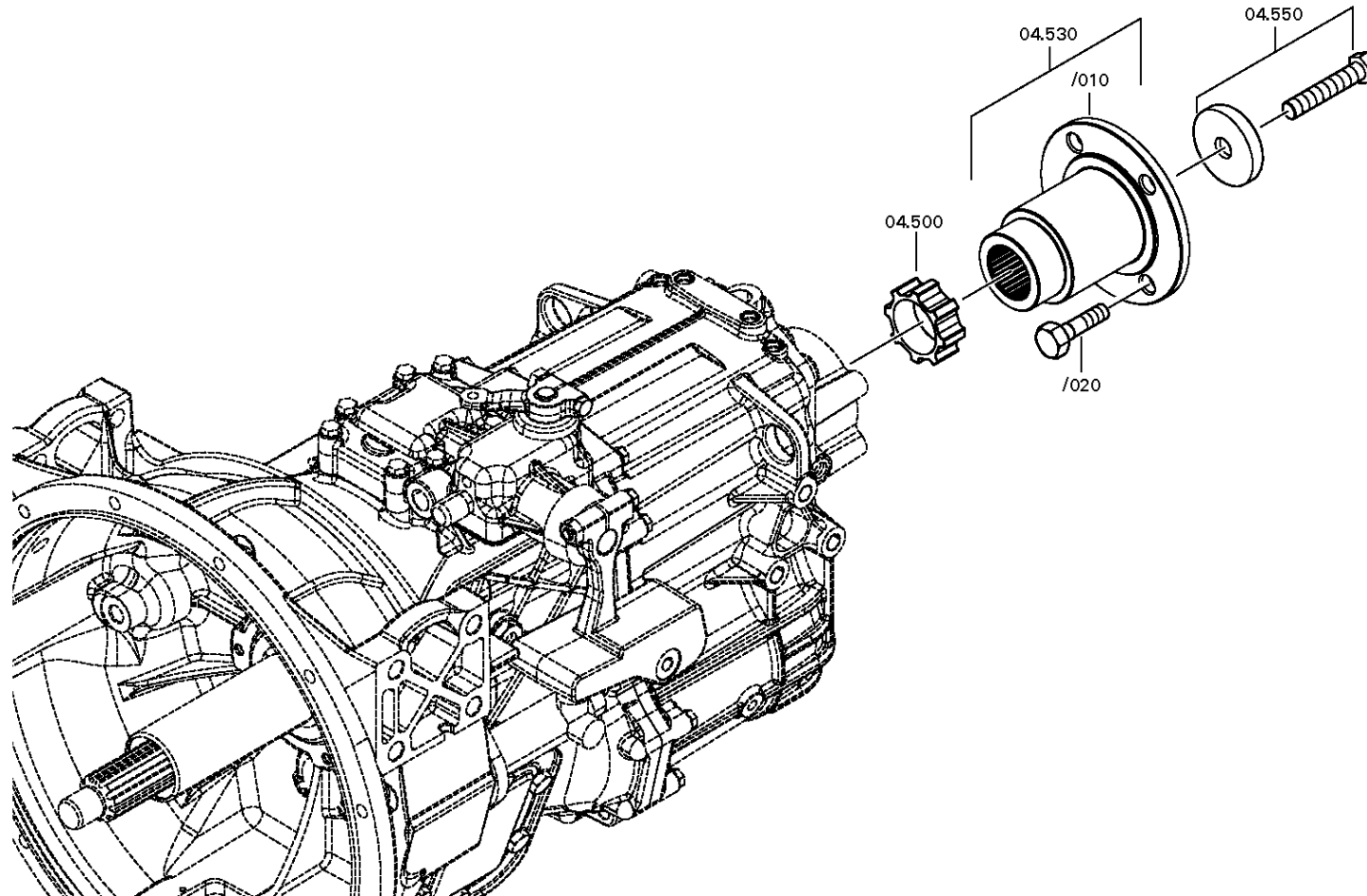
Page 1 from 1

Material number: 1380.008.007

Picture: 267.04.80-1

MAIN SHAFT

6 S 500 TO /
MAIN SHAFT



Picture

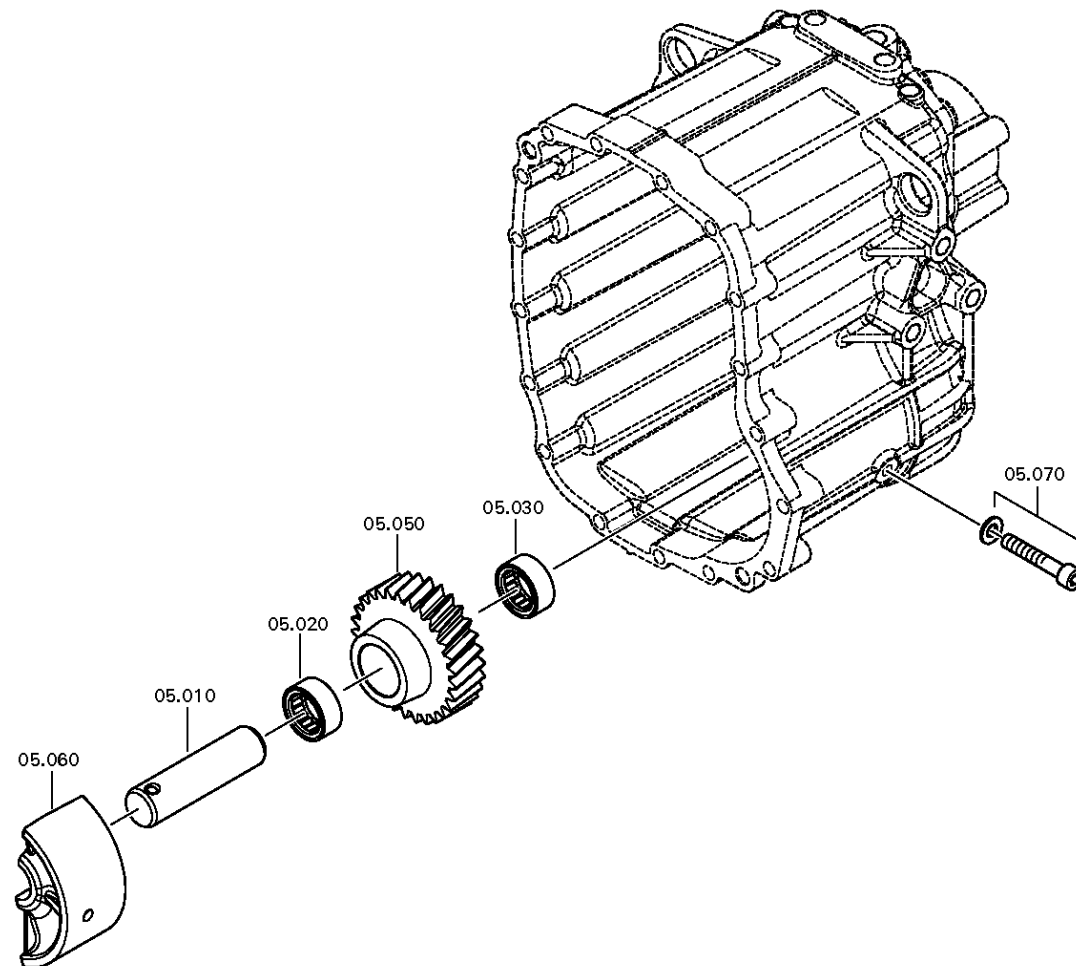
Page 1 from 1

Material number: 1380.008.007

Picture: 267.05.01-1

Material-assembly-group-no: 1380.105.004

6 S 500 TO /
RETURN



Picture

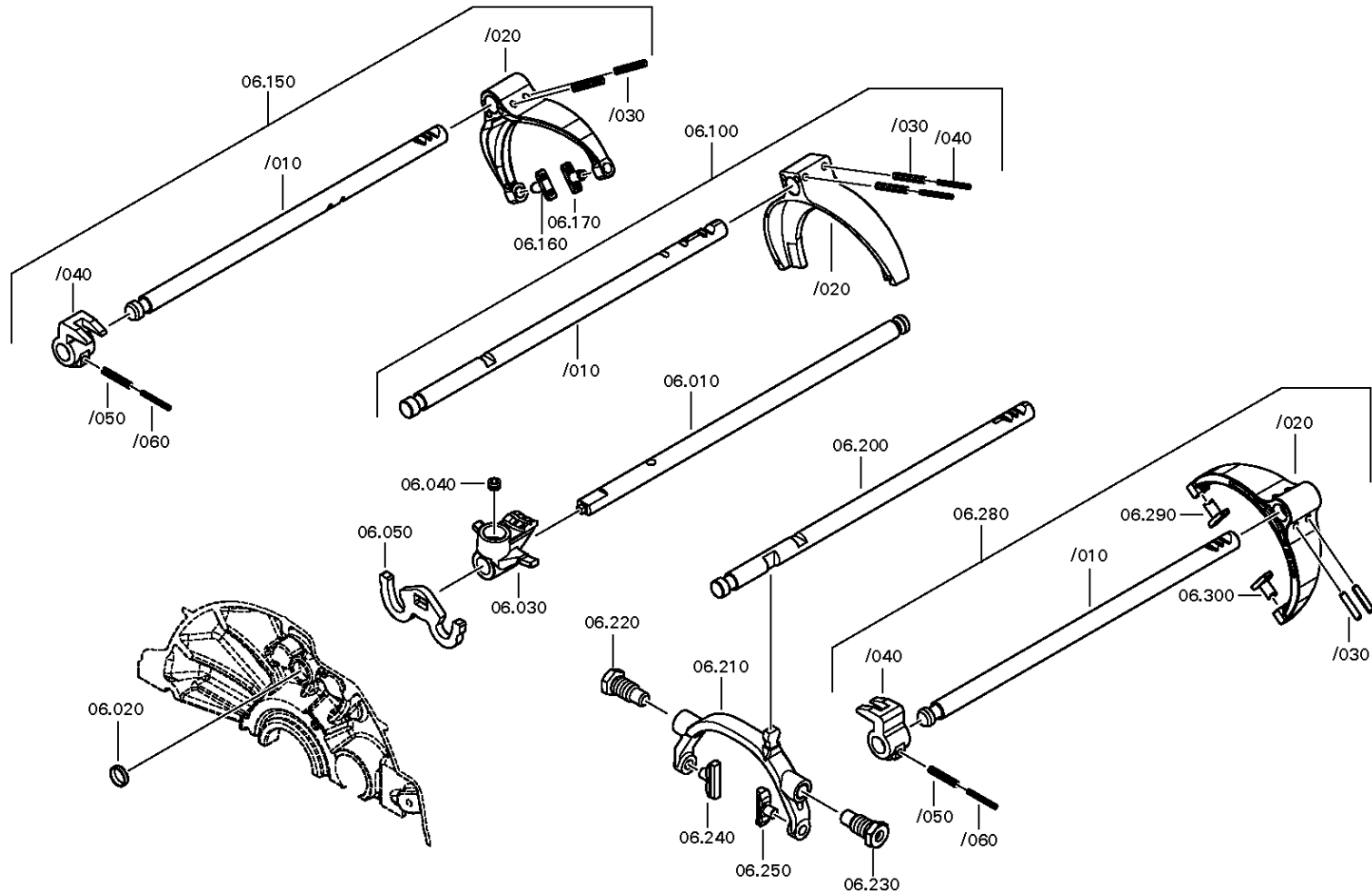
Page 1 from 2

Material number: 1380.008.007

Picture: 267.06.03-1

Material-assembly-group-no: 1381.106.007

6 S 500 TO /
SHIFT SYSTEM



Picture

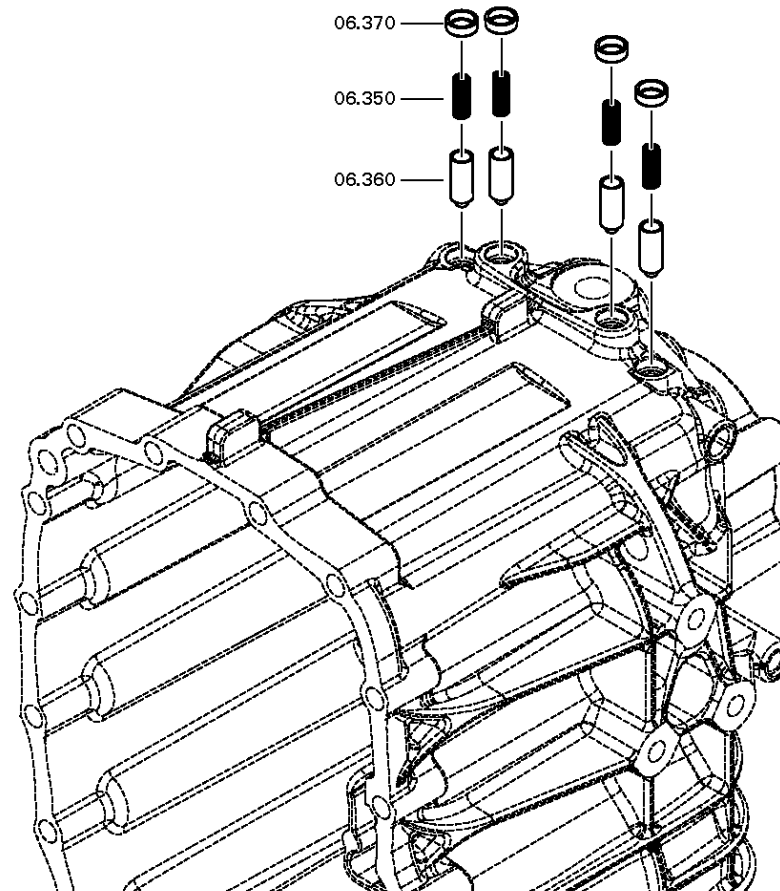
Page 2 from 2

Material number: 1380.008.007

Picture: 267.06.03-2

Material-assembly-group-no: 1381.106.007

6 S 500 TO /
SHIFT SYSTEM



Picture

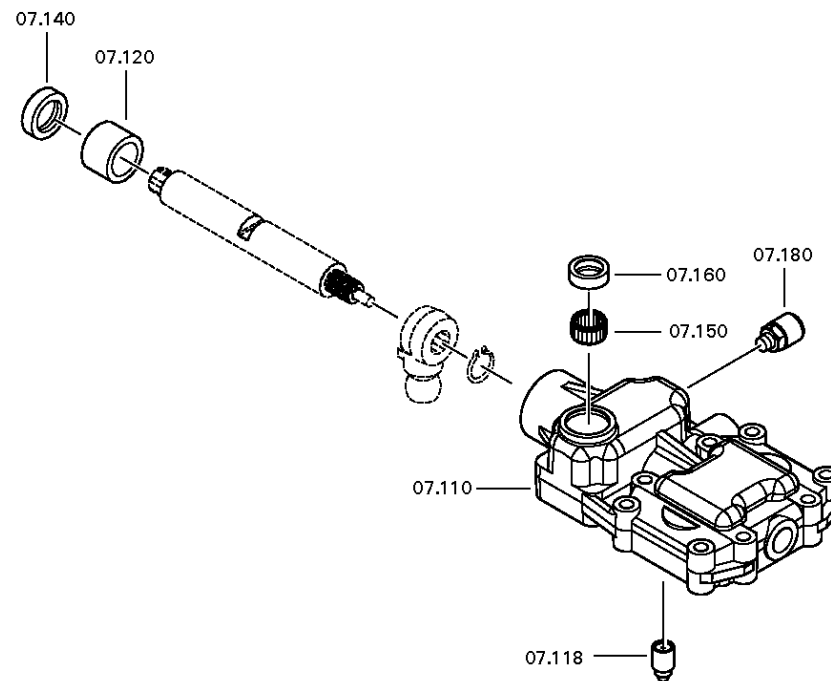
Page 1 from 3

Material number: 1380.008.007

Picture: 267.07.03-1

GEAR SHIFT HOUSING

6 S 500 TO /
GEAR SHIFT HOUSING



Picture

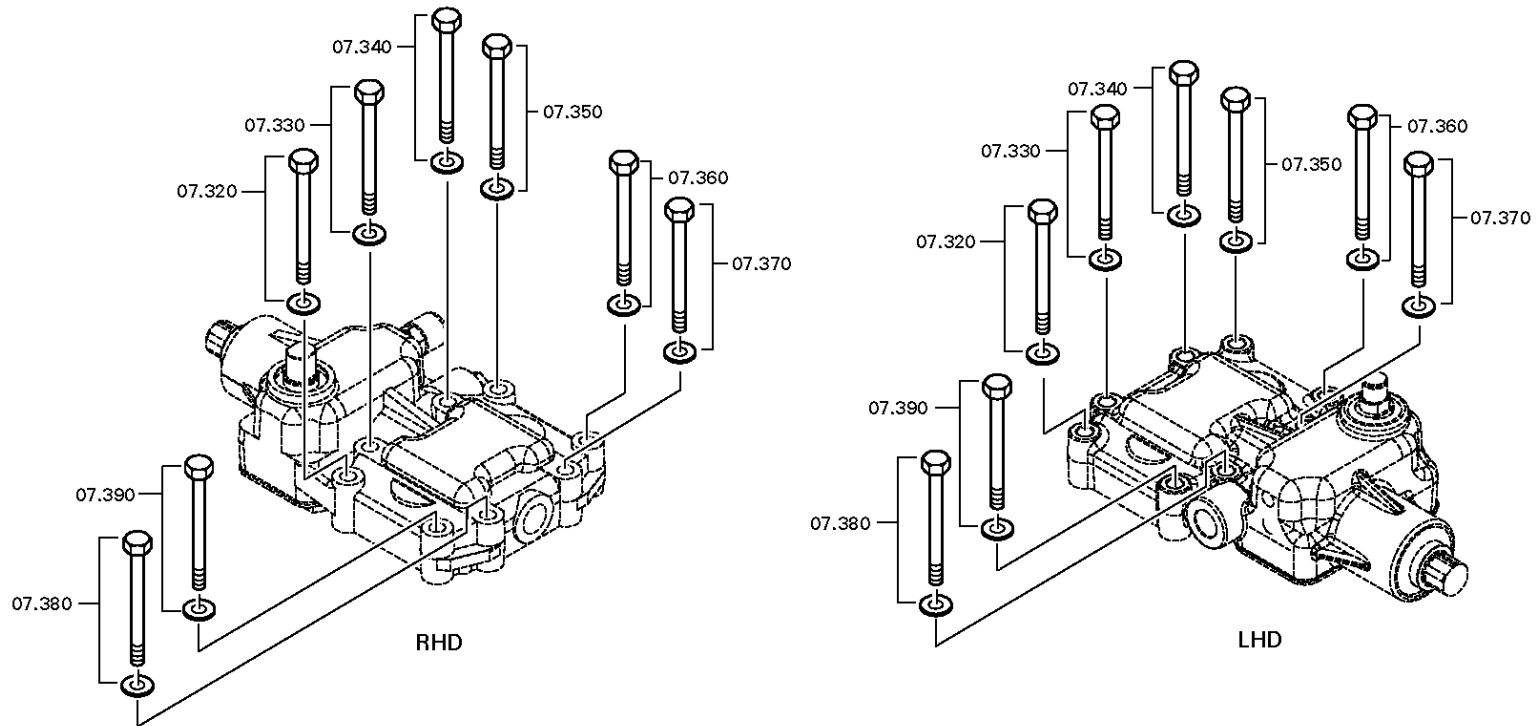
Page 2 from 3

Material number: 1380.008.007

Picture: 267.07.40-1

GEAR SHIFT HOUSING

6 S 500 TO /
GEAR SHIFT HOUSING



Picture

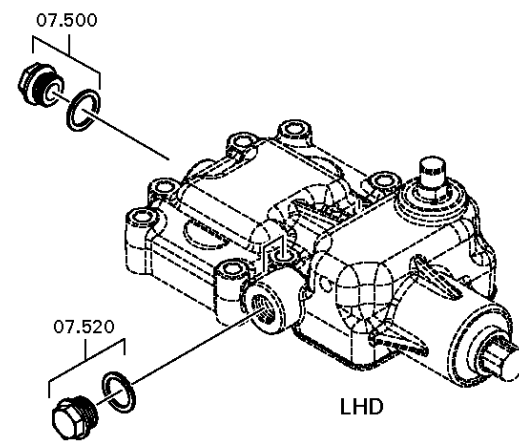
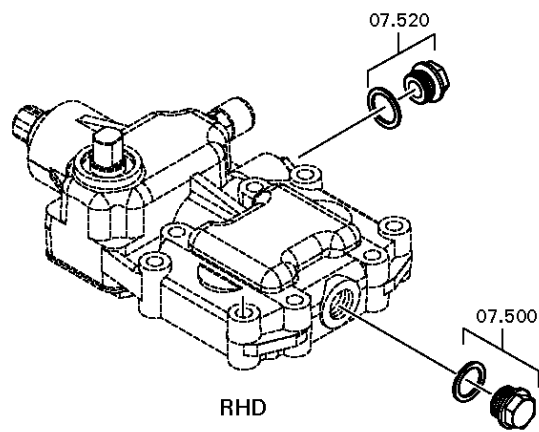
Page 3 from 3

Material number: 1380.008.007

Picture: 267.07.43-1

GEAR SHIFT HOUSING

6 S 500 TO /
GEAR SHIFT HOUSING



Picture

Page 1 from 1

Material number: 1380.008.007

Picture: 267.93.01-1

Material-assembly-group-no: 1380.168.017

6 S 500 TO /
CLUTCH RELEASE DEVICE

