



Spare Parts Catalog

2 HL 100

Material number: 4143.000.186

Current date: 29.03.2019

ZF Friedrichshafen AG
Hauptverwaltung
80038 Friedrichshafen
Deutschland

Telefon: +49 7541 77-0

Telefax: +49 7541 77-908000

www.zf.com

zuständiges Werk:
Passau

Notes relating to the spare parts catalog

Setup of the spare parts catalog

- Cover sheet
- Technical Cover (only in SDM print)
- Overview of figures
- Figure
- Associated parts list
- Next figure
- Associated parts list
- ...

Figure and parts list



Overview of figures

| Bildtafel Figure | Sachnummer Product number | Benennung (Description) | Technische Info Technical info | Description (Benennung) | Menge Quantity | Einheit Unit |
|---------------------|------------------------------|----------------------------|-----------------------------------|----------------------------|-------------------|-----------------|
| 068.08.17 | 1316.170.001 | AUSLEGER | WL | SHIFT TURRET | 1 | Stk |
| 068.08.06 | 1316.170.031 | DECKEL | WL*H-H *VM | COVER | 1 | Stk |
| 068.08.14 | 1316.170.808 | DECKEL | WL*AUSL+GEH*H-H*HF160N | COVER | 1 | Stk |
| 08 | 1316.170.441 | ANSCHLUSSTEILE | WL*NG-VORB*RG-SCHL*168N *BAJONETT | CONNECTING PARTS | 1 | Stk |

The "gap" indicates that there is no separate graphics panel (poster) for this assembly
The parts of this assembly are shown with the same mid-section number on the figure

1 Positions and subpositions

| Pos. | Sachnummer Product number | Benennung (Description) | Technische Info Technical info | Description (Benennung) | Menge Quantity | Einheit Unit |
|-------|------------------------------|----------------------------|-----------------------------------|----------------------------|-------------------|-----------------|
| 0370 | 1315.201.054 | RUECKLAUFBOLZEN | KPL.16S151*SG*L= 79 | REV.IDLER SHAFT | 1 | Stk |
| /0120 | 0631.329.293 | SPANNSTIFT | | SLOT. PIN | 1 | Stk |

Positions marked with "/" are the individual items of a completion
For example: Position 0370 contains a centering pin with the position /0120

2 Combinations with standardized parts

| Pos. | Sachnummer Product number | Benennung (Description) | Technische Info Technical info | Description (Benennung) | Menge Quantity | Einheit Unit |
|------|------------------------------|----------------------------|-----------------------------------|----------------------------|-------------------|-----------------|
| 0630 | | VERSCHL.SCHR. | | SCREW PLUG | 1 | Stk |
| | 0636.302.067 | VERSCHL.SCHR. | | SCREW PLUG | 1 | Stk |
| | 0634.801.249 | DICHTRING | A 26 X 31 | SEALING RING | 1 | Stk |

The parts list shows the components included in the combination of standardized parts

3 Depiction of position/item number on the figure and in the parts list

01.620 - on the figure 01 relates to the assembly in which the position is included. Due to program-related reasons, it is shown on the figure.

0620 - in the parts list

| Pos. | Sachnummer Product number | Benennung (Description) | Technische Info Technical info | Description (Benennung) | Menge Quantity | Einheit Unit |
|------|------------------------------|----------------------------|-----------------------------------|----------------------------|-------------------|-----------------|
| 0620 | 0732.040.736 | DRUCKFEDER | | COMPRESSION SPRING | 1 | Stk |

4 *-Positions

Positions marked with an * are optional i.e. inclusion in the parts list is not mandatory.
The following note is shown on the figure

je nach Stücklistenausführung
depending on spec. number
*
suivant la nomenclature
secondo la distinta base

5 Parts, dotted display

Parts with dotted display on the figure are only used for orientation of other parts



| Pos. | Information | Amendment number |
|------|--|------------------|
| | CUSTOMER:LIEBHERR GMBH | |
| | IDENT-NR:5010 430 | |
| | PROJECT-NO.: | |
| | VEHICLE DATA: | |
| | MOBILBAGGER: A 904 LITRONIC/SPEEDER | |
| | FAHRZEUGMASSE: 18,1T | |
| | MOTORLEISTUNG: P= 99 KW BEI N=2000 UPM | |
| | FAHRANTR.LEIST.: P= 89 KW BEI N=2000 UPM | |
| | HYDRO-PUMPE: LPV 150 | |
| | HYDRO-MOTOR: LMV 140 | |
| | DIFFERENZDRUCK: 350BAR | |
| | DREHMOMENT: T= 747 NM BEI P=350 BAR | |
| | DREHZAHL: N-MAX= 3222 UPM | |
| | TIRES: 10.00-20 | |
| | REIFENRADIUS EFF.0,506M | |
| | VORDERACHSE APL- 765 I-GES=13,55 | |
| | HINTERACHSE AP-B765 I-GES=13,55 | |
| | ZUGKRAFTDIA.:4143 701 420 (3) | |
| | INST.INSTRUCTION: 4143 700 061 | |
| | BREMSBERECHNUNG: 4143 709 156 (4) | |
| | PROJECT-NO.: | |
| | VEHICLE DATA: | |
| | MOBILBAGGER: A 914 LITRONIC | |
| | FAHRZEUGMASSE: 19,00T | |
| | MOTORLEISTUNG: P=112 KW BEI N=2000 UPM | |
| | FAHRANTR.LEIST.: P=100 KW BEI N=2000 UPM | |
| | HYDRO-PUMPE: LPVD125 | |
| | HYDRO-MOTOR: LMV 140 | |
| | DIFFERENTIAL PRESSURE: 350 BAR | |
| | DREHMOMENT: T=747 NM BEI P=350 BAR | |
| | DREHZAHL: N-MAX= 2800 UPM | |
| | TIRES: | |
| | REIFENRADIUS EFF.0,521M | |

Technical Cover

Page 2 from 5

Material number: 4143.000.186



2 HL 100 /

| Pos. | Information | Amendment number |
|------|--|------------------|
| | VORDERACHSE APL-B765 I-GES=17,6 | |
| | HINTERACHSE AP-B765 I-GES=17,6 | |
| | ZUGKRAFTDIA.:4143 701 421 (3) | |
| | BREMSBERECHNUNG: 4443 709 157 (4) | |
| | PROJECT-NO.: | |
| | VEHICLE DATA: | |
| | MOBILBAGGER: A 914 LITR/SPEEDER | |
| | FAHRZEUGMASSE: 19,00T | |
| | MOTORLEISTUNG: P=112 KW BEI N=2000 UPM | |
| | FAHRANTR.LEIST.: P=100 KW BEI N=2000 UPM | |
| | HYDRO-PUMPE: LPVD125 | |
| | HYDRO-MOTOR: LMV 140 | |
| | DIFFERENTIAL PRESSURE: 350 BAR | |
| | DREHMOMENT: T=747 NM BEI P=350 BAR | |
| | SPEED: | |
| | TIRES: | |
| | REIFENRADIUS EFF.0,521M | |
| | VORDERACHSE APL-B765 I-GES=16,21 | |
| | HINTERACHSE AP-B765 I-GES=16,21 | |
| | ZUGKRAFTDIA.:4143 701 422 (3) | |
| | BREMSBERECHNUNG: 4474 709 158 (4) | |
| | PROJECT-NO.: | |
| | VEHICLE DATA: | |
| | MOBILBAGGER: A 924 LITR/EW | |
| | FAHRZEUGMASSE: 21,2T | |
| | MOTORLEISTUNG: P=112 KW BEI N=2000 UPM | |
| | FAHRANTR.LEIST.: P=100 KW BEI N=2000 UPM | |
| | HYDRO-PUMPE: LPVD107 | |
| | HYDRO-MOTOR: LMV 140 | |
| | DIFFERENTIAL PRESSURE: 350 BAR | |
| | DREHMOMENT: T=747 NM BEI P=350 BAR | |
| | DREHZAHL: N-MAX= 2766 UPM | |
| | TIRES: | |



| Pos. | Information | Amendment number |
|------|--|------------------|
| | REIFENRADIUS EFF.0,521M | |
| | VORDERACHSE APL-B765 I-GES=17,6 | |
| | HINTERACHSE AP-B765 I-GES=17,6 | |
| | ZUGKRAFTDIA.:4143 701 423 (3) | |
| | BREMSBERECHNUNG: 4443 709 159 () | |
| | PROJECT-NO.: | |
| | VEHICLE DATA: | |
| | MOBILBAGGER: A 934 LITRON/712 | |
| | FAHRZEUGMASSE: 32,0 T | |
| | MOTORLEISTUNG: P=137 KW BEI N=2000 UPM | |
| | FAHRANTR.LEIST.: P=119 KW BEI N=1953 UPM | |
| | HYDRO-PUMPE: LPVD125 | |
| | HYDRO-MOTOR: LMV 140 | |
| | DIFFERENTIAL PRESSURE: 350 BAR | |
| | DREHMOMENT: T=753 NM BEI P=350 BAR | |
| | DREHZAHL: N-MAX= 3473 UPM | |
| | TIRES: | |
| | REIFENRADIUS EFF.0,540M | |
| | VORDERACHSE I-GES=22,36 | |
| | HINTERACHSE I-GES=22,36 | |
| | ZUGKRAFTDIA.:4143 701 424 (3) | |
| | BREMSBERECHNUNG: 4143 709 160 () | |
| | PROJECT-NO.: | |
| | VEHICLE DATA: | |
| | MOBILBAGGER: A 934 LITRON/713 | |
| | FAHRZEUGMASSE: 34,5T | |
| | MOTORLEISTUNG: P=137 KW BEI N=2000 UPM | |
| | FAHRANTR.LEIST.: P=119 KW BEI N=1953 UPM | |
| | HYDRO-PUMPE: LPVD125 | |
| | HYDRO-MOTOR: LMV 140 | |
| | DIFFERENTIAL PRESSURE: 350 BAR | |
| | DREHMOMENT: T=753 NM BEI P=350 BAR | |
| | DREHZAHL: N-MAX= 3473 UPM | |

Technical Cover

Page 5 from 5

Material number: 4143.000.186



2 HL 100 /

| Pos. | Information | Amendment number |
|------|------------------------------|------------------|
| | FARBE: VERKEHRSGRAU RAL 7043 | |
| | ENDLACKIERT | |

Assembly group overview

Page 1 from 2

Material number: 4143.000.186



2 HL 100 /

| Graphics | Pos. | Material number | Name | Quantity | Amend. no. | Techn. Info. |
|--------------|------|-----------------|-------------------|----------|------------|--------------|
| 414312500420 | 490 | 4143.125.006 | INPUT HOUSING | 1 | | |
| 414310200200 | 30 | 4143.102.002 | INPUT | 1 | | |
| 414310240500 | 40 | 4143.102.405 | INPUT | 1 | | |
| | 10 | 4143.101.009 | HOUSING | 1 | | |
| 414310141050 | 20 | 4143.101.410 | HOUSING | 1 | | |
| 414312101020 | 410 | 4143.121.007 | OIL PIPE | 1 | | |
| 414315200200 | 830 | 4143.152.002 | COUPLING | 1 | | |
| 414315240200 | 840 | 4143.152.402 | COUPLING | 1 | | |
| 414315100201 | 810 | 4143.151.006 | MULTIDISK BRAKE | 1 | | |
| 414315140500 | 820 | 4143.151.405 | MULTIDISK BRAKE | 1 | | |
| 414311500100 | 290 | 4143.115.003 | PLANETARY DRIVE | 1 | | |
| 414313400120 | 574 | 4143.134.002 | DISCONNECTION | 1 | | |
| 414313500200 | 590 | 4143.135.002 | SPUR GEAR DRIVE | 1 | | |
| 414313540500 | 600 | 4143.135.405 | SPUR GEAR DRIVE | 1 | | |
| 414314202020 | 710 | 4143.142.024 | GEAR SHIFT SENSOR | 1 | | |
| 414314201620 | 715 | 4143.142.408 | GEAR SHIFT SENSOR | 1 | | |
| 414314240620 | 720 | 4143.142.406 | GEAR SHIFT SENSOR | 1 | | |

Assembly group overview

Page 2 from 2

Material number: 4143.000.186



2 HL 100 /

| Graphics | Pos. | Material number | Name | Quantity | Amend. no. | Techn. Info. |
|--------------|------|-----------------|-------------|----------|------------|--------------|
| 414310300500 | 50 | 4143.103.005 | OUTPUT | 1 | | |
| 414310340100 | 60 | 4143.103.401 | OUTPUT | 1 | | |
| 414319600100 | 970 | 4143.196.001 | DISPO-TEILE | 1 | | |

Plant

Page 1 from 1

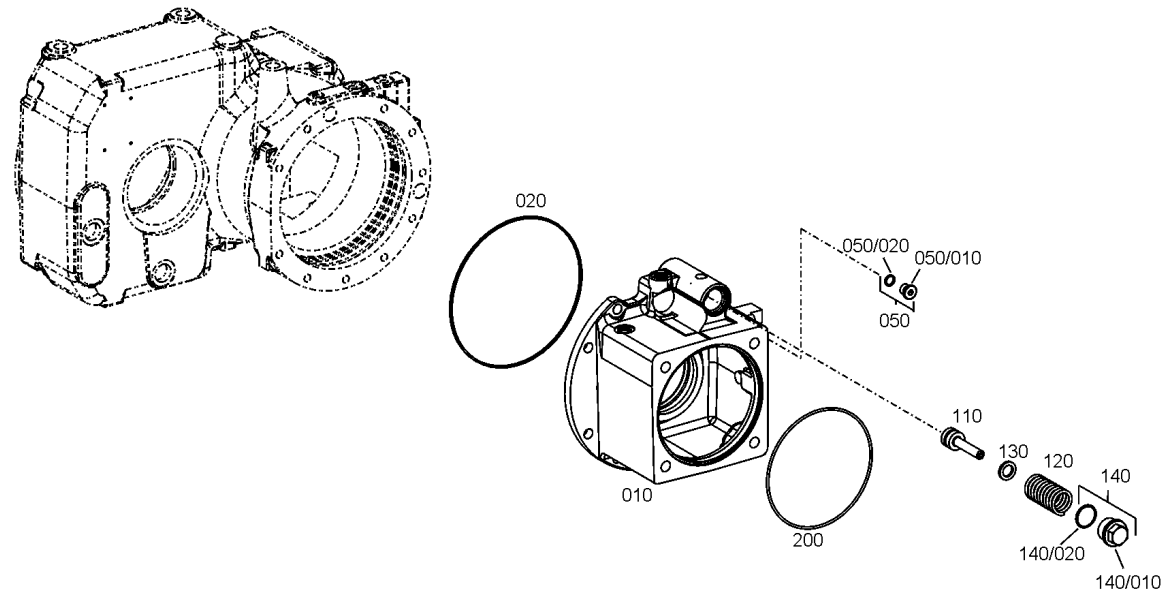
Material number: 4143.000.186

Plant: 414312500420

Material-assembly-group-no: 4143.125.006



2 HL 100 /
INPUT HOUSING



Plant

Page 1 from 1

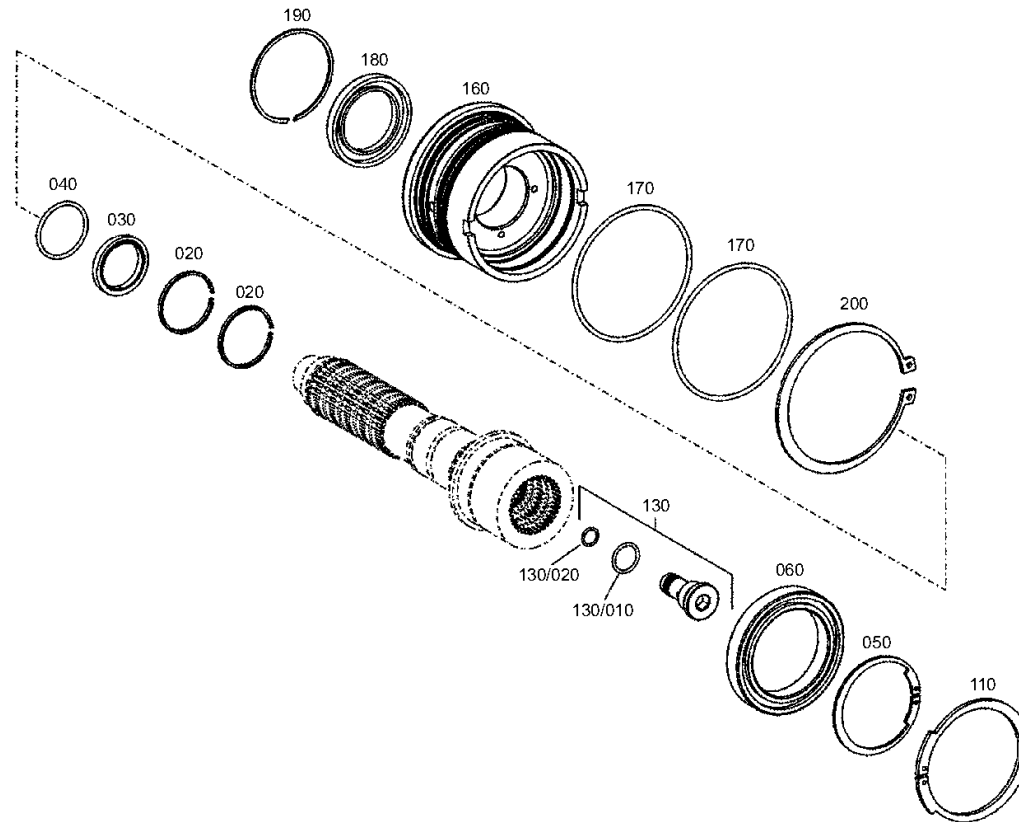
Material number: 4143.000.186

Plant: 414310200200

Material-assembly-group-no: 4143.102.002



2 HL 100 /
INPUT



Plant

Page 1 from 1

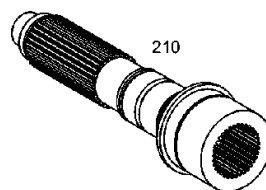
Material number: 4143.000.186

Plant: 414310240500

Material-assembly-group-no: 4143.102.405



2 HL 100 /
INPUT



Plant

Page 1 from 1

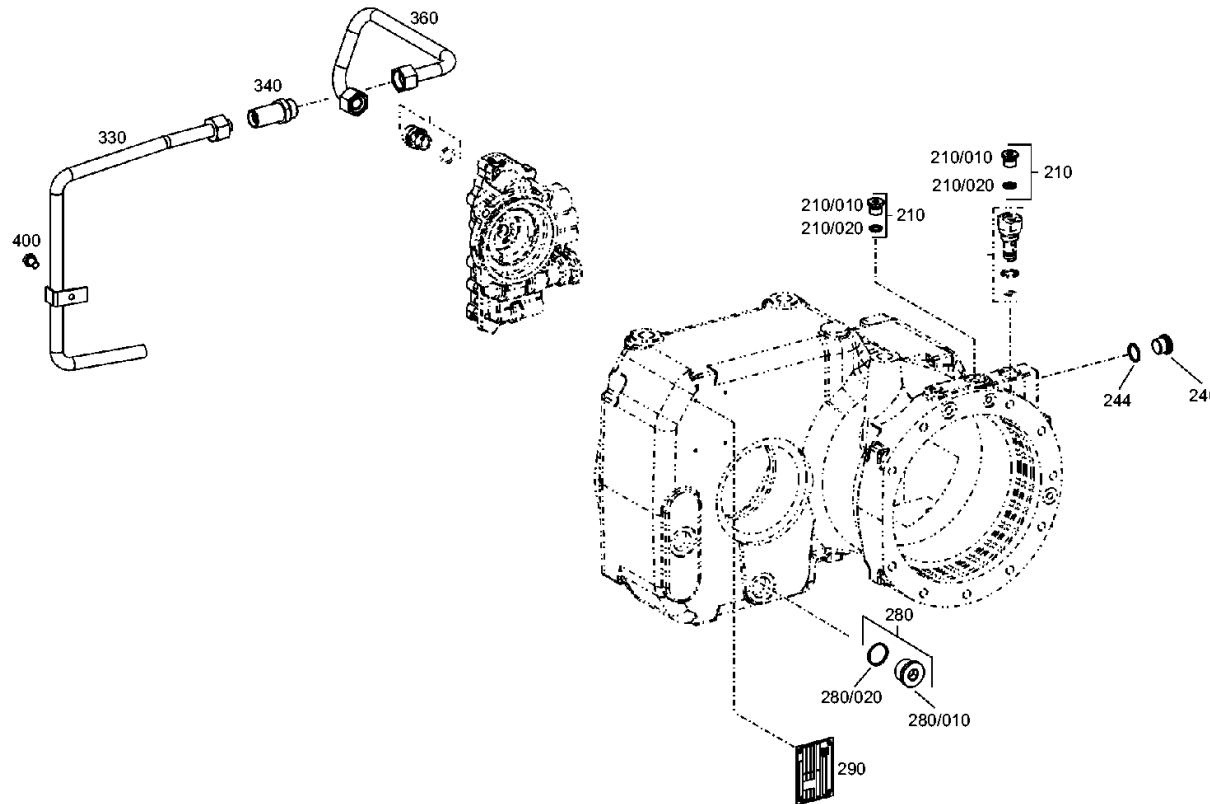
Material number: 4143.000.186

Plant: 414310141050

Material-assembly-group-no: 4143.101.410



2 HL 100 /
HOUSING



Plant

Page 1 from 1

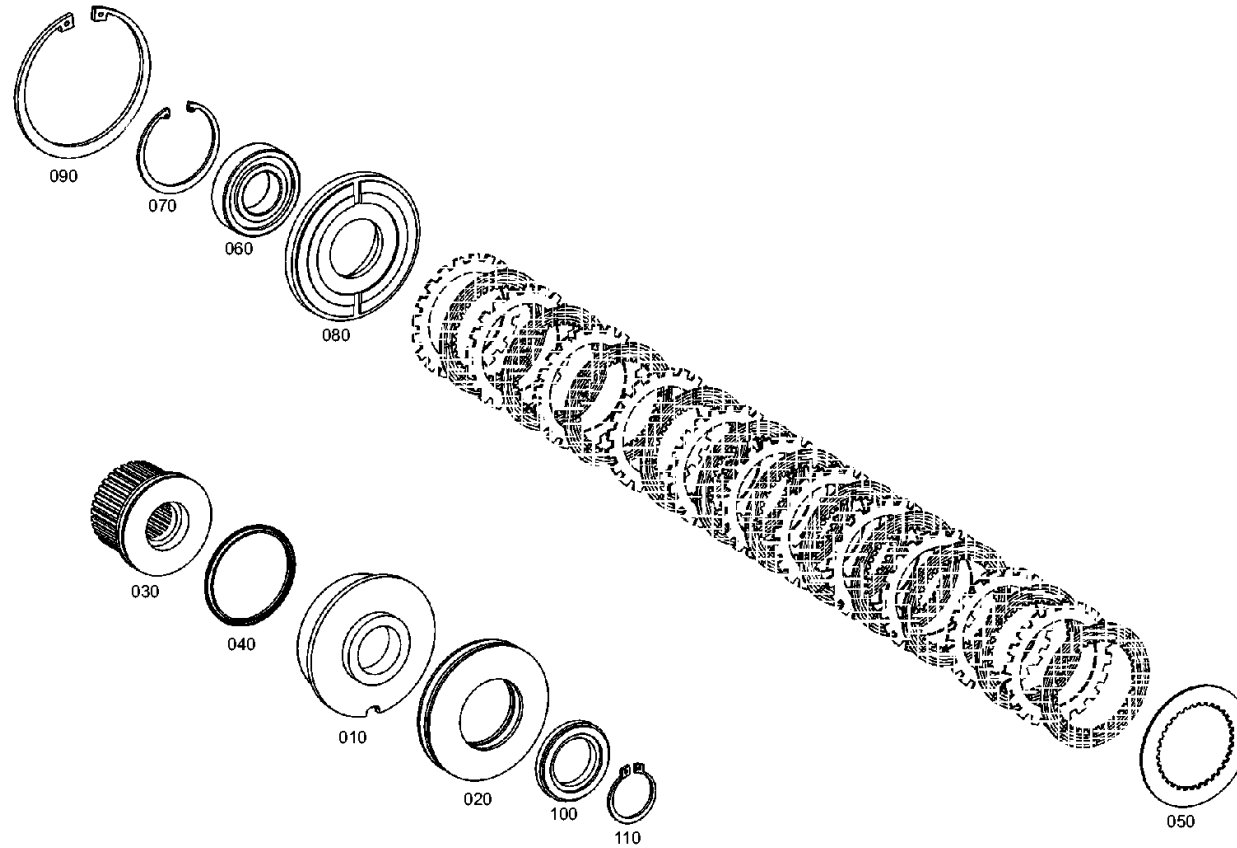
Material number: 4143.000.186

Plant: 414315200200

Material-assembly-group-no: 4143.152.002



2 HL 100 /
COUPLING



Plant

Page 1 from 1

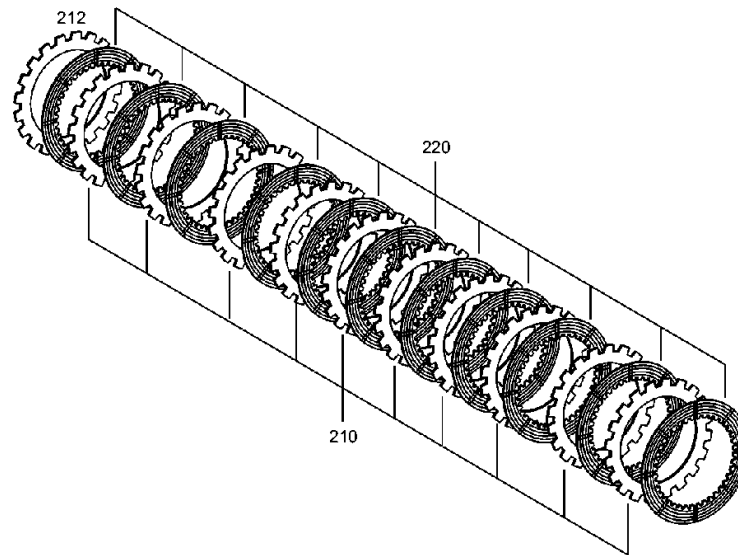
Material number: 4143.000.186

Plant: 414315240200

Material-assembly-group-no: 4143.152.402



2 HL 100 /
COUPLING



Plant

Page 1 from 1

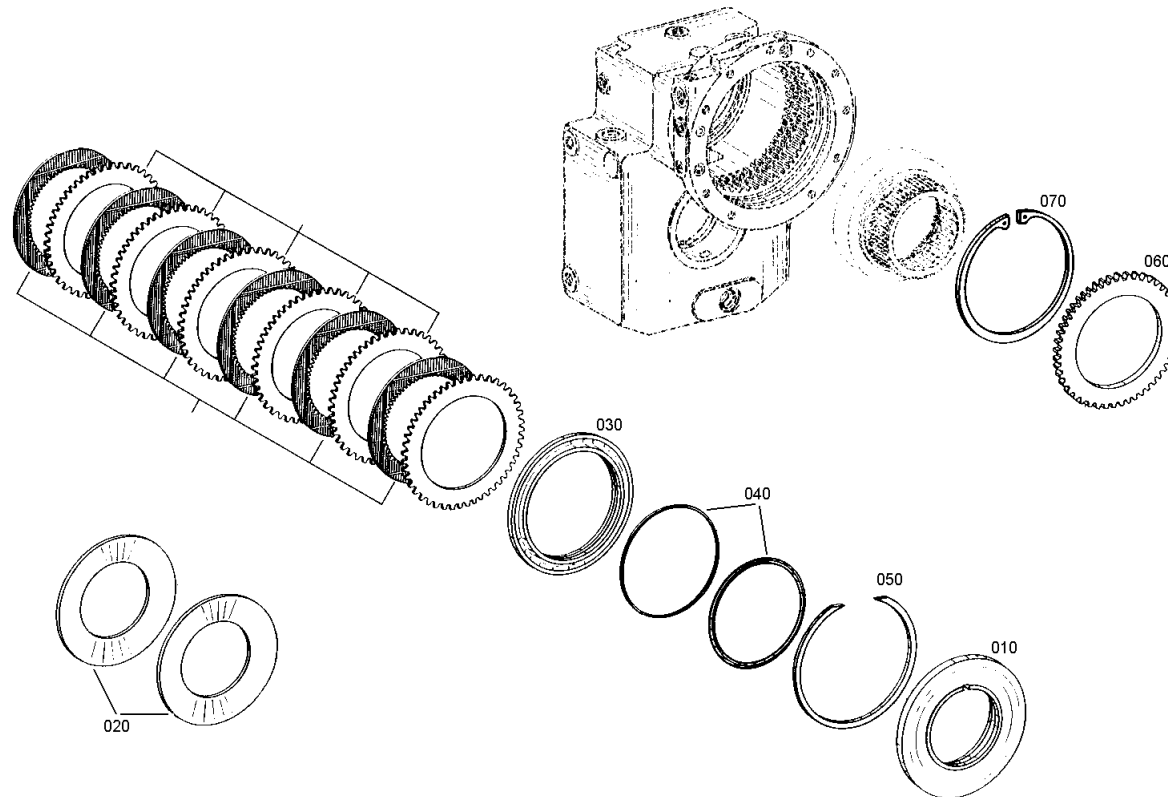
Material number: 4143.000.186

Plant: 414315100201

Material-assembly-group-no: 4143.151.006



2 HL 100 /
MULTIDISK BRAKE



Plant

Page 1 from 1

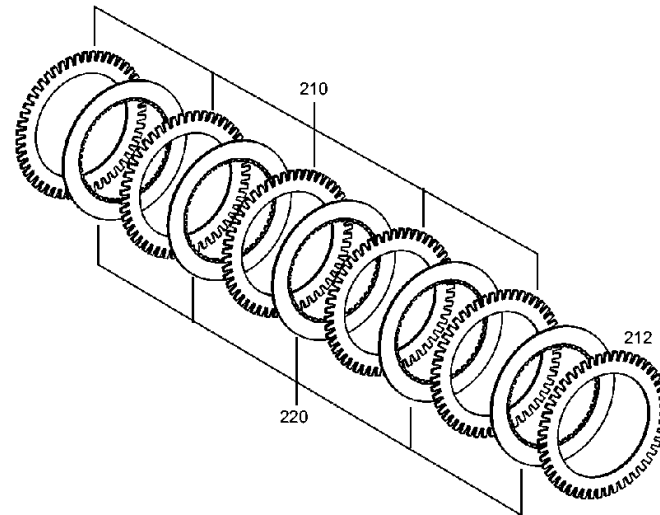
Material number: 4143.000.186

Plant: 414315140500

Material-assembly-group-no: 4143.151.405



2 HL 100 /
MULTIDISK BRAKE



Plant

Page 1 from 1

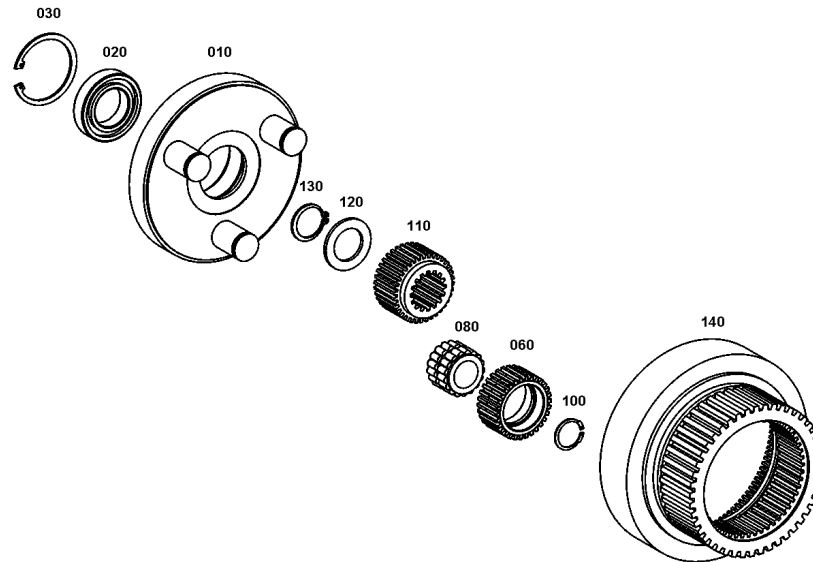
Material number: 4143.000.186

Plant: 414311500100

Material-assembly-group-no: 4143.115.003



2 HL 100 /
PLANETARY DRIVE



Plant

Page 1 from 1

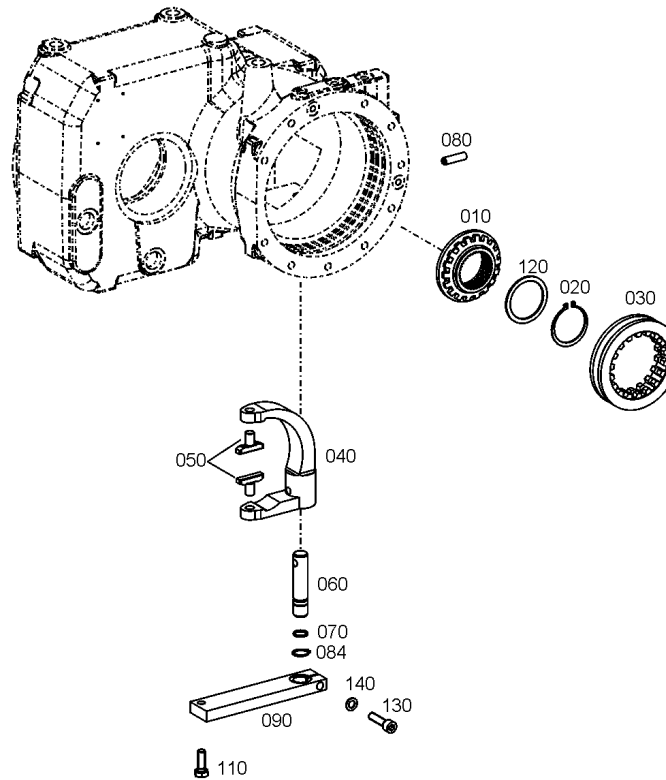
Material number: 4143.000.186

Plant: 414313400120

Material-assembly-group-no: 4143.134.002



2 HL 100 /
DISCONNECTION



Plant

Page 1 from 1

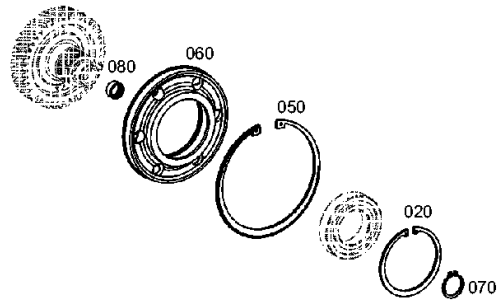
Material number: 4143.000.186

Plant: 414313500200

Material-assembly-group-no: 4143.135.002



2 HL 100 /
SPUR GEAR DRIVE



Plant

Page 1 from 1

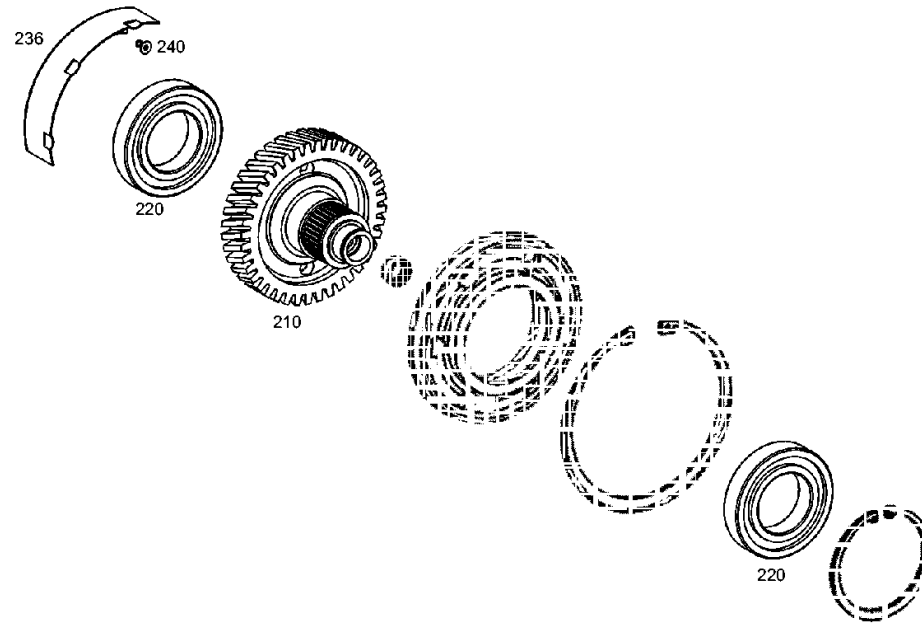
Material number: 4143.000.186

Plant: 414313540500

Material-assembly-group-no: 4143.135.405



2 HL 100 /
SPUR GEAR DRIVE



Plant

Page 1 from 1

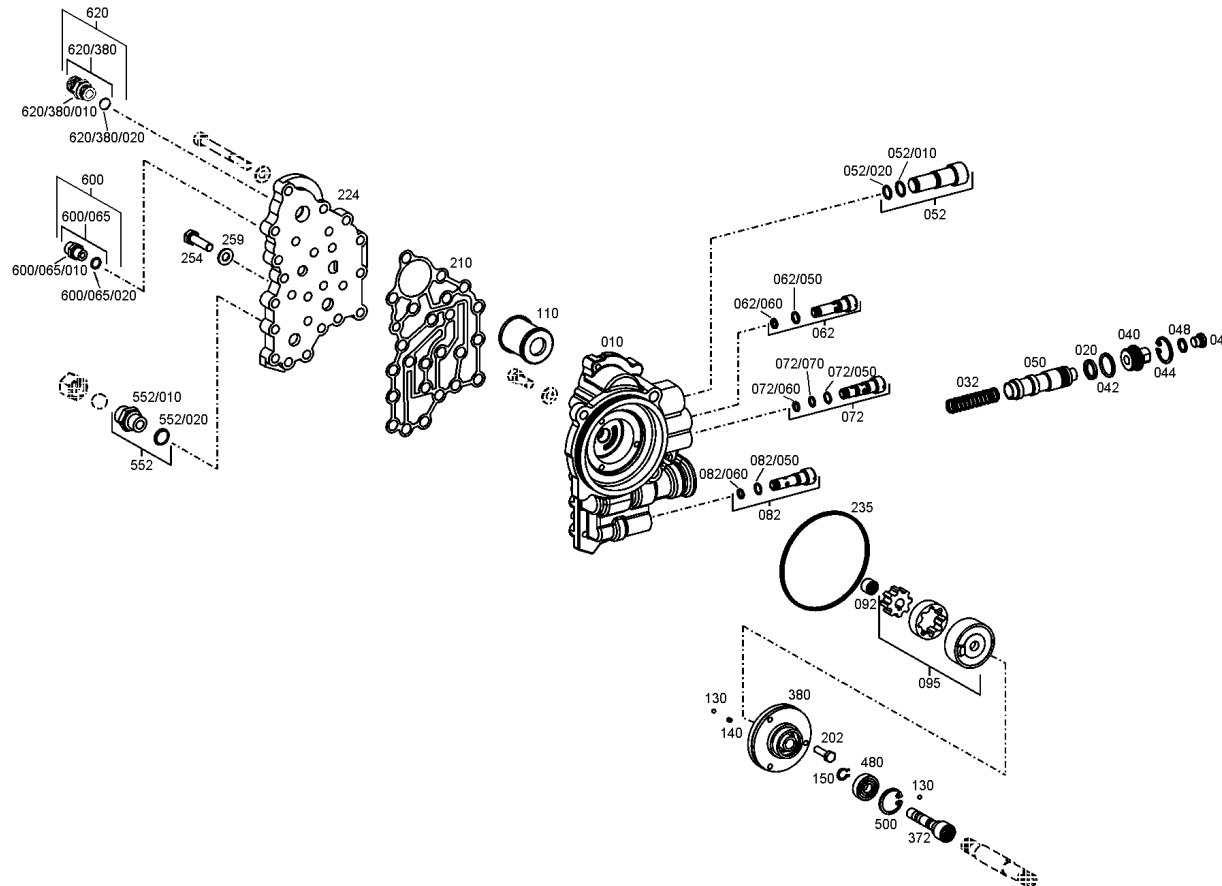
Material number: 4143.000.186

Plant: 414314202020

Material-assembly-group-no: 4143.142.024



2 HL 100 /
GEAR SHIFT SENSOR



Plant

Page 1 from 1

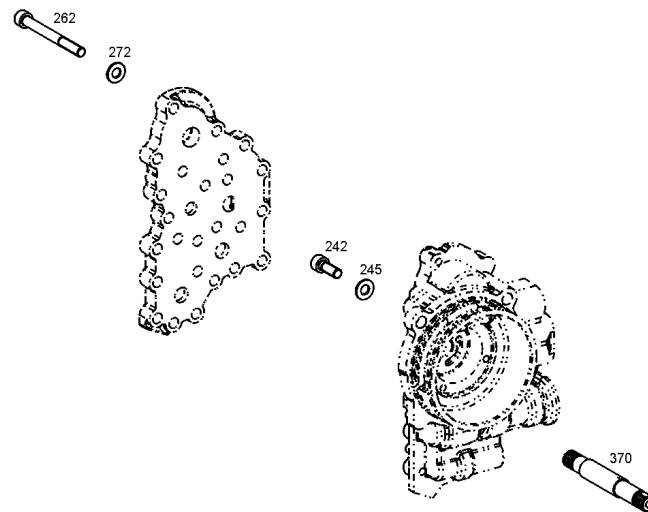
Material number: 4143.000.186

Plant: 414314201620

Material-assembly-group-no: 4143.142.408



2 HL 100 /
GEAR SHIFT SENSOR



Plant

Page 1 from 1

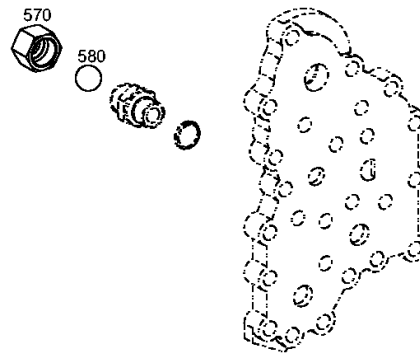
Material number: 4143.000.186

Plant: 414314240620

Material-assembly-group-no: 4143.142.406



2 HL 100 /
GEAR SHIFT SENSOR



Plant

Page 1 from 1

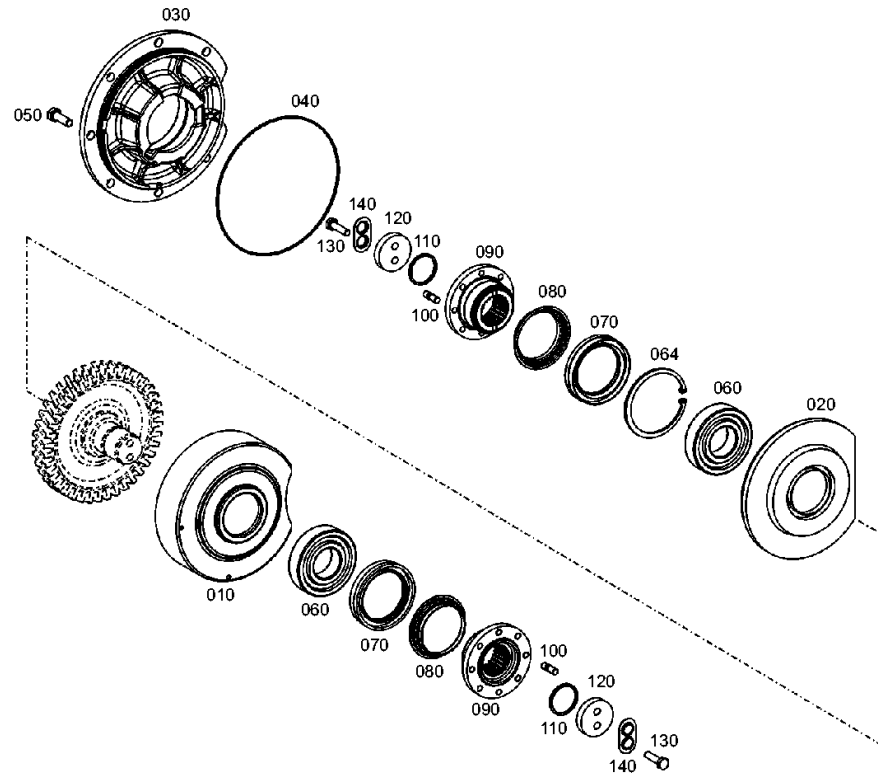
Material number: 4143.000.186

Plant: 414310300500

Material-assembly-group-no: 4143.103.005



2 HL 100 /
OUTPUT



Plant

Page 1 from 1

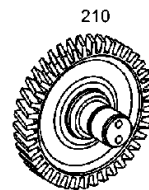
Material number: 4143.000.186

Plant: 414310340100

Material-assembly-group-no: 4143.103.401



2 HL 100 /
OUTPUT



Plant

Page 1 from 1

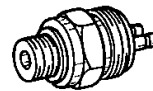
Material number: 4143.000.186

Plant: 414319600100

Material-assembly-group-no: 4143.196.001



2 HL 100 /
DISPO-TEILE



020