



Spare Parts Catalog

6 WG 210

Material number: 4657.056.181

Current date: 04.12.2018

ZF Friedrichshafen AG
Hauptverwaltung
80038 Friedrichshafen
Deutschland

Telefon: +49 7541 77-0

Telefax: +49 7541 77-908000

www.zf.com

zuständiges Werk:
Passau

Notes relating to the spare parts catalog

Setup of the spare parts catalog

- Cover sheet
- Technical Cover (only in SDM print)
- Overview of figures
- Figure
- Associated parts list
- Next figure
- Associated parts list
- ...

Figure and parts list



Overview of figures

Bildtafel Figure	Sachnummer Product number	Benennung (Description)	Technische Info Technical info	Description (Benennung)	Menge Quantity	Einheit Unit
068.08.17	1316.170.001	AUSLEGER	WL	SHIFT TURRET	1	Stk
068.08.06	1316.170.031	DECKEL	WL*H-H *VM	COVER	1	Stk
068.08.14	1316.170.808	DECKEL	WL*AUSL+GEH*H-H*HF160N	COVER	1	Stk
08	1316.170.441	ANSCHLUSSTEILE	WL*NG-VORB*RG-SCHL*168N *BAJONETT	CONNECTING PARTS	1	Stk

The "gap" indicates that there is no separate graphics panel (poster) for this assembly
The parts of this assembly are shown with the same mid-section number on the figure

1 Positions and subpositions

Pos.	Sachnummer Product number	Benennung (Description)	Technische Info Technical info	Description (Benennung)	Menge Quantity	Einheit Unit
0370	1315.201.054	RUECKLAUFBOLZEN	KPL.16S151*SG*L= 79	REV.IDLER SHAFT	1	Stk
/0120	0631.329.293	SPANNSTIFT		SLOT. PIN	1	Stk

Positions marked with "/" are the individual items of a completion
For example: Position 0370 contains a centering pin with the position /0120

2 Combinations with standardized parts

Pos.	Sachnummer Product number	Benennung (Description)	Technische Info Technical info	Description (Benennung)	Menge Quantity	Einheit Unit
0630		VERSCHL.SCHR.		SCREW PLUG	1	Stk
	0636.302.067	VERSCHL.SCHR.		SCREW PLUG	1	Stk
	0634.801.249	DICHTRING	A 26 X 31	SEALING RING	1	Stk

The parts list shows the components included in the combination of standardized parts

3 Depiction of position/item number on the figure and in the parts list

01.620 - on the figure 01 relates to the assembly in which the position is included. Due to program-related reasons, it is shown on the figure.

0620 - in the parts list

Pos.	Sachnummer Product number	Benennung (Description)	Technische Info Technical info	Description (Benennung)	Menge Quantity	Einheit Unit
0620	0732.040.736	DRUCKFEDER		COMPRESSION SPRING	1	Stk

4 *-Positions

Positions marked with an * are optional i.e. inclusion in the parts list is not mandatory.
The following note is shown on the figure

je nach Stücklistenausführung
depending on spec. number
*
suivant la nomenclature
secondo la distinta base

5 Parts, dotted display

Parts with dotted display on the figure are only used for orientation of other parts

Technical Cover

Page 1 from 4

Material number: 4657.056.181



6 WG 210 /

Pos.	Information	Amendment number
	CUSTOMER: PETERSBURGER TRAKTORENWERKE	
	1.PERFORMANCE CALC.: 4657 707 925	
	VEHICLE DESIGNATION: TRAKTOR K-708.2	
	WEIGHT LOADED: 37,400 TO	
	ENGINE: YAMZ 53622	
	ENGINE POWER: 179,7 KW	
	SPEED: 2200 U/MIN	
	INPUT TORQUE: 900 N/M	
	SPEED: 1600 U/MIN	
	TYRE SIZE: 23,5 R25	
	TYRE RADIUS DYN.: 0,820 M	
	AXLE RATIO: 17,538	
	MAX. SPEED: 50,8 KM/H	
	2.PERFORMANCE CALC.: 4657 708 287	
	VEHICLE DESIGNATION: TRACTOR K-708.2-240	
	WEIGHT LOADED: 14,000 TO	
	ENGINE: YAMZ 53622-10	
	ENGINE POWER: 179,7 KW	
	SPEED: 2200 U/MIN	
	INPUT TORQUE: 900 N/M	
	SPEED: 1600 U/MIN	
	TYRE SIZE: 23,1 R26	
	TYRE RADIUS DYN.: 0,800 M	
	AXLE RATIO: 20,450	
	MAX. SPEED: 54,44 KM/H	
	3.PERFORMANCE CALC.: 4657 708 310	
	VEHICLE DESIGNATION: TRACTOR K-426	
	WEIGHT LOADED: 15,000 TO	
	ENGINE: CUMMINS QSB6.7 FR91422	
	ENGINE POWER: 201,6 KW	
	SPEED: 2300 U/MIN	
	INPUT TORQUE: 990 N/M	
	SPEED: 1500 U/MIN	

Technical Cover

Page 2 from 4

Material number: 4657.056.181



6 WG 210 /

Pos.	Information	Amendment number
	TYRE SIZE: 23,1 R26	
	TYRE RADIUS DYN.: 0,740 M	
	AXLE RATIO: 23,634	
	MAX. SPEED: 49,7 KM/H	
	4.PERFORMANCE CALC.: 4657 708 428	
	VEHICLE DESIGNATION: TRACTOR K-426	
	WEIGHT LOADED: 14,000 TO	
	ENGINE: YAMZ 53625 F	
	ENGINE POWER: 184,7 KW	
	SPEED: 2100 U/MIN	
	INPUT TORQUE: 1000 N/M	
	SPEED: 1500 U/MIN	
	TYRE SIZE: 23,1 R26	
	TYRE RADIUS DYN.: 0,715 M	
	AXLE RATIO: 20,260	
	MAX. SPEED: 51,5 KM/H	
	PRODUCT DESCRIPTION: ZF-ERGOPOWER TRANSMISSION	
	TRANSMISSION TYPE: 6 WG 210	
	DROP CENTER DISTANCE: 540 MM	
	PRODUCTION LOCATION: PASSAU	
	VEHICLE: DUMPER	
	1. GEAR FORWARD: 5,562	
	2. GEAR FORWARD: 3,615	
	3. GEAR FORWARD: 2,255	
	4. GEAR FORWARD: 1,466	
	5. GEAR FORWARD: 0,942	
	6. GEAR FORWARD: 0,613	
	1. GEAR REVERSE: 5,274	
	2. GEAR REVERSE: 2,138	
	3. GEAR REVERSE: 0,894	
	NUMBER OF PULSES ENGIN: 4	
	NUMBER OF PULSES TURBINE: 54	
	NUMBER OF PULSES MRK: 55	

Technical Cover

Page 3 from 4

Material number: 4657.056.181



6 WG 210 /

Pos.	Information	Amendment number
	NUMBER OF PULSES OUTPUT: 46	
	CONVERTER: W 340	
	CONVERTER PART NO.: 034 H 126	
	LOCK-UP CLUTCH: WITH	
	STALL TORQUE RATIO: 2,35	
	TORQUE CONVERTER ABSORPTION: 182 NM	
	STATOR FREEWHEEL: WITH	
	ENGINE INPUT: REMOTE MOUNTED VIA JOINT SHAFT	
	INPUT FLANGE: D 150 8 X M12 X 35	
	OUTPUT: STANDARD	
	OUTPUT CONVERTER SIDE: WITHOUT AXLE DISCONNECT	
	OUTPUT FLANGE CONVERTER SIDE: D 150 8 X DIA 12 X 45	
	AXIAL DISPLACEABILITY: WITHOUT	
	OUTPUT PTO SIDE: WITHOUT PARKING BRAKE	
	OUTPUT FLANGE PTO SIDE: D 150 8 X DIA 12 X 45	
	POWER TAKE OFF: 1 PTO COAXIAL ENGINE-DEPENDENT	
	PTO - DISCONNECTION: WITHOUT	
	1.PTO FLANGE: SAE C 2/4 HOLE	
	DRIVER PROFILE: SAE C 12/24 DP 14 T	
	GEAR CHANGE CONTROL: ZF-ERGOSHIFT/ PROP VALVE	
	VOLTAGE: 24 VOLT	
	SETTING SPECIFICATION: 4657.700.099	
	SPEED CONTROL: CONNECTION VIA EST	
	OIL LEVEL TUBE: MOUNTED ON CONVERTER SIDE	
	OIL DIPSTICK: CUSTOMISATION	
	FILTER INSTALLATION: SEPARATE MOUNTED	
	PRES. DROP SWITCH: CLOSING SWITCH	
	EMERGENCY STEERING PUMP: WITHOUT	
	TEMPERATURE SENSOR T/C: WITH (VIA EST)	
	GEARBOX BREATHER: WITH	
	ERGO INCH: WITHOUT	
	SOFTWARE OPTIONS ERGOLOCKUP M	
	ENGINE DE-RATING	

Technical Cover

Page 4 from 4

Material number: 4657.056.181



6 WG 210 /

Pos.	Information	Amendment number
	ELECTRIC PARTS ORDER: INCLUDED IN SCOPE OF SUPPLY	
	SCOPE OF SUPPLIES GEAR SELECTOR VTS3	
	DISPLAY COMPLETE	
	WIRING ADAPTER WITH LWK	
	SEPARATE ORDER: EST-37A S. SCD 000000823834	
	GROUP LOOSE PARTS: 4657 183 330	
	GEAR SELECTOR: VTS 3	
	2ND GEAR SELECTOR: WITHOUT	
	DISPLAY: FOR SEPERATE MOUNTING	
	LOAD SENSOR: WITHOUT	
	WIRING: WITH	
	OIL CAPACITY TRANSM.: CA. 27 LITRE	
	OIL FILLING TRANSM.: WITHOUT	
	OIL GRADE TRANSM.: TE- ML 03	
	WITH OR WITHOUT PAINTING PRIMING	
	PRIMER PAINT: BLACK RAL 9005	
	DOCUMENTATION GEAR BOX: -----	
	SECTION DRAWING: 4657 500 093	
	INSTALLATION DRAWING: 4657 656 181	
	GEARBOX DIAGRAM: 4657 700 028	
	OIL CIRCUIT DIAGRAM: 4657 700 130	
	INSTALL. INSTRUCTIONS: 0000 702 951	
	DOCU. CONTROL UNIT: -----	
	DRAWING 6009 665 002	
	DRAWING GEAR SEL. 1: 6006 635 006	
	CONNECTION DIAGRAM: 6006 700 529	
	CONNECTION DIAGRAM: S. SOFTWARE CONTROL DOC. (SCD)	
	DRAWING DISPLAY: 6007 603 047	

Assembly group overview

Page 1 from 2



6 WG 210 /

Material number: 4657.056.181

Graphics	Pos.	Material number	Name	Quantity	Amend. no.	Techn. Info.
465713005800	270	4657.130.058	ENGINE CONNECTION	1		
465713040600	280	4657.130.406	ENGINE CONNECTION	1		
416603417600	500	4166.034.176	CONVERTER	1		
465710202800	30	4657.102.028	INPUT	1		
465710108201	10	4657.101.082	TRANSMISSION HOUSING	1		
465710140800	20	4657.101.408	TRANSMISSION HOUSING	1		
414313900100	15	4143.139.001	TYPE PLATE	1		
465717103600	350	4657.171.036	COUPLING	1		
465717202700	360	4657.172.027	COUPLING	1		
465717302900	370	4657.173.029	COUPLING	1		
465717403800	380	4657.174.038	COUPLING	1		
465717501600	390	4657.175.016	COUPLING	1		
465717601900	400	4657.176.019	COUPLING	1		
465710301000	50	4657.103.010	OUTPUT	1		
465710342700	60	4657.103.427	OUTPUT	1		
465710344000	70	4657.103.440	OUTPUT	1		

Assembly group overview

Page 2 from 2



6 WG 210 /

Material number: 4657.056.181

Graphics	Pos.	Material number	Name	Quantity	Amend. no.	Techn. Info.
465715400200	340	4657.154.002	POWER TAKE-OFF	1		
465710601200	110	4657.106.012	SHIFT SYSTEM	1		
465710640720	115	4657.106.407	SHIFT SYSTEM	1		
465615901821	120	4656.159.018	SHIFT SYSTEM	1		
465712301600	225	4657.123.016	CONTROL UNIT	1		
465612000300	190	4656.120.003	PRESSURE REGULATOR	1		
465712200500	220	4657.122.005	PRESSURE OIL PUMP	1		
465613700400	310	4656.137.004	EMERGENCY STEERING PUMP	1		
465710700300	130	4657.107.003	SPEEDOMETER	1		
465712500200	250	4657.125.002	INDUCTIVE SENSOR	1		
465712400200	240	4657.124.002	TEMPERATURE SENSOR	1		
465613800500	330	4656.138.005	FILTER	1		
465619940200	335	4656.199.402	LOOSE PARTS	1		
465613100600	290	4656.131.006	OIL DIPSTICK	1		
465718333000	490	4657.183.330	LOOSE PARTS	1		

Plant

Page 1 from 1

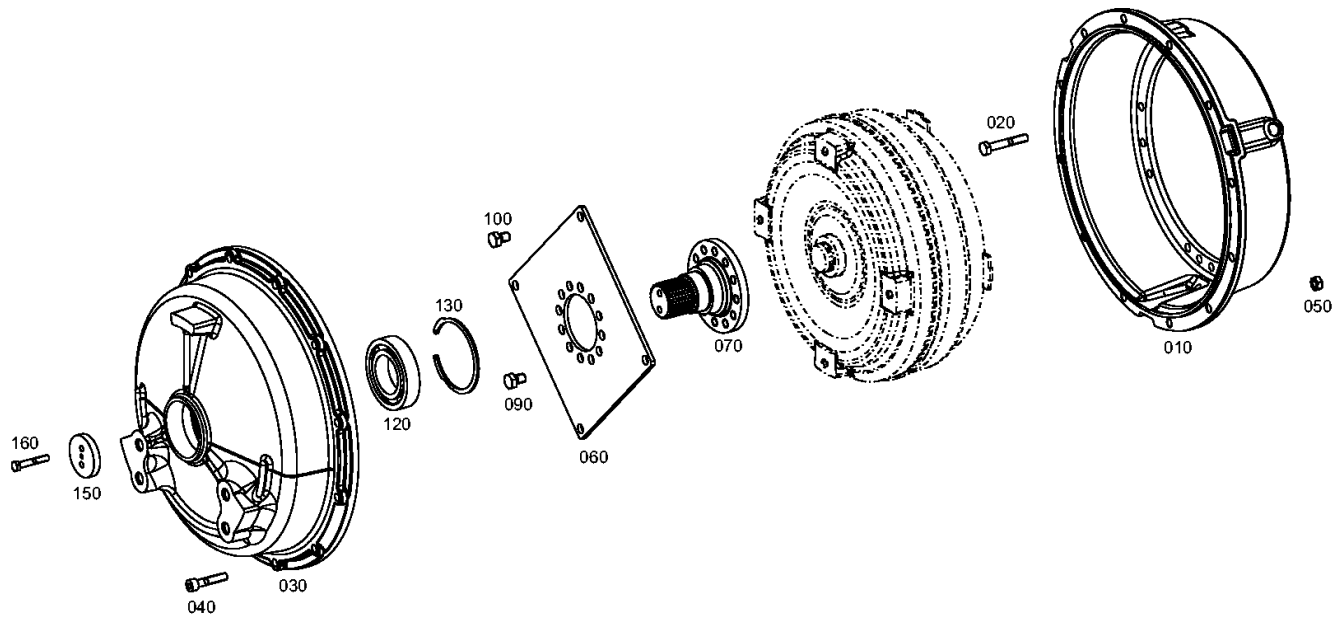
Material number: 4657.056.181

Plant: 465713005800

Material-assembly-group-no: 4657.130.058



6 WG 210 /
ENGINE CONNECTION



Plant

Page 1 from 1

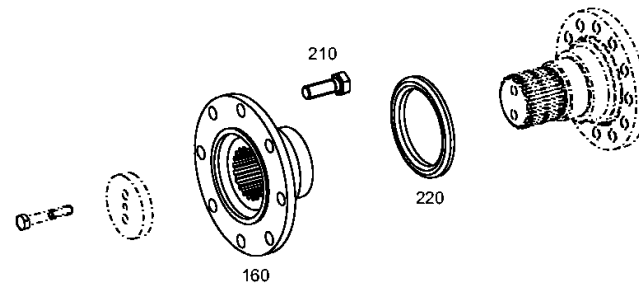
Material number: 4657.056.181

Plant: 465713040600

Material-assembly-group-no: 4657.130.406



6 WG 210 /
ENGINE CONNECTION



Plant

Page 1 from 1

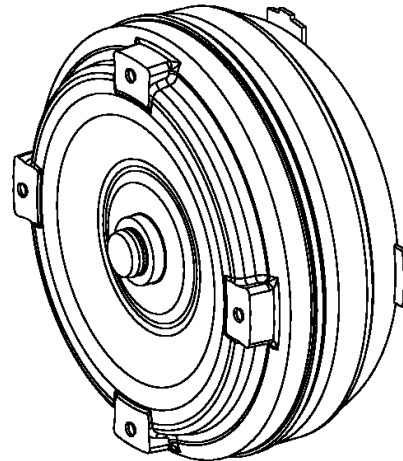
Material number: 4657.056.181

Plant: 416603417600

Material-assembly-group-no: 4166.034.176



6 WG 210 /
CONVERTER



010

Plant

Page 1 from 1

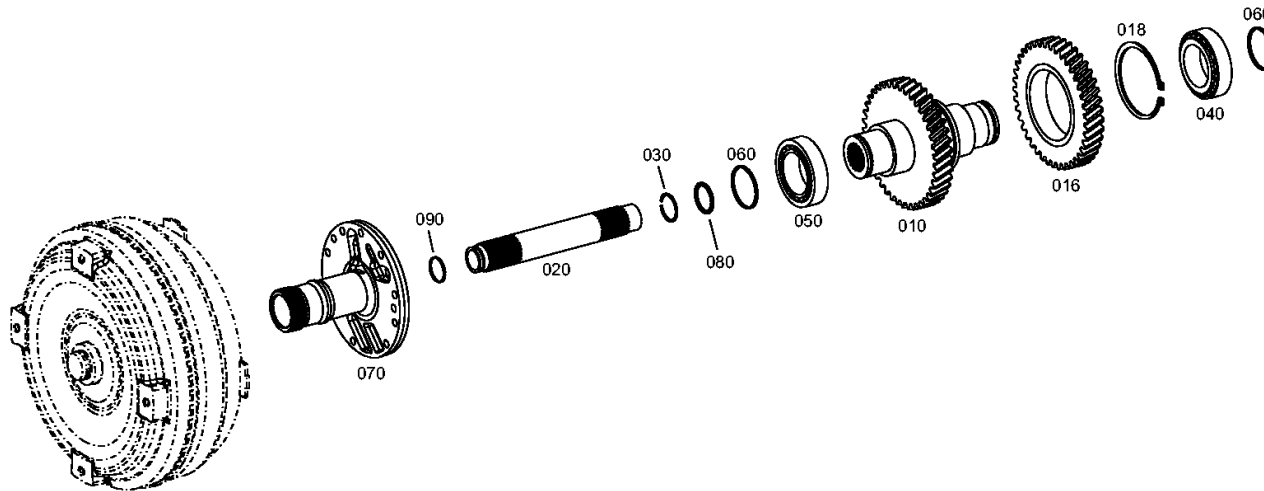
Material number: 4657.056.181

Plant: 465710202800

Material-assembly-group-no: 4657.102.028



6 WG 210 /
INPUT



Plant

Page 1 from 2

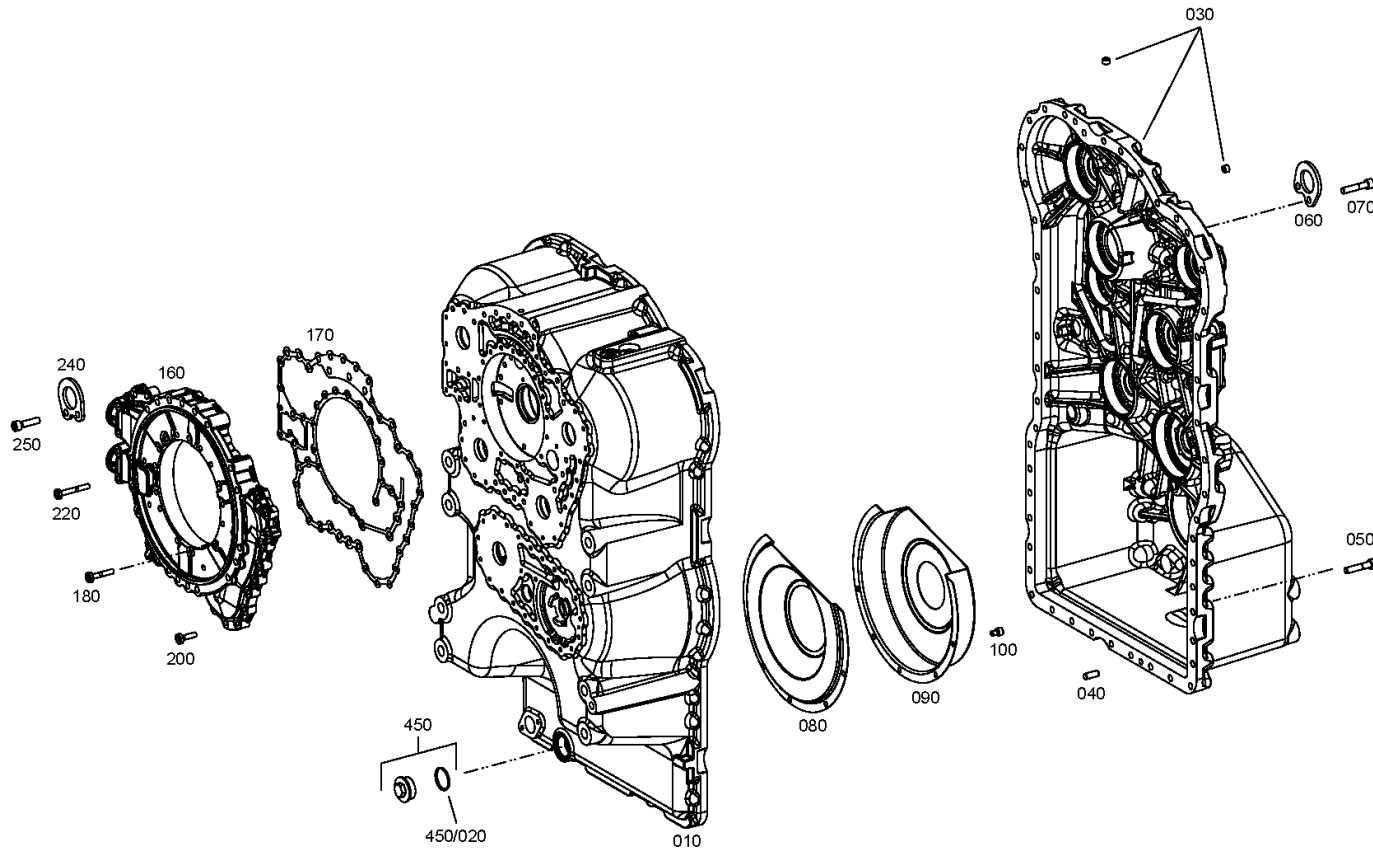
Material number: 4657.056.181

Plant: 465710108201

Material-assembly-group-no: 4657.101.082



6 WG 210 /
TRANSMISSION HOUSING



Plant

Page 2 from 2

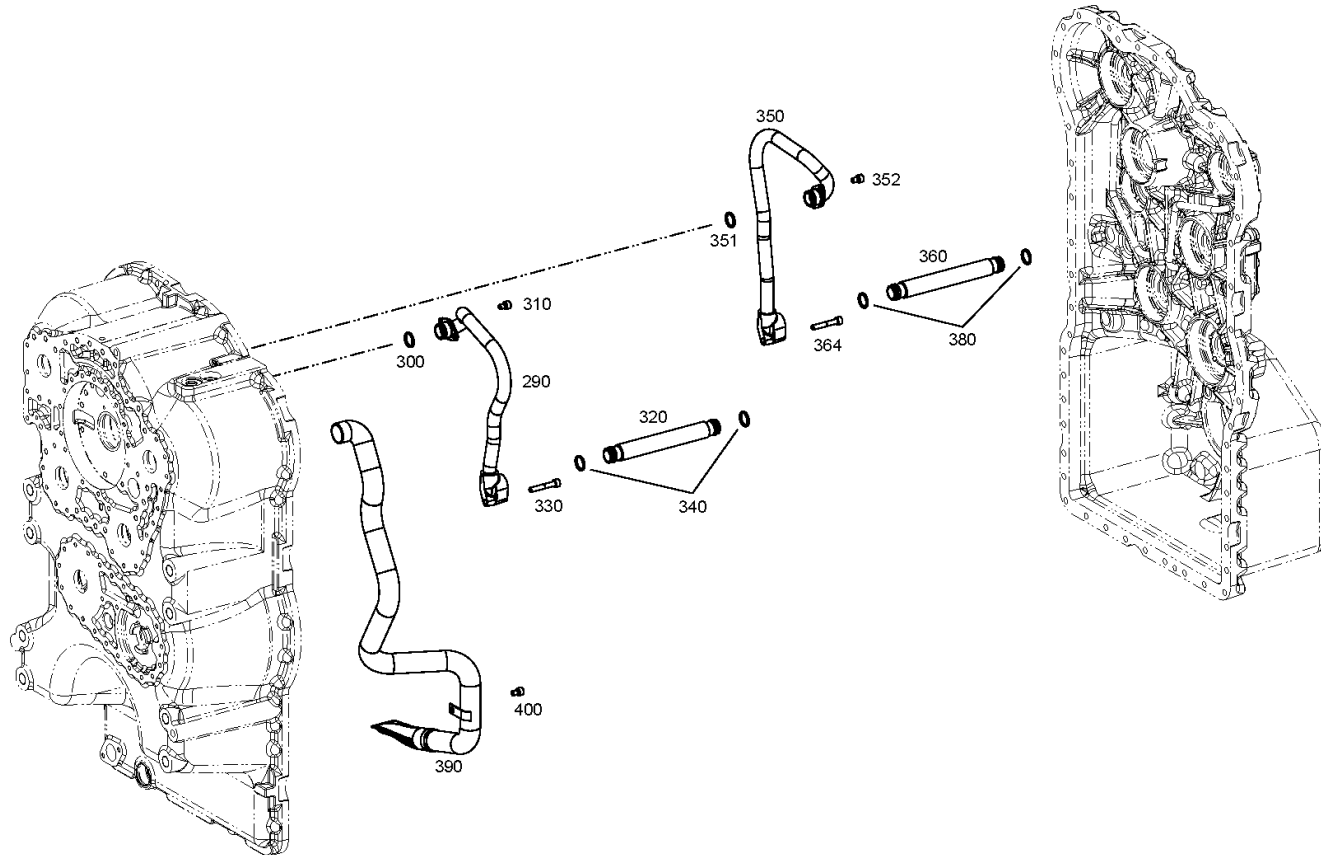
Material number: 4657.056.181

Plant: 465710108202

Material-assembly-group-no: 4657.101.082



6 WG 210 /
TRANSMISSION HOUSING



Plant

Page 1 from 1

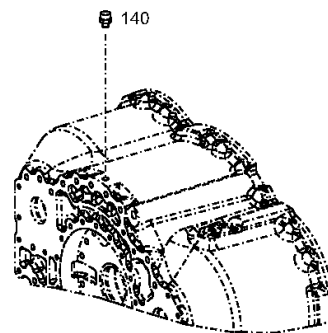
Material number: 4657.056.181

Plant: 465710140800

Material-assembly-group-no: 4657.101.408



6 WG 210 /
TRANSMISSION HOUSING



Plant

Page 1 from 1

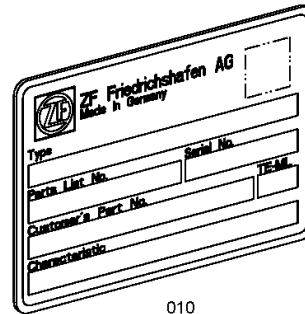
Material number: 4657.056.181

Plant: 414313900100

Material-assembly-group-no: 4143.139.001



6 WG 210 /
TYPE PLATE



010

Plant

Page 1 from 1

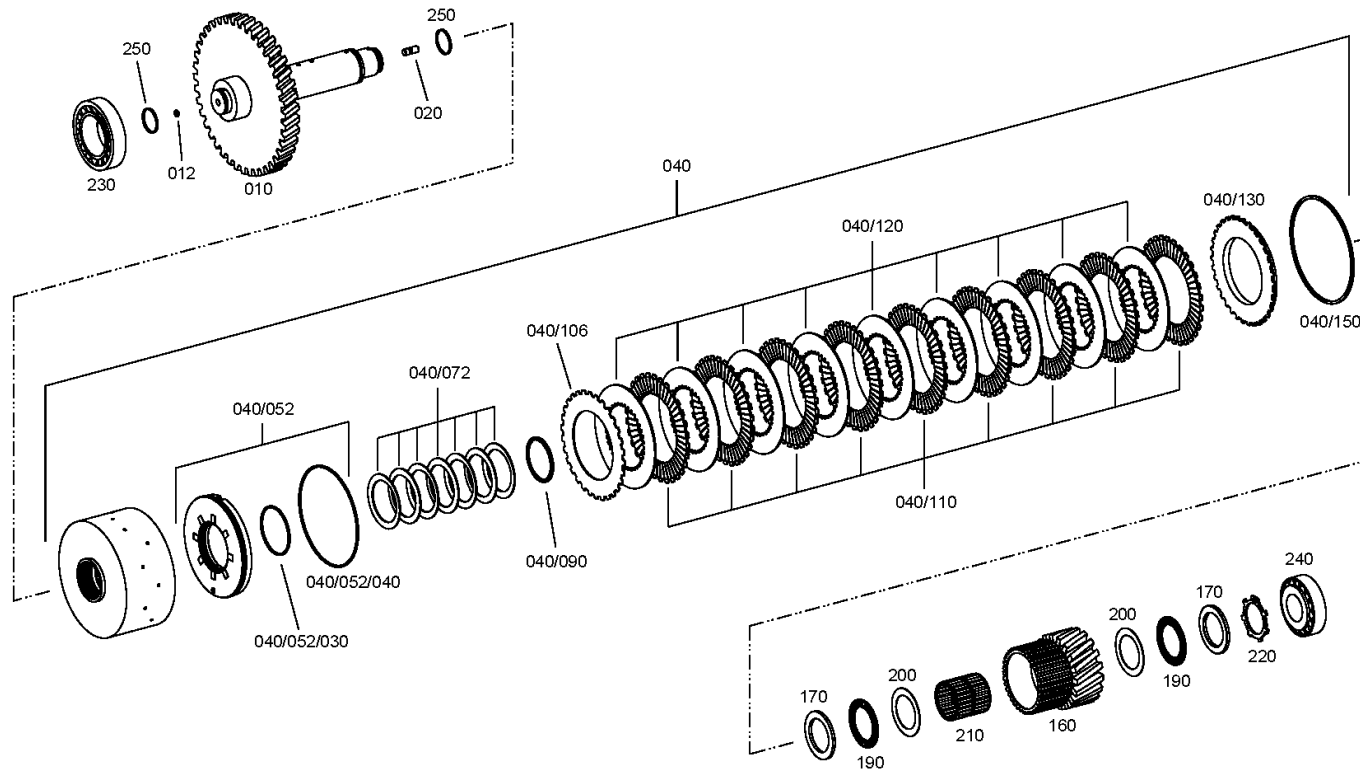
Material number: 4657.056.181

Plant: 465717103600

Material-assembly-group-no: 4657.171.036



6 WG 210 /
COUPLING



Plant

Page 1 from 1

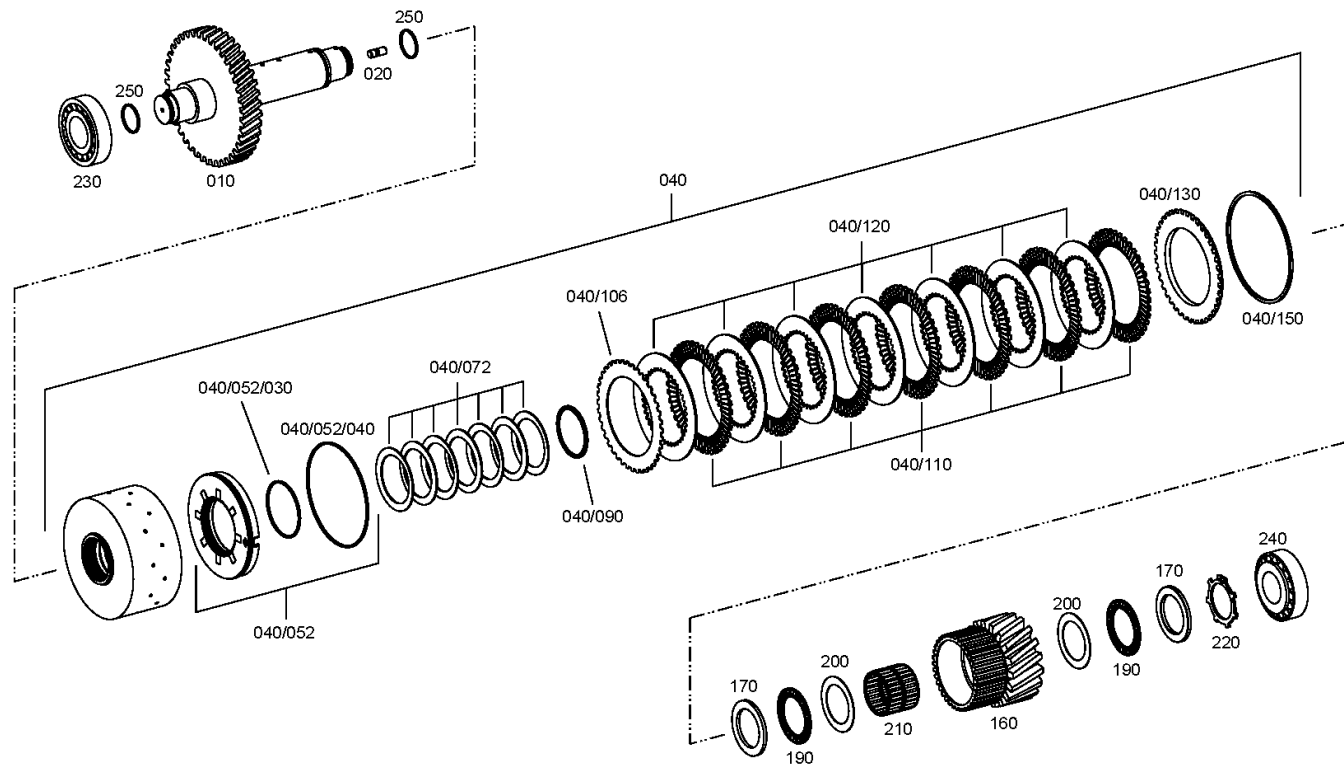
Material number: 4657.056.181

Plant: 465717202700

Material-assembly-group-no: 4657.172.027



6 WG 210 /
COUPLING



Plant

Page 1 from 1

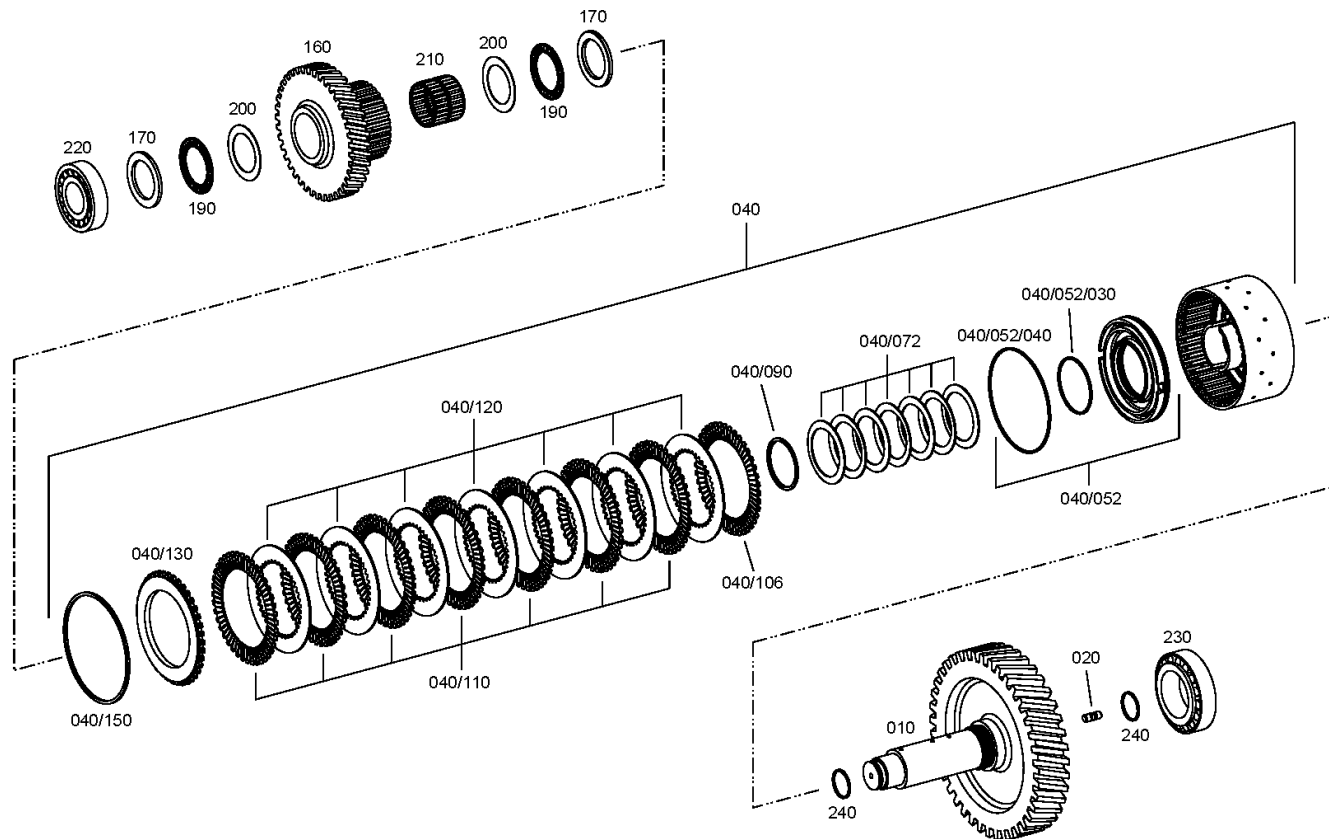
Material number: 4657.056.181

Plant: 465717302900

Material-assembly-group-no: 4657.173.029



6 WG 210 /
COUPLING



Plant

Page 1 from 1

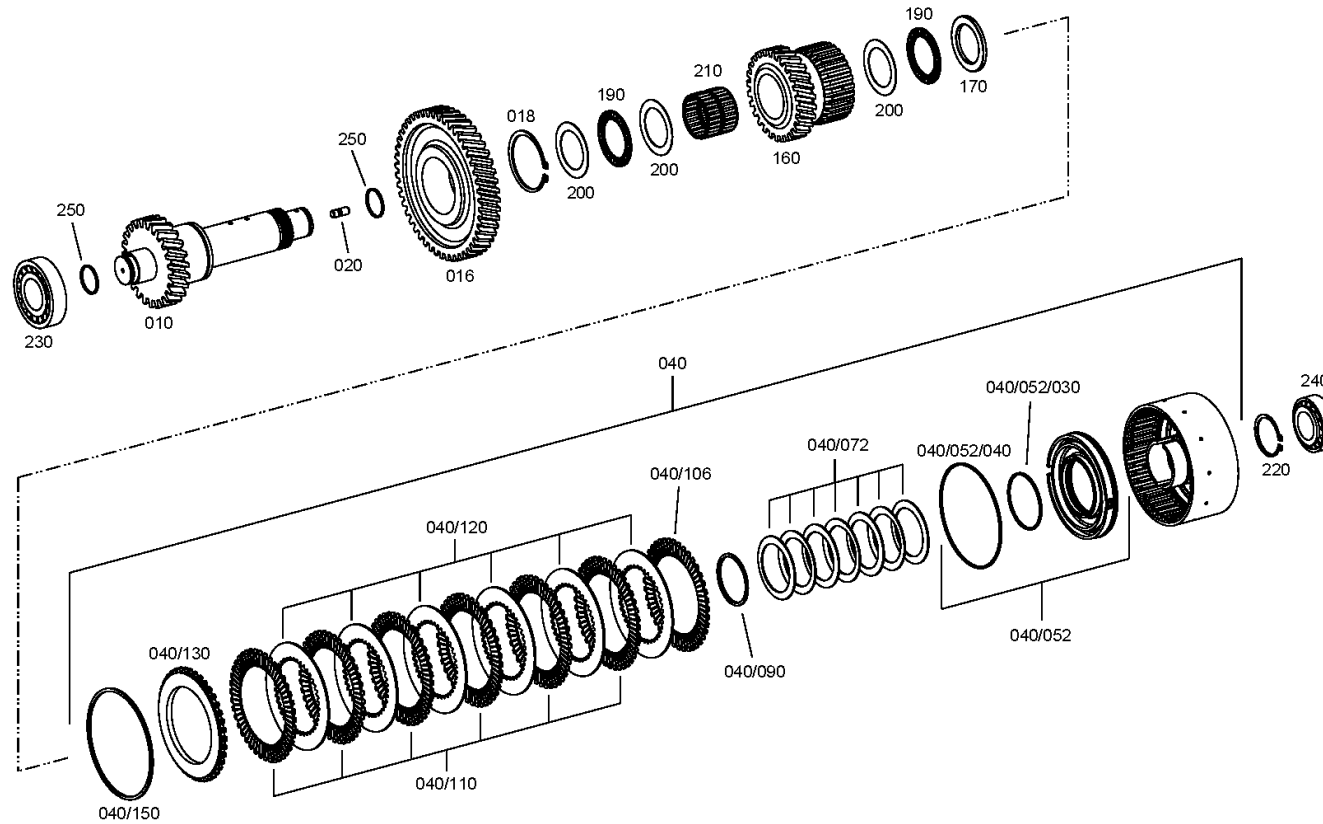
Material number: 4657.056.181

Plant: 465717403800

Material-assembly-group-no: 4657.174.038



6 WG 210 /
COUPLING



Plant

Page 1 from 1

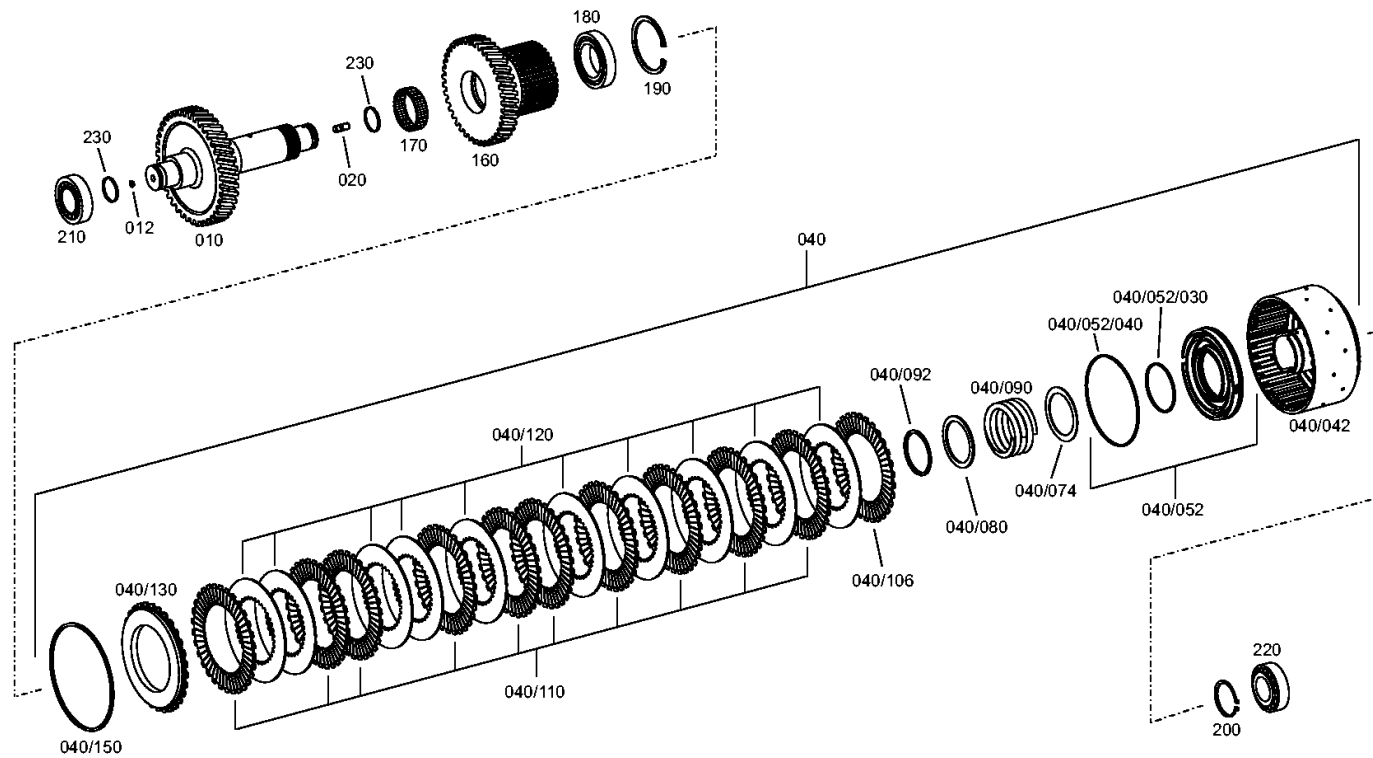
Material number: 4657.056.181

Plant: 465717501600

Material-assembly-group-no: 4657.175.016



6 WG 210 /
COUPLING



Plant

Page 1 from 1

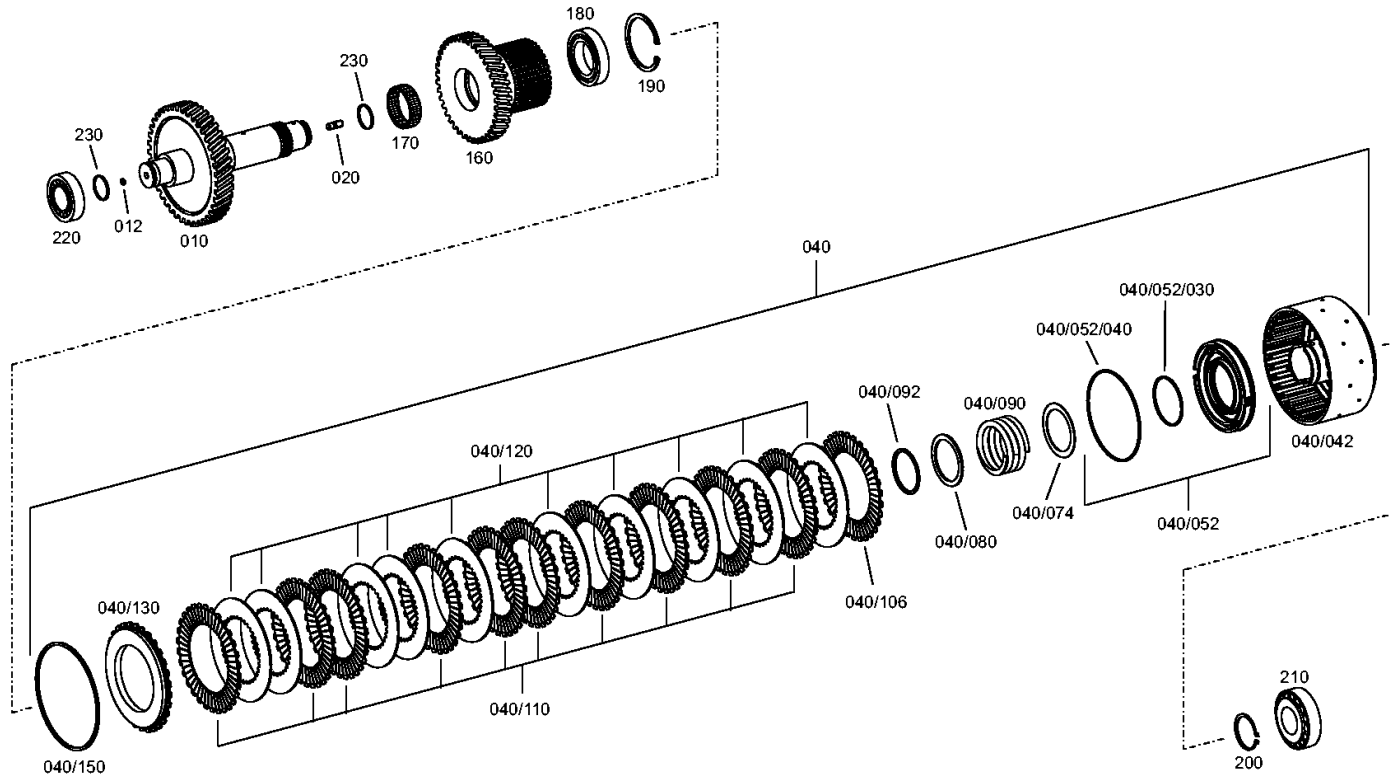
Material number: 4657.056.181

Plant: 465717601900

Material-assembly-group-no: 4657.176.019



6 WG 210 /
COUPLING



Plant

Page 1 from 1

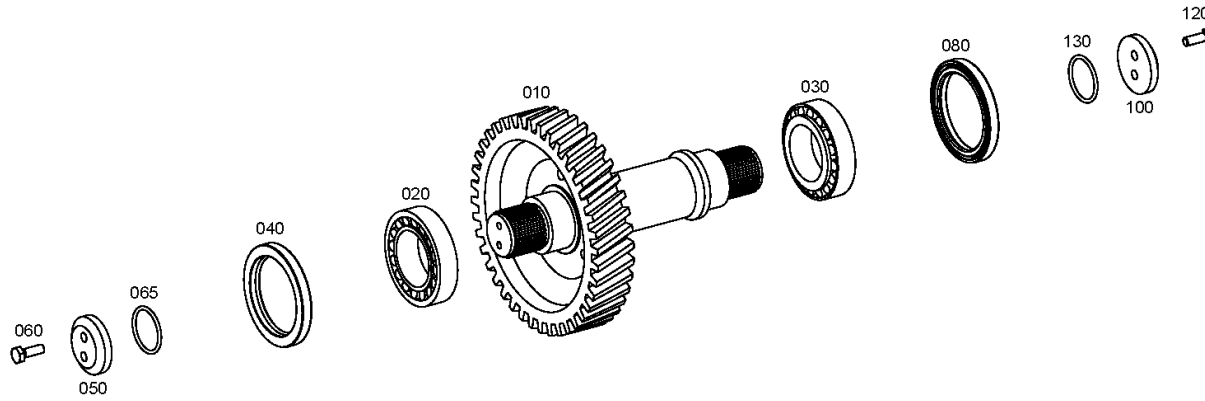
Material number: 4657.056.181

Plant: 465710301000

Material-assembly-group-no: 4657.103.010



6 WG 210 /
OUTPUT



Plant

Page 1 from 1

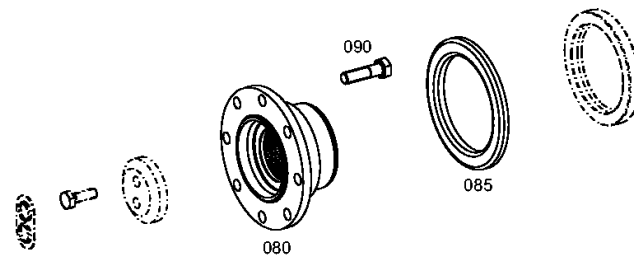
Material number: 4657.056.181

Plant: 465710342700

Material-assembly-group-no: 4657.103.427



6 WG 210 /
OUTPUT



Plant

Page 1 from 1

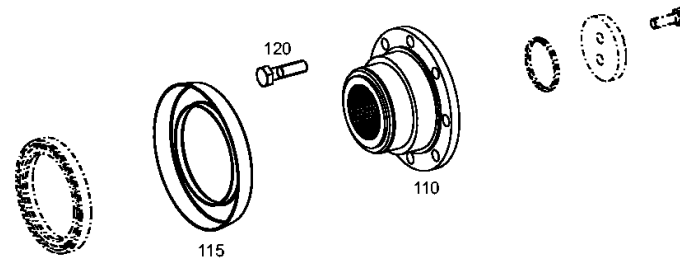
Material number: 4657.056.181

Plant: 465710344000

Material-assembly-group-no: 4657.103.440



6 WG 210 /
OUTPUT



Plant

Page 1 from 1

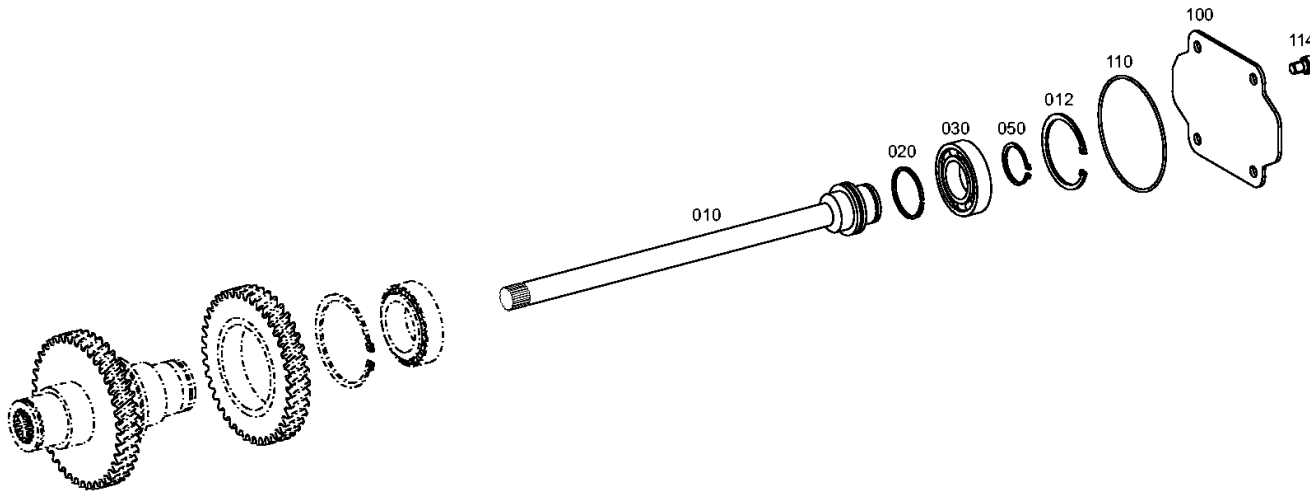
Material number: 4657.056.181

Plant: 465715400200

Material-assembly-group-no: 4657.154.002



6 WG 210 /
POWER TAKE-OFF



Plant

Page 1 from 2

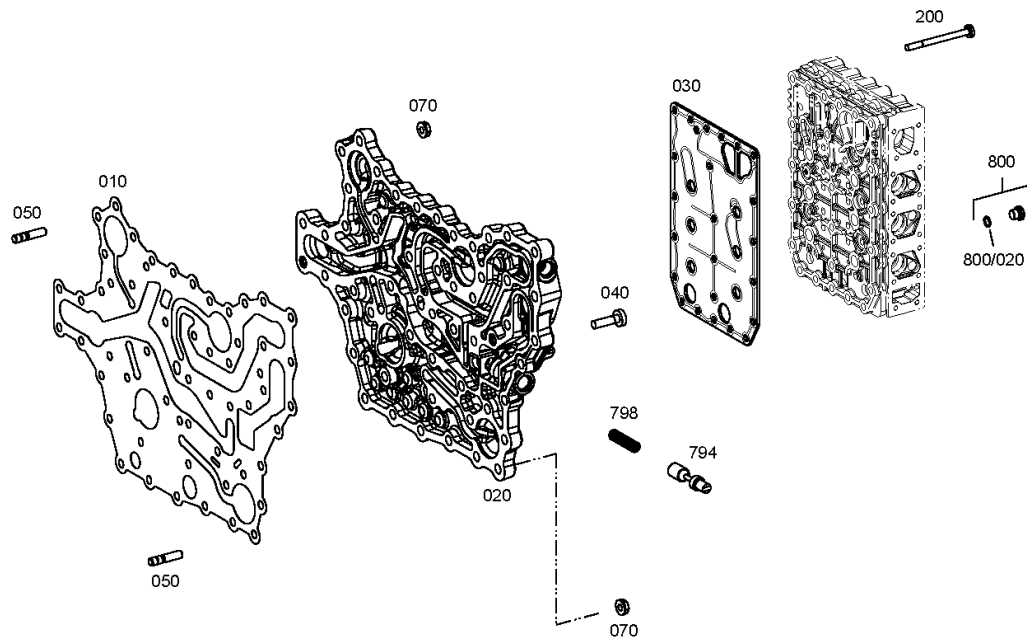
Material number: 4657.056.181

Plant: 465710601200

Material-assembly-group-no: 4657.106.012



6 WG 210 /
SHIFT SYSTEM



Plant

Page 2 from 2

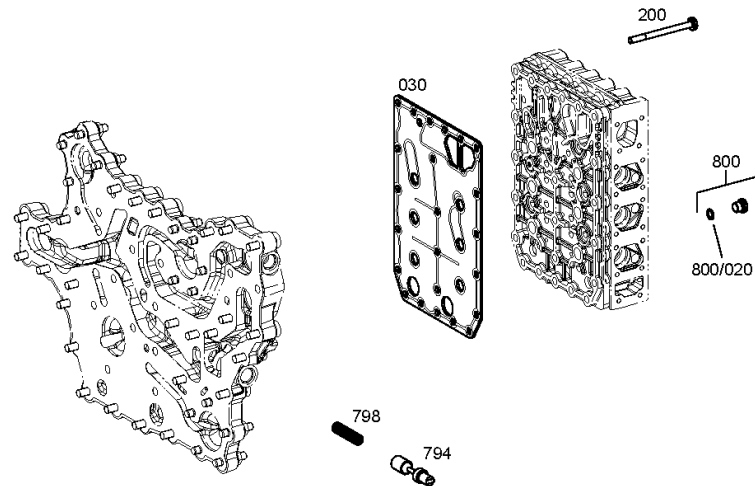
Material number: 4657.056.181

Plant: 465710601280

Material-assembly-group-no: 4657.106.012



6 WG 210 /
SHIFT SYSTEM



Plant

Page 1 from 1

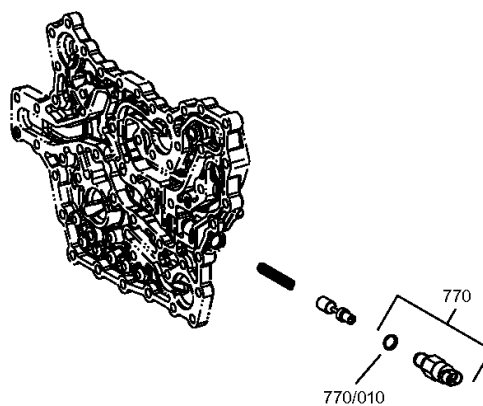
Material number: 4657.056.181

Plant: 465710640720

Material-assembly-group-no: 4657.106.407



6 WG 210 /
SHIFT SYSTEM



Plant

Page 1 from 2

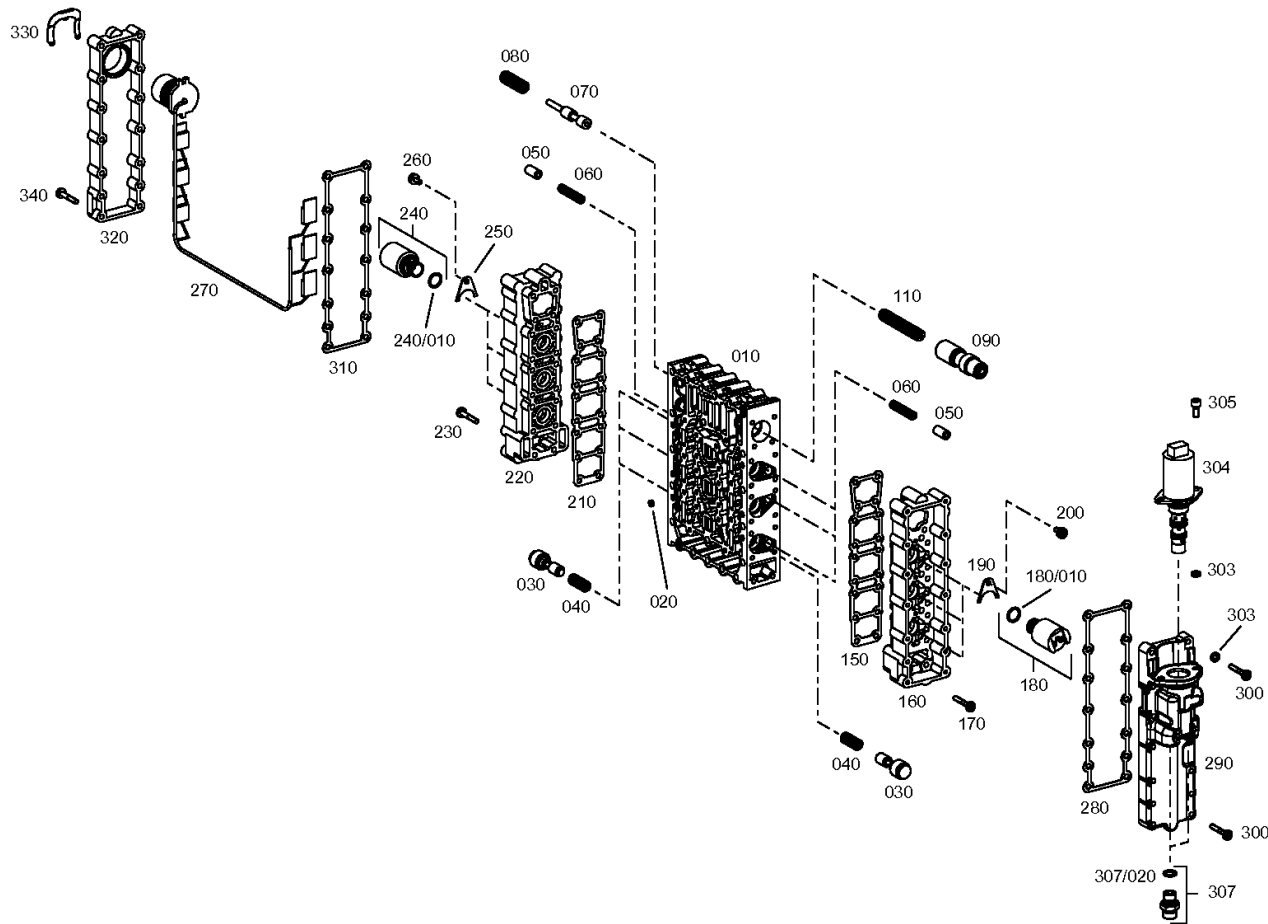
Material number: 4657.056.181

Plant: 465615901821

Material-assembly-group-no: 4656.159.018



6 WG 210 /
SHIFT SYSTEM



Plant

Page 2 from 2

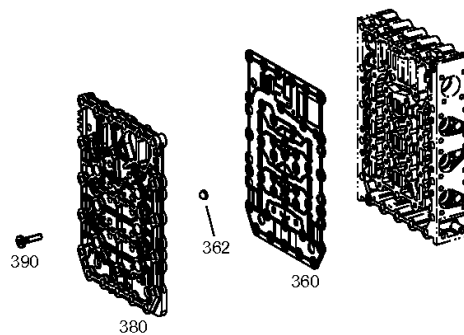
Material number: 4657.056.181

Plant: 465615901822

Material-assembly-group-no: 4656.159.018



6 WG 210 /
SHIFT SYSTEM



Plant

Page 1 from 1

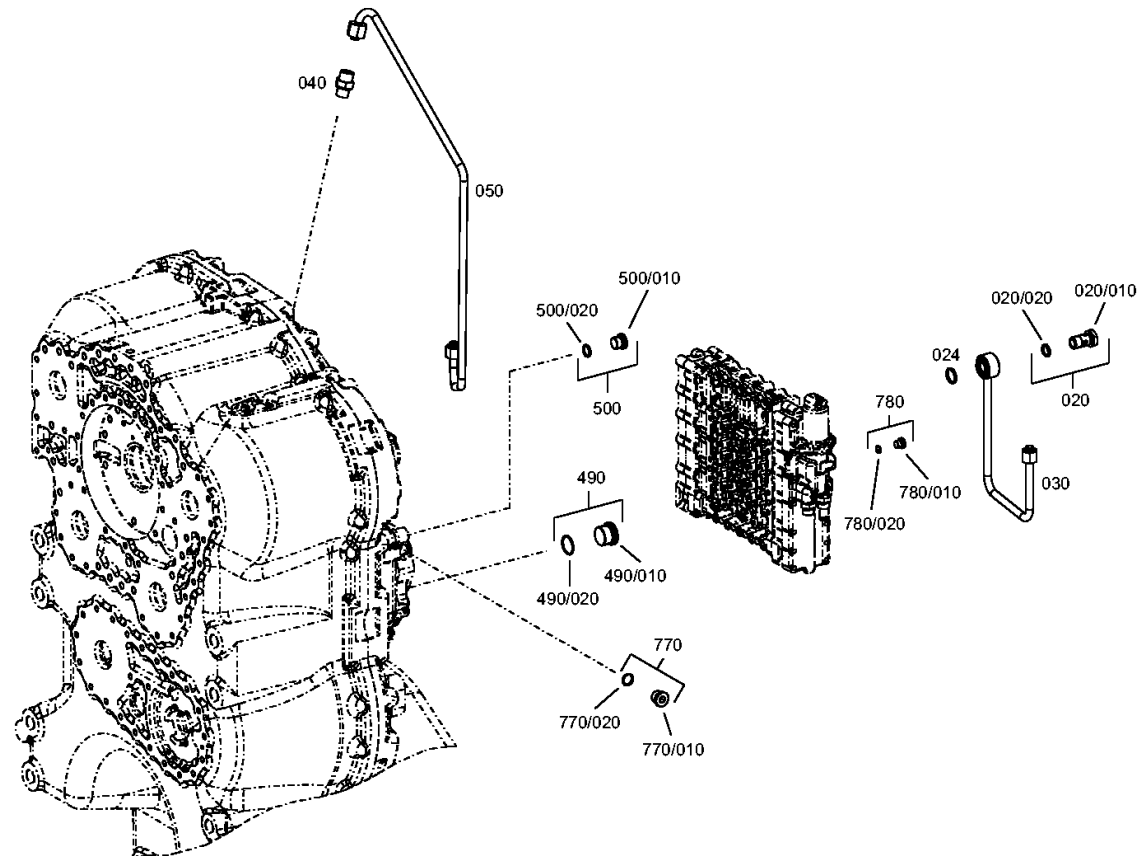
Material number: 4657.056.181

Plant: 465712301600

Material-assembly-group-no: 4657.123.016



6 WG 210 /
CONTROL UNIT



Plant

Page 1 from 1

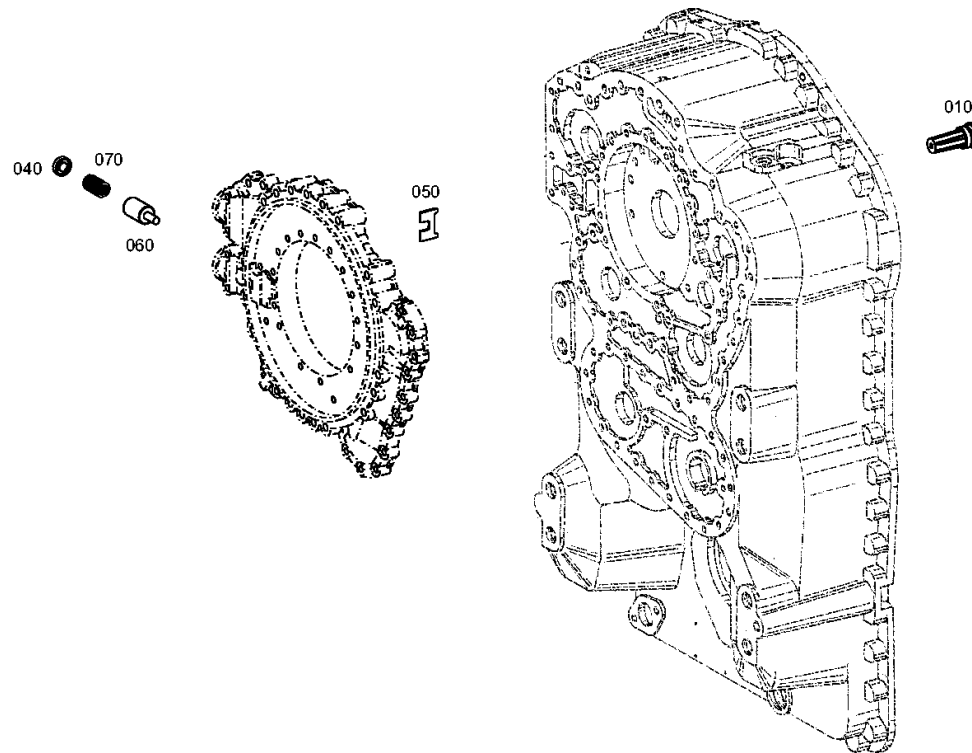
Material number: 4657.056.181

Plant: 465612000300

Material-assembly-group-no: 4656.120.003



6 WG 210 /
PRESSURE REGULATOR



Plant

Page 1 from 1

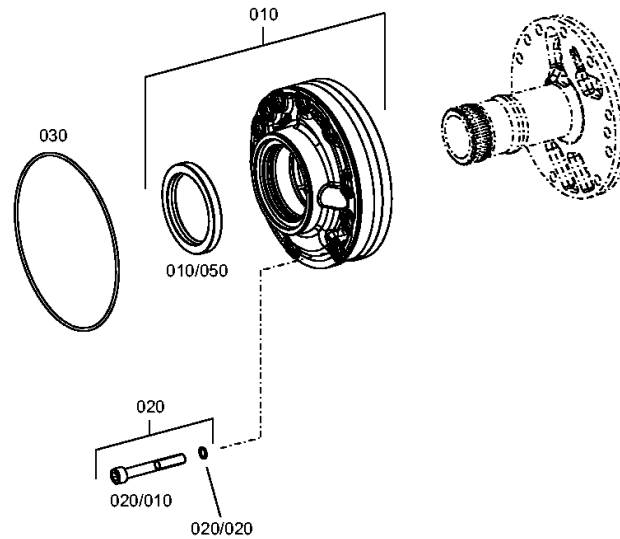
Material number: 4657.056.181

Plant: 465712200500

Material-assembly-group-no: 4657.122.005



6 WG 210 /
PRESSURE OIL PUMP



Plant

Page 1 from 1

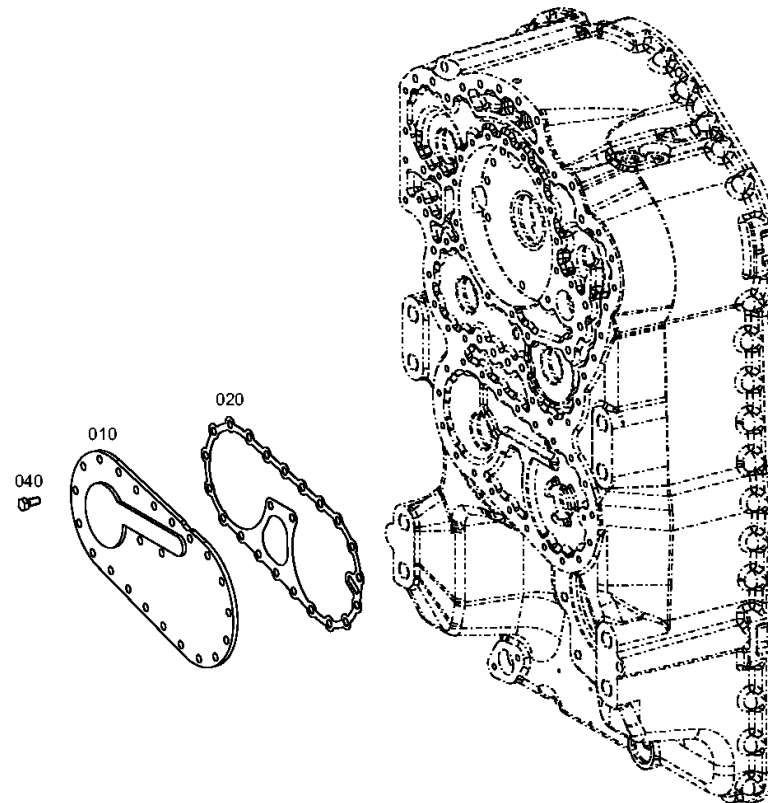
Material number: 4657.056.181

Plant: 465613700400

Material-assembly-group-no: 4656.137.004



6 WG 210 /
EMERGENCY STEERING PUMP



Plant

Page 1 from 1

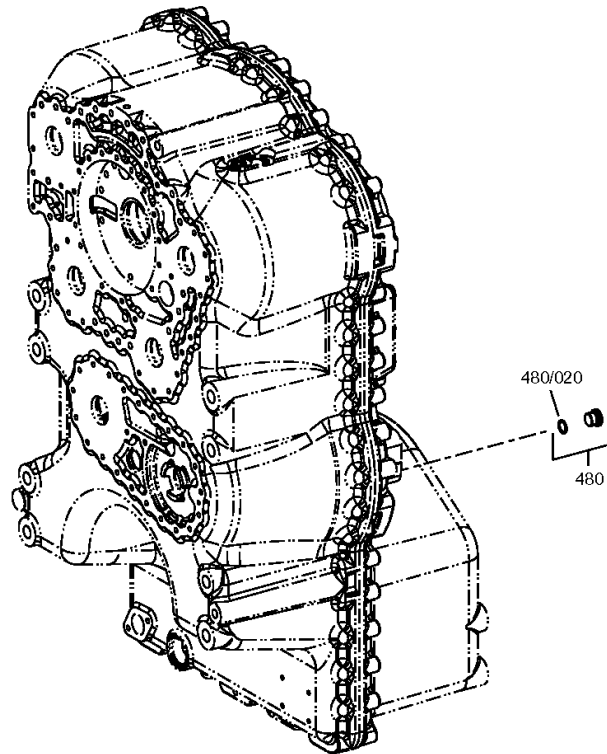
Material number: 4657.056.181

Plant: 465710700300

Material-assembly-group-no: 4657.107.003



6 WG 210 /
SPEEDOMETER



Plant

Page 1 from 1

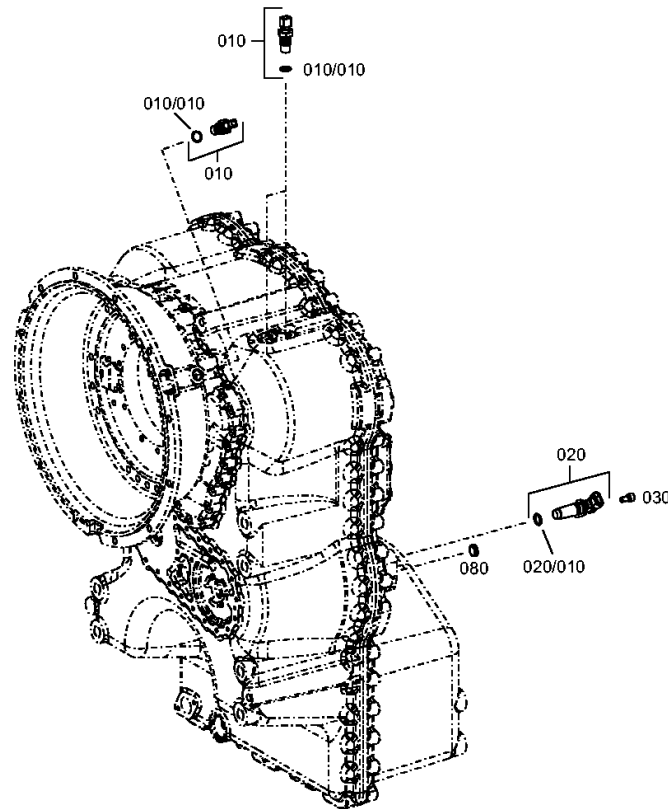
Material number: 4657.056.181

Plant: 465712500200

Material-assembly-group-no: 4657.125.002



6 WG 210 /
INDUCTIVE SENSOR



Plant

Page 1 from 1

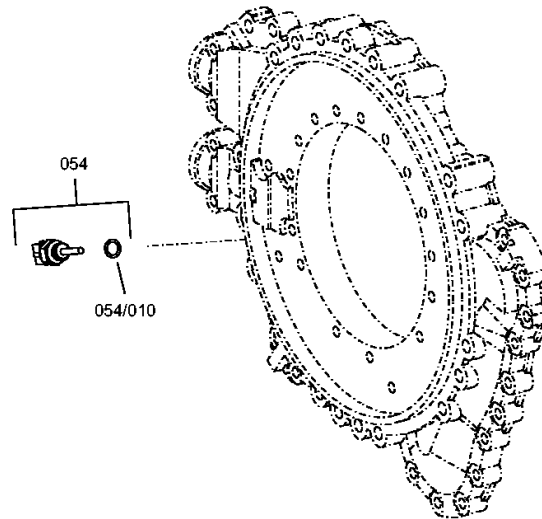
Material number: 4657.056.181

Plant: 465712400200

Material-assembly-group-no: 4657.124.002



6 WG 210 /
TEMPERATURE SENSOR



Plant

Page 1 from 1

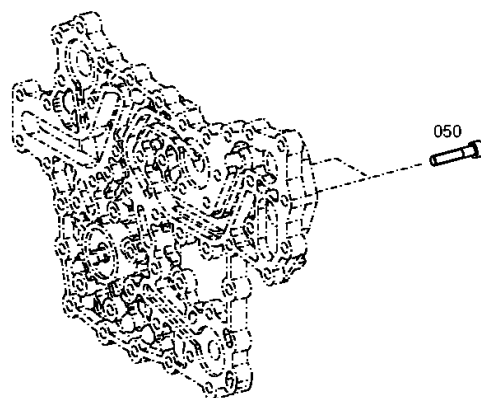
Material number: 4657.056.181

Plant: 465613800500

Material-assembly-group-no: 4656.138.005



6 WG 210 /
FILTER



Plant

Page 1 from 1

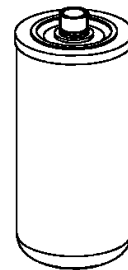
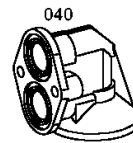
Material number: 4657.056.181

Plant: 465619940200

Material-assembly-group-no: 4656.199.402



6 WG 210 /
LOOSE PARTS



Plant

Page 1 from 1

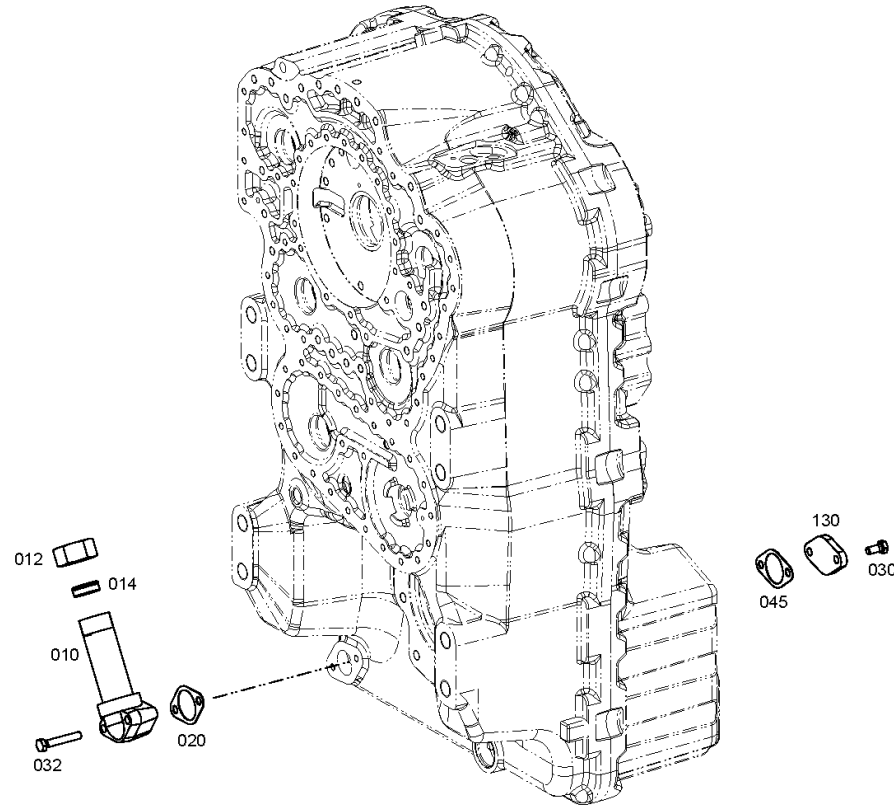
Material number: 4657.056.181

Plant: 465613100600

Material-assembly-group-no: 4656.131.006



6 WG 210 /
OIL DIPSTICK



Plant

Page 1 from 1

Material number: 4657.056.181

Plant: 465718333000

Material-assembly-group-no: 4657.183.330



6 WG 210 /
LOOSE PARTS

