



Spare Parts Catalog

APG 12

Material number: 4469.011.010

Current date: 25.05.2018

ZF Friedrichshafen AG
Hauptverwaltung
80038 Friedrichshafen
Deutschland

Telefon: +49 7541 77-0

Telefax: +49 7541 77-908000

www.zf.com

zuständiges Werk:
Passau

Notes relating to the spare parts catalog

Setup of the spare parts catalog

- Cover sheet
- Technical Cover (only in SDM print)
- Overview of figures
- Figure
- Associated parts list
- Next figure
- Associated parts list
- ...

Figure and parts list



Overview of figures

Bildtafel Figure	Sachnummer Product number	Benennung (Description)	Technische Info Technical info	Description (Benennung)	Menge Quantity	Einheit Unit
068.08.17	1316.170.001	AUSLEGER	WL	SHIFT TURRET	1	Stk
068.08.06	1316.170.031	DECKEL	WL*H-H *VM	COVER	1	Stk
068.08.14	1316.170.808	DECKEL	WL*AUSL+GEH*H-H*HF160N	COVER	1	Stk
08	1316.170.441	ANSCHLUSSTEILE	WL*NG-VORB*RG-SCHL*168N *BAJONETT	CONNECTING PARTS	1	Stk

The "gap" indicates that there is no separate graphics panel (poster) for this assembly
The parts of this assembly are shown with the same mid-section number on the figure

1 Positions and subpositions

Pos.	Sachnummer Product number	Benennung (Description)	Technische Info Technical info	Description (Benennung)	Menge Quantity	Einheit Unit
0370	1315.201.054	RUECKLAUFBOLZEN	KPL.16S151*SG*L= 79	REV.IDLER SHAFT	1	Stk
/0120	0631.329.293	SPANNSTIFT		SLOT. PIN	1	Stk

Positions marked with "/" are the individual items of a completion
For example: Position 0370 contains a centering pin with the position /0120

2 Combinations with standardized parts

Pos.	Sachnummer Product number	Benennung (Description)	Technische Info Technical info	Description (Benennung)	Menge Quantity	Einheit Unit
0630		VERSCHL.SCHR.		SCREW PLUG	1	Stk
	0636.302.067	VERSCHL.SCHR.		SCREW PLUG	1	Stk
	0634.801.249	DICHTRING	A 26 X 31	SEALING RING	1	Stk

The parts list shows the components included in the combination of standardized parts

3 Depiction of position/item number on the figure and in the parts list

01.620 - on the figure 01 relates to the assembly in which the position is included. Due to program-related reasons, it is shown on the figure.

0620 - in the parts list

Pos.	Sachnummer Product number	Benennung (Description)	Technische Info Technical info	Description (Benennung)	Menge Quantity	Einheit Unit
0620	0732.040.736	DRUCKFEDER		COMPRESSION SPRING	1	Stk

4 *-Positions

Positions marked with an * are optional i.e. inclusion in the parts list is not mandatory.
The following note is shown on the figure

je nach Stücklistenausführung
depending on spec. number
*
suivant la nomenclature
secondo la distinta base

5 Parts, dotted display

Parts with dotted display on the figure are only used for orientation of other parts

Technical Cover

Page 1 from 2

Material number: 4469.011.010



APG 12 /

Pos.	Information	Amendment number
	KUNDE:HALLESCHE BAUMASCHINEN AG	
	IDENT-NO.: WITHOUT	
	QUESTIONNAIRE:	
	PROJEKT-NR.:19202	
	VEHICLE DATA:	
	GRADER SHM-5NB/SHM-5NAD	
	MOTOR: PERKINS 1006-6 TW	
	ENGINE POWER: P=... KW IN N=.... UPM	
	INPUT TORQUE: T= ... NM IN N=.... RPM	
	CONVERTER: F&S 300	
	GETRIEBE: 6WG-180	
	TYRES: SINGLE	
	REIFEN: 14.00-24G	
	RIM PITCH CIRCLE DIA: 335 MM	
	V-MAX.: 39,0 KM/H	
	QUANTITY OF AXLES	
	RADSTAND: 1540 MM	
	PRODUCT DESCRIPTION:	
	ACHSANORDNUNG: HINTERACHSE TANDEM	
	UEBERSETZUNG GES:I= 20,66	
	PLANETARY DRIVE:I=6,40 P4-245-52	
	KEGELTRIEB: I= 2,77 Z=36/13	
	BEFESTIGUNG: FEDERSPUR L= 936	
	FLANSCHMASS: L=2116	
	KETTENTRIEB: I= 1,166	
	SPURWEITE: L=2086	
	BRAKE:	
	MULTIPLE-DISC BRAKE: HYDR. 230X160	
	BELAGLAMELLEN: 4 STUECK (BORG WARNER)	
	BRAKE CALCULATION	
	DIFF.CARRIER:	
	TYP/GROESSE: HK-411	
	DREHRICHTUNG: MUL/ABTR.	

Technical Cover

Page 2 from 2

Material number: 4469.011.010



APG 12 /

Pos.	Information	Amendment number
	RING GEAR: SPIRAL DIRECTION LEFT	
	SPUR GEAR DRIVE: WITHOUT	
	POSITION OF RING GEAR: LEFT	
	FLANGE POSITION CONE-PULLEY-DRIVE: CENTER RIGHT	
	FLANGE MECH.7C	
	LIMITED-SLIP DIFFERENTIAL	
	TYP/GROESSE: NO-SPIN 306S-138	
	BEVEL SIDE GEAR SPLINE: N 50X1,25	

	DRAWINGS:	
	SCHNITT: 4469 011 011(0)	
	SCHNITT: 4472 020 033	
	EINBAU: 4469 611 006(0)	
	EINBAU: 4472 620 043(0)	
	ENTWURF: 4469 511 007(0)	
	TEST SPECIFICATION	
	ASSEMBLY INSTRUCTION:	
	PISTON STROKE 3,2-3,6 MM	
	OIL CAPACITY:	
	AXLE: CA.16,00L	
	PENDELLAGERUNG: CA.JE 6,50L	
	PLANETENTRIEB/JE:CA. 5,30L	
	GESAMT: CA. 50,20L	
	OELFUELLUNG: NUR PLANETENTRIEB	
	OIL SPECIFICATION:SAE 90 LS SPEZ.MIL-L 2105 D	
	BRAKE CONTROL: ATF-OIL/MOTOROIL 10 W	
	GESAMT-TROCKENMASSE: 1199KG	
	COLOR: 2 YELLOW RAL 1006	
	PACKING:	
	MISCELLANEOUS/REMARKS:	

Assembly group overview

Page 1 from 1

Material number: 4469.011.010



Graphics	Pos.	Material number	Name	Quantity	Amend. no.	Techn. Info.
	50	4472.020.032	RP 765	4		
	40	4460.015.101	HK	1		
4469101001 01	20	4469.101.001	AXLE CASING	1		
4469101001 02	30	4469.101.400	AXLE CASING	1		

Parts list

Page 1 from 2

Material number: 4469.011.010

Material-assembly-group-no: 4460.015.101



APG 12 /

Pos.	Material number	Customer material	Name	Quantity	ME	Amend. no.	Techn. Info.	Rep kit	Alternative material
20	4460.215.211		AXLE DRIVE HOUSING	1					
50	0750.117.141		TAPERED ROLLER BEARING	1			85,000X125,412X25,400		
100	0750.117.142		TAPER ROLLER BEARING	1			82,550X133,350X33,338		
140	---		SPACER RING	1					
---	0730.161.428		SPACER RING	1			S=7,3		
---	0730.161.429		SPACER RING	1			S=7,4		
---	0730.161.430		SPACER RING	1			S=7,5		
---	0730.161.431		SPACER RING	1			S=7,6		
---	0730.161.432		SPACER RING	1			S=7,7		
---	0730.161.433		SPACER RING	1			S=7,9		
---	0730.161.434		SPACER RING	1			S=8,0		
---	0730.161.803		SPACER RING	1			S=8,1		
---	0730.161.804		SPACER RING	1			S=8,2		
---	0730.161.805		SPACER RING	1			S=8,3		
---	0730.161.806		SPACER RING	1			S=8,4		
---	0730.161.807		SPACER RING	1			S=8,5		
---	0730.161.808		SPACER RING	1			S=8,6		
---	0730.161.809		SPACER RING	1			S=8,7		
---	0730.161.810		SPACER RING	1			S=8,8		
---	0730.161.811		SPACER RING	1			S=8,9		
---	0730.161.812		SPACER RING	1			S=9,0		
---	0730.162.918		SPACER RING	1			A=7,8		
---	0730.162.919		SPACER RING	1			A=7,82		
---	0730.162.920		SPACER RING	1			A=7,84		
---	0730.162.921		SPACER RING	1			A=7,86		
---	0730.162.922		SPACER RING	1			A=7,88		
---	0730.162.923		SPACER RING	1			A=7,92		
---	0730.162.924		SPACER RING	1			A=7,94		
---	0730.162.925		SPACER RING	1			A=7,96		
---	0730.162.926		SPACER RING	1			A=7,98		
---	0730.162.927		SPACER RING	1			A=8,02		
---	0730.162.928		SPACER RING	1			A=8,04		
---	0730.162.929		SPACER RING	1			A=8,06		
---	0730.162.930		SPACER RING	1			A=8,08		

Parts list

Page 2 from 2

Material number: 4469.011.010

Material-assembly-group-no: 4460.015.101



APG 12 /

Pos.	Material number	Customer material	Name	Quantity	ME	Amend. no.	Techn. Info.	Rep kit	Alternative material
---	0730.162.931		SPACER RING	1			A=8,12		
---	0730.162.932		SPACER RING	1			A=8,14		
---	0730.162.933		SPACER RING	1			A=8,16		
---	0730.162.934		SPACER RING	1			A=8,18		
200	0735.372.249		TAPERED ROLLER BEARING	1			70,000X140,000X39,000		
210	0750.117.875		TAPERED ROLLER BEARING	1			60,000X125,000X37,000		
220	4460.321.098		ADJUSTING NUT	2					
232	0631.329.087		SLOTTED PIN	2			8X45		
280	0734.300.621		SHAFT SEAL	1		Z00033029910	90,000X140,000X11,000/19,000		
296	0730.105.324		WASHER	1			51X76,5X5		
322	---		WASHER	1					
---	0730.004.169		WASHER	1			A=0,70 IN 0730 003 999(2)		
---	0730.004.170		WASHER	1			A=0,80 IN 0730 003 999(2)		
---	0730.004.171		WASHER	1			A=0,90 IN 0730 003 999(2)		
---	0730.004.172		WASHER	1			A=1,00 IN 0730 003 999(2)		
---	0730.004.173		WASHER	1			A=1,10 IN 0730 003 999(2)		
---	0730.004.174		WASHER	1			A=1,20 IN 0730 003 999(2)		
---	0730.004.175		WASHER	1			A=1,30 IN 0730 003 999(2)		
---	0730.004.176		WASHER	1			A=1,40 IN 0730 003 999(2)		
---	0730.004.177		WASHER	1			A=1,50 IN 0730 003 999(2)		
---	0730.004.002		WASHER	1			A=0,2		
---	0730.004.001		WASHER	1			A=0,1		
326	0737.502.146		SLOTTED NUT	1			M50X1,5X18		
420	4460.325.178		INPUT FLANGE	1		K01160/0510	Z=46		
430	4460.325.207		DUST PROTECTION	1		K01160/0510			
500	4460.215.337		BEVEL GEAR SET	1					
550	0501.002.929		DIFFERENTIAL	1					
570	4461.221.517		DIFF.CASE	1					
790	0636.020.207		HEXAGON SCREW	12			M14X1,5X100		
810	0750.108.014		LOCKING SCREW	20			M16X1,5X35		
900	0770.033.497		WASHER	12			15 X 28 X 2,5		

Plant

Page 1 from 1

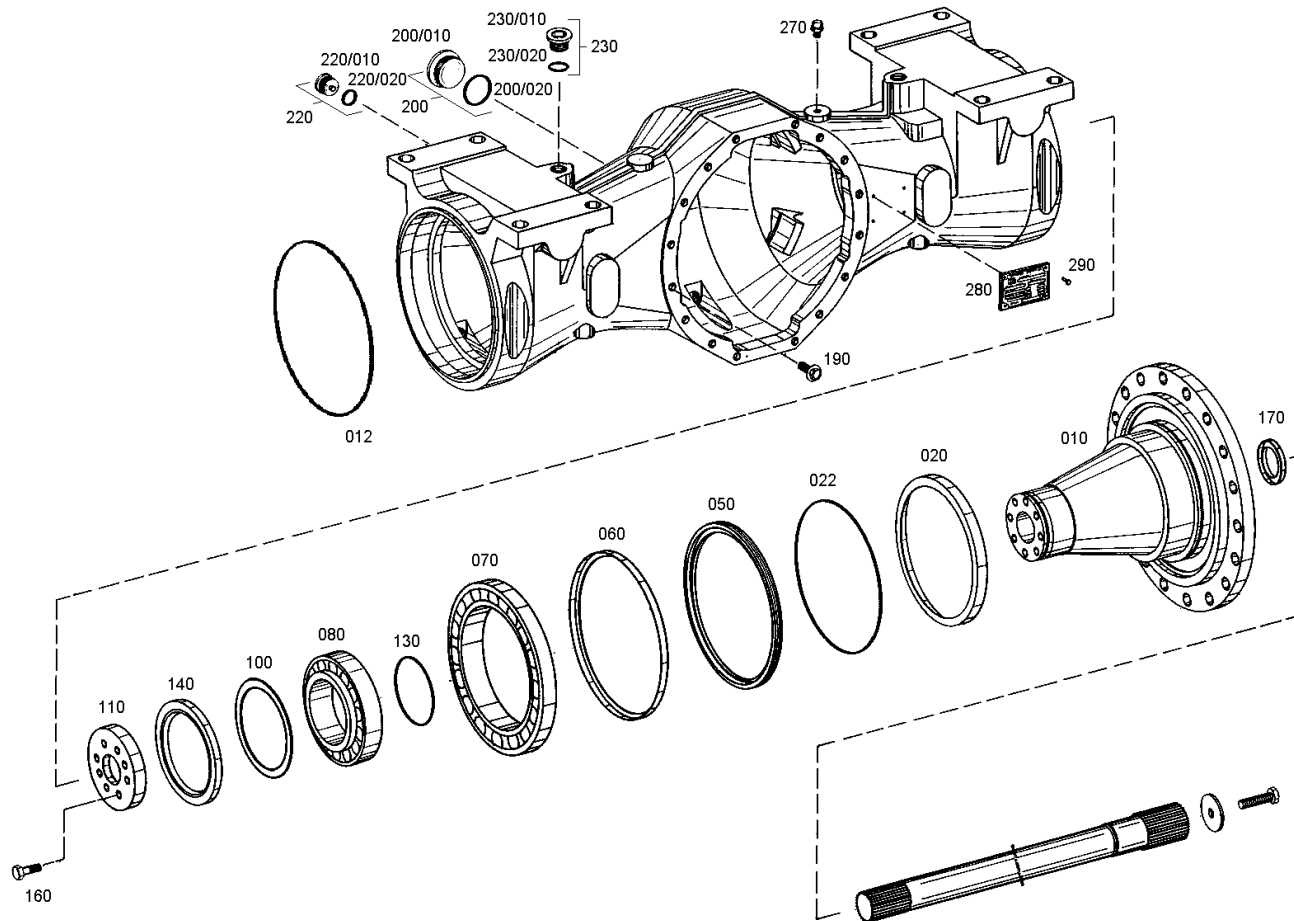
Material number: 4469.011.010

Plant: 446910100101

Material-assembly-group-no: 4469.101.001



APG 12 /
AXLE CASING



Plant

Page 1 from 1

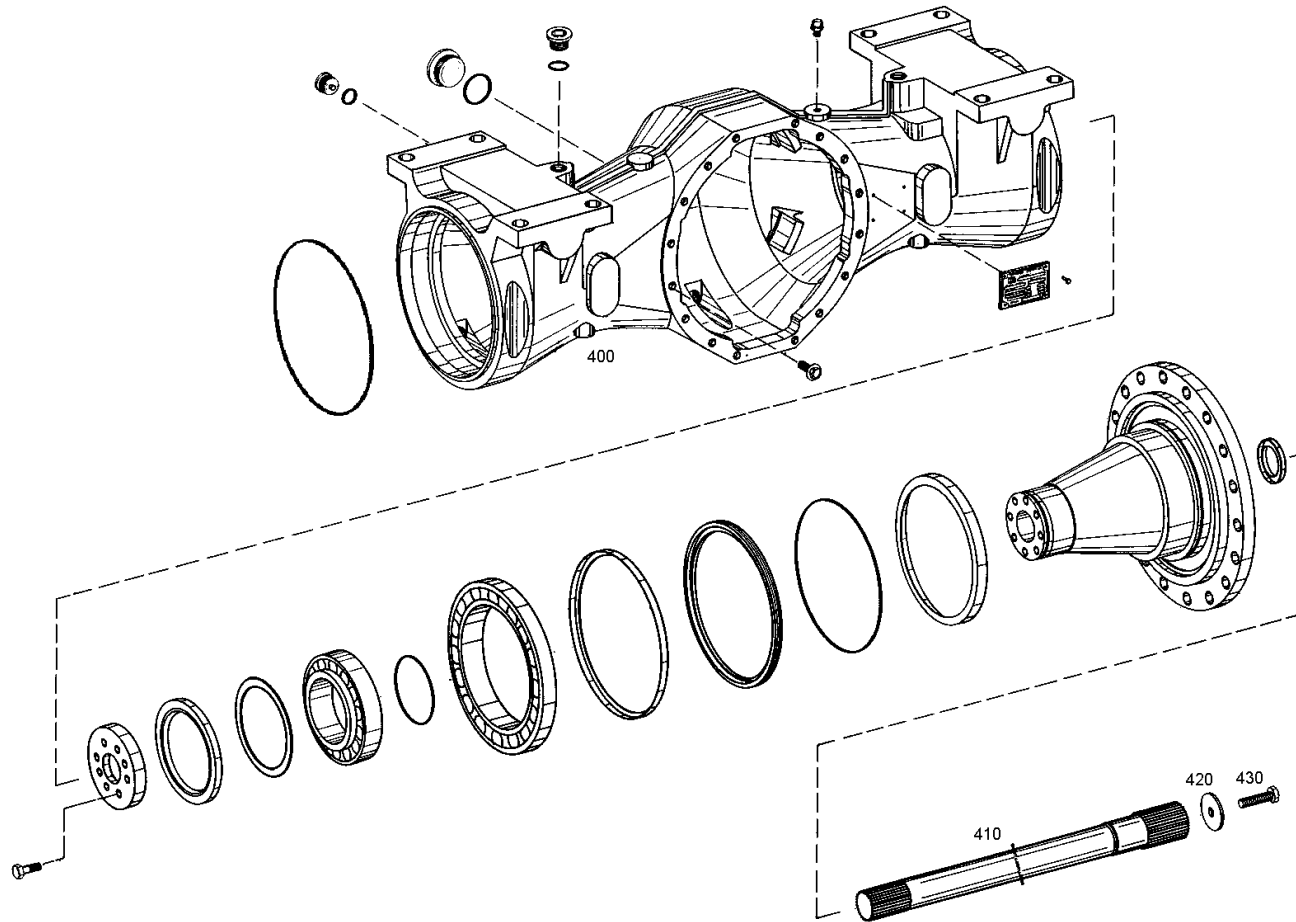
Material number: 4469.011.010

Plant: 446910100102

Material-assembly-group-no: 4469.101.400



APG 12 /
AXLE CASING



Plant

Page 1 from 1

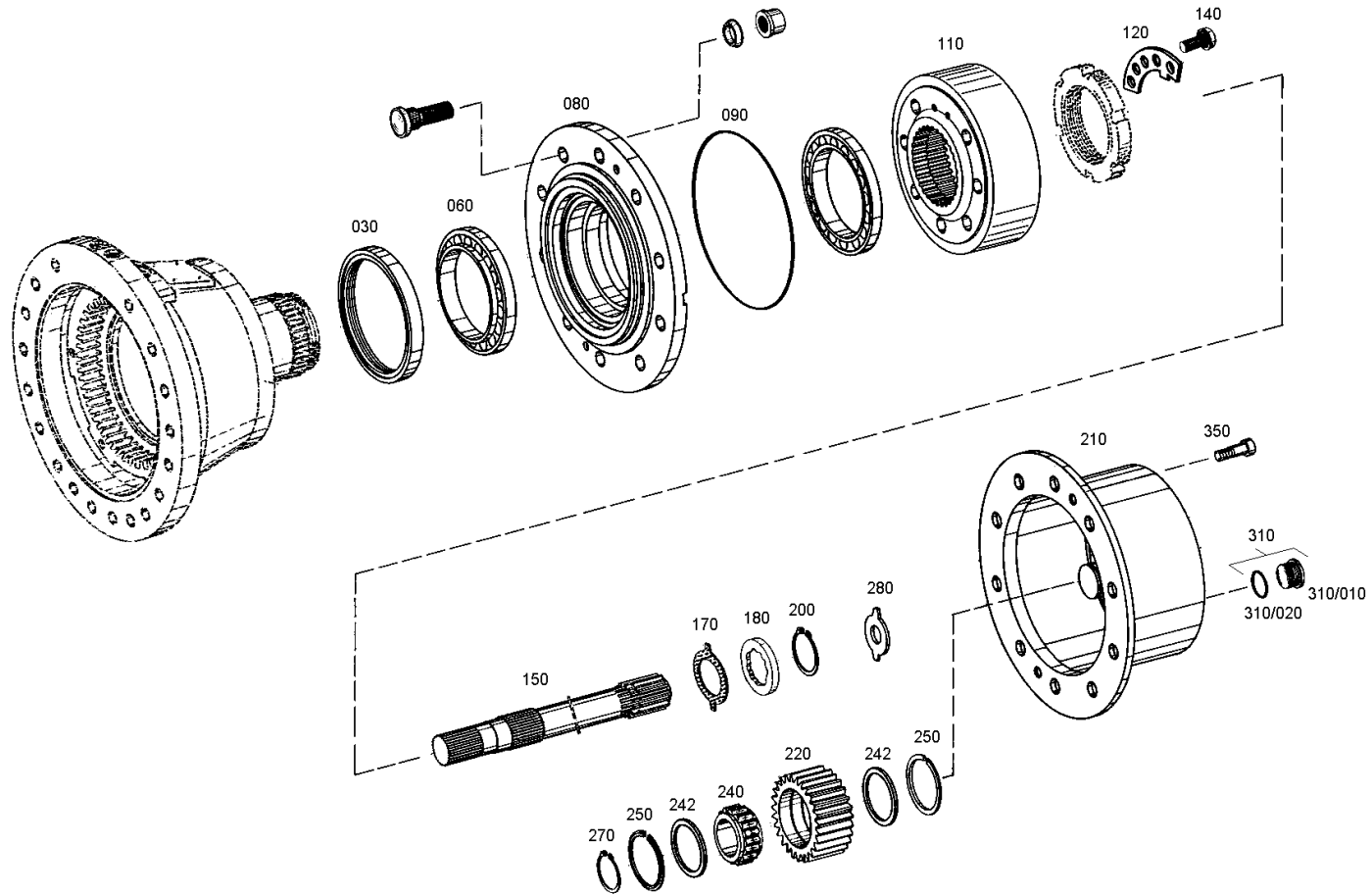
Material number: 4472.020.032

Plant: 447213000101

Material-assembly-group-no: 4472.130.001



APG 12 /
OUTPUT



Plant

Page 1 from 1

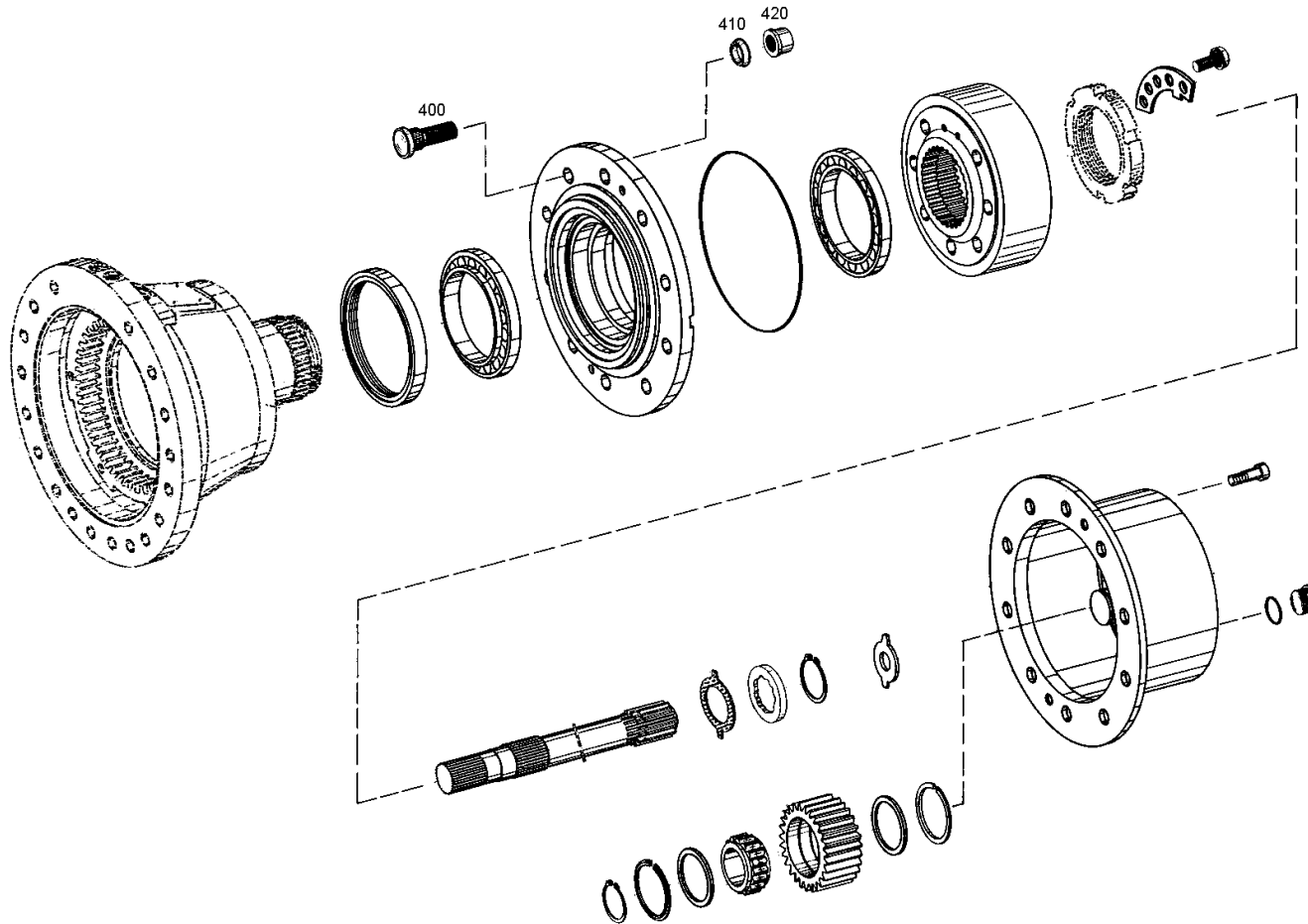
Material number: 4472.020.032

Plant: 447213000102

Material-assembly-group-no: 4472.130.400



APG 12 /
OUTPUT



Plant

Page 1 from 1

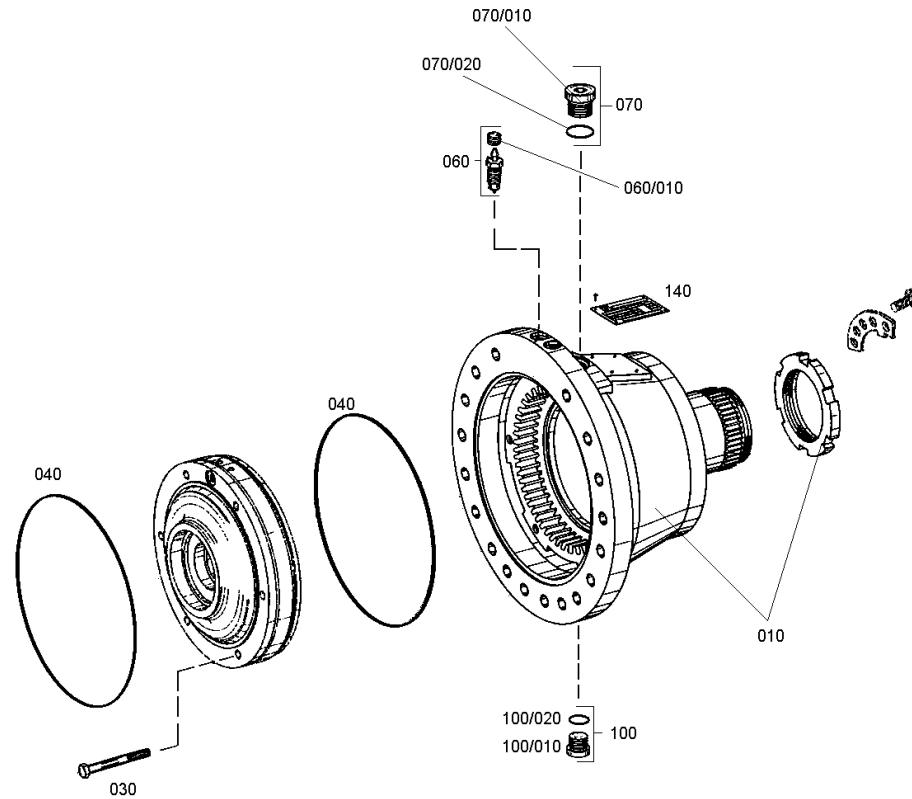
Material number: 4472.020.032

Plant: 447213100100

Material-assembly-group-no: 4472.131.001



APG 12 /
HUB CARRIER



Plant

Page 1 from 1

Material number: 4472.020.032

Plant: 447213200100

Material-assembly-group-no: 4472.132.001



APG 12 /
BRAKE

