



# Spare Parts Catalog

AP-R 715

Material number: 4472.004.077

Current date: 11.07.2023

ZF Friedrichshafen AG  
Hauptverwaltung  
80038 Friedrichshafen  
Deutschland

Telefon: +49 7541 77-0

Telefax: +49 7541 77-908000

[www.zf.com](http://www.zf.com)

zuständiges Werk:  
Passau

# Notes relating to the spare parts catalog

## Setup of the spare parts catalog

- Cover sheet
- Technical Cover (only in SDM print)
- Overview of figures
- Figure
- Associated parts list
- Next figure
- Associated parts list
- ...

## Figure and parts list



## Overview of figures

Bildtafel Figure	Sachnummer Product number	Benennung (Description)	Technische Info Technical info	Description (Benennung)	Menge Quantity	Einheit Unit
068.08.17	1316.170.001	AUSLEGER	WL	SHIFT TURRET	1	Stk
068.08.06	1316.170.031	DECKEL	WL*H-H *VM	COVER	1	Stk
068.08.14	1316.170.808	DECKEL	WL*AUSL+GEH*H-H*HF160N	COVER	1	Stk
08	1316.170.441	ANSCHLUSSTEILE	WL*NG-VORB*RG-SCHL*168N *BAJONETT	CONNECTING PARTS	1	Stk

The "gap" indicates that there is no separate graphics panel (poster) for this assembly  
The parts of this assembly are shown with the same mid-section number on the figure

### 1 Positions and subpositions

Pos.	Sachnummer Product number	Benennung (Description)	Technische Info Technical info	Description (Benennung)	Menge Quantity	Einheit Unit
0370	1315.201.054	RUECKLAUFBOLZEN	KPL.16S151*SG*L= 79	REV.IDLER SHAFT	1	Stk
/0120	0631.329.293	SPANNSTIFT		SLOT. PIN	1	Stk

Positions marked with "/" are the individual items of a completion  
For example: Position 0370 contains a centering pin with the position /0120

### 2 Combinations with standardized parts

Pos.	Sachnummer Product number	Benennung (Description)	Technische Info Technical info	Description (Benennung)	Menge Quantity	Einheit Unit
0630		VERSCHL.SCHR.		SCREW PLUG	1	Stk
	0636.302.067	VERSCHL.SCHR.		SCREW PLUG	1	Stk
	0634.801.249	DICHTRING	A 26 X 31	SEALING RING	1	Stk

The parts list shows the components included in the combination of standardized parts

### 3 Depiction of position/item number on the figure and in the parts list

01.620 - on the figure      01 relates to the assembly in which the position is included. Due to program-related reasons, it is shown on the figure.

0620 - in the parts list

Pos.	Sachnummer Product number	Benennung (Description)	Technische Info Technical info	Description (Benennung)	Menge Quantity	Einheit Unit
0620	0732.040.736	DRUCKFEDER		COMPRESSION SPRING	1	Stk

### 4 \*-Positions

Positions marked with an \* are optional i.e. inclusion in the parts list is not mandatory.  
The following note is shown on the figure

je nach Stücklistenausführung  
depending on spec. number  
\*  
suivant la nomenclature  
secondo la distinta base

### 5 Parts, dotted display

Parts with dotted display on the figure are only used for orientation of other parts

# Technical Cover

Page 1 from 2

Material number: 4472.004.077



AP-R 715 /

Pos.	Information	Amendment number
	KUNDE: SCHAEFF	
	IDENT-NR: 5904 661 675	
	QUESTIONNAIRE:	
	PROJEKT-NR.: 48472	
	VEHICLE DATA:	
	RADLADER SKL 824	
	VERTEILER-GETR: 2 AVG 185	
	REIFEN: 18"	
	R.DYN. 0,455 M	
	HYDRO-MOTOR: A6VM 55	
	RIM PITCH CIRCLE DIA 205 MM	
	MAX.SPEED: 36,0 KM/H	
	PRODUCT DESCRIPTION:	
	ACHSANORDNUNG: STARRACHSE HINTEN	
	UEBERSETZUNG GES:I= 17,39	
	PLANETENTRIEB: I= 5,40 P4-151-29	
	KEGELTRIEB: I= 3,22 Z=29/9	
	MOUNTING: SUSPENSION MID POSITION	
	FLANGE DISTANCE: L=1400	
	BRAKE: WITHOUT	
	DIFF.CARRIER:	
	TYP/GROESSE: AE 250KVS	
	SENS OF ROTATION: COUNTER CLOCKWISE	
	RING GEAR: SPIRAL DIRECTION LEFT	
	POSITION OF RING GEAR: LEFT	
	FLANGE CONN: AD=120 * LZ= 8 * D=M10	
	LIMITED-SLIP DIFFERENTIAL	
	TYPE: DZ= 250	
	BEVEL SIDE GEAR SPLINE: N 28X1,25	
	BLOCKAGE EFFECT: 45%	
	DRAWINGS:	
	SCHNITT: 4472 004 033( )	
	EINBAU: 4472 604 060(0)	

# Technical Cover

Page 2 from 2

Material number: 4472.004.077



AP-R 715 /

Pos.	Information	Amendment number
	ZUGKRAFTDIA.:4112 701 775	
	TEST SPECIFICATION: 4472 760 014(0)	
	INSTALLATION INSTRUCTION: 4472 700 020	
	ASSEMBLY INSTRUCTION:	
	HYDROMOTOR-FLANSCHFLAECHE FREI VON FARBE	
	2 AVG 185 I1=2,486/I2=1,218	
	EINBAULAGE: 5 GRAD NACH RECHTS AUF FLANSCH GESEHEN	
	OIL CAPACITY:	
	AXLE: CA. 5,00L	
	PLANETENTRIEB/JE:CA. 0,30L	
	GESAMT: CA. 5,60L	
	OIL FILLING: YES	
	OIL SPECIFICATION: TE ML 05	
	GESAMT-TROCKENMASSE: 180KG	
	FARBE: GRUNDLACK 9005 TIEFSCHWARZ	
	DECKLACK 7024 GRAPHITGRAU	
	MISCELLANEOUS/REMARKS:	
	*	

# Assembly group overview

Page 1 from 1

Material number: 4472.004.077



AP-R 715 /

Picture	Pos.	Material number	Name	Quantity	Amend. no.	Techn. Info.
	120	4112.029.026	2 AVG 185	1		
447210220600	10	4472.102.206	INPUT	1		
448113304700	30	4481.133.047	DIFFERENTIAL	1		
447211708400	70	4472.117.084	AXLE CASING	1		
447212745200	80	4472.127.452	AXLE CASING	1		
447210413400	110	4472.104.134	OUTPUT	1		
447211959800	115	4472.119.598	OUTPUT	2		
447213700300	85	4472.137.003	CLOSING COMPONENTS	1		

# Picture

Page 1 from 1

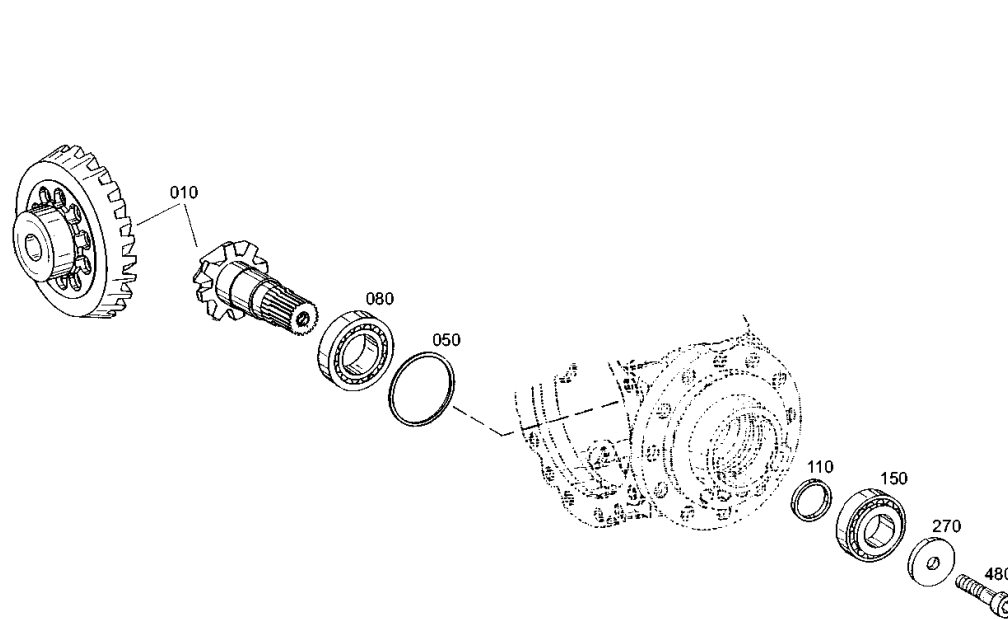
Material number: 4472.004.077

Picture: 447210220600

Material-assembly-group-no: 4472.102.206



AP-R 715 /  
INPUT



# Picture

Page 1 from 1

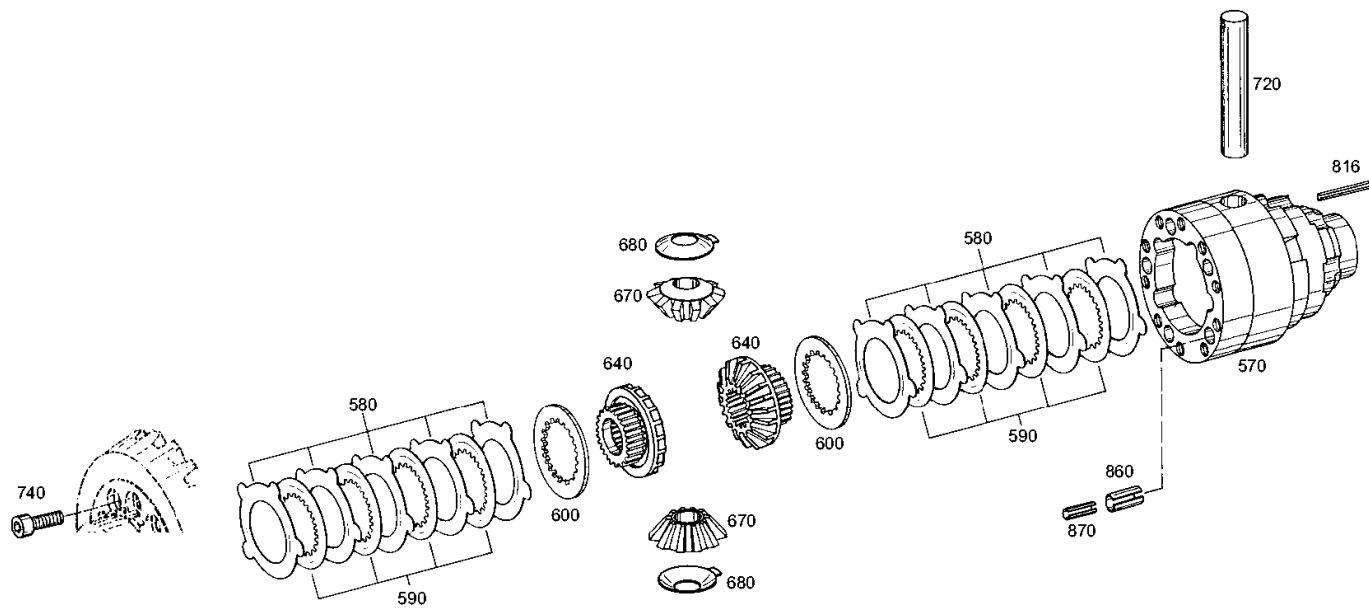
Material number: 4472.004.077

Picture: 448113304700

Material-assembly-group-no: 4481.133.047



AP-R 715 /  
DIFFERENTIAL



# Picture

Page 1 from 1

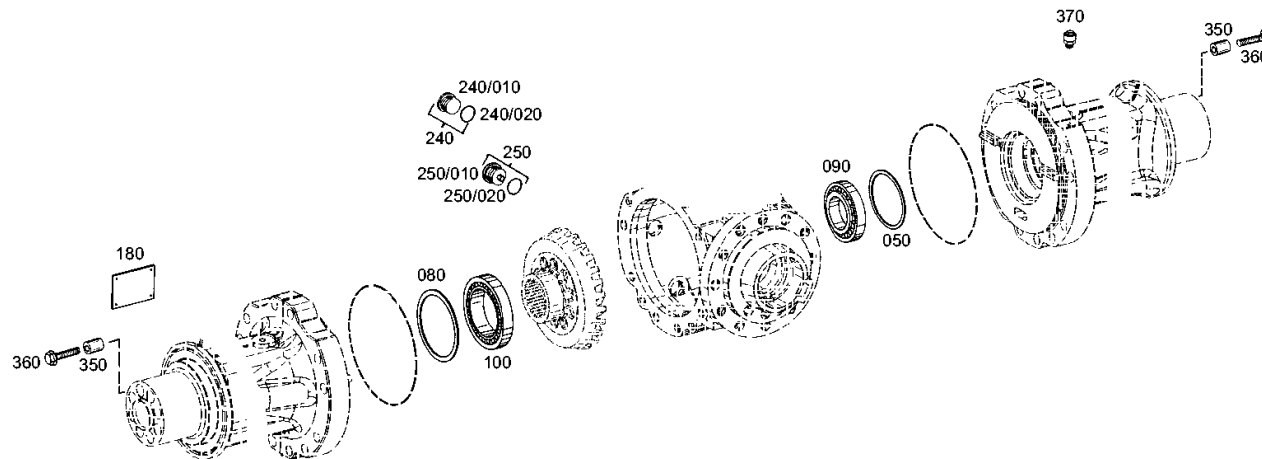
Material number: 4472.004.077

Picture: 447211708400

Material-assembly-group-no: 4472.117.084



AP-R 715 /  
AXLE CASING





# Picture

Page 1 from 1

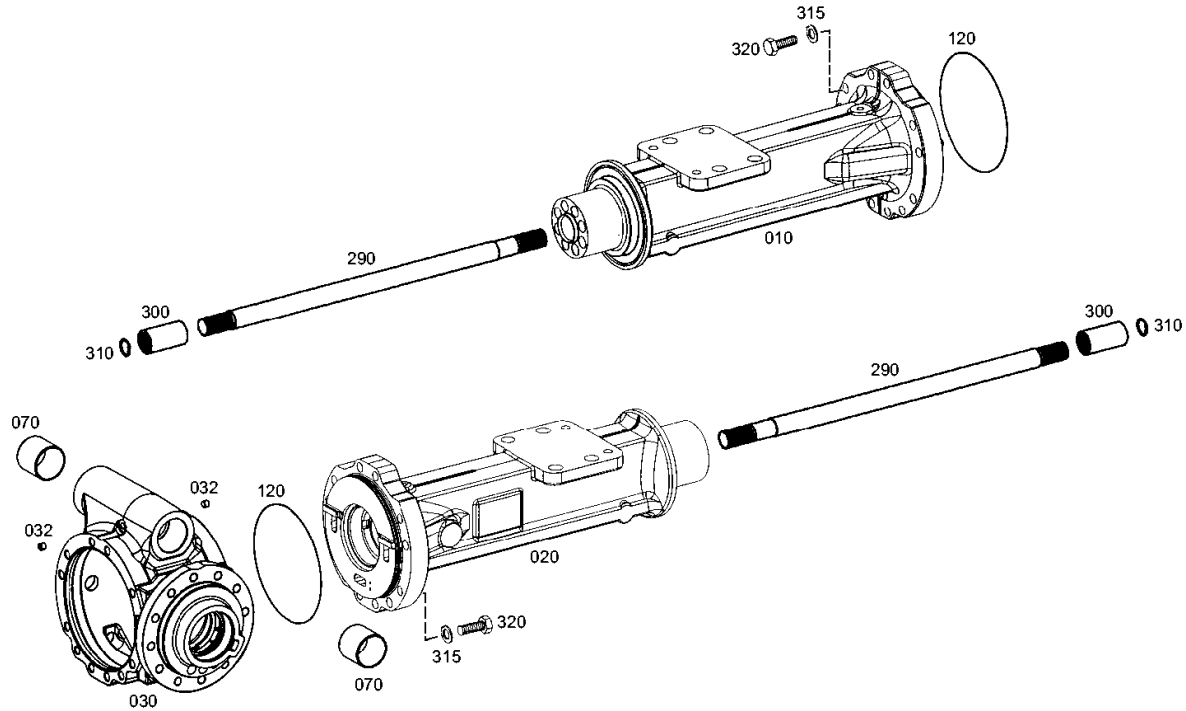
Material number: 4472.004.077

Picture: 447212745200

Material-assembly-group-no: 4472.127.452



AP-R 715 /  
AXLE CASING



# Picture

Page 1 from 1

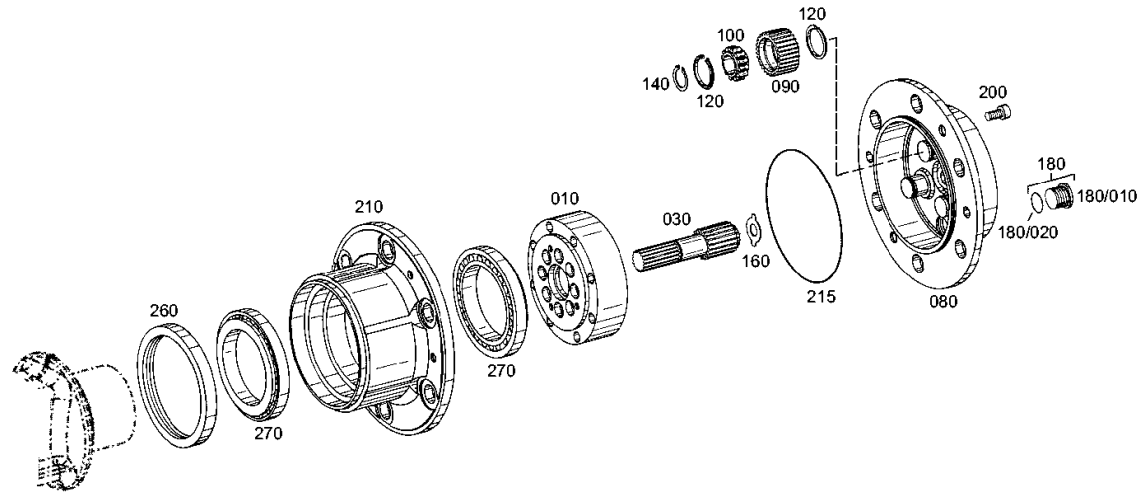
Material number: 4472.004.077

Picture: 447210413400

Material-assembly-group-no: 4472.104.134



AP-R 715 /  
OUTPUT



# Picture

Page 1 from 1

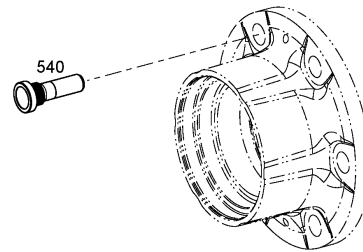
Material number: 4472.004.077

Picture: 447211959800

Material-assembly-group-no: 4472.119.598



AP-R 715 /  
OUTPUT



# Picture

Page 1 from 1

Material number: 4472.004.077

Picture: 447213700300

Material-assembly-group-no: 4472.137.003



AP-R 715 /  
CLOSING COMPONENTS



# Picture

Page 1 from 1

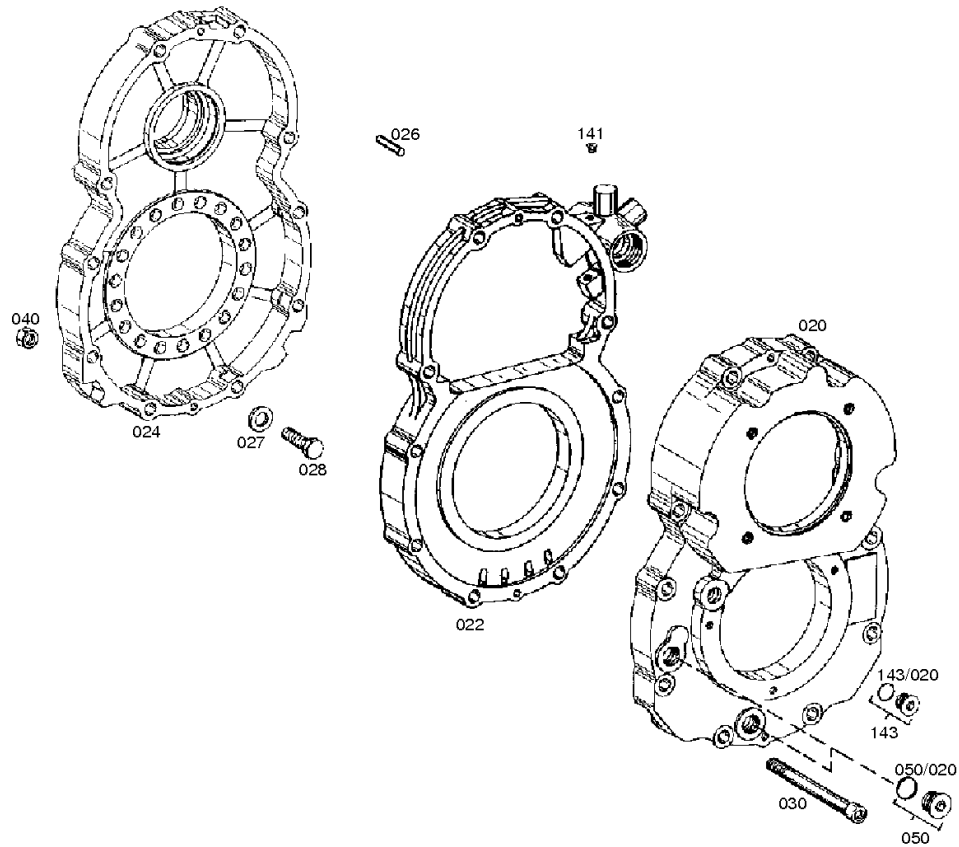
Material number: 4112.029.026

Picture: 411215401600

Material-assembly-group-no: 4112.154.016



AP-R 715 /  
HOUSING



# Picture

Page 1 from 1

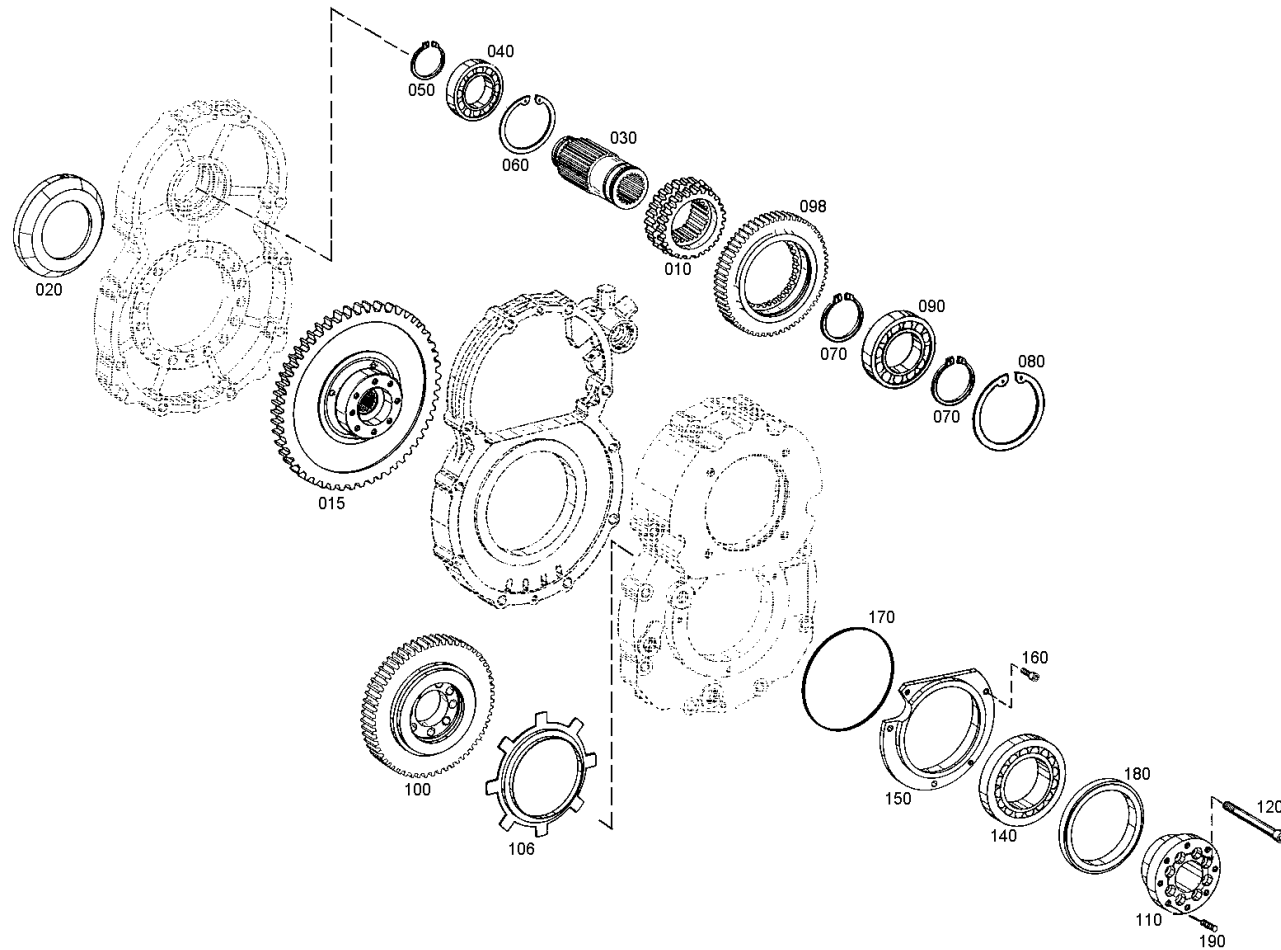
Material number: 4112.029.026

Picture: 411215500800

Material-assembly-group-no: 4112.155.017



AP-R 715 /  
INPUT



# Picture

Page 1 from 1

Material number: 4112.029.026

Picture: 411215600800

Material-assembly-group-no: 4112.156.008



AP-R 715 /  
SHIFT SYSTEM

