



Spare Parts Catalog

MT-L 3025 II

Material number: 4472.025.316

Current date: 04.09.2015

ZF Friedrichshafen AG
Hauptverwaltung
80038 Friedrichshafen
Deutschland

Telefon: +49 7541 77-0

Telefax: +49 7541 77-908000

www.zf.com

zuständiges Werk:
Passau

Notes relating to the spare parts catalog

Setup of the spare parts catalog

- Cover sheet
- Technical Cover (only in SDM print)
- Overview of figures
- Figure
- Associated parts list
- Next figure
- Associated parts list
- ...

Figure and parts list



Overview of figures

Bildtafel Figure	Sachnummer Product number	Benennung (Description)	Technische Info Technical info	Description (Benennung)	Menge Quantity	Einheit Unit
068.08.17	1316.170.001	AUSLEGER	WL	SHIFT TURRET	1	Stk
068.08.06	1316.170.031	DECKEL	WL*H-H *VM	COVER	1	Stk
068.08.14	1316.170.808	DECKEL	WL*AUSL+GEH*H-H*HF160N	COVER	1	Stk
08	1316.170.441	ANSCHLUSSTEILE	WL*NG-VORB*RG-SCHL*168N *BAJONETT	CONNECTING PARTS	1	Stk

The "gap" indicates that there is no separate graphics panel (poster) for this assembly
The parts of this assembly are shown with the same mid-section number on the figure

1 Positions and subpositions

Pos.	Sachnummer Product number	Benennung (Description)	Technische Info Technical info	Description (Benennung)	Menge Quantity	Einheit Unit
0370	1315.201.054	RUECKLAUFBOLZEN	KPL.16S151*SG*L= 79	REV.IDLER SHAFT	1	Stk
/0120	0631.329.293	SPANNSTIFT		SLOT. PIN	1	Stk

Positions marked with "/" are the individual items of a completion
For example: Position 0370 contains a centering pin with the position /0120

2 Combinations with standardized parts

Pos.	Sachnummer Product number	Benennung (Description)	Technische Info Technical info	Description (Benennung)	Menge Quantity	Einheit Unit
0630		VERSCHL.SCHR.		SCREW PLUG	1	Stk
	0636.302.067	VERSCHL.SCHR.		SCREW PLUG	1	Stk
	0634.801.249	DICHTRING	A 26 X 31	SEALING RING	1	Stk

The parts list shows the components included in the combination of standardized parts

3 Depiction of position/item number on the figure and in the parts list

01.620 - on the figure 01 relates to the assembly in which the position is included. Due to program-related reasons, it is shown on the figure.

0620 - in the parts list

Pos.	Sachnummer Product number	Benennung (Description)	Technische Info Technical info	Description (Benennung)	Menge Quantity	Einheit Unit
0620	0732.040.736	DRUCKFEDER		COMPRESSION SPRING	1	Stk

4 *-Positions

Positions marked with an * are optional i.e. inclusion in the parts list is not mandatory.
The following note is shown on the figure

je nach Stücklistenausführung
depending on spec. number
*
suivant la nomenclature
secondo la distinta base

5 Parts, dotted display

Parts with dotted display on the figure are only used for orientation of other parts

Technical Cover

Page 1 from 2

Material number: 4472.025.316



MT-L 3025 II /

Pos.	Information	Amendment number
	CUSTOMER VEHICLE DATA:	
	CUSTOMER: WEIDEMANN	
	CUSTOMER ID.-NO.: 1000267875	
	VEHICLE: 4270CX	
	TIRE SIZE STD. 12.5/20 / MAX. 405R20 AS	
	DYN. TIRE RADIUS: STD. 0,503 M / MAX. 0,510 M	
	MAX. VEHICLE SPEED: 33 KM/H	
	PRODUCT DESCRIPTION: ZF-COMPTRAK AXLE	
	VEHICLE TYPE: COMPACT LOADER	
	AXLE TYPE: MT-L3025 II	
	AXLE VERSION: RIGID AXLE	
	AXLE ARRANGEMENT: REAR AXLE	
	INPUT ROTAT. DIRECTION: EDUL (CCLW)	
	CROWN WHEEL POSITON: RECHTS (RH)	
	BEVEL SPIRAL DIRECTION: RECHTS (RH)	
	FLANGE TO FLANGE DIM.: 1422	
	MOUNTING: MOUNTING PADS	
	FRAME HOLE DISTANCE: 770/900/1030/1160	
	MAIN DIFFERENTIAL: DOG CLUTCH	
	ACTUATING FLUID: TE ML 05	
	LOCKING RATIO: 100 %	
	AXLE RATIO: 17,221	
	BEVEL GEAR RATIO: 2,417	
	PLANETARY DRIVE: P3 / I=7,125	
	AXLE INPUT MOUNTING: DROP BOX 1AVG-185	
	RATIO 1.GEAR: 1,568 (TOTAL: 27,003)	
	HYDROMOTOR / SPLINE: A6VM150/160 / N45X2	
	DROP BOX ANGLE: 5° MUL (CLW)	
	INPUT FLANGE: D120 - 8 X M10 X 20	
	RIM PITCH CIRCLE DIAM.: 205 MM	
	WHEEL CONNECTION: WHEEL STUDS 8 X M22 X 1,5 / L=47	
	WHEEL NUTS: MIT (WITH)	
	OIL FILLING: MIT (WITH)	

Technical Cover

Page 2 from 2

Material number: 4472.025.316



MT-L 3025 II /

Pos.	Information	Amendment number
	OIL GRADE FILLED: TE ML 05	
	OIL GRADE PERMITTED: TE ML 05	
	COLOUR PRIMER COAT: BLACK	
	FINISH PAINT: GREY RAL 7043	
	PAINT-FREE AREA: STANDARD COMPTRAK	
	TYPE PLATE: STANDARD STN	
	PLANET.DRIVE OIL CAP.: 0,70 L	
	AXLE HOUSING OIL CAP.: 4,50 L	
	TOTAL OIL FILL CAPAC.: 5,90 L	
	DOCUMENTATION:	
	SECTION DRAWING: 4472.004.300	
	SECTION DRAWING: 4112.030.103	
	INSTALLATION DRAWING: 4472.625.316	
	INSTALLATION INSTRUCT.: 4472.700.077	
	TESTING INSTRUCTION: 4475.760.028	
	DRIVING PERFORM. CALC.: 4112.711.819/820/821/822	

Assembly group overview

Page 1 from 1



MT-L 3025 II /

Material number: 4472.025.316

Picture	Pos.	Material number	Name	Quantity	Amend. no.	Techn. Info.
	120	4112.030.105	1 AVG 185	1		
447210222100	10	4472.102.221	INPUT	1		
447210252650	20	4472.102.526	INPUT	1		
448202300150	30	4482.023.001	DIFFERENTIAL 250	1		
447211722200	70	4472.117.222	AXLE CASING	1		
447212750050	80	4472.127.500	AXLE CASING	1		
447212751100	82	4472.127.511	AXLE CASING	1		
447212751300	84	4472.127.513	AXLE CASING	1		
447211919300	110	4472.119.193	OUTPUT	1		
447211962700	115	4472.119.627	OUTPUT	1		
414313900700	900	4143.139.007	TYPE PLATE	1		

Picture

Page 1 from 1

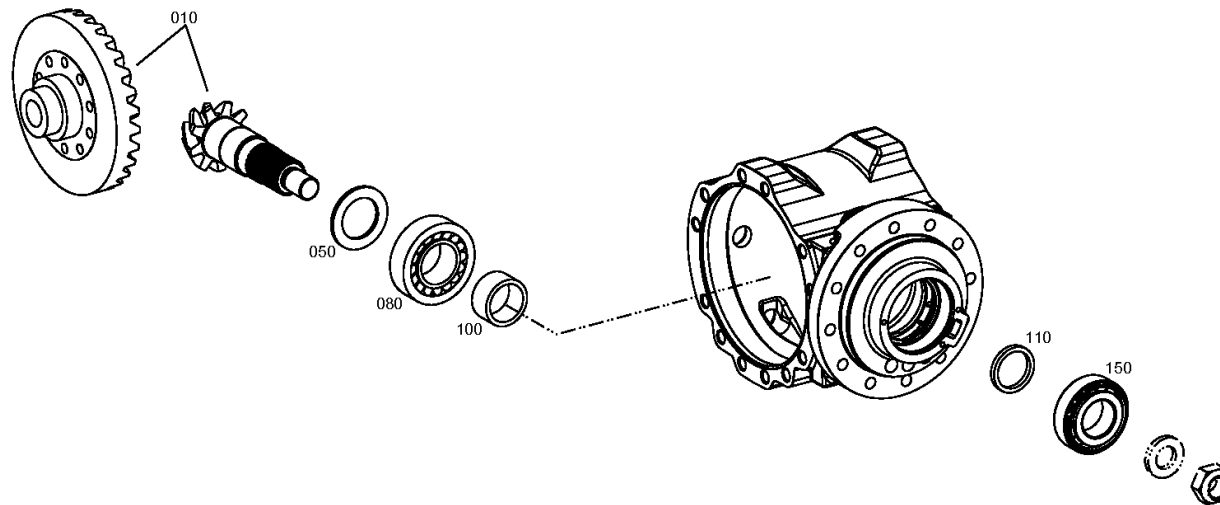
Material number: 4472.025.316

Picture: 447210222100

Material-assembly-group-no: 4472.102.221



MT-L 3025 II /
INPUT



Picture

Page 1 from 1

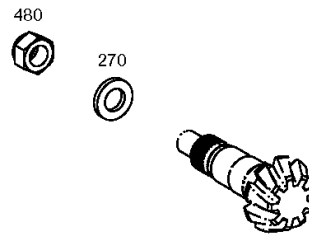
Material number: 4472.025.316

Picture: 447210252650

Material-assembly-group-no: 4472.102.526



MT-L 3025 II /
INPUT



Picture

Page 1 from 1

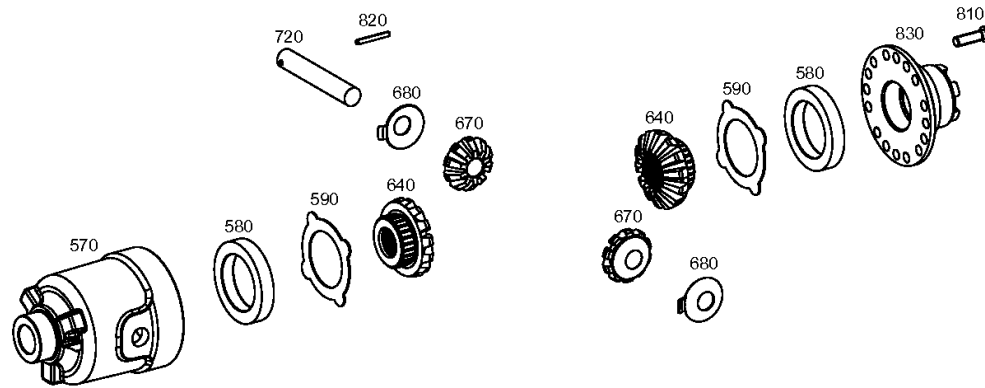
Material number: 4472.025.316

Picture: 448202300150

Material-assembly-group-no: 4482.023.001



MT-L 3025 II /
DIFFERENTIAL 250



Picture

Page 1 from 2

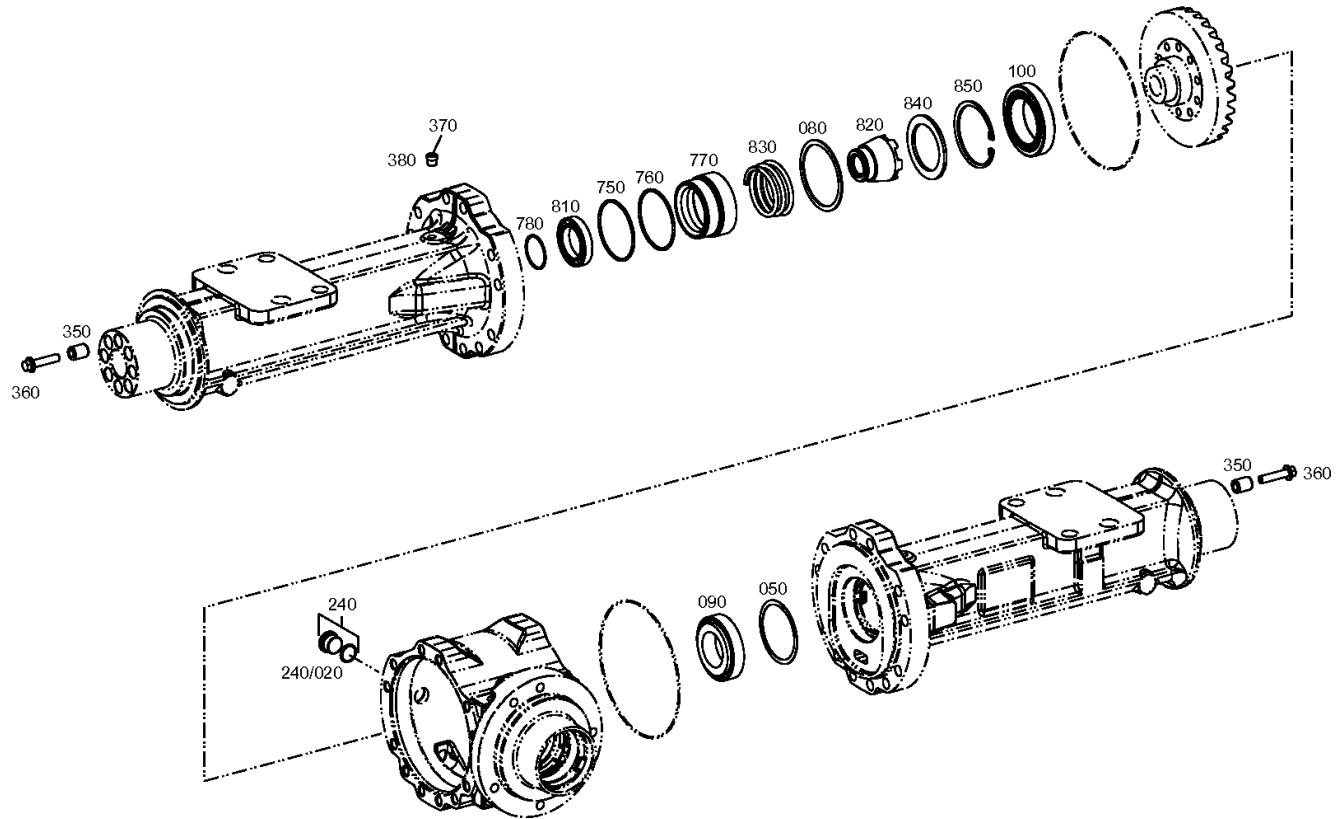
Material number: 4472.025.316

Picture: 447211722200

Material-assembly-group-no: 4472.117.222



MT-L 3025 II /
AXLE CASING



Picture

Page 2 from 2

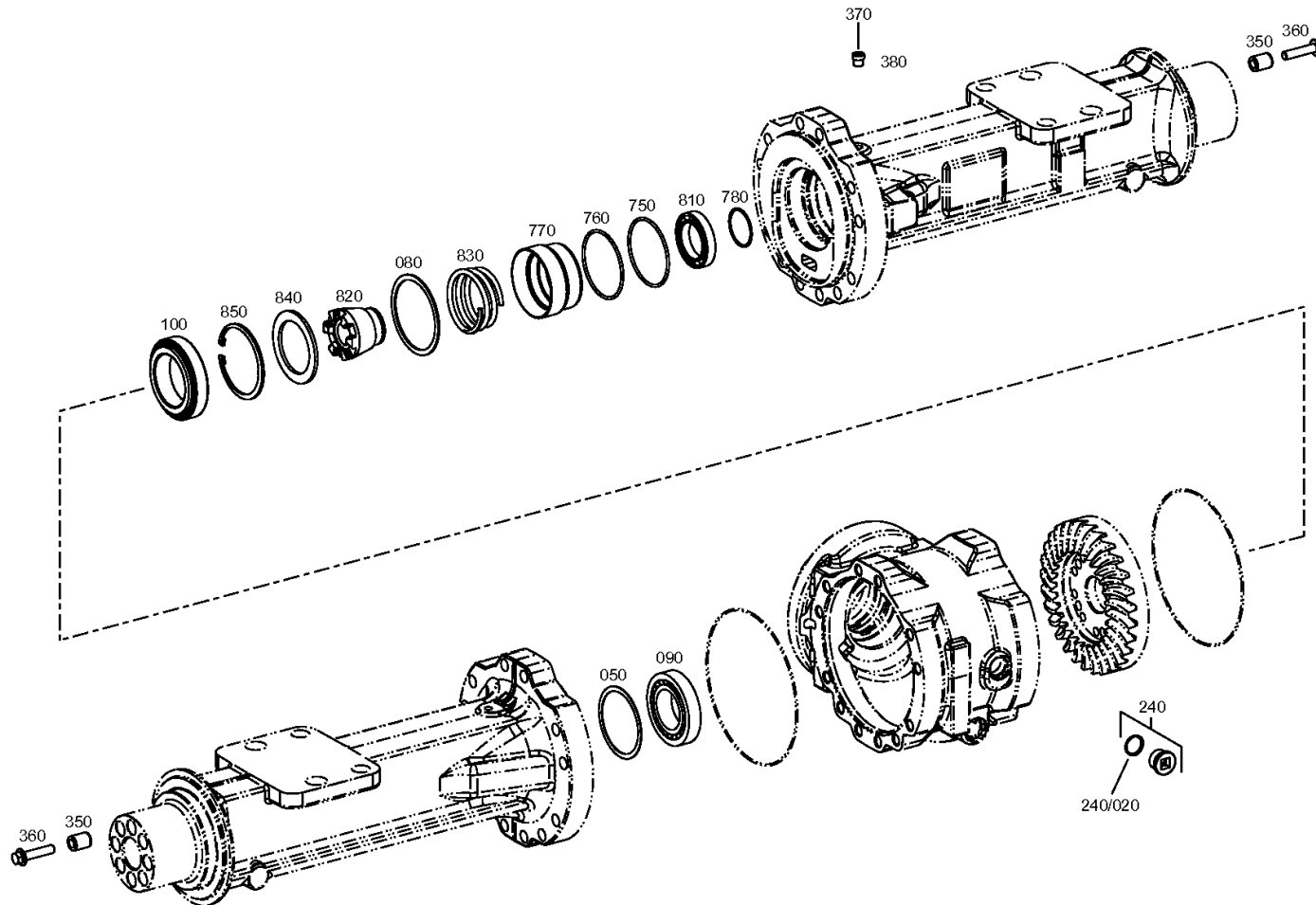
Material number: 4472.025.316

Picture: 447211722250

Material-assembly-group-no: 4472.117.222



MT-L 3025 II /
AXLE CASING



Picture

Page 1 from 1

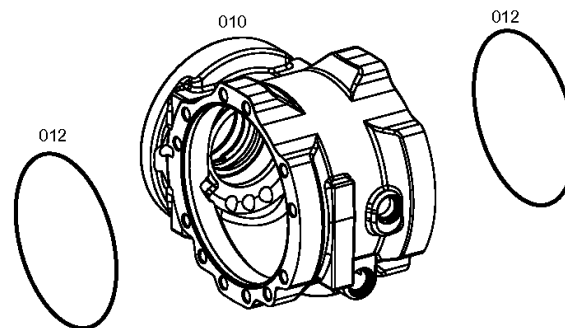
Material number: 4472.025.316

Picture: 447212750050

Material-assembly-group-no: 4472.127.500



MT-L 3025 II /
AXLE CASING



Picture

Page 1 from 1

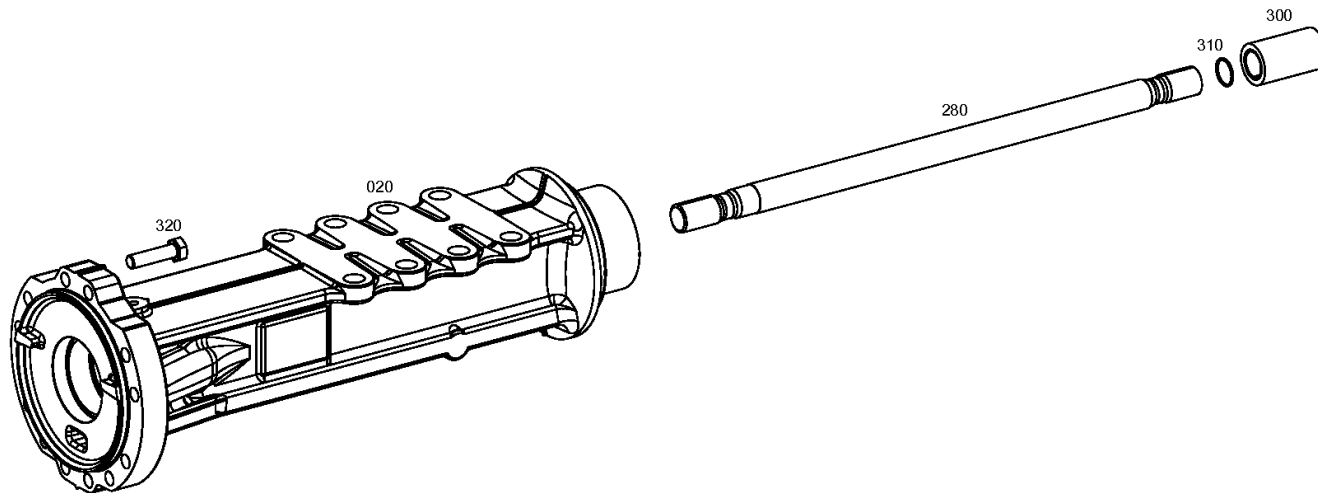
Material number: 4472.025.316

Picture: 447212751100

Material-assembly-group-no: 4472.127.511



MT-L 3025 II /
AXLE CASING



Picture

Page 1 from 1

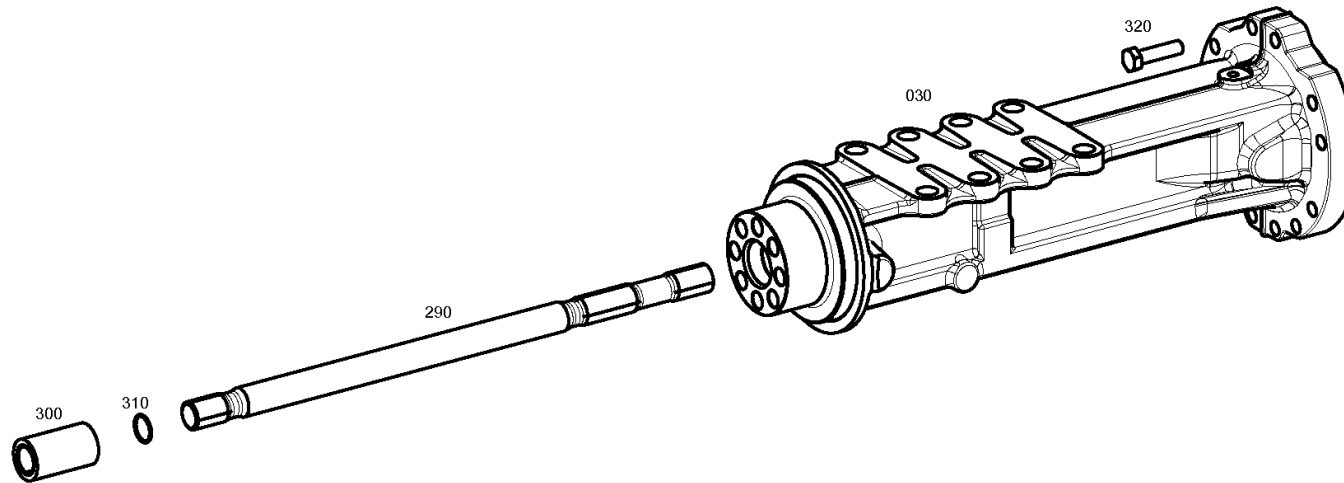
Material number: 4472.025.316

Picture: 447212751300

Material-assembly-group-no: 4472.127.513



MT-L 3025 II /
AXLE CASING



Picture

Page 1 from 1

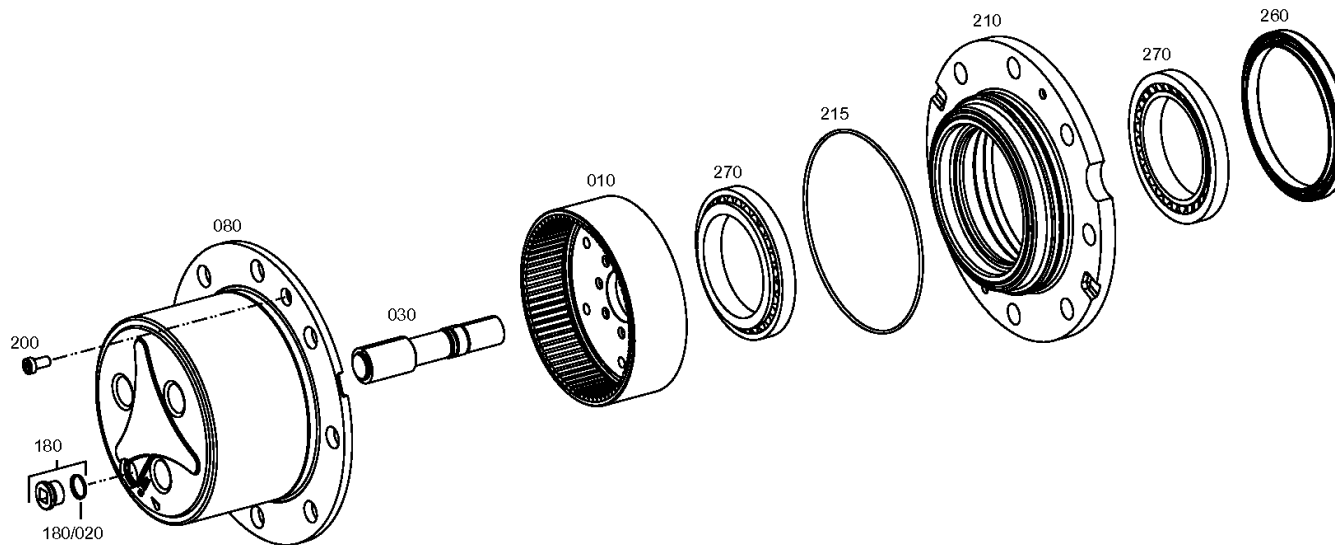
Material number: 4472.025.316

Picture: 447211919300

Material-assembly-group-no: 4472.119.193



MT-L 3025 II /
OUTPUT



Picture

Page 1 from 1

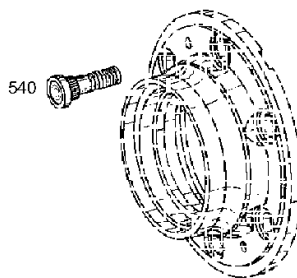
Material number: 4472.025.316

Picture: 447211962700

Material-assembly-group-no: 4472.119.627



MT-L 3025 II /
OUTPUT



Picture

Page 1 from 1

Material number: 4472.025.316


Picture: 414313900700

Material-assembly-group-no: 4143.139.007



MT-L 3025 II /
TYPE PLATE

010

	
Registered ZF, Pilsen 6021, Germany Manufactured ZF, Stoubov 620, Czech Republic	
Type	
Parts List No.	Customer's Part No.
Serial No.	List of Lubrication
Characteristic	TE-M

Picture

Page 1 from 1

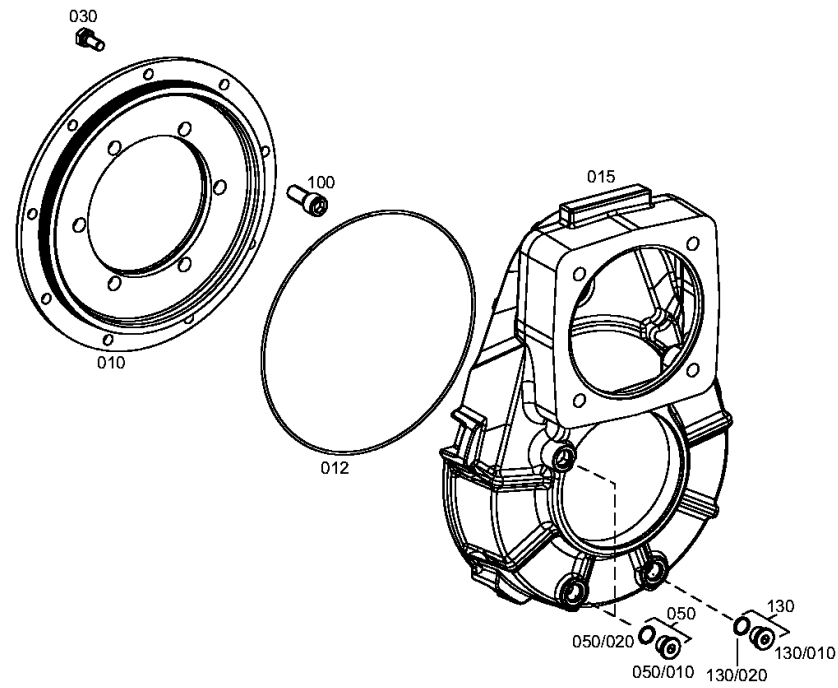
Material number: 4112.030.105

Picture: 411213410200

Material-assembly-group-no: 4112.134.102



MT-L 3025 II /
HOUSING



Picture

Page 1 from 1

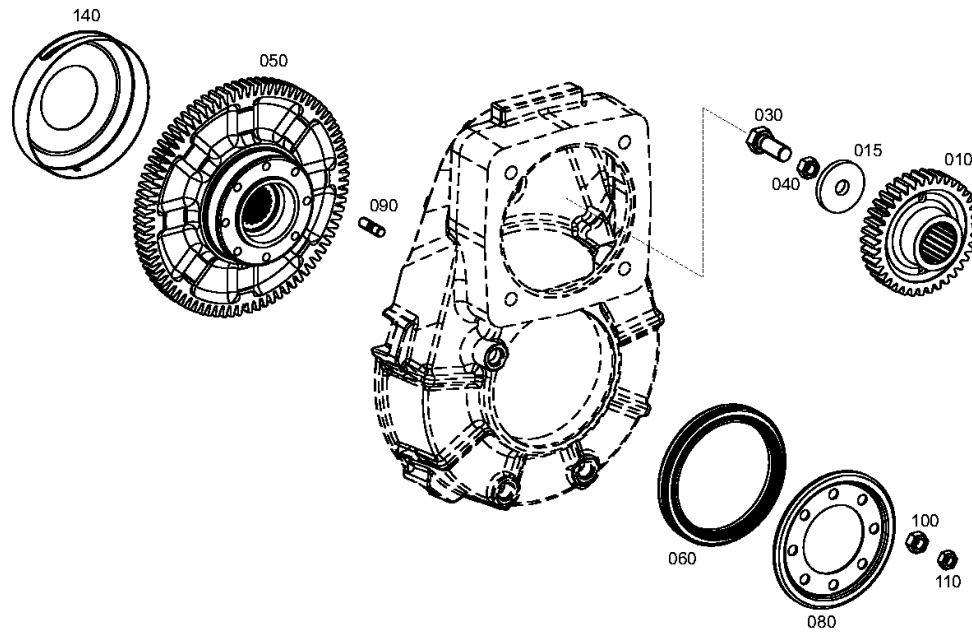
Material number: 4112.030.105

Picture: 411213510300

Material-assembly-group-no: 4112.135.103



MT-L 3025 II /
INPUT



Picture

Page 1 from 1

Material number: 4112.030.105

Picture: 411213801800

Material-assembly-group-no: 4112.138.018



MT-L 3025 II /
COVER

