



Spare Parts Catalog

APL-B 755

Material number: 4472.077.052

Current date: 19.02.2019

ZF Friedrichshafen AG
Hauptverwaltung
80038 Friedrichshafen
Deutschland

Telefon: +49 7541 77-0

Telefax: +49 7541 77-908000

www.zf.com

zuständiges Werk:
Passau

Notes relating to the spare parts catalog

Setup of the spare parts catalog

- Cover sheet
- Technical Cover (only in SDM print)
- Overview of figures
- Figure
- Associated parts list
- Next figure
- Associated parts list
- ...

Figure and parts list



Overview of figures

Bildtafel Figure	Sachnummer Product number	Benennung (Description)	Technische Info Technical info	Description (Benennung)	Menge Quantity	Einheit Unit
068.08.17	1316.170.001	AUSLEGER	WL	SHIFT TURRET	1	Stk
068.08.06	1316.170.031	DECKEL	WL*H-H *VM	COVER	1	Stk
068.08.14	1316.170.808	DECKEL	WL*AUSL+GEH*H-H*HF160N	COVER	1	Stk
08	1316.170.441	ANSCHLUSSTEILE	WL*NG-VORB*RG-SCHL*168N *BAJONETT	CONNECTING PARTS	1	Stk

The "gap" indicates that there is no separate graphics panel (poster) for this assembly
The parts of this assembly are shown with the same mid-section number on the figure

1 Positions and subpositions

Pos.	Sachnummer Product number	Benennung (Description)	Technische Info Technical info	Description (Benennung)	Menge Quantity	Einheit Unit
0370	1315.201.054	RUECKLAUFBOLZEN	KPL.16S151*SG*L= 79	REV.IDLER SHAFT	1	Stk
/0120	0631.329.293	SPANNSTIFT		SLOT. PIN	1	Stk

Positions marked with "/" are the individual items of a completion
For example: Position 0370 contains a centering pin with the position /0120

2 Combinations with standardized parts

Pos.	Sachnummer Product number	Benennung (Description)	Technische Info Technical info	Description (Benennung)	Menge Quantity	Einheit Unit
0630		VERSCHL.SCHR.		SCREW PLUG	1	Stk
	0636.302.067	VERSCHL.SCHR.		SCREW PLUG	1	Stk
	0634.801.249	DICHTRING	A 26 X 31	SEALING RING	1	Stk

The parts list shows the components included in the combination of standardized parts

3 Depiction of position/item number on the figure and in the parts list

01.620 - on the figure 01 relates to the assembly in which the position is included. Due to program-related reasons, it is shown on the figure.

0620 - in the parts list

Pos.	Sachnummer Product number	Benennung (Description)	Technische Info Technical info	Description (Benennung)	Menge Quantity	Einheit Unit
0620	0732.040.736	DRUCKFEDER		COMPRESSION SPRING	1	Stk

4 *-Positions

Positions marked with an * are optional i.e. inclusion in the parts list is not mandatory.
The following note is shown on the figure

je nach Stücklistenausführung
depending on spec. number
*
suivant la nomenclature
secondo la distinta base

5 Parts, dotted display

Parts with dotted display on the figure are only used for orientation of other parts

Technical Cover

Page 1 from 2

Material number: 4472.077.052



APL-B 755 /

Pos.	Information	Amendment number
	KUNDE:LIEBHERR-KIRCHDORF	
	IDENT-NR:5007.813	
	APPROVAL:	
	QUESTIONNAIRE:	
	WITHOUT	
	PROJEKT-NR.:22562	
	VEHICLE DATA:	
	MOBILBAGGER A 900 LI./A 90	
	MOTOR: HYDROMOTOR LMV 100	
	TRANSMISSION: 2 HL 100	
	DUAL TIRES: DOUBLE	
	TIRES: 10.00-20	
	R.DYN. 0,507 M	
	RIM PITCH CIRCLE DIA: 335 MM	
	MAX.SPEED: 30,0 KM/H	
	QUANTITY AXLE/ 1XSTEERING AXLE APL-B755	
	QUANTITY AXLE/ 1XRIGID AXLE AP-B755	
	PRODUCT DESCRIPTION:	
	MOUNTING POSITION:FRONT AXLE	
	RATIO TOTAL: I=17,52	
	PLANETARY DRIVE:I=6,00 P4-190-40	
	BEVELGEAR SET: I= 2,92 T=35/12	
	MOUNTING: L=1035	
	FLANGE DISTANCE: L=1890	
	BRAKE:	
	MULTIPLE-DISC BRAKE: HYDR. 130X180	
	LINING DISC: 5	
	WORKING CYLINDER: INTEGRATED	
	DIFF.CARRIER:	
	TYPE: AE 500 K	
	SENS OF ROTATION:CLOCKWISE	
	RING GEAR: SPIRAL DIRECTION LEFT	
	POSITION OF RING GEAR: LEFT	

Technical Cover

Page 2 from 2

Material number: 4472.077.052



APL-B 755 /

Pos.	Information	Amendment number
	FLANGE CONN: AD=120 *LZ=8 * D=10,1	
	DIFFERENTIAL:	
	TYPE: D=500	
	BEVEL SIDE GEAR SPLINE: N 35X1,25	
	DRAWINGS:	
	SECT.DRAWING: 4472 077 037(0)	
	EINBAU: 4472 677 018()	
	ZUGKRAFTDIA.:4143 701 145/146 (3)	
	TEST SPECIFICATION: 4472 760 013()	
	ASSEMBLY INSTRUCTION:	
	STEERING ANGLE: 31 DEGREE	
	LIEBHERR-NR. 5007 813IN TYPENSCH.EINSCHL.	
	PISTON STROKE 3,1 - 3,5 MM	
	AUXILIARY UNIT	
	OIL CAPACITY:	
	AXLE: (APPRXY) CA. 8,50L	
	PLANETENTRIEB/JE:CA. 2,10L	
	TOTAL: CA. 12,70L	
	OIL FILLING: YES	
	OIL GRADE:SPECIFICATION TE ML 05 / AXLE	
	BRAKE CONTROL: ATF-OIL/MOTOROIL 10 W	
	WEIGHT: 510KG	
	FARBE: VERKEHRSGRAU RAL 7043	
	ENDLACKIERT	
	MISCELLANEOUS/REMARKS:	
	SWINGING AXLE SUSPENSION	
	QUANTITY OF LINED DISCS IN TYPE PLATE PUNCH MARK	
	RATIO PLANETARY IN NAME PLATE	

Assembly group overview

Page 1 from 1

Material number: 4472.077.052



APL-B 755 /

Graphics	Pos.	Material number	Name	Quantity	Amend. no.	Techn. Info.
447211609900	10	4472.116.099	INPUT	1		
447211640200	20	4472.116.402	INPUT	1		
446117300200	30	4461.173.048	DIFFERENTIAL	1		
447211715801	70	4472.117.708	AXLE CASING	1		
447211755800	80	4472.117.558	AXLE CASING	1		
447211807300	90	4472.118.073	JOINT HOUSING	1		
447211840700	100	4472.118.407	JOINT HOUSING	1		
447211911800	130	4472.119.118	OUTPUT	1		
447211960600	140	4472.119.606	OUTPUT	1		
447212002900	150	4472.120.029	STEERING	1		

Plant

Page 1 from 1

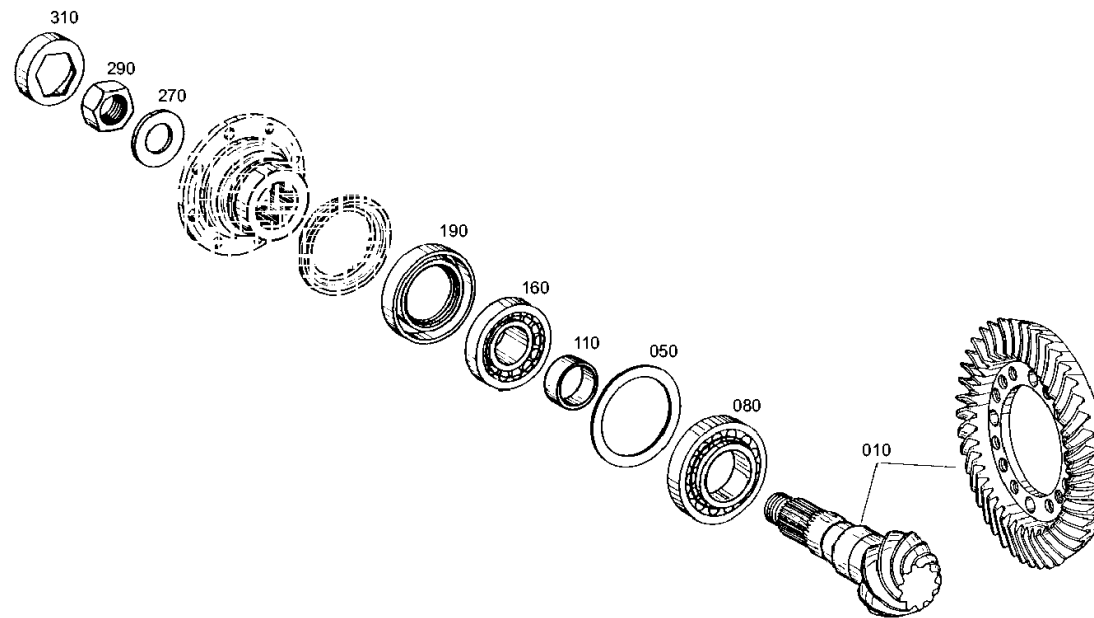
Material number: 4472.077.052

Plant: 447211609900

Material-assembly-group-no: 4472.116.099



APL-B 755 /
INPUT



Plant

Page 1 from 1

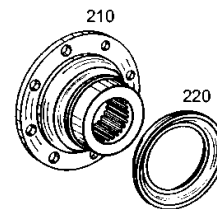
Material number: 4472.077.052

Plant: 447211640200

Material-assembly-group-no: 4472.116.402



APL-B 755 /
INPUT



Plant

Page 1 from 1

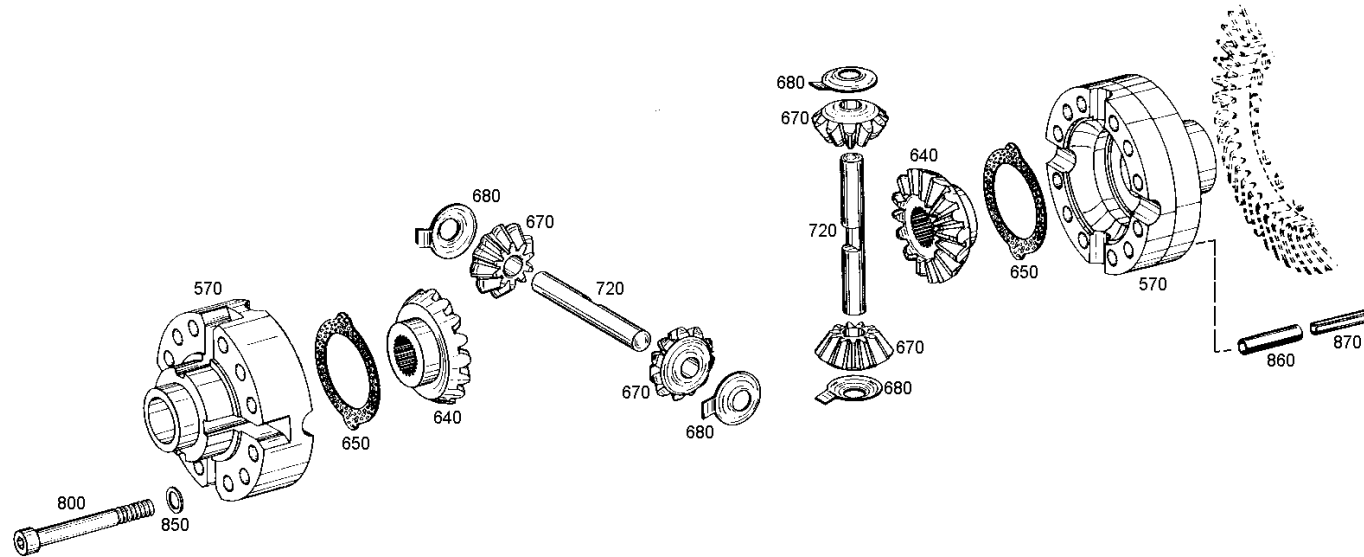
Material number: 4472.077.052

Plant: 446117300200

Material-assembly-group-no: 4461.173.048



APL-B 755 /
DIFFERENTIAL



Plant

Page 1 from 1

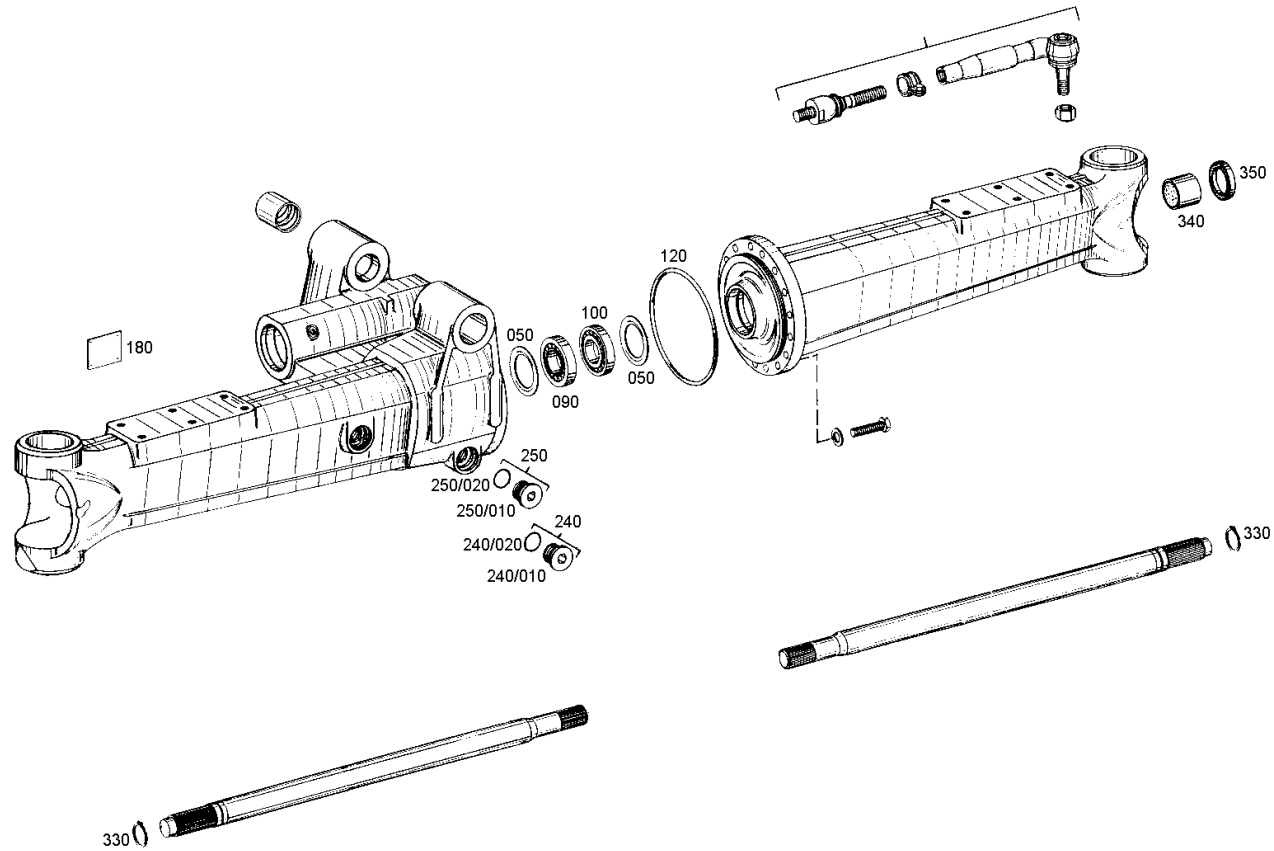
Material number: 4472.077.052

Plant: 447211715801

Material-assembly-group-no: 4472.117.708



APL-B 755 /
AXLE CASING



Plant

Page 1 from 1

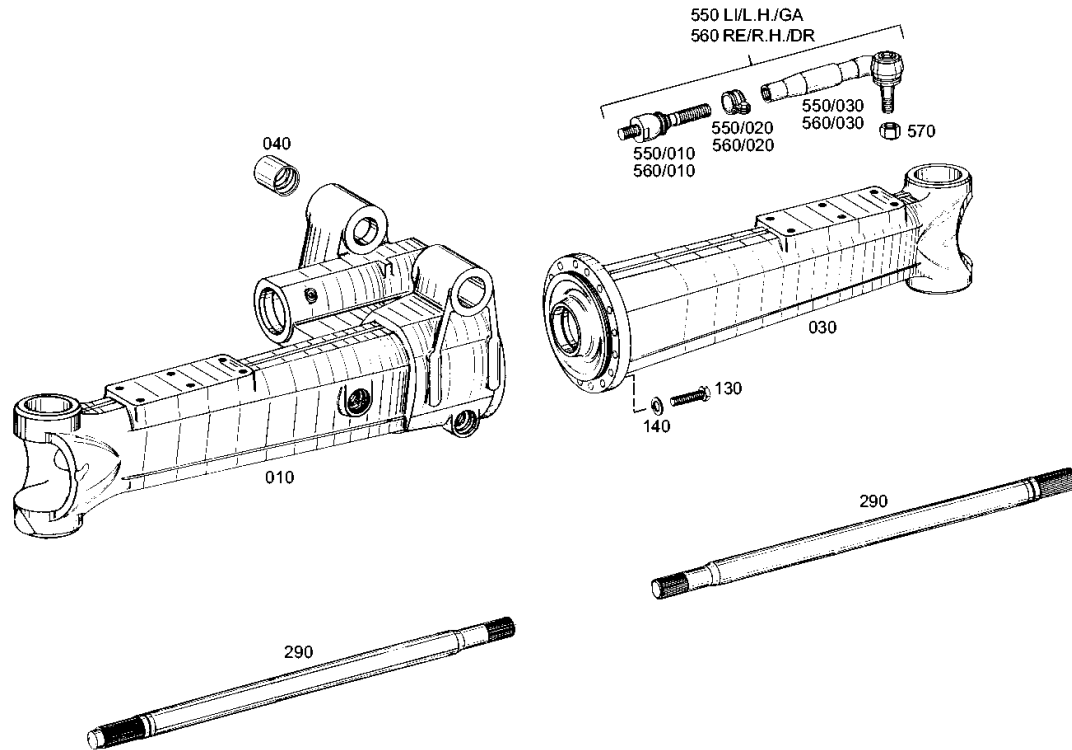
Material number: 4472.077.052

Plant: 447211755800

Material-assembly-group-no: 4472.117.558



APL-B 755 /
AXLE CASING



Plant

Page 1 from 1

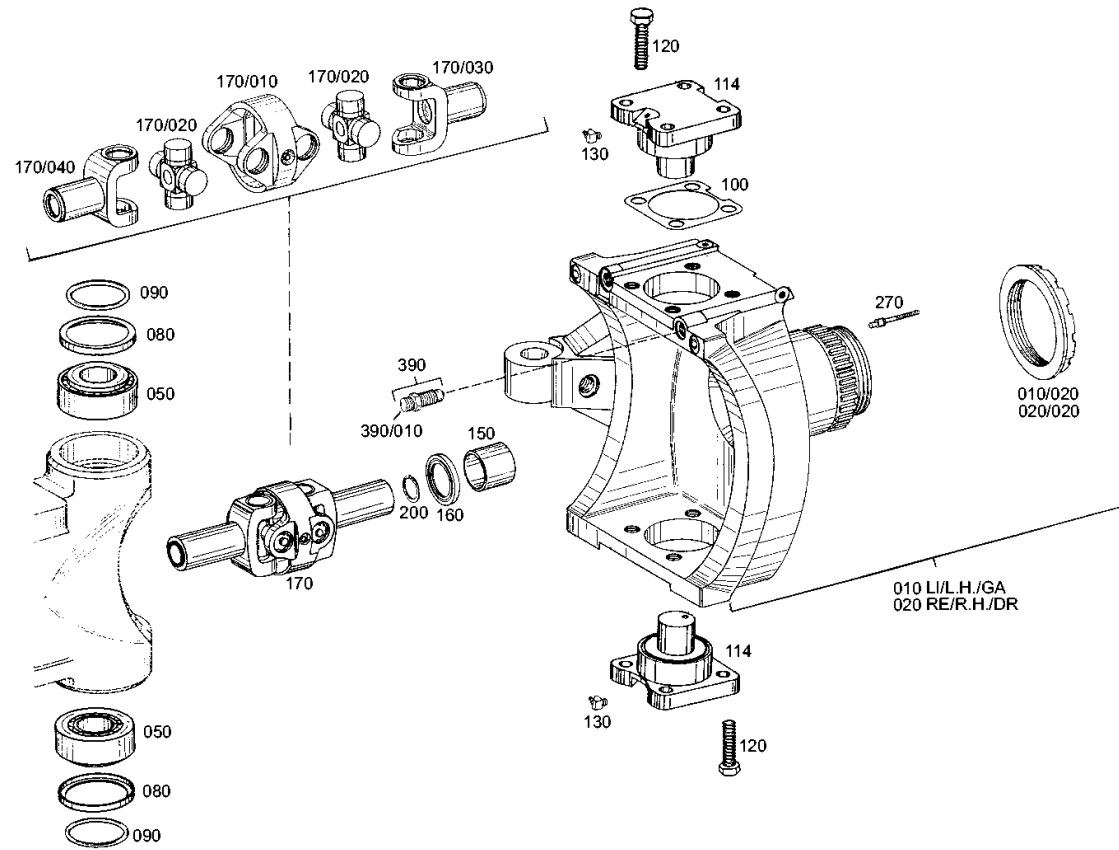
Material number: 4472.077.052

Plant: 447211807300

Material-assembly-group-no: 4472.118.073



APL-B 755 /
JOINT HOUSING



Plant

Page 1 from 1

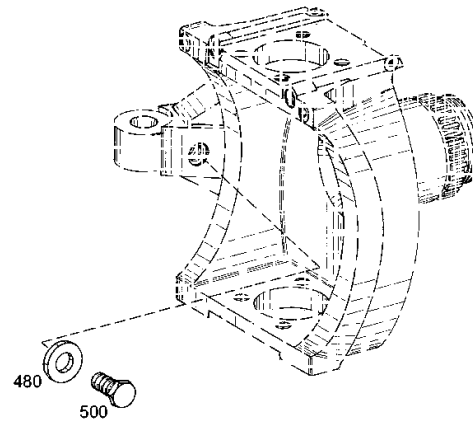
Material number: 4472.077.052

Plant: 447211840700

Material-assembly-group-no: 4472.118.407



APL-B 755 /
JOINT HOUSING



Plant

Page 1 from 1

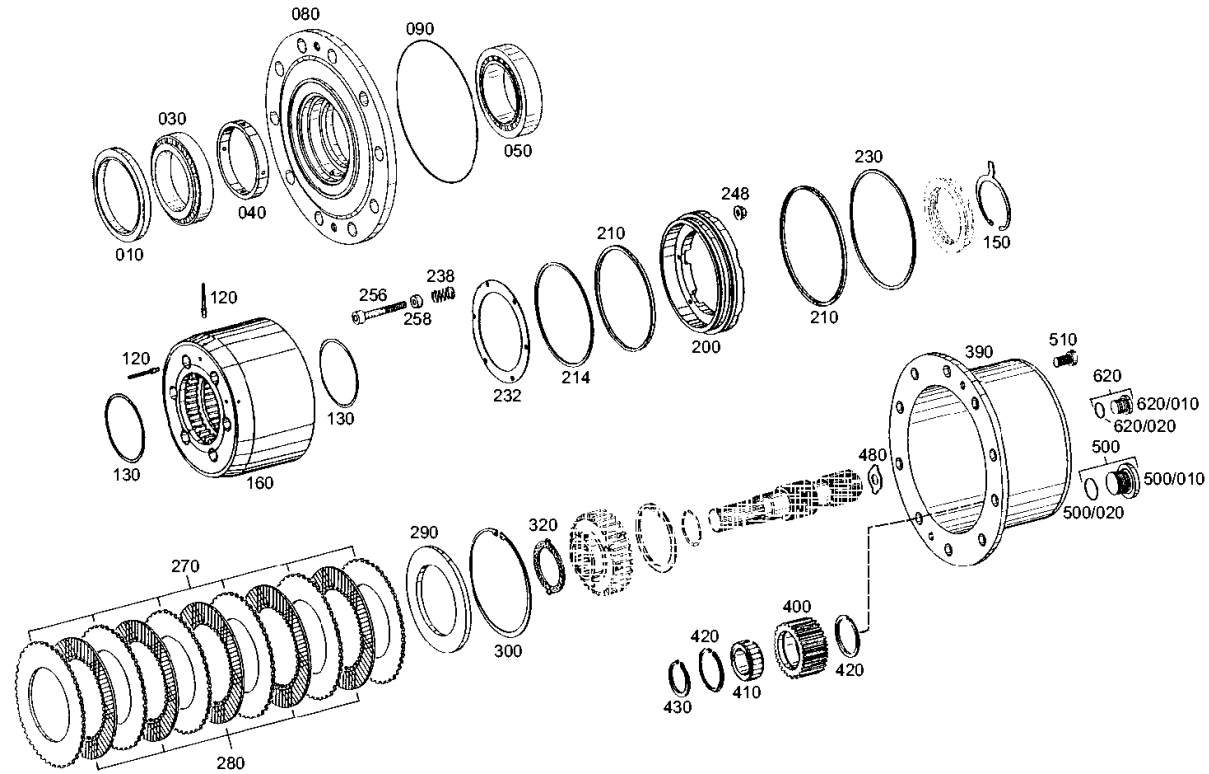
Material number: 4472.077.052

Plant: 447211911800

Material-assembly-group-no: 4472.119.118



APL-B 755 /
OUTPUT



Plant

Page 1 from 1

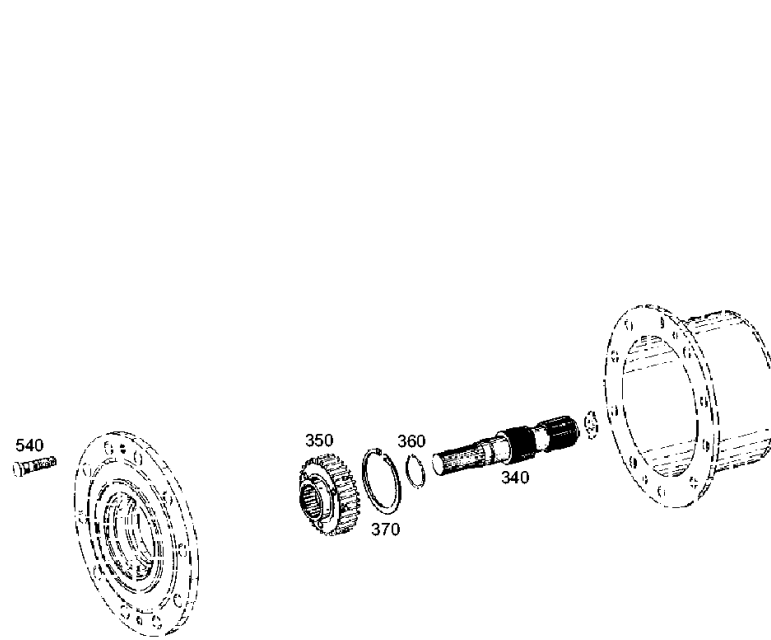
Material number: 4472.077.052

Plant: 447211960600

Material-assembly-group-no: 4472.119.606



APL-B 755 /
OUTPUT



Plant

Page 1 from 1

Material number: 4472.077.052

Plant: 447212002900

Material-assembly-group-no: 4472.120.029



APL-B 755 /
STEERING

