



Spare Parts Catalog

AP 412

Material number: 4474.006.127

Current date: 24.03.2022

ZF Friedrichshafen AG
Hauptverwaltung
80038 Friedrichshafen
Deutschland

Telefon: +49 7541 77-0

Telefax: +49 7541 77-908000

www.zf.com

zuständiges Werk:
Passau

Notes relating to the spare parts catalog

Setup of the spare parts catalog

- Cover sheet
- Technical Cover (only in SDM print)
- Overview of figures
- Figure
- Associated parts list
- Next figure
- Associated parts list
- ...

Figure and parts list



Overview of figures

Bildtafel Figure	Sachnummer Product number	Benennung (Description)	Technische Info Technical info	Description (Benennung)	Menge Quantity	Einheit Unit
068.08.17	1316.170.001	AUSLEGER	WL	SHIFT TURRET	1	Stk
068.08.06	1316.170.031	DECKEL	WL*H-H *VM	COVER	1	Stk
068.08.14	1316.170.808	DECKEL	WL*AUSL+GEH*H-H*HF160N	COVER	1	Stk
08	1316.170.441	ANSCHLUSSTEILE	WL*NG-VORB*RG-SCHL*168N *BAJONETT	CONNECTING PARTS	1	Stk

The "gap" indicates that there is no separate graphics panel (poster) for this assembly
The parts of this assembly are shown with the same mid-section number on the figure

1 Positions and subpositions

Pos.	Sachnummer Product number	Benennung (Description)	Technische Info Technical info	Description (Benennung)	Menge Quantity	Einheit Unit
0370	1315.201.054	RUECKLAUFBOLZEN	KPL.16S151*SG*L= 79	REV.IDLER SHAFT	1	Stk
/0120	0631.329.293	SPANNSTIFT		SLOT. PIN	1	Stk

Positions marked with "/" are the individual items of a completion
For example: Position 0370 contains a centering pin with the position /0120

2 Combinations with standardized parts

Pos.	Sachnummer Product number	Benennung (Description)	Technische Info Technical info	Description (Benennung)	Menge Quantity	Einheit Unit
0630		VERSCHL.SCHR.		SCREW PLUG	1	Stk
	0636.302.067	VERSCHL.SCHR.		SCREW PLUG	1	Stk
	0634.801.249	DICHTRING	A 26 X 31	SEALING RING	1	Stk

The parts list shows the components included in the combination of standardized parts

3 Depiction of position/item number on the figure and in the parts list

01.620 - on the figure 01 relates to the assembly in which the position is included. Due to program-related reasons, it is shown on the figure.

0620 - in the parts list

Pos.	Sachnummer Product number	Benennung (Description)	Technische Info Technical info	Description (Benennung)	Menge Quantity	Einheit Unit
0620	0732.040.736	DRUCKFEDER		COMPRESSION SPRING	1	Stk

4 *-Positions

Positions marked with an * are optional i.e. inclusion in the parts list is not mandatory.
The following note is shown on the figure

je nach Stücklistenausführung
depending on spec. number
*
suivant la nomenclature
secondo la distinta base

5 Parts, dotted display

Parts with dotted display on the figure are only used for orientation of other parts

Technical Cover

Page 1 from 2

Material number: 4474.006.127



AP 412 /

Pos.	Information	Amendment number
	CUSTOMER: LZZF	
	IDENT-NO.: WITHOUT	
	QUESTIONNAIRE:	
	WITHOUT	
	PROJEKT-NR.:35212	
	VEHICLE DATA:	
	VEHICLE TYPE: WHEEL LOADER ZL50	
	ENGINE/MAKE/TYPER:.....	
	ENGINE POWER: P=... KW IN N=.... UPM	
	INPUT TORQUE: T= ... NM IN N=.... RPM	
	4WG-200	
	TYRES: SINGLE	
	DUAL TIRES: DOUBLE	
	TIRES: 23.5-25	
	RIM PITCH CIRCLE DIA: 425 MM	
	MAX.SPEED: 37KM/H	
	PRODUCT DESCRIPTION:	
	MOUNTING POSITION: FRONT AXLE	
	RATIO TOTAL: I=23,5	
	PLANETARY DRIVE: 6,353	
	BEVELGEAR: I=3,70 T=37/10	
	MOUNTING: SPRING MTG.POINTS L=860/1040	
	FLANGE DISTANCE: L=2140	
	WHEEL TRACK: 2150	
	BRAKE:	
	LAM.BREMSE/HY: 277*186	
	ANZAHL /4 DISCS: NUMBER/4	
	BRAKE CALCULATION:	
	DIFF.CARRIER:	
	TYPE: MK	
	SENS OF ROTATION:CLOCKWISE (INPUT)	
	CROWNWHEEL: SPIRALDIRECTION: RIGHT	
	CROWNWHEEL POSITON: LEFT	

Technical Cover

Page 2 from 2

Material number: 4474.006.127



AP 412 /

Pos.	Information	Amendment number
	FL.LAGE HYPOID:	
	INPUTFLANGE POSITION BEVEL GEAR: CENTER RIGHT	
	FLANGE CONN: AD=180*LZ=8*D=12.1	
	DIFFERENTIAL:	
	LIMITED-SLIP DIFFERENTIAL	
	TYPE: DL 2400	
	N 50 * 1,25 SIDE GEAR SPLINE	
	INTERLOCK VALUE: 45%	
	DRAWINGS:	
	SECT.DRAW.: 4474 006 130 (0)	
	INST. DRAW.: 4474 606 065 (0)	
	TEST SPECIFICATION: 4474 760 001/4474 760 003	
	INSTALLATION CHECK:	
	INSTAL.INSTRUCT:4474 700 020	
	RADBOLZENGWINDE MIT SCHUTZHUELSE VOR FARBE SCHUETZEN	
	PISTON STROKE 3,2-3,6 MM	
	SETTING INSTRUCTION PISTON STROKE 4474 700 002	
	OIL CAPACITY:	
	AXLE: APPROX:.....L	
	PLANETARY DRIVE/JE:CA.....L	
	TOTAL APPROX.L	
	OELFUELLUNG: NEIN	
	DETECTED OIL CAPACITY WITH FORMSHEET	
	NR.040 29 031 TO THE CORRESPONDING DEPARTMENT	
	OIL SPECIFICATION: TE-ML05 LUBRICATION CLASSES 5C/5D/5E	
	BRAKE CONTROLL ATF-OIL/MOTOROIL 10W	
	WEIGHT: KG	
	COLOR: 2 MAIS-YELLO RAL 1006	
	PACKING:	
	MISCELLANEOUS/REMARKS:QUANTITY OF LINED DISCS MUST BE	
	SIGNED	

Assembly group overview

Page 1 from 1

Material number: 4474.006.127



Picture	Pos.	Material number	Name	Quantity	Amend. no.	Techn. Info.
	10	4460.015.115	HK	1		
447410110000	20	4474.101.100	AXLE CASING	1		
447410100802	30	4474.101.481	AXLE CASING	1		
447410228500	40	4474.102.285	OUTPUT	1		
447410245900	50	4474.102.459	OUTPUT	1		

Picture

Page 1 from 1

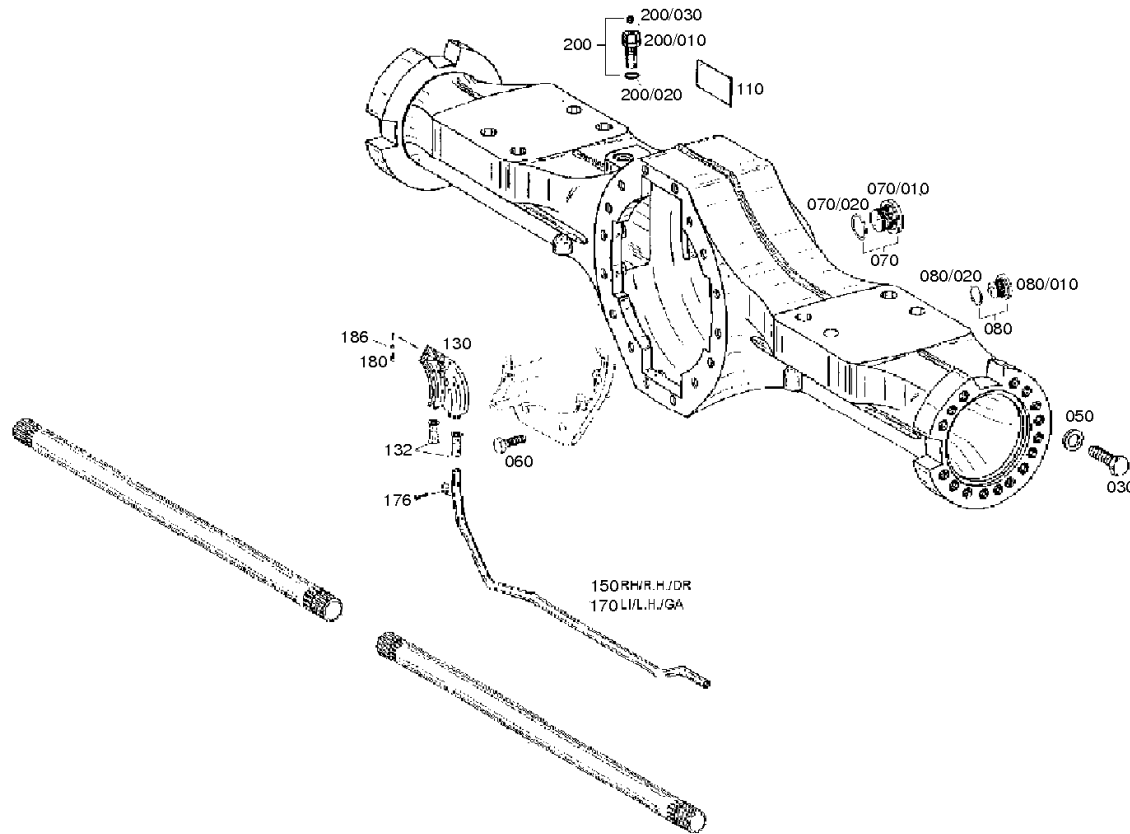
Material number: 4474.006.127

Picture: 447410110000

Material-assembly-group-no: 4474.101.100



AP 412 /
AXLE CASING



Picture

Page 1 from 1

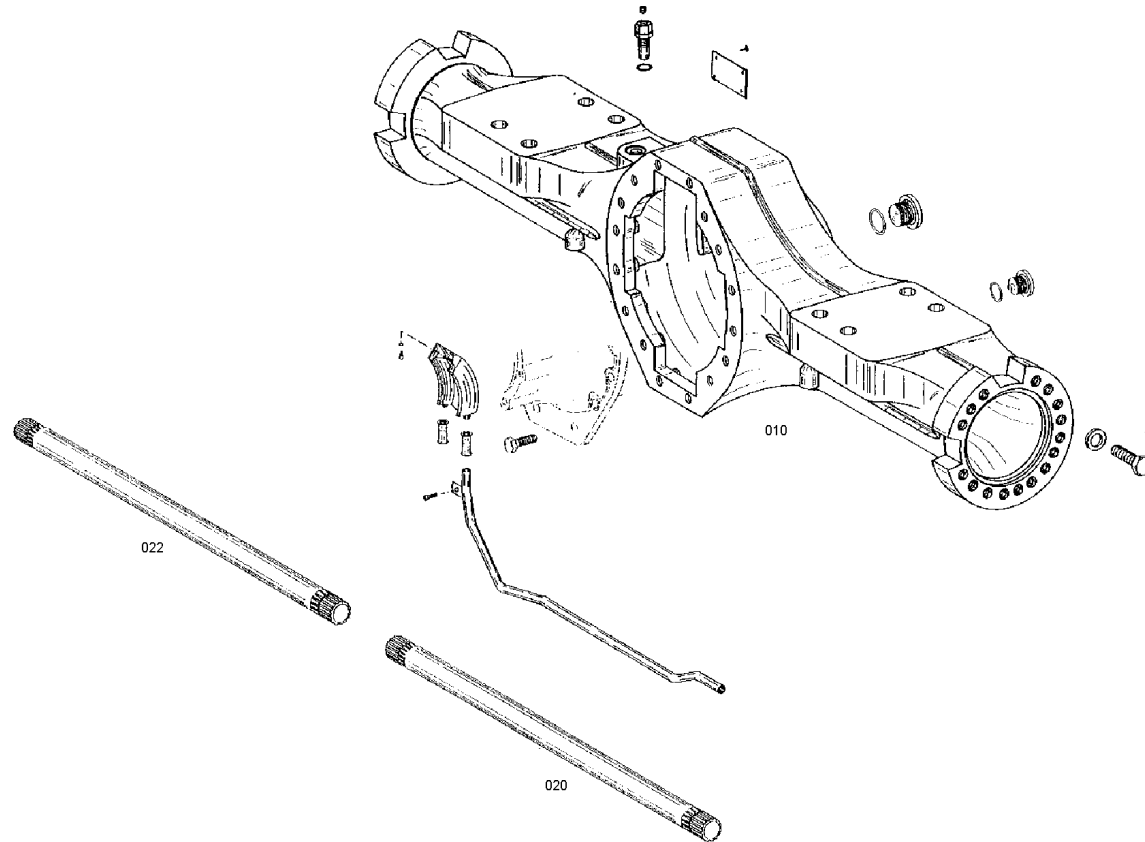
Material number: 4474.006.127

Picture: 447410100802

Material-assembly-group-no: 4474.101.481



AP 412 /
AXLE CASING



Picture

Page 1 from 1

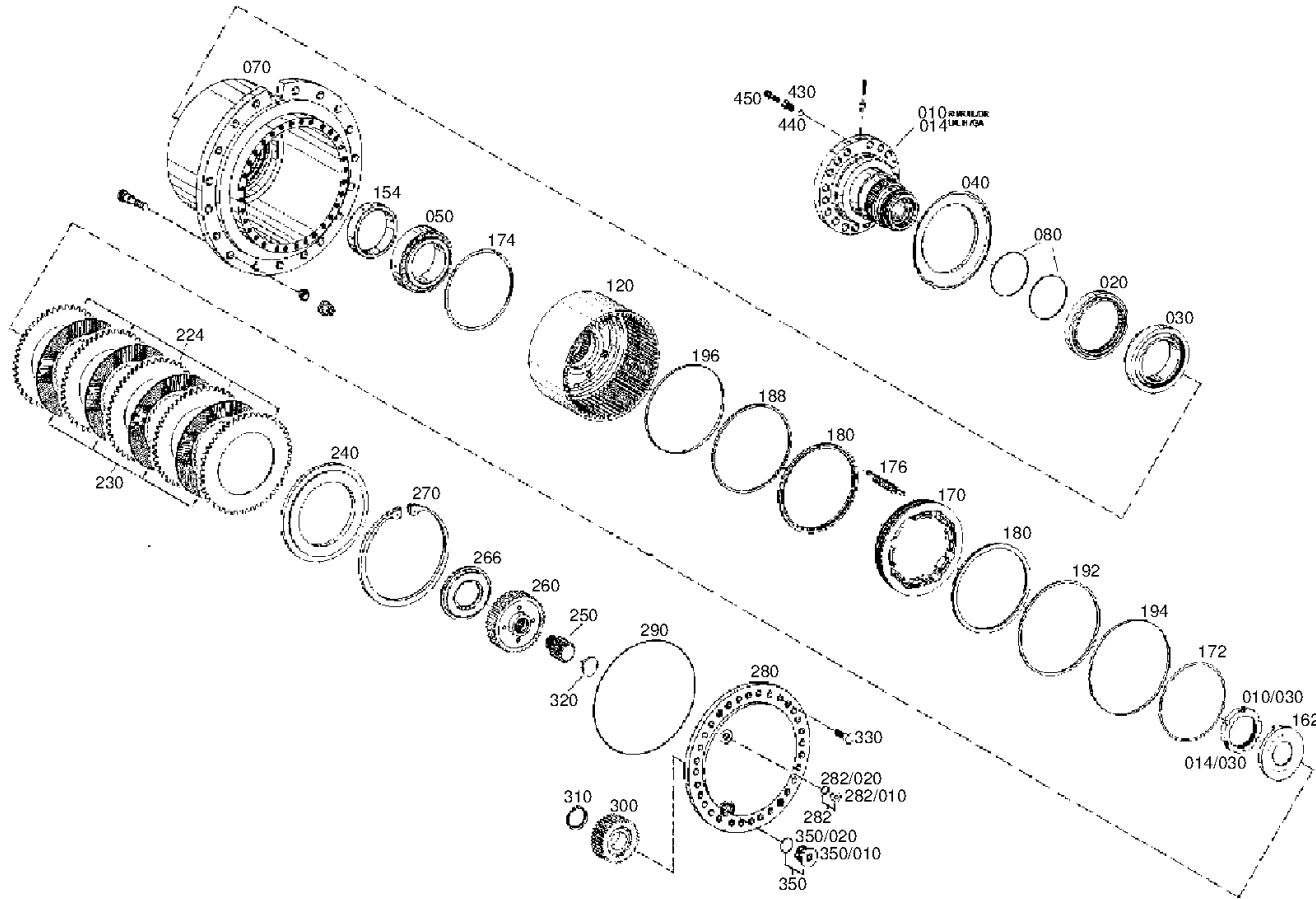
Material number: 4474.006.127

Picture: 447410228500

Material-assembly-group-no: 4474.102.285



AP 412 /
OUTPUT



Picture

Page 1 from 1

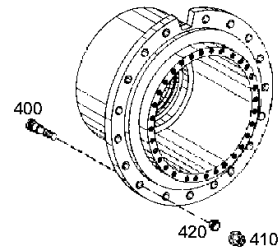
Material number: 4474.006.127

Picture: 447410245900

Material-assembly-group-no: 4474.102.459



AP 412 /
OUTPUT



Picture

Page 1 from 1

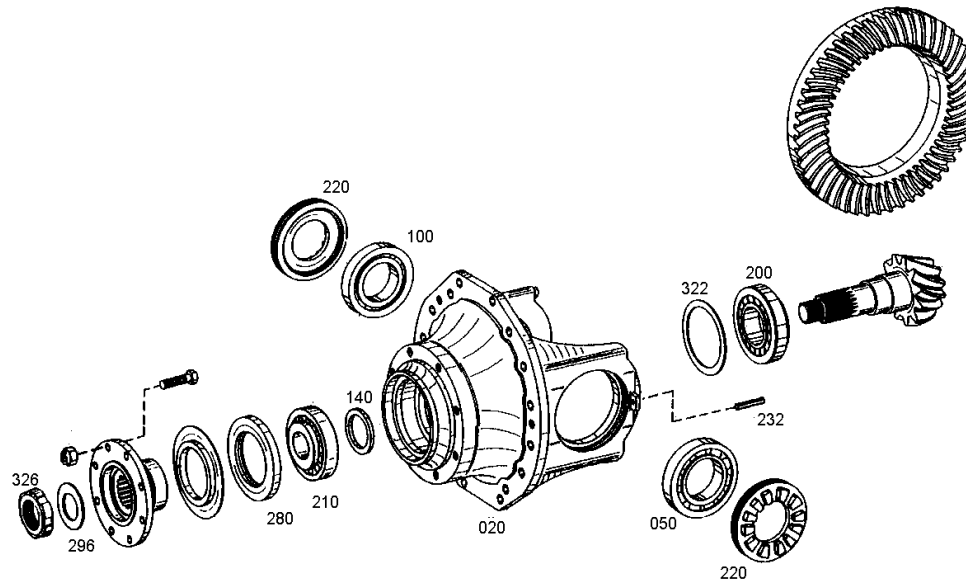
Material number: 4460.015.115

Picture: 446011500401

Material-assembly-group-no: 4460.115.054



AP 412 /
HOUSING



Picture

Page 1 from 1

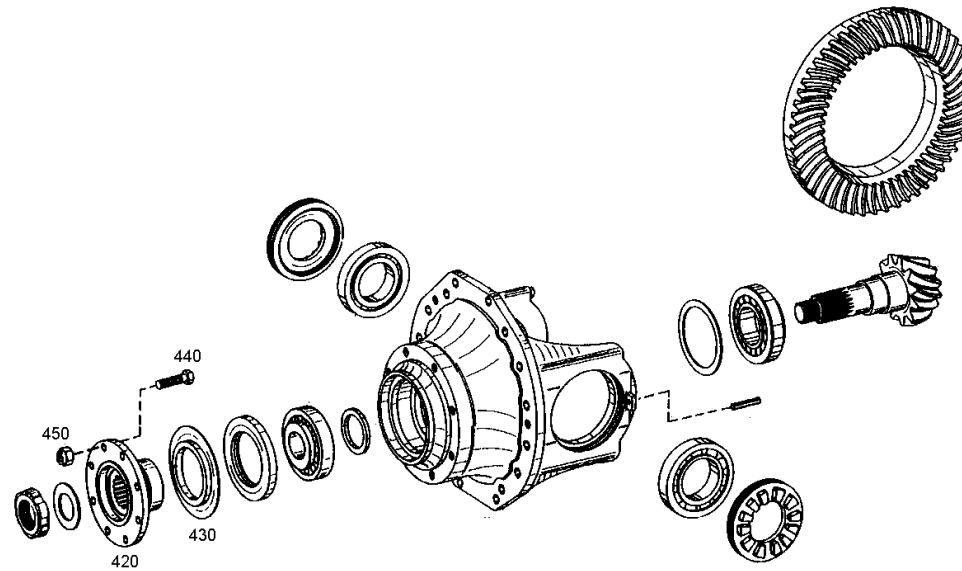
Material number: 4460.015.115

Picture: 446011500402

Material-assembly-group-no: 4460.125.631



AP 412 /
INPUT FLANGE



Picture

Page 1 from 1

Material number: 4460.015.115

Picture: 406101607000

Material-assembly-group-no: 4061.016.070



AP 412 /
LIMIT.SLIP DIFF

