



Spare Parts Catalog

MT-L 3085

Material number: 4474.052.053

Current date: 03.08.2022

ZF Friedrichshafen AG
Hauptverwaltung
80038 Friedrichshafen
Deutschland

Telefon: +49 7541 77-0

Telefax: +49 7541 77-908000

www.zf.com

zuständiges Werk:
Passau

Notes relating to the spare parts catalog

Setup of the spare parts catalog

- Cover sheet
- Technical Cover (only in SDM print)
- Overview of figures
- Figure
- Associated parts list
- Next figure
- Associated parts list
- ...

Figure and parts list



Overview of figures

| Bildtafel Figure | Sachnummer Product number | Benennung (Description) | Technische Info Technical info | Description (Benennung) | Menge Quantity | Einheit Unit |
|---------------------|------------------------------|----------------------------|-----------------------------------|----------------------------|-------------------|-----------------|
| 068.08.17 | 1316.170.001 | AUSLEGER | WL | SHIFT TURRET | 1 | Stk |
| 068.08.06 | 1316.170.031 | DECKEL | WL*H-H *VM | COVER | 1 | Stk |
| 068.08.14 | 1316.170.808 | DECKEL | WL*AUSL+GEH*H-H*HF160N | COVER | 1 | Stk |
| 08 | 1316.170.441 | ANSCHLUSSTEILE | WL*NG-VORB*RG-SCHL*168N *BAJONETT | CONNECTING PARTS | 1 | Stk |

The "gap" indicates that there is no separate graphics panel (poster) for this assembly
The parts of this assembly are shown with the same mid-section number on the figure

1 Positions and subpositions

| Pos. | Sachnummer Product number | Benennung (Description) | Technische Info Technical info | Description (Benennung) | Menge Quantity | Einheit Unit |
|-------|------------------------------|----------------------------|-----------------------------------|----------------------------|-------------------|-----------------|
| 0370 | 1315.201.054 | RUECKLAUFBOLZEN | KPL.16S151*SG*L= 79 | REV.IDLER SHAFT | 1 | Stk |
| /0120 | 0631.329.293 | SPANNSTIFT | | SLOT. PIN | 1 | Stk |

Positions marked with "/" are the individual items of a completion
For example: Position 0370 contains a centering pin with the position /0120

2 Combinations with standardized parts

| Pos. | Sachnummer Product number | Benennung (Description) | Technische Info Technical info | Description (Benennung) | Menge Quantity | Einheit Unit |
|------|------------------------------|----------------------------|-----------------------------------|----------------------------|-------------------|-----------------|
| 0630 | | VERSCHL.SCHR. | | SCREW PLUG | 1 | Stk |
| | 0636.302.067 | VERSCHL.SCHR. | | SCREW PLUG | 1 | Stk |
| | 0634.801.249 | DICHTRING | A 26 X 31 | SEALING RING | 1 | Stk |

The parts list shows the components included in the combination of standardized parts

3 Depiction of position/item number on the figure and in the parts list

01.620 - on the figure 01 relates to the assembly in which the position is included. Due to program-related reasons, it is shown on the figure.

0620 - in the parts list

| Pos. | Sachnummer Product number | Benennung (Description) | Technische Info Technical info | Description (Benennung) | Menge Quantity | Einheit Unit |
|------|------------------------------|----------------------------|-----------------------------------|----------------------------|-------------------|-----------------|
| 0620 | 0732.040.736 | DRUCKFEDER | | COMPRESSION SPRING | 1 | Stk |

4 *-Positions

Positions marked with an * are optional i.e. inclusion in the parts list is not mandatory.
The following note is shown on the figure

je nach Stücklistenausführung
depending on spec. number
*
suivant la nomenclature
secondo la distinta base

5 Parts, dotted display

Parts with dotted display on the figure are only used for orientation of other parts

Technical Cover

Page 1 from 2

Material number: 4474.052.053



MT-L 3085 /

| Pos. | Information | Amendment number |
|------|--------------------------------------|------------------|
| | KUNDE:LIEBHERR-BISCHOFSHOFEN | |
| | IDENT-NR:1002 2957 | |
| | QUESTIONNAIRE: | |
| | PROJEKT-NR.:33135 | |
| | VEHICLE DATA: | |
| | RADLADER L 544 | |
| | MOTOR: LIEBHERR D 906 TB | |
| | ENGINE POWER: P=121KW IN N=2000 UPM | |
| | DREHMOMENT: T= 690 NM BEI N=1200 UPM | |
| | TRANSMISSION: ZF 3AVG-210 | |
| | TYRES: SINGLE | |
| | TYRES: 20.5-25 | |
| | RIM PITCH CIRCLE DIA: 425 MM | |
| | V-MAX: 38,00KM | |
| | PRODUCT DESCRIPTION: | |
| | AXLE ARRANGEMENT: REAR AXLE | |
| | RATIO TOTAL: I=23,34 | |
| | PLANETENTRIEB: I= 6,00 P3-360-50 | |
| | BEVELGEAR SET: I= 3,89 T=35/9 | |
| | BEFESTIGUNG: FEDERSPUR L= 870/1130 | |
| | FLANGE DISTANCE: L=2083 | |
| | WHEEL TRACK: L=2000 | |
| | BRAKE: | |
| | MULTI-DISC BRAKE: HYDR. 345X264 | |
| | PARKING BRAKE: WITHOUT | |
| | LINED DISC: 4 PIECES | |
| | BRAKE CALCULATION | |
| | DIFF.CARRIER: | |
| | TYPE: DK | |
| | SENS OF ROTATION:CLOCKWISE | |
| | RING GEAR: SPIRAL DIRECTION RIGHT | |
| | POSITION OF RING GEAR:RIGHT | |
| | FLANGE POS.BEVEL DRIVE: MIDDLE | |

Technical Cover

Page 2 from 2

Material number: 4474.052.053



MT-L 3085 /

| Pos. | Information | Amendment number |
|------|--|------------------|
| | FLANGE CONN:AD=150 8X12,1 | |
| | LIMITED-SLIP DIFFERENTIAL | |
| | TYPE: DL 1600 | |
| | BEVEL SIDE GEAR SPLINE: N 50X1,25 | |
| | INTERLOCK VALUE: 45 PER CENT (%) | |
| | DRAWINGS: | |
| | SECT.DRAWING: 4474 052 006(0) | |
| | EINBAU: 4474 652 035(0) | |
| | TEST INSTRUCT.: 4474 760 004 (3) | |
| | TEST INSTRUCT. 4474 760 005(2) | |
| | ASSEMBLY INSTRUCTION: | |
| | COVER MOUNTING FACE OF RIM WITHOUT PAINT AND PROTECTED AGAINST CORROSIN | |
| | AUTOMATIC BRAKE ADJUSTING DEVICE | |
| | AXIAL PLAY SUN 0,5 - 2,0 MM | |
| | OIL CAPACITY: | |
| | OIL FILLING: YES | |
| | OIL SPECIFICATION:SAE 90 LS SPEZ.MIL-L 2105 D | |
| | BRAKE CONTROL: ATF-OIL/MOTOROIL 10 W | |
| | GESAMT-TROCKENMASSE: 816KG | |
| | COLOUR: LIEBHERRGELB | |
| | PACKING: | |
| | MISCELLANEOUS/REMARKS: | |
| | QUANTITY OF LINED DISCS IN TYPE PLATE PUNCH MARK | |
| | * | |

Assembly group overview

Page 1 from 1

Material number: 4474.052.053



MT-L 3085 /

| Picture | Pos. | Material number | Name | Quantity | Amend. no. | Techn. Info. |
|--------------|------|-----------------|-----------------|----------|------------|--------------|
| | 130 | 4475.280.153 | CONNECTING PART | 2 | | |
| 446006603601 | 10 | 4460.066.036 | AXLE INSERT | 1 | | |
| 447414502550 | 20 | 4474.145.025 | AXLE CASING | 1 | | |
| 447414542850 | 30 | 4474.145.428 | AXLE CASING | 1 | | |
| 447414608400 | 40 | 4474.146.084 | OUTPUT | 2 | | |
| 447414701100 | 70 | 4474.147.011 | BRAKE | 2 | | |
| 414313900300 | 80 | 4143.139.003 | TYPE PLATE | 1 | | |

Parts list

Page 1 from 1

Material number: 4474.052.053

Material-assembly-group-no: 4475.280.153



MT-L 3085 /

| | Pos. | Material number | Customer material | Name | Quantity | ME | Amend. no. | Techn. Info. | Rep kit | Alternative material |
|--|------|-----------------|-------------------|------------------|----------|----|------------|--------------|---------|----------------------|
| | 10 | 4474.354.037 | | CONNECTING PART | 1 | | | M22X1,5X88 | | |
| | 20 | 0634.303.485 | | O-RING | 1 | | | 33X2 | | |
| | 30 | 0634.312.586 | | RECTANGULAR RING | 1 | | | | | |
| | 40 | 0501.202.519 | | VENT VALVE | 1 | | | | | |
| | 50 | 0636.305.019 | | SCREW PLUG | 1 | | | M26X1,5 | | |
| | 60 | 0634.801.165 | | SEALING RING | 1 | | | 26X31 | | |

Picture

Page 1 from 2

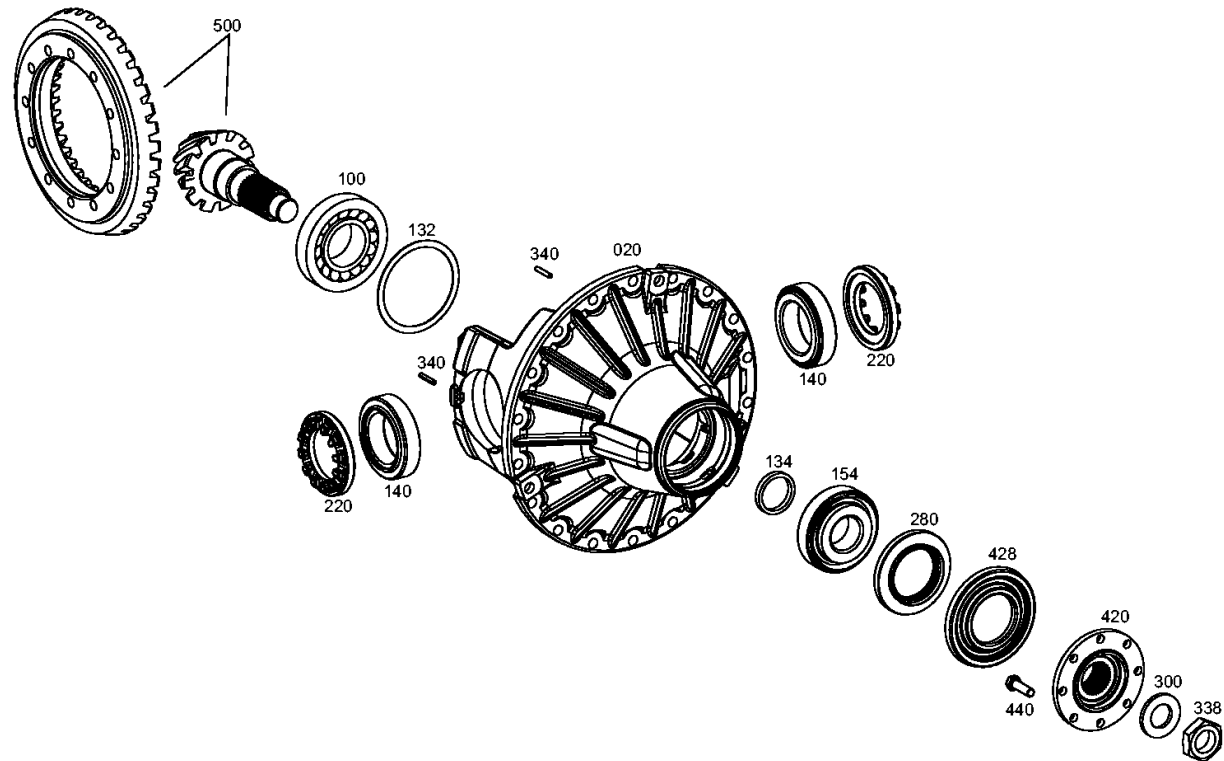
Material number: 4474.052.053

Picture: 446006603601

Material-assembly-group-no: 4460.066.036



MT-L 3085 /
AXLE INSERT



Picture

Page 2 from 2

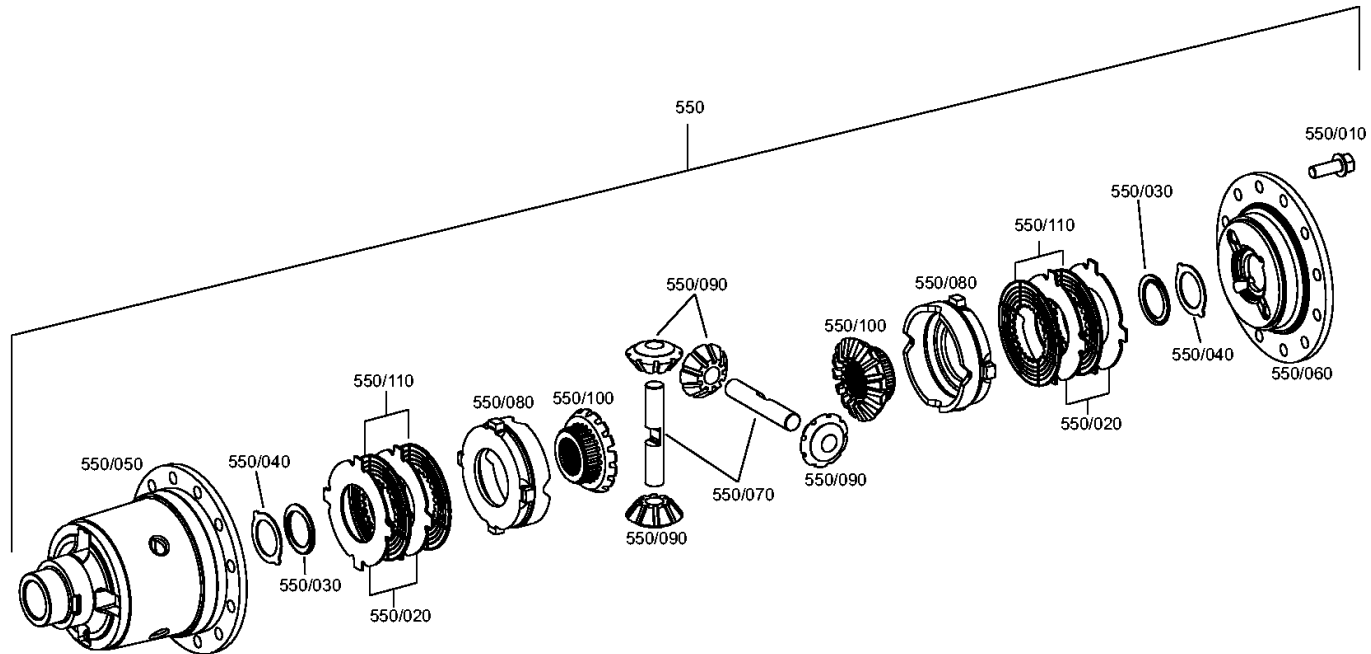
Material number: 4474.052.053

Picture: 446006603602

Material-assembly-group-no: 4460.066.036



MT-L 3085 /
AXLE INSERT



Picture

Page 1 from 1

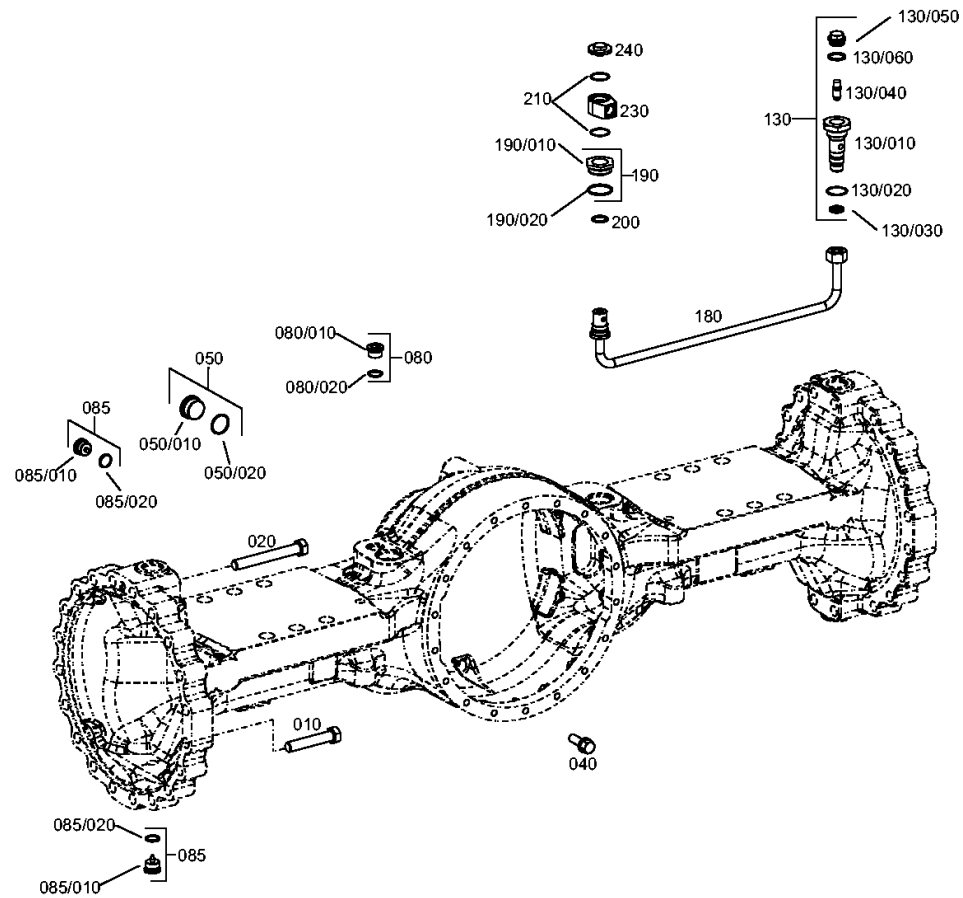
Material number: 4474.052.053

Picture: 447414502550

Material-assembly-group-no: 4474.145.025



MT-L 3085 /
AXLE CASING



Picture

Page 1 from 1

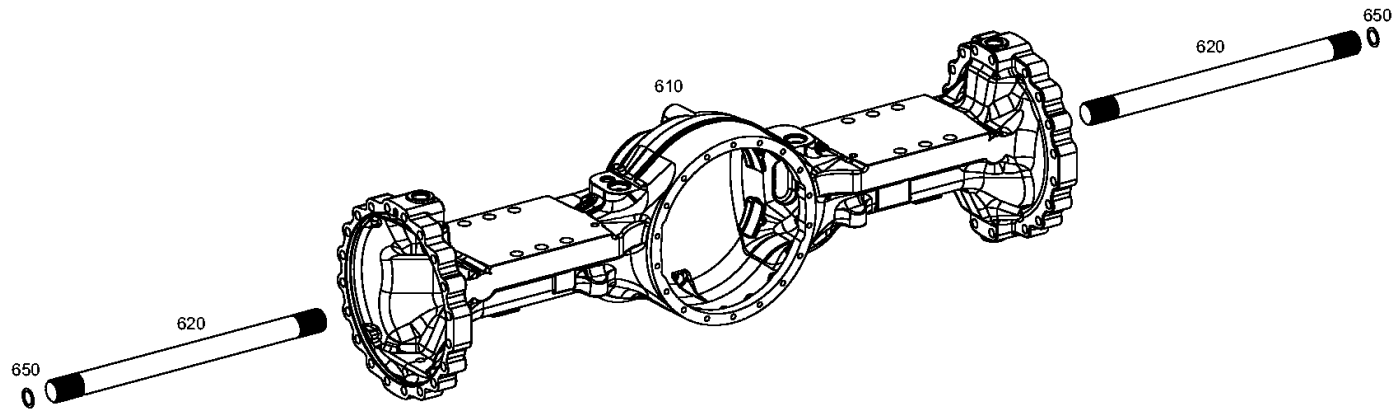
Material number: 4474.052.053

Picture: 447414542850

Material-assembly-group-no: 4474.145.428



MT-L 3085 /
AXLE CASING



Picture

Page 1 from 1

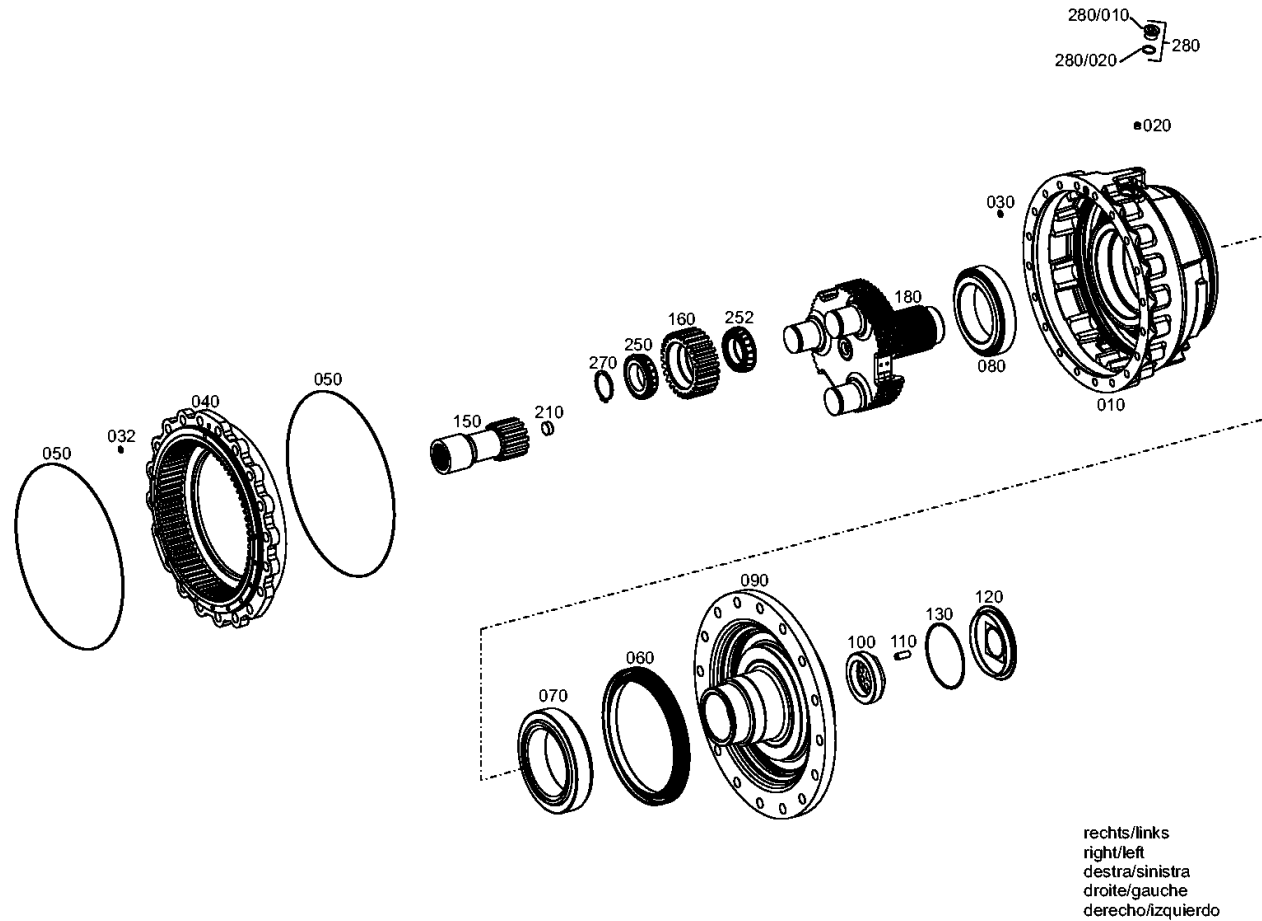
Material number: 4474.052.053

Picture: 447414608400

Material-assembly-group-no: 4474.146.084



MT-L 3085 /
OUTPUT



Picture

Page 1 from 1

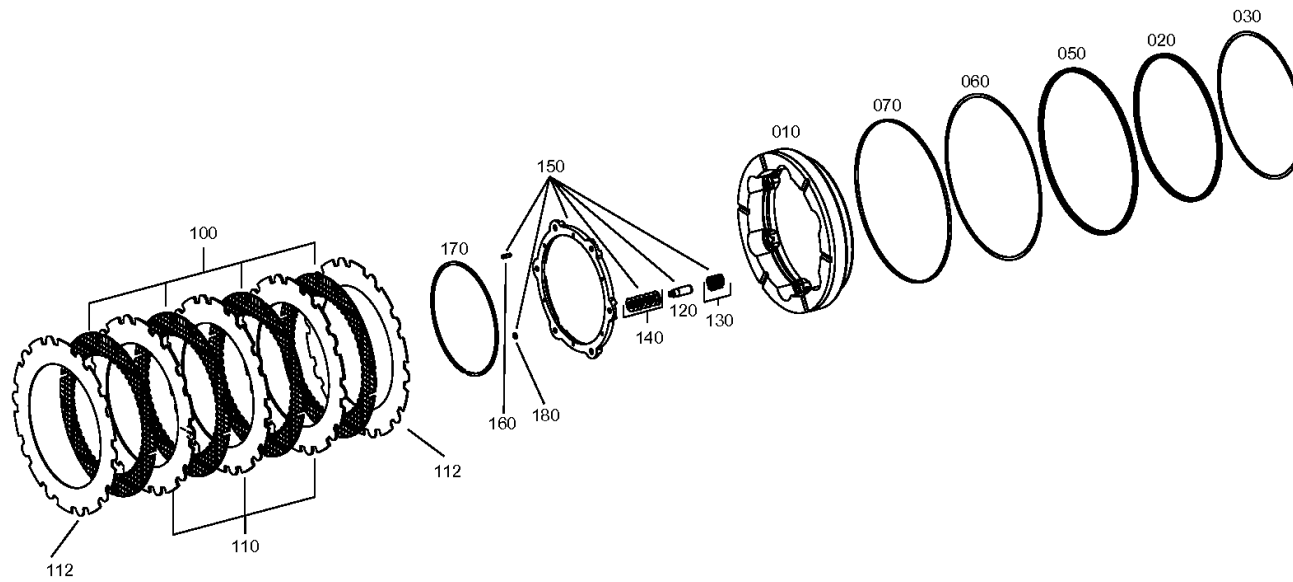
Material number: 4474.052.053

Picture: 447414701100

Material-assembly-group-no: 4474.147.011



MT-L 3085 /
BRAKE



Picture

Page 1 from 1

Material number: 4474.052.053

Picture: 414313900300

Material-assembly-group-no: 4143.139.003



MT-L 3085 /
TYPE PLATE

