



Spare Parts Catalog

MT-L 3085 II

Material number: 4474.052.250

Current date: 21.09.2023

ZF Friedrichshafen AG
Hauptverwaltung
80038 Friedrichshafen
Deutschland

Telefon: +49 7541 77-0

Telefax: +49 7541 77-908000

www.zf.com

zuständiges Werk:
Passau

Notes relating to the spare parts catalog

Setup of the spare parts catalog

- Cover sheet
- Technical Cover (only in SDM print)
- Overview of figures
- Figure
- Associated parts list
- Next figure
- Associated parts list
- ...

Figure and parts list



Overview of figures

Bildtafel Figure	Sachnummer Product number	Benennung (Description)	Technische Info Technical info	Description (Benennung)	Menge Quantity	Einheit Unit
068.08.17	1316.170.001	AUSLEGER	WL	SHIFT TURRET	1	Stk
068.08.06	1316.170.031	DECKEL	WL*H-H *VM	COVER	1	Stk
068.08.14	1316.170.808	DECKEL	WL*AUSL+GEH*H-H*HF160N	COVER	1	Stk
08	1316.170.441	ANSCHLUSSTEILE	WL*NG-VORB*RG-SCHL*168N *BAJONETT	CONNECTING PARTS	1	Stk

The "gap" indicates that there is no separate graphics panel (poster) for this assembly
The parts of this assembly are shown with the same mid-section number on the figure

1 Positions and subpositions

Pos.	Sachnummer Product number	Benennung (Description)	Technische Info Technical info	Description (Benennung)	Menge Quantity	Einheit Unit
0370	1315.201.054	RUECKLAUFBOLZEN	KPL.16S151*SG*L= 79	REV.IDLER SHAFT	1	Stk
/0120	0631.329.293	SPANNSTIFT		SLOT. PIN	1	Stk

Positions marked with "/" are the individual items of a completion
For example: Position 0370 contains a centering pin with the position /0120

2 Combinations with standardized parts

Pos.	Sachnummer Product number	Benennung (Description)	Technische Info Technical info	Description (Benennung)	Menge Quantity	Einheit Unit
0630		VERSCHL.SCHR.		SCREW PLUG	1	Stk
	0636.302.067	VERSCHL.SCHR.		SCREW PLUG	1	Stk
	0634.801.249	DICHTRING	A 26 X 31	SEALING RING	1	Stk

The parts list shows the components included in the combination of standardized parts

3 Depiction of position/item number on the figure and in the parts list

01.620 - on the figure 01 relates to the assembly in which the position is included. Due to program-related reasons, it is shown on the figure.

0620 - in the parts list

Pos.	Sachnummer Product number	Benennung (Description)	Technische Info Technical info	Description (Benennung)	Menge Quantity	Einheit Unit
0620	0732.040.736	DRUCKFEDER		COMPRESSION SPRING	1	Stk

4 *-Positions

Positions marked with an * are optional i.e. inclusion in the parts list is not mandatory.
The following note is shown on the figure

je nach Stücklistenausführung
depending on spec. number
*
suivant la nomenclature
secondo la distinta base

5 Parts, dotted display

Parts with dotted display on the figure are only used for orientation of other parts

Technical Cover

Page 1 from 2

Material number: 4474.052.250



MT-L 3085 II /

Pos.	Information	Amendment number
	VEHICLE DATA: -----	
	CUSTOMER: HHI	
	CUSTOMER-IDENT-NO.: 81LM-11020	
	VEHICLE DESIGNATION: HL 757-9A	
	TYRE SIZE: 20.5-25	
	TYRE RADIUS DYN.: 0,704 M	
	MAX. SPEED: 40 KM/H	
	TRACK WIDTH: 2.050 MM	
	PRODUCT DESCRIPTION: ZF- MULTITRAC-AXLE	
	VEHICLE TYPE: WHEEL LOADER	
	AXLE TYPE: MT-L 3085 II	
	VERSION: RIGID	
	AXLE ARRANGEMENT: FRONT AXLE	
	DIRECTION OF ROTATION: CW	
	CROWN WHEEL POSITION: LEFT	
	SPIRAL DIRECTION: RIGHT	
	INPUT FLANGE: MECH 7 C	
	FLANGE TO FLANGE DIM.: 1.984 MM	
	AXLE INSTALLATION: SPRING PAD	
	MOUNTING DIMENSIONS: 740X870X1000X1130 16XD=27	
	BRAKE TUBE: INTERNAL	
	MAIN DIFFERENTIAL: LIMITED-SLIP DIFFERENTIAL	
	DIFFERENTIAL TYPE/SIZE: DL-2400/HKV	
	LOCKING RATIO: 45%	
	AXLE RATIO: 23,334	
	PLANETARY DRIVE: P3, I=6,0	
	SEALING TYPE OF SHAFT S STANDARD	
	BRAKE : SERVICE BRAKE	
	SERVICE BRAKE : 2X MULTI-DISC BRAKE 345X264X4	
	MULTI-DISC BRAKE: PAPER-LINED CLUTCH DISC	
	PISTON SEAL: STANDARD	
	BRAKE PORT SIZE: M18 X 1,5 VERTIKAL	
	RIM PITCH CIRCLE DIAM.: 425,00 MM	



Pos.	Information	Amendment number
	WHEEL CONNECTION: BOLT 12 X M22 X 1,5	
	WHEEL NUTS: WITH	
	OIL FILLING AXLE DRIVE: WITH	
	OIL FILLER: STANDARD	
	AXLE OIL COOLING: WITHOUT	
	OIL - GRADE AXLE DRIVE: TE ML 05 (TITAN POWERFLUID)	
	OIL - GRADE ALLOWED: TE ML 05 C/D/E/F/G	
	PRIMER PAINT: YELLOW RAL 1006	
	PAINT-FREE AREA: INPUT FLANGE	
	TYPE PLATE	
	TYPE PLATE: ZF- STANDARD	
	AXLE BREATHER: WITH	
	OIL FILL QUANTITY CA: 1,00 L	
	DOCUMENTATION: -----	
	SECTION DRAWING: 4474.053.210	
	INSTALLATION DRAWING: 4474.652.244	
	INSTALLATION INSTRUCTIO 4474.700.088	
	TESTING INSTRUCTION: 4474.760.009	
	REMARKS: ÖLMENGE AUSLITERN	

Assembly group overview

Page 1 from 1

Material number: 4474.052.250



MT-L 3085 II /

Picture	Pos.	Material number	Name	Quantity	Amend. no.	Techn. Info.
447415303100	60	4474.153.031	AXLE DRIVE HOUSING	1		
447415402250	10	4474.154.022	INPUT	1		
446012506100	20	4460.125.061	INPUT FLANGE	1		
448117105350	30	4481.171.053	LIMIT.SLIP DIFF	1		
447415504400	70	4474.155.044	AXLE CASING	1		
447415617100	130	4474.156.171	OUTPUT	1		
447415702500	40	4474.157.025	BRAKE	1		
447415504400	80	4474.155.044	AXLE CASING	1		
447415617100	140	4474.156.171	OUTPUT	1		
447415702500	50	4474.157.025	BRAKE	1		
447415804500	160	4474.158.045	AXLE PARTS	1		
447429822100	KIT	4474.298.221	WHEEL HEAD	1		

Picture

Page 1 from 1

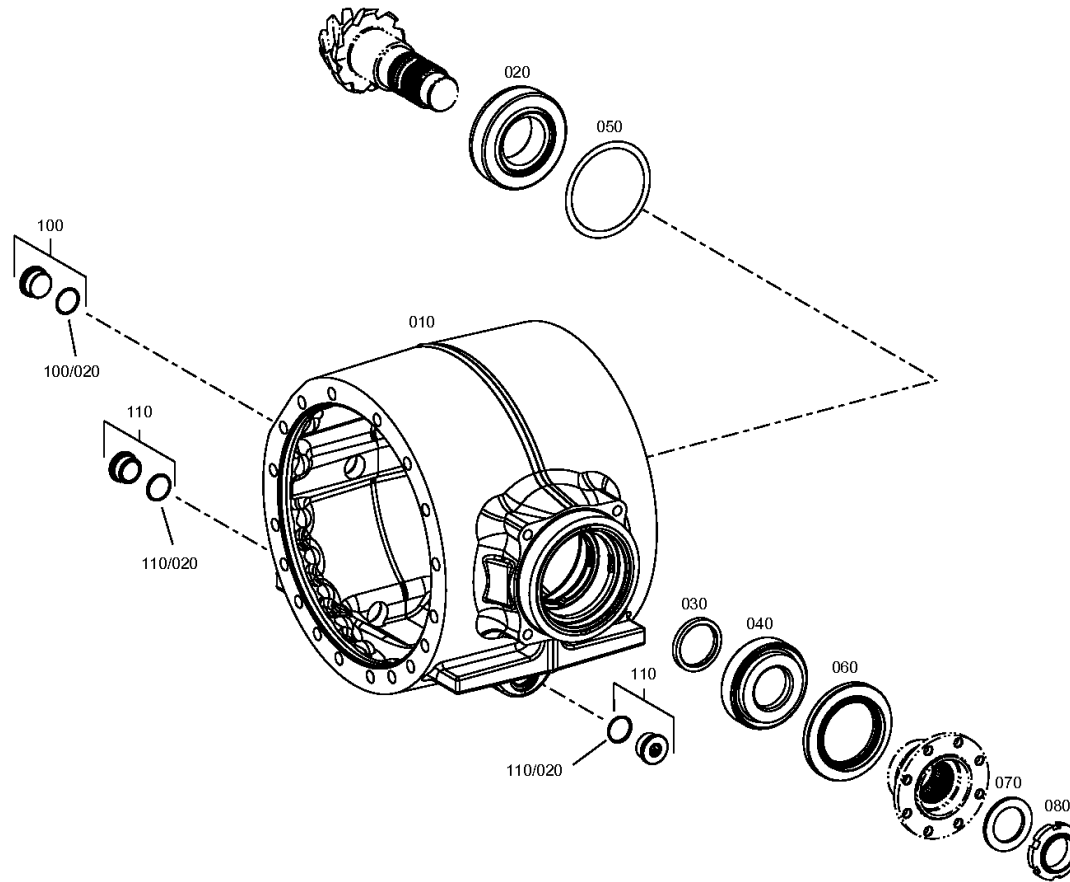
Material number: 4474.052.250

Picture: 447415303100

Material-assembly-group-no: 4474.153.031



MT-L 3085 II /
AXLE DRIVE HOUSING



Picture

Page 1 from 1

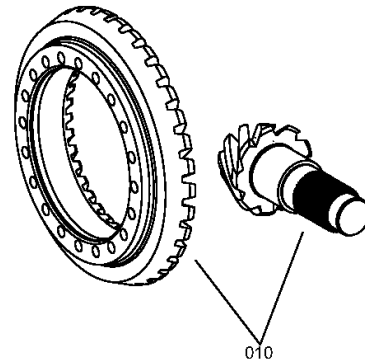
Material number: 4474.052.250

Picture: 447415402250

Material-assembly-group-no: 4474.154.022



MT-L 3085 II /
INPUT



Picture

Page 1 from 1

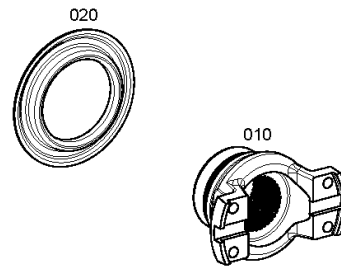
Material number: 4474.052.250

Picture: 446012506100

Material-assembly-group-no: 4460.125.061



MT-L 3085 II /
INPUT FLANGE



Picture

Page 1 from 1

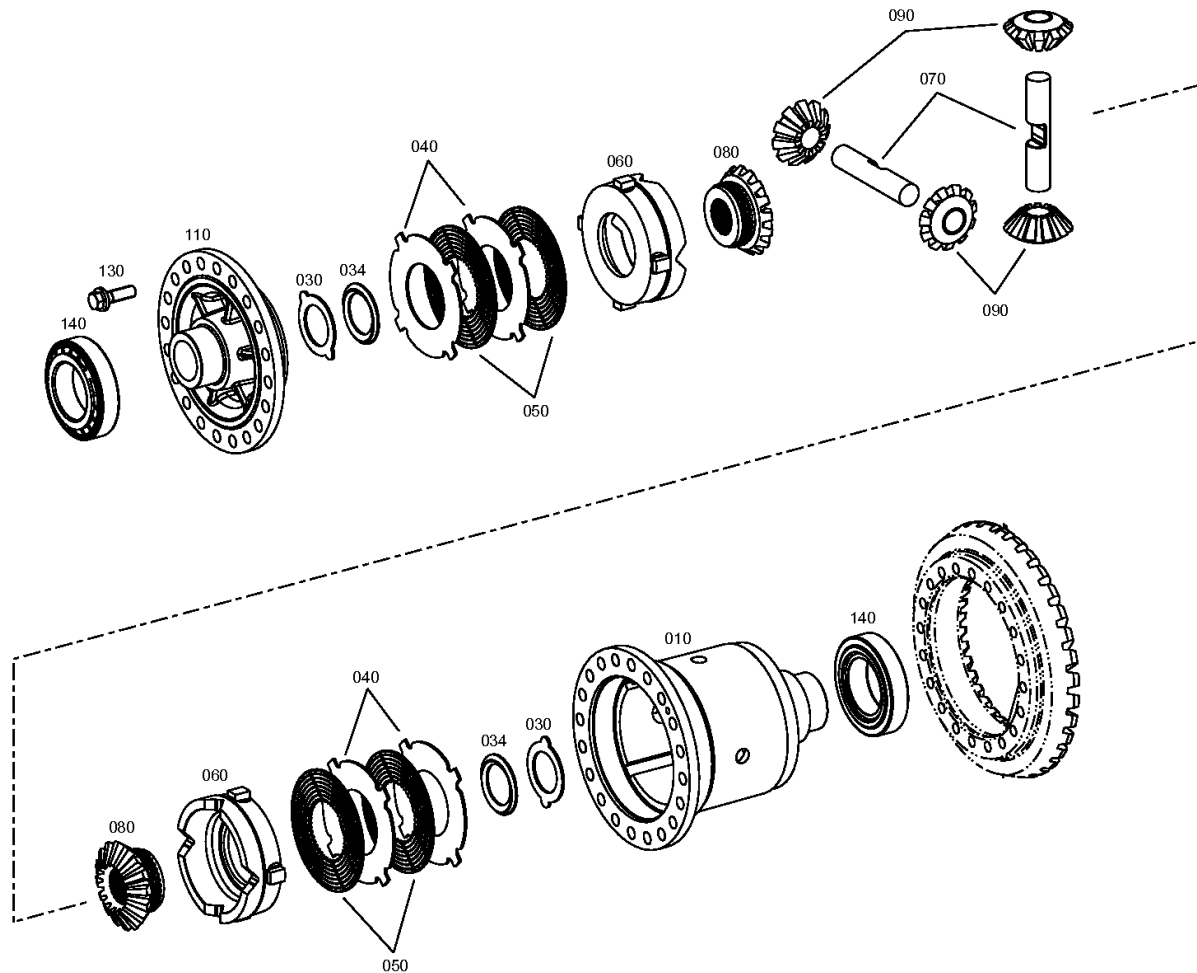
Material number: 4474.052.250

Picture: 448117105350

Material-assembly-group-no: 4481.171.053



MT-L 3085 II /
LIMIT.SLIP DIFF



Picture

Page 1 from 1

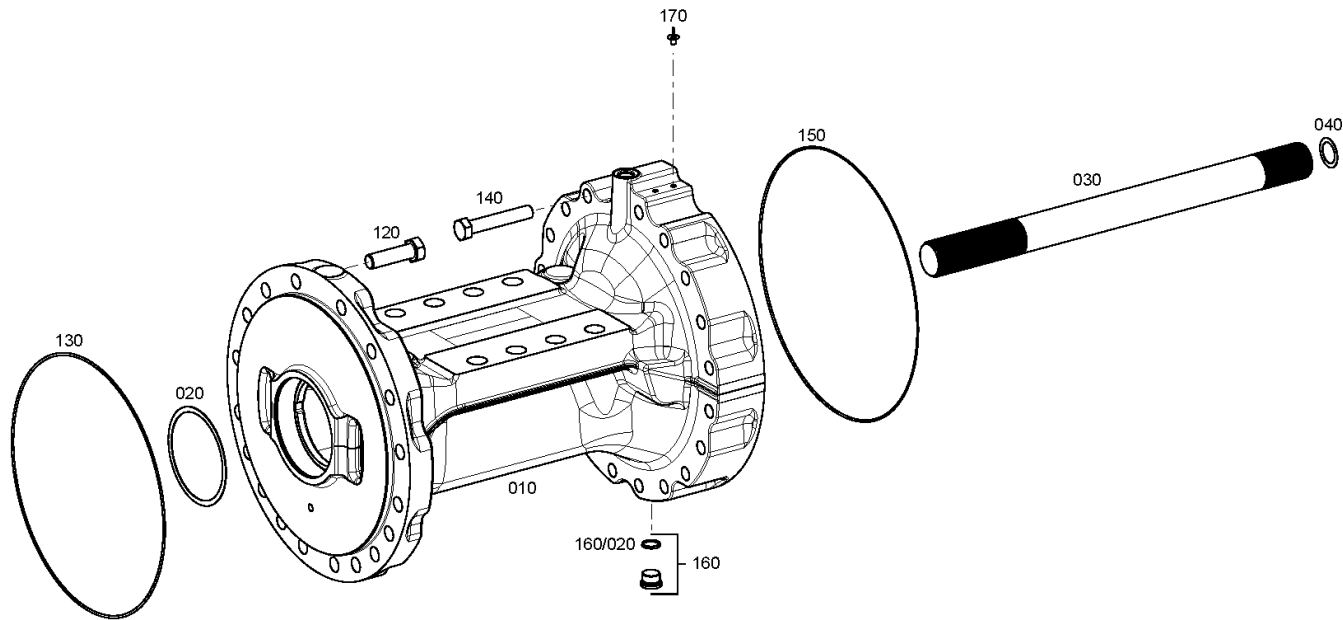
Material number: 4474.052.250

Picture: 447415504400

Material-assembly-group-no: 4474.155.044



MT-L 3085 II /
AXLE CASING



Picture

Page 1 from 1

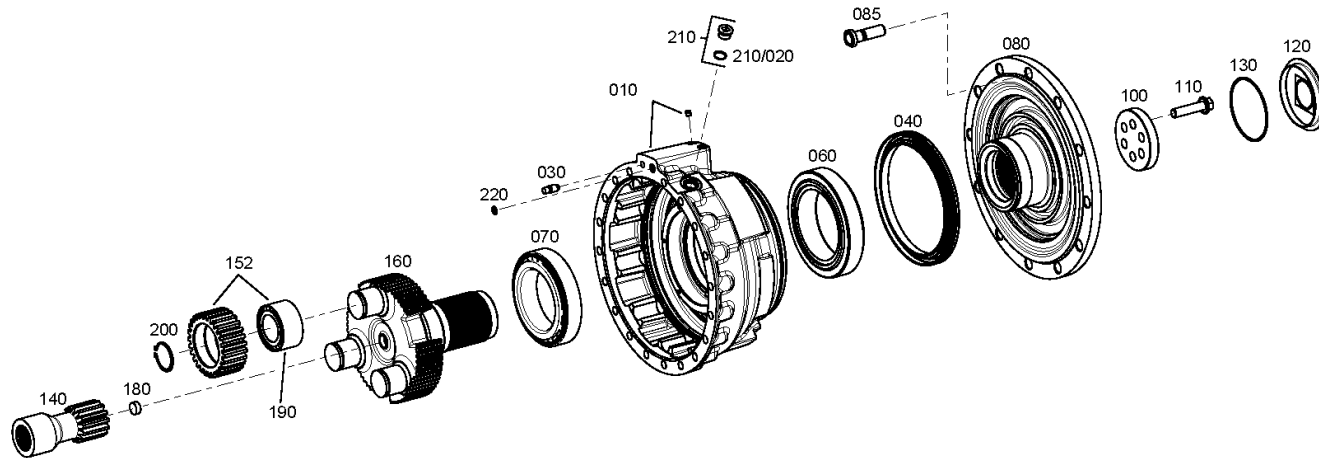
Material number: 4474.052.250

Picture: 447415617100

Material-assembly-group-no: 4474.156.171



MT-L 3085 II /
OUTPUT



Picture

Page 1 from 1

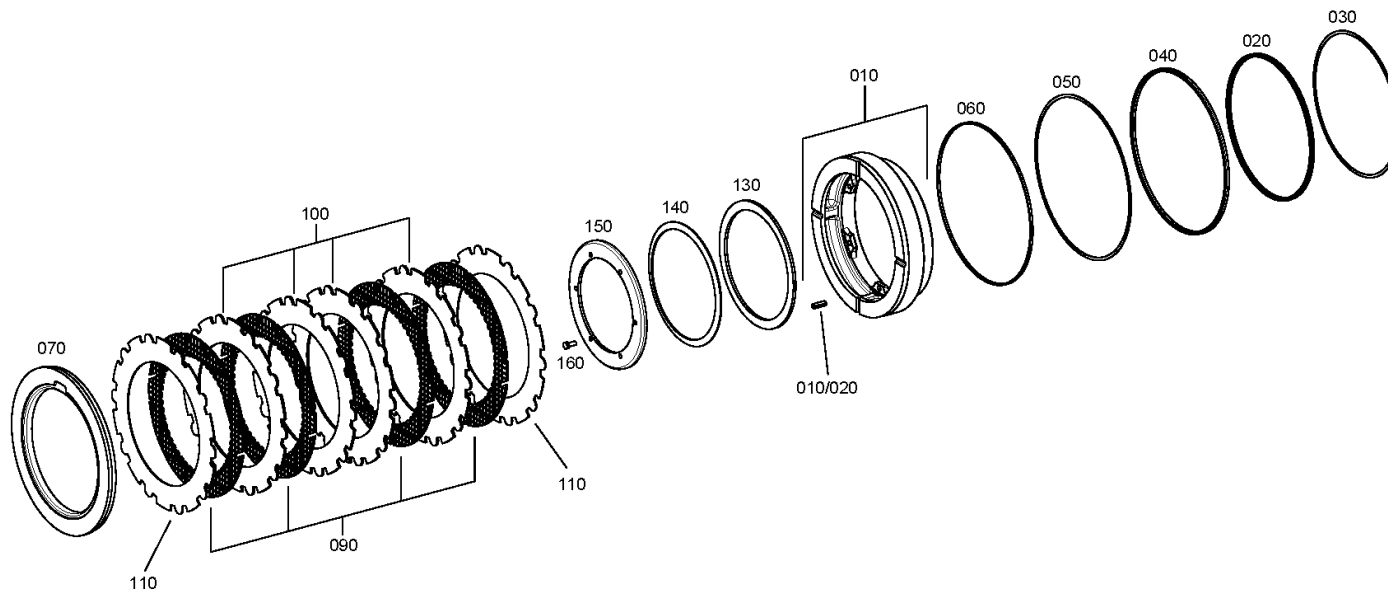
Material number: 4474.052.250

Picture: 447415702500

Material-assembly-group-no: 4474.157.025



MT-L 3085 II /
BRAKE



Picture

Page 1 from 1

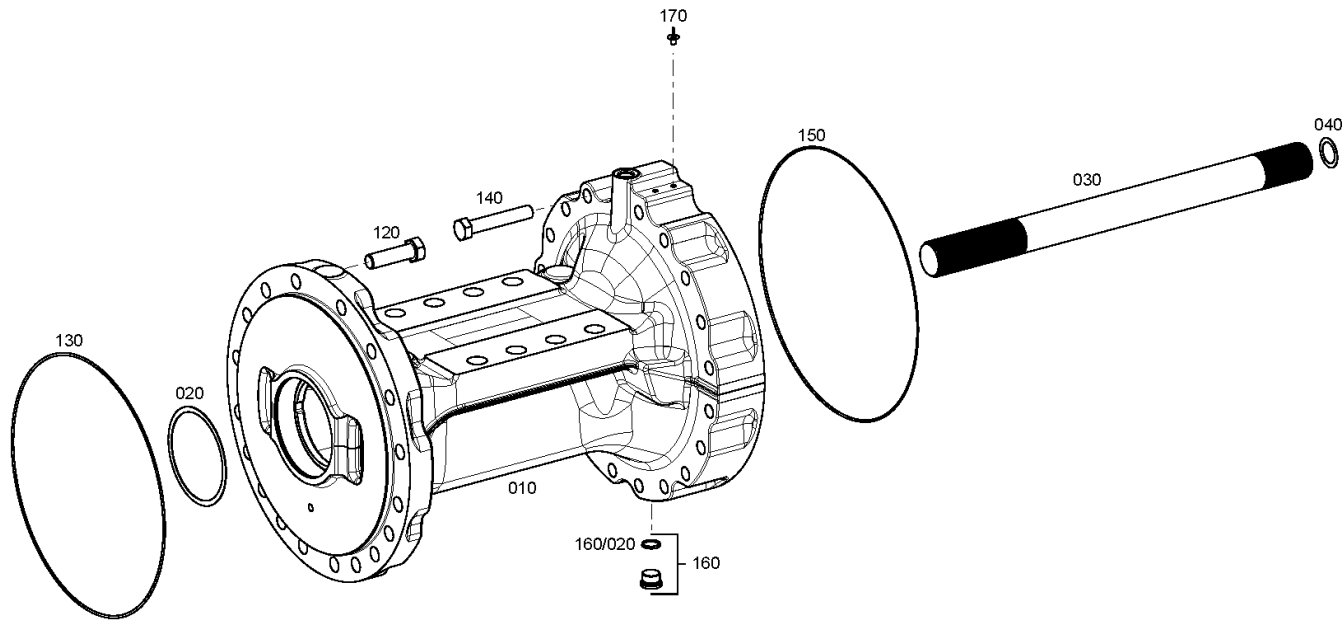
Material number: 4474.052.250

Picture: 447415504400

Material-assembly-group-no: 4474.155.044



MT-L 3085 II /
AXLE CASING



Picture

Page 1 from 1

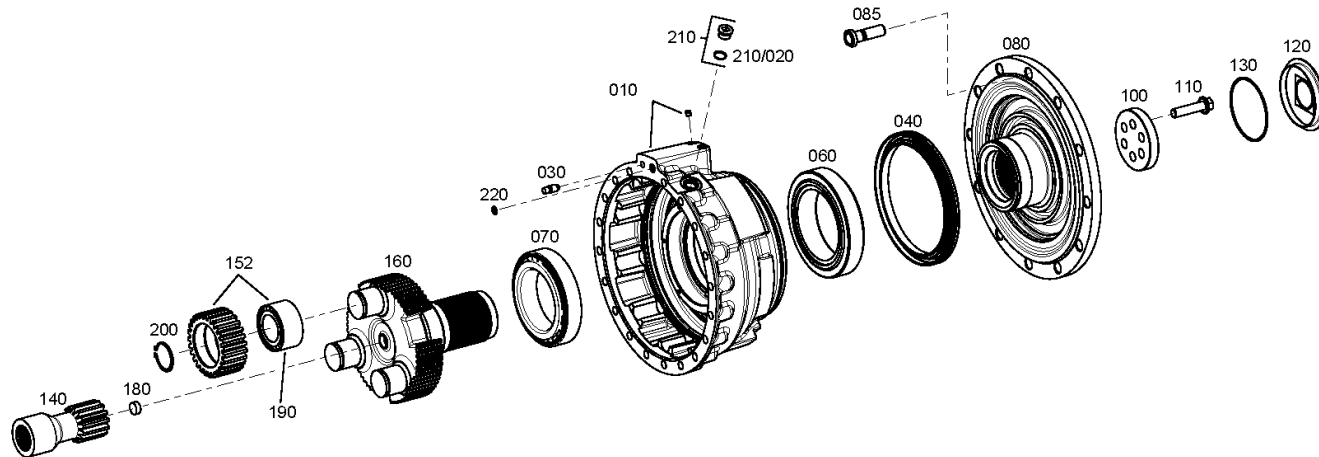
Material number: 4474.052.250

Picture: 447415617100

Material-assembly-group-no: 4474.156.171



MT-L 3085 II /
OUTPUT



Picture

Page 1 from 1

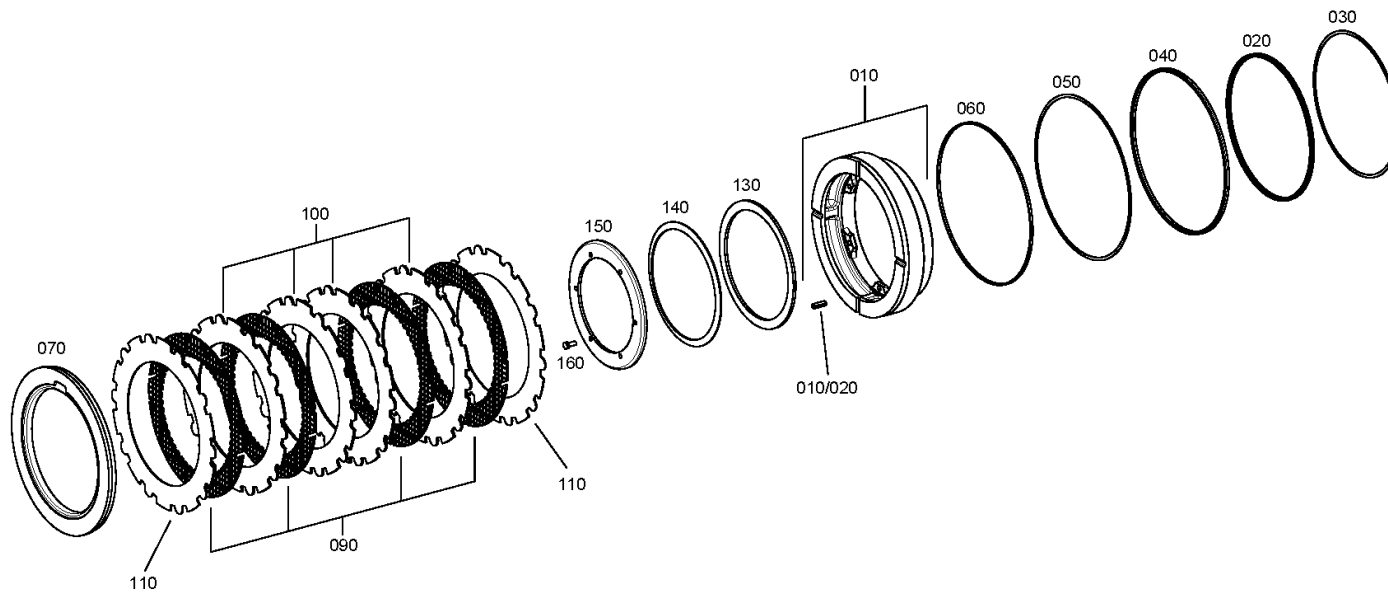
Material number: 4474.052.250

Picture: 447415702500

Material-assembly-group-no: 4474.157.025



MT-L 3085 II /
BRAKE



Picture

Page 1 from 1

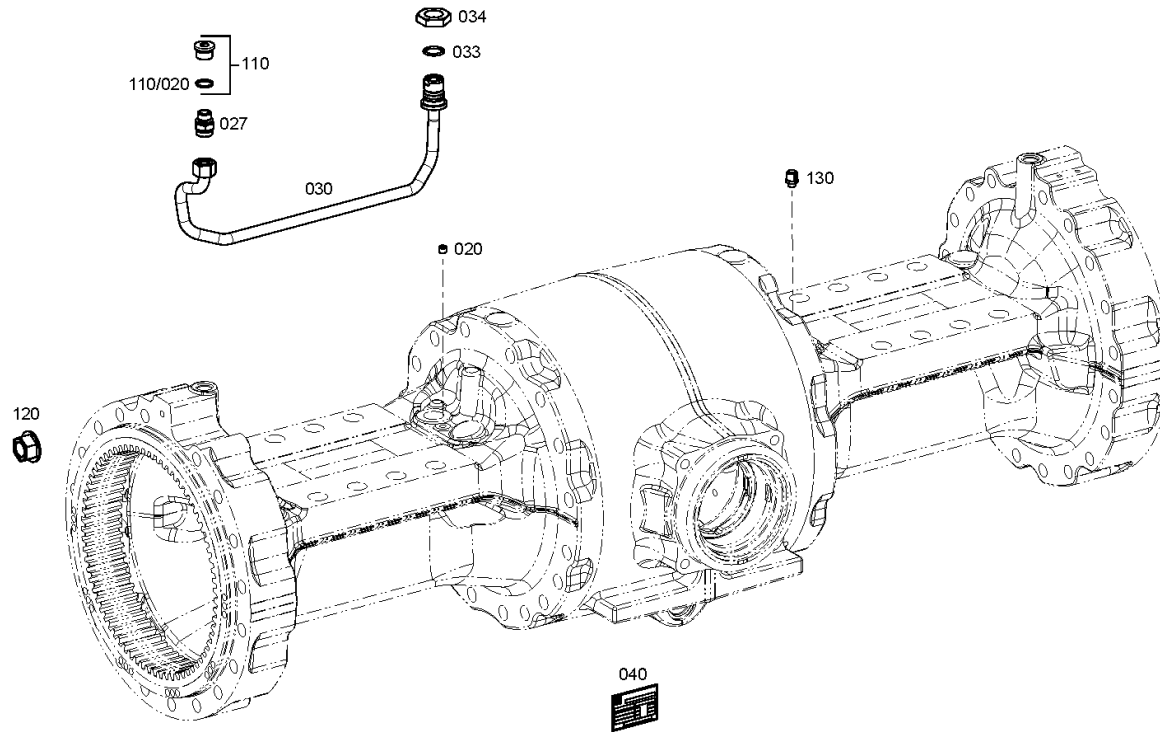
Material number: 4474.052.250

Picture: 447415804500

Material-assembly-group-no: 4474.158.045



MT-L 3085 II /
AXLE PARTS



Picture

Page 1 from 1

Material number: 4474.052.250

Picture: 447429822100

Material-assembly-group-no: 4474.298.221



MT-L 3085 II /
WHEEL HEAD

Kit
4474.298.221

