



Spare Parts Catalog

MT-L 3105 LKV

Material number: 4474.054.027

Current date: 04.04.2018

ZF Friedrichshafen AG
Hauptverwaltung
80038 Friedrichshafen
Deutschland

Telefon: +49 7541 77-0

Telefax: +49 7541 77-908000

www.zf.com

zuständiges Werk:
Passau

Notes relating to the spare parts catalog

Setup of the spare parts catalog

- Cover sheet
- Technical Cover (only in SDM print)
- Overview of figures
- Figure
- Associated parts list
- Next figure
- Associated parts list
- ...

Figure and parts list



Overview of figures

Bildtafel Figure	Sachnummer Product number	Benennung (Description)	Technische Info Technical info	Description (Benennung)	Menge Quantity	Einheit Unit
068.08.17	1316.170.001	AUSLEGER	WL	SHIFT TURRET	1	Stk
068.08.06	1316.170.031	DECKEL	WL*H-H *VM	COVER	1	Stk
068.08.14	1316.170.808	DECKEL	WL*AUSL+GEH*H-H*HF160N	COVER	1	Stk
08	1316.170.441	ANSCHLUSSTEILE	WL*NG-VORB*RG-SCHL*168N *BAJONETT	CONNECTING PARTS	1	Stk

The "gap" indicates that there is no separate graphics panel (poster) for this assembly
The parts of this assembly are shown with the same mid-section number on the figure

1 Positions and subpositions

Pos.	Sachnummer Product number	Benennung (Description)	Technische Info Technical info	Description (Benennung)	Menge Quantity	Einheit Unit
0370	1315.201.054	RUECKLAUFBOLZEN	KPL.16S151*SG*L= 79	REV.IDLER SHAFT	1	Stk
/0120	0631.329.293	SPANNSTIFT		SLOT. PIN	1	Stk

Positions marked with "/" are the individual items of a completion
For example: Position 0370 contains a centering pin with the position /0120

2 Combinations with standardized parts

Pos.	Sachnummer Product number	Benennung (Description)	Technische Info Technical info	Description (Benennung)	Menge Quantity	Einheit Unit
0630		VERSCHL.SCHR.		SCREW PLUG	1	Stk
	0636.302.067	VERSCHL.SCHR.		SCREW PLUG	1	Stk
	0634.801.249	DICHTRING	A 26 X 31	SEALING RING	1	Stk

The parts list shows the components included in the combination of standardized parts

3 Depiction of position/item number on the figure and in the parts list

01.620 - on the figure 01 relates to the assembly in which the position is included. Due to program-related reasons, it is shown on the figure.

0620 - in the parts list

Pos.	Sachnummer Product number	Benennung (Description)	Technische Info Technical info	Description (Benennung)	Menge Quantity	Einheit Unit
0620	0732.040.736	DRUCKFEDER		COMPRESSION SPRING	1	Stk

4 *-Positions

Positions marked with an * are optional i.e. inclusion in the parts list is not mandatory.
The following note is shown on the figure

je nach Stücklistenausführung
depending on spec. number
*
suivant la nomenclature
secondo la distinta base

5 Parts, dotted display

Parts with dotted display on the figure are only used for orientation of other parts

Technical Cover

Page 1 from 2

Material number: 4474.054.027



MT-L 3105 LKV /

Pos.	Information	Amendment number
	KUNDE:LIEBHERR-BISCHOFSHOFEN	
	IDENT-NR: 10028884	
	APPROVAL:	
	QUESTIONNAIRE:	
	PROJEKT-NR.:46684	
	VEHICLE DATA:	
	RADLADER L564/L574/L580	
	MOTOR: LIEBHERR D 926 TI	
	ENGINE POWER: P=195 KW IN N=2000 UPM	
	INPUT TORQUE: T= 809 NM IN N=1600 RPM	
	GETRIEBE: DANA 2+2	
	TYRES: SINGLE	
	REIFEN: 26.5-25 RL-2	
	RIM PITCH CIRCLE DIA: 425 MM	
	MAX.SPEED: 40,0 KM/H	
	PRODUCT DESCRIPTION:	
	MOUNTING POSITION:FRONT AXLE	
	RATIO TOTAL: I= 24,67	
	PLANETARY DRIVE: I=6,00 P4-360-75	
	BEVELGEAR SET: I= 4,11 T=37/9	
	MOUNTING: L=980/1220	
	FLANGE DISTANCE: L=2314	
	WHEEL TRUCK: L=2230	
	BRAKE:	
	MULTI-DISC BRAKE:HYDRAULIC 345X264	
	LINIG DISC: 6 LUMP	
	BREMSBERECHNUNG: 4474 716 119	
	DIFF.CARRIER:	
	TYP/GROESSE: LKV	
	SENS OF ROTATION:COUNTER CLOCKWISE	
	RING GEAR: SPIRAL DIRECTION LEFT	
	POSITION OF RING GEAR:RIGHT	
	FLANGE POS.BEVEL DRIVE: MIDDLE	

Technical Cover

Page 2 from 2

Material number: 4474.054.027



MT-L 3105 LKV /

Pos.	Information	Amendment number
	FLANSCH DIN180 *LZ=10 *D=16,1	
	LIMITED-SLIP DIFFERENTIAL	
	TYPE: DL 2400	
	BEVEL SIDE GEAR SPLINE: N 55X1,25	
	INTERLOCK VALUE: 45 PER CENT (%)	
	DRAWINGS:	
	SECTIONAL: 4474 054 005 (0)	
	EINBAU: 4474 654 015(0)	
	TEST INSTRUCT.: 4474 760 004 (3)	
	INSPECTION INSTRUCTION: 4474 760 005 (2)	
	AUTOMATIC BRAKE ADJUSTING DEVICE	
	AXIAL PLAY SUN 0,5 - 2,0 MM	
	COVER MOUNTING FACE OF RIM WITHOUT PAINT AND PROTECTED	
	AGAINST CORROSION	
	OIL CAPACITY:	
	TOTAL: CA. 51,00 L	
	OIL FILLING: YES	
	OIL SPECIFICATION:SAE 90 LS SPEZ.MIL-L 2105 D	
	BRAKE CONTROL: ATF-OIL/MOTOROIL 10 W	
	GESAMT-TROCKENMASSE: 1130KG	
	FARBE: LIEBHERRGELB	
	PACKING:	
	KEINE INTERNE OELKUEHLUNG NOTWENDIG	
	QUANTITY OF LINED DISCS IN TYPE PLATE PUNCH MARK	
	*	

Assembly group overview

Page 1 from 1

Material number: 4474.054.027



MT-L 3105 LKV /

Graphics	Pos.	Material number	Name	Quantity	Amend. no.	Techn. Info.
4460026034 01	10	4460.026.034	LKV	1		
4474145045 00	20	4474.145.045	AXLE CASING	1		
4474145440 50	30	4474.145.440	AXLE CASING	1		
4474146082 00	40	4474.146.082	OUTPUT	2		
4474147010 00	60	4474.147.010	BRAKE	2		
4143139003 00	80	4143.139.003	TYPE PLATE	1		

Plant

Page 1 from 4

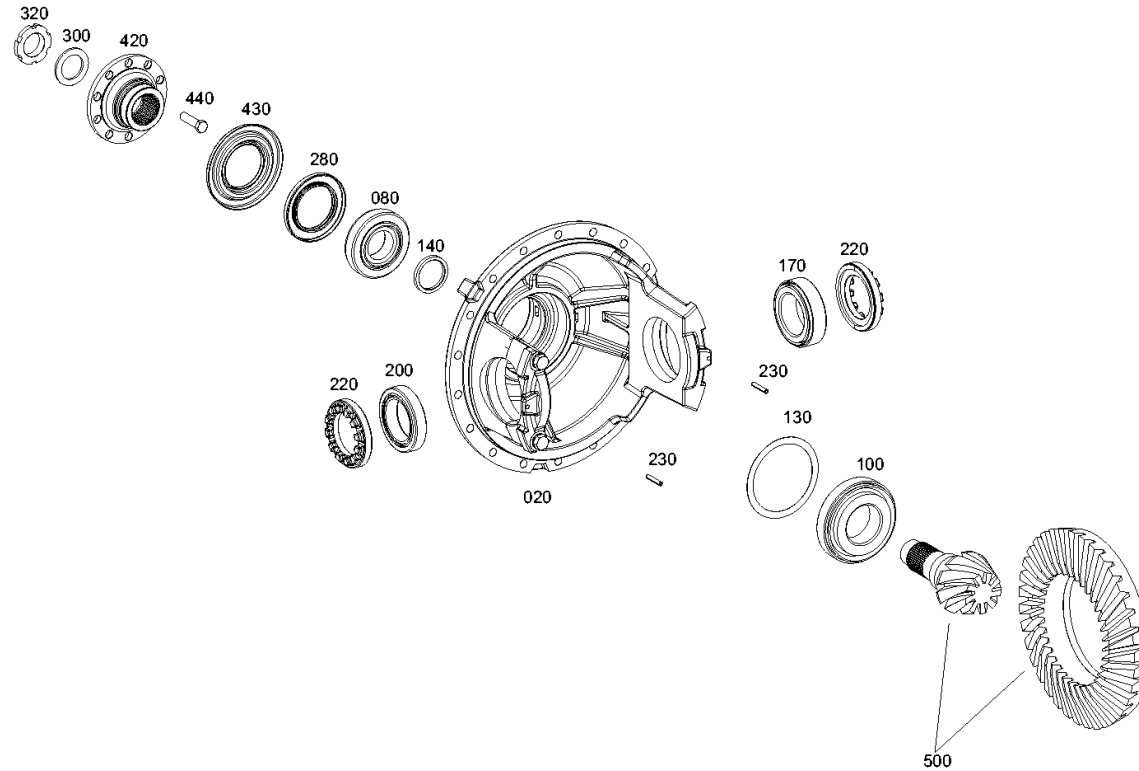
Material number: 4474.054.027

Plant: 446002603401

Material-assembly-group-no: 4460.026.034



MT-L 3105 LKV /
LKV



Plant

Page 2 from 4

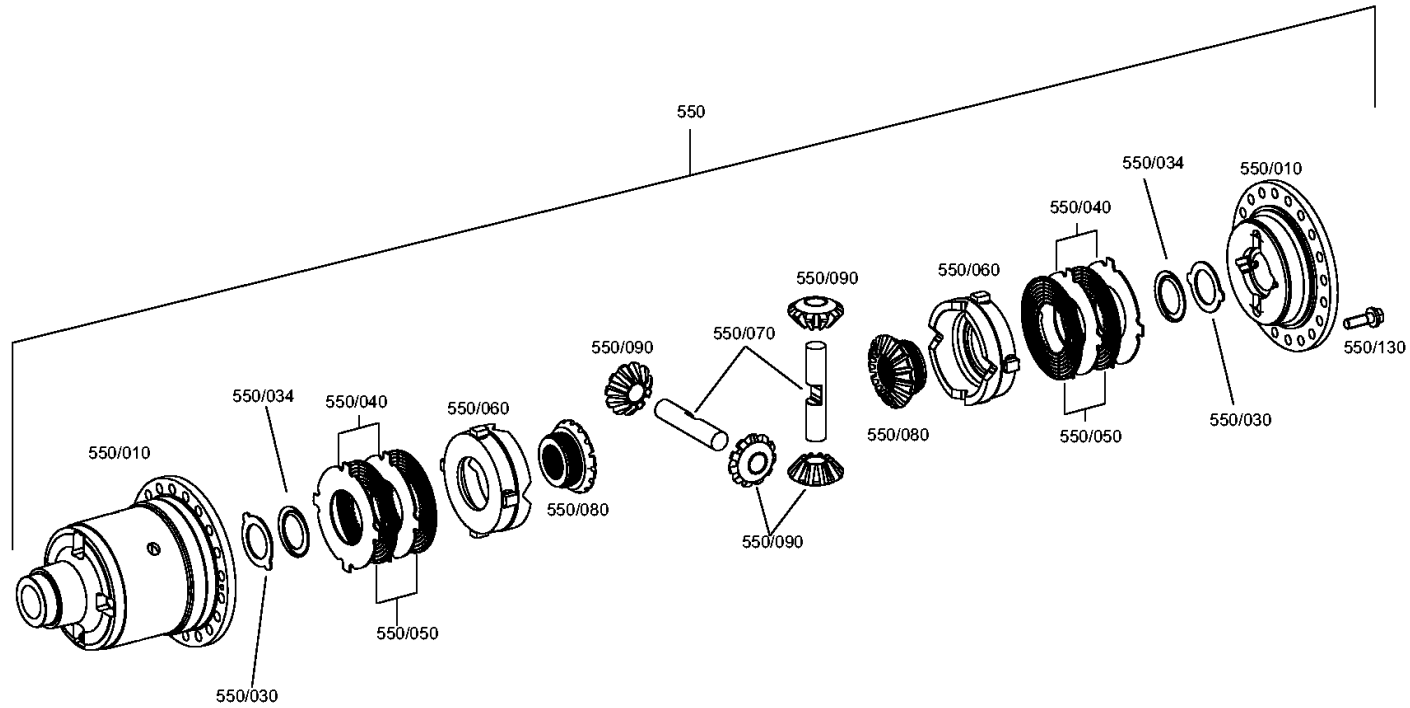
Material number: 4474.054.027

Plant: 446002603402

Material-assembly-group-no: 4460.026.034



MT-L 3105 LKV /
LKV



Plant

Page 3 from 4

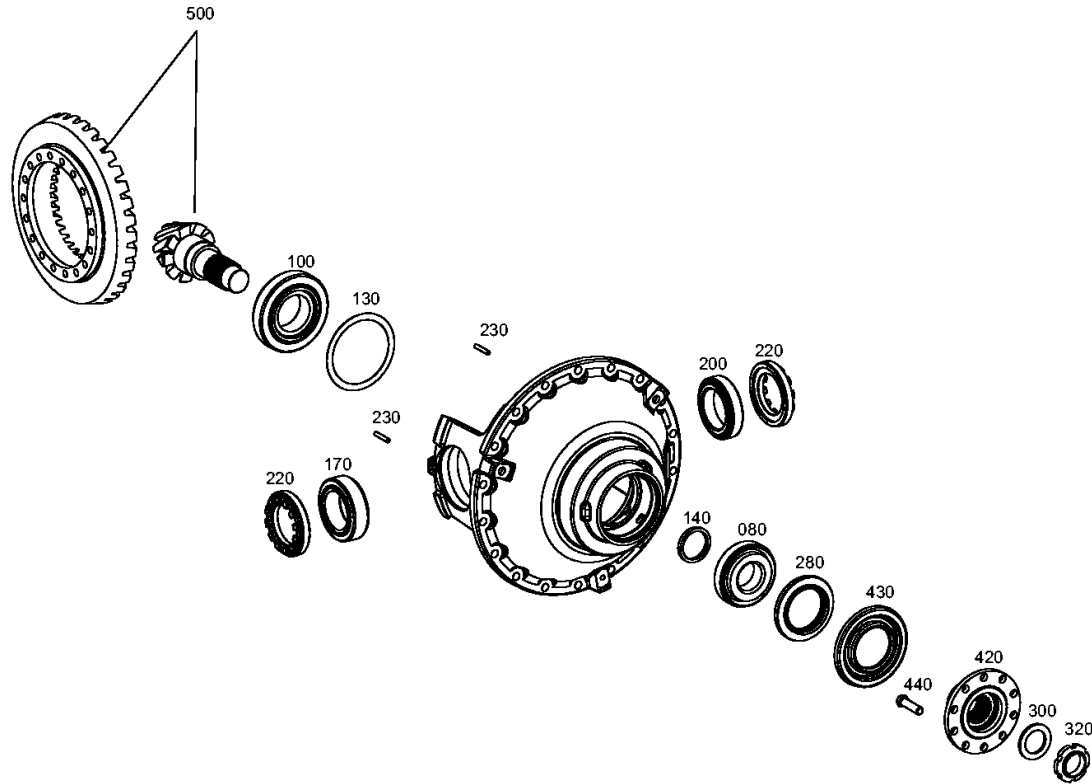
Material number: 4474.054.027

Plant: 446002603451

Material-assembly-group-no: 4460.026.034



MT-L 3105 LKV /
LKV



Plant

Page 4 from 4

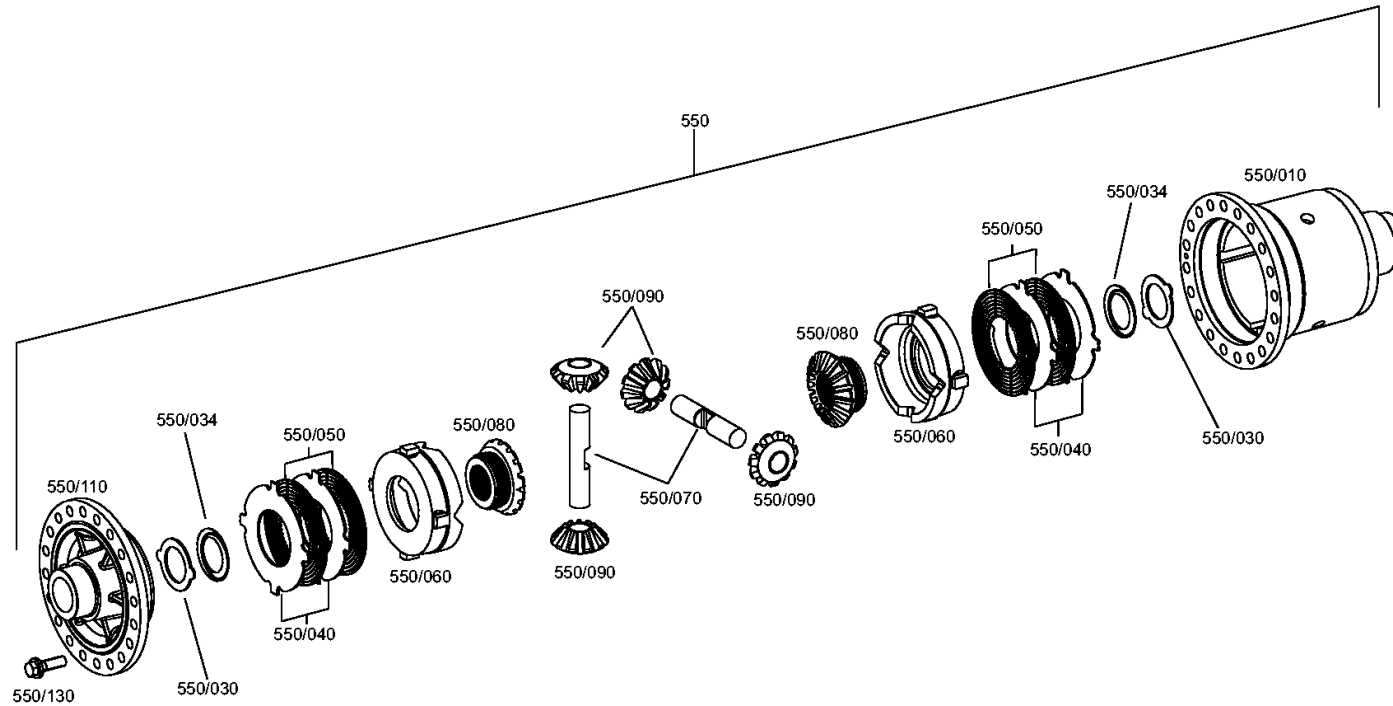
Material number: 4474.054.027

Plant: 446002603452

Material-assembly-group-no: 4460.026.034



MT-L 3105 LKV /
LKV



Plant

Page 1 from 1

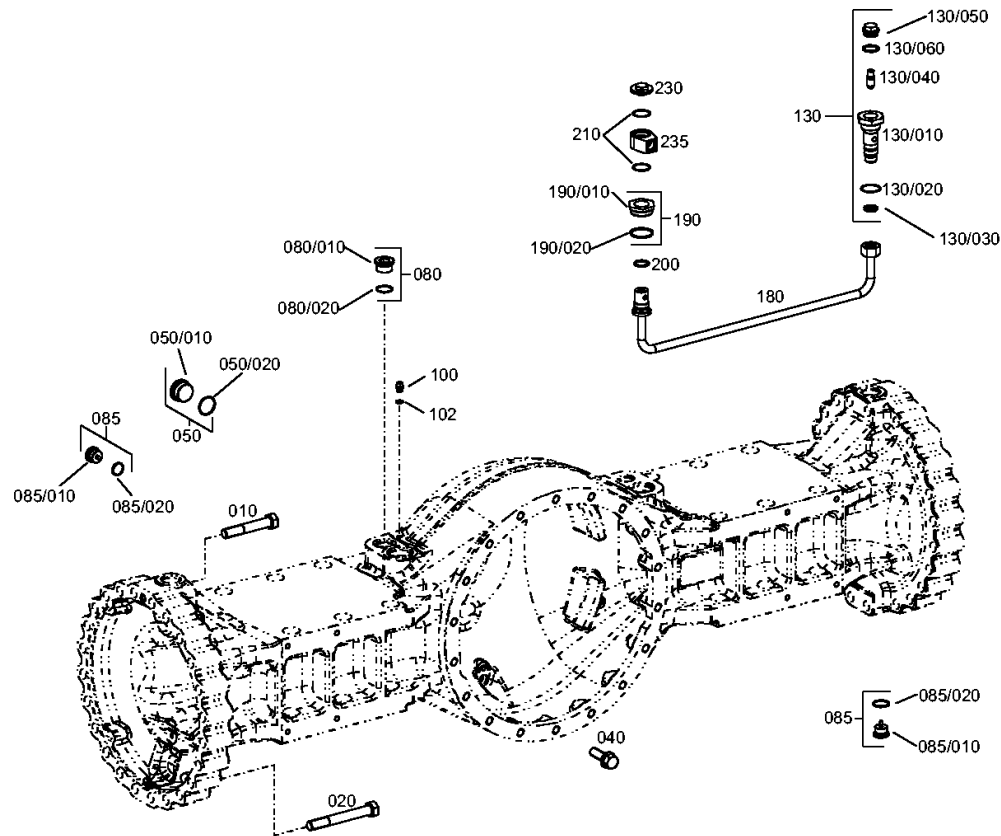
Material number: 4474.054.027

Plant: 447414504500

Material-assembly-group-no: 4474.145.045



MT-L 3105 LKV /
AXLE CASING



Plant

Page 1 from 1

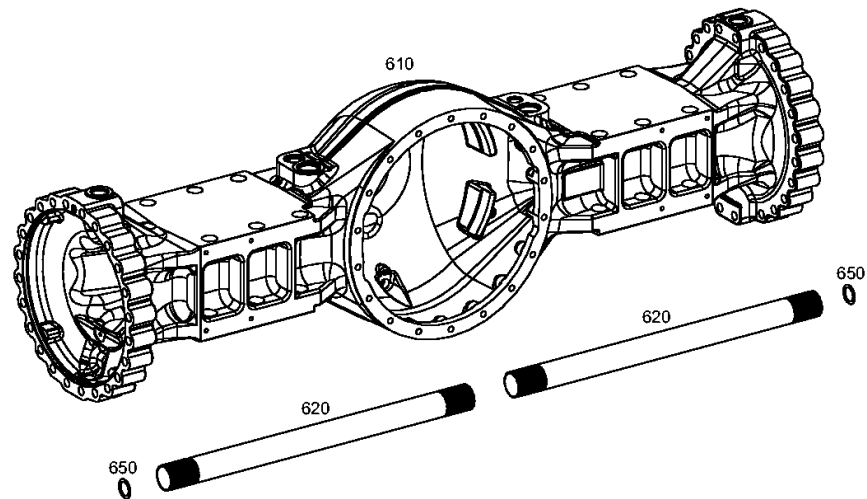
Material number: 4474.054.027

Plant: 447414544050

Material-assembly-group-no: 4474.145.440



MT-L 3105 LKV /
AXLE CASING



Plant

Page 1 from 1

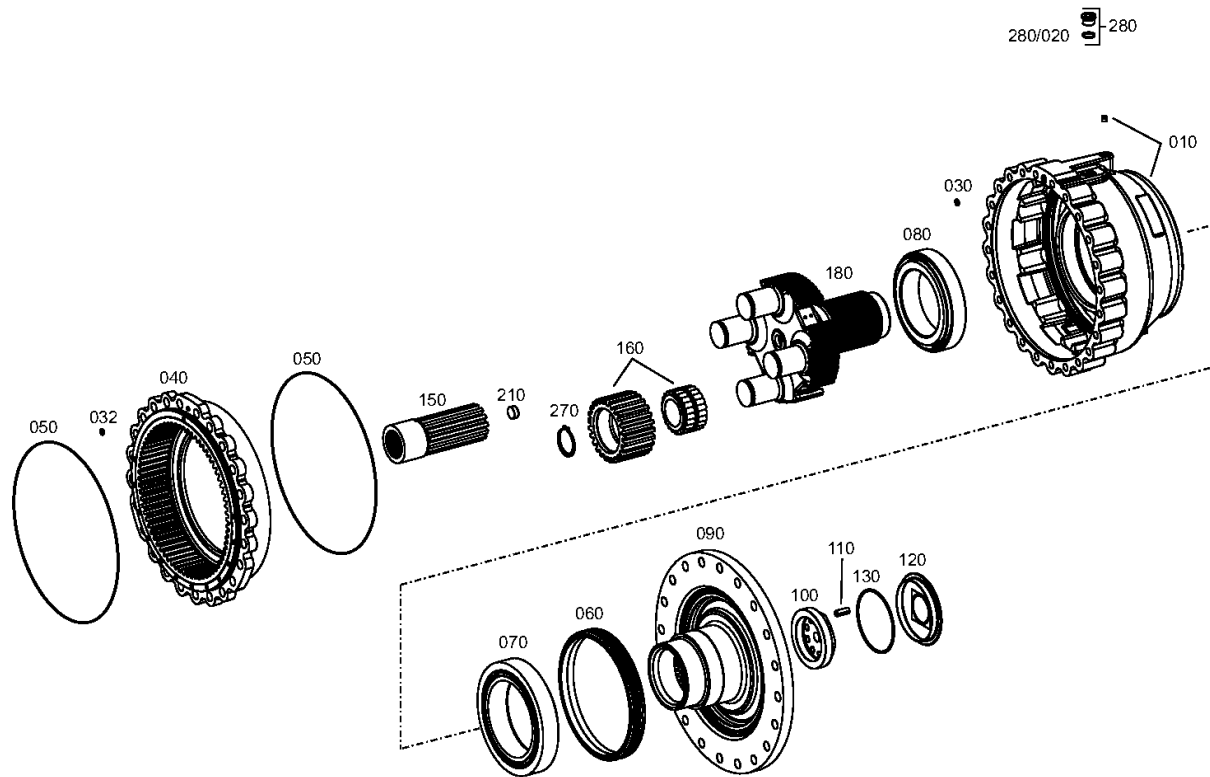
Material number: 4474.054.027

Plant: 447414608200

Material-assembly-group-no: 4474.146.082



MT-L 3105 LKV /
OUTPUT



rechts/links
right/left
destra/sinistra
droite/gauche
derecho/izquierdo

Plant

Page 1 from 1

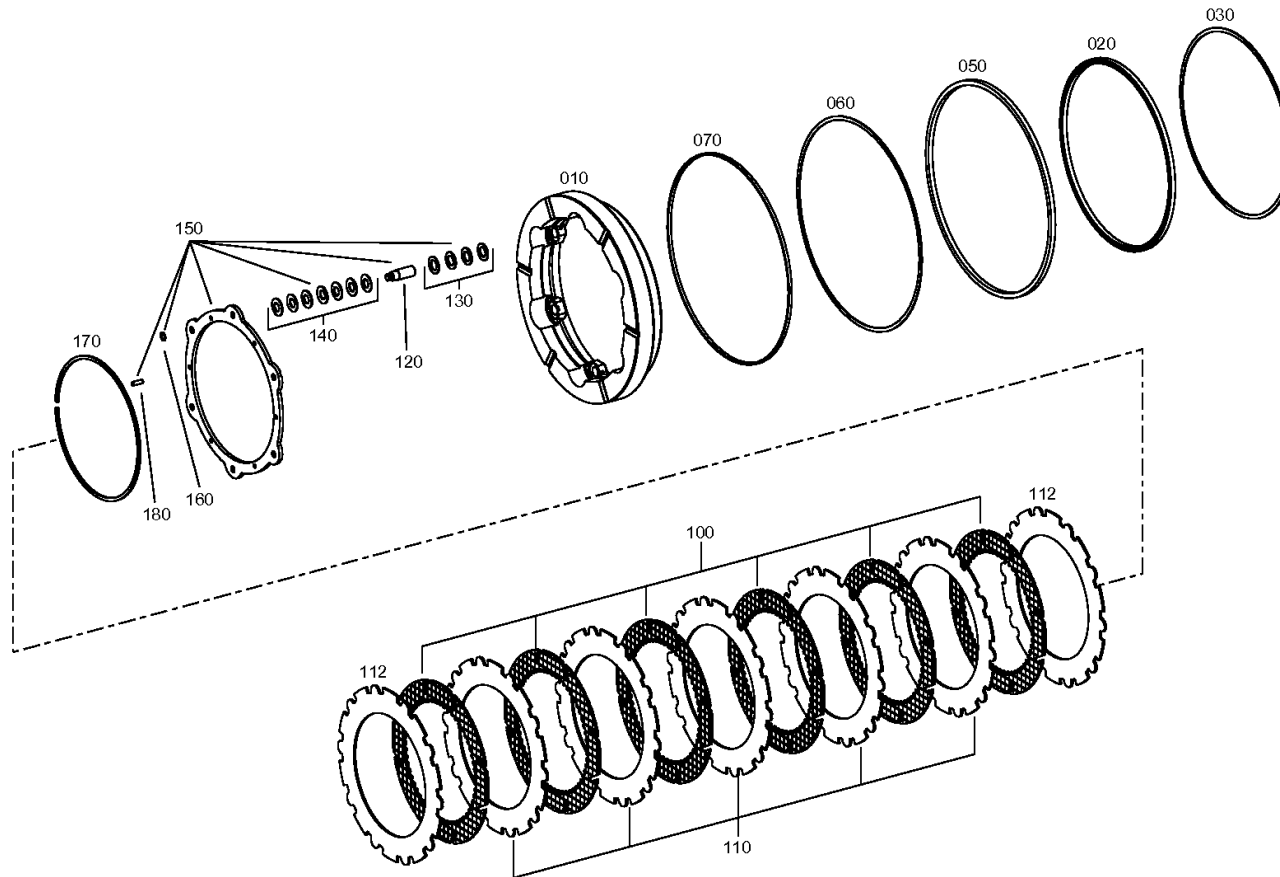
Material number: 4474.054.027

Plant: 447414701000

Material-assembly-group-no: 4474.147.010



MT-L 3105 LKV /
BRAKE



Plant

Page 1 from 1

Material number: 4474.054.027

Plant: 414313900300

Material-assembly-group-no: 4143.139.003



MT-L 3105 LKV /
TYPE PLATE

