



Spare Parts Catalog

MT-L 3105 II

Material number: 4474.054.276

Current date: 25.04.2023

ZF Friedrichshafen AG
Hauptverwaltung
80038 Friedrichshafen
Deutschland

Telefon: +49 7541 77-0

Telefax: +49 7541 77-908000

www.zf.com

zuständiges Werk:
Passau

Notes relating to the spare parts catalog

Setup of the spare parts catalog

- Cover sheet
- Technical Cover (only in SDM print)
- Overview of figures
- Figure
- Associated parts list
- Next figure
- Associated parts list
- ...

Figure and parts list



Overview of figures

Bildtafel Figure	Sachnummer Product number	Benennung (Description)	Technische Info Technical info	Description (Benennung)	Menge Quantity	Einheit Unit
068.08.17	1316.170.001	AUSLEGER	WL	SHIFT TURRET	1	Stk
068.08.06	1316.170.031	DECKEL	WL*H-H *VM	COVER	1	Stk
068.08.14	1316.170.808	DECKEL	WL*AUSL+GEH*H-H*HF160N	COVER	1	Stk
08	1316.170.441	ANSCHLUSSTEILE	WL*NG-VORB*RG-SCHL*168N *BAJONETT	CONNECTING PARTS	1	Stk

The "gap" indicates that there is no separate graphics panel (poster) for this assembly
The parts of this assembly are shown with the same mid-section number on the figure

1 Positions and subpositions

Pos.	Sachnummer Product number	Benennung (Description)	Technische Info Technical info	Description (Benennung)	Menge Quantity	Einheit Unit
0370	1315.201.054	RUECKLAUFBOLZEN	KPL.16S151*SG*L= 79	REV.IDLER SHAFT	1	Stk
/0120	0631.329.293	SPANNSTIFT		SLOT. PIN	1	Stk

Positions marked with "/" are the individual items of a completion
For example: Position 0370 contains a centering pin with the position /0120

2 Combinations with standardized parts

Pos.	Sachnummer Product number	Benennung (Description)	Technische Info Technical info	Description (Benennung)	Menge Quantity	Einheit Unit
0630		VERSCHL.SCHR.		SCREW PLUG	1	Stk
	0636.302.067	VERSCHL.SCHR.		SCREW PLUG	1	Stk
	0634.801.249	DICHTRING	A 26 X 31	SEALING RING	1	Stk

The parts list shows the components included in the combination of standardized parts

3 Depiction of position/item number on the figure and in the parts list

01.620 - on the figure 01 relates to the assembly in which the position is included. Due to program-related reasons, it is shown on the figure.

0620 - in the parts list

Pos.	Sachnummer Product number	Benennung (Description)	Technische Info Technical info	Description (Benennung)	Menge Quantity	Einheit Unit
0620	0732.040.736	DRUCKFEDER		COMPRESSION SPRING	1	Stk

4 *-Positions

Positions marked with an * are optional i.e. inclusion in the parts list is not mandatory.
The following note is shown on the figure

je nach Stücklistenausführung
depending on spec. number
*
suivant la nomenclature
secondo la distinta base

5 Parts, dotted display

Parts with dotted display on the figure are only used for orientation of other parts

Technical Cover

Page 1 from 2

Material number: 4474.054.276



MT-L 3105 II /

Pos.	Information	Amendment number
	CUSTOMER: TECHSTROJMASH	
	VEHICLE DESIGNATION: TCM PK-6	
	TYRE RADIUS DYN.: 0,830 M	
	MAX. SPEED: 30,00 KM/H	
	TRACK WIDTH: 2.314 MM	
	PRODUCT DESCRIPTION: ZF- MULTITRAC-AXLE	
	VEHICLE TYPE: WHEEL LOADER	
	AXLE TYPE: MT-L 3105 II	
	VERSION: RIGID	
	AXLE ARRANGEMENT: REAR AXLE	
	DIRECTION OF ROTATION: CCW	
	CROWN WHEEL POSITION: LEFT	
	SPIRAL DIRECTION: LEFT	
	INPUT FLANGE: MECH 8,5 C	
	FLANGE TO FLANGE DIM.: 2.314 MM	
	AXLE INSTALLATION: CENTER TRUNNION W/O BRACKETS	
	MOUNTING DIMENSIONS: WITHOUT MACHINING	
	BRAKE TUBE: INTERNAL	
	MAIN DIFFERENTIAL: LIMITED-SLIP DIFFERENTIAL	
	DIFFERENTIAL TYPE/SIZE: DL-2400/LKV	
	LOCKING RATIO: 30%	
	AXLE RATIO: 24,666	
	PLANETARY DRIVE: P4, I=6,0	
	SEALING TYPE OF SHAFT SEAL: METAL FACE SEAL	
	BRAKE : SERVICE BRAKE	
	SERVICE BRAKE : 2X MULTI-DISC BRAKE 345X264X7	
	MULTI-DISC BRAKE: SINTER-LINED CLUTCH DISC	
	PISTON SEAL: STANDARD	
	BRAKE PORT SIZE: M18 X 1,5 VERTIKAL	
	RIM PITCH CIRCLE DIAM.: 425,00 MM	
	WHEEL CONNECTION: THREAD 20 X M22 X 1,5	
	WHEEL NUTS: WITHOUT	
	OIL FILLING AXLE DRIVE: WITH	



Pos.	Information	Amendment number
	OIL FILLER: ON THE SIDE	
	AXLE OIL COOLING: EXTERN	
	OIL - GRADE AXLE DRIVE: TE ML 05 (TITAN POWERFLUID)	
	OIL - GRADE ALLOWED: TE ML 05 E/F/G	
	PRIMER PAINT: YELLOW RAL 1006	
	PAINT-FREE AREA: INPUT FLANGE	
	TYPE PLATE	
	TYPE PLATE: ZF- STANDARD	
	AXLE BREATHER: WITHOUT	
	SEPARATE ORDER CUSTOMER: 0732.612.001 BREATHER STANDARD	
	4474.353.063 WHEEL SCREW L=42	
	4474.353.064 WHEEL SCREW L=50	
	4468.261.012 BREATHER DUST	
	OIL FILL QUANTITY CA: 42,00 L	
	DOCUMENTATION:	
	SECTION DRAWING: 4474.054.216	
	INSTALLATION DRAWING: 4474 654 263	
	INSTALLATION INSTRUCTION: 4474.700.088	
	INSTRUCTION DIFFERENTIAL: 4474.760.005	
	TESTING INSTRUCTION: 4474_760_009	
	ASSEMBLY INSTRUCTION OUTPUT: 4474.700.118	
	ASSEMBLY INSTRUCTION: 4474.700.102	
	BRAKE CALCULATION: 4474 716 255	

Assembly group overview

Page 1 from 1

Material number: 4474.054.276



MT-L 3105 II /

Picture	Pos.	Material number	Name	Quantity	Amend. no.	Techn. Info.
447415305600	60	4474.153.056	AXLE DRIVE HOUSING	1		
447415406600	10	4474.154.066	INPUT	1		
446012506600	20	4460.125.066	INPUT FLANGE	1		
448117105900	30	4481.171.059	LIMIT.SLIP DIFF	1		
447415504300	70	4474.155.043	AXLE CASING	1		
447415603300	130	4474.156.033	OUTPUT	1		
447415702300	40	4474.157.023	BRAKE	1		
447415504300	80	4474.155.043	AXLE CASING	1		
447415603300	140	4474.156.033	OUTPUT	1		
447415702300	50	4474.157.023	BRAKE	1		
447415807550	160	4474.158.075	AXLE PARTS	1		
414313900100	900	4143.139.001	TYPE PLATE	1		
447429822600	KIT	4474.298.226	OUTPUT	1		

Picture

Page 1 from 1

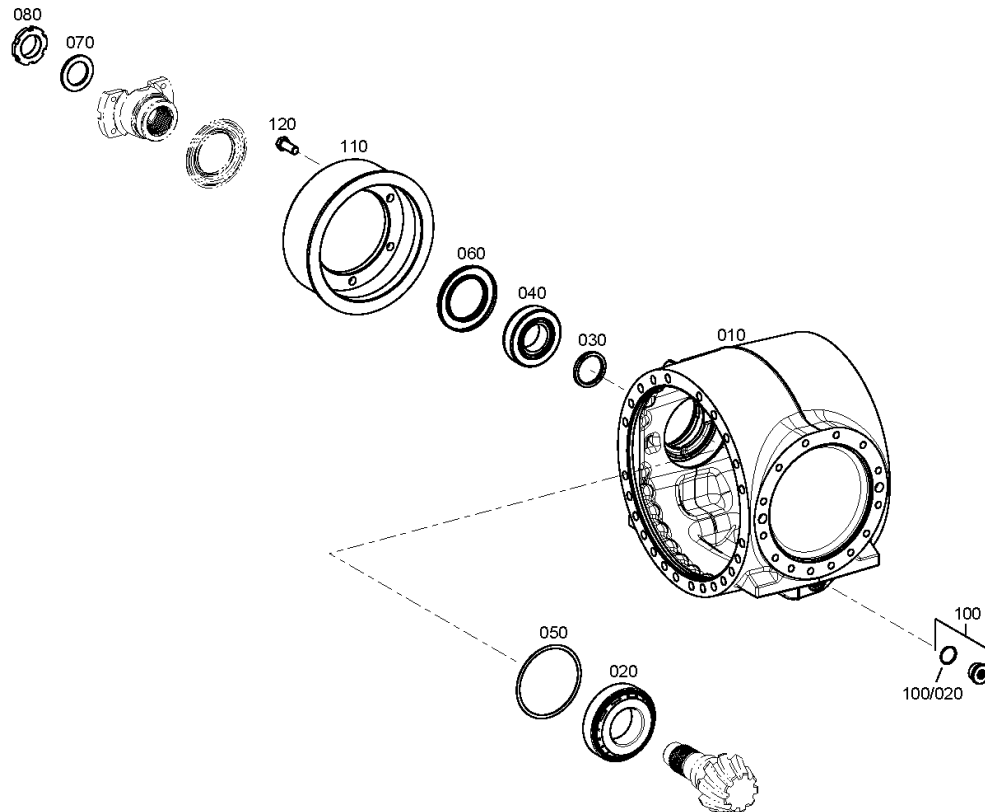
Material number: 4474.054.276

Picture: 447415305600

Material-assembly-group-no: 4474.153.056



MT-L 3105 II /
AXLE DRIVE HOUSING



Picture

Page 1 from 1

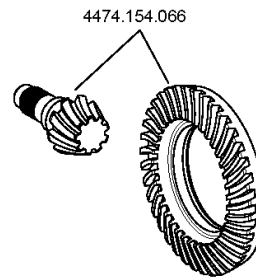
Material number: 4474.054.276

Picture: 447415406600

Material-assembly-group-no: 4474.154.066



MT-L 3105 II /
INPUT



Picture

Page 1 from 1

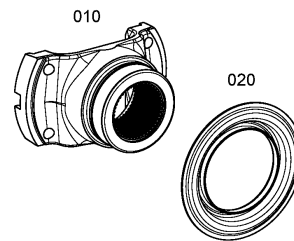
Material number: 4474.054.276

Picture: 446012506600

Material-assembly-group-no: 4460.125.066



MT-L 3105 II /
INPUT FLANGE



Picture

Page 1 from 1

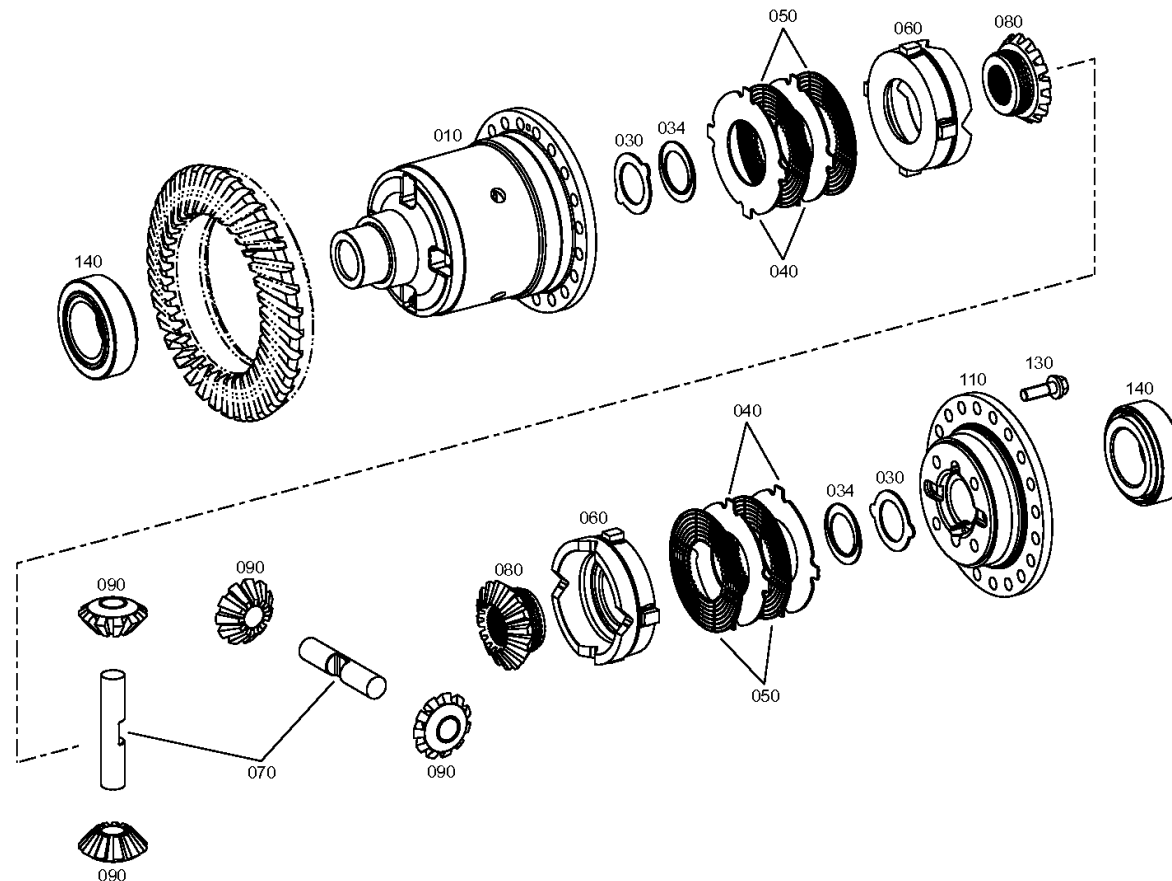
Material number: 4474.054.276

Picture: 448117105900

Material-assembly-group-no: 4481.171.059



MT-L 3105 II /
LIMIT.SLIP DIFF



Picture

Page 1 from 1

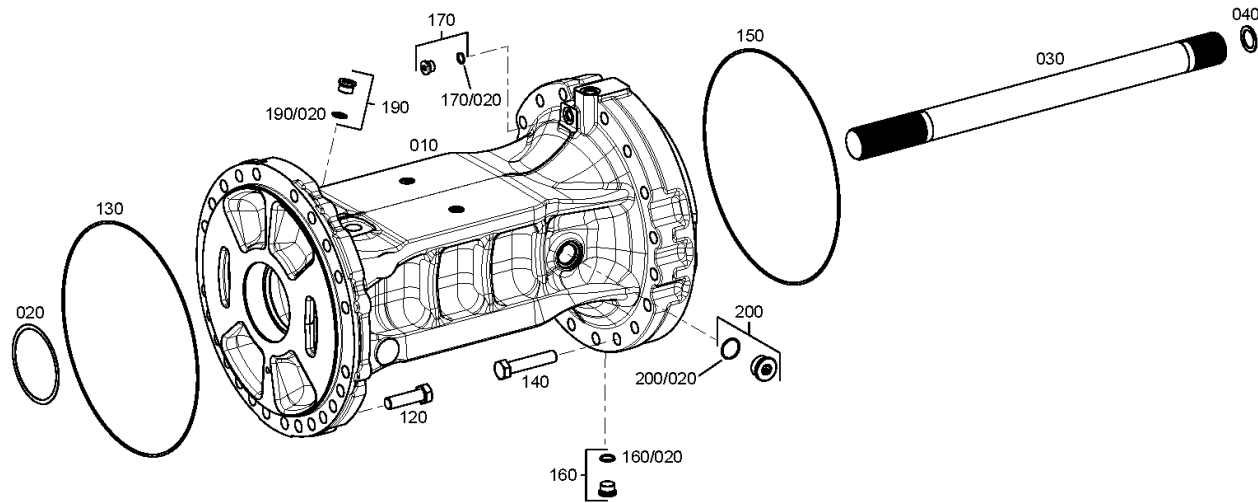
Material number: 4474.054.276

Picture: 447415504300

Material-assembly-group-no: 4474.155.043



MT-L 3105 II /
AXLE CASING



Picture

Page 1 from 1

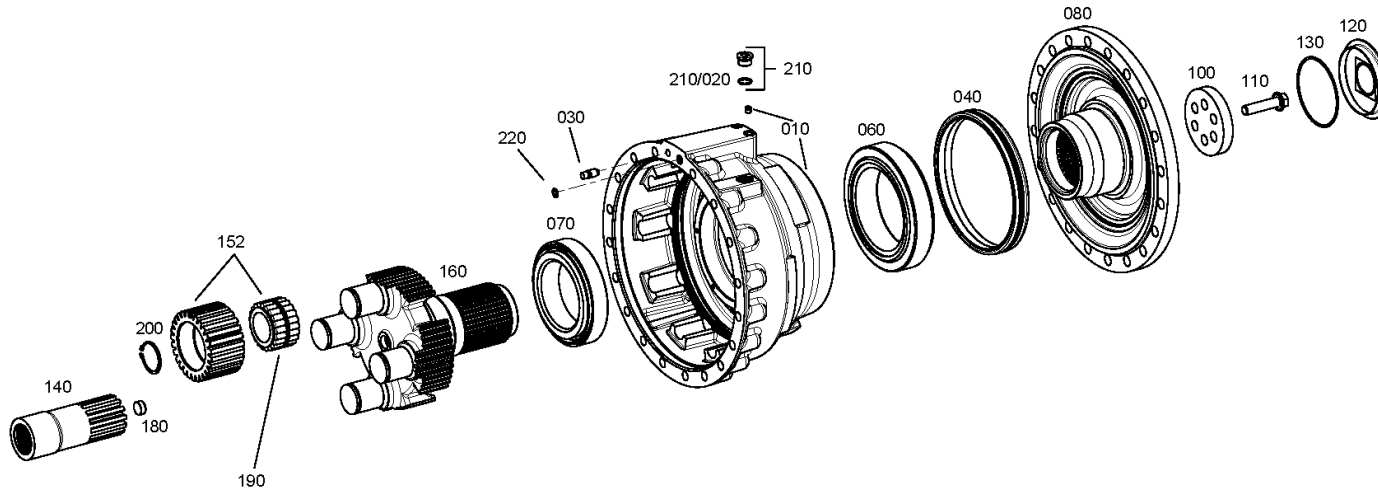
Material number: 4474.054.276

Picture: 447415603300

Material-assembly-group-no: 4474.156.033



MT-L 3105 II /
OUTPUT



Picture

Page 1 from 1

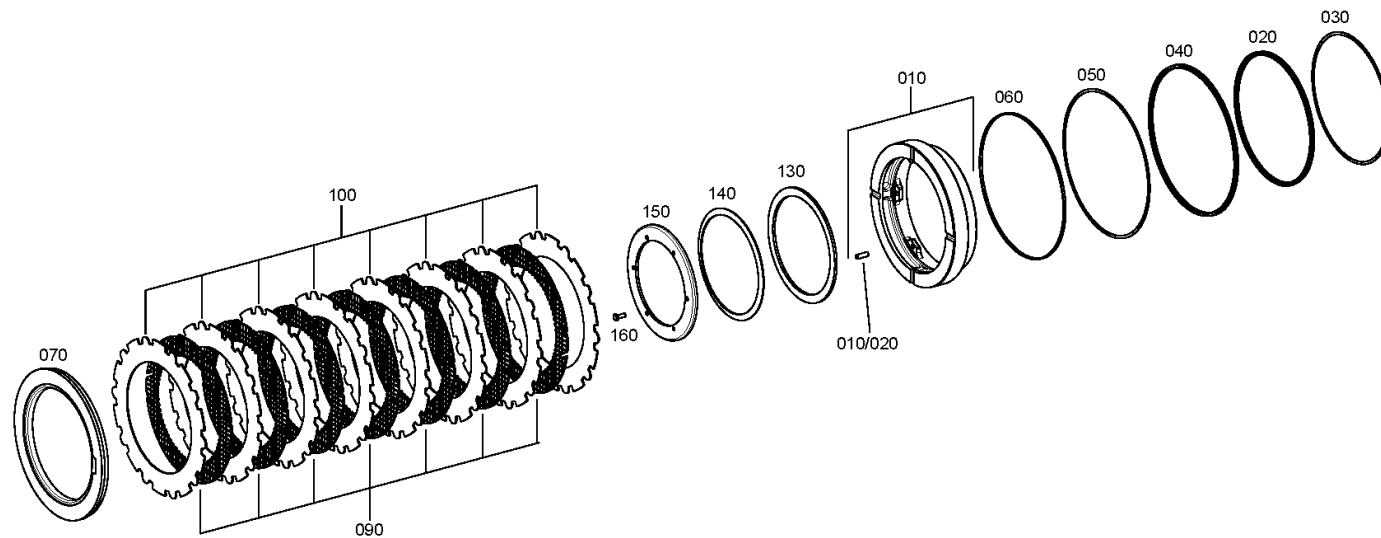
Material number: 4474.054.276

Picture: 447415702300

Material-assembly-group-no: 4474.157.023



MT-L 3105 II /
BRAKE



rechts/links
right/left
destra/sinistra
droite/gauche
derecho/izquierdo

Picture

Page 1 from 1

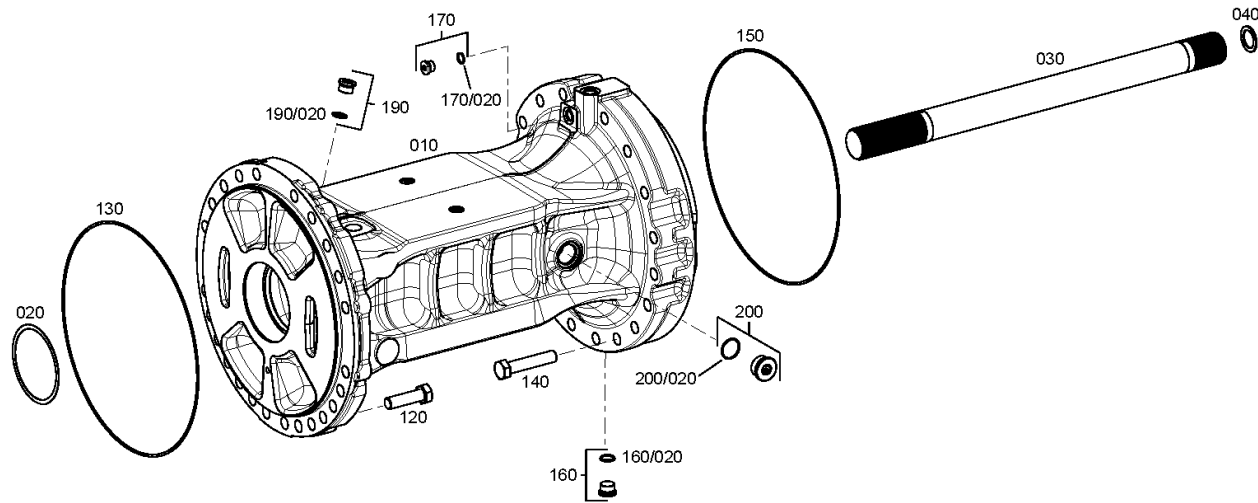
Material number: 4474.054.276

Picture: 447415504300

Material-assembly-group-no: 4474.155.043



MT-L 3105 II /
AXLE CASING



Picture

Page 1 from 1

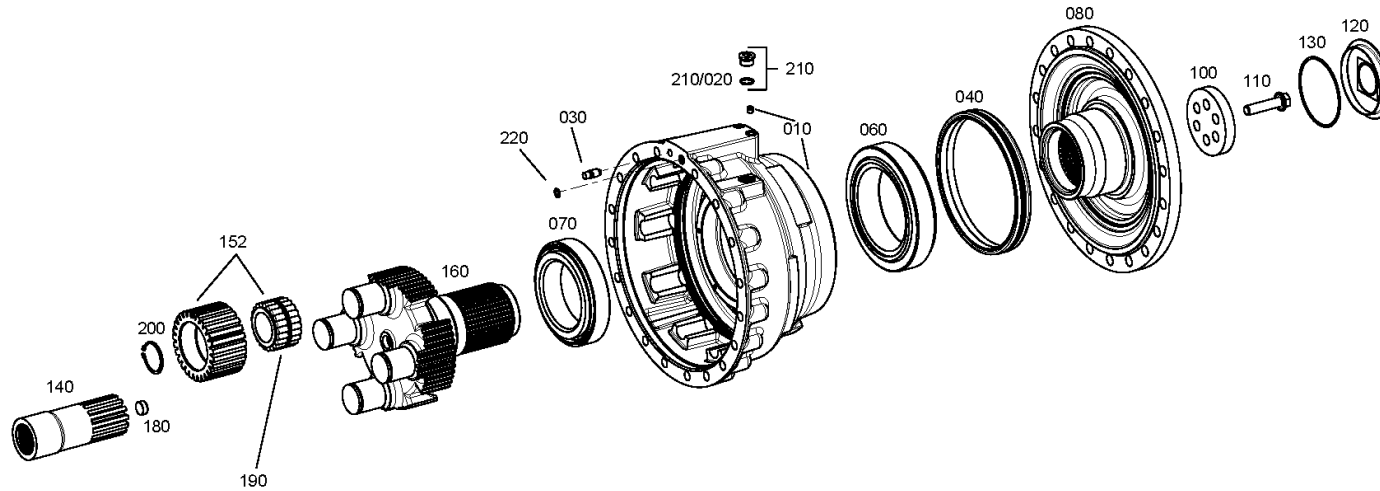
Material number: 4474.054.276

Picture: 447415603300

Material-assembly-group-no: 4474.156.033



MT-L 3105 II /
OUTPUT



Picture

Page 1 from 1

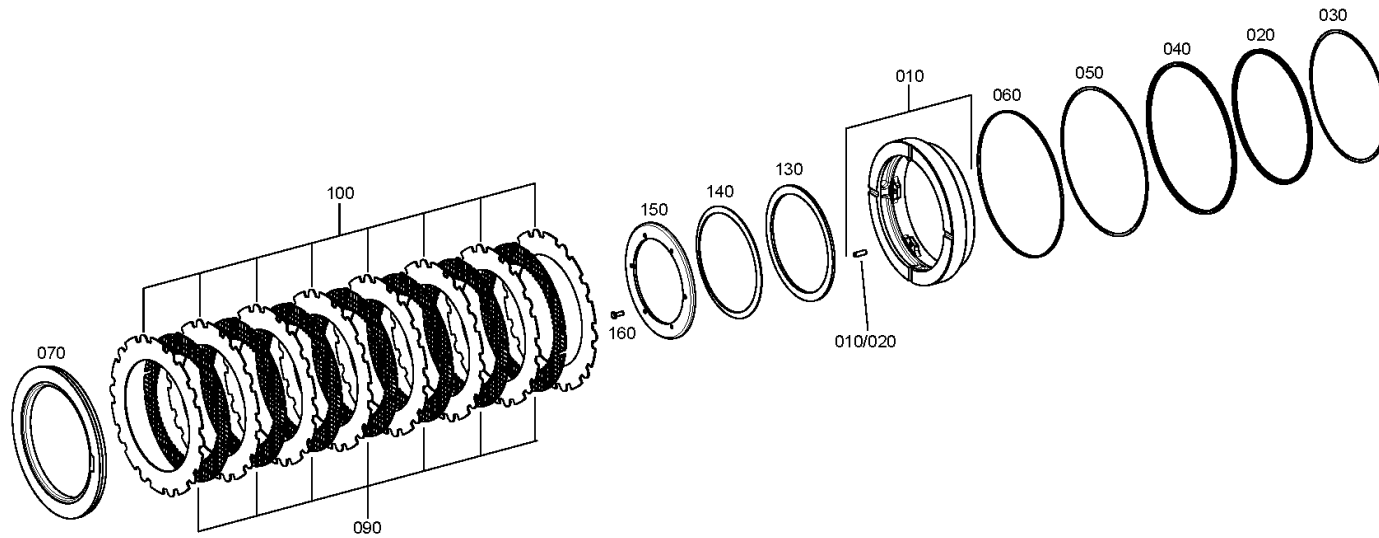
Material number: 4474.054.276

Picture: 447415702300

Material-assembly-group-no: 4474.157.023



MT-L 3105 II /
BRAKE



rechts/links
right/left
destra/sinistra
droite/gauche
derecho/izquierdo

Picture

Page 1 from 1

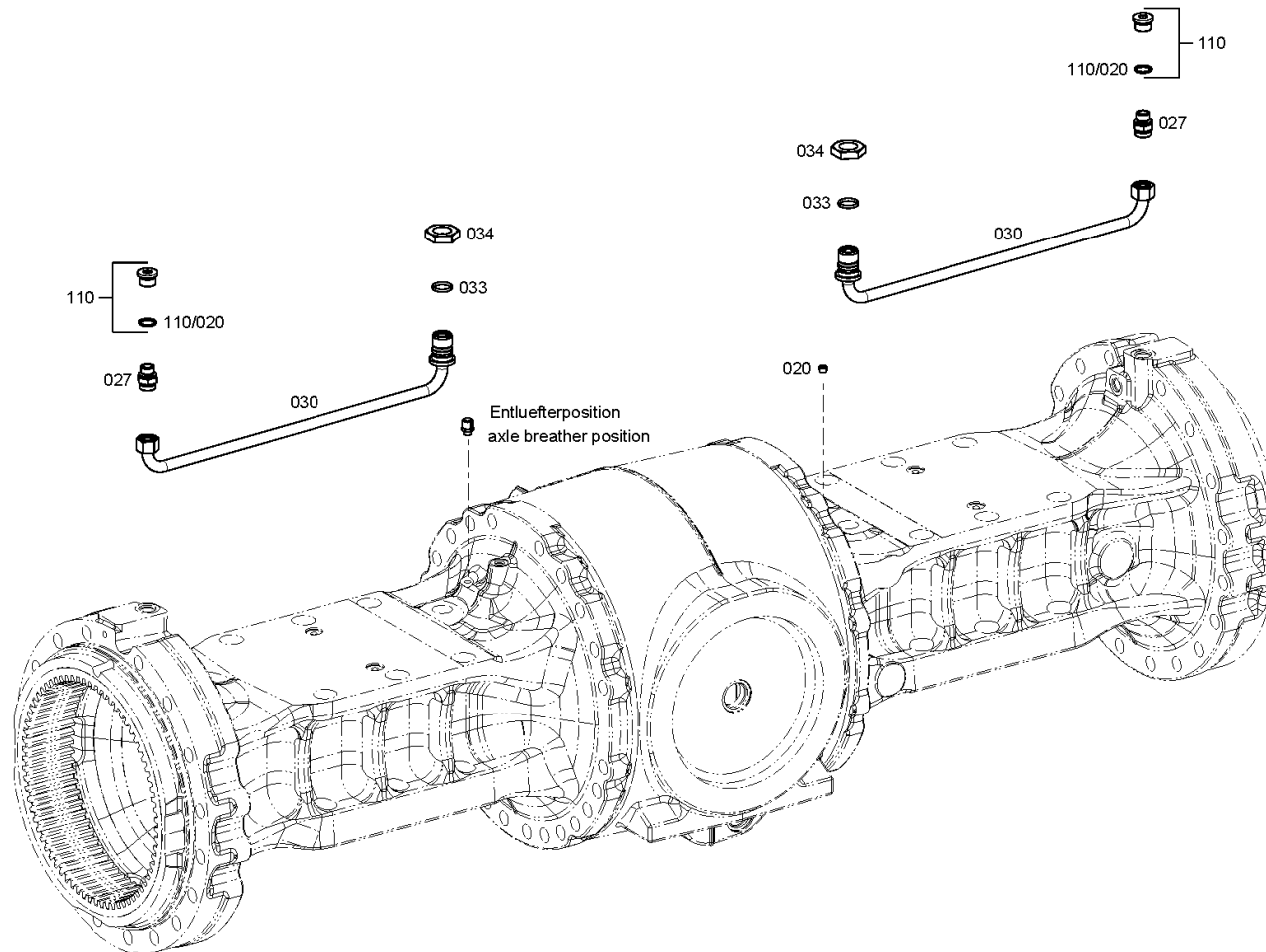
Material number: 4474.054.276

Picture: 447415807550

Material-assembly-group-no: 4474.158.075



MT-L 3105 II /
AXLE PARTS



Picture

Page 1 from 1

Material number: 4474.054.276

Picture: 414313900100

Material-assembly-group-no: 4143.139.001



MT-L 3105 II /
TYPE PLATE



010

Picture

Page 1 from 1

Material number: 4474.054.276

Picture: 447429822600

Material-assembly-group-no: 4474.298.226



MT-L 3105 II /
OUTPUT

Kit
4474 298 226

