



Spare Parts Catalog

MT-L 3115 II

Material number: 4474.055.034

Current date: 19.10.2022

ZF Friedrichshafen AG
Hauptverwaltung
80038 Friedrichshafen
Deutschland

Telefon: +49 7541 77-0

Telefax: +49 7541 77-908000

www.zf.com

zuständiges Werk:
Passau

Notes relating to the spare parts catalog

Setup of the spare parts catalog

- Cover sheet
- Technical Cover (only in SDM print)
- Overview of figures
- Figure
- Associated parts list
- Next figure
- Associated parts list
- ...

Figure and parts list



Overview of figures

Bildtafel Figure	Sachnummer Product number	Benennung (Description)	Technische Info Technical info	Description (Benennung)	Menge Quantity	Einheit Unit
068.08.17	1316.170.001	AUSLEGER	WL	SHIFT TURRET	1	Stk
068.08.06	1316.170.031	DECKEL	WL*H-H *VM	COVER	1	Stk
068.08.14	1316.170.808	DECKEL	WL*AUSL+GEH*H-H*HF160N	COVER	1	Stk
08	1316.170.441	ANSCHLUSSTEILE	WL*NG-VORB*RG-SCHL*168N *BAJONETT	CONNECTING PARTS	1	Stk

The "gap" indicates that there is no separate graphics panel (poster) for this assembly
The parts of this assembly are shown with the same mid-section number on the figure

1 Positions and subpositions

Pos.	Sachnummer Product number	Benennung (Description)	Technische Info Technical info	Description (Benennung)	Menge Quantity	Einheit Unit
0370	1315.201.054	RUECKLAUFBOLZEN	KPL.16S151*SG*L= 79	REV.IDLER SHAFT	1	Stk
/0120	0631.329.293	SPANNSTIFT		SLOT. PIN	1	Stk

Positions marked with "/" are the individual items of a completion
For example: Position 0370 contains a centering pin with the position /0120

2 Combinations with standardized parts

Pos.	Sachnummer Product number	Benennung (Description)	Technische Info Technical info	Description (Benennung)	Menge Quantity	Einheit Unit
0630		VERSCHL.SCHR.		SCREW PLUG	1	Stk
	0636.302.067	VERSCHL.SCHR.		SCREW PLUG	1	Stk
	0634.801.249	DICHTRING	A 26 X 31	SEALING RING	1	Stk

The parts list shows the components included in the combination of standardized parts

3 Depiction of position/item number on the figure and in the parts list

01.620 - on the figure 01 relates to the assembly in which the position is included. Due to program-related reasons, it is shown on the figure.

0620 - in the parts list

Pos.	Sachnummer Product number	Benennung (Description)	Technische Info Technical info	Description (Benennung)	Menge Quantity	Einheit Unit
0620	0732.040.736	DRUCKFEDER		COMPRESSION SPRING	1	Stk

4 *-Positions

Positions marked with an * are optional i.e. inclusion in the parts list is not mandatory.
The following note is shown on the figure

je nach Stücklistenausführung
depending on spec. number
*
suivant la nomenclature
secondo la distinta base

5 Parts, dotted display

Parts with dotted display on the figure are only used for orientation of other parts

Technical Cover

Page 1 from 2

Material number: 4474.055.034



MT-L 3115 II /

Pos.	Information	Amendment number
	VEHICLE DATA: -----	
	CUSTOMER: GUANGXI LIUGONG MACHINERY	
	VEHICLE DESIGNATION: CLG888III	
	TYRE SIZE: 29.5 R25L4	
	TYRE RADIUS DYN.: 0,840 M	
	MAX. SPEED: 40 KM/H	
	TRACK WIDTH: 2.450 MM	
	PRODUCT DESCRIPTION: ZF- MULTITRAC-AXLE	
	VEHICLE TYPE: WHEEL LOADER	
	AXLE TYPE: MT-L 3115 II	
	VERSION: RIGID	
	AXLE ARRANGEMENT: REAR AXLE	
	DIRECTION OF ROTATION:CCW	
	CROWN WHEEL POSITION: LEFT	
	SPIRAL DIRECTION: LEFT	
	INPUT FLANGE: MECH 8,5 C	
	FLANGE TO FLANGE DIM.:2.600 MM	
	AXLE INSTALLATION: CENTER TRUNNION W/O BRACKETS	
	MOUNTING DIMENSIONS: WITHOUT MACHINING	
	BRAKE TUBE: INTERNAL	
	MAIN DIFFERENTIAL: OPEN	
	DIFFERENTIAL TYPE/SIZE:D 5000	
	LOCKING RATIO: WITHOUT	
	AXLE RATIO: 27,000	
	PLANETARY DRIVE: P3, I=6,353	
	SEALING TYPE OF SHAFT STANDARD	
	BRAKE : SERVICE BRAKE	
	SERVICE BRAKE : 2X MULTI-DISC BRAKE 446X324X5	
	MULTI-DISC BRAKE: SINTER-LINED CLUTCH DISC	
	PISTON SEAL: STANDARD	
	BRAKE PORT SIZE: M18 X 1,5 VERTIKAL	
	RIM PITCH CIRCLE DIAM.:500,00 MM	
	WHEEL CONNECTION: BOLT 23 X M22 X 1,5	



Pos.	Information	Amendment number
	WHEEL NUTS: WITHOUT	
	OIL FILLING AXLE DRIVE: WITH	
	OIL FILLER: ON THE SIDE	
	AXLE OIL COOLING: WITHOUT	
	OIL-GRADE AXLE DRIVE: TE ML 05 (TITAN POWERFLUID)	
	OIL-GRADE ALLOWED: TE ML 05 E/F/G	
	ZFP_A1_FREIGANG_GESTAEN: WITHOUT	
	PRIMER PAINT: YELLOW RAL 1006	
	PAINT-FREE AREA: INPUT FLANGE	
	TYPE PLATE	
	TYPE PLATE: ZF- STANDARD	
	AXLE BREATHER: WITHOUT	
	OIL FILL QUANTITY CA: 58,40 L	
	DOCUMENTATION: -----	
	SECTION DRAWING: 4474 055 005	
	INSTALLATION DRAWING: 4474 655 026	
	INSTALL. INSTRUCTION: 4474.700.088	
	TESTING INSTRUCTION: 4474.760.009	
	ASSEMBLY INSTRUCTION: 4474.700.101	

Assembly group overview

Page 1 from 1

Material number: 4474.055.034



MT-L 3115 II /

Picture	Pos.	Material number	Name	Quantity	Amend. no.	Techn. Info.
447415201800	60	4474.152.018	AXLE DRIVE HOUSING	1		
447415405500	10	4474.154.055	INPUT	1		
446016564750	20	4460.165.647	INPUT FLANGE	1		
448117104800	30	4481.171.048	DIFFERENTIAL	1		
447415505000	70	4474.155.050	AXLE CASING	1		
447415612300	130	4474.156.123	OUTPUT	1		
447415701100	40	4474.157.011	BRAKE	1		
447415505000	80	4474.155.050	AXLE CASING	1		
447415612300	140	4474.156.123	OUTPUT	1		
447415701100	50	4474.157.011	BRAKE	1		
447415801050	160	4474.158.010	AXLE PARTS	1		
447429819800	KIT	4474.298.198	OUTPUT	1		

Picture

Page 1 from 1

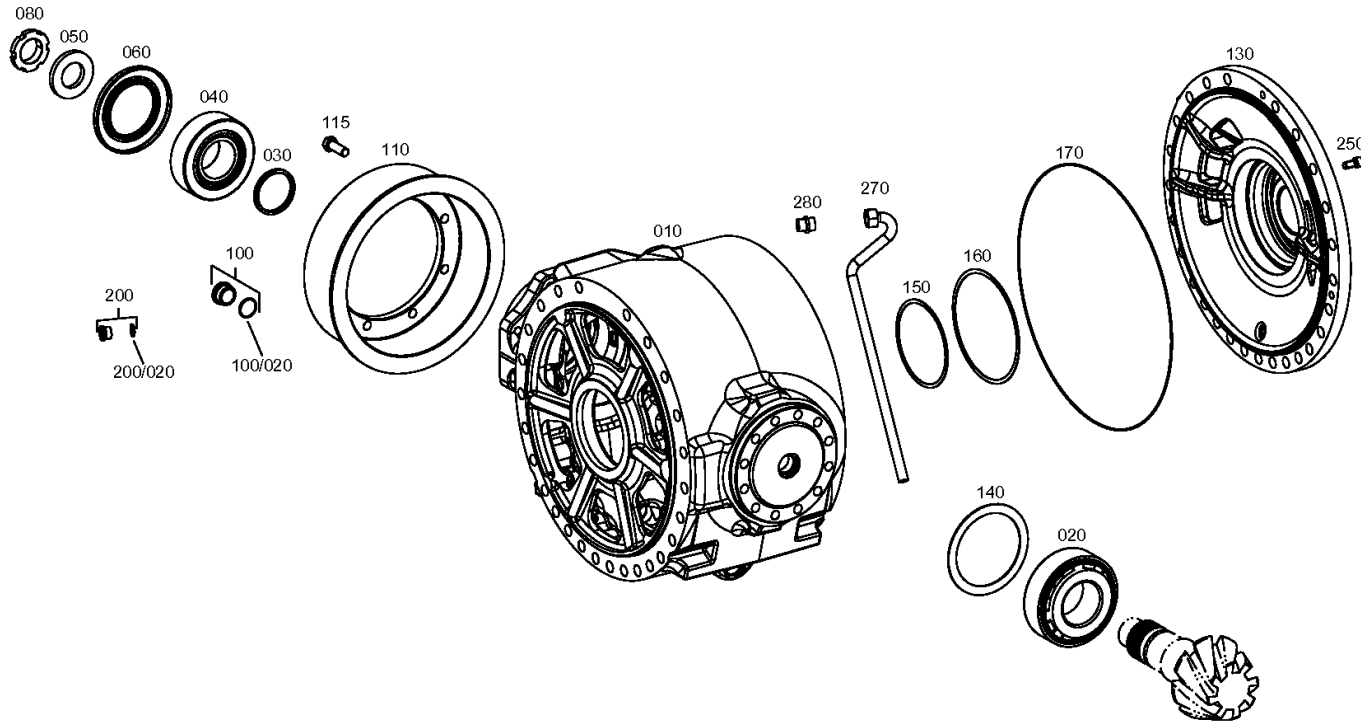
Material number: 4474.055.034

Picture: 447415201800

Material-assembly-group-no: 4474.152.018



MT-L 3115 II /
AXLE DRIVE HOUSING



Picture

Page 1 from 1

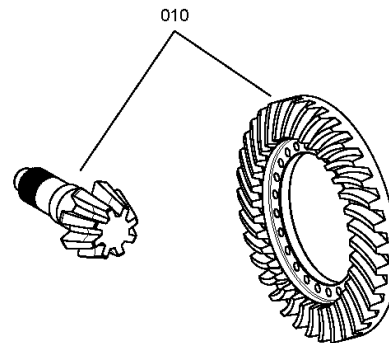
Material number: 4474.055.034

Picture: 447415405500

Material-assembly-group-no: 4474.154.055



MT-L 3115 II /
INPUT



Picture

Page 1 from 1

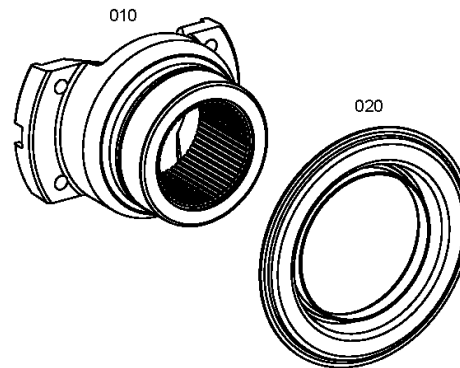
Material number: 4474.055.034

Picture: 446016564750

Material-assembly-group-no: 4460.165.647



MT-L 3115 II /
INPUT FLANGE



Picture

Page 1 from 1

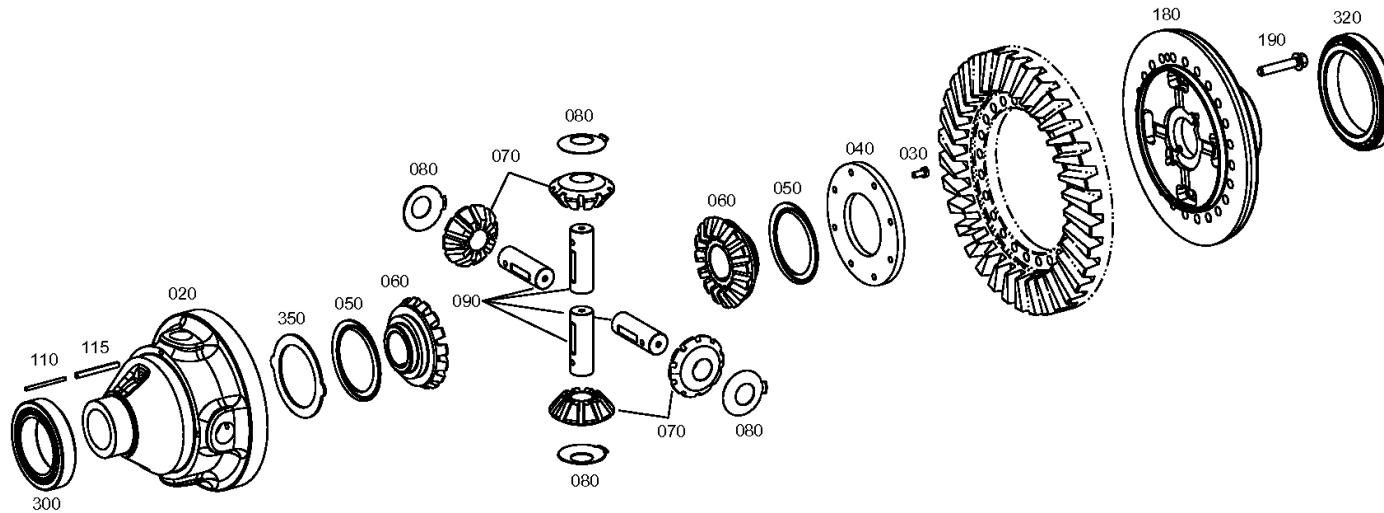
Material number: 4474.055.034

Picture: 448117104800

Material-assembly-group-no: 4481.171.048



MT-L 3115 II /
DIFFERENTIAL



Picture

Page 1 from 1

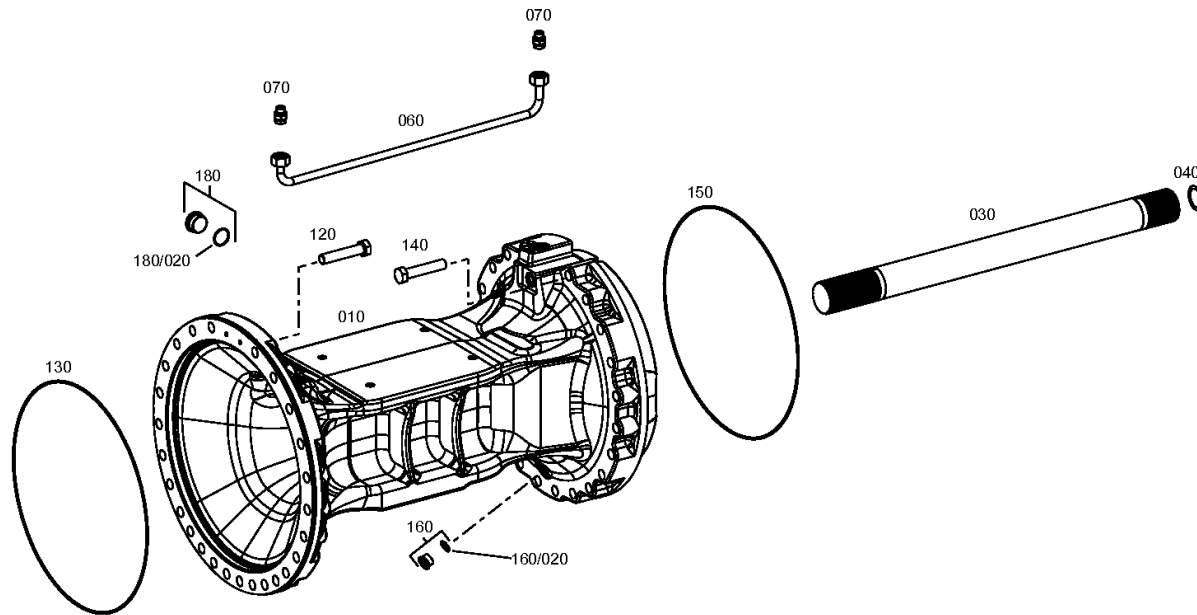
Material number: 4474.055.034

Picture: 447415505000

Material-assembly-group-no: 4474.155.050



MT-L 3115 II /
AXLE CASING



Picture

Page 1 from 1

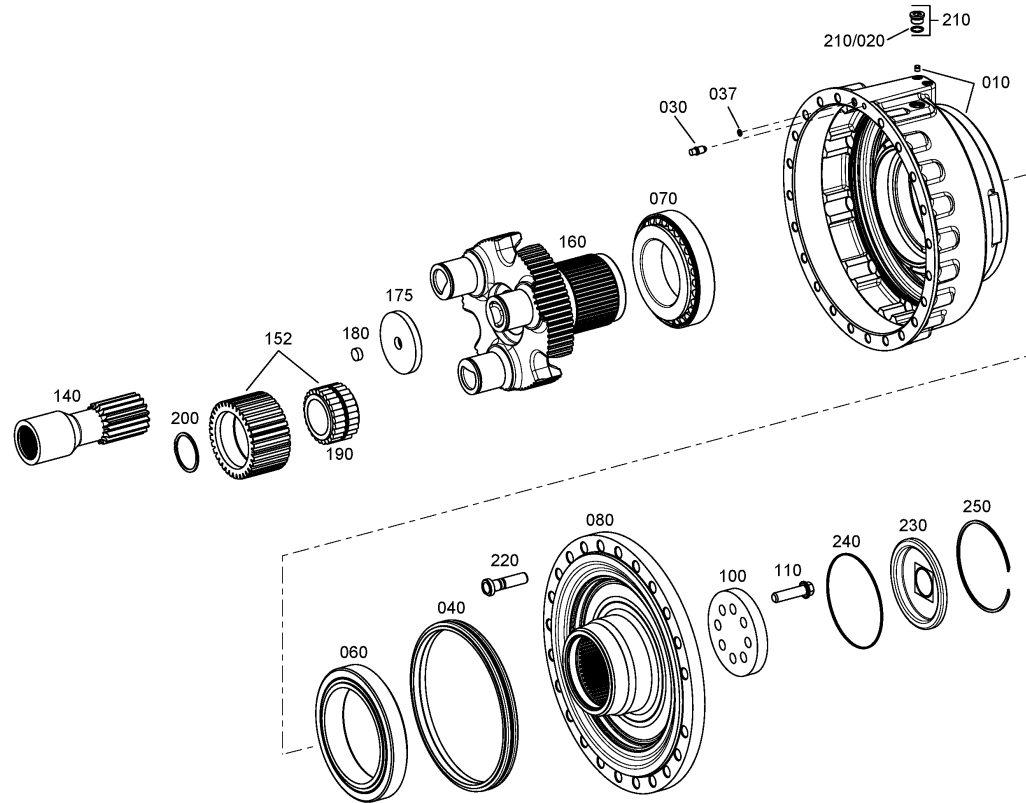
Material number: 4474.055.034

Picture: 447415612300

Material-assembly-group-no: 4474.156.123



MT-L 3115 II /
OUTPUT



rechts/links
right/left
destra/sinistra
droite/gauche
derecho/izquierdo

Picture

Page 1 from 1

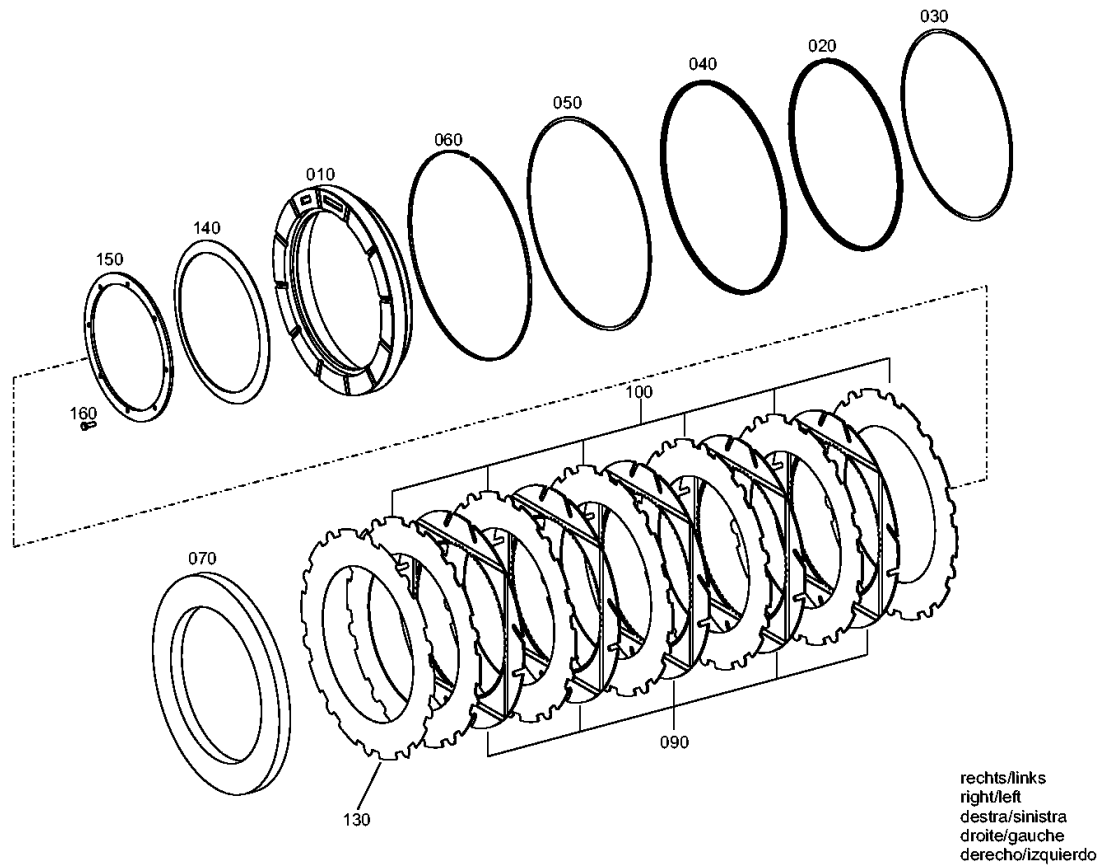
Material number: 4474.055.034

Picture: 447415701100

Material-assembly-group-no: 4474.157.011



MT-L 3115 II /
BRAKE



Picture

Page 1 from 1

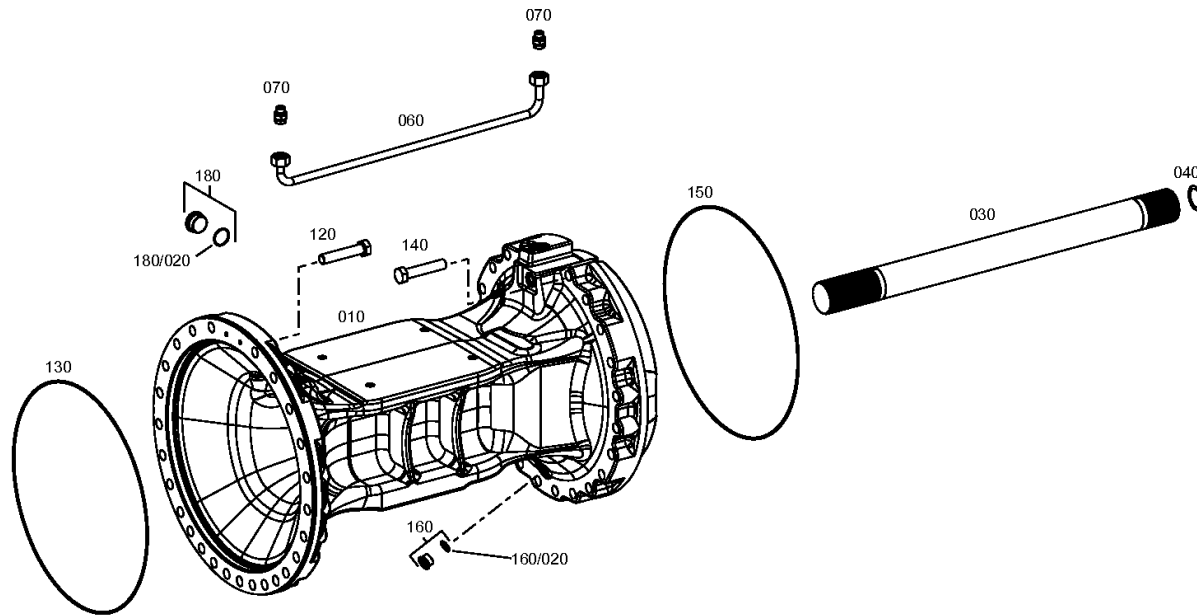
Material number: 4474.055.034

Picture: 447415505000

Material-assembly-group-no: 4474.155.050



MT-L 3115 II /
AXLE CASING



Picture

Page 1 from 1

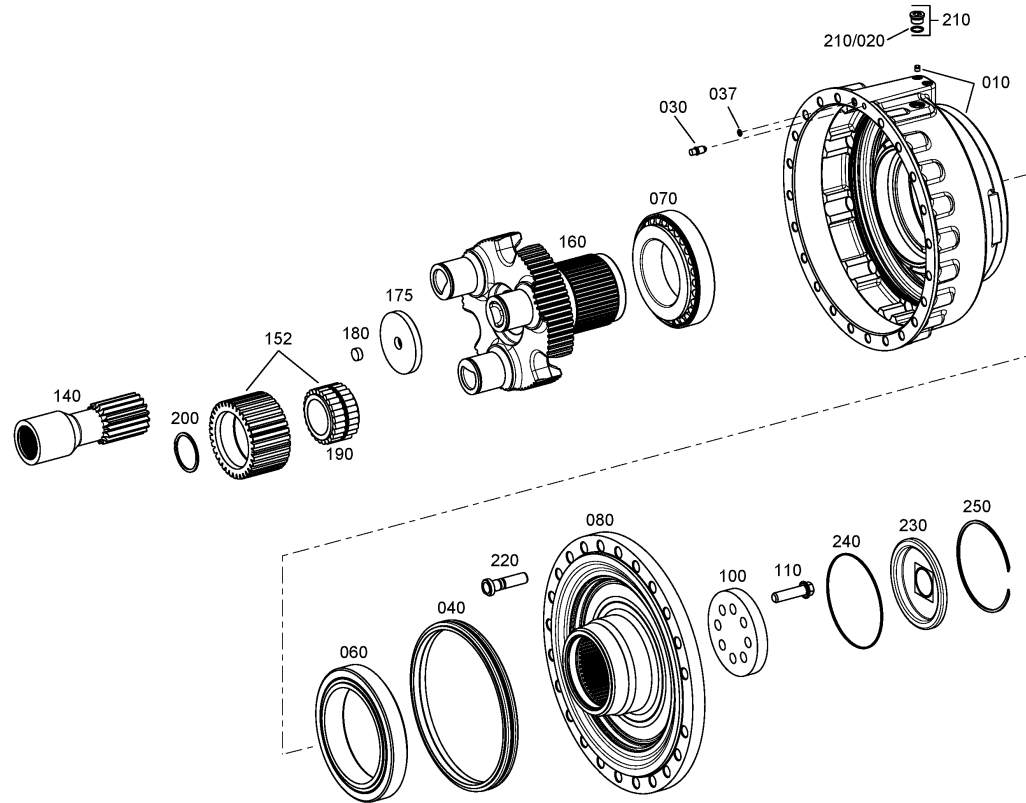
Material number: 4474.055.034

Picture: 447415612300

Material-assembly-group-no: 4474.156.123



MT-L 3115 II /
OUTPUT



rechts/links
right/left
destra/sinistra
droite/gauche
derecho/izquierdo

Picture

Page 1 from 1

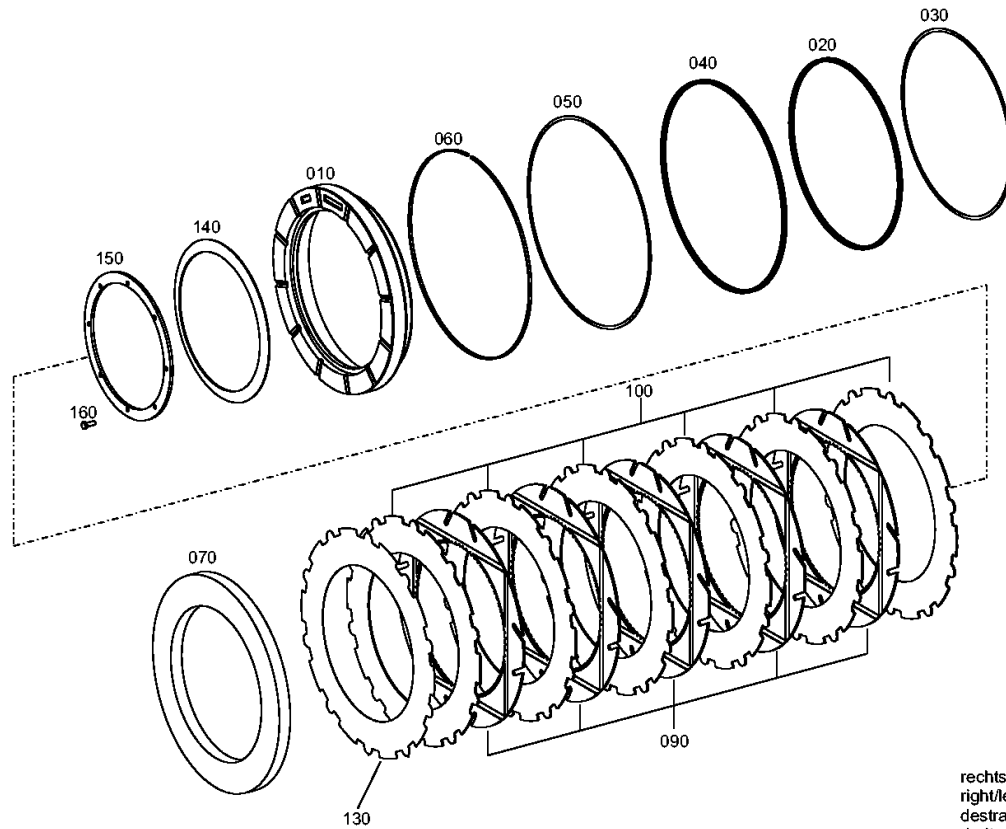
Material number: 4474.055.034

Picture: 447415701100

Material-assembly-group-no: 4474.157.011



MT-L 3115 II /
BRAKE



rechts/links
right/left
destra/sinistra
droite/gauche
derecho/izquierdo

Picture

Page 1 from 1

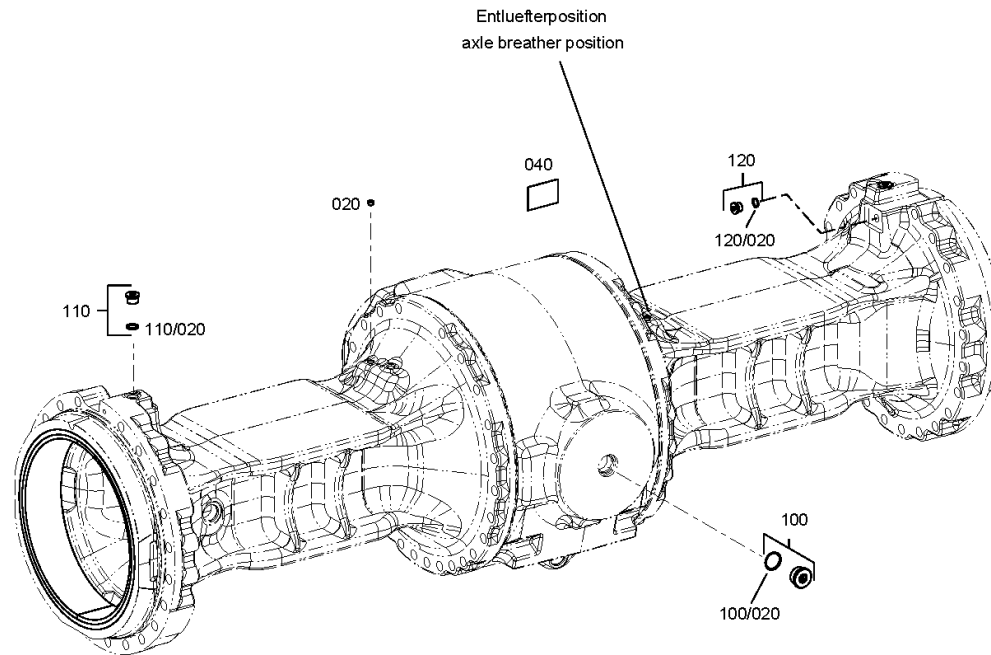
Material number: 4474.055.034

Picture: 447415801050

Material-assembly-group-no: 4474.158.010



MT-L 3115 II /
AXLE PARTS



Picture

Page 1 from 1

Material number: 4474.055.034

Picture: 447429819800

Material-assembly-group-no: 4474.298.198



MT-L 3115 II /
OUTPUT

Kit
4474 298 198

