



# Spare Parts Catalog

MT-L 3125 II

Material number: 4474.056.027

Current date: 19.10.2022

ZF Friedrichshafen AG  
Hauptverwaltung  
80038 Friedrichshafen  
Deutschland

Telefon: +49 7541 77-0

Telefax: +49 7541 77-908000

[www.zf.com](http://www.zf.com)

zuständiges Werk:  
Passau

# Notes relating to the spare parts catalog

## Setup of the spare parts catalog

- Cover sheet
- Technical Cover (only in SDM print)
- Overview of figures
- Figure
- Associated parts list
- Next figure
- Associated parts list
- ...

## Figure and parts list



## Overview of figures

| Bildtafel<br>Figure | Sachnummer<br>Product number | Benennung<br>(Description) | Technische Info<br>Technical info | Description<br>(Benennung) | Menge<br>Quantity | Einheit<br>Unit |
|---------------------|------------------------------|----------------------------|-----------------------------------|----------------------------|-------------------|-----------------|
| 068.08.17           | 1316.170.001                 | AUSLEGER                   | WL                                | SHIFT TURRET               | 1                 | Stk             |
| 068.08.06           | 1316.170.031                 | DECKEL                     | WL*H-H *VM                        | COVER                      | 1                 | Stk             |
| 068.08.14           | 1316.170.808                 | DECKEL                     | WL*AUSL+GEH*H-H*HF160N            | COVER                      | 1                 | Stk             |
| 08                  | 1316.170.441                 | ANSCHLUSSTEILE             | WL*NG-VORB*RG-SCHL*168N *BAJONETT | CONNECTING PARTS           | 1                 | Stk             |

The "gap" indicates that there is no separate graphics panel (poster) for this assembly  
The parts of this assembly are shown with the same mid-section number on the figure

### 1 Positions and subpositions

| Pos.  | Sachnummer<br>Product number | Benennung<br>(Description) | Technische Info<br>Technical info | Description<br>(Benennung) | Menge<br>Quantity | Einheit<br>Unit |
|-------|------------------------------|----------------------------|-----------------------------------|----------------------------|-------------------|-----------------|
| 0370  | 1315.201.054                 | RUECKLAUFBOLZEN            | KPL.16S151*SG*L= 79               | REV.IDLER SHAFT            | 1                 | Stk             |
| /0120 | 0631.329.293                 | SPANNSTIFT                 |                                   | SLOT. PIN                  | 1                 | Stk             |

Positions marked with "/" are the individual items of a completion  
For example: Position 0370 contains a centering pin with the position /0120

### 2 Combinations with standardized parts

| Pos. | Sachnummer<br>Product number | Benennung<br>(Description) | Technische Info<br>Technical info | Description<br>(Benennung) | Menge<br>Quantity | Einheit<br>Unit |
|------|------------------------------|----------------------------|-----------------------------------|----------------------------|-------------------|-----------------|
| 0630 |                              | VERSCHL.SCHR.              |                                   | SCREW PLUG                 | 1                 | Stk             |
|      | 0636.302.067                 | VERSCHL.SCHR.              |                                   | SCREW PLUG                 | 1                 | Stk             |
|      | 0634.801.249                 | DICHTRING                  | A 26 X 31                         | SEALING RING               | 1                 | Stk             |

The parts list shows the components included in the combination of standardized parts

### 3 Depiction of position/item number on the figure and in the parts list

01.620 - on the figure      01 relates to the assembly in which the position is included. Due to program-related reasons, it is shown on the figure.

0620 - in the parts list

| Pos. | Sachnummer<br>Product number | Benennung<br>(Description) | Technische Info<br>Technical info | Description<br>(Benennung) | Menge<br>Quantity | Einheit<br>Unit |
|------|------------------------------|----------------------------|-----------------------------------|----------------------------|-------------------|-----------------|
| 0620 | 0732.040.736                 | DRUCKFEDER                 |                                   | COMPRESSION SPRING         | 1                 | Stk             |

### 4 \*-Positions

Positions marked with an \* are optional i.e. inclusion in the parts list is not mandatory.  
The following note is shown on the figure

je nach Stücklistenausführung  
depending on spec. number  
\*  
suivant la nomenclature  
secondo la distinta base

### 5 Parts, dotted display

Parts with dotted display on the figure are only used for orientation of other parts

# Technical Cover

Page 1 from 2

Material number: 4474.056.027



MT-L 3125 II /

| Pos. | Information                                   | Amendment number |
|------|---|------------------|
|      | VEHICLE DATA: -----                           |                  |
|      | CUSTOMER: GUANGXI LIUGONG MACHINERY           |                  |
|      | VEHICLE DESIGNATION: CLG888III                |                  |
|      | TYRE SIZE: 29.5 R25L4                         |                  |
|      | TYRE RADIUS DYN.: 0,840 M                     |                  |
|      | MAX. SPEED: 40 KM/H                           |                  |
|      | TRACK WIDTH: 2.450 MM                         |                  |
|      | PRODUCT DESCRIPTION: ZF- MULTITRAC-AXLE       |                  |
|      | VEHICLE TYPE: WHEEL LOADER                    |                  |
|      | AXLE TYPE: MT-L 3125 II                       |                  |
|      | VERSION: RIGID                                |                  |
|      | AXLE ARRANGEMENT: FRONT AXLE                  |                  |
|      | DIRECTION OF ROTATION: CW                     |                  |
|      | CROWN WHEEL POSITION: LEFT                    |                  |
|      | SPIRAL DIRECTION: RIGHT                       |                  |
|      | INPUT FLANGE: MECH 8,5 C                      |                  |
|      | FLANGE TO FLANGE DIM: 2.600 MM                |                  |
|      | AXLE INSTALLATION: SPRING PAD                 |                  |
|      | MOUNTING DIMENSIONS: 965X1219X238 8XD=38      |                  |
|      | BRAKE TUBE: INTERNAL                          |                  |
|      | MAIN DIFFERENTIAL: NON-SLIP DIFFERENTIAL      |                  |
|      | DIFF. TYPE/SIZE: DHL 5000                     |                  |
|      | LOCKING RATIO: 100%                           |                  |
|      | DIFFERENTIAL LOCK: DIFFERENTIAL LOCK          |                  |
|      | ACTUATION: HYDRAULIC                          |                  |
|      | PORT SIZE: M 12 X 1,5                         |                  |
|      | AXLE RATIO: 27,000                            |                  |
|      | PLANETARY DRIVE: P4, I=6,353                  |                  |
|      | SEALING TYPE OF SHAFT: STANDARD               |                  |
|      | BRAKE : SERVICE BRAKE                         |                  |
|      | SERVICE BRAKE : 2X MULTI-DISC BRAKE 446X324X5 |                  |
|      | MULTI-DISC BRAKE: SINTER-LINED CLUTCH DISC    |                  |
|      | PISTON SEAL: STANDARD                         |                  |

# Technical Cover

Page 2 from 2

Material number: 4474.056.027



MT-L 3125 II /

| Pos. | Information                                       | Amendment number |
|------|---|------------------|
|      | BRAKE PORT SIZE: M18 X 1,5 VERTIKAL               |                  |
|      | RIM PITCH CIRCLE DIAM:500,00 MM                   |                  |
|      | WHEEL CONNECTION: BOLT 23 X M22 X 1,5             |                  |
|      | WHEEL NUTS: WITHOUT                               |                  |
|      | OIL FILLING AXLE DRIVE: WITH                      |                  |
|      | OIL FILLER: CENTRAL                               |                  |
|      | AXLE OIL COOLING: WITHOUT                         |                  |
|      | OIL-GRADE AXLE DRIVE: TE ML 05 (TITAN POWERFLUID) |                  |
|      | OIL-GRADE ALLOWED: TE ML 05 E/F/G                 |                  |
|      | PRIMER PAINT: YELLOW RAL 1006                     |                  |
|      | PAINT-FREE AREA: INPUT FLANGE                     |                  |
|      | TYPE PLATE  |                  |
|      | TYPE PLATE: ZF- STANDARD                          |                  |
|      | AXLE BREATHER: WITHOUT                            |                  |
|      | OIL FILL QUANTITY CA: 64,00 L                     |                  |
|      | DOCUMENTATION: -----                              |                  |
|      | SECTION DRAWING: 4474 055 005                     |                  |
|      | INSTALLATION DRAWG.: 4474 655 025                 |                  |
|      | INSTALL. INSTRUCTION: 4474.700.088                |                  |
|      | TESTING INSTRUCTION: 4474.760.009                 |                  |
|      | ASSEMBLY INSTRUCTION: 4474.700.101                |                  |
|      | REMARKS: 4474.700.096/4474.700.099                |                  |

# Assembly group overview

Page 1 from 1



MT-L 3125 II /

Material number: 4474.056.027

| Picture      | Pos. | Material number | Name               | Quantity | Amend. no. | Techn. Info. |
|--------------|------|-----------------|--------------------|----------|------------|--------------|
| 447415201950 | 60   | 4474.152.019    | AXLE DRIVE HOUSING | 1        |            |              |
| 447415405600 | 10   | 4474.154.056    | INPUT              | 1        |            |              |
| 446016564700 | 20   | 4460.165.647    | INPUT FLANGE       | 1        |            |              |
| 448117104500 | 30   | 4481.171.045    | DIFERENCIAL 5000   | 1        |            |              |
| 447415505100 | 70   | 4474.155.051    | AXLE CASING        | 1        |            |              |
| 447415612600 | 130  | 4474.156.126    | OUTPUT             | 1        |            |              |
| 447415701100 | 40   | 4474.157.011    | BRAKE              | 1        |            |              |
| 447415505100 | 80   | 4474.155.051    | AXLE CASING        | 1        |            |              |
| 447415612600 | 140  | 4474.156.126    | OUTPUT             | 1        |            |              |
| 447415701100 | 50   | 4474.157.011    | BRAKE              | 1        |            |              |
| 447415801000 | 160  | 4474.158.010    | AXLE PARTS         | 1        |            |              |
| 447429819900 | KIT  | 4474.298.199    | WHEEL HEAD         | 1        |            |              |

# Picture

Page 1 from 1

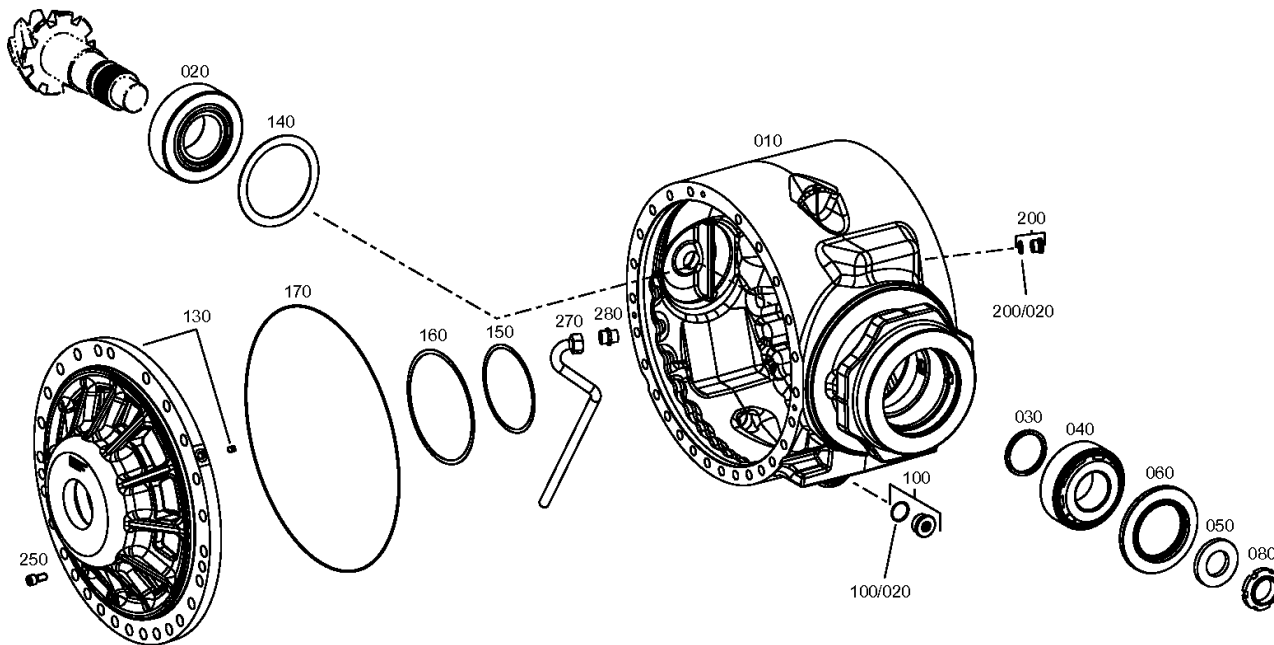
Material number: 4474.056.027

Picture: 447415201950

Material-assembly-group-no: 4474.152.019



MT-L 3125 II /  
AXLE DRIVE HOUSING



# Picture

Page 1 from 1

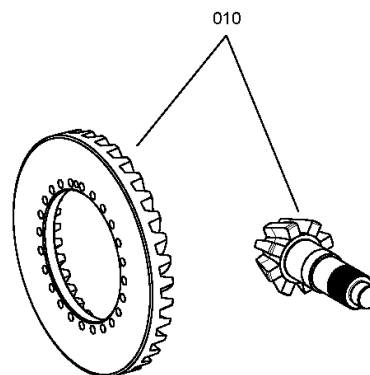
Material number: 4474.056.027

Picture: 447415405600

Material-assembly-group-no: 4474.154.056



MT-L 3125 II /  
INPUT



# Picture

Page 1 from 1

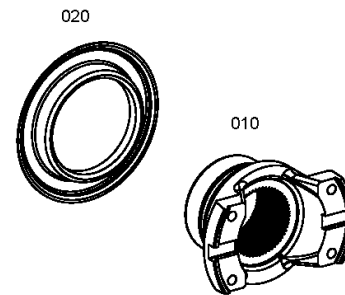
Material number: 4474.056.027

Picture: 446016564700

Material-assembly-group-no: 4460.165.647



MT-L 3125 II /  
INPUT FLANGE





# Picture

Page 1 from 1

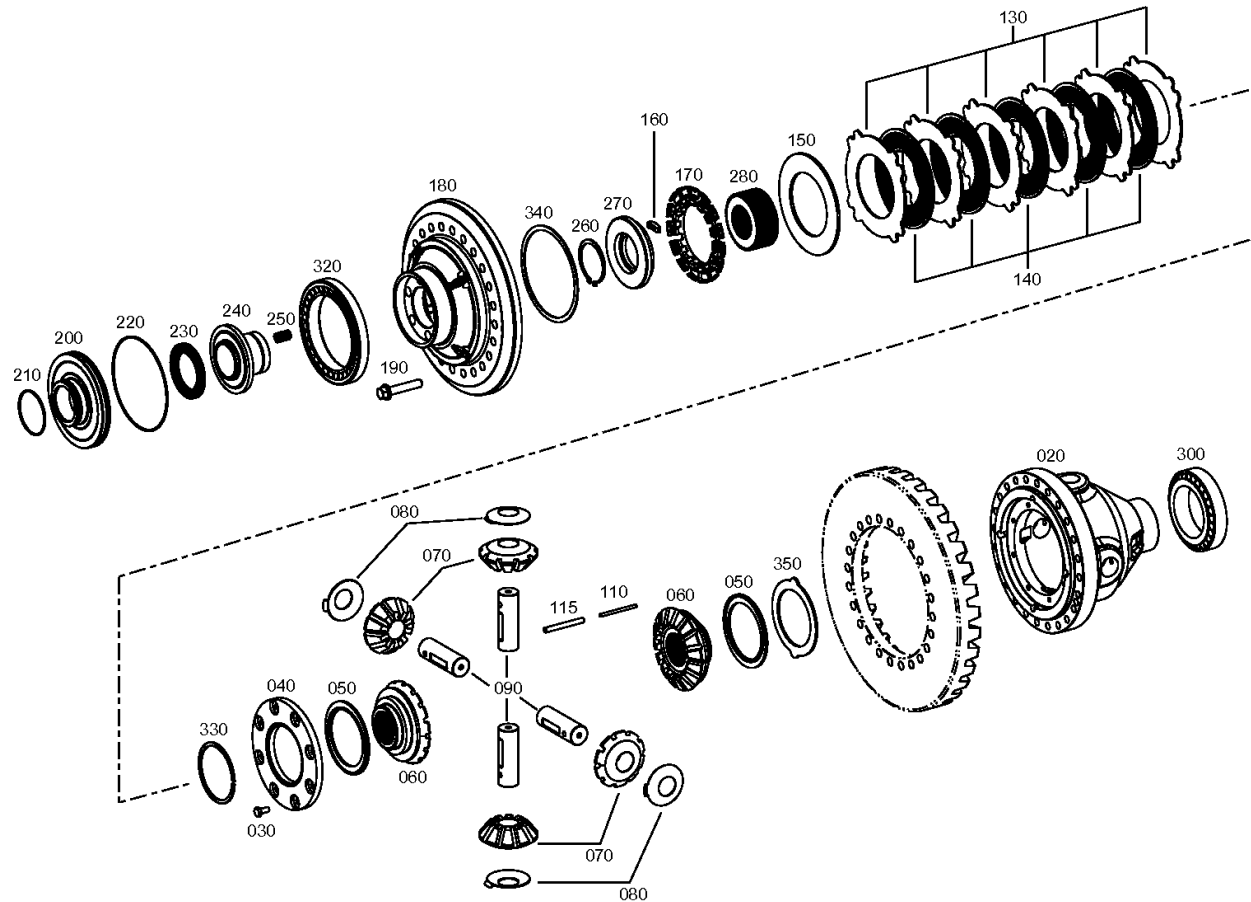
Material number: 4474.056.027

Picture: 448117104500

Material-assembly-group-no: 4481.171.045



MT-L 3125 II /  
DIFERENCIAL 5000



# Picture

Page 1 from 1

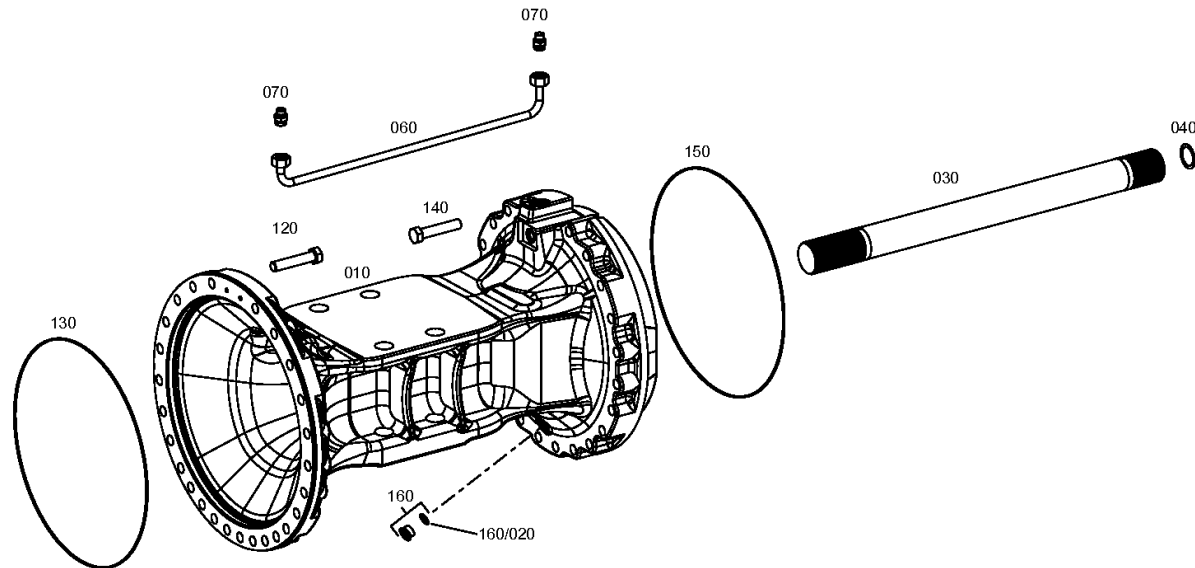
Material number: 4474.056.027

Picture: 447415505100

Material-assembly-group-no: 4474.155.051



MT-L 3125 II /  
AXLE CASING



# Picture

Page 1 from 1

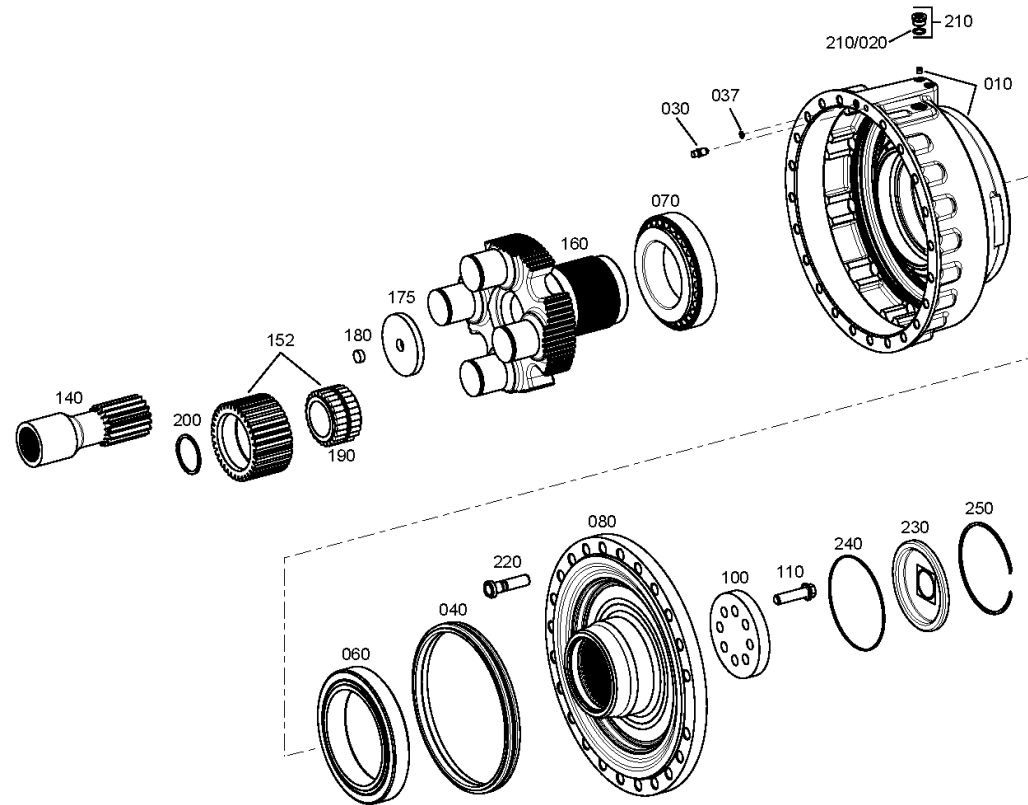
Material number: 4474.056.027

Picture: 447415612600

Material-assembly-group-no: 4474.156.126



MT-L 3125 II /  
OUTPUT



rechts/links  
right/left  
destra/sinistra  
droite/gauche  
derecho/izquierdo

# Picture

Page 1 from 1

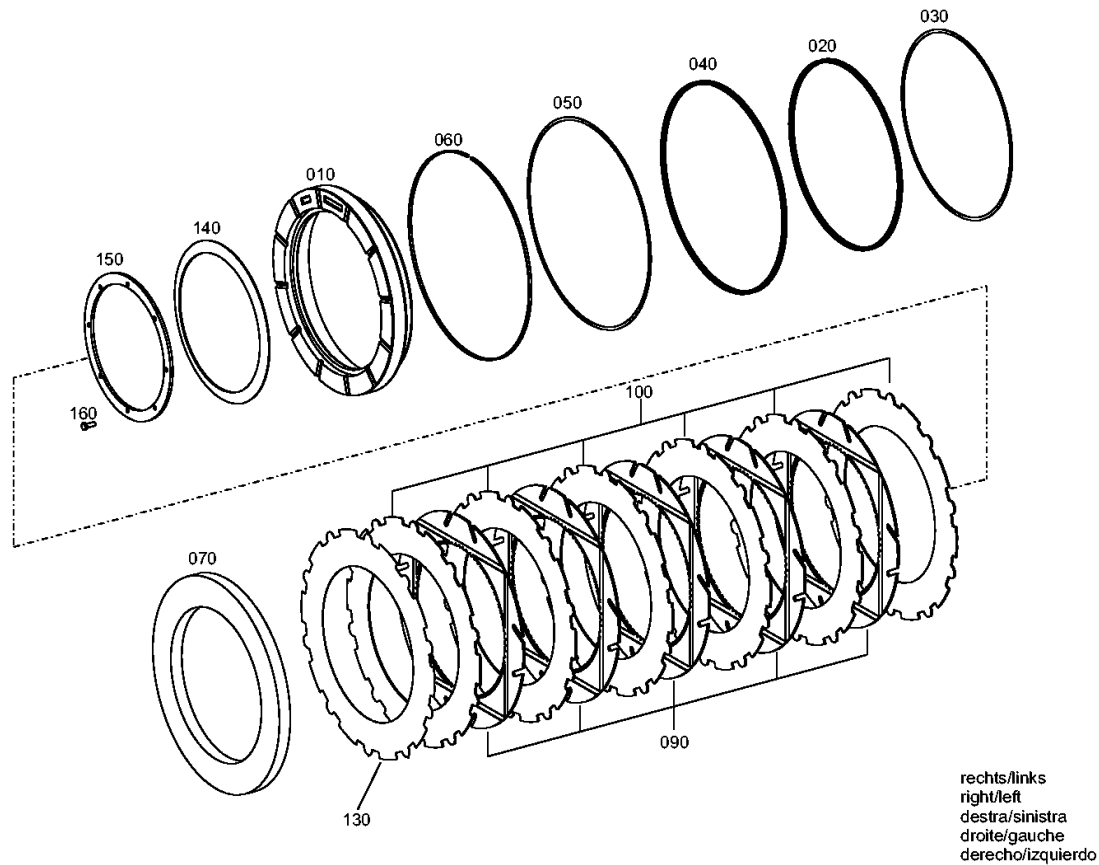
Material number: 4474.056.027

Picture: 447415701100

Material-assembly-group-no: 4474.157.011



MT-L 3125 II /  
BRAKE



# Picture

Page 1 from 1

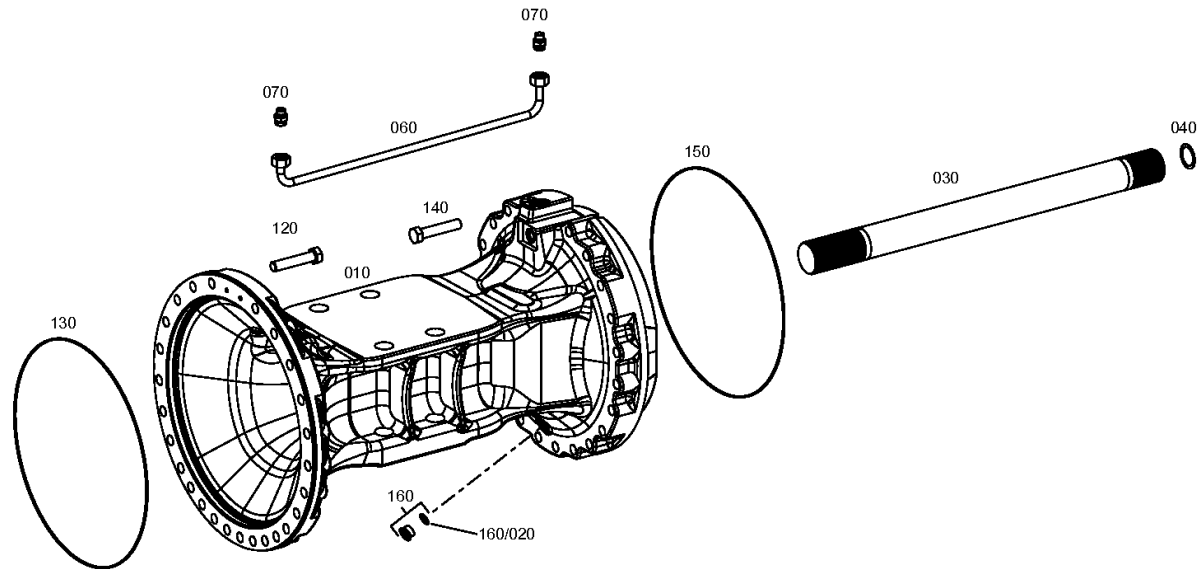
Material number: 4474.056.027

Picture: 447415505100

Material-assembly-group-no: 4474.155.051



MT-L 3125 II /  
AXLE CASING



# Picture

Page 1 from 1

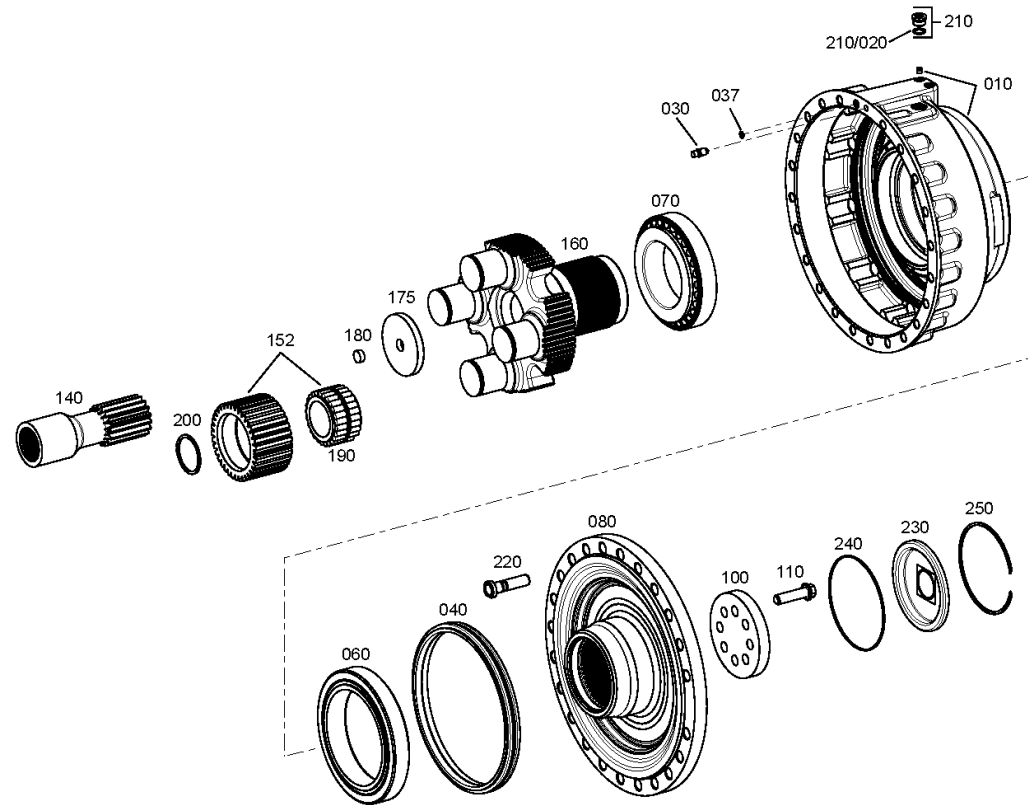
Material number: 4474.056.027

Picture: 447415612600

Material-assembly-group-no: 4474.156.126



MT-L 3125 II /  
OUTPUT



rechts/links  
right/left  
destra/sinistra  
droite/gauche  
derecho/izquierdo

# Picture

Page 1 from 1

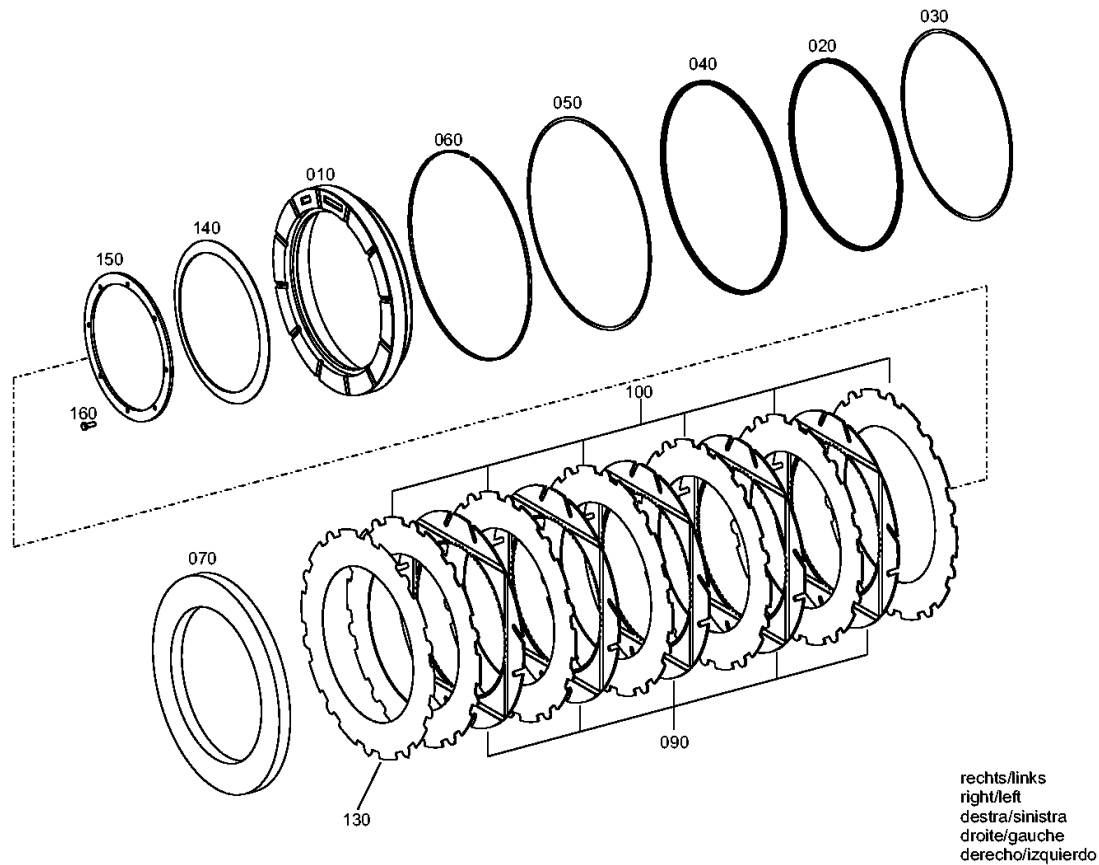
Material number: 4474.056.027

Picture: 447415701100

Material-assembly-group-no: 4474.157.011



MT-L 3125 II /  
BRAKE



# Picture

Page 1 from 1

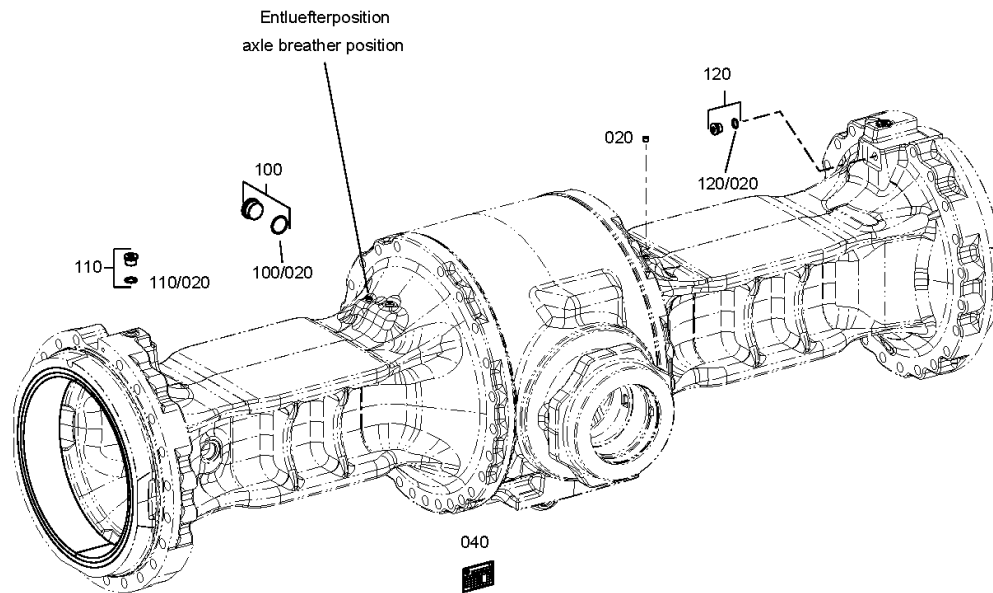
Material number: 4474.056.027

Picture: 447415801000

Material-assembly-group-no: 4474.158.010



MT-L 3125 II /  
AXLE PARTS





# Picture

Page 1 from 1

Material number: 4474.056.027

Picture: 447429819900

Material-assembly-group-no: 4474.298.199



MT-L 3125 II /  
WHEEL HEAD

Kit  
4474.298.199

