



# Spare Parts Catalog

4 WG 200(555/5)

Material number: 4644.024.207

Current date: 28.11.2022

ZF Friedrichshafen AG  
Hauptverwaltung  
80038 Friedrichshafen  
Deutschland

Telefon: +49 7541 77-0

Telefax: +49 7541 77-908000

[www.zf.com](http://www.zf.com)

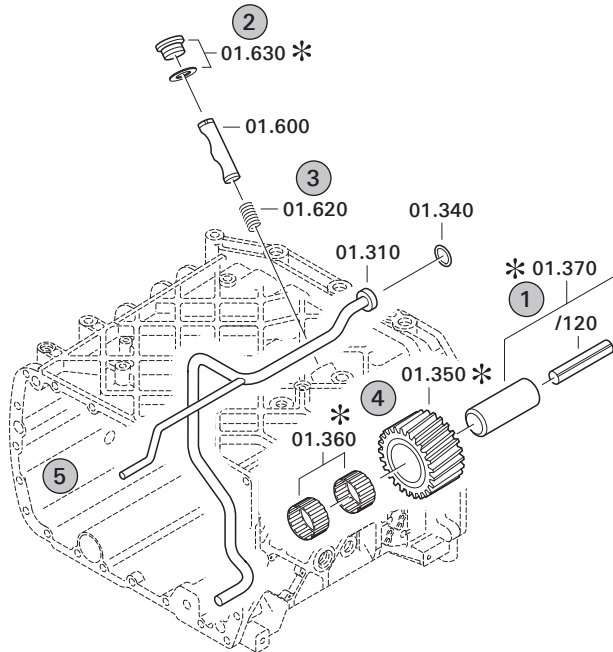
zuständiges Werk:  
Passau

# Notes relating to the spare parts catalog

## Setup of the spare parts catalog

- Cover sheet
- Technical Cover (only in SDM print)
- Overview of figures
- Figure
- Associated parts list
- Next figure
- Associated parts list
- ...

## Figure and parts list



## Overview of figures

Bildtafel Figure	Sachnummer Product number	Benennung (Description)	Technische Info Technical info	Description (Benennung)	Menge Quantity	Einheit Unit
068.08.17	1316.170.001	AUSLEGER	WL	SHIFT TURRET	1	Stk
068.08.06	1316.170.031	DECKEL	WL*H-H *VM	COVER	1	Stk
068.08.14	1316.170.808	DECKEL	WL*AUSL+GEH*H-H*HF160N	COVER	1	Stk
08	1316.170.441	ANSCHLUSSTEILE	WL*NG-VORB*RG-SCHL*168N *BAJONETT	CONNECTING PARTS	1	Stk

The "gap" indicates that there is no separate graphics panel (poster) for this assembly  
The parts of this assembly are shown with the same mid-section number on the figure

### 1 Positions and subpositions

Pos.	Sachnummer Product number	Benennung (Description)	Technische Info Technical info	Description (Benennung)	Menge Quantity	Einheit Unit
0370	1315.201.054	RUECKLAUFBOLZEN	KPL.16S151*SG*L= 79	REV.IDLER SHAFT	1	Stk
/0120	0631.329.293	SPANNSTIFT		SLOT. PIN	1	Stk

Positions marked with "/" are the individual items of a completion  
For example: Position 0370 contains a centering pin with the position /0120

### 2 Combinations with standardized parts

Pos.	Sachnummer Product number	Benennung (Description)	Technische Info Technical info	Description (Benennung)	Menge Quantity	Einheit Unit
0630		VERSCHL.SCHR.		SCREW PLUG	1	Stk
	0636.302.067	VERSCHL.SCHR.		SCREW PLUG	1	Stk
	0634.801.249	DICHTRING	A 26 X 31	SEALING RING	1	Stk

The parts list shows the components included in the combination of standardized parts

### 3 Depiction of position/item number on the figure and in the parts list

01.620 - on the figure      01 relates to the assembly in which the position is included. Due to program-related reasons, it is shown on the figure.

0620 - in the parts list

Pos.	Sachnummer Product number	Benennung (Description)	Technische Info Technical info	Description (Benennung)	Menge Quantity	Einheit Unit
0620	0732.040.736	DRUCKFEDER		COMPRESSION SPRING	1	Stk

### 4 \*-Positions

Positions marked with an \* are optional i.e. inclusion in the parts list is not mandatory.  
The following note is shown on the figure

je nach Stücklistenausführung  
depending on spec. number  
\*  
suivant la nomenclature  
secondo la distinta base

### 5 Parts, dotted display

Parts with dotted display on the figure are only used for orientation of other parts

# Technical Cover

Page 1 from 6

Material number: 4644.024.207



4 WG 200(555/5) /

Pos.	Information	Amendment number
	KUNDE:JOHN DEERE-USA	
	CUSTOMER:	
	IDENT-NO.: .....	
	CUSTOMER NO.:	
	PROJEKT-NR.:02781	
	PROJECT-NO.:	
	VEHICLE DATA:	
	VEHICLE DATA:	
	RADLADER 644 E	
	WHEEL-LOADER	
	VEHICLE EMPTY WEIGHT: 14,70T	
	VEHICLE WEIGHT: EMPTY.....T0	
	MOTOR: J.DEERE 6-466 A	
	ENGINE/MAKE/TYPE:	
	MOTORLEISTUNG: P=119 KW BEI N=2100 UPM	
	ENGINE POWER:	
	ENGINE PERFORM.ACC.TO TRACTIVE EFFORT CALCUL.	
	ENGINE PERFORM.ACC.TO TRACTIVE EFFORT CALCUL.	
	DREHMOMENT: T= 670 NM BEI N=1300 UPM	
	INPUT TORQUE:	
	REIFEN: 20.5-25 L2	
	TIRES:	
	R.DYN. 0,653 M	
	ACHSUEBERSETZUNG:I A-GES.= 20,87	
	AXLE RATIO: I TOTAL=	
	MAX.SPEED: 35,0 KM/H	
	MAX.SPEED:	
	PRODUCT DESCRIPTION:	
	PRODUCT DESCRIPTION	
	TYP: 4WG-200(555)	
	BEVEL SIDE GEAR SPLINE: N 38X1,25	
	RATIOS TOTAL:	
	RATIOS:	



Pos.	Information	Amendment number
	FORWARD:	
	FORWARD:	
	1.G=4,170 2.G=2,596 3.G=1,179 4.G=0,678	
	REVERSE:	
	REVERSE:	
	1.G=4,170 2.G=2,596 3.G=1,179	
	HIGH GEARING: YES	
	HIGH GEARING: YES	
	INPUT:	
	INPUT:	
	UNIVERSAL JOINT SHAFT ATTACHMENT	
	UNIVERSAL JOINT SHAFT ATTACHMENT	
	FLANSCH MECH.6C *LZ= 4 *D=3/8ZOLL	
	FLANGE:	
	OUTPUT:	
	OUTPUT:	
	FLANSCH: LI.MECH.7C*4X1/2ZOLL	
	FLANGE: LEFT	
	FLANSCH: RE.MECH.7C*4X1/2ZOLL	
	FLANGE: RIGHT	
	POWER TAKE-OFF(P.T.O):	
	P.T.O.:	
	KOAX.MOTORABH.: FL.SAE-C 4-L	
	COAX.ENGINE DRIV:FLANGE SAE-C 4-HOLE	
	COAX.ENGINE DRIV:SPL.SAE-C/12/24 DP/14T	
	COAX.ENGINE DRIV:SPL.SAE-C/12/24DP/14T	
	SEITL.MOTORABH.: OHNE	
	LATERAL/ENGINE DRIVEN:WITHOUT	
	REVERSING GEAR DRIVEN: NO	
	REVERSING GEAR DRIVEN: NO	
	TURB.DRIVEN NO	
	TURB.DRIVEN: NO	
	CONTR.MECH.: NO	

# Technical Cover

Page 3 from 6

Material number: 4644.024.207



4 WG 200(555/5) /

Pos.	Information	Amendment number
	CONTR.MECH.: NO	
	GEAR SELECTION:	
	GEAR SELECTION:	
	MECHANICAL	
	MECHANICAL	
	ARBEITSDRUCK: 15+2 BAR	
	OPERATING PRESSURE:	
	SCHALKRAFT: 110+10 N	
	ENGAGEMENT EFFORT:	
	ANSCHL.STEUERSCH:D=8 H10	
	CONNECTION CONTROL VALVE:	
	SICHERH.PAKET: OHNE	
	SAFETY PACK: WITHOUT	
	FOLGESTEUERUNG: NEIN	
	FOLLOW-UP VALVE: NO	
	REPLENISHING OIL:WITH	
	REPLENISHING OIL:WITH	
	KONTR.SCHALTER: MIT	
	CONTROL SWITCH: WITH	
	2-ST.DR.STEUERV.:MIT/K1	
	DOUBLE PRESSURE CONTROL VALVE: WITH	
	DRUCKABSCH.VENT.:FUER MINERALOEL	
	PRESSURE CUT-OFF VALVE:YES (MINERAL OIL)	
	CONTROL: HYDRAULIC	
	CONTROL: HYDRAULIC	
	INDUCTIVE SENSOR, TURBINE SIDE: WITHOUT	
	INDUCTIVE SENSOR,TURBINE SIDE:WITHOUT	
	INDUCTIVE SENSOR: WITHOUT	
	INDUCTIVE SENSOR,OUTPUT SIDE:WITHOUT	
	PARKING BRAKE:	
	PARKING BRAKE:	
	TROMMELBREMSE AUSFG.P1	
	DRUM BRAKE	



Pos.	Information	Amendment number
	TYP/GROESSE: 25 3024 D=250X60	
	TYPE/SIZE	
	SPEEDOMETER: WITHOUT	
	SPEEDOMETER: WITHOUT	
	OELMESSSTAB: WANDLERSEITIG(LOSTEIL)	
	OIL DIPSTICK: CONVERTER SIDE(LOOSE)	
	AXLE DISCONNECT: NO	
	AXLE DISCONNECT: WITHOUT	
	ZF-FILTER: INTEGRATED	
	ZF-FILTER: INTEGRATED	
	T-CONVERTER:	
	TORQUE CONVERTER:	
	BEZEICHNUNG: W340/34 H 002	
	MARKING:	
	GRUNDKURVE: 02 G 068 42 L.F.	
	CHARACTERISTICS:	
	ANFAHRWANDLUNG: 2,88	
	START.TORQUE RAT.:	
	STATOR FREEWHEEL:WITHOUT	
	STATOR FREEWHEEL:WITHOUT	
	BREAK FREEWHEEL: WITHOUT	
	BRAKE FREEWHEEL: WITHOUT	
	INERTIA TORQUE:	
	INERTIA TORQUE:	
	LOCK-UP CLUTCH: WITHOUT	
	LOCK-UP CLUTCH: WITHOUT	
	GROUND DRIV.PUMP: WITHOUT	
	GROUND DRIV.PUMP: WITHOUT	
	SECONDARY PUMP: WITHOUT	
	SECONDARY PUMP: WITHOUT	
	AXLE DIFFERENTIAL: WITHOUT	
	AXLE DIFFERENTIAL: WITHOUT	
	NOISE ABSORPTION PACKAGE: WITHOUT	



Pos.	Information	Amendment number
	NOISE ABSORPTION PACKAGE: WITHOUT	
	RETARDER: WITHOUT	
	RETARDER: WITHOUT	
	INCH-VALVE: WITHOUT	
	INCH-VALVE: WITHOUT	
	DRAWINGS:	
	DRAWINGS:	
	SCHNITT:AEHN:4644 004 043(R)	
	SECT.DRAWING:SIMILAR	
	EINBAU:AEHN.:4644 601 006(0)BL.1-14	
	INST.DRAWING:SIMILAR	
	EINBAU: 4644 624 007(0)	
	INST.DRAWING:	
	MOTOR-ANBAU: 4644 500 136(2)AEHNL.	
	ENGINE CONN.:	
	GETR.SCHEMA:IN 4644 624 007(0)	
	TRANSM.DIAGRAM:	
	OEL-SCHEMA: 4644 700 525 IN 523	
	OIL-DIAGRAM:	
	OELLEITUNG: 4644 600 056(4)	
	OIL PIPE:	
	WANDLER: 4168 034 006( )	
	TORQUE CONVERTER:	
	CALCULATIONS:	
	CALCULATIONS:	
	ZUGKRAFT: 4644 709 500	
	TR.FORCE DIAGRAM:	
	TORQUE CONV: .... ..	
	TORQUE CONVERTER:	
	PRUEFANWEISUNG: 4644 760 007(3)	
	TEST SPECIFICATION:	
	OIL CAPACITY:	
	OIL CAPACITY:	

# Technical Cover

Page 6 from 6



Material number: 4644.024.207

4 WG 200(555/5) /

Pos.	Information	Amendment number
	PHOSHATESTER: NO	
	PHOSPHATESTER: NO	
	MAIN TRANSMISSION: CA. 28,00L	
	MAIN TRANSMISSION:	
	OIL FILLING: NO	
	OIL FILLING: NO	
	OIL GRADE:SPECIFICATION TE ML 03 / TRANSMISSION	
	OIL GRADE:SPECIFICATION TE ML 03 TRANSMISSION	
	GESAMT-TROCKENMASSE: 436KG	
	WEIGHT/MASS (DRY):	
	COLOR: 2 YELLOW RAL 1006	
	COLOR:	
	FARBFREIE STELLEN SIEHE EINBAUZEICHNUNG	
	AREAS WITHOUT COLOR LOOK AT INST.DRAWING	
	PACKING:	
	PACKING:	
	COMPONENTS OF THIS ASSEMBLY WITHOUT ASBESTOS	
	COMPONENTS OF THIS ASSEMBLY WITHOUT ASBESTOS	
	MISCELLANEOUS/REMARKS:	
	MISCELLANEOUS/REMARKS	
	K1/K2/K3 U.ABTR.RAD MIT 24 GRAD-VERZAHNUNG	
	K1/K2/K3 AND OUTPUT GEAR WITH 24 DEGREE GEAR	
	MIT DRUCKSCHALTER IN DER KR-OELZULEITUNG	
	WHIT PRESSURE SWITCH AT REVERSE CLUTCH	
	MONTAGEANBAU DER SCHLAUCHL.N.4642 600 029	
	ASSEMBLY TERMINAL FROM HOSE PIPE 4642 600 029	
	*	



# Assembly group overview

Page 1 from 2



Material number: 4644.024.207

4 WG 200(555/5) /

Picture	Pos.	Material number	Name	Quantity	Amend. no.	Techn. Info.
464413026000	270	4644.130.260	ENGINE CONNECTION	1		
464413041200	280	4644.130.412	ENGINE CONNECTION	1		
416603400200	500	4166.034.002	CONVERTER	1		
464410209000	30	4644.102.090	INPUT	1		
464410122700	10	4644.101.227	TRANSMISSION HOUSING	1		
464410145200	20	4644.101.452	TRANSMISSION HOUSING	1		
464410821400	150	4644.108.214	COUNTERSHAFT	1		
464415122100	350	4644.151.221	COUPLING	1		
464415153000	355	4644.151.530	COUPLING	1		
464415211500	360	4644.152.115	COUPLING	1		
464415244800	365	4644.152.448	CLUTCH	1		
464415311100	370	4644.153.111	COUPLING	1		
464415343400	375	4644.153.434	CLUTCH	1		
464410308400	50	4644.103.084	OUTPUT	1		
464410342400	60	4644.103.424	OUTPUT	1		
464410920102	170	4644.109.201	PARKING BRAKE	1		

# Assembly group overview

Page 2 from 2



Material number: 4644.024.207

4 WG 200(555/5) /

Picture	Pos.	Material number	Name	Quantity	Amend. no.	Techn. Info.
464410840300	180	4644.109.403	PARKING BRAKE	1		
464210604420	110	4642.106.044	SHIFT SYSTEM	1		
464215904120	120	4642.159.041	SHIFT SYSTEM	1		
464412020100	190	4644.120.201	PRESSURE REGULATOR	1		
464413800100	330	4644.138.001	FILTER	1		
464213700500	310	4642.137.005	EMERGENCY STEERING PUMP	1		
464412520200	250	4644.125.202	INDUCTIVE SENSOR	1		
464412547100	260	4644.125.471	INDUCTIVE SENSOR	1		
	290	4644.131.020	FILLER NOZZLE	1		
464413147000	300	4644.131.470	FILLER NOZZLE	1		
464412120300	210	4644.121.203	OIL PIPE	1		
464419976800	490	4644.199.768	LOOSE PARTS	1		

# Picture

Page 1 from 1

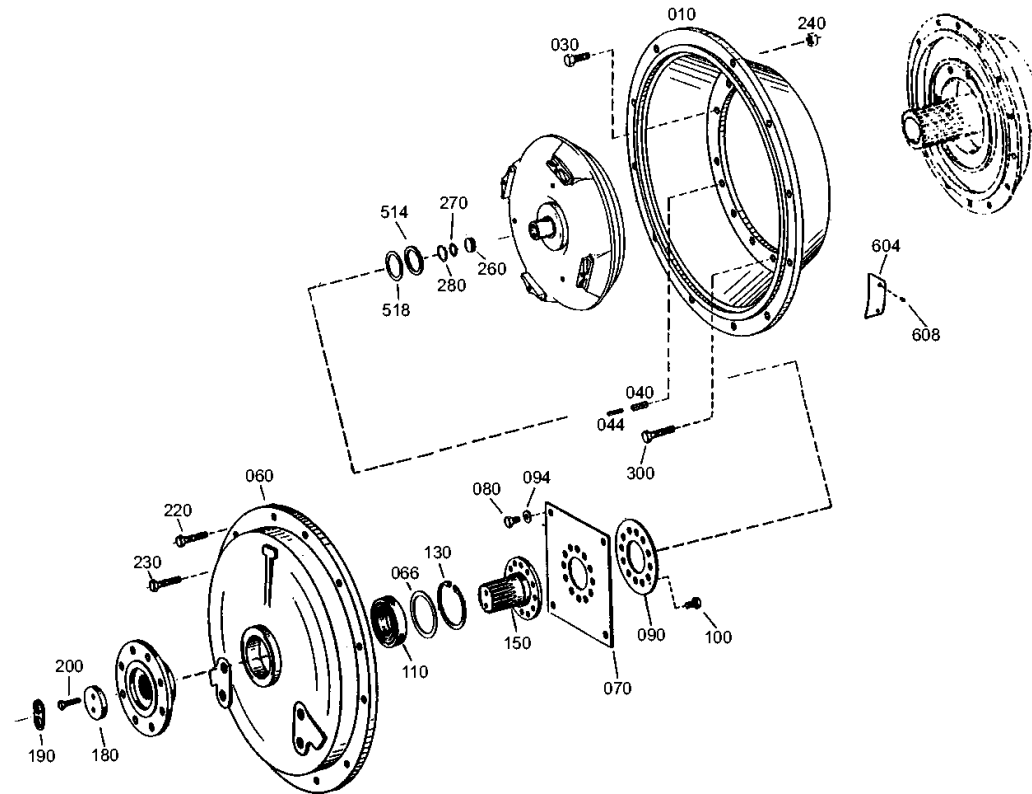
Material number: 4644.024.207

Picture: 464413026000

Material-assembly-group-no: 4644.130.260



4 WG 200(555/5) /  
ENGINE CONNECTION



# Picture

Page 1 from 1

Material number: 4644.024.207

Picture: 464413041200

Material-assembly-group-no: 4644.130.412



4 WG 200(555/5) /  
ENGINE CONNECTION



160

# Picture

Page 1 from 1

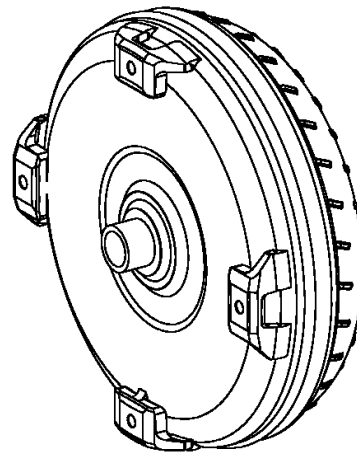
Material number: 4644.024.207

Picture: 416603400200

Material-assembly-group-no: 4166.034.002



4 WG 200(555/5) /  
CONVERTER



010

# Picture

Page 1 from 1

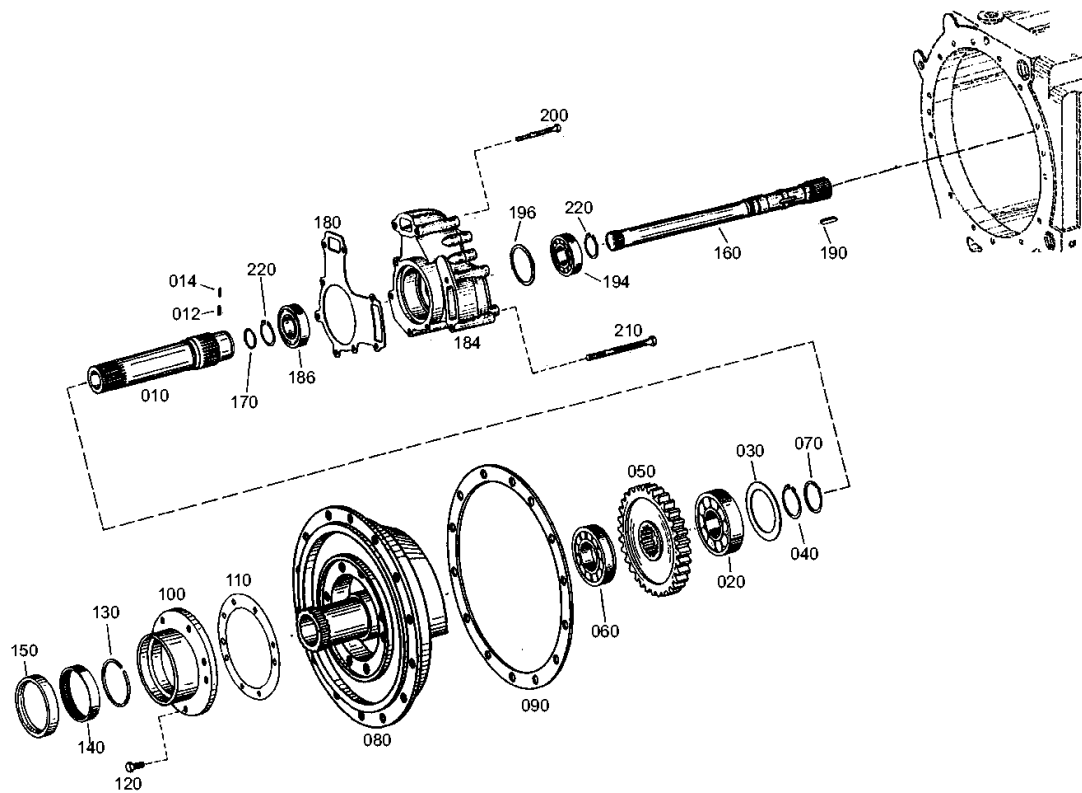
Material number: 4644.024.207

Picture: 464410209000

Material-assembly-group-no: 4644.102.090



4 WG 200(555/5) /  
INPUT



# Picture

Page 1 from 1

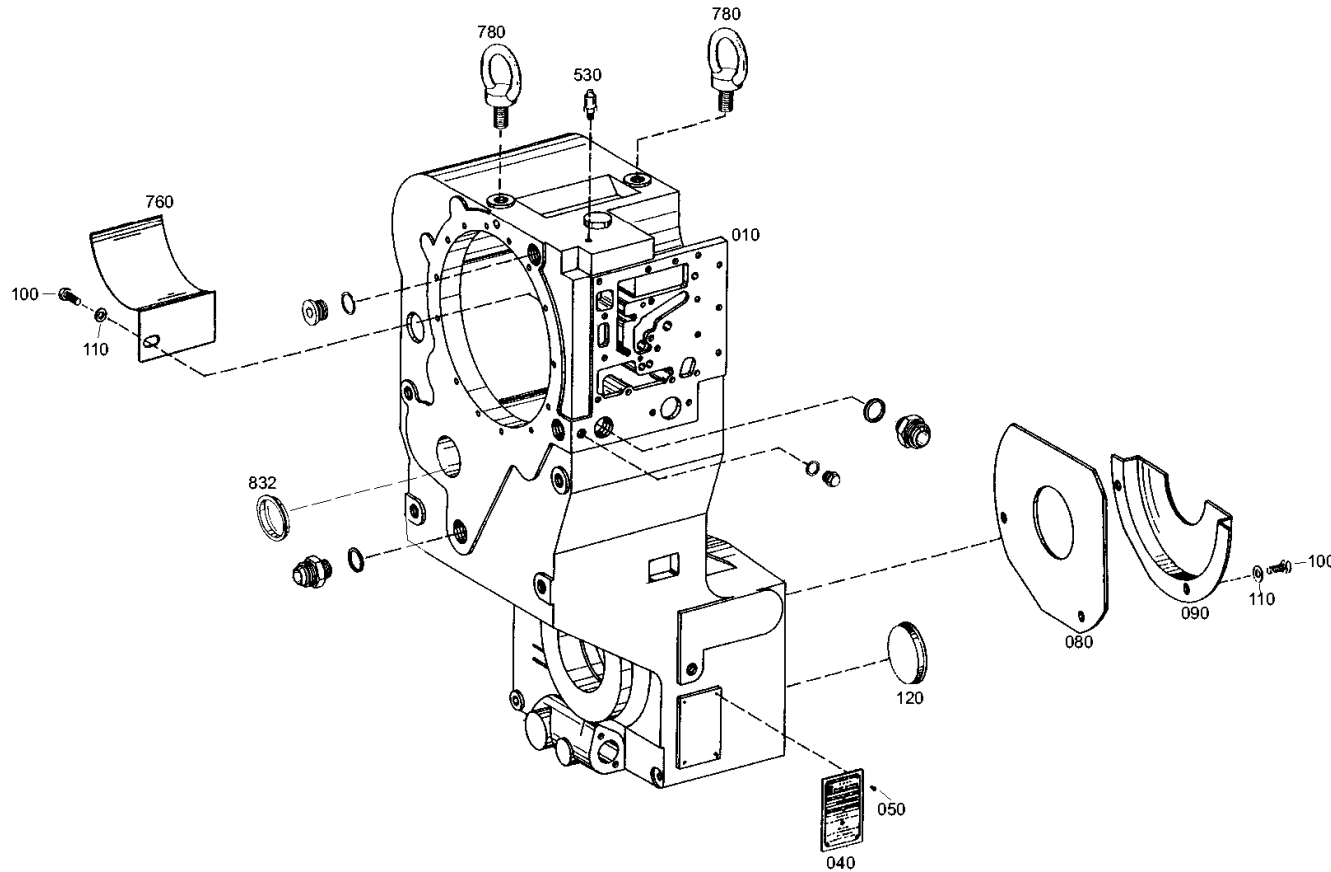
Material number: 4644.024.207

Picture: 464410122700

Material-assembly-group-no: 4644.101.227



4 WG 200(555/5) /  
TRANSMISSION HOUSING



# Picture

Page 1 from 1

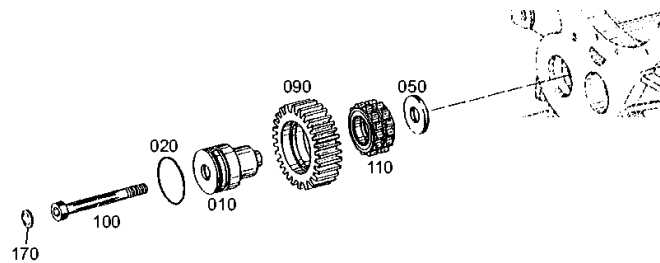
Material number: 4644.024.207

Picture: 464410821400

Material-assembly-group-no: 4644.108.214



4 WG 200(555/5) /  
COUNTERSHAFT





# Picture

Page 1 from 1

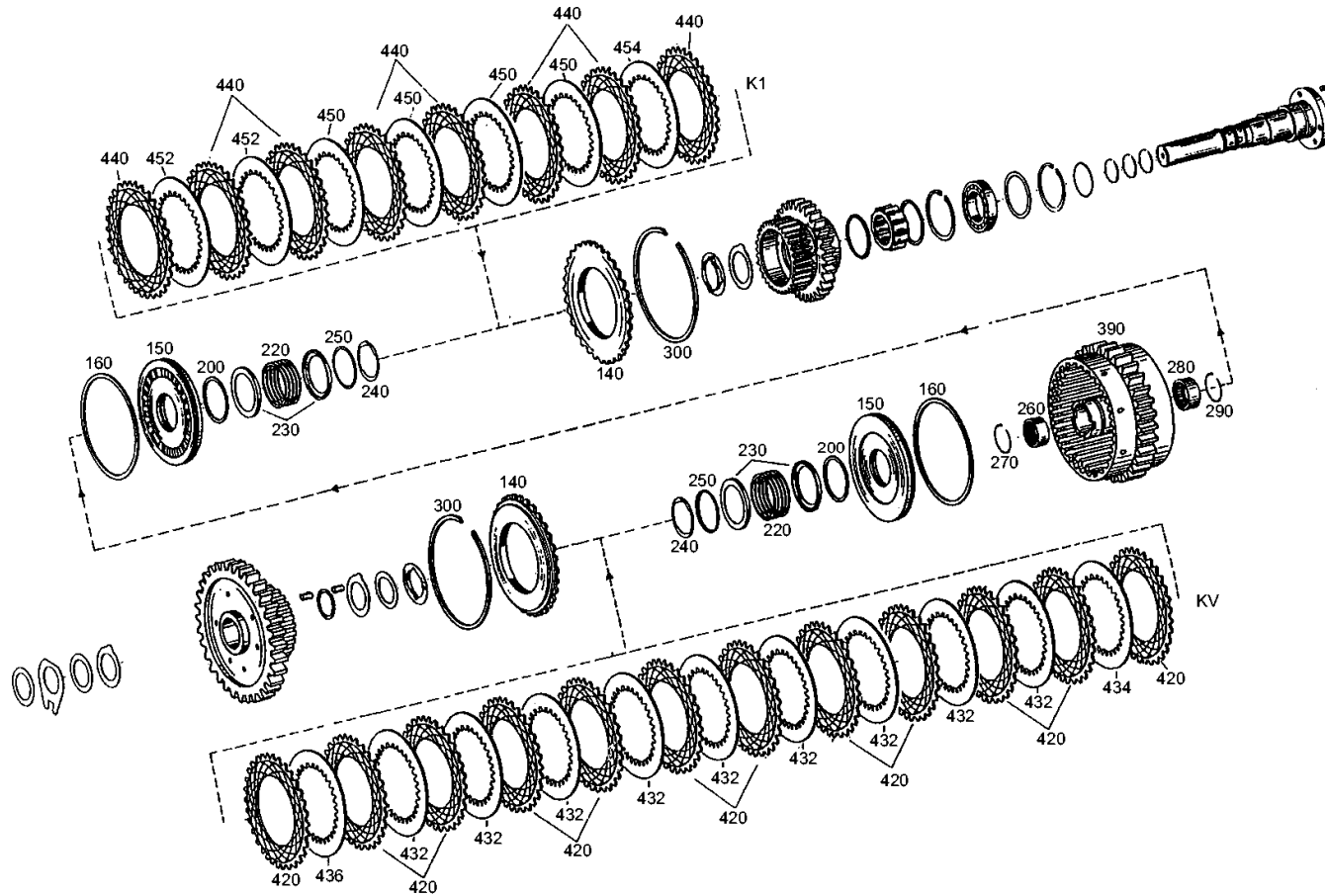
Material number: 4644.024.207

Picture: 464415122100

Material-assembly-group-no: 4644.151.221



4 WG 200(555/5) /  
COUPLING



# Picture

Page 1 from 1

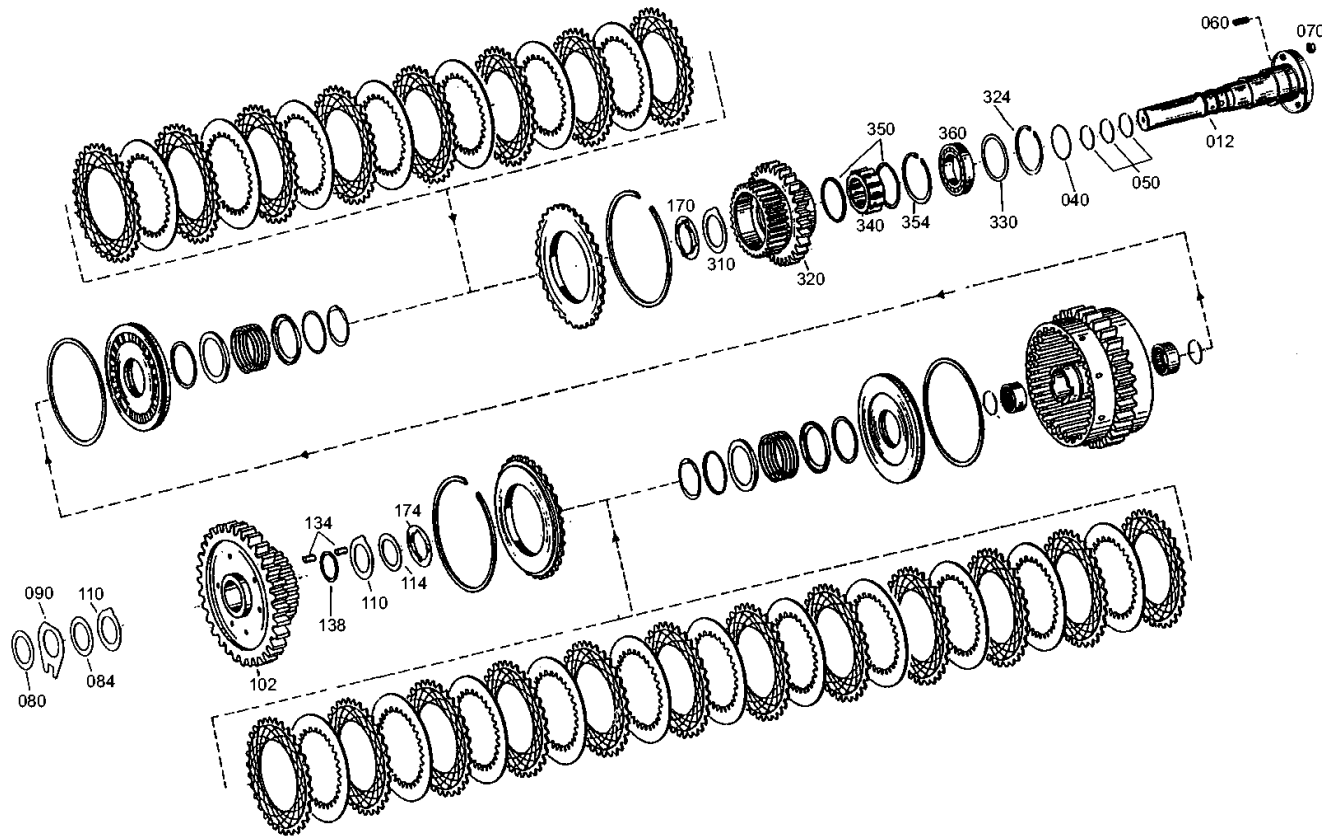
Material number: 4644.024.207

Picture: 464415153000

Material-assembly-group-no: 4644.151.530



4 WG 200(555/5) /  
COUPLING



# Picture

Page 1 from 1

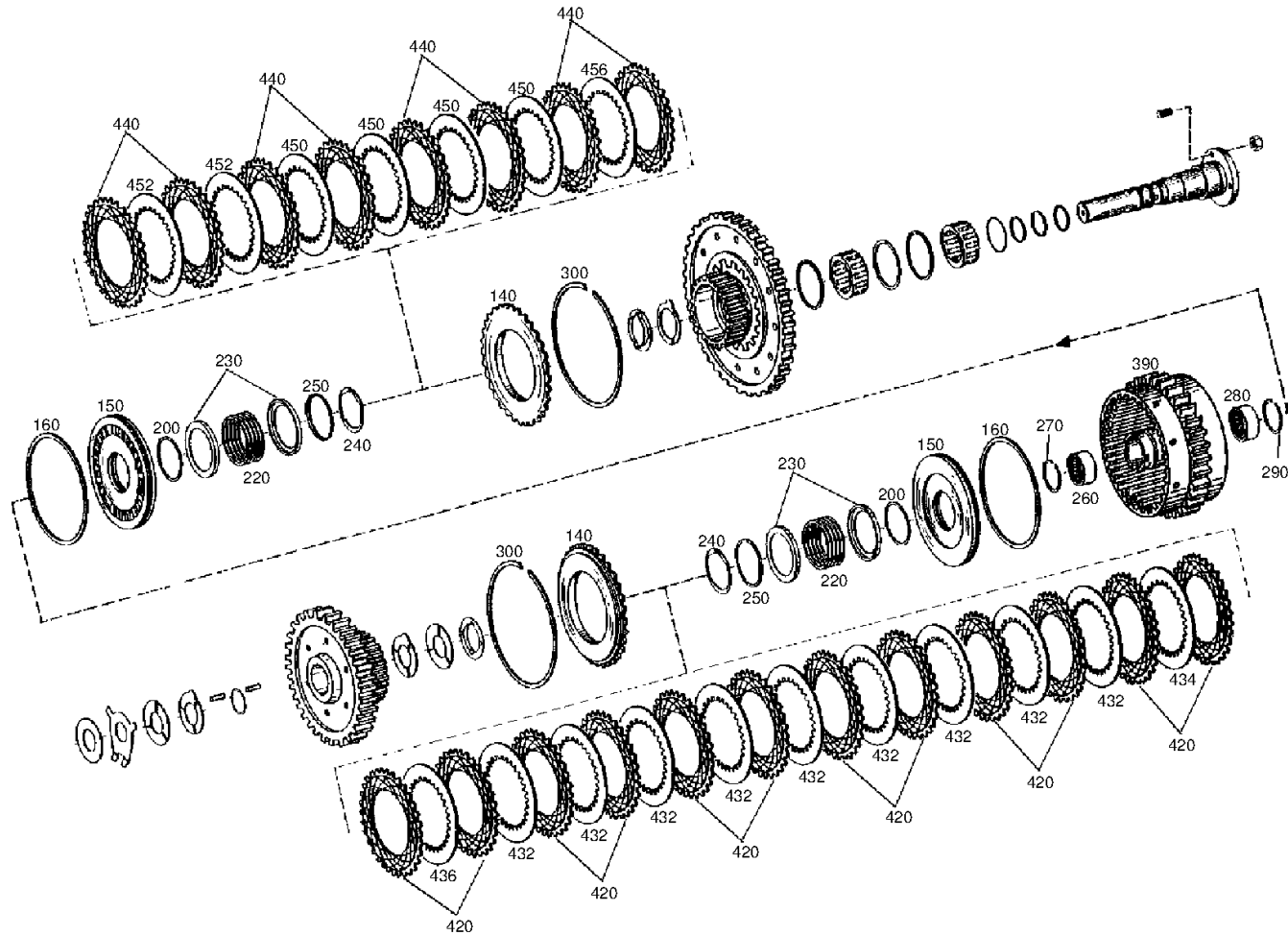
Material number: 4644.024.207

Picture: 464415211500

Material-assembly-group-no: 4644.152.115



4 WG 200(555/5) /  
COUPLING



# Picture

Page 1 from 1

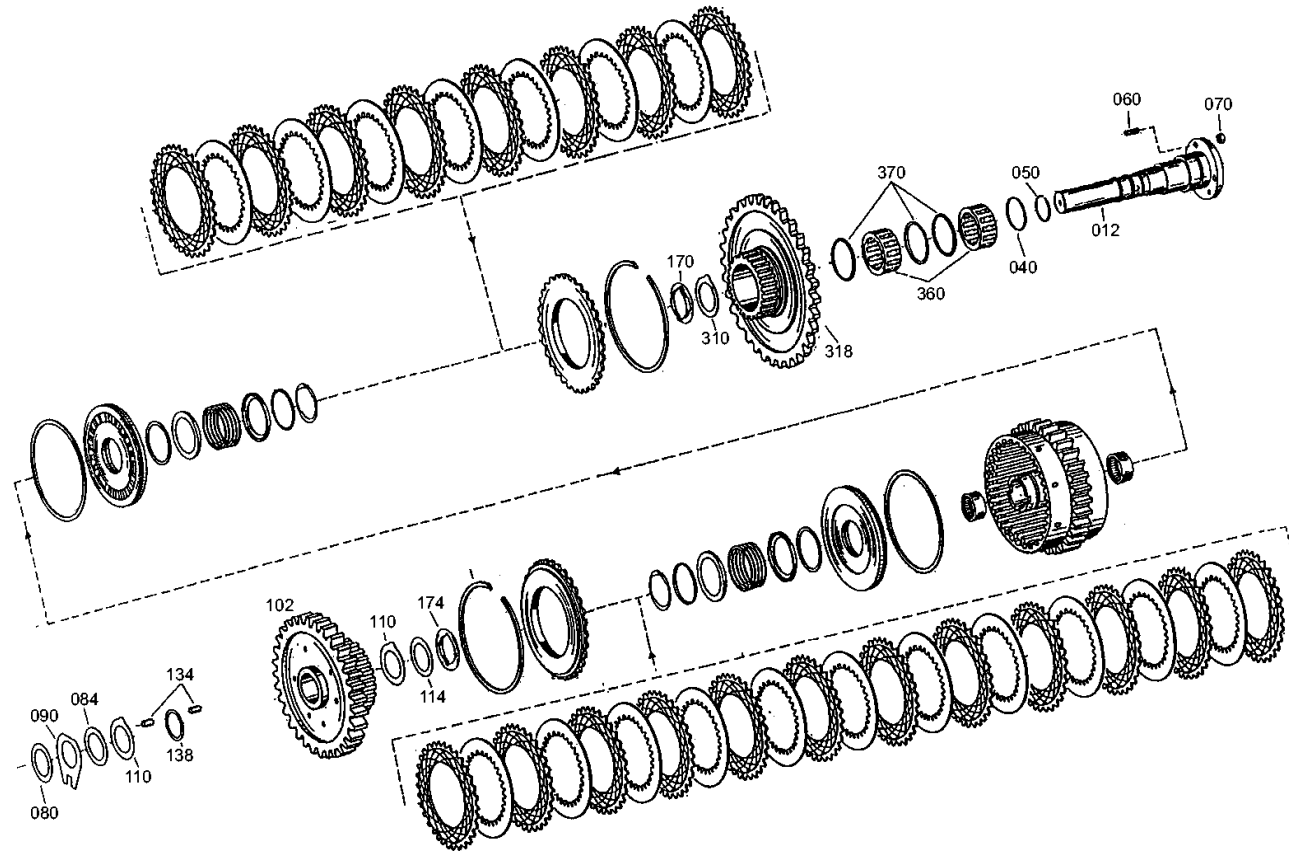
Material number: 4644.024.207

Picture: 464415244800

Material-assembly-group-no: 4644.152.448



4 WG 200(555/5) /  
CLUTCH



# Picture

Page 1 from 1

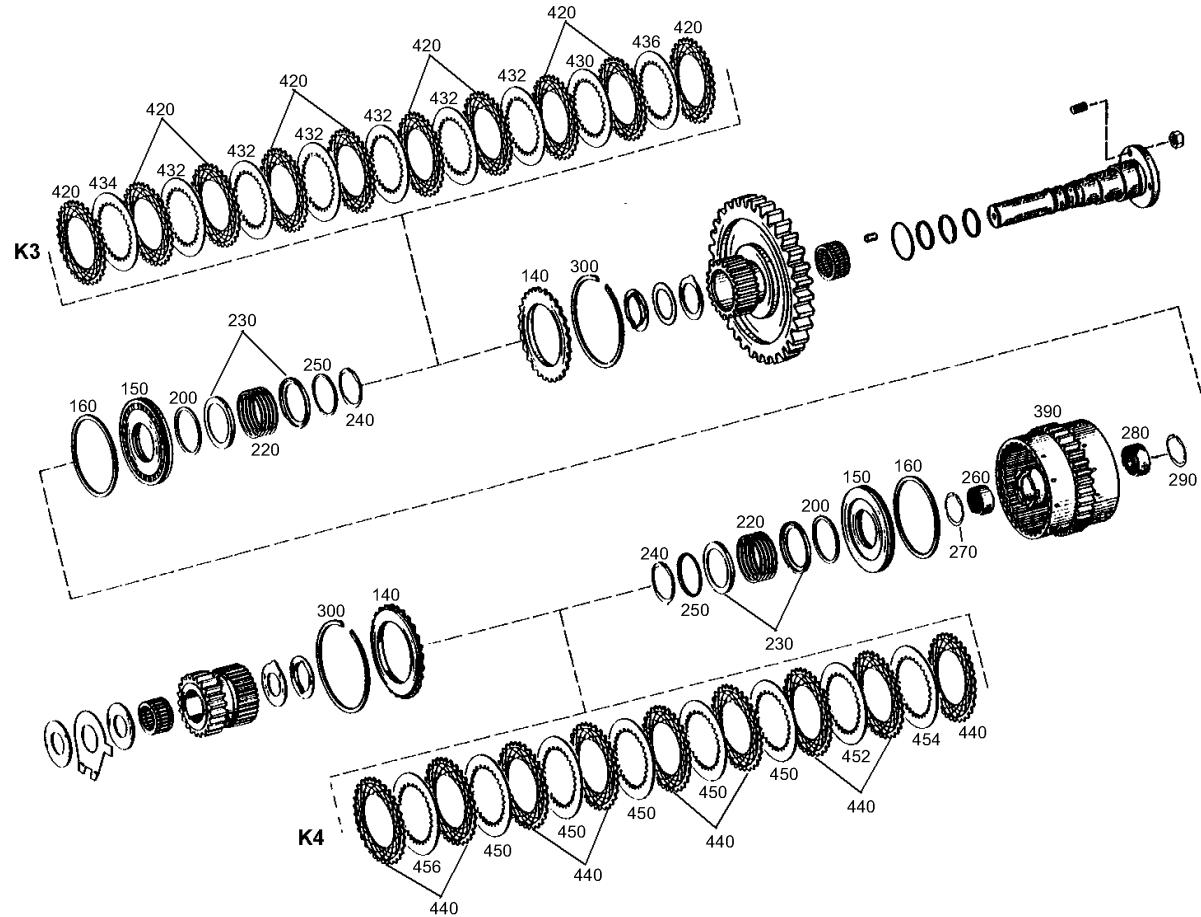
Material number: 4644.024.207

Picture: 464415311100

Material-assembly-group-no: 4644.153.111



4 WG 200(555/5) /  
COUPLING



# Picture

Page 1 from 1

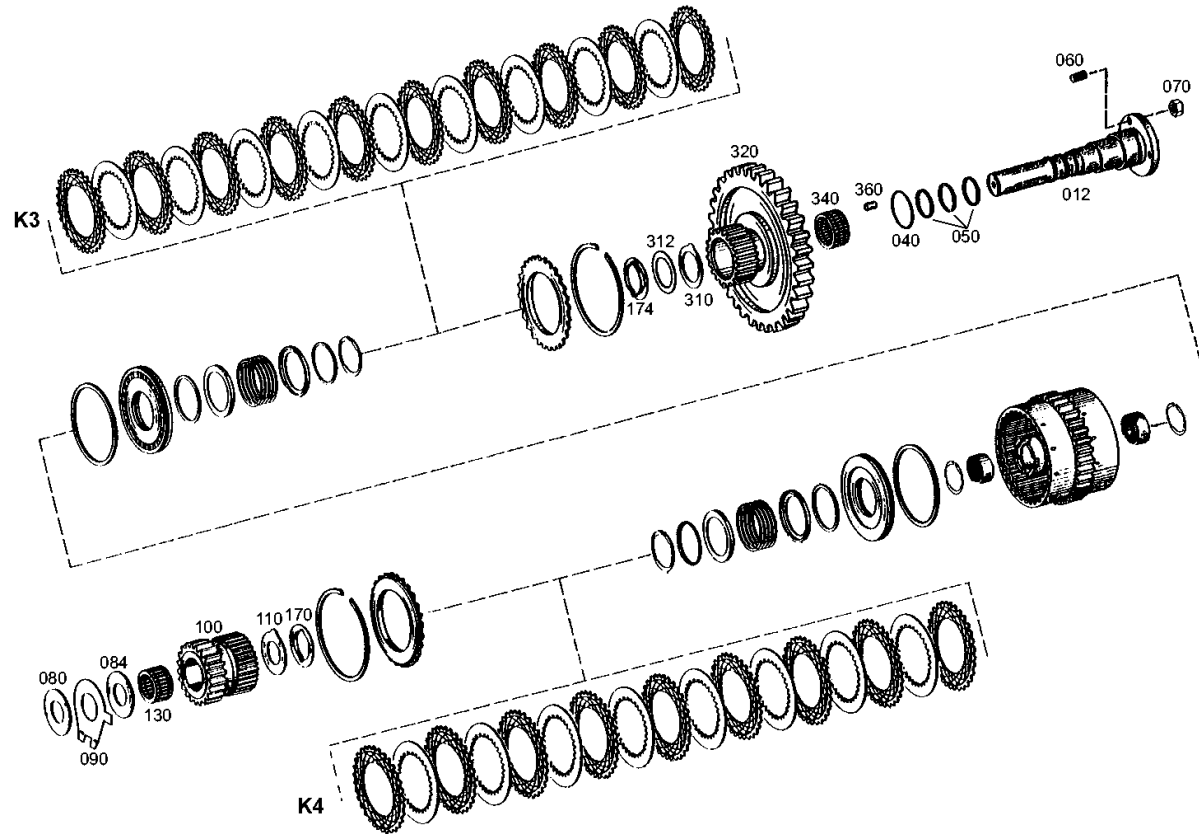
Material number: 4644.024.207

Picture: 464415343400

Material-assembly-group-no: 4644.153.434



4 WG 200(555/5) /  
CLUTCH



# Picture

Page 1 from 1

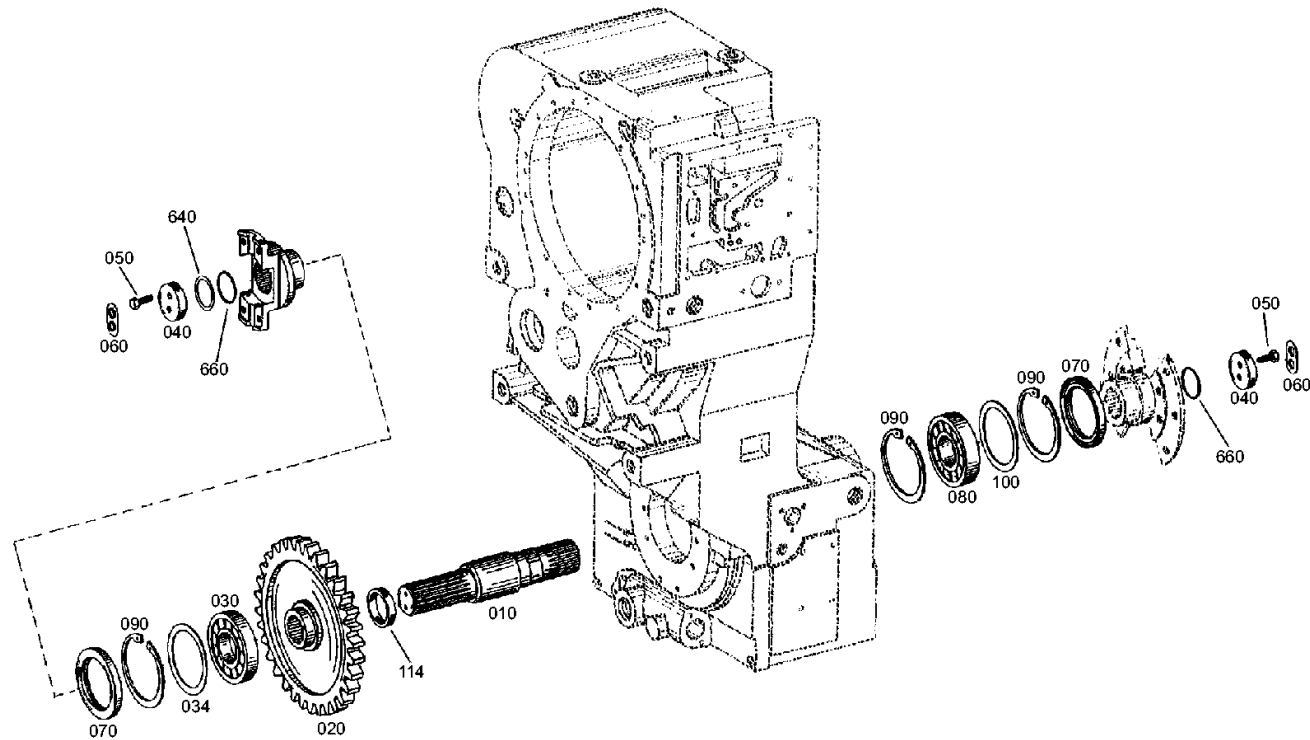
Material number: 4644.024.207

Picture: 464410308400

Material-assembly-group-no: 4644.103.084



4 WG 200(555/5) /  
OUTPUT



# Picture

Page 1 from 1

Material number: 4644.024.207

Picture: 464410342400

Material-assembly-group-no: 4644.103.424



4 WG 200(555/5) /  
OUTPUT



140



# Picture

Page 1 from 1

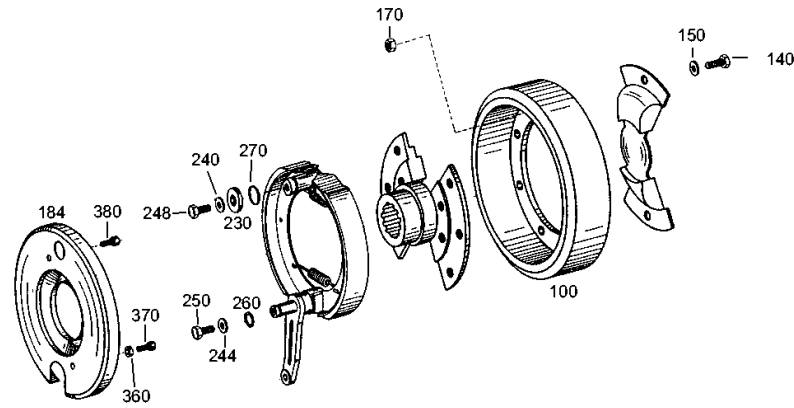
Material number: 4644.024.207

Picture: 464410920102

Material-assembly-group-no: 4644.109.201



4 WG 200(555/5) /  
PARKING BRAKE



# Picture

Page 1 from 1

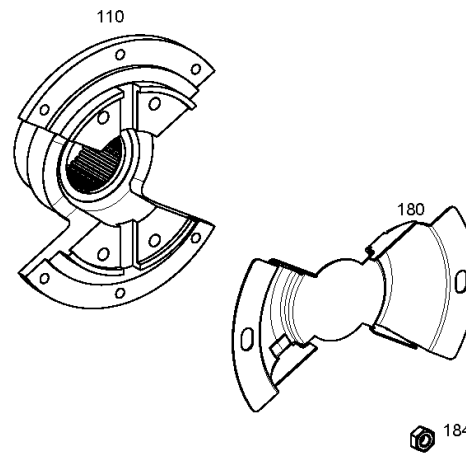
Material number: 4644.024.207

Picture: 464410840300

Material-assembly-group-no: 4644.109.403



4 WG 200(555/5) /  
PARKING BRAKE



# Picture

Page 1 from 1

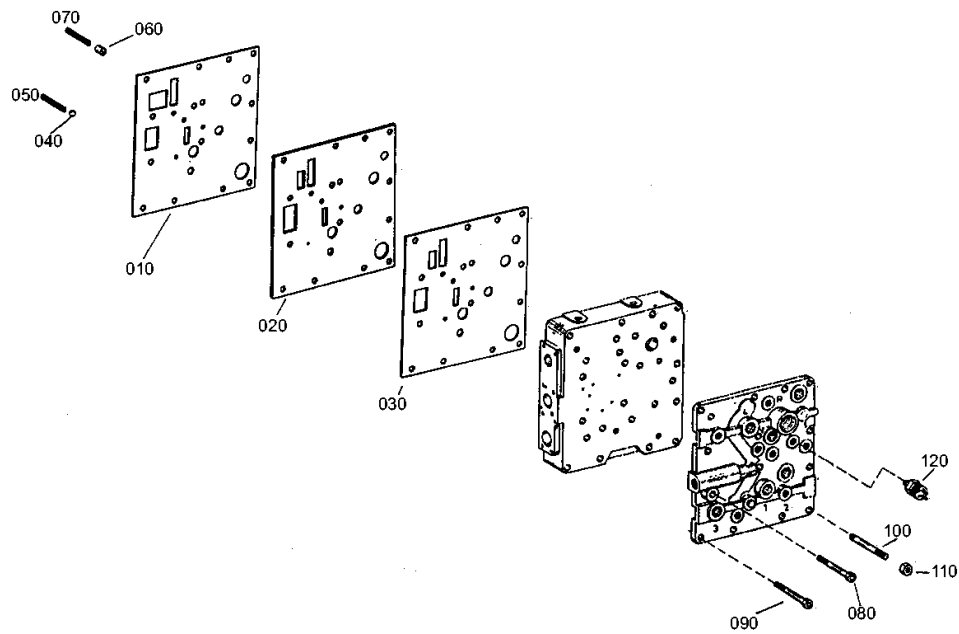
Material number: 4644.024.207

Picture: 464210604420

Material-assembly-group-no: 4642.106.044



4 WG 200(555/5) /  
SHIFT SYSTEM



# Picture

Page 1 from 1

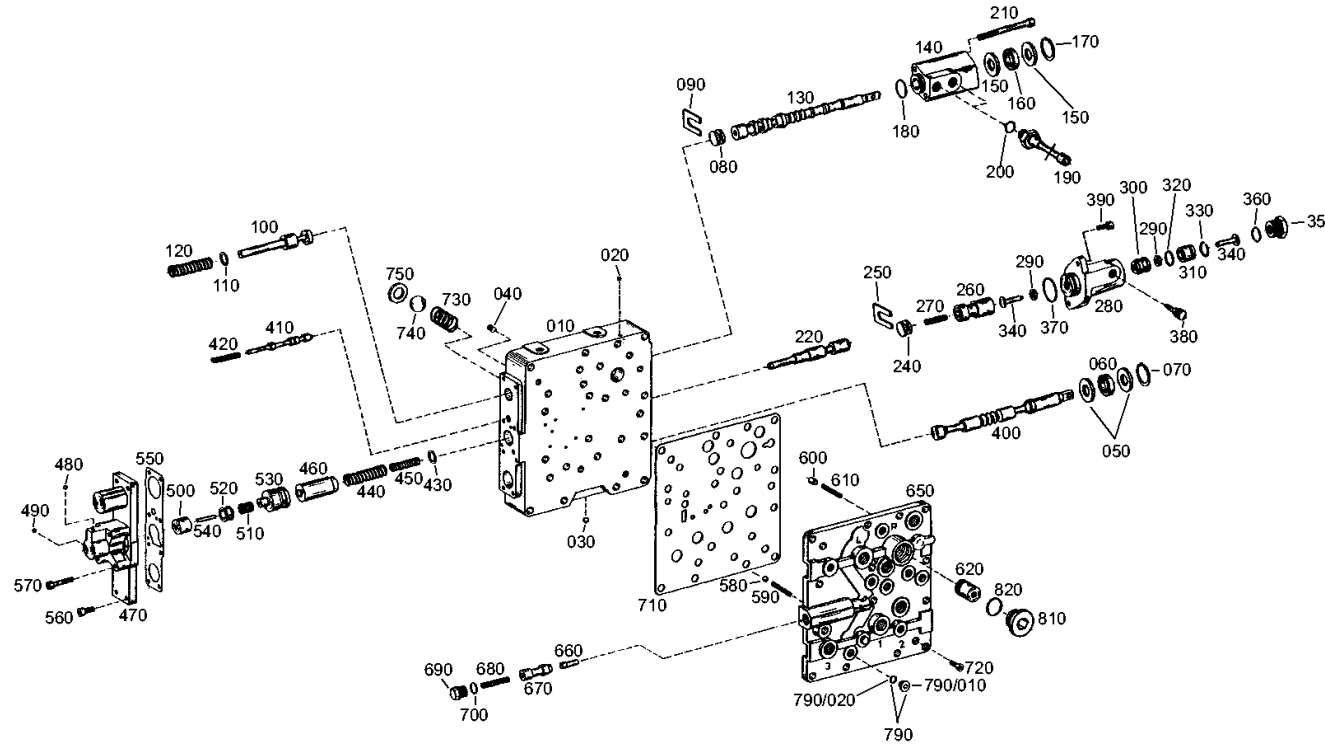
Material number: 4644.024.207

Picture: 464215904120

Material-assembly-group-no: 4642.159.041



4 WG 200(555/5) /  
SHIFT SYSTEM



# Picture

Page 1 from 1

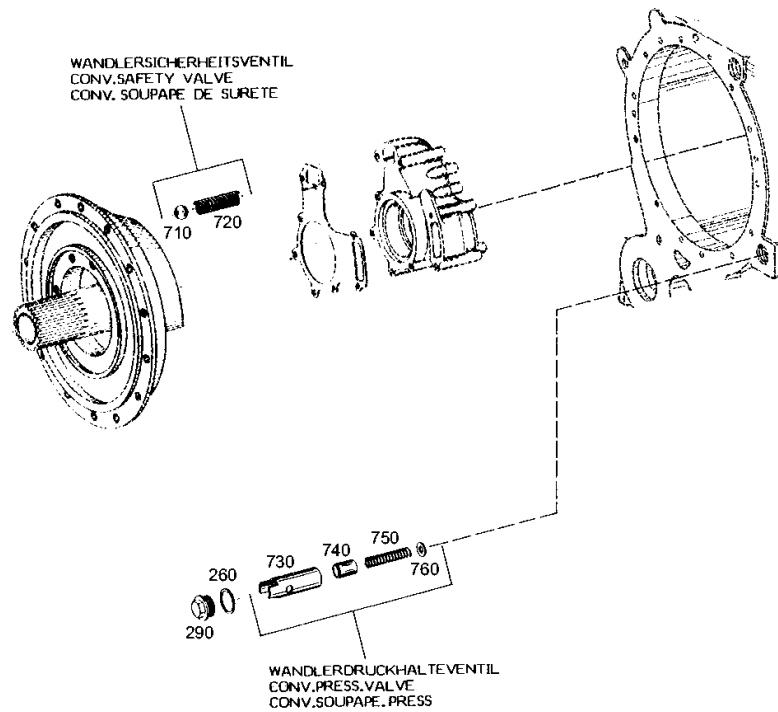
Material number: 4644.024.207

Picture: 464412020100

Material-assembly-group-no: 4644.120.201



4 WG 200(555/5) /  
PRESSURE REGULATOR



# Picture

Page 1 from 1

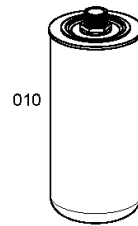
Material number: 4644.024.207

Picture: 464413800100

Material-assembly-group-no: 4644.138.001



4 WG 200(555/5) /  
FILTER



# Picture

Page 1 from 1

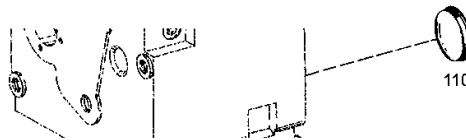
Material number: 4644.024.207

Picture: 464213700500

Material-assembly-group-no: 4642.137.005



4 WG 200(555/5) /  
EMERGENCY STEERING PUMP



# Picture

Page 1 from 1

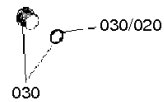
Material number: 4644.024.207

Picture: 464412520200

Material-assembly-group-no: 4644.125.202



4 WG 200(555/5) /  
INDUCTIVE SENSOR





# Picture

Page 1 from 1

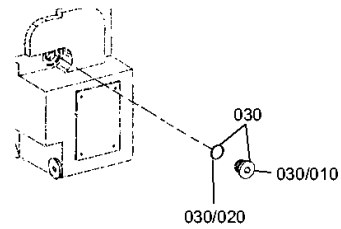
Material number: 4644.024.207

Picture: 464412547100

Material-assembly-group-no: 4644.125.471



4 WG 200(555/5) /  
INDUCTIVE SENSOR



# Picture

Page 1 from 1

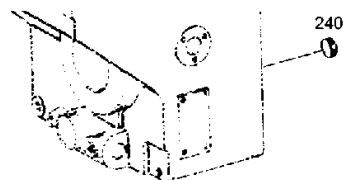
Material number: 4644.024.207

Picture: 464413147000

Material-assembly-group-no: 4644.131.470



4 WG 200(555/5) /  
FILLER NOZZLE



# Picture

Page 1 from 1

Material number: 4644.024.207

Picture: 464412120300

Material-assembly-group-no: 4644.121.203



4 WG 200(555/5) /  
OIL PIPE

