



Spare Parts Catalog

6 WG 200(555/5)

Material number: 4644.026.366

Current date: 17.12.2020

ZF Friedrichshafen AG
Hauptverwaltung
80038 Friedrichshafen
Deutschland

Telefon: +49 7541 77-0

Telefax: +49 7541 77-908000

www.zf.com

zuständiges Werk:
Passau

Notes relating to the spare parts catalog

Setup of the spare parts catalog

- Cover sheet
- Technical Cover (only in SDM print)
- Overview of figures
- Figure
- Associated parts list
- Next figure
- Associated parts list
- ...

Figure and parts list



Overview of figures

Bildtafel Figure	Sachnummer Product number	Benennung (Description)	Technische Info Technical info	Description (Benennung)	Menge Quantity	Einheit Unit
068.08.17	1316.170.001	AUSLEGER	WL	SHIFT TURRET	1	Stk
068.08.06	1316.170.031	DECKEL	WL*H-H *VM	COVER	1	Stk
068.08.14	1316.170.808	DECKEL	WL*AUSL+GEH*H-H*HF160N	COVER	1	Stk
08	1316.170.441	ANSCHLUSSTEILE	WL*NG-VORB*RG-SCHL*168N *BAJONETT	CONNECTING PARTS	1	Stk

The "gap" indicates that there is no separate graphics panel (poster) for this assembly
The parts of this assembly are shown with the same mid-section number on the figure

1 Positions and subpositions

Pos.	Sachnummer Product number	Benennung (Description)	Technische Info Technical info	Description (Benennung)	Menge Quantity	Einheit Unit
0370	1315.201.054	RUECKLAUFBOLZEN	KPL.16S151*SG*L= 79	REV.IDLER SHAFT	1	Stk
/0120	0631.329.293	SPANNSTIFT		SLOT. PIN	1	Stk

Positions marked with "/" are the individual items of a completion
For example: Position 0370 contains a centering pin with the position /0120

2 Combinations with standardized parts

Pos.	Sachnummer Product number	Benennung (Description)	Technische Info Technical info	Description (Benennung)	Menge Quantity	Einheit Unit
0630		VERSCHL.SCHR.		SCREW PLUG	1	Stk
	0636.302.067	VERSCHL.SCHR.		SCREW PLUG	1	Stk
	0634.801.249	DICHTRING	A 26 X 31	SEALING RING	1	Stk

The parts list shows the components included in the combination of standardized parts

3 Depiction of position/item number on the figure and in the parts list

01.620 - on the figure 01 relates to the assembly in which the position is included. Due to program-related reasons, it is shown on the figure.

0620 - in the parts list

Pos.	Sachnummer Product number	Benennung (Description)	Technische Info Technical info	Description (Benennung)	Menge Quantity	Einheit Unit
0620	0732.040.736	DRUCKFEDER		COMPRESSION SPRING	1	Stk

4 *-Positions

Positions marked with an * are optional i.e. inclusion in the parts list is not mandatory.
The following note is shown on the figure

je nach Stücklistenausführung
depending on spec. number
*
suivant la nomenclature
secondo la distinta base

5 Parts, dotted display

Parts with dotted display on the figure are only used for orientation of other parts

Technical Cover

Page 1 from 7



Material number: 4644.026.366

6 WG 200(555/5) /

Pos.	Information	Amendment number
	KUNDE:XUZHOU CHINA	
	DUMP-TRUCK RCD	
	HAUPTSTUECKLISTE: 4644 026 345	
	ANSCHL.PLAN: 6029 701 326()	
	STROMLAUFPL: 6029 701 327()	
	FAHRSCHALTER:6006 700 197()	
	FAHRSCHALTER:6006 622 166()EBZ	
	EINBAU: 6009 654 001 ()	
	DISPLAY: 6007 203 215	
	KABEL DISPLAY: 6029 301 106	
	GEH.DISPLAY: 6038 201 002	
	DISPLAY: 0501 211 422	
	CUSTOMER:	
	IDENT-NO:	
	CUSTOMER-NUMBER:	
	PROJEKT-NR.:3575-1	
	PROJECT-NO.:	
	VEHICLE DATA:	
	VEHICLE DATA:	
	GRADER PY190	
	FAHRZEUGMASSE: LEER: 15,4T	
	VEHICLE WEIGHT: EMPTY.....T0	
	MOTOR: CUMMINS 6CT 8,3-205	
	ENGINE/MAKE/TYPER:	
	MOTORLEISTUNG: P=153 KW BEI N=2200 UPM	
	ENGINE POWER:	
	ENGINE PERFORM.ACC.TO TRACTIVE EFFORT CALCUL.	
	ENGINE PERFORM.ACC.TO TRACTIVE EFFORT CALCUL.	
	DREHMOMENT: T= 860 NM BEI N=1300 UPM	
	INPUT TORQUE:	
	TYRES: 17.5-25	
	TIRES:	
	R.DYN. 0,623 M	



Material number: 4644.026.366

6 WG 200(555/5) /

Pos.	Information	Amendment number
	ACHSUEBERSETZUNG:I A-GES.= 18,00	
	AXLE RATIO: I TOTAL=	
	MAX.SPEED: 40,0 KM/H	
	MAX.SPEED:	
	PRODUCT DESCRIPTION:	
	PRODUCT DESCRIPTION	
	TYP: 6WG-200(555/5)	
	BEVEL SIDE GEAR SPLINE: N 38X1,25	
	FORDING ABILITY: NO	
	WATERPROOF: NO	
	RATIOS TOTAL:	
	RATIOS:	
	FORWARD:	
	FORWARD:	
	1.G=5,991 2.G=3,447 3.G=2,596 4.G=1,494	
	5.G=1,179 6.G=0,678	
	REVERSE:	
	REVERSE:	
	1.G=5,991 2.G=2,596 3.G=1,179	
	HIGH GEARING: YES	
	INPUT:	
	INPUT:	
	DIRECT FLANGE ATTACHMENT: SAE 2	
	DIRECT FLANGE ATTACHMENT	
	FLANGE CONN:	
	FLANGE:	
	OUTPUT:	
	OUTPUT:	
	FLANSCH: LI.MECH.7C*4X1/2ZOLL	
	FLANGE: LEFT	
	FLANGE: RIGHT MECH.7C	
	FLANGE: RIGHT	
	POWER TAKE-OFF(P.T.O):	



Pos.	Information	Amendment number
	P.T.O.:	
	KOAX.MOTORABH.: FL.SAE-B 2/4-L	
	COAX.ENGINE DRIV:FLANGE SAE-B/2/4-HOLE	
	COAX ENGINE DRIV:SPL.SAE-B/16/32 DP/13T	
	COAX.ENGINE DRIV:SPL.SAE-B/16/32DP/13T	
	SEITL.MOTORABH.: FL.SAE B/2-LOCH	
	LATERAL/ENGINE DRIVEN:FL.SAE-B/2-HOLE	
	LATERAL/ENGINE DRIVEN:SP.SAE-B/16/32DP/13T	
	COAX.ENGINE DRIV:SPL.SAE-B/16/32DP/13T	
	REVERSING GEAR DRIVEN: NO	
	REVERSING GEAR DRIVEN: NO	
	TURB.DRIVEN NO	
	TURB.DRIVEN: NO	
	CONTR.MECH.: NO	
	CONTR.MECH.: NO	
	GEAR SELECTION:	
	GEAR SELECTION:	
	CODE: H	
	CODE:	
	ELECTRICAL	
	ELECTRICAL:	
	MOUNTING POSIT.: LATERAL AT THE GEARBOX ABOVE	
	MOUNTING POSIT.:LATERAL AT THE GEARBOX ABOVE	
	VOLTAGE: 24 VOLT	
	VOLTAGE:	
	OPERATING PRES.: 16+2 BAR	
	OPERATING PRESSURE:	
	PRESSURE CONTROL:4,0-13 BAR NO.23	
	PRESSURE CONTROLL:2,5/4-13 BAR NR5	
	CONNENCTION WIRING:CANNON SCREW CONNECTION	
	CONNECTION WIRING:CANNON SCREW CONNECTION	
	OIL INLET TO CONTROL:GEAR BOX	
	OIL INLET TO CONTROL:GEAR BOX	



Pos.	Information	Amendment number
	REPLENISHING OIL:WITH	
	REPLENISHING OIL:WITH	
	CONVERTER LOCK-UP CONTROL: WITHOUT	
	CONVERTER LOCK-UP CONTROL: WITHOUT	
	DOUBLE PRESSURE CONTROL VALVE: WITHOUT	
	DOUBLE PRESSURE CONTROL VALVE: WITHOUT	
	PRESS.CUT-OFF: WITHOUT	
	PRESS.CUT-OFF: WITHOUT	
	SETTING SPECIFICAT.:4644 700 676 IN 467	
	SETTING SPECIFICATION	
	WARNING SWITCH F.OIL PRESSURE:WITH	
	WARNING SWITCH F.OIL PRESSURE:WITH	
	WARNING SWITCH F.OIL TEMPERATURE:WIHOUT	
	WARNING SWITCH F.OIL TEMPERATUR:WITHOUT	
	TEMPERATURGEBER: MIT	
	TEMPERATURSENSOR: WITH	
	GEAR SELECTOR:	
	GEAR SELECTOR:	
	TYP: SG 6-S MIT E-BAUSTEIN	
	BEVEL SIDE GEAR SPLINE: N 38X1,25	
	WIRING: WITH	
	WIRING: WITH	
	INDUCTIVE SENSOR,TURBINE SIDE: WITH	
	INDUCTIVE SENSOR,TURBINE SIDE:WITH	
	INDUCTIVE SENSOR: WITHOUT	
	INDUCTIVE SENSOR,OUTPUT SIDE:WITHOUT	
	PARKING BRAKE:	
	PARKING BRAKE:	
	DRUM BRAKE	
	DRUM BRAKE	
	TYP/GROESSE: 25 3064 D=250X60	
	TYPE/SIZE	
	SPEEDOMETER: WITHOUT	



Pos.	Information	Amendment number
	SPEEDOMETER: WITHOUT	
	OIL DIPSTICK: CONVERTER SIDE; SHORT	
	OIL DIPSTICK: CONVERTER SIDE;SHORT	
	AXLE DISCONNECT: NO	
	AXLE DISCONNECT: WITHOUT	
	ZF-FILTER: INTEGRATED	
	ZF-FILTER: INTEGRATED	
	T-CONVERTER:	
	TORQUE CONVERTER:	
	BEZEICHNUNG: W340/34 H 039	
	MARKING:	
	GRUNDKURVE: 02 G 068 45 L.F.	
	CHARACTERISTICS:	
	ANFAHRWANDLUNG: 2,150	
	START.TORQUE RAT.:	
	STATOR FREEWHEEL:WITHOUT	
	STATOR FREEWHEEL:WITHOUT	
	BREAK FREEWHEEL: WITHOUT	
	BRAKE FREEWHEEL: WITHOUT	
	INERTIA TORQUE: J=0,15 KGM2	
	INERTIA TORQUE:	
	LOCK-UP CLUTCH: WITHOUT	
	LOCK-UP CLUTCH: WITHOUT	
	GROUND DRIV.PUMP: WITHOUT	
	GROUND DRIV.PUMP: WITHOUT	
	SECONDARY PUMP: WITHOUT	
	SECONDARY PUMP: WITHOUT	
	AXLE DIFFERENTIAL: WITHOUT	
	AXLE DIFFERENTIAL: WITHOUT	
	INCH-VALVE: WITHOUT	
	INCH-VALVE: WITHOUT	
	DRAWINGS:	
	DRAWINGS:	



Pos.	Information	Amendment number
	SCHNITT:AEHN:4644 026 350	
	SECT.DRAWING:SIMILAR	
	EINBAU: 4644 626 366()	
	INST.DRAWING:	
	MOTOR-ANBAU: 4644 500 631()	
	TRANSM.DIAGR. SEE INSTALL.DRAWING	
	TRANSM.DIAGRAM:	
	OIL DIAGRAMM:4644 700 627 IN ...626	
	OIL-DIAGRAM:	
	OIL PIPE: 4644 600 013(4)	
	OIL PIPE:	
	WANDLER: 4168 034 032(2)	
	TORQUE CONVERTER:	
	CALCULATIONS:	
	CALCULATIONS:	
	ZUGKRAFT: 4644 711 632	
	TEST SPECIFICATION	
	TEST SPECIFICATION:	
	DRAWING FOR ELECTR.PARTS	
	DRAWING FOR ELECTR.PARTS	
	FAHRSCHALTER: 6006 622 215 ()	
	RANGE SELECTOR:	
	STEUERUNG: 6041 632 015 EBZ	
	CONTROL UNIT:	
	STROMLAUFPLAN 6029 700 426 ()	
	WIRING DIAGRAM:	
	STROMLAUFPLAN 6006 700 583 (2)FS	
	WIRING DIAGRAM:	
	ANSCHL.PLAN: 6029 700 428()	
	CONNECTION DIAGRAM:	
	OIL CAPACITY:	
	OIL CAPACITY:	
	PHOSHATESTER: NO	

Technical Cover

Page 7 from 7

Material number: 4644.026.366



6 WG 200(555/5) /

Pos.	Information	Amendment number
	PHOSPHATESTER: NO	
	MAIN TRANSMISSION: CA. 28,00L	
	MAIN TRANSMISSION:	
	OIL FILLING: NO	
	OIL FILLING: NO	
	OIL GRADE:SPECIFICATION TE ML 03 / TRANSMISSION	
	OIL GRADE:SPECIFICATION TE ML 03 TRANSMISSION	
	GESAMT-TROCKENMASSE: 436KG	
	WEIGHT/MASS (DRY):	
	COLOR: GRAPHITGREY RAL 7024	
	COLOR:	
	PACKING:	
	PACKING:	
	LOCATION OF CABIN:	
	LOCATION OF CABIN:	
	MISCELLANEOUS/REMARKS:	
	MISCELLANEOUS/REMARKS	
	ANBAUMOEGLICHKEIT NOTLENKPUMPE	
	GEARBOX IS PREP.FOR GROUND DRIVE PUMP MOUNTING	
	*	

Assembly group overview

Page 1 from 2



Material number: 4644.026.366

6 WG 200(555/5) /

Graphics	Pos.	Material number	Name	Quantity	Amend. no.	Techn. Info.
464413028400	270	4644.130.284	ENGINE CONNECTION	1		
416603407200	500	4166.034.072	CONVERTER	1		
464410213700	30	4644.102.137	INPUT	1		
464410124900	10	4644.101.249	TRANSMISSION HOUSING	1		
464410149100	20	4644.101.491	TRANSMISSION HOUSING	1		
464410823400	150	4644.108.234	COUNTERSHAFT	1		
464415110450	350	4644.151.104	COUPLING	1		
464415154500	355	4644.151.545	COUPLING	1		
464415213610	360	4644.152.136	COUPLING	1		
464415254600	365	4644.152.546	COUPLING	1		
464415323400	370	4644.153.234	COUPLING	1		
464415350100	375	4644.153.501	COUPLING	1		
464410311100	50	4644.103.111	OUTPUT	1		
464410348100	60	4644.103.481	OUTPUT	1		
464410904001	170	4644.109.040	PARKING BRAKE	1		
464410940400	180	4644.109.404	PARKING BRAKE	1		

Assembly group overview

Page 2 from 2



Material number: 4644.026.366

6 WG 200(555/5) /

Graphics	Pos.	Material number	Name	Quantity	Amend. no.	Techn. Info.
464415408000	380	4644.154.080	POWER TAKE-OFF	1		
464415448100	390	4644.154.481	POWER TAKE-OFF	1		
464415503100	400	4644.155.031	POWER TAKE-OFF	1		
464415547500	410	4644.155.475	POWER TAKE-OFF	1		
464410632500	110	4644.106.325	SHIFT SYSTEM	1		
464415934800	120	4644.159.348	SHIFT SYSTEM	1		
464413800800	330	4644.138.015	FILTER	1		
464412021300	190	4644.120.213	PRESSURE REGULATOR	1		
464412501800	250	4644.125.018	INDUCTIVE SENSOR	1		
464412520200	260	4644.125.202	INDUCTIVE SENSOR	1		
464413702200	310	4644.137.022	EMERGENCY STEERING PUMP	1		
464413107700	290	4644.131.077	FILLER NOZZLE	1		
464413141900	300	4644.131.419	FILLER NOZZLE	1		
464412115030	210	4644.121.150	OIL PIPE	1		
464418304100	510	4644.183.041	LOOSE PARTS	1		
464219990900	490	4642.199.909	LOOSE PARTS	1		

Plant

Page 1 from 1

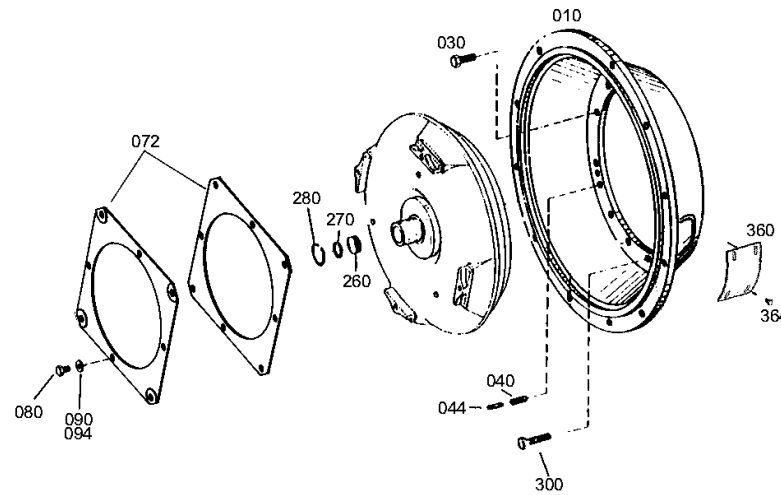
Material number: 4644.026.366

Plant: 464413028400

Material-assembly-group-no: 4644.130.284



6 WG 200(555/5) /
ENGINE CONNECTION



Plant

Page 1 from 1

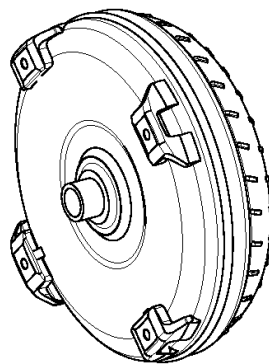
Material number: 4644.026.366

Plant: 416603407200

Material-assembly-group-no: 4166.034.072



6 WG 200(555/5) /
CONVERTER



020

Plant

Page 1 from 1

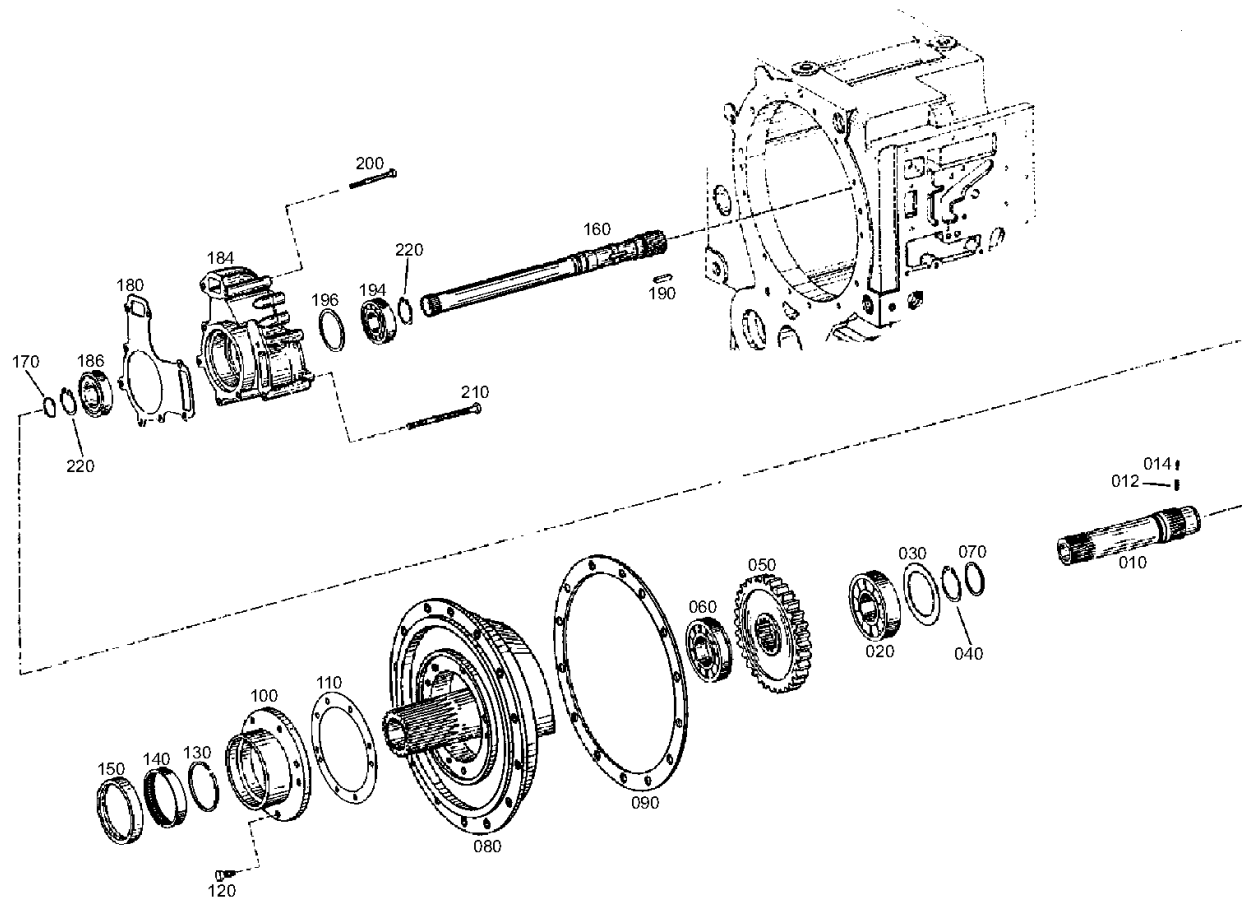
Material number: 4644.026.366

Plant: 464410213700

Material-assembly-group-no: 4644.102.137



6 WG 200(555/5) /
INPUT



Plant

Page 1 from 1

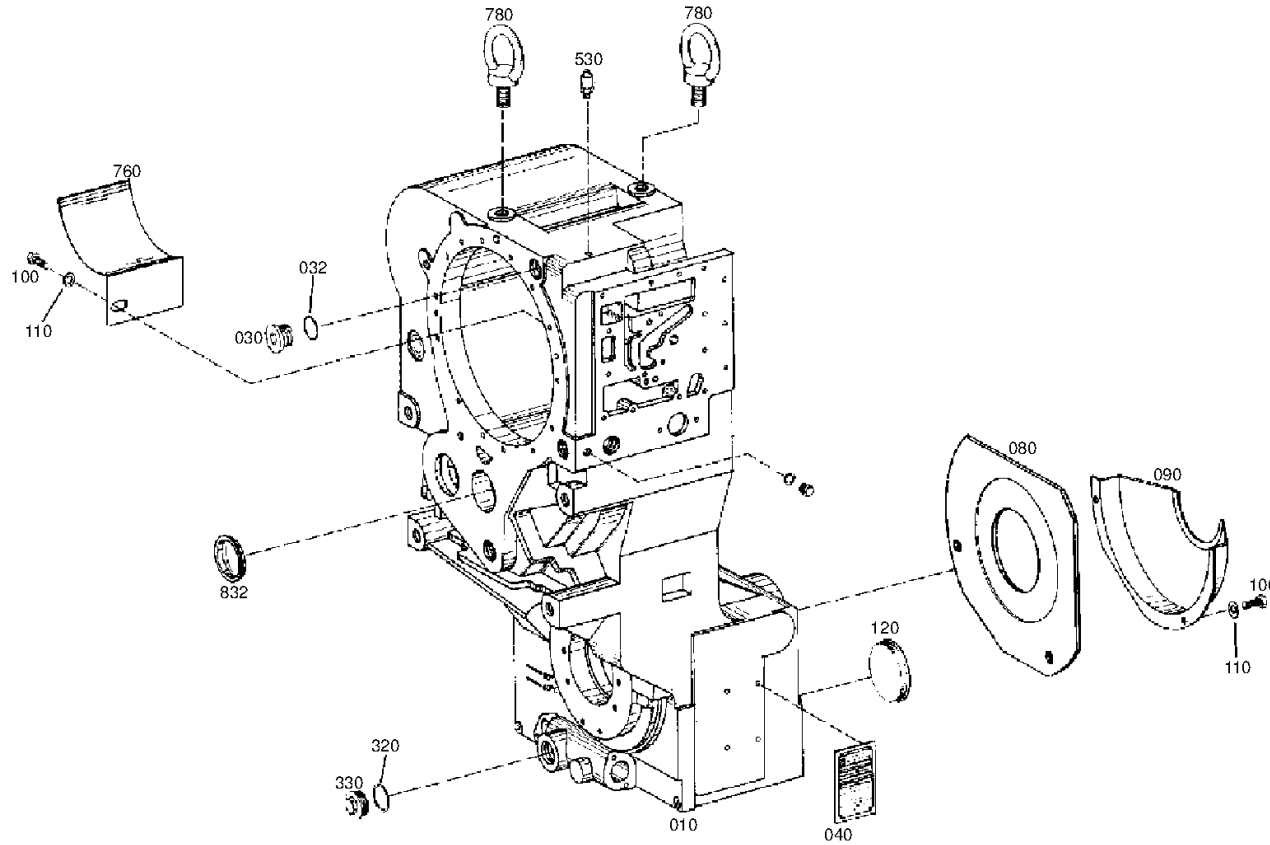
Material number: 4644.026.366

Plant: 464410124900

Material-assembly-group-no: 4644.101.249



6 WG 200(555/5) /
TRANSMISSION HOUSING



Plant

Page 1 from 1

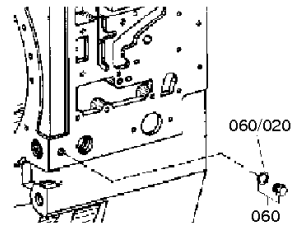
Material number: 4644.026.366

Plant: 464410149100

Material-assembly-group-no: 4644.101.491



6 WG 200(555/5) /
TRANSMISSION HOUSING



Plant

Page 1 from 1

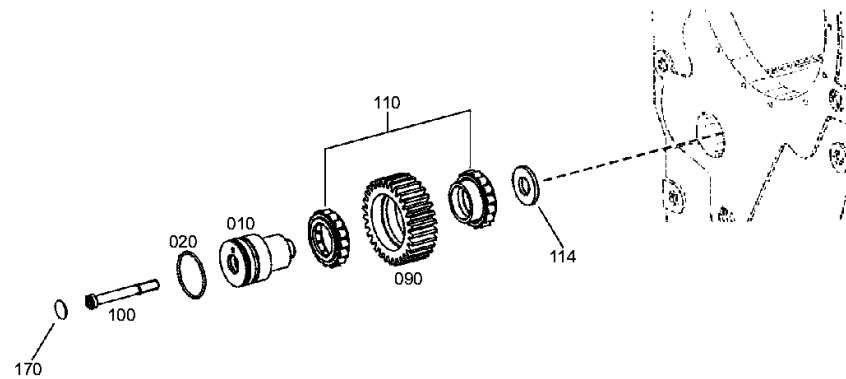
Material number: 4644.026.366

Plant: 464410823400

Material-assembly-group-no: 4644.108.234



6 WG 200(555/5) /
COUNTERSHAFT



Plant

Page 1 from 1

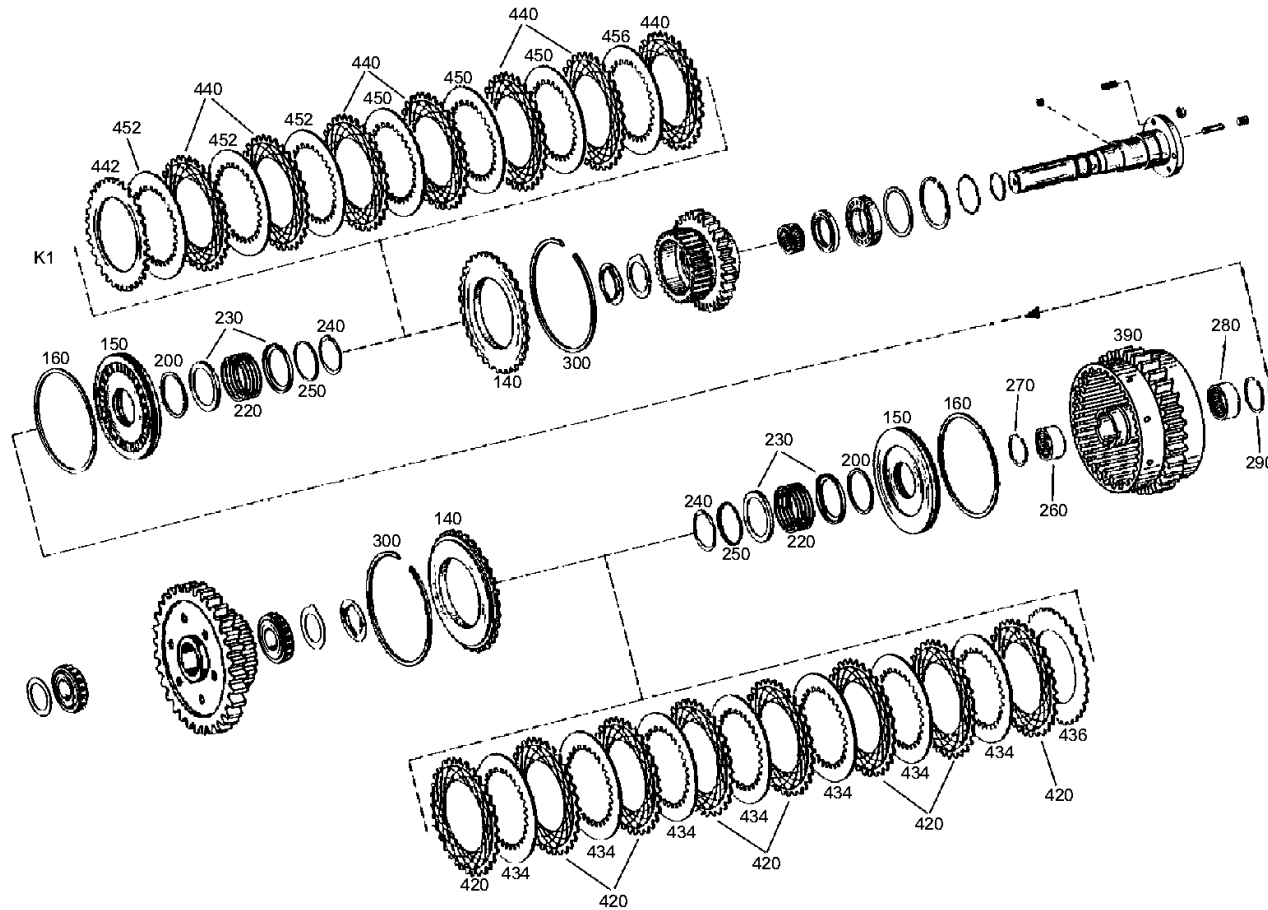
Material number: 4644.026.366

Plant: 464415110450

Material-assembly-group-no: 4644.151.104



6 WG 200(555/5) /
COUPLING



Plant

Page 1 from 1

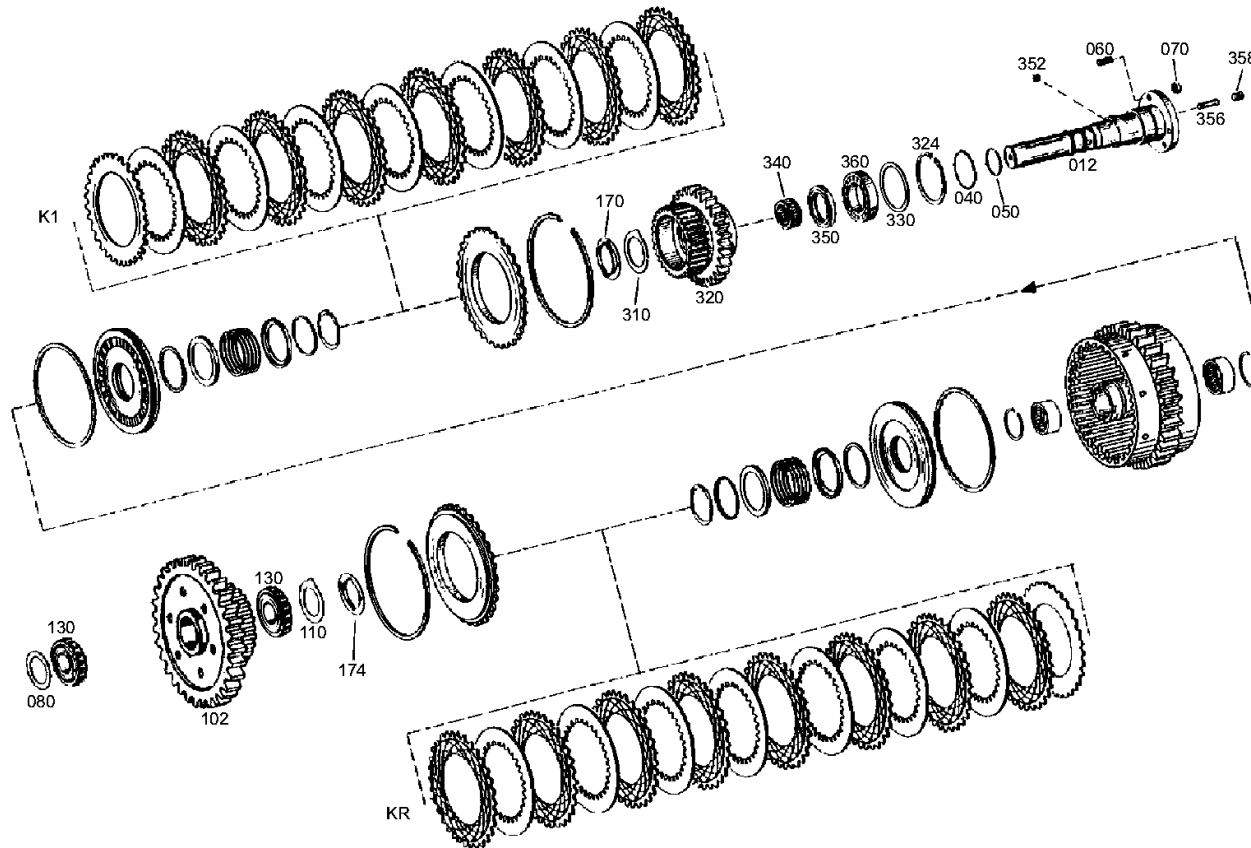
Material number: 4644.026.366

Plant: 464415154500

Material-assembly-group-no: 4644.151.545



6 WG 200(555/5) /
COUPLING



Plant

Page 1 from 1

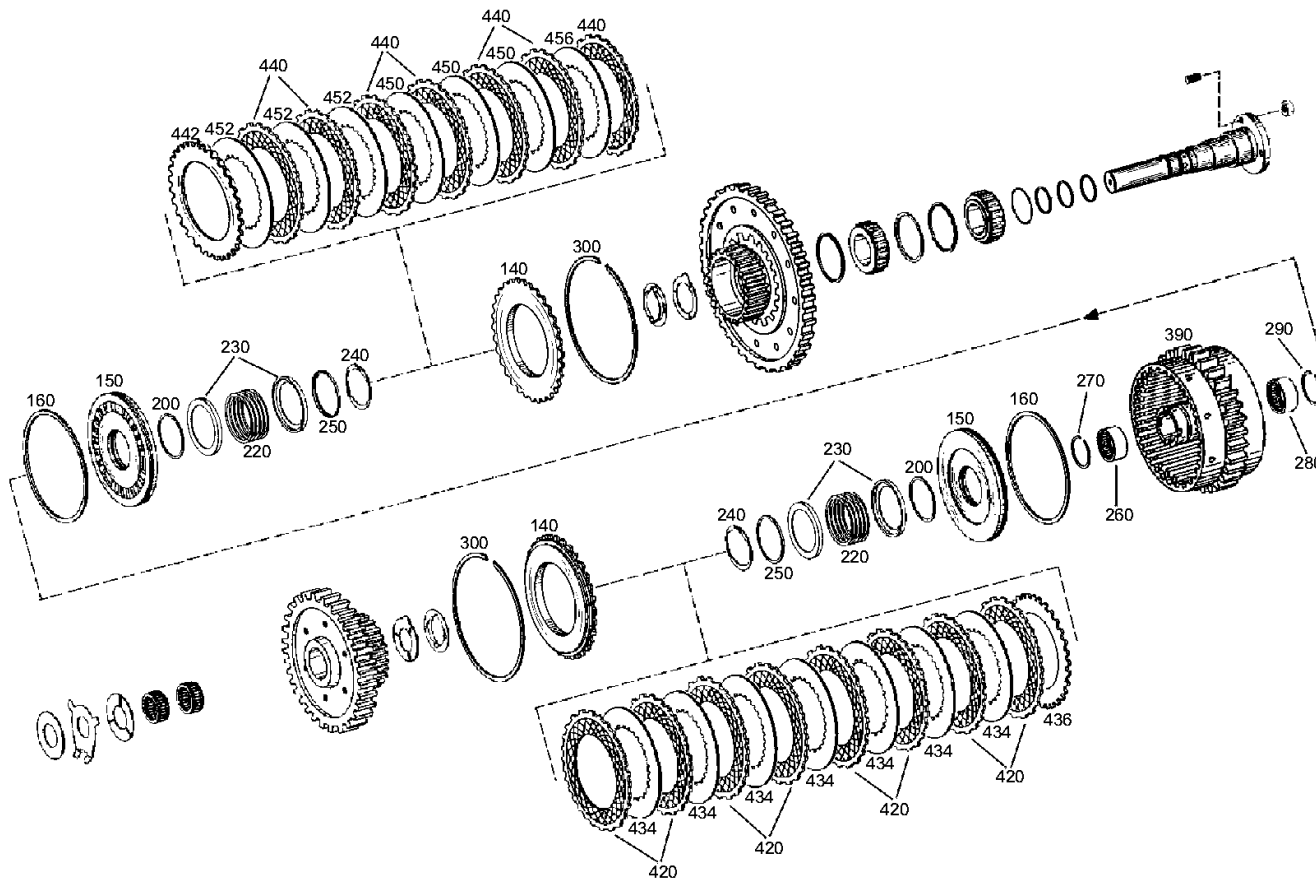
Material number: 4644.026.366

Plant: 464415213610

Material-assembly-group-no: 4644.152.136



6 WG 200(555/5) /
COUPLING



Plant

Page 1 from 1

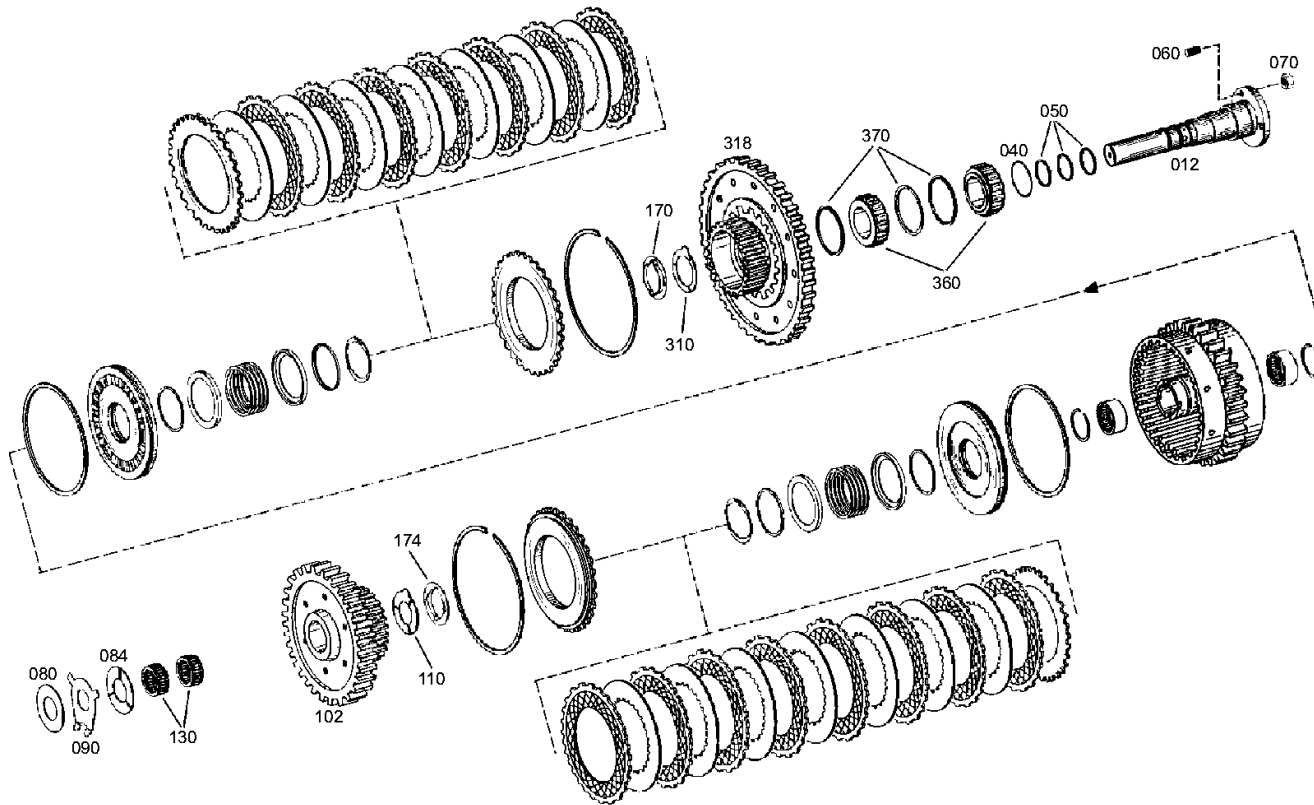
Material number: 4644.026.366

Plant: 464415254600

Material-assembly-group-no: 4644.152.546



6 WG 200(555/5) /
COUPLING



Plant

Page 1 from 1

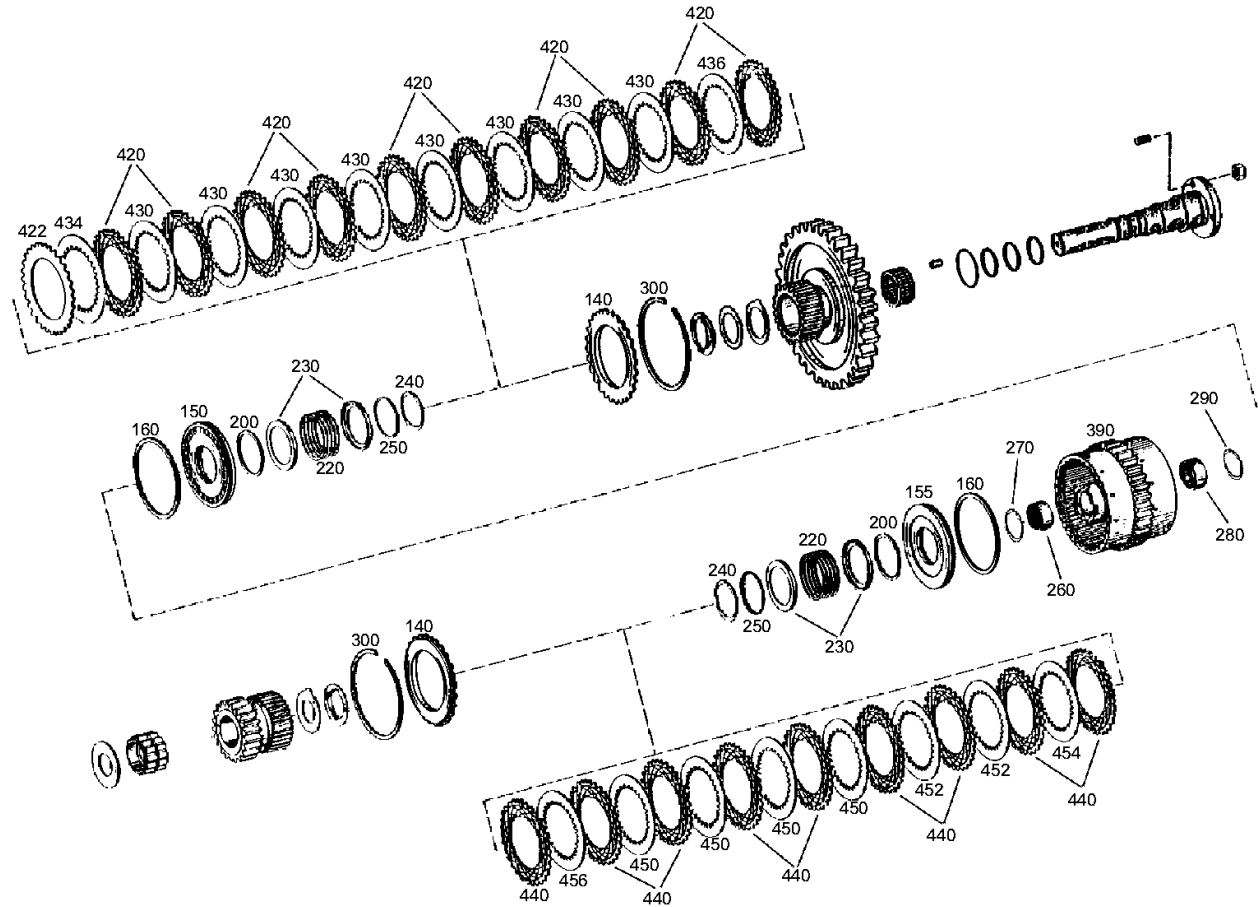
Material number: 4644.026.366

Plant: 464415323400

Material-assembly-group-no: 4644.153.234



6 WG 200(555/5) /
COUPLING



Plant

Page 1 from 1

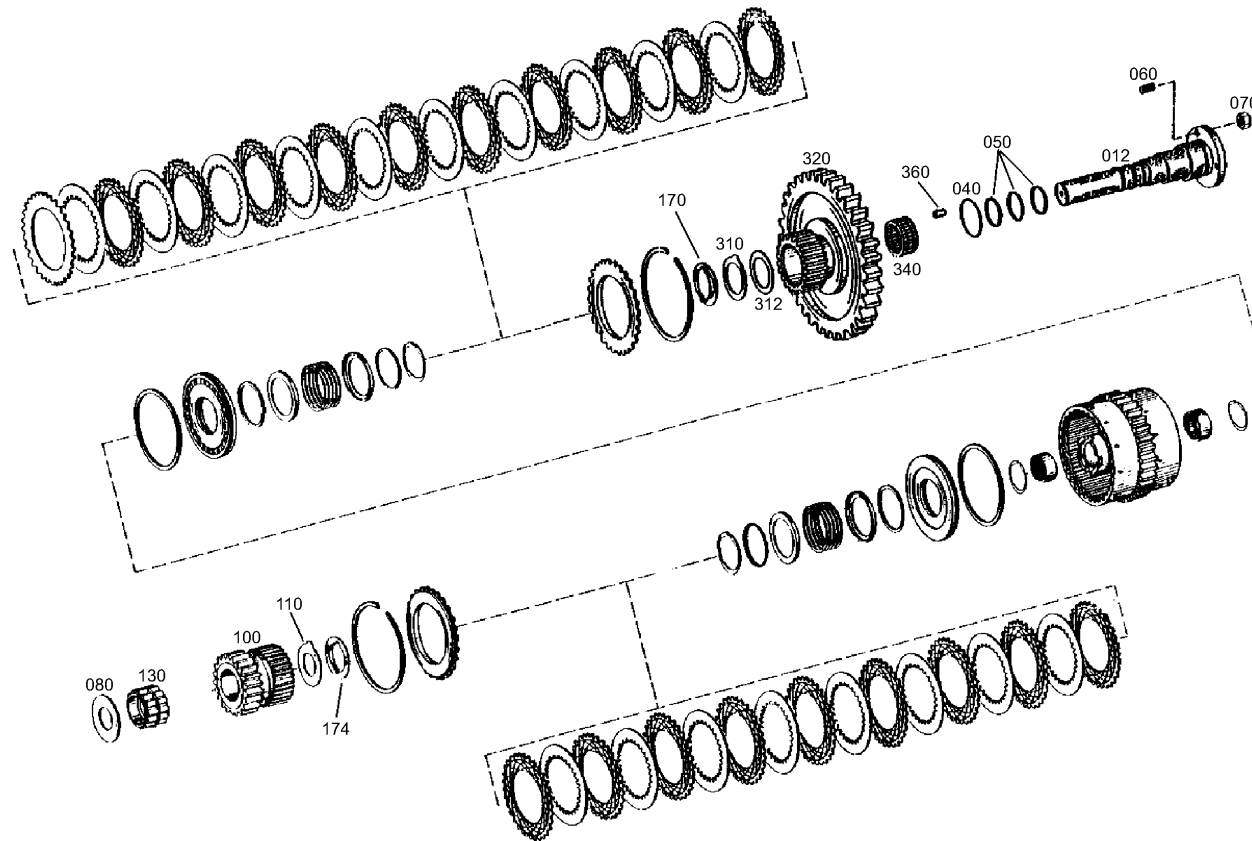
Material number: 4644.026.366

Plant: 464415350100

Material-assembly-group-no: 4644.153.501



6 WG 200(555/5) /
COUPLING



Plant

Page 1 from 1

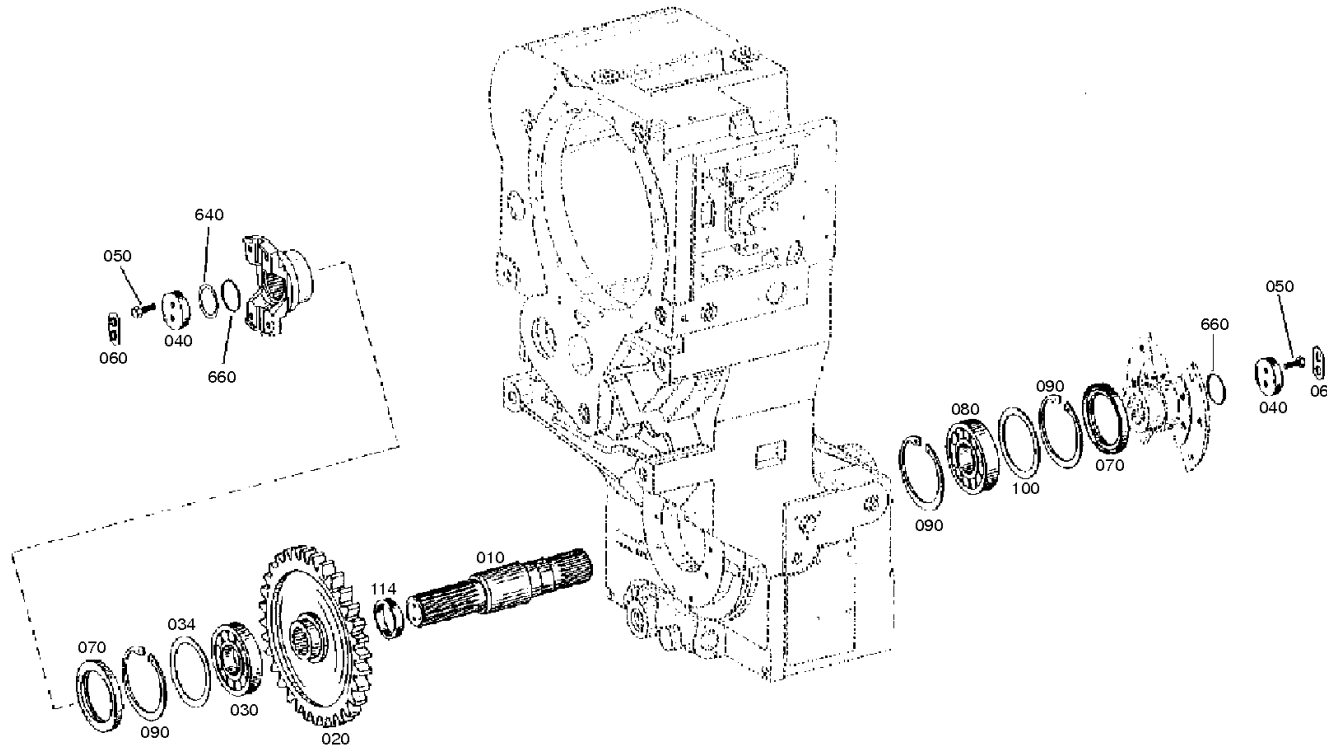
Material number: 4644.026.366

Plant: 464410311100

Material-assembly-group-no: 4644.103.111



6 WG 200(555/5) /
OUTPUT



Plant

Page 1 from 1

Material number: 4644.026.366

Plant: 464410348100

Material-assembly-group-no: 4644.103.481



6 WG 200(555/5) /
OUTPUT



140

Plant

Page 1 from 2

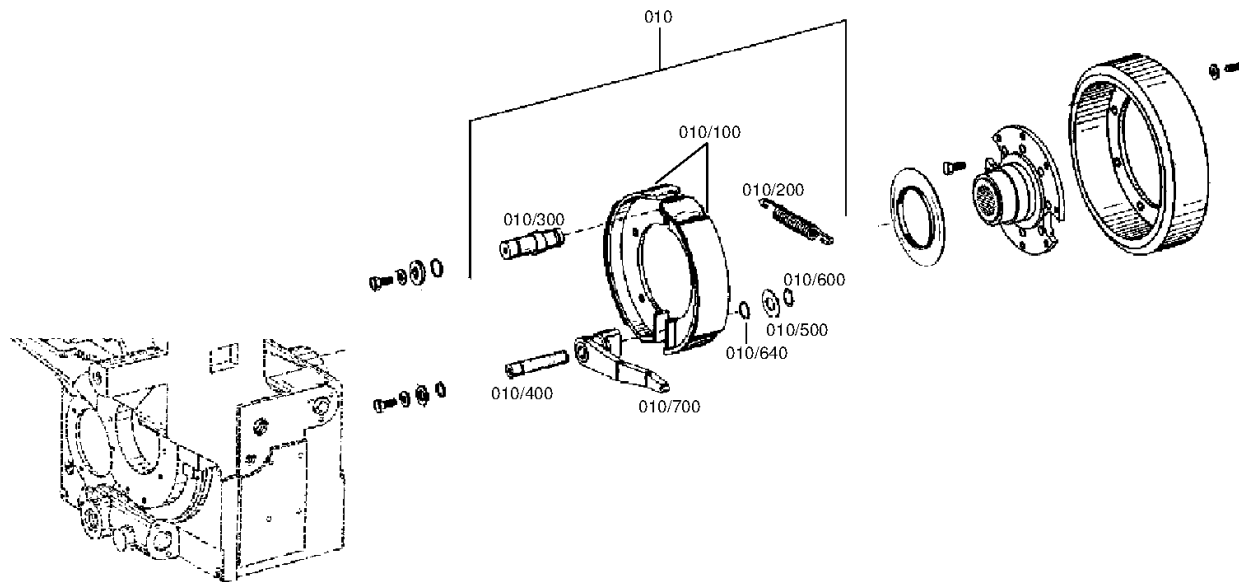
Material number: 4644.026.366

Plant: 464410904001

Material-assembly-group-no: 4644.109.040



6 WG 200(555/5) /
PARKING BRAKE



Plant

Page 2 from 2

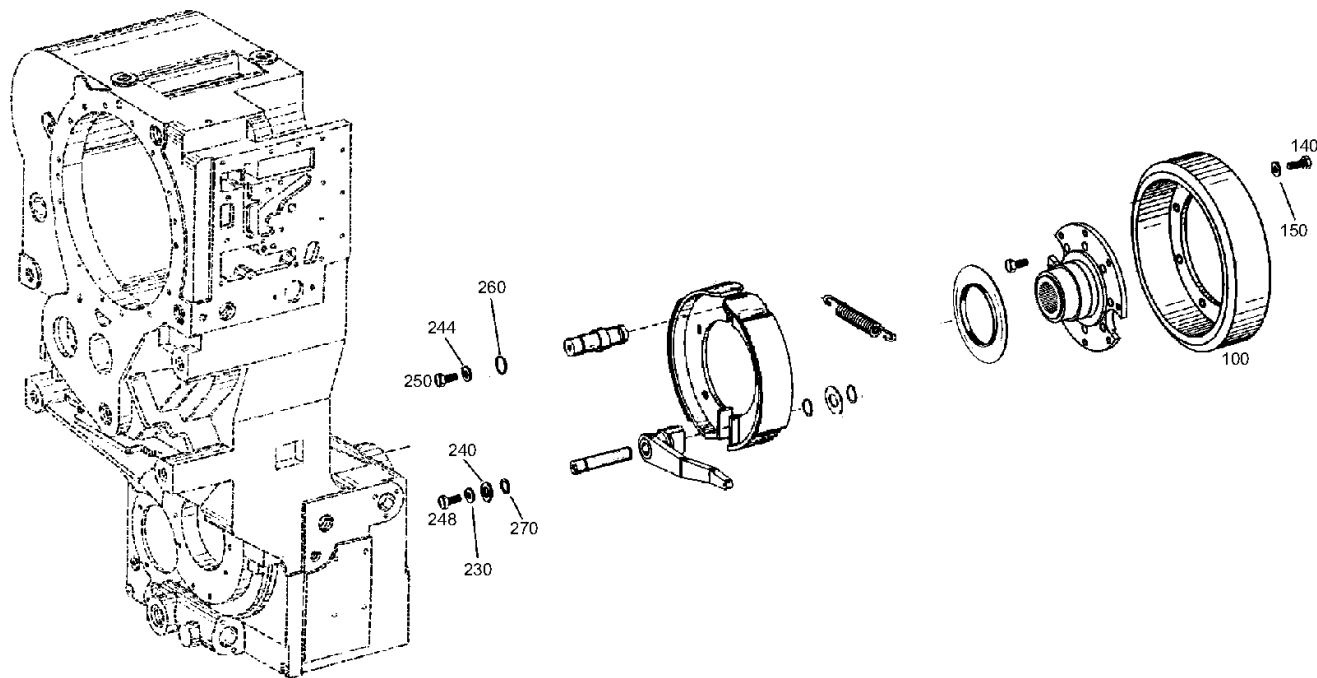
Material number: 4644.026.366

Plant: 464410904002

Material-assembly-group-no: 4644.109.040



6 WG 200(555/5) /
PARKING BRAKE



Plant

Page 1 from 1

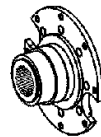
Material number: 4644.026.366

Plant: 464410940400

Material-assembly-group-no: 4644.109.404



6 WG 200(555/5) /
PARKING BRAKE



110

Plant

Page 1 from 1

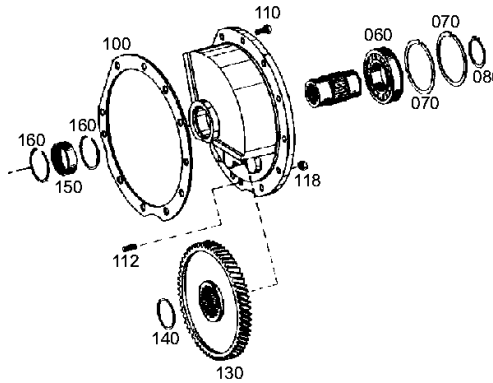
Material number: 4644.026.366

Plant: 464415408000

Material-assembly-group-no: 4644.154.080



6 WG 200(555/5) /
POWER TAKE-OFF



Plant

Page 1 from 1

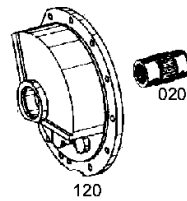
Material number: 4644.026.366

Plant: 464415448100

Material-assembly-group-no: 4644.154.481



6 WG 200(555/5) /
POWER TAKE-OFF



Plant

Page 1 from 1

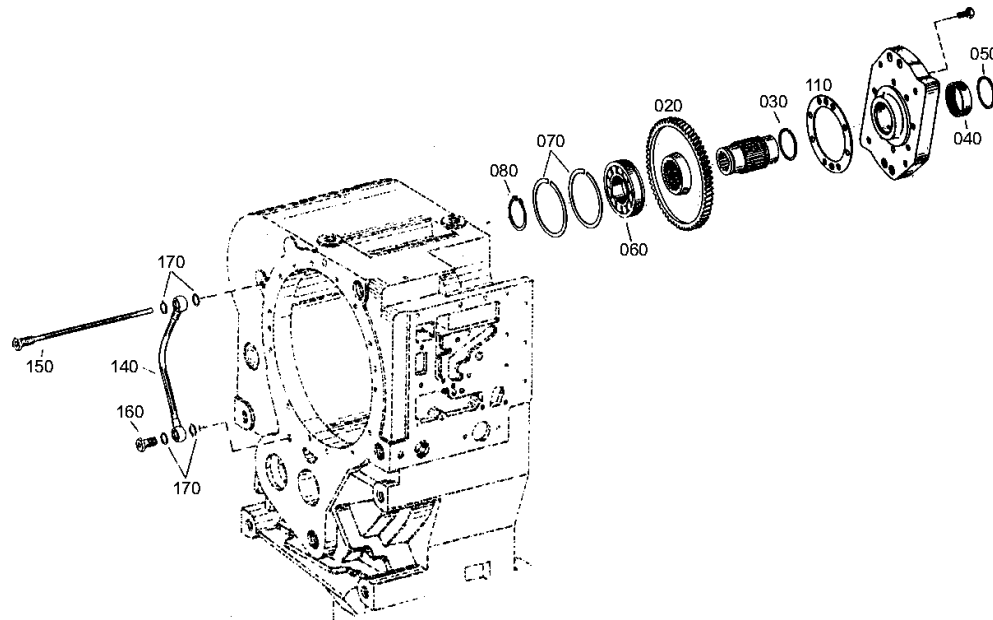
Material number: 4644.026.366

Plant: 464415503100

Material-assembly-group-no: 4644.155.031



6 WG 200(555/5) /
POWER TAKE-OFF



Plant

Page 1 from 1

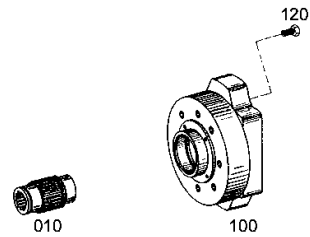
Material number: 4644.026.366

Plant: 464415547500

Material-assembly-group-no: 4644.155.475



6 WG 200(555/5) /
POWER TAKE-OFF



Plant

Page 1 from 1

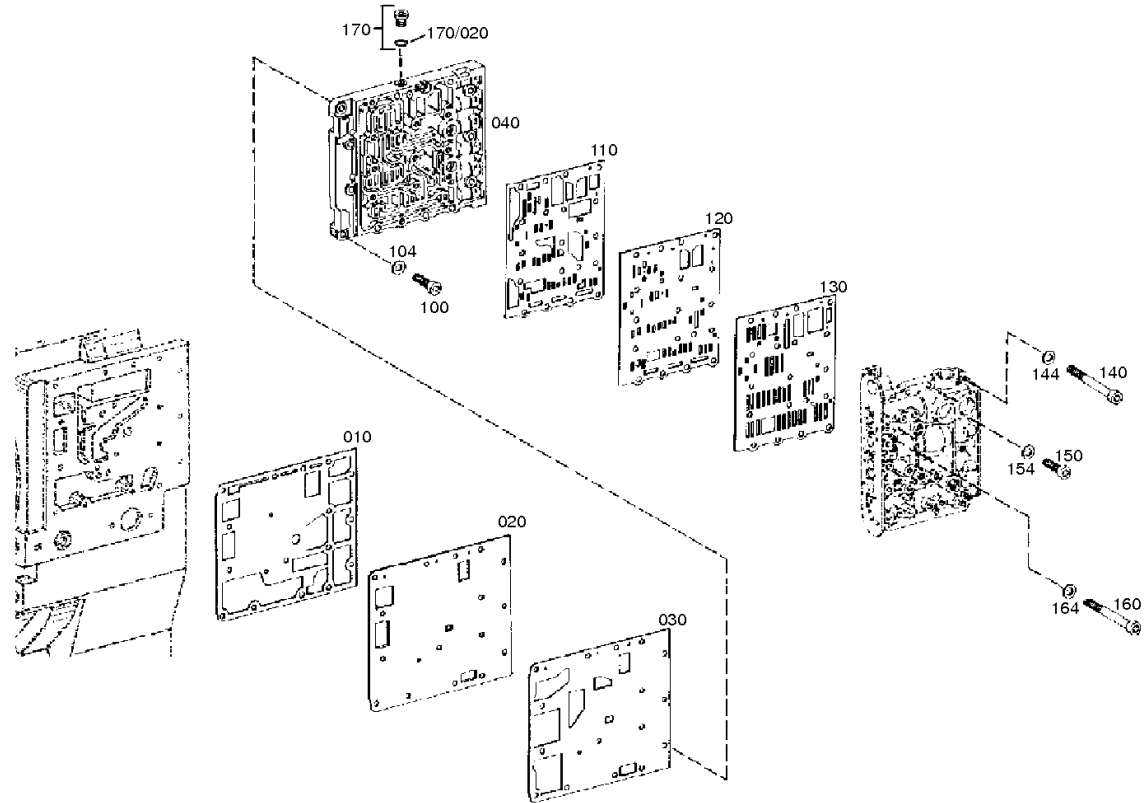
Material number: 4644.026.366

Plant: 464410632500

Material-assembly-group-no: 4644.106.325



6 WG 200(555/5) /
SHIFT SYSTEM



Plant

Page 1 from 1

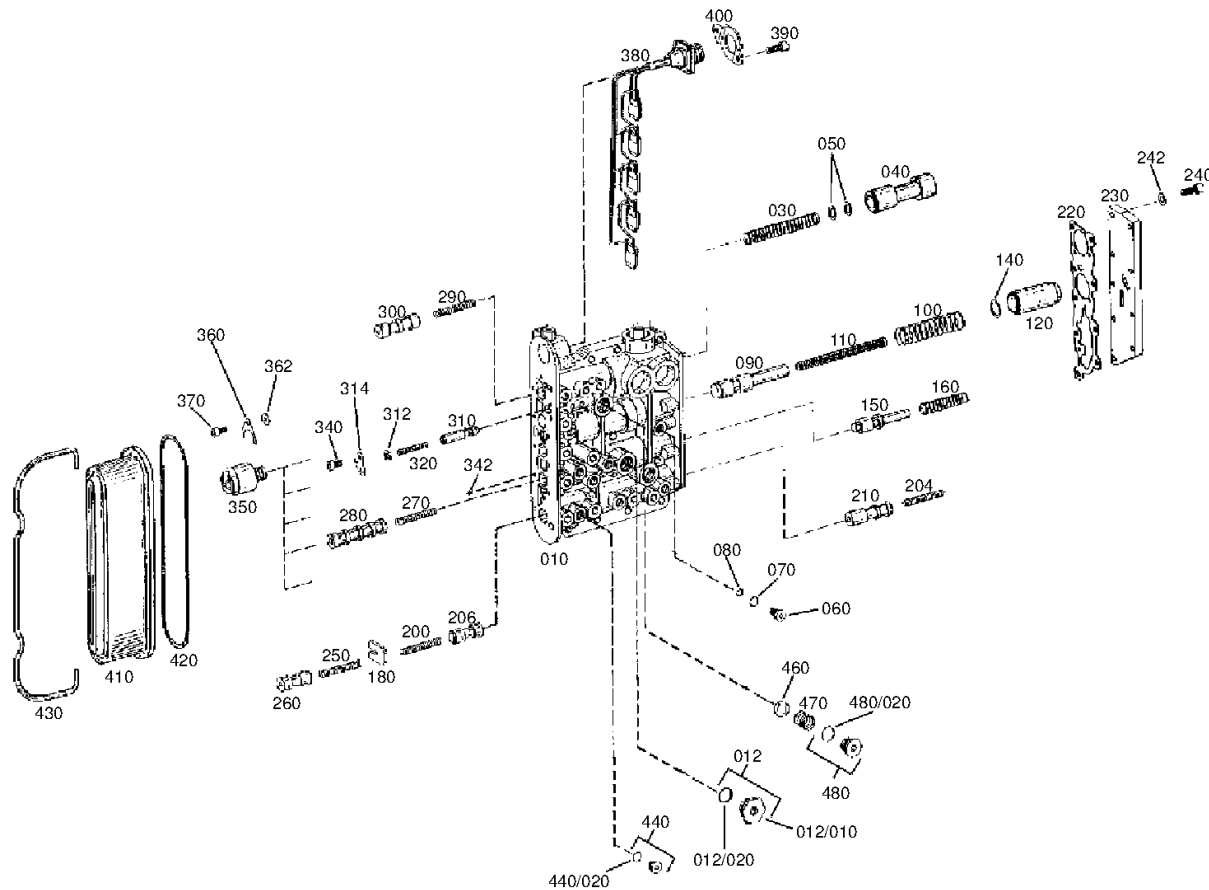
Material number: 4644.026.366

Plant: 464415934800

Material-assembly-group-no: 4644.159.348



6 WG 200(555/5) /
SHIFT SYSTEM



Plant

Page 1 from 1

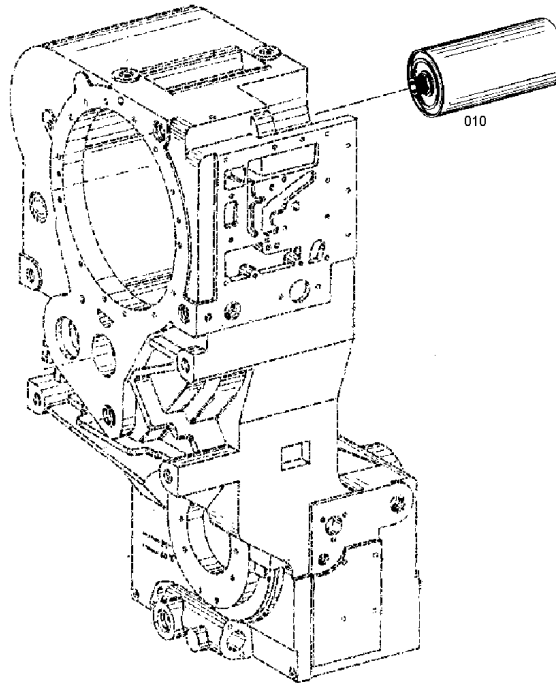
Material number: 4644.026.366

Plant: 464413800800

Material-assembly-group-no: 4644.138.015



6 WG 200(555/5) /
FILTER



Plant

Page 1 from 1

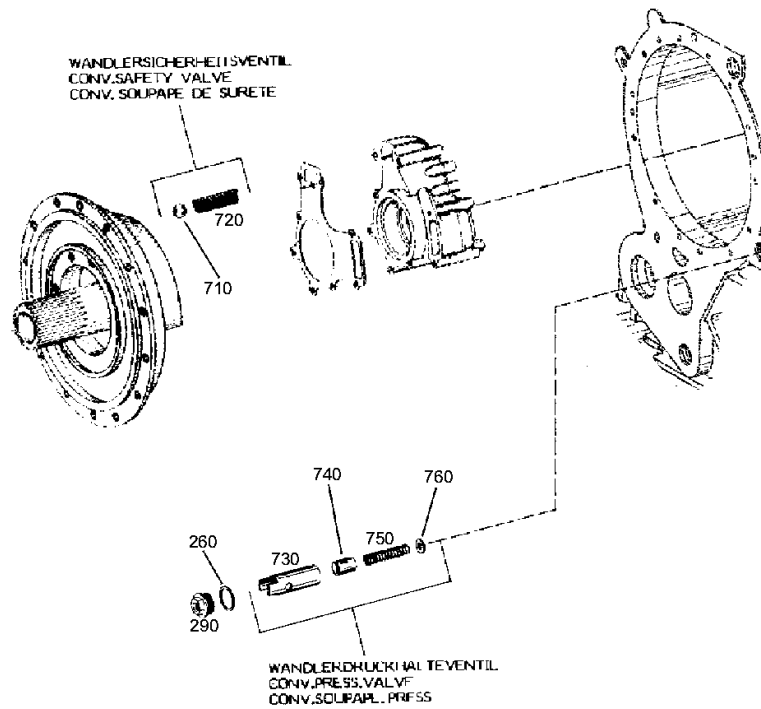
Material number: 4644.026.366

Plant: 464412021300

Material-assembly-group-no: 4644.120.213



6 WG 200(555/5) /
PRESSURE REGULATOR



Plant

Page 1 from 1

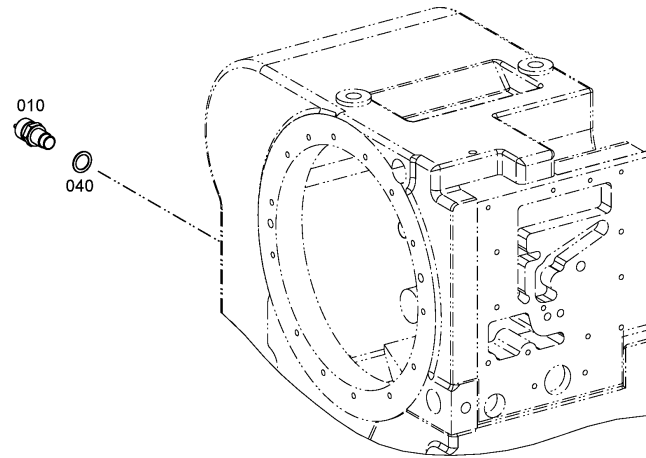
Material number: 4644.026.366

Plant: 464412501800

Material-assembly-group-no: 4644.125.018



6 WG 200(555/5) /
INDUCTIVE SENSOR



Plant

Page 1 from 1

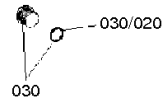
Material number: 4644.026.366

Plant: 464412520200

Material-assembly-group-no: 4644.125.202



6 WG 200(555/5) /
INDUCTIVE SENSOR



Plant

Page 1 from 1

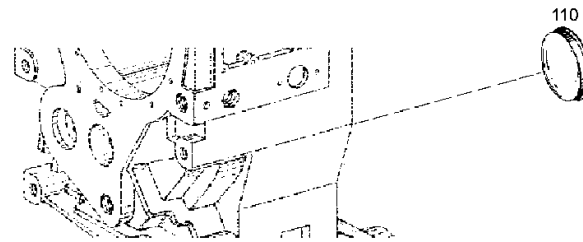
Material number: 4644.026.366

Plant: 464413702200

Material-assembly-group-no: 4644.137.022



6 WG 200(555/5) /
EMERGENCY STEERING PUMP



Plant

Page 1 from 1

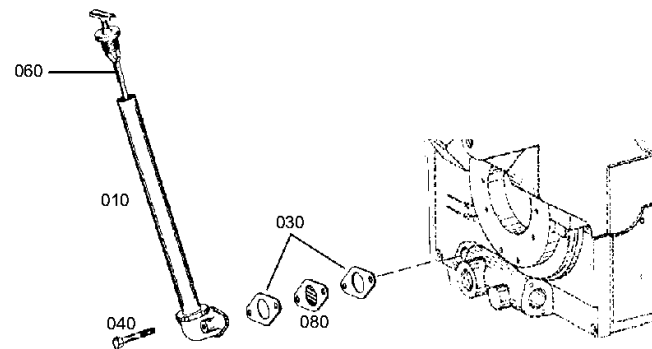
Material number: 4644.026.366

Plant: 464413107700

Material-assembly-group-no: 4644.131.077



6 WG 200(555/5) /
FILLER NOZZLE



Plant

Page 1 from 1

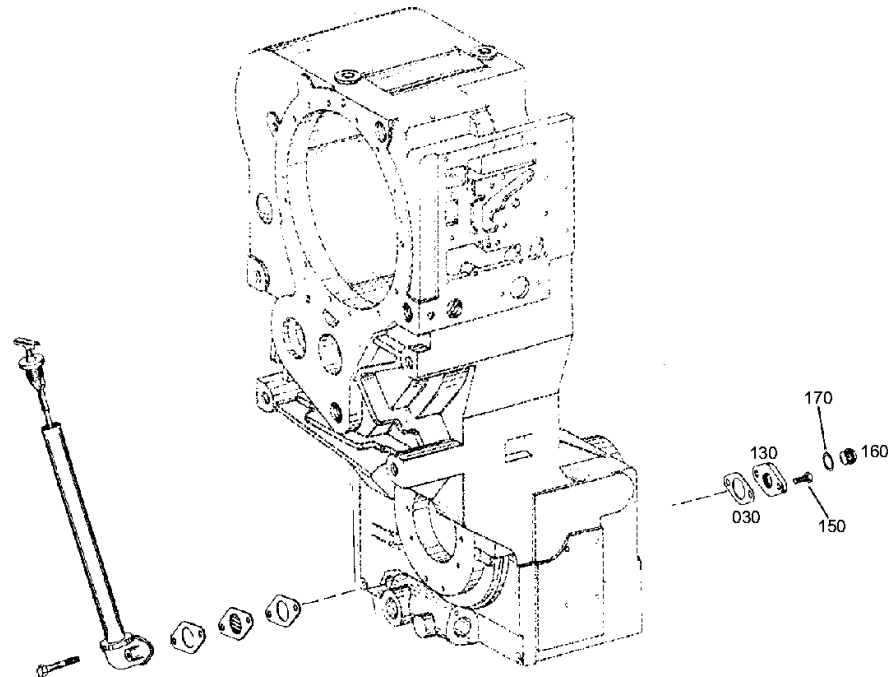
Material number: 4644.026.366

Plant: 464413141900

Material-assembly-group-no: 4644.131.419



6 WG 200(555/5) /
FILLER NOZZLE



Plant

Page 1 from 1

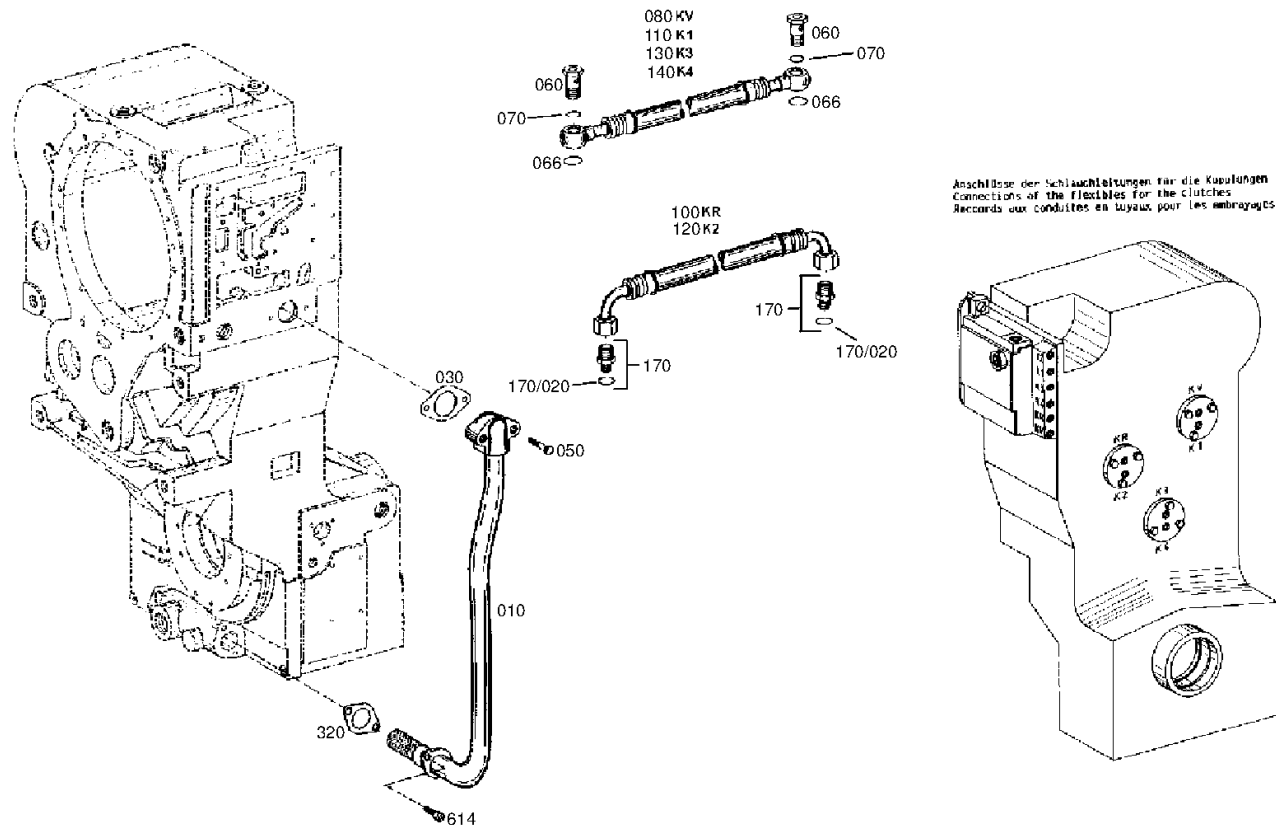
Material number: 4644.026.366

Plant: 464412115030

Material-assembly-group-no: 4644.121.150



6 WG 200(555/5) /
OIL PIPE



Plant

Page 1 from 1

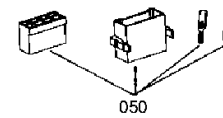
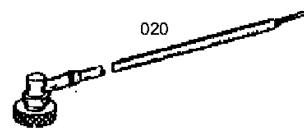
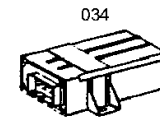
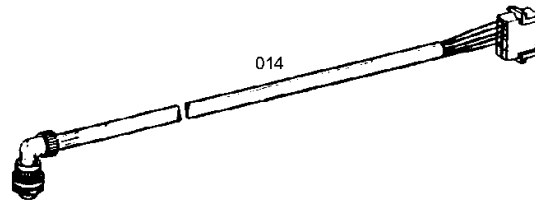
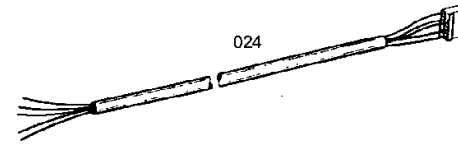
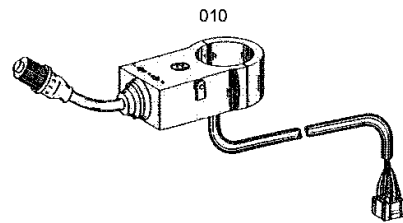
Material number: 4644.026.366

Plant: 464418304100

Material-assembly-group-no: 4644.183.041



6 WG 200(555/5) /
LOOSE PARTS



Plant

Page 1 from 1

Material number: 4644.026.366

Plant: 464219990900

Material-assembly-group-no: 4642.199.909



6 WG 200(555/5) /
LOOSE PARTS

