



Spare Parts Catalog

5 WG 311

Material number: 4646.015.007

Current date: 06.02.2023

ZF Friedrichshafen AG
Hauptverwaltung
80038 Friedrichshafen
Deutschland

Telefon: +49 7541 77-0

Telefax: +49 7541 77-908000

www.zf.com

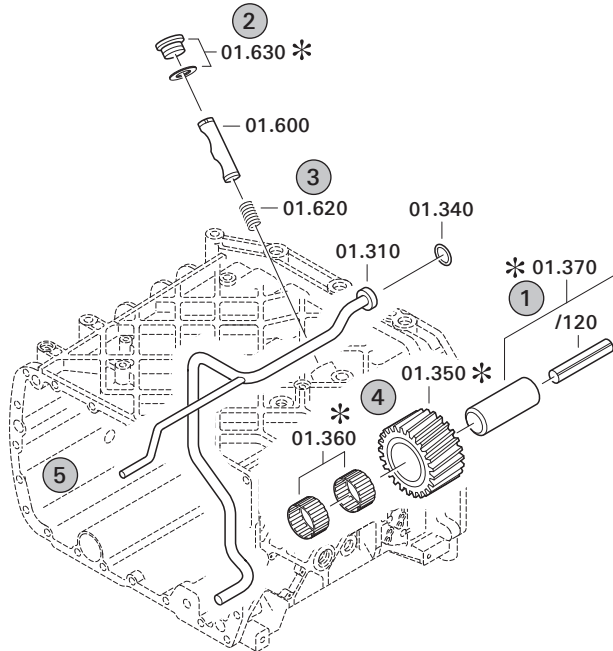
zuständiges Werk:
Passau

Notes relating to the spare parts catalog

Setup of the spare parts catalog

- Cover sheet
- Technical Cover (only in SDM print)
- Overview of figures
- Figure
- Associated parts list
- Next figure
- Associated parts list
- ...

Figure and parts list



Overview of figures

Bildtafel Figure	Sachnummer Product number	Benennung (Description)	Technische Info Technical info	Description (Benennung)	Menge Quantity	Einheit Unit
068.08.17	1316.170.001	AUSLEGER	WL	SHIFT TURRET	1	Stk
068.08.06	1316.170.031	DECKEL	WL*H-H *VM	COVER	1	Stk
068.08.14	1316.170.808	DECKEL	WL*AUSL+GEH*H-H*HF160N	COVER	1	Stk
08	1316.170.441	ANSCHLUSSTEILE	WL*NG-VORB*RG-SCHL*168N *BAJONETT	CONNECTING PARTS	1	Stk

The "gap" indicates that there is no separate graphics panel (poster) for this assembly
The parts of this assembly are shown with the same mid-section number on the figure

1 Positions and subpositions

Pos.	Sachnummer Product number	Benennung (Description)	Technische Info Technical info	Description (Benennung)	Menge Quantity	Einheit Unit
0370	1315.201.054	RUECKLAUFBOLZEN	KPL.16S151*SG*L= 79	REV.IDLER SHAFT	1	Stk
/0120	0631.329.293	SPANNSTIFT		SLOT. PIN	1	Stk

Positions marked with "/" are the individual items of a completion
For example: Position 0370 contains a centering pin with the position /0120

2 Combinations with standardized parts

Pos.	Sachnummer Product number	Benennung (Description)	Technische Info Technical info	Description (Benennung)	Menge Quantity	Einheit Unit
0630		VERSCHL.SCHR.		SCREW PLUG	1	Stk
	0636.302.067	VERSCHL.SCHR.		SCREW PLUG	1	Stk
	0634.801.249	DICHTRING	A 26 X 31	SEALING RING	1	Stk

The parts list shows the components included in the combination of standardized parts

3 Depiction of position/item number on the figure and in the parts list

01.620 - on the figure 01 relates to the assembly in which the position is included. Due to program-related reasons, it is shown on the figure.

0620 - in the parts list

Pos.	Sachnummer Product number	Benennung (Description)	Technische Info Technical info	Description (Benennung)	Menge Quantity	Einheit Unit
0620	0732.040.736	DRUCKFEDER		COMPRESSION SPRING	1	Stk

4 *-Positions

Positions marked with an * are optional i.e. inclusion in the parts list is not mandatory.
The following note is shown on the figure

je nach Stücklistenausführung
depending on spec. number
*
suivant la nomenclature
secondo la distinta base

5 Parts, dotted display

Parts with dotted display on the figure are only used for orientation of other parts

Technical Cover

Page 1 from 4

Material number: 4646.015.007



5 WG 311 /

Pos.	Information	Amendment number
	CUSTOMER: CARGOTEC	
	1.PERFORMANCE CALC.: 4646 709 417	
	VEHICLE DESIGNATION: REACH STEACKER DCG 650-92	
	WEIGHT LOADED: 150,8 TO	
	ENGINE: VOLVO TAD 1172VE TIER4F	
	ENGINE POWER: 285,0 KW	
	SPEED: 1700 RPM	
	INPUT TORQUE: 1900 NM	
	SPEED: 1300 RPM	
	TYRE SIZE: 21,00X35	
	TYRE RADIUS DYN.: 0,930 M	
	AXLE RATIO: 39,270	
	MAX. SPEED: 26,0 KM/H	
	PRODUCT DESCRIPTION: ZF-ERGOPOWER L	
	TRANSMISSION TYPE: 5 WG 311	
	DROP CENTER DISTANCE: 380 MM	
	VEHICLE: REACH STACKER	
	1. GEAR FORWARD: 4,187	
	2. GEAR FORWARD: 2,207	
	3. GEAR FORWARD: 1,421	
	4. GEAR FORWARD: 0,970	
	5. GEAR FORWARD: 0,625	
	1. GEAR REVERSE: 4,187	
	2. GEAR REVERSE: 2,207	
	3. GEAR REVERSE: 0,970	
	NUMBER OF PULSES ENGIN: 60	
	NUMBER OF PULSES TURBINE: 59	
	NUMBER OF PULSES MRK: 91	
	NUMBER OF PULSES OUTPUT: 64	
	SHIFTED CLUTCHES 1G.KV/K1 2G.KV/K2 3G.K4/K2	
	SHIFTED COUPLING 4G.KV/K3 5G.K4/K3	
	CONVERTER: W 370	
	CONVERTER PART NO.: 037 H 057	

Technical Cover

Page 2 from 4

Material number: 4646.015.007



5 WG 311 /

Pos.	Information	Amendment number
	LOCK-UP CLUTCH: WITH	
	STALL TORQUE RATIO: 1,84	
	TORQUE CONVERTER ABSORPTION: 433 NM	
	STATOR FREEWHEEL: WITH	
	ENGINE INPUT: ENGINE MOUNTED WITHOUT DIAPHR.	
	ENGINE: VOLVO	
	HOLE PATTERN CONVERTER HOUSING DIAMETER 11	
	ENGINE-CONNECTION: SAE 1 4646 500 354	
	OUTPUT: WITHOUT OUTPUTFLANGE C/S	
	OUTPUT FLANGE CONVERTER SIDE: WITHOUT	
	OUTPUT PTO SIDE: WITHOUT PARKING BRAKE	
	OUTPUT FLANGE PTO SIDE: D 180 CT 4 X DIA 14 X 52	
	1.POWER TAKE OFF: -----	
	PTO RATIO 1	
	1.PTO FLANGE: SAE C 2 HOLE M16 * 4 HOLE M14	
	DRIVER / PROFILE: SAE C 12/24 DP 14 T	
	3.POWER TAKE OFF: -----	
	RATIO 3 PTO 0,89	
	3.PTO FLANGE: SAE C 2 HOLE M16 * 4 HOLE M14	
	DRIVER / PROFILE: SAE C 12/24 DP 14 T	
	4.POWER TAKE OFF: -----	
	RATIO 4 PTO 0,89	
	4. PTO FLANGE: SAE B 2 HOLE M14	
	DRIVER / PROFILE: SAE B 16/32 DP 13 T	
	VS 3+4 NEBENABTRIEB SONDER	
	GEAR CHANGE CONTROL: ZF-ERGOSHIFT/ PROP VALVE	
	VOLTAGE: 24 VOLT	
	SETTING SPECIFICATION: 4657.700.099	
	SPEED CONTROL: CONNECTION VIA EST	
	OIL LEVEL TUBE: WITHOUT	
	FILTER INSTALLATION: SEPARATE MOUNTED	
	PRES. DROP SWITCH: CLOSING SWITCH	
	ADAPTER WITHOUT	

Technical Cover

Page 3 from 4

Material number: 4646.015.007



5 WG 311 /

Pos.	Information	Amendment number
	EMERGENCY STEERING PUMP: WITHOUT	
	OIL TEMPERATURE SENSOR: WITH (VIA EST)	
	ELECTRIC PARTS ORDER: SEPARATE ORDER	
	SEPARATE ORDER: 4646 185 019	
	4646 199 406 (FILTER)	
	CONTROL UNIT: EST 37A	
	SOFTWARE OPTIONS ERGOLOCKUP L	
	GEAR SELECTOR: WITHOUT	
	2ND GEAR SELECTOR: WITHOUT	
	DISPLAY: WITHOUT	
	LOAD SENSOR: WITHOUT	
	WIRING: WITHOUT	
	OIL FILLING TRANSM.: WITHOUT	
	OIL GRADE TRANSM.: OIL SPECIFICATION TE ML 03	
	PRIMER PAINT: BLACK RAL 9005	
	DOCUMENTATION GEAR BOX: -----	
	SECTION DRAWING: 4646 055 012	
	INSTALLATION DRAWING: 4646 615 007	
	GEARBOX DIAGRAM: 4646 700 395	
	OIL CIRCUIT DIAGRAM: 4646 700 383	
	INSTALL. INSTRUCTIONS: 0000 702 951	
	DRAWING 6009 665 002	
	CONNECTION DIAGRAM: 6029 702 661	
	ADDITIONAL RELEASED PERF.CALC. 4646 709 883	
	4646 709 893	
	4646 709 894	
	4646 709 895	
	4646 709 896	
	4646 709 897	
	4646 709 898	
	4646 709 899	
	4646 709 900	
	4646 709 901	

Technical Cover

Page 4 from 4

Material number: 4646.015.007



5 WG 311 /

Pos.	Information	Amendment number
	REMARKS: TORSIONAL VIBRATION DAMPER REQUIRED	

Assembly group overview

Page 1 from 2



5 WG 311 /

Material number: 4646.015.007

Picture	Pos.	Material number	Name	Quantity	Amend. no.	Techn. Info.
416603707500	500	4166.037.075	CONVERTER	1		
464610206200	30	4646.102.062	INPUT	1		
464610118400	10	4646.101.184	TRANSMISSION HOUSING	1		
464610145900	20	4646.101.459	TRANSMISSION HOUSING	1		
464610801400	150	4646.108.014	COUNTERSHAFT	1		
464615107400	350	4646.151.074	COUPLING	1		
464615147000	355	4646.151.470	COUPLING	1		
464615148500	352	4646.151.485	COUPLING	1		
464615207800	360	4646.152.078	COUPLING	1		
464615251200	365	4646.152.512	COUPLING	1		
464615254900	367	4646.152.549	COUPLING	1		
464615307400	370	4646.153.074	COUPLING	1		
464615345700	375	4646.153.457	COUPLING	1		
464610303500	50	4646.103.035	OUTPUT	1		
464610343000	70	4646.103.430	OUTPUT	1		
464615407600	380	4646.154.076	POWER TAKE-OFF	1		

Assembly group overview

Page 2 from 2



5 WG 311 /

Material number: 4646.015.007

Picture	Pos.	Material number	Name	Quantity	Amend. no.	Techn. Info.
464615446700	390	4646.154.467	POWER TAKE-OFF	1		
464615601100	420	4646.156.011	POWER TAKE-OFF	1		
464615644600	430	4646.156.446	POWER TAKE-OFF	1		
464610602200	110	4646.106.022	SHIFT SYSTEM	1		
465710640100	115	4657.106.401	SHIFT SYSTEM	1		
465615901801	120	4656.159.018	SHIFT SYSTEM	1		
464612301100	130	4646.123.011	CONTROL UNIT	1		
464612201200	225	4646.122.012	PRESSURE OIL PUMP	1		
464613800400	330	4646.138.004	FILTER	1		
464612502350	250	4646.125.023	INDUCTIVE SENSOR	1		
464612400600	235	4646.124.006	TEMPERATURE SENSOR	1		
464613101000	290	4646.131.010	FILLER NOZZLE	1		
464612141401	210	4646.121.414	OIL PIPE	1		
464618501900	995	4646.185.019	ACCESSORIES	1		

Picture

Page 1 from 1

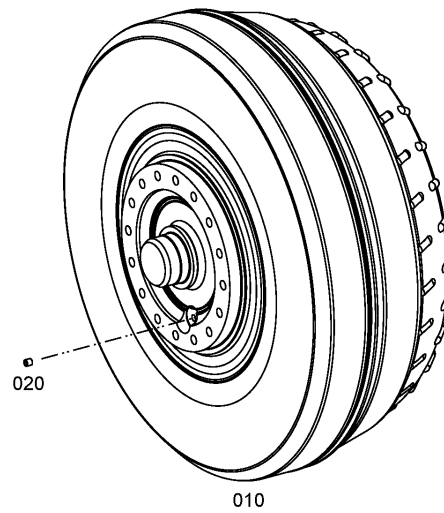
Material number: 4646.015.007

Picture: 416603707500

Material-assembly-group-no: 4166.037.075



5 WG 311 /
CONVERTER



Picture

Page 1 from 1

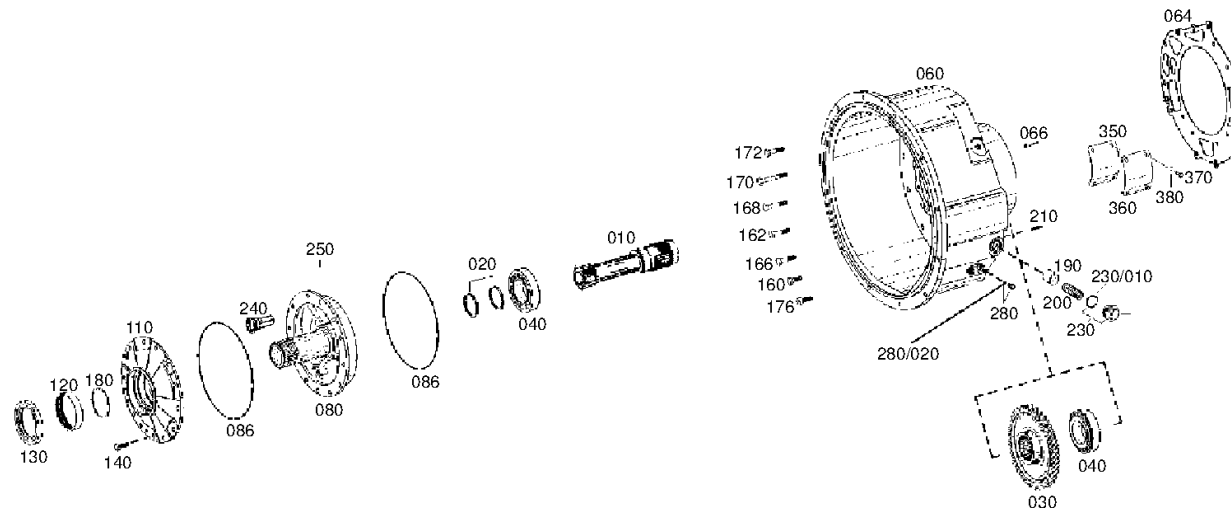
Material number: 4646.015.007

Picture: 464610206200

Material-assembly-group-no: 4646.102.062



5 WG 311 /
INPUT



Picture

Page 1 from 1

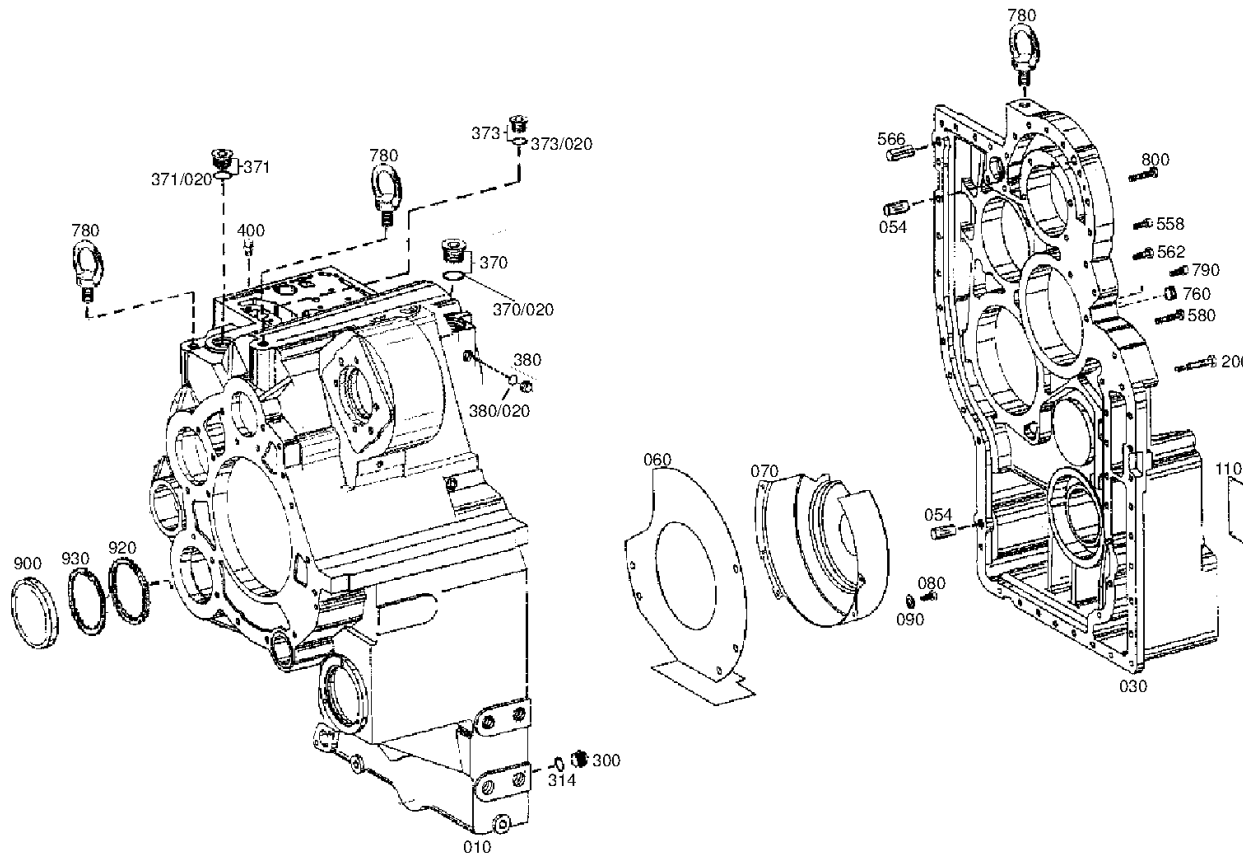
Material number: 4646.015.007

Picture: 464610118400

Material-assembly-group-no: 4646.101.184



5 WG 311 /
TRANSMISSION HOUSING



Picture

Page 1 from 1

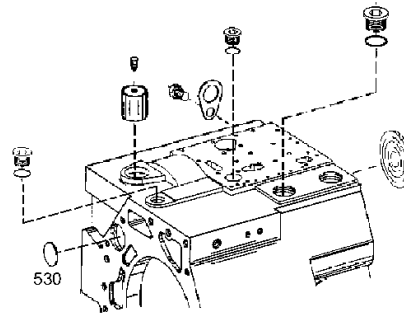
Material number: 4646.015.007

Picture: 464610145900

Material-assembly-group-no: 4646.101.459



5 WG 311 /
TRANSMISSION HOUSING



Picture

Page 1 from 1

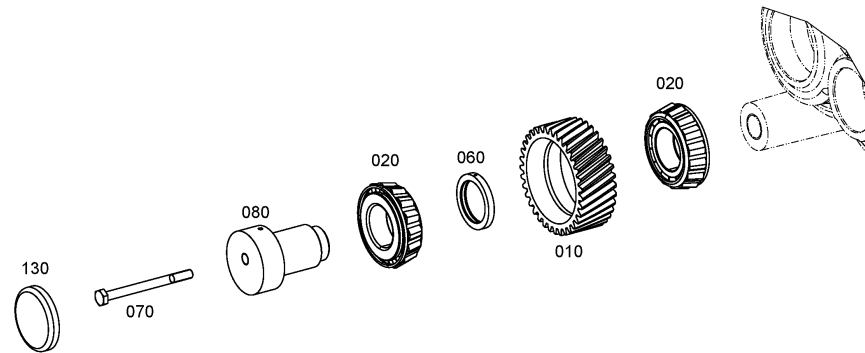
Material number: 4646.015.007

Picture: 464610801400

Material-assembly-group-no: 4646.108.014



5 WG 311 /
COUNTERSHAFT



Picture

Page 1 from 1

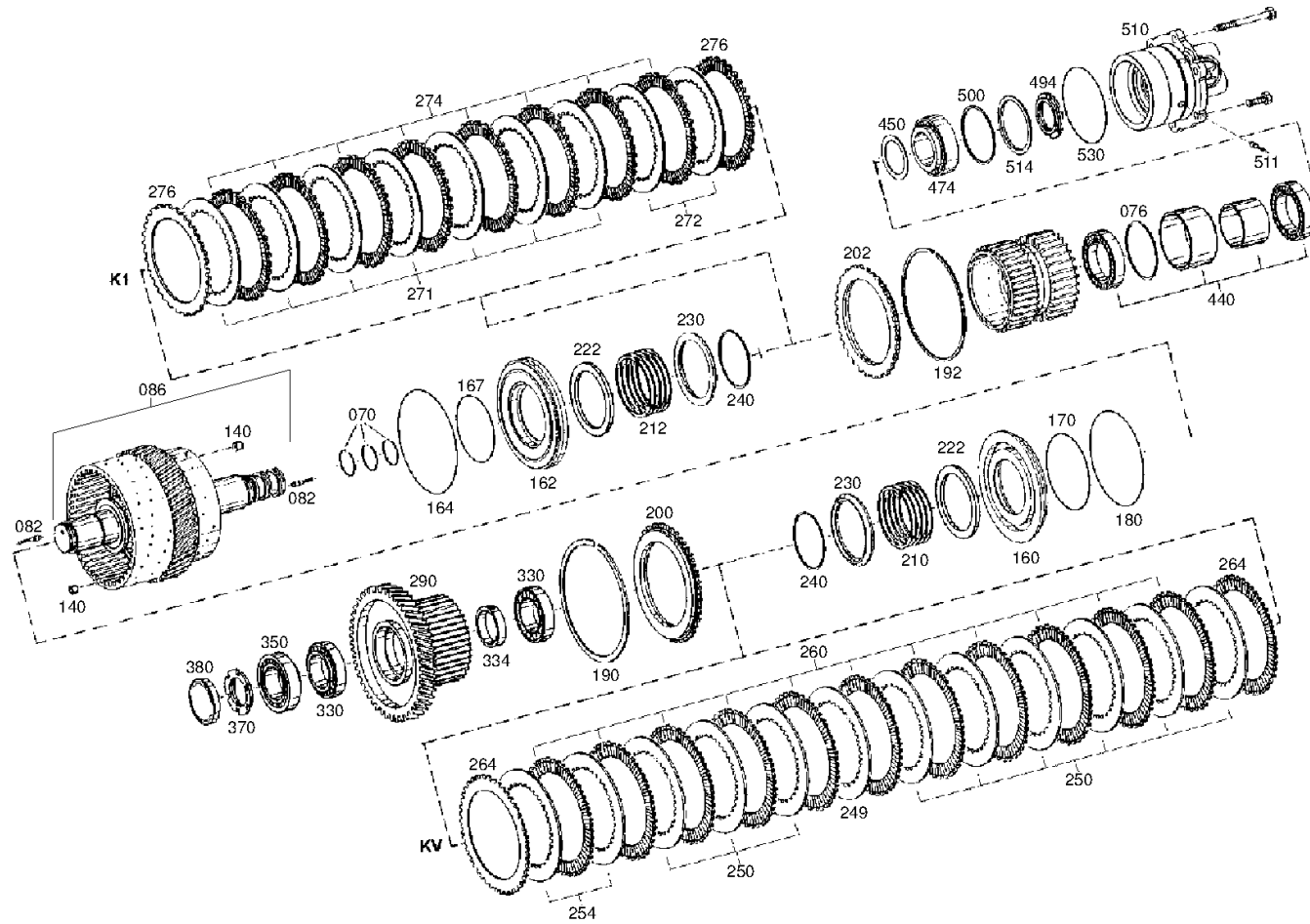
Material number: 4646.015.007

Picture: 464615107400

Material-assembly-group-no: 4646.151.074



5 WG 311 /
COUPLING



Picture

Page 1 from 1

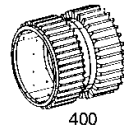
Material number: 4646.015.007

Picture: 464615147000

Material-assembly-group-no: 4646.151.470



5 WG 311 /
COUPLING



Picture

Page 1 from 1

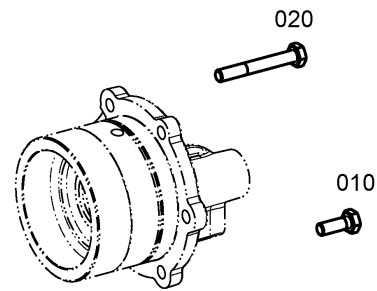
Material number: 4646.015.007

Picture: 464615148500

Material-assembly-group-no: 4646.151.485



5 WG 311 /
COUPLING



Picture

Page 1 from 1

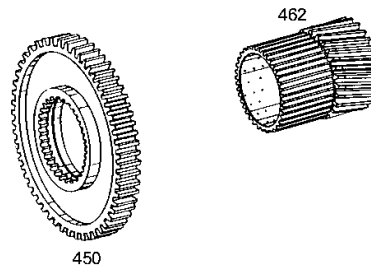
Material number: 4646.015.007

Picture: 464615251200

Material-assembly-group-no: 4646.152.512



5 WG 311 /
COUPLING



Picture

Page 1 from 1

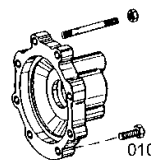
Material number: 4646.015.007

Picture: 464615254900

Material-assembly-group-no: 4646.152.549



5 WG 311 /
COUPLING



Picture

Page 1 from 1

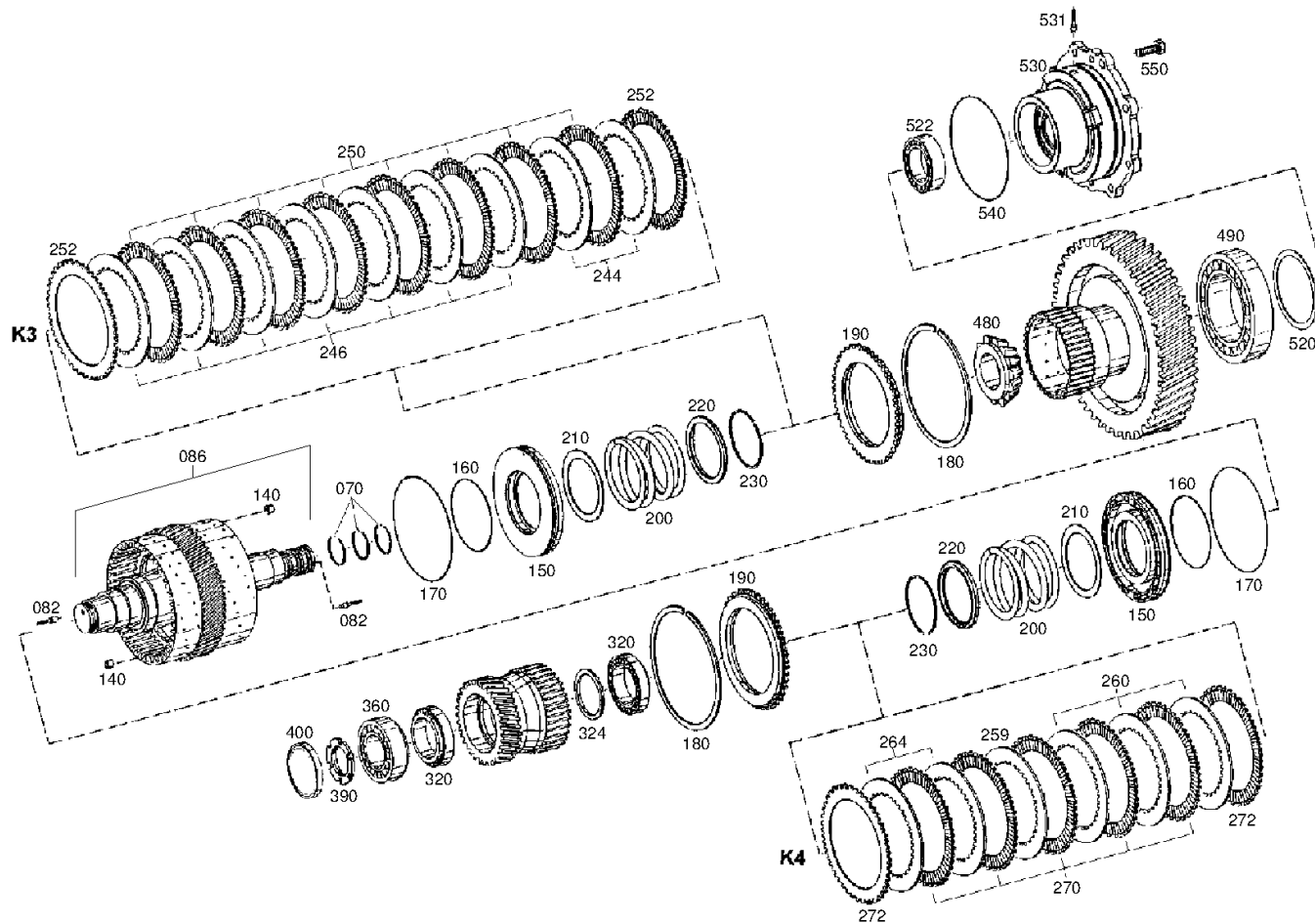
Material number: 4646.015.007

Picture: 464615307400

Material-assembly-group-no: 4646.153.074



5 WG 311 /
COUPLING



Picture

Page 1 from 1

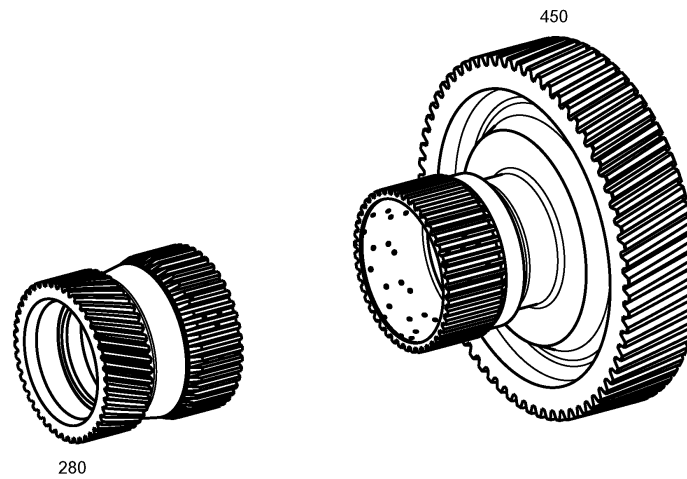
Material number: 4646.015.007

Picture: 464615345700

Material-assembly-group-no: 4646.153.457



5 WG 311 /
COUPLING



Picture

Page 1 from 1

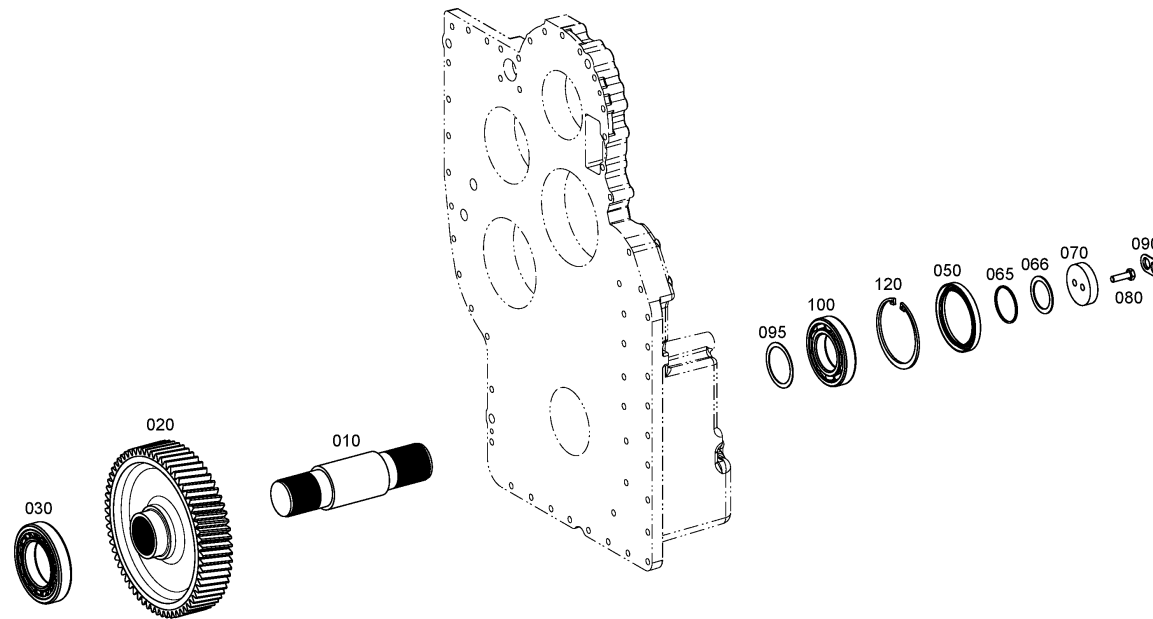
Material number: 4646.015.007

Picture: 464610303500

Material-assembly-group-no: 4646.103.035



5 WG 311 /
OUTPUT



Picture

Page 1 from 1

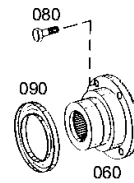
Material number: 4646.015.007

Picture: 464610343000

Material-assembly-group-no: 4646.103.430



5 WG 311 /
OUTPUT



Picture

Page 1 from 1

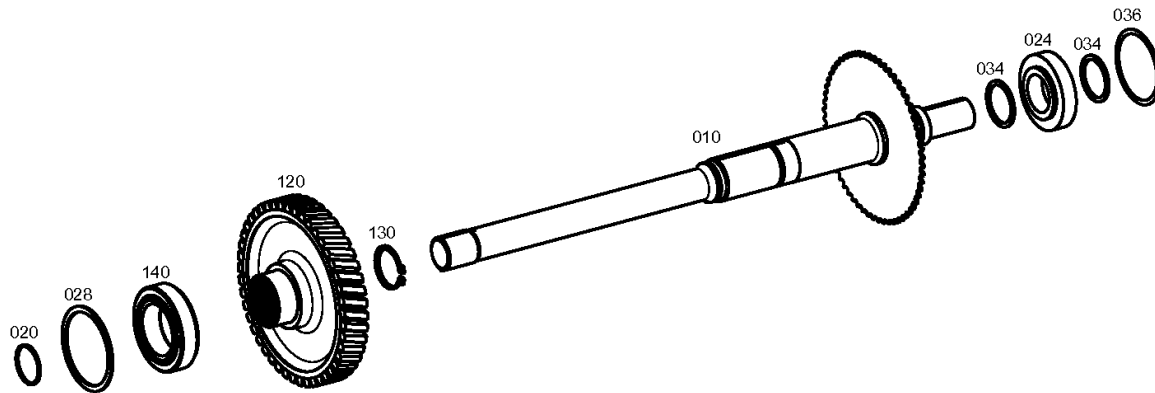
Material number: 4646.015.007

Picture: 464615407600

Material-assembly-group-no: 4646.154.076



5 WG 311 /
POWER TAKE-OFF



Picture

Page 1 from 1

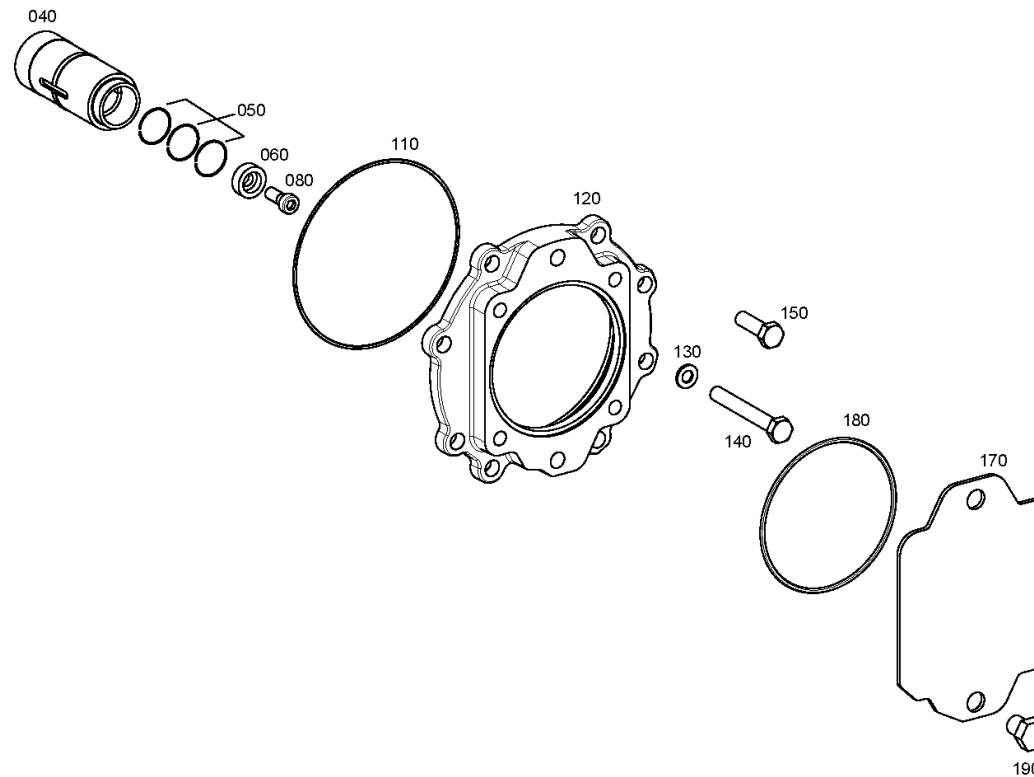
Material number: 4646.015.007

Picture: 464615446700

Material-assembly-group-no: 4646.154.467



5 WG 311 /
POWER TAKE-OFF



Picture

Page 1 from 1

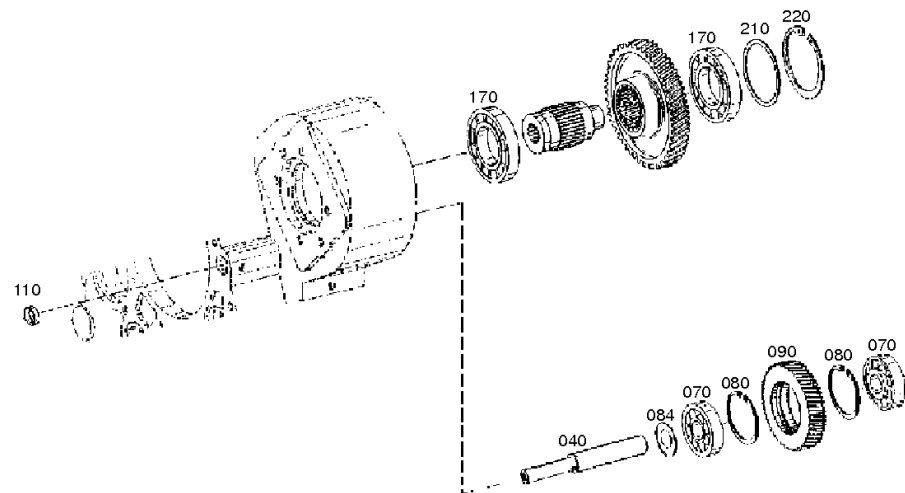
Material number: 4646.015.007

Picture: 464615601100

Material-assembly-group-no: 4646.156.011



5 WG 311 /
POWER TAKE-OFF



Picture

Page 1 from 1

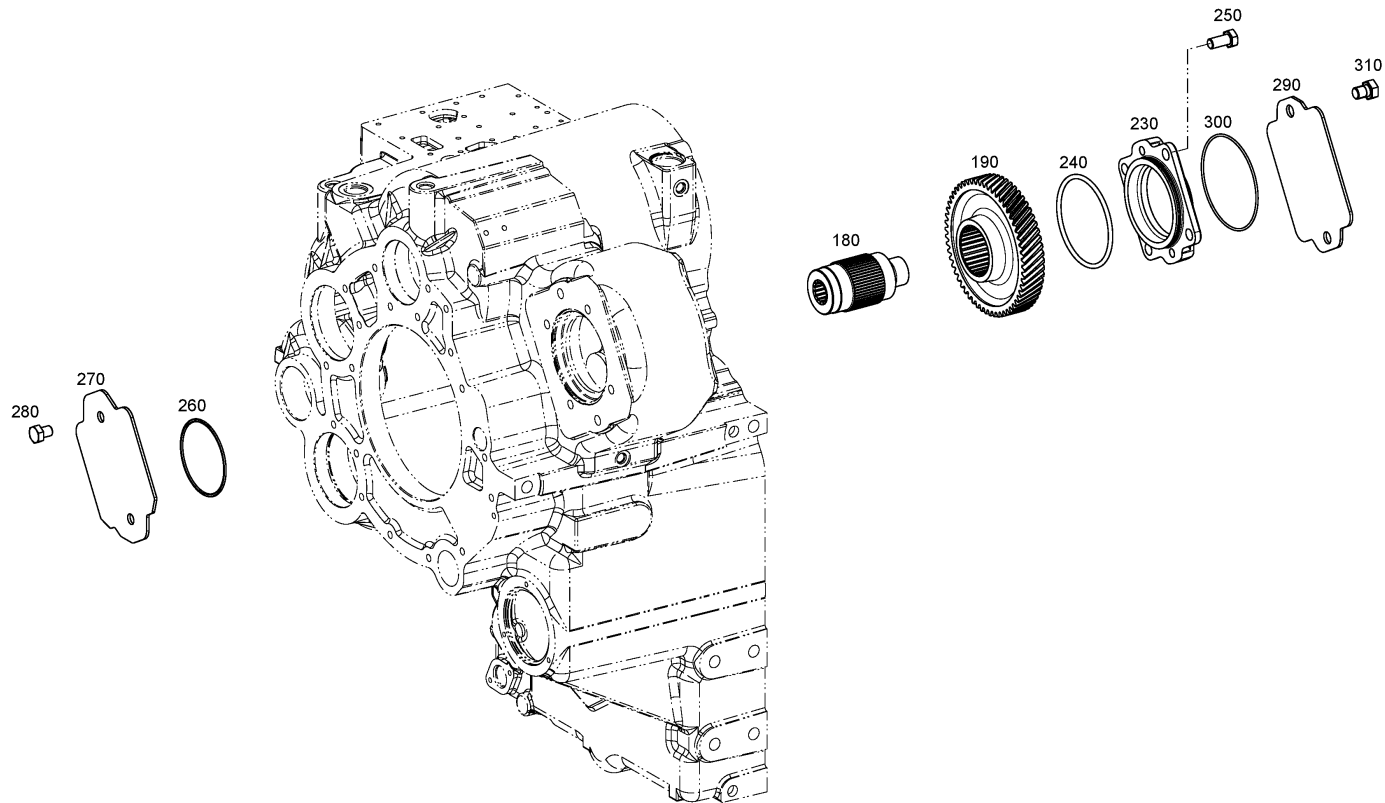
Material number: 4646.015.007

Picture: 464615644600

Material-assembly-group-no: 4646.156.446



5 WG 311 /
POWER TAKE-OFF



Picture

Page 1 from 1

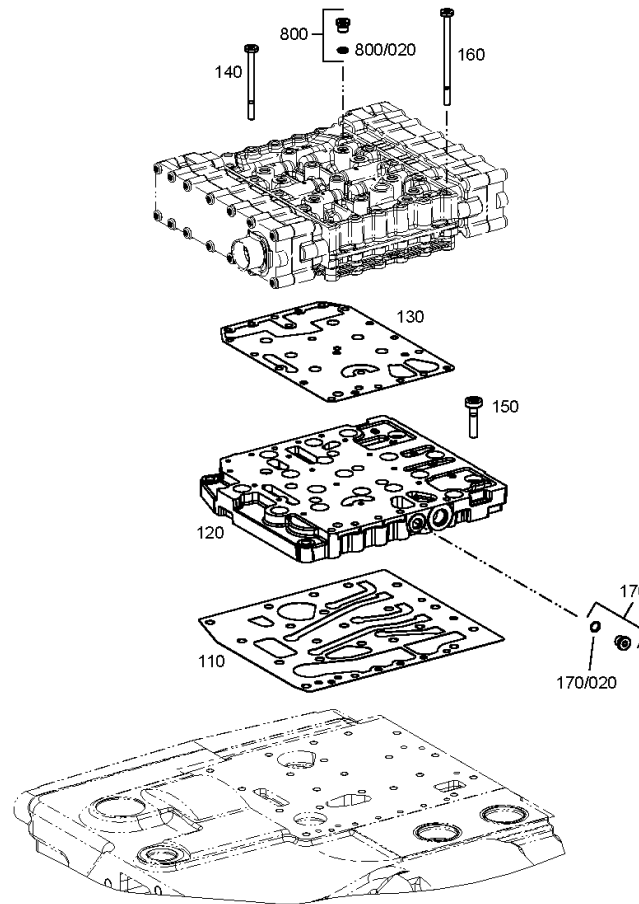
Material number: 4646.015.007

Picture: 464610602200

Material-assembly-group-no: 4646.106.022



5 WG 311 /
SHIFT SYSTEM



Picture

Page 1 from 1

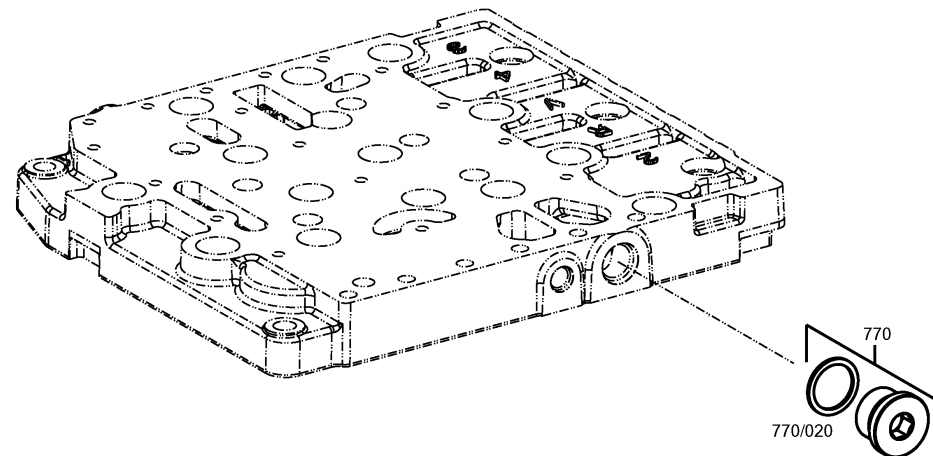
Material number: 4646.015.007

Picture: 465710640100

Material-assembly-group-no: 4657.106.401



5 WG 311 /
SHIFT SYSTEM



Picture

Page 1 from 2

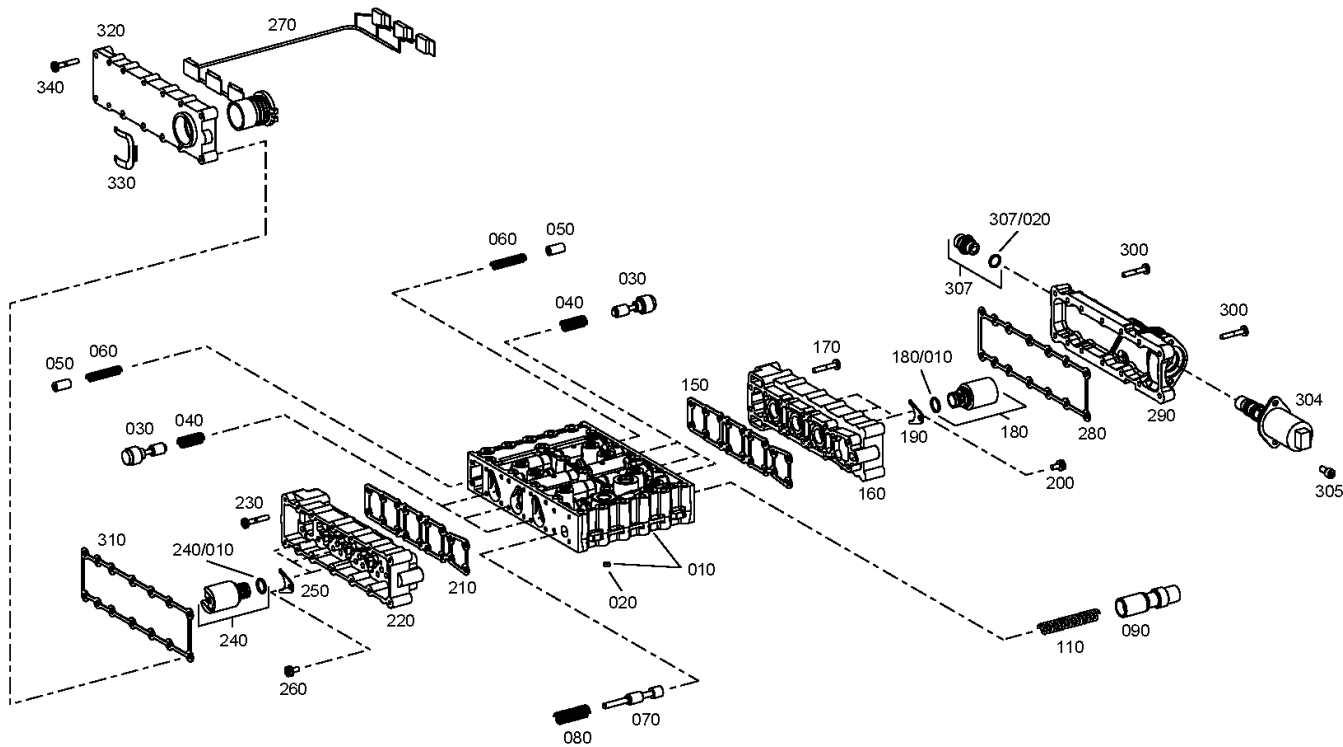
Material number: 4646.015.007

Picture: 465615901801

Material-assembly-group-no: 4656.159.018



5 WG 311 /
SHIFT SYSTEM



Picture

Page 2 from 2

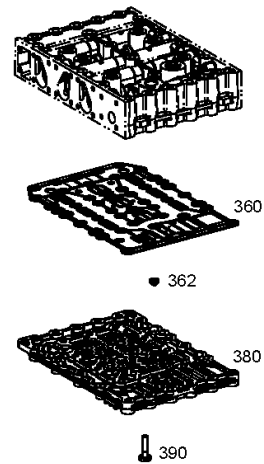
Material number: 4646.015.007

Picture: 465615901802

Material-assembly-group-no: 4656.159.018



5 WG 311 /
SHIFT SYSTEM



Picture

Page 1 from 1

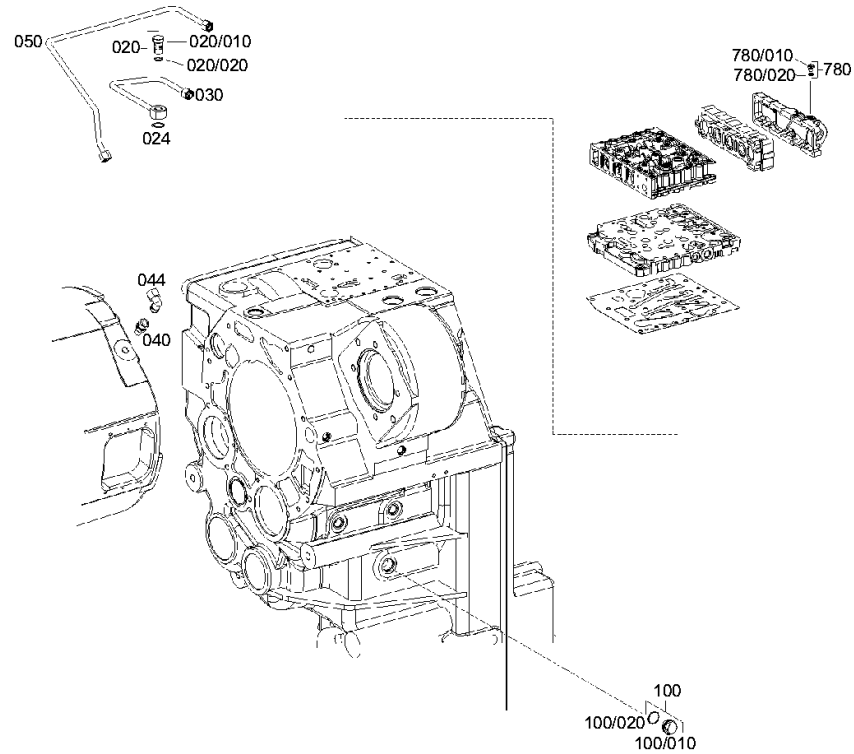
Material number: 4646.015.007

Picture: 464612301100

Material-assembly-group-no: 4646.123.011



5 WG 311 /
CONTROL UNIT



Picture

Page 1 from 1

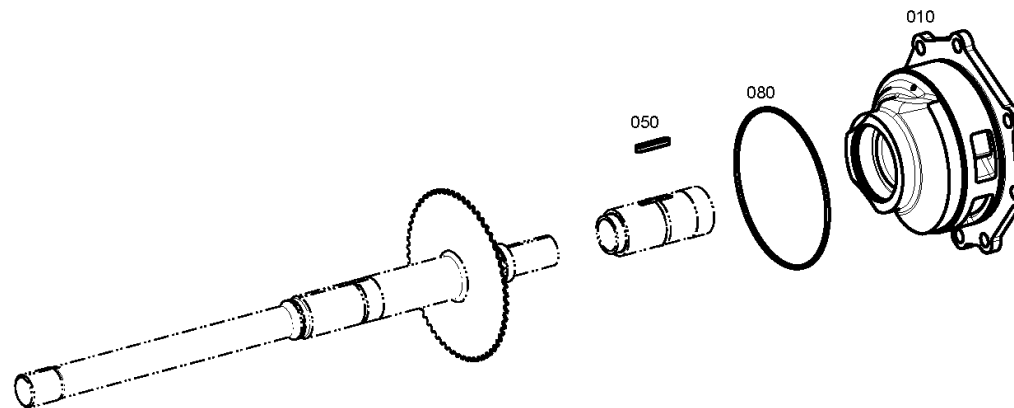
Material number: 4646.015.007

Picture: 464612201200

Material-assembly-group-no: 4646.122.012



5 WG 311 /
PRESSURE OIL PUMP



Picture

Page 1 from 1

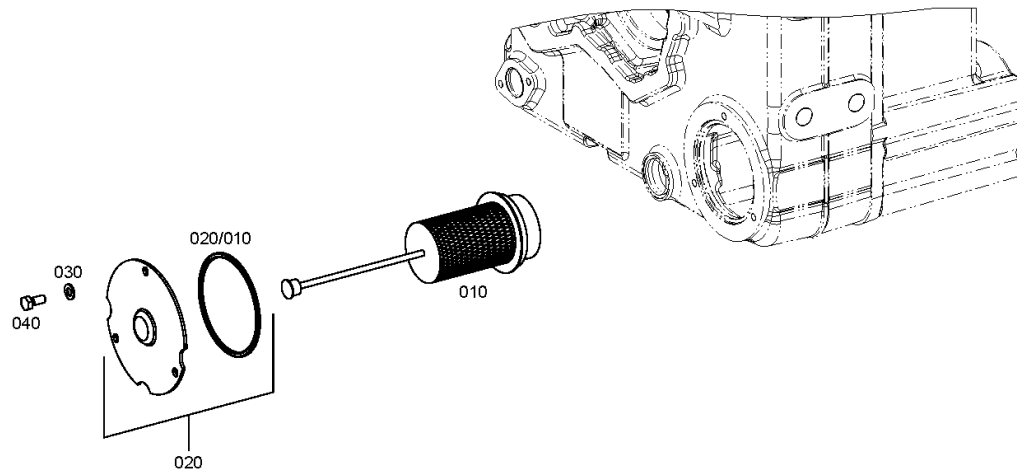
Material number: 4646.015.007

Picture: 464613800400

Material-assembly-group-no: 4646.138.004



5 WG 311 /
FILTER



Picture

Page 1 from 1

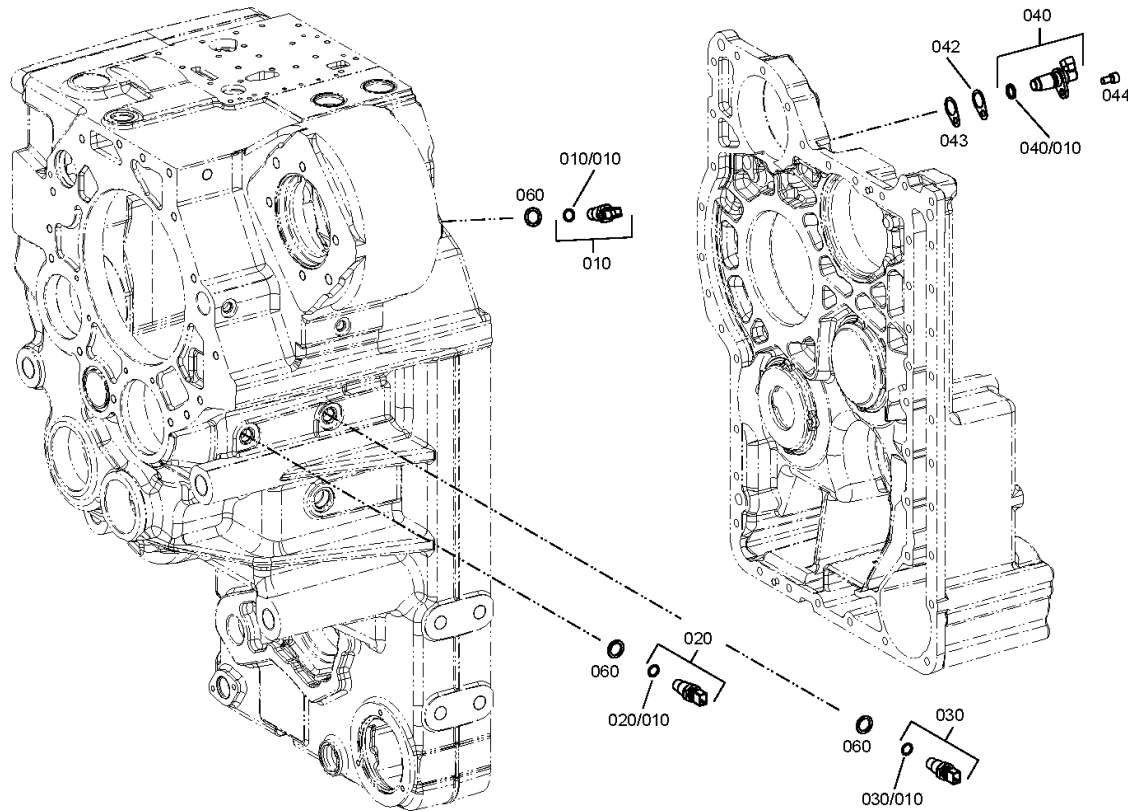
Material number: 4646.015.007

Picture: 464612502350

Material-assembly-group-no: 4646.125.023



5 WG 311 /
INDUCTIVE SENSOR



Picture

Page 1 from 1

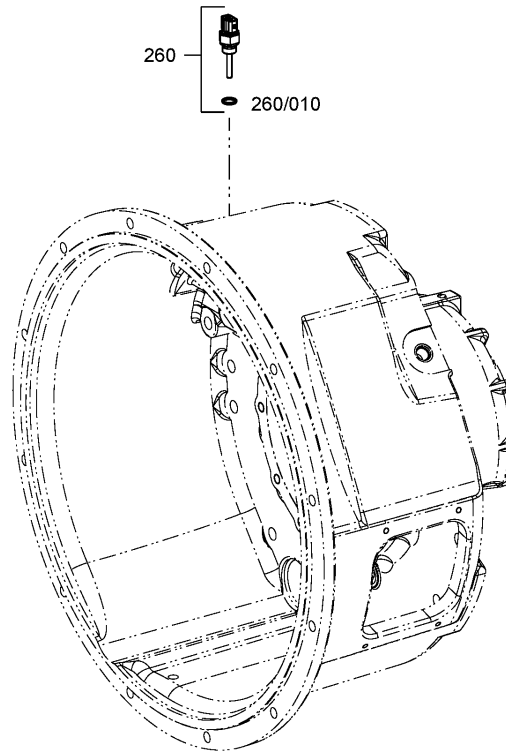
Material number: 4646.015.007

Picture: 464612400600

Material-assembly-group-no: 4646.124.006



5 WG 311 /
TEMPERATURE SENSOR



Picture

Page 1 from 1

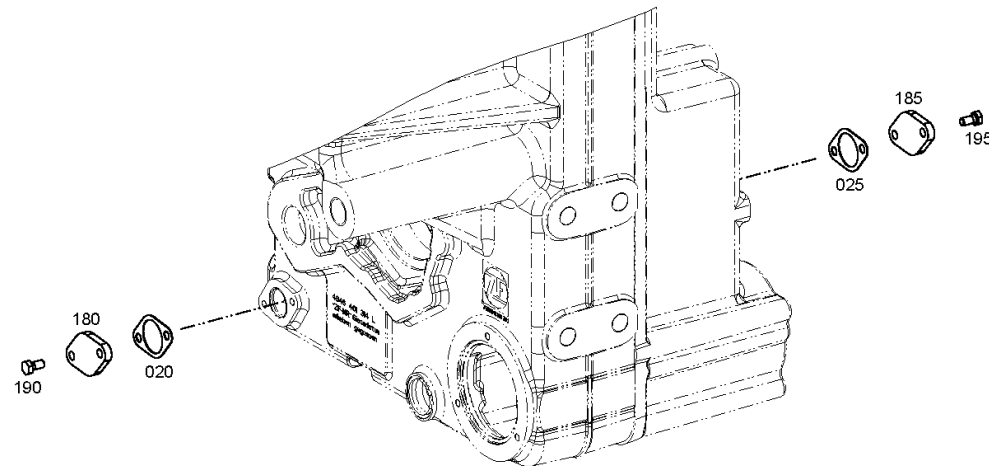
Material number: 4646.015.007

Picture: 464613101000

Material-assembly-group-no: 4646.131.010



5 WG 311 /
FILLER NOZZLE



Picture

Page 1 from 2

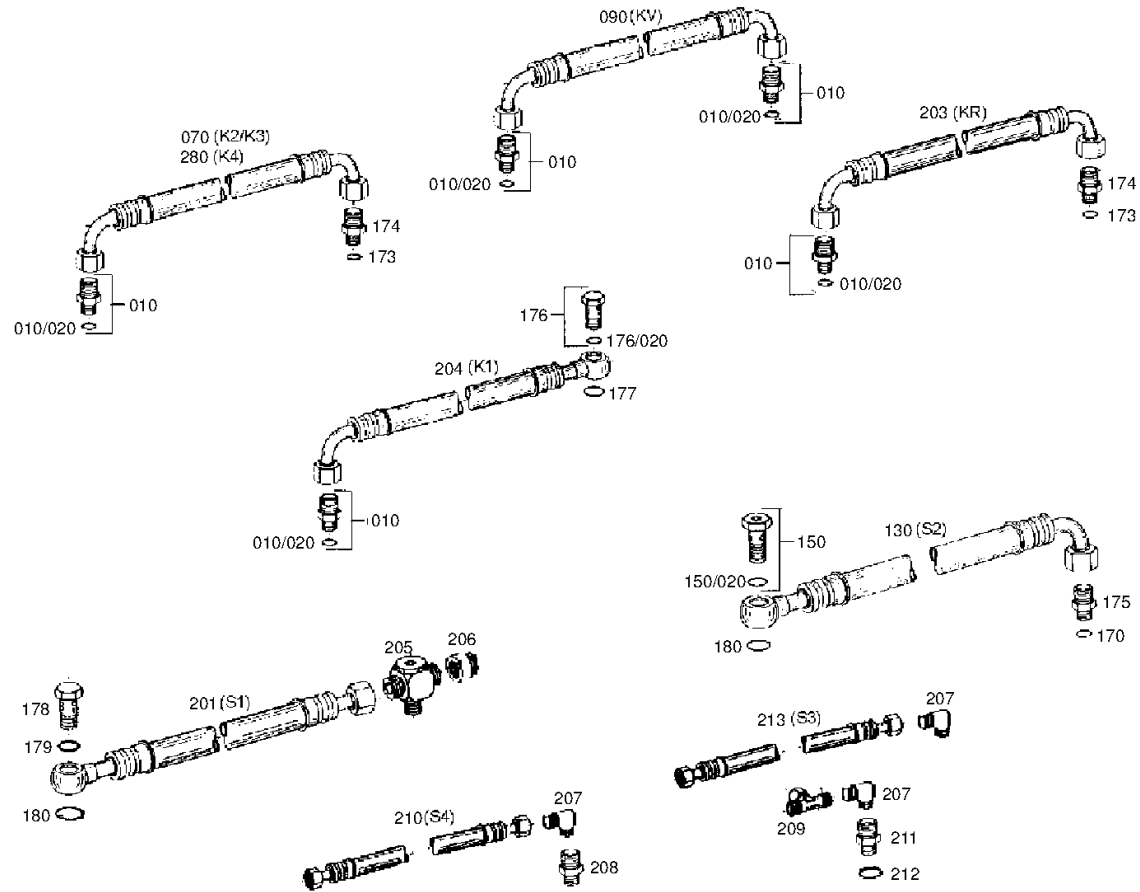
Material number: 4646.015.007

Picture: 464612141401

Material-assembly-group-no: 4646.121.414



5 WG 311 /
OIL PIPE



Picture

Page 2 from 2

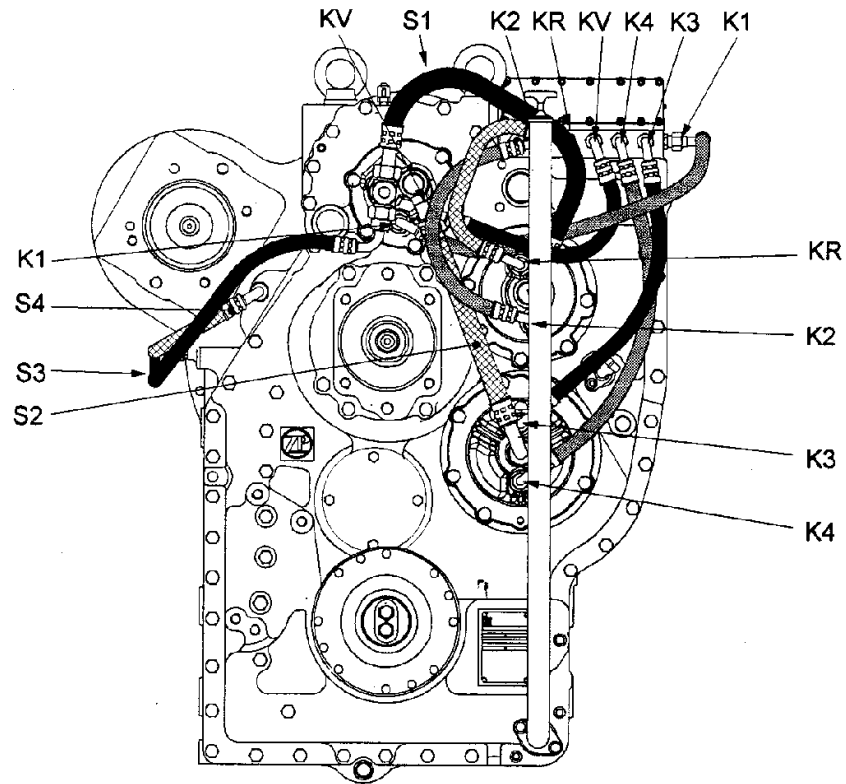
Material number: 4646.015.007

Picture: 464612141402

Material-assembly-group-no: 4646.121.414



5 WG 311 /
OIL PIPE



Picture

Page 1 from 1

Material number: 4646.015.007

Picture: 464618501900

Material-assembly-group-no: 4646.185.019



5 WG 311 /
ACCESSORIES

