



Spare Parts Catalog

4 WG 260

Material number: 4646.054.118

Current date: 09.01.2023

ZF Friedrichshafen AG
Hauptverwaltung
80038 Friedrichshafen
Deutschland

Telefon: +49 7541 77-0

Telefax: +49 7541 77-908000

www.zf.com

zuständiges Werk:
Passau

Notes relating to the spare parts catalog

Setup of the spare parts catalog

- Cover sheet
- Technical Cover (only in SDM print)
- Overview of figures
- Figure
- Associated parts list
- Next figure
- Associated parts list
- ...

Figure and parts list



Overview of figures

| Bildtafel Figure | Sachnummer Product number | Benennung (Description) | Technische Info Technical info | Description (Benennung) | Menge Quantity | Einheit Unit |
|---------------------|------------------------------|----------------------------|-----------------------------------|----------------------------|-------------------|-----------------|
| 068.08.17 | 1316.170.001 | AUSLEGER | WL | SHIFT TURRET | 1 | Stk |
| 068.08.06 | 1316.170.031 | DECKEL | WL*H-H *VM | COVER | 1 | Stk |
| 068.08.14 | 1316.170.808 | DECKEL | WL*AUSL+GEH*H-H*HF160N | COVER | 1 | Stk |
| 08 | 1316.170.441 | ANSCHLUSSTEILE | WL*NG-VORB*RG-SCHL*168N *BAJONETT | CONNECTING PARTS | 1 | Stk |

The "gap" indicates that there is no separate graphics panel (poster) for this assembly
The parts of this assembly are shown with the same mid-section number on the figure

1 Positions and subpositions

| Pos. | Sachnummer Product number | Benennung (Description) | Technische Info Technical info | Description (Benennung) | Menge Quantity | Einheit Unit |
|-------|------------------------------|----------------------------|-----------------------------------|----------------------------|-------------------|-----------------|
| 0370 | 1315.201.054 | RUECKLAUFBOLZEN | KPL.16S151*SG*L= 79 | REV.IDLER SHAFT | 1 | Stk |
| /0120 | 0631.329.293 | SPANNSTIFT | | SLOT. PIN | 1 | Stk |

Positions marked with "/" are the individual items of a completion
For example: Position 0370 contains a centering pin with the position /0120

2 Combinations with standardized parts

| Pos. | Sachnummer Product number | Benennung (Description) | Technische Info Technical info | Description (Benennung) | Menge Quantity | Einheit Unit |
|------|------------------------------|----------------------------|-----------------------------------|----------------------------|-------------------|-----------------|
| 0630 | | VERSCHL.SCHR. | | SCREW PLUG | 1 | Stk |
| | 0636.302.067 | VERSCHL.SCHR. | | SCREW PLUG | 1 | Stk |
| | 0634.801.249 | DICHTRING | A 26 X 31 | SEALING RING | 1 | Stk |

The parts list shows the components included in the combination of standardized parts

3 Depiction of position/item number on the figure and in the parts list

01.620 - on the figure 01 relates to the assembly in which the position is included. Due to program-related reasons, it is shown on the figure.

0620 - in the parts list

| Pos. | Sachnummer Product number | Benennung (Description) | Technische Info Technical info | Description (Benennung) | Menge Quantity | Einheit Unit |
|------|------------------------------|----------------------------|-----------------------------------|----------------------------|-------------------|-----------------|
| 0620 | 0732.040.736 | DRUCKFEDER | | COMPRESSION SPRING | 1 | Stk |

4 *-Positions

Positions marked with an * are optional i.e. inclusion in the parts list is not mandatory.
The following note is shown on the figure

je nach Stücklistenausführung
depending on spec. number
*
suivant la nomenclature
secondo la distinta base

5 Parts, dotted display

Parts with dotted display on the figure are only used for orientation of other parts

Technical Cover

Page 1 from 3

Material number: 4646.054.118



4 WG 260 /

| Pos. | Information | Amendment number |
|------|--|------------------|
| | CUSTOMER: CNH | |
| | CUSTOMER-IDENT-NO.: 84306966 | |
| | 1.PERFORMANCE CALC.: 4646 709 113 | |
| | VEHICLE DESIGNATION: PL23 | |
| | WEIGHT EMPTY: 23,836 TO | |
| | ENGINE: FPT CURSOR 9 | |
| | ENGINE POWER: 220,7 KW | |
| | SPEED: 1 800 U/MIN | |
| | INPUT TORQUE: 1 448 NM | |
| | SPEED: 1 000 U/MIN | |
| | TYRE SIZE: 26,5 R 25 L3 | |
| | TYRE RADIUS DYN.: 0,816 M | |
| | AXLE RATIO: 24,666 | |
| | MAX. SPEED: 37,3 KM/H | |
| | PRODUCT DESCRIPTION: ZF-ERGOPOWER L | |
| | TRANSMISSION TYPE 4 WG 260 | |
| | DROP CENTER DISTANCE: 575 MM | |
| | VEHICLE: WHEEL LOADER | |
| | 1. GEAR FORWARD: 3,731 | |
| | 2. GEAR FORWARD: 2,207 | |
| | 3. GEAR FORWARD: 1,421 | |
| | 4. GEAR FORWARD: 0,625 | |
| | 1. GEAR REVERSE: 3,731 | |
| | 2. GEAR REVERSE: 2,207 | |
| | 3. GEAR REVERSE: 0,970 | |
| | NUMBER OF PULSES ENGIN: 60 | |
| | NUMBER OF PULSES TURB: 59 | |
| | NUMBER OF PULSES MRK: 91 | |
| | NUMBER OF PULSES OUTP.: 64 | |
| | SHIFTED CLUTCHES 1_KV_K1_2_KV_K2_3_K4_K2 | |
| | SHIFTED COUPLING 4G.K4/K3 | |
| | CONVERTER: W 370 | |
| | CONVERTER PART NR.: 037 H 054 | |

Technical Cover

Page 2 from 3

Material number: 4646.054.118



4 WG 260 /

| Pos. | Information | Amendment number |
|------|---|------------------|
| | LOCK-UP CLUTCH: WITHOUT | |
| | STALL TORQUE RATIO: 2,98 | |
| | TORQUE CONVERTER ABSORP 191 NM | |
| | STATOR FREEWHEEL: WITHOUT | |
| | ENGINE INPUT: DIRECT MOUNTED TO ENGINE | |
| | ENGINE: FIAT POWER TRAIN | |
| | ENGINE-CONNECTION: SAE 1 4646 500 263 | |
| | OUTPUT: STANDARD | |
| | GEAR BOX SUMP STANDARD | |
| | OUTPUT FLANGE CONVERTER MECH 8,5 C | |
| | OUTPUT PTO SIDE: WITH PARKING BRAKE | |
| | DISC BRAKE: SAHR FSG 110 | |
| | RELEASE PRESSURE: 120 - 150 BAR | |
| | MEDIUM: HYDRAULIK OIL DIN 51525 | |
| | CONNECTION BRAKE PRESSU JIC 9/16-18 | |
| | OUTPUT FLANGE PTO SIDE: MECH 8,5 C | |
| | 1.POWER TAKE OFF: ----- | |
| | 1.PTO FLANGE: SAE C - C 2/4 HOLE (M16/M14) | |
| | DRIVER / PROFILE: SAE C - C 12/24 DP 17 Z | |
| | 2. POWER TAKE OFF: ----- | |
| | 2.PTO FLANGE: SAE B 2 HOLE M14 | |
| | DRIVER / PROFILE: SAE B 16/32 DP 13T | |
| | GEAR CHANGE CONTROL: ZF-ERGOSHIFT/ PROP VALVE | |
| | VOLTAGE: 24 VOLT | |
| | SPEED CONTROL: CONNECTION VIA EST | |
| | OIL LEVEL TUBE: WITHOUT | |
| | OIL DIPSTICK: WITHOUT | |
| | FILTER INSTALLATION: SEPARATE MOUNTED | |
| | PRES. DROP SWITCH: CLOSING SWITCH | |
| | ADAPTER WITHOUT | |
| | EMERGENCY STEERING PUMP WITHOUT | |
| | OIL TEMPERATURE SENSOR: WITH (VIA EST) | |
| | CONTROL UNIT: EST 37A | |

Technical Cover

Page 3 from 3

Material number: 4646.054.118



4 WG 260 /

| Pos. | Information | Amendment number |
|------|---|------------------|
| | GEAR SELECTOR: DW-2 | |
| | 2ND GEAR SELECTOR: WITHOUT | |
| | DISPLAY: WITHOUT | |
| | LOAD SENSOR: WITHOUT | |
| | WIRING: WITHOUT | |
| | OIL CAPACITY TRANSM.: CA. 32 LITRE | |
| | OIL FILLING TRANSM.: WITHOUT | |
| | OIL GRADE TRANSM.: OIL SPECIFICATION TE ML 03 | |
| | PRIMER PAINT: BLACK RAL 9005 | |
| | DOCUMENTATION GEAR BOX: ----- | |
| | SECTION DRAWING: 4646 054 086 | |
| | INSTALLATION DRAWING: 4646 654 118 | |
| | GEARBOX DIAGRAM: 4646 700 385 | |
| | OIL CIRCUIT DIAGRAM: 4646 700 291 | |
| | INSTALL. INSTRUCTIONS: 0000 702 951 | |
| | REMARKS: FLB 4646 709 114/115 FREED | |

Assembly group overview

Page 1 from 3

Material number: 4646.054.118



4 WG 260 /

| Picture | Pos. | Material number | Name | Quantity | Amend. no. | Techn. Info. |
|--------------|------|-----------------|----------------------|----------|------------|--------------|
| 464613001100 | 270 | 4646.130.011 | ENGINE CONNECTION | 1 | | |
| 416603707400 | 500 | 4166.037.074 | CONVERTER | 1 | | |
| 464610204500 | 30 | 4646.102.045 | INPUT | 1 | | |
| 464610242300 | 35 | 4646.102.423 | INPUT | 1 | | |
| 464610118900 | 10 | 4646.101.189 | TRANSMISSION HOUSING | 1 | | |
| 464610148400 | 14 | 4646.101.484 | TRANSMISSION HOUSING | 1 | | |
| 464610148600 | 12 | 4646.101.486 | TRANSMISSION HOUSING | 1 | | |
| 464610148800 | 16 | 4646.101.488 | TRANSMISSION HOUSING | 1 | | |
| 464616241600 | 20 | 4646.162.416 | OIL PIPE | 1 | | |
| 464610801400 | 150 | 4646.108.014 | COUNTERSHAFT | 1 | | |
| 464615107300 | 350 | 4646.151.073 | COUPLING | 1 | | |
| 464615147100 | 355 | 4646.151.471 | COUPLING | 1 | | |
| 464615148600 | 352 | 4646.151.486 | COUPLING | 1 | | |
| 464615207900 | 360 | 4646.152.079 | COUPLING | 1 | | |
| 464615252300 | 365 | 4646.152.532 | COUPLING | 1 | | |
| 464615254800 | 367 | 4646.152.548 | COUPLING | 1 | | |

Assembly group overview

Page 2 from 3

Material number: 4646.054.118



4 WG 260 /

| Picture | Pos. | Material number | Name | Quantity | Amend. no. | Techn. Info. |
|--------------|------|-----------------|-------------------|----------|------------|--------------|
| 464615307200 | 370 | 4646.153.072 | COUPLING | 1 | | |
| 464615345700 | 375 | 4646.153.457 | COUPLING | 1 | | |
| 464610303700 | 50 | 4646.103.037 | OUTPUT | 1 | | |
| 464610345600 | 60 | 4646.103.456 | OUTPUT | 1 | | |
| 464610901900 | 170 | 4646.109.019 | PARKING BRAKE | 1 | | |
| 464610942300 | 70 | 4646.109.423 | PARKING BRAKE | 1 | | |
| 464615405700 | 380 | 4646.154.057 | POWER TAKE-OFF | 1 | | |
| 464615444000 | 390 | 4646.154.440 | POWER TAKE-OFF | 1 | | |
| 464615501000 | 400 | 4646.155.010 | POWER TAKE-OFF | 1 | | |
| 464615541400 | 410 | 4646.155.414 | POWER TAKE-OFF | 1 | | |
| 464610602200 | 110 | 4646.106.022 | SHIFT SYSTEM | 1 | | |
| 465710640100 | 115 | 4657.106.401 | SHIFT SYSTEM | 1 | | |
| 465615901901 | 120 | 4656.159.019 | SHIFT SYSTEM | 1 | | |
| 464612201200 | 225 | 4646.122.012 | PRESSURE OIL PUMP | 1 | | |
| 464613800400 | 330 | 4646.138.004 | FILTER | 1 | | |
| 464619940600 | 335 | 4646.199.406 | LOOSE PARTS | 1 | | |

Assembly group overview

Page 3 from 3

Material number: 4646.054.118



4 WG 260 /

| Picture | Pos. | Material number | Name | Quantity | Amend. no. | Techn. Info. |
|--------------|------|-----------------|-------------------------|----------|------------|--------------|
| 464612502350 | 250 | 4646.125.023 | INDUCTIVE SENSOR | 1 | | |
| 464613702400 | 310 | 4646.137.024 | EMERGENCY STEERING PUMP | 1 | | |
| 464612400600 | 235 | 4646.124.006 | TEMPERATURE SENSOR | 1 | | |
| 464613101000 | 290 | 4646.131.010 | FILLER NOZZLE | 1 | | |
| 464612111601 | 210 | 4646.121.116 | OIL PIPE | 1 | | |
| 464612141600 | 215 | 4646.121.416 | OIL PIPE | 1 | | |
| 414313900100 | 18 | 4143.139.001 | TYPE PLATE | 1 | | |
| 464619919100 | 395 | 4646.199.191 | LOOSE PARTS | 1 | | |
| 464619919200 | 420 | 4646.199.192 | LOOSE PARTS | 1 | | |

Picture

Page 1 from 1

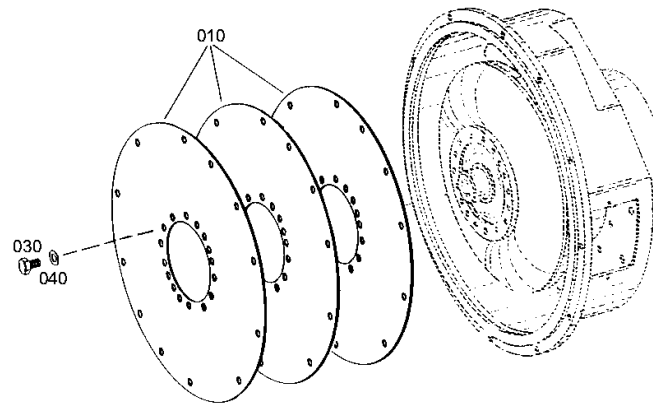
Material number: 4646.054.118

Picture: 464613001100

Material-assembly-group-no: 4646.130.011



4 WG 260 /
ENGINE CONNECTION



Picture

Page 1 from 1

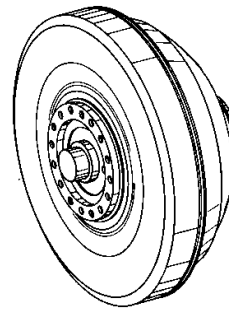
Material number: 4646.054.118

Picture: 416603707400

Material-assembly-group-no: 4166.037.074



4 WG 260 /
CONVERTER



010

Picture

Page 1 from 2

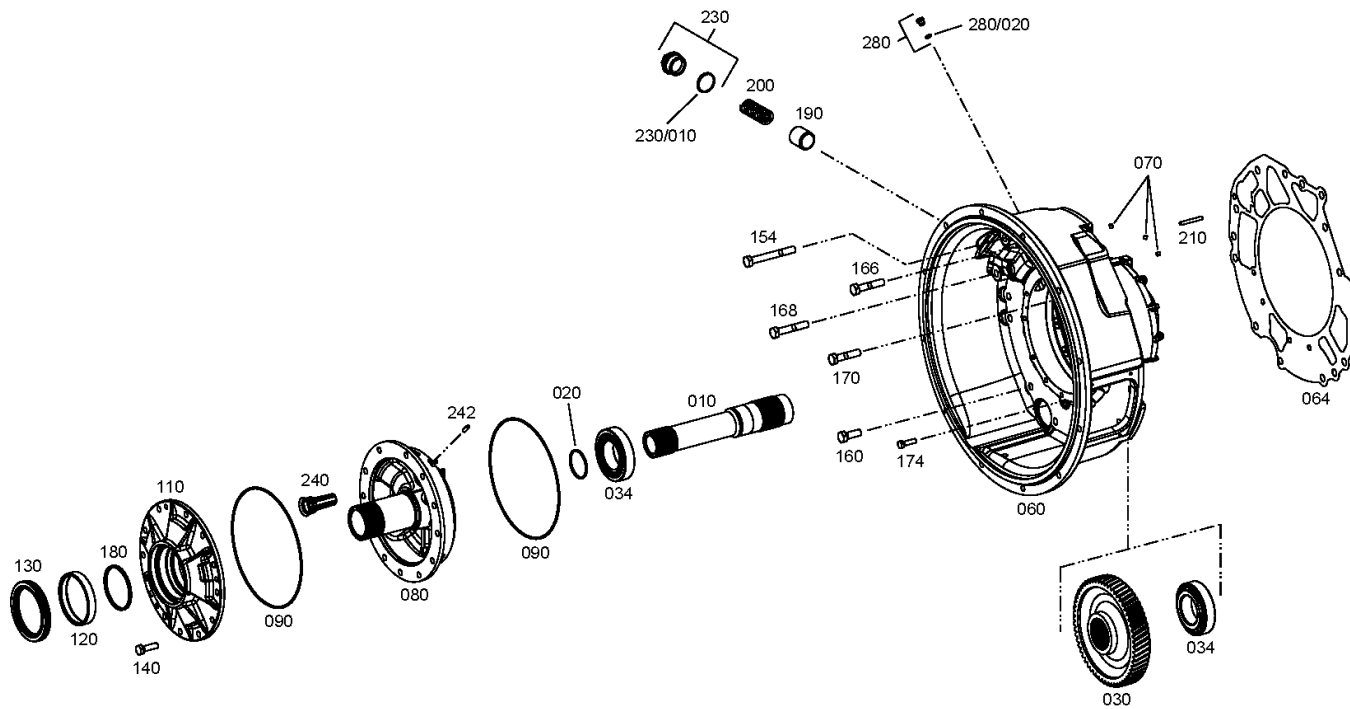
Material number: 4646.054.118

Picture: 464610204500

Material-assembly-group-no: 4646.102.045



4 WG 260 /
INPUT



Picture

Page 2 from 2

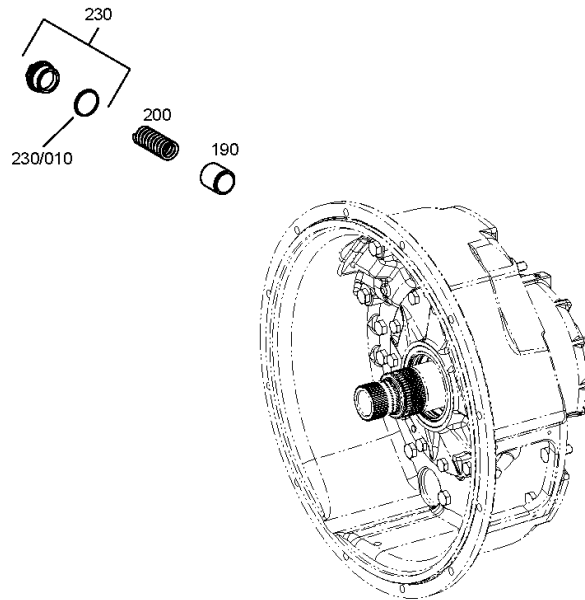
Material number: 4646.054.118

Picture: 464610204580

Material-assembly-group-no: 4646.102.045



4 WG 260 /
INPUT



Picture

Page 1 from 1

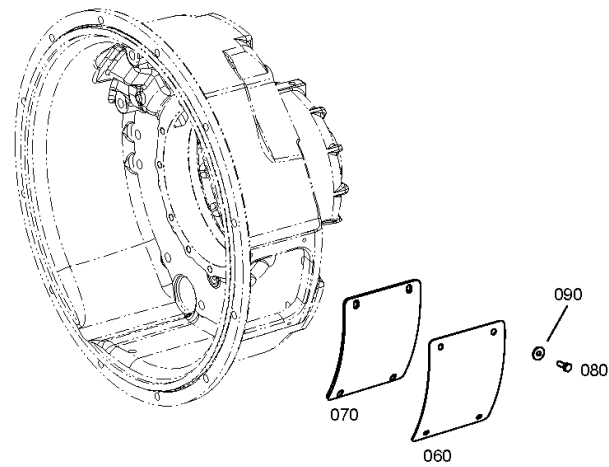
Material number: 4646.054.118

Picture: 464610242300

Material-assembly-group-no: 4646.102.423



4 WG 260 /
INPUT



Picture

Page 1 from 2

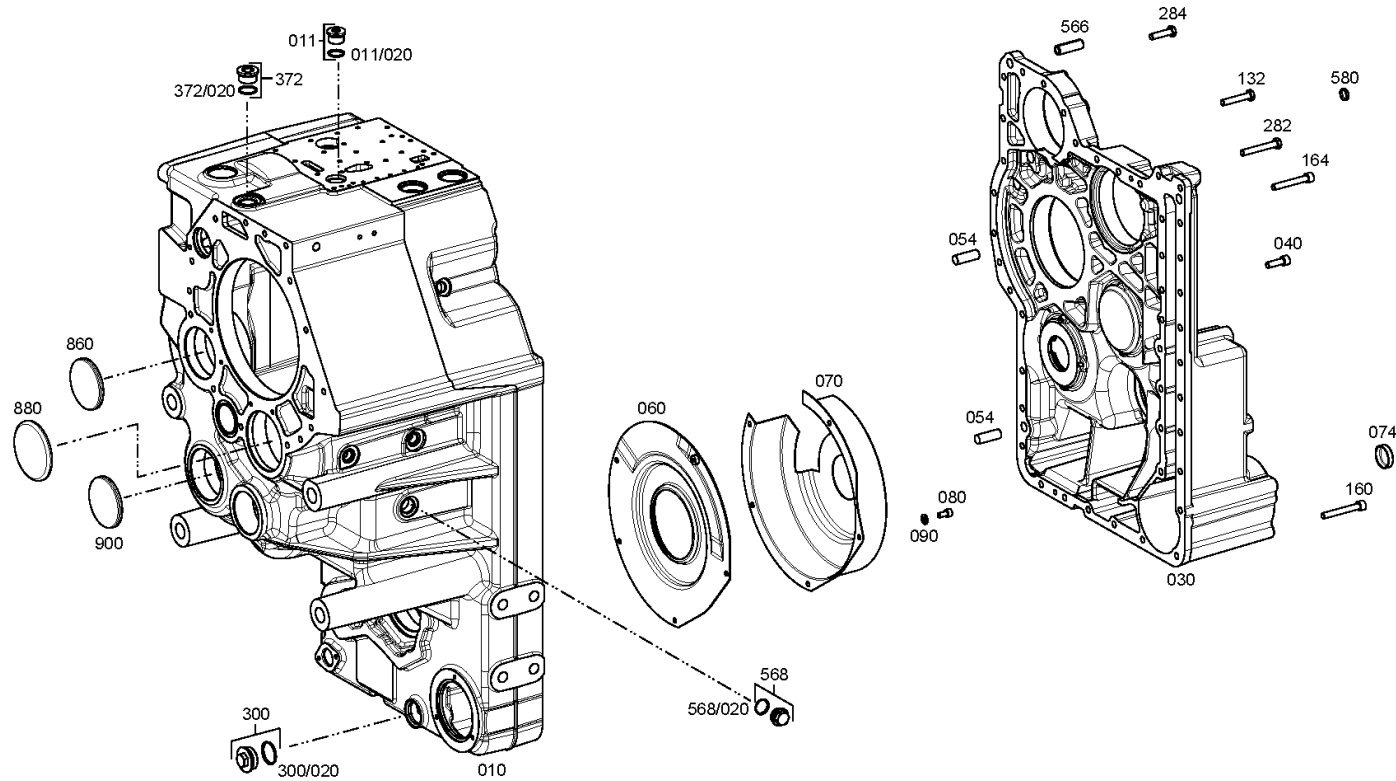
Material number: 4646.054.118

Picture: 464610118900

Material-assembly-group-no: 4646.101.189



4 WG 260 /
TRANSMISSION HOUSING



Picture

Page 2 from 2

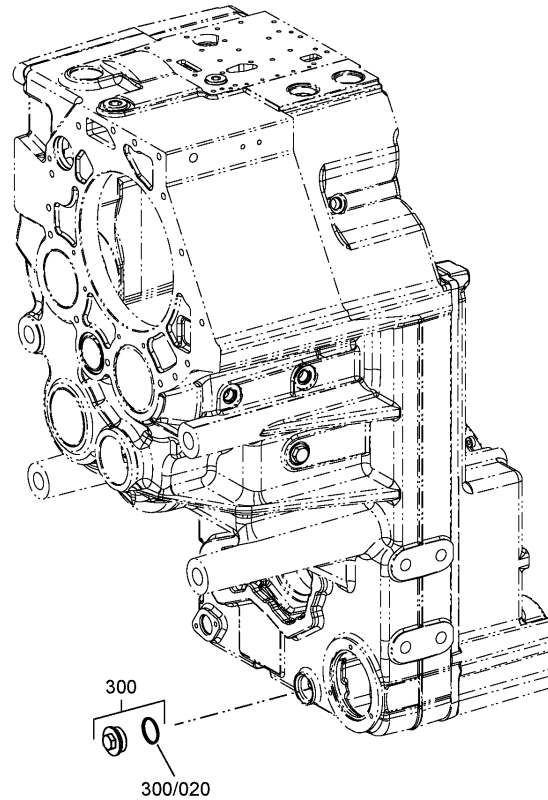
Material number: 4646.054.118

Picture: 464610118980

Material-assembly-group-no: 4646.101.189



4 WG 260 /
TRANSMISSION HOUSING



Picture

Page 1 from 1

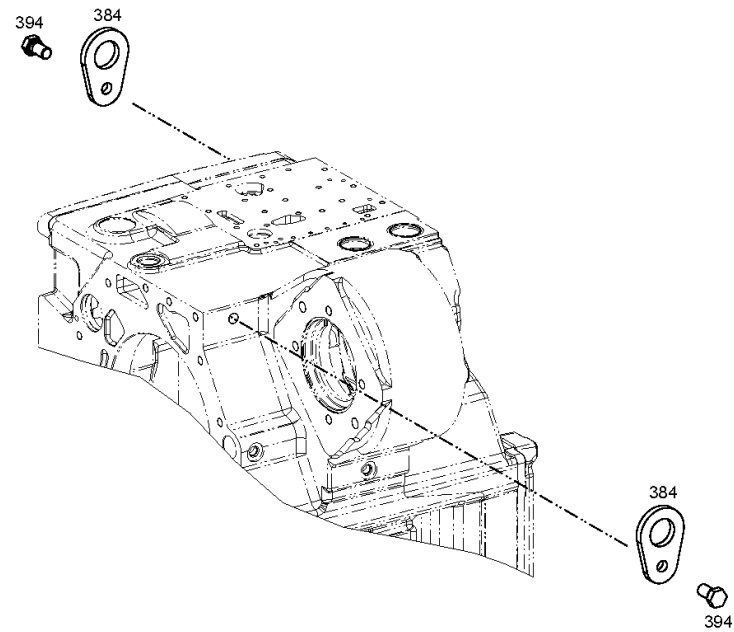
Material number: 4646.054.118

Picture: 464610148400

Material-assembly-group-no: 4646.101.484



4 WG 260 /
TRANSMISSION HOUSING



Picture

Page 1 from 2

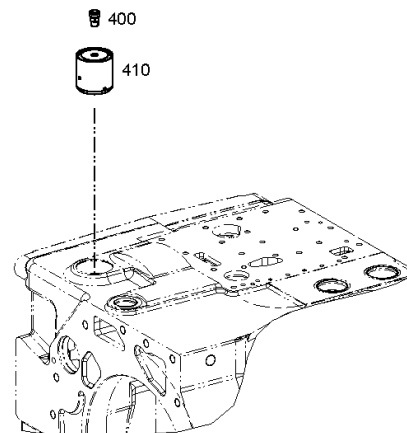
Material number: 4646.054.118

Picture: 464610148600

Material-assembly-group-no: 4646.101.486



4 WG 260 /
TRANSMISSION HOUSING



Picture

Page 2 from 2

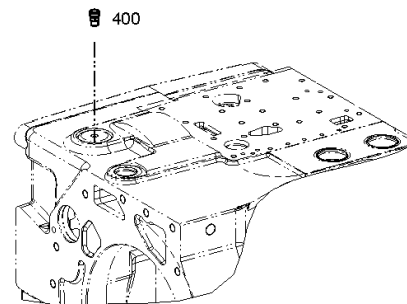
Material number: 4646.054.118

Picture: 464610148680

Material-assembly-group-no: 4646.101.486



4 WG 260 /
TRANSMISSION HOUSING



Picture

Page 1 from 1

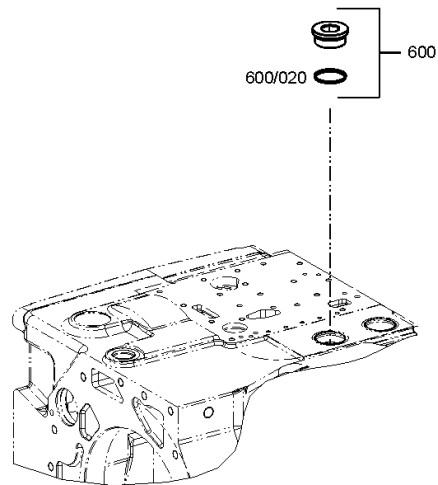
Material number: 4646.054.118

Picture: 464610148800

Material-assembly-group-no: 4646.101.488



4 WG 260 /
TRANSMISSION HOUSING



Picture

Page 1 from 1

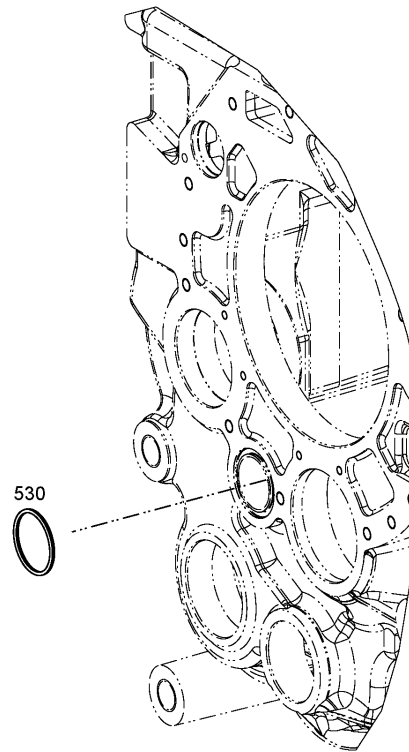
Material number: 4646.054.118

Picture: 464616241600

Material-assembly-group-no: 4646.162.416



4 WG 260 /
OIL PIPE



Picture

Page 1 from 1

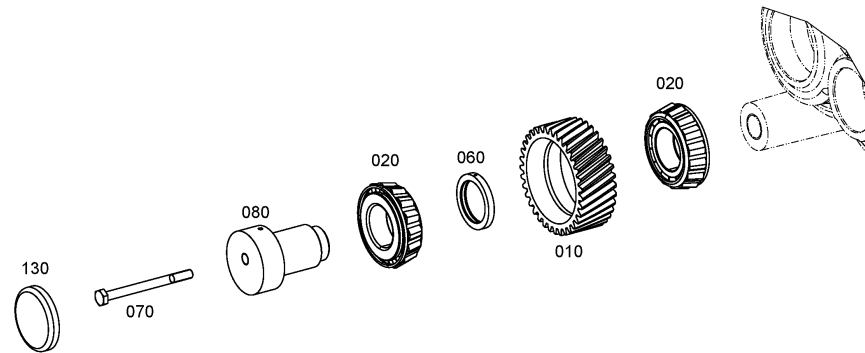
Material number: 4646.054.118

Picture: 464610801400

Material-assembly-group-no: 4646.108.014



4 WG 260 /
COUNTERSHAFT



Picture

Page 1 from 1

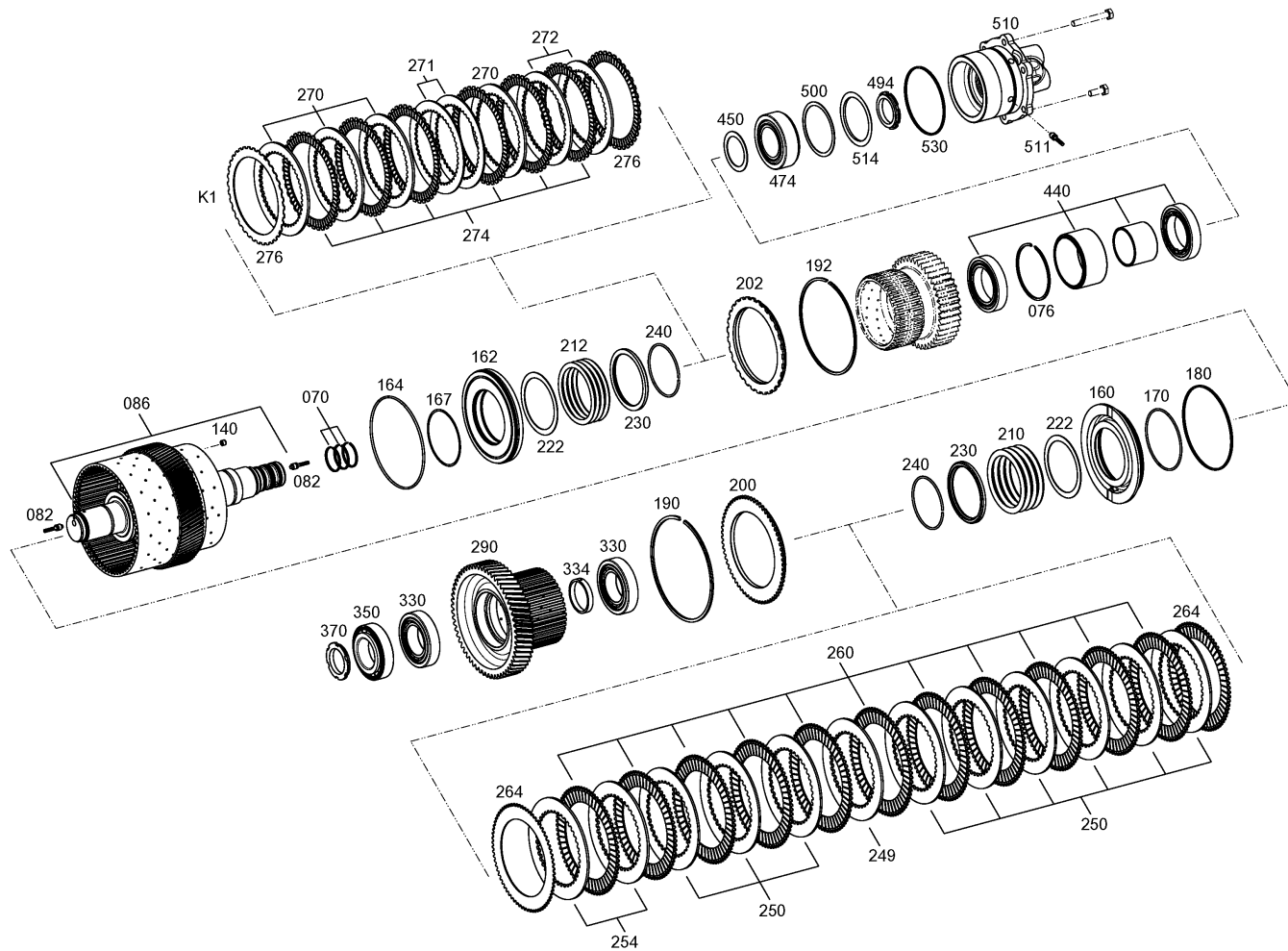
Material number: 4646.054.118

Picture: 464615107300

Material-assembly-group-no: 4646.151.073



4 WG 260 /
COUPLING



Picture

Page 1 from 1

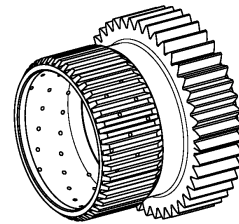
Material number: 4646.054.118

Picture: 464615147100

Material-assembly-group-no: 4646.151.471



4 WG 260 /
COUPLING



400

Picture

Page 1 from 1

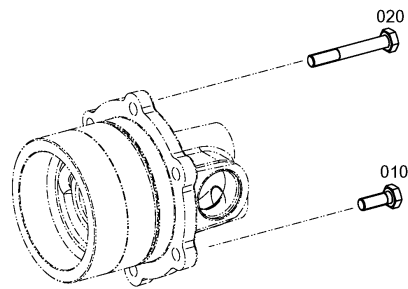
Material number: 4646.054.118

Picture: 464615148600

Material-assembly-group-no: 4646.151.486



4 WG 260 /
COUPLING



Picture

Page 1 from 1

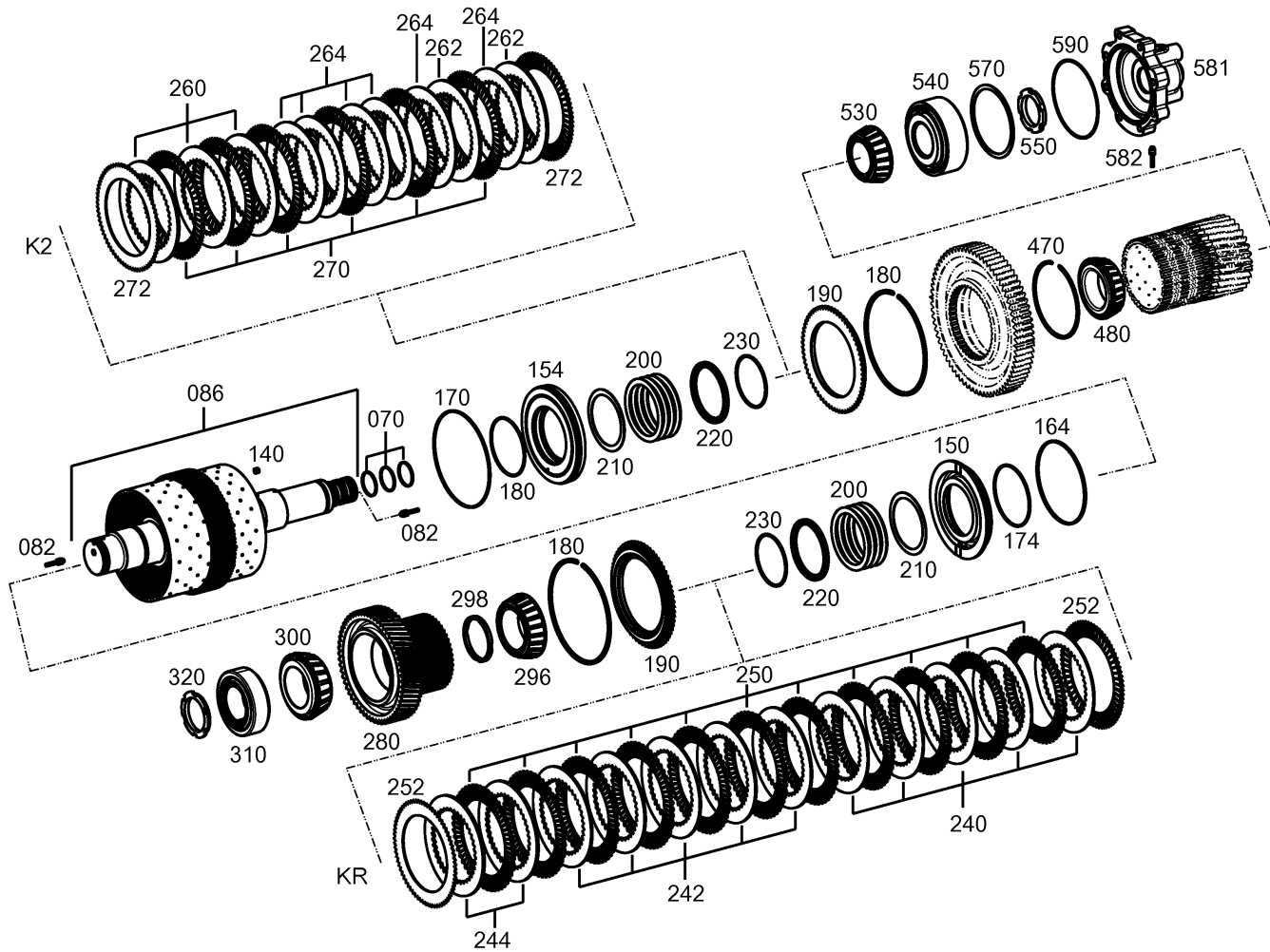
Material number: 4646.054.118

Picture: 464615207900

Material-assembly-group-no: 4646.152.079



4 WG 260 /
COUPLING



Picture

Page 1 from 1

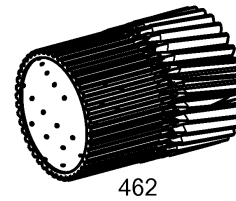
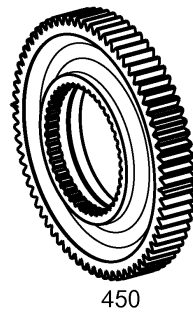
Material number: 4646.054.118

Picture: 464615252300

Material-assembly-group-no: 4646.152.532



4 WG 260 /
COUPLING



Picture

Page 1 from 1

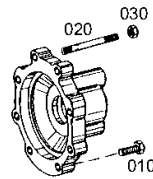
Material number: 4646.054.118

Picture: 464615254800

Material-assembly-group-no: 4646.152.548



4 WG 260 /
COUPLING



Picture

Page 1 from 1

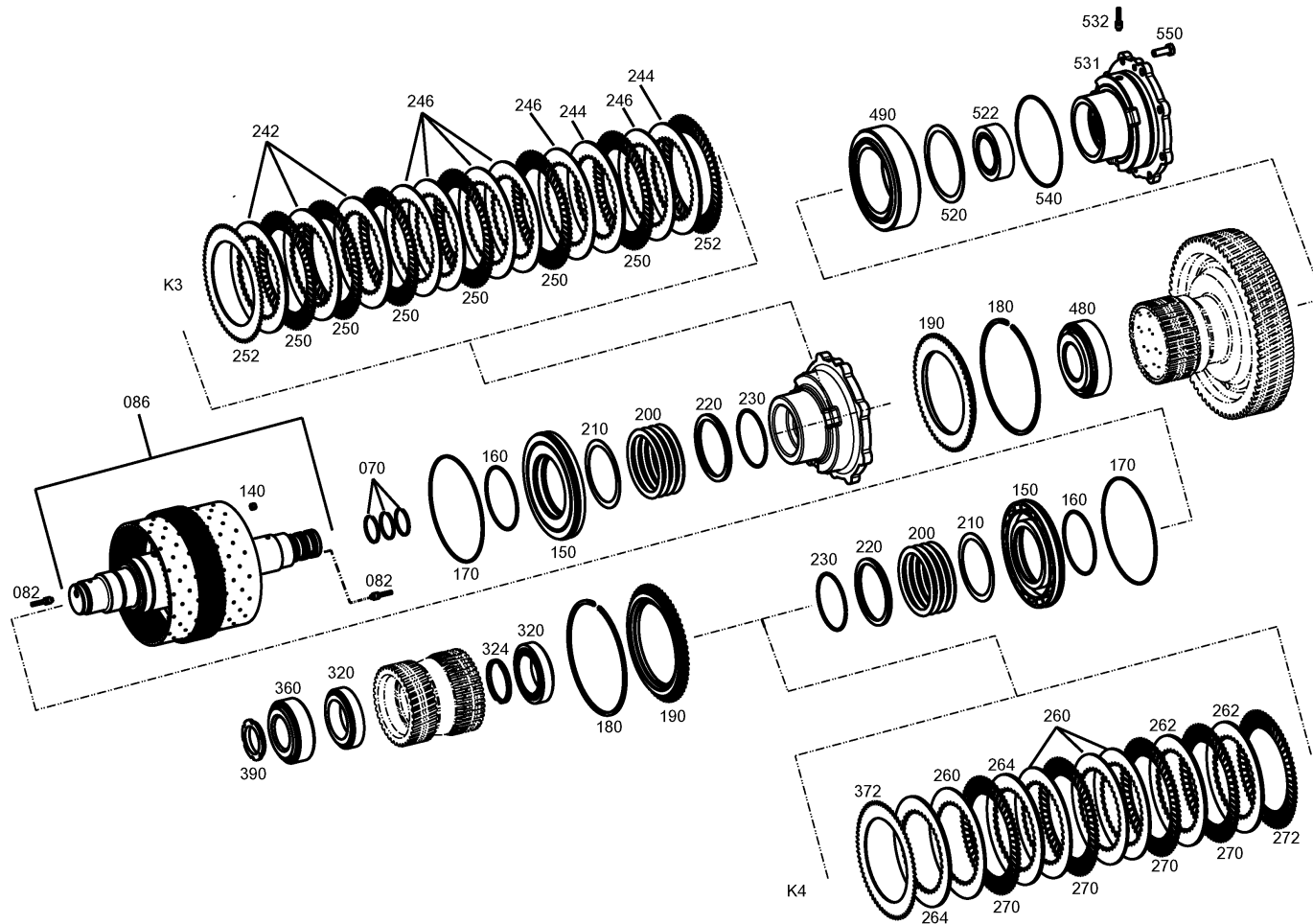
Material number: 4646.054.118

Picture: 464615307200

Material-assembly-group-no: 4646.153.072



4 WG 260 /
COUPLING



Picture

Page 1 from 1

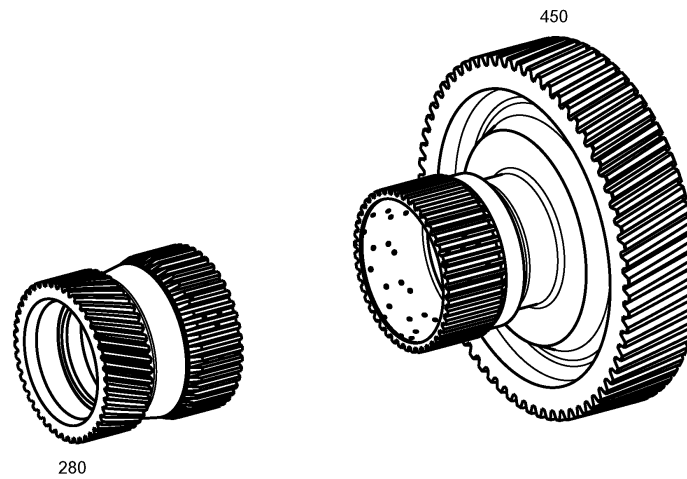
Material number: 4646.054.118

Picture: 464615345700

Material-assembly-group-no: 4646.153.457



4 WG 260 /
COUPLING



Picture

Page 1 from 2

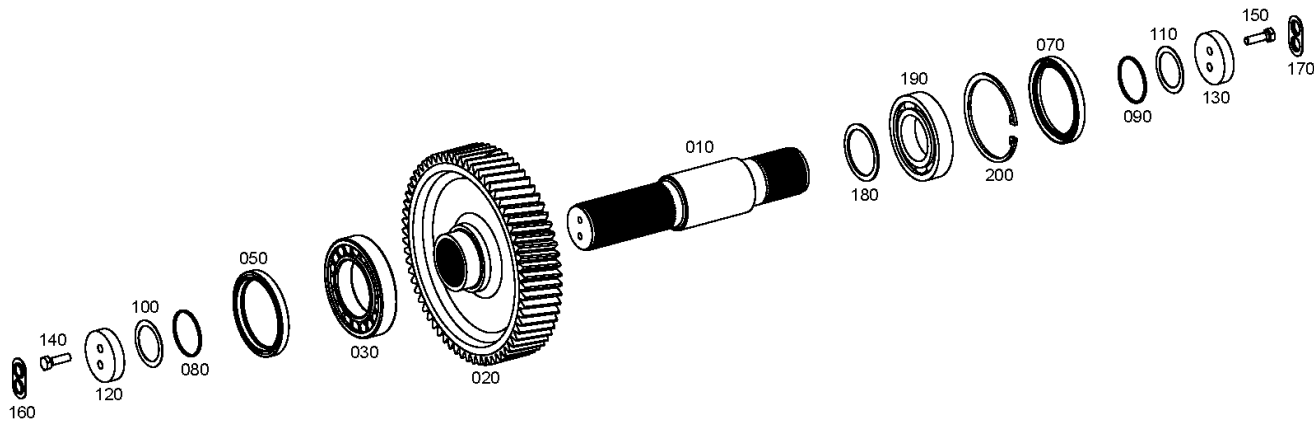
Material number: 4646.054.118

Picture: 464610303700

Material-assembly-group-no: 4646.103.037



4 WG 260 /
OUTPUT



Picture

Page 2 from 2

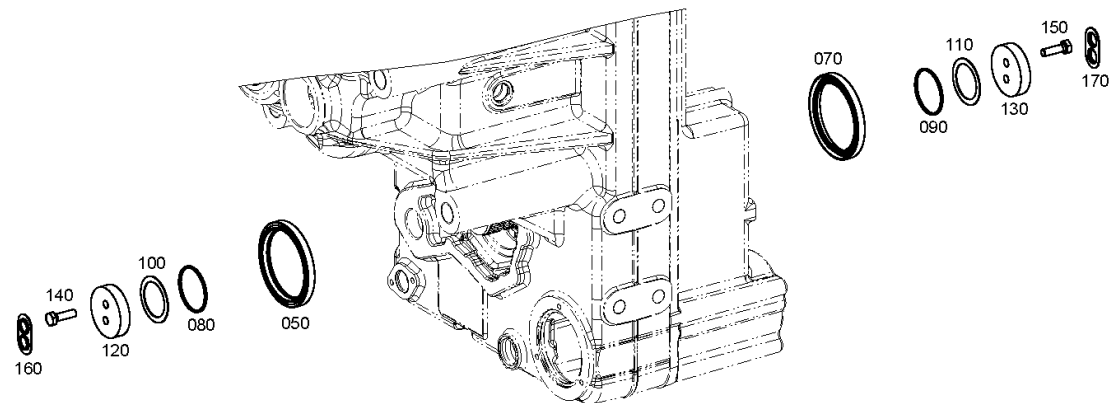
Material number: 4646.054.118

Picture: 464610303780

Material-assembly-group-no: 4646.103.037



4 WG 260 /
OUTPUT



Picture

Page 1 from 1

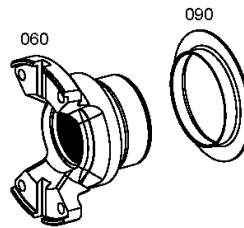
Material number: 4646.054.118

Picture: 464610345600

Material-assembly-group-no: 4646.103.456



4 WG 260 /
OUTPUT



Picture

Page 1 from 1

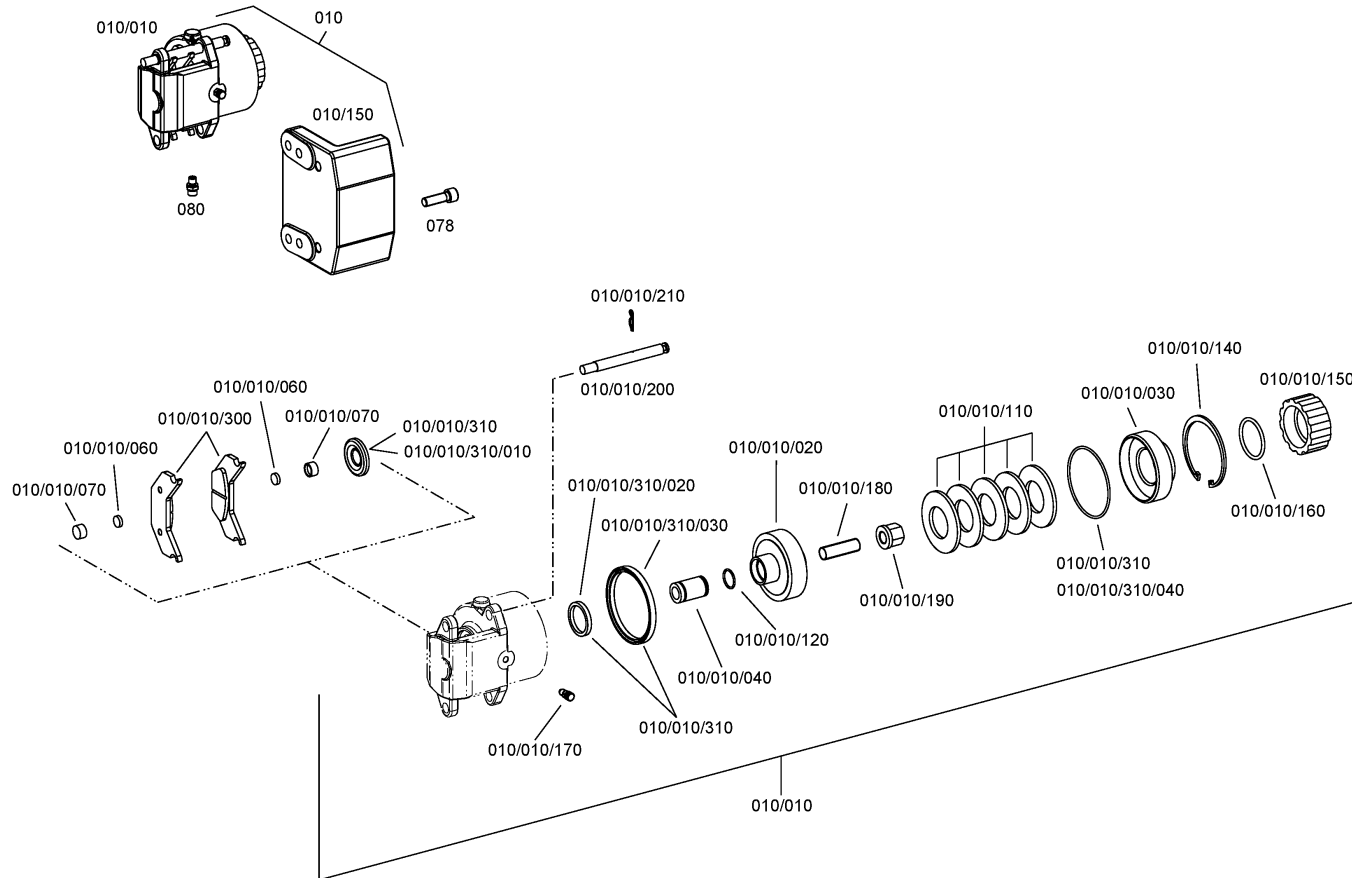
Material number: 4646.054.118

Picture: 464610901900

Material-assembly-group-no: 4646.109.019



4 WG 260 /
PARKING BRAKE



Picture

Page 1 from 1

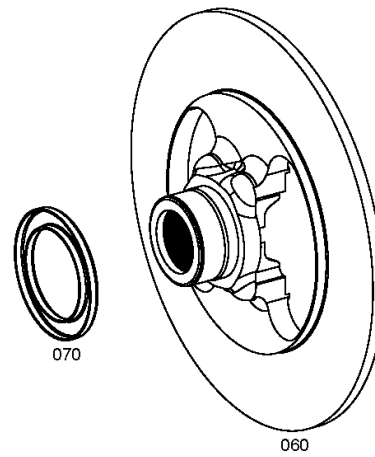
Material number: 4646.054.118

Picture: 464610942300

Material-assembly-group-no: 4646.109.423



4 WG 260 /
PARKING BRAKE



Picture

Page 1 from 1

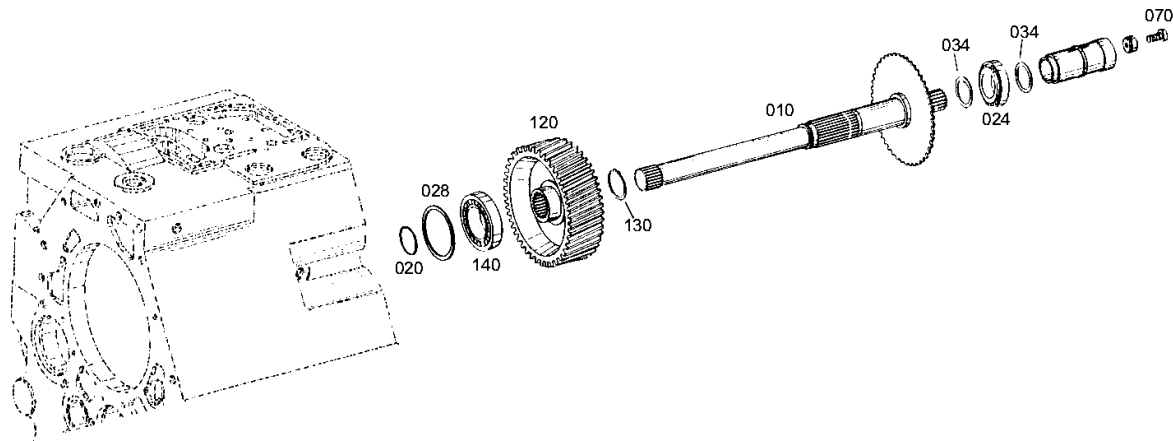
Material number: 4646.054.118

Picture: 464615405700

Material-assembly-group-no: 4646.154.057



4 WG 260 /
POWER TAKE-OFF



Picture

Page 1 from 1

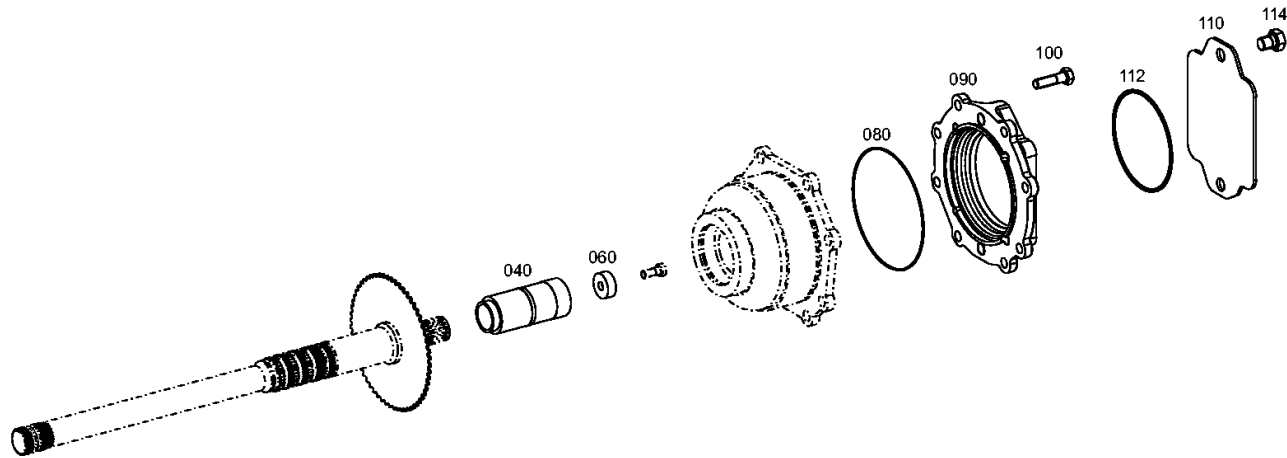
Material number: 4646.054.118

Picture: 464615444000

Material-assembly-group-no: 4646.154.440



4 WG 260 /
POWER TAKE-OFF



Picture

Page 1 from 1

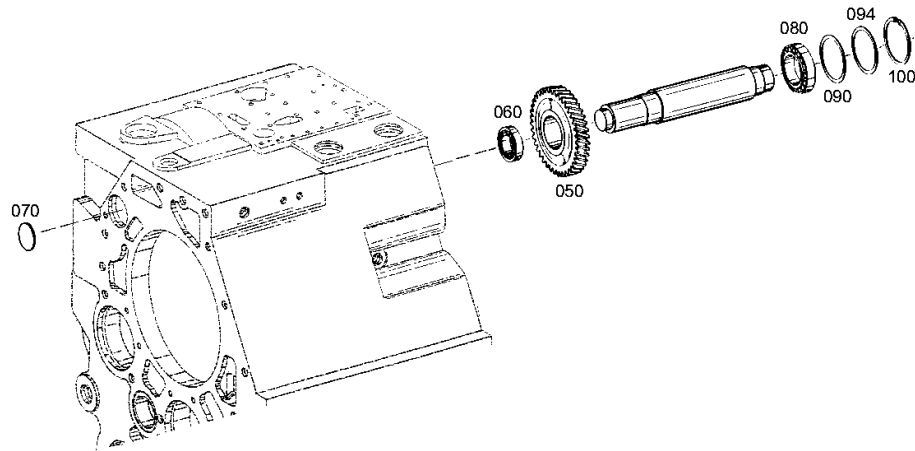
Material number: 4646.054.118

Picture: 464615501000

Material-assembly-group-no: 4646.155.010



4 WG 260 /
POWER TAKE-OFF



Picture

Page 1 from 1

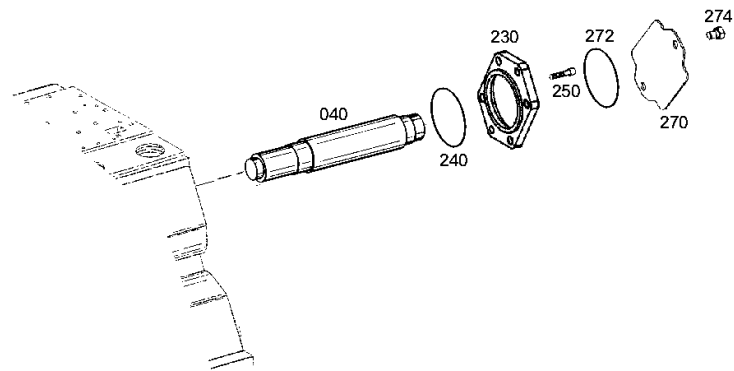
Material number: 4646.054.118

Picture: 464615541400

Material-assembly-group-no: 4646.155.414



4 WG 260 /
POWER TAKE-OFF



Picture

Page 1 from 2

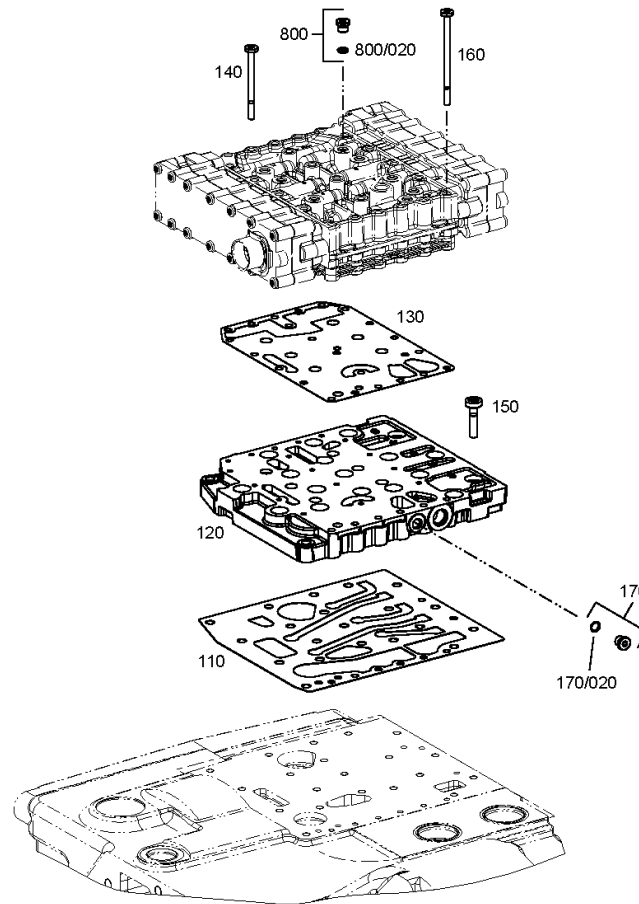
Material number: 4646.054.118

Picture: 464610602200

Material-assembly-group-no: 4646.106.022



4 WG 260 /
SHIFT SYSTEM



Picture

Page 2 from 2

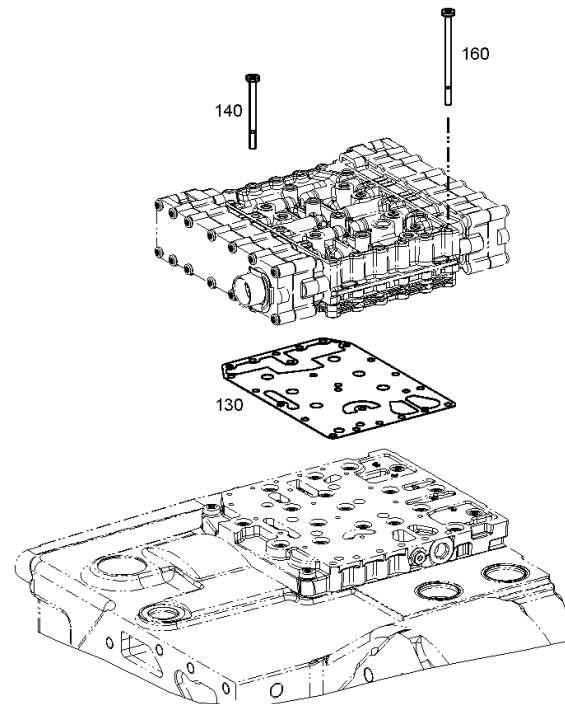
Material number: 4646.054.118

Picture: 464610602280

Material-assembly-group-no: 4646.106.022



4 WG 260 /
SHIFT SYSTEM



Picture

Page 1 from 1

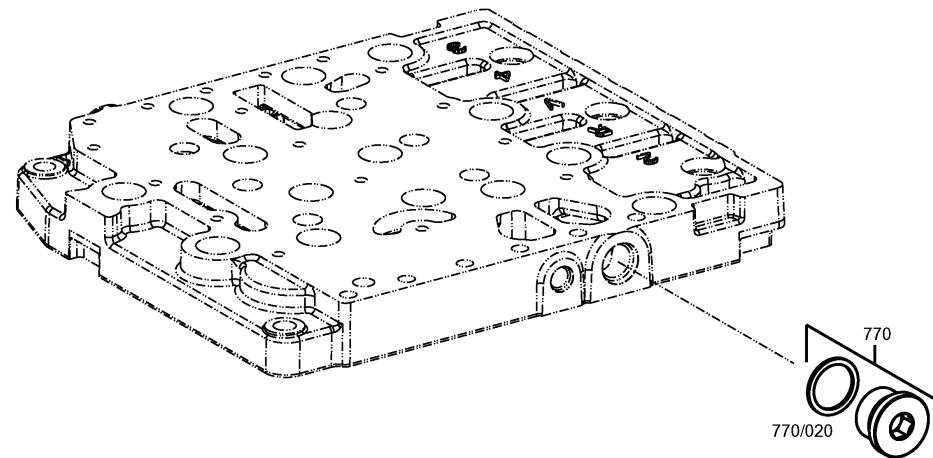
Material number: 4646.054.118

Picture: 465710640100

Material-assembly-group-no: 4657.106.401



4 WG 260 /
SHIFT SYSTEM



Picture

Page 1 from 2

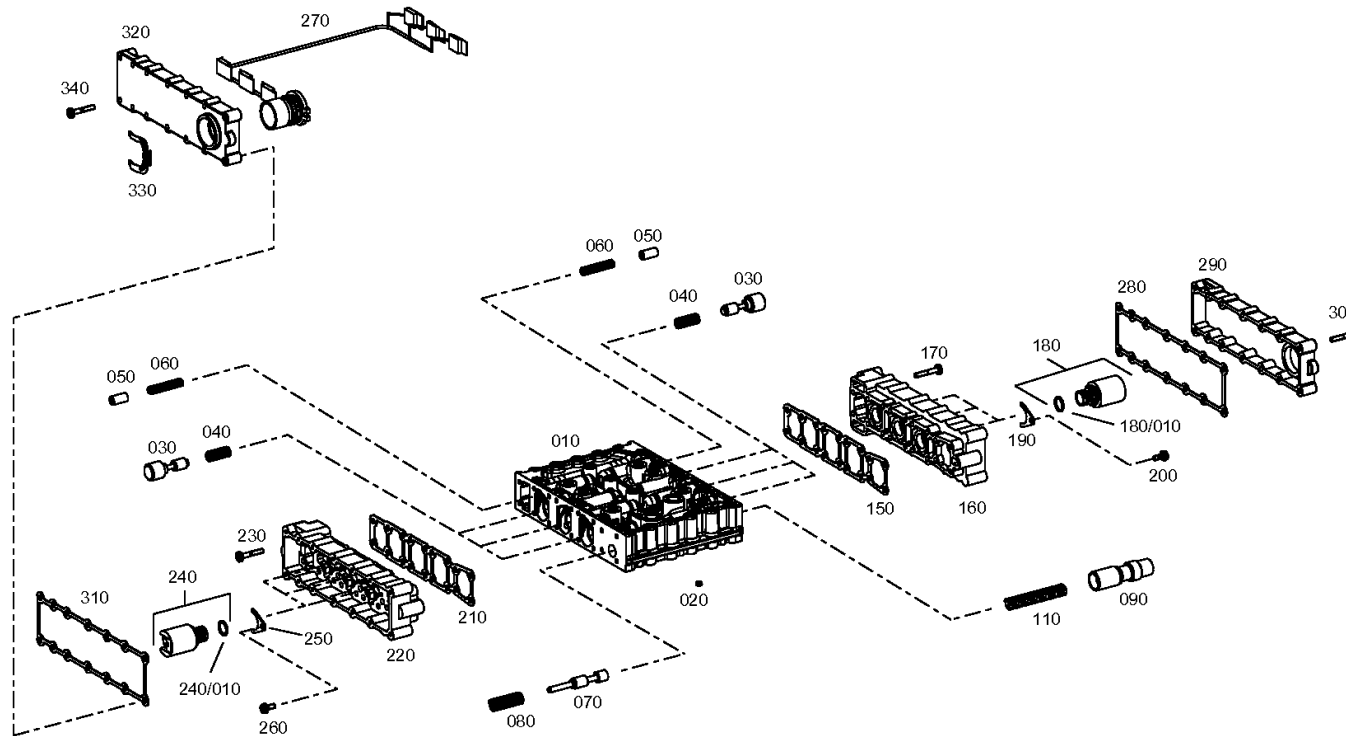
Material number: 4646.054.118

Picture: 465615901901

Material-assembly-group-no: 4656.159.019



4 WG 260 /
SHIFT SYSTEM



Picture

Page 2 from 2

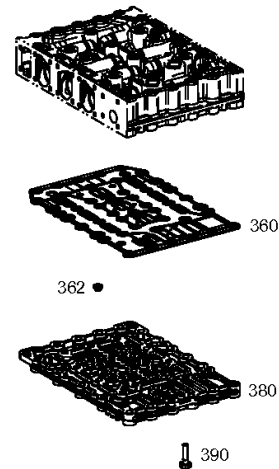
Material number: 4646.054.118

Picture: 465615901902

Material-assembly-group-no: 4656.159.019



4 WG 260 /
SHIFT SYSTEM



Picture

Page 1 from 1

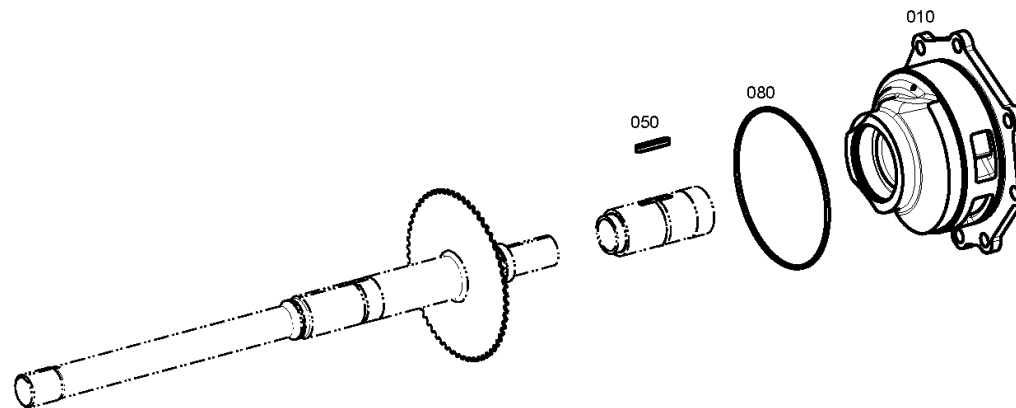
Material number: 4646.054.118

Picture: 464612201200

Material-assembly-group-no: 4646.122.012



4 WG 260 /
PRESSURE OIL PUMP



Picture

Page 1 from 1

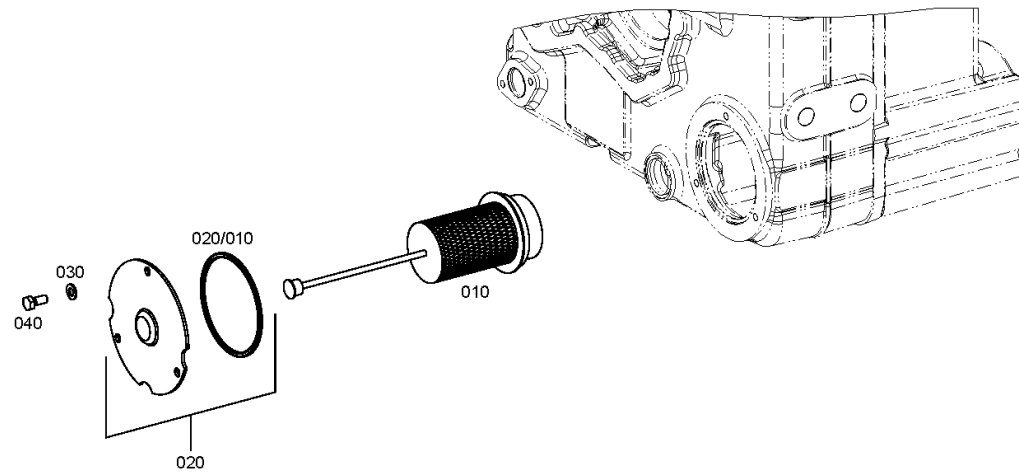
Material number: 4646.054.118

Picture: 464613800400

Material-assembly-group-no: 4646.138.004



4 WG 260 /
FILTER



Picture

Page 1 from 1

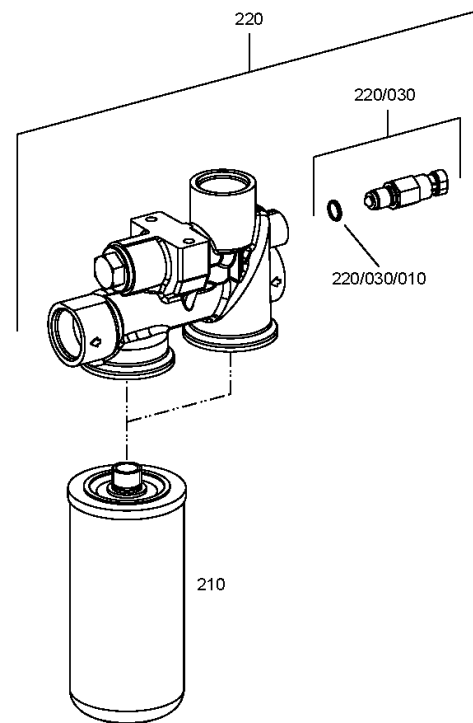
Material number: 4646.054.118

Picture: 464619940600

Material-assembly-group-no: 4646.199.406



4 WG 260 /
LOOSE PARTS



Picture

Page 1 from 1

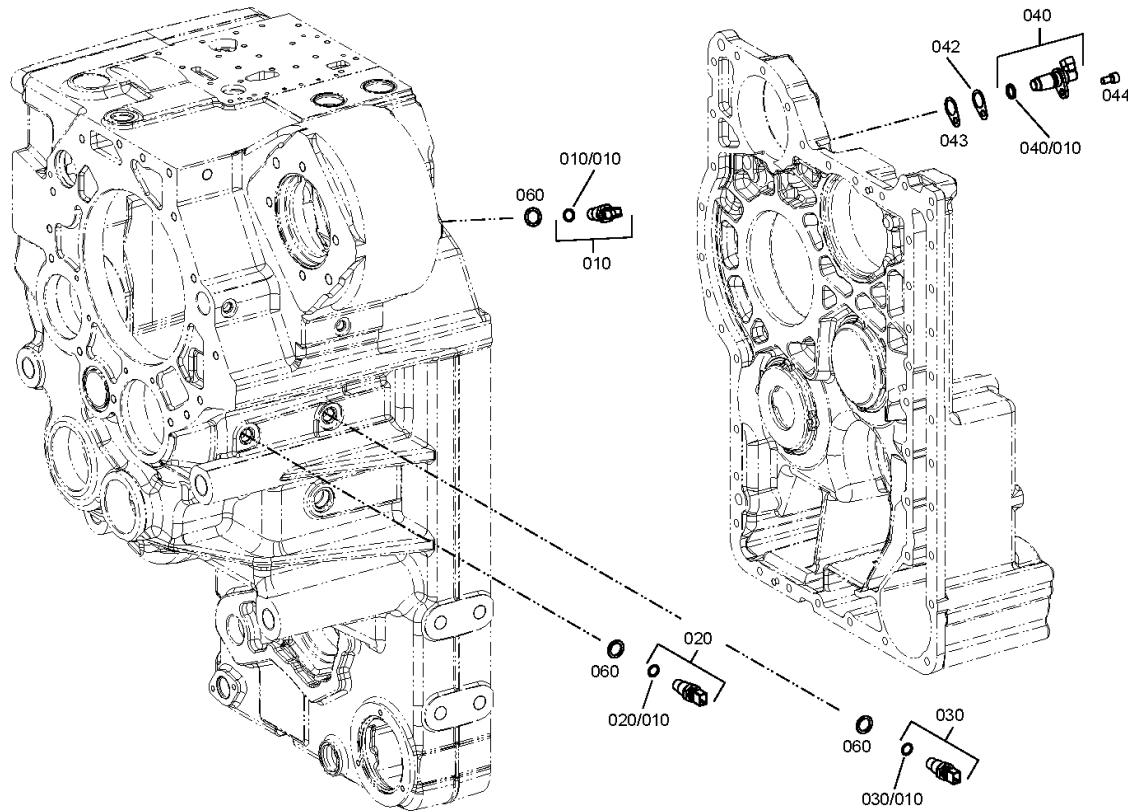
Material number: 4646.054.118

Picture: 464612502350

Material-assembly-group-no: 4646.125.023



4 WG 260 /
INDUCTIVE SENSOR



Picture

Page 1 from 1

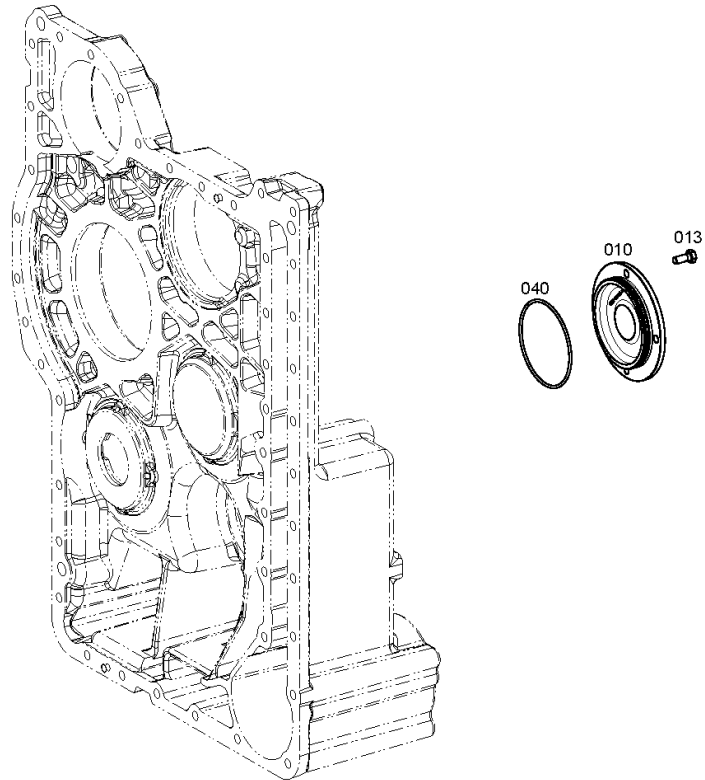
Material number: 4646.054.118

Picture: 464613702400

Material-assembly-group-no: 4646.137.024



4 WG 260 /
EMERGENCY STEERING PUMP



Picture

Page 1 from 1

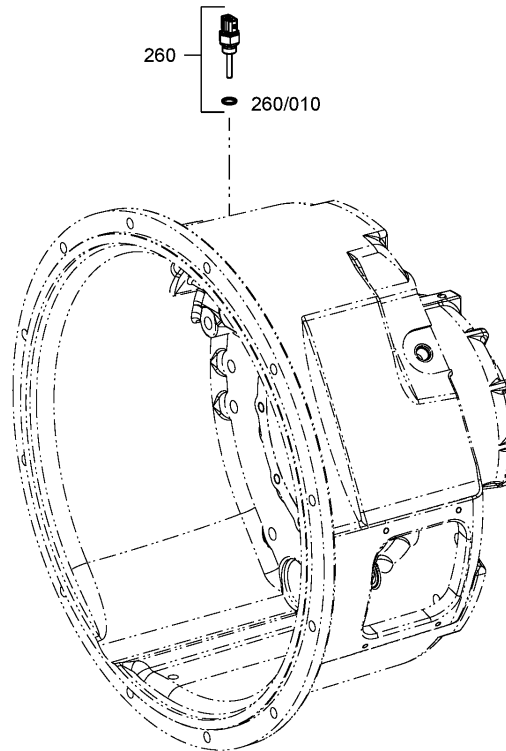
Material number: 4646.054.118

Picture: 464612400600

Material-assembly-group-no: 4646.124.006



4 WG 260 /
TEMPERATURE SENSOR



Picture

Page 1 from 1

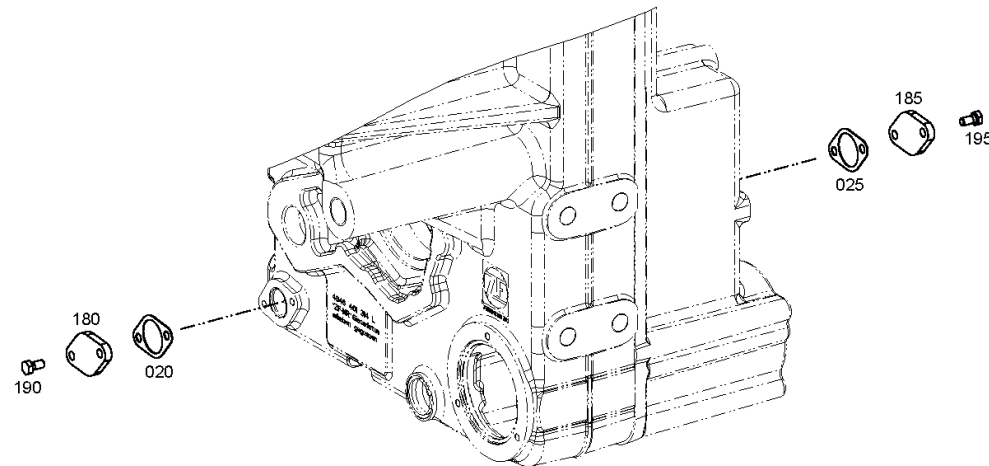
Material number: 4646.054.118

Picture: 464613101000

Material-assembly-group-no: 4646.131.010



4 WG 260 /
FILLER NOZZLE



Picture

Page 1 from 2

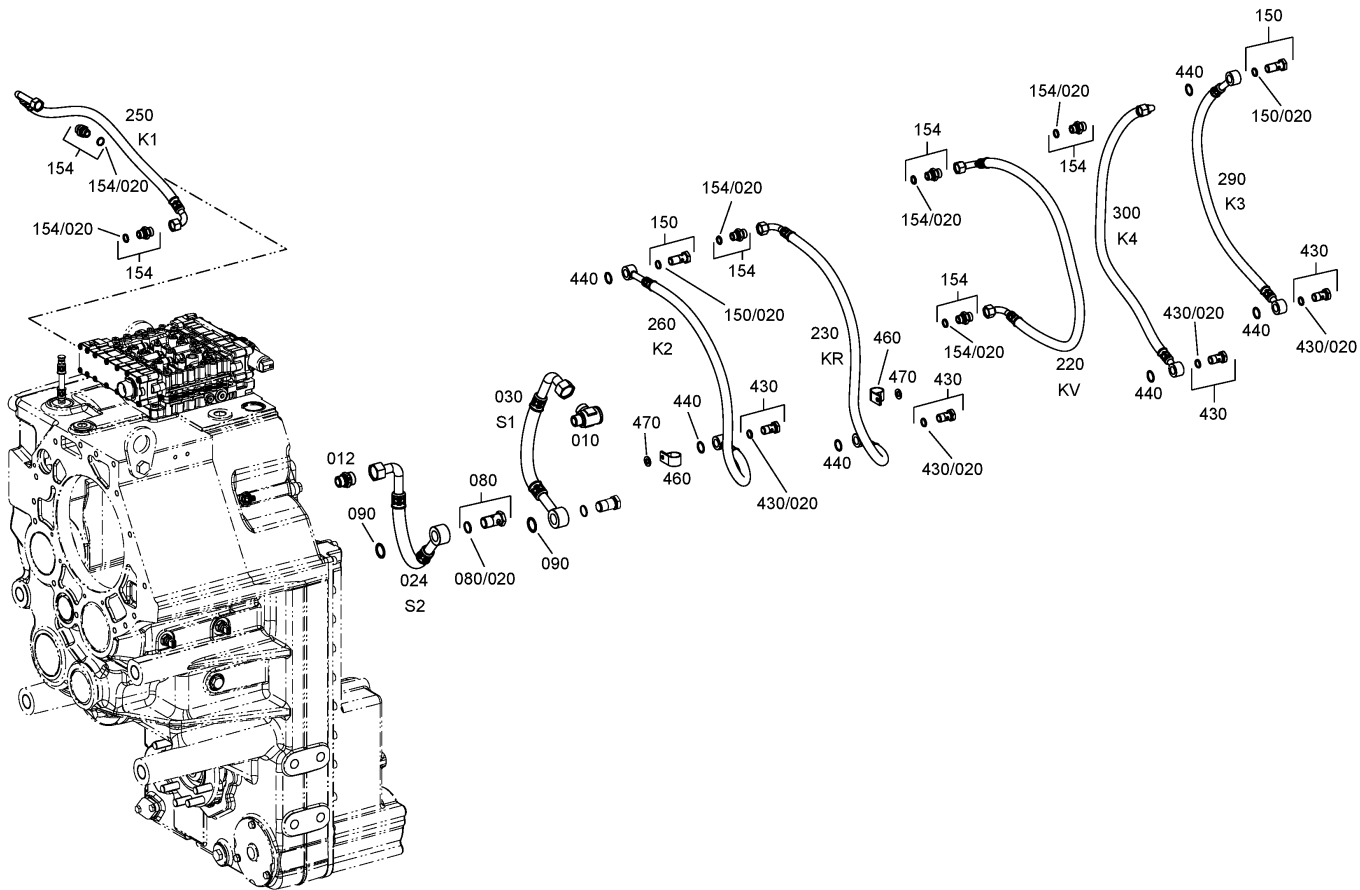
Material number: 4646.054.118

Picture: 464612111601

Material-assembly-group-no: 4646.121.116



4 WG 260 /
OIL PIPE



Picture

Page 2 from 2

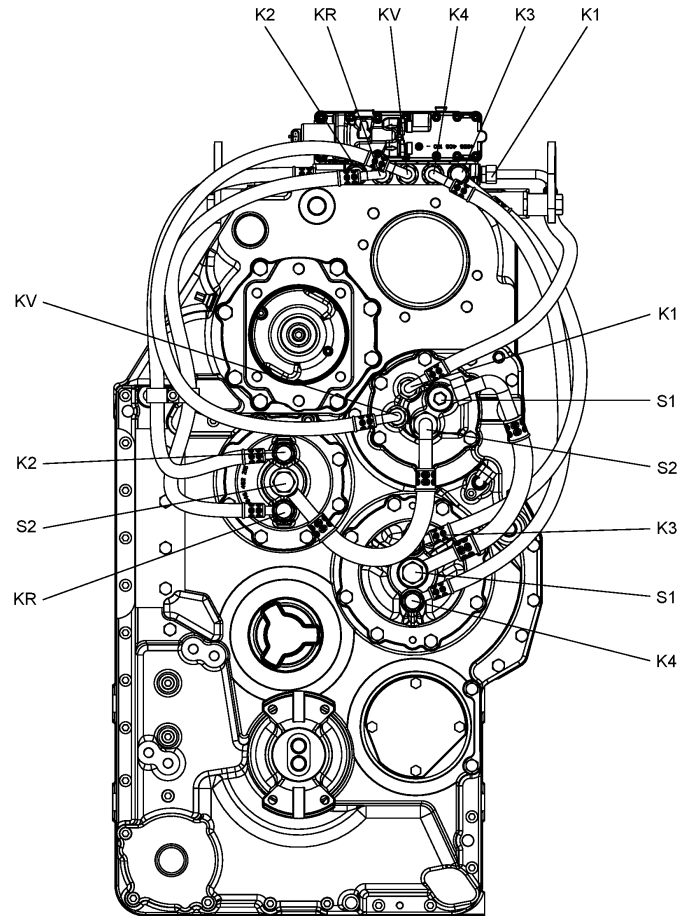
Material number: 4646.054.118

Picture: 464612111602

Material-assembly-group-no: 4646.121.116



4 WG 260 /
OIL PIPE



Picture

Page 1 from 1

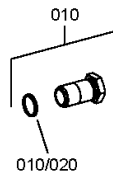
Material number: 4646.054.118

Picture: 464612141600

Material-assembly-group-no: 4646.121.416



4 WG 260 /
OIL PIPE



Picture

Page 1 from 1

Material number: 4646.054.118

Picture: 414313900100

Material-assembly-group-no: 4143.139.001



4 WG 260 /
TYPE PLATE



010

Picture

Page 1 from 1

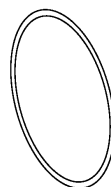
Material number: 4646.054.118

Picture: 464619919100

Material-assembly-group-no: 4646.199.191



4 WG 260 /
LOOSE PARTS



010

Picture

Page 1 from 1

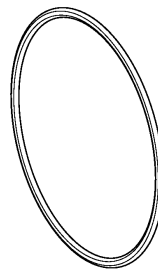
Material number: 4646.054.118

Picture: 464619919200

Material-assembly-group-no: 4646.199.192



4 WG 260 /
LOOSE PARTS



010