



# Spare Parts Catalog

4 WG 260

Material number: 4646.054.151

Current date: 06.10.2021

ZF Friedrichshafen AG  
Hauptverwaltung  
80038 Friedrichshafen  
Deutschland

Telefon: +49 7541 77-0

Telefax: +49 7541 77-908000

[www.zf.com](http://www.zf.com)

zuständiges Werk:  
Passau

# Notes relating to the spare parts catalog

## Setup of the spare parts catalog

- Cover sheet
- Technical Cover (only in SDM print)
- Overview of figures
- Figure
- Associated parts list
- Next figure
- Associated parts list
- ...

## Figure and parts list



## Overview of figures

Bildtafel Figure	Sachnummer Product number	Benennung (Description)	Technische Info Technical info	Description (Benennung)	Menge Quantity	Einheit Unit
068.08.17	1316.170.001	AUSLEGER	WL	SHIFT TURRET	1	Stk
068.08.06	1316.170.031	DECKEL	WL*H-H *VM	COVER	1	Stk
068.08.14	1316.170.808	DECKEL	WL*AUSL+GEH*H-H*HF160N	COVER	1	Stk
08	1316.170.441	ANSCHLUSSTEILE	WL*NG-VORB*RG-SCHL*168N *BAJONETT	CONNECTING PARTS	1	Stk

The "gap" indicates that there is no separate graphics panel (poster) for this assembly  
The parts of this assembly are shown with the same mid-section number on the figure

### 1 Positions and subpositions

Pos.	Sachnummer Product number	Benennung (Description)	Technische Info Technical info	Description (Benennung)	Menge Quantity	Einheit Unit
0370	1315.201.054	RUECKLAUFBOLZEN	KPL.16S151*SG*L= 79	REV.IDLER SHAFT	1	Stk
/0120	0631.329.293	SPANNSTIFT		SLOT. PIN	1	Stk

Positions marked with "/" are the individual items of a completion  
For example: Position 0370 contains a centering pin with the position /0120

### 2 Combinations with standardized parts

Pos.	Sachnummer Product number	Benennung (Description)	Technische Info Technical info	Description (Benennung)	Menge Quantity	Einheit Unit
0630		VERSCHL.SCHR.		SCREW PLUG	1	Stk
	0636.302.067	VERSCHL.SCHR.		SCREW PLUG	1	Stk
	0634.801.249	DICHTRING	A 26 X 31	SEALING RING	1	Stk

The parts list shows the components included in the combination of standardized parts

### 3 Depiction of position/item number on the figure and in the parts list

01.620 - on the figure      01 relates to the assembly in which the position is included. Due to program-related reasons, it is shown on the figure.

0620 - in the parts list

Pos.	Sachnummer Product number	Benennung (Description)	Technische Info Technical info	Description (Benennung)	Menge Quantity	Einheit Unit
0620	0732.040.736	DRUCKFEDER		COMPRESSION SPRING	1	Stk

### 4 \*-Positions

Positions marked with an \* are optional i.e. inclusion in the parts list is not mandatory.  
The following note is shown on the figure

je nach Stücklistenausführung  
depending on spec. number  
\*  
suivant la nomenclature  
secondo la distinta base

### 5 Parts, dotted display

Parts with dotted display on the figure are only used for orientation of other parts

# Technical Cover

Page 1 from 4

Material number: 4646.054.151



4 WG 260 /

Pos.	Information	Amendment number
	CUSTOMER: DOOSAN	
	1.PERFORMANCE CALC.: 4646 709 857	
	VEHICLE DESIGNATION: SMK420A	
	WEIGHT LOADED: 30,371 T	
	WEIGHT EMPTY: 22,181 T	
	ENGINE: DOOSAN DX12, TIER2	
	ENGINE POWER: 219,4 KW	
	SPEED: 2050 RPM	
	INPUT TORQUE: 1327 NM	
	SPEED: 1200 RPM	
	TYRE SIZE: 26,5-25 L3	
	TYRE RADIUS DYN.: 0,817 M	
	AXLE RATIO: 23,333	
	MAX. SPEED: 38,4 KM/H	
	VEHICLE DATA 2 : -----	
	2.PERFORMANCE CALC.: 4646 709 858	
	VEHICLE APPLICATION: SMK420A	
	WEIGHT LOADED: 31,556 T	
	WEIGHT EMPTY: 23,566 T	
	ENGINE: DOOSAN DX12, TIER2	
	ENGINE POWER: 219,4 KW	
	SPEED: 2.050 RPM	
	ENGINE TORQUE: 1.327 NM	
	SPEED: 1.200 RPM	
	TIRES: 26,5-25 L3	
	TYRE RADIUS DYN.: 0,817 M	
	AXLE RATIO: 23,333	
	MAX. SPEED: 37,9 KM/H	
	VEHICLE DATA 3 : -----	
	3.PERFORMANCE CALC.: 4646 709 859	
	VEHICLE APPLICATION: SMK420A	
	WEIGHT LOADED: 33,246 T	
	WEIGHT EMPTY: 25,496 T	

# Technical Cover

Page 2 from 4

Material number: 4646.054.151



4 WG 260 /

Pos.	Information	Amendment number
	ENGINE: DOOSAN DX12, TIER2	
	ENGINE POWER: 219,4 KW	
	SPEED: 2.050 RPM	
	INPUT TORQUE: 1.327 NM	
	SPEED: 1.200 RPM	
	TIRES: 26,5-25 L4	
	TYRE RADIUS DYN.: 0,823 M	
	AXLE RATIO: 23,333	
	MAX. SPEED: 37,3 KM/H	
	PRODUCT DESCRIPTION: ZF-ERGOPOWER L	
	TRANSMISSION TYPE: 4 WG 260	
	DROP CENTER DISTANCE: 575 MM	
	PRODUCTION LOCATION: PASSAU	
	VEHICLE: WHEEL LOADER	
	1. GEAR FORWARD: 3,731	
	2. GEAR FORWARD: 2,207	
	3. GEAR FORWARD: 0,970	
	4. GEAR FORWARD: 0,625	
	1. GEAR REVERSE: 3,731	
	2. GEAR REVERSE: 2,207	
	3. GEAR REVERSE: 0,970	
	NUMBER OF PULSES ENGIN: 60	
	NUMBER OF PULSES TURBINE: 59	
	NUMBER OF PULSES MRK: 91	
	NUMBER OF PULSES OUTPUT: 64	
	SHIFTED CLUTCHES 1G.KV/K1 2G.KV/K2 3G.KV/K3	
	SHIFTED COUPLING 4G.K4/K3	
	TYPE PLATE: DOOSAN	
	CONVERTER: W 370	
	CONVERTER PART NO.: 037 H 054	
	LOCK-UP CLUTCH: WITHOUT	
	STALL TORQUE RATIO: 3,09	
	TORQUE CONVERTER ABSORPTION: 188 NM	

# Technical Cover

Page 3 from 4

Material number: 4646.054.151



4 WG 260 /

Pos.	Information	Amendment number
	STATOR FREEWHEEL: WITHOUT	
	ENGINE INPUT: ENGINE MOUNTED WITH DIAPHRAGM	
	ENGINE: DOOSAN	
	HOLE PATTERN CONVERTER HOUSING DIAMETER 11	
	CONNECTION: HOLE	
	BOLT CIRCLE: 428,6 MM	
	ENGINE-CONNECTION: SAE 1 4646 500 352	
	OUTPUT: STANDARD	
	GEAR BOX SUMP STANDARD	
	OUTPUT FLANGE CONVERTER SIDE: MECH 8,5 C	
	OUTPUT PTO SIDE: WITH PARKING BRAKE	
	DISC BRAKE: SAHR FSG 110	
	RELEASE PRESSURE: 120 - 150 BAR	
	MEDIUM: HYDRAULIC OIL DIN 51524 PART 2	
	CONNECTION BRAKE PRESSURE: JIC 9/16-18	
	OUTPUT FLANGE PTO SIDE: MECH 8,5 C	
	VIBRATION ABSORBER WITHOUT ABSORBER	
	1.POWER TAKE OFF: -----	
	PTO RATIO 1	
	1.PTO FLANGE: SAE C - C 2/4 HOLE (M16/M14)	
	DRIVER / PROFILE: SAE C - C 12/24 DP 17 Z	
	2. POWER TAKE OFF: -----	
	RATIO 2 PTO 1,05	
	2.PTO FLANGE: SAE C 2 HOLE M16 * 4 HOLE M14	
	VERSION SHORT VERSION 0 MM	
	DRIVER / PROFILE: SAE C 12/24 DP 14 T	
	GEAR CHANGE CONTROL: ZF-ERGOSHIFT/ PROP VALVE	
	VOLTAGE: 24 VOLT	
	SETTING SPECIFICATION: 4657.700.099	
	SPEED CONTROL: CONNECTION VIA EST	
	OIL LEVEL TUBE: WITHOUT	
	OIL DIPSTICK: WITHOUT	
	FILTER INSTALLATION: SEPARATE MOUNTED	

# Technical Cover

Page 4 from 4

Material number: 4646.054.151



4 WG 260 /

Pos.	Information	Amendment number
	PRES. DROP SWITCH: CLOSING SWITCH	
	ADAPTER WITHOUT	
	EMERGENCY STEERING PUMP: WITHOUT	
	TEMPERATURE SENSOR T/C: WITH (VIA EST )	
	ELECTRIC PARTS ORDER: SEPARATE ORDER	
	SEPARATE ORDER: 4646 185 047	
	TCU S. SCD 002000008656	
	CONTROL UNIT: EST 37A	
	SOFTWARE OPTIONS ENGINE DE-RATING	
	POWERINCH	
	ERGOTRACTION	
	GEAR SELECTOR: DW 3	
	2ND GEAR SELECTOR: WITHOUT	
	DISPLAY: FOR INBOARD MOUNTING	
	LOAD SENSOR: WITHOUT	
	WIRING: WITHOUT	
	OIL CAPACITY TRANSM.: CA. 32 LITRE	
	OIL FILLING TRANSM.: WITHOUT	
	OIL GRADE TRANSM.: OIL SPECIFICATION TE ML 03	
	PAINTING: PRIMING	
	COLOR: BLACK RAL 9005	
	DOCUMENTATION GEAR BOX: -----	
	SECTION DRAWING: 4646 055 012	
	INSTALLATION DRAWING: 4646 654 151	
	GEARBOX DIAGRAM: 4646 700 384	
	OIL CIRCUIT DIAGRAM: 4646 700 291	
	INSTALL. INSTRUCTIONS: 0000 702 951	
	DRAWING 6009 665 002	
	DRAWING GEAR SEL. 1: 6006 630 033	
	CONNECTION DIAGRAM: 6006 700 564	
	CONNECTION DIAGRAM: S. SOFTWARE CONTROL DOC. (SCD)	
	DRAWING DISPLAY: 6040 603 007	

# Assembly group overview

Page 1 from 3

Material number: 4646.054.151



4 WG 260 /

Picture	Pos.	Material number	Name	Quantity	Amend. no.	Techn. Info.
464613001100	270	4646.130.011	ENGINE CONNECTION	1		
416603707400	500	4166.037.074	CONVERTER	1		
464610204500	30	4646.102.045	INPUT	1		
464610242300	35	4646.102.423	INPUT	1		
464610118900	10	4646.101.189	TRANSMISSION HOUSING	1		
464610148400	14	4646.101.484	TRANSMISSION HOUSING	1		
464610148600	12	4646.101.486	TRANSMISSION HOUSING	1		
464610148800	16	4646.101.488	TRANSMISSION HOUSING	1		
464616241600	20	4646.162.416	OIL PIPE	1		
464610801400	150	4646.108.014	COUNTERSHAFT	1		
464615107300	350	4646.151.073	COUPLING	1		
464615147100	355	4646.151.471	COUPLING	1		
464615148600	352	4646.151.486	COUPLING	1		
464615207900	360	4646.152.079	COUPLING	1		
464615253200	365	4646.152.532	COUPLING	1		
464615254800	367	4646.152.548	COUPLING	1		

# Assembly group overview

Page 2 from 3



4 WG 260 /

Material number: 4646.054.151

Picture	Pos.	Material number	Name	Quantity	Amend. no.	Techn. Info.
464615307200	370	4646.153.072	COUPLING	1		
464615345700	375	4646.153.457	COUPLING	1		
464610303700	50	4646.103.037	OUTPUT	1		
464610345600	60	4646.103.456	OUTPUT	1		
464610901900	170	4646.109.019	PARKING BRAKE	1		
464610942300	70	4646.109.423	PARKING BRAKE	1		
464615406900	380	4646.154.069	POWER TAKE-OFF	1		
464615444800	390	4646.154.448	POWER TAKE-OFF	1		
464615501000	400	4646.155.010	POWER TAKE-OFF	1		
464615541500	410	4646.155.415	POWER TAKE-OFF	1		
464610602200	110	4646.106.022	SHIFT SYSTEM	1		
465615901901	120	4656.159.019	SHIFT SYSTEM	1		
465710640100	115	4657.106.401	SHIFT SYSTEM	1		
464612201200	225	4646.122.012	PRESSURE OIL PUMP	1		
464613800400	330	4646.138.004	FILTER	1		
464619940600	335	4646.199.406	LOOSE PARTS	1		



# Assembly group overview

Page 3 from 3

Material number: 4646.054.151



4 WG 260 /

Picture	Pos.	Material number	Name	Quantity	Amend. no.	Techn. Info.
464612502350	250	4646.125.023	INDUCTIVE SENSOR	1		
464613702400	310	4646.137.024	EMERGENCY STEERING PUMP	1		
464612400600	235	4646.124.006	TEMPERATURE SENSOR	1		
464613101000	290	4646.131.010	FILLER NOZZLE	1		
464612110100	210	4646.121.101	OIL PIPE	1		
464612141600	215	4646.121.416	OIL PIPE	1		
464619941500	480	4646.199.415	LOOSE PARTS	1		
464618504700	490	4646.185.047	ACCESSORIES	1		
414313901900	18	4143.139.019	TYPE PLATE	1		

# Picture

Page 1 from 1

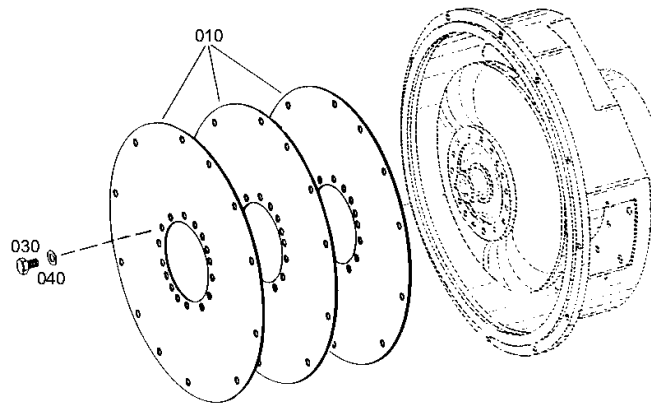
Material number: 4646.054.151

Picture: 464613001100

Material-assembly-group-no: 4646.130.011



4 WG 260 /  
ENGINE CONNECTION



# Picture

Page 1 from 1

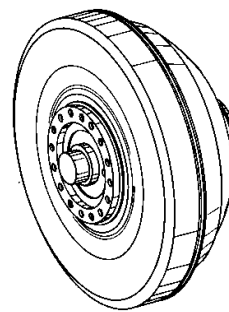
Material number: 4646.054.151

Picture: 416603707400

Material-assembly-group-no: 4166.037.074



4 WG 260 /  
CONVERTER



010

# Picture

Page 1 from 1

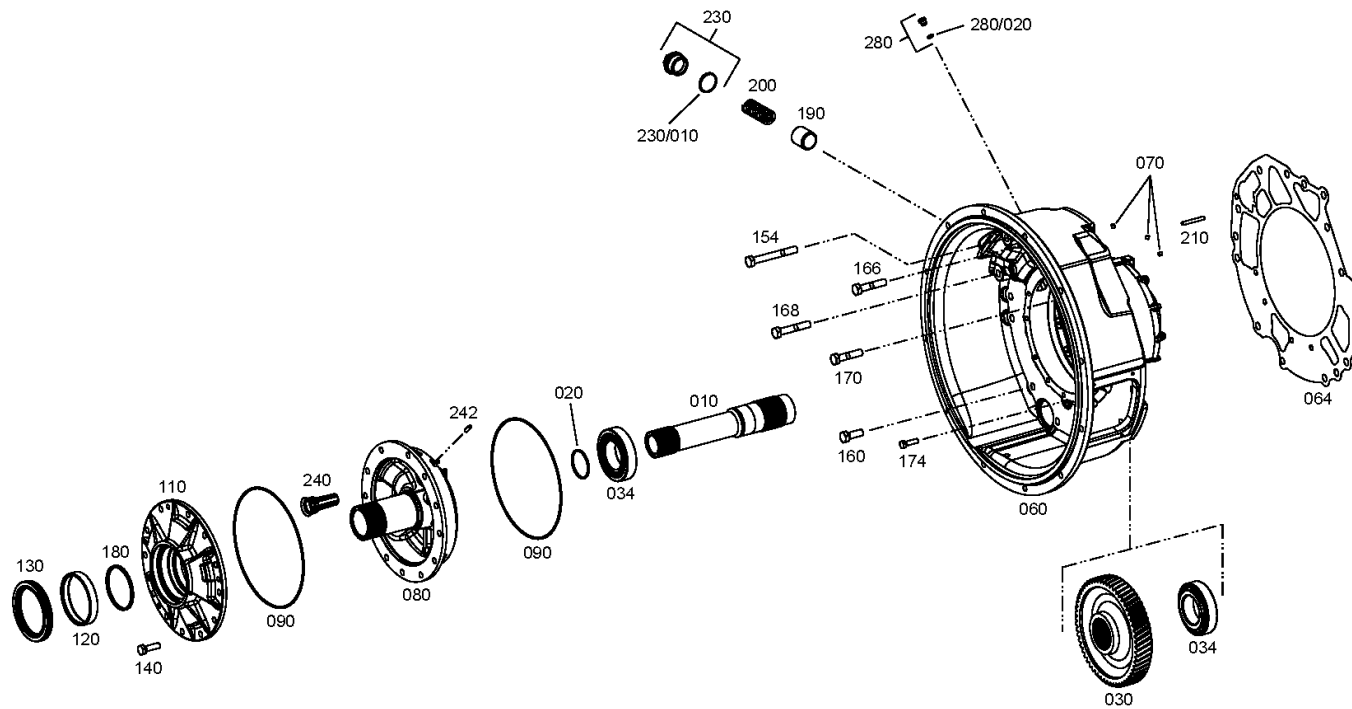
Material number: 4646.054.151

Picture: 464610204500

Material-assembly-group-no: 4646.102.045



4 WG 260 /  
INPUT



# Picture

Page 1 from 1

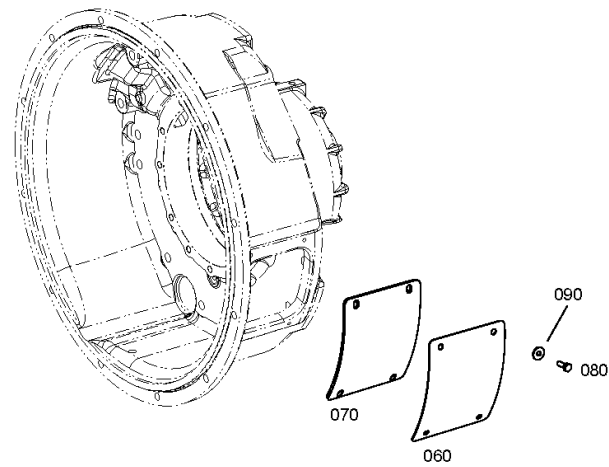
Material number: 4646.054.151

Picture: 464610242300

Material-assembly-group-no: 4646.102.423



4 WG 260 /  
INPUT



# Picture

Page 1 from 1

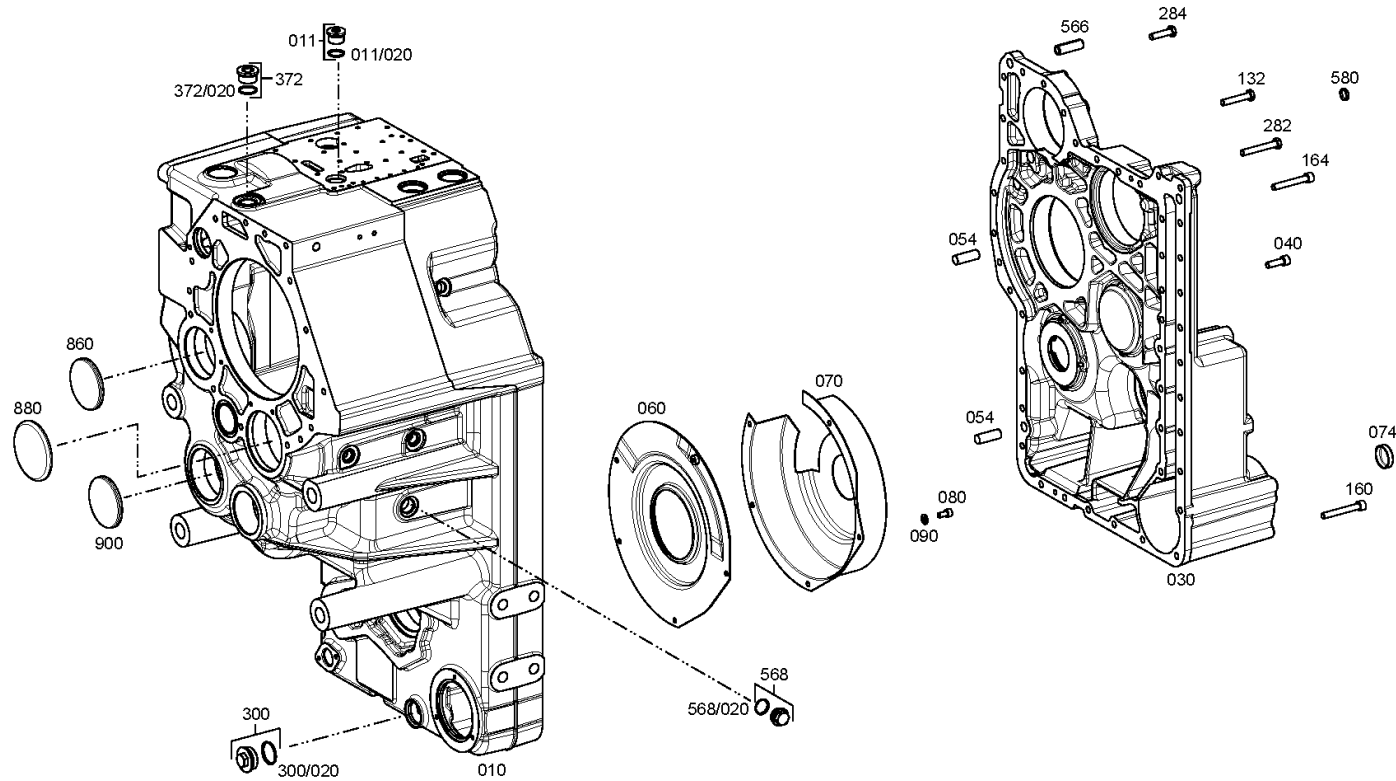
Material number: 4646.054.151

Picture: 464610118900

Material-assembly-group-no: 4646.101.189



4 WG 260 /  
TRANSMISSION HOUSING



# Picture

Page 1 from 1

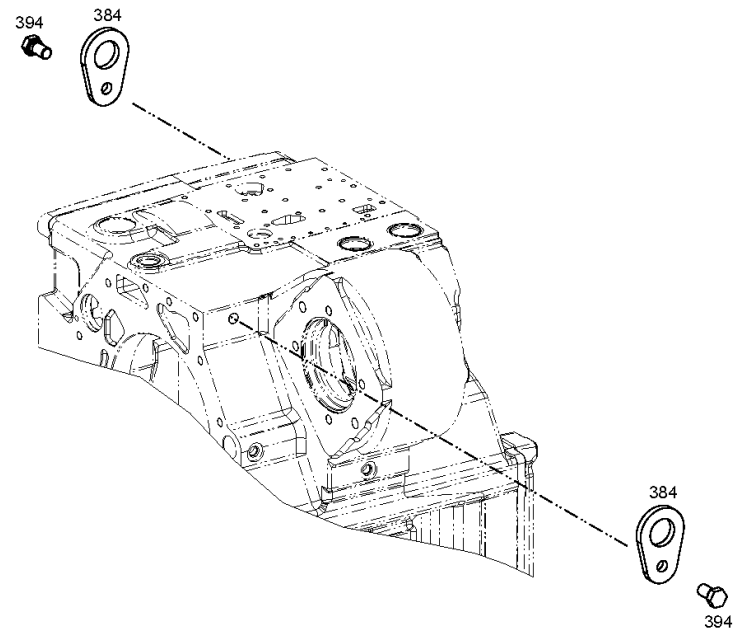
Material number: 4646.054.151

Picture: 464610148400

Material-assembly-group-no: 4646.101.484



4 WG 260 /  
TRANSMISSION HOUSING



# Picture

Page 1 from 1

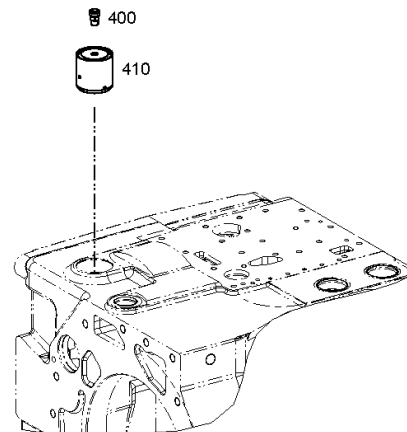
Material number: 4646.054.151

Picture: 464610148600

Material-assembly-group-no: 4646.101.486



4 WG 260 /  
TRANSMISSION HOUSING





# Picture

Page 1 from 1

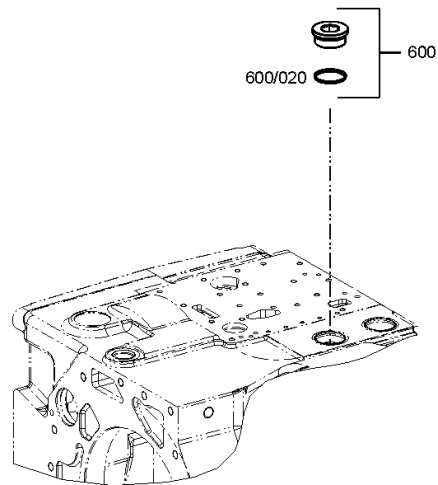
Material number: 4646.054.151

Picture: 464610148800

Material-assembly-group-no: 4646.101.488



4 WG 260 /  
TRANSMISSION HOUSING



# Picture

Page 1 from 1

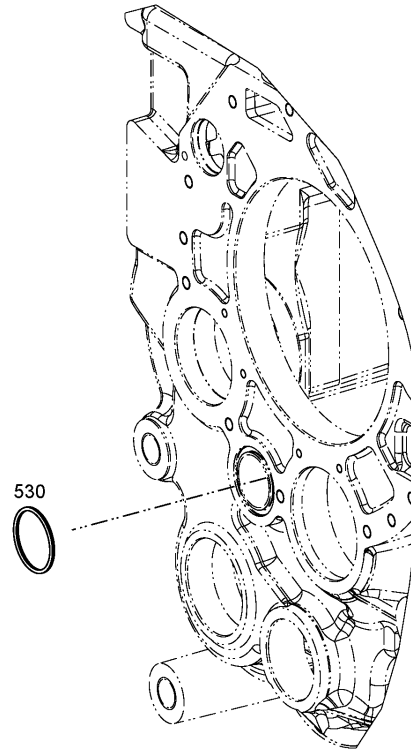
Material number: 4646.054.151

Picture: 464616241600

Material-assembly-group-no: 4646.162.416



4 WG 260 /  
OIL PIPE



# Picture

Page 1 from 1

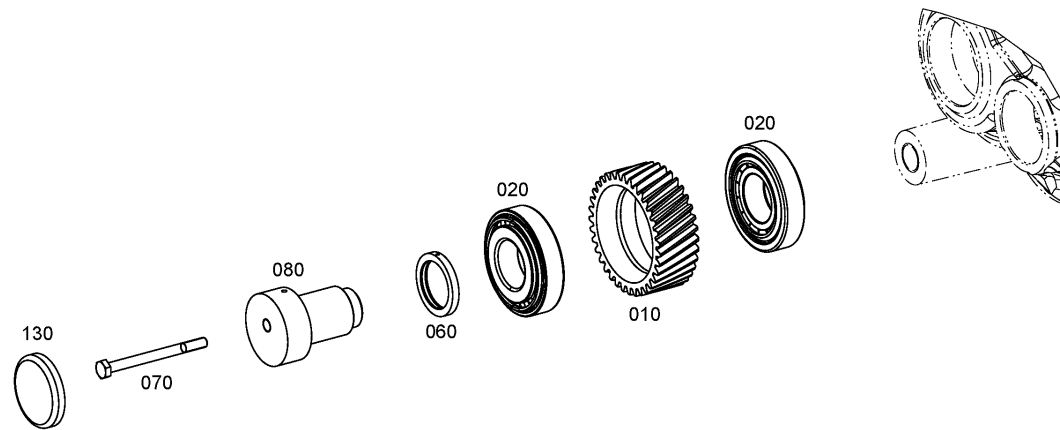
Material number: 4646.054.151

Picture: 464610801400

Material-assembly-group-no: 4646.108.014



4 WG 260 /  
COUNTERSHAFT





# Picture

Page 1 from 1

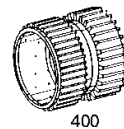
Material number: 4646.054.151

Picture: 464615147100

Material-assembly-group-no: 4646.151.471



4 WG 260 /  
COUPLING



400

# Picture

Page 1 from 1

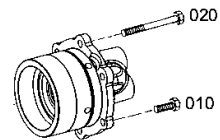
Material number: 4646.054.151

Picture: 464615148600

Material-assembly-group-no: 4646.151.486



4 WG 260 /  
COUPLING



# Picture

Page 1 from 1

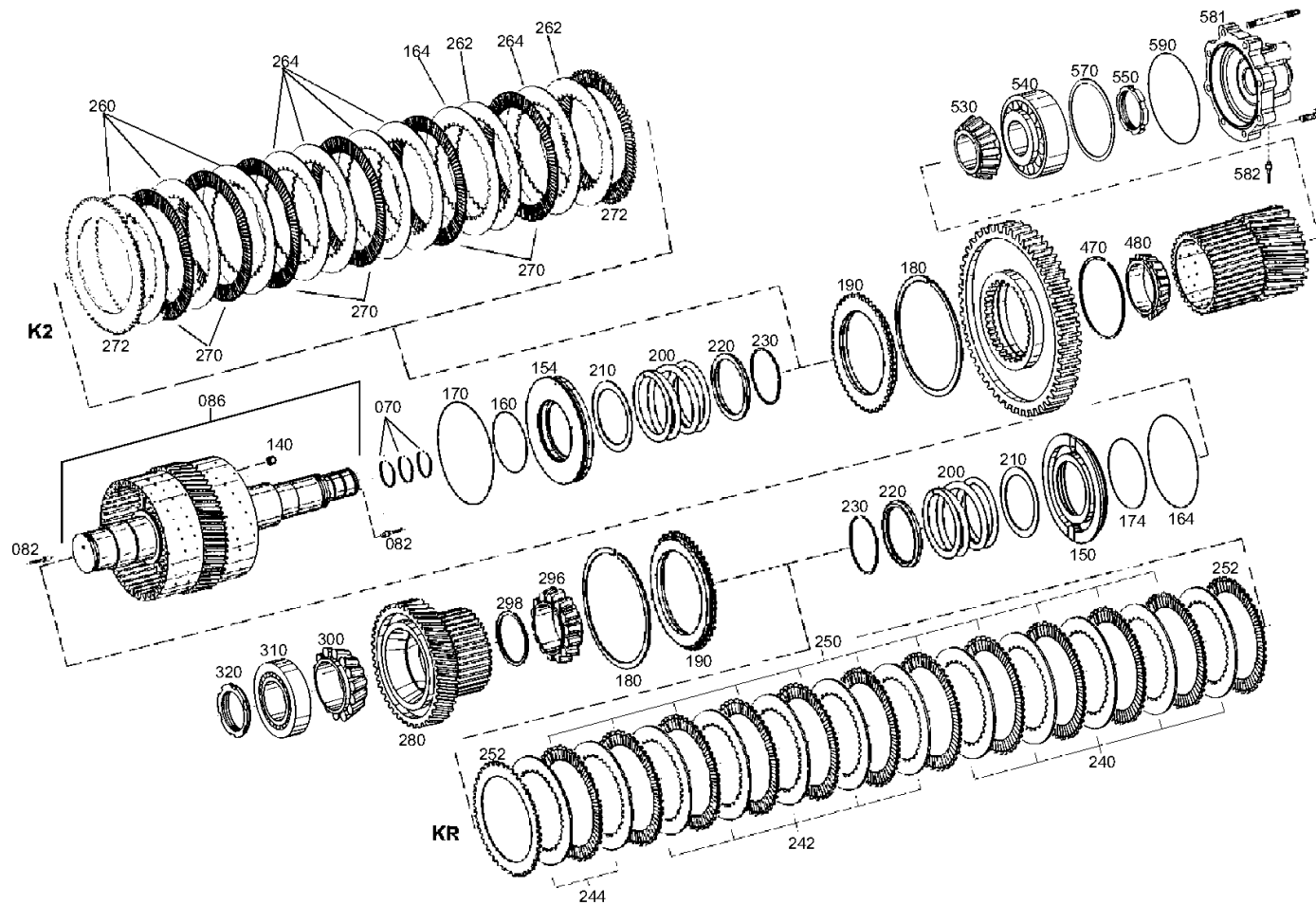
Material number: 4646.054.151

Picture: 464615207900

Material-assembly-group-no: 4646.152.079



4 WG 260 /  
COUPLING



# Picture

Page 1 from 1

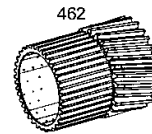
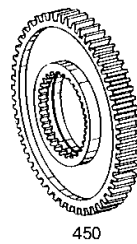
Material number: 4646.054.151

Picture: 464615253200

Material-assembly-group-no: 4646.152.532



4 WG 260 /  
COUPLING





# Picture

Page 1 from 1

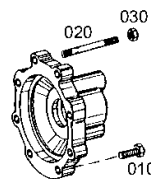
Material number: 4646.054.151

Picture: 464615254800

Material-assembly-group-no: 4646.152.548



4 WG 260 /  
COUPLING



# Picture

Page 1 from 1

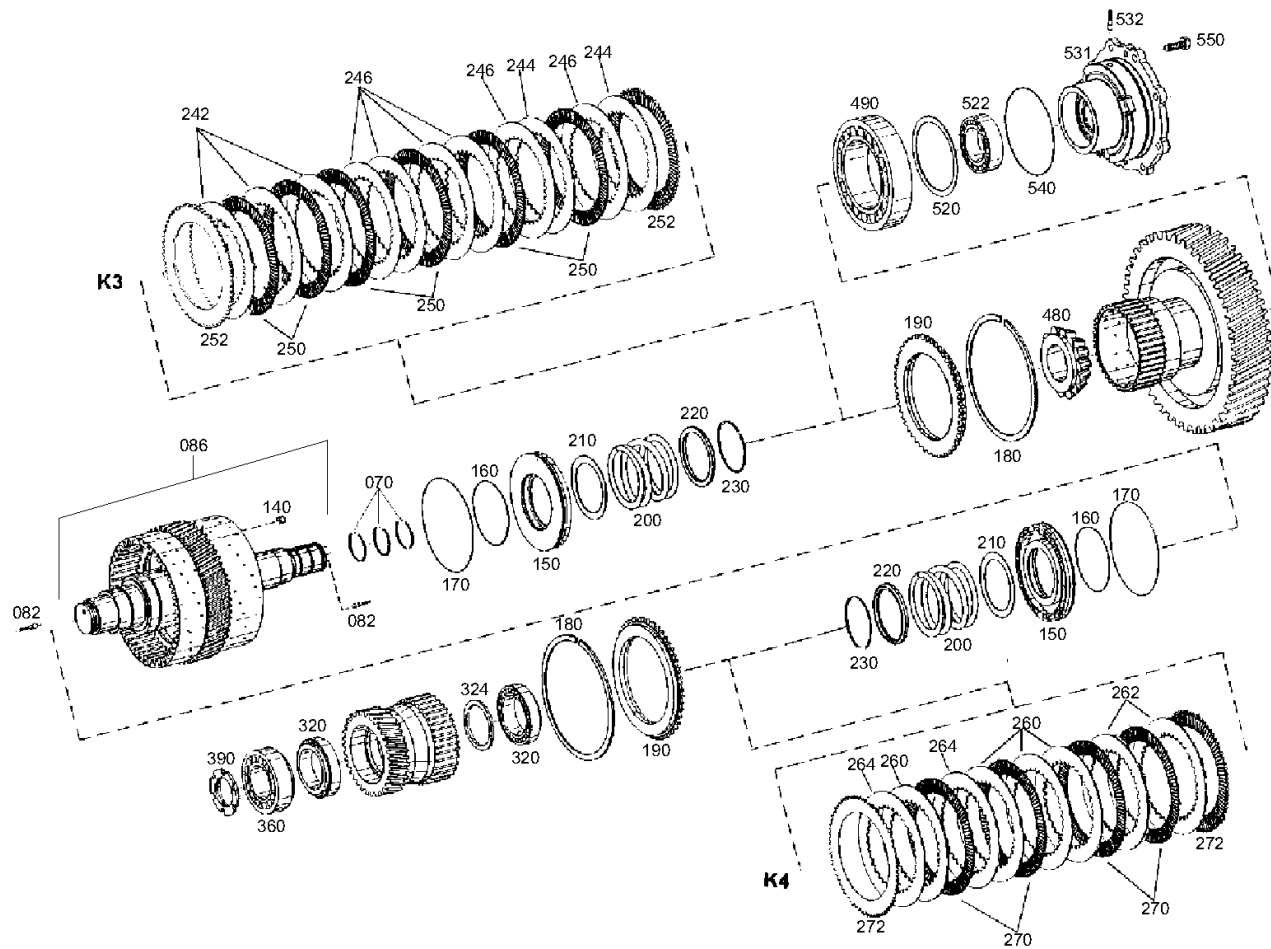
Material number: 4646.054.151

Picture: 464615307200

Material-assembly-group-no: 4646.153.072



4 WG 260 /  
COUPLING



# Picture

Page 1 from 1

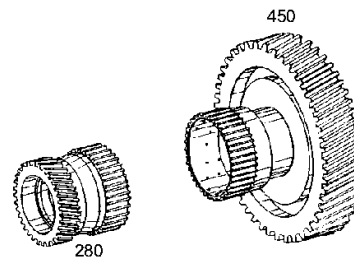
Material number: 4646.054.151

Picture: 464615345700

Material-assembly-group-no: 4646.153.457



4 WG 260 /  
COUPLING



# Picture

Page 1 from 1

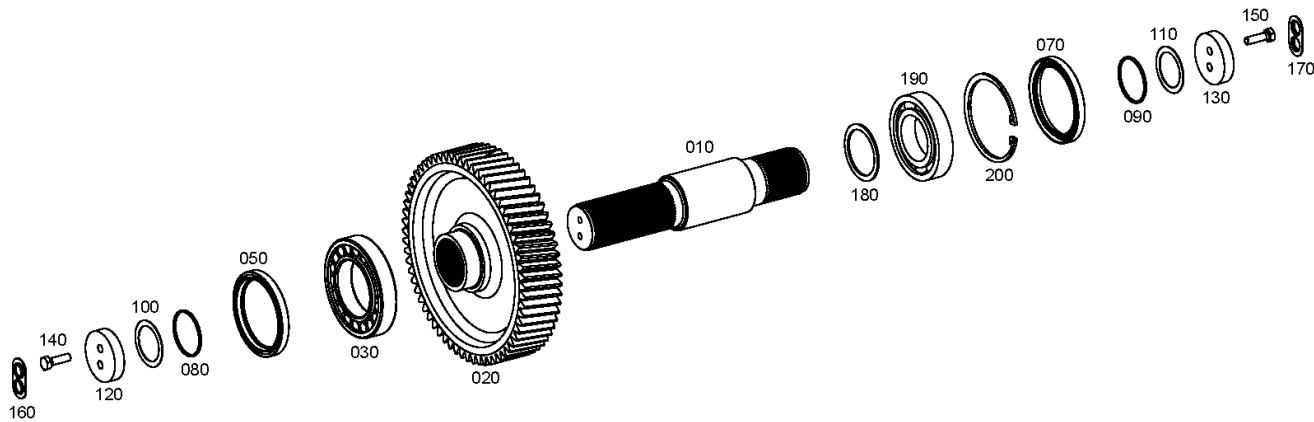
Material number: 4646.054.151

Picture: 464610303700

Material-assembly-group-no: 4646.103.037



4 WG 260 /  
OUTPUT



# Picture

Page 1 from 1

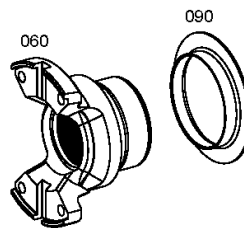
Material number: 4646.054.151

Picture: 464610345600

Material-assembly-group-no: 4646.103.456



4 WG 260 /  
OUTPUT



# Picture

Page 1 from 1

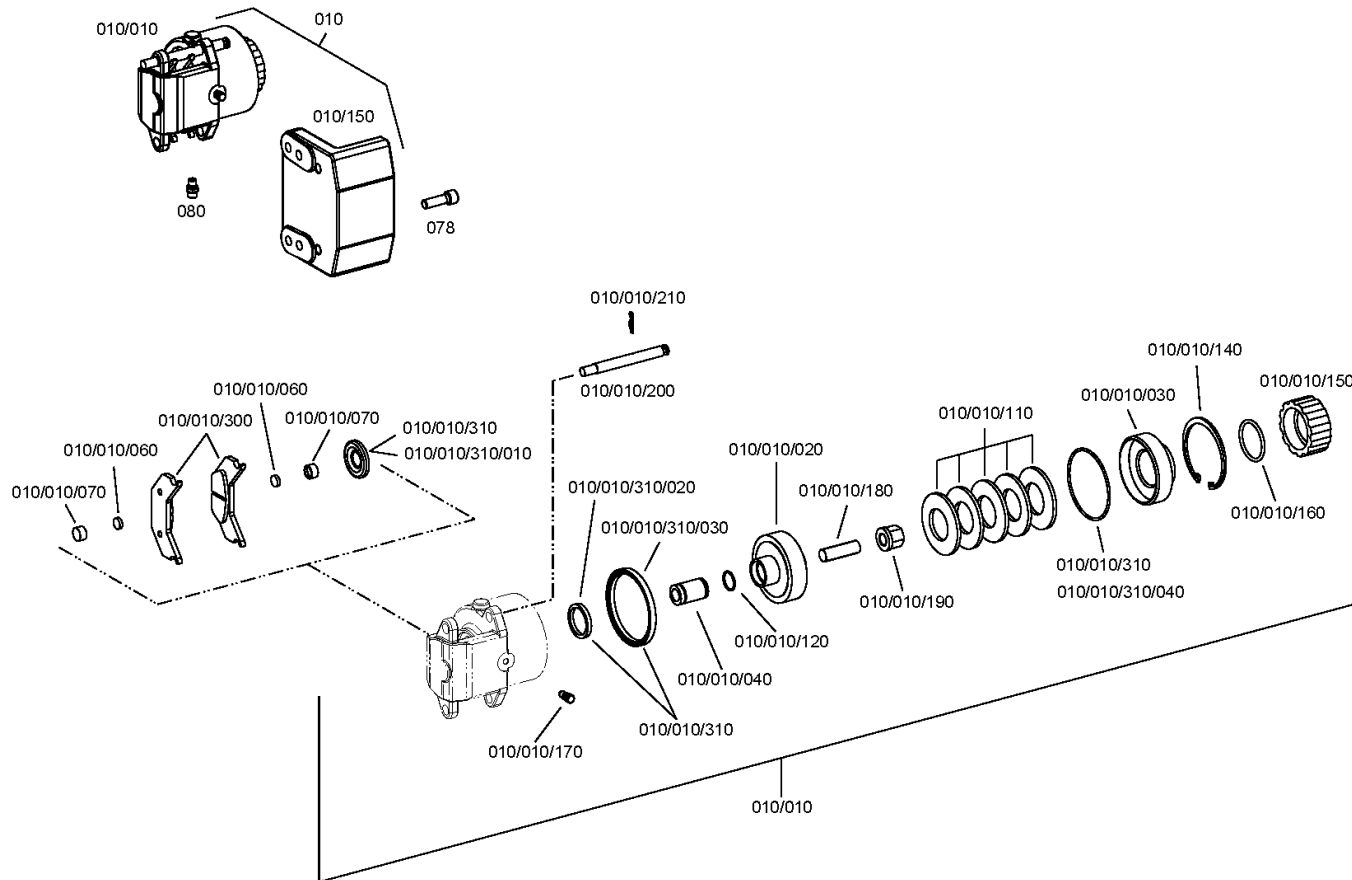
Material number: 4646.054.151

Picture: 464610901900

Material-assembly-group-no: 4646.109.019



4 WG 260 /  
PARKING BRAKE



# Picture

Page 1 from 1

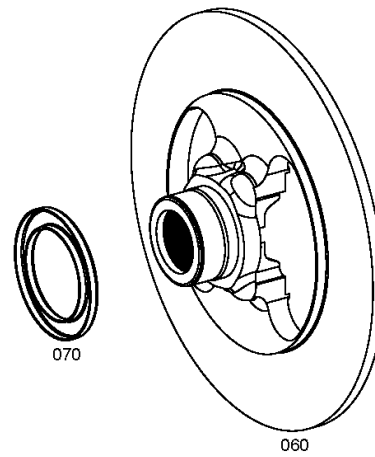
Material number: 4646.054.151

Picture: 464610942300

Material-assembly-group-no: 4646.109.423



4 WG 260 /  
PARKING BRAKE



# Picture

Page 1 from 1

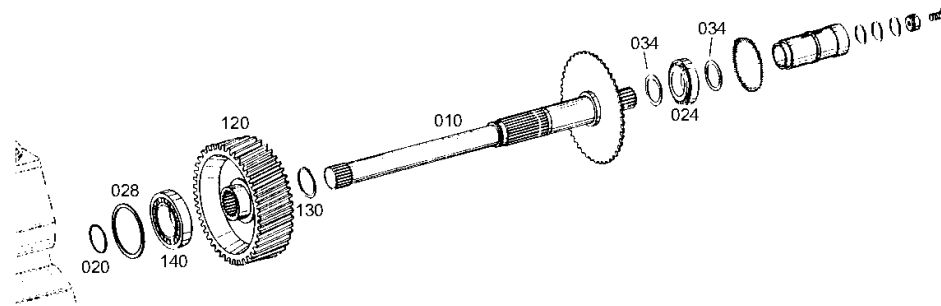
Material number: 4646.054.151

Picture: 464615406900

Material-assembly-group-no: 4646.154.069



4 WG 260 /  
POWER TAKE-OFF





# Picture

Page 1 from 1

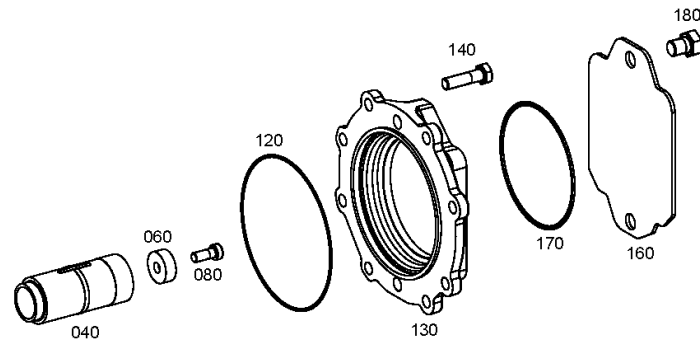
Material number: 4646.054.151

Picture: 464615444800

Material-assembly-group-no: 4646.154.448



4 WG 260 /  
POWER TAKE-OFF



# Picture

Page 1 from 1

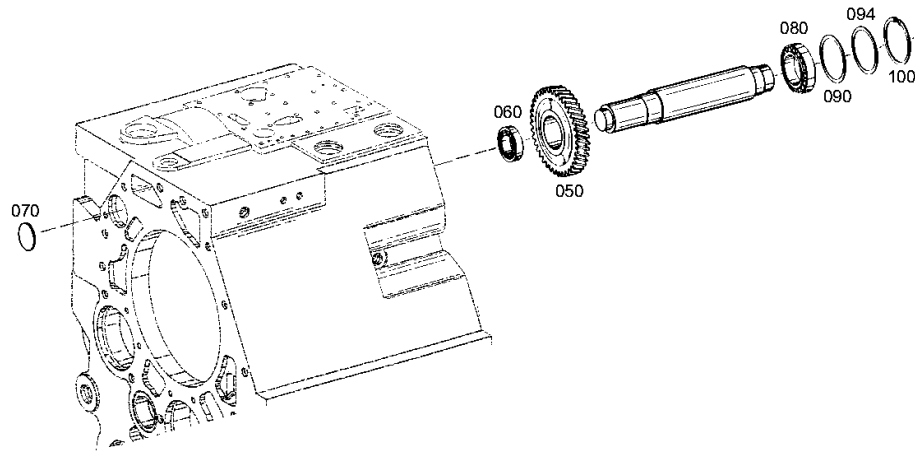
Material number: 4646.054.151

Picture: 464615501000

Material-assembly-group-no: 4646.155.010



4 WG 260 /  
POWER TAKE-OFF



# Picture

Page 1 from 1

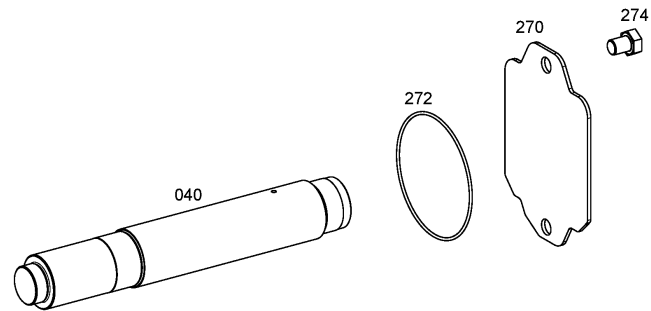
Material number: 4646.054.151

Picture: 464615541500

Material-assembly-group-no: 4646.155.415



4 WG 260 /  
POWER TAKE-OFF



# Picture

Page 1 from 1

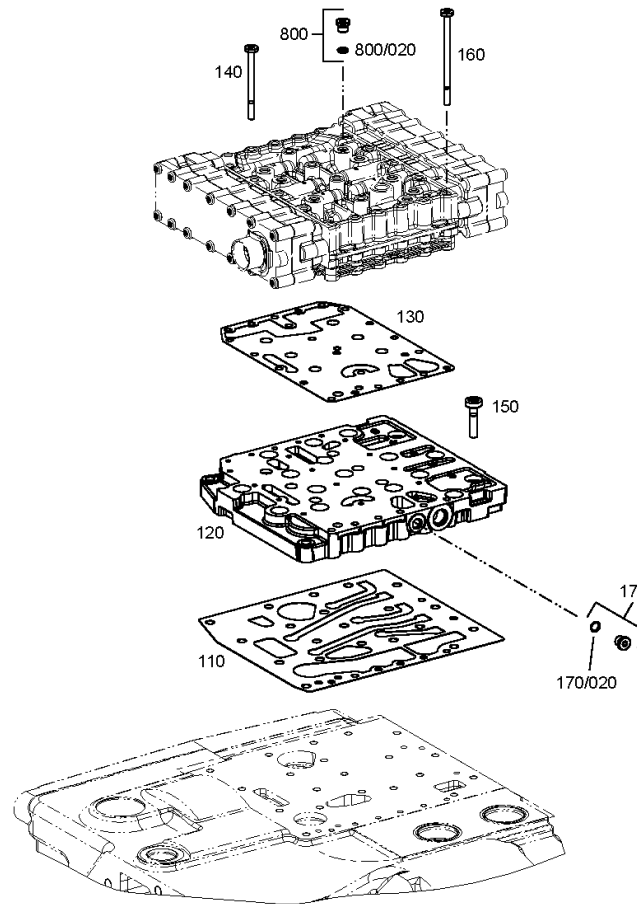
Material number: 4646.054.151

Picture: 464610602200

Material-assembly-group-no: 4646.106.022



4 WG 260 /  
SHIFT SYSTEM



# Picture

Page 1 from 2

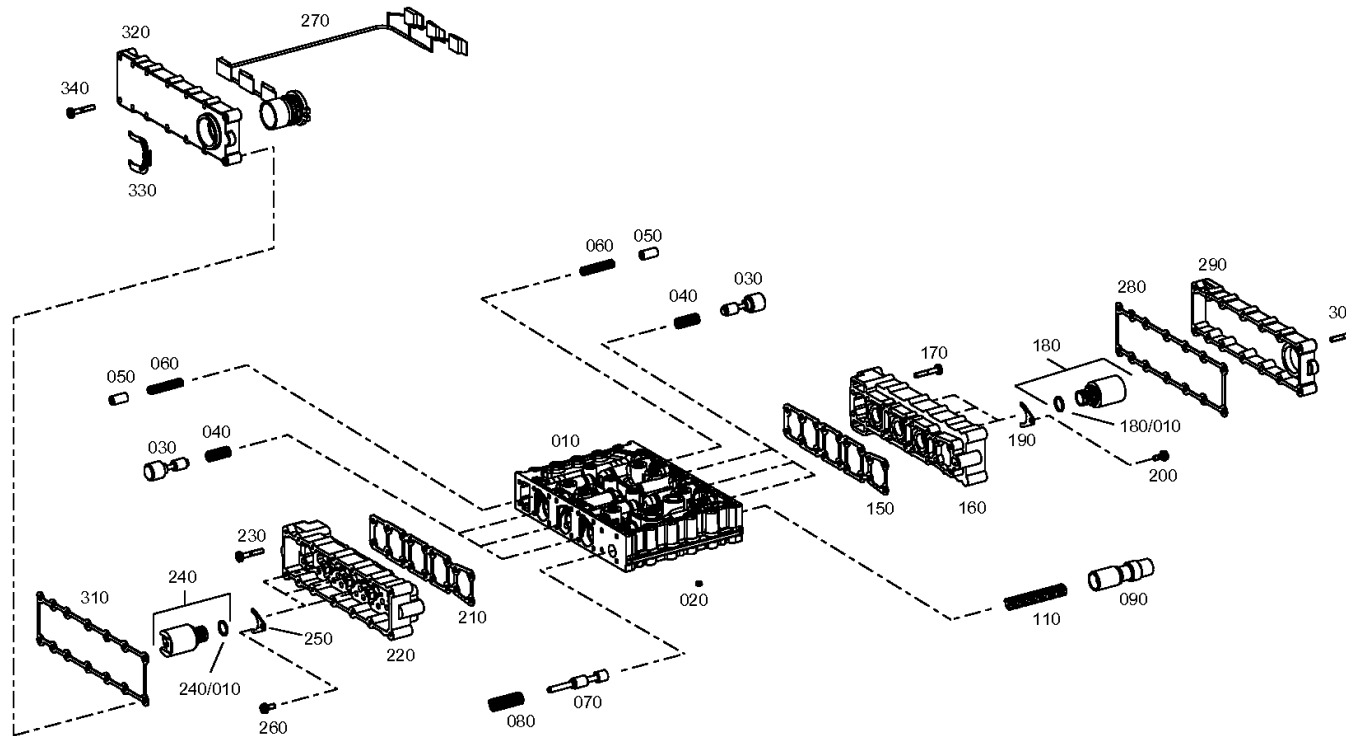
Material number: 4646.054.151

Picture: 465615901901

Material-assembly-group-no: 4656.159.019



4 WG 260 /  
SHIFT SYSTEM



# Picture

Page 2 from 2

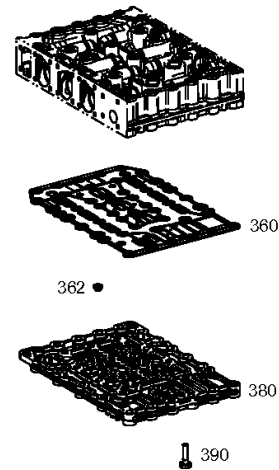
Material number: 4646.054.151

Picture: 465615901902

Material-assembly-group-no: 4656.159.019



4 WG 260 /  
SHIFT SYSTEM



# Picture

Page 1 from 1

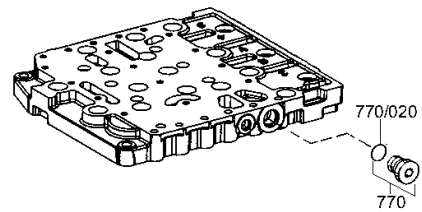
Material number: 4646.054.151

Picture: 465710640100

Material-assembly-group-no: 4657.106.401



4 WG 260 /  
SHIFT SYSTEM



# Picture

Page 1 from 1

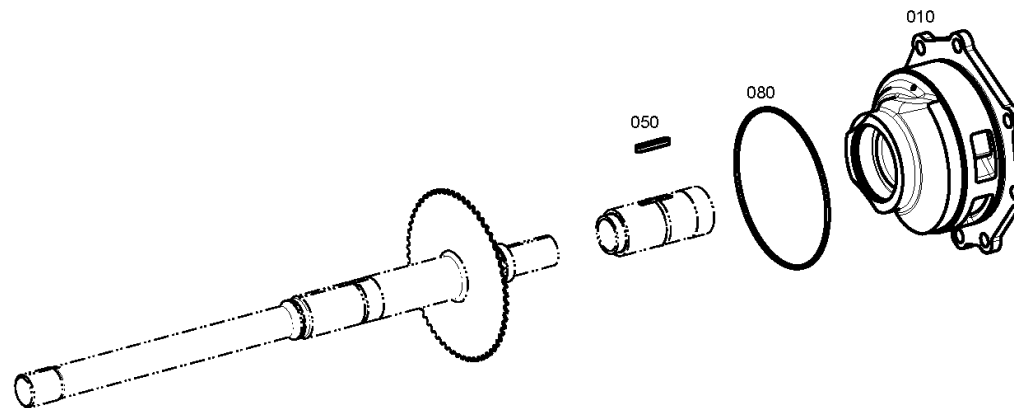
Material number: 4646.054.151

Picture: 464612201200

Material-assembly-group-no: 4646.122.012



4 WG 260 /  
PRESSURE OIL PUMP





# Picture

Page 1 from 1

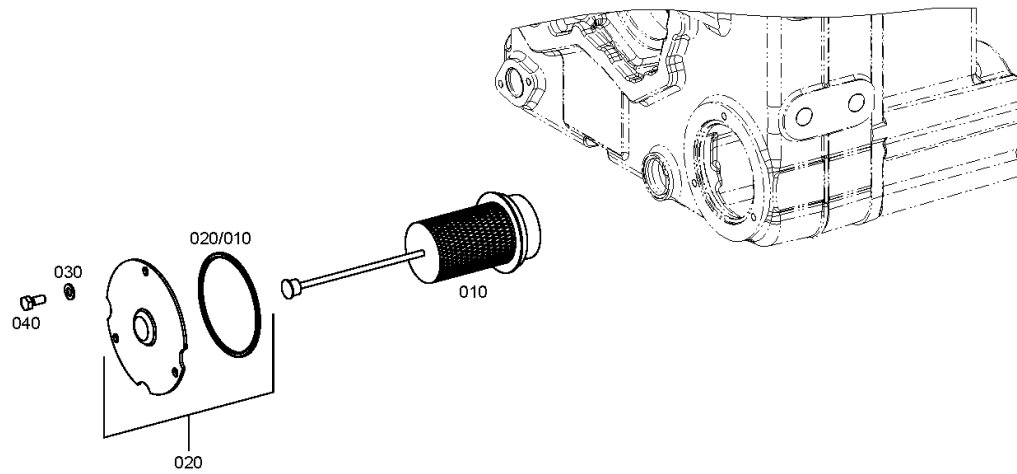
Material number: 4646.054.151

Picture: 464613800400

Material-assembly-group-no: 4646.138.004



4 WG 260 /  
FILTER



# Picture

Page 1 from 1

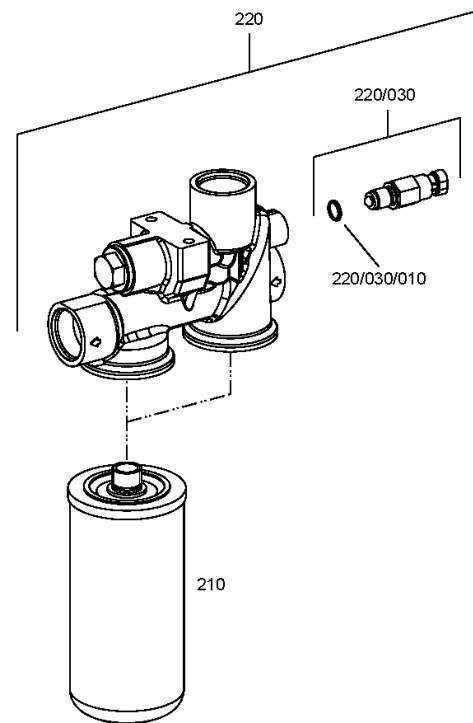
Material number: 4646.054.151

Picture: 464619940600

Material-assembly-group-no: 4646.199.406



4 WG 260 /  
LOOSE PARTS



# Picture

Page 1 from 1

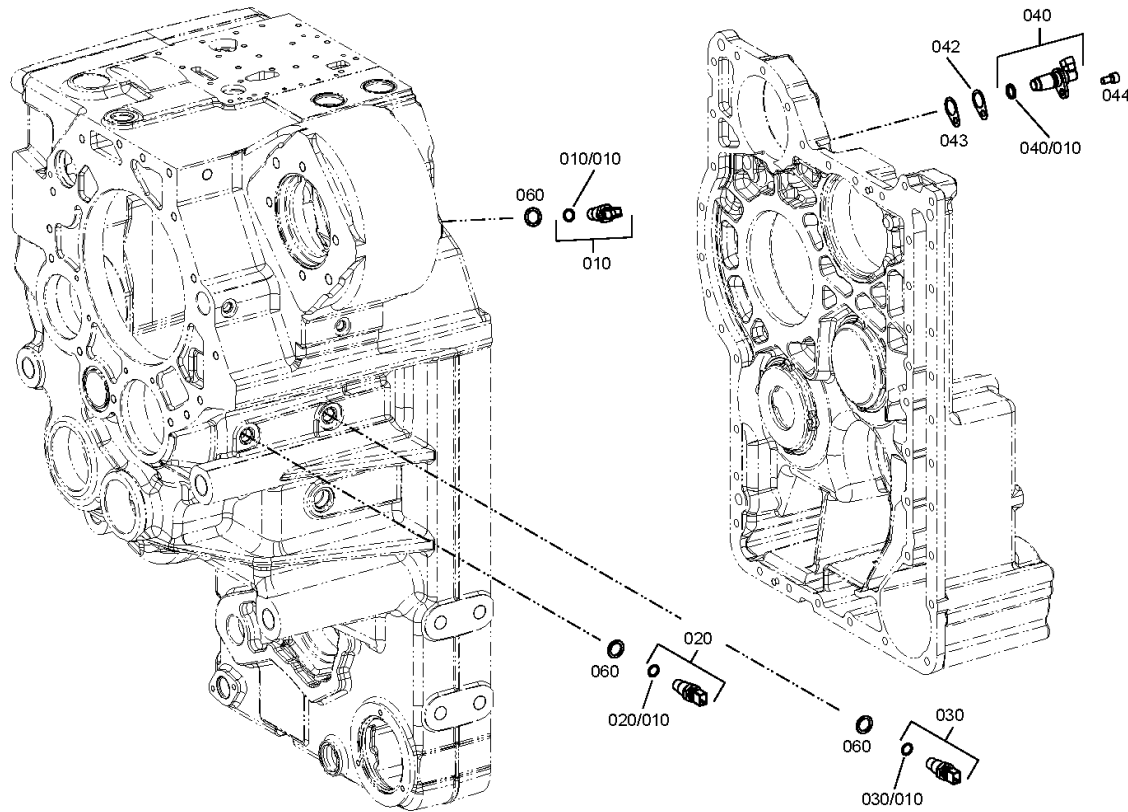
Material number: 4646.054.151

Picture: 464612502350

Material-assembly-group-no: 4646.125.023



4 WG 260 /  
INDUCTIVE SENSOR



# Picture

Page 1 from 1

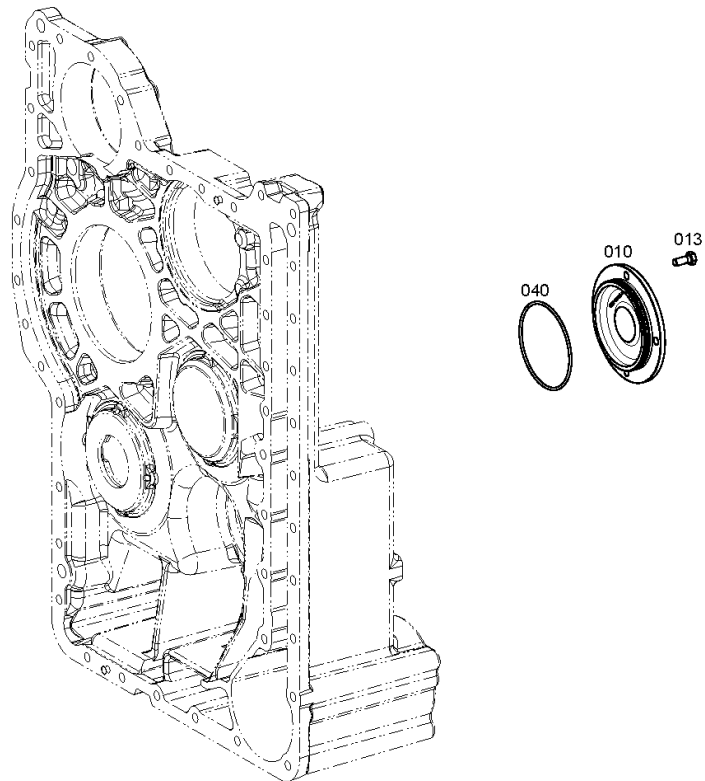
Material number: 4646.054.151

Picture: 464613702400

Material-assembly-group-no: 4646.137.024



4 WG 260 /  
EMERGENCY STEERING PUMP



# Picture

Page 1 from 1

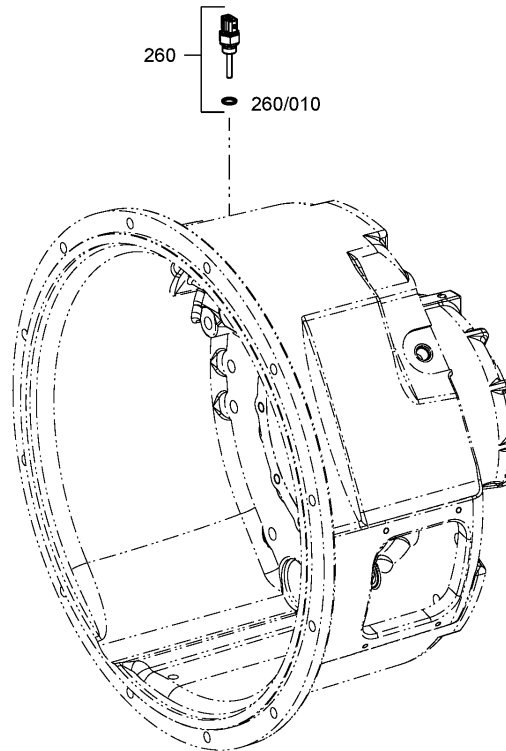
Material number: 4646.054.151

Picture: 464612400600

Material-assembly-group-no: 4646.124.006



4 WG 260 /  
TEMPERATURE SENSOR



# Picture

Page 1 from 1

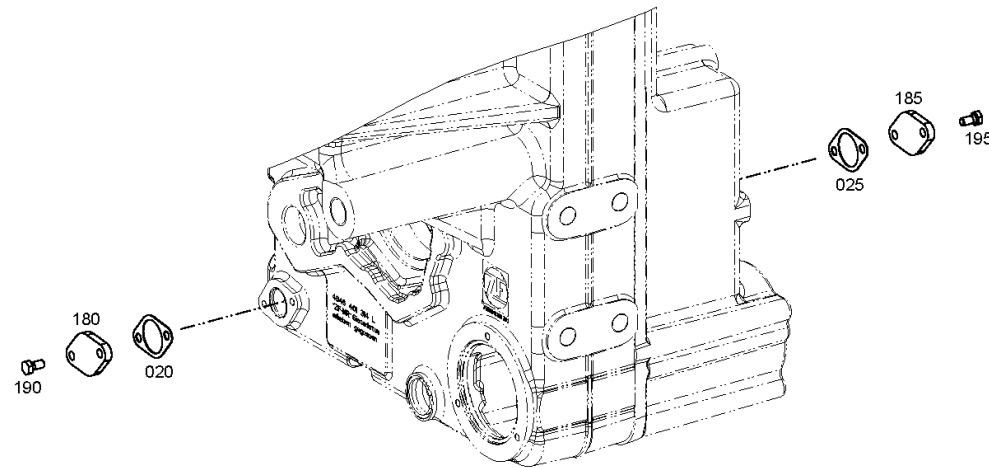
Material number: 4646.054.151

Picture: 464613101000

Material-assembly-group-no: 4646.131.010



4 WG 260 /  
FILLER NOZZLE



# Picture

Page 1 from 1

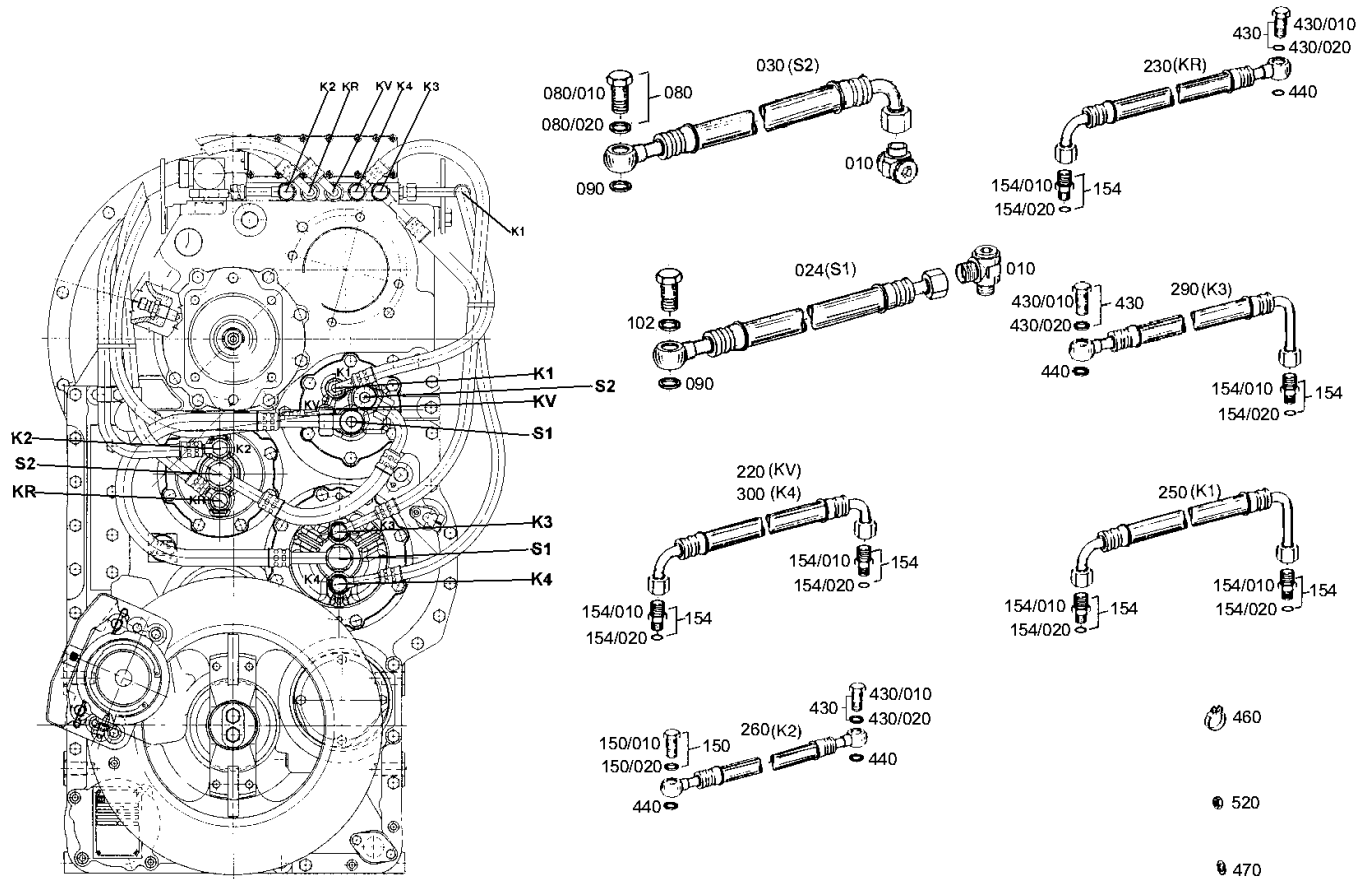
Material number: 4646.054.151

Picture: 464612110100

Material-assembly-group-no: 4646.121.101



4 WG 260 /  
OIL PIPE



# Picture

Page 1 from 1

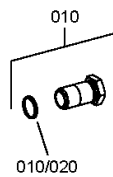
Material number: 4646.054.151

Picture: 464612141600

Material-assembly-group-no: 4646.121.416



4 WG 260 /  
OIL PIPE





# Picture

Page 1 from 1

Material number: 4646.054.151

Picture: 464619941500

Material-assembly-group-no: 4646.199.415



4 WG 260 /  
LOOSE PARTS



# Picture

Page 1 from 1

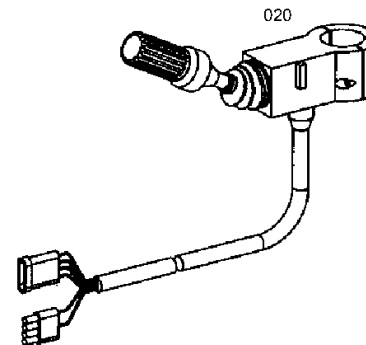
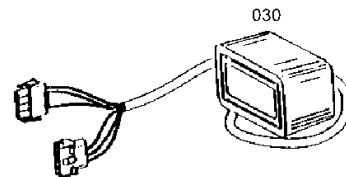
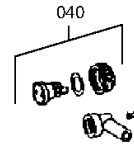
Material number: 4646.054.151

Picture: 464618504700

Material-assembly-group-no: 4646.185.047



4 WG 260 /  
ACCESSORIES



# Picture

Page 1 from 1

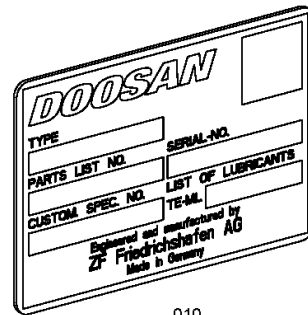
Material number: 4646.054.151

Picture: 414313901900

Material-assembly-group-no: 4143.139.019



4 WG 260 /  
TYPE PLATE



010