



Spare Parts Catalog

5 WG 310

Material number: 4646.075.002

Current date: 21.11.2022

ZF Friedrichshafen AG

Hauptverwaltung

80038 Friedrichshafen

Deutschland

Telefon: +49 7541 77-0

Telefax: +49 7541 77-908000

www.zf.com

zuständiges Werk:

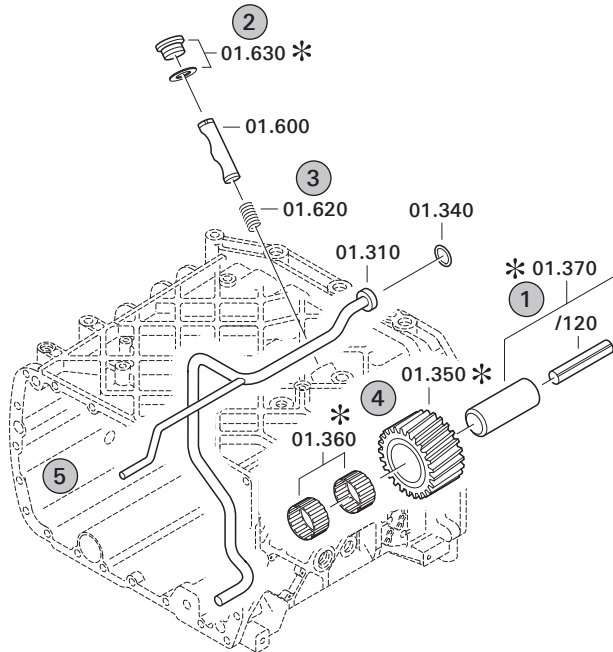
Passau

Notes relating to the spare parts catalog

Setup of the spare parts catalog

- Cover sheet
- Technical Cover (only in SDM print)
- Overview of figures
- Figure
- Associated parts list
- Next figure
- Associated parts list
- ...

Figure and parts list



Overview of figures

Bildtafel Figure	Sachnummer Product number	Benennung (Description)	Technische Info Technical info	Description (Benennung)	Menge Quantity	Einheit Unit
068.08.17	1316.170.001	AUSLEGER	WL	SHIFT TURRET	1	Stk
068.08.06	1316.170.031	DECKEL	WL*H-H *VM	COVER	1	Stk
068.08.14	1316.170.808	DECKEL	WL*AUSL+GEH*H-H*HF160N	COVER	1	Stk
08	1316.170.441	ANSCHLUSSTEILE	WL*NG-VORB*RG-SCHL*168N *BAJONETT	CONNECTING PARTS	1	Stk

The "gap" indicates that there is no separate graphics panel (poster) for this assembly
The parts of this assembly are shown with the same mid-section number on the figure

1 Positions and subpositions

Pos.	Sachnummer Product number	Benennung (Description)	Technische Info Technical info	Description (Benennung)	Menge Quantity	Einheit Unit
0370	1315.201.054	RUECKLAUFBOLZEN	KPL.16S151*SG*L= 79	REV.IDLER SHAFT	1	Stk
/0120	0631.329.293	SPANNSTIFT		SLOT. PIN	1	Stk

Positions marked with "/" are the individual items of a completion
For example: Position 0370 contains a centering pin with the position /0120

2 Combinations with standardized parts

Pos.	Sachnummer Product number	Benennung (Description)	Technische Info Technical info	Description (Benennung)	Menge Quantity	Einheit Unit
0630		VERSCHL.SCHR.		SCREW PLUG	1	Stk
	0636.302.067	VERSCHL.SCHR.		SCREW PLUG	1	Stk
	0634.801.249	DICHTRING	A 26 X 31	SEALING RING	1	Stk

The parts list shows the components included in the combination of standardized parts

3 Depiction of position/item number on the figure and in the parts list

01.620 - on the figure 01 relates to the assembly in which the position is included. Due to program-related reasons, it is shown on the figure.

0620 - in the parts list

Pos.	Sachnummer Product number	Benennung (Description)	Technische Info Technical info	Description (Benennung)	Menge Quantity	Einheit Unit
0620	0732.040.736	DRUCKFEDER		COMPRESSION SPRING	1	Stk

4 *-Positions

Positions marked with an * are optional i.e. inclusion in the parts list is not mandatory.
The following note is shown on the figure

je nach Stücklistenausführung
depending on spec. number
*
suivant la nomenclature
secondo la distinta base

5 Parts, dotted display

Parts with dotted display on the figure are only used for orientation of other parts

Technical Cover

Page 1 from 4

Material number: 4646.075.002



5 WG 310 /

Pos.	Information	Amendment number
	CUSTOMER: DEERE DAV.	
	COSTUMER-IDENT-NUMBER: AT334698	
	STATE: USA	
	VEHICLE DATA: -----	
	VEHICLE APPLICATION: 844K	
	WEIGHT LOADED (TO): 31,5	
	ENGINE: JD844K	
	ENGINE POWER(KW): 283,5	
	SPEED (RPM): 1800	
	INPUT TORQUE(NM): 1834	
	SPEED (RPM): 1400	
	TIRES: 29,5 R25 L3	
	TIRE RADIUS (M): 0,877	
	AXLE RATIO: 27	
	MAX. SPEED (KM/H): 44	
	PRODUCT DESCRIPTION: ZF-ERGOPOWER TRANSMISSION	
	TRANSMISSION TYPE 5 WG 310 (4)	
	DROP CENTER DISTANCE: 575 MM	
	VEHICLE: LOADER	
	VERSION STANDARD	
	1. GEAR FORWARD: 3,731	
	2. GEAR FORWARD: 2,207	
	3. GEAR FORWARD: 1,421	
	4. GEAR FORWARD: 0,970	
	5. GEAR FORWARD: 0,625	
	1. GEAR REVERSE: 3,731	
	2. GEAR REVERSE: 2,207	
	3. GEAR REVERSE: 0,970	
	NUMBER OF PULSES ENGIN: 60	
	NUMBER OF PULSES TURB: 59	
	NUMBER OF PULSES MRK: 91	
	NUMBER OF PULSES OUTP.: 64	
	SHIFTED CLUTCHES 1G.KV/K1 2G.KV/K2 3G.K4/K2	



Pos.	Information	Amendment number
	SHIFTED COUPLING 4G.KV/K3 5G.K4/K3	
	CONVERTER: W 400	
	CONVERTER PART NO: 040 H 110	
	LOCK-UP CLUTCH: WITH,PROP. REGULATED	
	SETTING INSTRUKTIONS 4646 700 295 OPERATING PR 12+2	
	STALL TORQUE RATIO: 2,46	
	TORQUE CONVERTER ABS.: 253 NM	
	STATOR FREEWHEEL: WITH	
	RETARDER: WITHOUT	
	ENGINE INPUT: REMOTE MOUNTED VIA JOINT SHAFT	
	INPUT FLANGE: MECHANIC	
	INPUT FLANGE-TYPE: MECH 7 C	
	OUTPUT: STANDARD	
	OUTPUT CONVERTER SIDE: WITHOUT AXLE DISCONNECT	
	OUTPUT FLANGECONVERTER MECHANIC	
	OUTPUT FLANGE TYPE: MECH 8,5 C	
	OUTPUT PTO SIDE: WITHOUT PARKING BRAKE	
	OUTPUT FLANGE PTO SIDE: MECHANIC	
	OUTPUT FLANGE-TYPE: MECH 8,5 C	
	POWER TAKE OFF: 1 PTO COAXIAL ENGINE-DEPENDENT	
	3 PTO TOP BRAKE SIDE	
	1. POWER TAKE OFF: -----	
	FLANGE: SAE C C 2 4 M14 M16	
	DRIVER / PROFILE: SAE C - C 12/24 DP 17 Z	
	DISCONNECTION: WITHOUT	
	3. POWER TAKE OFF: -----	
	FLANGE: SAE C C 2/4 LOCH J D	
	DRIVER / PROFILE: SAE C 12/24 DP 17 Z	
	RATIO 3 PTO 1 : 1	
	GEAR CHANGE CONTROL: ZF-ERGOSHIFT/ PROP VALVE/LOCK UP-I	
	VOLTAGE: 24 VOLT	
	OPERATING PRESSURE: 16+2 BAR	
	CABLE CONNECT. TO EST 3 BAYONET	

Technical Cover

Page 3 from 4

Material number: 4646.075.002



5 WG 310 /

Pos.	Information	Amendment number
	CONTROL SYSTEM: -----	
	ELECTRIC PARTS ORDER: SEPARATE ORDER	
	SEPERATE ORDER: SIEHE 002000007861	
	CONTROL UNIT: EST 37A	
	VEHICLE SUPPLY VOLTAGE: 24 VOLT	
	GEAR SELECTOR: DW 3	
	DISPLAY: WITHOUT	
	LOAD SENSOR: WITHOUT	
	WIRING: WITHOUT	
	OIL TEMPERATURE SENSOR: WITHOUT	
	SPEED CONTROL: CONNECTION VIA EST	
	OIL LEVEL TUBE: WITHOUT	
	FILTER INSTALLATION: WITHOUT	
	ADAPTER WITHOUT	
	ADDITIONAL FILTER WITHOUT	
	PRES. DROP SWITCH: WITH	
	EMERGENCY STEERING PUMP MOUNTING POSSIBILITY	
	GEARBOX BREATHER: WITH	
	DOCUMENTATION GEAR BOX: -----	
	GEAR DIAGRAMM: 4646 700 377	
	SECTION DRAWING: 4646 074 009	
	OIL CIRCUIT DIAGRAMM: 4646 700 362	
	DOCU. CONTROL UNIT: -----	
	DRAWING 6009 665 002	
	DRAWING GEAR SEL. 1: 6006 630 023	
	CONNECTION DIAGRAMM: 6006 700 564	
	CONNECTION DIAGRAMM: 6029 701 969	
	OIL CAPACITY: 32	
	GEARBOX OIL CAPACITY: WITHOUT	
	OEL-CLASS: OIL SPECIFICATION TE ML 03	
	PRIME COAT: 2 YELLOW RAL 1006	
	INSTAL. INSTRUCTIONS: 0000 702 271	
	INSTALLATION DRAWING: 4646 675 002	

Technical Cover

Page 4 from 4

Material number: 4646.075.002



5 WG 310 /

Pos.	Information	Amendment number
	PERFORMANCE CALC.: 4646 708 974	
	ADDITIONAL PERF.CALC: 4646 709 581/582/583/604/605	
	NOTES: FILTER IS ORDERED SEPARATED	

Assembly group overview

Page 1 from 3

Material number: 4646.075.002



5 WG 310 /

Picture	Pos.	Material number	Name	Quantity	Amend. no.	Techn. Info.
464613003400	270	4646.130.034	ENGINE CONNECTION	1		
464613040700	280	4646.130.407	ENGINE CONNECTION	1		
416604002300	500	4166.040.023	CONVERTER	1		
464610205400	30	4646.102.054	INPUT	1		
464610242300	35	4646.102.423	INPUT	1		
464610119100	10	4646.101.191	TRANSMISSION HOUSING	1		
464616241600	20	4646.162.416	OIL PIPE	1		
464610801400	150	4646.108.014	COUNTERSHAFT	1		
464615107400	350	4646.151.074	COUPLING	1		
464615148600	352	4646.151.486	COUPLING	1		
464615147100	355	4646.151.471	COUPLING	1		
464615207800	360	4646.152.078	COUPLING	1		
464615254800	367	4646.152.548	COUPLING	1		
464615252300	365	4646.152.532	COUPLING	1		
464615307400	370	4646.153.074	COUPLING	1		
464615345700	375	4646.153.457	COUPLING	1		

Assembly group overview

Page 2 from 3

Material number: 4646.075.002



5 WG 310 /

Picture	Pos.	Material number	Name	Quantity	Amend. no.	Techn. Info.
464610303700	50	4646.103.037	OUTPUT	1		
464610345600	60	4646.103.456	OUTPUT	1		
464610345700	70	4646.103.457	OUTPUT	1		
464615406000	380	4646.154.060	POWER TAKE-OFF	1		
464615444000	390	4646.154.440	POWER TAKE-OFF	1		
464615501200	400	4646.155.012	POWER TAKE-OFF	1		
464615600800	420	4646.156.008	POWER TAKE-OFF	1		
464615643900	430	4646.156.439	POWER TAKE-OFF	1		
464610602200	110	4646.106.022	SHIFT SYSTEM	1		
465710640100	115	4657.106.401	SHIFT SYSTEM	1		
465615901801	120	4656.159.018	SHIFT SYSTEM	1		
464612300900	130	4646.123.009	CONTROL UNIT	1		
464612201200	225	4646.122.012	PRESSURE OIL PUMP	1		
464613800400	330	4646.138.004	FILTER	1		
464613840300	340	4646.138.403	FILTER	2		
464612502350	250	4646.125.023	INDUCTIVE SENSOR	1		

Assembly group overview

Page 3 from 3

Material number: 4646.075.002



5 WG 310 /

Picture	Pos.	Material number	Name	Quantity	Amend. no.	Techn. Info.
464613702200	310	4646.137.022	EMERGENCY STEERING PUMP	1		
464613741400	320	4646.137.414	EMERGENCY STEERING PUMP	1		
464612400500	235	4646.124.005	TEMPERATURE SENSOR	1		
464613101000	290	4646.131.010	FILLER NOZZLE	1		
464612107801	210	4646.121.078	OIL PIPES	1		
464612141600	215	4646.121.416	OIL PIPE	1		
414313900100	18	4143.139.001	TYPE PLATE	1		

Picture

Page 1 from 1

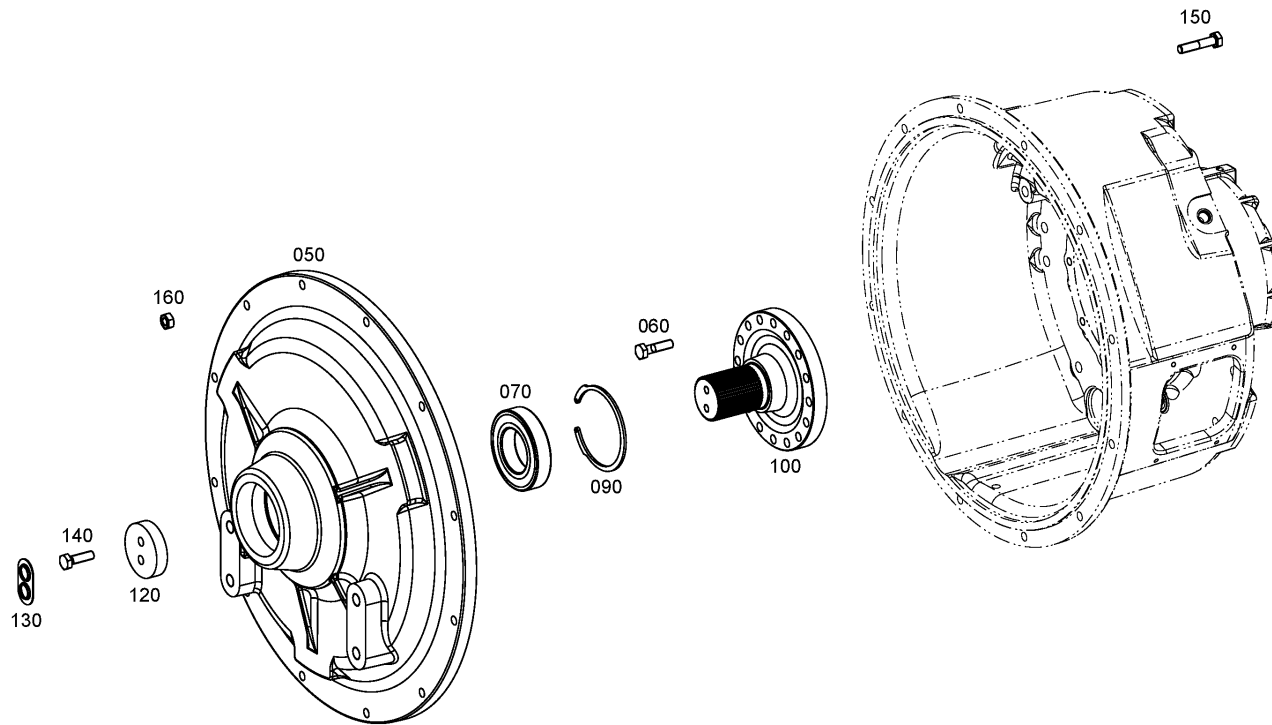
Material number: 4646.075.002

Picture: 464613003400

Material-assembly-group-no: 4646.130.034



5 WG 310 /
ENGINE CONNECTION



Picture

Page 1 from 1

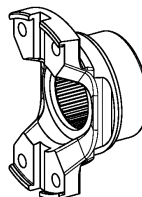
Material number: 4646.075.002

Picture: 464613040700

Material-assembly-group-no: 4646.130.407



5 WG 310 /
ENGINE CONNECTION



110

Picture

Page 1 from 1

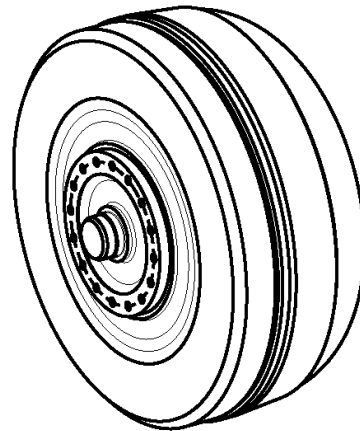
Material number: 4646.075.002

Picture: 416604002300

Material-assembly-group-no: 4166.040.023



5 WG 310 /
CONVERTER



010

Picture

Page 1 from 1

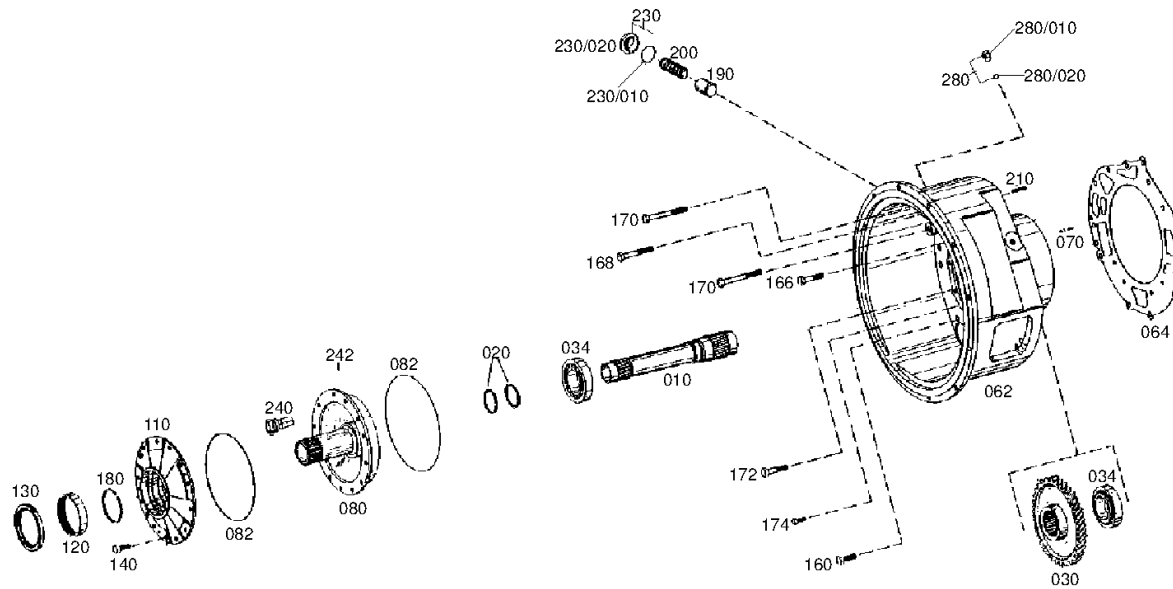
Material number: 4646.075.002

Picture: 464610205400

Material-assembly-group-no: 4646.102.054



5 WG 310 /
INPUT



Picture

Page 1 from 1

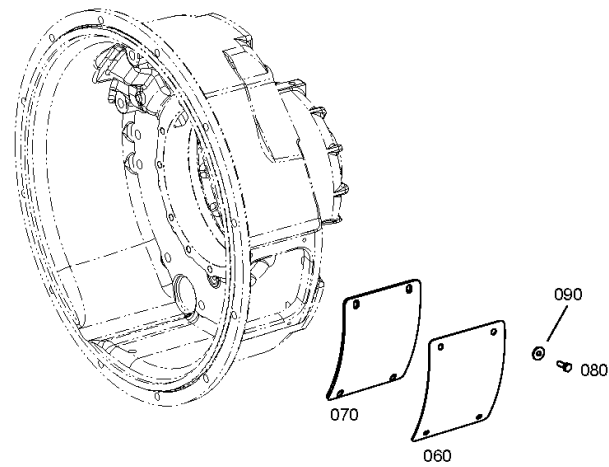
Material number: 4646.075.002

Picture: 464610242300

Material-assembly-group-no: 4646.102.423



5 WG 310 /
INPUT



Picture

Page 1 from 1

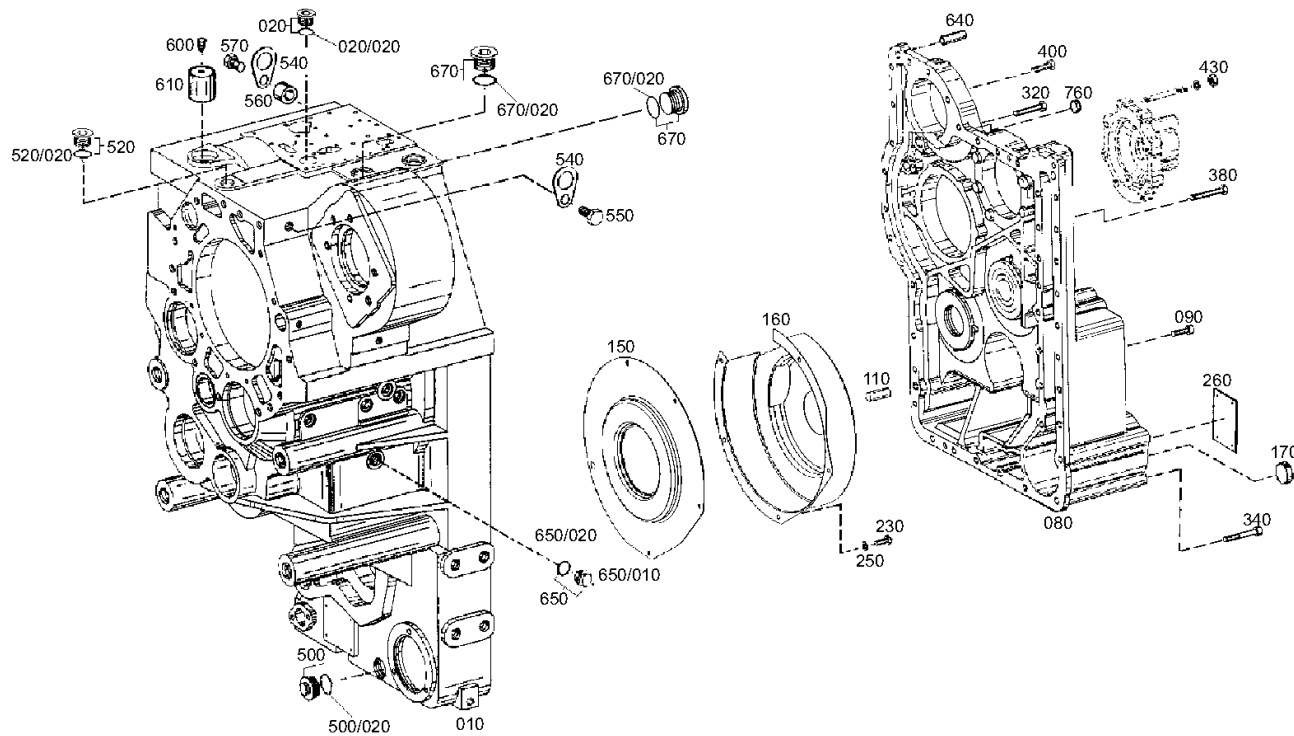
Material number: 4646.075.002

Picture: 464610119100

Material-assembly-group-no: 4646.101.191



5 WG 310 /
TRANSMISSION HOUSING



Picture

Page 1 from 1

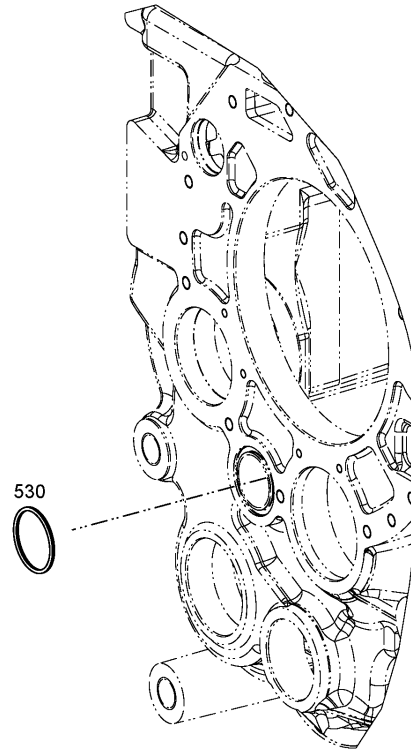
Material number: 4646.075.002

Picture: 464616241600

Material-assembly-group-no: 4646.162.416



5 WG 310 /
OIL PIPE



Picture

Page 1 from 1

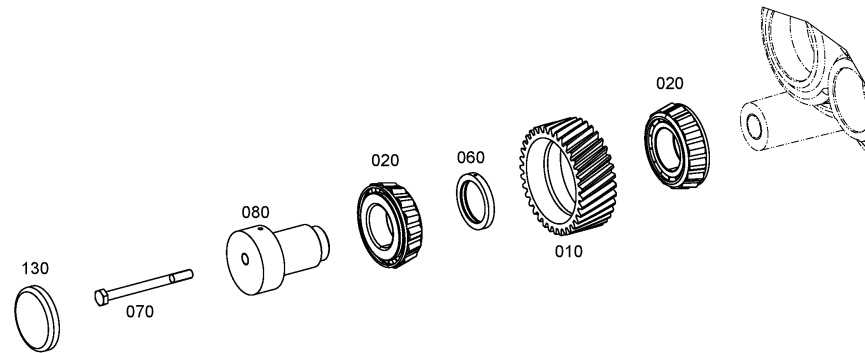
Material number: 4646.075.002

Picture: 464610801400

Material-assembly-group-no: 4646.108.014



5 WG 310 /
COUNTERSHAFT



Picture

Page 1 from 1

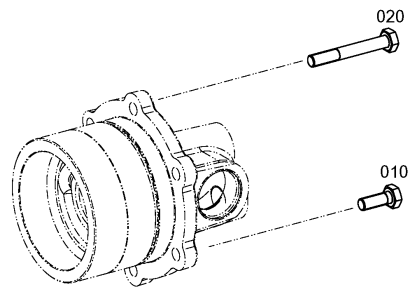
Material number: 4646.075.002

Picture: 464615148600

Material-assembly-group-no: 4646.151.486



5 WG 310 /
COUPLING



Picture

Page 1 from 1

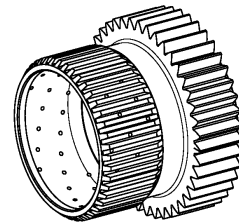
Material number: 4646.075.002

Picture: 464615147100

Material-assembly-group-no: 4646.151.471



5 WG 310 /
COUPLING



400

Picture

Page 2 from 2

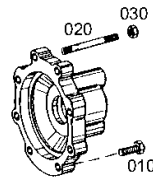
Material number: 4646.075.002

Picture: 464615254800

COUPLING



5 WG 310 /
COUPLING



Picture

Page 1 from 1

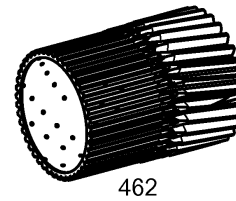
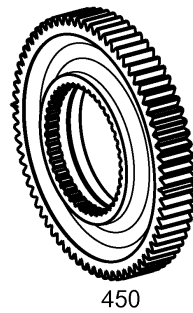
Material number: 4646.075.002

Picture: 464615252300

Material-assembly-group-no: 4646.152.532



5 WG 310 /
COUPLING



Picture

Page 1 from 1

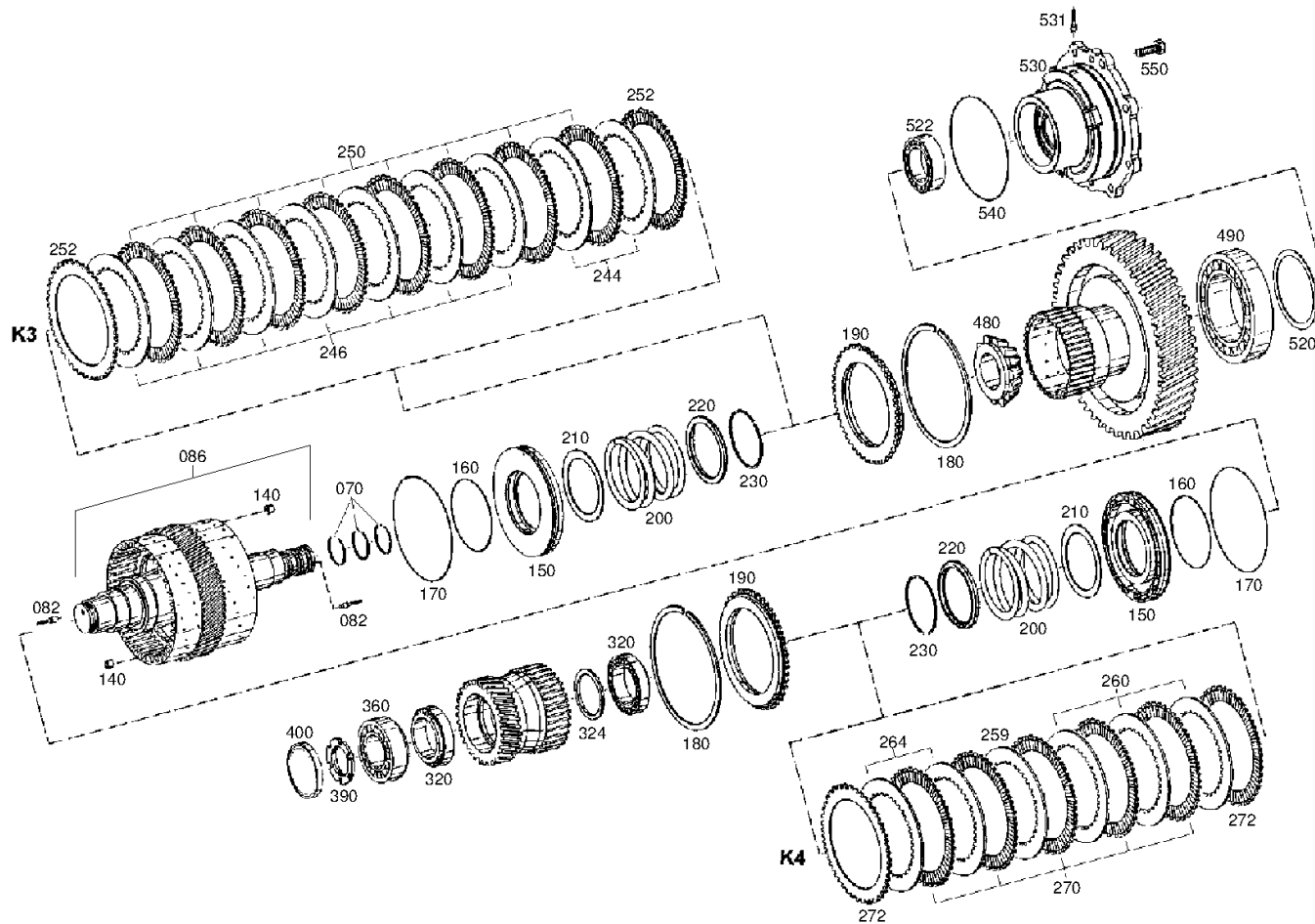
Material number: 4646.075.002

Picture: 464615307400

Material-assembly-group-no: 4646.153.074



5 WG 310 /
COUPLING



Picture

Page 1 from 1

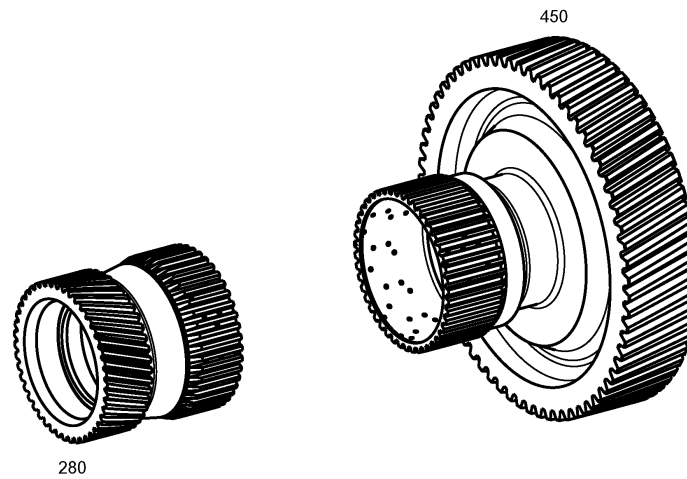
Material number: 4646.075.002

Picture: 464615345700

Material-assembly-group-no: 4646.153.457



5 WG 310 /
COUPLING



Picture

Page 1 from 2

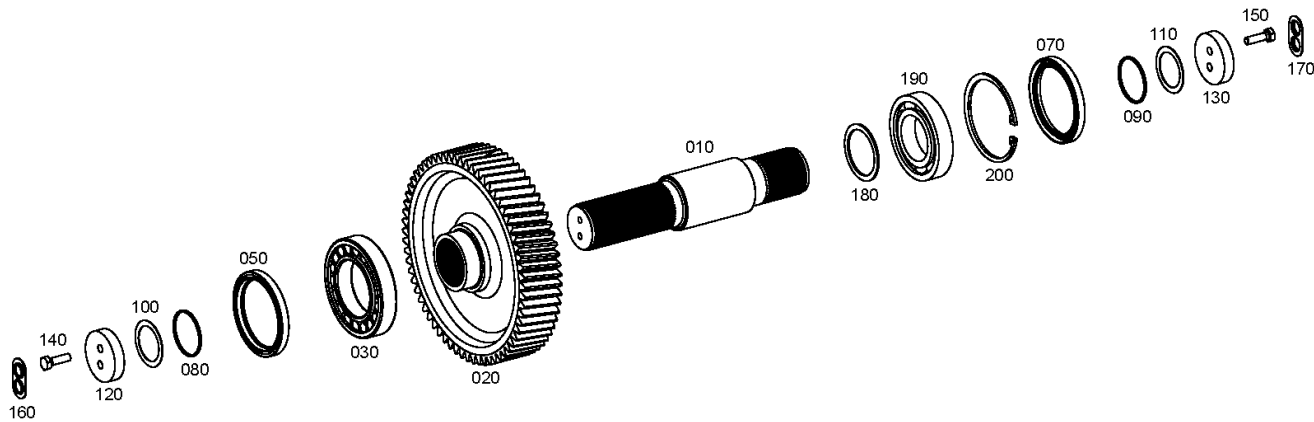
Material number: 4646.075.002

Picture: 464610303700

Material-assembly-group-no: 4646.103.037



5 WG 310 /
OUTPUT



Picture

Page 2 from 2

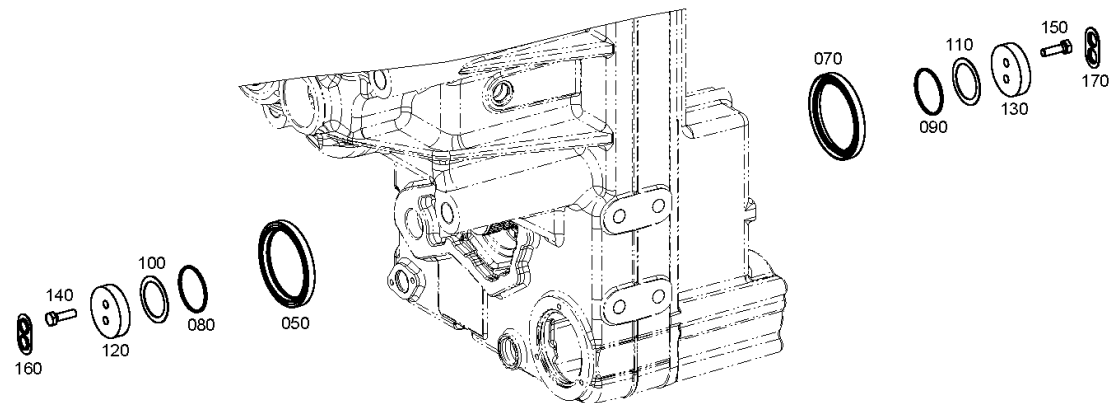
Material number: 4646.075.002

Picture: 464610303780

Material-assembly-group-no: 4646.103.037



5 WG 310 /
OUTPUT



Picture

Page 1 from 1

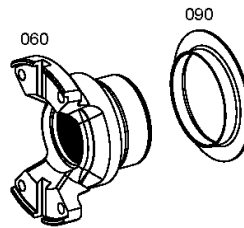
Material number: 4646.075.002

Picture: 464610345600

Material-assembly-group-no: 4646.103.456



5 WG 310 /
OUTPUT



Picture

Page 1 from 1

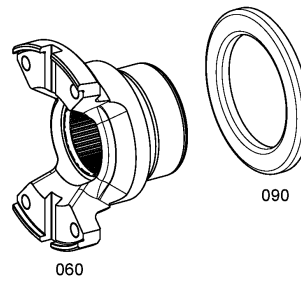
Material number: 4646.075.002

Picture: 464610345700

Material-assembly-group-no: 4646.103.457



5 WG 310 /
OUTPUT



Picture

Page 1 from 1

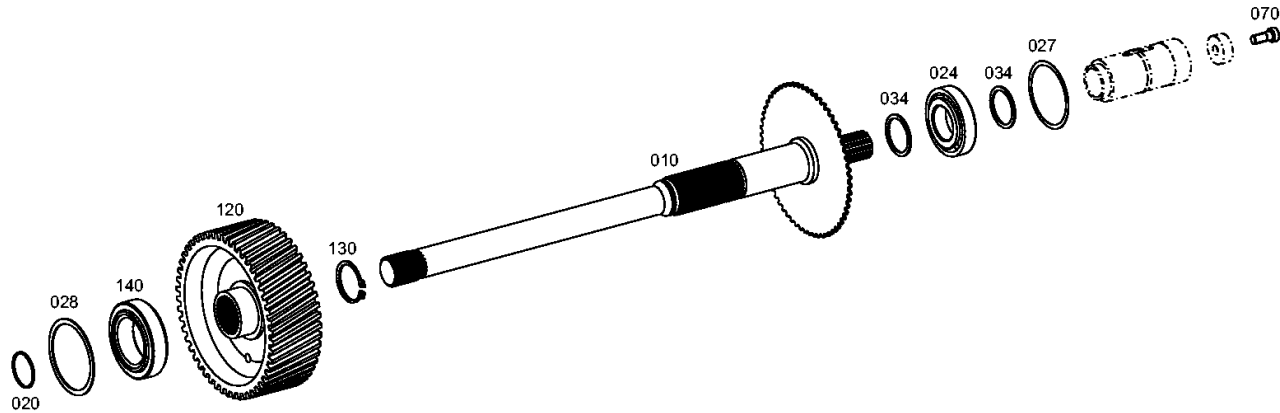
Material number: 4646.075.002

Picture: 464615406000

Material-assembly-group-no: 4646.154.060



5 WG 310 /
POWER TAKE-OFF



Picture

Page 1 from 1

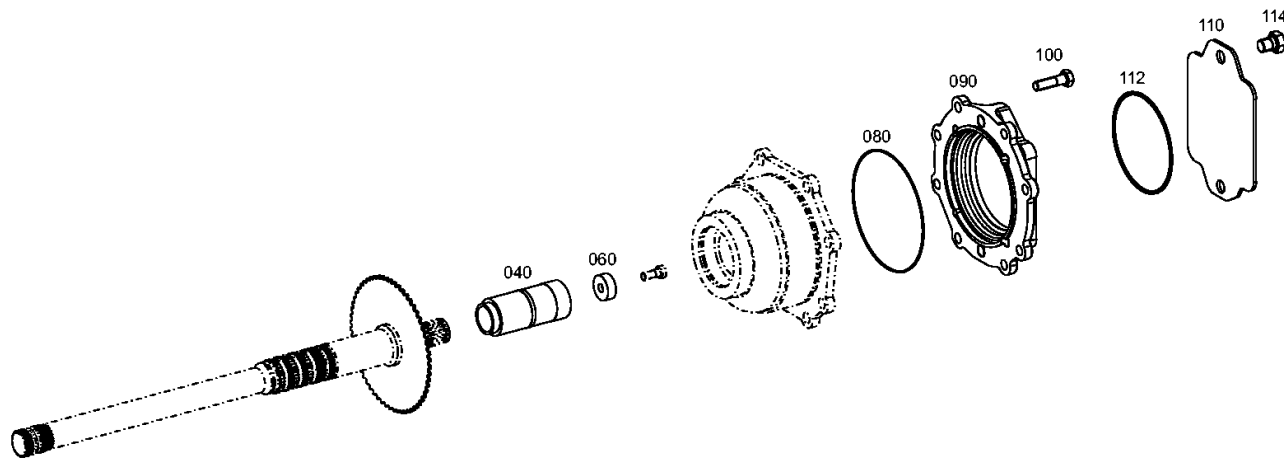
Material number: 4646.075.002

Picture: 464615444000

Material-assembly-group-no: 4646.154.440



5 WG 310 /
POWER TAKE-OFF



Picture

Page 1 from 1

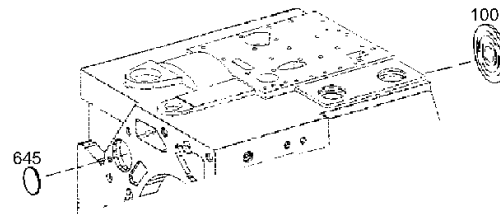
Material number: 4646.075.002

Picture: 464615501200

Material-assembly-group-no: 4646.155.012



5 WG 310 /
POWER TAKE-OFF



Picture

Page 1 from 1

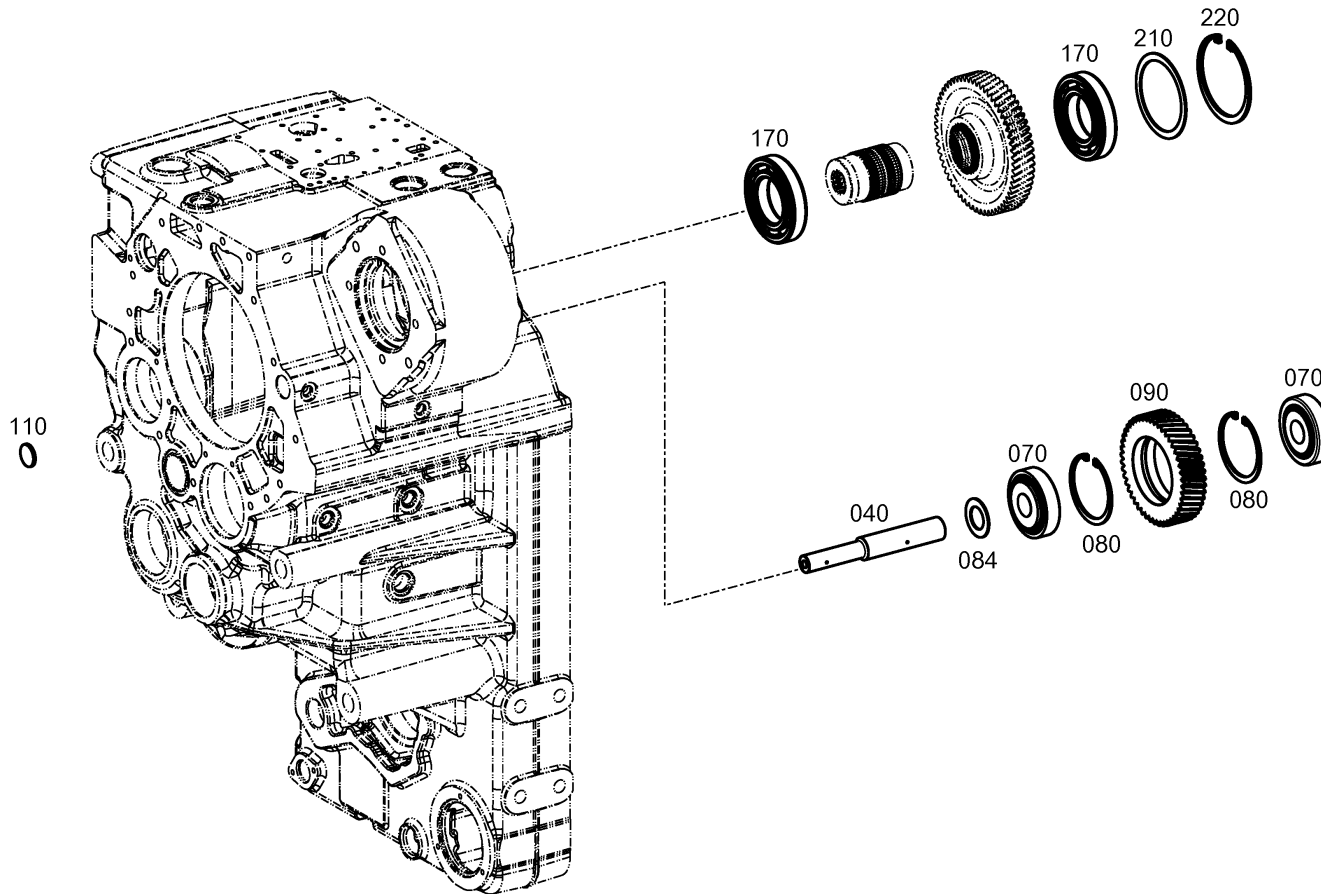
Material number: 4646.075.002

Picture: 464615600800

Material-assembly-group-no: 4646.156.008



5 WG 310 /
POWER TAKE-OFF



Picture

Page 1 from 1

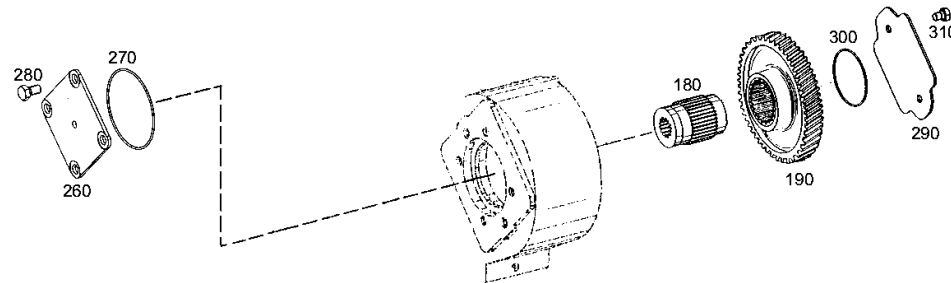
Material number: 4646.075.002

Picture: 464615643900

Material-assembly-group-no: 4646.156.439



5 WG 310 /
POWER TAKE-OFF



Picture

Page 1 from 2

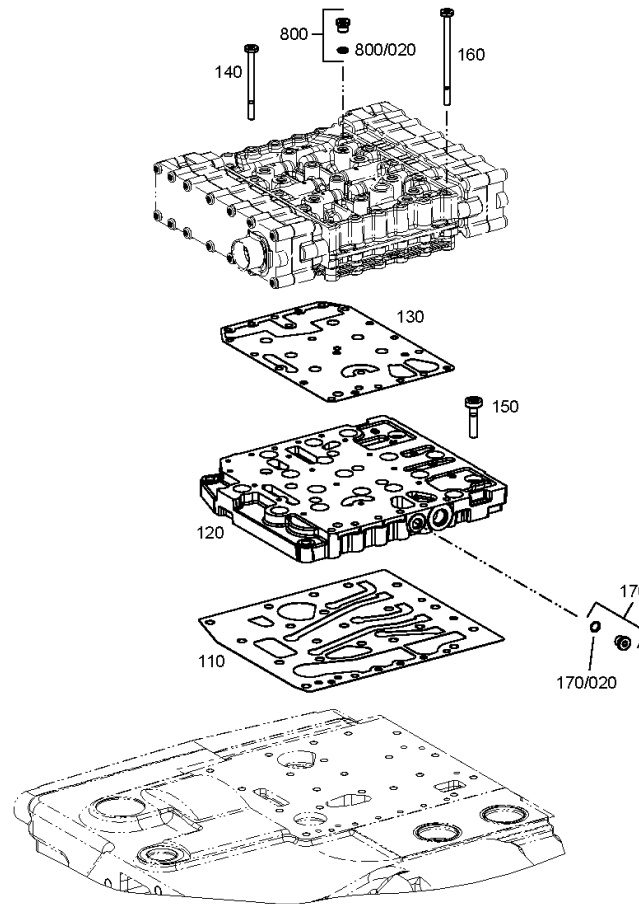
Material number: 4646.075.002

Picture: 464610602200

Material-assembly-group-no: 4646.106.022



5 WG 310 /
SHIFT SYSTEM



Picture

Page 2 from 2

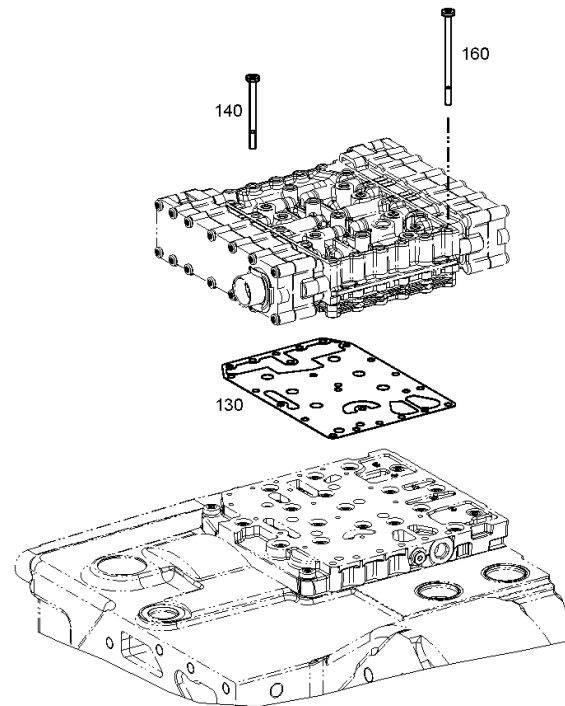
Material number: 4646.075.002

Picture: 464610602280

Material-assembly-group-no: 4646.106.022



5 WG 310 /
SHIFT SYSTEM



Picture

Page 1 from 8

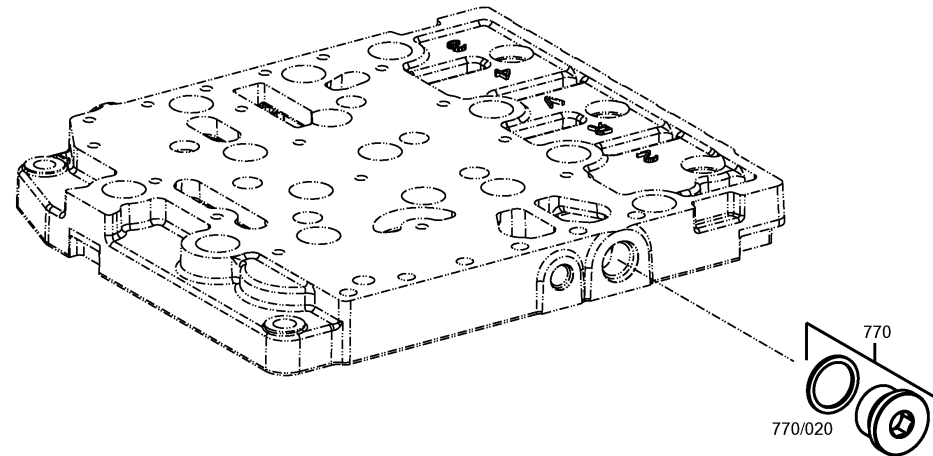
Material number: 4646.075.002

Picture: 465710640100

SHIFT SYSTEM



5 WG 310 /
SHIFT SYSTEM



Picture

Page 2 from 8

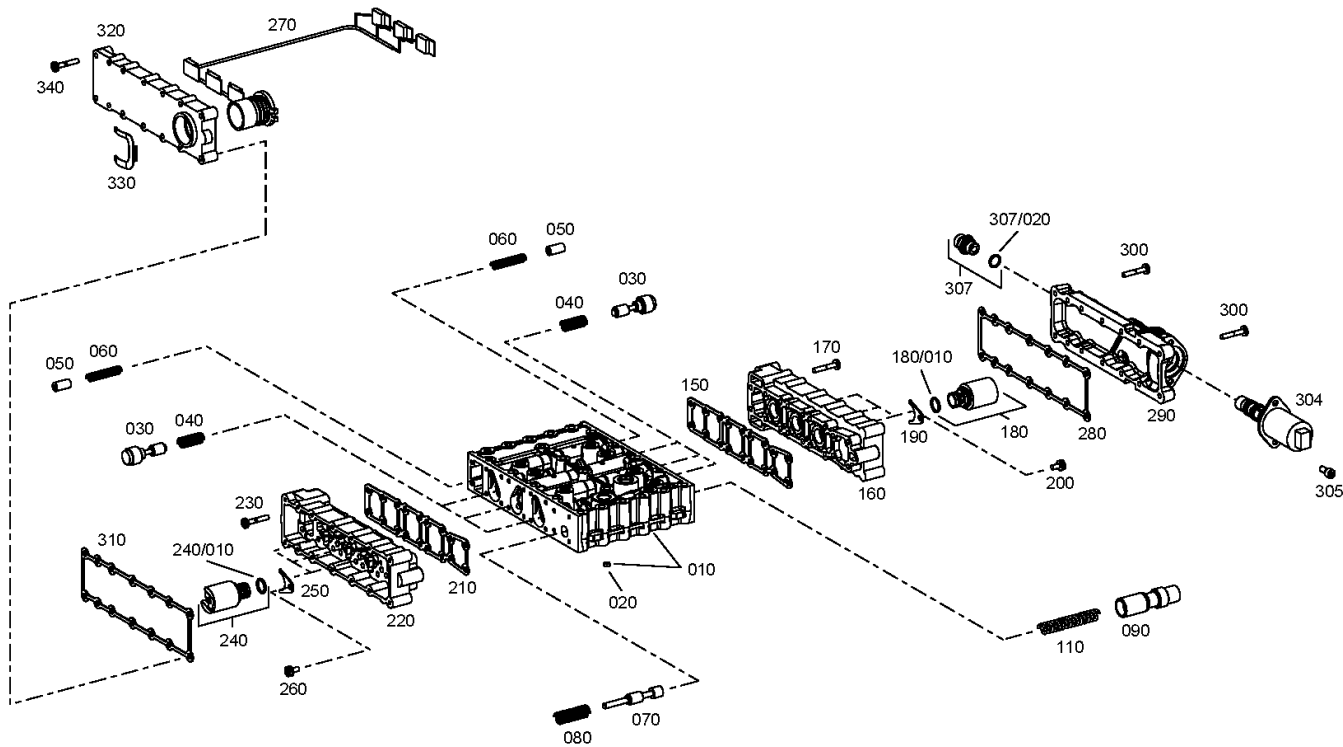
Material number: 4646.075.002

Picture: 465615901801

SHIFT SYSTEM



5 WG 310 /
SHIFT SYSTEM



Picture

Page 3 from 8

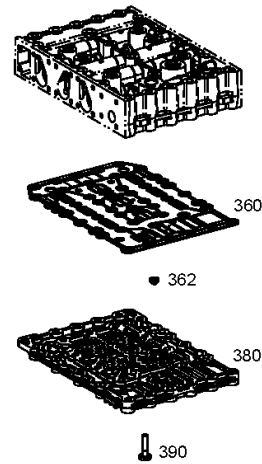
Material number: 4646.075.002

Picture: 465615901802

SHIFT SYSTEM



5 WG 310 /
SHIFT SYSTEM



Picture

Page 4 from 8

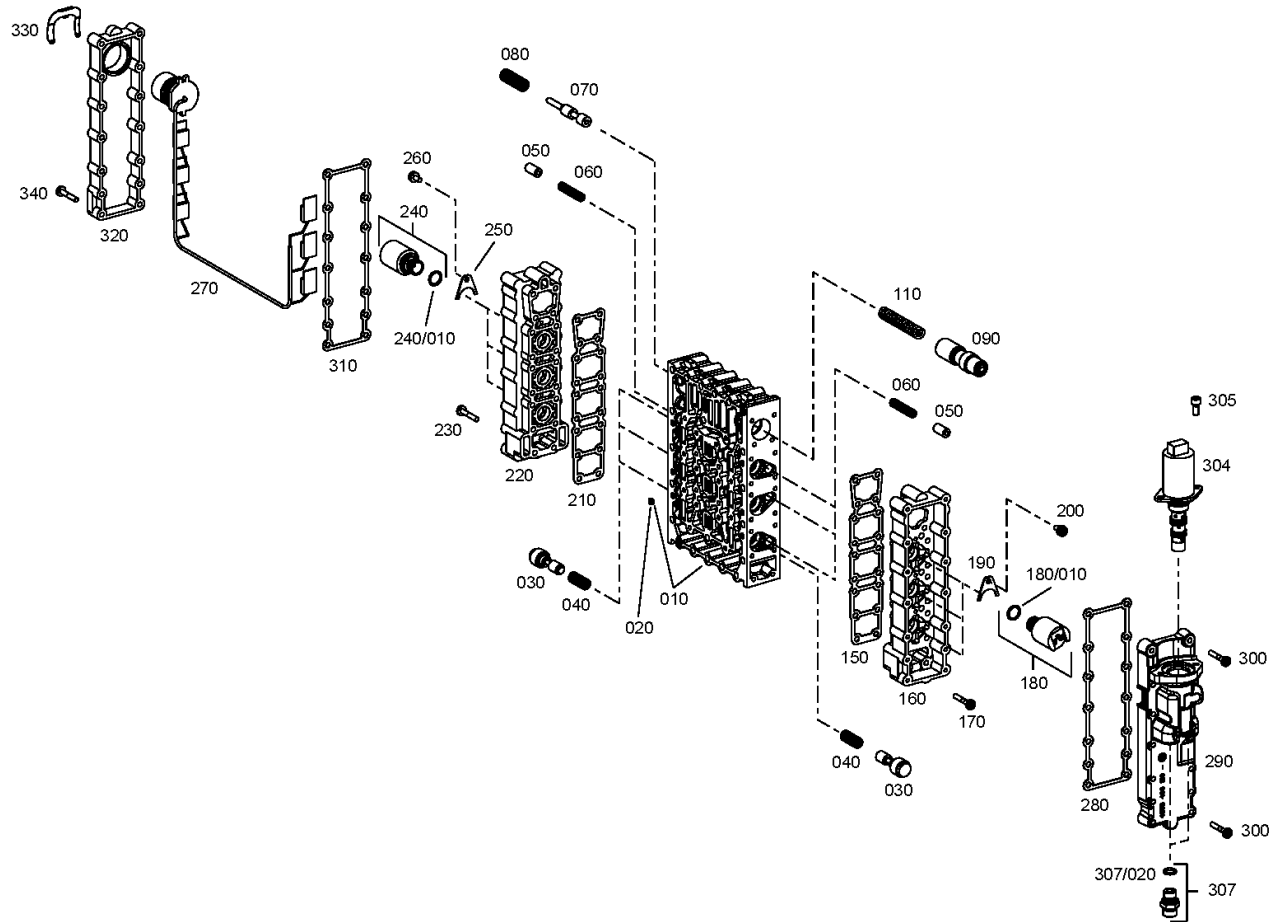
Material number: 4646.075.002

Picture: 465615901821

SHIFT SYSTEM



5 WG 310 /
SHIFT SYSTEM



Picture

Page 5 from 8

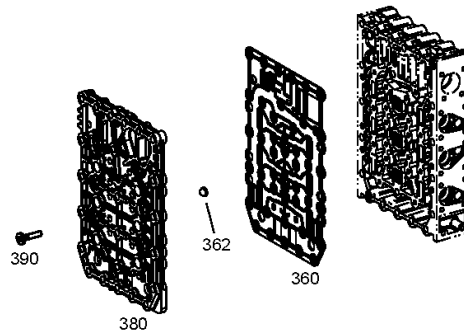
Material number: 4646.075.002

Picture: 465615901822

SHIFT SYSTEM



5 WG 310 /
SHIFT SYSTEM



Picture

Page 6 from 8

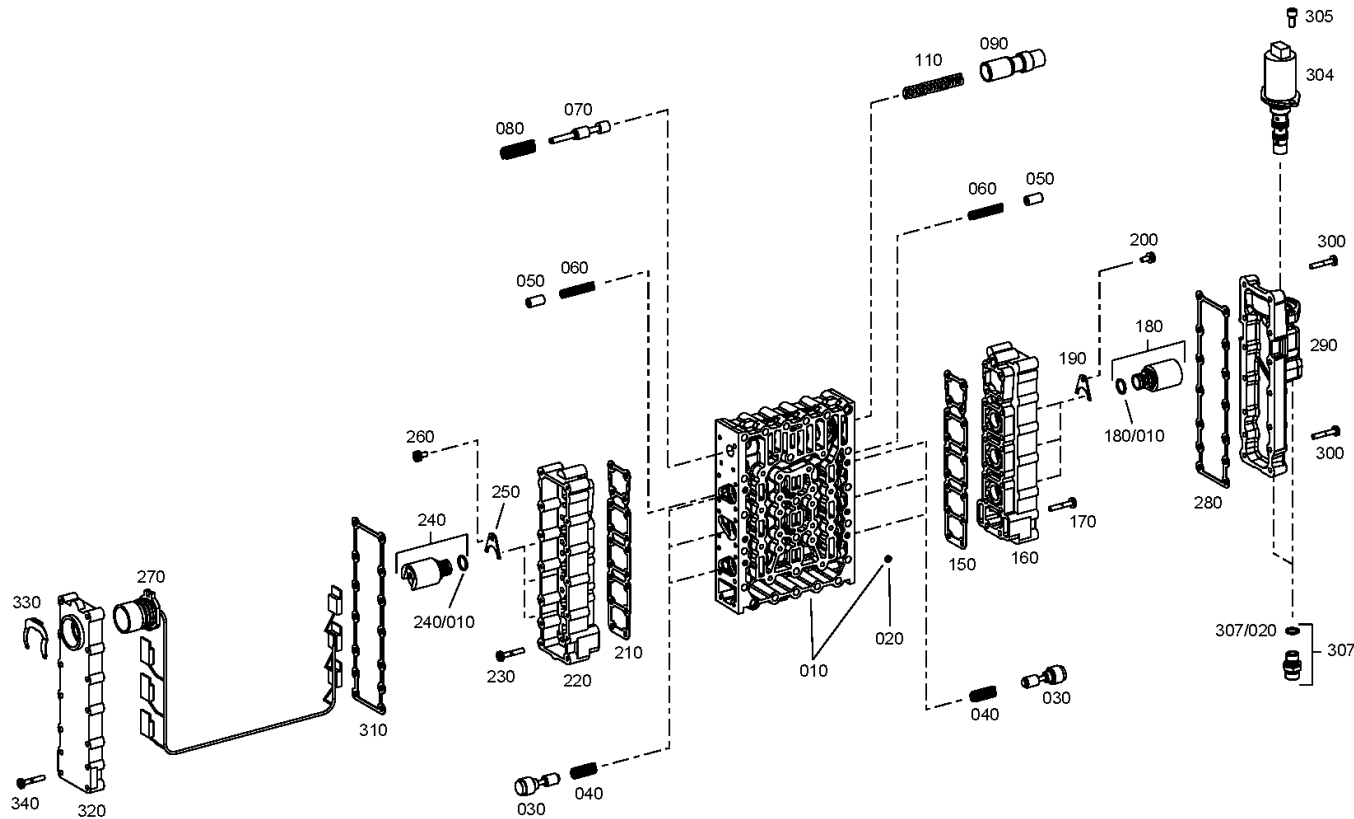
Material number: 4646.075.002

Picture: 465615901861

SHIFT SYSTEM



5 WG 310 /
SHIFT SYSTEM



Picture

Page 7 from 8

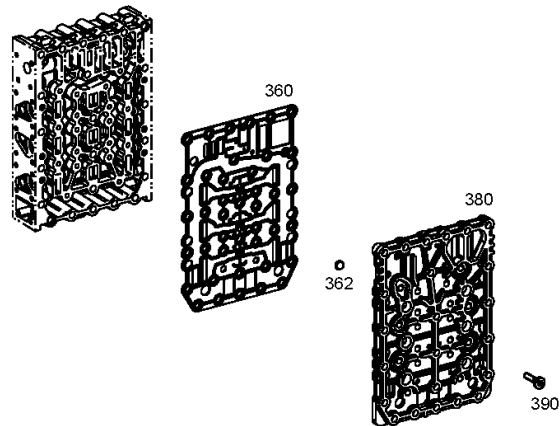
Material number: 4646.075.002

Picture: 465615901862

SHIFT SYSTEM



5 WG 310 /
SHIFT SYSTEM



Picture

Page 8 from 8

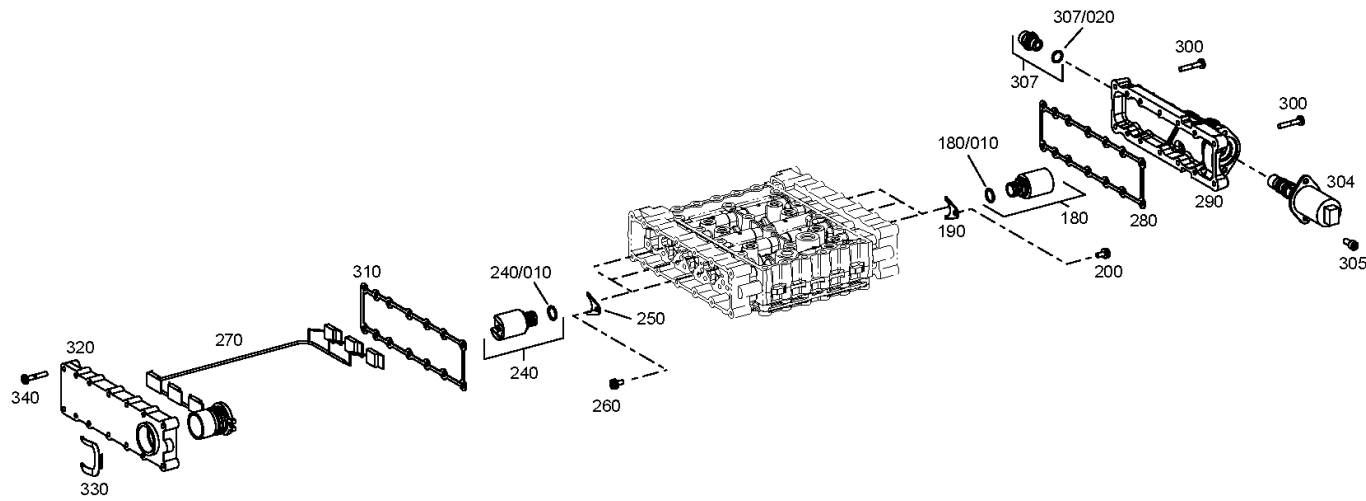
Material number: 4646.075.002

Picture: 465615901880

SHIFT SYSTEM



5 WG 310 /
SHIFT SYSTEM



Picture

Page 1 from 1

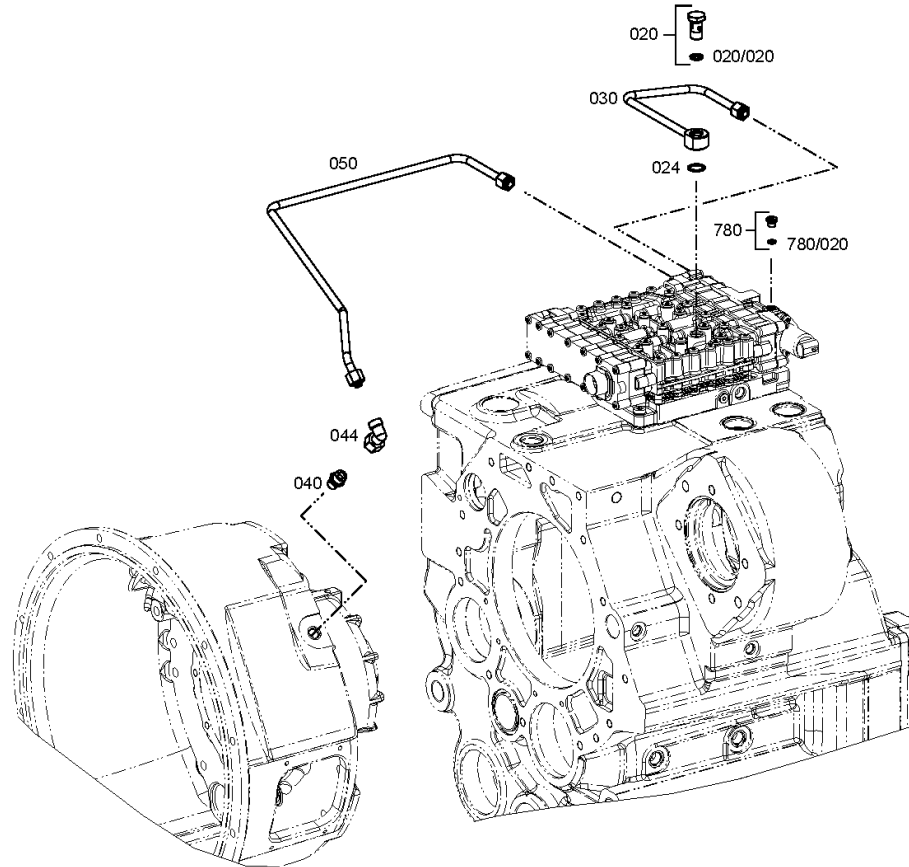
Material number: 4646.075.002

Picture: 464612300900

Material-assembly-group-no: 4646.123.009



5 WG 310 /
CONTROL UNIT



Picture

Page 1 from 1

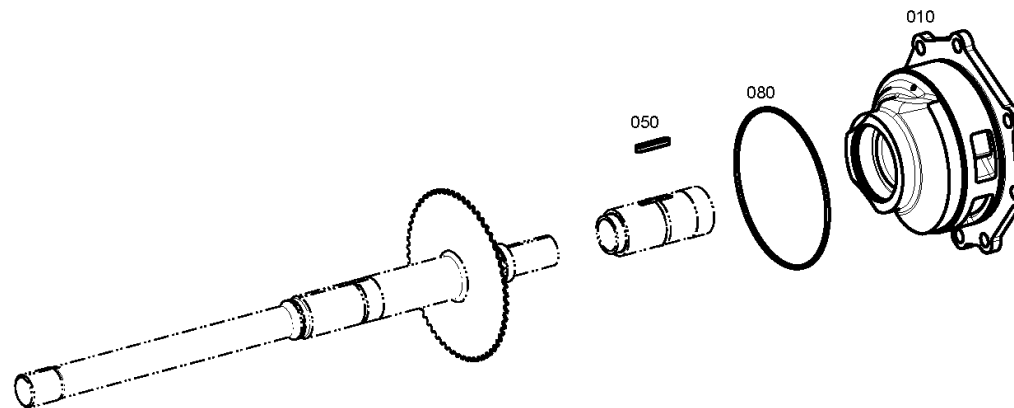
Material number: 4646.075.002

Picture: 464612201200

Material-assembly-group-no: 4646.122.012



5 WG 310 /
PRESSURE OIL PUMP



Picture

Page 1 from 1

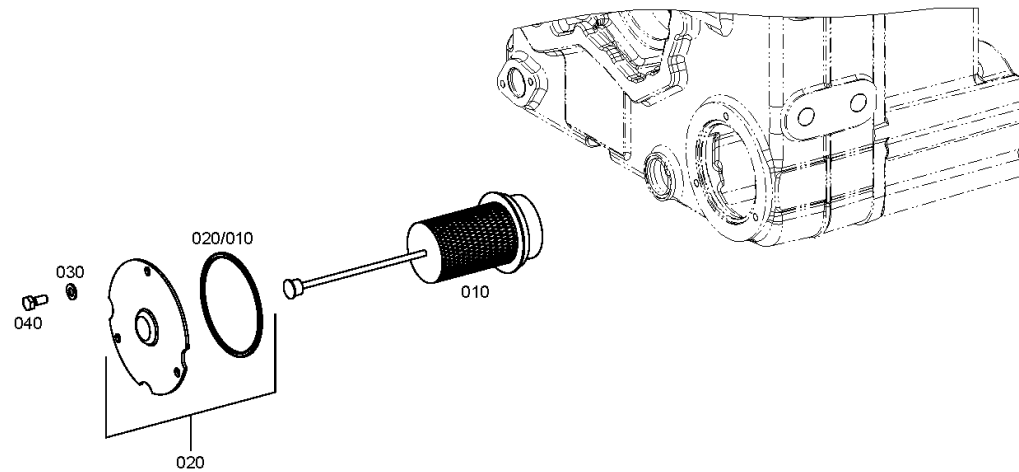
Material number: 4646.075.002

Picture: 464613800400

Material-assembly-group-no: 4646.138.004



5 WG 310 /
FILTER



Picture

Page 1 from 1

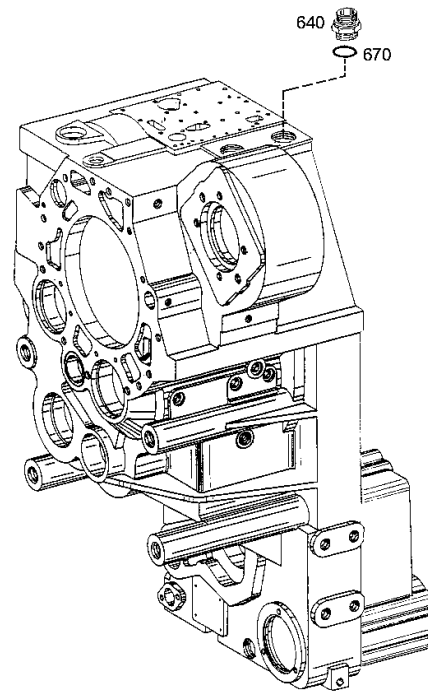
Material number: 4646.075.002

Picture: 464613840300

Material-assembly-group-no: 4646.138.403



5 WG 310 /
FILTER



Picture

Page 1 from 1

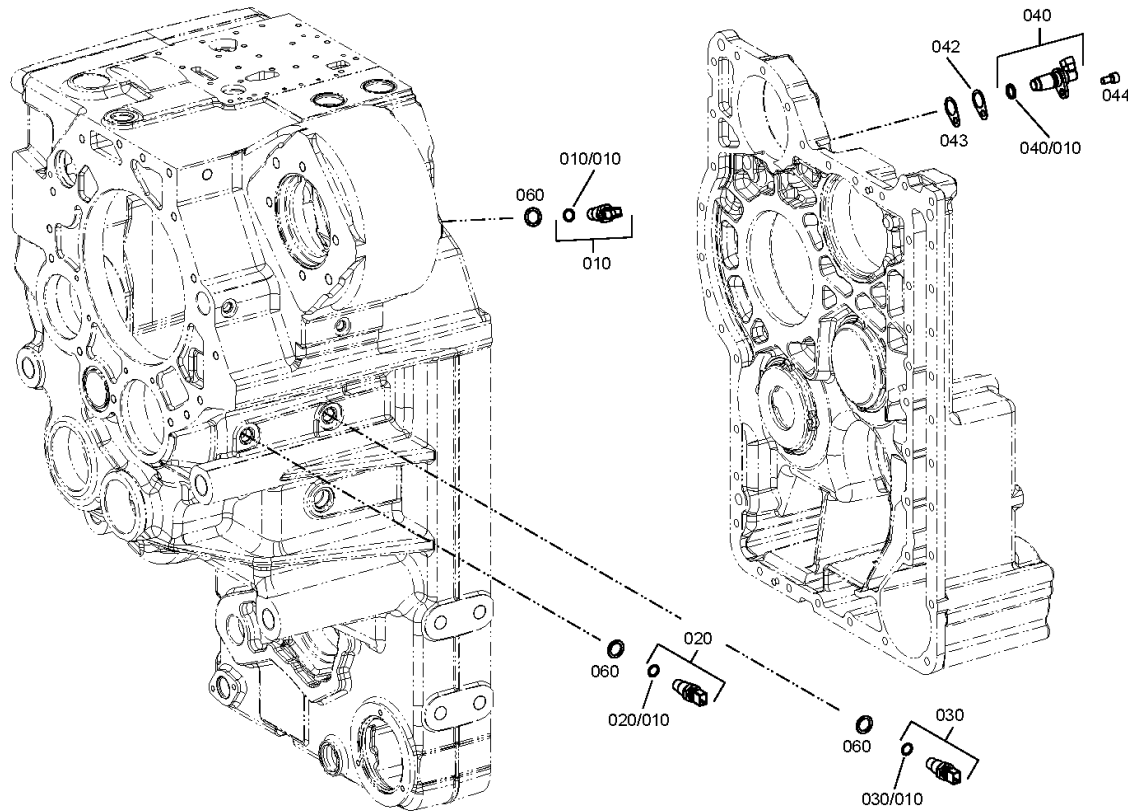
Material number: 4646.075.002

Picture: 464612502350

Material-assembly-group-no: 4646.125.023



5 WG 310 /
INDUCTIVE SENSOR



Picture

Page 1 from 1

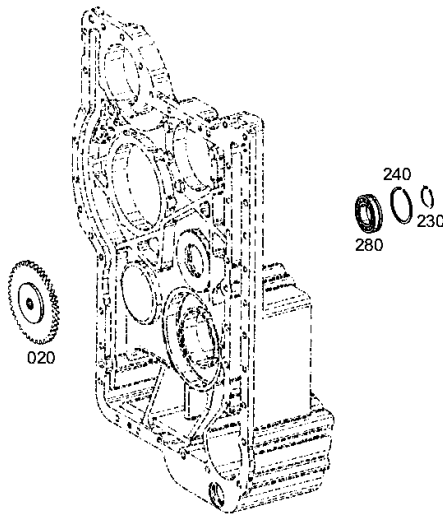
Material number: 4646.075.002

Picture: 464613702200

Material-assembly-group-no: 4646.137.022



5 WG 310 /
EMERGENCY STEERING PUMP



Picture

Page 1 from 1

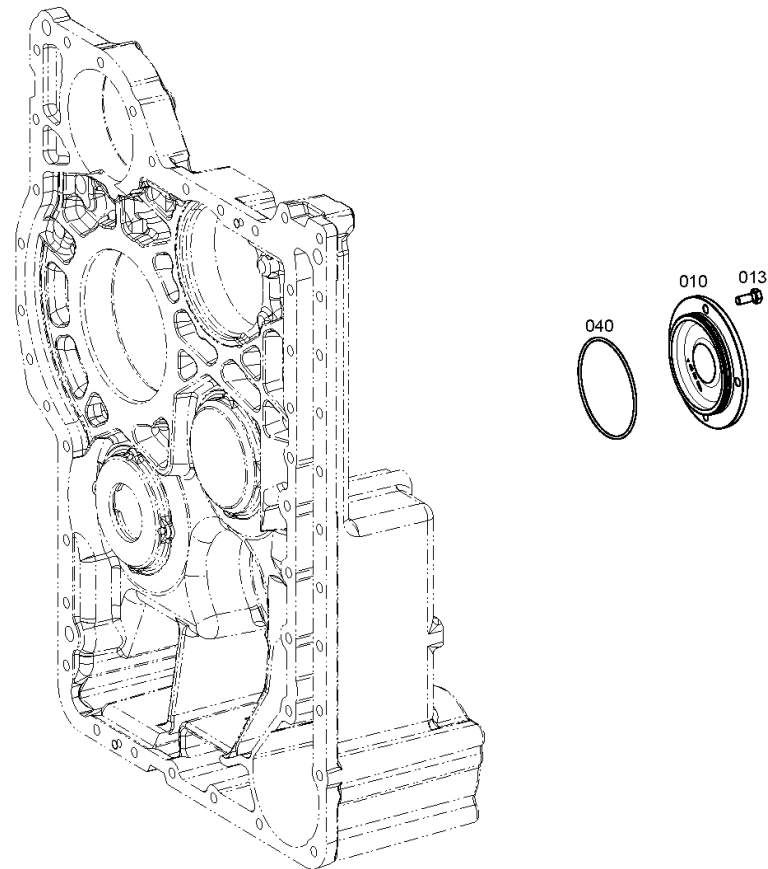
Material number: 4646.075.002

Picture: 464613741400

Material-assembly-group-no: 4646.137.414



5 WG 310 /
EMERGENCY STEERING PUMP



Picture

Page 1 from 1

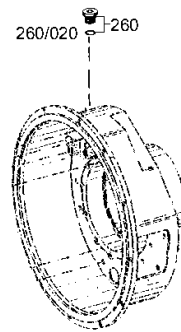
Material number: 4646.075.002

Picture: 464612400500

Material-assembly-group-no: 4646.124.005



5 WG 310 /
TEMPERATURE SENSOR



Picture

Page 1 from 1

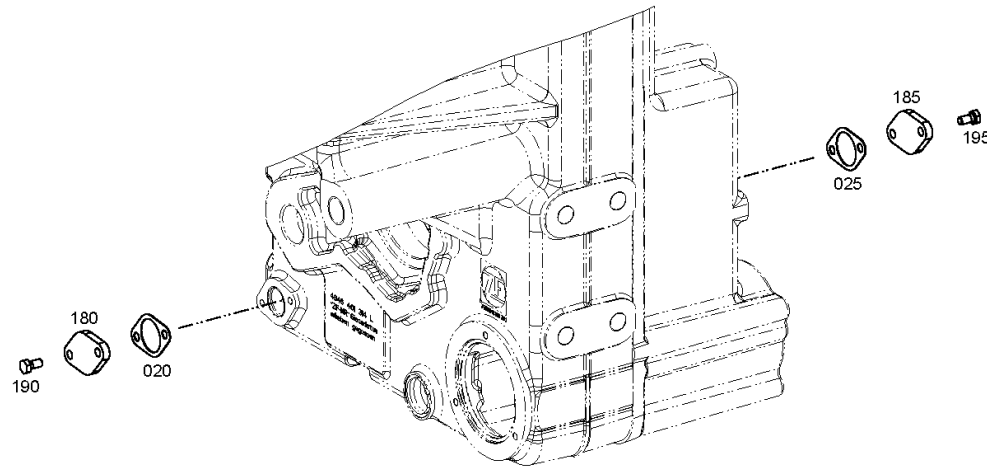
Material number: 4646.075.002

Picture: 464613101000

Material-assembly-group-no: 4646.131.010



5 WG 310 /
FILLER NOZZLE



Picture

Page 1 from 2

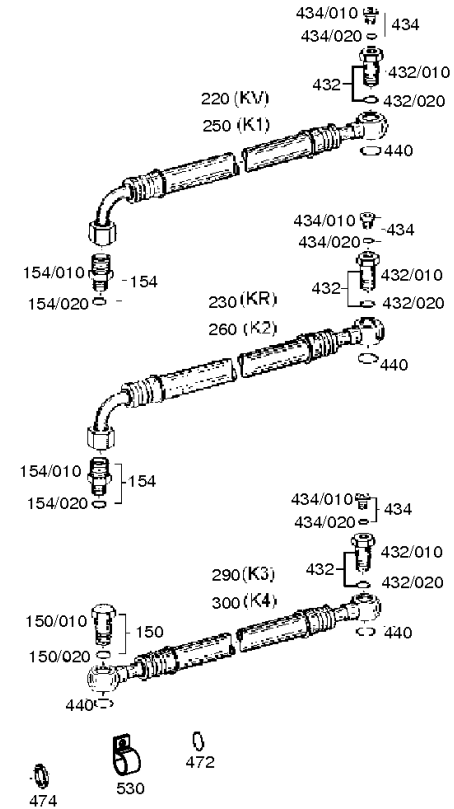
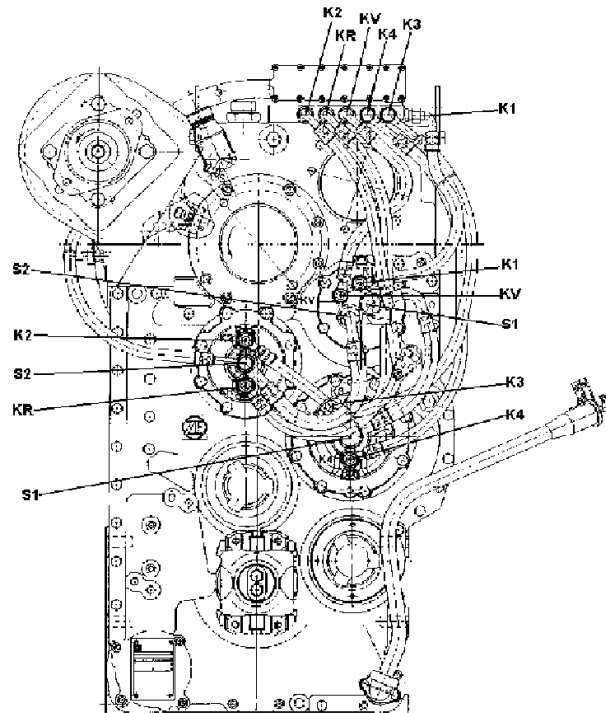
Material number: 4646.075.002

Picture: 464612107801

Material-assembly-group-no: 4646.121.078



5 WG 310 /
OIL PIPES



Picture

Page 2 from 2

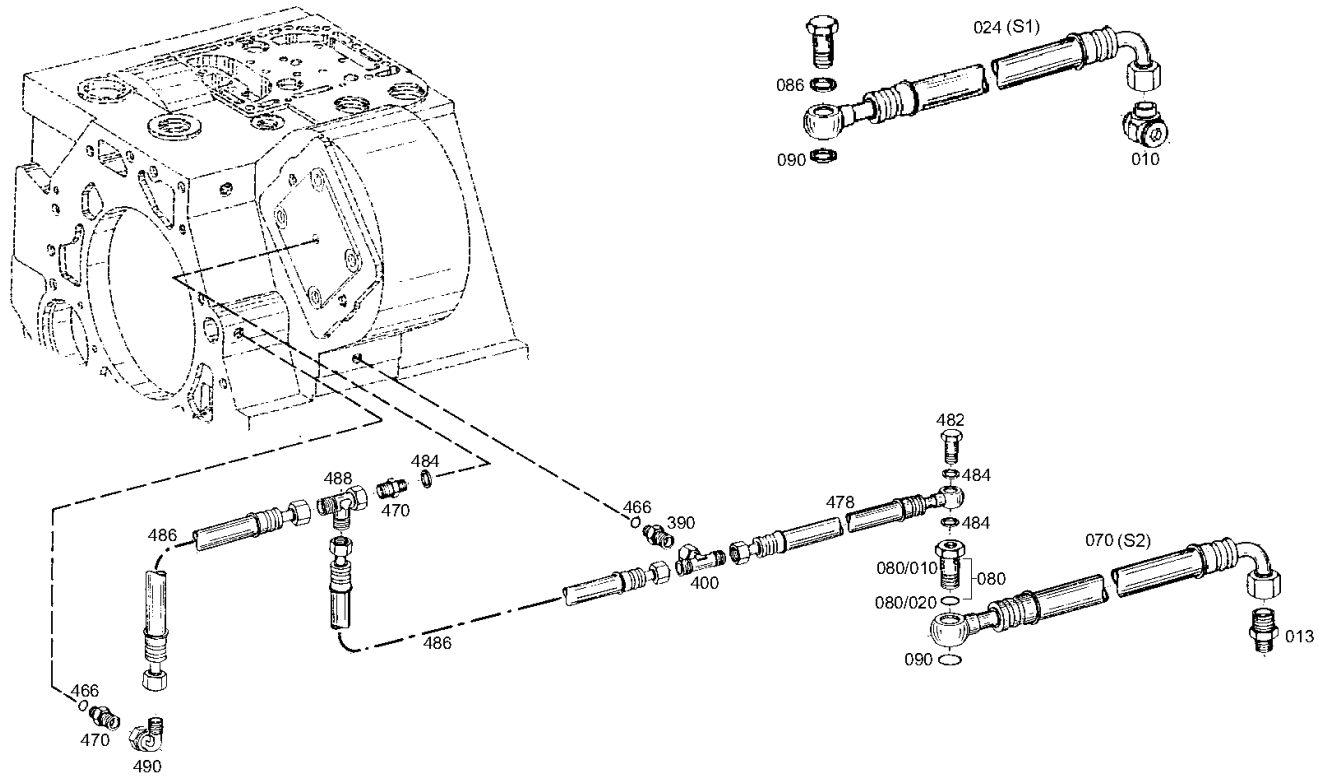
Material number: 4646.075.002

Picture: 464612107802

Material-assembly-group-no: 4646.121.078



5 WG 310 /
OIL PIPES



Picture

Page 1 from 1

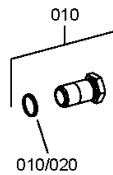
Material number: 4646.075.002

Picture: 464612141600

Material-assembly-group-no: 4646.121.416



5 WG 310 /
OIL PIPE



Picture

Page 1 from 1

Material number: 4646.075.002

Picture: 414313900100

Material-assembly-group-no: 4143.139.001



5 WG 310 /
TYPE PLATE



010