



Spare Parts Catalog

4 WG 100(500)

Material number: 4651.004.044

Current date: 15.10.1999

ZF Friedrichshafen AG
Hauptverwaltung
80038 Friedrichshafen
Deutschland

Telefon: +49 7541 77-0

Telefax: +49 7541 77-908000

www.zf.com

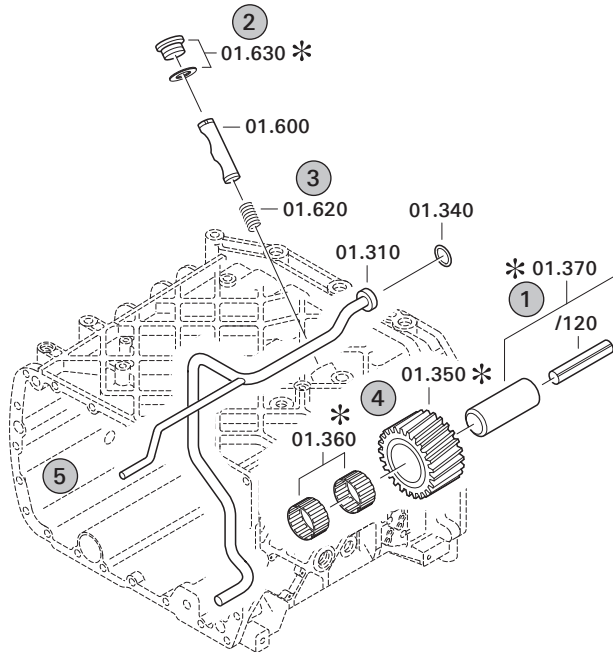
zuständiges Werk:
Passau

Notes relating to the spare parts catalog

Setup of the spare parts catalog

- Cover sheet
- Technical Cover (only in SDM print)
- Overview of figures
- Figure
- Associated parts list
- Next figure
- Associated parts list
- ...

Figure and parts list



Overview of figures

Bildtafel Figure	Sachnummer Product number	Benennung (Description)	Technische Info Technical info	Description (Benennung)	Menge Quantity	Einheit Unit
068.08.17	1316.170.001	AUSLEGER	WL	SHIFT TURRET	1	Stk
068.08.06	1316.170.031	DECKEL	WL*H-H *VM	COVER	1	Stk
068.08.14	1316.170.808	DECKEL	WL*AUSL+GEH*H-H*HF160N	COVER	1	Stk
08	1316.170.441	ANSCHLUSSTEILE	WL*NG-VORB*RG-SCHL*168N *BAJONETT	CONNECTING PARTS	1	Stk

The "gap" indicates that there is no separate graphics panel (poster) for this assembly
The parts of this assembly are shown with the same mid-section number on the figure

1 Positions and subpositions

Pos.	Sachnummer Product number	Benennung (Description)	Technische Info Technical info	Description (Benennung)	Menge Quantity	Einheit Unit
0370	1315.201.054	RUECKLAUFBOLZEN	KPL.16S151*SG*L= 79	REV.IDLER SHAFT	1	Stk
/0120	0631.329.293	SPANNSTIFT		SLOT. PIN	1	Stk

Positions marked with "/" are the individual items of a completion
For example: Position 0370 contains a centering pin with the position /0120

2 Combinations with standardized parts

Pos.	Sachnummer Product number	Benennung (Description)	Technische Info Technical info	Description (Benennung)	Menge Quantity	Einheit Unit
0630		VERSCHL.SCHR.		SCREW PLUG	1	Stk
	0636.302.067	VERSCHL.SCHR.		SCREW PLUG	1	Stk
	0634.801.249	DICHTRING	A 26 X 31	SEALING RING	1	Stk

The parts list shows the components included in the combination of standardized parts

3 Depiction of position/item number on the figure and in the parts list

01.620 - on the figure 01 relates to the assembly in which the position is included. Due to program-related reasons, it is shown on the figure.

0620 - in the parts list

Pos.	Sachnummer Product number	Benennung (Description)	Technische Info Technical info	Description (Benennung)	Menge Quantity	Einheit Unit
0620	0732.040.736	DRUCKFEDER		COMPRESSION SPRING	1	Stk

4 *-Positions

Positions marked with an * are optional i.e. inclusion in the parts list is not mandatory.
The following note is shown on the figure

je nach Stücklistenausführung
depending on spec. number
*
suivant la nomenclature
secondo la distinta base

5 Parts, dotted display

Parts with dotted display on the figure are only used for orientation of other parts

Technical Cover

Page 1 from 6

Material number: 4651.004.044



4 WG 100(500) /

Pos.	Information	Amendment number
	CUSTOMER:JCB-ENGLAND	
	CUSTOMER:	
	IDENT-NO:	
	CUSTOMER-NUMBER:	
	KUND.-SACHNR.: 04/806 300	
	CUSTOMER PART-NUMBER:	
	PROJEKT-NR.:38841	
	PROJECT-NO.:	
	VEHICLE DATA:	
	VEHICLE DATA:	
	RADLADER 416	
	WHEEL-LOADER	
	VEHICLE EMPTY WEIGHT: 8,50T	
	VEHICLE WEIGHT: EMPTY.....TO	
	VEHICLE WEIGHT: LOADED 11,00T	
	VEHICLE WEIGHT: LOADED.....TO	
	MOTOR: PERKINS 1004-4TW	
	ENGINE/MAKE/TYPER:	
	MOTORLEISTUNG: P= 85 KW BEI N=2200 UPM	
	ENGINE POWER:	
	ENGINE PERFORM.ACC.TO TRACTIVE EFFORT CALCUL.	
	ENGINE PERFORM.ACC.TO TRACTIVE EFFORT CALCUL.	
	DREHMOMENT: T= 430 NM BEI N=1400 UPM	
	INPUT TORQUE:	
	TYRES: 17.5-25	
	TIRES:	
	R.DYN. 0,600 M	
	ACHSUEBERSETZUNG:I A-GES.= 20,30	
	AXLE RATIO: I TOTAL=	
	MAX.SPEED: 36,0 KM/H	
	MAX.SPEED:	
	PRODUCT DESCRIPTION:	
	PRODUCT DESCRIPTION	



Pos.	Information	Amendment number
	TYP: 4WG-100	
	BEVEL SIDE GEAR SPLINE: N 38X1,25	
	EINBAU: ANGEFLANSCHT	
	INSTALLATION: FLANGE MOUNTED	
	RATIOS TOTAL:	
	RATIOS:	
	FORWARD:	
	FORWARD:	
	1.G=4,516 2.G=2,333 3.G=1,042 4.G=0,686	
	REVERSE:	
	REVERSE:	
	1.G=4,516 2.G=2,333 3.G=1,042	
	INPUT:	
	INPUT:	
	DIAPHRAGM	
	DIAPHRAGM	
	SAE-CONNECTION: 3	
	SAE-CONNECTION:	
	OUTPUT:	
	OUTPUT:	
	FLANSCH: DANA SPICER 1550 WANDLERSEITIG	
	FLANGE: CONVERTER SIDE	
	FLANSCH: D=150 BREMSSEITIG	
	FLANGE: BRAKE SIDE	
	POWER TAKE-OFF(PTO): NO SHIFTABLE	
	P.T.O.: NOT SHIFTABLE	
	COAX.ENGINE DRIVEN:	
	COAX.ENGINE DRIVEN:	
	GEAR SELECTION:	
	GEAR SELECTION:	
	CODE: G	
	CODE:	
	ELECTRICAL	



Pos.	Information	Amendment number
	ELECTRICAL:	
	MOUNTING POSIT.: LATERAL AT THE GEARBOX ABOVE	
	MOUNTING POSIT.:LATERAL AT THE GEARBOX ABOVE	
	VOLTAGE: 24 VOLT	
	VOLTAGE:	
	OPERATING PRES.: 16+2 BAR	
	OPERATING PRESSURE:	
	DRUCKSTEUERUNG: 2,5/4-13 BAR NR.14	
	PRESSURE CONTROLL:2,5/4-13 BAR NR5	
	CONNENCTION WIRING:CANNON SCREW CONNECTION	
	CONNECTION WIRING:CANNON SCREW CONNECTION	
	OIL INLET TO CONTROL:GEAR BOX	
	OIL INLET TO CONTROL:GEAR BOX	
	REPLENISHING OIL:WITH	
	REPLENISHING OIL:WITH	
	CONVERTER LOCK-UP CONTROL: WITHOUT	
	CONVERTER LOCK-UP CONTROL: WITHOUT	
	2-ST.DR.STEUERV.:MIT/K1	
	DOUBLE PRESSURE CONTROL VALVE: WITH	
	PRESS.CUT-OFF: WITHOUT	
	PRESS.CUT-OFF: WITHOUT	
	EINSTELLVORSCHRIFT: 4644 700 592 IN 467	
	SETTING SPECIFICATION	
	TEMP.GEBER F.OELTEMP.:MIT	
	TEMP.SENSOR FOR OIL: WITH	
	WARNING SWITCH F.OIL PRESSURE:WITH	
	WARNING SWITCH F.OIL PRESSURE:WITH	
	ENGAGING POINT: 10 BAR	
	ENGAGING POINT:	
	WARNING SWITCH F.OIL TEMPERATURE:WIHOUT	
	WARNING SWITCH F.OIL TEMPERATUR:WITHOUT	
	GEAR SELECTOR:	
	GEAR SELECTOR:	



Pos.	Information	Amendment number
	TYPE: DW 2 WITH EST-17 T	
	BEVEL SIDE GEAR SPLINE: N 38X1,25	
	REVERS.UP:TO IN ALL GEAR STEP	
	REVERS.UP:TO IN ALL GEARS	
	REV.INTERL.: NO	
	REV.INTERL.: NO	
	ELEKTRON.BAUSTEIN: SEPARATE BESTELLUNG	
	ELECTRON.MODULE: SEPARATE ORDER	
	WIRING: WITHOUT	
	WIRING: WITHOUT	
	INDUCTIVE SENSOR, OUTPUT SIDE: WITH	
	INDUCTIVE SENSOR,OUTPUT SIDE:WITH	
	PARKING BRAKE: WITHOUT	
	PARKING BRAKE: WITHOUT	
	SPEEDOMETER: WITHOUT	
	SPEEDOMETER: WITHOUT	
	OIL DIPSTICK: CONVERTER SIDE	
	OIL DIPSTICK: CONVERTER SIDE	
	AXLE DISCONNECT: NO	
	AXLE DISCONNECT: WITHOUT	
	ZF-FILTER: INTEGRIERT	
	ZF-FILTER: INTEGRATED	
	T-CONVERTER:	
	TORQUE CONVERTER:	
	BEZEICHNUNG: 30 H 111	
	MARKING:	
	GRUNDKURVE: 02 G 059 31 L.F.	
	CHARACTERISTICS:	
	ANFAHRWANDLUNG: 2,30	
	START.TORQUE RAT.:	
	STATOR FREEWHEEL:WITHOUT	
	STATOR FREEWHEEL:WITHOUT	
	BREAK FREEWHEEL: WITHOUT	



Pos.	Information	Amendment number
	BRAKE FREEWHEEL: WITHOUT	
	MASSENTRAEGH.MD: J=0,134 KGM2	
	INERTIA TORQUE:	
	LOCK-UP CLUTCH: WITHOUT	
	T-CONV.AND CLUTCH SYSTEM: WITHOUT	
	GROUND DRIV.PUMP: WITHOUT	
	GROUND DRIV.PUMP: WITHOUT	
	DRAWINGS:	
	DRAWINGS:	
	SCHNITT: 4651 000 001(0)	
	SECT.DRAWING:	
	EINBAU: 4651 604 032(0)	
	INST.DRAWING:	
	MOTOR-ANBAU: 4651 500 037()	
	ENGINE CONN.:	
	GETR.SCHEMA: 4651 700 009(4)	
	TRANSM.DIAGRAM:	
	OEL-SCHEMA: 4651 700 082(1)	
	OIL-DIAGRAM:	
	WIRING DIAGRAM:	
	OIL PIPI:	
	OIL PIPE:	
	WANDLER: 4168 030 085(2)	
	TORQUE CONVERTER:	
	CALCULATIONS:	
	CALCULATIONS:	
	ZUGKRAFT: 4651 706 611	
	TR.FORCE DIAGRAM:	
	ZUGKRAFT: ()	
	TR.FORCE DIAGRAM:	
	PRUEFANWEISUNG: 4651 760 005(3)	
	TEST SPECIFICATION:	
	INST.SPECIF.:4644 700 711()	



Pos.	Information	Amendment number
	INSTALLATION SPECIFICATION:	
	DRAWING FOR ELECTR.PARTS	
	DRAWING FOR ELECTR.PARTS	
	FAHRSCHALTER:6006 630 034()EBZ	
	CONTROL UNIT:6009 654 001	
	STROMLAUFPL.:6006 700 581()FS	
	ANSCHL.PLAN: 6029 700 594()	
	OELEINFUELLMENGE: CA. 17 L	
	OIL CAPACITY:	
	GESAMT: CA. 17,00L	
	TOTAL: CA.29,00L	
	OIL FILLING: NO	
	OIL FILLING: NO	
	OIL GRADE:SPECIFICATION TE ML 03	
	OIL GRADE:SPECIFICATION TE ML 03	
	GESAMT-TROCKENMASSE: 272KG	
	WEIGHT/MASS (DRY):	
	COLOUR: 5 BLACK RAL 9005	
	COLOR:	
	PACKING:	
	PACKING:	
	AGGREGAT OHNE ASBESTHALTIGE TEILE	
	COMPONENTS OF THIS ASSEMBLY WITHOUT ASBESTOS	
	ASSEMBLY INSTRUCTION:	
	MOUNTING HINTS:	
	MISCELLANEOUS/REMARKS:	
	MISCELLANEOUS/REMARKS	
	SEP.BESTELLUNG DER ELEKTROTEILE	
	SEP.BESTELLUNG EST-25 6009 047 101 NACH 0899 004 511	
	SEP.BESTELLUNG EST-25 6009 047 114 NACH 0899 004 652	
	TYPENSCHILD MIT KUND.-SACHNR.: BESCHRIFTET (POS A18)	
	*	

Assembly group overview

Page 1 from 2



Material number: 4651.004.044

4 WG 100(500) /

Graphics	Pos.	Material number	Name	Quantity	Amend. no.	Techn. Info.
465113000300	270	4651.130.007	ENGINE CONNECTION	1		
416603011100	500	4166.030.111	CONVERTER	1		
465112200100	220	4651.122.002	PRESSURE OIL PUMP	1		
465110200300	30	4651.102.003	INPUT	1		
465110100701	10	4651.101.007	TRANSMISSION HOUSING	1		
465110100702	11	4651.101.401	TRANSMISSION HOUSING	1		
465110800400	150	4651.108.001	COUNTERSHAFT	1		
465115101200	350	4651.151.009	COUPLING	1		
465115201100	370	4651.152.011	COUPLING	1		
465115300500	390	4651.153.003	CLUTCH	1		
465110301700	50	4651.103.001	OUTPUT	1		
465110301502	60	4651.103.404	OUTPUT	1		
465110900201	170	4651.109.003	PARKING BRAKE	1		
465110900202	180	4651.109.405	PARKING BRAKE	1		
465115400700	410	4651.154.004	POWER TAKE-OFF	1		
465110601600	110	4651.106.023	SHIFT SYSTEM	1		

Assembly group overview

Page 2 from 2



4 WG 100(500) /

Material number: 4651.004.044

Graphics	Pos.	Material number	Name	Quantity	Amend. no.	Techn. Info.
464415903700	120	4644.159.301	SHIFT SYSTEM	1		
465113800100	330	4651.138.001	FILTER	1		
465112000200	190	4651.120.001	PRESSURE REGULATOR	1		
465113700100	310	4651.137.001	EMERGENCY STEERING PUMP	1		
465112500500	250	4651.125.005	INDUCTIVE SENSOR	1		
465113100700	290	4651.131.007	OIL DIPSTICK	1		
465119902300	490	4651.199.024	LOOSE PARTS	1		

Plant

Page 1 from 1

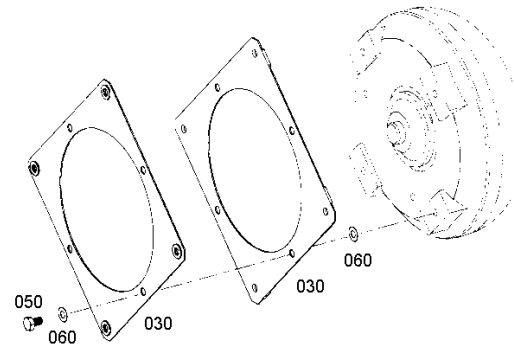
Material number: 4651.004.044

Plant: 465113000300

Material-assembly-group-no: 4651.130.007



4 WG 100(500) /
ENGINE CONNECTION



Parts list

Page 1 from 1

Material number: 4651.004.044

Plant: 465113000300

Material-assembly-group-no: 4651.130.007



4 WG 100(500) /

Pos.	Material number	Customer material	Name	Quantity	ME	Amend. no.	Techn. Info.	Rep kit	Alternative material
30	4651.230.001		DIAPHRAGM	2			A=345,0		
50	0636.015.270		HEXAGON SCREW	4			M10X16		
60	0730.100.462		THRUST WASHER	8			A=1,00 IN 0730 109 907(2)		

Plant

Page 1 from 1

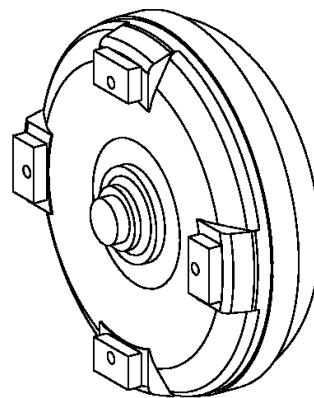
Material number: 4651.004.044

Plant: 416603011100

Material-assembly-group-no: 4166.030.111



4 WG 100(500) /
CONVERTER



010

Plant

Page 1 from 1

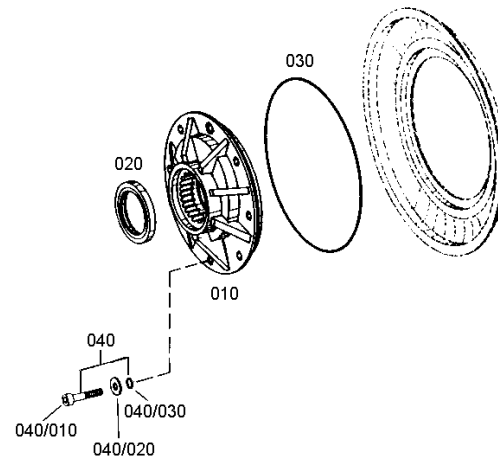
Material number: 4651.004.044

Plant: 465112200100

Material-assembly-group-no: 4651.122.002



4 WG 100(500) /
PRESSURE OIL PUMP



Plant

Page 1 from 1

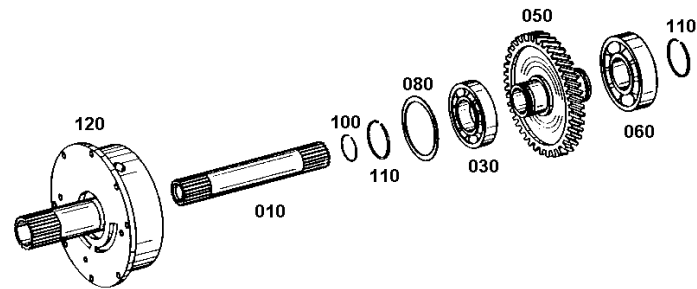
Material number: 4651.004.044

Plant: 465110200300

Material-assembly-group-no: 4651.102.003



4 WG 100(500) /
INPUT



Plant

Page 1 from 1

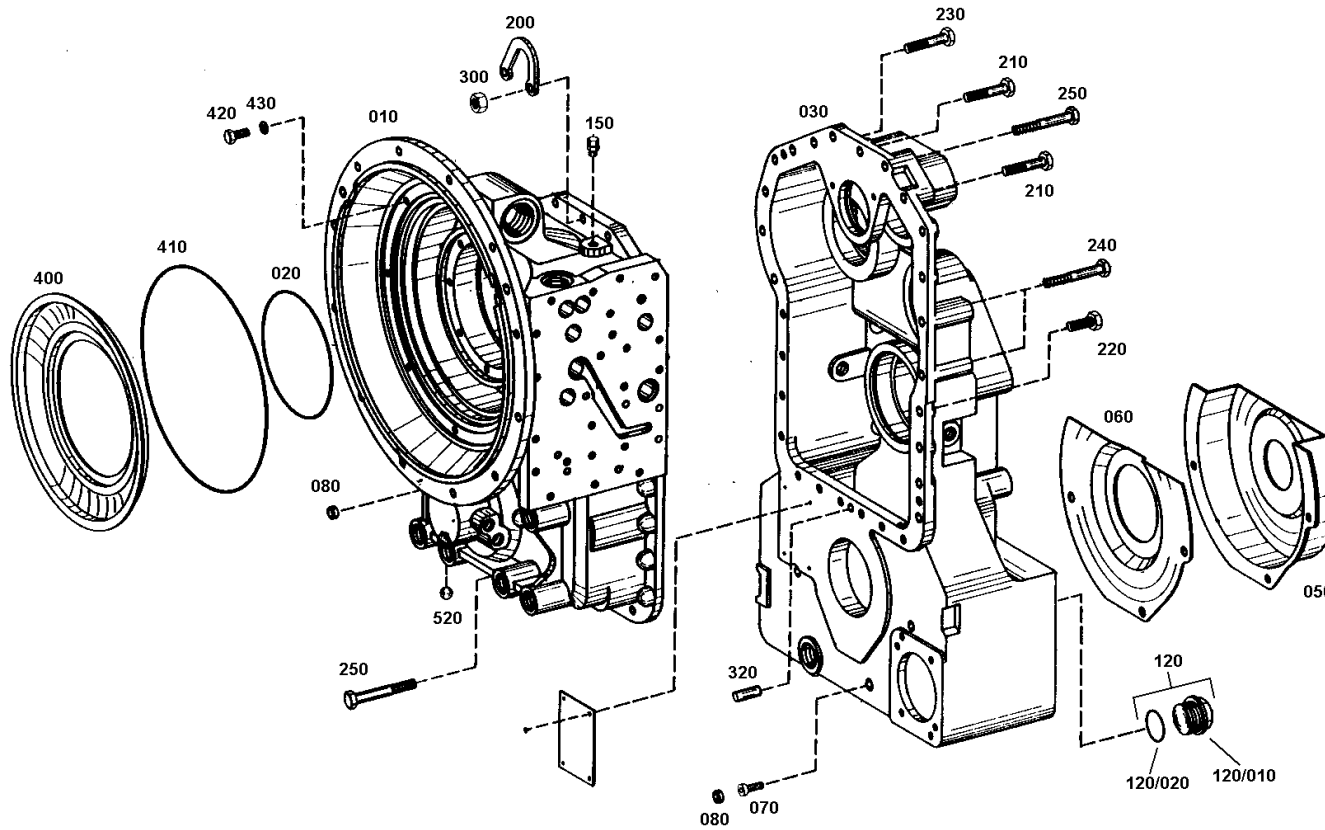
Material number: 4651.004.044

Plant: 465110100701

Material-assembly-group-no: 4651.101.007



4 WG 100(500) /
TRANSMISSION HOUSING



Plant

Page 1 from 1

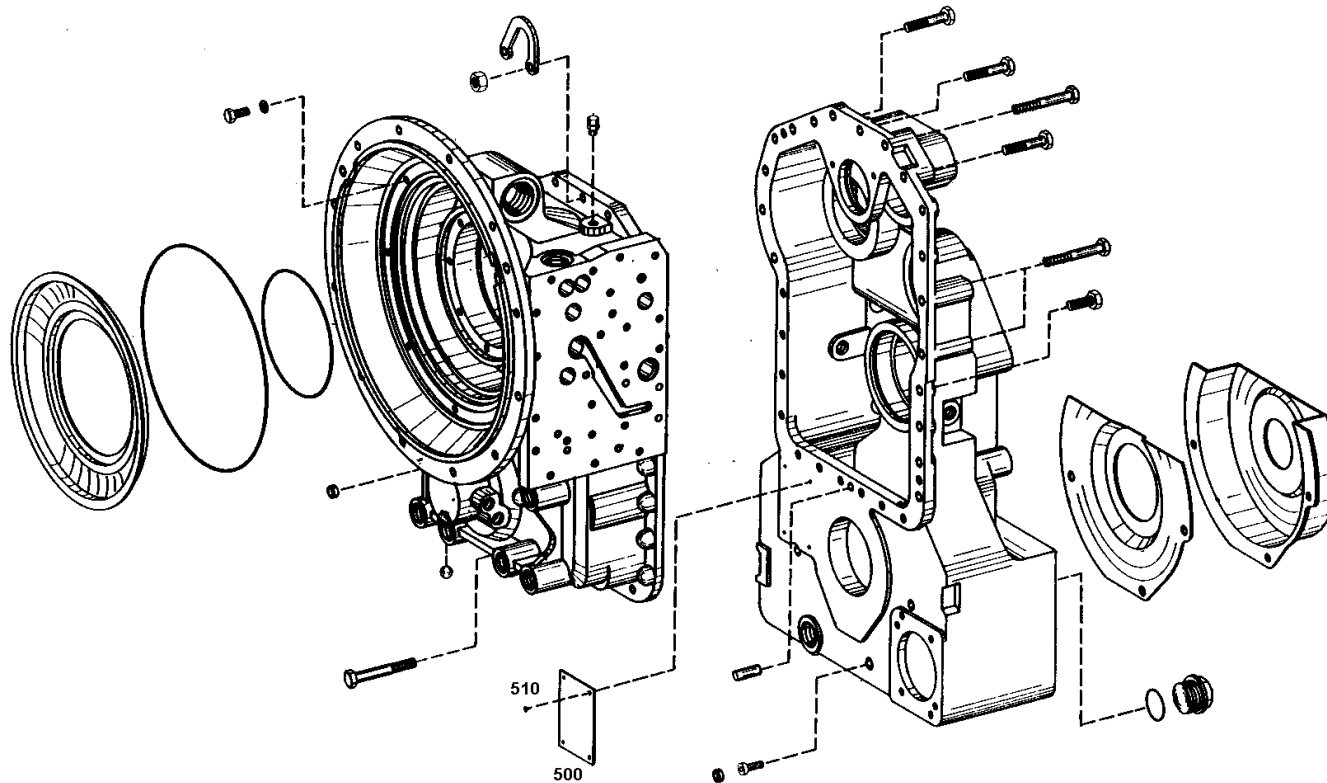
Material number: 4651.004.044

Plant: 465110100702

Material-assembly-group-no: 4651.101.401



4 WG 100(500) /
TRANSMISSION HOUSING



Plant

Page 1 from 1

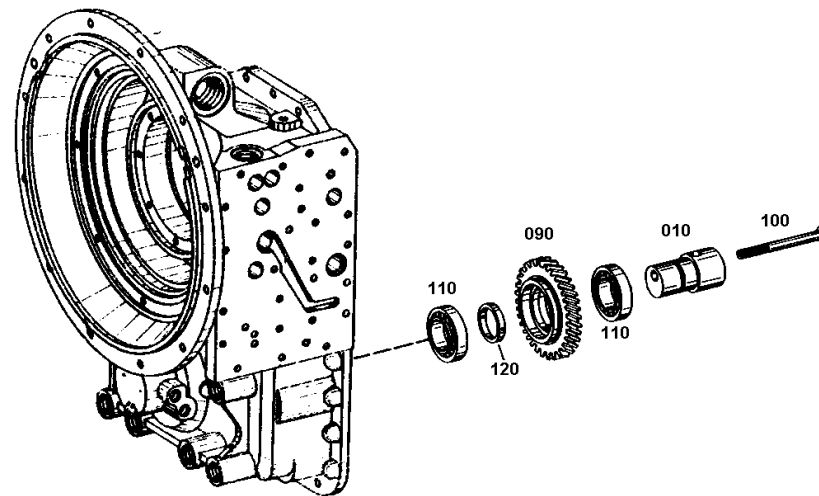
Material number: 4651.004.044

Plant: 465110800400

Material-assembly-group-no: 4651.108.001



4 WG 100(500) /
COUNTERSHAFT



Plant

Page 1 from 1

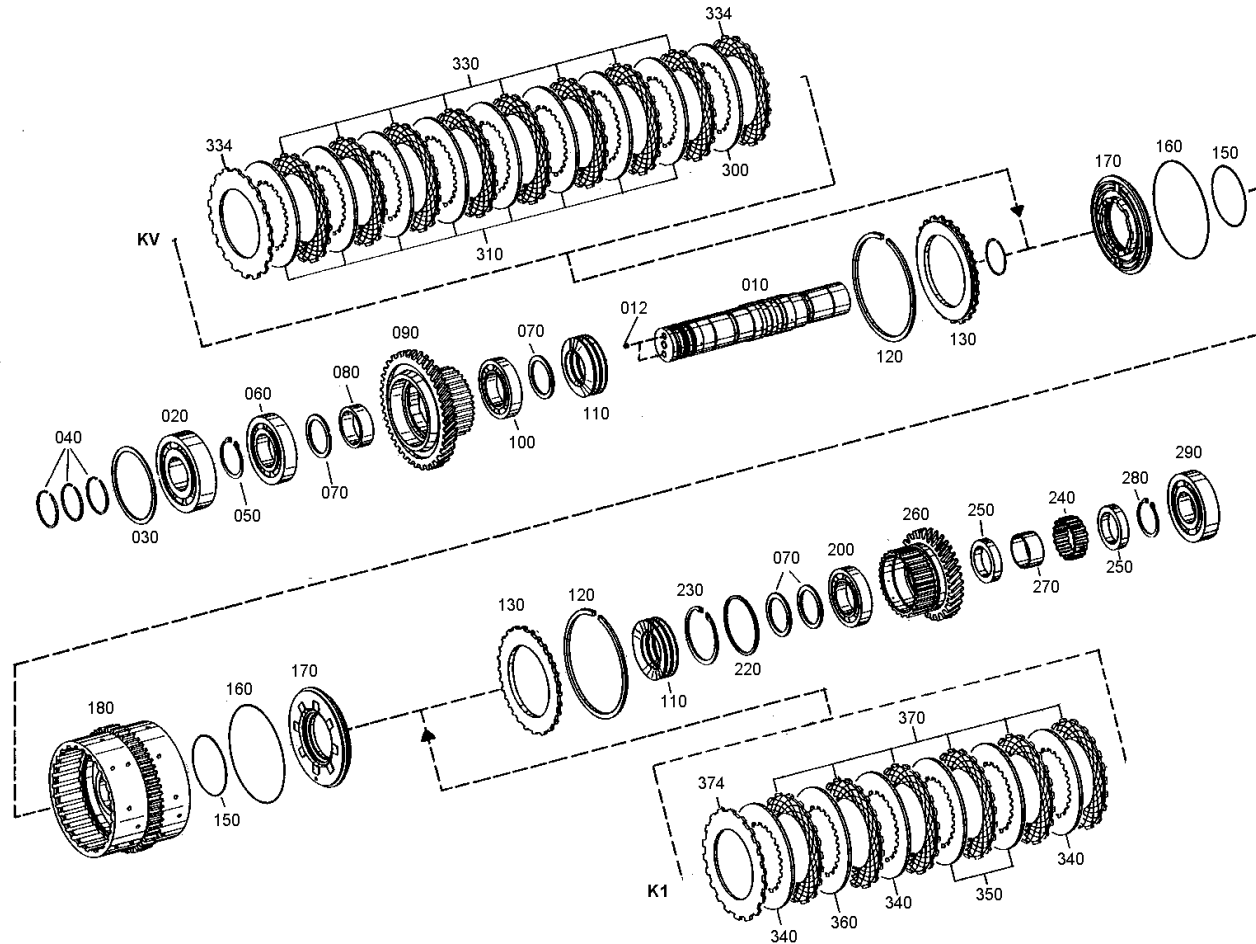
Material number: 4651.004.044

Plant: 465115101200

Material-assembly-group-no: 4651.151.009



4 WG 100(500) /
COUPLING



Plant

Page 1 from 1

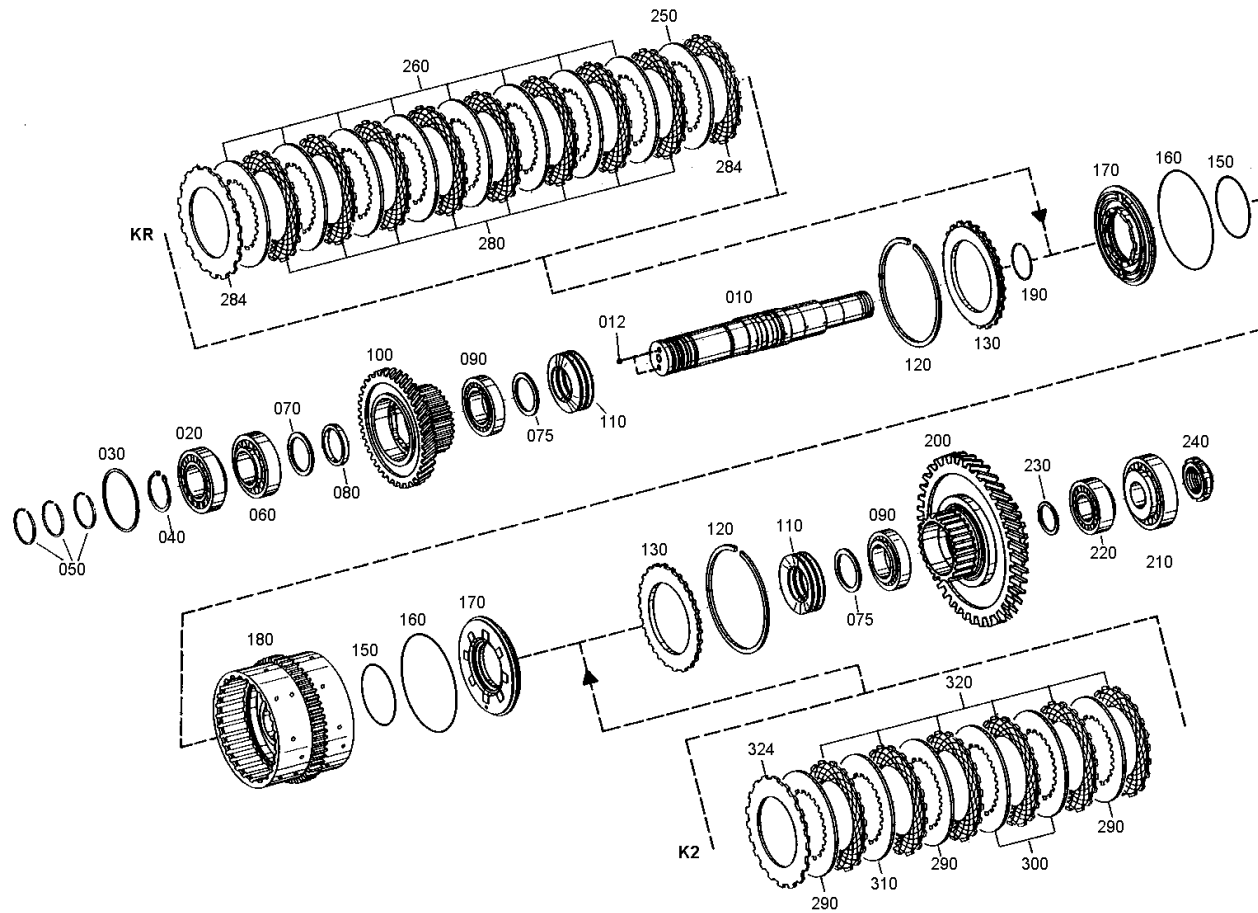
Material number: 4651.004.044

Plant: 465115201100

Material-assembly-group-no: 4651.152.011



4 WG 100(500) /
COUPLING



Plant

Page 1 from 1

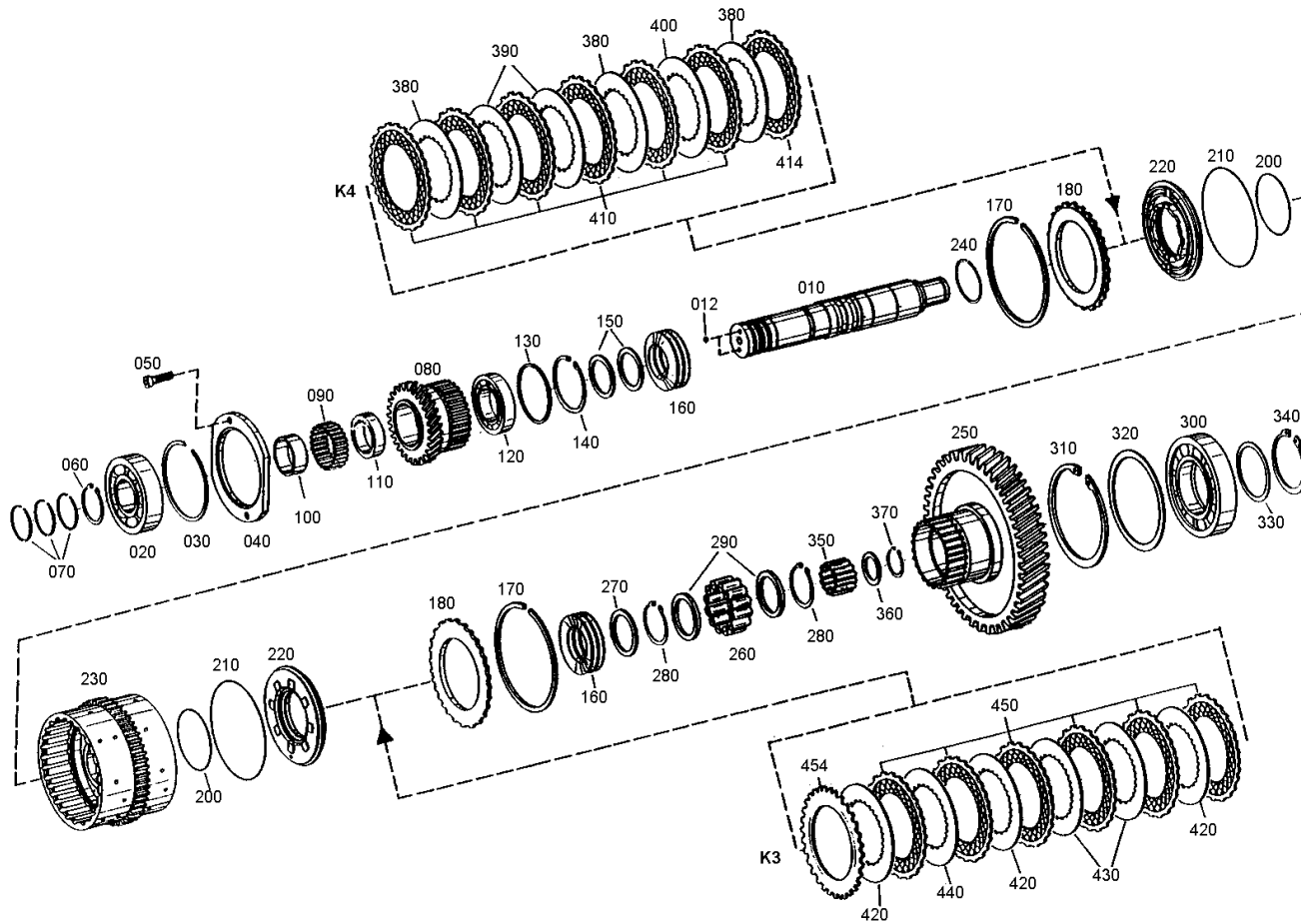
Material number: 4651.004.044

Plant: 465115300500

Material-assembly-group-no: 4651.153.003



4 WG 100(500) /
CLUTCH



Plant

Page 1 from 1

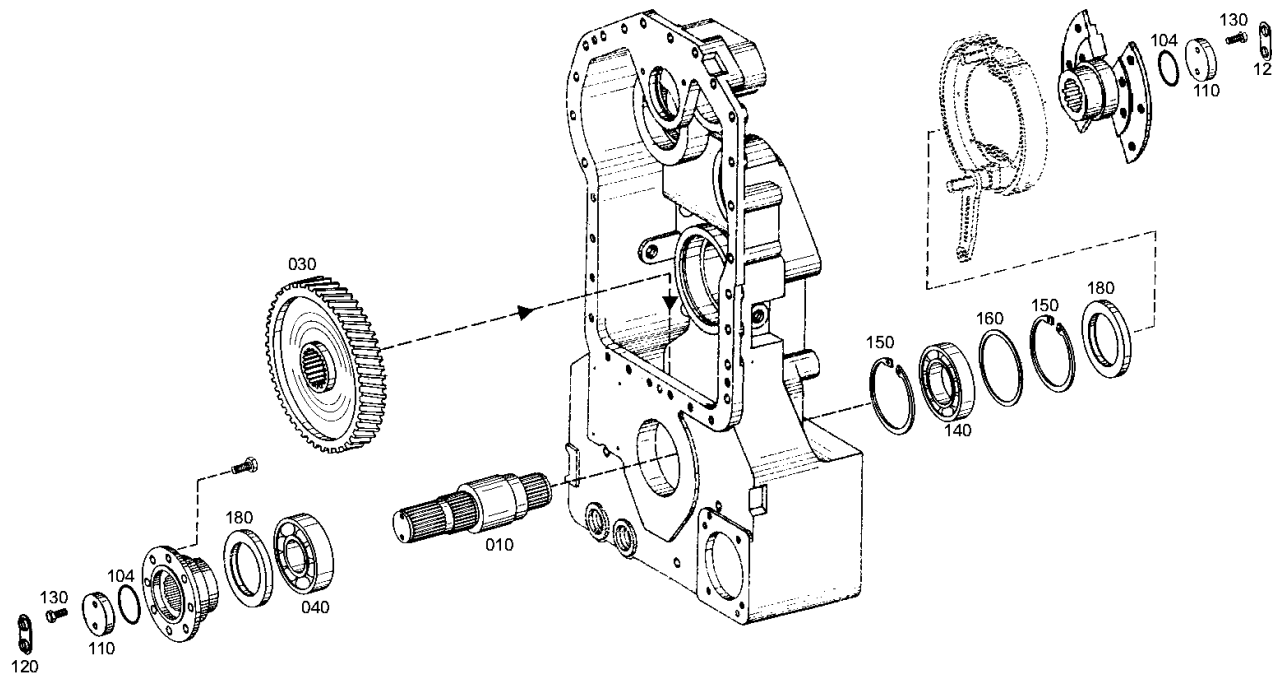
Material number: 4651.004.044

Plant: 465110301700

Material-assembly-group-no: 4651.103.001



4 WG 100(500) /
OUTPUT



Plant

Page 1 from 1

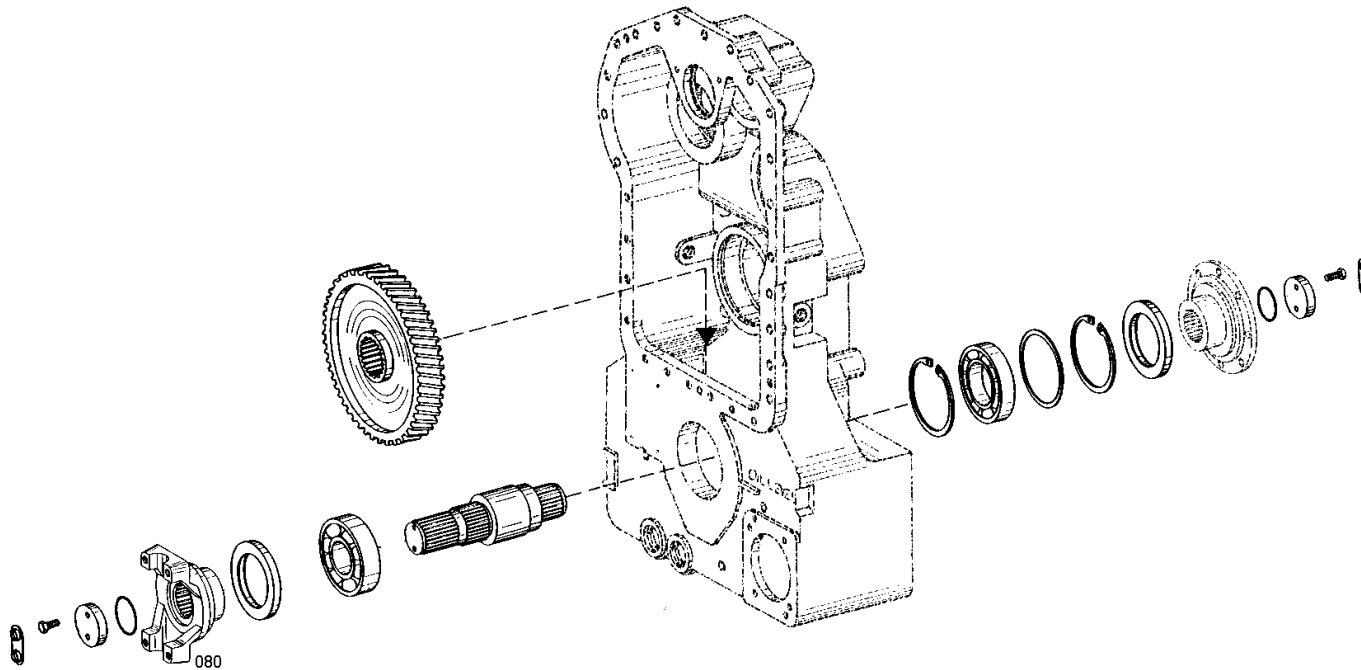
Material number: 4651.004.044

Plant: 465110301502

Material-assembly-group-no: 4651.103.404



4 WG 100(500) /
OUTPUT



Plant

Page 1 from 1

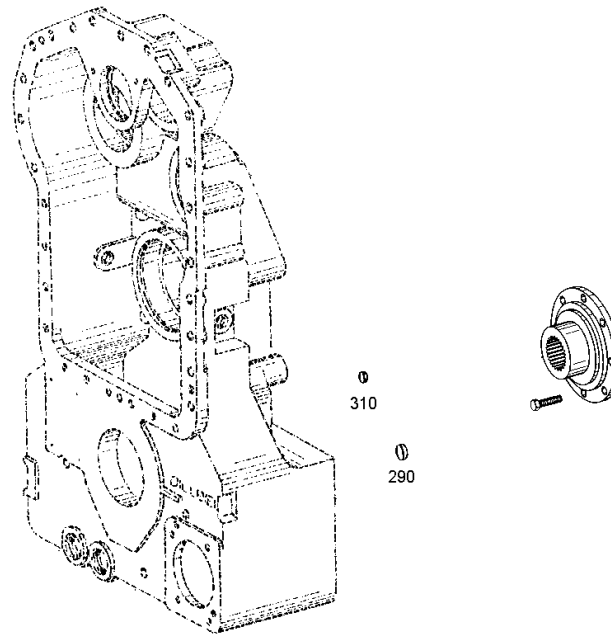
Material number: 4651.004.044

Plant: 465110900201

Material-assembly-group-no: 4651.109.003



4 WG 100(500) /
PARKING BRAKE



Plant

Page 1 from 1

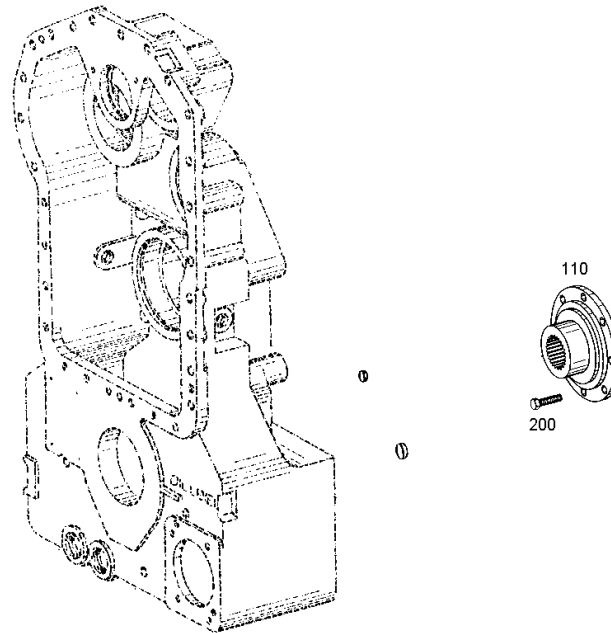
Material number: 4651.004.044

Plant: 465110900202

Material-assembly-group-no: 4651.109.405



4 WG 100(500) /
PARKING BRAKE



Plant

Page 1 from 1

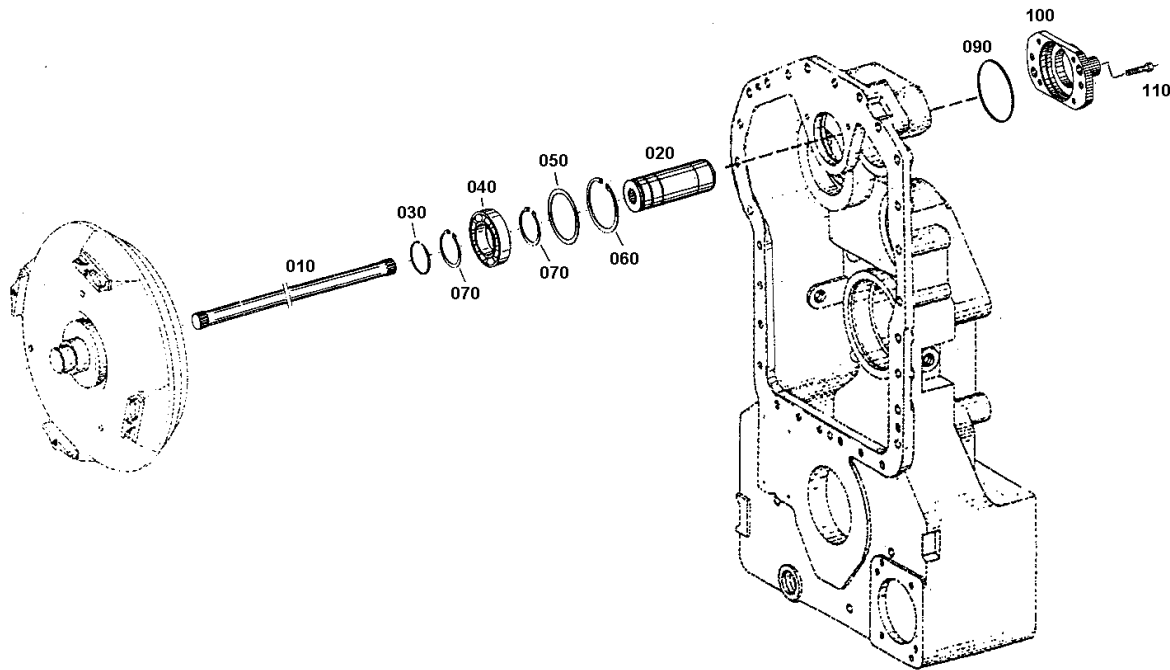
Material number: 4651.004.044

Plant: 465115400700

Material-assembly-group-no: 4651.154.004



4 WG 100(500) /
POWER TAKE-OFF



Plant

Page 1 from 1

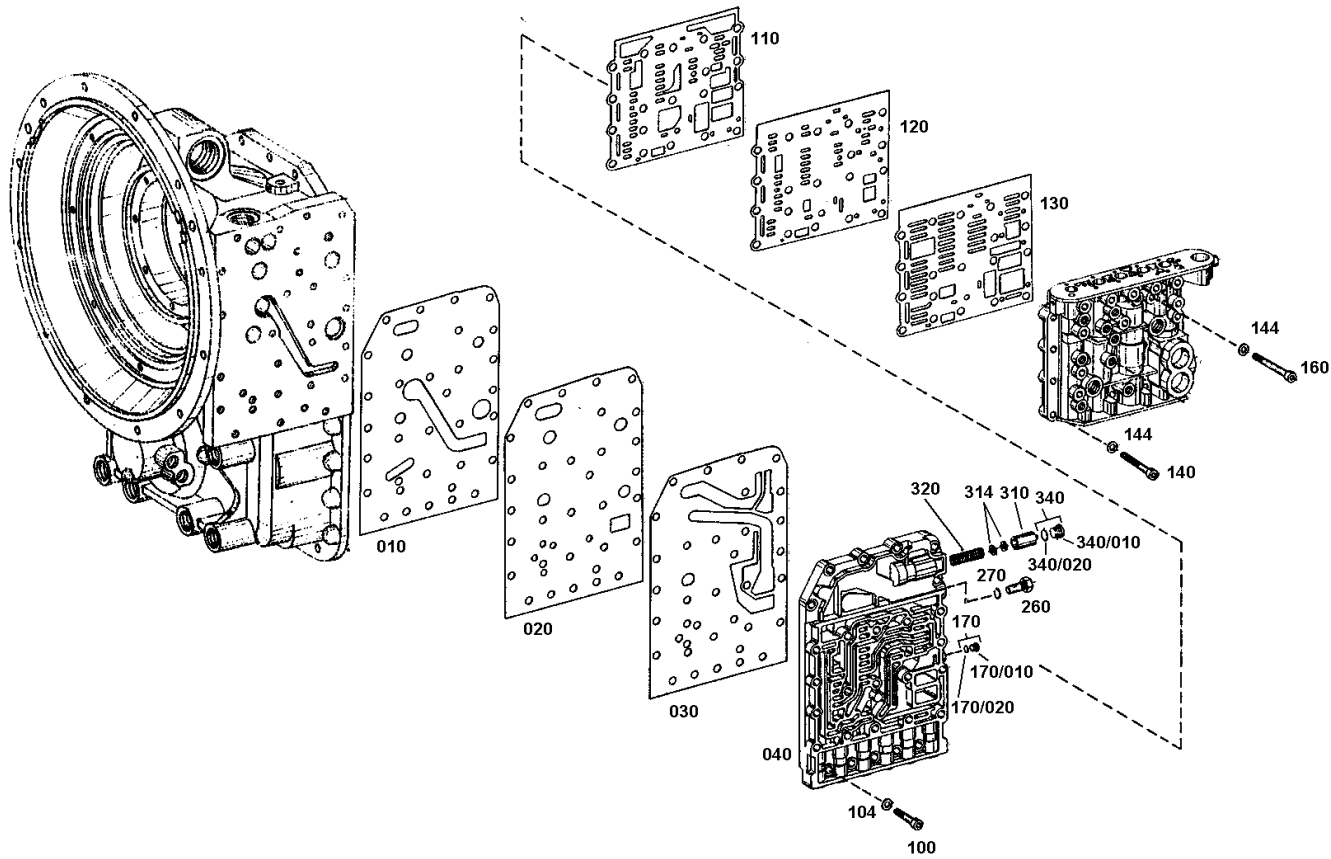
Material number: 4651.004.044

Plant: 465110601600

Material-assembly-group-no: 4651.106.023



4 WG 100(500) /
SHIFT SYSTEM



Plant

Page 1 from 1

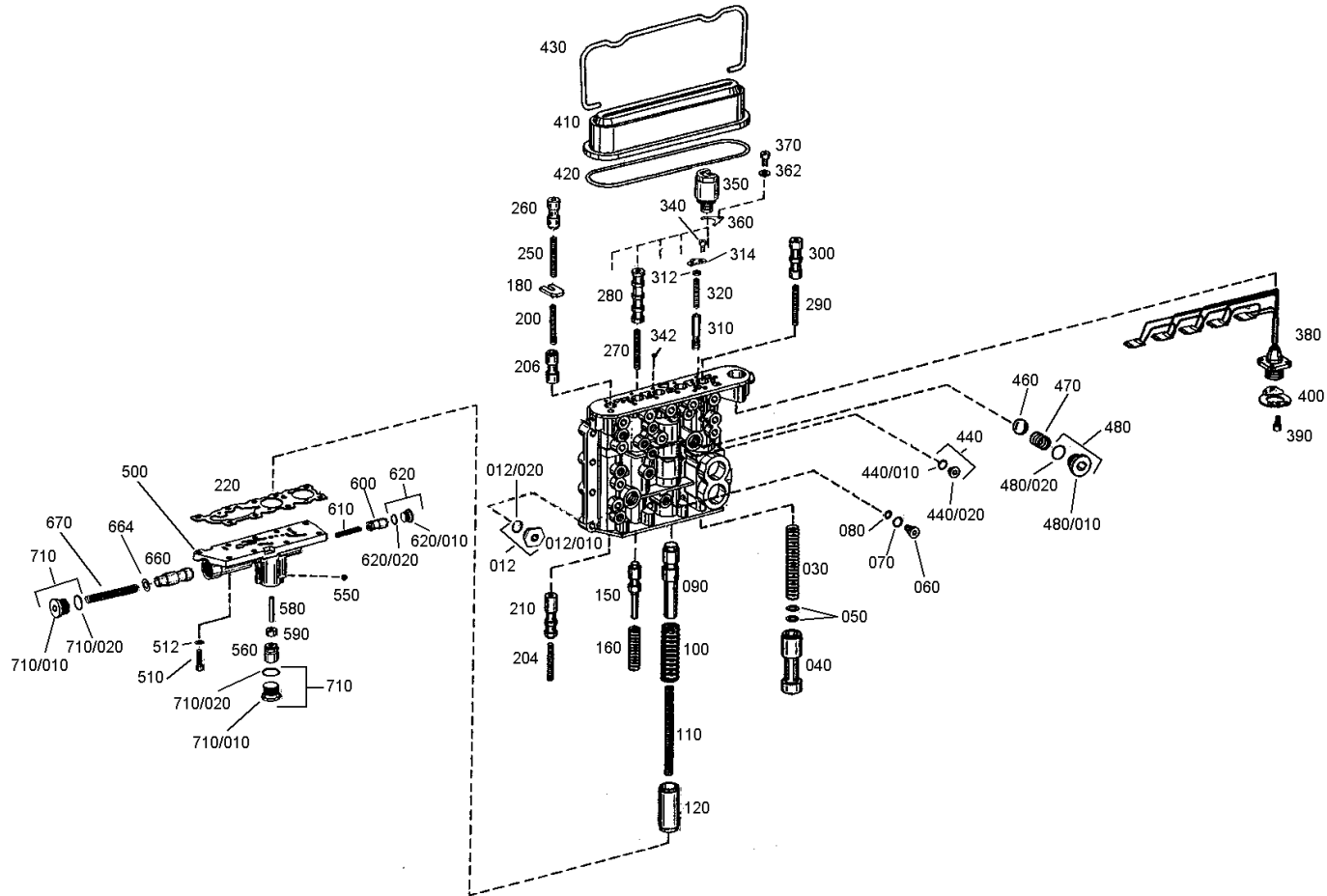
Material number: 4651.004.044

Plant: 464415903700

Material-assembly-group-no: 4644.159.301



4 WG 100(500) /
SHIFT SYSTEM



Plant

Page 1 from 1

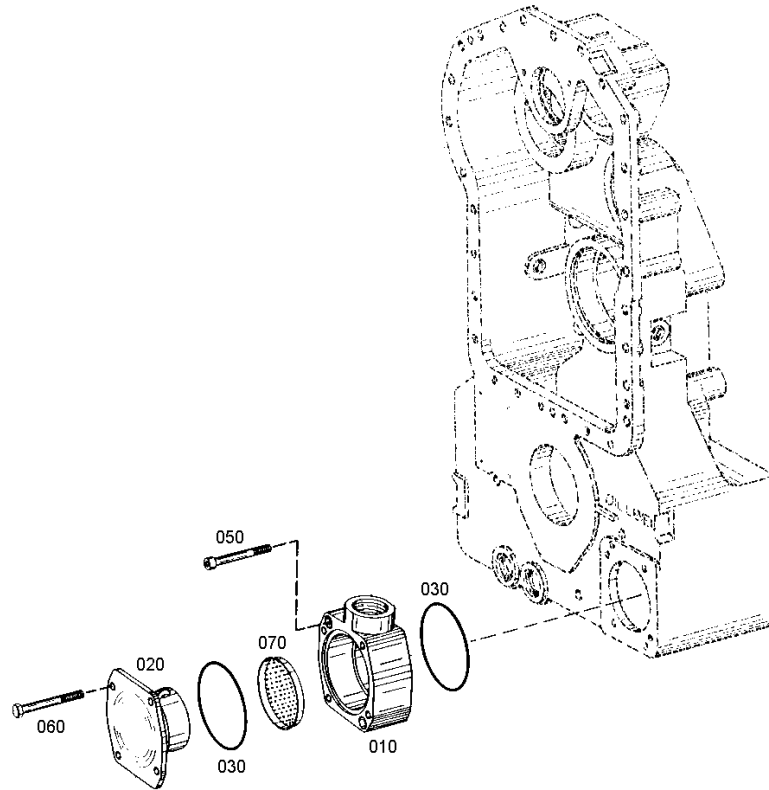
Material number: 4651.004.044

Plant: 465113800100

Material-assembly-group-no: 4651.138.001



4 WG 100(500) /
FILTER



Plant

Page 1 from 1

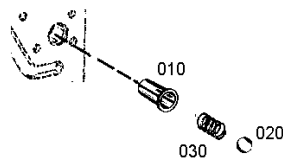
Material number: 4651.004.044

Plant: 465112000200

Material-assembly-group-no: 4651.120.001



4 WG 100(500) /
PRESSURE REGULATOR



Plant

Page 1 from 1

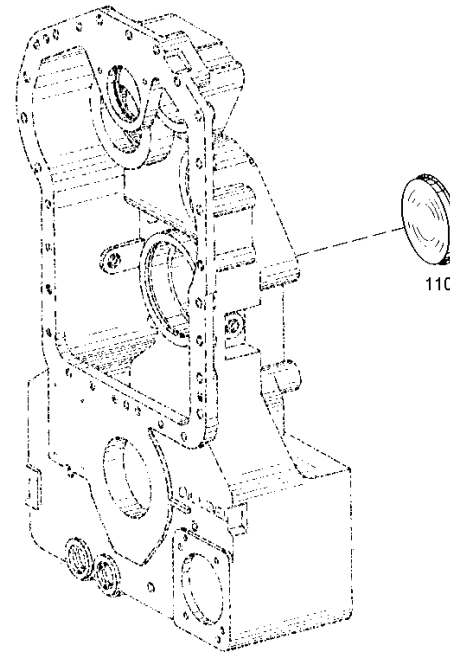
Material number: 4651.004.044

Plant: 465113700100

Material-assembly-group-no: 4651.137.001



4 WG 100(500) /
EMERGENCY STEERING PUMP



Plant

Page 1 from 1

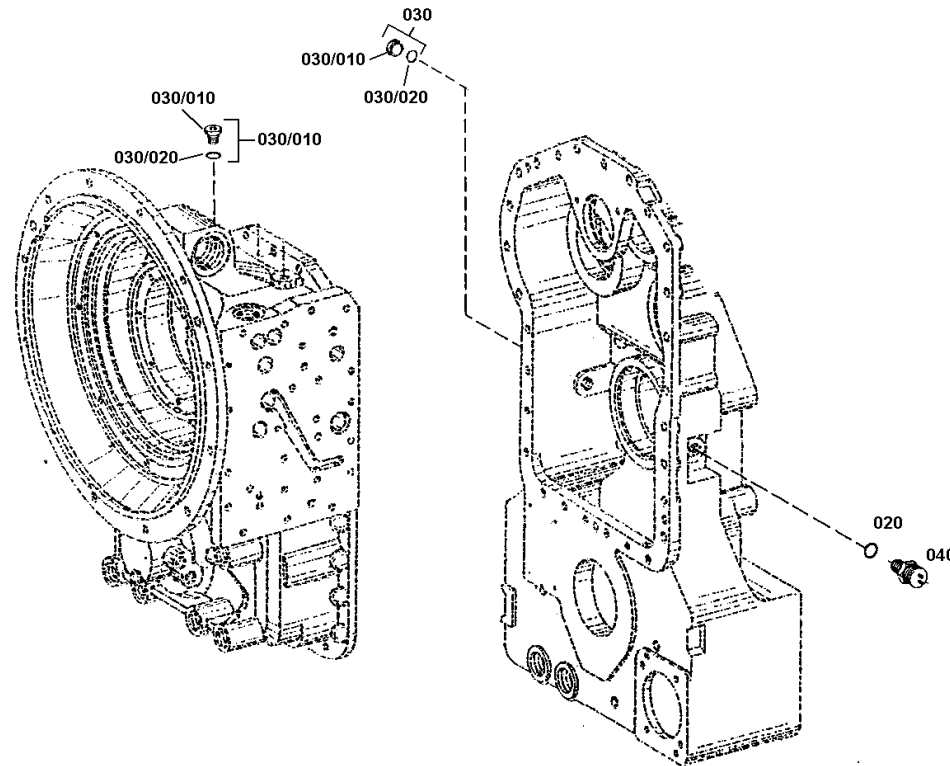
Material number: 4651.004.044

Plant: 465112500500

Material-assembly-group-no: 4651.125.005



4 WG 100(500) /
INDUCTIVE SENSOR



Plant

Page 1 from 1

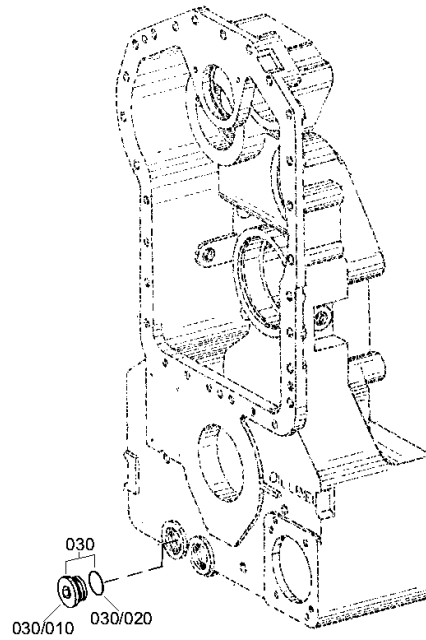
Material number: 4651.004.044

Plant: 465113100700

Material-assembly-group-no: 4651.131.007



4 WG 100(500) /
OIL DIPSTICK



Plant

Page 1 from 1

Material number: 4651.004.044

Plant: 465119902300

Material-assembly-group-no: 4651.199.024



4 WG 100(500) /
LOOSE PARTS

