



# Spare Parts Catalog

4 WG 160

Material number: 4656.054.137

Current date: 24.01.2023

ZF Friedrichshafen AG  
Hauptverwaltung  
80038 Friedrichshafen  
Deutschland

Telefon: +49 7541 77-0

Telefax: +49 7541 77-908000

[www.zf.com](http://www.zf.com)

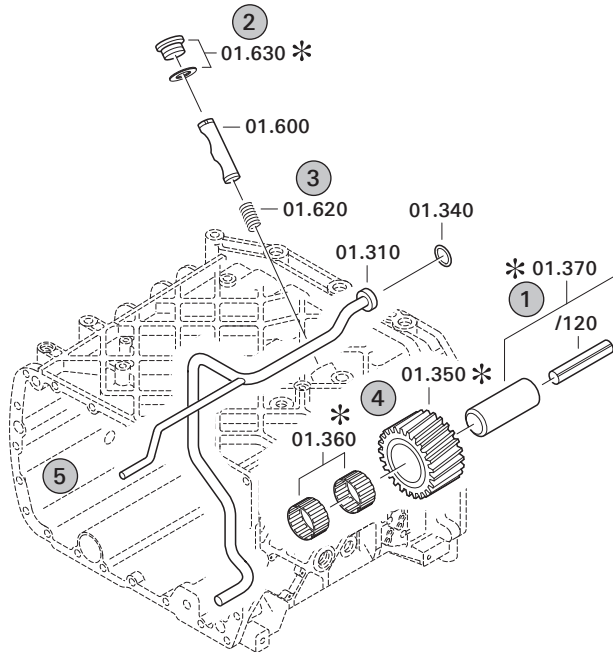
zuständiges Werk:  
Passau

# Notes relating to the spare parts catalog

## Setup of the spare parts catalog

- Cover sheet
- Technical Cover (only in SDM print)
- Overview of figures
- Figure
- Associated parts list
- Next figure
- Associated parts list
- ...

## Figure and parts list



## Overview of figures

Bildtafel Figure	Sachnummer Product number	Benennung (Description)	Technische Info Technical info	Description (Benennung)	Menge Quantity	Einheit Unit
068.08.17	1316.170.001	AUSLEGER	WL	SHIFT TURRET	1	Stk
068.08.06	1316.170.031	DECKEL	WL*H-H *VM	COVER	1	Stk
068.08.14	1316.170.808	DECKEL	WL*AUSL+GEH*H-H*HF160N	COVER	1	Stk
08	1316.170.441	ANSCHLUSSTEILE	WL*NG-VORB*RG-SCHL*168N *BAJONETT	CONNECTING PARTS	1	Stk

The "gap" indicates that there is no separate graphics panel (poster) for this assembly  
The parts of this assembly are shown with the same mid-section number on the figure

### 1 Positions and subpositions

Pos.	Sachnummer Product number	Benennung (Description)	Technische Info Technical info	Description (Benennung)	Menge Quantity	Einheit Unit
0370	1315.201.054	RUECKLAUFBOLZEN	KPL.16S151*SG*L= 79	REV.IDLER SHAFT	1	Stk
/0120	0631.329.293	SPANNSTIFT		SLOT. PIN	1	Stk

Positions marked with "/" are the individual items of a completion  
For example: Position 0370 contains a centering pin with the position /0120

### 2 Combinations with standardized parts

Pos.	Sachnummer Product number	Benennung (Description)	Technische Info Technical info	Description (Benennung)	Menge Quantity	Einheit Unit
0630		VERSCHL.SCHR.		SCREW PLUG	1	Stk
	0636.302.067	VERSCHL.SCHR.		SCREW PLUG	1	Stk
	0634.801.249	DICHTRING	A 26 X 31	SEALING RING	1	Stk

The parts list shows the components included in the combination of standardized parts

### 3 Depiction of position/item number on the figure and in the parts list

01.620 - on the figure      01 relates to the assembly in which the position is included. Due to program-related reasons, it is shown on the figure.

0620 - in the parts list

Pos.	Sachnummer Product number	Benennung (Description)	Technische Info Technical info	Description (Benennung)	Menge Quantity	Einheit Unit
0620	0732.040.736	DRUCKFEDER		COMPRESSION SPRING	1	Stk

### 4 \*-Positions

Positions marked with an \* are optional i.e. inclusion in the parts list is not mandatory.  
The following note is shown on the figure

je nach Stücklistenausführung  
depending on spec. number  
\*  
suivant la nomenclature  
secondo la distinta base

### 5 Parts, dotted display

Parts with dotted display on the figure are only used for orientation of other parts

# Technical Cover

Page 1 from 4

Material number: 4656.054.137



4 WG 160 /

Pos.	Information	Amendment number
	CUSTOMER: JCB	
	1.PERFORMANCE CALC.: 4656 707 247	
	VEHICLE DESIGNATION: 426ZX	
	WEIGHT EMPTY: 12,690 TO	
	ENGINE: CUMMINS QSB6.7	
	ENGINE POWER: 122,9 KW	
	SPEED: 2.000 U/MIN	
	INPUT TORQUE: 732 NM	
	SPEED: 1.400 U/MIN	
	TYRE SIZE: 20,5 R25 XHA	
	TYRE RADIUS DYN.: 0,703 M	
	AXLE RATIO: 21,530	
	MAX. SPEED: 42,0 KM/H	
	2.PERFORMANCE CALC.: 4657 707 248	
	VEHICLE APPLICATION: 426ZX	
	WEIGHT EMPTY: 13,370 TO	
	ENGINE: CUMMINS QSB6.7	
	ENGINE POWER: 122,9 KW	
	SPEED: 2.000 U/MIN	
	INPUT TORQUE: 732 NM	
	SPEED: 1.400 U/MIN	
	TIRES: 20,5 R25 X-MINE D2	
	TYRE RADIUS DYN.: 0,734 M	
	AXLE RATIO: 21,530	
	MAX. SPEED: 43,1 KM/H	
	3.PERFORMANCE CALC.: 4656 707 249	
	VEHICLE APPLICATION: 426ZX	
	WEIGHT EMPTY: 15,090 TO	
	ENGINE: CUMMINS QSB6.7	
	ENGINE POWER: 122,9 KW	
	SPEED: 2.000 U/MIN	
	INPUT TORQUE: 732 NM	
	SPEED: 1.400 U/MIN	

# Technical Cover

Page 2 from 4

Material number: 4656.054.137



4 WG 160 /

Pos.	Information	Amendment number
	TIRES: 20,5 R25 X-MINE D2 TIRE FILL	
	TYRE RADIUS DYN.: 0,734 M	
	AXLE RATIO: 21,530	
	MAX. SPEED: 42,2 KM/H	
	PRODUCT DESCRIPTION: ZF-ERGOPOWER TRANSMISSION	
	TRANSMISSION TYPE 4 WG 160	
	DROP CENTER DISTANCE: 500 MM	
	VEHICLE: WHEEL LOADER	
	1. GEAR FORWARD: 4,012	
	2. GEAR FORWARD: 2,024	
	3. GEAR FORWARD: 1,088	
	4. GEAR FORWARD: 0,619	
	1. GEAR REVERSE: 3,804	
	2. GEAR REVERSE: 1,919	
	3. GEAR REVERSE: 1,031	
	NUMBER OF PULSES ENGIN: 4	
	NUMBER OF PULSES TURB: 51	
	NUMBER OF PULSES MRK: 55	
	NUMBER OF PULSES OUTP.: 60	
	CONVERTER: W 300	
	CONVERTER PART NR.: 030 H 263	
	LOCK-UP CLUTCH: WITHOUT	
	STALL TORQUE RATIO: 2,30	
	TORQUE CONVERTER ABSORP 403 NM	
	STATOR FREEWHEEL: WITHOUT	
	ENGINE INPUT: DIRECT MOUNTED TO ENGINE	
	ENGINE: CUMMINS	
	ENGINE-CONNECTION: SAE-3 4656 500 072	
	OUTPUT: STANDARD	
	OUTPUT CONVERTER SIDE: WITHOUT AXLE DISCONNECT	
	OUTPUT FLANGE CONVERTER DS 1550	
	AXIAL DISPLACEABILITY: WITHOUT	
	OUTPUT PTO SIDE: WITHOUT PARKING BRAKE	

# Technical Cover

Page 3 from 4

Material number: 4656.054.137



4 WG 160 /

Pos.	Information	Amendment number
	OUTPUT FLANGE PTO SIDE: D 150 8 X M12 X 50	
	POWER TAKE OFF: 1 PTO COAXIAL ENGINE-DEPENDENT	
	1.PTO FLANGE: SAE C 2/4 HOLE	
	DRIVER / PROFILE: SAE C 12/24 DP 14 T	
	GEAR CHANGE CONTROL: ZF-ERGOSHIFT/ PROP VALVE	
	VOLTAGE: 24 VOLT	
	SPEED CONTROL: CONNECTION VIA EST	
	OIL LEVEL TUBE: WITHOUT	
	OIL DIPSTICK: WITHOUT	
	FILTER INSTALLATION: DIRECT MOUNTED	
	PRES. DROP SWITCH: CLOSING SWITCH	
	EMERGENCY STEERING PUMP WITHOUT	
	OIL TEMPERATURE SENSOR: WITH (VIA EST )	
	GEARBOX BREATHER: WITH	
	ERGO INCH: WITHOUT	
	ELECTRIC PARTS ORDER: INCLUDED IN SCOPE OF SUPPLY	
	SEPARATE ORDER: EST-37A SEE SCD 002000009151	
	GROUP LOOSE PARTS: 4656 183 015	
	CONTROL UNIT: EST 37A	
	GEAR SELECTOR: DW 3	
	2ND GEAR SELECTOR: WITHOUT	
	DISPLAY: WITHOUT	
	LOAD SENSOR: WITHOUT	
	WIRING: WITHOUT	
	OIL CAPACITY TRANSM.: CA. 21 LITRE	
	OIL FILLING TRANSM.: WITHOUT	
	OIL GRADE TRANSM.: TE- ML 03	
	PRIMER PAINT: BLACK RAL 9005	
	DOCUMENTATION GEAR BOX: -----	
	SECTION DRAWING: 4656 554 002	
	INSTALLATION DRAWING: 465.6654.137	
	GEARBOX DIAGRAM: 4656 700 034	
	OIL CIRCUIT DIAGRAM: 4656 700 080	

# Technical Cover

Page 4 from 4

Material number: 4656.054.137



4 WG 160 /

Pos.	Information	Amendment number
	INSTALL. INSTRUCTIONS: 0000 702 951	
	DOCU. CONTROL UNIT: -----	
	DRAWING 6009 665 002	
	DRAWING GEAR SEL. 1: 6006 630 034	
	CONNECTION DIAGRAM: 6006 700 581	
	CONNECTION DIAGRAM: 6029 702 034	

# Assembly group overview

Page 1 from 2



4 WG 160 /

Material number: 4656.054.137

Picture	Pos.	Material number	Name	Quantity	Amend. no.	Techn. Info.
465613003800	270	4656.130.038	ENGINE CONNECTION	1		
416603018400	500	4166.030.184	CONVERTER	1		
465610202300	30	4656.102.023	INPUT	1		
465610105501	10	4656.101.055	TRANSMISSION HOUSING	1		
465710140800	20	4657.101.408	TRANSMISSION HOUSING	1		
414313900100	15	4143.139.001	TYPE PLATE	1		
465617105000	350	4656.171.050	COUPLING	1		
465617203600	360	4656.172.036	COUPLING	1		
465617304500	370	4656.173.045	COUPLING	1		
465617403500	380	4656.174.035	COUPLING	1		
465617504800	390	4656.175.048	CLUTCH	1		
465617605800	400	4656.176.058	CLUTCH	1		
465610300700	50	4656.103.007	OUTPUT	1		
465610340700	60	4656.103.407	OUTPUT	1		
465610342000	70	4656.103.420	OUTPUT	1		
465615401400	340	4656.154.014	POWER TAKE-OFF	1		

# Assembly group overview

Page 2 from 2

Material number: 4656.054.137



4 WG 160 /

Picture	Pos.	Material number	Name	Quantity	Amend. no.	Techn. Info.
465610601300	110	4656.106.013	SHIFT SYSTEM	1		
465710640720	115	4657.106.407	SHIFT SYSTEM	1		
465615901921	120	4656.159.019	SHIFT SYSTEM	1		
465612000300	190	4656.120.003	PRESSURE REGULATOR	1		
465612200500	220	4656.122.005	PRESSURE OIL PUMP	1		
465613700400	310	4656.137.004	EMERGENCY STEERING PUMP	1		
465612500600	250	4656.125.006	INDUCTIVE SENSOR	1		
465712400200	240	4657.124.002	TEMPERATURE SENSOR	1		
465613801800	330	4656.138.018	FILTER	1		
465713101700	290	4657.131.017	FILLER NOZZLE	1		
465619902800	490	4656.199.028	LOOSE PARTS	1		
465618301500	495	4656.183.015	LOOSE PARTS	1		



# Picture

Page 1 from 1

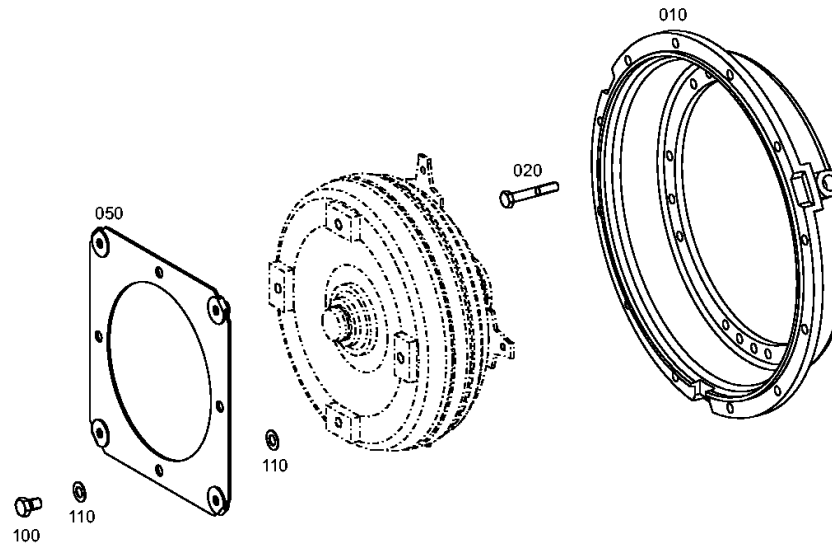
Material number: 4656.054.137

Picture: 465613003800

Material-assembly-group-no: 4656.130.038



4 WG 160 /  
ENGINE CONNECTION



# Picture

Page 1 from 1

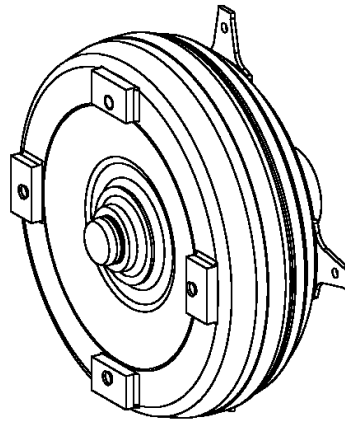
Material number: 4656.054.137

Picture: 416603018400

Material-assembly-group-no: 4166.030.184



4 WG 160 /  
CONVERTER



010

# Picture

Page 1 from 1

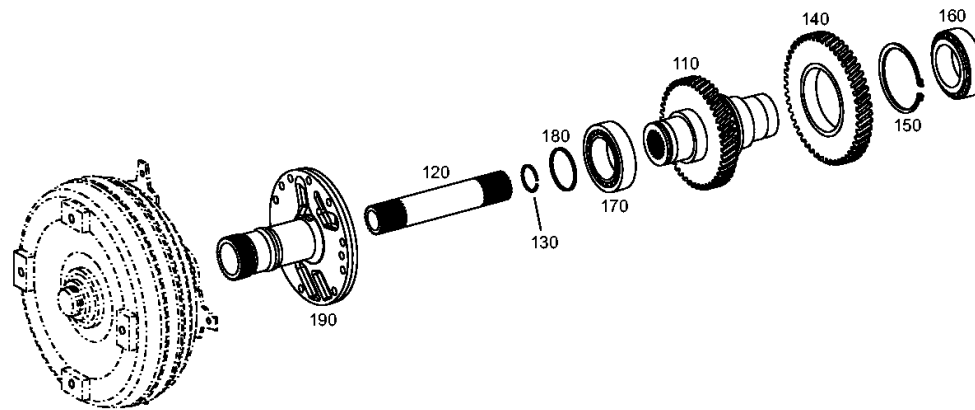
Material number: 4656.054.137

Picture: 465610202300

Material-assembly-group-no: 4656.102.023



4 WG 160 /  
INPUT



# Picture

Page 1 from 2

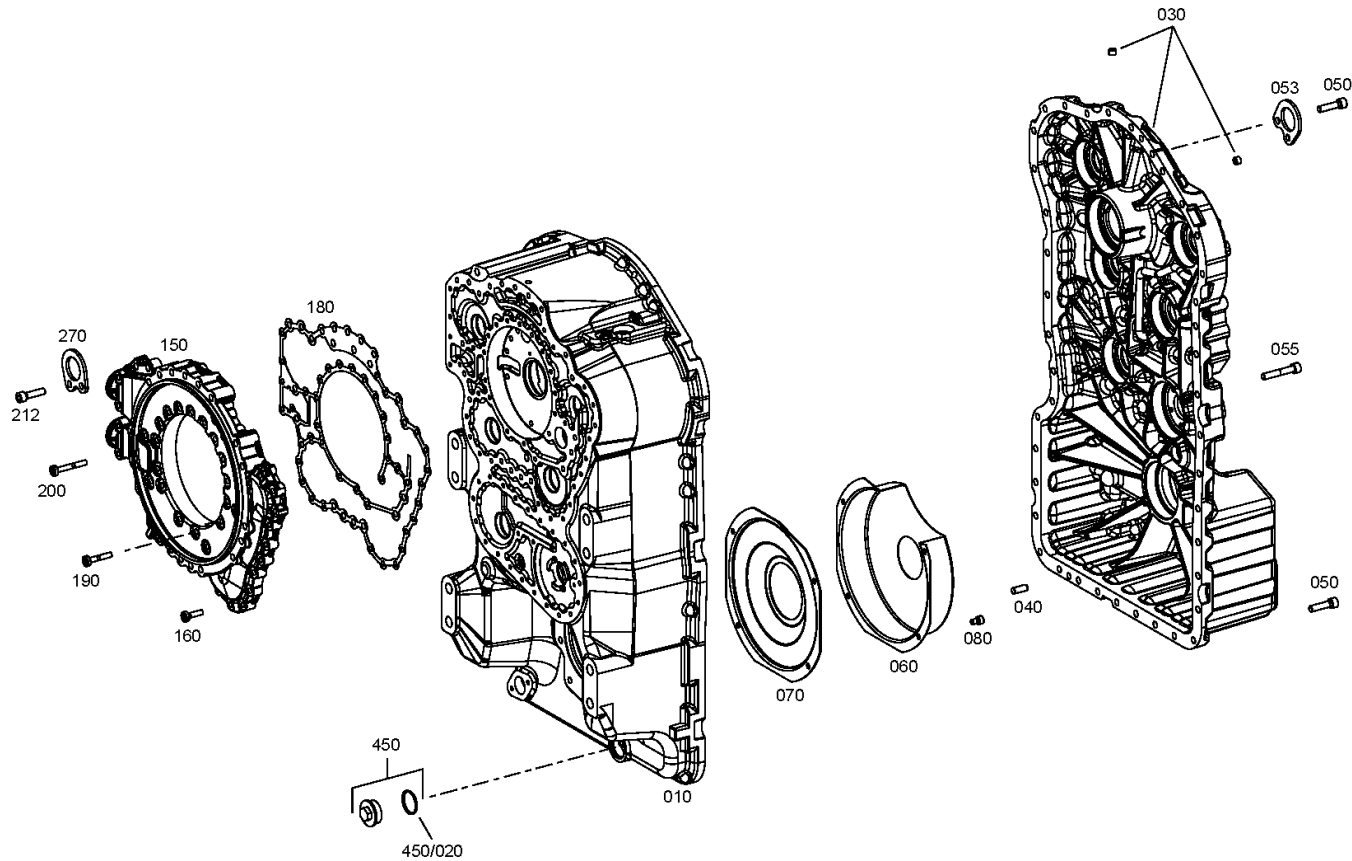
Material number: 4656.054.137

Picture: 465610105501

Material-assembly-group-no: 4656.101.055



4 WG 160 /  
TRANSMISSION HOUSING



# Picture

Page 2 from 2

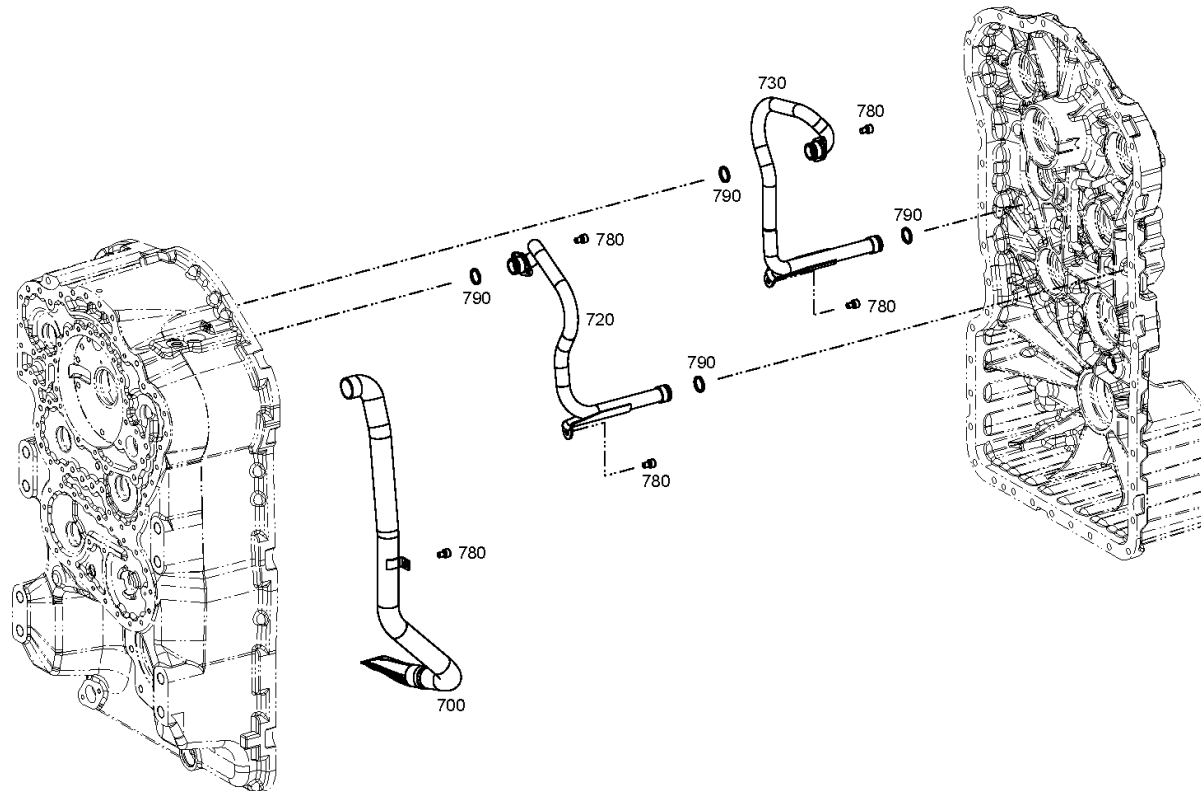
Material number: 4656.054.137

Picture: 465610105502

Material-assembly-group-no: 4656.101.055



4 WG 160 /  
TRANSMISSION HOUSING



# Picture

Page 1 from 1

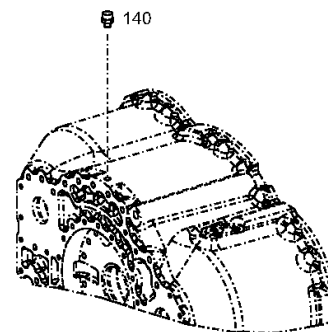
Material number: 4656.054.137

Picture: 465710140800

Material-assembly-group-no: 4657.101.408



4 WG 160 /  
TRANSMISSION HOUSING



# Picture

Page 1 from 1

Material number: 4656.054.137

Picture: 414313900100

Material-assembly-group-no: 4143.139.001



4 WG 160 /  
TYPE PLATE



010

# Picture

Page 1 from 1

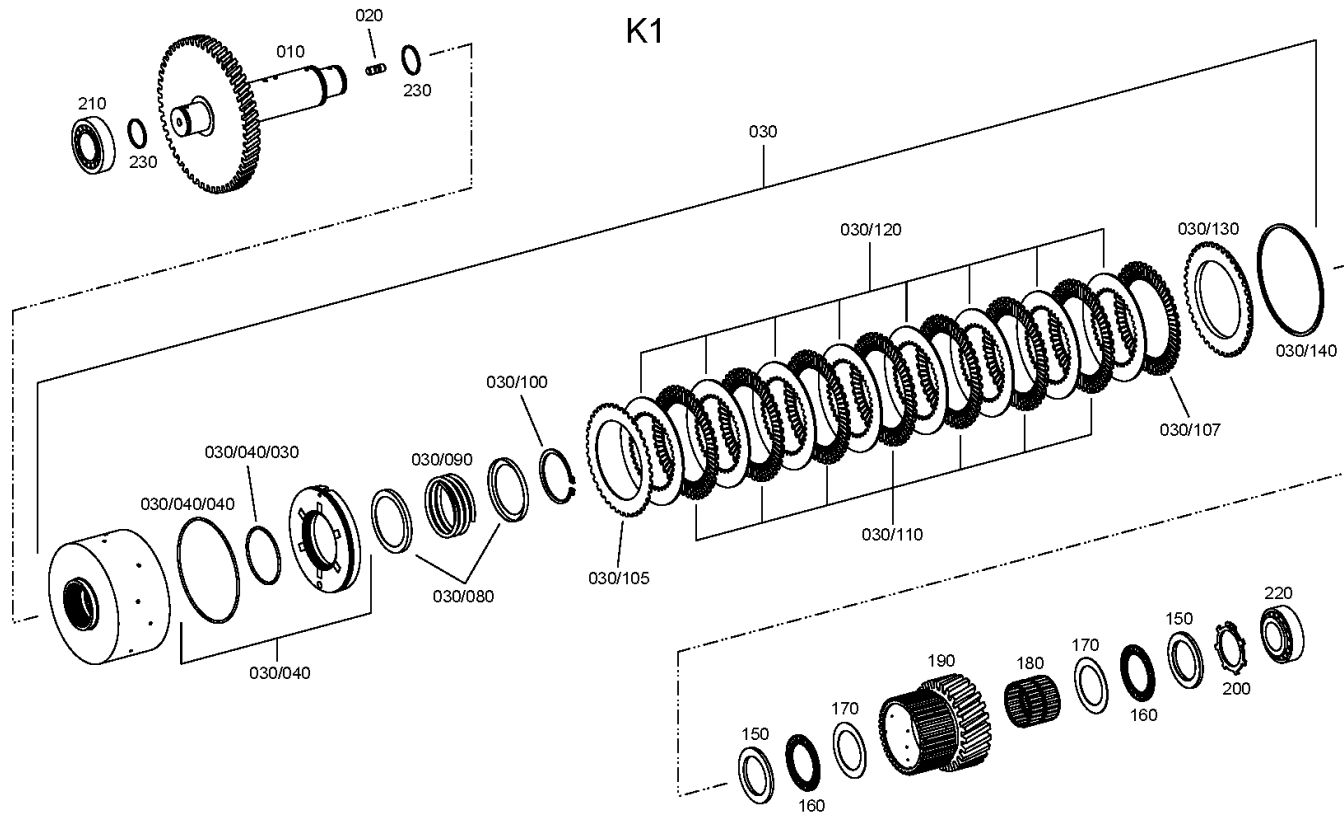
Material number: 4656.054.137

Picture: 465617105000

Material-assembly-group-no: 4656.171.050



4 WG 160 /  
COUPLING





# Picture

Page 1 from 1

Material number: 4656.054.137

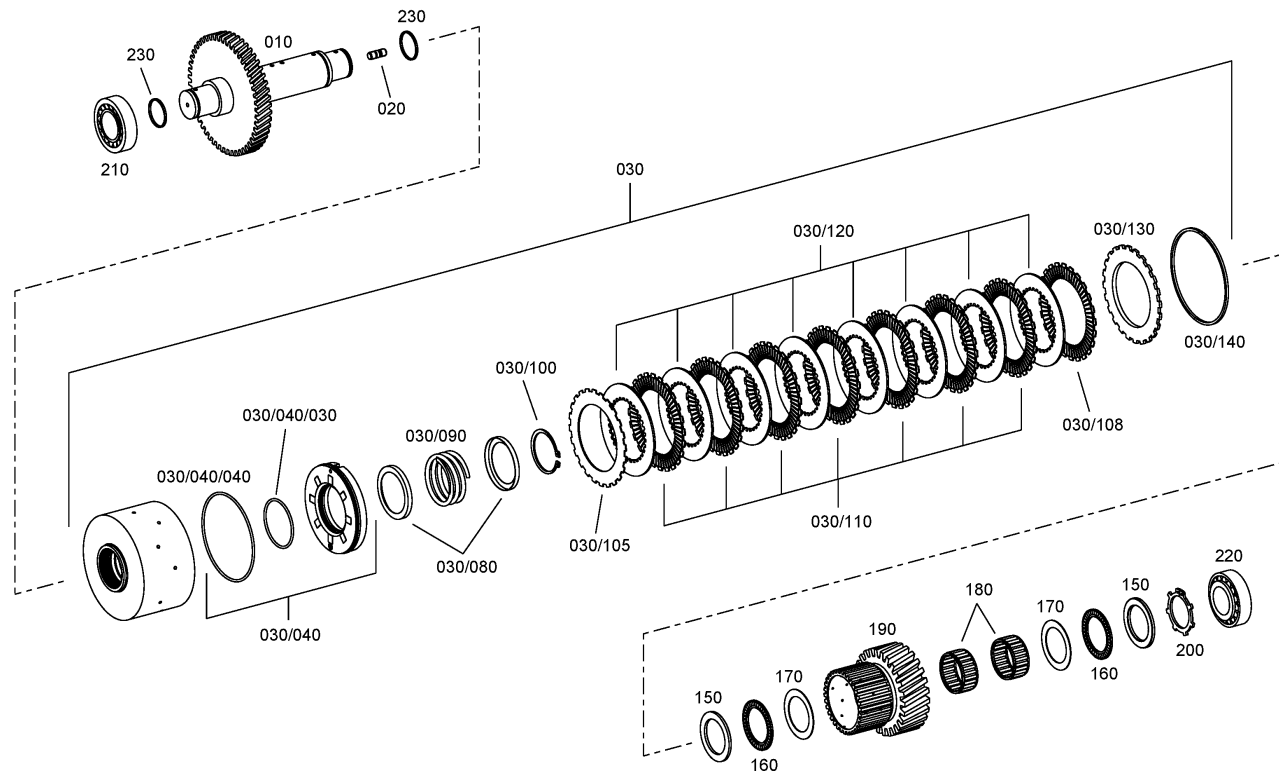
Picture: 465617203600

Material-assembly-group-no: 4656.172.036



4 WG 160 /  
COUPLING

K2



# Picture

Page 1 from 1

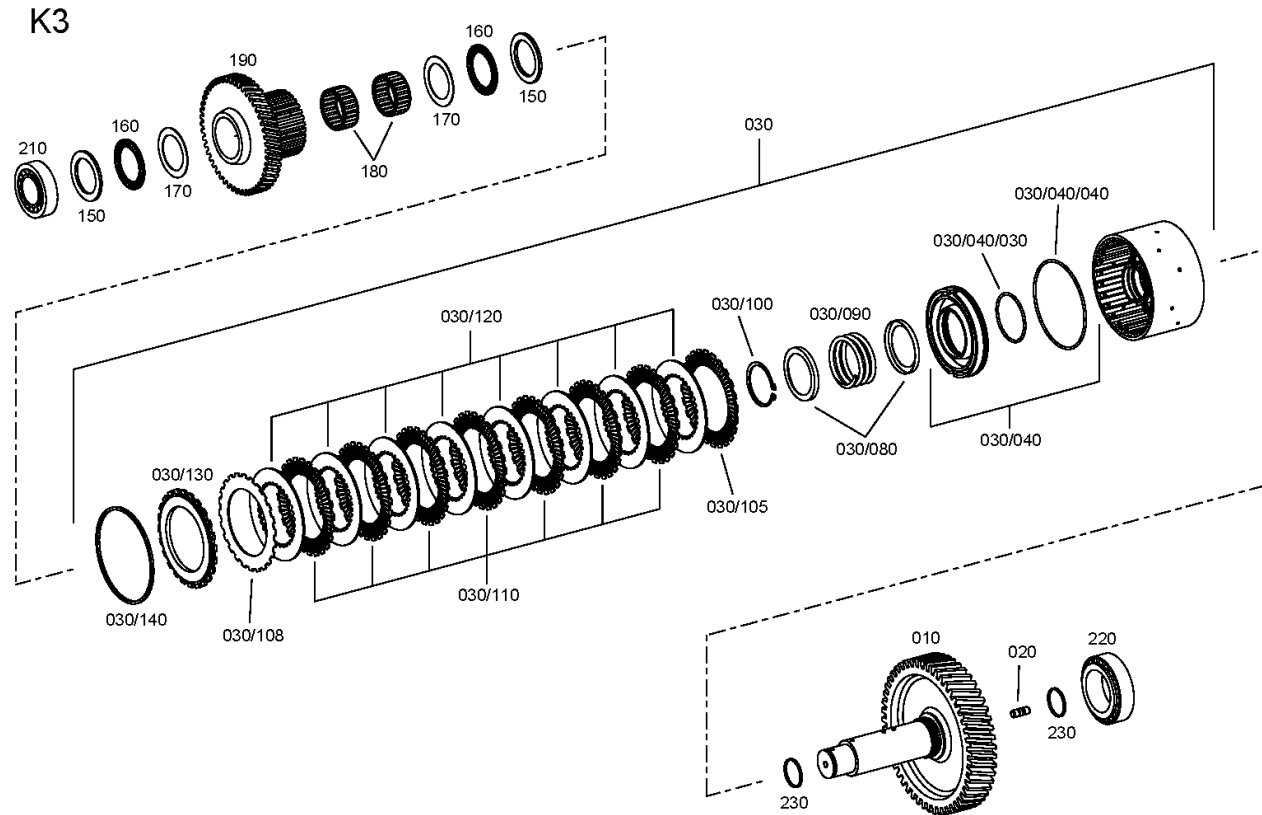
Material number: 4656.054.137

Picture: 465617304500

Material-assembly-group-no: 4656.173.045



4 WG 160 /  
COUPLING



# Picture

Page 1 from 1

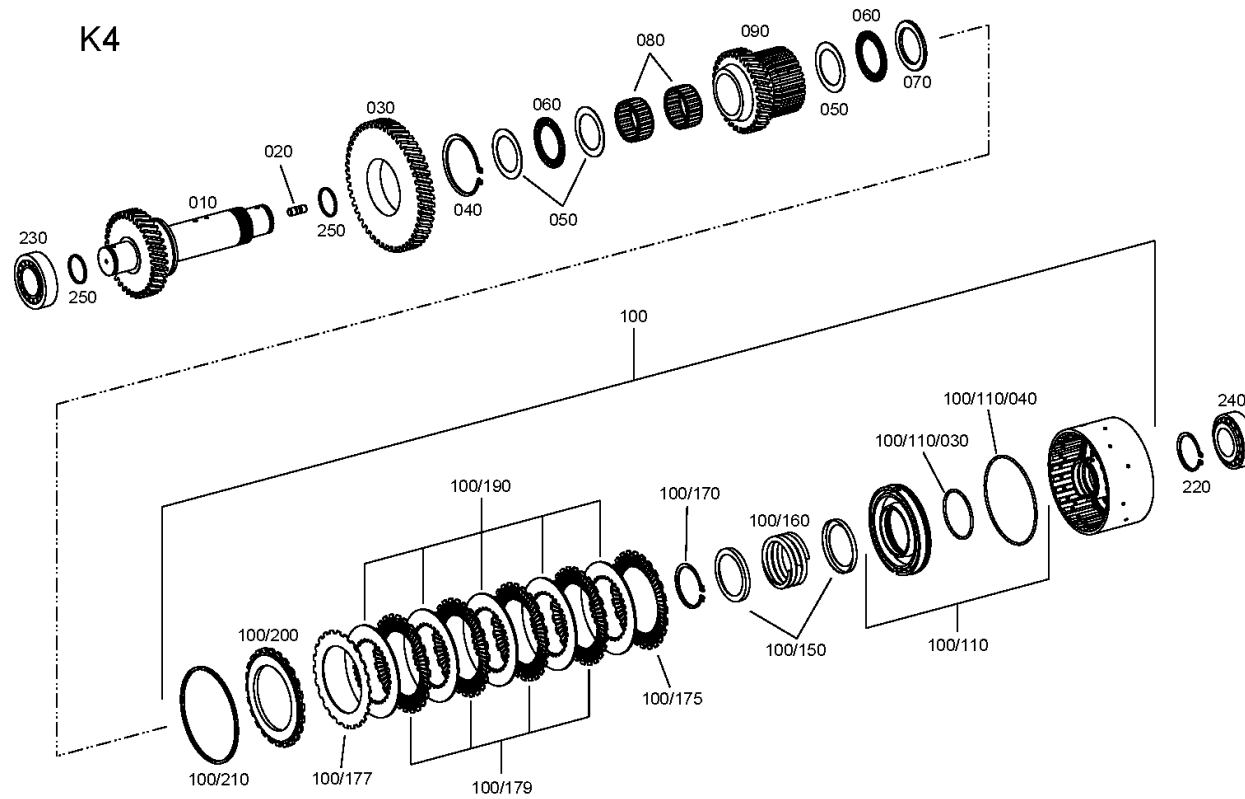
Material number: 4656.054.137

Picture: 465617403500

Material-assembly-group-no: 4656.174.035



4 WG 160 /  
COUPLING



# Picture

Page 1 from 1

Material number: 4656.054.137

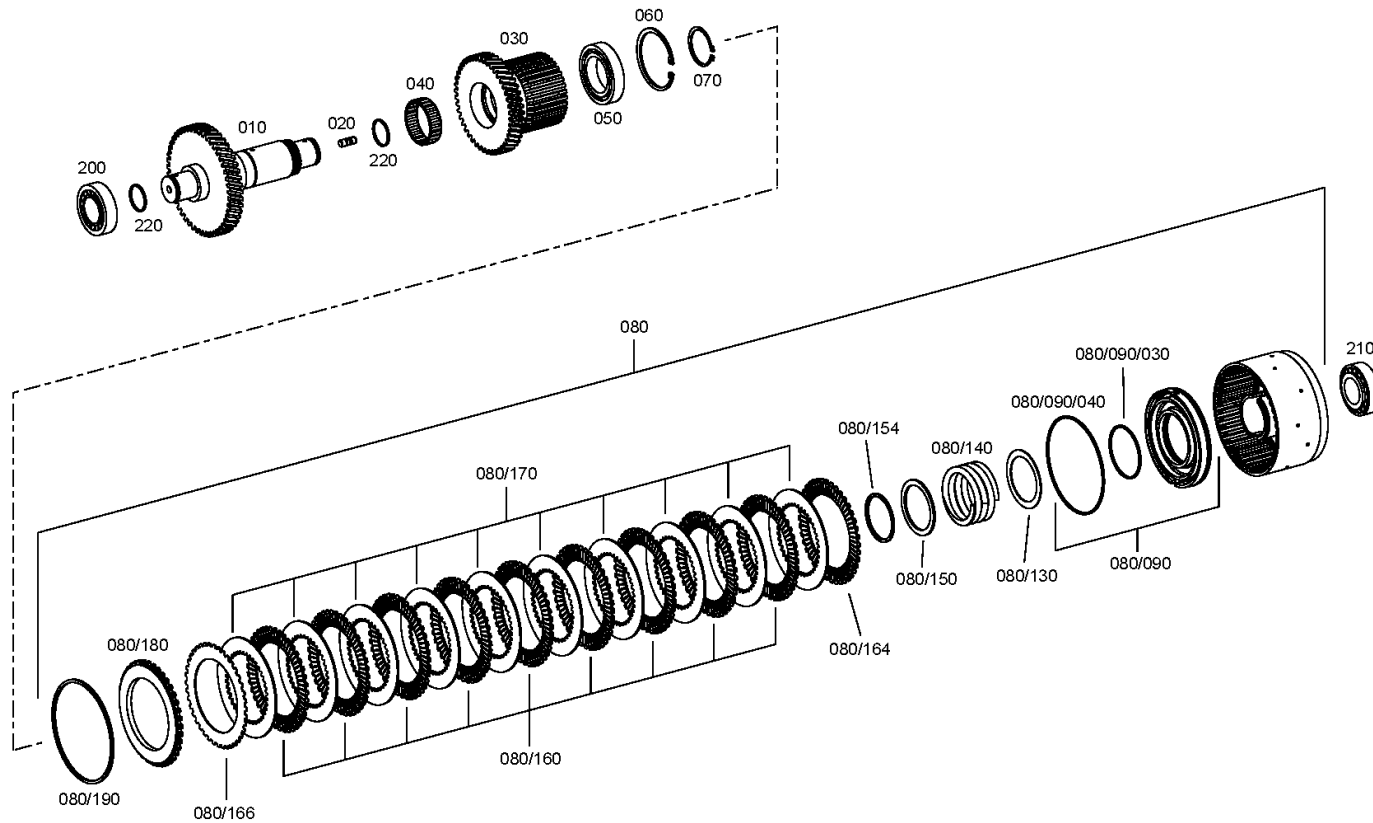
Picture: 465617504800

Material-assembly-group-no: 4656.175.048



4 WG 160 /  
CLUTCH

KV



# Picture

Page 1 from 1

Material number: 4656.054.137

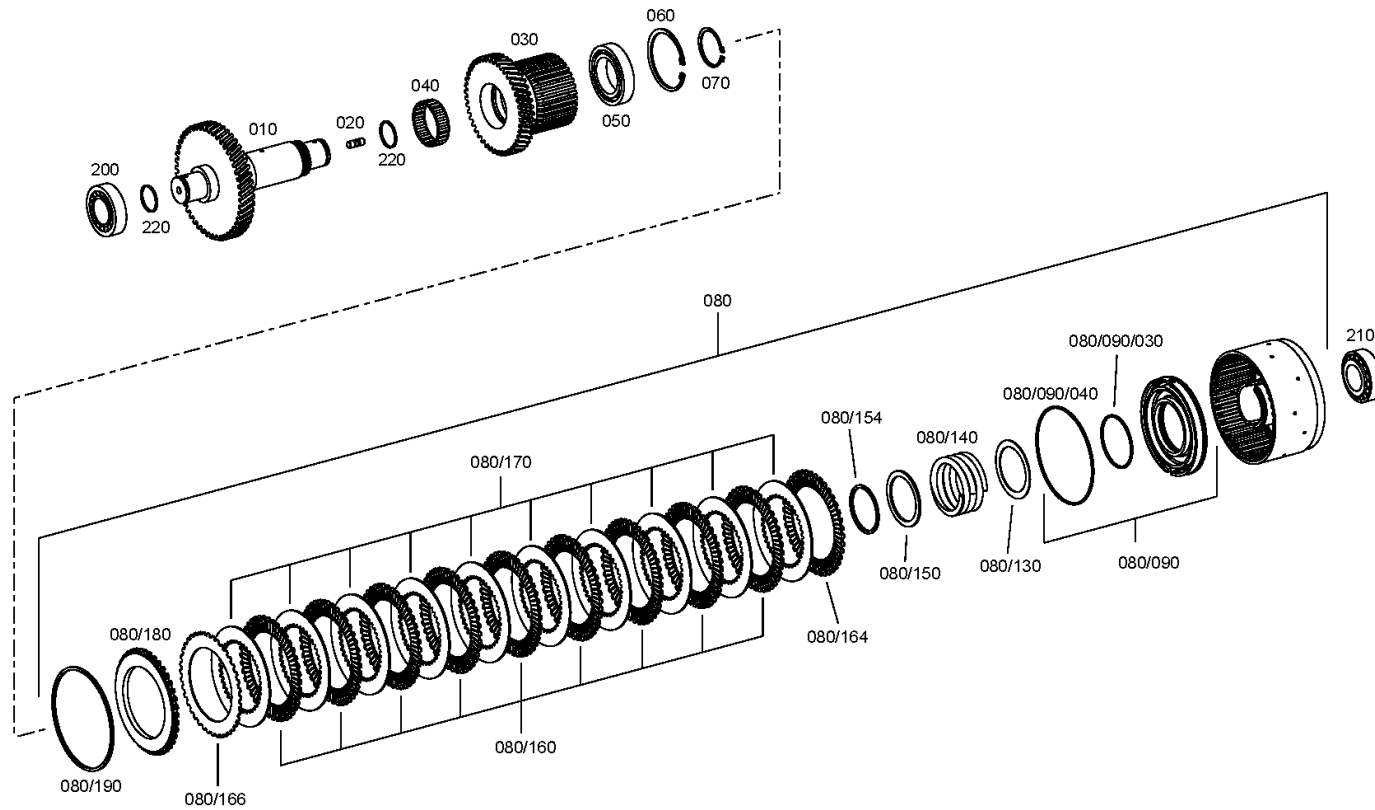
Picture: 465617605800

Material-assembly-group-no: 4656.176.058



4 WG 160 /  
CLUTCH

KR



# Picture

Page 1 from 1

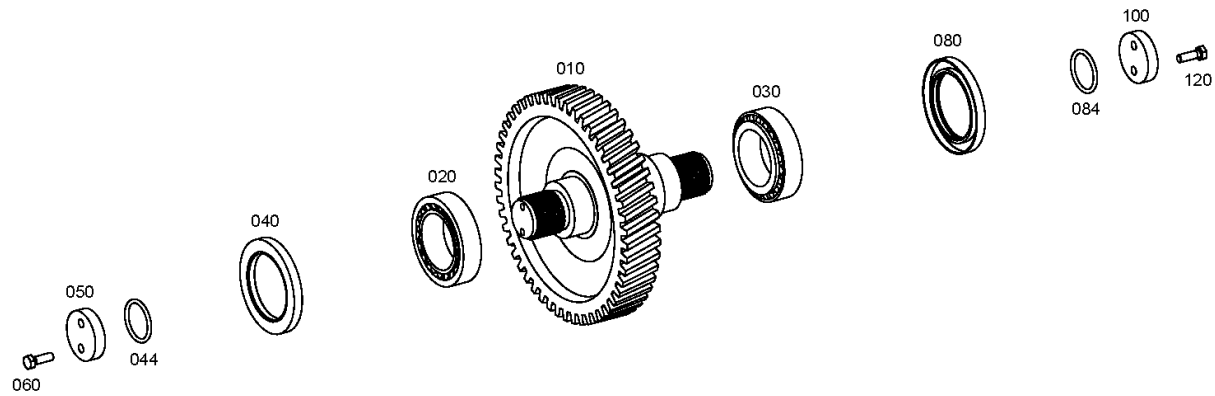
Material number: 4656.054.137

Picture: 465610300700

Material-assembly-group-no: 4656.103.007



4 WG 160 /  
OUTPUT



# Picture

Page 1 from 1

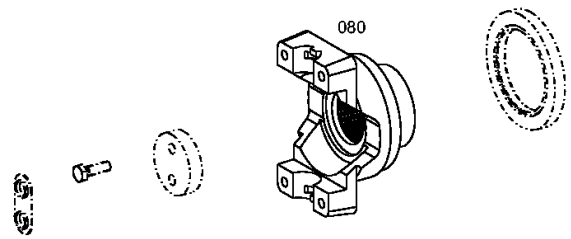
Material number: 4656.054.137

Picture: 465610340700

Material-assembly-group-no: 4656.103.407



4 WG 160 /  
OUTPUT



# Picture

Page 1 from 1

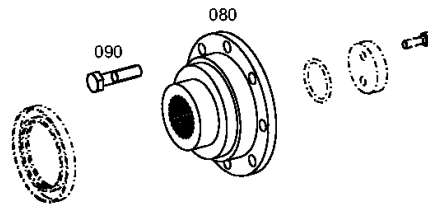
Material number: 4656.054.137

Picture: 465610342000

Material-assembly-group-no: 4656.103.420



4 WG 160 /  
OUTPUT





# Picture

Page 1 from 1

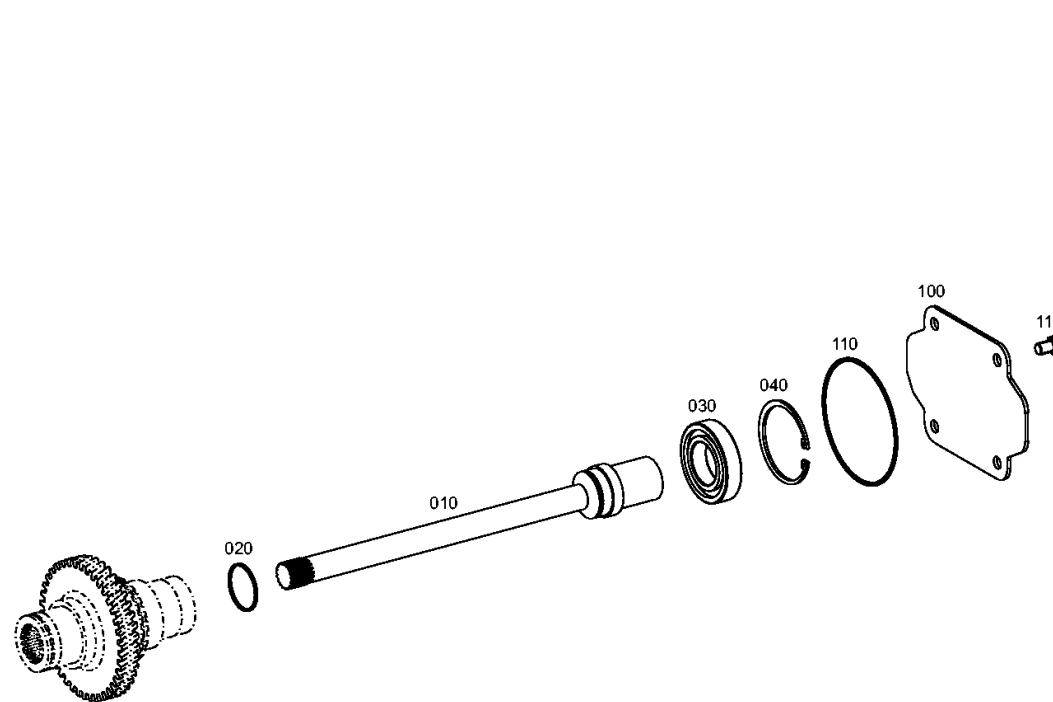
Material number: 4656.054.137

Picture: 465615401400

Material-assembly-group-no: 4656.154.014



4 WG 160 /  
POWER TAKE-OFF



# Picture

Page 1 from 1

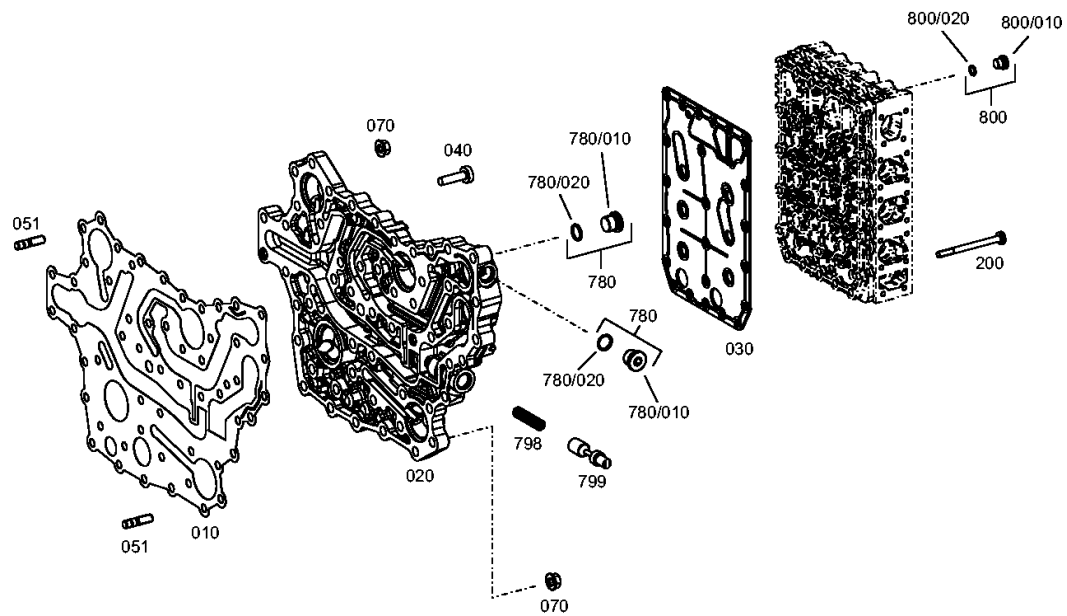
Material number: 4656.054.137

Picture: 465610601300

Material-assembly-group-no: 4656.106.013



4 WG 160 /  
SHIFT SYSTEM



# Picture

Page 1 from 1

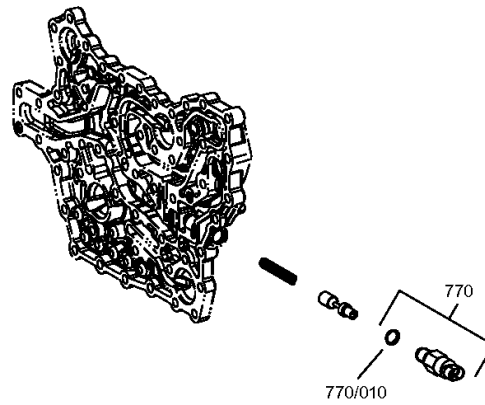
Material number: 4656.054.137

Picture: 465710640720

Material-assembly-group-no: 4657.106.407



4 WG 160 /  
SHIFT SYSTEM



# Picture

Page 1 from 2

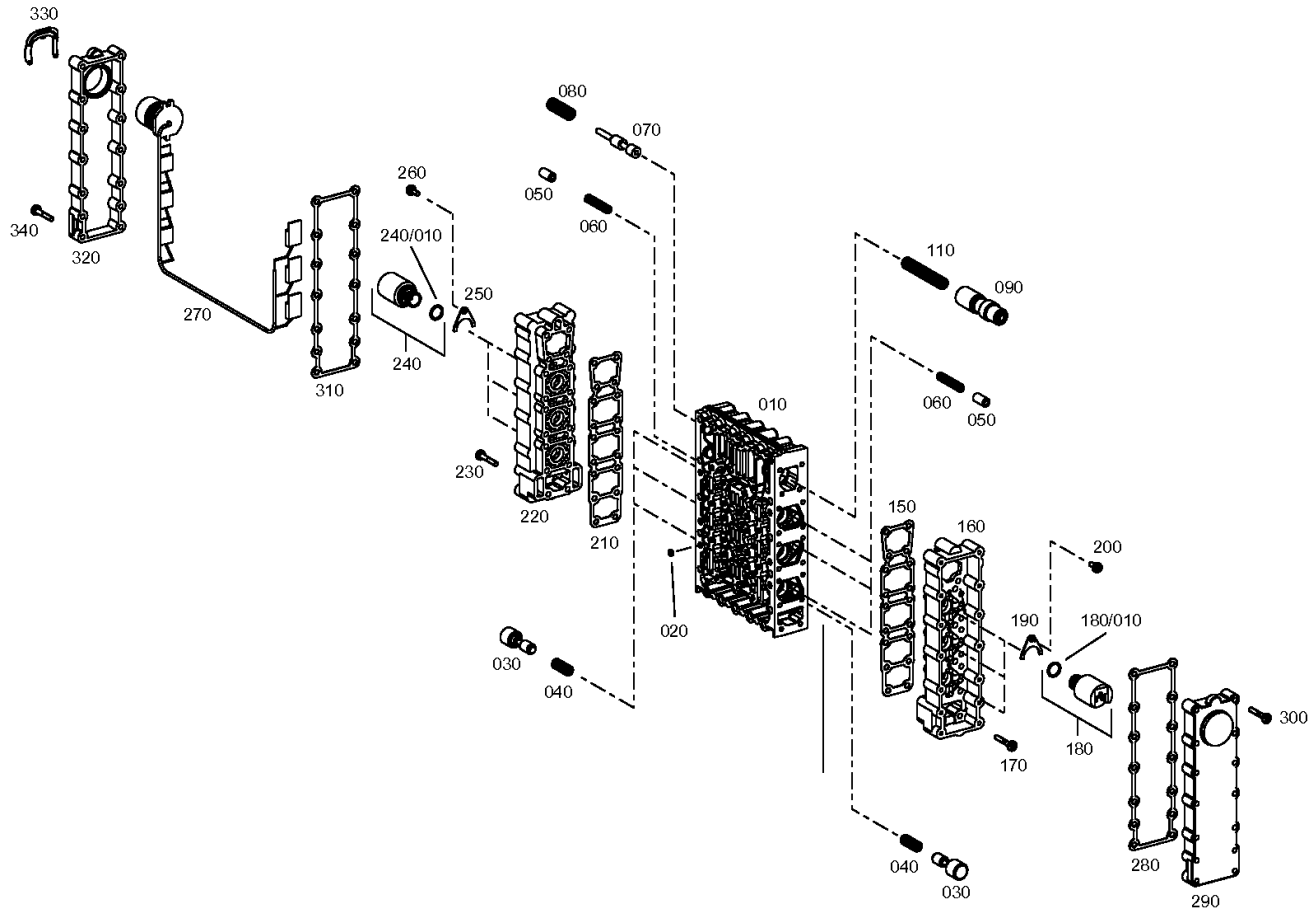
Material number: 4656.054.137

Picture: 465615901921

Material-assembly-group-no: 4656.159.019



4 WG 160 /  
SHIFT SYSTEM



# Picture

Page 2 from 2

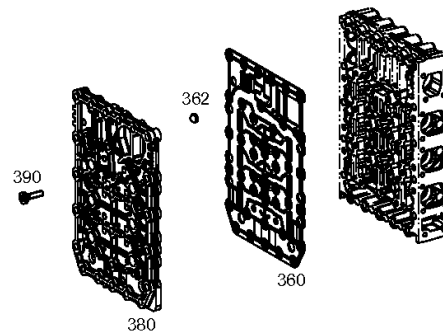
Material number: 4656.054.137

Picture: 465615901922

Material-assembly-group-no: 4656.159.019



4 WG 160 /  
SHIFT SYSTEM



# Picture

Page 1 from 1

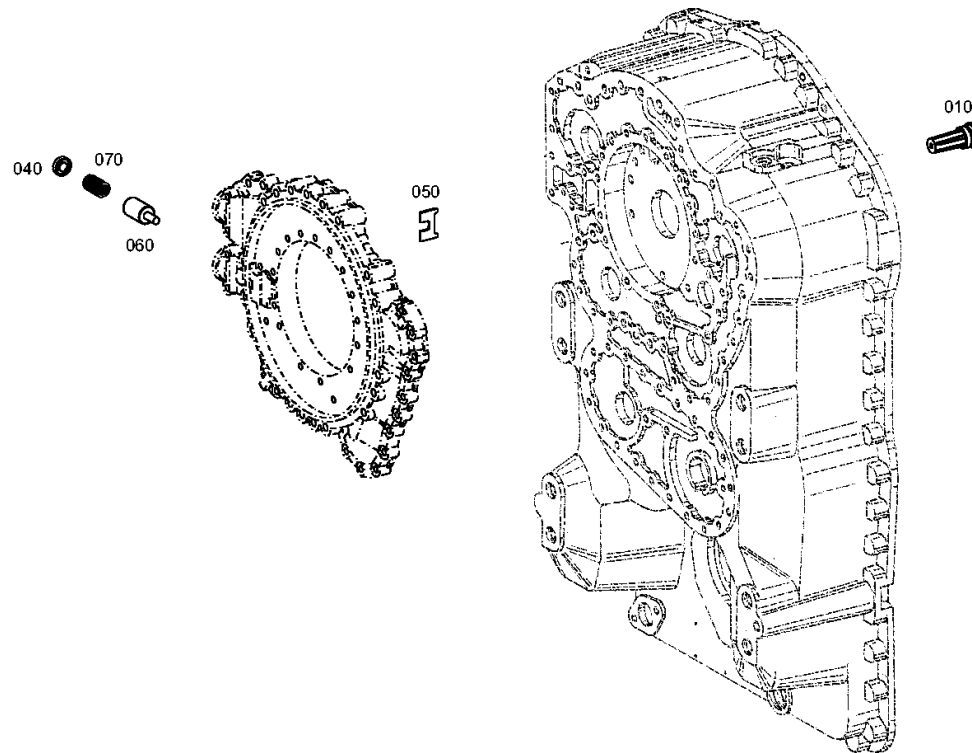
Material number: 4656.054.137

Picture: 465612000300

Material-assembly-group-no: 4656.120.003



4 WG 160 /  
PRESSURE REGULATOR



# Picture

Page 1 from 1

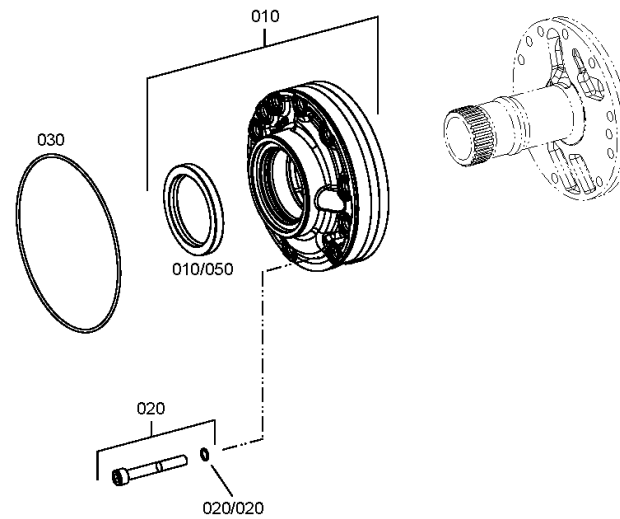
Material number: 4656.054.137

Picture: 465612200500

Material-assembly-group-no: 4656.122.005



4 WG 160 /  
PRESSURE OIL PUMP



# Picture

Page 1 from 1

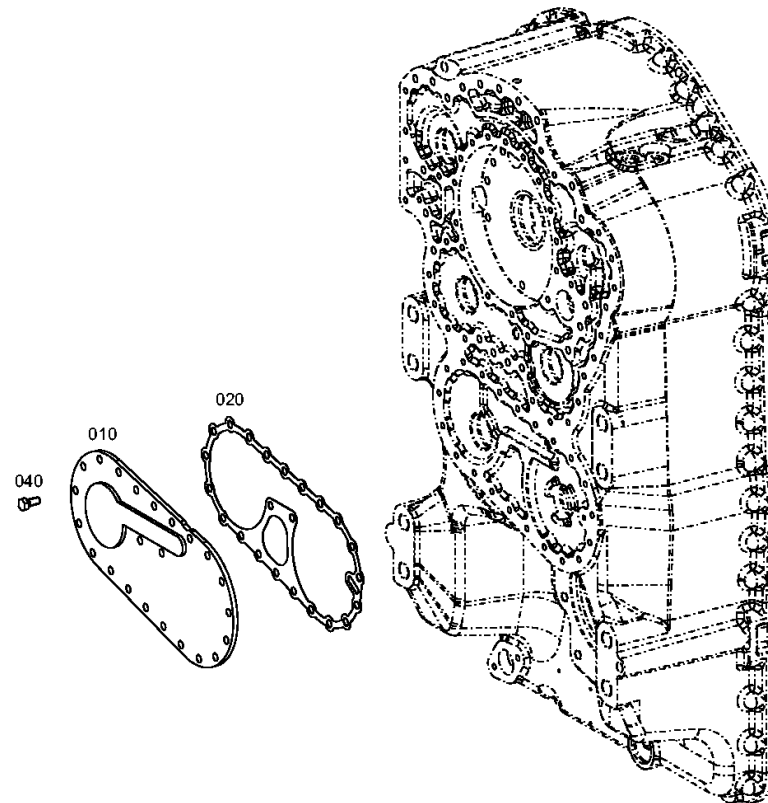
Material number: 4656.054.137

Picture: 465613700400

Material-assembly-group-no: 4656.137.004



4 WG 160 /  
EMERGENCY STEERING PUMP





# Picture

Page 1 from 1

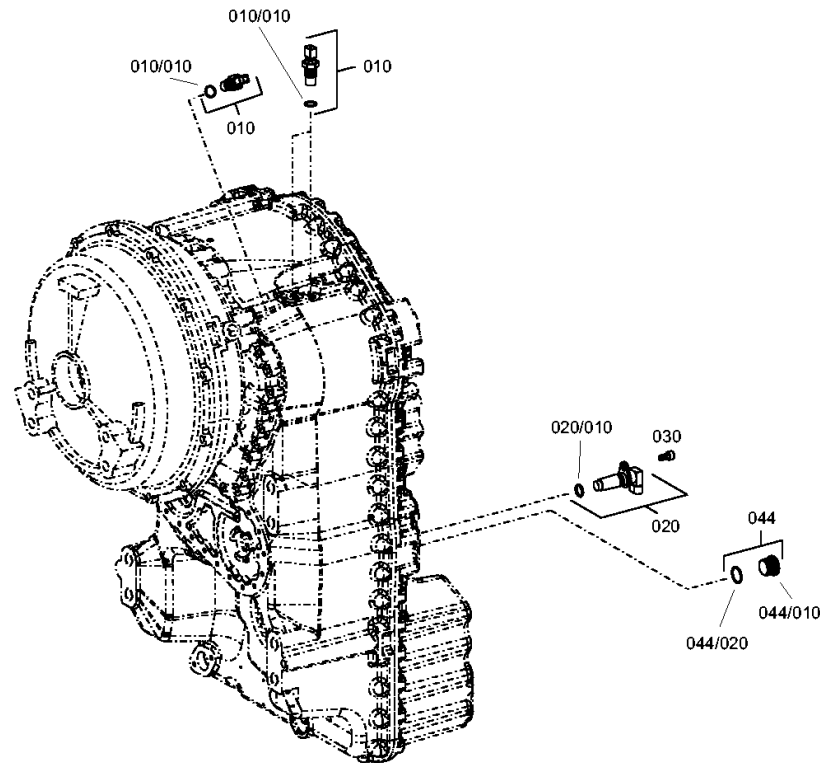
Material number: 4656.054.137

Picture: 465612500600

Material-assembly-group-no: 4656.125.006



4 WG 160 /  
INDUCTIVE SENSOR



# Picture

Page 1 from 1

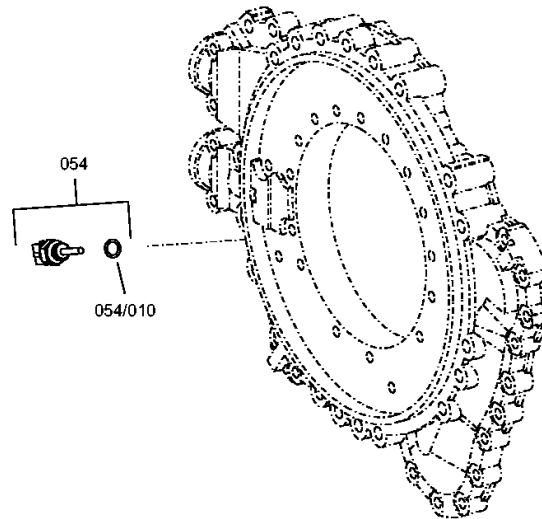
Material number: 4656.054.137

Picture: 465712400200

Material-assembly-group-no: 4657.124.002



4 WG 160 /  
TEMPERATURE SENSOR



# Picture

Page 1 from 1

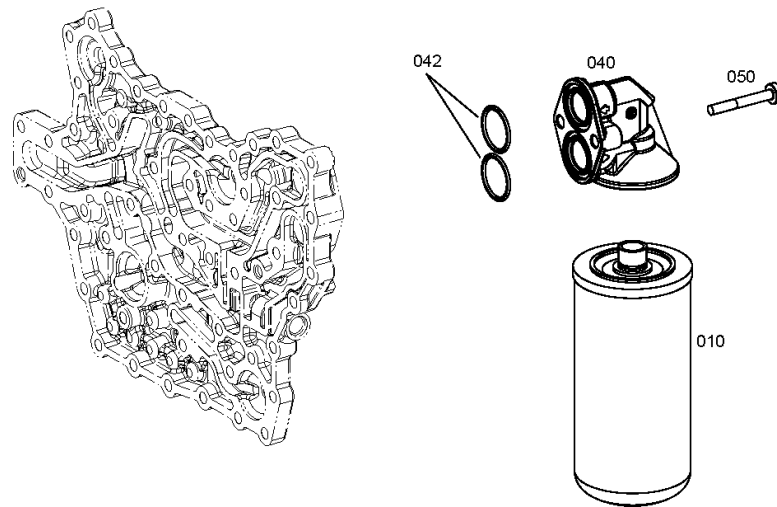
Material number: 4656.054.137

Picture: 465613801800

Material-assembly-group-no: 4656.138.018



4 WG 160 /  
FILTER



# Picture

Page 1 from 1

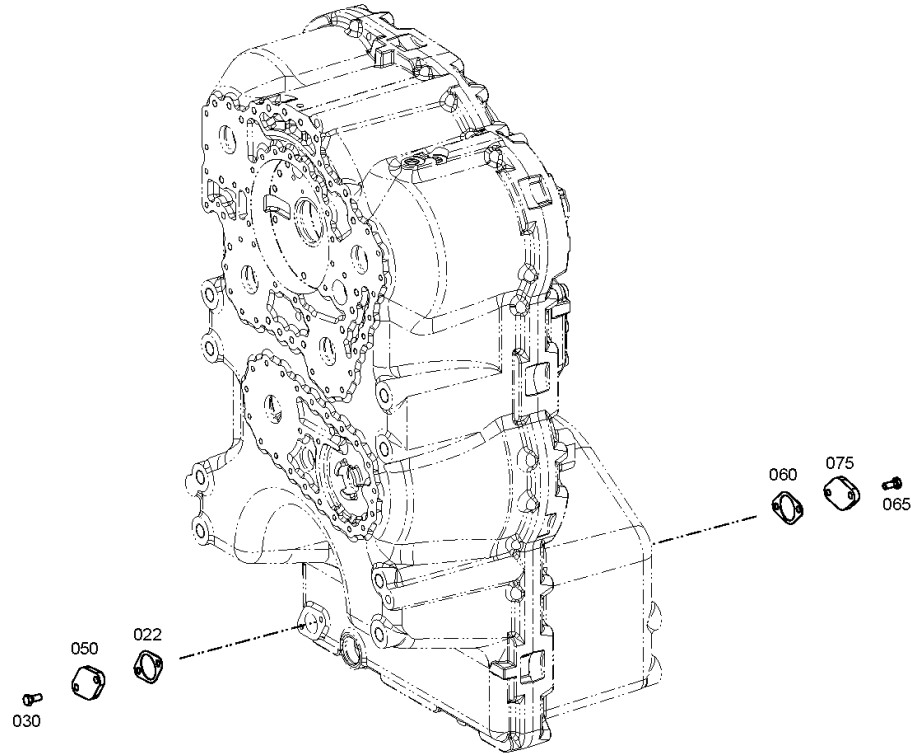
Material number: 4656.054.137

Picture: 465713101700

Material-assembly-group-no: 4657.131.017



4 WG 160 /  
FILLER NOZZLE



# Picture

Page 1 from 1

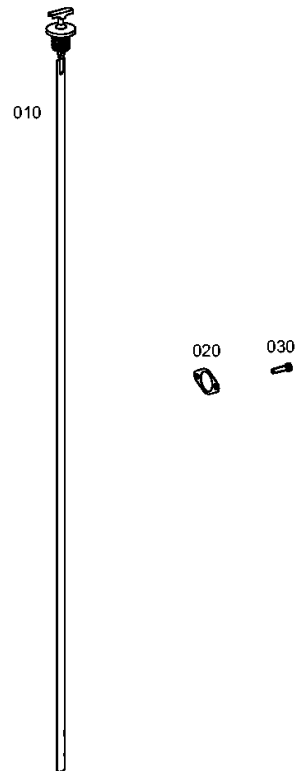
Material number: 4656.054.137

Picture: 465619902800

Material-assembly-group-no: 4656.199.028



4 WG 160 /  
LOOSE PARTS



# Picture

Page 1 from 1

Material number: 4656.054.137

Picture: 465618301500

Material-assembly-group-no: 4656.183.015



4 WG 160 /  
LOOSE PARTS

