



Spare Parts Catalog

6 WG 160

Material number: 4656.056.020

Current date: 25.04.2023

ZF Friedrichshafen AG
Hauptverwaltung
80038 Friedrichshafen
Deutschland

Telefon: +49 7541 77-0

Telefax: +49 7541 77-908000

www.zf.com

zuständiges Werk:
Passau

Notes relating to the spare parts catalog

Setup of the spare parts catalog

- Cover sheet
- Technical Cover (only in SDM print)
- Overview of figures
- Figure
- Associated parts list
- Next figure
- Associated parts list
- ...

Figure and parts list



Overview of figures

Bildtafel Figure	Sachnummer Product number	Benennung (Description)	Technische Info Technical info	Description (Benennung)	Menge Quantity	Einheit Unit
068.08.17	1316.170.001	AUSLEGER	WL	SHIFT TURRET	1	Stk
068.08.06	1316.170.031	DECKEL	WL*H-H *VM	COVER	1	Stk
068.08.14	1316.170.808	DECKEL	WL*AUSL+GEH*H-H*HF160N	COVER	1	Stk
08	1316.170.441	ANSCHLUSSTEILE	WL*NG-VORB*RG-SCHL*168N *BAJONETT	CONNECTING PARTS	1	Stk

The "gap" indicates that there is no separate graphics panel (poster) for this assembly
The parts of this assembly are shown with the same mid-section number on the figure

1 Positions and subpositions

Pos.	Sachnummer Product number	Benennung (Description)	Technische Info Technical info	Description (Benennung)	Menge Quantity	Einheit Unit
0370	1315.201.054	RUECKLAUFBOLZEN	KPL.16S151*SG*L= 79	REV.IDLER SHAFT	1	Stk
/0120	0631.329.293	SPANNSTIFT		SLOT. PIN	1	Stk

Positions marked with "/" are the individual items of a completion
For example: Position 0370 contains a centering pin with the position /0120

2 Combinations with standardized parts

Pos.	Sachnummer Product number	Benennung (Description)	Technische Info Technical info	Description (Benennung)	Menge Quantity	Einheit Unit
0630		VERSCHL.SCHR.		SCREW PLUG	1	Stk
	0636.302.067	VERSCHL.SCHR.		SCREW PLUG	1	Stk
	0634.801.249	DICHTRING	A 26 X 31	SEALING RING	1	Stk

The parts list shows the components included in the combination of standardized parts

3 Depiction of position/item number on the figure and in the parts list

01.620 - on the figure 01 relates to the assembly in which the position is included. Due to program-related reasons, it is shown on the figure.

0620 - in the parts list

Pos.	Sachnummer Product number	Benennung (Description)	Technische Info Technical info	Description (Benennung)	Menge Quantity	Einheit Unit
0620	0732.040.736	DRUCKFEDER		COMPRESSION SPRING	1	Stk

4 *-Positions

Positions marked with an * are optional i.e. inclusion in the parts list is not mandatory.
The following note is shown on the figure

je nach Stücklistenausführung
depending on spec. number
*
suivant la nomenclature
secondo la distinta base

5 Parts, dotted display

Parts with dotted display on the figure are only used for orientation of other parts

Technical Cover

Page 1 from 5

Material number: 4656.056.020



6 WG 160 /

Pos.	Information	Amendment number
	KUNDE: TCHDM	
	CUSTOMER:	
	IDENT-NO.: WITHOUT	
	CUSTOMER-NUMBER:	
	KUNDENNR.: 60 464	
	CUSTOMER PART-NUMBER:	
	PROJEKT-NR.:4707-2	
	PROJECT-NO.:	
	VEHICLE DATA:	
	VEHICLE DATA:	
	GRADER A120	
	VEHICLE TYPE:	
	VEHICLE WEIGHT: EMPTYT	
	VEHICLE WEIGHT: EMPTY.....TO	
	VEHICLE WEIGHT: LOADED 16,00T	
	VEHICLE WEIGHT: LOADED.....TO	
	MOTOR: YAMZ-236M2	
	ENGINE/MAKE/TYP:	
	MOTORLEISTUNG: P=132 KW BEI N=2100 UPM	
	ENGINE POWER:	
	ENGINE PERFORM.ACC.TO TRACTIVE EFFORT CALCUL.	
	ENGINE PERFORM.ACC.TO TRACTIVE EFFORT CALCUL.	
	DREHMOMENT: T= 660 NM BEI NP=1400 UPM	
	INPUT TORQUE:	
	REIFEN: 14.00-20	
	TIRES:	
	R.DYN. 0,555 M	
	ACHSUEBERSETZUNG:I A-GES.= 13,93	
	AXLE RATIO: I TOTAL=	
	MAX.SPEED: 47,0 KM/H	
	MAX.SPEED:	
	FAHRLEIST.BERECHNUNG: 4656 706 883	
	PERFORMACE CALCULATION:	

Technical Cover

Page 2 from 5

Material number: 4656.056.020



6 WG 160 /

Pos.	Information	Amendment number
	PRODUCT DESCRIPTION:	
	PRODUCT DESCRIPTION	
	TYP: 6WG-160	
	BEVEL SIDE GEAR SPLINE: N 38X1,25	
	INSTALLATION: SEPARATELY	
	INSTALLATION: SEPARATE	
	RATIOS TOTAL:	
	RATIOS:	
	FORWARD:	
	FORWARD:	
	1.G=5,202 2.G=3,367 3.G=2,191 4.G=1,418	
	5.G=0,944 6.G=0,611	
	REVERSE:	
	REVERSE:	
	1.G=4,939 2.G=2,078 3.G=0,895	
	INPUT:	
	INPUT:	
	FLANSCH AD=150 (DIN)	
	FLANGE:	
	OUTPUT:	
	OUTPUT:	
	FLANSCH: WANDLERSEI. DIN 150	
	FLANGE: CONVERTER SIDE	
	FLANSCH: BREMSSEITIG DIN 150	
	FLANGE: BRAKE SIDE	
	POWER TAKE-OFF(PTO): NO SHIFTABLE	
	P.T.O.: NOT SHIFTABLE	
	KOAX.MOTORABH.: SAE-B 2/4L 13T	
	COAX.ENGINE DRIVEN:	
	GEAR SELECTION: HSG 94	
	GEAR SELECTION:	
	VOLTAGE: 24 VOLT	
	VOLTAGE:	



Pos.	Information	Amendment number
	OPERATING PRES.: 16+2 BAR	
	OPERATING PRESSURE:	
	CONVERTER LOCK-UP CONTROL: WITHOUT	
	CONVERTER LOCK-UP CONTROL: WITHOUT	
	PR.DIFF.SWITCH: WITH	
	DIFF.PRESSURE SWITCH WITH	
	TEMP.GEBER F.OELTEMP.:MIT	
	TEMP.SENSOR FOR OILTEMP.: WITH	
	GEAR SELECTOR: WITH	
	GEAR SELECTOR: WITH	
	BEVEL SIDE GEAR SPLINE: N 38X1,25	
	BEVEL SIDE GEAR SPLINE: N 38X1,25	
	STEER.COL.: LEFT	
	STEER.COL.: LEFT	
	LENKSAEUL.DURCHM:38 MM	
	COLUMN DIA.:	
	SHIFT PATT.: 1-4	
	SHIFT PATT.:	
	WIRING: WITH	
	WIRING: WITH	
	PARKING BRAKE: WITH	
	PARKING BRAKE: WITH	
	SCHEIBENBREMSE: MECHANISCH BETAETIGT	
	DISC BRAKE: MECHANICAL ACTUATED	
	TYP/GROESSE: M90 GLEITS. D=380	
	TYPE/SIZE	
	TACHO: MIT (UEBER EST-37)	
	SPEEDOMETER: WITH	
	OELMESSSTAB:	
	OIL DIPSTICK:	
	AXLE DISCONNECT: NO	
	AXLE DISCONNECT: WITHOUT	
	ZF-FILTER: DIRECT MOUNTING	



Pos.	Information	Amendment number
	ADDITIONAL FILTER WITHOUT	
	DIFFERENTIAL PRESSURE SWITCH: WITH (CLOSING SWITCH)	
	ZF-FILTER: DIRECT MOUNTING	
	T-CONVERTER:	
	TORQUE CONVERTER:	
	BEZEICHNUNG: 30 H 165	
	MARKING:	
	CHARACTERISTICS:	
	CHARACTERISTICS:	
	START.TORQUE RAT.:1,91	
	START.TORQUE RAT.:	
	STATOR FREEWHEEL:WITHOUT	
	STATOR FREEWHEEL:WITHOUT	
	BREAK FREEWHEEL: WITHOUT	
	BRAKE FREEWHEEL: WITHOUT	
	LOCK-UP CLUTCH: WITHOUT	
	TORQUE CONVERTER LOCK-UP: WITHOUT	
	NOTLENKPUMPE: MIT(ANBAUMOEGlichkeit)	
	GROUND DRIV.PUMP: WITH MONTING POSSIBLE	
	FOERDERMENGE: OHNE	
	FLOW RATE: WITHOUT	
	DRAWINGS:	
	DRAWINGS:	
	SCHNITT: 4656 554 002(0)	
	SECT.DRAWING:	
	EINBAU: 4656 656 020(0)	
	INST.DRAWING:	
	ENGINE CONN.:	
	ENGINE CONN.:	
	GETR.SCHEMA: 4656 700 036	
	TRANSM.DIAGRAM:	
	OEL-SCHEMA: 4656 700 037	
	OIL-DIAGRAM:	

Technical Cover

Page 5 from 5

Material number: 4656.056.020



6 WG 160 /

Pos.	Information	Amendment number
	WANDLER: 4168 030 145 ()	
	TORQUE CONVERTER:	
	CALCULATIONS:	
	CALCULATIONS:	
	ASSEMBLY-GUIDELINE: 4657 700 079	
	INSTALLATION SPECIFICATION:	
	DRAWING FOR ELECTR.PARTS	
	DRAWING FOR ELECTR.PARTS	
	FAHRSCHALTER:6006 630 033(1)EBZ	
	RANGE SELECTOR:	
	STROMLAUFPL.:6029 701 320()	
	WIRING DIAGRAM:	
	ANSCHL.PLAN: 6029 701 321()	
	CONNECTION DIAGRAM:	
	CONTROL UNIT: 6009 665 002(1)EBZ	
	CONTROL UNIT:	
	STROMLAUFPL.:6006 700 564()FS	
	OIL CAPACITY:	
	OIL CAPACITY:	
	GESAMT: CA. 21,00L	
	TOTAL: CA.29,00L	
	OIL FILLING: NO	
	OIL FILLING: NO	
	OIL GRADE:SPECIFICATION TE ML 03 / TRANSMISSION	
	OIL GRADE:SPECIFICATION TE ML 03 TRANSMISSION	
	GESAMT-TROCKENMASSE: 431KG	
	WEIGHT/MASS (DRY):	
	COLOR: OXIDROT RAL 3009	
	COLOR:	
	PACKING:	
	PACKING:	
	*	

Assembly group overview

Page 1 from 2

Material number: 4656.056.020



6 WG 160 /

Picture	Pos.	Material number	Name	Quantity	Amend. no.	Techn. Info.
465613002300	270	4656.130.023	ENGINE CONNECTION	1		
465713040600	280	4657.130.406	ENGINE CONNECTION	1		
416603019800	500	4166.030.198	CONVERTER	1		
465610201500	30	4656.102.015	INPUT	1		
465610101901	10	4656.101.019	TRANSMISSION HOUSING	1		
465617105600	350	4656.171.056	COUPLING	1		
465617204000	360	4656.172.040	COUPLING	1		
465617304700	370	4656.173.047	COUPLING	1		
465617403800	380	4656.174.038	COUPLING	1		
465617505000	390	4656.175.050	CLUTCH	1		
465617606000	400	4656.176.060	CLUTCH	1		
465610300800	50	4656.103.008	OUTPUT	1		
465610341000	60	4656.103.410	OUTPUT	1		
465610900300	170	4656.109.003	PARKING BRAKE	1		
465610940800	70	4656.109.408	PARKING BRAKE	1		
465615400500	340	4656.154.005	POWER TAKE-OFF	1		

Assembly group overview

Page 2 from 2

Material number: 4656.056.020



6 WG 160 /

Picture	Pos.	Material number	Name	Quantity	Amend. no.	Techn. Info.
465610601300	110	4656.106.013	SHIFT SYSTEM	1		
465710640720	115	4657.106.407	SHIFT SYSTEM	1		
465615901921	120	4656.159.019	SHIFT SYSTEM	1		
465612300200	230	4656.123.002	CONTROL UNIT	1		
465612000500	190	4656.120.005	PRESSURE REGULATOR	1		
465612200500	220	4656.122.005	PRESSURE OIL PUMP	1		
465713700200	310	4657.137.002	EMERGENCY STEERING PUMP	1		
465612500600	250	4656.125.006	INDUCTIVE SENSOR	1		
465712400300	240	4657.124.003	TEMPERATURE SENSOR	1		
465613800600	330	4656.138.006	FILTER	1		
465613100600	290	4656.131.006	OIL DIPSTICK	1		
465618302700	495	4656.183.027	LOOSE PARTS	1		

Picture

Page 1 from 1

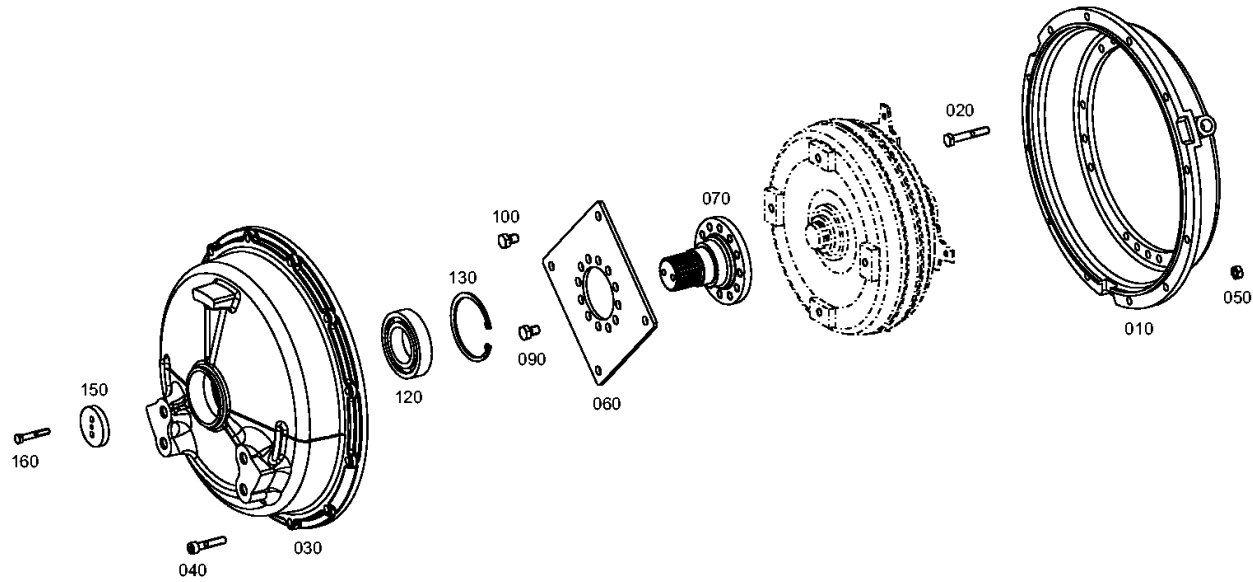
Material number: 4656.056.020

Picture: 465613002300

Material-assembly-group-no: 4656.130.023



6 WG 160 /
ENGINE CONNECTION



Picture

Page 1 from 1

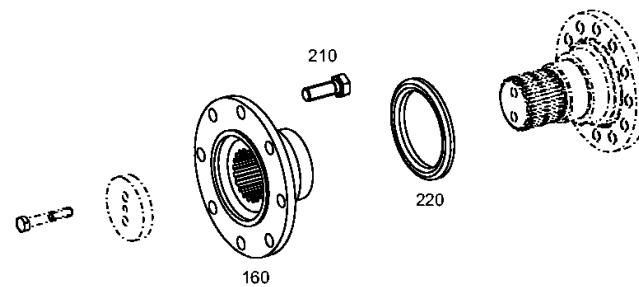
Material number: 4656.056.020

Picture: 465713040600

Material-assembly-group-no: 4657.130.406



6 WG 160 /
ENGINE CONNECTION



Picture

Page 1 from 1

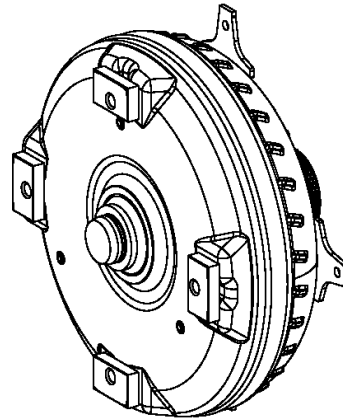
Material number: 4656.056.020

Picture: 416603019800

Material-assembly-group-no: 4166.030.198



6 WG 160 /
CONVERTER



010

Picture

Page 1 from 1

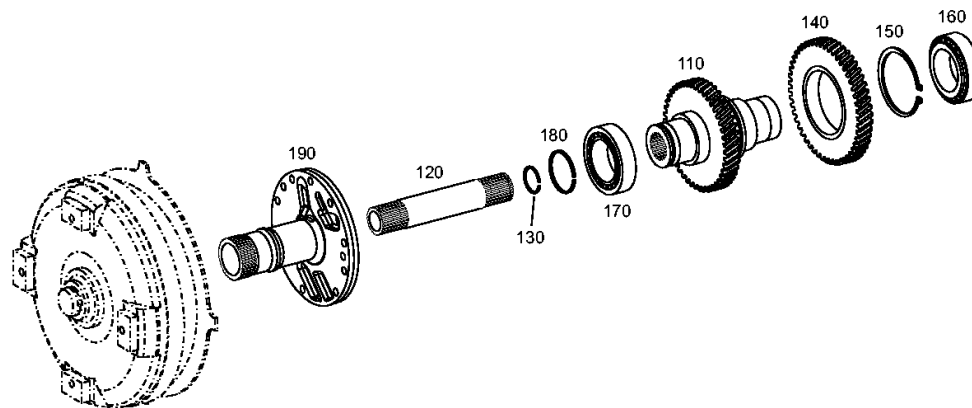
Material number: 4656.056.020

Picture: 465610201500

Material-assembly-group-no: 4656.102.015



6 WG 160 /
INPUT



Picture

Page 1 from 2

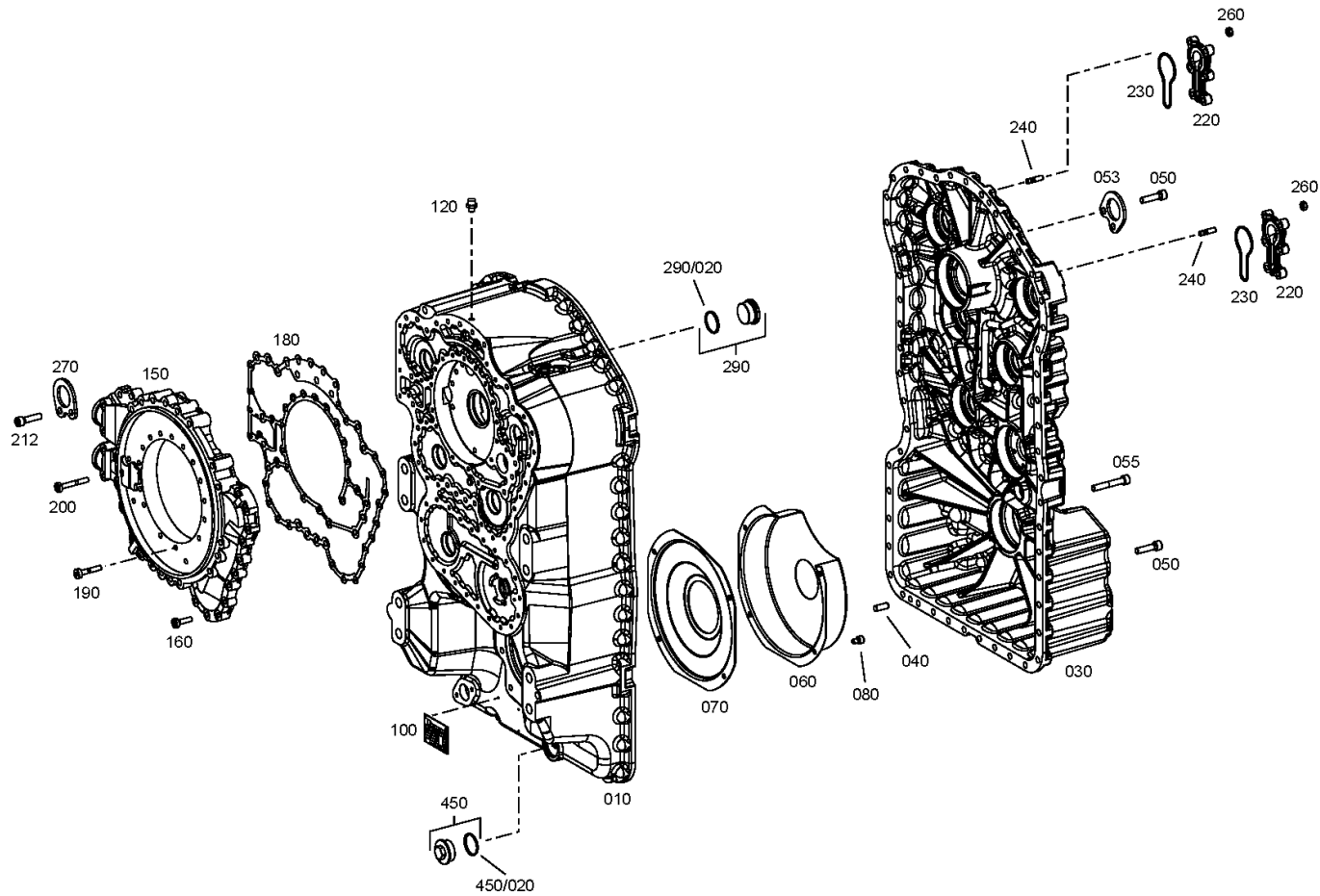
Material number: 4656.056.020

Picture: 465610101901

Material-assembly-group-no: 4656.101.019



6 WG 160 /
TRANSMISSION HOUSING



Picture

Page 2 from 2

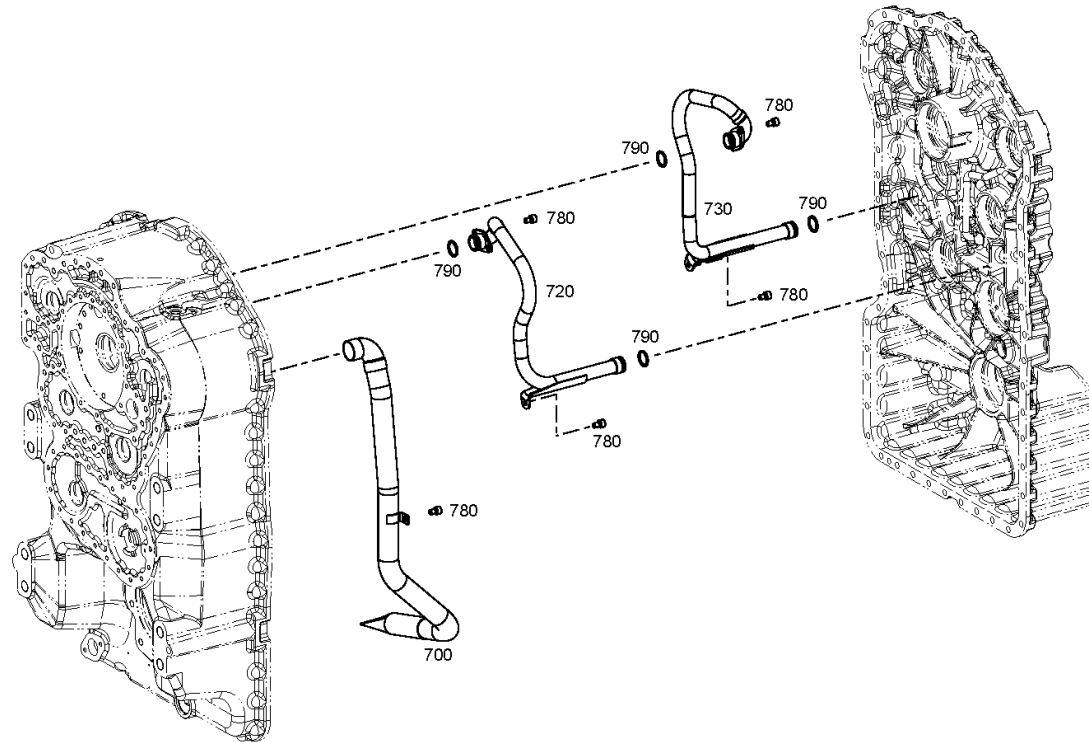
Material number: 4656.056.020

Picture: 465610101902

Material-assembly-group-no: 4656.101.019



6 WG 160 /
TRANSMISSION HOUSING



Picture

Page 1 from 1

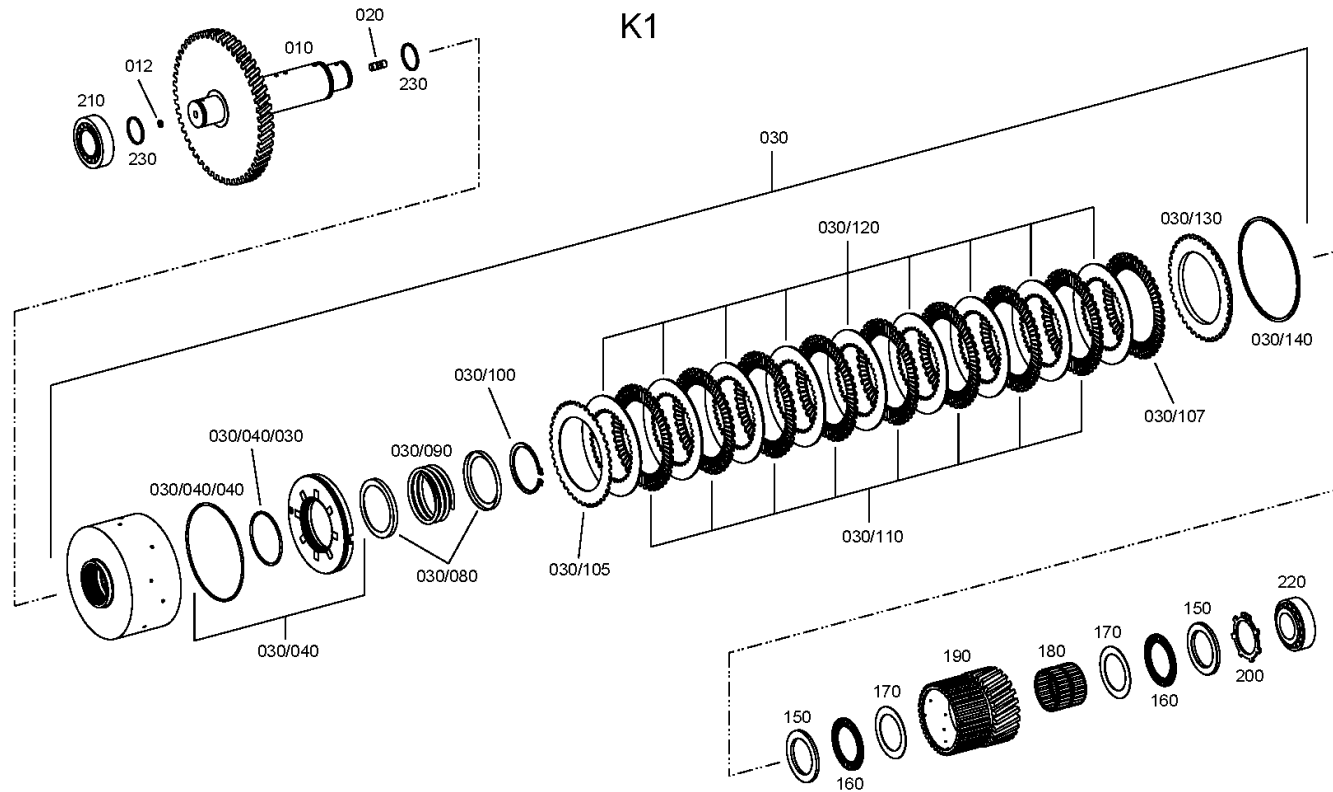
Material number: 4656.056.020

Picture: 465617105600

Material-assembly-group-no: 4656.171.056



6 WG 160 /
COUPLING



Picture

Page 1 from 1

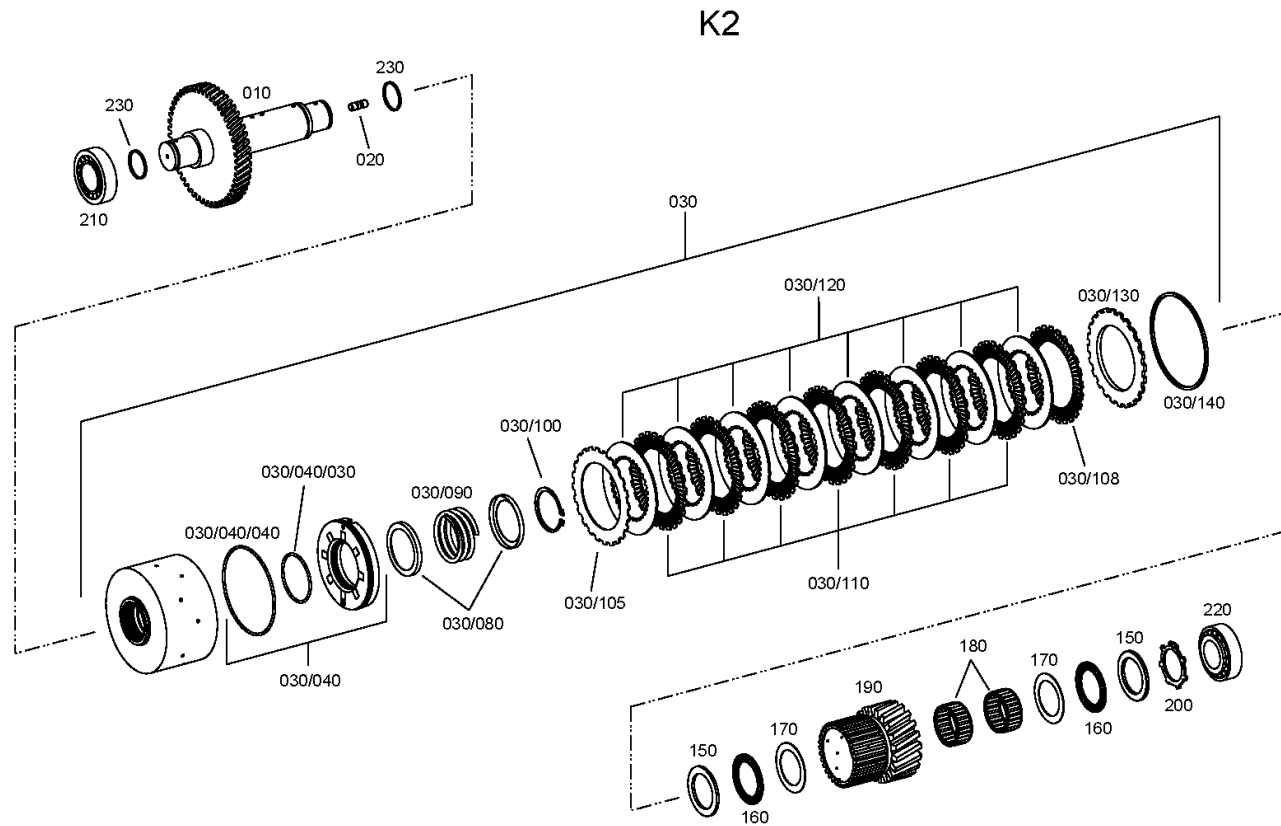
Material number: 4656.056.020

Picture: 465617204000

Material-assembly-group-no: 4656.172.040



6 WG 160 /
COUPLING



Picture

Page 1 from 1

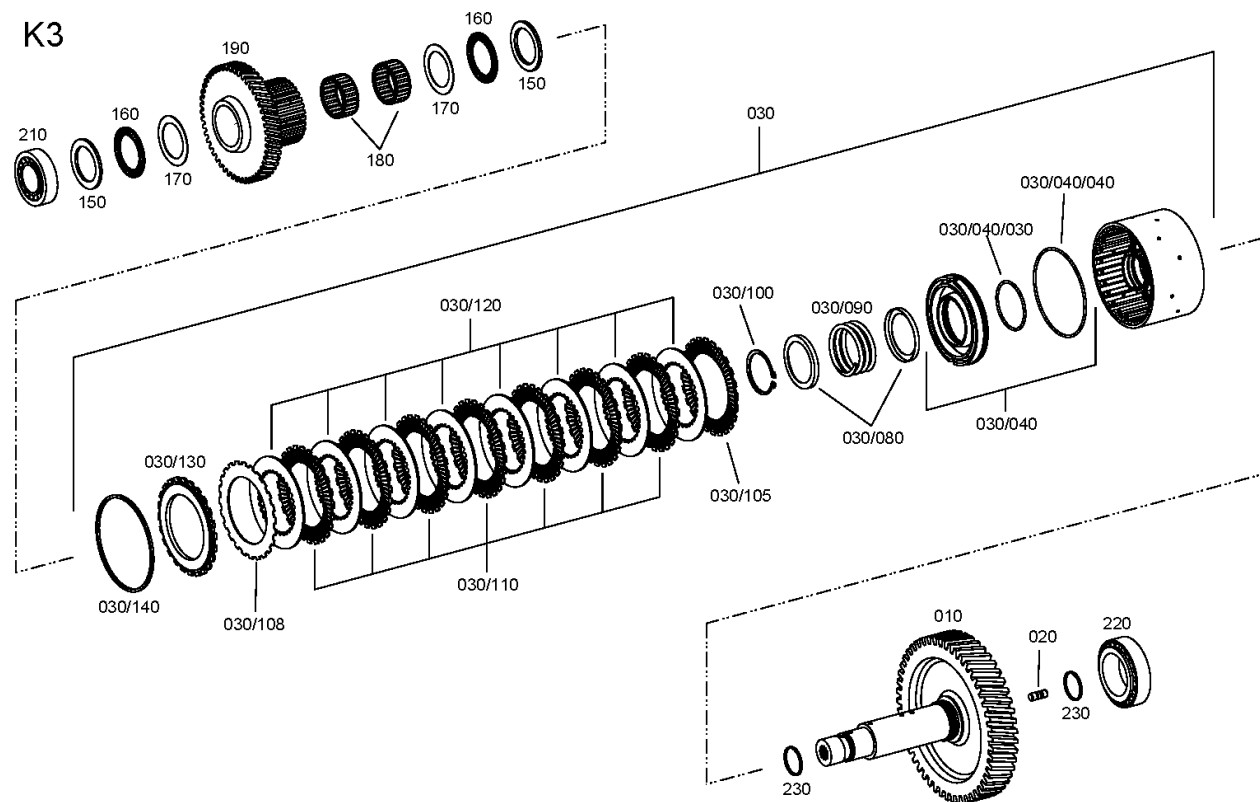
Material number: 4656.056.020

Picture: 465617304700

Material-assembly-group-no: 4656.173.047



6 WG 160 /
COUPLING



Picture

Page 1 from 1

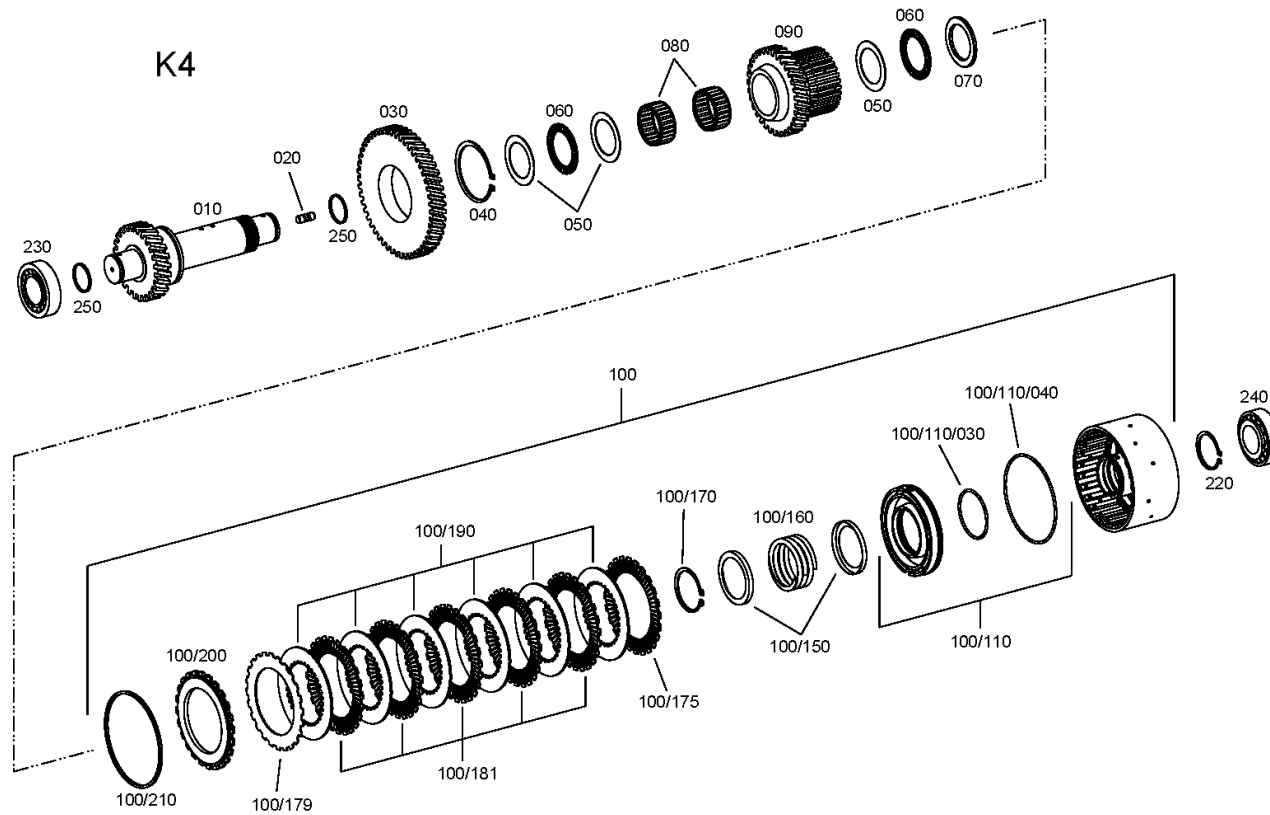
Material number: 4656.056.020

Picture: 465617403800

Material-assembly-group-no: 4656.174.038



6 WG 160 /
COUPLING



Picture

Page 1 from 1

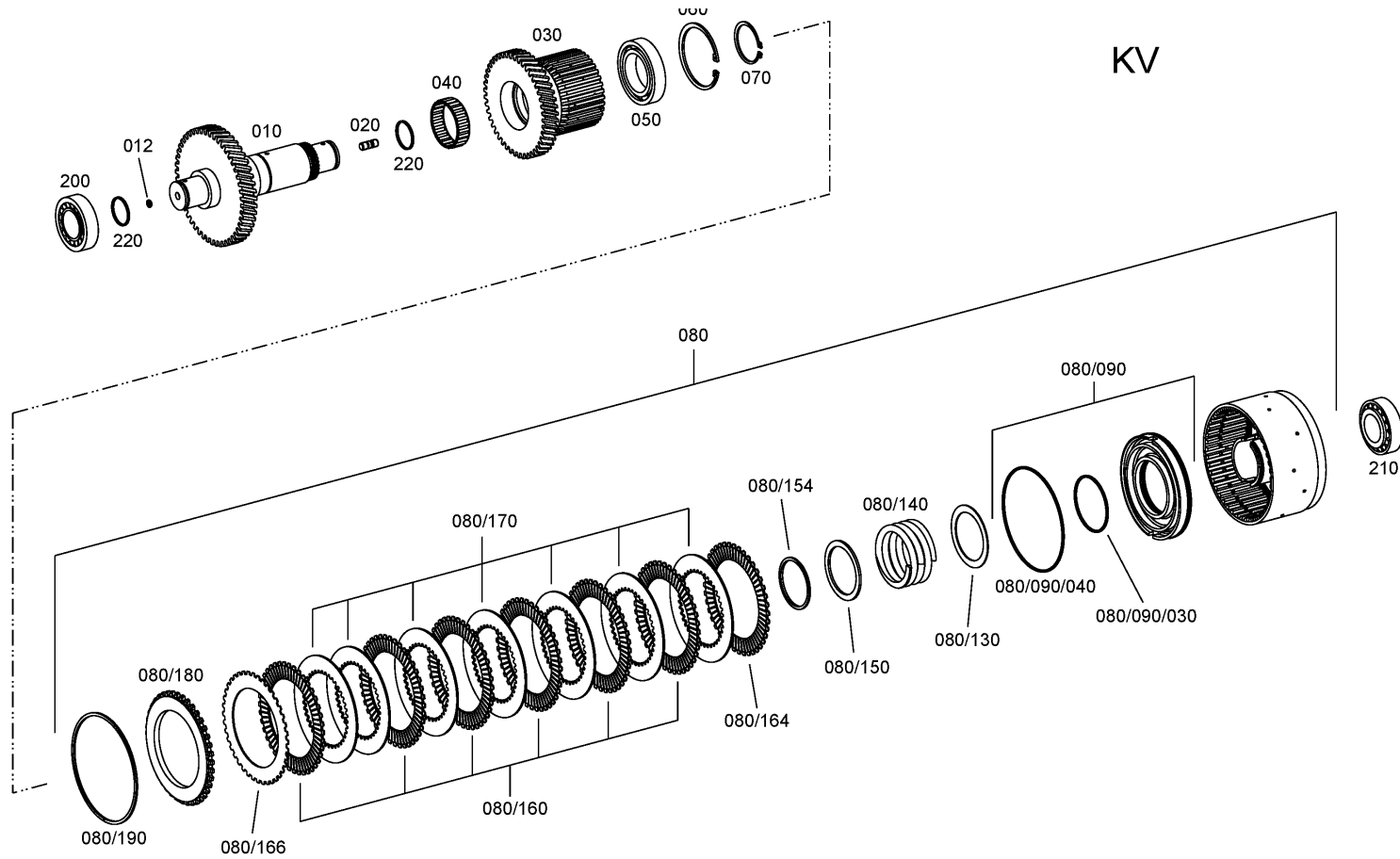
Material number: 4656.056.020

Picture: 465617505000

Material-assembly-group-no: 4656.175.050



6 WG 160 /
CLUTCH



Picture

Page 1 from 1

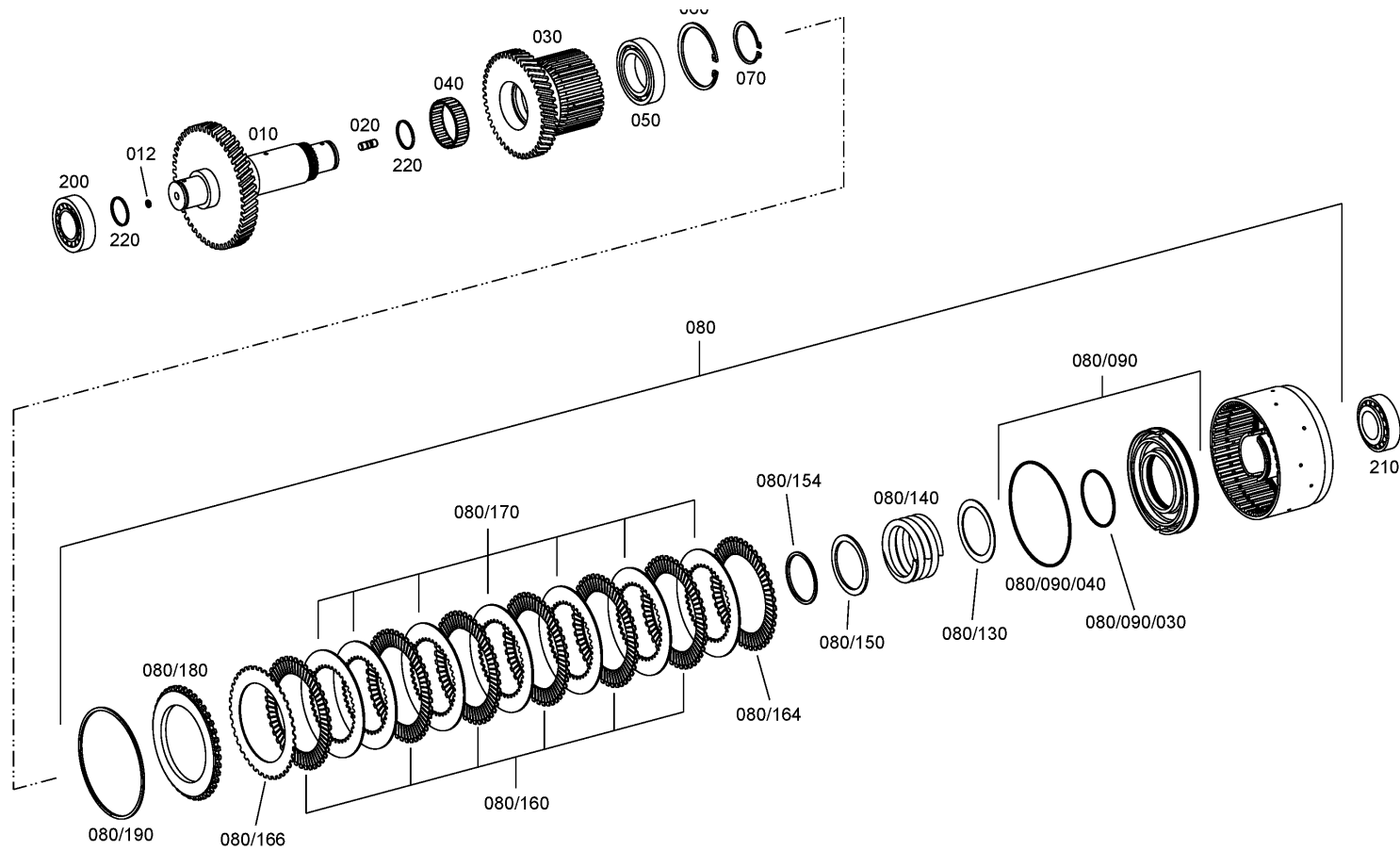
Material number: 4656.056.020

Picture: 465617606000

Material-assembly-group-no: 4656.176.060



6 WG 160 /
CLUTCH



Picture

Page 1 from 1

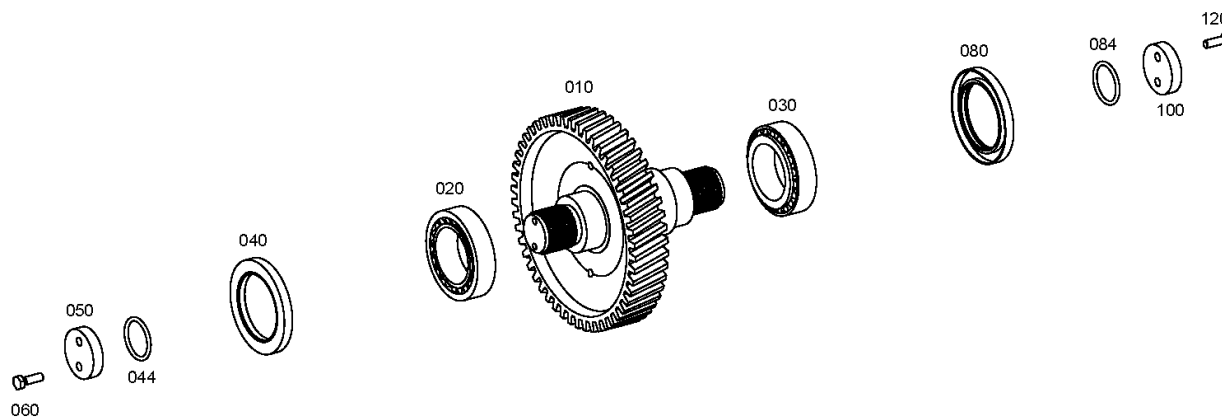
Material number: 4656.056.020

Picture: 465610300800

Material-assembly-group-no: 4656.103.008



6 WG 160 /
OUTPUT



Picture

Page 1 from 1

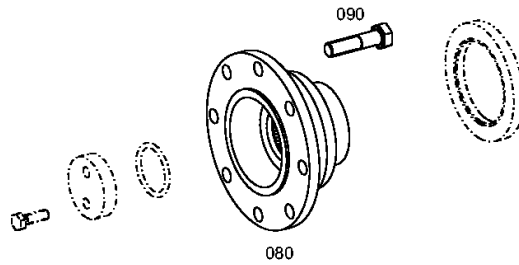
Material number: 4656.056.020

Picture: 465610341000

Material-assembly-group-no: 4656.103.410



6 WG 160 /
OUTPUT



Picture

Page 1 from 1

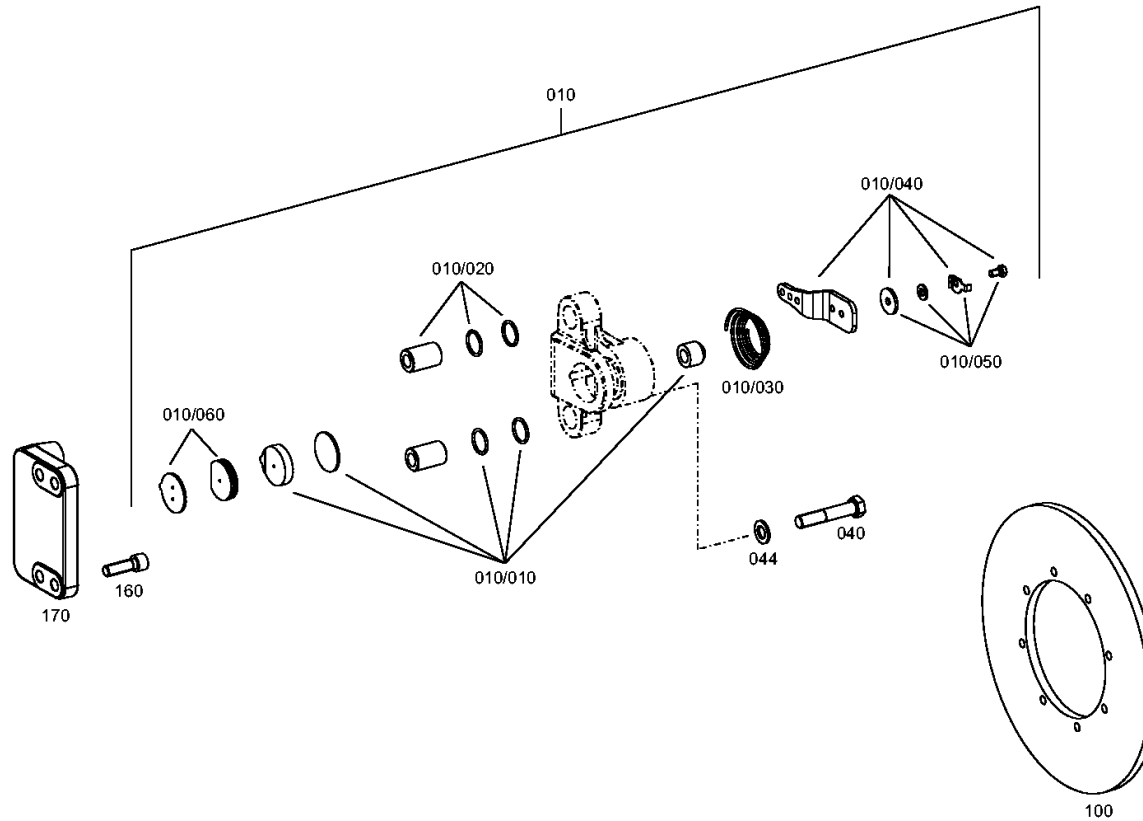
Material number: 4656.056.020

Picture: 465610900300

Material-assembly-group-no: 4656.109.003



6 WG 160 /
PARKING BRAKE



Picture

Page 1 from 1

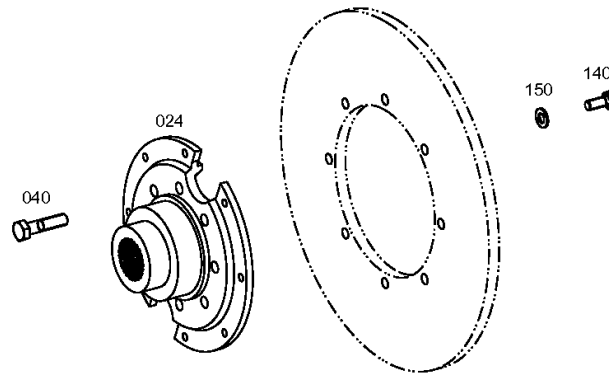
Material number: 4656.056.020

Picture: 465610940800

Material-assembly-group-no: 4656.109.408



6 WG 160 /
PARKING BRAKE



Picture

Page 1 from 1

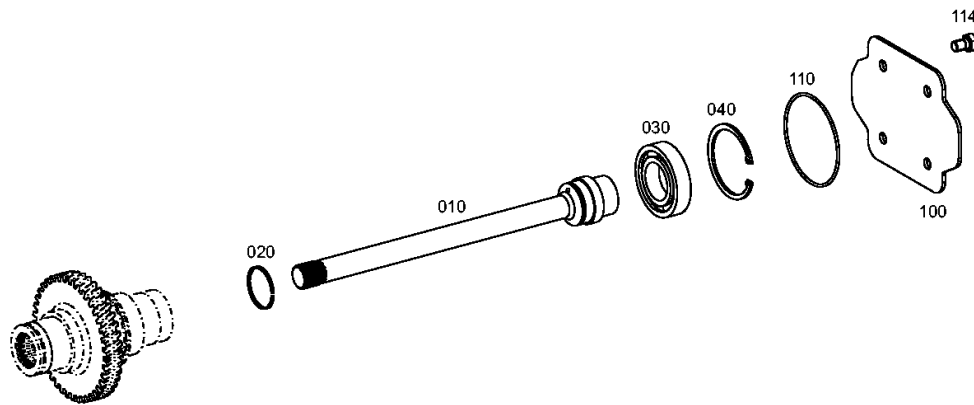
Material number: 4656.056.020

Picture: 465615400500

Material-assembly-group-no: 4656.154.005



6 WG 160 /
POWER TAKE-OFF



Picture

Page 1 from 1

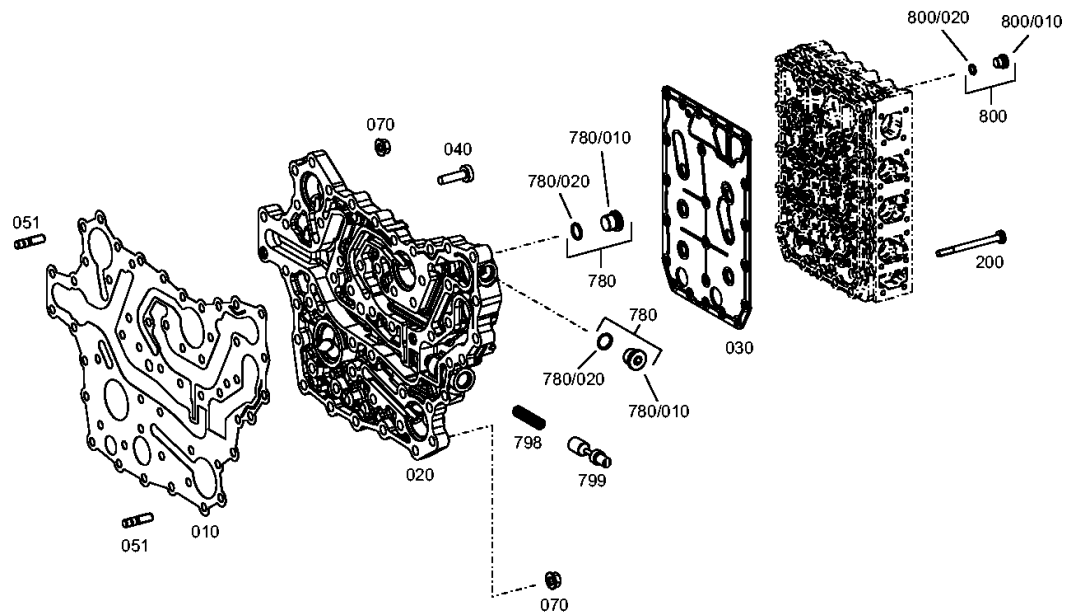
Material number: 4656.056.020

Picture: 465610601300

Material-assembly-group-no: 4656.106.013



6 WG 160 /
SHIFT SYSTEM



Picture

Page 1 from 1

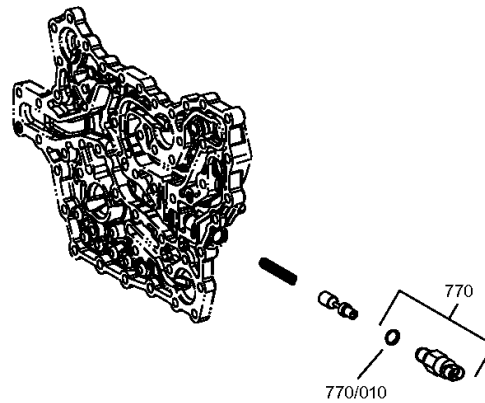
Material number: 4656.056.020

Picture: 465710640720

Material-assembly-group-no: 4657.106.407



6 WG 160 /
SHIFT SYSTEM



Picture

Page 1 from 2

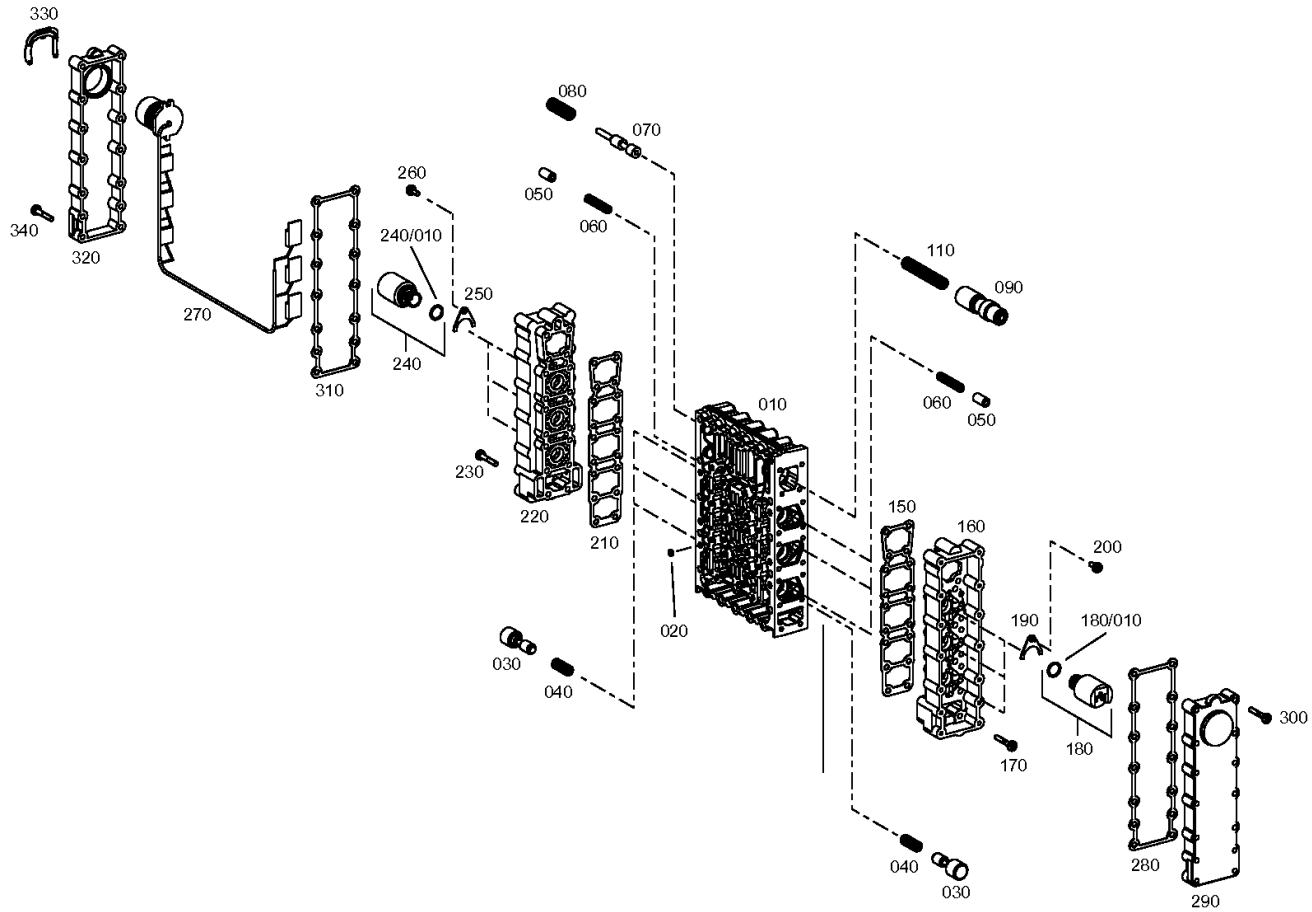
Material number: 4656.056.020

Picture: 465615901921

Material-assembly-group-no: 4656.159.019



6 WG 160 /
SHIFT SYSTEM



Picture

Page 2 from 2

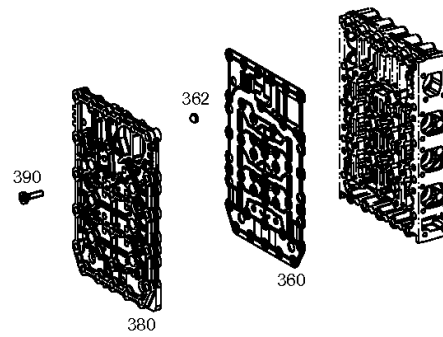
Material number: 4656.056.020

Picture: 465615901922

Material-assembly-group-no: 4656.159.019



6 WG 160 /
SHIFT SYSTEM



Picture

Page 1 from 1

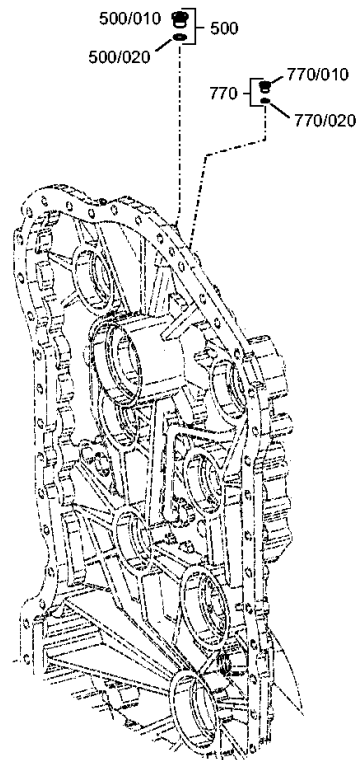
Material number: 4656.056.020

Picture: 465612300200

Material-assembly-group-no: 4656.123.002



6 WG 160 /
CONTROL UNIT



Picture

Page 1 from 1

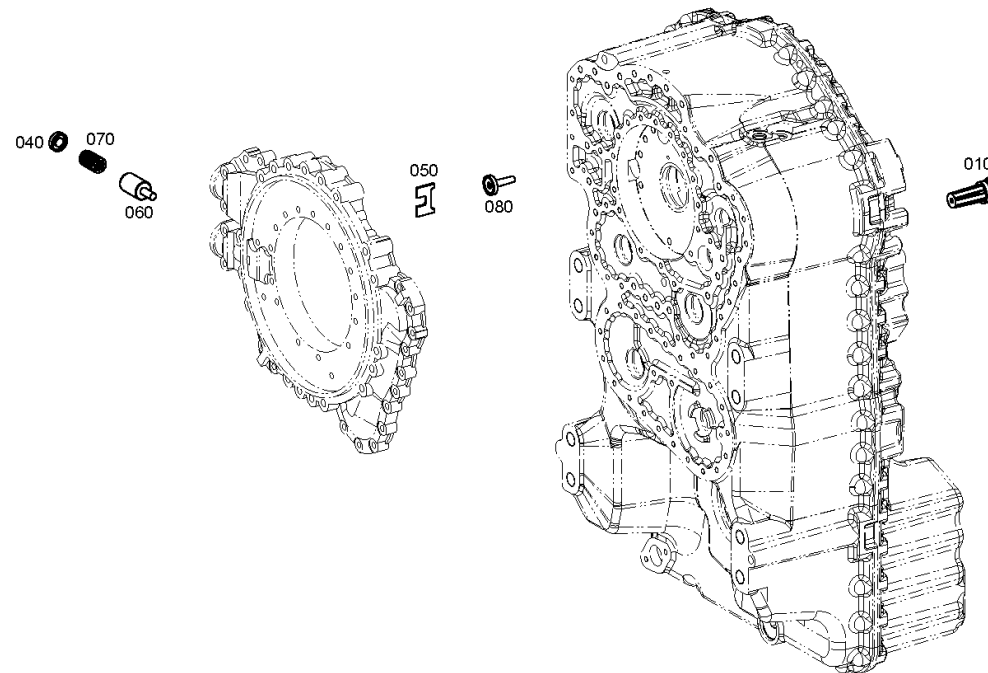
Material number: 4656.056.020

Picture: 465612000500

Material-assembly-group-no: 4656.120.005



6 WG 160 /
PRESSURE REGULATOR



Picture

Page 1 from 1

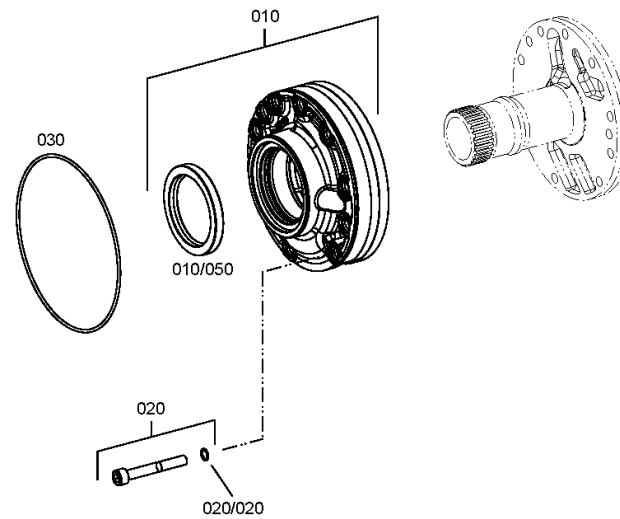
Material number: 4656.056.020

Picture: 465612200500

Material-assembly-group-no: 4656.122.005



6 WG 160 /
PRESSURE OIL PUMP



Picture

Page 1 from 1

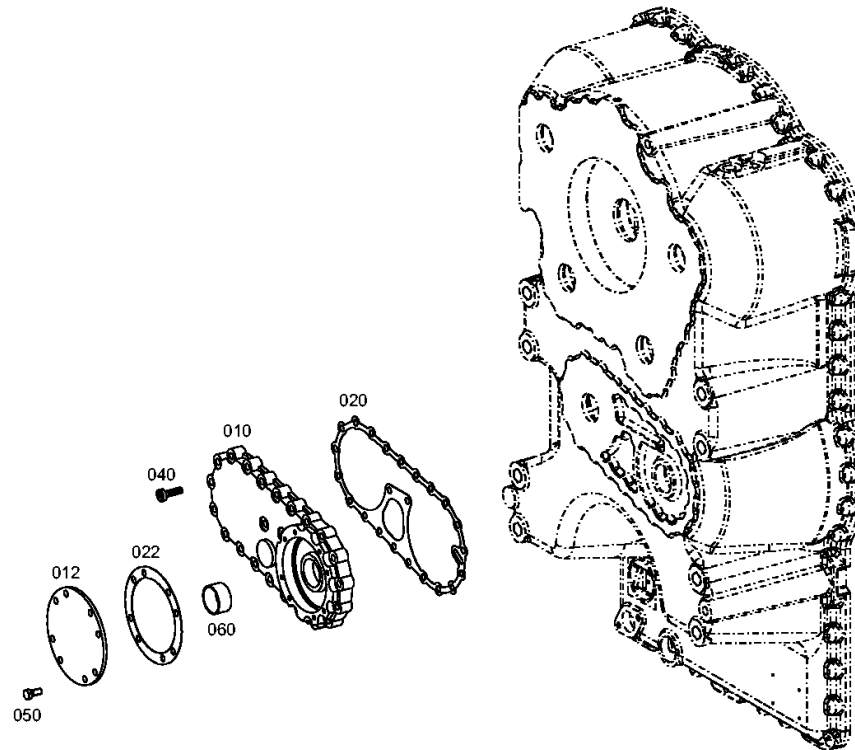
Material number: 4656.056.020

Picture: 465713700200

Material-assembly-group-no: 4657.137.002



6 WG 160 /
EMERGENCY STEERING PUMP



Picture

Page 1 from 1

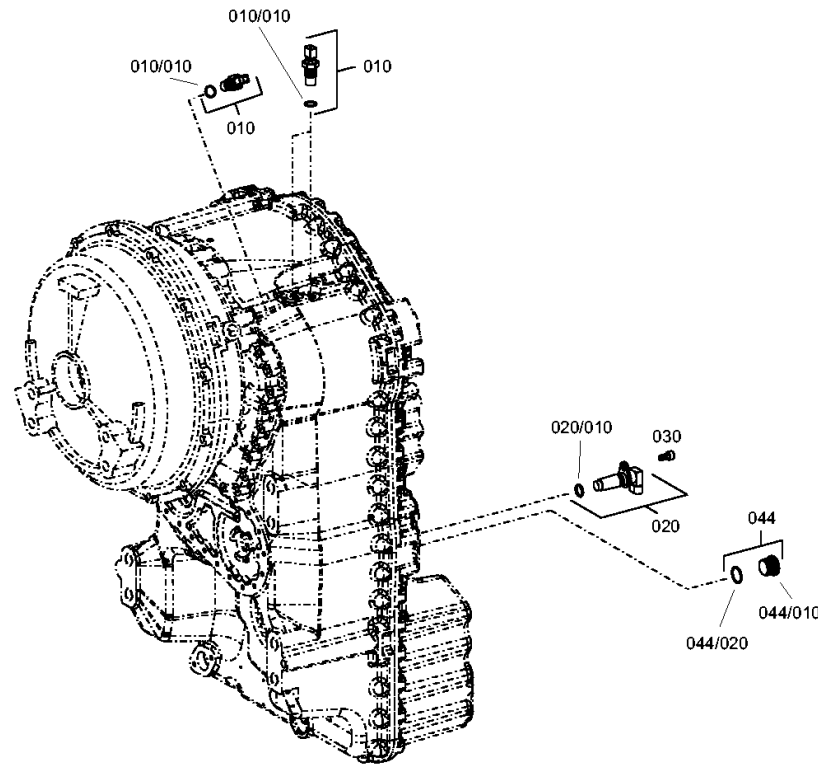
Material number: 4656.056.020

Picture: 465612500600

Material-assembly-group-no: 4656.125.006



6 WG 160 /
INDUCTIVE SENSOR



Picture

Page 1 from 1

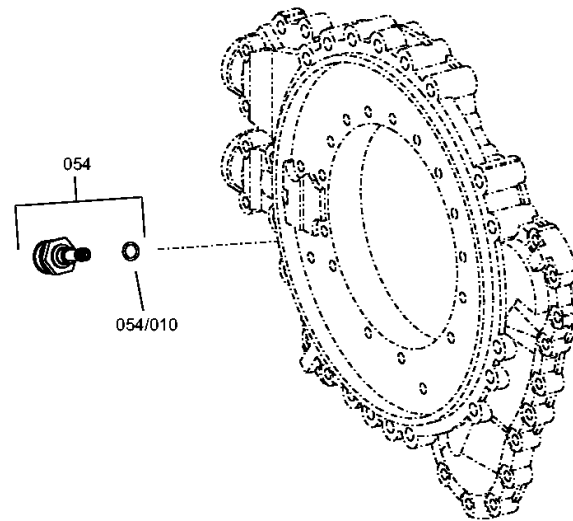
Material number: 4656.056.020

Picture: 465712400300

Material-assembly-group-no: 4657.124.003



6 WG 160 /
TEMPERATURE SENSOR



Picture

Page 1 from 1

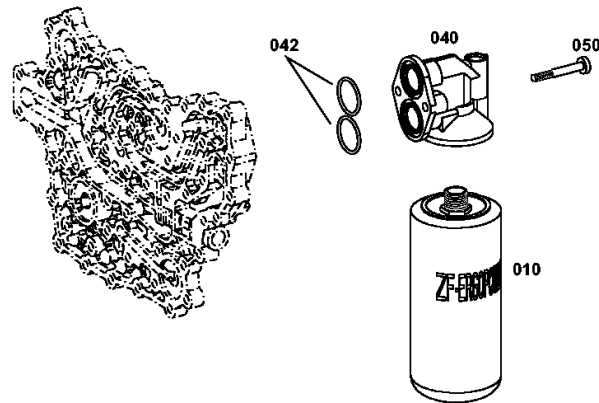
Material number: 4656.056.020

Picture: 465613800600

Material-assembly-group-no: 4656.138.006



6 WG 160 /
FILTER



Picture

Page 1 from 1

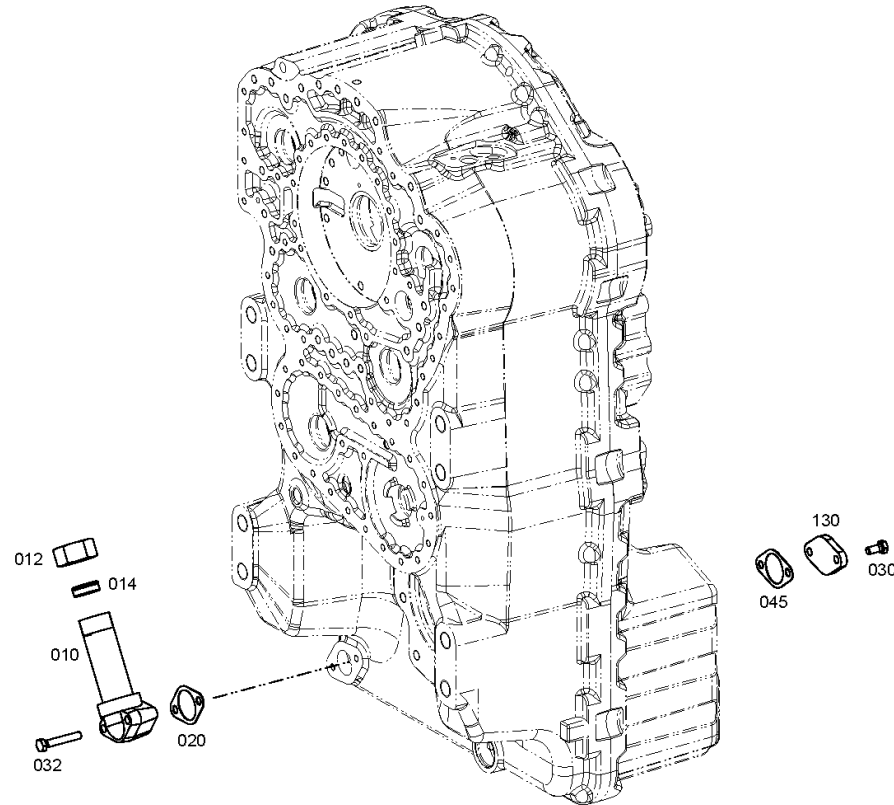
Material number: 4656.056.020

Picture: 465613100600

Material-assembly-group-no: 4656.131.006



6 WG 160 /
OIL DIPSTICK



Picture

Page 1 from 1

Material number: 4656.056.020

Picture: 465618302700

Material-assembly-group-no: 4656.183.027



6 WG 160 /
LOOSE PARTS

