



# Spare Parts Catalog

3 WG 161

Material number: 4656.063.052

Current date: 19.04.2023

ZF Friedrichshafen AG  
Hauptverwaltung  
80038 Friedrichshafen  
Deutschland

Telefon: +49 7541 77-0

Telefax: +49 7541 77-908000

[www.zf.com](http://www.zf.com)

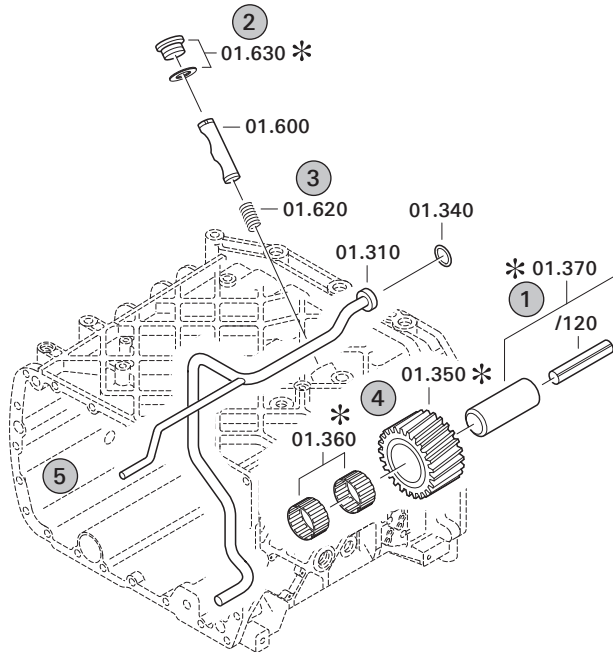
zuständiges Werk:  
Passau

# Notes relating to the spare parts catalog

## Setup of the spare parts catalog

- Cover sheet
- Technical Cover (only in SDM print)
- Overview of figures
- Figure
- Associated parts list
- Next figure
- Associated parts list
- ...

## Figure and parts list



## Overview of figures

Bildtafel Figure	Sachnummer Product number	Benennung (Description)	Technische Info Technical info	Description (Benennung)	Menge Quantity	Einheit Unit
068.08.17	1316.170.001	AUSLEGER	WL	SHIFT TURRET	1	Stk
068.08.06	1316.170.031	DECKEL	WL*H-H *VM	COVER	1	Stk
068.08.14	1316.170.808	DECKEL	WL*AUSL+GEH*H-H*HF160N	COVER	1	Stk
08	1316.170.441	ANSCHLUSSTEILE	WL*NG-VORB*RG-SCHL*168N *BAJONETT	CONNECTING PARTS	1	Stk

The "gap" indicates that there is no separate graphics panel (poster) for this assembly  
The parts of this assembly are shown with the same mid-section number on the figure

### 1 Positions and subpositions

Pos.	Sachnummer Product number	Benennung (Description)	Technische Info Technical info	Description (Benennung)	Menge Quantity	Einheit Unit
0370	1315.201.054	RUECKLAUFBOLZEN	KPL.16S151*SG*L= 79	REV.IDLER SHAFT	1	Stk
/0120	0631.329.293	SPANNSTIFT		SLOT. PIN	1	Stk

Positions marked with "/" are the individual items of a completion  
For example: Position 0370 contains a centering pin with the position /0120

### 2 Combinations with standardized parts

Pos.	Sachnummer Product number	Benennung (Description)	Technische Info Technical info	Description (Benennung)	Menge Quantity	Einheit Unit
0630		VERSCHL.SCHR.		SCREW PLUG	1	Stk
	0636.302.067	VERSCHL.SCHR.		SCREW PLUG	1	Stk
	0634.801.249	DICHTRING	A 26 X 31	SEALING RING	1	Stk

The parts list shows the components included in the combination of standardized parts

### 3 Depiction of position/item number on the figure and in the parts list

01.620 - on the figure      01 relates to the assembly in which the position is included. Due to program-related reasons, it is shown on the figure.

0620 - in the parts list

Pos.	Sachnummer Product number	Benennung (Description)	Technische Info Technical info	Description (Benennung)	Menge Quantity	Einheit Unit
0620	0732.040.736	DRUCKFEDER		COMPRESSION SPRING	1	Stk

### 4 \*-Positions

Positions marked with an \* are optional i.e. inclusion in the parts list is not mandatory.  
The following note is shown on the figure

je nach Stücklistenausführung  
depending on spec. number  
\*  
suivant la nomenclature  
secondo la distinta base

### 5 Parts, dotted display

Parts with dotted display on the figure are only used for orientation of other parts

# Technical Cover

Page 1 from 3

Material number: 4656.063.052



3 WG 161 /

Pos.	Information	Amendment number
	CUSTOMER: KALMAR SWEDEN	
	CUSTOMER-IDENT-NO.: 923892.0014	
	1.PERFORMANCE CALC.: 4656.707.154	
	VEHICLE DESIGNATION: DCG 90-180	
	WEIGHT LOADED: 39,100 TO	
	ENGINE: CUMMINS QSB6.7 FR91436 TIER 3	
	ENGINE POWER: 132,6 KW	
	SPEED: 2.000 U/MIN	
	INPUT TORQUE: 800 NM	
	SPEED: 1.400 U/MIN	
	TYRE SIZE: 12.00-20	
	TYRE RADIUS DYN.: 0,530 M	
	AXLE RATIO: 14,400	
	MAX. SPEED: 27,7 KM/H	
	2.PERFORMANCE CALC.: 4656.707.155	
	VEHICLE APPLICATION: DCG 90-180	
	WEIGHT LOADED: 39,10 TO	
	ENGINE: CUMMINS QSB6.7 FR91436 TIER 3	
	ENGINE POWER: 132,1 KW	
	SPEED: 1.950 U/MIN	
	INPUT TORQUE: 800 NM	
	SPEED: 1.400 U/MIN	
	TIRES: 12.00-20	
	TYRE RADIUS DYN.: 0,530 M	
	AXLE RATIO: 14,400	
	MAX. SPEED: 23,1 KM/H	
	PRODUCT DESCRIPTION: ZF-ERGOPOWER TRANSMISSION	
	TRANSMISSION TYPE: 3 WG 161	
	DROP CENTER DISTANCE: 300 MM	
	VEHICLE: FORK LIFT	
	1. GEAR FORWARD: 4,578	
	2. GEAR FORWARD: 2,396	
	3. GEAR FORWARD: 0,994	



Pos.	Information	Amendment number
	1. GEAR REVERSE: 4,593	
	2. GEAR REVERSE: 2,404	
	3. GEAR REVERSE: 0,997	
	NUMBER OF PULSES ENGIN: 4	
	NUMBER OF PULSES TURB: 51	
	NUMBER OF PULSES MRK: 58	
	NUMBER OF PULSES OUTP.: 62	
	CONVERTER: W 300	
	CONVERTER PART NR.: 030 H 269	
	LOCK-UP CLUTCH: WITHOUT	
	STALL TORQUE RATIO: 1,91	
	TORQUE CONVERTER ABSORP 623 NM	
	STATOR FREEWHEEL: WITHOUT	
	ENGINE INPUT: DIRECT MOUNTED TO ENGINE	
	ENGINE: CUMMINS	
	ENGINE-CONNECTION: SAE 3 4656 500 069	
	OUTPUT: STANDARD	
	OUTPUT PTO SIDE: WITHOUT PARKING BRAKE	
	OUTPUT FLANGE PTO SIDE: D 150 CT 4 X DIA 12 X 50	
	POWER TAKE OFF: 1 PTO COAXIAL ENGINE-DEPENDENT	
	1.PTO FLANGE: SAE C 2/4 HOLE	
	DRIVER / PROFILE: SAE C 12/24 DP 14 T	
	GEAR CHANGE CONTROL: ZF-ERGOSHIFT/ PROP VALVE	
	VOLTAGE: 24 VOLT	
	SPEED CONTROL: CONNECTION VIA EST	
	OIL LEVEL TUBE: MOUNTED ON PTO - SIDE	
	OIL DIPSTICK: LONG / STRAIGHT	
	FILTER INSTALLATION: DIRECT MOUNTED	
	PRES. DROP SWITCH: CLOSING SWITCH	
	EMERGENCY STEERING PUMP WITHOUT	
	OIL TEMPERATURE SENSOR: WITH (VIA EST )	
	GEARBOX BREATHER: WITH	
	ERGO INCH: WITH	

# Technical Cover

Page 3 from 3

Material number: 4656.063.052



3 WG 161 /

Pos.	Information	Amendment number
	ELECTRIC PARTS ORDER: SEPARATE ORDER	
	SEPARATE ORDER: EST-37A S. SCD 002000019762	
	CONTROL UNIT: EST 37A	
	GEAR SELECTOR: WITHOUT	
	2ND GEAR SELECTOR: WITHOUT	
	DISPLAY: WITHOUT	
	LOAD SENSOR: WITHOUT	
	WIRING: WITHOUT	
	OIL CAPACITY TRANSM.: CA. 18 LITRE	
	OIL FILLING TRANSM.: WITHOUT	
	OIL GRADE TRANSM.: TE- ML 03	
	PRIMER PAINT: YELLOW RAL 1006	
	DOCUMENTATION GEAR BOX: -----	
	SECTION DRAWING: 4656 063 012	
	INSTALLATION DRAWING: 4656.663.052	
	GEARBOX DIAGRAM: 4656.700.067	
	OIL CIRCUIT DIAGRAM: 4656 700 075	
	INSTALL. INSTRUCTIONS: 0000 702 951	
	DOCU. CONTROL UNIT: -----	
	DRAWING 6009.665.002	
	CONNECTION DIAGRAM: S. SOFTWARE CONTROL DOC. (SCD)	

# Assembly group overview

Page 1 from 2



3 WG 161 /

Material number: 4656.063.052

Picture	Pos.	Material number	Name	Quantity	Amend. no.	Techn. Info.
465613003900	270	4656.130.039	ENGINE CONNECTION	1		
416603019800	500	4166.030.198	CONVERTER	1		
465610200600	30	4656.102.006	INPUT	1		
465610102801	10	4656.101.028	TRANSMISSION HOUSING	1		
465710141300	20	4657.101.413	TRANSMISSION HOUSING	1		
414313900100	15	4143.139.001	TYPE PLATE	1		
465617106400	350	4656.171.064	COUPLING	1		
465617204400	360	4656.172.044	COUPLING	1		
465617305400	370	4656.173.054	COUPLING	1		
465617505100	390	4656.175.051	CLUTCH	1		
465617606300	400	4656.176.063	CLUTCH	1		
465610341700	70	4656.103.417	OUTPUT	1		
465615400800	340	4656.154.008	POWER TAKE-OFF	1		
465610601400	110	4656.106.014	SHIFT SYSTEM	1		
465710640760	115	4657.106.407	SHIFT SYSTEM	1		
465615902361	120	4656.159.023	SHIFT SYSTEM	1		

# Assembly group overview

Page 2 from 2

Material number: 4656.063.052



3 WG 161 /

Picture	Pos.	Material number	Name	Quantity	Amend. no.	Techn. Info.
465612001200	190	4656.120.012	PRESSURE REGULATOR	1		
465712200500	220	4657.122.005	PRESSURE OIL PUMP	1		
465612501000	240	4656.125.010	INDUCTIVE SENSOR	1		
465613801700	330	4656.138.017	FILTER	1		
465613101100	290	4656.131.011	OIL DIPSTICK	1		

# Picture

Page 1 from 1

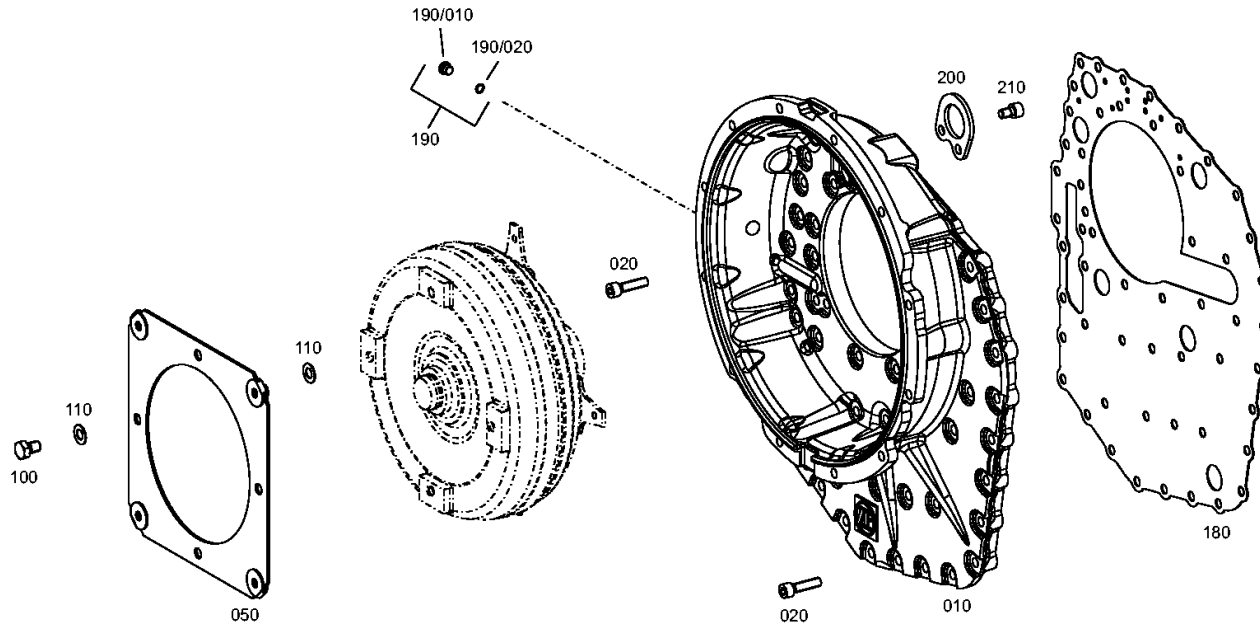
Material number: 4656.063.052

Picture: 465613003900

Material-assembly-group-no: 4656.130.039



3 WG 161 /  
ENGINE CONNECTION





# Picture

Page 1 from 1

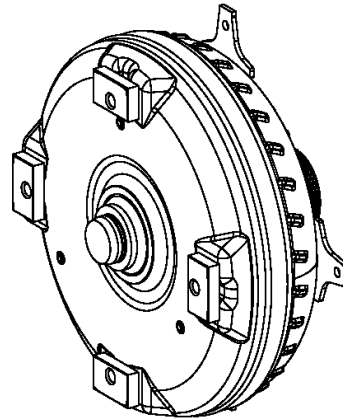
Material number: 4656.063.052

Picture: 416603019800

Material-assembly-group-no: 4166.030.198



3 WG 161 /  
CONVERTER



010

# Picture

Page 1 from 1

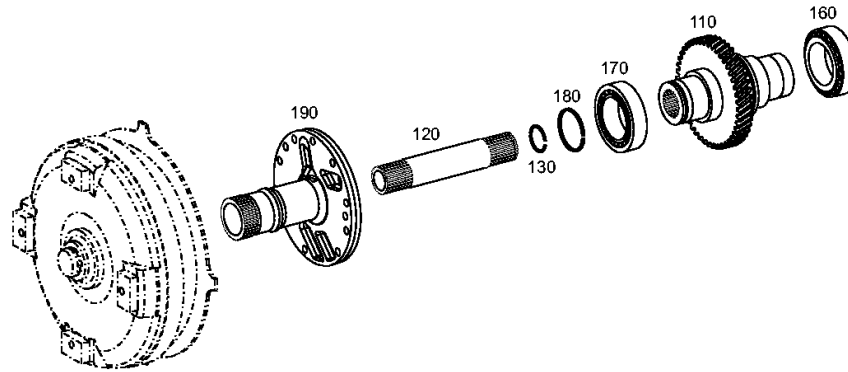
Material number: 4656.063.052

Picture: 465610200600

Material-assembly-group-no: 4656.102.006



3 WG 161 /  
INPUT



# Picture

Page 1 from 2

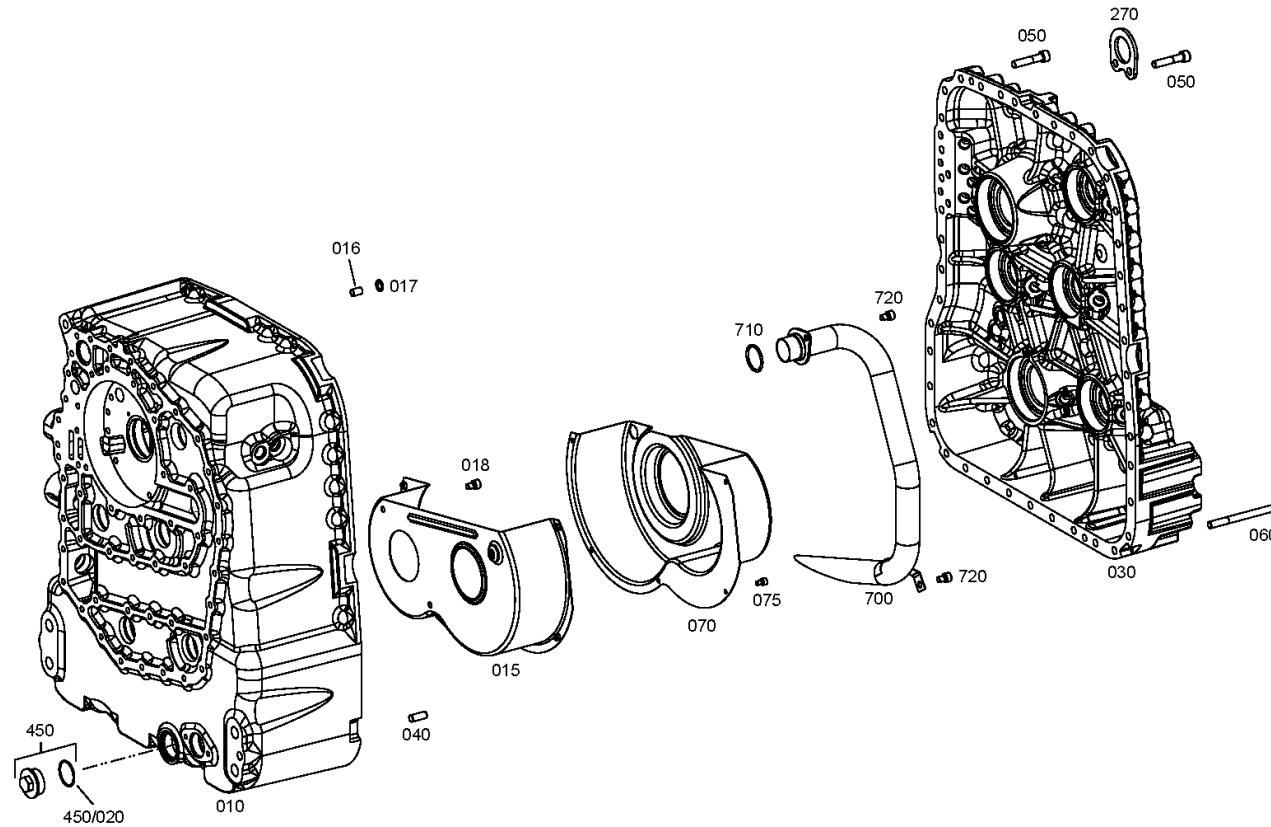
Material number: 4656.063.052

Picture: 465610102801

Material-assembly-group-no: 4656.101.028



3 WG 161 /  
TRANSMISSION HOUSING



# Picture

Page 2 from 2

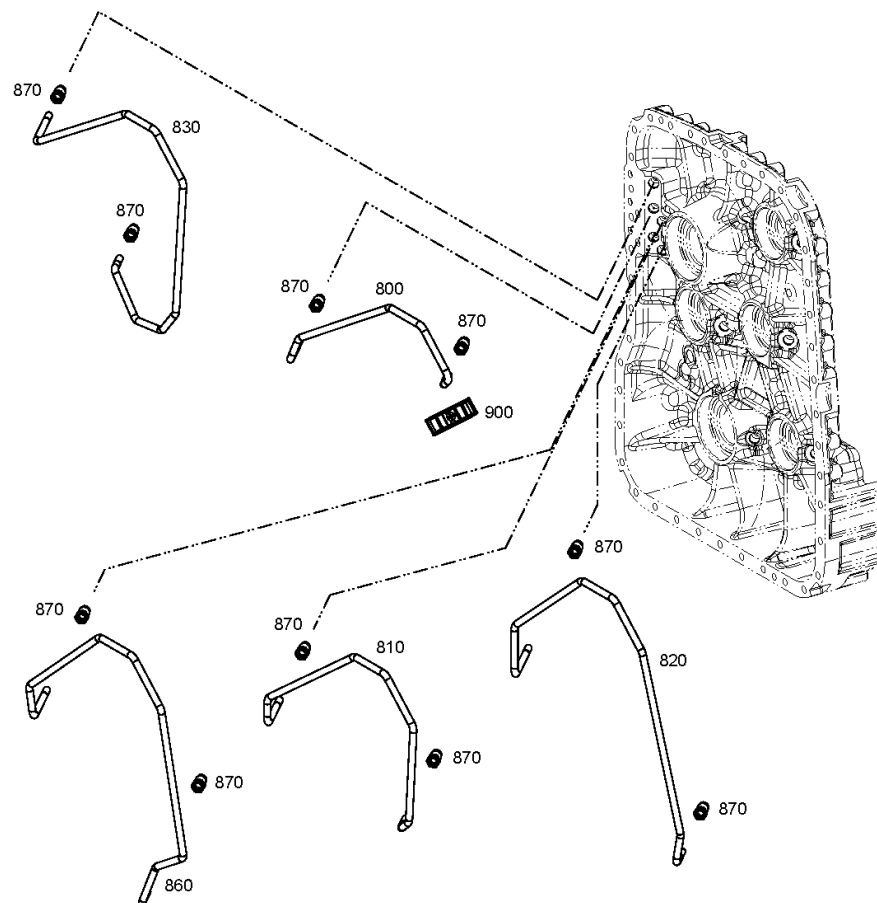
Material number: 4656.063.052

Picture: 465610102802

Material-assembly-group-no: 4656.101.028



3 WG 161 /  
TRANSMISSION HOUSING



# Picture

Page 1 from 1

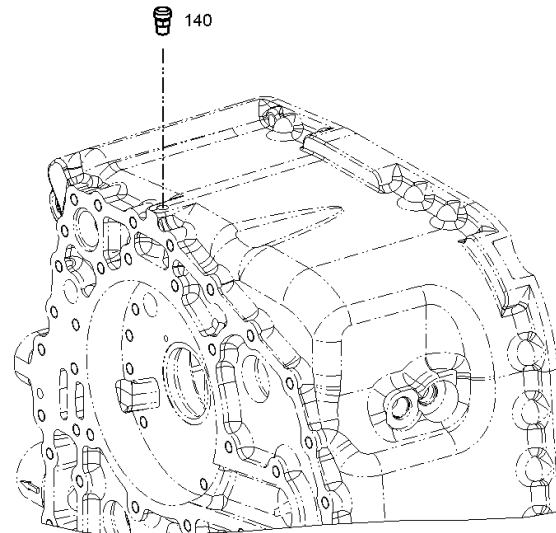
Material number: 4656.063.052

Picture: 465710141300

Material-assembly-group-no: 4657.101.413



3 WG 161 /  
TRANSMISSION HOUSING



# Picture

Page 1 from 1

Material number: 4656.063.052

Picture: 414313900100

Material-assembly-group-no: 4143.139.001



3 WG 161 /  
TYPE PLATE



010

# Picture

Page 1 from 1

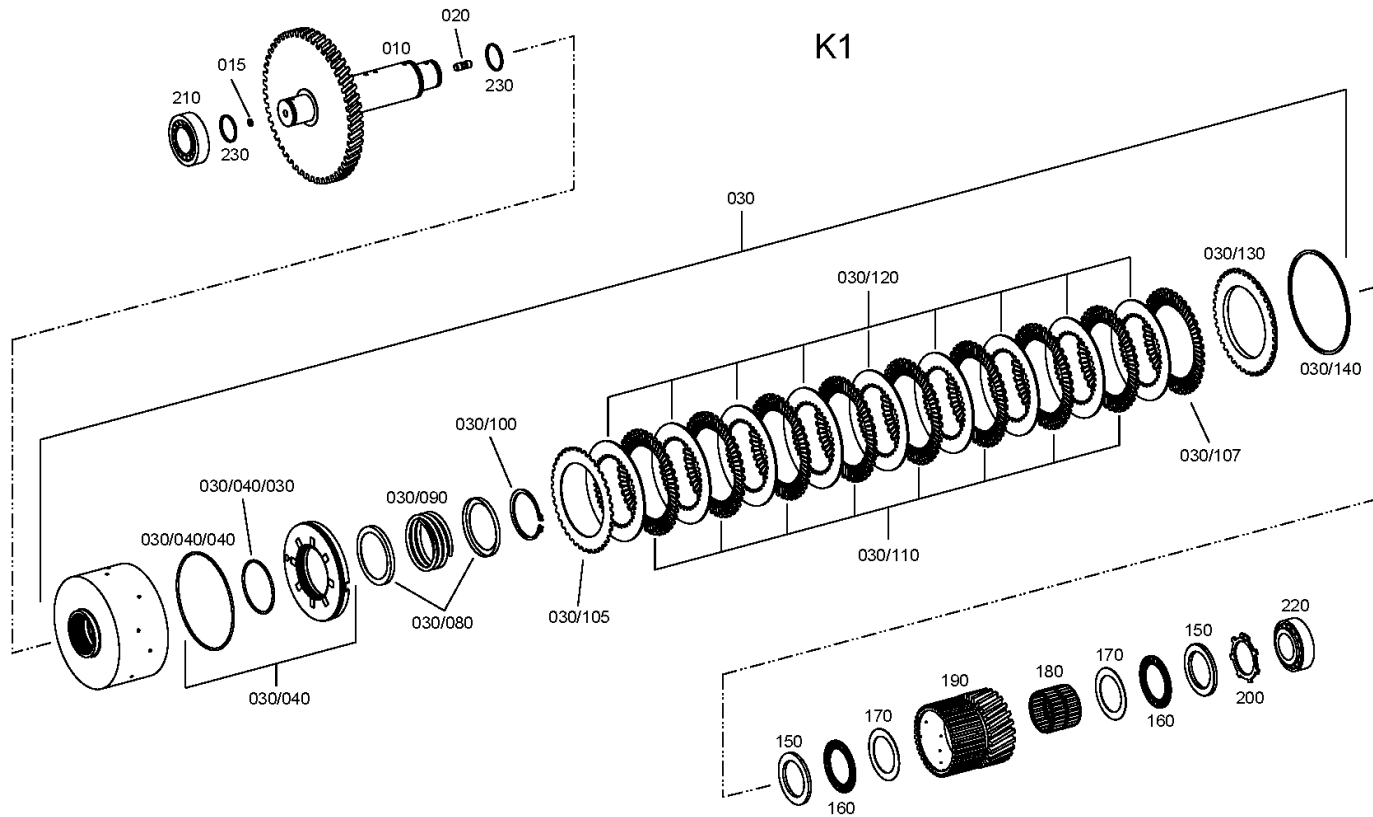
Material number: 4656.063.052

Picture: 465617106400

Material-assembly-group-no: 4656.171.064



3 WG 161 /  
COUPLING



# Picture

Page 1 from 1

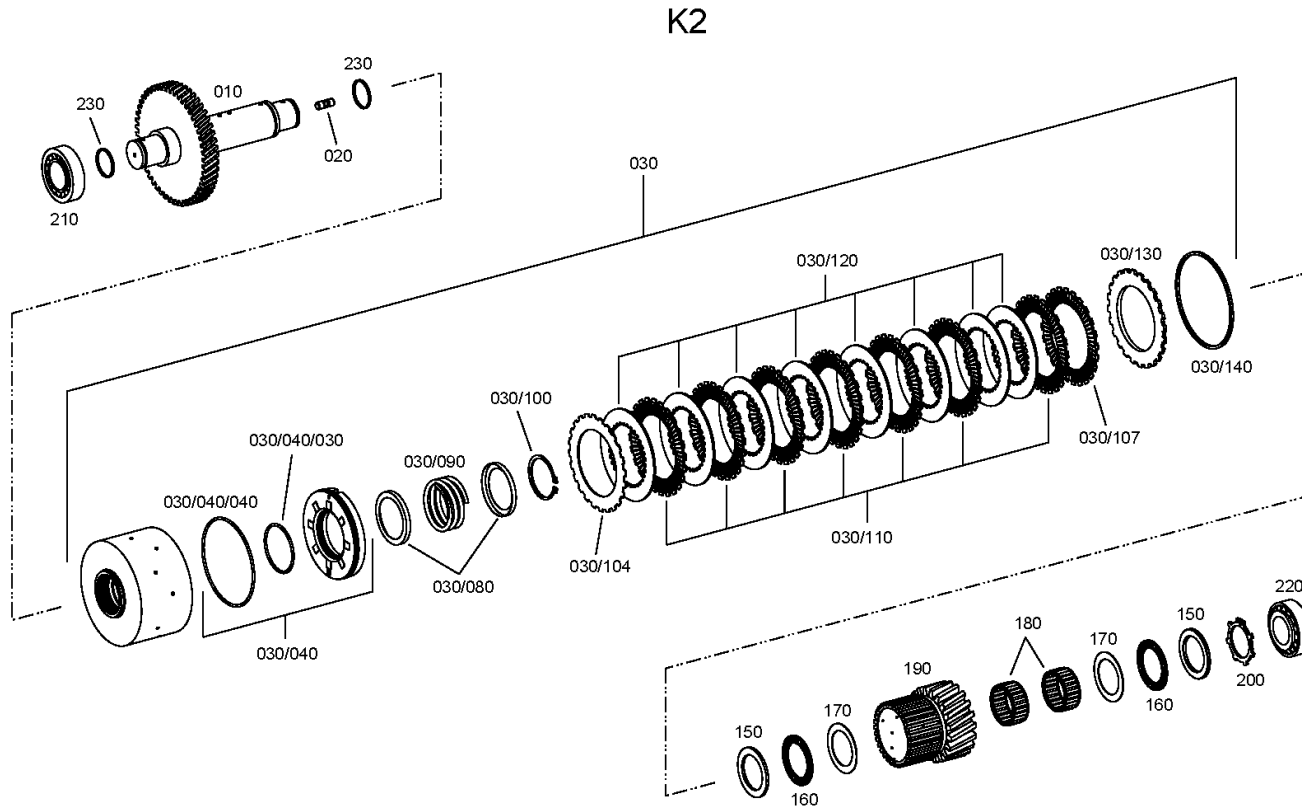
Material number: 4656.063.052

Picture: 465617204400

Material-assembly-group-no: 4656.172.044



3 WG 161 /  
COUPLING





# Picture

Page 1 from 1

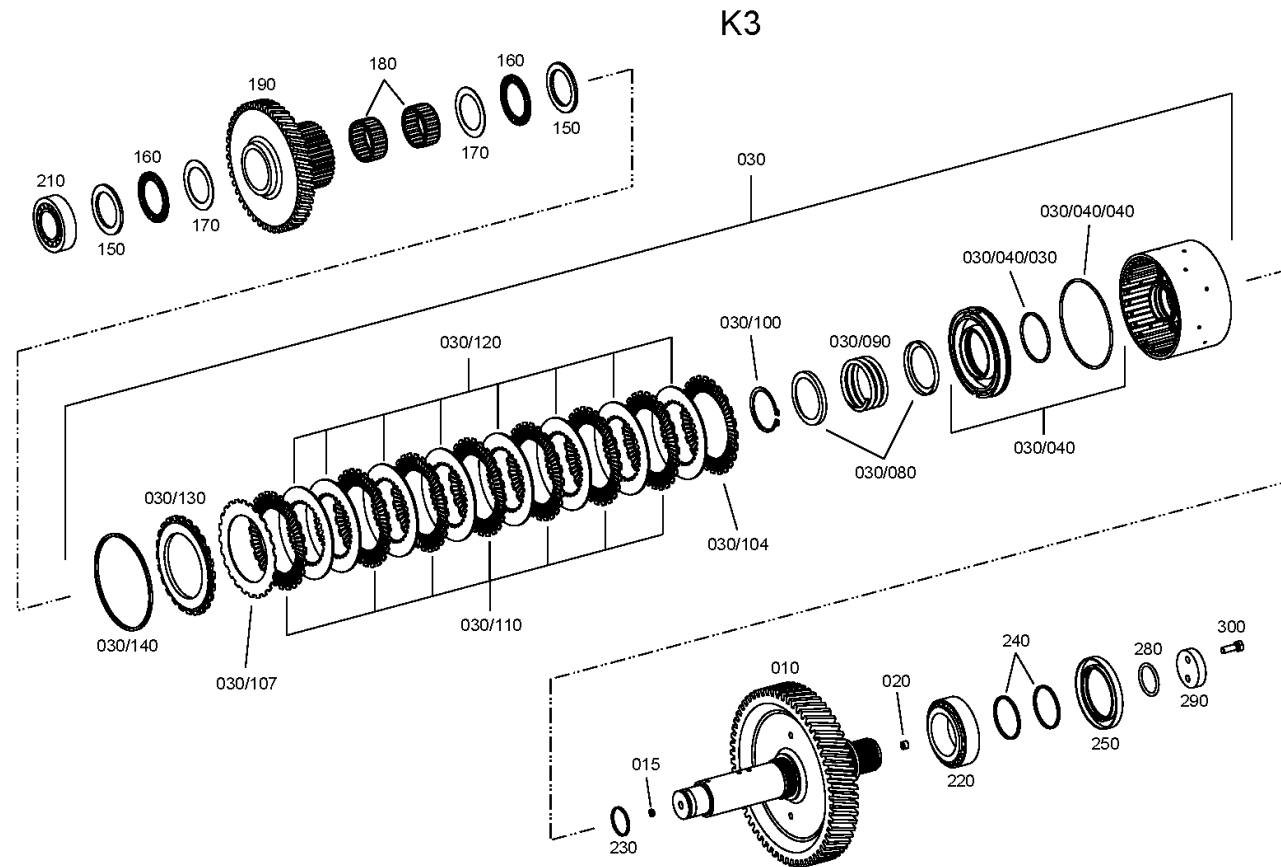
Material number: 4656.063.052

Picture: 465617305400

Material-assembly-group-no: 4656.173.054



3 WG 161 /  
COUPLING



# Picture

Page 1 from 1

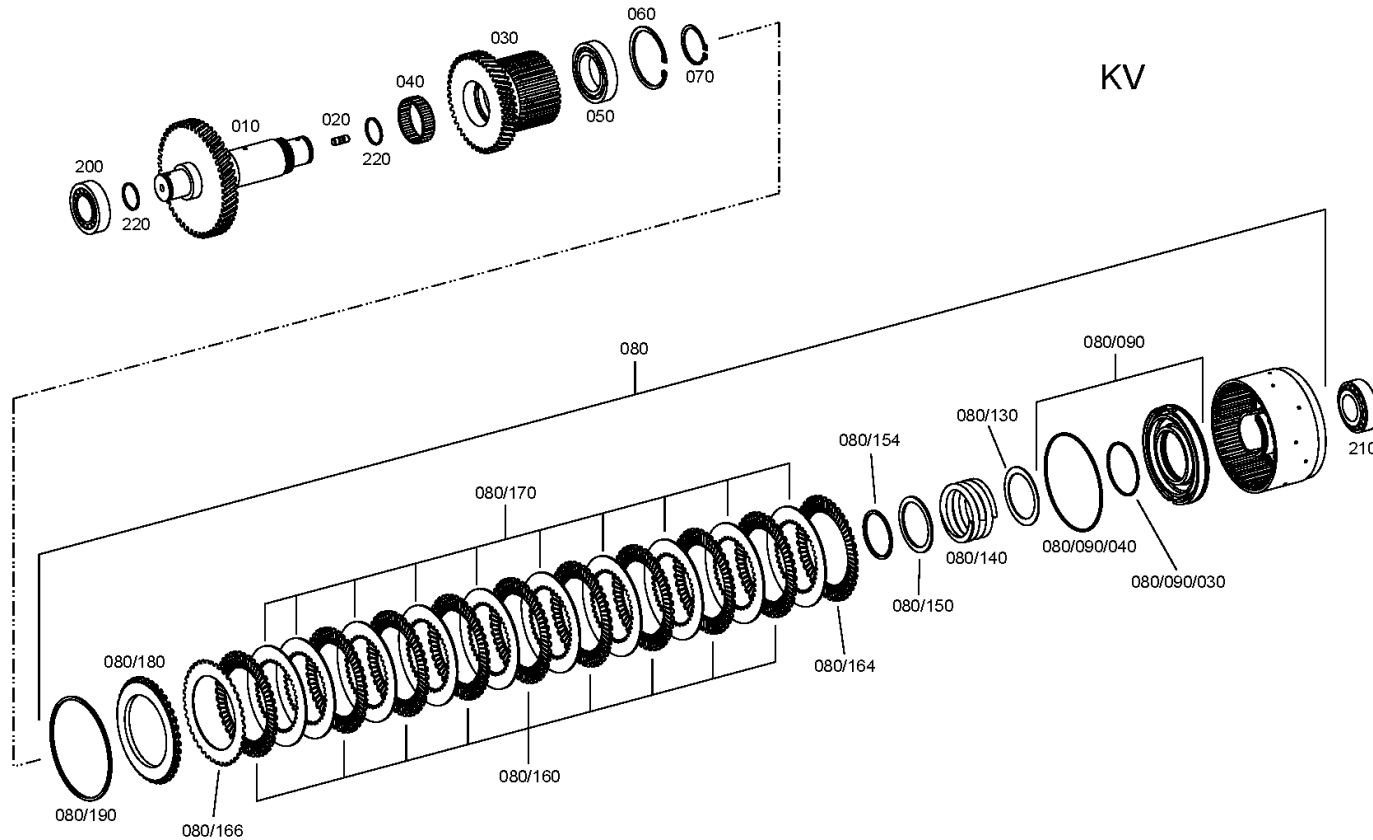
Material number: 4656.063.052

Picture: 465617505100

Material-assembly-group-no: 4656.175.051



3 WG 161 /  
CLUTCH



# Picture

Page 1 from 1

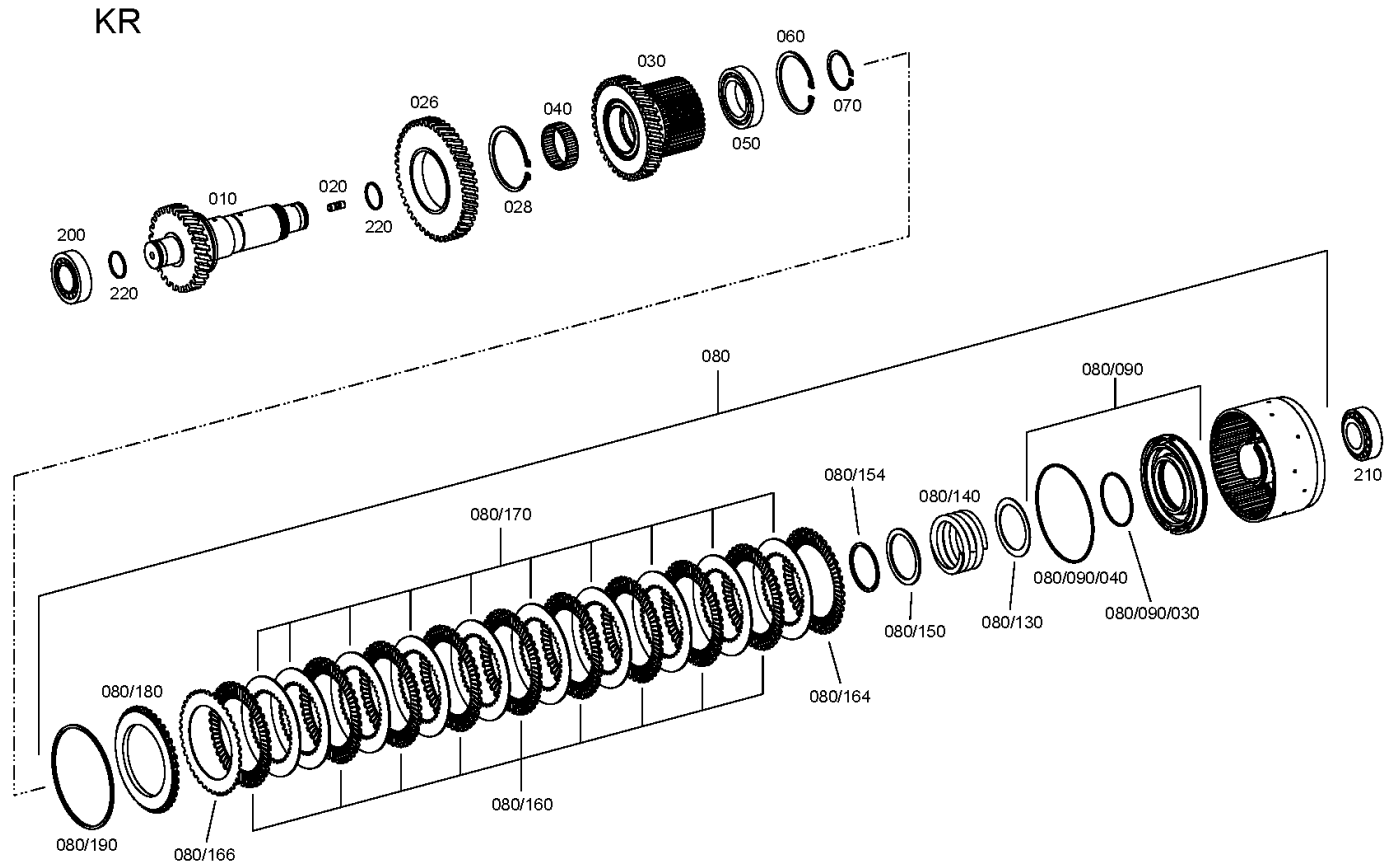
Material number: 4656.063.052

Picture: 465617606300

Material-assembly-group-no: 4656.176.063



3 WG 161 /  
CLUTCH



# Picture

Page 1 from 1

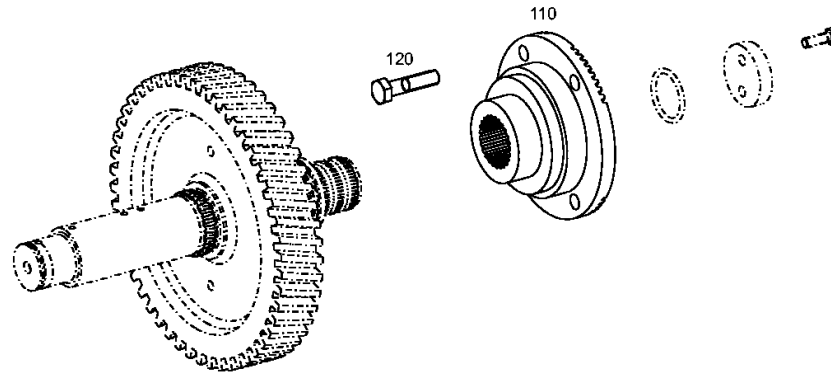
Material number: 4656.063.052

Picture: 465610341700

Material-assembly-group-no: 4656.103.417



3 WG 161 /  
OUTPUT



# Picture

Page 1 from 1

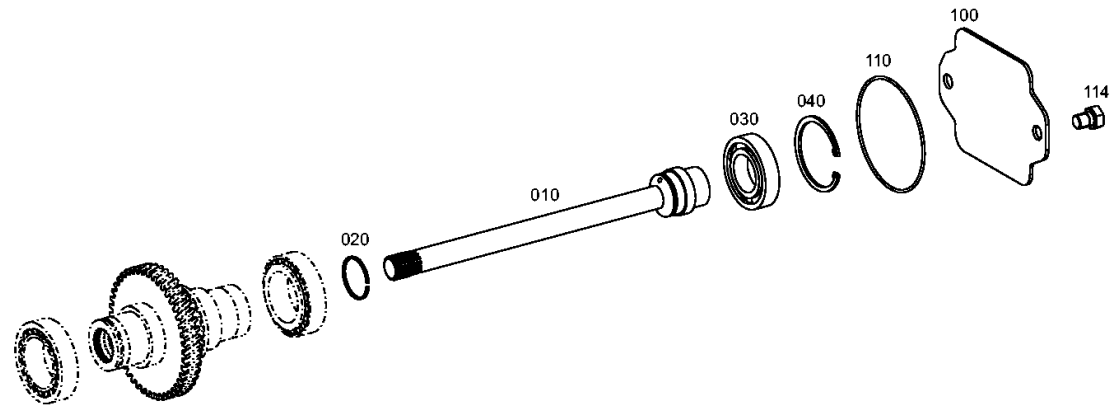
Material number: 4656.063.052

Picture: 465615400800

Material-assembly-group-no: 4656.154.008



3 WG 161 /  
POWER TAKE-OFF



# Picture

Page 1 from 1

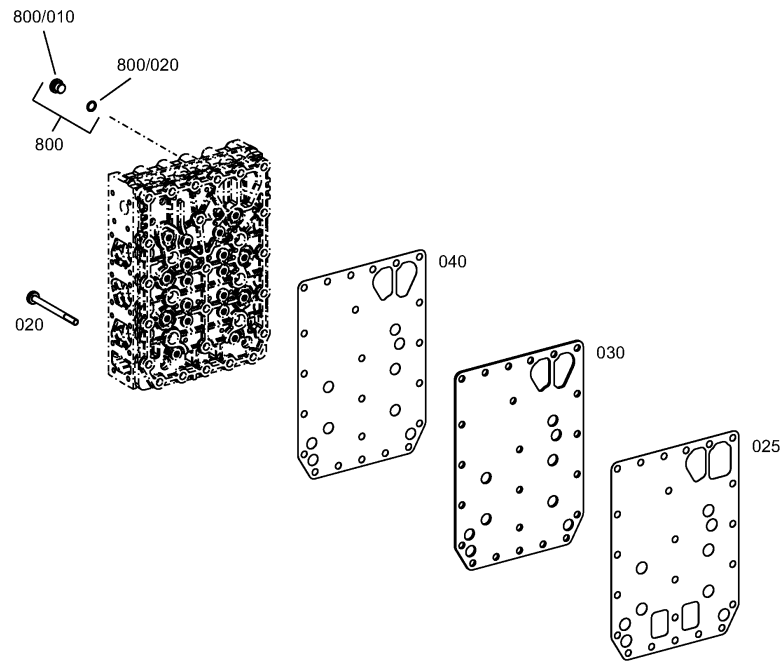
Material number: 4656.063.052

Picture: 465610601400

Material-assembly-group-no: 4656.106.014



3 WG 161 /  
SHIFT SYSTEM



# Picture

Page 1 from 1

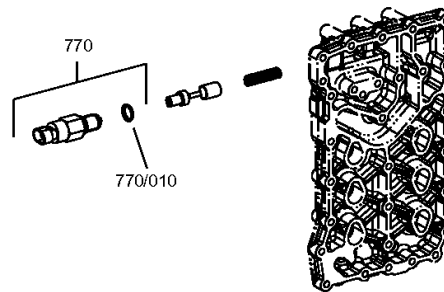
Material number: 4656.063.052

Picture: 465710640760

Material-assembly-group-no: 4657.106.407



3 WG 161 /  
SHIFT SYSTEM



# Picture

Page 1 from 2

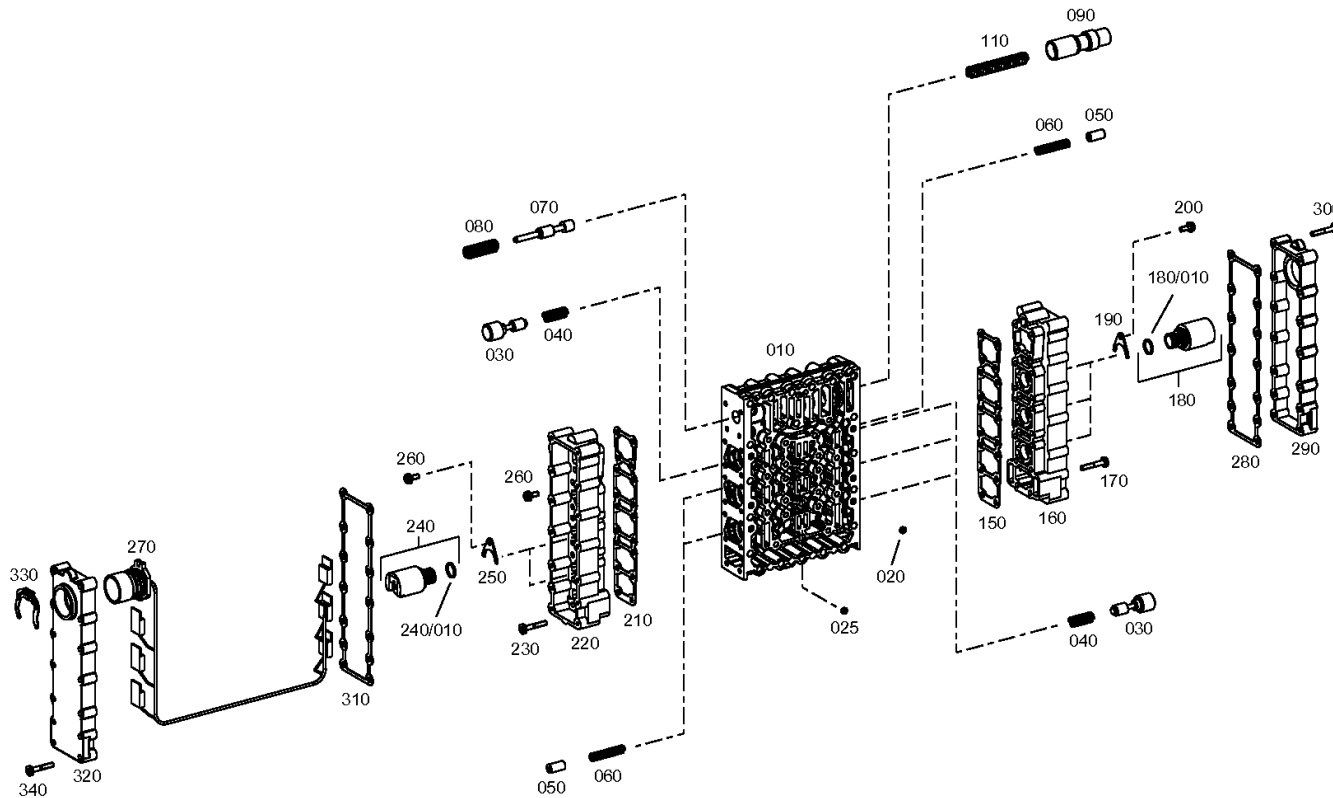
Material number: 4656.063.052

Picture: 465615902361

Material-assembly-group-no: 4656.159.023



3 WG 161 /  
SHIFT SYSTEM





# Picture

Page 2 from 2

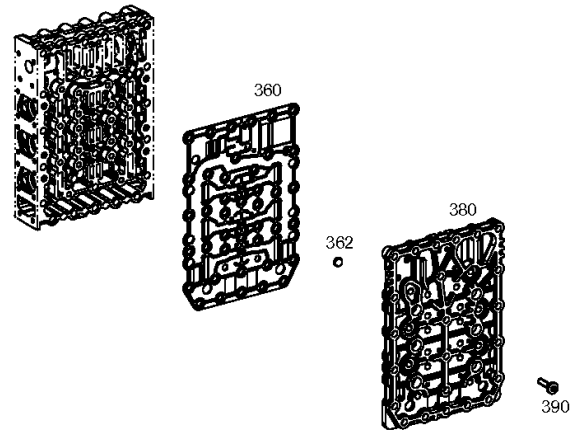
Material number: 4656.063.052

Picture: 465615902362

Material-assembly-group-no: 4656.159.023



3 WG 161 /  
SHIFT SYSTEM



# Picture

Page 1 from 1

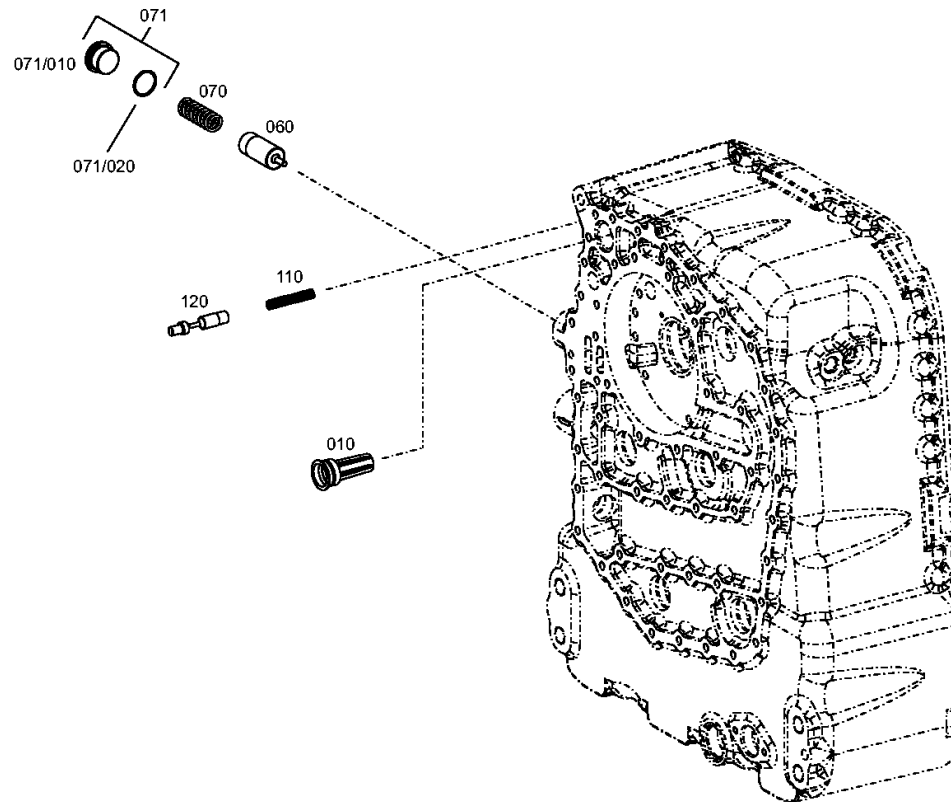
Material number: 4656.063.052

Picture: 465612001200

Material-assembly-group-no: 4656.120.012



3 WG 161 /  
PRESSURE REGULATOR



# Picture

Page 1 from 1

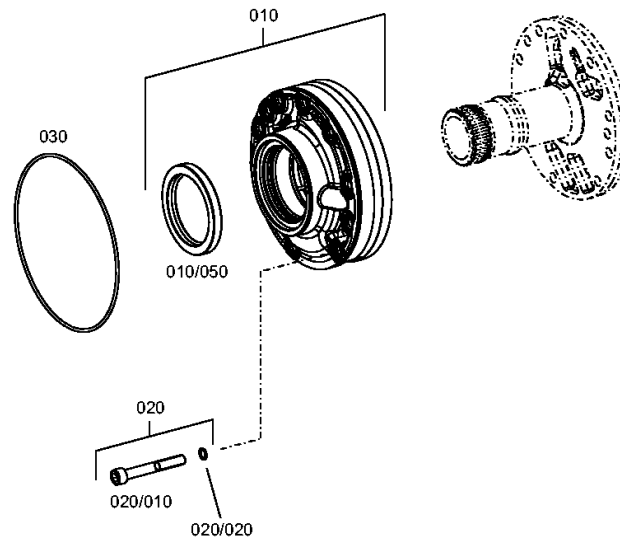
Material number: 4656.063.052

Picture: 465712200500

Material-assembly-group-no: 4657.122.005



3 WG 161 /  
PRESSURE OIL PUMP



# Picture

Page 1 from 1

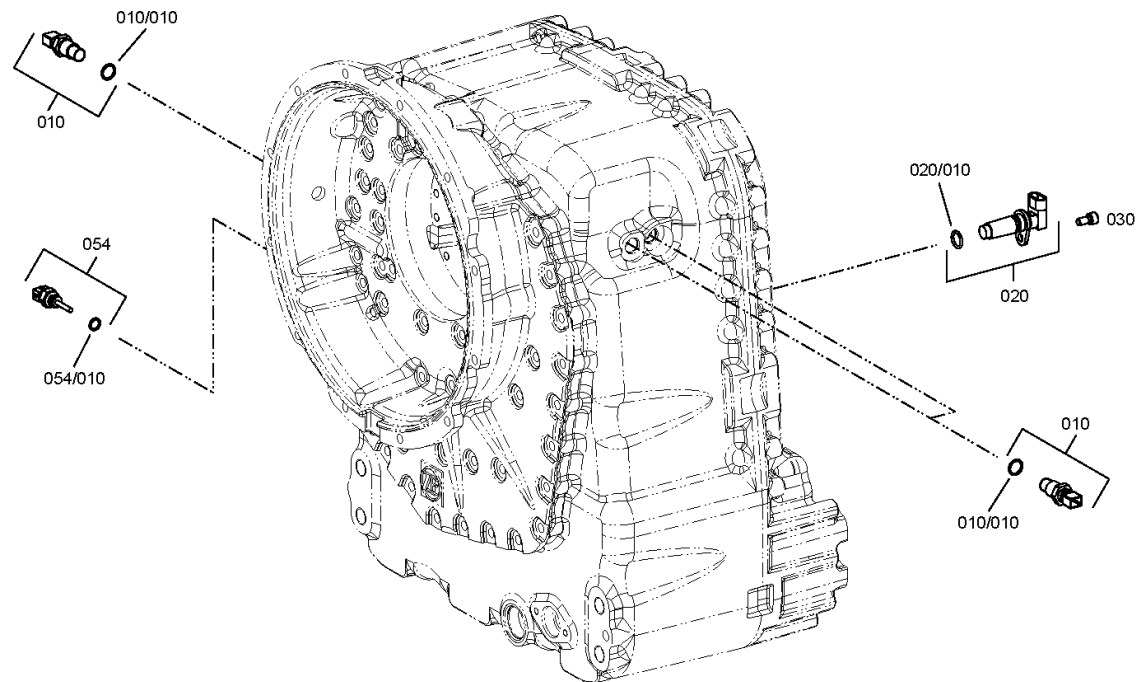
Material number: 4656.063.052

Picture: 465612501000

Material-assembly-group-no: 4656.125.010



3 WG 161 /  
INDUCTIVE SENSOR



# Picture

Page 1 from 1

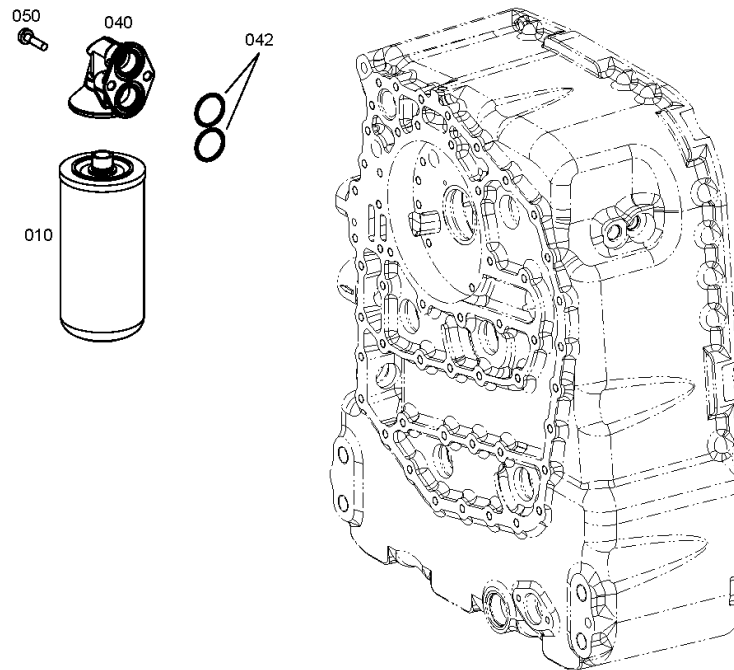
Material number: 4656.063.052

Picture: 465613801700

Material-assembly-group-no: 4656.138.017



3 WG 161 /  
FILTER



# Picture

Page 1 from 1

Material number: 4656.063.052

Picture: 465613101100

Material-assembly-group-no: 4656.131.011



3 WG 161 /  
OIL DIPSTICK

