



Spare Parts Catalog

6 WG 211

Material number: 4657.066.004

Current date: 21.01.2022

ZF Friedrichshafen AG
Hauptverwaltung
80038 Friedrichshafen
Deutschland

Telefon: +49 7541 77-0

Telefax: +49 7541 77-908000

www.zf.com

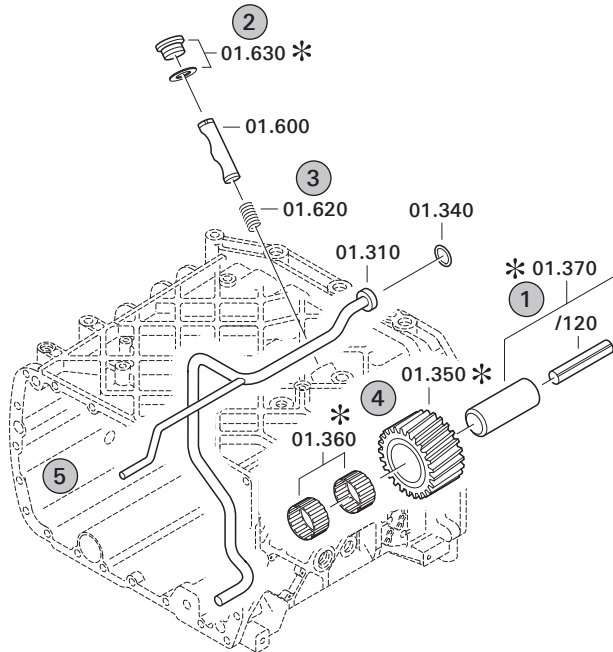
zuständiges Werk:
Passau

Notes relating to the spare parts catalog

Setup of the spare parts catalog

- Cover sheet
- Technical Cover (only in SDM print)
- Overview of figures
- Figure
- Associated parts list
- Next figure
- Associated parts list
- ...

Figure and parts list



Overview of figures

Bildtafel Figure	Sachnummer Product number	Benennung (Description)	Technische Info Technical info	Description (Benennung)	Menge Quantity	Einheit Unit
068.08.17	1316.170.001	AUSLEGER	WL	SHIFT TURRET	1	Stk
068.08.06	1316.170.031	DECKEL	WL*H-H *VM	COVER	1	Stk
068.08.14	1316.170.808	DECKEL	WL*AUSL+GEH*H-H*HF160N	COVER	1	Stk
08	1316.170.441	ANSCHLUSSTEILE	WL*NG-VORB*RG-SCHL*168N *BAJONETT	CONNECTING PARTS	1	Stk

The "gap" indicates that there is no separate graphics panel (poster) for this assembly
 The parts of this assembly are shown with the same mid-section number on the figure

1 Positions and subpositions

Pos.	Sachnummer Product number	Benennung (Description)	Technische Info Technical info	Description (Benennung)	Menge Quantity	Einheit Unit
0370	1315.201.054	RUECKLAUFBOLZEN	KPL.16S151*SG*L= 79	REV.IDLER SHAFT	1	Stk
/0120	0631.329.293	SPANNSTIFT		SLOT. PIN	1	Stk

Positions marked with "/" are the individual items of a completion
 For example: Position 0370 contains a centering pin with the position /0120

2 Combinations with standardized parts

Pos.	Sachnummer Product number	Benennung (Description)	Technische Info Technical info	Description (Benennung)	Menge Quantity	Einheit Unit
0630		VERSCHL.SCHR.		SCREW PLUG	1	Stk
	0636.302.067	VERSCHL.SCHR.		SCREW PLUG	1	Stk
	0634.801.249	DICHTRING	A 26 X 31	SEALING RING	1	Stk

The parts list shows the components included in the combination of standardized parts

3 Depiction of position/item number on the figure and in the parts list

01.620 - on the figure 01 relates to the assembly in which the position is included. Due to program-related reasons, it is shown on the figure.

0620 - in the parts list

Pos.	Sachnummer Product number	Benennung (Description)	Technische Info Technical info	Description (Benennung)	Menge Quantity	Einheit Unit
0620	0732.040.736	DRUCKFEDER		COMPRESSION SPRING	1	Stk

4 *-Positions

Positions marked with an * are optional i.e. inclusion in the parts list is not mandatory.
 The following note is shown on the figure

je nach Stücklistenausführung
 depending on spec. number
 * suivant la nomenclature
 secondo la distinta base

5 Parts, dotted display

Parts with dotted display on the figure are only used for orientation of other parts

Technical Cover

Page 1 from 3

Material number: 4657.066.004



6 WG 211 /

Pos.	Information	Amendment number
	CUSTOMER:FA. TERBERG	
	IDENT-NO.: 15012769	
	PROJECT-NO.: 49311	
	VEHICLE DATA:	
	RORO TRACTOR YT 222	
	VEHICLE WEIGHT: EMPTYT	
	VEHICLE WEIGHT: LOADED 42,00T	
	ENGINE: MB OM 906 LA	
	ENGINE POWER: P=205 KW TO N=2300 UPM	
	ENGINE PERFORM.ACC.TO TRACTIVE EFFORT CALCUL.	
	INPUT TORQUE: T=1100 NM TO N=1300 UPM	
	TYRES: 11.00 R 22,5	
	R.DYN. 0,511	
	AXLE RATIO: I TOTAL= 16,33	
	MAX.SPEED: 30 KM/H	
	PRODUCT DESCRIPTION:	
	TYPE: 6WG-211	
	RATIOS TOTAL:	
	FORWARD:	
	1.G=5,683 2.G=3,702 3.G=2,304 4.G=1,501	
	5.G=0,963 6.G=0,627	
	REVERSE:	
	1.G=5,041 2.G=2,044 3.G=0,854	
	INPUT:	
	SAE 3	
	OUTPUT:	
	FLANGE: BRAKE SIDE D=150/70GRD KR.VZ. 4XM12X1,5X45	
	POWER TAKE-OFF(P.T.O):	
	VERSION: 1.P.T.O.: SAE-C 2/4 PERFOR.	
	GEAR SELECTION: HSG 94	
	MOUNTING POSIT.: REAR AT THE GEARBOX	
	VOLTAGE: 24 VOLT	
	OPERATING PRES.: 16+2 BAR	

Technical Cover

Page 2 from 3

Material number: 4657.066.004



6 WG 211 /

Pos.	Information	Amendment number
	CONNECTION WIRING: SCREW CONNECTION	
	CONVERTER LOCK-UP CONTROL: WITH	
	OPERATING PRESSURE: 15+1BAR	
	SETTING SPECIFICATION: 4657 700 042	
	PR.DIFF.SWITCH: WITH	
	WARNING SWITCH F.OIL TEMPERATURE: WITH	
	WIRING: WITHOUT	
	INDUCTIVE SENSOR TURB.SPEED: Z=70	
	INDUCT.SENS.INTERMEDIATE GEAR TRAIN: Z=55	
	INDUCTIVE SENSOR ENGINE-SPEED: Z= 4	
	HALL-SENSOR ABTRIEBSDREHZAHL : Z=47	
	PARKING BRAKE: WITHOUT	
	SPEEDOMETER: ELECTRICAL	
	OIL DIPSTICK: GEARBOX REAR SIDE	
	ZF-FILTER: BOLTED ON	
	T-CONVERTER:	
	DESIGNATION: 34 H 126	
	CHARACTERISTICS: 118 350	
	START.TORQUE RAT.: 2,24	
	STATOR FREEWHEEL: WITH	
	BREAK FREEWHEEL: WITHOUT	
	LOCK-UP CLUCH: WITH	
	GROUND DRIV.PUMP: WITHOUT	
	FOERDERMENGE: OHNE	
	DRAWINGS:	
	SECT.DRAWING: 4657 500 201	
	SECT.DRAWING:	
	INST.DRAWING: 4657 666 004	
	ENGINE MOUNT: 4657 500 221	
	TRANSM.DIAGR: 4657 700 155	
	OIL-DIAGRAM: 4657 700 129	
	DISC SET:	
	AENSOR-DK: 4168 034 123 ()	

Technical Cover

Page 3 from 3

Material number: 4657.066.004



6 WG 211 /

Pos.	Information	Amendment number
	CALCULATIONS:	
	CALCULATIONS:	
	TR.FORCE DIAGRAM: 4657 706 864	
	ASSEMBLY-GUIDELINE: 4657 700 079	
	DRAWING FOR ELECTR.PARTS	
	RANGE SELECTOR: 6006 630 026	
	CIRCUIT DIA.: 6006 700 582	
	DISPLAY 6007 603 047	
	CONTROL UNIT: 6009 665 002(1)	
	WIRING DIAGR.: SEE SOFTWARE CONTROL DOCUMENT	
	CONNECT.DIAGR.: SEE SOFTWARE CONTROL DOCUMENT	
	OIL CAPACITY:	
	TOTAL: 27,00L	
	OIL FILLING: NO	
	OIL GRADE:SPECIFICATION TE ML 03 / TRANSMISSION	
	WEIGHT: 490KG	
	COLOR: 6 ANTHRAZITGRAU RAL 7016	
	PACKING:	
	COMPONENTS OF THIS ASSEMBLY WITHOUT ASBESTOS	
	IDENT-NO.IN TYPE-PLATE INCLUDED	
	SEPARATE ORDER FOR ELECTR.PARTS	
	EST-37A SEE SOFTWARE CONTROL COCUMENT 002000012944	
	RANGE SELECTOR DW-3 0501 216 205	
	DISPLAY 0501 211 422	
	*	

Assembly group overview

Page 1 from 2

Material number: 4657.066.004



6 WG 211 /

Graphics	Pos.	Material number	Name	Quantity	Amend. no.	Techn. Info.
465713007100	150	4657.130.071	ENGINE CONNECTION	1		
416603417600	260	4166.034.176	CONVERTER	1		
465710202200	30	4657.102.022	INPUT	1		
465710104901	10	4657.101.049	TRANSMISSION HOUSING	1		
465710140800	20	4657.101.408	TRANSMISSION HOUSING	1		
414313900100	15	4143.139.001	TYPE PLATE	1		
465717103600	190	4657.171.036	COUPLING	1		
465717202700	200	4657.172.027	COUPLING	1		
465717302400	210	4657.173.024	CLUTCH	1		
465717404800	220	4657.174.048	CLUTCH	1		
465717501800	230	4657.175.018	CLUTCH	1		
465717602100	240	4657.176.021	CLUTCH	1		
465710301600	40	4657.103.016	OUTPUT	1		
465710341100	50	4657.103.411	OUTPUT	1		
465715401700	180	4657.154.017	POWER TAKE-OFF	1		
465710601400	60	4657.106.014	SHIFT SYSTEM	1		

Assembly group overview

Page 2 from 2

Material number: 4657.066.004



6 WG 211 /

Graphics	Pos.	Material number	Name	Quantity	Amend. no.	Techn. Info.
465710640760	70	4657.106.407	SHIFT SYSTEM	1		
465615901861	80	4656.159.018	SHIFT SYSTEM	1		
465712301700	120	4657.123.017	CONTROL UNIT	1		
465712000500	100	4657.120.005	PRESSURE REGULATOR	1		
465712200500	110	4657.122.005	PRESSURE OIL PUMP	1		
465712501280	140	4657.125.012	INDUCTIVE SENSOR	1		
465712400150	130	4657.124.001	TEMPERATURE SENSOR	1		
465613801750	170	4656.138.017	FILTER	1		
465713101550	160	4657.131.015	FILLER NOZZLE	1		

Plant

Page 1 from 1

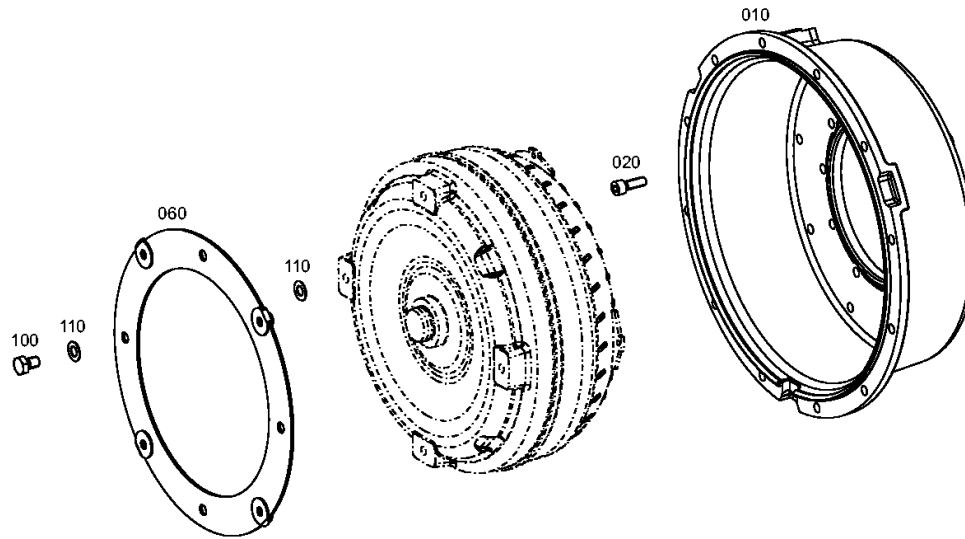
Material number: 4657.066.004

Plant: 465713007100

Material-assembly-group-no: 4657.130.071



6 WG 211 /
ENGINE CONNECTION



Plant

Page 1 from 1

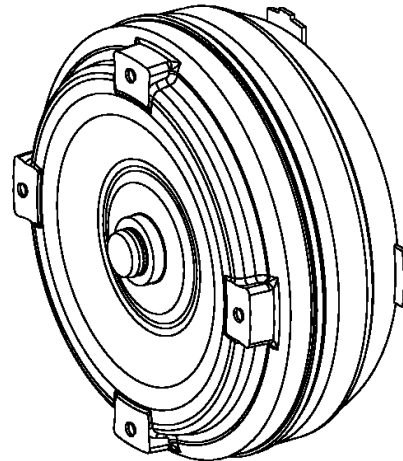
Material number: 4657.066.004

Plant: 416603417600

Material-assembly-group-no: 4166.034.176



6 WG 211 /
CONVERTER



010

Plant

Page 1 from 1

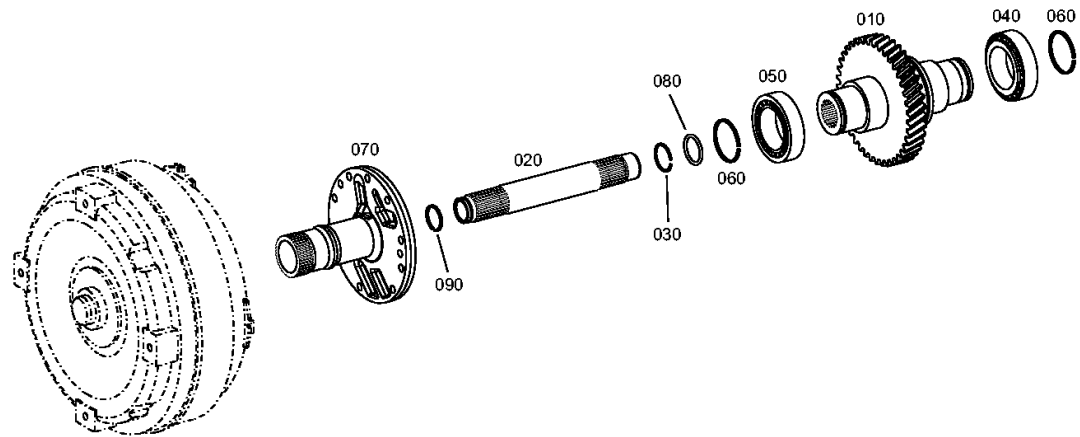
Material number: 4657.066.004

Plant: 465710202200

Material-assembly-group-no: 4657.102.022



6 WG 211 /
INPUT



Plant

Page 1 from 2

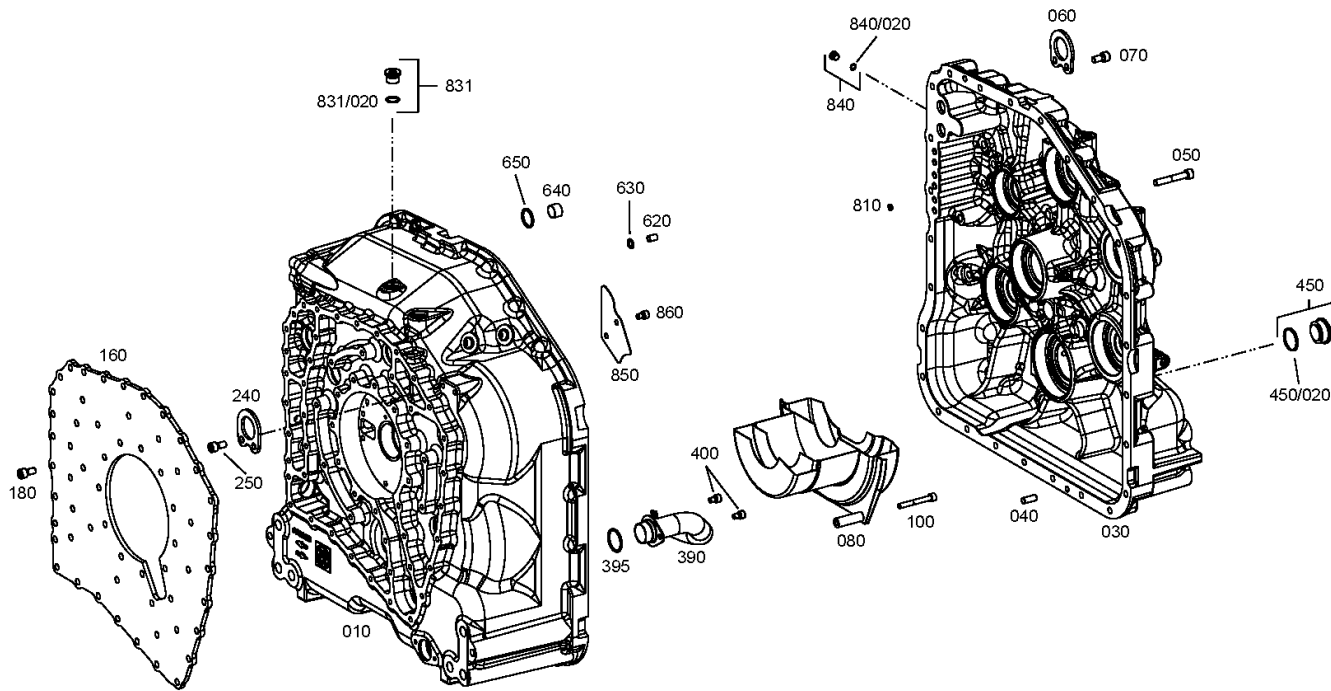
Material number: 4657.066.004

Plant: 465710104901

Material-assembly-group-no: 4657.101.049



6 WG 211 /
TRANSMISSION HOUSING



Plant

Page 2 from 2

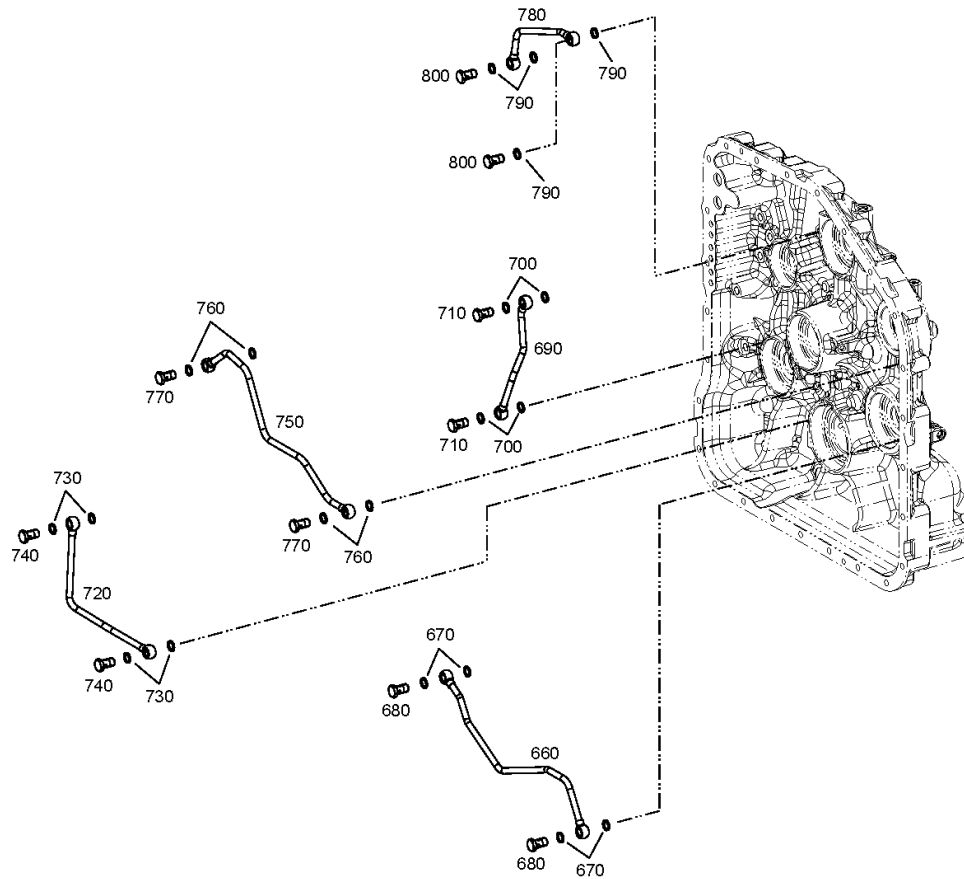
Material number: 4657.066.004

Plant: 465710104902

Material-assembly-group-no: 4657.101.049



6 WG 211 /
TRANSMISSION HOUSING



Plant

Page 1 from 1

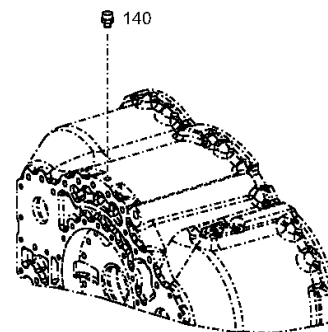
Material number: 4657.066.004

Plant: 465710140800

Material-assembly-group-no: 4657.101.408



6 WG 211 /
TRANSMISSION HOUSING



Plant

Page 1 from 1

Material number: 4657.066.004

Plant: 414313900100

Material-assembly-group-no: 4143.139.001



6 WG 211 /
TYPE PLATE



010

Plant

Page 1 from 1

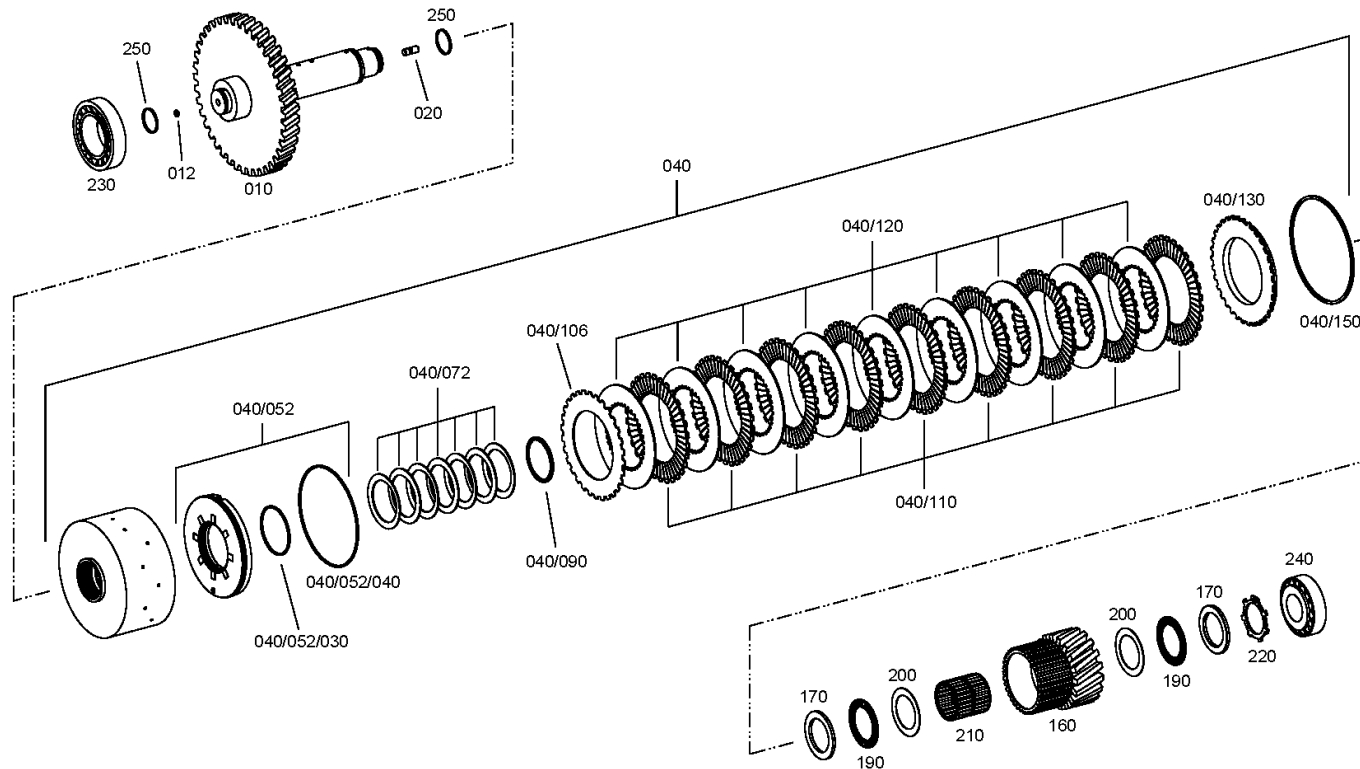
Material number: 4657.066.004

Plant: 465717103600

Material-assembly-group-no: 4657.171.036



6 WG 211 /
COUPLING



Plant

Page 1 from 1

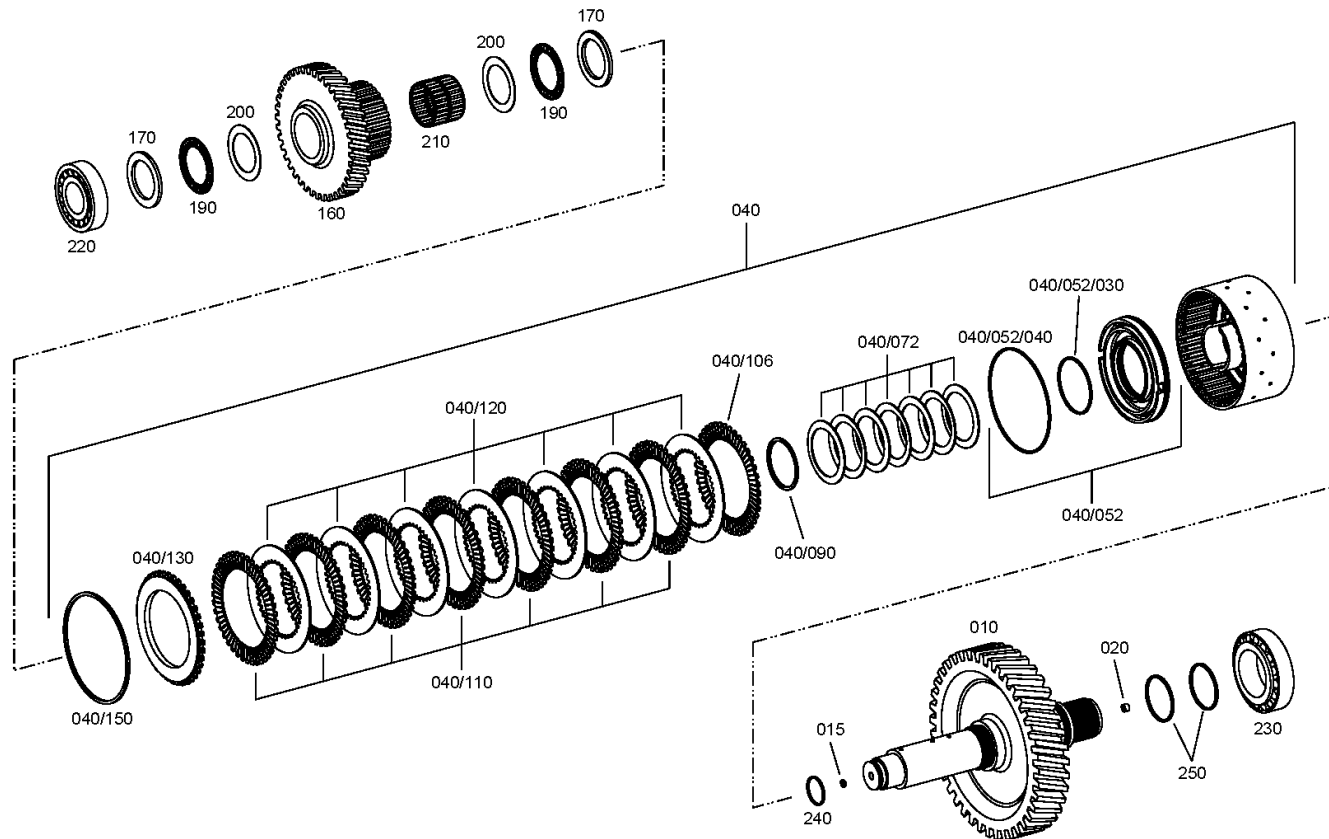
Material number: 4657.066.004

Plant: 465717302400

Material-assembly-group-no: 4657.173.024



6 WG 211 /
CLUTCH



Plant

Page 1 from 1

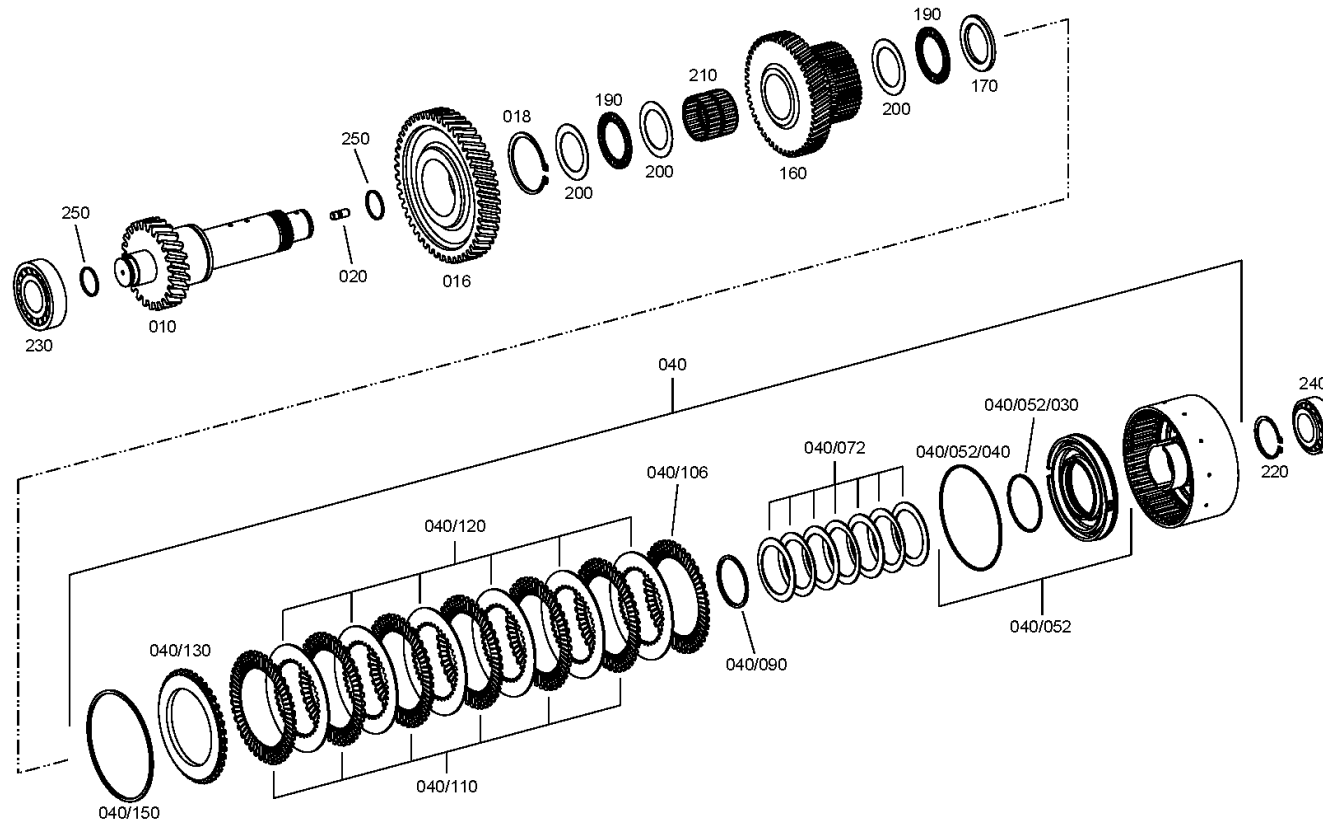
Material number: 4657.066.004

Plant: 465717404800

Material-assembly-group-no: 4657.174.048



6 WG 211 /
CLUTCH



Plant

Page 1 from 1

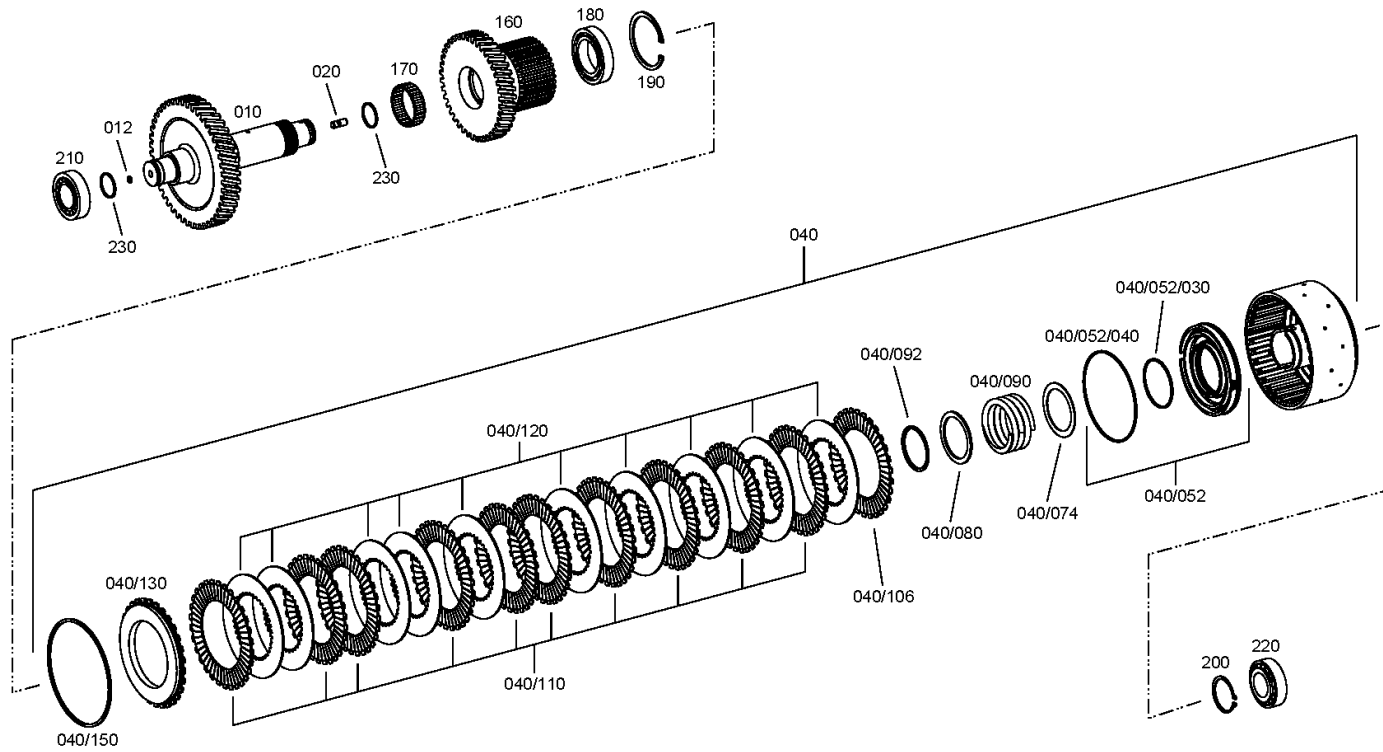
Material number: 4657.066.004

Plant: 465717501800

Material-assembly-group-no: 4657.175.018



6 WG 211 /
CLUTCH



Plant

Page 1 from 1

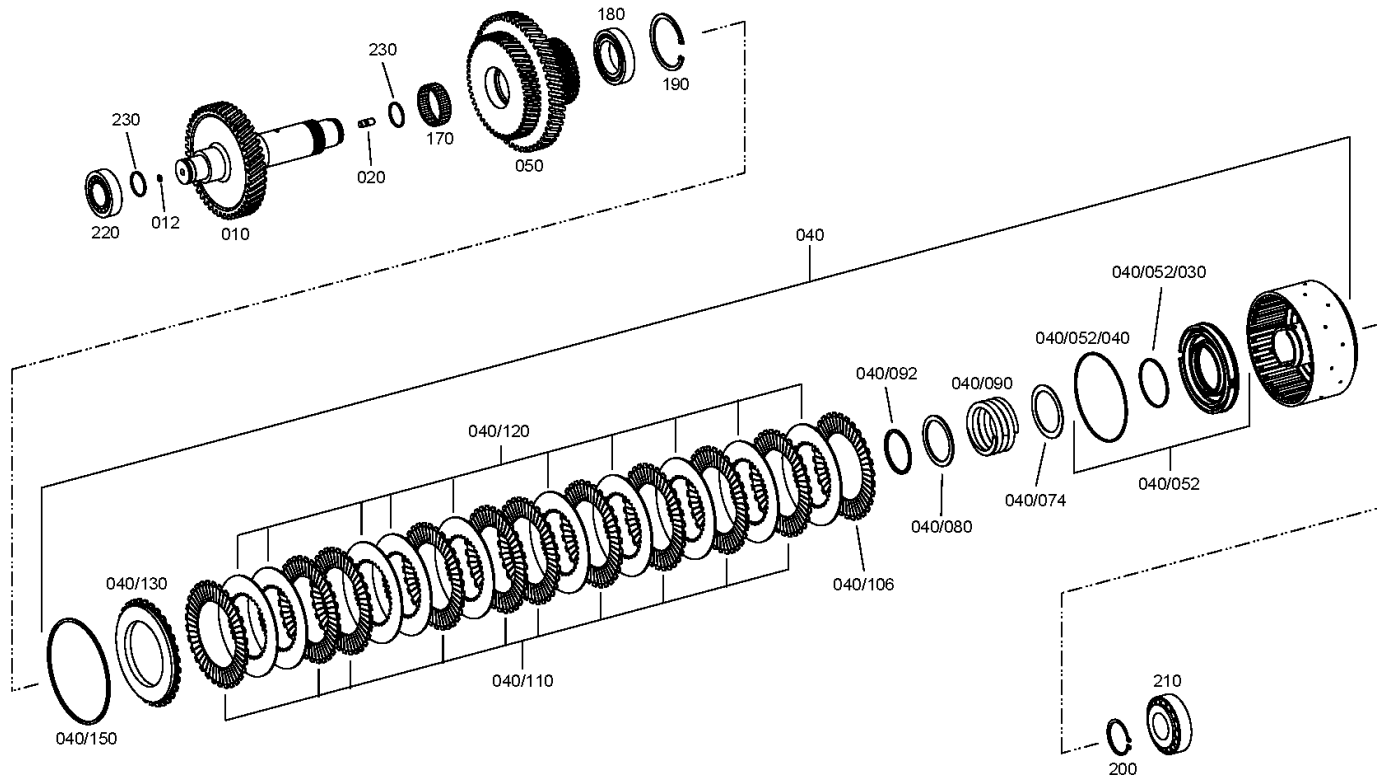
Material number: 4657.066.004

Plant: 465717602100

Material-assembly-group-no: 4657.176.021



6 WG 211 /
CLUTCH



Plant

Page 1 from 1

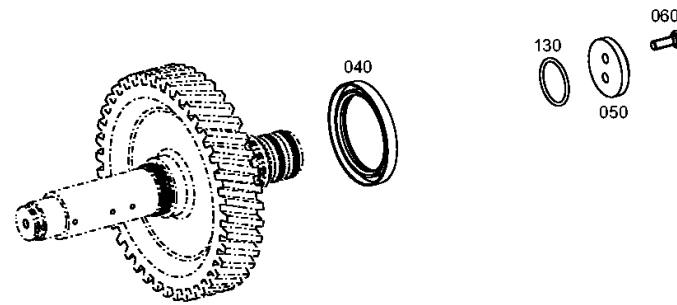
Material number: 4657.066.004

Plant: 465710301600

Material-assembly-group-no: 4657.103.016



6 WG 211 /
OUTPUT



Plant

Page 1 from 1

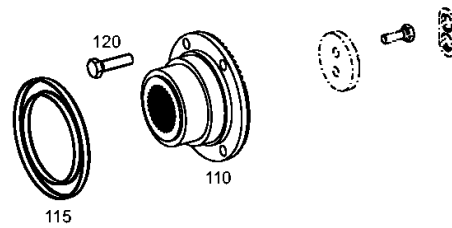
Material number: 4657.066.004

Plant: 465710341100

Material-assembly-group-no: 4657.103.411



6 WG 211 /
OUTPUT



Plant

Page 1 from 1

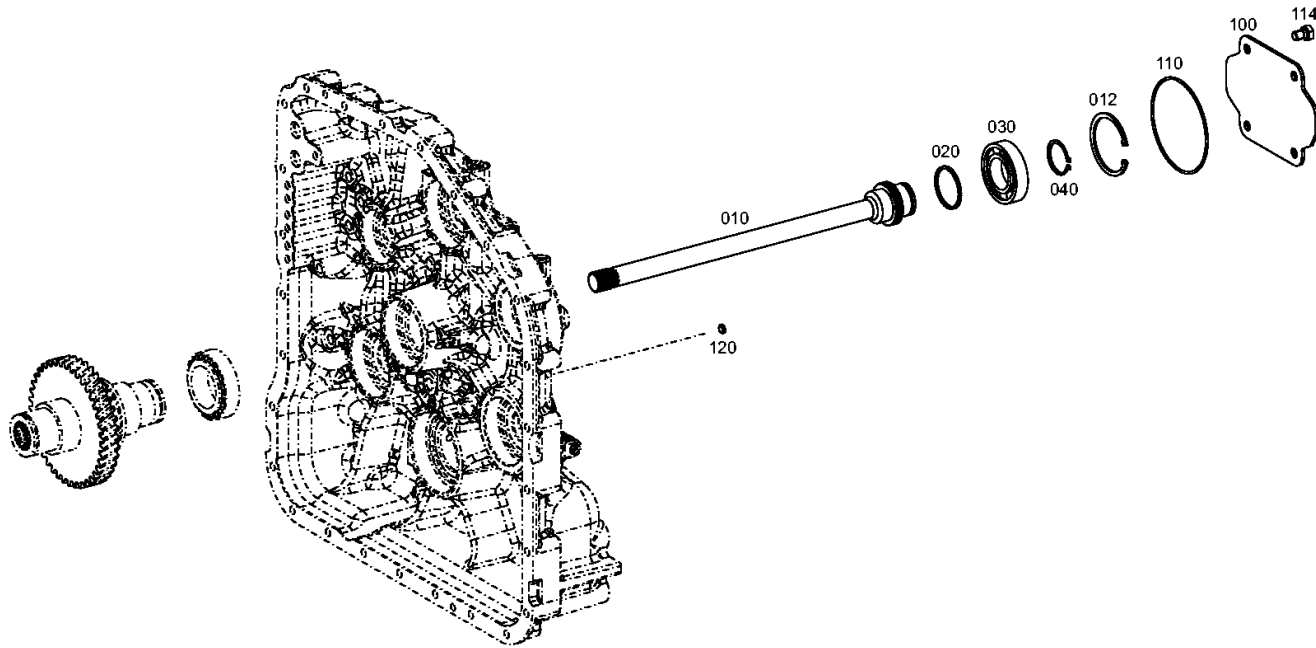
Material number: 4657.066.004

Plant: 465715401700

Material-assembly-group-no: 4657.154.017



6 WG 211 /
POWER TAKE-OFF



Plant

Page 1 from 1

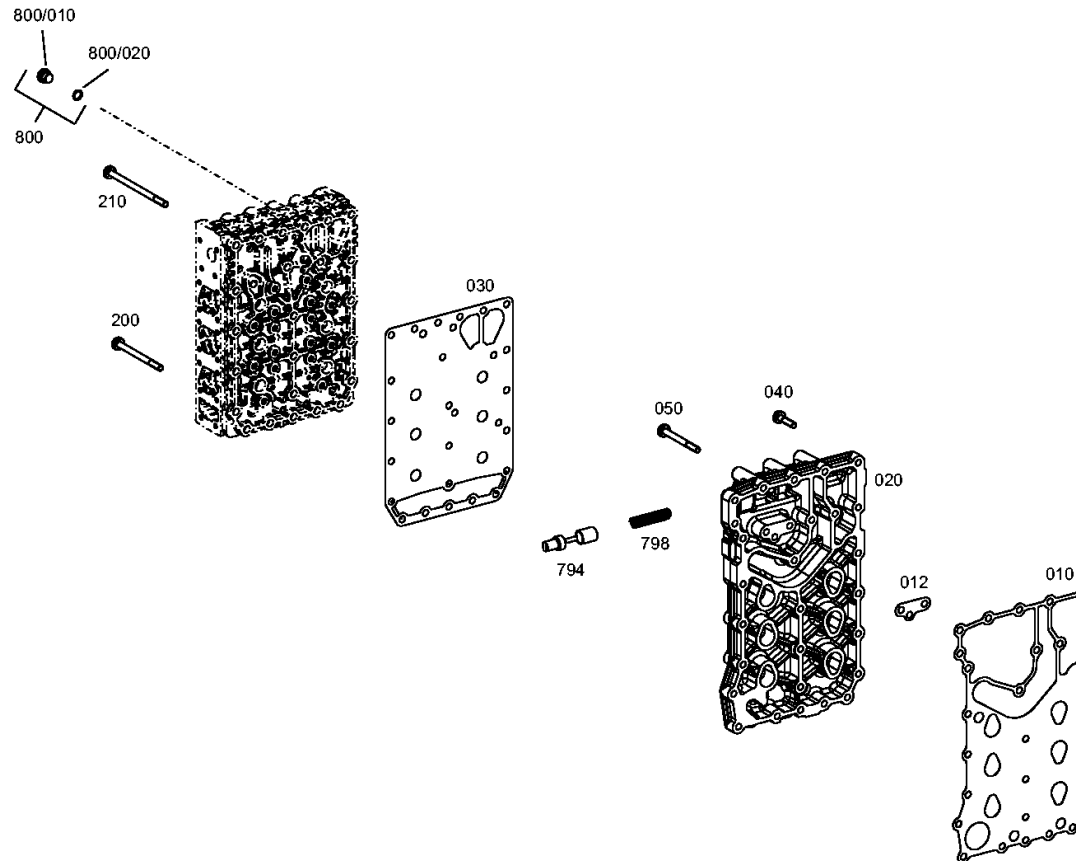
Material number: 4657.066.004

Plant: 465710601400

Material-assembly-group-no: 4657.106.014



6 WG 211 /
SHIFT SYSTEM



Plant

Page 1 from 1

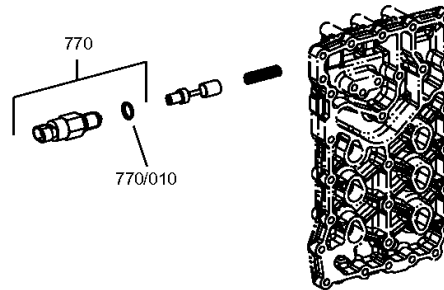
Material number: 4657.066.004

Plant: 465710640760

Material-assembly-group-no: 4657.106.407



6 WG 211 /
SHIFT SYSTEM



Plant

Page 1 from 2

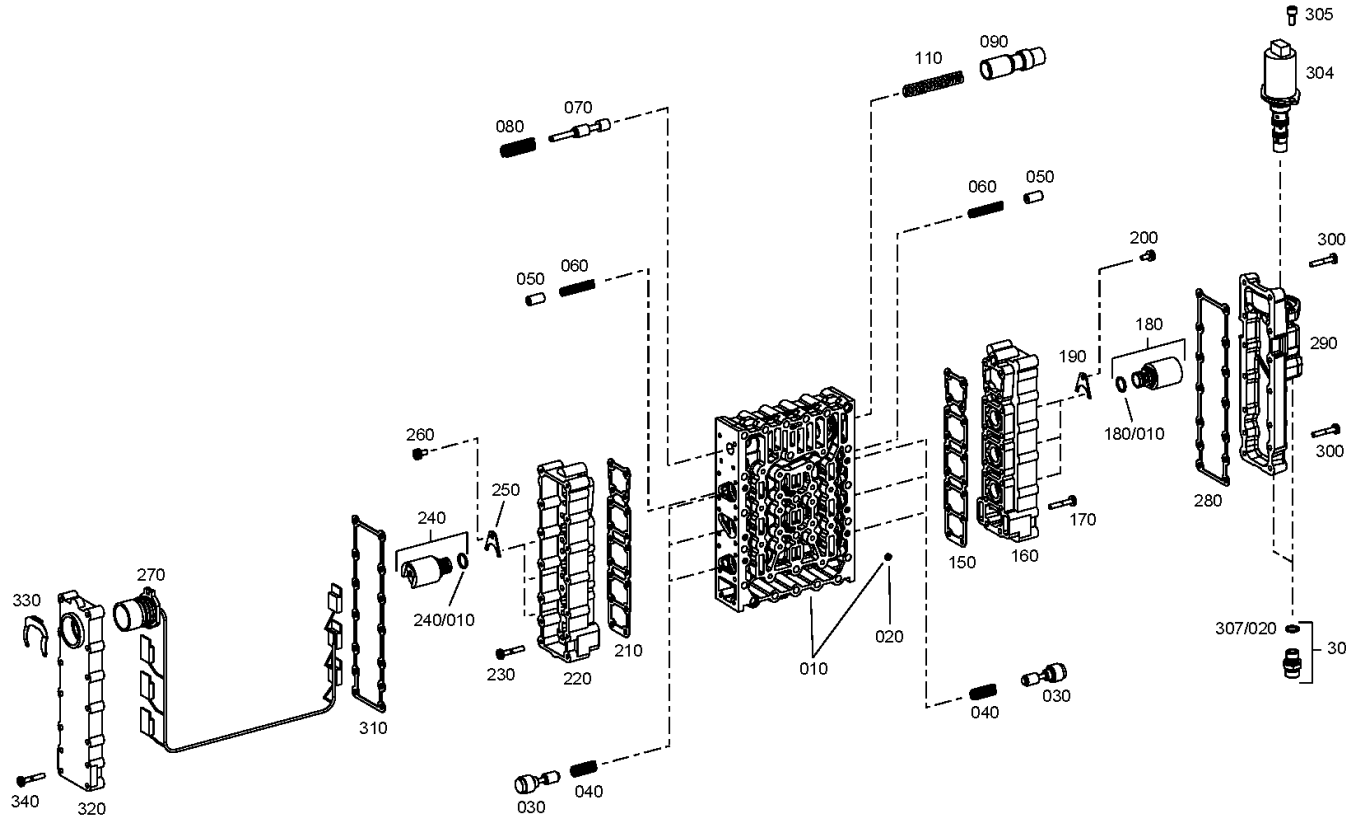
Material number: 4657.066.004

Plant: 465615901861

Material-assembly-group-no: 4656.159.018



6 WG 211 /
SHIFT SYSTEM



Plant

Page 2 from 2

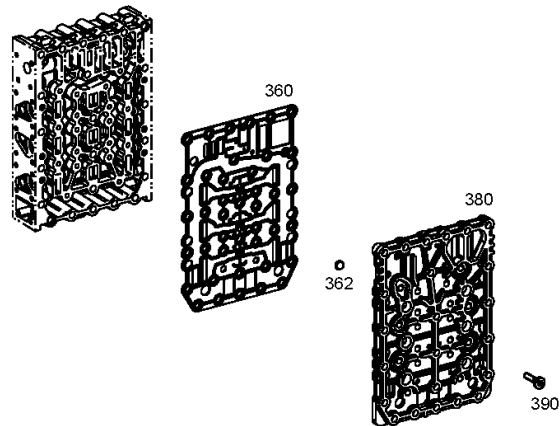
Material number: 4657.066.004

Plant: 465615901862

Material-assembly-group-no: 4656.159.018



6 WG 211 /
SHIFT SYSTEM



Plant

Page 1 from 1

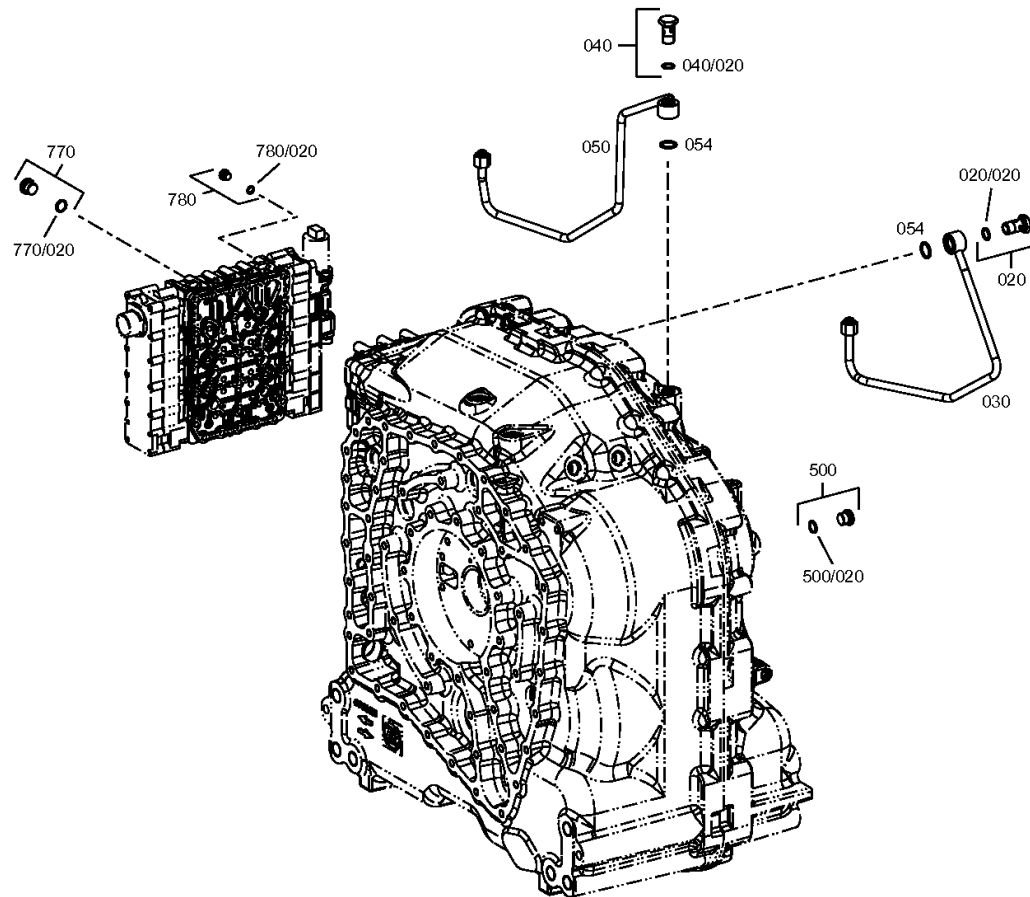
Material number: 4657.066.004

Plant: 465712301700

Material-assembly-group-no: 4657.123.017



6 WG 211 /
CONTROL UNIT



Plant

Page 1 from 1

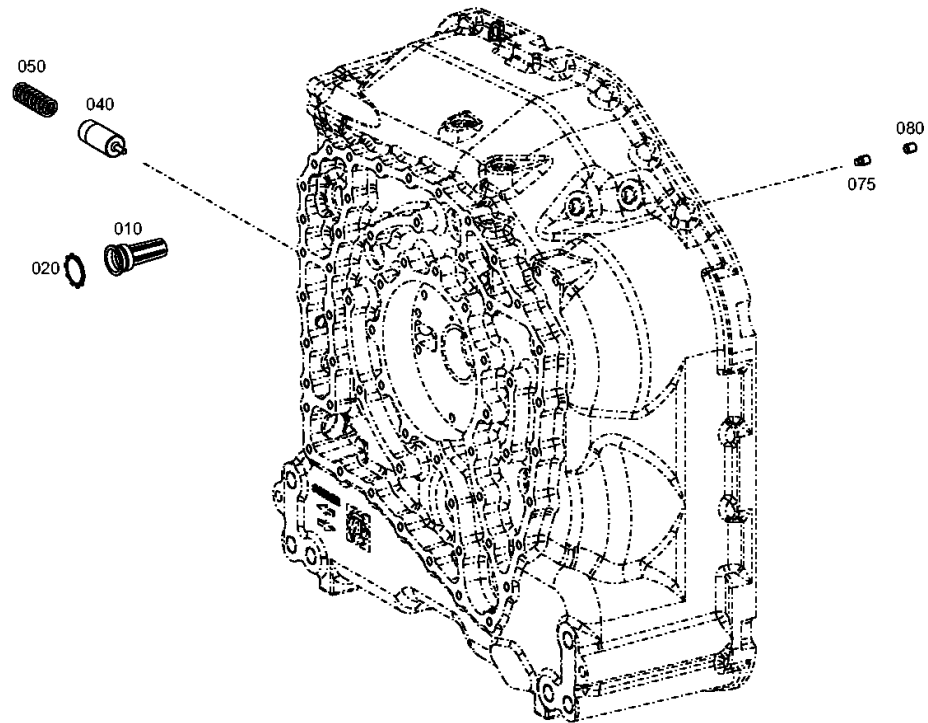
Material number: 4657.066.004

Plant: 465712000500

Material-assembly-group-no: 4657.120.005



6 WG 211 /
PRESSURE REGULATOR



Plant

Page 1 from 1

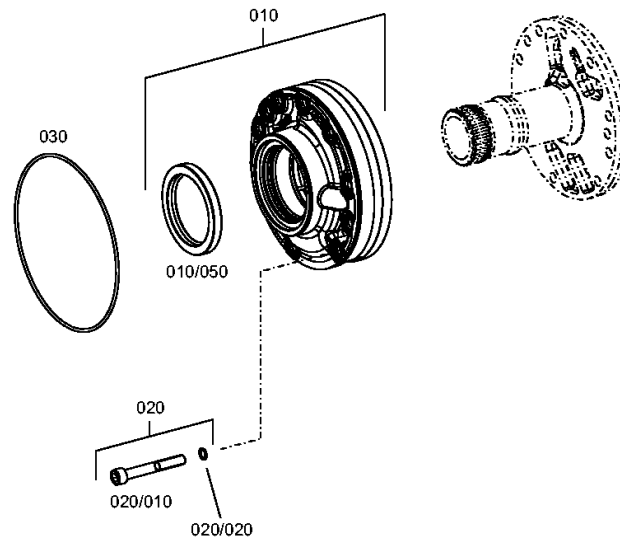
Material number: 4657.066.004

Plant: 465712200500

Material-assembly-group-no: 4657.122.005



6 WG 211 /
PRESSURE OIL PUMP



Plant

Page 1 from 1

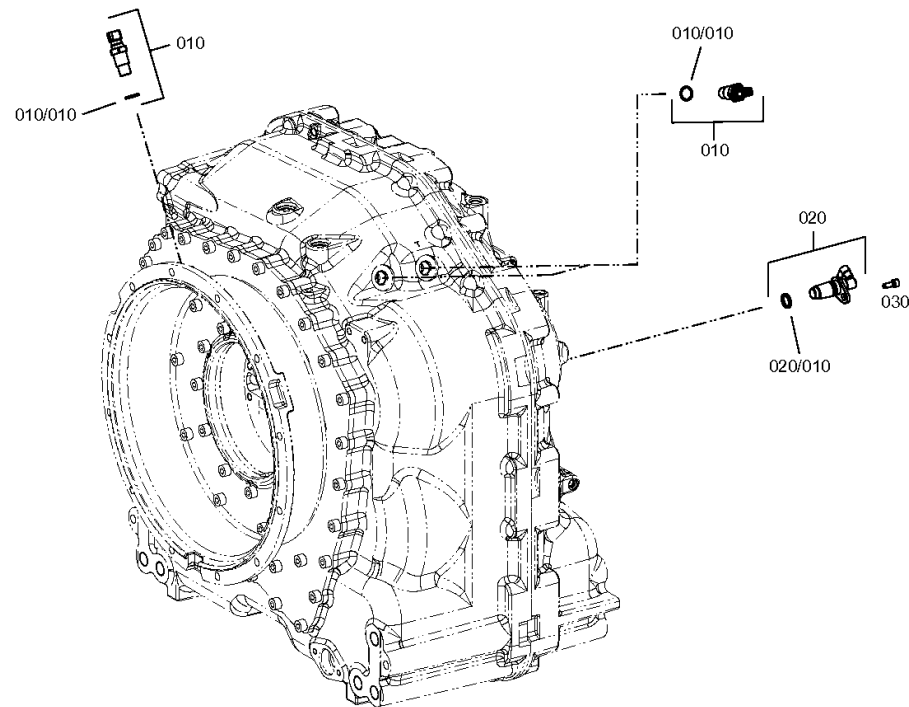
Material number: 4657.066.004

Plant: 465712501280

Material-assembly-group-no: 4657.125.012



6 WG 211 /
INDUCTIVE SENSOR



Plant

Page 1 from 1

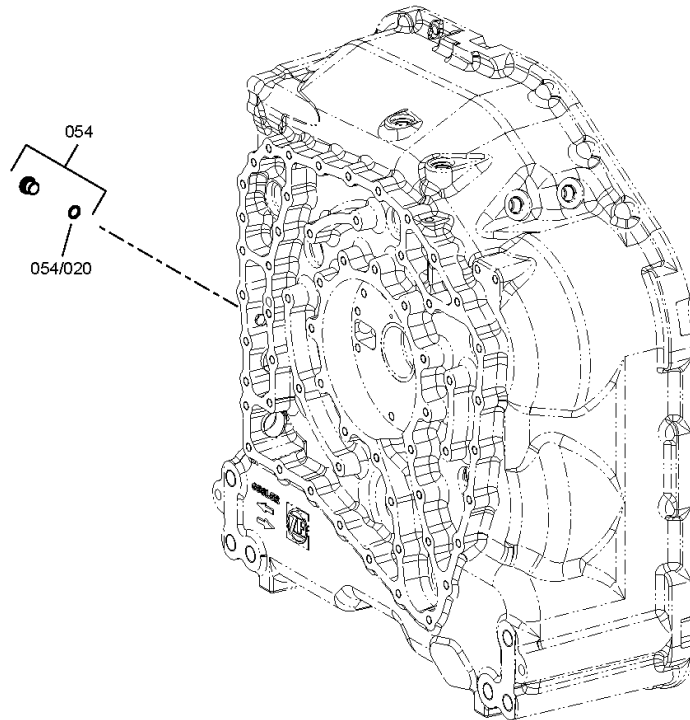
Material number: 4657.066.004

Plant: 465712400150

Material-assembly-group-no: 4657.124.001



6 WG 211 /
TEMPERATURE SENSOR



Plant

Page 1 from 1

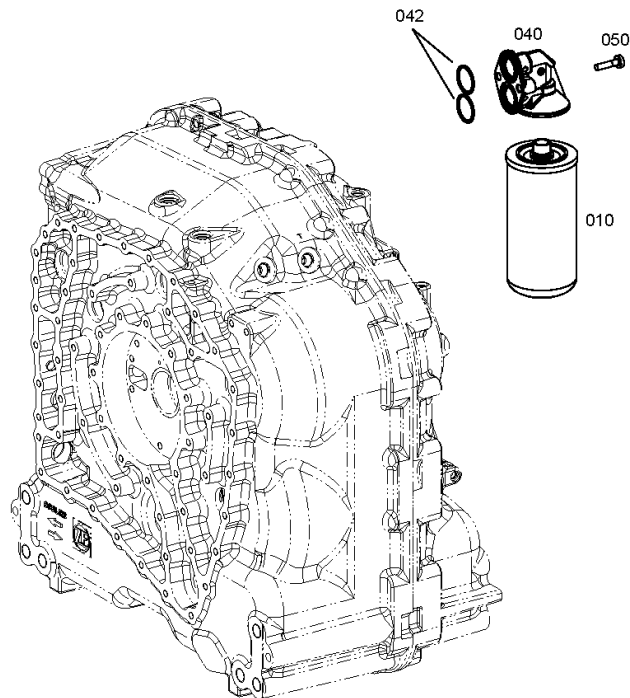
Material number: 4657.066.004

Plant: 465613801750

Material-assembly-group-no: 4656.138.017



6 WG 211 /
FILTER



Plant

Page 1 from 1

Material number: 4657.066.004

Plant: 465713101550

Material-assembly-group-no: 4657.131.015



6 WG 211 /
FILLER NOZZLE

